

(19)



Europäisches Patentamt

European Patent Office

Office européen des brevets



(11)

EP 1 215 995 B1

(12)

EUROPEAN PATENT SPECIFICATION

(45) Date of publication and mention
of the grant of the patent:

21.12.2005 Bulletin 2005/51

(21) Application number: **00968534.8**

(22) Date of filing: **28.09.2000**

(51) Int Cl.⁷: **A61B 5/00**, G06F 1/00

(86) International application number:
PCT/US2000/027017

(87) International publication number:
WO 2001/022873 (05.04.2001 Gazette 2001/14)

(54) **SENSOR WITH DIGITAL SIGNATURE OF DATA RELATING TO SENSOR**

SENSOR MIT DIGITALER SIGNATUR VON SENSORBEZOGENEN DATEN

DETECTEUR A SIGNATURE NUMERIQUE DE DONNEES RELATIVES AU DETECTEUR

(84) Designated Contracting States:

**AT BE CH CY DE DK ES FI FR GB GR IE IT LI LU
MC NL PT SE**

(30) Priority: **28.09.1999 US 156488 P**
14.09.2000 US 662246 P

(43) Date of publication of application:
26.06.2002 Bulletin 2002/26

(73) Proprietor: **MALLINCKRODT INC.**
Hazelwood, MO 63042 (US)

(72) Inventors:

- **BERSON, Thomas, A.**
Palo Alto, CA 94301 (US)
- **OLSON, Bryan**
Sunnyvale, CA 94087 (US)
- **FEIN, Michael, E.**
deceased (US)

- **MANNHEIMER, Paul, D.**
Danville, CA 94506 (US)
- **PORGES, Charles, E.**
Orinda, CA 94563 (US)
- **SCHLOEMER, David**
Stilwell, KS 66085 (US)

(74) Representative: **Grubert, Andreas et al**
Baker Botts
99 Gresham Street
London EC2V 7BA (GB)

(56) References cited:

EP-A- 0 949 506 **US-A- 4 700 708**
US-A- 4 942 877

- **MENEZES, VAN OORSCHOT, VANSTONE:**
"HANDBOOK OF APPLIED CRYPTOGRAPHY"
BOCA RATON, FL, CRC PRESS,US, 1997,
XP002161210 ISBN: 0-8493-8523-7

Note: Within nine months from the publication of the mention of the grant of the European patent, any person may give notice to the European Patent Office of opposition to the European patent granted. Notice of opposition shall be filed in a written reasoned statement. It shall not be deemed to have been filed until the opposition fee has been paid. (Art. 99(1) European Patent Convention).

EP 1 215 995 B1

Description

BACKGROUND OF THE INVENTION

[0001] The present invention relates to sensors having a memory. It will be described in particular with respect to pulse oximeter sensors, but is equally applicable to other types of sensors as well.

Pulse Oximetry

[0002] Pulse oximetry is typically used to measure various blood flow characteristics including, but not limited to, the blood-oxygen saturation of hemoglobin in arterial blood, and the rate of blood pulsations corresponding to a heart rate of a patient. Measurement of these characteristics has been accomplished by use of a non-invasive sensor which passes light through a portion of the patient's tissue where blood perfuses the tissue, and photoelectrically senses the absorption of light in such tissue. A monitor, connected to the sensor, determines the amount of light absorbed and calculates the amount of blood constituent being measured, for example, arterial oxygen saturation.

[0003] The light passed through the tissue is selected to be of one or more wavelengths that are absorbed by the blood in an amount representative of the amount of the blood constituent present in the blood. The amount of transmitted or reflected light passed through the tissue will vary in accordance with the changing amount of blood constituent in the tissue and the related light absorption. For measuring blood oxygen level, such sensors have been provided with light sources and photodetectors that are adapted to operate at two different wavelengths, in accordance with known techniques for measuring blood oxygen saturation.

[0004] Various methods have been proposed in the past for coding information in sensors, including pulse oximeter sensors, to convey useful information to a monitor. For example, an encoding mechanism is shown in Nellcor U.S. Patent No. 4,700,708. This mechanism relates to an optical oximeter probe which uses a pair of light emitting diodes (LEDs) to direct light through blood-perfused tissue, with a detector detecting light which has not been absorbed by the tissue. Oxygen saturation calculation accuracy depends upon knowing the wavelengths of the LEDs. Since the wavelengths of LEDs can vary, a coding resistor is placed in the probe with the value of the resistor indicating to the monitor the oximeter oxygen saturation calculation coefficients appropriate for the actual wavelengths of at least one of the LEDs or the LED wavelength combination for the sensor. When the oximeter instrument is turned on, it first applies a current to the coding resistor and measures the voltage to determine the value of the resistor and thus appropriate saturation calculation coefficients to use for the wavelengths of the LEDs in the probe.

[0005] Other coding mechanisms have also been pro-

posed in U.S. Patent Nos. 5,259,381; 4,942,877; 4,446,715; 3,790,910; 4,303,984; 4,621,643; 5,246,003; 3,720,177; 4,684,245; 5,645,059; 5,058,588; 4,858,615; and 4,942,877. The '877 patent in particular discloses storing a variety of data in a pulse oximetry sensor memory, including coefficients for a saturation equation for oximetry.

[0006] A problem with prior art sensor coding techniques is that information encoding may sometimes be inaccurate and/or not authentic. This results in the monitor sometimes not being able to obtain adequate readings from a patient, or worse yet making inaccurate calculations, such that in extreme instances the inaccurate codes and resulting inadequate readings might significantly impair patient safety and contribute to bad patient outcomes. Inaccurate codes can result under a variety of circumstances. For example, errors can occur during a manufacturing process or during shipment of the sensor. More common, however, is that inaccurate codes are somewhat purposely used by discount low quality third party sensor manufacturers who are not licensed or authorized by the corresponding monitor manufacturer to supply compatible high quality sensors. These third parties often invest minimal amounts in research and simply do not understand what the codes are for since they do not understand how the monitor works or how the monitor uses the codes. Since they are not licensed by the monitor manufacturer, this information is generally not available from the monitor manufacturer. All too often, these third parties choose not to invest time and expense to learn by reverse engineering techniques or original science how the monitors work and how the codes are used to ensure patient safety. Rather, numerous instances exist where such third parties simply examine a range of code values used in the market for each data characteristic being encoded, and take an average code value for all their sensors so as to be "compatible" with a particular monitor. Though in many instances using an average code value will simply result in readings being out of specification but not otherwise particularly dangerous, the average code value may be sufficiently wrong to introduce significant errors into the computation algorithms used by the monitor and to cause significant patient safety problems. In addition, whenever third party inaccurate codes contribute to a bad patient outcome, the harmed patient, or his or her heirs, can attempt to hold the monitor manufacturer, together with the direct caregivers, responsible. If the caregivers have not retained the low quality third party sensor used and made no record of its use, which happens, it would be difficult for the monitor manufacturer to establish that the problem was caused by use of the low quality third party sensor with its otherwise high quality monitor.

[0007] Another reason that there is a need for authentication of digital data stored in association with medical sensors is the small but real possibility that data will be corrupted between the time of recording in the factory

and the time of reading by the instrument which is monitoring the condition of a patient. One often-cited example of a mechanism which may cause such corruption is the changing of a value recorded in digital memory by the incidence of an energetic cosmic ray. A more ordinary source of corruption is damage to a memory cell caused by electrostatic discharge.

[0008] Accordingly, a need exists in the art to devise a way to communicate accurate and authentic complex codes from a sensor to a monitor to ensure accurate computations and accurate patient monitoring by the monitor.

SUMMARY OF THE INVENTION

[0009] Accordingly, it is an object of the invention to provide a sensor which has codes useful for a monitor which can be authenticated as accurate. The invention is defined in the appended claims.

[0010] This and other objects are achieved by a sensor which produces a signal corresponding to a measured physiological characteristic of a patient and which provides codes which can be assured of being accurate and authentic when used by a monitor. A memory associated with the sensor stores the codes and other data relating to the sensor, the memory also containing a digital signature. The digital signature authenticates the quality of the codes and data by ensuring it was generated by an entity having predetermined quality controls, and ensures the codes are accurate.

[0011] In one embodiment, the digital signature is produced during the sensor manufacturing process using a private key of a private key and public key pair, with the signature then being verifiable with the public key embedded in processors in an external sensor reader (e.g., monitor). The signature can be separate from the data. Or, instead of the signature being appended to the data, the signature itself can contain all or at least some of the data and thus provides a level of masking of the data.

[0012] According to one embodiment of the invention, any one of several known public/private key signature methods can be used. These include Diffie-Hellman (and its variants, such as the Digital Signature Standard from the National Institute of Standards and Technology, El Gamal and the elliptic curve approaches), RSA (developed at the Massachusetts Institute of Technology), and Rabin-Williams.

[0013] In a further embodiment of the invention, a digest of a portion of the data to be signed is included in the signature to verify that errors in the data have not occurred. Each piece of data preferably is organized to include a field ID, indicating the type of data to follow, followed by a data length element, followed by the piece of data. A mandatory bit is also preferably provided indicating whether knowledge of how to use the piece of data by the monitor is mandatory for operation of the sensor with the monitor. Thus, an older monitor which

does not recognize a non-critical piece of data can simply disregard it, since presumably it will not implement the enhanced feature which corresponds to the piece of data. However, if the piece of data is necessary for proper operation of a sensor, the mandatory bit will be set, and the sensor reader/monitor will indicate that it cannot use the particular sensor that has been plugged in.

[0014] In yet another embodiment, the signed data stored with the sensor would include at least a sensor dependent saturation calibration curve coefficient used to calculate oxygen saturation by a monitor. Additionally, the data may include sensor OFF thresholds and thermistor calibration coefficients appropriate for sensors including a thermistor. Some of such data may be included within the signature, and this or other data could be included outside the signature. The data outside the signature could be encrypted (or masked), if desired, with a symmetric key cryptographic algorithm, for example the Data Encryption Standard (DES) from NIST, and the symmetric key could be included in the signature. Alternatively, the symmetric key could be derivable from the digest, which is contained within the signature.

[0015] For a further understanding of the nature and advantages of the invention, reference should be made to the following description taken in conjunction with the accompanying drawings.

BRIEF DESCRIPTION OF THE DRAWINGS

[0016]

Fig. 1 is a block diagram of a sensor and sensor reader system incorporating the invention.

Fig. 2 is a block diagram of the contents of a sensor memory shown in Fig. 1.

Fig. 3 is a block diagram illustrating a system for signing data during the manufacture of a sensor.

Fig. 4 is a diagram illustrating the signing mechanism by the system of Fig. 3.

Fig. 5 is a data flow diagram illustrating the data generated in the method of Fig. 4.

Fig. 6 is a diagram of one embodiment of a sensor reader or monitor, illustrating different software modules.

Fig. 7 is a flowchart illustrating the reading of a sensor according to the invention.

Fig. 8 is a diagram illustrating the flow of data read in the method of Fig. 7.

Fig. 9 is a diagram of different fields in the data.

Fig. 10 is a block diagram of a sensor system using an adapter with a digital signature in the adapter.

DESCRIPTION OF THE SPECIFIC EMBODIMENTS

Definitions

[0017] SIGNED DATA is data which has been included in the computation of a digest (by use of a hash func-

tion), this digest being in turn included in the computation of a digital signature, so that any later alteration of the data will be detectable by a failure of verification of the digital signature. Data which have been signed may eventually reside either inside or outside the digital signature. In the process known as "digital signature with message recovery," the data reside entirely within the digital signature. Until the signature is verified, the data are in a scrambled form, so that the casual observer cannot understand them. The mathematical process that verifies the signature unscrambles, or "recovers" the data. In the process known as "digital signature with partial recovery," which is preferred for the invention described herein, a portion of the signed data is included within the signature, and additional data reside outside the signature. The data portion within the signature is obscured until the signature is verified, but the portion outside remains easily readable, unless a masking process is used to obscure it.

[0018] MASKED DATA, as the term is used herein, are data which have been encrypted so as to be recoverable with an unmasking key which is included within the signature. During verification of the signature, the unmasking key is recovered. That unmasking key may then be used to decrypt the masked data. In a preferred embodiment, the masked data are encrypted under a symmetric key, which is to say that the encryption and decryption keys (i.e. the masking and unmasking keys) are identical. In an especially preferred embodiment, the message digest that is incorporated in the digital signature is used as a symmetric key for masking and unmasking data outside the signature.

Sensor Reader/Monitor

[0019] Fig. 1 is a block diagram of one preferred embodiment of the invention. Fig. 1 shows a pulse oximeter 17 (or sensor reader) which is connected to a non-invasive sensor 15 attached to patient tissue 18. Light from sensor LEDs 14 passes into the patient tissue 18, and after being transmitted through or reflected from tissue 18, the light is received by photosensor 16. Two or more LEDs can be used depending upon the embodiment of the present invention. Photosensor 16 converts the received energy into an electrical signal, which is then fed to input amplifier 20.

[0020] Light sources other than LEDs can be used. For example, lasers could be used, or a white light source could be used with appropriate wavelength filters either at the transmitting or receiving ends.

[0021] Time Processing Unit (TPU) 48 sends control signals to the LED drive 32, to activate the LEDs, typically in alternation. Again, depending on the embodiment, the drive may control two or any additional desired number of LEDs.

[0022] The signal received from input amplifier 20 is passed through three different channels as shown in the embodiment of Fig. 3 for three different wavelengths.

Alternately, two channels for two wavelengths could be used, or N channels for N wavelengths. Each channel includes an analog switch 40, a low pass filter 42, and an analog to digital (A/D) converter 38. Control lines from TPU 48 select the appropriate channel at the time the corresponding LED 14 is being driven, in synchronization. A queued serial module (QSM) 46 receives the digital data from each of the channels via data lines from the A/D converters. CPU 50 transfers the data from QSM 46 into RAM 52 as QSM 46 periodically fills up. In one embodiment, QSM 46, TPU 48, CPU 50 and RAM 52 are part of one integrated circuit, such as a microcontroller.

Sensor Memory

[0023] Sensor 15, which includes photodetector 16 and LEDs 14, has a sensor memory 12 associated with it. Memory 12 is connected to CPU 50 in the sensor reader or monitor 17. The memory 12 could be packaged in a body of the sensor 15 or in an electrical plug connected to the sensor. Alternatively, the memory 12 could be packaged in a housing which is attachable to an external surface of the monitor, or the memory 12 could be located anywhere in a signal path between the sensor body and the monitor. Specifically, according to some preferred embodiments, a content of the sensor memory 12 could be constant for all sensors associated with a particular sensor model. In this case, instead of putting an individual memory 12 on each sensor associated with this model, the memory 12 could instead be included in a reusable extension cable associated with the sensor model. If the sensor model is a disposable sensor, in this case a single memory 12 could be incorporated into a reusable extension cable. The reusable cable could then be used with multiple disposable sensors.

[0024] Fig. 2 is a diagram of the contents of memory 12 of Fig. 1 according to one preferred embodiment. A digital signature 60 occupies a first portion of the memory, with the signature preferably including sensor related data. A second portion 62 contains data which are signed and masked. A third portion 64 includes data which are signed but remain clear (i.e., they are not masked). Finally, a portion 66 is reserved for writing to the sensor memory by the sensor reader. Portion 66 is neither signed nor masked. While this preferred embodiment is shown for illustrative purposes, it should be understood that memory 12 may contain many different blocks of data outside the digital signature, each of which may be signed and/or masked according to the requirements of a particular embodiment. These different blocks of data may be arranged in any desired order, e.g., multiple signed and unsigned blocks may be interleaved, and multiple masked and unmasked blocks may be interleaved. It should also be understood that data written to memory 12 by the sensor reader is an optional feature, and that such data may optionally be masked.

Writing of Signature at Factory

[0025] Fig. 3 is a block diagram of one embodiment of a system used in a factory to write a signature into the sensor memory 12. Shown in Fig. 3 is a personal computer 70 and an associated cryptographic coprocessor 72 which contains and utilizes a private key of a private/public key pair. The private key is contained within a memory within coprocessor 72. This key is preferably not readable by anyone to preserve security. The corresponding public key may be known by both the PC 70 and coprocessor 72, or may be outputted by the coprocessor 72.

[0026] The data which are signed by the coprocessor 72 can come from more than one source. Shown is a tester 76 for testing the sensor to determine the value of certain sensor components 78, such as LED wavelength, thermistor resistance, etc. These data values are then provided to PC 70 along line 80. Additional information 82 may be input by a keyboard or from another database along lines 84. This data may include, for example, a serial number for the sensor, a manufacturing date, a lot number, a digest of the portion of the data to be signed, or other information.

[0027] The data to be signed and other data to be included in the memory 12 are passed from the PC to cryptographic coprocessor 72. The coprocessor 72 computes a digest from the data being signed, and signs, with the private key, the digest and other data whose signing is desired. The signature and data contained therein can include a symmetric key for other data being masked, or information from which a symmetric key can be derived. The coprocessor transmits the signature back to PC 70. PC 70 preferably masks some of the data which are not included in the signature, and combines the masked data, signature, and clear data and transmits all this to memory 12 on lines 86.

[0028] Fig. 4 is a diagram illustrating the operation of the system of Fig. 3. Fig. 5 illustrates the data flow according to the method of Fig. 4.

[0029] First, the sensor is tested and measured parameters 88 of the sensor, such as LED wavelength, are provided. Next, any other data 89 is input. The data is then sorted (step 90). This sort results in first data 91 to be signed, second data 92 to be masked, and third data 93, which will be in the clear, i.e., neither masked nor signed. To verify no errors occur in any of the data 91, 92, 93 during manufacture or during a subsequent reading/decryption step when the sensor is used, a digest 95 is created (step 94) from all the data 91, 92, 93 during manufacture and is included within the signature. The digest is produced as an output of a hash function applied to the data 91, 92, 93. The digest can be compared to a complicated CRC. When the data and the digest are later read by a monitor subsequent to decryption, if one or more bits of error occurred in any of the data 91, 92, 93, a second digest the monitor will create from the read data will not correspond to the digest extracted

from the memory, thus indicating one or more errors have been introduced somewhere in the writing or signature verification processes. An example of a suitable hash function is SHA-1, described in Federal Information Processing Standard Publication FIPS, PUB 180-1, *Secure Hash Standard*, National Institute of Standards & Technology, 1995. The digest 95 and data 91 are signed along with formatting data 99 added in step 100 to produce a signature 101 in step 96. The formatting data is added in step 100, for example in accordance with International Standard ISO/IEC 9796-2, a standard for digital signatures. The data 92 is masked in step 103. This signature 101, masked data 103, and clear data 93 are then combined by the coprocessor 72 and PC 70 and stored in sensor memory 12.

[0030] The private key used to sign the data 91 is preferably a Rabin-Williams digital signature algorithm, one example of which is described in ISO 9796-2.

[0031] In one embodiment, the original block of data to be signed, block 91, is 73 bytes or less plus a 20 byte digest plus 3 bytes of formatting data 99. This yields a signed message of 96 bytes. Longer signatures can be used as well, e.g., signatures having 128 bytes with 106 bytes being receivable as useful data 91. The length of the signature depends on the degree of security desired and the amount of decryption ability of the monitor.

Reading Signature by Reader/Monitor in Field

[0032] Fig. 6 illustrates a portion of a sensor reader or monitor 17 for verifying the digital signature and recovering the data from a sensor when used on a patient. The data are first retrieved from the sensor memory and stored in a memory 110 by CPU 50. The sensor reader has a public key in a memory 112, which is typically loaded at the time of manufacture of the monitor or is provided as an upgrade of the monitor. A signature verification and data recovery program is stored in a portion of memory 114.

[0033] Fig. 7 illustrates the operation of the signature verification and data recovery program of memory portion 114 of Fig. 6. Fig. 8 is a diagram illustrating the movement of the data according to the flowchart of Fig. 7. Data is first retrieved from the sensor memory in step 106. The data 102 retrieved is shown in Fig. 8 as consisting of signature 101, the masked data 107 and the clear data 93. The public key 112 is then retrieved from the monitor's memory (step 108).

[0034] The signature and public key are then provided as inputs to a cryptographic transform to obtain the signature data 91 and the memory digest 95 (step 109).

[0035] The memory digest is used to determine the masked data symmetric key, and this key is then used to decrypt the masked data 107 to obtain the original data 92 that was masked (step 116).

[0036] In order to verify the accuracy of all the data 91, 92, 93, a second digest is then created by the monitor from the decrypted signed data 91, the unmasked

data 92, and the clear data 93 using a hash function 118 (step 120). This will create a new digest 122 which then can be compared with the original digest 95 (read from the memory) in a step 124. If the digests are the same, the signature is verified and the message (combined data 91, 92, 93) is authenticated (step 126). The monitor then uses the message in its operation. If, on the other hand, the digests are not the same, the message is determined to be corrupted and the monitor will indicate a defective sensor signal to the monitor user and not use the message (128).

[0037] As can be seen, the invention uniquely applies digital signatures to sensors and in particular pulse oximeter sensors. The unique application to a sensor allows the sensor reader/monitor to verify message (data) accuracy, authenticity as to source and quality of the sensor, and protects sensitive sensor specification information from being easily discovered and used erroneously by non-innovative sensor manufacturers.

Signature Fields

[0038] Fig. 9 illustrates in more detail one embodiment of the signature data 91, digest 95, and formatting data 99. In particular, signature data 91 is broken up into an arbitrary number of fields 132, followed by a CRC 134. Each field 132 includes a 1 byte field ID 136, which identifies the type of data presented in its field. A single bit 138 indicates whether that field is mandatory or not. Next, there are 7 bits in a block 140 identifying the length of the field. Finally, the field data is provided in a byte block 142.

[0039] In operation, if an existing monitor or sensor reader is not able to handle or does not recognize the particular field ID 136, it can look to the field length 140 and figure out how much data to skip to get to the next field. However, it first checks mandatory bit 138 to determine whether this data is mandatory to operation of the sensor. If it is mandatory, the monitor or sensor reader will produce an error message indicating that it is unable to properly read the attached sensor. If it is not mandatory, the monitor or sensor reader will simply ignore this data field.

[0040] This field format thus provides flexibility in packing data into the signature data block, and also upgradeability and compatibility with existing sensor readers and future generations of sensors and monitors.

[0041] In one embodiment, a field identifier of a selected value is designated as an "escape character", indicating that the next character is the identifier of an extended set. This allows the ability to add, delete, move, compress or stretch the fields that are included in a message without having to resort to fixed addresses.

Data Types

[0042] The following are examples of data types that might be included in the memory 12 in one embodiment.

[0043] The actual coefficients or data to be applied to the equations for the saturation calculation for a pulse oximeter could be stored. These coefficients can be stored in lieu of storing a value corresponding to the measured LED wavelength. The result is greatly increased flexibility in sensor design, since calibration curves are not restricted to a small set of curves which have been provided in instruments.

[0044] Alternately to the coefficients or in addition thereto, the LED wavelengths could simply be stored. Also, secondary emission wavelength characteristics could be stored, and other LED parameters.

[0045] Certain sensors may have thermistors used to measure local temperature for purposes such as compensation of calibration curves for sensor temperature, or to prevent patient burns. Calibration coefficients for the thermistor could be stored.

[0046] Other data that might be included in memory 12 could include, for example, a lot code which will allow traceability of the sensor, a bad sensor flag, a date of manufacture, manufacturing test information, the version of the signing software program used for the signature, LED forward V/I characteristics, LED optical power characteristics, a detector efficiency characteristic, a maximum safe LED power, a sensor data set revision level (indicating the features included in the sensor), a sensor model ID, an adult/neonatal query flag (for triggering a desired alarm limit range depending upon whether a neonate or adult is monitored, with different normal oxygen saturation levels for pulse oximetry), a write once/write many flag, a page size, a number of pages, and a maximum number of recycle events.

[0047] Alternately, any of the data types mentioned above or described in the cited prior art references could be used and stored in either masked data 92, in the signature data 91, or in the clear data 93.

[0048] Fig 10 is a block diagram of a sensor system incorporating an adapter having a digital signature in the adapter. Fig. 10 shows a sensor 202 connected to an adapter 204, which in turn is connected to a monitor 206. The adapter includes signal conditioning circuitry 208, a memory with a digital signature 210, and an internal monitor 212. One use of such an adapter would be for a class of sensors designed to be connected to such an adapter without a digital signature. The adapter itself could provide the digital signature to the external monitor 206. Thus, for example, instead of each sensor being certified, a different method for determining that the sensors are certified can be used, with the adapter providing the certification to the external monitor.

[0049] In the embodiment shown in Fig. 10, the adapter also includes an internal monitor 212. This internal monitor can be used to provide output display or other signals which are different from, or variations of, the outputs and displays provided by external monitors 206 in the field. To ensure that any outputs or displays by the two monitors are consistent, signal conditioning block 208 can modify the sensor signal so that, in its modified

form, the signal output on line 214 to external monitor 206 will cause external monitor 206 to create an output signal corresponding to that produced by internal monitor 212. For example, a patient signal can be obtained from sensor 202 corresponding to a pulse oximetry value. An estimation of saturation and heart rate can be generated on internal monitor 212, with block 208 generating a synthetic AC signal which it sends to external monitor 206. The construction of a synthetic signal would be such so as to ensure that the external monitor calculates a similar heart rate and saturation to internal monitor 212.

[0050] The digital signature can be a signature of any data including unfiltered patient data, filtered patient data, a synthetic patient physiological signal or any other data.

[0051] As will be understood by those of skill in the art, the present invention may be embodied in other specific forms without departing from the essential characteristics of the invention. Accordingly, the foregoing is intended to be illustrative, but not limiting, of the scope of the invention which is set forth in the following claims.

Claims

1. A pulse oximeter adapter apparatus (204) for use with a sensor (15) having an output for providing a sensor signal corresponding to oxygen saturation, in which the adaptor includes a memory (210), and is **characterised by** the memory containing sensor data and a digital signature.
2. The apparatus of Claim 1 wherein a field of the data includes a mandatory/optional bit flag, the flag indicating whether knowledge of how to use the field of data by a monitor reading the memory is mandatory for operations of the monitor with the sensor.
3. The apparatus of Claim 1 wherein a first portion of the sensor data is encrypted and thus obscured until the signature is verified, and a second portion of the data is not obscured and is easily readable, with both the first and second portions being signed by the digital signature.
4. The apparatus of Claim 1 wherein the sensor data includes at least one of:
 - saturation calculation coefficients;
 - a date of manufacture;
 - a lot code;
 - a mandatory/optional bit flag, the flag indicating whether knowledge of how to use the field of data by a monitor reading the memory is mandatory for operations of the monitor with the sensor; and
 - a maximum number of recycle events.

5. The apparatus of Claim 4 wherein the sensor data is organized in fields, in which each field is **characterized by** a field ID, a mandatory bit, a field length and field data.
6. The apparatus of Claim 4 wherein the sensor data includes the version of the signing software program used for the signature.
7. The apparatus of Claim 1 wherein the signature is signed using a private key, the signature being verifiable with a public key in the monitor.
8. The apparatus of Claim 1 which includes an internal monitor in the adapter for providing an output signal corresponding to the oxygen saturation, and a conditioning circuit for modifying the sensor signal to produce a synthetic sensor signal, such that a second, external monitor using the synthetic sensor signal will produce an output corresponding to the output signal of the internal monitor.
9. A method for operating a pulse oximeter sensor (15), which comprises attaching an adapter (204) to the sensor, in which the adapter includes a memory (210), and in which the memory contains sensor data and a digital signature.
10. The method of Claim 9 which includes the steps of:
 - storing at least one field of data in the memory;
 - storing a mandatory/optional flag within the field of data;
 - reading the flag with a sensor reader;
 - if the sensor reader does not recognize the field of data and the flag indicates the field is optional, ignoring the field of data; and
 - if the sensor reader does not recognize the field of data and the flag indicates the field is mandatory, producing an error signal indicating inability to use the sensor.
11. The method of Claim 10 which includes the steps of:
 - storing a field length associated with the field;
 - reading the field length; and
 - skipping the field by using the field length if the sensor reader does not recognize the field and the flag indicates the field optional.

Patentansprüche

1. Eine Pulsoximeter-Adapter-Vorrichtung (204) für die Verwendung mit einem Sensor (15), der einen Ausgang besitzt, welcher ein Sensor-Signal zur Verfügung stellt, das einer Sauerstoffsättigung entspricht, in welcher der Adapter einen Speicher

(210) enthält, und **dadurch gekennzeichnet ist, dass** der Speicher Sensor-Daten und eine digitale Signatur enthält.

2. Die Vorrichtung aus Anspruch 1, wobei ein Feld der Daten ein verpflichtend / optional- Bit Flag enthält, wobei das Flag anzeigt, ob Wissen darüber, wie das Feld aus Daten durch einen Monitor, der den Speicher liest, zu verwenden ist, für Operationen des Monitors mit dem Sensor verpflichtend ist. 5
3. Die Vorrichtung aus Anspruch 1, wobei ein erster Abschnitt der Sensor-Daten verschlüsselt ist und folglich unkenntlich ist, bis die Signatur überprüft ist, und ein zweiter Abschnitt der Daten nicht unkenntlich und leicht lesbar ist, wobei sowohl der erste Abschnitt als auch der zweite Abschnitt durch die digitale Signatur signiert sind. 15
4. Die Vorrichtung aus Anspruch 1, wobei die Sensor-Daten mindestens eins enthalten aus: 20
 - Sättigungsberechnungs- Koeffizienten;
 - ein Herstelldatum;
 - ein Chargencode; 25
 - verpflichtend / optional- Bit Flag, wobei das Flag anzeigt, ob Wissen darüber, wie das Feld der Daten durch einen Monitor, der den Speicher liest, zu verwenden ist, für Operationen des Monitors mit dem Sensor verpflichtend ist; und 30
 - eine Höchstzahl von Wiederverwertungs- Ereignissen.
5. Die Vorrichtung aus Anspruch 4, wobei die Sensor-Daten in Feldern organisiert sind, in denen jedes Feld durch ein Feld- ID, ein verpflichtend- Bit, eine Feldlänge und Felddaten **gekennzeichnet** ist. 35
6. Die Vorrichtung aus Anspruch 4, wobei die Sensor-Daten die Version des signierenden Software-Programms enthält, das für die Signatur verwendet wird. 40
7. Die Vorrichtung aus Anspruch 1, wobei die Signatur mit einem privaten Schlüssel signiert wird, wobei die Signatur mit einem öffentlichen Schlüssel in dem Monitor verifizierbar ist. 45
8. Die Vorrichtung aus Anspruch 1, welche einen internen Monitor in dem Adapter für das Bereitstellen eines Ausgangssignals, das der Sauerstoffsättigung entspricht, und einen Aufbereitungsstromkreis für das Ändern des Sensor-Signals enthält, um ein synthetisches Sensor-Signal der Gestalt zu erzeugen, dass ein zweiter, externer Monitor, der das synthetische Sensor-Signal verwendet, eine Ausgabe erzeugt, die dem Ausgangssignal des in- 50

ternen Monitors entspricht.

9. Ein Verfahren für das Betreiben eines Pulsoximeter-Sensors (15), welches aufweist Verbinden eines Adapters (204) mit dem Sensor, in welchem der Adapter einen Speicher (210) enthält, und in welchem der Speicher Sensor-Daten und eine digitale Signatur enthält.
10. Das Verfahren aus Anspruch 9, welches die Schritte enthält von:
 - Speichern mindestens eines Felds von Daten in dem Speicher;
 - Speichern eines verpflichtend / optional- Flags innerhalb des Felds von Daten;
 - Lesen des Flags mit einem Sensor Leser; wenn der Sensor Leser nicht das Feld aus Daten erkennt und das Flag anzeigt, dass das Feld optional ist, Ignorieren des Felds aus Daten; und
 - wenn der Sensor Leser nicht das Feld aus Daten erkennt und das Flag anzeigt, dass das Feld verpflichtend ist, erzeugen eines Fehlersignals, welches Unfähigkeit den Sensor zu verwenden anzeigt.

11. Das Verfahren aus Anspruch 10, welches die Schritte enthält von:

- Speichern einer Feldlänge, die dem Feld zugeordnet ist;
- Lesen der Feldlänge; und
- Überspringen des Felds unter Verwendung der Feldlänge falls der Sensor Leser das Feld nicht erkennt und das Flag anzeigt, dass das Feld optional ist.

Revendications

1. Appareil adaptateur de sphygmo-oxymètre (204) destiné à être utilisé avec un capteur (15) ayant une sortie permettant de fournir un signal de capteur correspondant à la saturation en oxygène, dans lequel l'adaptateur inclut une mémoire (210), et est **caractérisé en ce que** la mémoire contient les données du capteur et une signature numérique.
2. Appareil selon la revendication 1, dans lequel un champ des données inclut un drapeau de bit obligatoire ou facultatif, le drapeau indiquant s'il est obligatoire de savoir comment utiliser le champ de données grâce à un moniteur lisant la mémoire pour le fonctionnement du moniteur avec le capteur.
3. Appareil selon la revendication 1, dans lequel une première partie des données du capteur est cryptée

et ainsi cachée jusqu'à la vérification de la signature, et une seconde partie des données n'est pas cachée et est facilement lisible, les première et seconde parties étant marquées par la signature numérique.

4. Appareil selon la revendication 1, dans lequel les données du capteur incluent au moins l'un des éléments suivants :

les coefficients de calcul de la saturation;

une date de fabrication;

un code de lot ;

un drapeau de bit obligatoire ou facultatif, le drapeau indiquant s'il est obligatoire de savoir comment utiliser le champ de données grâce à un moniteur lisant la mémoire est obligatoire pour le fonctionnement du moniteur avec le capteur ; et

un nombre maximum de réutilisations.

5. Appareil selon la revendication 4, dans lequel les données du capteur sont organisées en champs, dans lequel chaque champ est **caractérisé par** un identifiant de champ, un bit obligatoire, une longueur de champ et des données de champ.

6. Appareil selon la revendication 4, dans lequel les données du capteur incluent la version du logiciel de signature utilisé pour la signature.

7. Appareil selon la revendication 1, dans lequel la signature est réalisée en utilisant une clé privée, la signature pouvant être vérifiée avec une clé publique dans le moniteur.

8. Appareil selon la revendication 1, incluant un moniteur interne dans l'adaptateur pour fournir un signal de sortie correspondant à la saturation en oxygène, et un circuit de conditionnement permettant de modifier le signal du capteur pour produire un signal de capteur synthétique, de telle sorte qu'un second moniteur, externe, utilisant le signal de capteur synthétique va produire une sortie correspondant au signal de sortie du moniteur interne.

9. Procédé de fonctionnement d'un capteur de sphymoximètre (15), comprenant la fixation d'un adaptateur (204) au capteur, dans lequel l'adaptateur inclut une mémoire (210), et dans lequel la mémoire contient des données du capteur et une signature numérique.

10. Procédé selon la revendication 9, incluant les éta-

pes consistant à :

stocker au moins un champ de données dans la mémoire ;

stocker un drapeau obligatoire ou facultatif dans le champ de données ;

lire le drapeau avec un lecteur de capteur ;

si le lecteur de capteur ne reconnaît pas le champ de données et que le drapeau indique que le champ est facultatif, ignorer le champ de données ; et

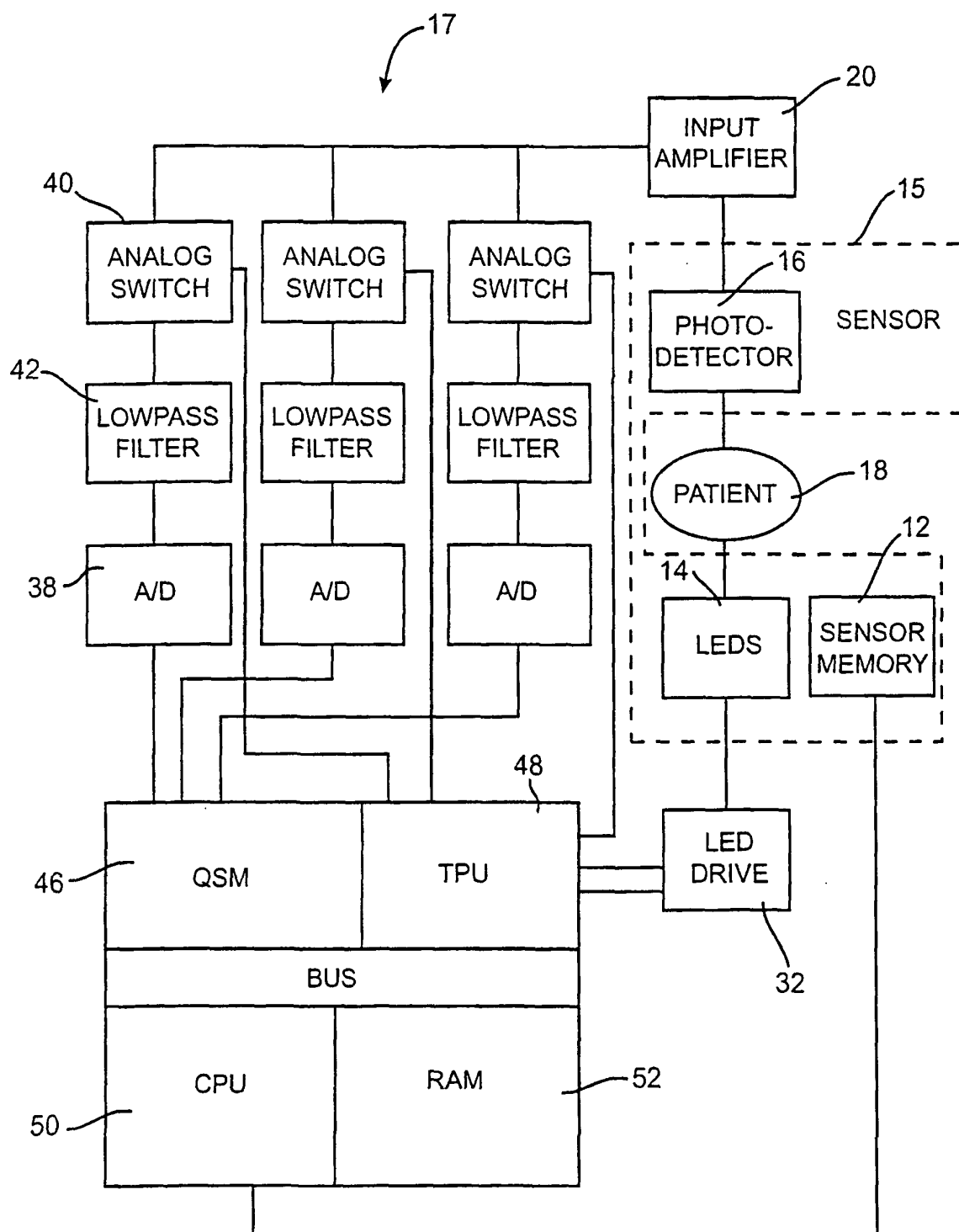
si le lecteur de capteur ne reconnaît pas le champ de données et si le drapeau indique que le champ est obligatoire, produire un signal d'erreur indiquant l'incapacité à utiliser le capteur.

11. Procédé selon la revendication 10, incluant les étapes consistant à :

stocker une longueur de champ associée au champ ;

lire la longueur de champ ; et

sauter le champ en utilisant la longueur du champ si le lecteur de capteur ne reconnaît pas le champ et si le drapeau indique que le champ est facultatif.



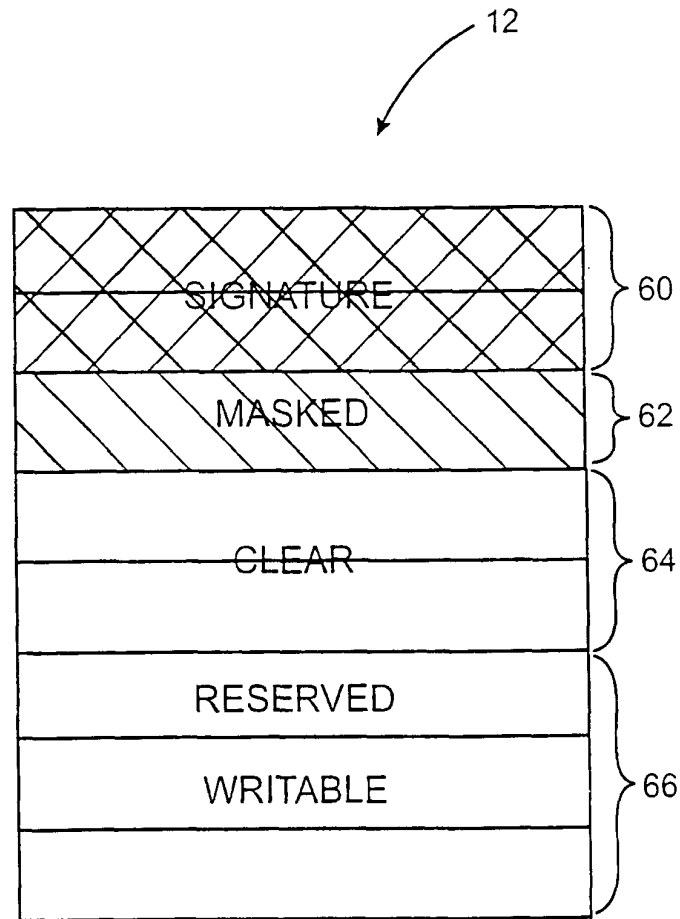


FIG. 2

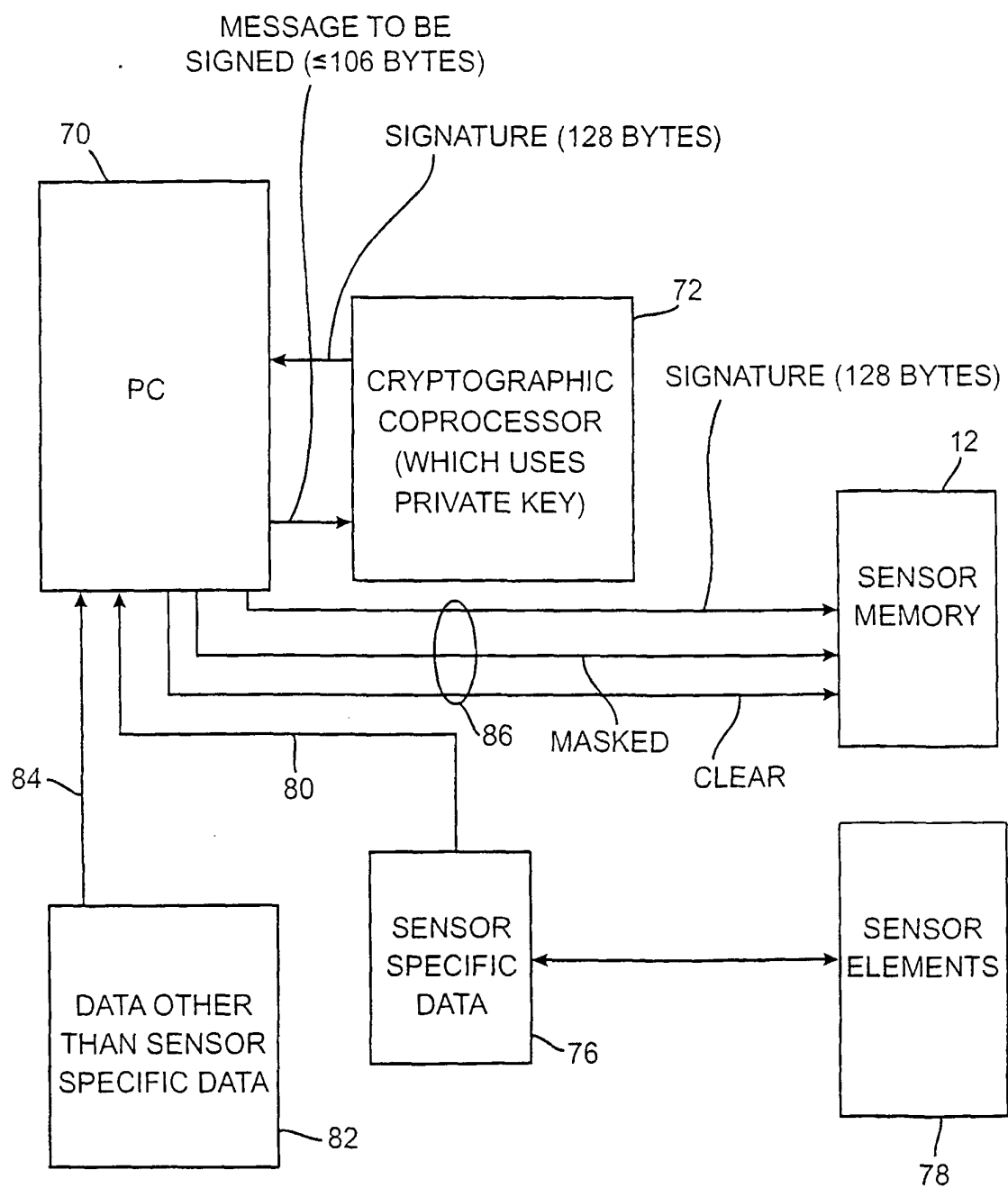


FIG. 3

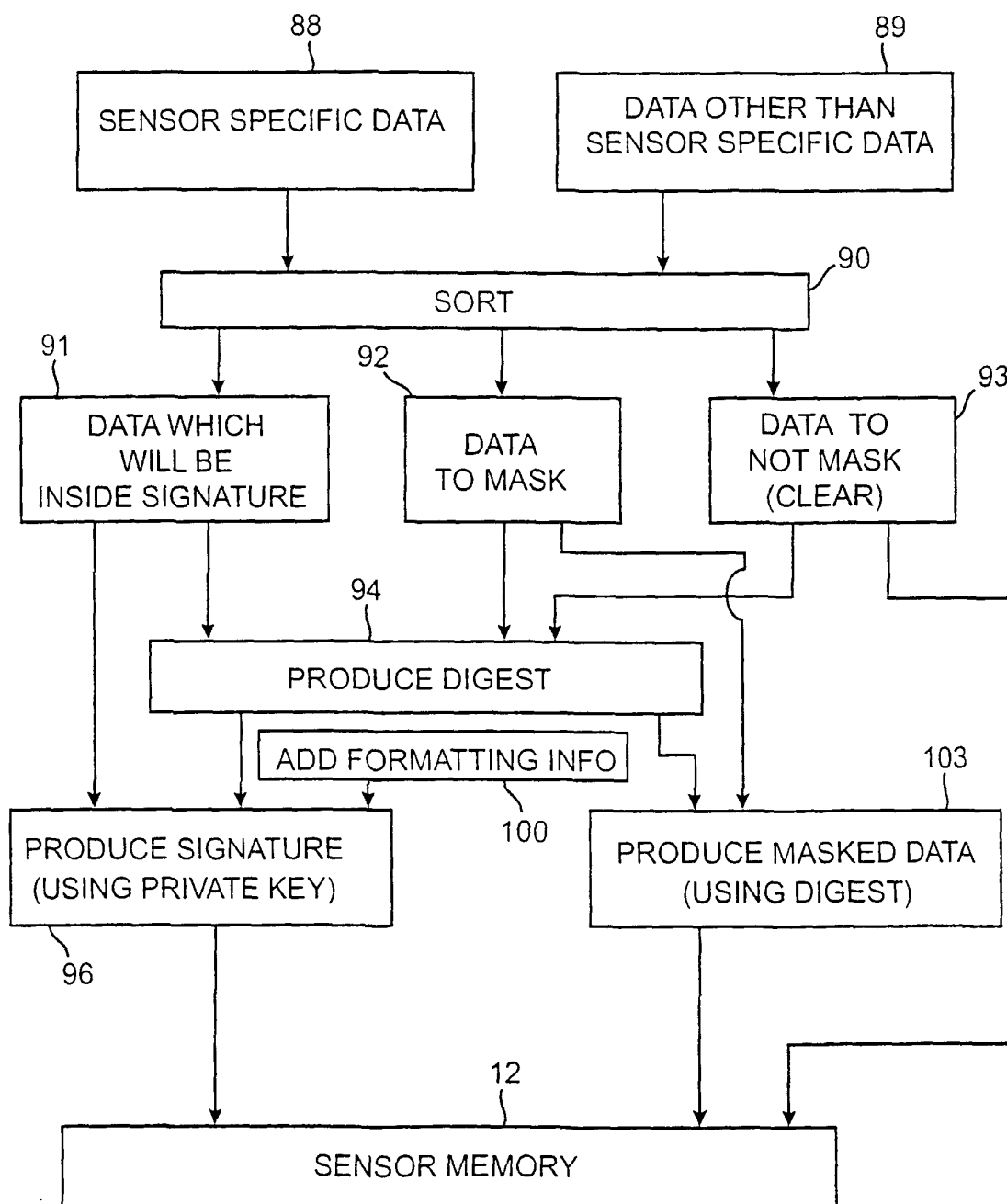


FIG.4

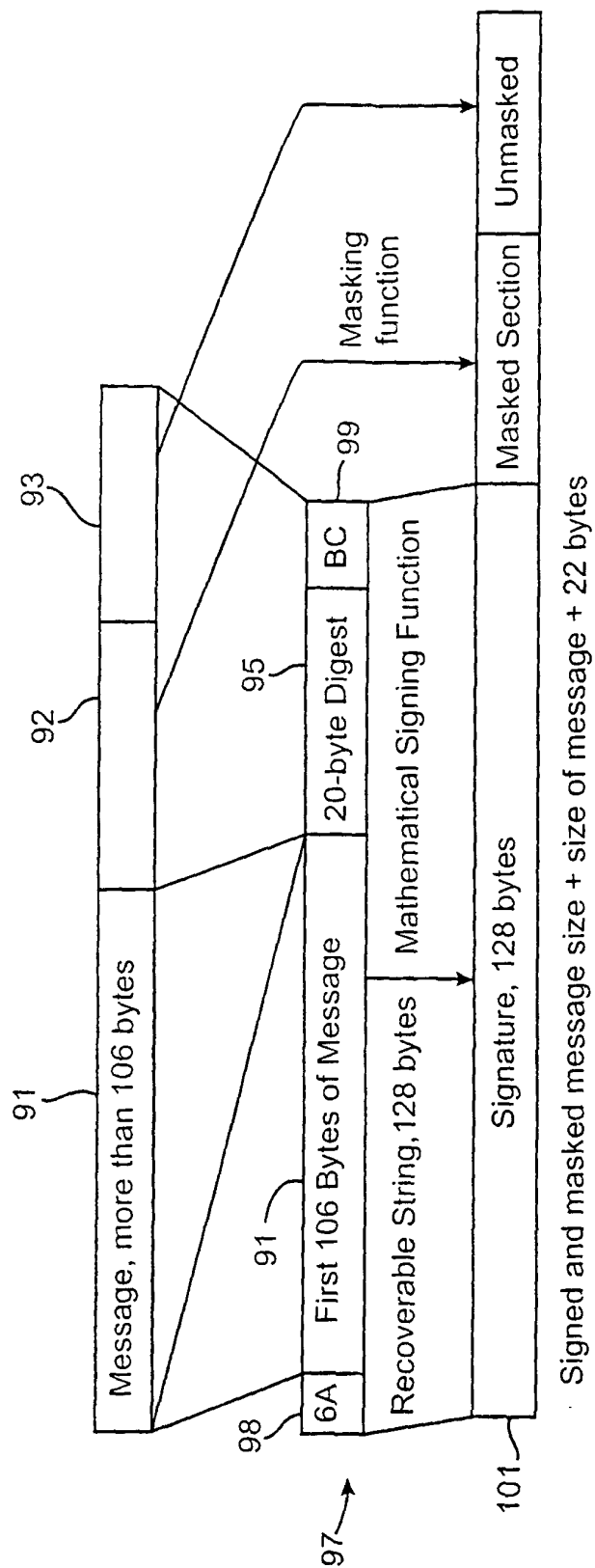


FIG. 5

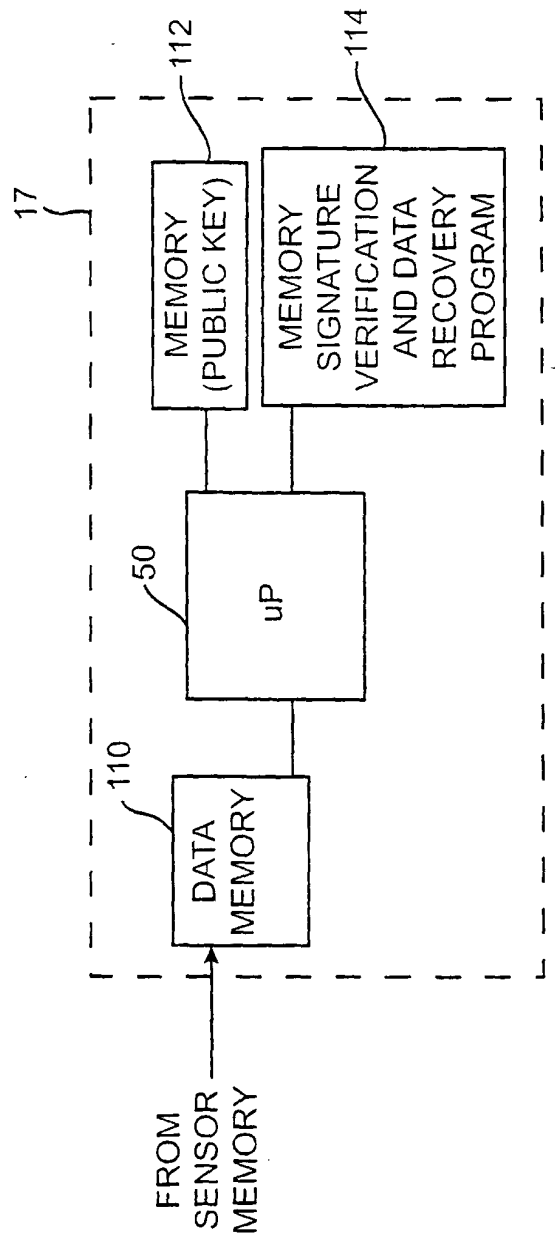


FIG. 6

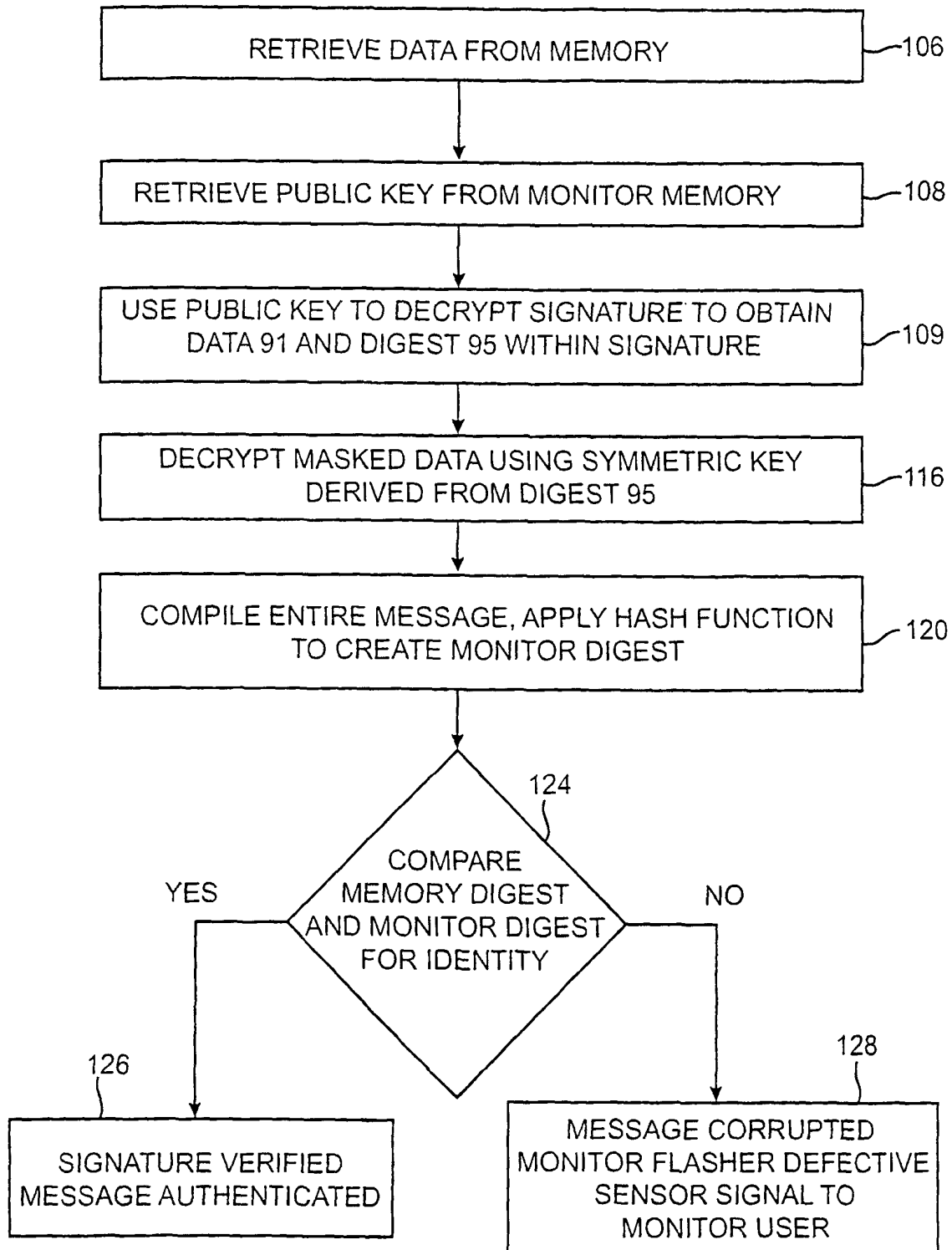


FIG. 7

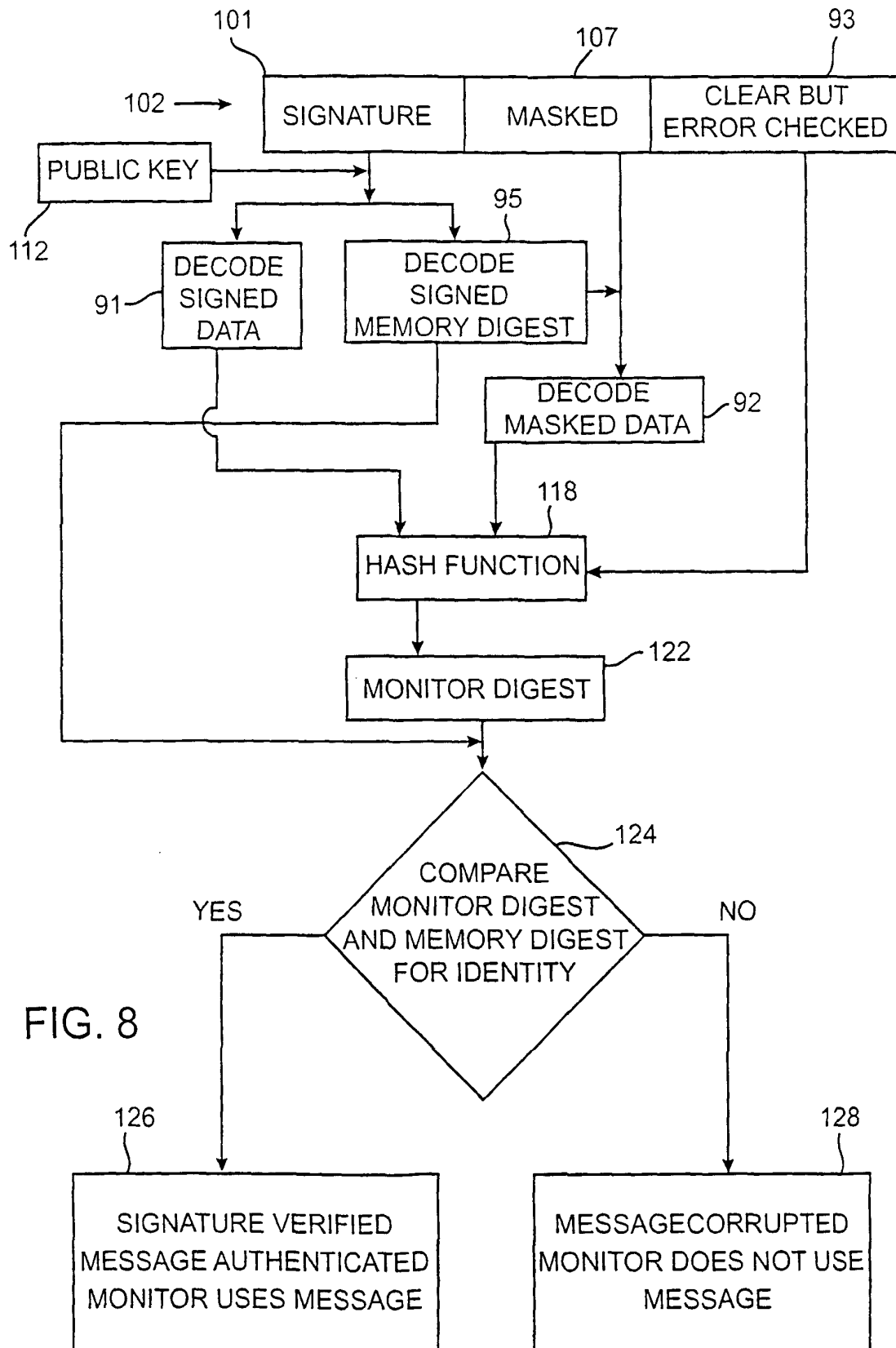


FIG. 8

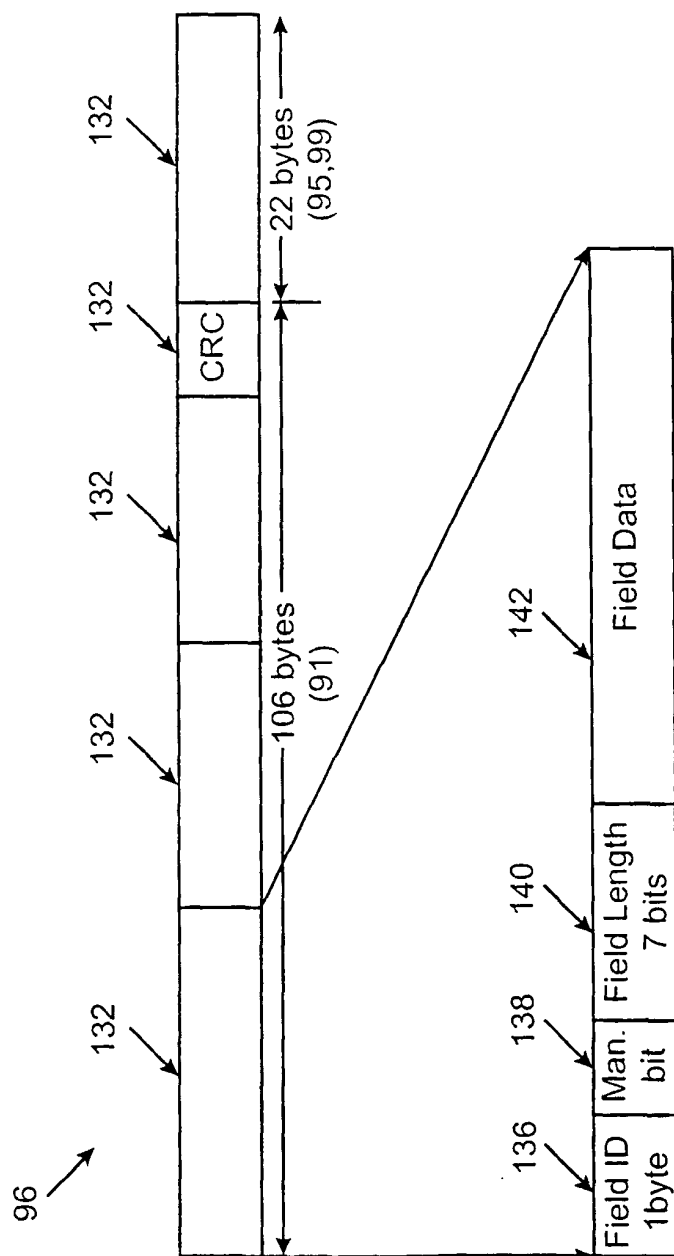


FIG. 9

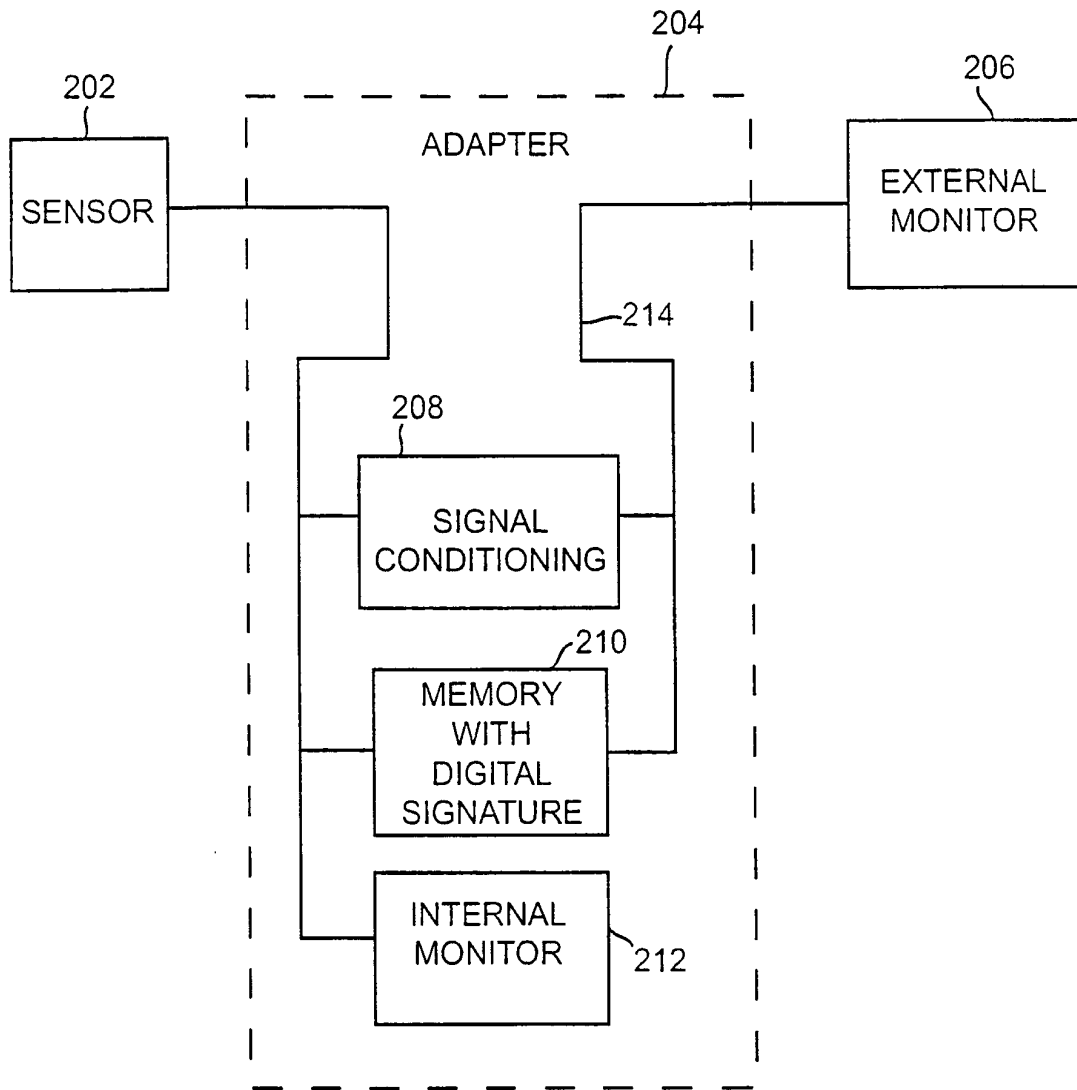


FIG. 10

专利名称(译)	传感器具有与传感器相关的数据的数字签名		
公开(公告)号	EP1215995B1	公开(公告)日	2005-12-21
申请号	EP2000968534	申请日	2000-09-28
[标]申请(专利权)人(译)	马林克罗特公司		
申请(专利权)人(译)	马林克罗特INC.		
当前申请(专利权)人(译)	马林克罗特INC.		
[标]发明人	BERSON THOMAS A OLSON BRYAN FEIN MICHAEL E MANNHEIMER PAUL D PORGES CHARLES E SCHLOEMER DAVID		
发明人	BERSON, THOMAS, A. OLSON, BRYAN FEIN, MICHAEL, E. MANNHEIMER, PAUL, D. PORGES, CHARLES, E. SCHLOEMER, DAVID		
IPC分类号	A61B5/145 A61B5/00 A61B5/1455 G06F1/00 G06F12/14 G06F21/24 H04L9/32		
CPC分类号	A61B5/14551 A61B2562/08 G06F21/64 G06F2211/008 G06F2221/2107 H04L9/3247 H04L2209/805 A61B2562/085 G06F21/6209 H04L2209/88		
代理机构(译)	GRUBERT , ANDREAS		
优先权	60/156488 1999-09-28 US 09/662246 2000-09-14 US		
其他公开文献	EP1215995A1		
外部链接	Espacenet		

摘要(译)

传感器具有对监视器有用的代码，可以认证为准确。传感器产生对应于测量的生理特征的信号，并提供在监视器使用时可确保准确和真实的代码。与传感器相关联的存储器存储与传感器有关的数据和数字签名。数字签名通过确保由具有预定质量控制的实体生成来验证代码的质量，并确保代码准确。

