

(19) World Intellectual Property Organization
International Bureau



(43) International Publication Date
27 November 2008 (27.11.2008)

PCT

(10) International Publication Number
WO 2008/143814 A2

- (51) **International Patent Classification:**
A61N 1/05 (2006.01) A61B 5/00 (2006.01)
A61N 1/36 (2006.01)
 - (21) **International Application Number:**
PCT/US2008/006023
 - (22) **International Filing Date:** 12 May 2008 (12.05.2008)
 - (25) **Filing Language:** English
 - (26) **Publication Language:** English
 - (30) **Priority Data:**
11/749,500 16 May 2007 (16.05.2007) US
 - (71) **Applicant (for all designated States except US):** **CARDIAC PACEMAKERS, INC.** [US/US]; 4100 Hamline Avenue North, St. Paul, Minnesota 55112-5798 (US).
 - (72) **Inventors; and**
 - (75) **Inventors/Applicants (for US only):** **AMURTHUR, Badri** [US/US]; 4225 Alden Drive, Edina, Minnesota 55416 (US). **LIBBUS, Imad** [US/US]; 1726 Stanford Avenue, St. Paul, Minnesota 55105 (US).
 - (74) **Agents:** **CLISE, Timothy B.** et al.; Schwegman, Lundberg & Woessner, P.A., P.O. Box 2938, Minneapolis, Minnesota 55402 (US).
 - (81) **Designated States (unless otherwise indicated, for every kind of national protection available):** AE, AG, AL, AM, AO, AT, AU, AZ, BA, BB, BG, BH, BR, BW, BY, BZ, CA, CH, CN, CO, CR, CU, CZ, DE, DK, DM, DO, DZ, EC, EE, EG, ES, FI, GB, GD, GE, GH, GM, GT, HN, HR, HU, ID, IL, IN, IS, JP, KE, KG, KM, KN, KP, KR, KZ, LA, LC, LK, LR, LS, LT, LU, LY, MA, MD, ME, MG, MK, MN, MW, MX, MY, MZ, NA, NG, NI, NO, NZ, OM, PG, PH, PL, PT, RO, RS, RU, SC, SD, SE, SG, SK, SL, SM, SV, SY, TJ, TM, TN, TR, TT, TZ, UA, UG, US, UZ, VC, VN, ZA, ZM, ZW.
 - (84) **Designated States (unless otherwise indicated, for every kind of regional protection available):** ARIPO (BW, GH, GM, KE, LS, MW, MZ, NA, SD, SL, SZ, TZ, UG, ZM, ZW), Eurasian (AM, AZ, BY, KG, KZ, MD, RU, TJ, TM), European (AT, BE, BG, CH, CY, CZ, DE, DK, EE, ES, FI, FR, GB, GR, HR, HU, IE, IS, IT, LT, LU, LV, MC, MT, NL, NO, PL, PT, RO, SE, SI, SK, TR), OAPI (BF, BJ, CF, CG, CI, CM, GA, GN, GQ, GW, ML, MR, NE, SN, TD, TG).
- Published:**
— without international search report and to be republished upon receipt of that report

(54) **Title:** SYSTEMS AND METHODS FOR STIMULATING NEURAL TARGETS



Fig. 2B

(57) **Abstract:** Disclosed herein, among other things, is a method for stimulating neural targets in the vicinity of a human ear. According to an embodiment, a device is clipped on a patient ear lobe, the device including a neural stimulation electrode. A neural stimulation signal is applied to the electrode to transcutaneously stimulate neural targets in the vicinity of the ear lobe, according to an embodiment. A physiological parameter is sensed using a sensor connected to the device. According to an embodiment, the neural stimulation signal is adjusted in response to the sensed parameter. The method is used in a variety of treatment regimens, including anti-hypertensive and cardiac improvement therapy.

WO 2008/143814 A2

SYSTEMS AND METHODS FOR STIMULATING NEURAL TARGETS

5 CLAIM OF PRIORITY

[0001] Benefit of priority is hereby claimed to U.S. Patent Application Serial Number 11/749,500, filed May 16, 2007, which application is herein incorporated by reference.

10 TECHNICAL FIELD

[0002] This disclosure relates generally to medical devices, and more particularly to systems and methods for stimulating neural targets in the vicinity of a human ear.

15 BACKGROUND

[0003] Neural stimulation has been the subject of a number of studies and has been proposed for several therapies. The autonomic system controls physiological activities of the body and the imbalance of autonomic tone is related to many diseases and conditions. Reduced autonomic balance (increase
20 in sympathetic and decrease in parasympathetic cardiac tone) during heart failure has been shown to be associated with left ventricular dysfunction and increased mortality. Sympathetic inhibition, as well as parasympathetic activation, has been associated with reduced arrhythmia vulnerability following a myocardial infarction. Vagus nerve stimulation has been proposed to treat sleep disorders,
25 gastrointestinal motility, eating disorders, obesity, anorexia, gastrointestinal tract disorders, hypertension, coma, and epilepsy. Direct electrical stimulation of parasympathetic nerves can activate the baroreflex, inducing a reduction of sympathetic nerve activity and reducing blood pressure by decreasing vascular resistance. Direct stimulation of the vagal parasympathetic fibers has been
30 shown to reduce heart rate via the sympathetic nervous system. In addition, some research indicates that chronic stimulation of the vagus nerve may be of protective myocardial benefit following cardiac ischemic insult. However, implantation of electrodes is an invasive procedure, and it can be difficult to immediately implant electrodes after a myocardial infarction.

[0004] Neural stimulation targeting other nerves has shown similar beneficial effect. Improved systems and methods for stimulating neural targets are needed.

5

SUMMARY

[0005] Disclosed herein, among other things, is a device for mounting to an ear lobe of a patient. The device includes a clip adapted to detachably attach to the ear lobe, according to an embodiment. The device also includes a neural stimulator including an electrode. The neural stimulator is adapted to stimulate neural targets in the vicinity of the ear lobe. The neural stimulator is further adapted to communicate with a stimulation circuit to receive a neural stimulation signal. The device also includes a sensor adapted to monitor a physiological parameter. The device titrates therapy using the physiological parameter, according to various embodiments. In one embodiment, the sensor includes an infrared sensor. The sensor includes a pulse oximetry sensor, in an embodiment.

[0006] Disclosed herein, among other things, is a method for stimulating neural targets in the vicinity of a human ear. According to an embodiment, a device is clipped on a patient ear lobe, the device including a neural stimulation electrode. A neural stimulation signal is applied to the electrode to transcutaneously stimulate neural targets in the vicinity of the ear lobe, according to an embodiment. A physiological parameter is sensed using a sensor connected to the device. According to an embodiment, the neural stimulation signal is adjusted in response to the sensed parameter.

[0007] Disclosed herein, among other things, is a method for treatment of high blood pressure. According to an embodiment, a patient is identified who could benefit from blood pressure reduction therapy. Therapy for blood pressure reduction is delivered to the patient, including delivering neural stimulation to transcutaneously stimulate neural targets in the vicinity of the ear lobe, according to various embodiments.

[0008] Disclosed herein, among other things, is a method for cardiac function improvement treatment. According to an embodiment, a patient is identified who could benefit from cardiac function improvement therapy. Therapy for cardiac function improvement is delivered to the patient, including

delivering neural stimulation to transcutaneously stimulate neural targets in the vicinity of the ear lobe, according to various embodiments.

[0009] This Summary is an overview of some of the teachings of the present application and not intended to be an exclusive or exhaustive treatment of the present subject matter. Further details about the present subject matter are found in the detailed description and appended claims. The scope of the present invention is defined by the appended claims and their legal equivalents.

BRIEF DESCRIPTION OF THE DRAWINGS

10 [0010] FIGS. 1A and 1B illustrate neural mechanisms for peripheral vascular control.

[0011] FIGS. 2A and 2B illustrate a neural stimulator with a neural stimulator electrode adapted to be clipped to an ear lobe to provide neural stimulation therapy, according to various embodiments.

15 [0012] FIG. 3 illustrates a block diagram of various embodiments of a neural stimulation device.

[0013] FIG. 4 illustrates an infrared sensor for use in a neural stimulation system, according to various embodiments.

[0014] FIG. 5 illustrates various embodiments of a neural stimulator to stimulate neural targets in the vicinity of a human ear in an open loop stimulation system.

[0015] FIG. 6 illustrates a neural stimulator to stimulate neural targets in the vicinity of a human ear in a closed loop stimulation system, according to various embodiments.

25 [0016] FIG. 7 illustrates an embodiment of a method for stimulating neural targets in the vicinity of a human ear.

[0017] FIG. 8 illustrates a method for treatment of high blood pressure, according to various embodiments.

[0018] FIG. 9 illustrates an embodiment of a method for cardiac function improvement treatment.

DETAILED DESCRIPTION

[0019] The following detailed description of the present subject matter refers to subject matter in the accompanying drawings which show, by way of

illustration, specific aspects and embodiments in which the present subject matter may be practiced. These embodiments are described in sufficient detail to enable those skilled in the art to practice the present subject matter. References to “an”, “one”, or “various” embodiments in this disclosure are not necessarily to the same embodiment, and such references contemplate more than one embodiment. The following detailed description is demonstrative and not to be taken in a limiting sense. The scope of the present subject matter is defined by the appended claims, along with the full scope of legal equivalents to which such claims are entitled.

10 [0020] Various embodiments of the present subject matter are related to systems and methods for stimulating neural targets in the vicinity of a human ear. The neural stimulation can be used for treating hypertension and/or coronary artery disease by chronically lowering blood pressure. The neural stimulation can also be used for treating heart failure by improving cardiac
15 function (cardiac function improvement therapy, or intermittent stress on the heart to improve health of the heart). The system for stimulating neural targets in the vicinity of a human ear can include a transcutaneous or implanted device, in various embodiments. Neural targets in the vicinity of the human ear include, but are not limited to, the auricular branch of the vagus nerve.

20 [0021] Various embodiments provide closed loop control of the neural stimulation. Some neural stimulator embodiments are integrated with a blood pressure monitor, and some sense blood pressure from the carotid artery. Other embodiments deliver the stimulation via an open loop system, such as may be provided by short term therapy, and intermittent or periodic therapies of relative
25 short duration, for example.

[0022] Transcutaneous and some superficial subcutaneous approaches to peripheral nerve stimulation are capable of avoiding direct neural contact with a stimulating electrode, thereby reducing problems associated with neural inflammation and injury commonly associated with direct contact electrodes.

30 [0023] Provided below is a discussion of neural physiology. The automatic nervous system (ANS) regulates “involuntary” organs, while the contraction of voluntary (skeletal) muscles is controlled by somatic motor nerves. Examples of involuntary organs include respiratory and digestive organs, and also include blood vessels and the heart. Often, the ANS functions in an involuntary,

reflexive manner to regulate glands, to regulate muscles in the skin, eye, stomach, intestines and bladder, and to regulate cardiac muscle and the muscle around blood vessels, for example. The nervous system includes afferent nerves, which transmit neural signals from the body (e.g. vascular control, body organs, and the like) to the central nervous system (CNS), and includes efferent nerves which transmit neural signals from the CNS out to the body.

[0024] The ANS includes, but is not limited to, the sympathetic nervous system and the parasympathetic nervous system. The sympathetic nervous system is affiliated with stress and the “fight or flight response” to emergencies. Among other effects, the “fight or flight response” increases blood pressure and heart rate to increase skeletal muscle blood flow, and decreases digestion to provide the energy for “fighting or fleeing.” The parasympathetic nervous system is affiliated with relaxation and the “rest and digest response” which, among other effects, decreases blood pressure and heart rate, and increases digestion to conserve energy. The ANS maintains normal internal function and works with the somatic nervous system.

[0025] FIGS. 1A and 1B illustrate neural mechanisms for peripheral vascular control. The vagus nerve is illustrated in these figures. FIG. 1A generally illustrates afferent nerves to vasomotor centers. An afferent nerve conveys impulses toward a nerve center (CNS). A vasomotor center relates to nerves that dilate and constrict blood vessels to control the size of the blood vessels. FIG. 1B generally illustrates efferent nerves from vasomotor centers. An efferent nerve conveys impulses away from a nerve center (CNS).

[0026] Stimulating the sympathetic and parasympathetic nervous systems can have effects other than heart rate and blood pressure. For example, stimulating the sympathetic nervous system dilates the pupil, reduces saliva and mucus production, relaxes the bronchial muscle, reduces the successive waves of involuntary contraction (peristalsis) of the stomach and the motility of the stomach, increases the conversion of glycogen to glucose by the liver, decreases urine secretion by the kidneys, and relaxes the wall and closes the sphincter of the bladder. Stimulating the parasympathetic nervous system (inhibiting the sympathetic nervous system) constricts the pupil, increases saliva and mucus production, contracts the bronchial muscle, increases secretions and motility in the stomach and large intestine, and increases digestion in the small intestine,

increases urine secretion, and contracts the wall and relaxes the sphincter of the bladder. The functions associated with the sympathetic and parasympathetic nervous systems are many and can be complexly integrated with each other.

[0027] The vagus nerve is an afferent nerve, such that the neural stimulation is transmitted to the CNS. Vagal stimulation simultaneously increases parasympathetic and decreases sympathetic activity, and is believed to prevent further remodeling or predisposition to fatal arrhythmias in post-MI patients, to help restore autonomic balance and increase HRV (heart rate variability), to increase parasympathetic and reduce sympathetic tone in hypertrophic cardiac myopathy (HCM), neurogenic hypertension, and arrhythmia protection, to reduce anginal symptoms, to increase coronary blood flow (CBF), and to prevent development of congestive heart failure (CHF) following MI.

[0028] The auricular nerve of the vagus nerve, which includes the greater auricular nerve and the lesser auricular nerve, originates from the cervical plexus. The greater auricular nerve innervates the surfaces of the outer ear, and the skin over the parotid gland and mastoid process. The parotid gland is a salivary gland found in front of the ears and that extends to the area beneath the earlobe along the lower border of the jawbone. The mastoid process is the conical prominence of the temporal bone of the human skull behind the ear.

[0029] The disclosure relates at least in part to a device for providing stimulation of neural targets near the ear lobe or ear canal for anti-hypertensive and/or cardiac function improvement. In one embodiment, the device is non-invasive. Examples include, but are not limited to, a clip-on ear lobe device (as in FIGS. 2A and 2B, for example) or ear plug (protruding into the ear canal) with a transcutaneous stimulator for chronic lowering of blood pressure or for systolic and diastolic dysfunction, improvement in left ventricular ejection fraction (LVEF), end-diastolic volume (EDV) and/or treatment of heart failure. In another embodiment, the device is implantable. Examples include, but are not limited to, a surgically implanted device in the inner ear for chronic lowering of blood pressure or for systolic and diastolic dysfunction, improvement in left ventricular ejection fraction (LVEF), end-diastolic volume (EDV) and/or treatment of heart failure. The device may be standalone, or communicate with other implanted devices such as a pacemaker, cardiac resynchronization therapy device (CRT), baroreceptor stimulator or vagal nerve stimulation device. When

communicating with another device, one of the devices may control the therapy delivery in the other device, and/or the devices may exchange sensor information for therapy titration. Since acupuncture channels meet in the ear, stimulation of neural targets in the vicinity of the ear has potential applications for pain management, obesity, eating disorders, and addiction, for example.

5 [0030] FIGS. 2A and 2B illustrate a neural stimulator with a neural stimulator electrode adapted to be clipped to an ear lobe to provide neural stimulation therapy, according to various embodiments. FIG. 2A illustrates a human ear 200 and a neural stimulation device 203 with neural stimulation electrode (e.g. bipolar electrode) adapted to be clipped to the lobe of the human ear. The neural stimulation electrode is connected to the neural stimulation device. The neural stimulation device is capable of providing appropriate neural stimulation to the neural stimulation electrode to elicit depolarization of the auricular nerve branch, or other neural target in the vicinity of the ear.

10 [0031] According to various embodiments, the illustrated neural stimulation device 203 functions as an open loop stimulation system. In the open loop system, the neural stimulation is applied based on a predetermined or programmed set of parameters. Thus, for example, various open loop embodiments stimulate with a predetermined waveform (e.g. white noise, square, sinusoidal, triangular, and the like), magnitude, frequency, burst frequency and duration. Some embodiments provide intermittent stimulation and some embodiments provide periodic stimulation. Periodic stimulation relates to stimulation at regular intervals. Intermittent stimulation relates to applying stimulation during some times but not at other times. Intermittent stimulation does not necessarily refer to providing stimulation at regular intervals.

15 [0032] According to various embodiments, the illustrated neural stimulation device 203 functions as a closed loop stimulation system. In the closed loop system, physiology signals are sensed. The neural stimulation device appropriately adjusts the applied neural stimulation therapy based on the sensed physiology sensors. Examples of physiology sensors include sensors to detect heart rate and blood pressure, and further includes electrocardiogram (ECG) monitors.

[0033] FIG. 2B illustrates a neural stimulation device 203 placed on the ear lobe using a clip 210. Other types of devices are possible without departing from the scope of the disclosure. Examples include, but are not limited to, expandable, stent-like electrode placed in the auditory canal, or implanted neural electrodes or devices. Various embodiments incorporate the electrode in an expandable foam, such as an ear plug, to quickly place the electrode against a surface of the external auditory canal. In some embodiments, the housing of the neural stimulation device is conductive, and functions as the electrode.

[0034] FIG. 3 illustrates a block diagram of a neural stimulation device, such as device 203 of FIGS. 2A-2B, according to various embodiments. According to one embodiment, the device 300 includes a clip (as illustrated in FIG. 2B) adapted to detachably attach to the ear lobe. The device also includes a neural stimulator 302 including an electrode 304. The neural stimulator 302 is adapted to stimulate neural targets in the vicinity of the ear lobe. The neural stimulator is further adapted to communicate with a stimulation circuit 306 to receive a neural stimulation signal. The device also includes a sensor 308 adapted to monitor a physiological parameter. According to various embodiments, the sensor 308 may include an infrared sensor, such as pulse oximetry sensor, interstitial sensor and light-emitting diode (LED) sensor, for example. The sensor(s) may be configured to sense blood pressure, glucose, respiratory rate and/or heart rate. The device titrates therapy using the physiological parameter, according to various embodiments.

[0035] According to various embodiments, the sensor 308 includes a blood pressure sensor adapted to sense a parameter indicative of blood pressure, where the neural stimulation signal is adapted to chronically lower blood pressure using the sensed parameter. The neural stimulator delivers stimulation therapy using a preprogrammed schedule to chronically lower blood pressure, according to an embodiment. According to various embodiments, the sensor 308 includes a cardiac function sensor adapted to sense a parameter indicative of cardiac function, where the neural stimulation signal is adapted to improve cardiac function using the sensed parameter. The neural stimulator delivers stimulation therapy using a preprogrammed schedule to improve cardiac function, according to an embodiment. In one embodiment, the device 300 further includes a

communication circuit. The communication circuit is adapted to communicate with an implantable and/or external device, in varying embodiments.

[0036] FIG. 4 illustrates an infrared sensor 400 for use in a neural stimulation system, according to various embodiments. An example of an
5 infrared sensor includes a pulse oximetry sensor, or other sensor for monitoring blood pressure, heart rate variability (HRV), glucose, respiratory rate, and/or heart rate. The sensor includes a light source 405 and a photodetector 410, according to an embodiment. The sensor is used to detect parameters in vessels
10 415 in extremities, such as a finger 420, toe, or ear lobe. In an embodiment, light absorption by hemoglobin differs depending upon the oxygen saturation, and pulse and oxygen saturation can be derived from the recorded signal (pulse oximetry embodiment). Other examples of infrared sensors may be implantable in various embodiments.

[0037] FIG. 5 illustrates a neural stimulator 515 to stimulate neural targets in
15 the vicinity of a human ear in an open loop stimulation system, according to various embodiments. Such a neural stimulation device is capable of functioning as the open loop embodiment of stimulators 203 and 302 in FIGS. 2A and 3. The illustrated neural stimulator embodiment 515 includes a neural stimulation circuit 516, a controller 517, and memory 518. The illustrated
20 embodiment further includes at least one port 519 to connect to at least one lead 520. Thus, for example, the lead(s) 520 is/are capable of detaching from the device 515, and other leads are capable of being used with the device. The neural stimulation circuit 516 is connected to the port(s) 519 to provide a neural stimulation signal to at least one neural stimulation electrode 521 on the lead(s)
25 520 to stimulate a neural target in the vicinity of a human ear when an appropriate signal is provided to an appropriately-positioned neural stimulation electrode or electrodes. Some embodiments stimulate the neural target using a single lead and a single electrode on the lead. However, multiple leads and multiple electrodes on the leads can be used. In various embodiments, the neural
30 stimulation electrode 521 is designed to be clipped to an ear lobe. In various embodiments, the neural stimulation electrode 521 is designed to be positioned in an external auditory canal. In various embodiments, the neural stimulation electrode 521 is designed to be a transcutaneous electrode, such as a patch electrode, positioned on the skin of the head behind the ear and over or otherwise

proximate to the ear. These ear placements are non-invasive. Implantable stimulators can also be used without departing from the scope of this disclosure. With non-invasive techniques, electrodes can be quickly positioned by a person who has minimal training, thus allowing therapy to be quickly applied. Thus, for
5 example, therapy can be quickly applied in an emergency setting. These embodiments also provide a quick, non-invasive way for anti-hypertensive and/or cardiac function improvement therapy.

[0038] The illustrated neural stimulator 515 further includes a transceiver or other input/output (IO) circuit 522, and an actuator 523. The IO circuit allows
10 the neural stimulator device to communicate with other devices, and thus can be used to program the neural stimulator device and/or upload historical neural stimulator data recorded over a period of time, for example. A wireless transceiver can be used to provide IO functions for both external and implantable devices. The actuator 523 provides a means for initiating a programmed
15 therapy. Various actuator embodiments include a switch, such as mechanical, electrical, electronic and magnetic switches. The actuator can be triggered by a physician, emergency personal or a patient to initiate a preprogrammed therapy. Thus, in various embodiments, for example, a patient is capable of initiating angina therapy by positioning a magnet next to an implantable embodiment of
20 the neural stimulator device.

[0039] The memory 518 includes computer-readable instructions that are capable of being operated on by the controller to perform functions of the device. Thus, in various embodiments, the controller is adapted to operate on the instructions to provide programmed stimulation therapies 524 such as anti-
25 hypertensive and cardiac function improvement therapies. Additionally, in various embodiments, the controller is adapted to set parameters of the neural stimulation signal and, in some embodiments, vary parameters of the neural stimulation signal to adjust the intensity of the neural stimulation, such as is generally illustrated by the stimulation intensity module 525. Some
30 embodiments control and/or vary the waveform, amplitude, frequency, burst frequency and duration, and some embodiments control and/or adjust various combinations of two or more of the waveform, amplitude, frequency, burst frequency and duration. Examples of waveforms include sinusoidal, square, triangular, and "white noise" signals. A white noise signal mimics naturally-

occurring neural activity. Various “open loop” systems vary the intensity of the neural stimulation according to a preprogrammed therapy to provide a desired affect. For example, some embodiments vary parameters of the neural stimulation signal to prevent or reduce neural adaptation to the neural stimulation signal.

5 [0040] FIG. 6 illustrates a neural stimulator to stimulate neural targets in the vicinity of a human ear in a closed loop stimulation system, according to various embodiments. Such a neural stimulation device is capable of functioning as the open loop embodiment of stimulators 203 and 302 in FIGS. 2A and 3. The illustrated neural stimulator embodiment 615 includes a neural stimulation circuit 616, a feedback circuit 626, a controller 617, and memory 618. The illustrated embodiment further includes at least one port 619 to connect to at least one lead 620. Thus, for example, the lead(s) is/are capable of detaching from the device, and other leads are capable of being used with the device. For example, one lead, which is connected to a first port, includes a neural stimulation electrode 621, and a second lead, which is connected to a second port, includes a physiology sensor 627. In another example, one lead, which is connected to one port, includes both a neural stimulation electrode 621 and a physiology sensor 627. Examples of physiology sensor 627 include, but are not limited to: infrared sensors such as a pulse oximetry sensor, or other sensor for monitoring blood pressure, heart rate variability (HRV), glucose, respiratory rate, and/or heart rate.

15 [0041] The neural stimulation circuit is connected to the port(s) to provide a neural stimulation signal to at least one neural stimulation electrode on the lead(s) to stimulate a neural target in the vicinity of a human ear when an appropriate signal is provided to an appropriately-positioned neural stimulation electrode. In various embodiments, the neural stimulation electrode 621 is designed to be clipped to an ear lobe. In various embodiments, the neural stimulation electrode 621 is designed to be positioned in an external auditory canal. In various embodiments, the neural stimulation electrode 621 is designed to be a transcutaneous electrode, such as a patch electrode, positioned on the skin of the head behind the ear and over or otherwise proximate to the ear. These ear placements are non-invasive. Implantable stimulators can also be used without departing from the scope of this disclosure.

[0042] The feedback circuit 626 is connected to the port(s) to receive a signal from the physiology sensor 627. The sensor senses a physiology function that depends, at least in part, on neural stimulation. Examples of such functions include heart rate and blood pressure. Thus, various embodiments implement a heart rate sensor as the physiology sensor, and various embodiments implement a blood pressure sensor as the physiology sensor. As stated, the physiology sensor includes an infrared sensor or pulse oximetry sensor, in various embodiments. The carotid artery runs proximate to the auricular nerve branch. Thus, various embodiments provide a sensor capable of directly detecting the heart rate from the carotid artery, and various embodiments provide a sensor capable of directly detecting blood pressure from the carotid artery. One example of such a sensor is an acoustic sensor adapted to sense blood flow. The sensed blood flow is capable of being used to determine blood pressure and/or heart rate. However, other sensor technology can be used. Transceiver 622, actuator 623, and memory 618 where previously discussed with respect to FIG. 5. This discussion is not repeated here for the sake of brevity.

[0043] The memory 618 includes computer-readable instructions that are capable of being operated on by the controller to perform functions of the device. Thus, in various embodiments, the controller is adapted to operate on the instructions to provide programmed neural stimulation therapies 624 such as anti-hypertensive and cardiac function improvement therapies. Various “closed loop” systems vary the intensity of the neural stimulation, as generally illustrated by the stimulation intensity module 625, based on the sensed physiology signal received by the feedback circuit according to a preprogrammed therapy to provide a desired affect. Thus, the closed loop system is capable of reducing and increasing the neural stimulation intensity as appropriate to maintaining some measured physiological parameters within an upper and lower boundary during the neural stimulation therapy.

[0044] FIG. 7 illustrates a method 700 for stimulating neural targets in the vicinity of a human ear, according to various embodiments. According to an embodiment, a device is clipped on a patient ear lobe at 705, the device including a neural stimulation electrode. At 710, a neural stimulation signal is applied to the electrode to transcutaneously stimulate neural targets in the vicinity of the ear lobe, according to an embodiment. At 715, a physiological

parameter is sensed using a sensor connected to the device. The sensor includes an infrared sensor, in one embodiment. Other sensors, such as to sense blood pressure, glucose, respiratory rate and/or heart rate, can be used without departing from the scope of this disclosure. According to an embodiment, the neural stimulation signal is adjusted in response to the sensed parameter, at 720. According to various embodiments, the sensed physiological parameter includes a parameter indicative of blood pressure, and the neural stimulation signal is applied to chronically lower blood pressure using the sensed parameter. The physiological parameter includes a parameter indicative of cardiac function, and the neural stimulation signal is applied to improve cardiac function using the sensed parameter, according to various embodiments.

[0045] FIG. 8 illustrates a method 800 for treatment of high blood pressure, according to various embodiments. According to an embodiment, a patient is identified who could benefit from blood pressure reduction therapy, at 805. At 810, therapy for blood pressure reduction is delivered to the patient, including delivering neural stimulation to transcutaneously stimulate neural targets in the vicinity of the ear lobe, according to various embodiments. According to various embodiments, neural stimulation is delivered from a device that clips on to an ear lobe of a patient. Neural stimulation is delivered to an auricular branch of a vagal nerve, in an embodiment. Other neural targets are used in varying embodiments. In one embodiment, a patient is identified for therapy using an external sensor. In another embodiment, a patient is identified for therapy using an implanted sensor. Blood pressure can be sensed using either an implanted or external sensor, and neural stimulation adjusted (frequency, duration, etc.) using the sensed blood pressure, in a closed loop system embodiment.

[0046] FIG. 9 illustrates a method 900 for cardiac function improvement treatment, according to various embodiments. According to an embodiment, a patient is identified who could benefit from cardiac function improvement therapy, at 905. At 910, therapy for cardiac function improvement is delivered to the patient, including delivering neural stimulation to transcutaneously stimulate neural targets in the vicinity of the ear lobe, according to various embodiments. According to various embodiments, a patient is identified for therapy at least partially by sensing a parameter indicative of cardiac function. Examples of sensed parameters include, but are not limited to, respiratory rate,

heart rate, and glucose level. According to an embodiment, a parameter indicative of cardiac function is sensed using a pulse oximetry sensor, or other infrared or LED sensor. Neural stimulation can be adjusted (frequency, duration, etc.) using the sensed parameter indicative of cardiac function, in a closed loop system embodiment.

5 [0047] Various embodiments of the methods of FIGS. 8 and 9 use a non-invasive technique to position the neural stimulation electrode, such as clipping the electrode on a patient ear lobe, positioning a bipolar electrode in the external auditory canal or positioning a transcutaneous electrode behind the ear and over the auricular nerve branch. Various embodiments use a minimally-invasive
10 technique to position the neural stimulation electrode, such as subcutaneously implanting a neural stimulator and an electrode to stimulate the auricular nerve branch.

[0048] The illustrated methods 700, 800, 900 are capable of being stored as
15 computer-readable instructions in a memory such as memory 518, 618, and operated on by controller such as controller 517, 617, in FIGS. 5, 6, to provide a desired neural stimulation therapy.

[0049] Although specific embodiments have been illustrated and described
herein, it will be appreciated by those of ordinary skill in the art that any
20 arrangement which is calculated to achieve the same purpose may be substituted for the specific embodiment shown. It is to be understood that the above description is intended to be illustrative, and not restrictive. The scope of the present subject matter should be determined with reference to the appended claims, along with the full scope of equivalents to which such claims are entitled.

We claim:

1. A device for mounting to an ear lobe of a patient, comprising:
a clip adapted to detachably attach to the ear lobe;
a neural stimulator including an electrode, the neural stimulator adapted
5 to stimulate neural targets in the vicinity of the ear lobe, the stimulator further
adapted to communicate with a stimulation circuit to receive a neural stimulation
signal; and
a sensor adapted to monitor a physiological parameter,
wherein the device titrates therapy using the physiological parameter.
10
2. The device of claim 1, wherein the sensor includes a blood pressure
sensor adapted to sense a parameter indicative of blood pressure, wherein the
neural stimulation signal is adapted to chronically lower blood pressure using the
sensed parameter.
15
3. The device of claim 1, wherein the neural stimulator delivers stimulation
therapy using a preprogrammed schedule to chronically lower blood pressure.
4. The device of claim 1, wherein the sensor includes a cardiac function
20 sensor adapted to sense a parameter indicative of cardiac function, wherein the
neural stimulation signal is adapted to improve cardiac function using the sensed
parameter.
- 5 The device of claim 1, wherein the neural stimulator delivers stimulation
25 therapy using a preprogrammed schedule to improve cardiac function.
6. The device of claim 1, further comprising a communication circuit
adapted to communicate with an implantable device.
- 30 7. The device of claim 1, wherein the sensor includes an infrared sensor.

8. A device, comprising:
an electrode plug adapted to be placed in an external auditory canal of an ear;
a neural stimulator electrically connected to the electrode plug, the neural
5 stimulator adapted to stimulate neural targets in the vicinity of the ear, the
stimulator further adapted to communicate with a stimulation circuit to receive a
neural stimulation signal; and
a sensor adapted to monitor a physiological parameter,
wherein the device titrates therapy using the physiological parameter.
- 10
9. The device of claim 8, wherein the electrode plug includes an expandable
foam.
10. The device of claim 8, wherein the sensor includes an infrared sensor.
- 15
11. The device of claim 10, wherein the infrared sensor includes a pulse
oximetry sensor.
12. The device of claim 8, wherein the sensor includes a blood pressure
20 sensor adapted to sense a parameter indicative of blood pressure, wherein the
neural stimulation signal is adapted to chronically lower blood pressure using the
sensed parameter.
13. The device of claim 8, wherein the neural stimulator delivers stimulation
25 therapy using a preprogrammed schedule to chronically lower blood pressure.
14. The device of claim 8, wherein the sensor includes a cardiac function
sensor adapted to sense a parameter indicative of cardiac function, wherein the
neural stimulation signal is adapted to improve cardiac function using the sensed
30 parameter.
- 15 The device of claim 8, wherein the neural stimulator delivers stimulation
therapy using a preprogrammed schedule to improve cardiac function.

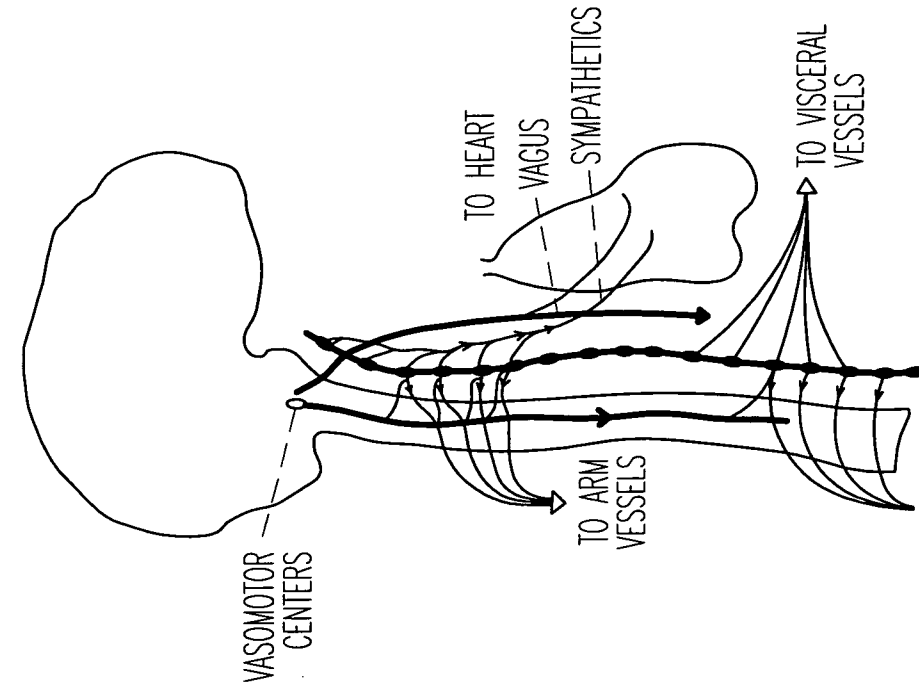


Fig. 1B

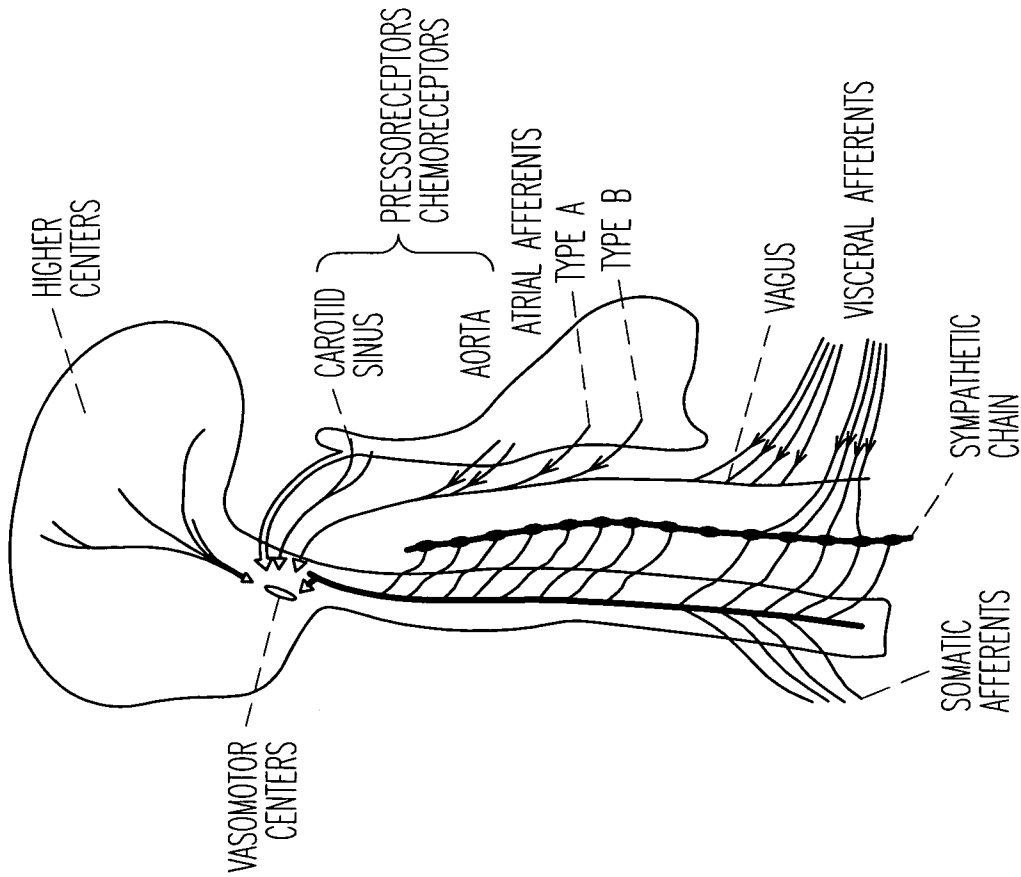


Fig. 1A

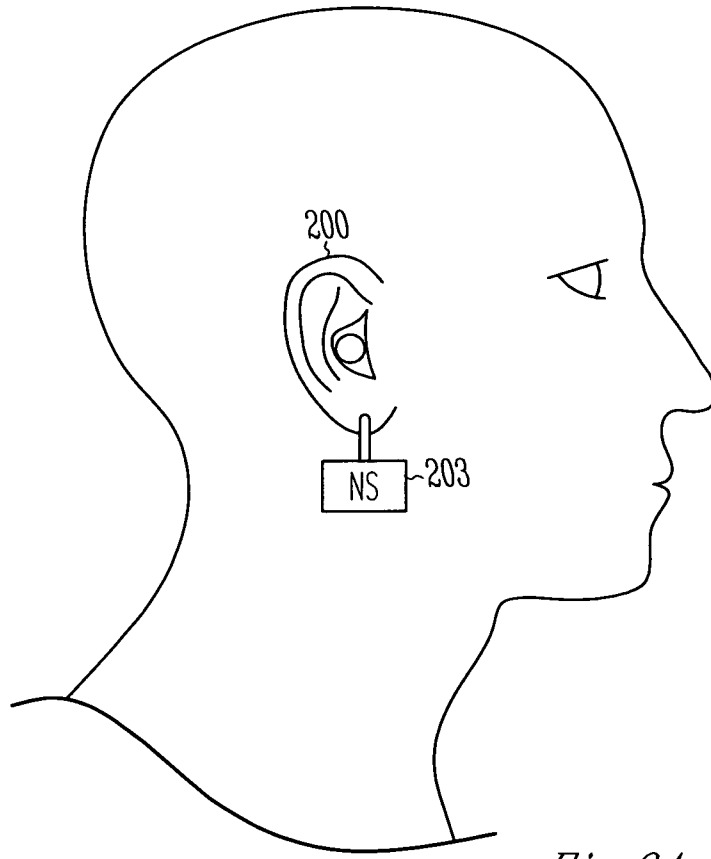


Fig. 2A



Fig. 2B

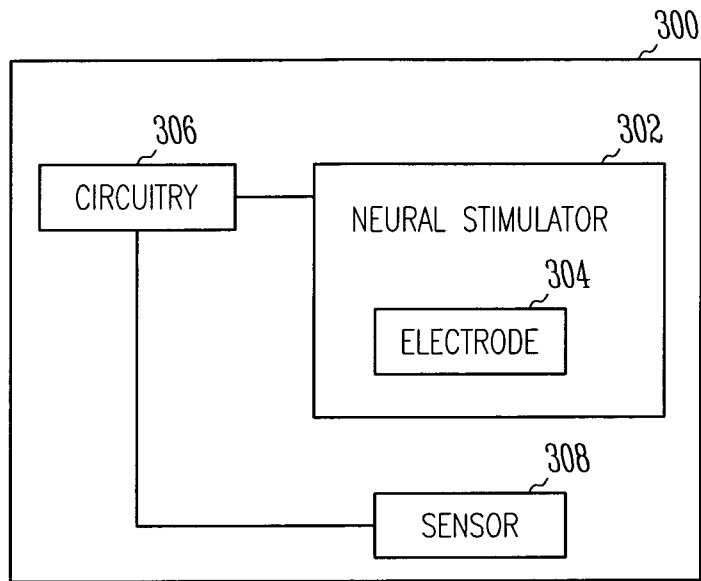


Fig. 3

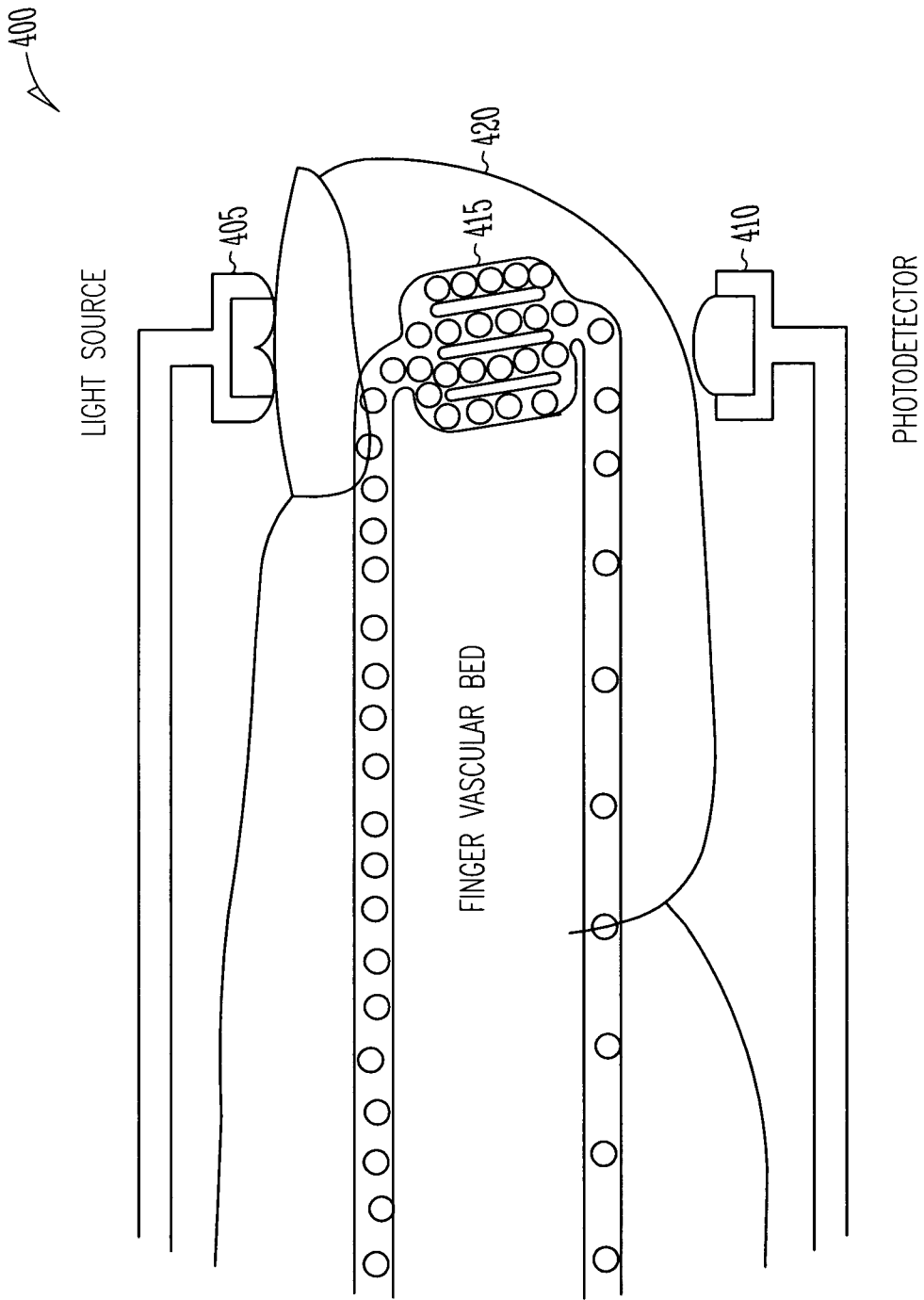


Fig. 4

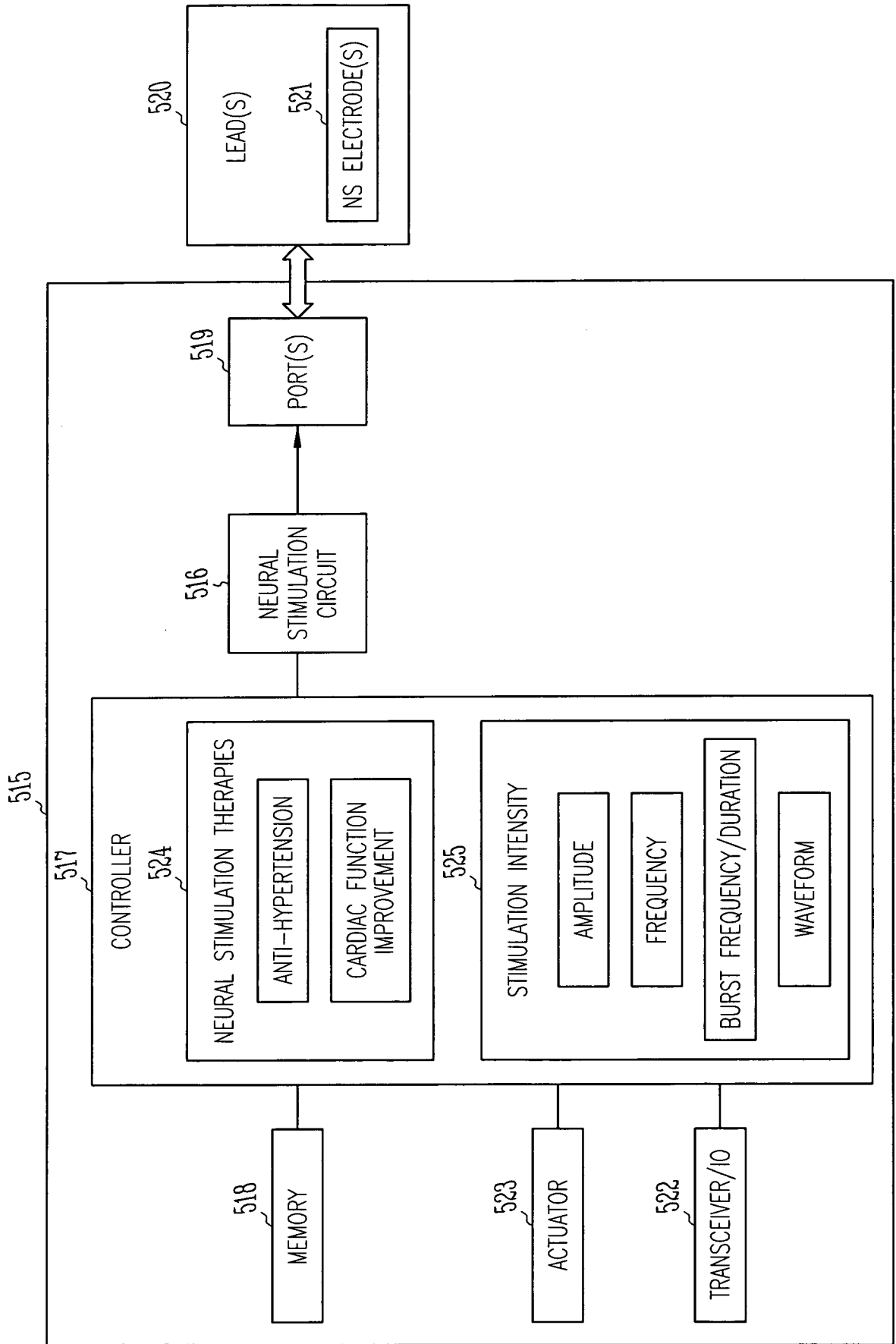


Fig. 5

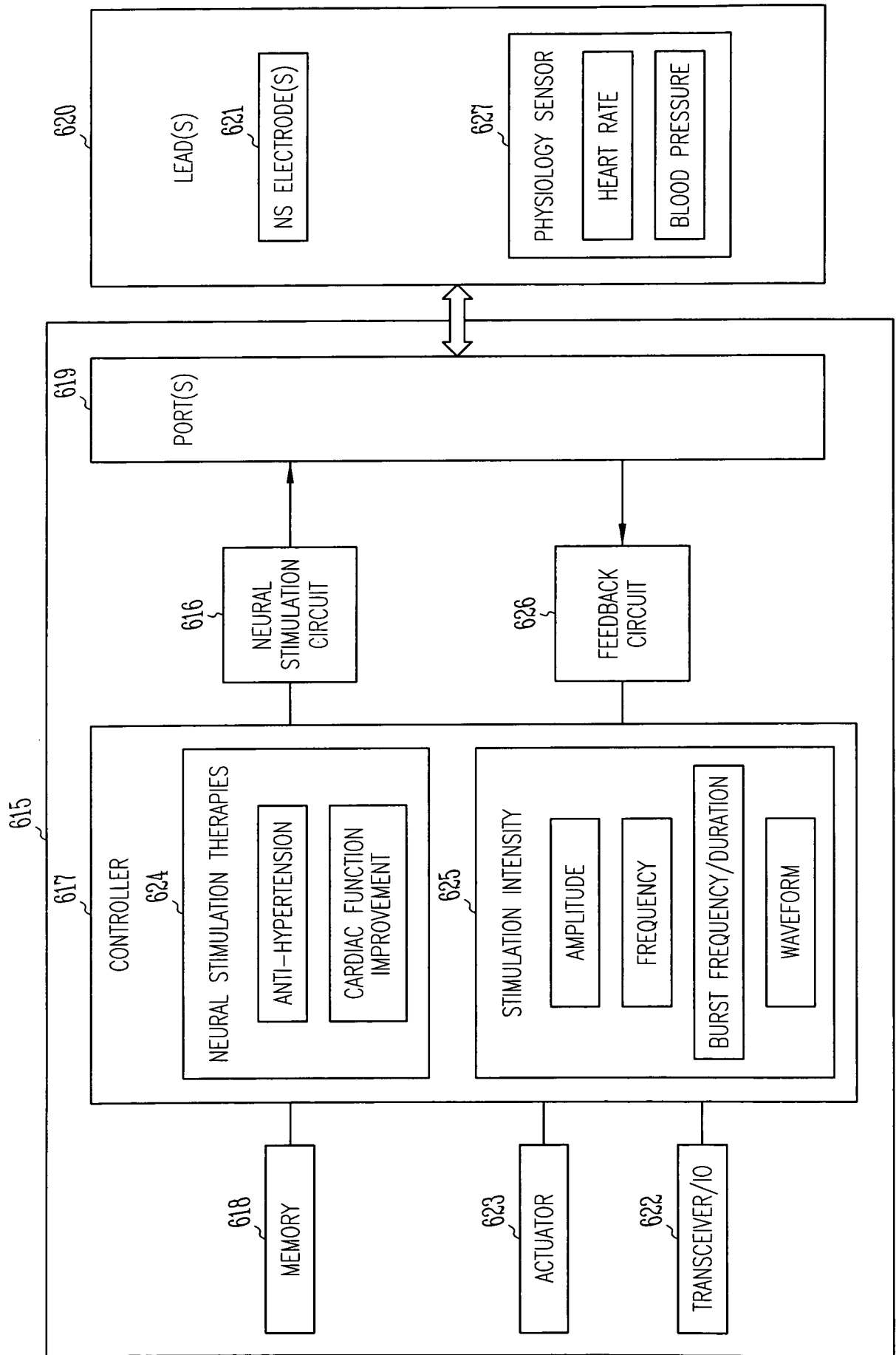
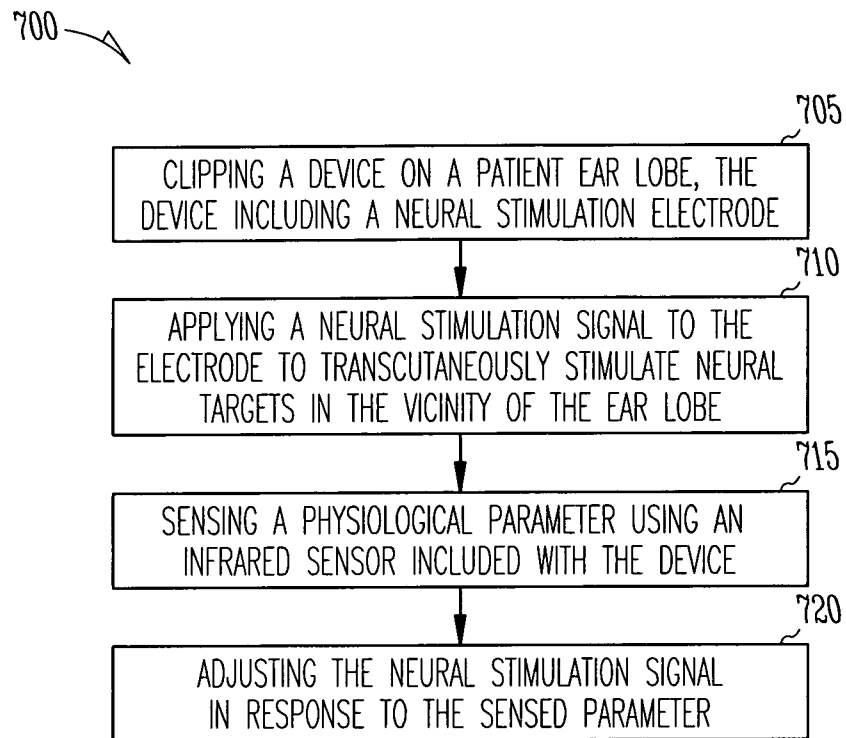


Fig. 6

7/8

*Fig. 7*

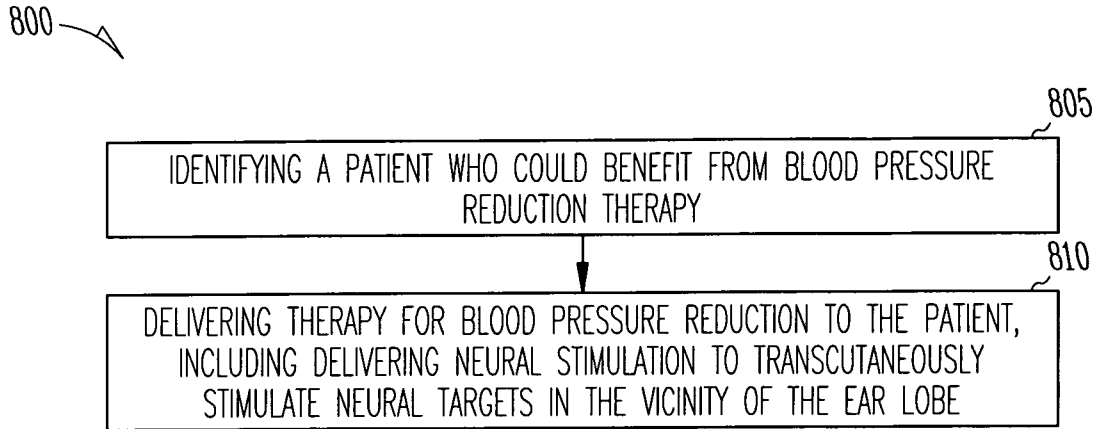


Fig. 8

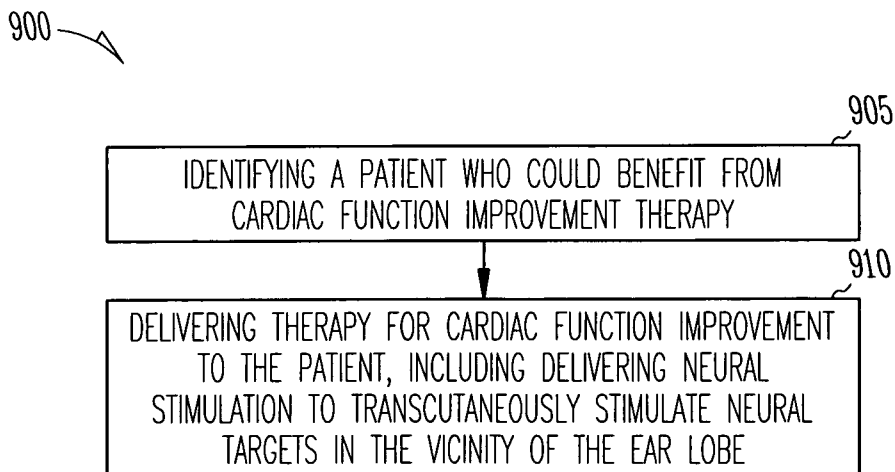


Fig. 9

专利名称(译)	用于刺激神经靶标的系统和方法		
公开(公告)号	EP2152355A2	公开(公告)日	2010-02-17
申请号	EP2008754350	申请日	2008-05-12
[标]申请(专利权)人(译)	心脏起搏器股份公司		
申请(专利权)人(译)	心脏起搏器, INC.		
当前申请(专利权)人(译)	心脏起搏器, INC.		
[标]发明人	AMURTHUR BADRI LIBBUS IMAD		
发明人	AMURTHUR, BADRI LIBBUS, IMAD		
IPC分类号	A61N1/05 A61N1/36 A61B5/00		
CPC分类号	A61N1/36017 A61B5/021 A61B5/02405 A61B5/02416 A61B5/026 A61B5/14532 A61B5/1455 A61B5/4041 A61B5/6815 A61B5/6826 A61B5/6838 A61B8/06 A61N1/0452 A61N1/0456 A61N1/0492 A61N1/36114 A61N1/36117		
代理机构(译)	法思博事务所		
优先权	11/749500 2007-05-16 US		
外部链接	Espacenet		

摘要(译)

其中, 本文公开了一种用于刺激人耳附近的神经靶标的方法。根据一个实施例, 将装置夹在患者耳垂上, 该装置包括神经刺激电极。根据一个实施例, 将神经刺激信号施加到电极以经皮刺激耳垂附近的神经靶标。使用连接到设备的传感器感测生理参数。根据一个实施例, 响应于所感测的参数来调整神经刺激信号。该方法使用的是多种治疗方案, 包括抗高血压和心脏改善疗法。