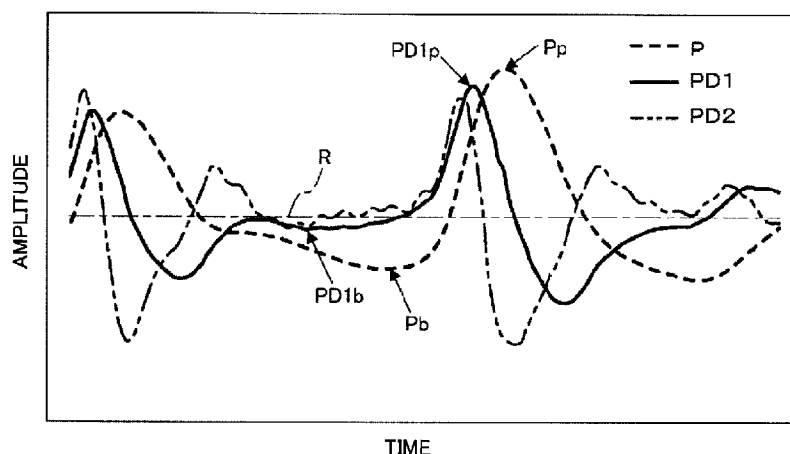




- (51) **International Patent Classification:**  
*A61B 5/00* (2006.01)      *A61B 5/022* (2006.01)
- (21) **International Application Number:**  
PCT/JP2018/011062
- (22) **International Filing Date:**  
20 March 2018 (20.03.2018)
- (25) **Filing Language:** English
- (26) **Publication Language:** English
- (30) **Priority Data:**  
2017-065003      29 March 2017 (29.03.2017)      JP
- (71) **Applicant:** **NIHON KOHDEN CORPORATION**  
[JP/JP]; 31-4, Nishiochiai 1-chome, Shinjuku-ku, Tokyo,  
1618560 (JP).
- (72) **Inventor:** **KIKUCHI Yoshiharu**; c/o NIHON KOHDEN  
CORPORATION, 1-6, Kusunokidai 1-Chome, Tokoroza-  
wa-shi, Saitama, 3590037 (JP).
- (74) **Agent:** **SHIN-EI PATENT FIRM, P.C.**; Toranomom East  
Bldg. 8F, 7-13, Nishi-Shimbashi 1-chome, Minato-ku,  
Tokyo, 1050003 (JP).
- (81) **Designated States** (*unless otherwise indicated, for every  
kind of national protection available*): AE, AG, AL, AM,  
AO, AT, AU, AZ, BA, BB, BG, BH, BN, BR, BW, BY, BZ,  
CA, CH, CL, CN, CO, CR, CU, CZ, DE, DJ, DK, DM, DO,  
DZ, EC, EE, EG, ES, FI, GB, GD, GE, GH, GM, GT, HN,  
HR, HU, ID, IL, IN, IR, IS, JO, KE, KG, KH, KN, KP, KR,  
KW, KZ, LA, LC, LK, LR, LS, LU, LY, MA, MD, ME, MG,  
MK, MN, MW, MX, MY, MZ, NA, NG, NI, NO, NZ, OM,  
PA, PE, PG, PH, PL, PT, QA, RO, RS, RU, RW, SA, SC,  
SD, SE, SG, SK, SL, SM, ST, SV, SY, TH, TJ, TM, TN, TR,  
TT, TZ, UA, UG, US, UZ, VC, VN, ZA, ZM, ZW.
- (84) **Designated States** (*unless otherwise indicated, for every  
kind of regional protection available*): ARIPO (BW, GH,  
GM, KE, LR, LS, MW, MZ, NA, RW, SD, SL, ST, SZ, TZ,  
UG, ZM, ZW), Eurasian (AM, AZ, BY, KG, KZ, RU, TJ,  
TM), European (AL, AT, BE, BG, CH, CY, CZ, DE, DK,

(54) **Title:** BLOOD PRESSURE MEASURING APPARATUS

**FIG. 3A**



(57) **Abstract:** A blood pressure measuring apparatus (2) for measuring a blood pressure of a subject (100) using a cuff (3) attached to the subject (100) is equipped with a processor (221) and a memory (222) configured to store instructions that is readable by the processor (221). As the instructions are executed by the processor (221), the blood pressure measuring apparatus (2) generates a pulsation signal (P) of the subject (100) while increasing an inner pressure of the cuff (3); generates a first-order differential signal (PD1) by differentiating the pulsation signal (P). The blood pressure measuring apparatus (2) then detects an inappropriate attachment state of the cuff on the basis of at least one of: a bottom value (PD1b) of the first-order differential signal (PD1); a relationship between a peak value (PD1p) and the bottom value (PD1b) of the first-order differential signal (PD1); an amplitude amount of the first-order differential signal (PD1) including the bottom value (PD1b) in a unit time; and a relationship between said amplitude amount and an amplitude amount of the first-order differential signal (PD1) including the peak value (PD1p) in a unit time.



EE, ES, FI, FR, GB, GR, HR, HU, IE, IS, IT, LT, LU, LV,  
MC, MK, MT, NL, NO, PL, PT, RO, RS, SE, SI, SK, SM,  
TR), OAPI (BF, BJ, CF, CG, CI, CM, GA, GN, GQ, GW,  
KM, ML, MR, NE, SN, TD, TG).

**Published:**

— *with international search report (Art. 21(3))*

## Description

### Title of Invention: BLOOD PRESSURE MEASURING APPARATUS

#### Technical Field

[0001] The present disclosure relates to a blood pressure measuring apparatus for measuring a blood pressure of a subject using a cuff attached to the subject.

#### Background Art

[0002] Japanese Patent Publication No. 2002-078685A discloses what is called an inflation blood pressure measuring apparatus for determining a systolic blood pressure etc. of a subject while increasing the inner pressure of a cuff attached to the subject.

#### Summary of Invention

##### Technical Problem

[0003] Fig. 6A shows a common operation of the above type of inflation blood pressure measuring apparatus. In Fig. 6A, the dashed line represents the inner pressure of the cuff and the solid line represents the amplitude of a pulsation signal generated by a pressure sensor or the like. The amplitude of the pulsation signal corresponds to the magnitude of vibration that is caused by beating of an artery being pressed by the cuff. How the amplitude of the pulsation signal varies is monitored while the cuff pressure is being increased, and blood pressures (systolic blood pressure, diastolic blood pressure, etc.) are determined on the basis of magnitudes of amplitudes. Thus, to determine blood pressures correctly, it is necessary to detect a pulsation signal accurately.

[0004] An event may occur that, for example, the position of the cuff attached to a subject is deviated or the cuff becomes loose during inflation of the cuff. Fig. 6B shows how the inner pressure of the cuff and the pulsation signal vary over time in a case that such an event has occurred. If, for example, the cuff position is deviated or the cuff becomes loose, periodical noise is superimposed on the pulsation signal. In the interval that is circled in Fig. 6B, periodical noise due to deviation of the cuff position, cuff loosening, or the like is superimposed on the pulsation signal. Also being periodic, this noise is hard to discriminate from the intrinsic pulsation signal. This may cause a problem that blood pressures cannot be determined correctly because amplitudes of the intrinsic pulsation signal cannot be detected accurately.

[0005] An object of the present disclosure is to enable detection of an inappropriate attachment state of a cuff in order to avoid a situation that a blood pressure is measured with the cuff being in the inappropriate attachment state.

##### Solution to Problem

[0006] According to one aspect of the disclosure, there is provided a blood pressure

measuring apparatus for measuring a blood pressure of a subject using a cuff attached to the subject, comprising:

a processor; and

a memory configured to store instructions that is readable by the processor, wherein the blood pressure measuring apparatus is configured to, as the instructions are executed by the processor:

acquire pulsation information of the subject that is to be used to determine the blood pressure, while increasing an inner pressure of the cuff;

acquire first-order differential values of the pulsation information; and

detect an inappropriate attachment state of the cuff on the basis of at least one of:

a local minimal value of the first-order differential values;

a first variation of the first-order differential values including the local minimal value in a unit time;

a first relationship between a local maximal value and the local minimal value of the first-order differential values; and

a second relationship between the first variation and a second variation of the first-order differential values including the local maximal value in a unit time.

[0007] A pressure variation due to beating of an artery acts so as to increase the inner pressure of the cuff. This variation is reflected so as to increase the first-order differential value. On the other hand, noise due to positional deviation or loosening of the cuff acts so as to decrease the inner pressure of the cuff. This variation is reflected so as to decrease the first-order differential value. Thus, in the case where the cuff is not attached appropriately, the first-order differential values have a remarkable profile in an area of the local minimal value thereof than an area of the local maximal value thereof.

[0008] Accordingly, with the above configuration, an inappropriate attachment state of the cuff can be detected using the simple processing of differentiating once the pulsation information that is acquired in processing of inflating the cuff. A situation can thereby be avoided that a blood pressure is measured with the cuff being in an inappropriate attachment state.

[0009] According to one aspect of the disclosure, there is provided a blood pressure measuring apparatus for measuring a blood pressure of a subject using a cuff attached to the subject, comprising:

a processor; and

a memory configured to store instructions that is readable by the processor, wherein the blood pressure measuring apparatus is configured to, as the instructions are executed by the processor:

acquire pulsation information of the subject that is to be used to determine the blood

pressure, while increasing an inner pressure of the cuff;  
acquire second-order differential values of the pulsation information; and  
detect an inappropriate attachment state of the cuff on the basis of at least one of:  
a local minimal value of the second-order differential values;  
a first variation of the second-order differential values including the local minimal  
value in a unit time;  
a first relationship between a local maximal value and the local minimal value of the  
second-order differential values; and  
a second relationship between the first variation and a second variation of the second-  
order differential values including the local maximal value in a unit time.

[0010] Since features relating to an inappropriate attachment state of the cuff may be reflected in the second-order differential values more remarkably than the first-order differential values, the use of the second-order differential values makes it possible to detect the inappropriate attachment state of the cuff more correctly. Thus, it becomes possible to avoid more reliably a situation that a blood pressure is measured with the cuff being in an inappropriate attachment state.

### **Brief Description of Drawings**

[0011] [fig.1]Fig. 1 illustrates a functional configuration of a blood pressure measuring system according to one embodiment.

[fig.2]Fig. 2 illustrates an operation example of a blood pressure measuring apparatus shown in Fig. 1.

[fig.3A]Fig. 3A is a diagram for explaining operations of the blood pressure measuring apparatus shown in Fig. 1.

[fig.3B]Fig. 3B is a diagram for explaining operations of the blood pressure measuring apparatus shown in Fig. 1.

[fig.4]Fig. 4 is a diagram for explaining operations of the blood pressure measuring apparatus shown in Fig. 1.

[fig.5]Fig. 5 illustrates an operation example of a blood pressure measuring apparatus shown in Fig. 1.

[fig.6A]Fig. 6A illustrates an operation example of an inflation blood pressure measuring apparatus.

[fig.6B]Fig. 6B illustrates an operation example of an inflation blood pressure measuring apparatus.

### **Description of Embodiments**

[0012] Embodiments will be described below in detail with reference to the accompanying drawings. Fig. 1 shows a functional configuration of a blood pressure measuring system 1 according to one embodiment. The blood pressure measuring system 1

comprises a blood pressure measuring apparatus 2 and a cuff 3.

- [0013] The blood pressure measuring apparatus 2 is an apparatus for measuring a blood pressure of a subject 100 using the cuff 3 attached to the subject 100, and comprises an inflating mechanism 21, a controller 22, and a pulse acquiring section 23.
- [0014] The inflating mechanism 21, which is connected to the cuff 3 by a tube 31, has a pump function and a valve function. The pump function serves to increase the inner pressure of the cuff 3 by sending air to it through the tube 31. The valve function serves to connect or disconnect the tube 31 to or from the external air. The inner pressure of the cuff 3 lowers if the tube 31 is connected to the external air in a state that the pump function is not in operation.
- [0015] The controller 22 comprises processor 221 and a memory 222. As the processor 221, a CPU and an MPU can be exemplified. The processor 221 may include a plurality of cores. Examples of the memory 222 include a ROM and a RAM. The ROM may be stored with various computer-readable instructions. The processor 221 may designate at least a part of the instructions stored in the ROM that is to be executed on the RAM. The processor 221 may cooperate with the RAM in order to execute operations as described below in detail.
- [0016] The pulse acquiring section 23 is implemented by a sensor for acquiring pulsation information of the subject 100. The pulse acquiring section 23 is configured to output a pulsation signal P corresponding to beating of an artery of the subject 100. More specifically, the pulse acquiring section 23 generates a pulsation signal P by causing an output signal of a pressure sensor for detecting an inner pressure of the cuff 3 to pass through a highpass filter. Thus, it can be said that the pulsation signal P is a high-frequency signal indicating a temporal variation of the inner pressure of the cuff 3. The pulsation signal P that is output from the pulse acquiring section 23 is input to the controller 22.
- [0017] The blood pressure measuring apparatus 2 is configured to execute processing shown in Fig. 2 as instructions stored in the memory 222 are executed by the processor 221 in the controller 22.
- [0018] First, at step S1, the blood pressure measuring apparatus 2 activates the pump function of the inflating mechanism 21 and thereby increases the inner pressure of the cuff 3 at a prescribed inflation rate.
- [0019] At step S2, the blood pressure measuring apparatus 2 acquires a pulsation signal P of the subject 100 via the pulse acquiring section 23. The pulsation signal P is an example of pulsation information. Alternatively, acquisition of a pulse rate may be started before the inflating operation of the inflating mechanism 21.
- [0020] At step S3, the blood pressure measuring apparatus 2 generates a first-order differential signal PD1 by performing first-order differentiation on the pulsation signal P

acquired from the pulse acquiring section 23. That is, the controller 22 acquires first-order differential values of the pulsation information of the subject 100.

[0021] Fig. 3A shows waveforms of a pulsation signal P and a first-order differential signal PD1 in a case that the cuff 3 is attached appropriately. Fig. 3B shows waveforms of a pulsation signal P and a first-order differential signal PD1 in a case that the position of the cuff 3 is deviated or the cuff 3 is loose (i.e., the cuff 3 is not attached appropriately). In each of Figs. 3A and 3B, the horizontal chain line indicates the zero level of the first-order differential signal PD1.

[0022] A pressure variation due to beating of an artery acts so as to increase the inner pressure of the cuff 3. This variation is reflected in the first-order differential signal PD1 in such a direction as to increase its amplitude. On the other hand, noise due to positional deviation or loosening of the cuff 3 acts so as to decrease the inner pressure of the cuff 3. This variation is reflected in the first-order differential signal PD1 in such a direction as to decrease its amplitude. Thus, as shown in Fig. 3B, in the case where the cuff 3 is not attached appropriately, the first-order differential signal PD1 becomes such that a waveform element that is convex downward is dominant over or more remarkable than a waveform element that is convex upward.

[0023] At step S4 (see Fig. 2), the blood pressure measuring apparatus 2 judges whether the cuff 3 is attached appropriately on the basis of the above fact relating to the first-order differential signal PD1.

[0024] In a first example, the blood pressure measuring apparatus 2 makes a judgment on the basis of a bottom value PD1b of the first-order differential signal PD1 in a certain cycle (a prescribed period of the pulsation signal P). The bottom value PD1b is an example of a local minimal value of first-order differential values. More specifically, the blood pressure measuring apparatus 2 judges that the cuff 3 is not attached appropriately if a bottom value PD1b that appears immediately before a peak value PD1p in the first-order differential signal PD1 in a certain cycle is smaller than a prescribed value. An example of the prescribed value is a value that is smaller than the amplitude reference level R shown in Fig. 3 by 1 mmHg.

[0025] In a second example, the blood pressure measuring apparatus 2 makes a judgment on the basis of the sharpness of a waveform portion including a bottom value PD1b of the first-order differential signal PD1 in a certain cycle. More specifically, the blood pressure measuring apparatus 2 makes a judgment on the basis of an amplitude variation in a unit time containing a bottom value PD1b that appears immediately before a peak value PD1p in the first-order differential signal PD1 in a certain cycle. The amplitude variation in the unit time containing the bottom value PD1b is an example of a first variation.

[0026] As shown in Fig. 4, the first-order differential signal PD1 consists of plural first-

order differential values that respectively correspond to plural measured values constituting the pulsation signal P. Since the plural measured values are acquired at a fixed time interval, the plural measured values are also acquired at the fixed time interval. For example, the above-mentioned unit time may be defined as a time taken to acquire five first-order differential values that are the bottom value PD1b, two first-order differential values preceding the bottom value PD1b, and two first-order differential values following the bottom value PD1b. In this case, the above-mentioned “amplitude variation in the unit time containing the bottom value PD1b” can be defined as the sum of variations  $\delta b_1$  and  $\delta b_2$  shown in Fig. 4. The blood pressure measuring apparatus 2 judges that the cuff 3 is not attached appropriately if the sum of the variations  $\delta b_1$  and  $\delta b_2$  is larger than a prescribed value.

[0027] In a third example, the blood pressure measuring apparatus 2 makes a judgment on the basis of a relationship between a bottom value PD1b and a peak value PD1p of the first-order differential signal PD1 in a certain cycle. More specifically, the blood pressure measuring apparatus 2 judges that the cuff 3 is not attached appropriately if the absolute value of a bottom value PD1b that appears immediately before a peak value PD1p in the first-order differential signal PD1 in a certain cycle is larger than the absolute value of the peak value PD1p. The peak value PD1p is an example of a local maximal value of first-order differential values.

[0028] In a fourth example, the blood pressure measuring apparatus 2 makes a judgment on the basis of a relationship between the sharpness of a waveform portion including a bottom value PD1b of the first-order differential signal PD1 in a certain cycle and the sharpness of a waveform portion including a peak value PD1p of the first-order differential signal PD1 in the certain cycle. More specifically, the blood pressure measuring apparatus 2 judges that the cuff 3 is not attached appropriately if a waveform portion including a bottom value PD1b of the first-order differential signal PD1 in a certain cycle is sharper than a waveform portion including a peak value PD1p of the first-order differential signal PD1 in the certain cycle.

[0029] The method for determining the sharpness of a waveform portion including a bottom value PD1b is the same as described above. The sharpness of a waveform portion including a peak value PD1p may be determined as an amplitude variation of the first-order differential signal PD1 in a unit time containing the peak value PD1p. The amplitude variation in the unit time containing the peak value PD1p is an example of a second variation. The unit time may be defined as a time taken to acquire five first-order differential values that are the peak value PD1p, two first-order differential values preceding the peak value PD1p, and two first-order differential values following the peak value PD1p. In this case, the above-mentioned “amplitude variation in the unit time containing the peak value PD1p” can be defined as the sum of variations

delta-p1 and delta-p2 shown in Fig. 4. The blood pressure measuring apparatus 2 judges that the cuff 3 is not attached appropriately if the sum of the variations delta-b1 and delta-b2 is larger than the sum of the variations delta-p1 and delta-p2.

[0030] The blood pressure measuring apparatus 2 may employ either only one or plural ones of the above four judgment criteria. In the latter case, the blood pressure measuring apparatus 2 may judge that the cuff 3 is not attached appropriately if at least one of the criteria employed is satisfied.

[0031] As shown in Fig. 2, if judging that the cuff 3 is attached appropriately (S4: Y), at step S5 the blood pressure measuring apparatus 2 determines a blood pressure of the subject 100 on the basis of the pulsation signal P.

[0032] On the other hand, if judging that the cuff 3 is not attached appropriately (S4: N), at step S6 the blood pressure measuring apparatus 2 notifies the fact with at least one of a visual notification, an auditory notification, and a tactile notification.

[0033] With the above configuration, an inappropriate attachment state of the cuff 3 can be detected using the simple processing of differentiating once a pulsation signal P that is acquired in processing of inflating the cuff 3. A situation can thereby be avoided that a blood pressure is measured with the cuff 3 being in an inappropriate attachment state.

[0034] Determination itself of a blood pressure may be done at step S5 parallel with the notification. In this case, a judgment as to whether a determined blood pressure is appropriate is left to a health care professional who should also take the notification into consideration.

[0035] Alternatively, the blood pressure measuring apparatus 2 may be configured to refrain from determining a blood pressure on the basis of the pulsation signal P if that a prescribed criterion is satisfied in making the above judgment, the prescribed criterion (the satisfaction of which means a high probability of inappropriate attachment of the cuff 3) being at least one of the following requirements 1 and 2:

Requirement 1: The ratio of the absolute value of a bottom value PD1b that appears immediately before a peak value PD1p in the first-order differential signal PD1 in a certain cycle to the absolute value of the peak value PD1p is larger than or equal to a prescribed ratio. For example, the prescribed ratio is 1.5. This requirement is an example of a first relationship.

Requirement 2: The ratio of an amplitude variation indicating the sharpness of a waveform portion including a bottom value PD1b that appears immediately before a peak value PD1p in the first-order differential signal PD1 in a certain cycle to an amplitude variation indicating the sharpness of a waveform portion including the peak value PD1p is larger than or equal to a first prescribed ratio and the ratio of the absolute value of the bottom value PD1b to that of the peak value PD1p is larger than or equal to a second prescribed ratio. For example, the first prescribed ratio is 2 and the

- second prescribed ratio is 0.5. This requirement is an example of a second relationship.
- [0036] With the above configuration, it is made easier to avoid a situation that a blood pressure is measured with the cuff 3 being in an inappropriate attachment state.
- [0037] In each of the above examples of the processing of judging whether the cuff 3 is in an inappropriate attachment state, a judgment is made on the basis of a peak value PD1p and a bottom value PD1b of the first-order differential signal PD1 of the pulsation signal P in a certain cycle as well as amplitude variations of the first-order differential signal PD1 including the peak value PD1p and the bottom value PD1b. Each of the peak value PD1p and the bottom value PD1b may be an average of plural values acquired in a prescribed time period (a time period corresponding to five pulsations of the subject 100, for example).
- [0038] With the above configuration, it is possible to increase the correctness, in a statistical sense, of the processing of judging whether the cuff 3 is in an inappropriate attachment state. That is, it becomes easier to avoid a situation that the cuff 3 is judged in an inappropriate attachment state as a result of an event that the above parameters of the first-order differential signal PD1 satisfy the criterion by chance. Thus, it becomes easier to avoid a situation that a blood pressure is measured with the cuff 3 being in an inappropriate attachment state.
- [0039] Figs. 3A and 3B also show a waveform of a second-order differential signal PD2 of the pulsation signal P. In each of Figs. 3A and 3B, the horizontal reference level R also coincides with the zero level of the second-order differential signal PD2. It is found from comparison between the first-order differential signal PD1 and the second-order differential signal PD2 that the second-order differential signal PD2 exhibits, in a more emphasized manner, the tendency that a waveform element that is convex downward is more remarkable in the case that the cuff 3 is not attached appropriately. It is also found that the second-order differential signal PD2 exhibits, in a more emphasized manner, the tendency that a maximum value is reached earlier in the case that the cuff 3 is not attached appropriately. It is noted that a case having only one of these two tendencies may occur.
- [0040] Based on the above discussion, the blood pressure measuring apparatus 2 may acquire a second-order differential signal PD2 in addition to or in place of a first-order differential signal PD1 by differentiating the pulsation signal P twice. The second-order differential signal PD2 is an example of the second-order differential values of the pulsation information. A criterion for judging whether the cuff 3 is in an inappropriate attachment state may be such as to correspond to at least one of the above-mentioned four criteria.
- [0041] The blood pressure measuring apparatus 2 may be configured to execute the judgment step using the second-order differential signal PD2 if it is judged that the

judgment as to whether the cuff 3 is in an inappropriate attachment state cannot be made properly as long as only the first-order differential signal PD1 is used. Alternatively, the process may always proceed to acquisition of a second-order differential signal PD2 and judgment using the acquired second-order differential signal PD2.

- [0042] Fig. 5 is a flowchart of such processing of the blood pressure measuring apparatus 2. Steps that are substantially the same as those in the processing of Fig. 2 are designated with the same reference symbols as the latter. Step S13 is a step of acquiring a second-order differential signal PD2. Alternatively, the processing may always proceed to acquisition of a second-order differential signal PD2 and comparison between a result of a judgment using the first-order differential signal PD1 and a result of a judgment using the second-order differential signal PD2.
- [0043] Since features relating to an inappropriate attachment state of the cuff 3 may be reflected in the second-order differential signal PD2 more remarkably than the first-order differential signal PD1, the use of the second-order differential signal PD2 makes it possible to detect an inappropriate attachment state of the cuff 3 more correctly. Thus, it becomes possible to avoid more reliably a situation that a blood pressure is measured with the cuff 3 being in an inappropriate attachment state.
- [0044] The above-described embodiment is just an example for facilitating understanding of the present disclosure, and the configuration of the embodiment can be modified or improved as appropriate without departing from the fundamental concept of the present disclosure.
- [0045] The inflating mechanism 21 and the controller 22 of the blood pressure measuring apparatus 2 need not always be disposed in a common casing. At least part of the functions of the controller 22 may be implemented by a computing device of a computer that is connected to the blood pressure measuring apparatus 2.
- [0046] The pulse acquiring section 23 need not always be disposed in the blood pressure measuring apparatus 2, and may be configured to be attachable to the body of a subject.
- [0047] The present application is based on Japanese Patent Application No. 2017-065003 filed on March 29, 2017, the entire contents of which are hereby incorporated by reference.

## Claims

- [Claim 1] A blood pressure measuring apparatus for measuring a blood pressure of a subject using a cuff attached to the subject, comprising:  
a processor; and  
a memory configured to store instructions that is readable by the processor,  
wherein the blood pressure measuring apparatus is configured to, as the instructions are executed by the processor:  
acquire pulsation information of the subject that is to be used to determine the blood pressure, while increasing an inner pressure of the cuff;  
acquire first-order differential values of the pulsation information; and  
detect an inappropriate attachment state of the cuff on the basis of at least one of:  
a local minimal value of the first-order differential values;  
a first variation of the first-order differential values including the local minimal value in a unit time;  
a first relationship between a local maximal value and the local minimal value of the first-order differential values; and  
a second relationship between the first variation and a second variation of the first-order differential values including the local maximal value in a unit time.
- [Claim 2] The blood pressure measuring apparatus according to claim 1,  
wherein the blood pressure is not determined if at least one of the first relationship and the second relationship is satisfied.
- [Claim 3] The blood pressure measuring apparatus according to claim 1 or 2,  
wherein at least one of the local minimal value, the first variation, the local maximal value, and the second variation is calculated as a mean value of plural values acquired in a prescribed time period.
- [Claim 4] A blood pressure measuring apparatus for measuring a blood pressure of a subject using a cuff attached to the subject, comprising:  
a processor; and  
a memory configured to store instructions that is readable by the processor,  
wherein the blood pressure measuring apparatus is configured to, as the instructions are executed by the processor:  
acquire pulsation information of the subject that is to be used to

determine the blood pressure, while increasing an inner pressure of the cuff;

acquire second-order differential values of the pulsation information;  
and

detect an inappropriate attachment state of the cuff on the basis of at least one of:

a local minimal value of the second-order differential values;

a first variation of the second-order differential values including the local minimal value in a unit time;

a first relationship between a local maximal value and the local minimal value of the second-order differential values; and

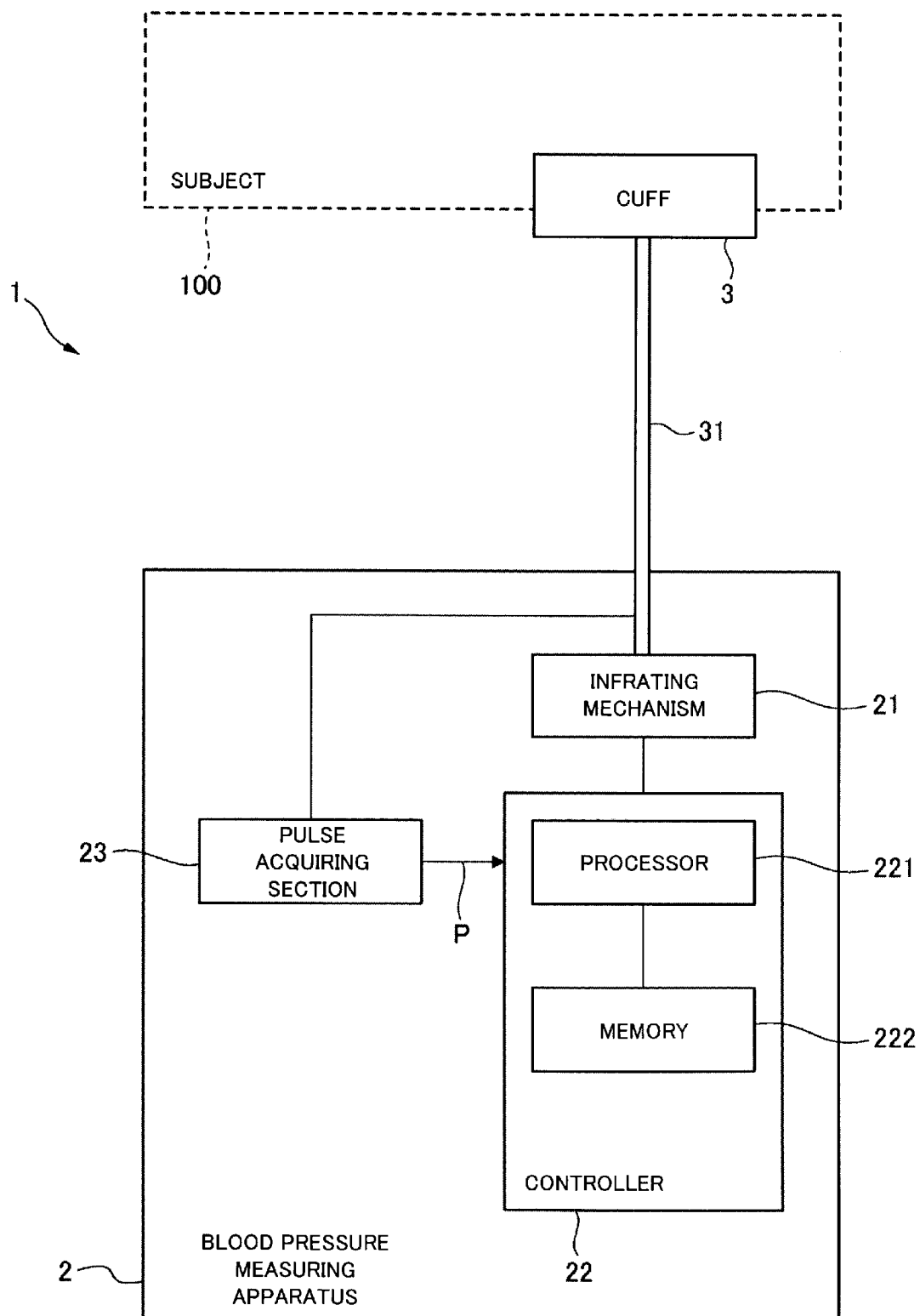
a second relationship between the first variation and a second variation of the second-order differential values including the local maximal value in a unit time.

[Claim 5] The blood pressure measuring apparatus according to claim 4, wherein the blood pressure is not determined if at least one of the first relationship and the second relationship is satisfied.

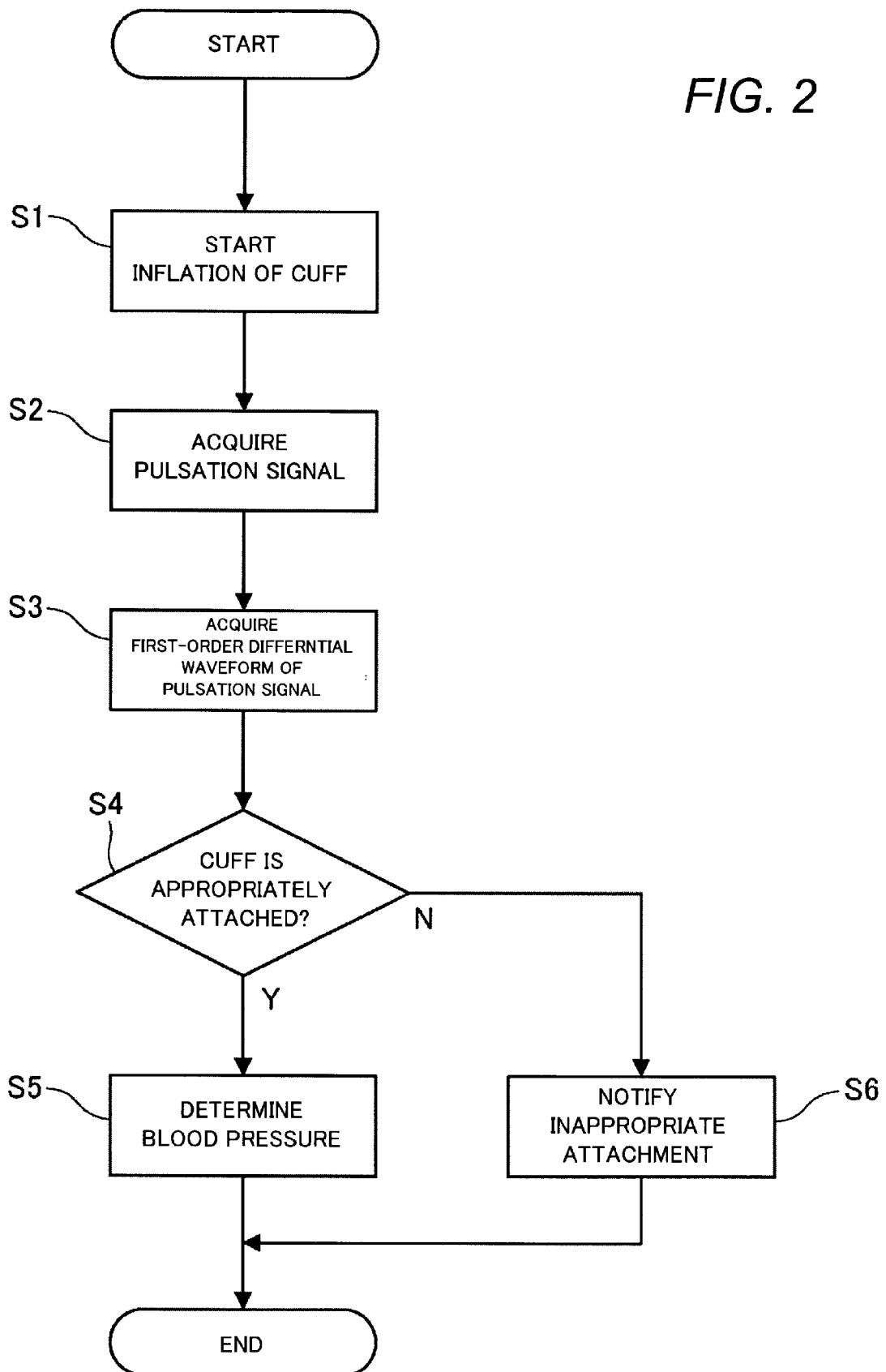
[Claim 6] The blood pressure measuring apparatus according to claim 4 or 5, wherein at least one of the local minimal value, the first variation, the local maximal value, and the second variation is calculated as a mean value of plural values acquired in a prescribed time period.

[Fig. 1]

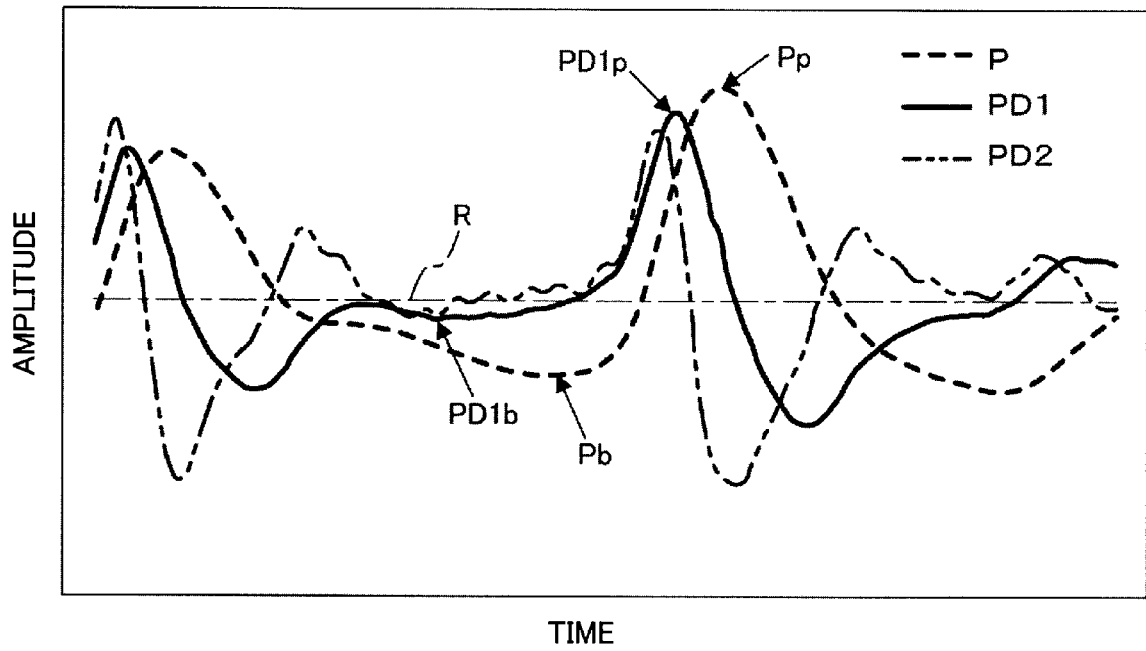
FIG. 1



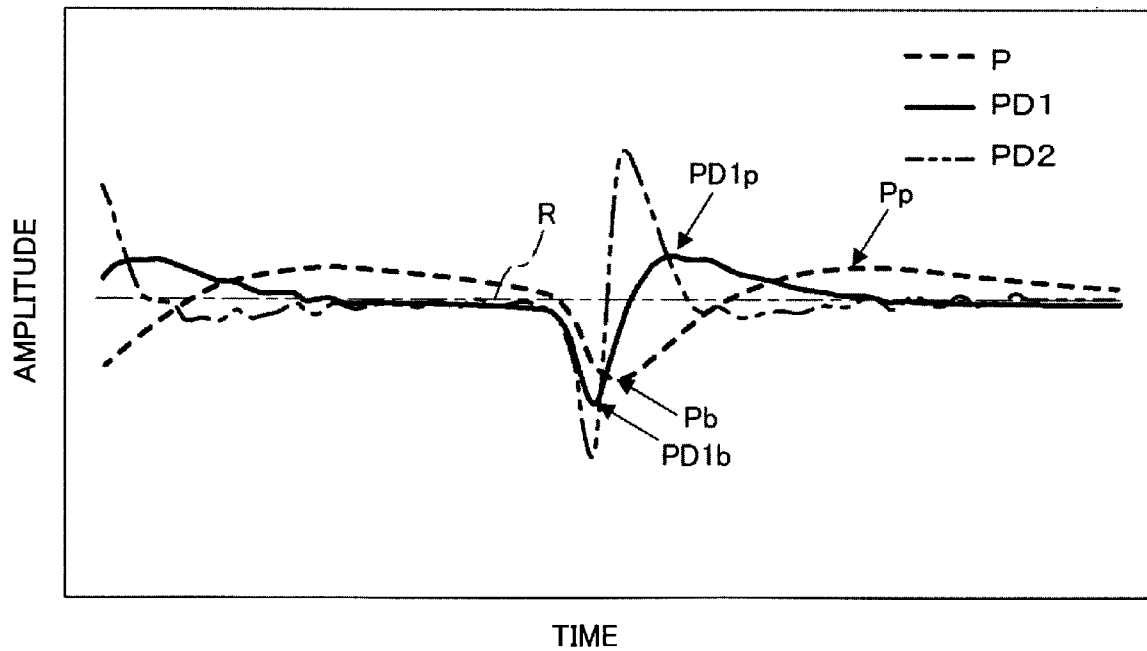
[Fig. 2]



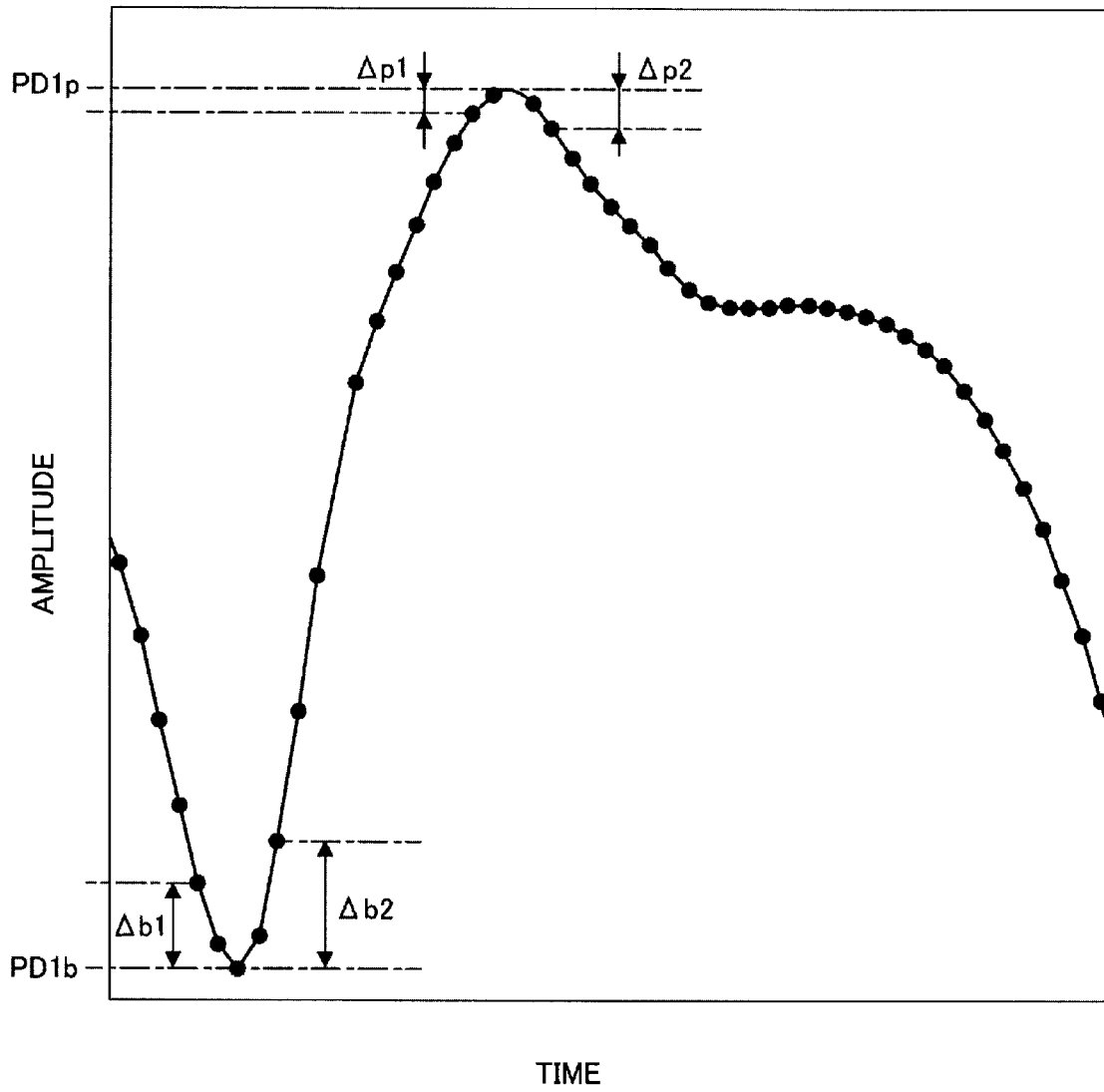
[Fig. 3A]

**FIG. 3A**

[Fig. 3B]

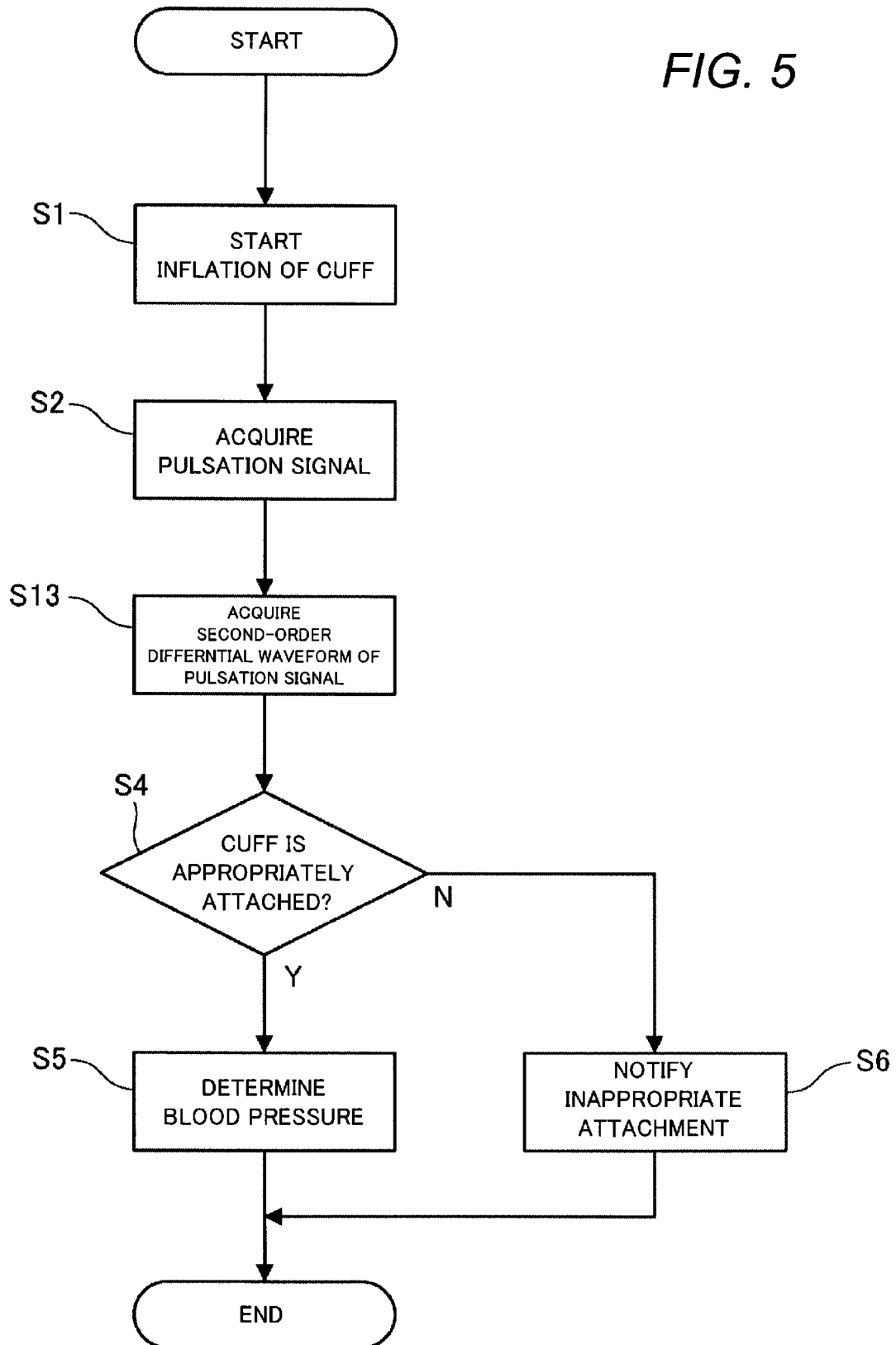
**FIG. 3B**

[Fig. 4]

**FIG. 4**

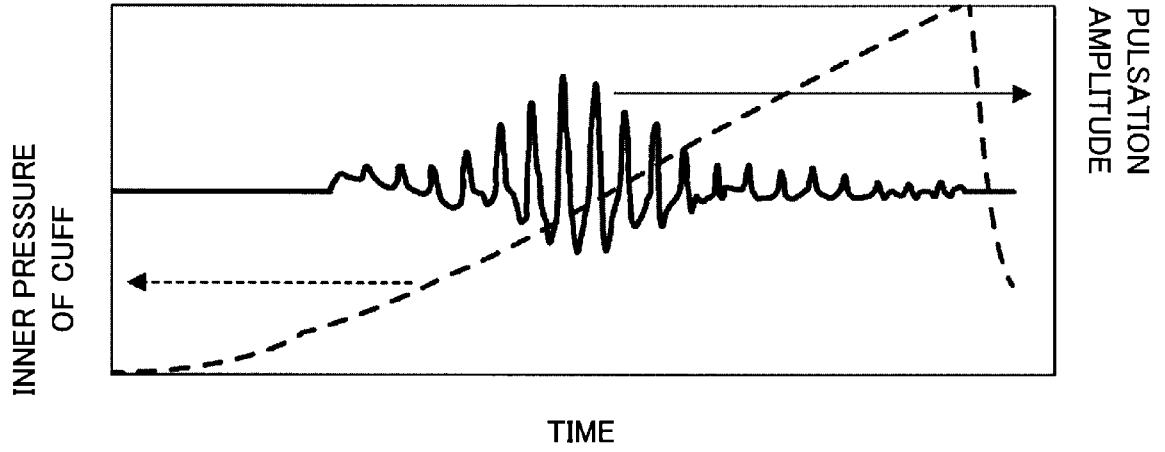
[Fig. 5]

FIG. 5



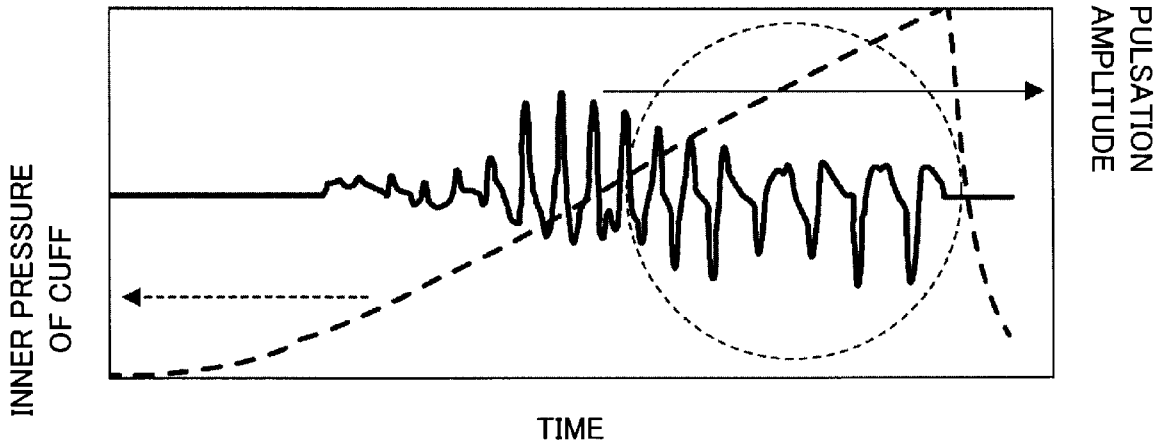
[Fig. 6A]

**FIG. 6A**



[Fig. 6B]

**FIG. 6B**



INTERNATIONAL SEARCH REPORT

International application No  
PCT/JP2018/011062

A. CLASSIFICATION OF SUBJECT MATTER  
INV. A61B5/00 A61B5/022  
ADD.  
According to International Patent Classification (IPC) or to both national classification and IPC

B. FIELDS SEARCHED  
Minimum documentation searched (classification system followed by classification symbols)  
A61B

Documentation searched other than minimum documentation to the extent that such documents are included in the fields searched

Electronic data base consulted during the international search (name of data base and, where practicable, search terms used)  
EPO-Internal, WPI Data

C. DOCUMENTS CONSIDERED TO BE RELEVANT

Category*	Citation of document, with indication, where appropriate, of the relevant passages	Relevant to claim No.
A	EP 2 572 633 A2 (UP MED GMBH [DE]) 27 March 2013 (2013-03-27) paragraphs [0001], [0033] - [0036], [0102] - [0104] -----	1-6
A	US 2011/054330 A1 (PFEIFFER ULRICH [DE] ET AL) 3 March 2011 (2011-03-03) paragraphs [0064], [0065], [0075], [0084] -----	1-6
A	WO 2014/124086 A1 (ELWHA LLC [US]) 14 August 2014 (2014-08-14) page 5, line 22 - page 6, line 3 -----	1-6
A	US 2016/278645 A1 (YOON YOUNGZOOM [KR]) 29 September 2016 (2016-09-29) paragraphs [0010] - [0012], [0045], [0068] -----	1-6
	-/--	

Further documents are listed in the continuation of Box C.

See patent family annex.

\* Special categories of cited documents :

- "A" document defining the general state of the art which is not considered to be of particular relevance
- "E" earlier application or patent but published on or after the international filing date
- "L" document which may throw doubts on priority claim(s) or which is cited to establish the publication date of another citation or other special reason (as specified)
- "O" document referring to an oral disclosure, use, exhibition or other means
- "P" document published prior to the international filing date but later than the priority date claimed

"T" later document published after the international filing date or priority date and not in conflict with the application but cited to understand the principle or theory underlying the invention

"X" document of particular relevance; the claimed invention cannot be considered novel or cannot be considered to involve an inventive step when the document is taken alone

"Y" document of particular relevance; the claimed invention cannot be considered to involve an inventive step when the document is combined with one or more other such documents, such combination being obvious to a person skilled in the art

"&" document member of the same patent family

Date of the actual completion of the international search  24 May 2018	Date of mailing of the international search report  07/06/2018
--	--

Name and mailing address of the ISA/ European Patent Office, P.B. 5818 Patentlaan 2 NL - 2280 HV Rijswijk Tel. (+31-70) 340-2040, Fax: (+31-70) 340-3016	Authorized officer  Pohjamo, Terhi
--	--

# INTERNATIONAL SEARCH REPORT

International application No  
PCT/JP2018/011062

C(Continuation). DOCUMENTS CONSIDERED TO BE RELEVANT		
Category*	Citation of document, with indication, where appropriate, of the relevant passages	Relevant to claim No.
A	US 2005/283086 A1 (SATO HIRONORI [JP] ET AL) 22 December 2005 (2005-12-22) paragraphs [0004] - [0012] -----	1-6

# INTERNATIONAL SEARCH REPORT

Information on patent family members

International application No PCT/JP2018/011062
---

Patent document cited in search report	Publication date	Patent family member(s)	Publication date
EP 2572633	A2	27-03-2013	CN 102481105 A 30-05-2012
			DE 102009039257 A1 10-03-2011
			EP 2348972 A2 03-08-2011
			EP 2572633 A2 27-03-2013
			ES 2400443 T3 09-04-2013
			JP 2013502940 A 31-01-2013
			WO 2011023343 A2 03-03-2011
-----			
US 2011054330	A1	03-03-2011	NONE
-----			
WO 2014124086	A1	14-08-2014	US 2013245390 A1 19-09-2013
			US 2013245391 A1 19-09-2013
			WO 2014124086 A1 14-08-2014
-----			
US 2016278645	A1	29-09-2016	KR 20160115017 A 06-10-2016
			US 2016278645 A1 29-09-2016
-----			
US 2005283086	A1	22-12-2005	JP 4581496 B2 17-11-2010
			JP 2005349116 A 22-12-2005
			US 2005283086 A1 22-12-2005
-----			

专利名称(译)	血压测量装置		
公开(公告)号	<a href="#">EP3600003A1</a>	公开(公告)日	2020-02-05
申请号	EP2018716372	申请日	2018-03-20
[标]申请(专利权)人(译)	日本光电工业株式会社		
申请(专利权)人(译)	日本光电公司		
当前申请(专利权)人(译)	日本光电公司		
[标]发明人	KIKUCHI YOSHIHARU		
发明人	KIKUCHI YOSHIHARU		
IPC分类号	A61B5/00 A61B5/022		
CPC分类号	A61B5/02225 A61B5/6843 A61B5/7221 A61B5/7239 A61B5/022		
优先权	2017065003 2017-03-29 JP		
外部链接	<a href="#">Espacenet</a>		

#### 摘要(译)

用于使用附接到对象的袖带来测量对象的血压的血压测量设备包括处理器和用于存储可由处理器读取的指令的存储器。当指令由处理器执行时，该装置在增加袖带的内部压力的同时产生对象的搏动信号。通过微分脉动信号产生一阶差分信号。然后，该装置基于以下至少之一来检测袖带的不合适的附接状态：一阶差分信号的谷值；以及一阶差分信号的峰值和谷值之间的关系；单位时间内包含谷值的一阶差分信号的振幅量；单位时间内包含峰值的一阶差分信号的振幅量与振幅量之间的关系。