



(11) **EP 3 238 612 A1**

(12) **EUROPEAN PATENT APPLICATION**

(43) Date of publication:
01.11.2017 Bulletin 2017/44

(51) Int Cl.:
A61B 5/00 (2006.01) A61B 5/11 (2006.01)

(21) Application number: **17165479.1**

(22) Date of filing: **07.04.2017**

(84) Designated Contracting States:
AL AT BE BG CH CY CZ DE DK EE ES FI FR GB GR HR HU IE IS IT LI LT LU LV MC MK MT NL NO PL PT RO RS SE SI SK SM TR
Designated Extension States:
BA ME
Designated Validation States:
MA MD

(72) Inventors:
• **SUNDAR, Naga**
Morris Plains, NJ 07950 (US)
• **PONRAMAN, Jenifram**
Morris Plains, NJ 07950 (US)
• **AZHAGESAN, Muthukumar**
Morris Plains, NJ 07950 (US)

(30) Priority: **19.04.2016 US 201615133014**

(74) Representative: **Houghton, Mark Phillip**
Patent Outsourcing Limited
1 King Street
Bakewell, Derbyshire DE45 1DZ (GB)

(71) Applicant: **Honeywell International Inc.**
Morris Plains, NJ 07950 (US)

(54) **SYSTEM AND APPROACH FOR INTEGRATION OF PARAMETERS FROM WEARABLE CLOUD CONNECTED ACCESS CONTROL DEVICES**

(57) A system and approach for integrating of health parameters from wearable cloud connected access control devices to provide life safety measures, and also for controlling access to facilities. A monitoring system may incorporate a device for a wearer or holder and a sensor at an entrance to or exit from a specified facility, and a processor connected to the sensor. The device may sense a parameter of the wearer or holder selected from

a group of items incorporating heartbeat, blood pressure, blood oxygen, pulse rate, and body temperature. If the selected parameter indicates an abnormal or worsening condition, then the wearer or holder may obtain access to a hospital or health care facility. Health professionals may hold or wear a device that permits them to enter a restricted facility to aid a person within the facility needing medical assistance.

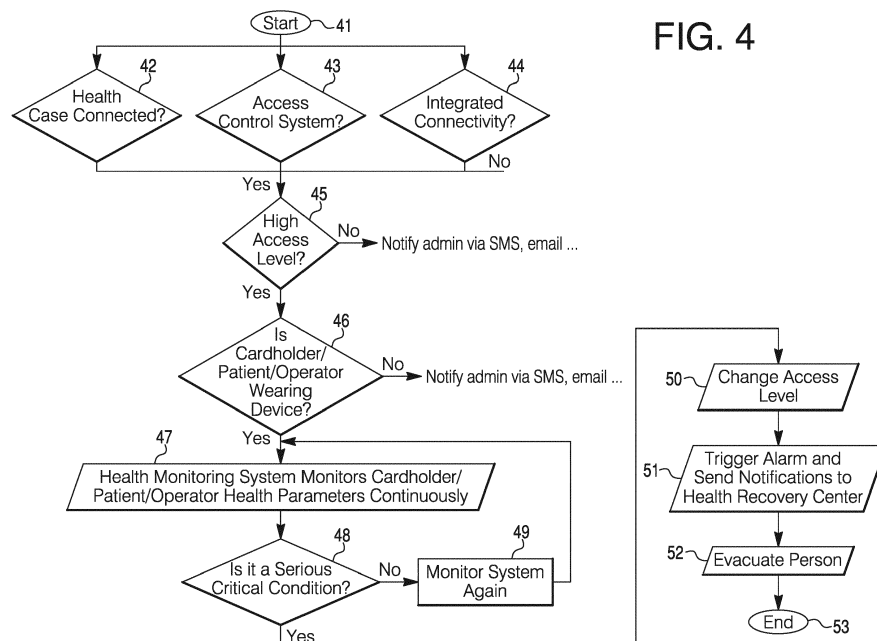


FIG. 4

EP 3 238 612 A1

Description

Background

[0001] The present disclosure pertains to health monitors and particularly to health alert systems.

Summary

[0002] The disclosure reveals an illustrative example of a system and approach for integrating of health parameters from wearable cloud connected access control devices to provide life safety measures, and also for controlling access to facilities. A monitoring system may incorporate a device for a wearer or holder and a sensor at an entrance to or exit from a specified facility, and a processor connected to the sensor. The wearer or holder with the device may enter or leave the specified facility. The sensor may read the device if the device is within a predetermined distance from the sensor. Signals from the sensor read from the device may go to the processor which determines from the signals whether the wearer or holder is allowed to enter or leave the specified facility. If the wearer or holder with the device is leaving the facility, a message from an indicator or speaker at the sensor location may remind the wearer or holder that a particular action should be performed within the facility prior to a departure. If the wearer or holder with the card attempts to enter the facility, the wearer or holder may enter the facility if the sensor reads certain signals from the card. The device may sense a parameter of the wearer or holder selected from a group of items incorporating heartbeat, blood pressure, blood oxygen, pulse rate, and body temperature. If the selected parameter indicates an abnormal condition of the wearer or holder, the wearer or holder may obtain access to a hospital or health care facility. The device may make an internet connection and transmit signals to the processor at the specified facility. The wearer or holder may monitor the parameter from the device. The parameter may be monitored from a special website designed for monitoring the parameter and health situations related to the parameter. A panel may receive the parameter from the device. If the parameter worsens, then the panel may automatically trigger an alarm to an administrator so that the administrator knows that the wearer or holder needs help, or an access level is modified for entrance of the wearer or holder to a hospital or health facility. Health professionals may hold or wear a device that permits them to enter a restricted facility to aid a person within the facility needing medical assistance.

Brief Description of the Drawing

[0003]

Figure 1 is a diagram of a health monitoring system layout;

Figure 2 is a diagram of a health monitoring and alerting scheme for a hospital or a health clinic;

Figure 3 is a diagram of a health monitoring and alert system layout for a nuclear power plant or like facility; and

Figure 4 is a diagram for an integration of health parameters from wearable cloud connected monitor and access control devices to provide improved life safety services.

Description

[0004] The present system and approach may incorporate one or more processors, computers, controllers, user interfaces, wireless and/or wire connections, and/or the like, in an implementation described and/or shown herein.

[0005] This description may provide one or more illustrative and specific examples or ways of implementing the present system and approach. There may be numerous other examples or ways of implementing the system and approach.

[0006] A high level of secured areas like nuclear power plants, building monitoring room, control room, ICU room in a hospital where only restricted and high secure access level may be provided to, for example, card holders or item or device wearers. In a hospital intensive care unit scenario, very few people such as a doctor and nurses may be allowed to enter a room. In nuclear power plants, scientists and high profile security personnel may be allowed and also a few monitoring stations, with very few operators may be allowed. If there is any medical emergency support required for people inside the premises, they should raise an alarm and only those people who are having access to the room may enter the premises and save the people.

[0007] An emergency notification system should trigger manually in the scenarios which have been integrated with access control panels, so that notification and counter action for the notification may be taken. Sometimes, a victim card holder will not necessarily be in a position to trigger an alarm because of a critical emergency health condition. In this scenario, nobody will necessarily be there to help and save the victim card holder. This scenario may lead to life threatening situations to the card holder.

[0008] In a present technology evolution the aforesaid issue may be solved by cloud deployment with an integration of wearable and internet of things (IOT) of access and security devices. The critical card holder may have to wear the wearable item which can keep on track the health parameters like blood pressure, heart beat and other parameters based on the site deployment.

[0009] In a case of a hospital, a patient's different magnitudes of a health parameter may be sent to connected access devices. If any critical emergency occurs, the system should take a decision based on configure rules, something like changing the access levels so that the

doors for aid can be accessed easily.

[0010] In case of a building monitoring station, the card holder having a questionable health parameter may be sent to connected access devices. If any critical emergency occurs, the system may make a decision based on a configured rule, something like changing the access levels so that, the doors for aid can be accessed easily. Also the system may alert any connected communication devices to arrange a recovery process from a hospital.

[0011] In a case of building nuclear stations, an employee's or scientist's health parameter may be sent to connected access devices. If any critical emergency occurs, the system may make a decision based on the configured rule, something like changing the access levels so that, the doors for aid can be accessed easily. Also the system may alert any connected communication devices to arrange a recovery process with or from a hospital. The system may also initiate a sequence of actions based on the configured rule.

[0012] Wearable health monitoring devices may provide health parameters like heartbeat, blood pressure, pulse rate, and so on, and be connected to the web in various ways. Some devices may enable wearers to monitor their own body parameter readings using a mobile phone and a special website designed for monitoring parameters and health situations.

[0013] A panel may store data of each card holder and every time there is a change in the condition of the card holder, the data may be refreshed. The panel may receive heart beat rate, blood pressure from wearable health monitor devices as digital data periodically. If any one of the card holder conditions worsens (e.g., heartbeat goes below the "normal" rate), the panel may automatically trigger an alarm, so the administrator knows that the cardholder, such as an employee, needs help and that an access level can be modified accordingly for safer evacuation of the card holder to a hospital.

[0014] Figure 1 is a diagram of a health monitoring system layout. A card holder 11 may send information, such as health parameters like heart beat, blood pressure, breathing rate, oxygen content in blood, and so forth, to a connected access and internet of things (IOT) devices at symbol 12. Information from items of symbol 12 may go to symbol 13 for emergency alert and activation as needed. Such emergency alert and activation may result in actions, some of which are listed in symbol 14. They may incorporate change of access level for easy recovery, trigger alarms, and notification sent to a health recovery center.

[0015] Figure 2 is a diagram of a hospital or a health clinic layout. A patient and/or cardholder 16 may send information, such as health parameters like heart beat, blood pressure, breathing rate, oxygen content in blood, and so forth, to a connected access and IOT devices 17. Information from items indicated by symbol 17 may go to a symbol 18 for emergency alert and activation as needed. Such emergency alert and activation may result in actions, some of which are listed in symbol 19. The

actions may incorporate change of access level of intensive care unit (ICU) room for easy recovery, trigger alarm, and send a notification to a doctor, relatives and a relevant representative.

[0016] Figure 3 is a diagram of a health monitoring and alert system layout for a nuclear power plant or like facility. A card holder 21 may send information, such as health parameters like heartbeat, blood pressure, breathing rate, oxygen content in blood, and so forth, to a connected access and IOT devices at symbol 22. Information from items indicated by symbol 22 may go to a symbol 23 for emergency alert and activation as needed. Such emergency alert and activation may result in action, some of which are listed in symbol 24. The actions may incorporate send sequences of notifications to different systems and change access level for card holder recovery.

[0017] Figure 4 is a flow diagram for an integration of health parameters from wearable cloud connected monitor and access control devices to provide improved life safety services. From a start 41, questions of whether a situation is health case connected, whether there is an access control system, and whether there is integrated connectivity may be asked at symbols 42, 43 and 44, respectively. If an answer is yes to any one or more of the questions, then a question of whether there is a high access level may be asked at symbol 45. If the answer is no for all of the questions at symbols 42-44, then an administration may be notified via SMS, email, or the like. If the answer is yes, then a question at symbol 46 may be asked as to whether a cardholder, patient, operator or other person to be monitored, is wearing a monitoring device. If an answer is no, then the administration may be notified via SMS, email, or the like. If the answer is yes, the a health monitoring system may monitor the cardholder, patient, operator or other person, relative to health parameters continuously at symbol 47. A question of whether there is a serious/critical condition may be asked at symbol 48. If an answer is no, then the system may be monitored again as indicated at symbol 49, where a return is made to symbol 47. If the answer is yes at symbol 48, then an access level may be changed as indicated at symbol 50. An alarm may be triggered and one or more notifications may be sent to a health recovery center as indicated at symbol 51. A person with the serious or critical condition may be evacuated to a health facility for care according to symbol 52, and an end of the present flow of activity may be occur at symbol 53.

[0018] To recap, a monitoring system may incorporate a device for a holder, a sensor that detects information on the device at an entrance to or exit from a specified facility having limited access, and a processor connected to the sensor. Detected information on the device may permit the holder to enter or leave the specified facility. The sensor may read the device if the device is within a predetermined distance from the sensor. Signals from the sensor read from the device may go to the processor which determines from the signals whether the device holder is allowed to enter or leave the specified facility.

The device may monitor one or more health parameters of the holder.

[0019] The device may sense a parameter of the holder selected from a group incorporating heartbeat, blood pressure, blood oxygen, pulse rate, and body temperature. If the selected parameter indicates an abnormal condition of the holder, the holder may obtain access to a health care facility.

[0020] The device may make an internet connection and transmit signals to the processor at the specified facility.

[0021] The holder may monitor the parameter from the device.

[0022] The parameter may be monitored from a special website designed for monitoring the parameter and health situations related to the parameter.

[0023] A panel may receive the parameter from the device. If the parameter worsens, then the panel may automatically trigger an alarm to a health administrator so that the health administrator knows that the holder needs help, or an access level is modified for entrance of the holder to a hospital.

[0024] If the holder with the device is leaving the facility, a message from a speaker or indicator at the sensor location may remind the holder that a particular action should be performed within the facility prior to a departure.

[0025] If the device holder with the device attempts to enter the facility, the holder may enter the facility only if the sensor reads certain signals from the device.

[0026] An approach for health monitoring, may incorporate sensing one or more health parameters with a card about a person holding a card, sending the one or more health parameters from the card to one or more IOT (internet of things) devices, evaluating the one or more health parameters with the one or more IOT devices, and initiating an emergency alert and activation as necessary in response to the evaluating of the one or more health parameters.

[0027] The approach may further incorporate sending sequences of notifications to various health recovery facilities, and changing an access level as needed for entry, by the person holding the card, to a health recovery facility.

[0028] The approach may further incorporate triggering an alarm relative to the emergency alert, changing an access level of the person holding the card as necessary for entry to a health recovery facility, sending a notification to the health recovery facility, and sending a notification to a doctor, representatives, relatives and other entities of the person.

[0029] The approach may further incorporate sending sequences of notifications to various sections of a non-medical facility, and setting an access level needed for entry to a health recovery facility inside or outside of the non-medical facility.

[0030] The approach may further incorporate setting access levels for medical personal to enable them to en-

ter a non-medical facility to assist in health recovery of the person holding the card.

[0031] The approach may further incorporate basing the evaluating the one or more health parameters with the one or more IOT devices on a configuration rule.

[0032] An access control mechanism may incorporate a wearable item, a first internet interface connected to the wearable item, a cloud, and a second internet interface connected to an access control panel at one or more facilities and the cloud. The wearable item may be on a person. The wearable item may provide information about the person to the cloud via the first internet interface. The one or more facilities may obtain the information about the person from the cloud via the second internet interface.

[0033] The access control panel may determine an access level for the person to the one or more facilities based at least in part on the information about the person.

[0034] A first access level may be the highest level for access to the one or more facilities. A third access level may be the lowest level for access to the one or more facilities. A second access level may be between the lowest level and the highest level for access to the one or more facilities. At least one of the one or more facilities may be a medical facility. An access level for a medical person assigned to the medical facility may be at a first access level. The access level for a person that has a health condition determined by one or more abnormal readings of parameters sensed by the wearable item on the person, may be changed from a third access level to a second access level.

[0035] If the access level for the person is changed to the second access level, then one or more persons or agencies for notification may be selected from a group incorporating nearest of kin, ambulance service, supervisor of the person, and medical services.

[0036] Decisions may be based on a configured rule that considers items of information about the person selected from a group consisting of levels of access, parameters sensed by the wearable item, destinations for aid, recovery processes, urgency of care needed, and evacuation.

[0037] At least one of the one or more facilities may be selected from a group incorporating high security facilities, facilities holding valuable items, dangerous facilities, and monitoring facilities. The access level of a person that is assigned to the high security facility may be at the first access level. The access level for a person that is not authorized to be at the facility may be the third access level. The access level for a person that is guest at the facility may be a second access level. The second access level may be between the first access level and the third access level. The second access level may be changed for a person in view of new information about the person or the facility.

[0038] Information from the wearable item may indicate, at least in part, what access level that the person with the wearable item is granted.

[0039] Any publication or patent document noted herein is hereby incorporated by reference to the same extent as if each publication or patent document was specifically and individually indicated to be incorporated by reference.

[0040] In the present specification, some of the matter may be of a hypothetical or prophetic nature although stated in another manner or tense.

[0041] Although the present system and/or approach has been described with respect to at least one illustrative example, many variations and modifications will become apparent to those skilled in the art upon reading the specification. It is therefore the intention that the appended claims be interpreted as broadly as possible in view of the related art to include all such variations and modifications.

Claims

1. A monitoring system comprising:

- a device for a holder;
- a sensor that detects information on the device at an entrance to or exit from a specified facility having limited access; and
- a processor connected to the sensor; and

wherein:

detected information on the device permits the holder to enter or leave the specified facility; the sensor reads the device if the device is within a predetermined distance from the sensor; signals from the sensor read from the device go to the processor which determines from the signals whether the device holder is allowed to enter or leave the specified facility; and the device monitors one or more health parameters of the holder.

2. The system of claim 1, wherein:

- the device senses a parameter of the holder selected from a group comprising heartbeat, blood pressure, blood oxygen, pulse rate, and body temperature; and
- if the selected parameter indicates an abnormal condition of the holder, the holder can obtain access to a health care facility.

3. The system of claim 2, wherein the device makes an internet connection and transmits signals to the processor at the specified facility.

4. The system of claim 2, wherein:

the holder can monitor the parameter from the

device; and the parameter can be monitored from a special website designed for monitoring the parameter and health situations related to the parameter.

5. The system of claim 3, wherein:

- a panel receives the parameter from the device; and
- if the parameter worsens, then the panel automatically triggers an alarm to a health administrator so that the health administrator knows that the holder needs help, or an access level is modified for entrance of the holder to a hospital.

6. The system of claim 1, wherein:

- if the holder with the device is leaving the facility, a message from a speaker or indicator at the sensor location can remind the holder that a particular action should be performed within the facility prior to a departure; or
- if the device holder with the device attempts to enter the facility, the holder can enter the facility only if the sensor reads certain signals from the device.

7. A method for health monitoring, comprising:

- sensing one or more health parameters with a card about a person holding a card;
- sending the one or more health parameters from the card to one or more IOT (internet of things) devices;
- evaluating the one or more health parameters with the one or more IOT devices;
- initiating an emergency alert and activation as necessary in response to the evaluating of the one or more health parameters; and
- setting access levels for medical personnel to enable them to enter a non-medical facility to assist in health recovery of the person holding the card.

8. The method of claim 7, further comprising:

- sending sequences of notifications to various health recovery facilities; and
- changing an access level as needed for entry, by the person holding the card, to a health recovery facility.

9. The method of claim 7, further comprising:

- triggering an alarm relative to the emergency alert;
- changing an access level of the person holding the card as necessary for entry to a health re-

covery facility;
 sending a notification to the health recovery facility;
 and
 sending a notification to a doctor, representatives, relatives and other entities of the person. 5

10. The method of claim 7, further comprising:

sending sequences of notifications to various sections of a non-medical facility; and 10
 setting an access level needed for entry to a health recovery facility inside or outside of the non-medical facility.

11. The method of claim 7, further comprising basing the evaluating the one or more health parameters with the one or more IOT devices on a configuration rule. 15

12. An access control mechanism comprising: 20

a wearable item;
 a first internet interface connected to the wearable item;
 a cloud; and
 a second internet interface connected to an access control panel at one or more facilities and the cloud; and 25

wherein:

the wearable item is on a person;
 the wearable item provides information about the person to the cloud via the first internet interface;
 the one or more facilities obtain the information about the person from the cloud via the second internet interface; 35
 a first access level is the highest level for access to the one or more facilities;
 a third access level is the lowest level for access to the one or more facilities; 40
 a second access level is between the lowest level and the highest level for access to the one or more facilities;
 at least one of the one or more facilities is a medical facility; 45
 an access level for a medical person assigned to the medical facility is at a first access level;
 and
 the access level for a person that has a health condition determined by one or more abnormal readings of parameters sensed by the wearable item on the person, is changed from a third access level to a second access level. 50
 55

13. The mechanism of claim 12, wherein:

the access control panel determines an access

level for the person to the one or more facilities based at least in part on the information about the person;
 at least one of the one or more facilities is selected from a group comprising high security facilities, facilities holding valuable items, dangerous facilities, and monitoring facilities;
 the access level of a person that is assigned to the high security facility is at the first access level;
 the access level for a person that is not authorized to be at the facility is the third access level;
 the access level for a person that is guest at the facility is a second access level;
 the second access level is between the first access level and the third access level;
 the second access level can be changed for a person in view of new information about the person or the facility; and
 information from the wearable item indicates, at least in part, what access level that the person with the wearable item is granted.

14. The mechanism of claim 12, wherein if the access level for the person is changed to the second access level, then one or more persons or agencies for notification are selected from a group comprising nearest of kin, ambulance service, supervisor of the person, and medical services. 30

15. The mechanism of claim 12, wherein decisions are based on a configured rule that considers items of information about the person selected from a group comprising of levels of access, parameters sensed by the wearable item, destinations for aid, recovery processes, urgency of care needed, and evacuation. 35

FIG. 1

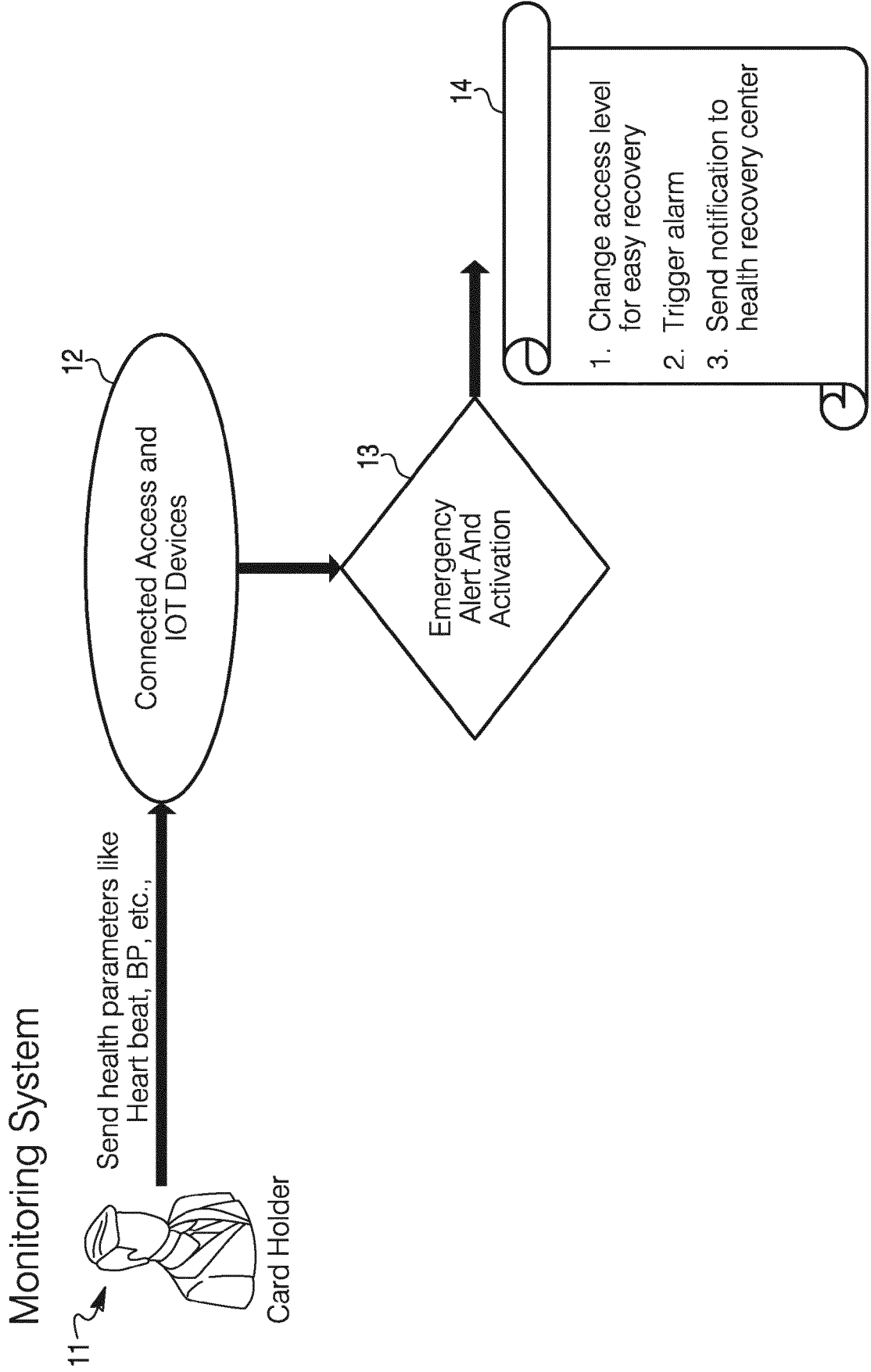


FIG. 2

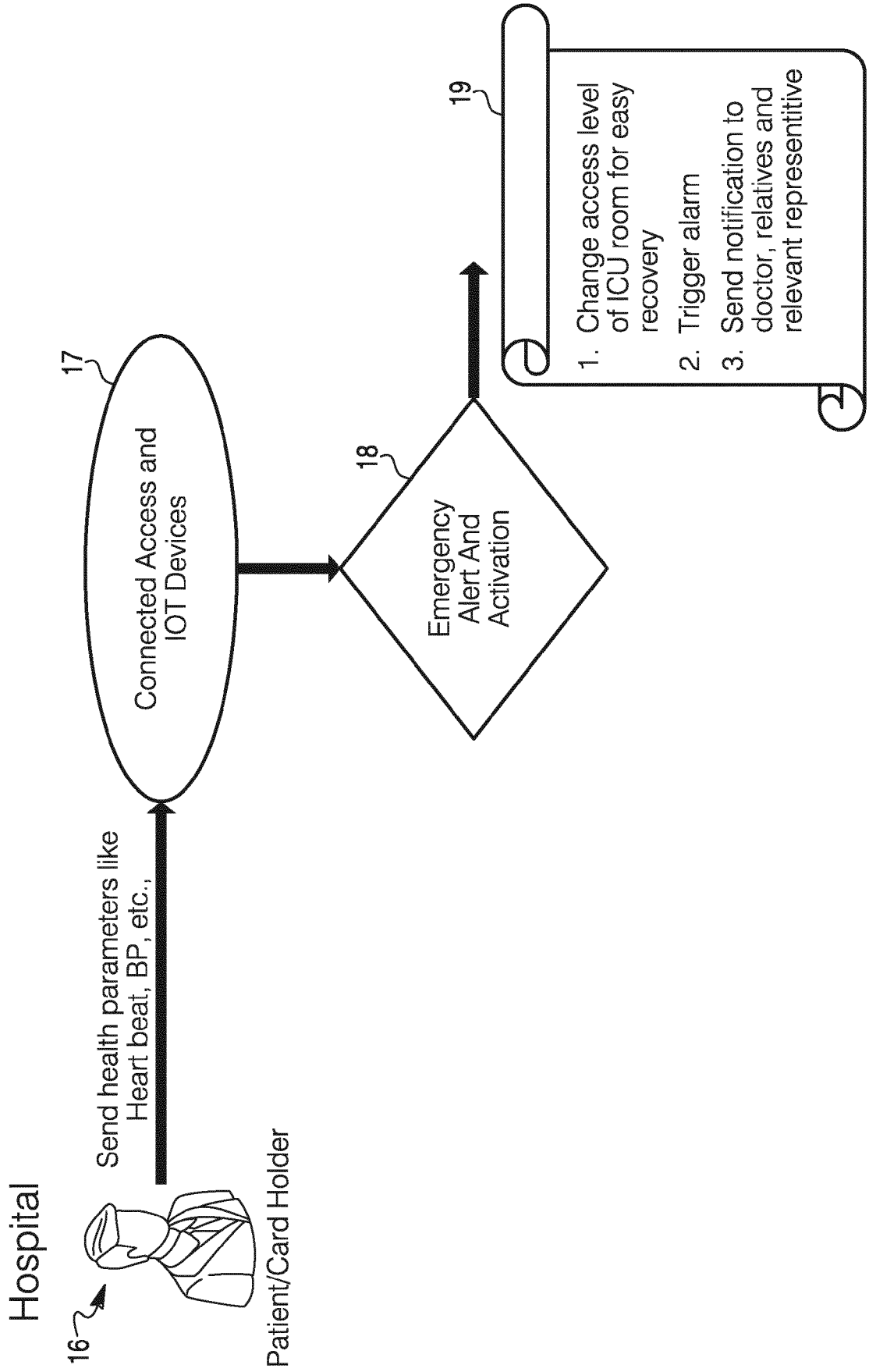


FIG. 3

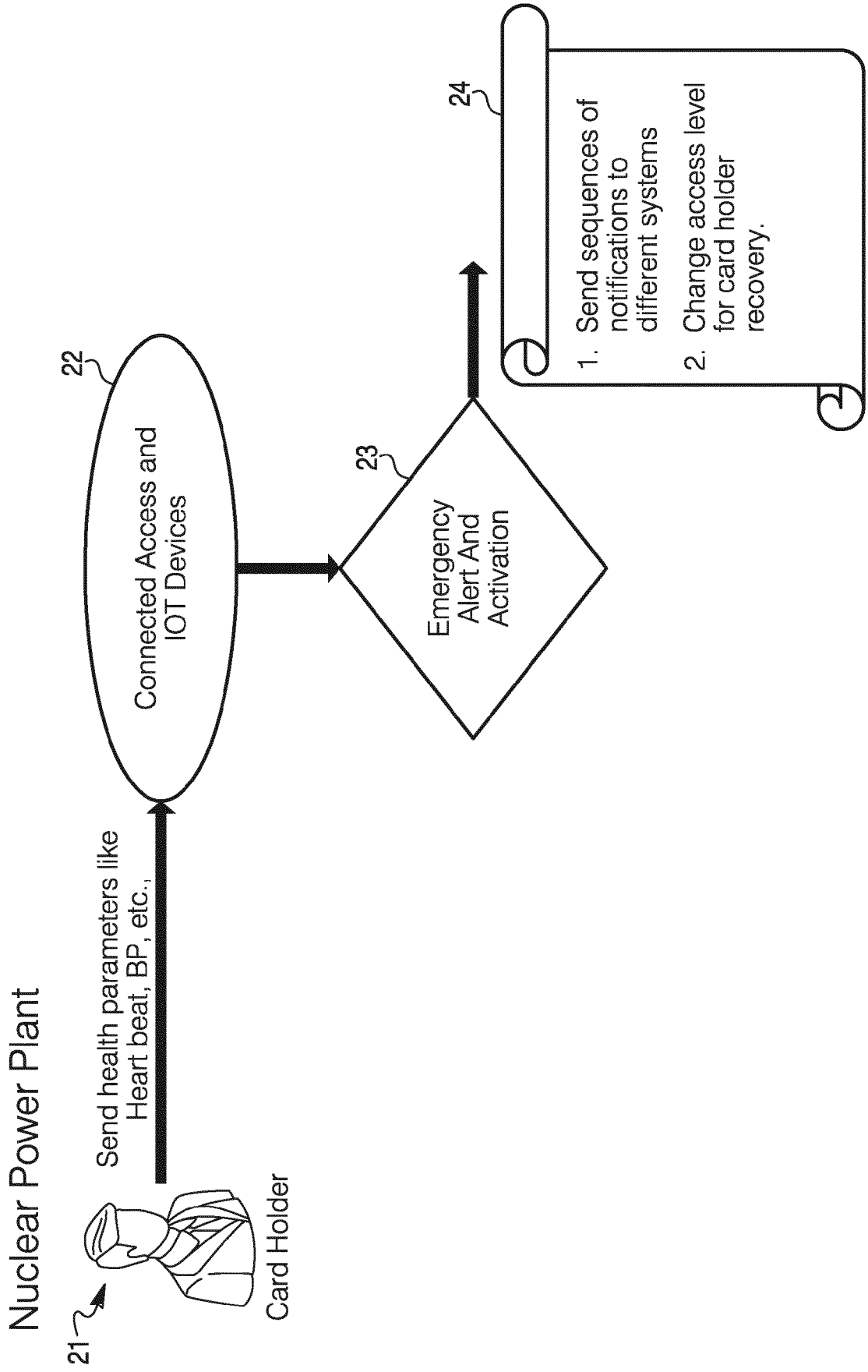
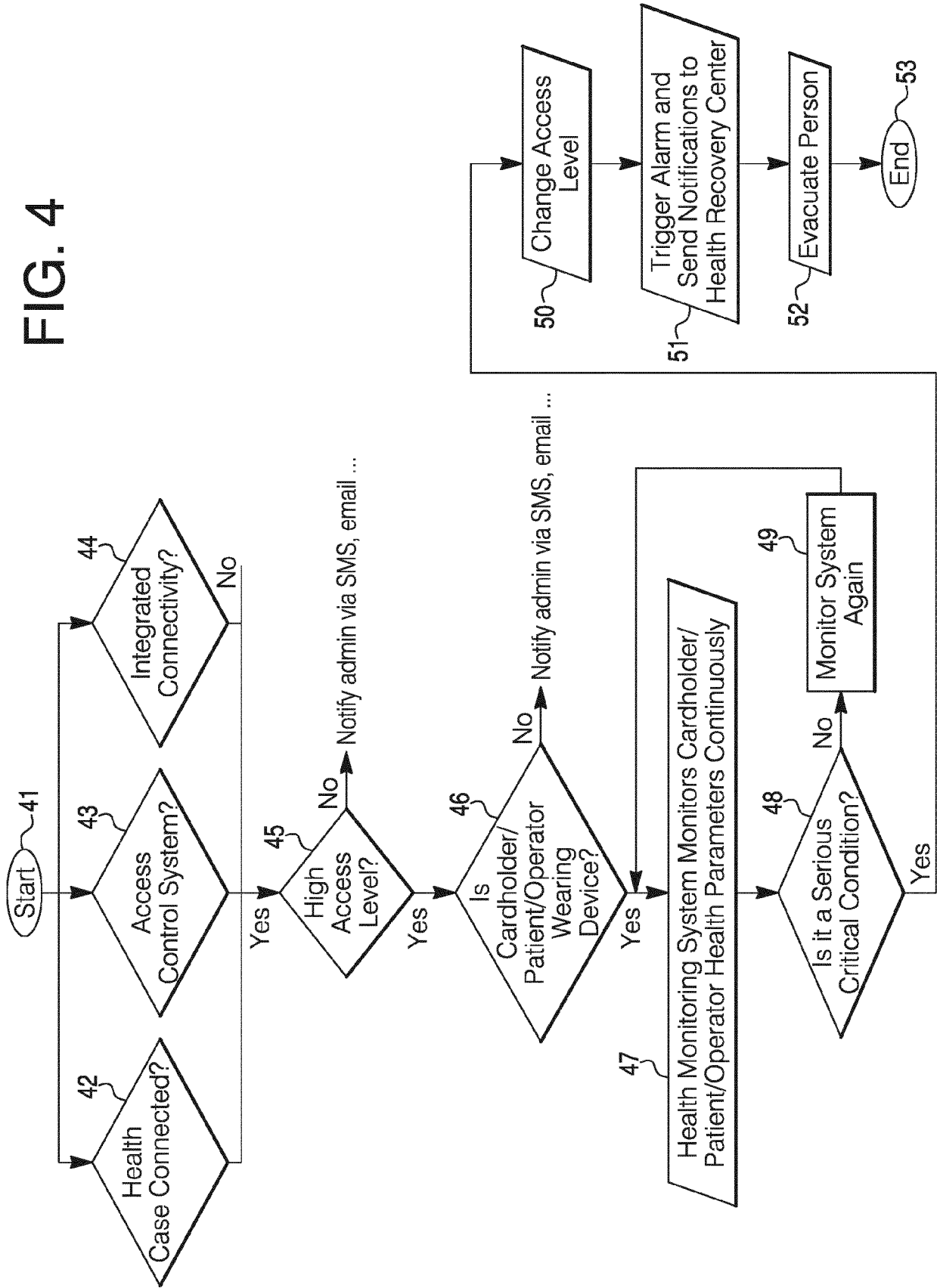


FIG. 4





EUROPEAN SEARCH REPORT

Application Number
EP 17 16 5479

5

10

15

20

25

30

35

40

45

50

55

DOCUMENTS CONSIDERED TO BE RELEVANT			
Category	Citation of document with indication, where appropriate, of relevant passages	Relevant to claim	CLASSIFICATION OF THE APPLICATION (IPC)
X	EP 2 189 957 A1 (YES GROUP APS [DK]) 26 May 2010 (2010-05-26) * paragraphs [0011] - [0027], [0040] - [0048], [0050] - [0054], [0060]; figure 1 *	1-11	INV. A61B5/00 A61B5/11
X	US 2008/045806 A1 (KEPPLER BERNHARD [US]) 21 February 2008 (2008-02-21) * paragraphs [0020] - [0021], [0032] - [0035], [0041] - [0050], [0066] - [0070] *	1-5	TECHNICAL FIELDS SEARCHED (IPC) A61B G06F G07C G08B
Y	US 2006/059365 A1 (HARPER W J [US]) 16 March 2006 (2006-03-16) * paragraphs [0006], [0010], [0012], [0039], [0042], [0047] - [0048]; claims 7,13; figures 3,4a *	12-15	
Y	US 2008/295152 A1 (GOI KOUICHI [JP]) 27 November 2008 (2008-11-27) * paragraphs [0006], [0024] - [0025], [0029] - [0036], [0041] - [0043]; figures 1-2 *	12-15	
X	US 2008/295152 A1 (GOI KOUICHI [JP]) 27 November 2008 (2008-11-27) * paragraphs [0006], [0024] - [0025], [0029] - [0036], [0041] - [0043]; figures 1-2 *	1-5	
X	US 8 400 268 B1 (MALIK AJAY [US] ET AL) 19 March 2013 (2013-03-19) * column 8, lines 27-53; figures 2,3a-c * * column 14, line 38 - column 15, line 37; figures 7a-b * * column 10, lines 8-30 *	7-11	
X	US 2015/356800 A1 (TILLMAN CORNELIUS [US]) 10 December 2015 (2015-12-10) * the whole document *	7-11	
The present search report has been drawn up for all claims			
Place of search Berlin		Date of completion of the search 20 September 2017	Examiner Kronberger, Raphael
CATEGORY OF CITED DOCUMENTS X : particularly relevant if taken alone Y : particularly relevant if combined with another document of the same category A : technological background O : non-written disclosure P : intermediate document T : theory or principle underlying the invention E : earlier patent document, but published on, or after the filing date D : document cited in the application L : document cited for other reasons & : member of the same patent family, corresponding document			

EPO FORM 1503 03/02 (P04C01)

ANNEX TO THE EUROPEAN SEARCH REPORT
ON EUROPEAN PATENT APPLICATION NO.

EP 17 16 5479

5

This annex lists the patent family members relating to the patent documents cited in the above-mentioned European search report. The members are as contained in the European Patent Office EDP file on The European Patent Office is in no way liable for these particulars which are merely given for the purpose of information.

20-09-2017

10

Patent document cited in search report	Publication date	Patent family member(s)	Publication date
EP 2189957 A1	26-05-2010	DK 2189957 T3	03-06-2013
		EP 2189957 A1	26-05-2010
		ES 2412256 T3	10-07-2013

US 2008045806 A1	21-02-2008	DE 102006038438 A1	21-02-2008
		EP 2054840 A1	06-05-2009
		US 2008045806 A1	21-02-2008
		WO 2008019800 A1	21-02-2008

US 2006059365 A1	16-03-2006	NONE	

US 2008295152 A1	27-11-2008	CN 101311971 A	26-11-2008
		EP 1995697 A1	26-11-2008
		JP 4974761 B2	11-07-2012
		JP 2008291550 A	04-12-2008
		KR 20080103906 A	28-11-2008
		TW 200909655 A	01-03-2009
		US 2008295152 A1	27-11-2008

US 8400268 B1	19-03-2013	US 8400268 B1	19-03-2013
		US 8674806 B1	18-03-2014

US 2015356800 A1	10-12-2015	NONE	

15

20

25

30

35

40

45

50

55

EPO FORM P0459

For more details about this annex : see Official Journal of the European Patent Office, No. 12/82

专利名称(译)	用于从可穿戴云连接的访问控制设备集成参数的系统和方法		
公开(公告)号	EP3238612A1	公开(公告)日	2017-11-01
申请号	EP2017165479	申请日	2017-04-07
[标]申请(专利权)人(译)	霍尼韦尔国际公司		
申请(专利权)人(译)	HONEYWELL INTERNATIONAL INC.		
当前申请(专利权)人(译)	HONEYWELL INTERNATIONAL INC.		
[标]发明人	SUNDAR NAGA PONRAMAN JENIFRAM AZHAGESAN MUTHUKUMAR		
发明人	SUNDAR, NAGA PONRAMAN, JENIFRAM AZHAGESAN, MUTHUKUMAR		
IPC分类号	A61B5/00 A61B5/11		
CPC分类号	A61B5/0002 A61B5/02055 A61B5/1113 A61B5/746 A61B5/747 A61B2505/01 G07C9/28 G07C2209/04 G08B21/0453 G08B25/016 G16H40/67 G16H50/30 H04L67/12 Y04S40/18 A61B5/002 A61B5/021 A61B5/024 A61B5/14551 G06F19/3418 G07C9/29 G08B25/006 H04L67/125		
代理机构(译)	霍顿MARK PHILLIP		
优先权	15/133014 2016-04-19 US		
外部链接	Espacenet		

摘要(译)

用于集成来自可穿戴云连接的访问控制设备的健康参数以提供生命安全措施以及用于控制对设施的访问的系统和方法。监视系统可以包括用于佩戴者或保持器的装置以及在指定设施的入口处或从其出口处的传感器，以及连接到传感器的处理器。该装置可以感测佩戴者或保持者的参数，该参数选自包括心跳，血压，血氧，脉搏率和体温的一组项目。如果所选参数指示异常或恶化状况，则佩戴者或持有者可获得进入医院或医疗机构的通道。卫生专业人员可以持有或佩戴允许他们进入受限设施的设备，以帮助需要医疗援助的设施内的人。

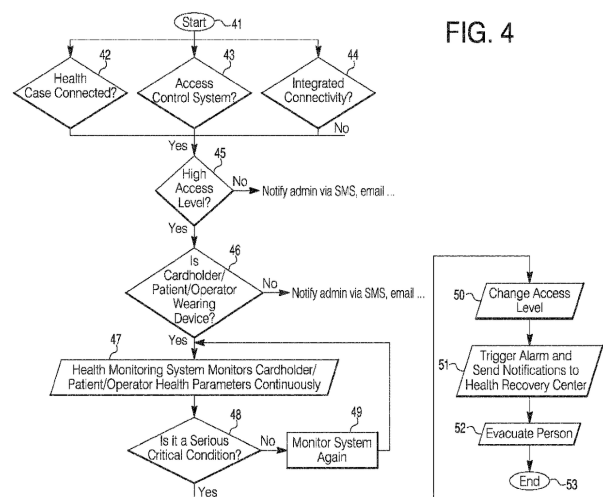


FIG. 4