



(11) **EP 1 599 132 B1**

(12) **EUROPEAN PATENT SPECIFICATION**

(45) Date of publication and mention of the grant of the patent:
13.08.2008 Bulletin 2008/33

(21) Application number: **04712354.2**

(22) Date of filing: **18.02.2004**

(51) Int Cl.:
A61B 5/02 (2006.01) A61B 5/04 (2006.01)

(86) International application number:
PCT/US2004/004782

(87) International publication number:
WO 2004/073513 (02.09.2004 Gazette 2004/36)

(54) **IMPLANTABLE MEDICAL DEVICE FOR ASSESSING HEART FAILURE**

IMPLANTIERBARES GERÄT UM HERZVERSAGEN ZU BEURTEILEN

DISPOSITIF MEDICAL IMPLANTABLE PERMETTANT D'ÉVALUER UN ÉTAT D'INSUFFISANCE CARDIAQUE À PARTIR D'ÉPISODES DE POULS ALTERNANT

(84) Designated Contracting States:
CH DE FR LI NL SE

(30) Priority: **18.02.2003 US 368278**

(43) Date of publication of application:
30.11.2005 Bulletin 2005/48

(73) Proprietor: **Medtronic Inc.**
Minneapolis, MN 55432 (US)

(72) Inventors:
• **BENNETT, Tommy, D.**
Shoreview, Minnesota 55126 (US)
• **DUFFIN, Edwin, G.**
North Oaks, Minnesota 55127 (US)
• **MULLIGAN, Lawrence, J.**
Andover, Minnesota 55304 (US)
• **HAMLEN, Robert, C.**
Edina, Minnesota 55435 (US)

• **ABO-AUDA, Wael**
Harriman, Tennessee 37748 (US)

(74) Representative: **Hughes, Andrea Michelle**
Frank B. Dehn & Co.
St Bride's House
10 Salisbury Square
London EC4Y 8JD (GB)

(56) References cited:
US-A- 5 713 367 US-A- 5 921 940
US-B1- 6 253 107

• **DATABASE BIOSIS [Online] BIOSCIENCES INFORMATION SERVICE, PHILADELPHIA, PA, US; 1996 EULER DAVID E ET AL: "Sympathetic influences on electrical and mechanical alternans in the canine heart" Database accession no. PREV199799286899 XP002289145 & CARDIOVASCULAR RESEARCH, vol. 32, no. 5, 1996, pages 854-860, ISSN: 0008-6363**

EP 1 599 132 B1

Note: Within nine months of the publication of the mention of the grant of the European patent in the European Patent Bulletin, any person may give notice to the European Patent Office of opposition to that patent, in accordance with the Implementing Regulations. Notice of opposition shall not be deemed to have been filed until the opposition fee has been paid. (Art. 99(1) European Patent Convention).

Description

[0001] The present invention relates generally to implantable medical devices (IMDs) for monitoring mechanical heart function of a patient's heart, detecting episodes of Mechanical Pulsus Alternans (MPA) and associated episode data, and providing an assessment of the state or progression of heart failure that can be employed diagnostically or in combination with a therapy delivery system for delivering an appropriate therapy.

[0002] The term "heart failure" (HF) as used herein embraces congestive heart failure and/or chronic heart failure as defined by the American College of Cardiology and the American Heart Association as set forth in a report of the American College of Cardiology/American Heart Association Task Force on Practice Guidelines (Committee to revise the 1995 Guidelines for the Evaluation and Management of Heart Failure) authored by Hunt et al. (ACC/AHA guidelines for the evaluation and management of chronic heart failure in the adult: executive summary, *J Am Coll Cardiol* 2001; 38(7): 2101-2113).

[0003] Many HF patients exhibit mechanical pulse alternans (MPA), which is a phenomenon wherein alternating mechanical contractions of the heart exhibit alternating values of contraction force or magnitude that cause ejected blood to exhibit like alternating values of diastolic pressure amplitude. MPA has historically be described for the systemic arterial system where alternating high and low arterial pulse pressures have been identified as being related to alternating strengths of contraction (and the resulting stroke volume) of the left ventricle. Similar observations have been described for the pulmonary artery pressure as an indicator of alternating contractile strengths of the right ventricle. MPA has been discussed in the context of increasing heart rate and has been attributed to various functional properties of the heart. See for example: Kodama et al., "Mechanical Alternans in Patients with Chronic Heart Failure", *J Card Fail* 2001; 7 (2):138-145; Kodama et al., "Changes in the Occurrence of Mechanical Alternans after Long-term Beta-blocker Therapy in Patients with Chronic Heart Failure. *Jpn Circ J* 2001; 65(8):711-716; and Surawicz et al., "Cardiac Alternans: Diverse Mechanisms and Clinical Manifestations", *J. Am Coll Cardiol* 1992; 20(2):483-499.

[0004] One potential explanation is based on alternate loading conditions of the left ventricle. If the left ventricle contracts strongly and empties well, then the volume of blood left in the left ventricle, i.e., the end systolic volume (ESV), will be nominal. If the heart rate is relatively low, the left ventricle will refill with blood from the left atrium during the next filling phase resulting in a relatively large end diastolic volume (EDV). This larger EDV will, according to Starling's Law of the Heart, cause the left ventricle to more forcefully contract, thereby emptying the left ventricle and resulting in a lower ESV and a relatively large arterial pulse pressure. Then, normal filling added to a lower ESV will result in a lower EDV. The lower EDV on

this beat will result in a weaker contraction (by Starling's Law) and less ejection on the next beat resulting in a lower arterial pulse pressure, a larger ESV and the cycle repeats.

5 **[0005]** Another explanation is that calcium uptake by the sarcoplasmic reticulum is impaired, resulting in less calcium available for the next cardiac cycle. This has been shown in the only animal model of controlled MPA. See Freeman et al, "An Evaluation of Pulsus Alternans in Closed-chest Dogs", *Am J Physiol* 1992; 262(1 Pt 2): H278-H284.. These observations were made in animals where the preload was lowered using an occluder on the vena cava while the heart rate was maintained at 200 bpm. Importantly, preload is decreasing in this setting while MPA increases. This does not rule out volume changes as important determinants of MPA in patients but does suggest that the alterations in calcium handling may be more crucial to the development of MPA.

10 **[0006]** Alternate descriptions of MPA are based on other cyclic properties of the cellular mechanisms in the myocardial cells. These mechanisms transfer calcium to and from intracellular storage and release sites and are responsible for the contraction and relaxation of the myocyte. If more Ca⁺⁺ were available for release, it is expected that the contractile force developed would be greater. The normal cellular Ca⁺⁺ cycling processes are disrupted by disease, such as HF, and the disrupted processes result in cyclic variations that can be exaggerated, producing hemodynamic variants such as MPA.

15 **[0007]** Although current pacing systems, incorporated into a pacemaker, e.g., the MEDTRONIC[®] InSync[®] Model 8040 pacemaker IPG, or into an ICD IPG, e.g., the MEDTRONIC[®] InSync[®] Model 7272 ICD IPG, that provide right and left heart pacing to alleviate HF symptoms collect limited amounts of heart rate data (as well as tachyarrhythmia episode data in the case of ICD IPGs), such data does not always provide sufficient information to assess whether the HF symptoms are being alleviated or are worsening. Nor, do such IPGs presently have the capability of measuring mechanical heart function including MPA and formulating and delivering an appropriate therapy based upon the measured mechanical heart function.

20 **[0008]** HF patient's hearts frequently exhibit MPA but do not exhibit an abnormal EGM or electrical instability that comprises or is a precursor to a tachyarrhythmia. Hearts of patients that are susceptible to tachyarrhythmia episodes exhibit electrical malfunctions that cause mechanical malfunctions. Malignant tachyarrhythmias, including ventricular fibrillation or flutter (VF) or high rate ventricular tachycardia (VT) cause sudden loss of mechanical heart function and cardiac output that can lead to death unless the heart is cardioverted. Consequently, numerous algorithms have been proposed over the years for use in ICDs to identify tachyarrhythmia episodes, typically from measured rate, onset and stability of the measured EGM through sophisticated signal processing techniques.

[0009] In this regard, it has long been postulated that a pattern of beat-to-beat alternation in the amplitude or polarity of the T-wave of the characteristic PQRST complex of the ECG or EGM is indicative of electrical instability and predictive of the susceptibility to tachyarrhythmia as set forth in U.S. Patent No. 5,265,617, for example. This pattern of alternation, referred to as "electrical alternans" or "T-wave alternans", is not always present, but often emerges under conditions where the patient's heart experiences an increased demand due to an increased level of physical or mental stress. Electrical alternans can often be measured at the body surface as a subtle beat-to-beat change in the repeating pattern of an ECG waveform. An overview of electrical alternans is given by Rosenbaum, Albrecht and Cohen in "Predicting sudden cardiac death from T wave alternans of the surface electrocardiogram: promise and pitfalls", *Journal of Cardiovascular Electrophysiology*, November, 1996, Vol. 7(11), pages 1095-1111.

[0010] Thus, episodes of electrical alternans and the heart rates at which the episodes occur have been used to assess patients' risk of developing ventricular arrhythmias. This analysis reflects an alternating pattern of the sequence of electrical depolarization as it spreads through the right and left ventricular chambers. Secondary to this electrical derangement, there may be a variable contraction sequence yielding ventricular and systemic blood pressure alternans patterns similar to MPA even though the myocardial fibers are healthy. Thus, the patient at risk of arrhythmias will exhibit electrical alternans and may or may not exhibit mechanical alternans all because of variation in the propagation paths of the excitatory wavefronts rather than due to impaired myocardial fiber contractility.

[0011] It has been asserted in U.S. Patent No. 6,253,107 that electrical alternans is believed to result from an underlying pattern of alternation in the biochemical processes that drive the functioning of the cardiac muscle. In light of observations of the occasional association of MPA with electrical alternans in hearts susceptible to tachyarrhythmias, it is further asserted that electrical alternans begins to have a measurable effect on the contraction of the muscle cells as the level of electrical alternans increases. An article by Clancy, Smith, and Cohen entitled "A simple electrical-mechanical model of the heart applied to the study of electrical-mechanical alternans", *IEEE Transactions on Biomedical Engineering*, June, 1991, Vol. 38(6), pages 551-60, is asserted in the '107 patent as supporting this theoretical relationship between electrical alternans and MPA. The Clancy et al. article noted evidence showing that a subtle electrical alternans observed in the surface ECG may be correlated with the susceptibility to ventricular fibrillation, and offered evidence that MPA generally accompanies electrical alternans. The article indicated that there exists a regime of combined electrical-mechanical alternans during the transition from a normal rhythm towards a fibrillatory rhythm, that the detected degree of alternation is

correlated with the relative instability of the rhythm, and that the electrical alternans and MPA may result from a dispersion in local electrical properties leading to a spatial-temporal alternation in the electrical conduction process. This spatial-temporal alternation in the electrical conduction process of electrical alternans is therefore postulated to be the cause of a corresponding MPA detected in the blood pressure waveforms.

[0012] It is also asserted in the '107 patent that a healthy heart exhibits a certain level of heart rate variability (HRV) that is evidenced by slightly varying, beat-to-beat heart rates. It is suggested that certain patient's hearts that are susceptible to tachyarrhythmias at times lack such a normal HRV and may exhibit the electrical alternans and/or an alternation in the measured beat-to-beat blood pressure waveform, referred to as "blood pressure alternans" in the '107 patent. A number of IMDs and methods are proposed in the '107 patent that are based on this understanding of HRV and the association of electrical alternans with mechanical alternans in patient's hearts that are susceptible of tachyarrhythmias.

[0013] A pacing system is proposed in the above-referenced '107 patent that would periodically pace to overdrive the heart at a slightly varying and random beat-to-beat pacing rate for short time periods to mimic natural HRV. It is also suggested that a measure of cardiac stability, which can be either a measure of electrical alternans or a measure of blood pressure alternans, be developed from the EGM or a blood pressure sensor, respectively, and that the HRV inducing string of pacing pulses can be modified when either measure is present. It is generally suggested that such measure(s) could be employed to either trigger or inhibit or modify the delivery of the pacing pulses to induce HRV. However, no specific examples are provided as to how the intervals between delivered pacing pulses would actually be modified in the presence of either or both of measured electrical alternans and blood pressure alternans or in the absence of both.

[0014] A further method is proposed in the above-referenced '107 patent to simply monitor electrical alternans from the EGM and blood pressure alternans from blood pressure measurements in order to assess cardiac electrical stability from both, particularly to identify a heart state susceptible to tachyarrhythmias. The '107 patent does not set forth any explanation of how the cardiac electrical stability is assessed. However, it appears from the reliance upon the Clancy et al. article and the express description that cardiac instability indicating susceptibility to a tachyarrhythmia would be declared when both electrical alternans and blood pressure alternans are simultaneously present.

[0015] A device according to the preamble of claim 1 is known from US-A-5 921 940. Thus, a need continues to exist for an IMD that can be programmed to collect meaningful blood pressure data evidencing a mechanical malfunction of the heart, particularly MPA, associated with HF. A need continues to exist for such an IMD that

accumulates event data that can be assessed within the implantable monitor stimulator, or an external medical device that the data is transmitted to, to develop a current indicia of the HF state from which the progression of the disease and the assessment of efficacy of prescribed treatment, e.g., programmed parameters of right and left heart pacing, can be assessed.

[0016] In view of the above need, the present invention provides a system as defined in claim 1 for detecting MPA as well as associated MPA episode data and processing the MPA episode data together with MPA episode trend data within an IMD to provide indicia related to the mechanical performance of the HF patient's heart so that the response of the heart to drug or electrical stimulation therapies prescribed to reduce HF symptoms can be assessed.

[0017] In accordance with this invention, it is proposed that a HF patient with normal or abnormal cardiac electrical activation sequences may have spontaneous, intermittent, MPA episodes that may not be accompanied by electrical alternans if the contractile processes (calcium cycling and actin-myosin coupling) of the individual myocardial fibers are impaired. Impaired contractile processes can produce beat-to-beat alternating pressure amplitudes despite the normal spread of electrical activity (hence, no electrical alternans).

[0018] The present invention is based on the premise that certain MPA characteristics of an MPA episode can be used alone or as a group as a diagnostic marker of HF state. In one embodiment, an MPA episode data set is collected upon satisfaction of MPA detection criteria. The MPA episode data set can be stored in memory associated with a time and date stamp. The MPA characteristics of each MPA episode data set in a series of MPA episode data sets collected over time can be compared or plotted to determine if a trend indicative of change in HF state is discernible.

[0019] The MPA episode data points of an MPA episode can comprise one or more of the current number of MPA episodes per unit time, the MPA episode duration, the heart rate at MPA onset and/or MPA end, and various values of the MPA magnitude. The MPA magnitude comprises the difference between the systolic peak blood pressures of two heartbeats. The MPA magnitude data point may be the average or mean MPA magnitude or the maximal MPA magnitude. In certain cases, MPA episodes are marked by a gradual onset and recovery. It is presumed that the time course of the onset and recovery of the MPA may be indicative of the severity of the HF state. Therefore, the MPA magnitudes of an MPA data set accumulated prior to and following declaration of MPA onset may be compared to determine an MPA rate of change or slope at MPA onset. The MPA magnitudes of an MPA data set accumulated prior to and following declaration of MPA end may be compared to determine an MPA rate of change or slope at MPA end. The MPA characteristics of a series of MPA episode data sets can be compared. Changes in one or more of such MPA char-

acteristics can be assessed to determine if the HF state is deteriorating, improving, or staying substantially the same over time.

[0020] For example, the heart rate at detection of MPA (i.e., the MPA onset heart rate) is stored for each of "N" stored MPA episodes. The N MPA onset heart rates can be compared to develop an MPA onset heart rate trend. If the MPA heart rate trend shows a heart rate increase or decrease or remain substantially constant over time, then it may be assumed that the HF state is deteriorating, improving or remaining stable. Similarly, an increase in frequency of MPA episodes, the durations of the MPA episodes, and one or more of the above-described MPA magnitudes, can demonstrate that the HF state is deteriorating. A decrease in frequency of MPA episodes, the durations of the MPA episodes, and the MPA magnitude (s) can demonstrate that the HF state is improving.

[0021] The present invention is preferably implemented in an implantable monitor capable of measuring the EGM of the heart and a mechanical performance parameter of the heart measured by a blood pressure sensor in the right or left ventricles or by trans-cardiac strain gauges, impedance sensors or sonomicrometers, or by blood flow sensors, motion sensors, force sensors, e.g., accelerometers measuring contraction strength, etc. In one example of the practice of the present invention, the above-identified Chronicle® IHM and pressure sensing lead can be implanted in a HF patient to measure the EGM to determine heart rate and to measure systolic blood pressure. Advantageously, it is not necessary to measure atmospheric pressure to derive absolute pressure measurements in the practice of the present invention, but such absolute pressure data can also be collected if desired. In accordance with the present invention, an algorithm is incorporated to detect the onset and end of MPA episodes.

[0022] The MPA episode data points accumulated by the operating algorithm of the IHM are then determined. The IHM would preferably be capable of initiating telemetry transmissions of MPA episode data points to an external medical device. Preferably, the external medical device (or the IHM) would be capable of initiating data transfers to medical care providers of such trend data so that the HF state can be assessed to initiate any appropriate changes in monitoring and/or therapy delivery to the patient.

[0023] As described above, the MPA episode data points would be quantified and stored as an intermittent or continuous diagnostic variable within the IHM. Alternatively, it is envisaged that the MPA episode data points would be quantified and stored as an intermittent or continuous diagnostic variable within a therapy delivery IMD, e.g., an implantable pacemaker or drug delivery device. For example, the system of the present invention could be an integrated component to a drug delivery system (implanted or external) and used to manually or automatically determine the dose, frequency and duration of therapeutic drug delivery. Alternatively, and in the preferred

embodiment of this device, the system would be part of a cardiac stimulation device capable of delivery of present and emerging electrical therapies to the heart such as pacing, resynchronization, defibrillation, or other stimulation such as PESP stimulation. By example, the increased occurrence of MPA may signal worsening of the cardiac function and may signal an implanted defibrillator that the patient's risk of an dangerous arrhythmia is increased and that the logic for detecting the arrhythmia and/or deciding on the sequence of tiered conversion therapies could be altered to increase the probability of successful detection and treatment. If the IMD provides a pacing function, the heart's response to the applied pacing regimen can be assessed from the magnitude, timing and duration of MPA episodes.

[0024] These and other advantages and features of the present invention will be more readily understood from the following detailed description (given by way of example only) of the preferred embodiments thereof, when considered in conjunction with the drawings, in which like reference numerals indicate identical structures throughout the several views, and wherein:

FIG. 1 is a schematic diagram of an exemplary system in which the present invention is preferably implemented;

FIG. 2 is a simplified block diagram of one embodiment of IMD circuitry and associated leads employed in the system of FIG. 1 enabling monitoring of MPA from ventricular blood pressure in accordance with the present invention;

FIG. 3 is a top level flowchart of the detection of MPA episodes and the collection and processing of blood pressure data and associated event data during the MPA episode that can be stored in IMD memory or employed to trigger or alter a pacing therapy;

FIG. 4 is a detailed flowchart of step S118 of FIG. 3;

FIG. 5 is a detailed flowchart of step S120 of FIG. 3;

FIG. 6 is a graphical schematic depiction of such an MPA episode; and

FIG. 7 is a graphical depiction MPA characteristic trends manifested by HF patient MPA episode data sets accumulated over time from four patients.

[0025] In the following detailed description, references are made to illustrative embodiments for carrying out the invention. It is understood that other embodiments may be utilized without departing from the scope of the invention. An embodiment of the invention is disclosed in detail in the context of an exemplary IMD that is modified to accumulate MPA episode data points that are characteristic of the MPA episodes that can be employed to assess HF state of a patient's heart employing one or more sensor for detecting mechanical heart function in operative relation to one or more heart chamber. This illustrated embodiment of the invention is embodied in an IHM but can be incorporated into therapy delivery IMDs as noted above, e.g., an AV sequential, bi-atrial and bi-ventricular,

pacing system operating in demand, atrial tracking, and triggered pacing for restoring synchrony in depolarizations and contraction of left and right ventricles in synchronization with atrial sensed and paced events for treating HF and/or bradycardia. The embodiments of the invention can therefore comprise multi-chamber pacing systems programmable to operate as a two, three or four channel pacing system having an AV synchronous operating mode for restoring upper and lower heart chamber synchronization and right and left atrial and/or ventricular chamber depolarization synchrony.

[0026] It will be appreciated from the following description that an IMD incorporating the present invention may be utilized to obtain the aforementioned parameters as stored patient data over a period of time. The treating physician is able to initiate uplink telemetry of the patient data in order to review it to make an assessment of the HF state of the patient's heart. The physician can then determine whether a particular therapy is appropriate, prescribe the therapy for a period of time while again accumulating the stored patient data for a later review and assessment to determine whether the applied therapy is beneficial or not, thereby enabling periodic changes in therapy, if appropriate. Such therapies include drug therapies and electrical stimulation therapies, including PESP stimulation, and pacing therapies including single chamber, dual chamber and multi-chamber (bi-atrial and/or bi-ventricular) pacing. Moreover, in patients prone to malignant tachyarrhythmias, the assessment of HF state can be taken into account in setting parameters of detection or classification of tachyarrhythmias and the therapies that are delivered.

[0027] FIG. 1 schematically illustrates a system that can advantageously be employed in monitoring MPA and collecting and processing MPA episode data in accordance with the teachings of the present invention. Not all of the components or functions of the depicted exemplary system are necessarily employed in the practice of the present invention as described further below.

[0028] The exemplary system illustrated in FIGS. 1 and 2 comprises an exemplary IMD 100 and blood pressure lead 12 locating a blood pressure sensor 20 within the right ventricle near the outflow tract of the patient's heart 10. The exemplary system further comprises an externally worn or otherwise carried atmospheric pressure reference monitor 200 to record contemporaneous atmospheric pressure values, and an external programmer 300. External programmer 300 is used to communicate with the IMD 100 and the atmospheric pressure reference monitor 200 in order to program the operating modes and parameters of IMD 100 or interrogate the data stored in memory of the IMD 100 and atmospheric pressure reference monitor 200.

[0029] The IMD 100 preferably comprises the above-referenced Medtronic® CHRONICLE® Model 9520 IHM having the capabilities of deriving and storing the above-referenced pressure data as well as heart rate data from the sensed ventricular EGM and patient activity level as

monitored by an activity sensor 106. The pressure sensor lead 12 preferably comprises the above-referenced Model 4328A pressure sensor lead that senses blood pressure using a pressure sensing transducer 20 of the type disclosed in commonly assigned U.S. Patent No. 5,564,434. The pressure sensor lead 12 also incorporates a distal EGM sense electrode 26 and conventional soft pliant tines that provide passive fixation of the sense electrode 26 in the right ventricle in a manner well known in the art. The proximal connector assembly of pressure sensor lead 12 is configured in conformance with IS-1 standards for bipolar pacing leads and is fitted into a conforming bore of the connector 180 of IMD 100 in the conventional manner. It will be understood that other possible configurations of the IMD 100 can provide cardioversion/defibrillation and/or pacing therapies requiring additional implantable cardiac leads and electrodes preferably for synchronously pacing upper and lower and right and left heart chambers for improving cardiac output in patients suffering from HF.

[0030] The CHRONICLE® Model 9520 IHM measures absolute blood pressure, and so the patient is also provided with the atmospheric pressure reference monitor 200, e.g., the above-referenced Medtronic® Model No. 2955HF atmospheric pressure reference monitor. Atmospheric pressure reference monitor 200 is schematically depicted as worn on the patient's wrist, optionally including a timepiece function 250, but it may take other portable configurations so that it can accompany the patient in the patient's daily routine. The functions of an exemplary atmospheric pressure reference monitor 200 in relation to the IHM 100 and programmer 300 are disclosed in commonly assigned U.S. Patent No. 5,904,708.

[0031] Uplink telemetry (UT) and downlink telemetry (DT) transmissions between an RF telemetry antenna 134 of the IMD 100 (schematically illustrated as extending from the connector 180 of the IMD 100) and a telemetry antenna 334 of the external programmer 300 are schematically illustrated in FIG. 1. Similarly, UT and DT transmissions between an RF telemetry antenna 234 of the atmospheric pressure reference monitor 200 and the telemetry antenna 334 of the external programmer 300 are also illustrated in FIG. 1. It will be understood that a direct cable or plug-in connection can be made between ports of the atmospheric pressure reference monitor 200 and the external programmer 300 instead of employing the depicted UT and DT transmissions between the RF telemetry antennas 234 and 334 when atmospheric pressure data is to be read from memory in the atmospheric pressure reference monitor 200. The RF telemetry system preferably operates at a long range of about 2 meters or more in a relatively high frequency range. For convenience of description, the preferred embodiment is described as follows using long range RF telemetry transmission, but the invention and following claims are not to be interpreted as so limited. Similarly, the terms "telemeter", "telemetry transmission" and the like are intended to embrace any such action and manner of conveying

data and commands between the IMD 100, the atmospheric pressure reference monitor 200, and the external programmer 300 or other monitoring device.

[0032] In conventional use of the depicted system, the storage of absolute blood pressure data and ambient pressure data continues for a period of days and the data is periodically transmitted to the external programmer 300 during a telemetry session initiated by medical personnel operating the external programmer 300. The ambient pressure is employed to correct the absolute pressure data.

[0033] However, the absolute pressure data that is processed in accordance with the present invention to assess HF state from MPA episode data does not require such correction. The present invention is preferably implemented in a system as depicted in FIGs. 1 and 2 operating in accordance with the flow charts of FIGs. 3 - 7 to monitor and assess HF state from MPA episode data accumulated from beat-to-beat blood pressure samples and associated data without use of the ambient pressure data. In the case where the IMD 100 is an implantable therapy delivery device, the assessment of MPA can be employed to assess efficacy of the delivered therapy.

[0034] FIG. 2 is a simplified block diagram of the pressure sensing lead 12 and IMD 100 in relation to patient's heart 10. The lead 12 has first and second lead conductors 14 and 16 extending from the connector 180 to the blood pressure sensor 20 disposed near the distal fixation mechanism 26 and to the distal tip sense electrode 26. The blood pressure sensor 20 preferably includes a variable pickoff capacitor and a fixed reference capacitor and signal modulating circuit described in detail in the above-referenced '434 patent that develops both blood pressure and temperature time-modulated intervals that are decoded as blood pressure and temperature signal values in demodulator 150. The proximal end of lead 12 is formed as a conventional bipolar, in-line pacing lead connector and is coupled to the monitor connector 180 which is formed as a conventional bipolar in-line pacemaker pulse generator connector block assembly.

[0035] The circuitry of IMD 100 is powered by battery 108 and generally comprises a microcomputer 114 coupled through data communication bus 130 with an input/output circuit 112 that is coupled to the activity sensor 106, the telemetry antenna 134, the lead conductors 14, 16, and a crystal 110. The input/output circuit 112 includes the digital controller/timer circuit 132 and the associated components including the crystal oscillator 138, power-on-reset (POR) circuit 148, Vref/BIAS circuit 140, ADC/MUX circuit 142, RF transmitter/receiver circuit 136, optional activity circuit 152 and pressure signal demodulator 150.

[0036] Crystal oscillator circuit 138 and crystal 110 provide the basic timing clock for the digital controller/timer circuit 132. Vref/BIAS circuit 140 generates stable voltage reference Vref and current levels from battery 108 for the circuits within the digital controller/timer circuit 132, and the other identified circuits including microcom-

puter 114 and demodulator 150. Power-on-reset circuit 148 responds to initial connection of the circuitry to the battery 108 for defining an initial operating condition and also resets the operating condition in response to detection of a low battery voltage condition. Analog-to-digital converter (ADC) and multiplexor circuit 142 digitizes analog signals V_{prs} and V_{temp} received by digital controller/timer circuit 132 from demodulator 150 for storage by microcomputer 114.

[0037] Data signals transmitted out through RF transmitter/receiver circuit 136 during telemetry are multiplexed by ADC/MUX circuit 142. Voltage reference and bias circuit 140, ADC/MUX circuit 142, POR circuit 148, crystal oscillator circuit 138 and optional activity circuit 152 may correspond to any of those presently used in currently marketed, implantable cardiac pacemakers.

[0038] The digital controller/timer circuit 132 includes a set of timers and associated logic circuits connected with the microcomputer 114 through the data communications bus 130. Microcomputer 114 contains an on-board chip including microprocessor 120, associated system clock 122, and on-board RAM and ROM chips 124 and 126, respectively. In addition, microcomputer 114 includes an off-board circuit 118 including separate RAM/ROM chip 128 to provide additional memory capacity. Microprocessor 120 is interrupt driven, operating in a reduced power consumption mode normally, and awakened in response to defined interrupt events, which may include the periodic timing out of data sampling intervals for storage of monitored data, the transfer of triggering and data signals on the bus 130 and the receipt of programming signals. A real-time clock and calendar function may also be included to correlate stored data to time and date.

[0039] Microcomputer 114 controls the operating functions of digital controller/timer 132, specifying which timing intervals are employed, and controlling the duration of the various timing intervals, via the bus 130. The specific current operating modes and interval values are programmable. The programmed-in parameter values and operating modes are received through the antenna 134, demodulated in the RF transmitter/receiver circuit 136 and stored in RAM/ROM chip 128.

[0040] Data transmission to and from the external programmer 300 of FIG. 1 is accomplished by means of the telemetry antenna 134 and the associated RF transmitter and receiver 136, which serves both to demodulate received DT transmissions and to UT transmit data to the external programmer 300. A number of power, timing and control signals described in greater detail in the above-referenced '434 patent are supplied by the digital controller/timer circuit 132 to the demodulator 150 to initiate and power the operation of the blood pressure sensor 20 and selectively read out the pressure and temperature signals V_{prs} and V_{temp} . An active lead conductor 16 is attached through the connector block terminals to input and output terminals of demodulator 150 that supplies a voltage VREG at the output terminal. A passive lead con-

ductor 14 is coupled through to the VDD supply terminal of the demodulator 150. The voltage signals V_{prs} and V_{temp} developed from intervals between current pulses received at the input terminal are provided by demodulator 150 to the digital controller/timer circuit 132. The voltage signals V_{prs} and V_{temp} are converted to binary data in an ADC/MUX circuit 142 and stored in RAM/ROM chip 128 in a manner well known in the art.

[0041] The IMD 100 functions as an implantable physiologic signal sensor, specifically for monitoring and storing digitized blood pressure and temperature from the absolute pressure and temperature sensor 20 as well as patient activity and EGM data as described below. The EGM of the heart, particularly the R-wave of the PQRS complex, is sensed between the active distal tip electrode 26 and the indifferent electrode formed by the hermetically sealed housing or can 178 of IMD 100 by sense amplifier 170 in a conventional unipolar sensing configuration. The sense amplifier 170 declares a V-EVENT when the R-wave is sensed, and the V-EVENT is supplied to the digital controller/timer circuit 132 and functions as an interrupt to the microprocessor 120 in a manner well known in the art.

[0042] FIG. 2 also shows the configuration of a therapy delivery device by inclusion of the therapy delivery system block 40 shown in broken lines. The particular therapy delivery system 40 may include one or more of the systems described above.

[0043] In accordance with the present invention, the IMD 100 periodically stores digitized MPA blood pressure data from sampled blood pressure and certain heart rate data as MPA characteristics when MPA detection criteria are met. Other data, e.g., patient activity level and date and time can also be stored in association with the MPA characteristics as MPA episode data in RAM. Trend data can be derived from comparison of MPA episode data points of a series of MPA episodes in IHM 100. Or, the MPA trend data can be determined in the programmer 300 or a more remote data processing center receiving UT transmissions of the MPA episode data sets from the IHM 100 in real time or after temporary storage in RAM of the IHM 100. A patient alert or a notification to the physician can be initiated if the trend indicates deterioration of the HF state.

[0044] The MPA episode data points can comprise one or more of the frequency of MPA episodes per unit time, the duration of each MPA episode, the heart rate at onset and/or termination of each MPA episode, the average or mean heart rate of the MPA episode, and the magnitude of the MPA. The MPA magnitude comprises the difference between the systolic peak blood pressures of at least two successive heartbeats. The MPA magnitude data point may be that MPA magnitude measured at onset or as an average or mean MPA magnitude or the maximal change in the MPA magnitude of all MPA magnitudes measured during the MPA episode. In certain cases, MPA episodes are marked by a gradual onset and recovery. It is presumed that the time course of the onset

and recovery of the MPA may be indicative of the severity of the HF state. Therefore, the MPA magnitudes of an MPA episode data set may be compared to determine an MPA rate of change from detection of onset to a maximal MPA magnitude and then from the maximal MPA magnitude until recovery. The MPA rate of change during an onset phase and/or during a recovery phase can comprise an MPA episode data point of the MPA episode data set. Changes in one or more of such MPA episode data points can be assessed to determine if the HF state is deteriorating, improving, or staying substantially the same over time. FIG. 6 is a graphical schematic depiction of such an MPA episode marked by the alternating high and low peak pressures and showing the MPA duration extending from MPA onset to MPA end. The associated heart rate is also depicted in FIG. 6 as increasing at MPA onset and decreasing at MPA end.

[0045] The collection of such MPA episode data points of an MPA episode is illustrated in FIG. 3. Steps S100 - S106 relate to detection of a normal sinus rhythm (NSR) R-wave resulting in a V-EVENT in FIG. 2, and steps S108 - S 118 relate to the initial and continued detection of an MPA episode. It will be understood that the particular order of these steps of FIG. 3 may be changed from the depicted order. For example, collection of blood pressure data and detection of MPA during successive heart cycles can precede determination that the heart is in NSR.

[0046] It is known that MPA that might not otherwise be present when the heart exhibits NSR can be observed following ectopic R-waves (extrasystoles) or during tachycardia episodes. MPA data collected under such circumstances may not be a reliable or useful indicator of HF state. At least the MPA data should be identified as associated with an extrasystole or collected during a tachycardia episode. In step S 102, the beat-to-beat interval or heart rate is determined each time that an R-wave (V-EVENT) is detected for comparison to a tachycardia interval or heart rate. Optionally, the QRS complex width can be measured and compared to a width threshold or morphology template characteristic of either the wider QRS complex or the narrower normal QRS complex. The thresholds and the comparisons to be employed can be programmed by the physician in step S100. Therefore, a determination is made in step S102 whether or not the last V-EVENT signifies an extrasystole or a tachycardia depending upon the results of the comparison of the beat-to-beat interval to the tachycardia threshold and/or by comparison of QRS complex to the QRS threshold

[0047] If the results of the comparison in step S104 indicate NSR, then the steps S108 - S 120 are followed. If the results of the comparison in step S104 do not indicate NSR, then the event is tagged as "not NSR" and the steps S108 - S 120 are followed. However, the physician may program the IMD to respond in other ways. For example, in certain cases, the extrasystole or tachycardia may occur during a previously detected MPA episode. In such a case, it may be desirable in step S106 to ter-

minate MPA data processing in step S118 as described below and ignore the accumulated MPA data set. Or, the physician may program step S 106 to declare the MPA episode terminated and process the MPA episode data set in step S120 in the manner described below.

[0048] The blood pressure samples over the heart cycle are made in step S108 and stored in a temporary buffer in step S110. The process repeats for each successive V-EVENT, and succeeding sampled peak blood pressure values are subtracted from one another and stored temporarily in a buffer on a FIFO basis in step S 112. Each determined pressure difference is immediately compared to a programmed MPA threshold in step S 114. The onset, the continuation, and the end of an MPA episode are declared in step S 116 as a result of each such comparison made in step S114. It will be understood that the MPA threshold used in step S114 resulting in a declaration of onset of an MPA episode may be different from the MPA threshold used in step S 114 after an MPA episode is declared to determine if the MPA episode is continuing or has ended. It will also be understood that a number of the pressure difference data stored in the buffer preceding declaration of onset and following declaration of MPA episode end may be used in succeeding steps S 118 and S120.

[0049] The processing of MPA episode data points is commenced in step S118 (depicted in FIG. 4) and continues for the duration of the MPA episode. The MPA episode may be terminated either by a subsequent failure to detect MPA in step S 116 or in response to an ectopic or tachycardia V-EVENT depending upon how such V-EVENTS are treated in step S106. First, it is determined whether the current detection of MPA in step S116 is the first one or is a continuing MPA detection during an earlier declared MPA episode by checking the MPA status flag in step S122.

[0050] If the MPA detection has just been declared in step S 116, then the MPA status flag is determined to not be ON in step S122, and steps S124 - S130 are performed to establish certain MPA characteristics of the newly detected MPA episode. An MPA episode count per unit of time, e.g., 24 hours, is incremented in step S124, and the MPA episode start time is stored in step S 126. The MPA onset heart rate and the MPA magnitudes of a certain number of heart cycles preceding detection of MPA onset stored in step S 112 are frozen in the buffer or transferred to a further buffer for processing as described further below. Then, the MPA status flag is set ON in step S 130, and the MPA magnitude determined in step S 112 is stored in step S 132.

[0051] Steps S124 - S130 are then bypassed at step S122 each time that a succeeding MPA magnitude continues to meet the MPA detection criteria in step S 118. In this way, the MPA data points comprising the MPA episode count and the MPA onset heart rate are established for the current MPA episode, and MPA magnitudes are accumulated for the duration of the MPA episode to determine one or more of average, mean, and maximal

MPA magnitude data points for the MPA episode.

[0052] The process of steps S100 - S132 repeats until the MPA detection criteria are not met and the MPA episode end is declared in step S 116. An MPA episode data set is accumulated, by the point in time that the MPA episode end is declared, that includes the MPA episode start time, the stored MPA magnitudes, and the MPA episode data points comprising the MPA episode count and the MPA onset heart rate for the current MPA episode. In step S120, depicted in FIG. 5, the MPA episode data set is completed and further processes are completed, if programmed ON, to assist in assessing the HF state.

[0053] First, the MPA status flag is checked in step S 134 and is turned OFF in step S 136 if the MPA status flag is set ON, as would have been done in step S130 for the current MPA episode. The bypass from step S 134 is simply provided to return to step S 100 in heart cycles when an MPA episode onset is not declared in step S116.

[0054] In step S 13 8, the stored MPA magnitudes of the concluded MPA episode are retrieved and processed to provide further MPA episode MPA magnitude data points that are stored with the MPA episode data set. In step S140, the MPA duration data point is determined from the MPA end time and the stored MPA start time and stored. In step S142, the MPA end heart rate data point is determined and stored. The completed MPA episode data set can be stored in IMD memory or UT transmitted to an external programmer 300, for example. The completed MPA episode data set can be further processed in step S 144 to derive an assessment of HF state for use in adjusting therapies, if necessary. Step S144 can be performed either in the IMD 100 or in the external programmer 300 or in remote processing equipment remote from programmer 300 and IMD 100 or in a collaboration of the IMD 100, the external programmer 300 and the remote processing equipment.

[0055] The determination of the MPA magnitude data point(s) in step S138 can be selectively programmed to include one or more of determination of: (1) the MPA magnitude rate of change at MPA onset; (2) the MPA magnitude rate of change at MPA end; (3) the maximal MPA magnitude; (4) the mean MPA magnitude; and (5) the average MPA magnitude. The MPA magnitude rate of change data point at MPA onset can be determined comparing the change in MPA magnitudes of set numbers of MPA magnitudes stored prior to and following MPA onset. Similarly, the MPA magnitude rate of change data point at MPA off can be determined comparing the change in MPA magnitudes of set numbers of MPA magnitudes stored prior to and following declaration of MPA end.

[0056] FIG. 7 is a graphical depiction one specific measure of the frequency of MPA, the "MPA Index", showing characteristic trends manifested by four HF patients. MPA episode data sets accumulated over time from acute readings of four patients having an IMD of the

type described above implanted. Data were collected at 2-3 week intervals. It is noted that three patients had stable values for MPA Index over time, and they were medically stable over the same time interval. However, one patient, patient #3, had an increasing MPA Index at each study period and then, after week X, had a worsening heart failure episode requiring hospitalization and intensive intervention.

[0057] Thus, it is demonstrated MPA episodes can be detected and that MPA characteristics of the MPA episode can be used alone or as a group as a diagnostic marker of HF state. The MPA episode data set can be stored in memory associated with a time and date stamp. The MPA characteristics of each MPA data set in a series of MPA data sets collected over time can be compared or plotted to determine if a trend indicative of change in HF state is discernible.

20 Claims

1. A system for operating an implantable heart monitor implanted in a patient's body having electrogram (EGM) sense electrodes coupled with EGM sense circuitry to generate sense events upon detection of cardiac depolarizations and a blood pressure measurement transducer disposed in a heart chamber and coupled with blood pressure measurement circuitry to assess heart failure state as a function of mechanical pulsus alternans (MPA) comprising:

means for operating the blood pressure measurement transducer to make blood pressure measurements;

means for detecting the onset of an MPA episode of the patient's heart from the blood pressure measurements; **characterized by** means for determining at least one MPA characteristic of the MPA episode suitable for assessing heart failure state.

2. The system of Claim 1, wherein the means for determining the at least one MPA characteristic further comprises means for determining an MPA onset heart rate associated with the detection of onset of the MPA episode.

3. The system of Claim 2 further comprising means for comparing a series of stored MPA onset heart rates to determine if the stored MPA onset heart rates exhibit an increasing heart rate trend signifying an improving heart failure state, a decreasing heart rate trend signifying a deteriorating heart failure state or a substantially unchanging heart rate trend signifying a stable heart failure state.

4. The system of claim 1 further comprising means for detecting the end of an MPA episode of the patient's

heart from the blood pressure measurements, and wherein the means for determining the at least one MPA characteristic further comprises means for determining an MPA end heart rate associated with the detection of the end of the MPA episode.

- 5
5. The system of Claim 4, further comprising means for comparing a series of stored MPA end heart rates to determine if the stored MPA end heart rates exhibit an increasing heart rate trend signifying an improving heart failure state, a decreasing heart rate trend signifying a deteriorating heart failure state or a substantially unchanging heart rate trend signifying a stable heart failure state.

- 10
6. The system of claim 1, wherein the means for determining the MPA characteristic further comprises:

15

means for determining the differences between the systolic peak blood pressures of two heart beats as MPA magnitudes; and

20

means for determining a maximal MPA magnitude data point from the determined MPA magnitudes.

7. The system of Claim 6, further comprising means for comparing a series of stored maximal MPA magnitude data points to determine if the stored maximal MPA magnitude data points exhibit a decreasing MPA magnitude trend signifying an improving heart failure state, an increasing MPA magnitude trend signifying a deteriorating heart failure state or a substantially unchanging MPA magnitude trend signifying a stable heart failure state.

- 30
8. The system of claim 1 wherein the means for determining the MPA characteristic further comprises:

35

means for determining the differences between the systolic peak blood pressures of two heart beats as MPA magnitudes; and

40

means for determining a mean MPA magnitude data point from the determined MPA magnitudes.

9. The system of Claim 8, further comprising means for comparing a series of stored mean MPA magnitude data points to determine if the stored mean MPA magnitude data points exhibit a decreasing MPA magnitude trend signifying an improving heart failure state, an increasing MPA magnitude trend signifying a deteriorating heart failure state or a substantially unchanging MPA magnitude trend signifying a stable heart failure state.

- 50
10. The system of Claim 1, wherein the means for determining the MPA characteristic further comprises:

means for determining the differences between the systolic peak blood pressures of two heart beats as MPA magnitudes; and

means for determining an average MPA magnitude data point from the determined MPA magnitudes.

11. The system of Claim 10, further comprising means for comparing a series of stored average MPA magnitude data points to determine if the stored average MPA magnitude data points exhibit a decreasing MPA magnitude trend signifying an improving heart failure state, an increasing MPA magnitude trend signifying a deteriorating heart failure state or a substantially unchanging MPA magnitude trend signifying a stable heart failure state.

12. The system of Claim 1, further comprising means for detecting the end of an MPA episode of the patient's heart from the blood pressure measurements, and wherein the means for determining the MPA characteristic comprises means for determining an MPA episode duration data point.

- 25
13. The system of Claim 1 further comprising means for comparing a series of stored MPA duration data points to determine if the stored MPA duration data points exhibit a decreasing MPA duration trend signifying an improving heart failure state, an increasing MPA duration trend signifying a deteriorating heart failure state or a substantially unchanging MPA duration trend signifying a stable heart failure state.

- 35
14. The system of Claim 1, wherein the means for determining the MPA characteristic further comprises:

means for determining the differences between the systolic peak blood pressures of two heart beats as MPA magnitudes; and

means for determining an MPA magnitude rate of change data point from the determined MPA magnitudes.

- 45
15. The system of Claim 14, further comprising means for comparing a series of stored MPA rate of change data points to determine if the stored MPA rate of change data points exhibit a decreasing MPA rate of change trend signifying an improving heart failure state, an increasing MPA rate of change trend signifying a deteriorating heart failure state, or a substantially unchanging MPA rate of change trend signifying a stable heart failure state.

55

Patentansprüche

1. System zum Betreiben eines im Körper eines Patienten implantierten implantierbaren Herzüberwa-

chungsgeräts bzw. -monitors mit Elektrogramm-(EGM-) Erfassungselektroden, die mit einer EGM-Erfassungsschaltung verbunden sind, zum Erzeugen von Erfassungsereignissen auf die Bestimmung von Herzdepolarisationen hin, und einem Blutdruckmeßtransducer, der in einer Herzkammer angeordnet ist und mit einer Blutdruckmeßschaltung zum Einschätzen bzw. Beurteilen eines Herzfehlerzustandes als einer Funktion des mechanischen Pulsus alternans (MPA) verbunden ist, das aufweist:

Mittel zum Betreiben des Blutdruckmeßtransducers, um Blutdruckmessungen zu machen bzw. durchzuführen;

Mittel zum Bestimmen des Einsetzens eines MPA-Abschnittes bzw. einer MPA-Episode des Herzens des Patienten aus den Blutdruckmessungen; **gekennzeichnet durch**

Mittel zum Bestimmen wenigstens eines MPA-Charakteristikums des MPA-Abschnitts, das zum Einschätzen des Herzfehlerzustandes geeignet ist.

2. System nach Anspruch 1, bei dem die Mittel zum Bestimmen des wenigstens einen MPA-Charakteristikums ferner Mittel zum Bestimmen einer MPA-Einsetzherzrate bzw. -frequenz, die der Bestimmung des Einsetzens des MPA-Abschnitts zugeordnet ist, aufweisen.
3. System nach Anspruch 2, das ferner Mittel zum Vergleichen einer Reihe gespeicherter MPA-Einsetzherzraten aufweist, um zu bestimmen, ob die gespeicherten MPA-Einsetzherzraten einen zunehmenden Herzfrequenztrend, der einen sich verbessernden Herzfehlerzustand anzeigt, einen abnehmenden Herzfrequenztrend, der einen sich verschlechternden Herzfehlerzustand anzeigt, oder einen sich im wesentlichen nicht verändernden Herzfrequenztrend, der einen stabilen Herzfehlerzustand anzeigt, aufweisen.
4. System nach Anspruch 1, das ferner Mittel zum Bestimmen des Endes eines MPA-Abschnitts des Herzens des Patienten aus den Blutdruckmessungen aufweist, und bei dem die Mittel zum Bestimmen des wenigstens einen MPA-Charakteristikums ferner Mittel zum Bestimmen einer MPA-Endherzfrequenz, die der Bestimmung des Endes des MPA-Abschnitts zugeordnet ist, aufweisen.
5. System nach Anspruch 4, das ferner Mittel zum Vergleichen einer Reihe gespeicherter MPA-Endherzfrequenzen aufweist, um zu bestimmen, ob die gespeicherten MPA-Endherzfrequenzen einen zunehmenden Herzfrequenztrend, der einen sich verbessernden Herzfehlerzustand anzeigt, einen abnehmenden Herzfrequenztrend, der einen sich ver-

schlechternden Herzfehlerzustand anzeigt, oder einen sich im wesentlichen nicht verändernden Herzfrequenztrend, der einen stabilen Herzfehlerzustand anzeigt, aufweisen.

6. System nach Anspruch 1, bei dem die Mittel zum Bestimmen des MPA-Charakteristikums ferner aufweisen:

Mittel zum Bestimmen der Unterschiede zwischen den Blutdrücken der systolischen Spitzen zweier Herzschläge als bzw. in Form von MPA-Größen; und

Mittel zum Bestimmen eines Datenpunktes einer maximalen MPA-Größe aus den bestimmten MPA-Größen.

7. System nach Anspruch 6, das ferner Mittel zum Vergleichen einer Reihe gespeicherter Datenpunkte maximaler MPA-Größen aufweist, um zu bestimmen, ob die gespeicherten Datenpunkte maximaler MPA-Größen einen abnehmenden MPA-Größentrend, der einen sich verbessernden Herzfehlerzustand anzeigt, einen zunehmenden MPA-Größentrend, der einen sich verschlechternden Herzfehlerzustand anzeigt, oder einen sich im wesentlichen nicht verändernden MPA-Größentrend, der einen stabilen Herzfehlerzustand anzeigt, aufweisen.

8. System nach Anspruch 1, bei dem die Mittel zum Bestimmen des MPA-Charakteristikums ferner aufweisen:

Mittel zum Bestimmen der Unterschiede zwischen den Blutdrücken der systolischen Spitzen zweier Herzschläge als MPA-Größen; und Mittel zum Bestimmen eines Datenpunktes einer mittleren bzw. medianen MPA-Größe aus den bestimmten MPA-Größen.

9. System nach Anspruch 8, das ferner Mittel zum Vergleichen einer Reihe gespeicherter Datenpunkte mittlerer MPA-Größen aufweist, um zu bestimmen, ob die gespeicherten Datenpunkte mittlerer MPA-Größen einen abnehmenden MPA-Größentrend, der einen sich verbessernden Herzfehlerzustand anzeigt, einen zunehmenden MPA-Größentrend, der einen sich verschlechternden Herzfehlerzustand anzeigt, oder einen sich im wesentlichen nicht verändernden MPA-Größentrend, der einen stabilen Herzfehlerzustand anzeigt, aufweisen.

10. System nach Anspruch 1, bei dem die Mittel zum Bestimmen des MPA-Charakteristikums ferner aufweisen:

Mittel zum Bestimmen der Unterschiede zwischen den Blutdrücken der systolischen Spitzen

zweier Herzschläge als MPA-Größen; und Mittel zum Bestimmen eines Datenpunktes einer durchschnittlichen MPA-Größe aus den bestimmten MPA-Größen.

11. System nach Anspruch 10, das ferner Mittel zum Vergleichen einer Reihe gespeicherter Datenpunkte durchschnittlicher MPA-Größen aufweist, um zu bestimmen, ob die gespeicherten Datenpunkte durchschnittlicher MPA-Größen einen abnehmenden MPA-Größentrend, der einen sich verbessernden Herzfehlerzustand anzeigt, einen zunehmenden MPA-Größentrend, der einen sich verschlechternden Herzfehlerzustand anzeigt, oder einen sich im wesentlichen nicht verändernden MPA-Größentrend, der einen stabilen Herzfehlerzustand anzeigt, aufweisen.

12. System nach Anspruch 1, das ferner Mittel zum Bestimmen des Endes eines MPA-Abschnittes des Herzens des Patienten aus den Blutdruckmessungen aufweist, und bei dem die Mittel zum Bestimmen des MPA-Charakteristikums Mittel zum Bestimmen eines Datenpunktes einer MPA-Abschnittsdauer aufweisen.

13. System nach Anspruch 1, das ferner Mittel zum Vergleichen einer Reihe gespeicherter Datenpunkte der MPA-Dauer aufweist, um zu bestimmen, ob die Datenpunkte der gespeicherten MPA-Dauer einen abnehmenden Trend der MPA-Dauer, der einen sich verbessernden Herzfehlerzustand anzeigt, einen zunehmenden Trend der MPA-Dauer, der einen sich verschlechternden Herzfehlerzustand anzeigt, oder einen sich im Wesentlichen nicht veränderten Trend der MPA-Dauer, der einen stabilen Herzfehlerzustand anzeigt, aufweisen.

14. System nach Anspruch 1, bei dem die Mittel zum Bestimmen des MPA-Charakteristikums ferner aufweisen:

Mittel zum Bestimmen der Unterschiede zwischen den Blutdrücken der systolischen Spitzen zweier Herzschläge als MPA-Größen; und Mittel zum Bestimmen eines Datenpunktes einer MPA-Änderungsrate aus den bestimmten MPA-Größen.

15. System nach Anspruch 14, das ferner Mittel zum Vergleichen einer Reihe gespeicherter Datenpunkte der MPA-Änderungsfrequenz aufweist, um zu bestimmen, ob die gespeicherten Datenpunkte der MPA-Änderungsfrequenz einen abnehmenden Trend der MPA-Änderungsfrequenz, der einen sich verbessernden Herzfehlerzustand anzeigt, einen zunehmenden Trend der MPA-Änderungsfrequenz, der einen sich verschlechternden Herzzustand an-

zeigt, oder einen sich im wesentlichen nicht verändernden Trend der MPA-Änderungsfrequenz, der einen stabilen Herzfehlerzustand anzeigt, aufweisen.

5

Revendications

1. Système pour actionner un moniteur cardiaque implantable implanté dans le corps d'un patient, ayant des électrodes de détection d'électrogramme (EGM) couplées à des circuits de détection d'EGM pour générer des événements de détection lors la détection de dépolarisations cardiaques, et un transducteur de mesure de pression sanguine disposé dans une chambre cardiaque et couplé à des circuits de mesure de pression sanguine pour évaluer un état d'insuffisance cardiaque en fonction de l'alternance mécanique du pouls (MPA), comportant :

des moyens pour actionner le transducteur de mesure de pression sanguine pour réaliser des mesures de pression sanguine ;
des moyens pour détecter le début d'un épisode MPA du coeur du patient à partir des mesures de pression sanguine ;

caractérisé par

des moyens pour déterminer au moins une caractéristique MPA de l'épisode MPA adaptée pour évaluer l'état d'insuffisance ou de déficience cardiaque.

2. Système selon la revendication 1, dans lequel les moyens pour déterminer la au moins une caractéristique MPA comportent également des moyens pour déterminer une fréquence cardiaque de début de MPA associée à la détection du début de l'épisode MPA.

3. Système selon la revendication 2, comportant en outre des moyens pour comparer une série de fréquences cardiaques de début de MPA mémorisées pour déterminer si les fréquences cardiaques de début de MPA mémorisées présentent une tendance à l'augmentation de la fréquence cardiaque indiquant un état d'insuffisance cardiaque qui s'améliore, une tendance à la diminution de la fréquence cardiaque indiquant un état d'insuffisance cardiaque qui se détériore, ou une tendance sensiblement inchangée de la fréquence cardiaque indiquant un état d'insuffisance cardiaque stable.

4. Système selon la revendication 1, comportant également des moyens pour détecter la fin d'un épisode MPA du coeur du patient à partir des mesures de pression sanguine, et dans lequel les moyens pour déterminer la au moins une caractéristique MPA comportent également des moyens pour déterminer la fréquence cardiaque de fin de MPA associée à la

détection de la fin de l'épisode MPA.

5. Système selon la revendication 4, comportant en outre des moyens pour comparer une série de fréquences cardiaques de fin de MPA mémorisées pour déterminer si les fréquences cardiaques de fin de MPA mémorisées présentent une tendance à l'augmentation de la fréquence cardiaque indiquant un état d'insuffisance cardiaque qui s'améliore, une tendance à la diminution de la fréquence cardiaque indiquant un état d'insuffisance cardiaque qui se détériore, ou une tendance sensiblement inchangée de la fréquence cardiaque indiquant un état d'insuffisance cardiaque stable.

6. Système selon la revendication 1, dans lequel les moyens pour déterminer la caractéristique MPA comportent en outre :

des moyens pour déterminer les différences entre les pressions sanguines de pic systolique de deux battements du coeur en tant que grandeurs MPA ; et

des moyens pour déterminer un point de données de grandeur MPA maximale à partir des grandeurs MPA déterminées.

7. Système selon la revendication 6, comportant également des moyens pour comparer une série de points de données mémorisés concernant la grandeur MPA maximale pour déterminer si les points de données de grandeur MPA maximale mémorisés présentent une tendance à la diminution de la grandeur MPA indiquant un état d'insuffisance cardiaque qui s'améliore, une tendance à l'augmentation de la grandeur MPA indiquant un état d'insuffisance cardiaque qui se détériore, ou une tendance sensiblement inchangée de la grandeur MPA indiquant un état d'insuffisance cardiaque stable.

8. Système selon la revendication 1, dans lequel les moyens pour déterminer la caractéristique MPA comportent en outre :

des moyens pour déterminer les différences entre les pressions sanguines de pic systolique de deux battements du coeur en tant que grandeurs MPA ; et

des moyens pour déterminer un point de données de grandeur MPA moyenne (mean) à partir des grandeurs MPA déterminées.

9. Système selon la revendication 8, comportant en outre des moyens pour comparer une série de points de données mémorisés concernant la grandeur MPA moyenne pour déterminer si les points de données de grandeur MPA moyenne mémorisés présentent une tendance à la diminution de la grandeur

MPA indiquant un état d'insuffisance cardiaque qui s'améliore, une tendance à l'augmentation de la grandeur MPA indiquant un état d'insuffisance cardiaque qui se détériore, ou une tendance sensiblement inchangée de la grandeur MPA indiquant un état d'insuffisance cardiaque stable.

10. Système selon la revendication 1, dans lequel les moyens pour déterminer la caractéristique MPA comportent en outre :

des moyens pour déterminer les différences entre les pressions sanguines de pic systolique de deux battements du coeur en tant que grandeurs MPA ; et

des moyens pour déterminer un point de données de grandeur MPA moyenne (average) à partir des grandeurs MPA déterminées.

11. Système selon la revendication 10, comportant également des moyens pour comparer une série de points de données mémorisés concernant la grandeur MPA moyenne pour déterminer si les points de données de grandeur MPA moyenne mémorisés présentent une tendance à la diminution de la grandeur MPA indiquant un état d'insuffisance cardiaque qui s'améliore, une tendance à l'augmentation de la grandeur MPA indiquant un état d'insuffisance cardiaque qui se détériore, ou une tendance sensiblement inchangée de la grandeur MPA indiquant un état d'insuffisance cardiaque stable.

12. Système selon la revendication 1, comportant en outre des moyens pour détecter la fin d'un épisode MPA du coeur du patient à partir des mesures de pression sanguine, et dans lequel les moyens pour déterminer la caractéristique MPA comportent des moyens pour déterminer un point de données de durée d'épisode MPA.

13. Système selon la revendication 1, comportant en outre des moyens pour comparer une série de points de données mémorisés concernant la durée MPA pour déterminer si les points de données de durée MPA mémorisés présentent une tendance à la diminution de la durée MPA indiquant un état d'insuffisance cardiaque qui s'améliore, une tendance à l'augmentation de la durée MPA indiquant un état d'insuffisance cardiaque qui se détériore, ou une tendance sensiblement inchangée de la durée MPA indiquant un état d'insuffisance cardiaque stable.

14. Système selon la revendication 1, dans lequel les moyens pour déterminer la caractéristique MPA comportent également :

des moyens pour déterminer les différences entre les pressions sanguines de pic systolique de

deux battements du coeur en tant que grandeurs MPA ; et des moyens pour déterminer un point de données de vitesse de variation de grandeur MPA à partir des grandeurs MPA déterminées.

5

15. Système selon la revendication 14, comportant en outre des moyens pour comparer une série de points de données mémorisés concernant la vitesse de variation de MPA pour déterminer si les points de données de vitesse de variation de MPA mémorisés présentent une tendance à la diminution de la vitesse de variation de MPA indiquant un état d'insuffisance cardiaque qui s'améliore, une tendance à l'augmentation de la vitesse de variation de MPA indiquant un état d'insuffisance cardiaque qui se détériore, ou une tendance sensiblement inchangée de la vitesse de variation de MPA indiquant un état d'insuffisance cardiaque stable.

10

15

20

25

30

35

40

45

50

55

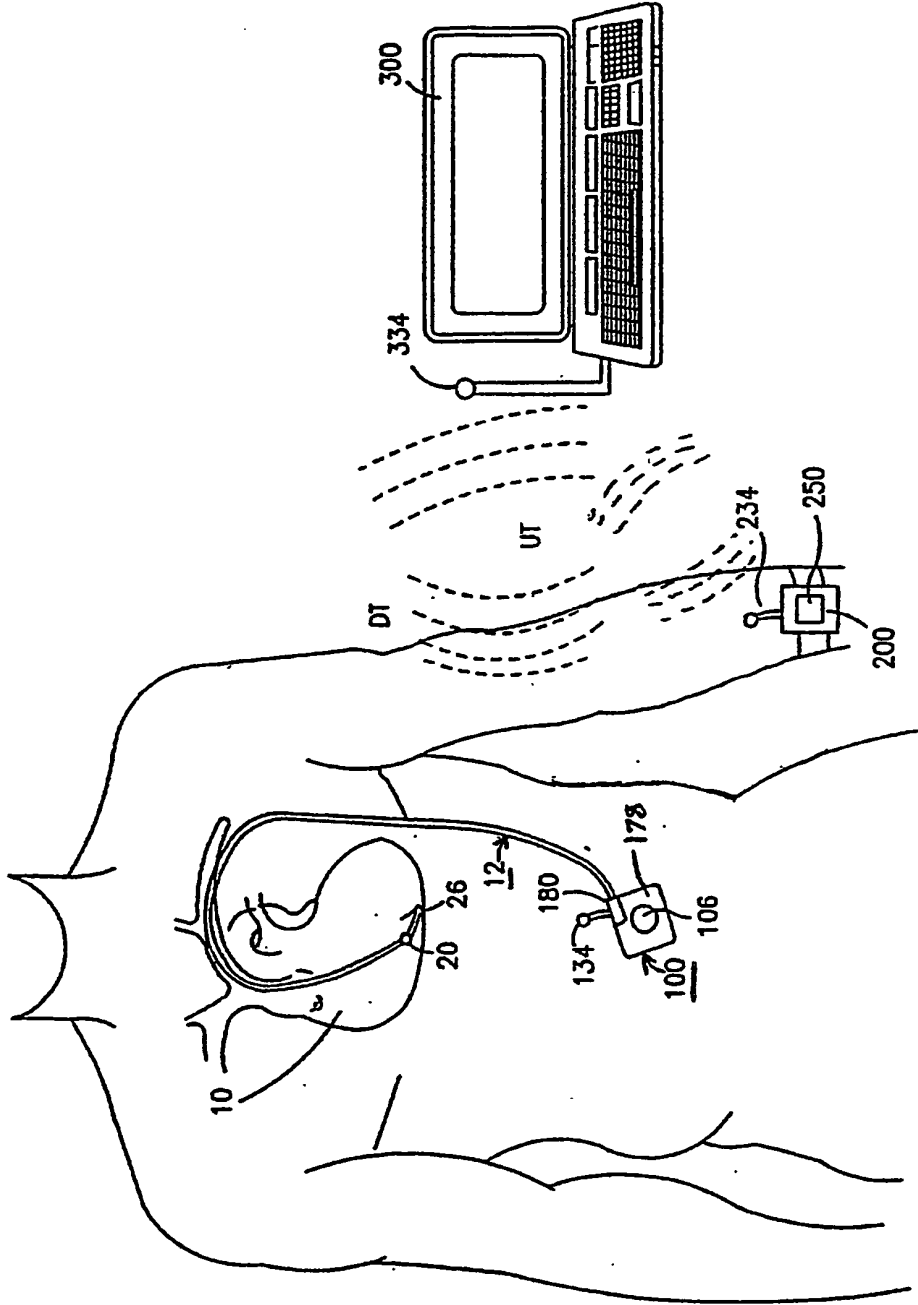


FIG. 1

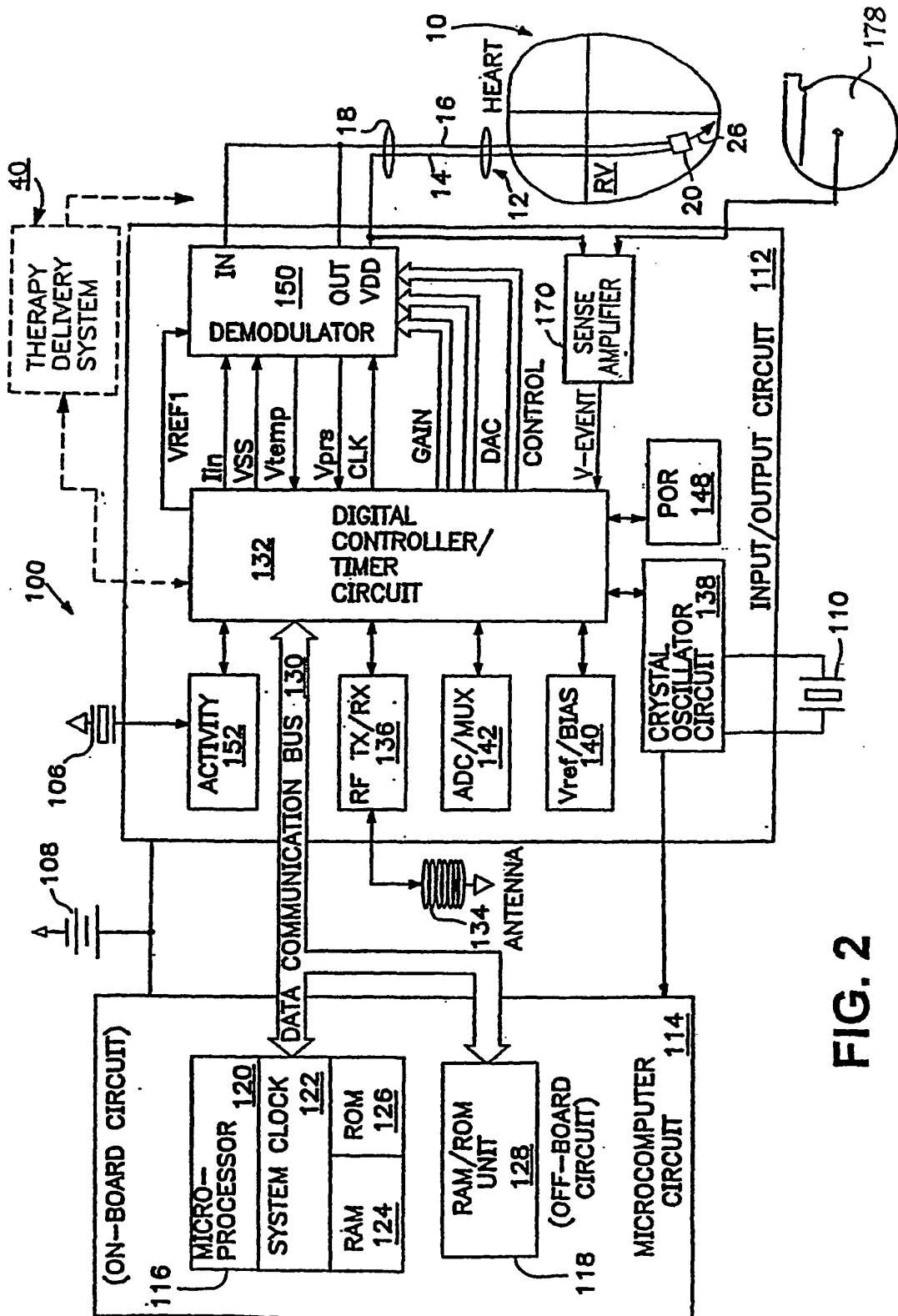


FIG. 2

FIG. 3

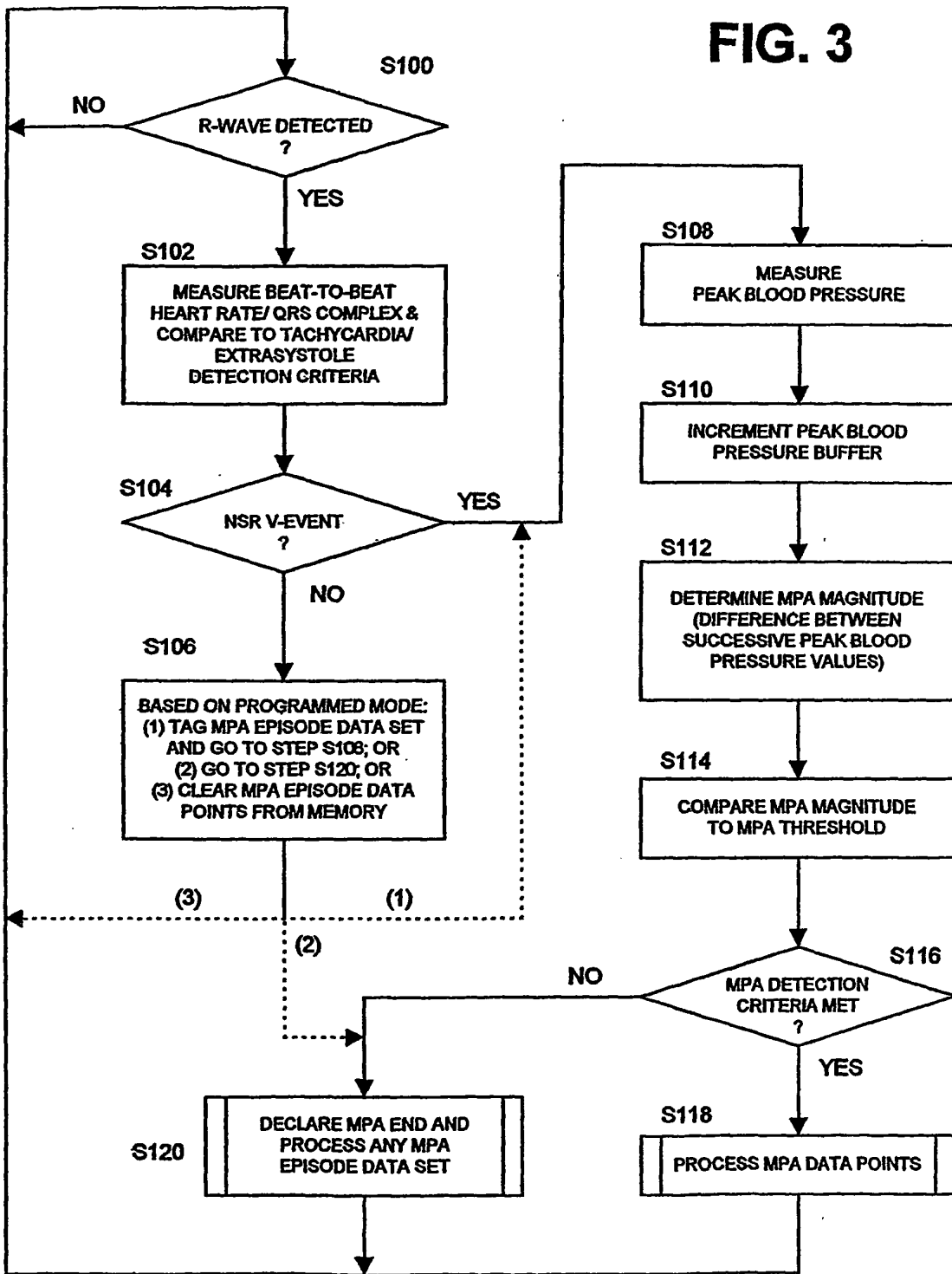


FIG. 4

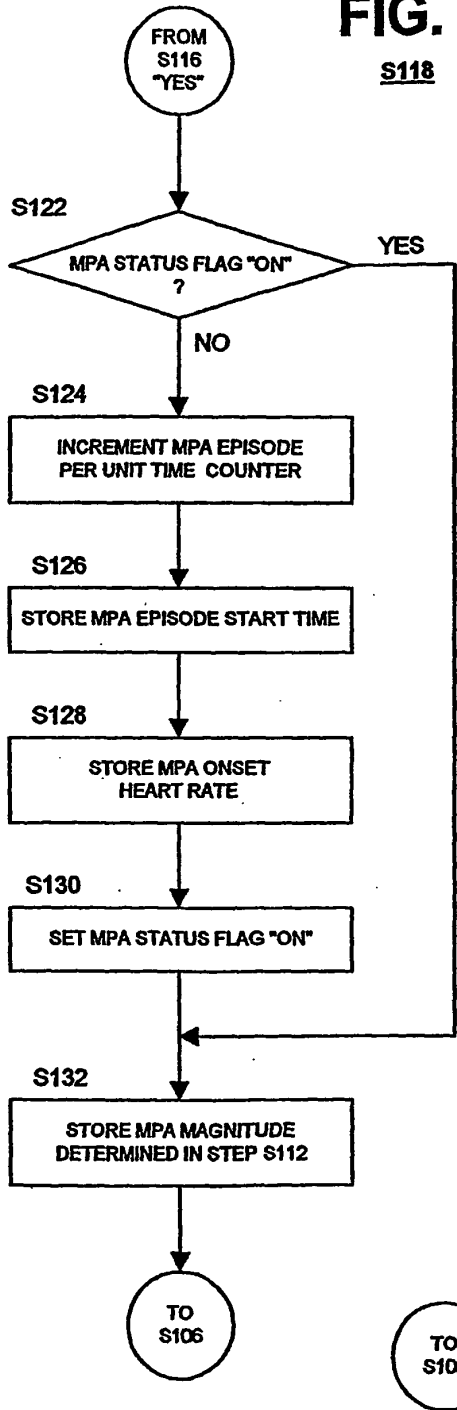
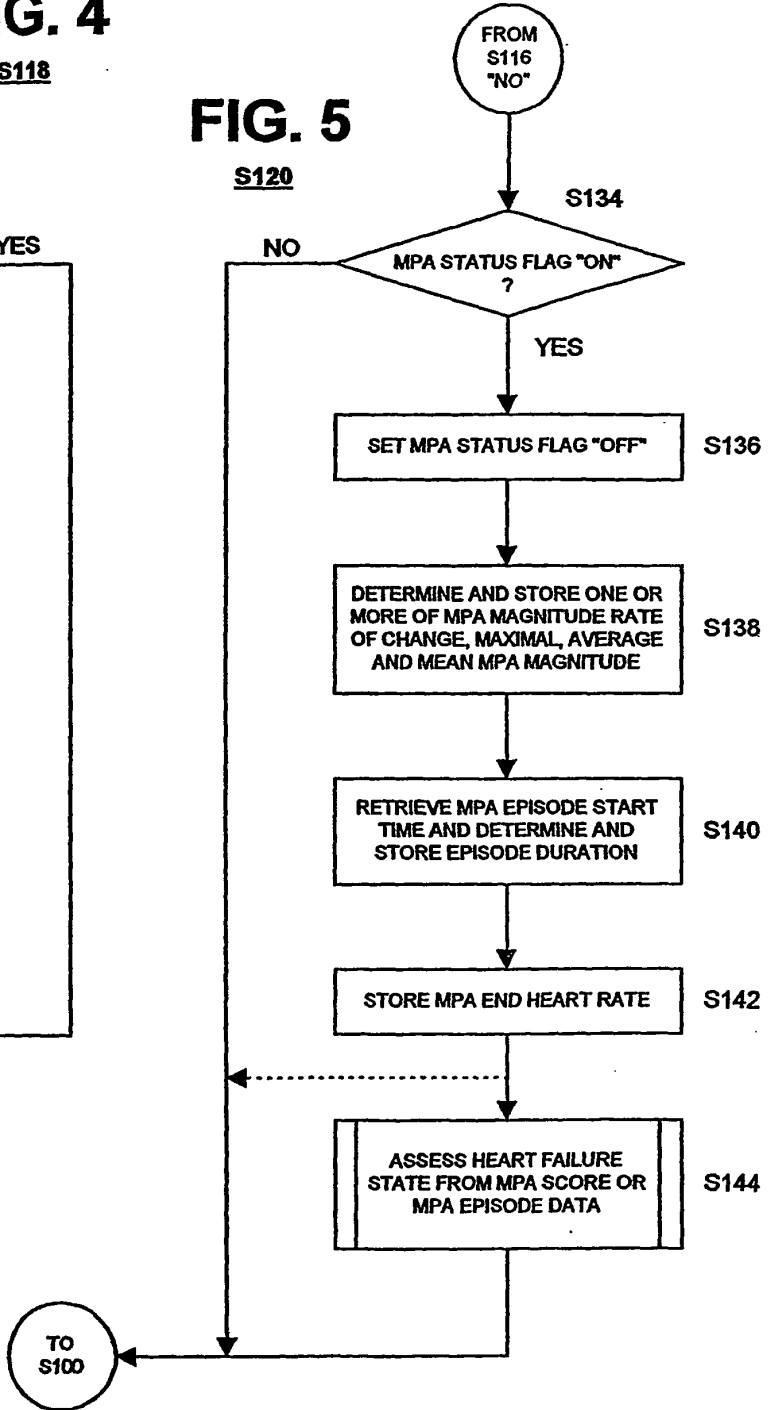


FIG. 5



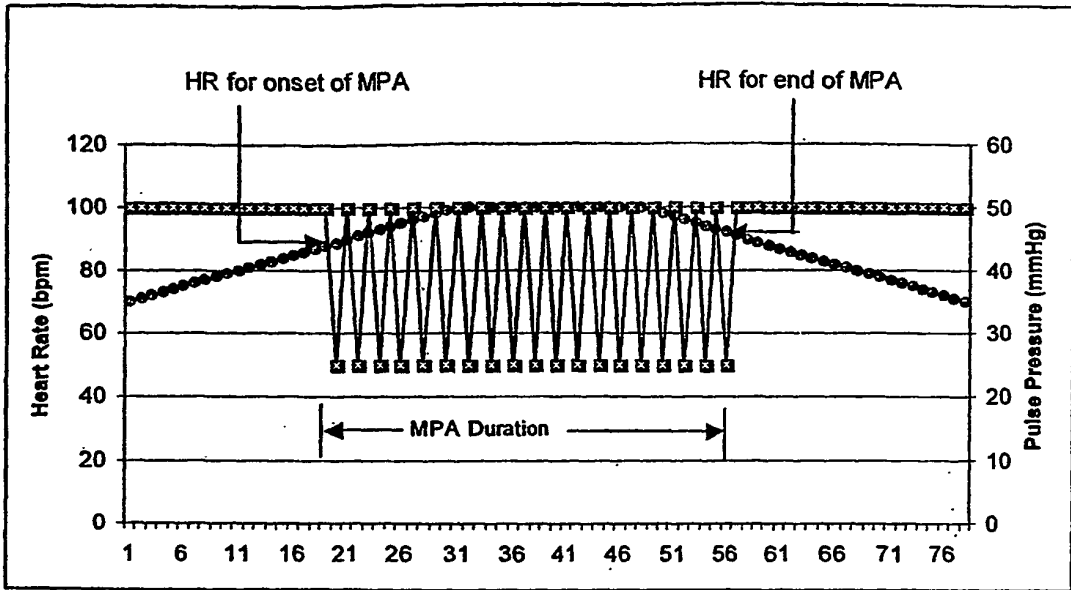


FIG. 6

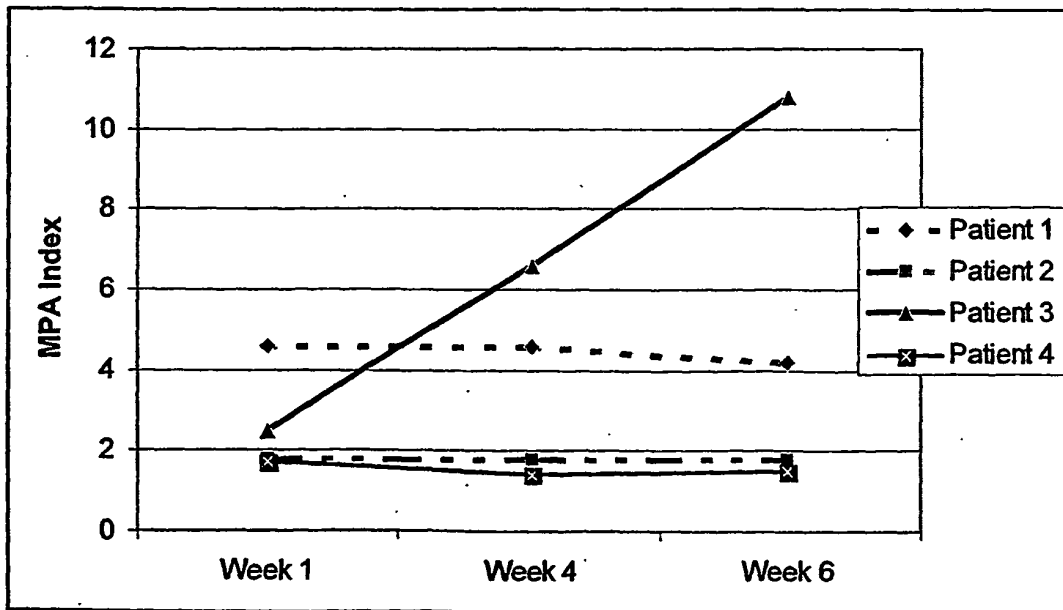


FIG. 7

REFERENCES CITED IN THE DESCRIPTION

This list of references cited by the applicant is for the reader's convenience only. It does not form part of the European patent document. Even though great care has been taken in compiling the references, errors or omissions cannot be excluded and the EPO disclaims all liability in this regard.

Patent documents cited in the description

- US 5265617 A [0009]
- US 6253107 B [0011]
- US 5921940 A [0015]
- US 5564434 A [0029]
- US 5904708 A [0030]

Non-patent literature cited in the description

- **HUNT et al.** ACC/AHA guidelines for the evaluation and management of chronic heart failure in the adult: executive summary. *J Am Coll Cardiol*, 2001, vol. 38 (7), 2101-2113 [0002]
- **KODAMA et al.** Mechanical Alternans in Patients with Chronic Heart Failure. *J Card Fail*, 2001, vol. 7 (2), 138-145 [0003]
- **KODAMA et al.** Changes in the Occurrence of Mechanical Alternans after Long-term Beta-blocker Therapy in Patients with Chronic Heart Failure. *Jpn Circ J*, 2001, vol. 65 (8), 711-716 [0003]
- **SURAWICZ et al.** Cardiac Alternans: Diverse Mechanisms and Clinical Manifestations. *J. Am Coll Cardiol*, 1992, vol. 20 (2), 483-499 [0003]
- **FREEMAN et al.** An Evaluation of Pulsus Alternans in Closed-chest Dogs. *Am J Physiol*, 1992, vol. 262 (2), H278-H284 [0005]
- **ALBRECHT ; COHEN.** Predicting sudden cardiac death from T wave alternans of the surface electrocardiogram: promise and pitfalls. *Journal of Cardiovascular Electrophysiology*, November 1996, vol. 7 (11), 1095-1111 [0009]
- **CLANCY ; SMITH ; COHEN.** A simple electrical-mechanical model of the heart applied to the study of electrical-mechanical alternans. *IEEE Transactions on Biomedical Engineering*, June 1991, vol. 38 (6), 551-60 [0011]

专利名称(译)	用于评估心力衰竭的植入式医疗设备		
公开(公告)号	EP1599132B1	公开(公告)日	2008-08-13
申请号	EP2004712354	申请日	2004-02-18
[标]申请(专利权)人(译)	美敦力公司		
申请(专利权)人(译)	美敦力公司.		
当前申请(专利权)人(译)	美敦力公司.		
[标]发明人	BENNETT TOMMY D DUFFIN EDWIN G MULLIGAN LAWRENCE J HAMLEN ROBERT C ABO AUDA WAEL		
发明人	BENNETT, TOMMY, D. DUFFIN, EDWIN, G. MULLIGAN, LAWRENCE, J. HAMLEN, ROBERT, C. ABO-AUDA, WAEL		
IPC分类号	A61B5/02 A61B5/04 A61B5/00 A61B5/0215 A61B5/0245 A61B5/0452		
CPC分类号	A61B5/02405 A61B5/0031 A61B5/0215 A61B5/0245 A61B5/0452		
优先权	10/368278 2003-02-18 US		
其他公开文献	EP1599132A2		
外部链接	Espacenet		

摘要(译)

植入患者体内的植入式心脏监测器 (100) 具有心电图 (EGM) 感测电极 (26) , 其与EGM感测电路 (112) 耦合以产生感测事件 (S100) 和设置在心脏中的血压测量变换器 (20) 腔室 (10) 并且与血压测量电路 (112) 耦合, 用于评估作为机械脉冲交替 (MPA) 的函数的心力衰竭状态 (S144) 。检测MPA发作 (S116) , 并且MPA发作的MPA特征单独使用或作为一组用作HF状态的诊断标记。 MPA数据集数据集可以存储在 与时间和日期戳相关联的存储器 (124,128) 中。可以比较或绘制在一段时间内收集的一系列MPA数据集集中的每个MPA数据集的MPA特性, 以确定指示HF状态变化的趋势是否是可辨别的。

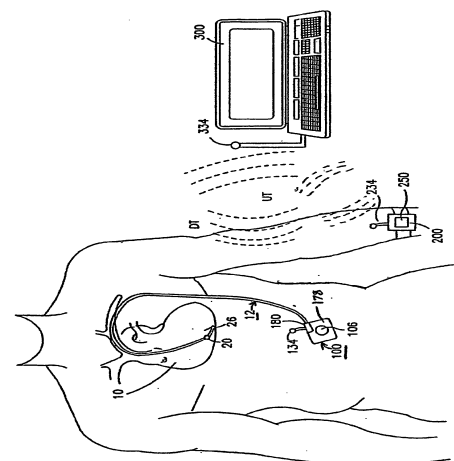


FIG. 1