



(11) **EP 2 957 226 B1**

(12) **EUROPEAN PATENT SPECIFICATION**

(45) Date of publication and mention of the grant of the patent:  
**12.06.2019 Bulletin 2019/24**

(51) Int Cl.:  
**A61B 5/024** <sup>(2006.01)</sup> **G06F 19/00** <sup>(2018.01)</sup>  
**A61B 5/00** <sup>(2006.01)</sup> **A61B 5/0205** <sup>(2006.01)</sup>  
**A61B 5/0452** <sup>(2006.01)</sup> **A61B 5/08** <sup>(2006.01)</sup>

(21) Application number: **14002124.7**

(22) Date of filing: **20.06.2014**

(54) **Method and device for assessing a mortality risk of a cardiac patient based on respiratory sinus arrhythmia**

Verfahren und Vorrichtung zur Beurteilung des Sterberisikos eines Herzpatienten basierend auf der respiratorischen Sinusarrhythmie

Procédé et dispositif pour évaluer un risque de mortalité d'un patient cardiaque sur la base d'arythmie respiratoire

(84) Designated Contracting States:  
**AL AT BE BG CH CY CZ DE DK EE ES FI FR GB GR HR HU IE IS IT LI LT LU LV MC MK MT NL NO PL PT RO RS SE SI SK SM TR**

(43) Date of publication of application:  
**23.12.2015 Bulletin 2015/52**

(73) Proprietor: **Schmidt, Georg**  
**81675 München (DE)**

(72) Inventor: **Schmidt, Georg**  
**81675 München (DE)**

(74) Representative: **Grünecker Patent- und Rechtsanwälte PartG mbB Leopoldstraße 4 80802 München (DE)**

(56) References cited:  
**US-A1- 2004 127 804 US-A1- 2008 071 317**  
**US-A1- 2012 197 091 US-A1- 2013 310 654**

- **ECO J.C. DE GEUS ET AL: "Ambulatory measurement of respiratory sinus arrhythmia and respiration rate", BIOLOGICAL PSYCHOLOGY, vol. 41, no. 3, 1 November 1995 (1995-11-01), pages 205-227, XP055158244, ISSN: 0301-0511, DOI: 10.1016/0301-0511(95)05137-6**
- **MASI ET AL: "Respiratory sinus arrhythmia and diseases of aging: Obesity, diabetes mellitus, and hypertension", BIOLOGICAL PSYCHOLOGY, NORTH-HOLLAND PUB., AMSTERDAM, NL, vol. 74, no. 2, 27 December 2006 (2006-12-27), pages 212-223, XP005828751, ISSN: 0301-0511**
- **SCHMIDT GEORG ET AL: "RESPIRATORY SINUS ARRHYTHMIA PREDICTS MORTALITY AFTER MYOCARDIAL INFARCTION", JOURNAL OF THE AMERICAN COLLEGE OF CARDIOLOGY, vol. 63, no. 12, 1 April 2014 (2014-04-01), XP028599672, ISSN: 0735-1097, DOI: 10.1016/S0735-1097(14)60240-0**

Note: Within nine months of the publication of the mention of the grant of the European patent in the European Patent Bulletin, any person may give notice to the European Patent Office of opposition to that patent, in accordance with the Implementing Regulations. Notice of opposition shall not be deemed to have been filed until the opposition fee has been paid. (Art. 99(1) European Patent Convention).

**EP 2 957 226 B1**

**Description**

**[0001]** The present invention relates to cardiology in general and in particular to a method and device for assessing a mortality risk of a cardiac patient such as a post-myocardial infarction patient based on respiratory sinus arrhythmia.

**[0002]** Depending on the outcome of a mortality risk assessment, a specific medical treatment may be administered to the post-myocardial infarction patient. In view of the financial resources available for patients in statutory and private health insurance systems, there is an economical interest in administering specific and costly medical treatment predominantly to those post-myocardial infarction patients who can benefit most from such treatment. Conventional cardiac mortality risk predictors such as LVEF (< 35%), Diabetes mellitus, GRACE score ( $\geq$  120 points) and presence of chronic obstructive pulmonary disease (COPD) are available, but involve considerable efforts for measurement or calculation from patient and health personnel.

**[0003]** Assessment of respiratory sinus arrhythmia (RSA) is known from US-2004/127804-A1, US-2013/310654-A1, US-2012/197091 -A1, US-2008/071317-A1, as well as from

ECO J.C. DE GEUS ET AL: "Ambulatory measurement of respiratory sinus arrhythmia and respiration rate", BIOLOGICAL PSYCHOLOGY, vol. 41, no. 3, November 1995, pages 205-227, ISSN: 0301-0511, DOI: 10.1016/0301-0511(95)05137-6, and

MASI ET AL: "Respiratory sinus arrhythmia and diseases of aging: Obesity, diabetes mellitus, and hypertension", BIOLOGICAL PSYCHOLOGY, NORTH-HOLLAND PUB, vol. 74, no. 2, 27 December 2006, pages 212-223, ISSN: 0301-0511.

**[0004]** SCHMIDT GEORG ET AL: "RESPIRATORY SINUS ARRHYTHMIA PREDICTS MORTALITY AFTER MYOCARDIAL INFARCTION", JOURNAL OF THE AMERICAN COLLEGE OF CARDIOLOGY, vol. 63, no. 12, SSN: 0735-1097, DOI: 10.1016/S0735-1097(14)60240-0, shows assessment of RSA by phase-rectified signal averaging and association of RSA with mortality.

**[0005]** Therefore, there is a need for a high reliability mortality risk prediction method and device while minimizing the efforts to be taken by the patient and health personnel as well as the patient's possibility to manipulate the measurement results.

**[0006]** In order to solve the above identified problem, the invention provides, as a first aspect, a method for assessing a mortality risk of a cardiac patient according to claim 1.

**[0007]** Respiratory sinus arrhythmia (RSA) is a naturally occurring variation in heart rate that occurs during a breathing cycle. RSA is also a measure of parasympathetic nervous system activity.

**[0008]** During the process of RSA inhalation, vagal activity is temporarily suppressed, causing an immediate increase in heart rate. Exhalation then decreases the heart rate and causes vagal activity to resume. The process of measuring periodic changes in the heart rate during a resting state of cardiovascular activity is known as heart rate variability (HRV).

**[0009]** Now, the inventors of the present invention found that RSA may not only be used as a reference for vagal activity of a patient but also classifies as a reliable mortality risk predictor and is comparably easy to calculate on the basis of standard medical recordings.

**[0010]** On an electrocardiogram (ECG), RSA is seen as subtle changes in the R-R interval (time between two of the distinctive, large, upward "R" spikes on an electrocardiogram) synchronized with respiration. The R-R interval (RRI) on an ECG is shortened during inhalation and prolonged during exhalation.

**[0011]** Typically, RSA decreases with age. However, adults in cardiovascular health are likely to have a more pronounced RSA. Professional athletes typically maintain very high vagal tone and RSA levels. RSA also becomes less prominent in individuals with diabetes and cardiovascular disease. Meditation and relaxed breathing techniques can temporarily alter RSA.

**[0012]** Preferred embodiments are claimed in the subclaims.

**[0013]** According to another aspect of the invention, Step A further comprises at least one of the following sub-steps:

- Step A1: Obtaining electrocardiogram recordings of said patient, preferably using an ECG-recorder having X, Y, Z-leads and/or signal resolution of 1.6 kHz and 16 Bit, wherein said electrocardiogram-recordings are more preferably made in digital form, preferably for at least 30 minutes.
- Step A2: Identifying QRS-complexes from electrocardiogram-recordings of said patient.
- Step A3: Calculating the heartbeat intervals as the periods of time between subsequent two R-peaks of QRS-complexes from electrocardiogram-recordings of said patient.
- Step A5: Determining periodic data points based on said time series for a plurality of breathing cycles of said patient, said data points preferably representing starting times of inhalation and/or exhalation.

- Step A6: Identifying the heartbeat interval +matching to at least one of said data points.
- Step A7: Calculating a first mean heartbeat interval from at least two consecutive heartbeat intervals prior to at least one of said data points, said first mean heartbeat interval preferably representing a mean heartbeat interval during inhalation or exhalation.
- Step A8: Calculating a second mean heartbeat interval from at least two consecutive heartbeat intervals subsequent to the heartbeat intervals used for calculating the first mean heartbeat interval, said second mean heartbeat interval preferably representing a mean heartbeat interval during exhalation or inhalation.
- Step A9: Calculating the respiratory sinus arrhythmia for one breathing cycle of said patient by computing a difference and/or a quotient between said first and second heartbeat intervals for at least one of said data points.
- Step A10: Calculating mean respiratory sinus arrhythmia of said patient by computing the average of the respiratory sinus arrhythmia according to Step A9 for a plurality of said data points.

**[0014]** Step B further comprises the following sub-steps:

- Step B1: Allocating said patient to a low-mortality-risk group in case the mean respiratory sinus arrhythmia calculated for said patient indicates that the heartbeat intervals are decreasing during inhalation and/or increasing during exhalation.
- Step B2: Allocating said patient to a high-mortality-risk group in case the mean respiratory sinus arrhythmia calculated for said patient indicates that the heartbeat intervals are stable or increasing during inhalation and/or decreasing during exhalation.
- Step B3: Outputting the result of risk stratification based on the results of Step B1 and/or Step B2.

**[0015]** The invention further provides a computer-readable medium containing a program, which, when loaded, performs a method for assessing a mortality risk of a cardiac patient according to one of the preceding aspects.

**[0016]** The invention still further provides a device for assessing a mortality risk of a cardiac patient based on respiratory sinus arrhythmia, said device being configured to perform the method according to one of the preceding aspects.

**[0017]** Further preferred embodiments of the invention result from any possible combination of the features disclosed in the claims, description and drawings.

### Detailed description of the drawings

**[0018]**

Figure 1 visualizes the principle of high-pass-filtering of an ECG recording of a cardiac patient for obtaining a time series representing respiratory activity of said patient.

Figure 2 shows simultaneous recordings of respiratory chest movement (upper tracing) and ECG (lower tracing) for determination of data points representing periodic events during a plurality of breathing cycles of said patient.

Figure 3: exemplifies the calculation of the respiratory sinus arrhythmia (RSA) for one breathing cycle of a patient to be allocated to a low-mortality-risk group ("survivor") on the basis of the calculation.

Figure 4: exemplifies the calculation of the respiratory sinus arrhythmia (RSA) for one breathing cycle of a patient to be allocated to a high-mortality-risk group ("non-survivor") on the basis of the calculation.

Figure 5: visualizes mortality risk stratification of a study population by  $H > 0$  and  $\leq 0$  in all patients (upper panel), in patients with a GRACE score  $< 120$  (lower left panel) and in patients with a GRACE score  $\leq 120$  (lower right panel).

### Description of embodiments

**[0019]** The preferred embodiment of the invention will now be described with reference to the enclosed drawings:

The preferred method for assessing a mortality risk of a cardiac patient is based on respiratory sinus arrhythmia and is performed using an appropriate device such as a computer. The method comprises the following steps:

In Step A, the mean respiratory sinus arrhythmia during exhalation is computed over a plurality of breathing cycles of said patient. The invention also works with the computation of the mean respiratory sinus arrhythmia during inhalation, however, the computation of the mean respiratory sinus arrhythmia during exhalation is preferred.

Step A involves the following sub-steps:

**[0020]** In Step A1, electrocardiogram (ECG) recordings of said patient are obtained for a period of time of about 30 minutes. ECG recording is usually performed in digital form using a digital ECG-recorder having X, Y, Z-leads, a signal resolution of 1.6 kHz and 16 Bit.

**[0021]** Subsequently, in Step A2, QRS-complexes are identified from said ECG-recordings. The heartbeat intervals are calculated as the periods of time between subsequent two R-peaks of QRS-complexes in Step A3. The data series produced in Steps A2 and A3 contains the time durations of a plurality of consecutive heartbeat intervals detected in said ECG-recordings. If desired, specific data sequences can be selected and/or omitted for further processing in case the ECG-recordings have been interrupted or disturbed or certain data sequences are not useful for other reasons.

**[0022]** Step A4 aims for obtaining a time series representing the respiratory activity of said patient, which can be achieved in various ways. As the patient's respiratory activity is already contained in the electrocardiogram-recordings of said patient, it may be extracted by high-pass filtering of the electrocardiogram-recordings, as disclosed, e.g., by Barthel et al., European Heart Journal, 2013, Dommasch et al., JACC 2014. The muscular contraction of the patient during breathing creates minute electrical potentials which are visible in the ECG recordings. If filtered through a high pass filter, the time series indicating the respiratory activity can be obtained from the ECG recordings as shown in Fig. 1 (lower tracing). The time series indicates respiratory chest movement. As shown in the upper tracing in Figure 2, the plotted digital recording of respiratory activity of said patient shows a sinus curve for each breathing cycle with characteristic features during inhalation and exhalation. These characteristic features are taken as a reference for distinction of the different phases of each breathing cycle. In Step A5, periodic data points for each one of a plurality of breathing cycles of said patient are determined based on said digital time series. Preferably, data points representing the starting times of exhalation are selected. In general, the data points representing the starting times of exhalation are local extreme values of the time series representing the respiratory activity of said patient. The time series representing the respiratory activity basically indicates the lung volume of said patient during respiration. The lung volume is at its maximum at the end of inhalation and is at its minimum at the end of exhalation. Therefore, the transition points between inhalation and exhalation correspond to the local maxima of the time series and the transition points between exhalation and inhalation correspond to the local minima of the time series. Nevertheless, the data points can be defined as desired according to individual needs.

**[0023]** Step A6 includes the identification of the heartbeat intervals of said patient matching to or including the data points identified in Step A5, as shown in Fig. 2. The heartbeat interval to be identified is preferably the last complete heartbeat interval, i.e. the heartbeat interval terminated by the last heartbeat prior to the start of exhalation.

**[0024]** Next, as explained with reference to Figs. 3 and 4, a first mean heartbeat interval is calculated in Step A7 from two consecutive heartbeat intervals prior the (data point indicating the) start of exhalation of one breathing cycle. Therefore, said first mean heartbeat interval basically represents a mean heartbeat interval during inhalation. In the example of Fig. 3, the time duration of the penultimate heartbeat interval prior to the start of exhalation is about 870 ms, and the time duration of the ultimate heartbeat interval prior to the start of exhalation is about 860 ms. Therefore, the first mean heartbeat interval amounts to 865 ms  $(=(870 \text{ ms} + 860 \text{ ms})/2)$ . In the example of Fig. 4, the time duration of the penultimate heartbeat interval prior to the start of exhalation is about 951 ms, and the time duration of the ultimate heartbeat interval prior to the start of exhalation is about 955 ms. The first mean heartbeat interval thus amounts to 953 ms  $(=(951 \text{ ms} + 955 \text{ ms})/2)$ .

**[0025]** Next, as explained with reference to Figs. 3 and 4, a second mean heartbeat interval is calculated in Step A8 from two consecutive heartbeat intervals subsequent to the heartbeat intervals used for calculation of said first mean heartbeat interval. The second mean heartbeat interval basically represents a mean heartbeat interval during exhalation. In the example of Fig. 3, the time duration of the heartbeat interval during the start of exhalation phase is about 894 ms, and the time duration of the first complete heartbeat interval after the start of exhalation is about 900 ms. The second mean heartbeat interval thus amounts to 897 ms  $(=(894 \text{ ms} + 900 \text{ ms})/2)$ . In the example of Fig. 4, the time duration of the heartbeat interval during the start of exhalation is about 950 ms, and the time duration of the first heartbeat interval after the start of exhalation is about 948 ms. The second mean heartbeat interval thus amounts to 949 ms  $(=(950 \text{ ms} + 948 \text{ ms})/2)$ .

**[0026]** Next, as explained with continued reference to Figs. 3 and 4, Step A9 includes calculation of the respiratory sinus arrhythmia (RSA) for one breathing cycle by computing a difference or quotient between said first and second heartbeat intervals. In the example of Fig. 3, the respiratory sinus arrhythmia (RSA) for this particular breathing cycle

amounts to + 32 ms (= (897 ms - 865 ms)) and it is calculated by taking the difference between said first and second heartbeat intervals, in particular by subtracting the time duration of the first heartbeat interval from the time duration of the second heartbeat interval. Alternatively, in the example of Fig. 3, the respiratory sinus arrhythmia (RSA) for this particular breathing cycle may be calculated to 1.04 (rounded) (=897 ms / 865 ms) by taking the quotient between said first and second heartbeat intervals, in particular by dividing the time duration of the second heartbeat interval through the time duration of the first heartbeat interval. Both calculations indicate the same physiological reaction, namely that the exhalation decreases heart rate and increases the heartbeat intervals, respectively. In the example of Fig. 4, the respiratory sinus arrhythmia (RSA) for this particular breathing cycle amounts to - 4 ms (=949 ms - 953 ms) and 0.996 (rounded) (= 949 ms / 953 ms), respectively, wherein both calculations indicate that the exhalation increases heart rate and decreases the heartbeat intervals. Accordingly, in the example of Fig. 3, it may be concluded that the patient is in cardiovascular health, if the calculated RSA proves to be stable during a plurality of breathing cycles (see Step A10). On the other hand, in the example of Fig. 4, the calculated RSA for one breathing cycle shown indicates that the exhalation increases heart rate and decreases the heartbeat intervals, respectively. Hence, in the example of Fig. 4, it may be concluded that this patient suffers from severe cardiovascular disease, if the calculated RSA proves to be stable during a plurality of breathing cycles (see Step A10).

**[0027]** As mentioned above, the calculation performed in Step A9 is only representative for one breathing cycle. In order to obtain reliable results while eliminating errors due to irregular conditions during ECG and respiration recordings, the assessment of cardiovascular health of the patient should be based on the patient's physiological reaction during a plurality of breathing cycles rather than on a single breathing cycle. Therefore, in Step A10, a mean respiratory sinus arrhythmia of said patient is calculated by computing the average of the respiratory sinus arrhythmia over a plurality of breathing cycles of said patient. This is usually done by adding up the calculated RSAs for a plurality of breathing cycles divided by the number of breathing cycles (i.e. the number of added RSAs). The result gives the mean RSA for said patient during exhalation.

**[0028]** The subsequent mortality risk assessment according to Step B is based on the calculation performed in Step A and includes the following sub-steps:

In Step B1, said patient is allocated to a low-mortality-risk group in case the mean respiratory sinus arrhythmia of said patient is calculated to increase during exhalation. This is the case when the mean RSA is greater than 0 (difference) or greater than 1 (quotient). In the example of Fig. 3, RSA calculation of a patient to be allocated to a low-mortality-risk group is exemplified for one breathing cycle. The low-mortality-risk group is also called the group of "survivors".

**[0029]** In Step B2, said patient is allocated to a high-mortality-risk group in case the mean respiratory sinus arrhythmia of said patient is calculated to decrease during exhalation. This is the case when the mean RSA is less than 0 (difference) or less than 1 (quotient). In the example of Fig. 4, RSA calculation of a patient to be allocated to a high-mortality-risk group is exemplified for one breathing cycle. The low-mortality-risk group is also referred to as the group of "non-survivors".

**[0030]** Finally, Step B3 outputs the result of risk stratification based on the results of Step B1 and/or Step B2, preferably on a display of a computer device. An appropriate medical treatment may be administered to the patient depending on the result of the mortality risk assessment using the above method.

**[0031]** Steps A and B and preferably at least one of the sub-steps A1 to A10 and/or B1 to B3, can be implemented using conventional computer devices and software. Therefore, the present invention also relates to a computer-readable medium containing a program, which, when loaded, performs the method for assessing a mortality risk of a cardiac patient described above.

**[0032]** The invention has already been tested in a medical study, as will be explained below: The aim of the study was to quantify respiratory sinus arrhythmia (RSA) by bivariate phase-rectified signal averaging and to test the novel method as a risk predictor. Clinical and demographic patient characteristics of the medical study are given in Table 1:

Table 1: Clinical and demographic patient characteristics

	<i>Clinical data</i>		<i>Therapy</i>	
	Age [years] (median, IQR)	61 (52-69)	PCI (%)	93
	Female gender (%)	19	Thrombolysis (%)	1.5
	Diabetes mellitus (%)	20	CABG (%)	0.6
	History of previous MI (%)	10	Aspirin (%)	97
	CK <sub>max</sub> [U/l] (median, IQR)	1,302 (647-2,465)	β-Blocker (%)	95
	LVEF (%)	53 (45-60)	ACE inhibitors (%)	94
	5-year all-cause mortality (%)	7.7	Statins (%) Diuretics (%)	93 44

**[0033]** The medical study involved 30-minute recordings of respiratory chest movements using a piezoelectric chest

belt sensor of the company Protech and ECG-recordings with X, Y, Z-leads one week after myocardial infarction (MI), the signal resolution was 1.6 kHz at 16 Bit. Patients were studied in the morning, in a supine resting position whilst on normal medication.

**[0034]** RSA was assessed as H, which was defined as average change of RR interval length of observed around RR intervals that occurred during the exhalation (expiration phase) of the respiratory cycles (Figure 2). An  $H \leq 0$  was considered abnormal (Figure 4).

**[0035]** A multivariable analysis included H, the GRACE score, LVEF, and diabetes mellitus. Primary end-point was total mortality at a follow-up period of 5 years.

**[0036]** The results of the medical study can be summarized as follows:

During follow-up, 72 (7.7%) patients died. H was a significant predictor of mortality (upper panel of Figure 5). In multivariable analysis, H was an independent risk predictor regardless of whether GRACE score, LVEF, and H were used as continuous or as dichotomized variables. H was particularly strong in patients with high GRACE scores (lower panels in Figure 5). Table 2 gives the results of multivariate Cox-Regression analysis:

Table 2: Multivariate Cox-Regression analysis (predefined cut-off values)

	Wald	p	Hazard ratio	95% CI	
				Lower	Upper
Diabetes	9.260	0.002	2.106	1.304	3.403
LVEF $\leq$ 35%	12.123	<0.001	2.567	1.510	4.363
GRACE $\geq$ 120	31.073	<0.001	4.670	2.716	8.028
H > 0	19.428	<0.001	2.982	1.834	4.847

**[0037]** Therefore, it can be concluded that H is a promising new risk predictor after acute myocardial infarction. H is independent of standard risk predictors and particularly strong in patients with high GRACE scores.

**Claims**

1. Method for assessing a mortality risk of a cardiac patient based on respiratory sinus arrhythmia, said method comprising the following steps:

- a. Step A: Computing the mean respiratory sinus arrhythmia during inhalation and/or exhalation for a plurality of breathing cycles of said patient.
- b. Step B: Assessing the mortality risk of said patient based on said computation,

said Step A further comprising at least the following sub-step:

Step A4: Obtaining a time series representing the respiratory activity or chest movement of said patient by high-pass filtering of electrocardiogram-recordings of said patient, wherein the time series is preferably obtained in digital form and/or covers a period of time of at least 30 minutes.

said Step B further comprising the following sub-steps:

- a'. Step B1: Allocating said patient to a low-mortality-risk group in case the mean respiratory sinus arrhythmia calculated for said patient indicates that the heartbeat intervals are decreasing during inhalation and/or increasing during exhalation.
- b'. Step B2: Allocating said patient to a high-mortality-risk group in case the mean respiratory sinus arrhythmia calculated for said patient indicates that the heartbeat intervals are increasing during inhalation and/or decreasing during exhalation.
- c'. Step B3: Outputting the result of risk stratification based on the results of Step B1 and/or Step B2.

2. Method according to claim 1, said Step A further comprising at least one of the following sub-steps:

- a. Step A2: Identifying QRS-complexes from electrocardiogram-recordings of said patient.
- b. Step A3: Calculating the heartbeat intervals as the periods of time between subsequent two R-peaks of QRS-complexes from electrocardiogram-recordings of said patient.
- d. Step A5: Determining periodic data points based on said time series for a plurality of breathing cycles of said patient, said data points preferably representing starting times of inhalation or exhalation.

- e. Step A6: Identifying the heartbeat interval matching to at least one of said data points.  
 f. Step A7: Calculating a first mean heartbeat interval from at least two consecutive heartbeat intervals prior to at least one of said data points, said first mean heartbeat interval preferably representing a mean heartbeat interval during inhalation or exhalation.  
 5 g. Step A8: Calculating a second mean heartbeat interval from at least two consecutive heartbeat intervals subsequent to the heartbeat intervals used for calculating the first mean heartbeat interval, said second mean heartbeat interval preferably representing a mean heartbeat interval during exhalation or inhalation.  
 h. Step A9: Calculating the respiratory sinus arrhythmia for one breathing cycle of said patient by computing a difference and/or a quotient between said first and second heartbeat intervals for at least one of said data points.  
 10 i. Step A10: Calculating mean respiratory sinus arrhythmia of said patient by computing the average of the respiratory sinus arrhythmia according to Step A9 for a plurality of said data points.

3. Computer-readable medium containing a program, which, when loaded, performs a method for assessing a mortality risk of a cardiac patient according to one of the claims 1 or 2.  
 15  
 4. Device for assessing a mortality risk of a cardiac patient based on respiratory sinus arrhythmia, said device being configured to perform the method according to one of the claims 1 or 2.  
 5. Device according to claim 4, said device comprising display means for displaying the result of mortality risk assessment.  
 20

### Patentansprüche

- 25 1. Verfahren zum Bewerten eines Sterblichkeitsrisikos eines Herzpatienten auf der Basis der respiratorischen Sinusarrhythmie, wobei das Verfahren die folgenden Schritte umfasst:

- a. Schritt A: Berechnen der mittleren respiratorischen Sinusarrhythmie beim Einatmen und/oder Ausatmen für eine Vielzahl von Atmungszyklen des Patienten.  
 30 b. Schritt B: Bewerten des Sterblichkeitsrisikos des Patienten auf der Basis der Berechnung, wobei der Schritt A ferner wenigstens den folgenden Teilschritt umfasst:

#### Schritt A4:

Ermitteln einer Zeitreihe zur Darstellung der Atmungsaktivität oder Brustbewegung des Patienten durch Hochpassfiltern der Elektrokardiogramm-Aufzeichnungen des Patienten, wobei die Zeitreihe vorzugsweise in digitaler Form ermittelt wird und/oder einen Zeitraum von wenigstens 30 Minuten abdeckt, wobei der Schritt B ferner die folgenden Teilschritte umfasst:

- a'. Schritt B1: Zuordnen des Patienten zu einer Gruppe mit geringem Sterblichkeitsrisiko, wenn die für den Patienten berechnete mittlere respiratorische Sinusarrhythmie angibt, dass die Herzschlagintervalle während des Einatmens abnehmen und/oder während des Ausatmens zunehmen.  
 40 b'. Schritt B2: Zuordnen des Patienten zu einer Gruppe mit hohem Sterblichkeitsrisiko, wenn die für den Patienten berechnete mittlere respiratorische Sinusarrhythmie angibt, dass die Herzschlagintervalle während des Einatmens zunehmen und/oder während des Ausatmens abnehmen.  
 45 c'. Schritt B3: Ausgeben des Ergebnisses der Risikoschichtung auf der Basis der Ergebnisse von Schritt B1 und/oder Schritt B2.

2. Verfahren nach Anspruch 1, wobei der Schritt A ferner wenigstens einen der folgenden Teilschritte umfasst:

- a. Schritt A2: Identifizieren von QRS-Komplexen aus Elektrokardiogramm-Aufzeichnungen des Patienten.  
 b. Schritt A3: Berechnen der Herzschlagintervalle als die Zeiträume zwischen zwei aufeinander folgenden R-Peaks von QRS-Komplexen aus Elektrokardiogramm-Aufzeichnungen des Patienten.  
 d. Schritt A5: Bestimmen von periodischen Datenpunkten auf der Basis der Zeitreihe für eine Vielzahl von Atmungszyklen des Patienten, wobei die Datenpunkte vorzugsweise Zeiten des Beginns des Einatmens oder Ausatmens darstellen.  
 55 e. Schritt A6: Identifizieren des zu wenigstens einem der Datenpunkte passenden Herzschlagintervalls.  
 f. Schritt A7: Berechnen eines ersten mittleren Herzschlagintervalls aus wenigstens zwei aufeinander folgenden Herzschlagintervallen vor wenigstens einem der Datenpunkte, wobei das erste mittlere Herzschlagintervall

vorzugsweise ein mittleres Herzschlagintervall während des Einatmens oder Ausatmens darstellt.

g. Schritt A8: Berechnen eines zweiten mittleren Herzschlagintervalls aus wenigstens zwei aufeinander folgenden Herzschlagintervallen nach den zum Berechnen des ersten mittleren Herzschlagintervalls verwendeten Herzschlagintervallen, wobei das zweite mittlere Herzschlagintervall vorzugsweise ein mittleres Herzschlagintervall während des Einatmens oder Ausatmens darstellt.

h. Schritt A9: Berechnen der respiratorischen Sinusarrhythmie für einen Atmungszyklus des Patienten durch Berechnen eines Unterschieds und/oder eines Quotienten zwischen dem ersten und zweiten Herzschlagintervall für wenigstens einen der Datenpunkte.

i. Schritt A10: Berechnen der mittleren respiratorischen Sinusarrhythmie des Patienten durch Berechnen des Durchschnitts der respiratorischen Sinusarrhythmie gemäß Schritt A9 für eine Vielzahl der Datenpunkte.

3. Computerlesbares Medium enthaltend ein Programm, das, wenn geladen, ein Verfahren zum Bewerten eines Sterblichkeitsrisikos eines Herzpatienten gemäß Anspruch 1 oder 2 ausführt.

4. Vorrichtung zum Bewerten eines Sterblichkeitsrisikos eines Herzpatienten auf der Basis der respiratorischen Sinusarrhythmie, wobei die Vorrichtung zum Ausführen des Verfahrens nach Anspruch 1 oder 2 ausgebildet ist.

5. Vorrichtung nach Anspruch 4, wobei die Vorrichtung Anzeigemittel zum Anzeigen des Ergebnisses der Sterblichkeitsrisikobewertung umfasst.

### Revendications

1. Procédé d'évaluation du risque de mortalité d'un patient cardiaque sur la base d'une arythmie respiratoire sinusale, ledit procédé comprenant les étapes suivantes:

a. Etape A: Calcul de l'arythmie sinusale respiratoire moyenne pendant une inhalation et/ou une expiration pour une pluralité de cycles respiratoires dudit patient.

b. Etape B: Evaluation du risque de mortalité dudit patient sur la base dudit calcul, ladite étape A comprenant en outre au moins la sous-étape suivante:

Etape A4:

Obtention d'une série chronologique représentant l'activité respiratoire ou les mouvements de poitrine dudit patient par filtrage passe-haut des enregistrements d'électrocardiogramme dudit patient, la série chronologique étant obtenue de préférence sous forme numérique et/ou couvrant une période d'au moins 30 minutes.

ladite étape B comprenant en outre les sous-étapes suivantes:

a'. Etape B1: Affecter ledit patient à un groupe à faible risque de mortalité au cas où l'arythmie sinusale respiratoire moyenne calculée pour ledit patient indique que les intervalles de battement de coeur diminuent pendant l'inhalation et/ou augmentent pendant l'expiration.

b'. Etape B2: Affecter ledit patient à un groupe à haut risque de mortalité au cas où l'arythmie sinusale respiratoire moyenne calculée pour ledit patient indique que les intervalles de battement de coeur augmentent pendant l'inhalation et/ou diminuent pendant l'expiration.

c'. Etape B3: Production du résultat de la stratification du risque sur la base des résultats de l'étape B1 et/ou de l'étape B2.

2. Procédé selon la revendication 1, ladite étape A comprenant en outre au moins l'une des sous-étapes suivantes:

a. Etape A2:

Identification de complexes QRS à partir d'enregistrements d'électrocardiogrammes dudit patient.

b. Etape A3:

Calcul des intervalles de battement de coeur en tant que périodes de temps entre les deux pics R successifs de complexes QRS à partir d'enregistrements d'électrocardiogrammes dudit patient.

d. Etape A5:

Détermination de points de données périodiques sur la base de ladite série chronologique pour une pluralité de cycles de respiration dudit patient, lesdits points de données représentant de préférence les heures de début d'inhalation ou d'expiration.

## EP 2 957 226 B1

e. Etape A6:

Identification de l'intervalle de pulsation correspondant à au moins l'un desdits points de données.

f. Etape A7:

Calcul d'un premier intervalle de battement de coeur moyen à partir d'au moins deux intervalles de battement de coeur consécutifs avant au moins l'un desdits points de données, ledit premier intervalle de battement de coeur moyen représentant de préférence un intervalle de battement de coeur moyen pendant une inspiration ou une expiration.

g. Etape A8:

Calcul d'un second intervalle de battement cardiaque moyen à partir d'au moins deux intervalles de battement de coeur consécutifs suivant les intervalles de battement de coeur utilisés pour calculer le premier intervalle de battement de coeur moyen, ledit second intervalle de battement de coeur moyen représentant de préférence un intervalle de battement de coeur moyen pendant une expiration ou une inspiration.

h. Etape A9:

Calcul de l'arythmie sinusale respiratoire pour un cycle respiratoire dudit patient en calculant une différence et/ou un quotient entre ledit premier intervalle de battement de coeur et ledit second intervalle de battement de coeur pour au moins l'un desdits points de données.

i. Etape A10:

Calcul de l'arythmie sinusale respiratoire moyenne dudit patient en calculant la moyenne de l'arythmie sinusale respiratoire selon l'étape A9 pour une pluralité desdits points de données.

3. Support lisible par ordinateur contenant un programme qui, une fois chargé, réalise un procédé d'évaluation du risque de mortalité d'un patient cardiaque selon l'une des revendications 1 ou 2.
4. Dispositif d'évaluation du risque de mortalité d'un patient cardiaque sur la base d'une arythmie sinusale respiratoire, ledit dispositif étant configuré pour réaliser le procédé selon l'une des revendications 1 ou 2.
5. Dispositif selon la revendication 4, ledit dispositif comprenant des moyens d'affichage pour afficher le résultat de l'évaluation du risque de mortalité.

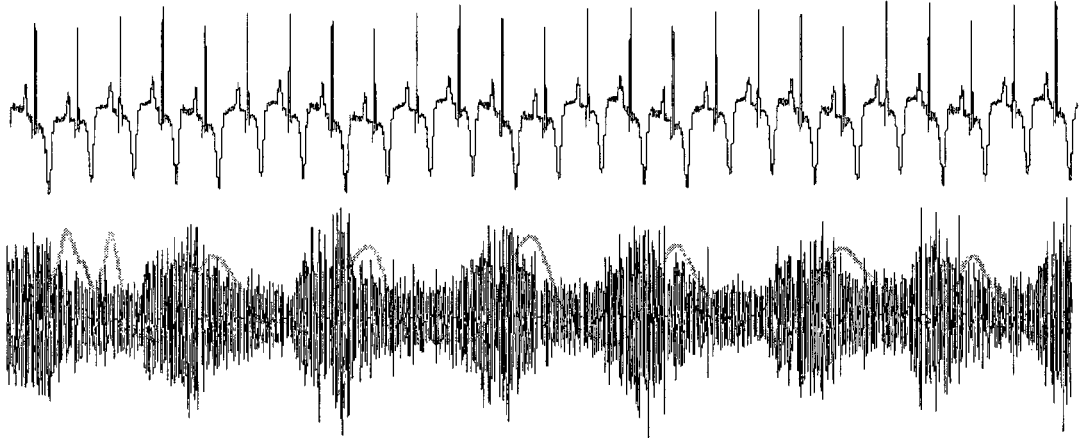


Figure 1

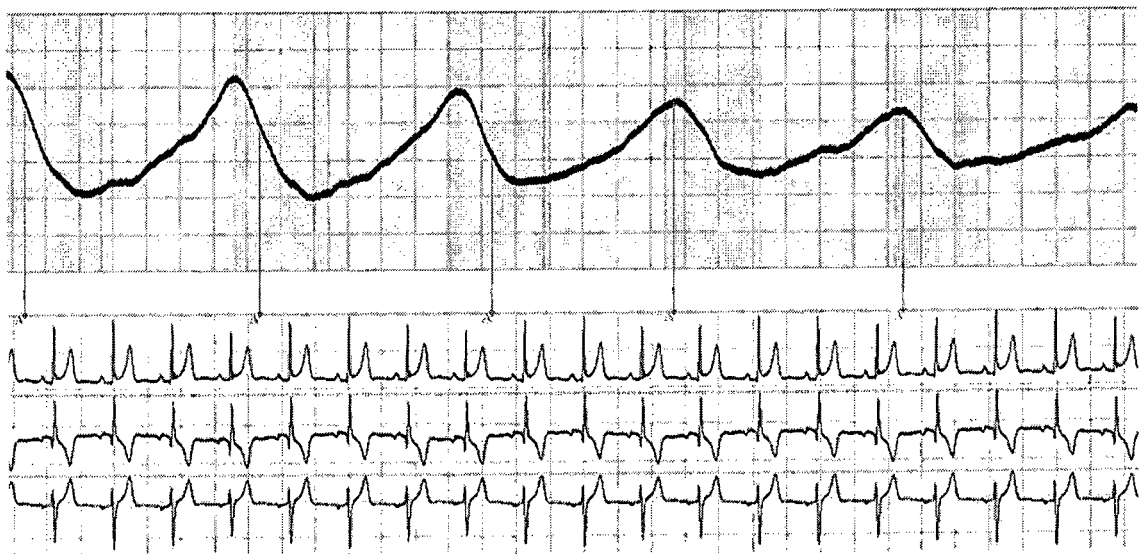


Figure 2

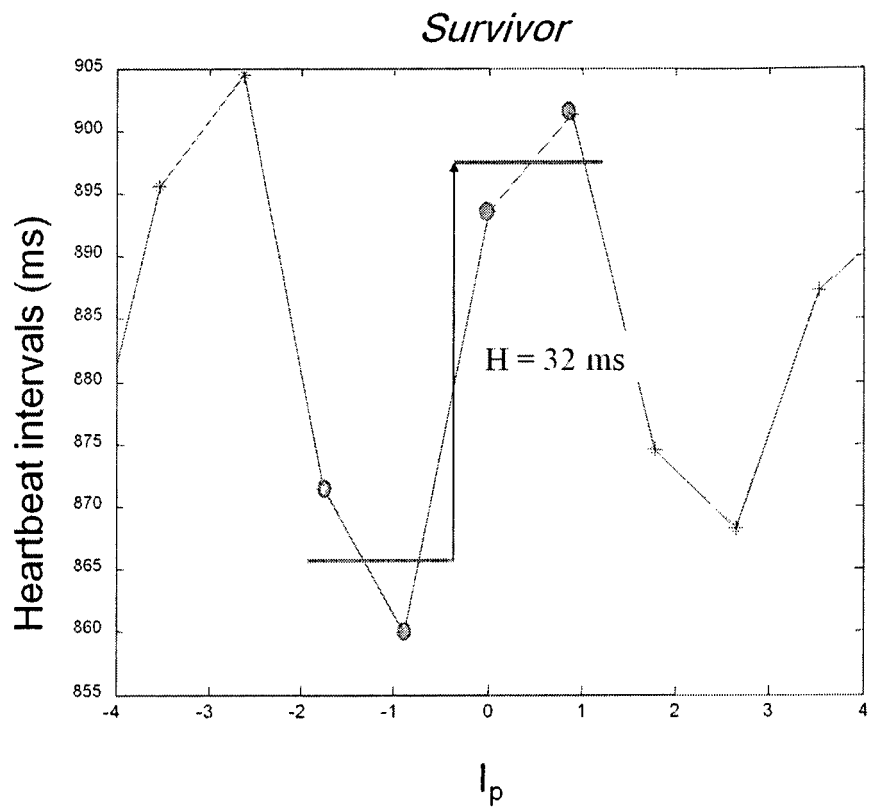


Figure 3

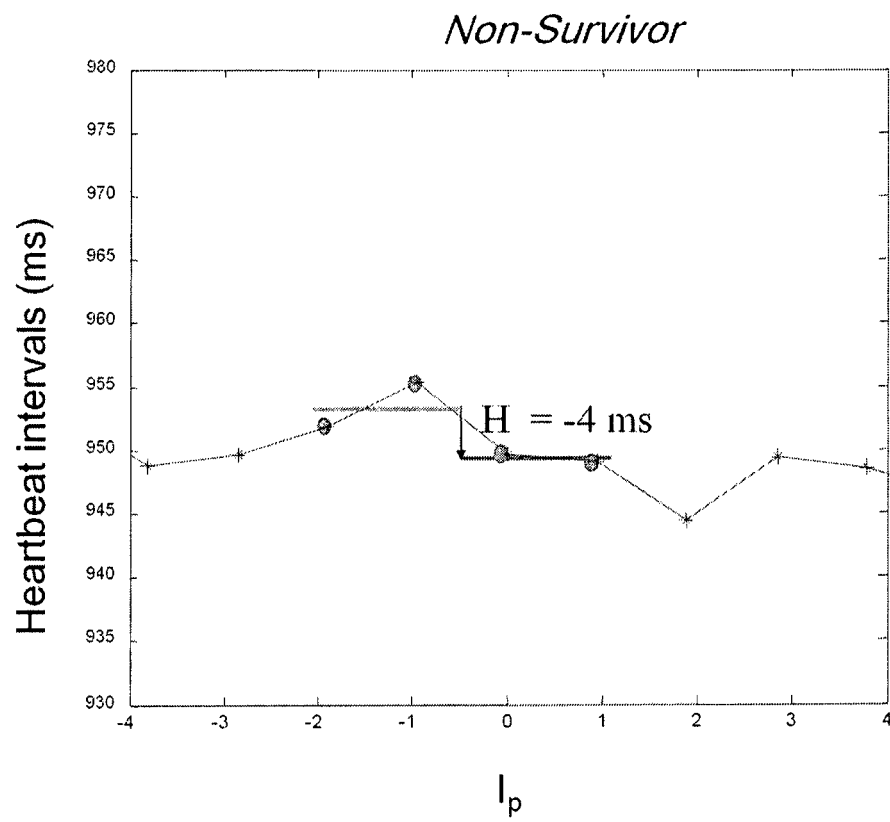


Figure 4

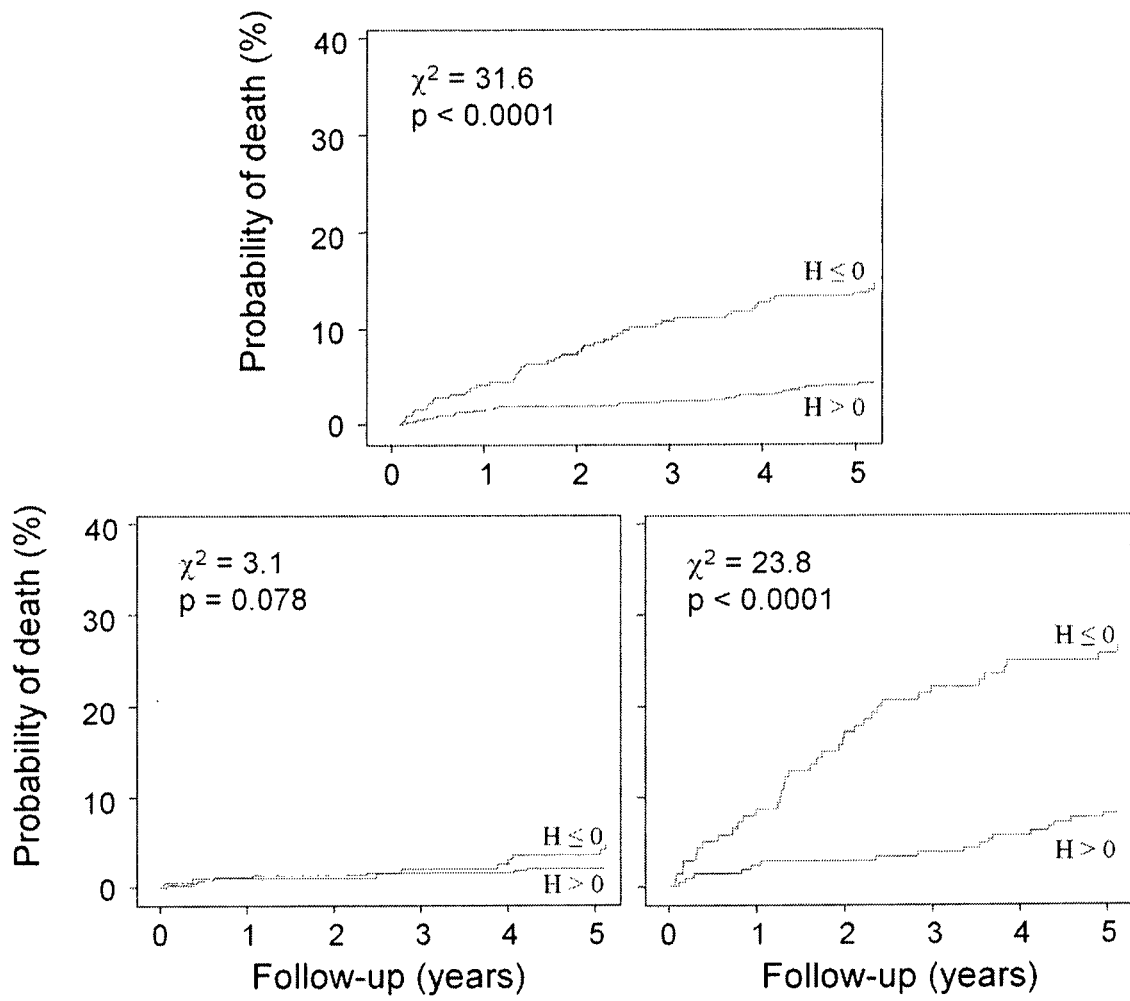


Figure 5

**REFERENCES CITED IN THE DESCRIPTION**

*This list of references cited by the applicant is for the reader's convenience only. It does not form part of the European patent document. Even though great care has been taken in compiling the references, errors or omissions cannot be excluded and the EPO disclaims all liability in this regard.*

**Patent documents cited in the description**

- US 2004127804 A1 [0003]
- US 2013310654 A1 [0003]
- US 2012197091 A1 [0003]
- US 2008071317 A1 [0003]

**Non-patent literature cited in the description**

- **ECO J.C. DE GEUS et al.** Ambulatory measurement of respiratory sinus arrhythmia and respiration rate. *BIOLOGICAL PSYCHOLOGY*, November 1995, vol. 41 (3), ISSN 0301-0511, 205-227 [0003]
- Respiratory sinus arrhythmia and diseases of aging: Obesity, diabetes mellitus, and hypertension. **MASI et al.** *BIOLOGICAL PSYCHOLOGY*. NORTH-HOLLAND PUB, 27 December 2006, vol. 74, 212-223 [0003]
- **SCHMIDT GEORG et al.** RESPIRATORY SINUS ARRHYTHMIA PREDICTS MORTALITY AFTER MYOCARDIAL INFARCTION. *JOURNAL OF THE AMERICAN COLLEGE OF CARDIOLOGY*, vol. 63 (12 [0004]
- **BARTHEL et al.** *European Heart Journal*, 2013 [0022]
- **DOMMASCH et al.** *JACC*, 2014 [0022]

专利名称(译)	用于基于呼吸性窦性心律失常评估心脏病患者的死亡风险的方法和装置		
公开(公告)号	<a href="#">EP2957226B1</a>	公开(公告)日	2019-06-12
申请号	EP2014002124	申请日	2014-06-20
[标]申请(专利权)人(译)	SCHMIDT GEORG		
申请(专利权)人(译)	SCHMIDT , GEORG		
当前申请(专利权)人(译)	SCHMIDT , GEORG		
[标]发明人	SCHMIDT GEORG		
发明人	SCHMIDT, GEORG		
IPC分类号	A61B5/024 G06F19/00 A61B5/00 A61B5/0205 A61B5/0452 A61B5/08		
CPC分类号	A61B5/7275 A61B5/0205 A61B5/024 A61B5/02405 A61B5/04012 A61B5/0452 A61B5/0456 A61B5/08 A61B5/0816 G16H50/30		
其他公开文献	EP2957226A1		
外部链接	<a href="#">Espacenet</a>		

摘要(译)

为了满足对高可靠性死亡率风险预测方法和装置的需求，同时最小化患者和卫生人员的努力，本发明提供了一种基于呼吸性窦性心律失常评估心脏病患者的死亡风险的方法。所述方法包括以下步骤。步骤A：针对所述患者的多个呼吸循环计算吸气和/或呼气期间的平均呼吸性窦性心律不齐。步骤B：基于所述计算评估所述患者的死亡风险。还公开了一种用于执行所述方法的设备。

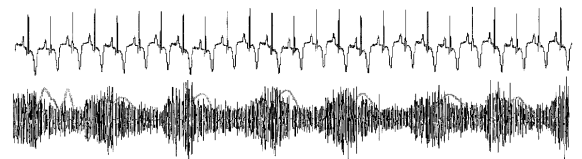


Figure 1

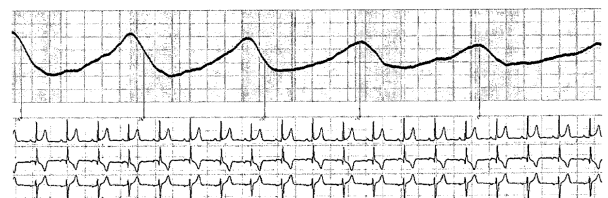


Figure 2