



(12) **EUROPEAN PATENT APPLICATION**

(43) Date of publication:
27.05.2020 Bulletin 2020/22

(51) Int Cl.:
A61B 5/22 (2006.01) **A61B 5/0205 (2006.01)**
A61B 5/00 (2006.01)

(21) Application number: **19211232.4**

(22) Date of filing: **25.11.2019**

(84) Designated Contracting States:
AL AT BE BG CH CY CZ DE DK EE ES FI FR GB GR HR HU IE IS IT LI LT LU LV MC MK MT NL NO PL PT RO RS SE SI SK SM TR
 Designated Extension States:
BA ME
 Designated Validation States:
KH MA MD TN

- **PULKKINEN, Aki**
40100 JYVÄSKYLÄ (FI)
- **MYLLYMÄKI, Tero**
40100 JYVÄSKYLÄ (FI)
- **SEPPÄNEN, Mikko**
40100 JYVÄSKYLÄ (FI)
- **HÄMÄLÄINEN, Kaisa**
40100 Jyväskylä (FI)
- **TOIVIAINEN, Maunu**
40100 Jyväskylä (FI)
- **RUHANEN, Tuukka**
40100 JYVÄSKYLÄ (FI)

(30) Priority: **26.11.2018 FI 20186002**

(71) Applicant: **Firstbeat Technologies Oy**
40100 Jyväskylä (FI)

(74) Representative: **Kespat Oy**
Vasarakatu 1
40320 Jyväskylä (FI)

(72) Inventors:
 • **SAALASTI, Sami**
40100 JYVÄSKYLÄ (FI)

(54) **A METHOD AND A SYSTEM FOR DETERMINING THE MAXIMUM HEART RATE OF A USER OF IN A FREELY PERFORMED PHYSICAL EXERCISE**

(57) This invention relates to a method and a system for determining the maximum heart rate, called HRmax of a user of in a freely performed physical exercise and using an apparatus with software and memory means (1311, 1312).

In the method values are continuously calculated (step 14) for several variables and updating them in memory using said software and memory means, said variables including:

a variable depicting current internal intensity using recorded values of heart rate (HR), and at least one of following two according to a previously provided intensity model.

The method includes further steps of:
 selecting a range for heart rate (HR_i) nearby the last recorded maximum heart rate (HRmax)
 seeking a minimum value of an objective function (f()) (step 18) depicting the difference between relative intensity according to external workload and internal intensity across the range using said intensity model having heart rate HR_i as a running variable therein:
 and obtaining a maximum heart rate estimate (HRmax_{est}) at HR_i giving said minimum value,
 validating and storing the obtained value of maximum heart rate estimate (HRmax_{est}) or rejecting it based on a chosen criterion (step 20) .

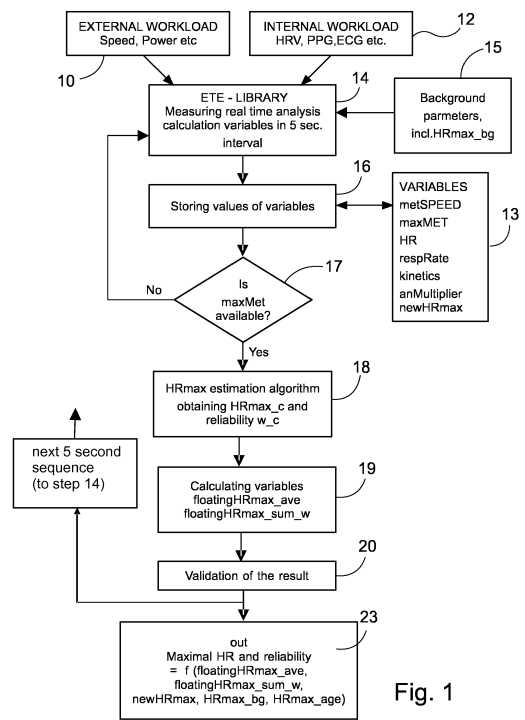


Fig. 1

Description**FIELD**

5 **[0001]** This invention relates to a method and a system for determining the maximum heart rate, called HRmax of a user of in a freely performed physical exercise and using an apparatus with software and memory means..

BACKGROUND

10 **[0002]** Prior art present plurality of methods based on regression analysis for determining maximum heart rate of user Maximum heart rate represents the highest heart rate (HR) an individual can achieve through physical effort, typically represented by a number of beats per minute (bpm). The maximum heart rate value can be used to make a variety of calculations, such as to determine a person's fitness level, energy expenditure, or to create appropriate training heart rate zones an athlete should exercise at to accomplish a specific exercise goal.

15 **[0003]** The most direct way to determine maximum heart rate is for a person to perform maximal exercise and measure their highest heart rate. In many cases, this is not an appropriate method as many people do not wish to perform such a strenuous test. For many others, such as seniors or those with medical conditions, performing such high-intensity tests may also be unsafe.

20 **[0004]** As an alternative, it is possible to estimate a person's maximum heart rate. There are many methods that currently exist to provide an estimation of maximum heart rate. Simple calculations may use a person's age, gender, activity level, or weight. Most of these calculations are unreliable and may produce large errors. For example, age is known to correlate negatively with maximum heart rate, so age-based models of estimating maximum heart rate are common, the most well-known one being $220 - [\text{age}]$. However, these formulas have problems with accuracy and large outliers can occur. This significantly reduces these formulas' usefulness.

25 **[0005]** Many methods are only able to update the maximal heart rate value upwards, meaning that once a maximal heart value is found, it is only updated if a higher one is detected. However, it is a well-known fact that maximal heart rate decreases with age. Thus, if the same wearable device is used by the same user over many years, it should be possible to update the maximal heart rate value downwards.

30 **[0006]** Because maximum heart rate is used in so many other physiological calculations, inaccuracy of this value will have significant effect on calculating anything else. For example, a 10-BPM error in maximum heart rate may increase the error of fitness level estimate by 50 % (i.e., MAPE increases from 5 % to 7.5 %).

[0007] Thus, there is a need for a method of accurately estimating maximum heart rate that does not require a person to perform a maximum effort exercise. Therefore, there remains a continuous need for a more accurate and universal method to estimating maximum heart rate.

35 **[0008]** There are some known prior art known by the applicant.
 WO2017/117183 A1 - Methods, Systems, and Non-transitory Computer Readable Media for Estimating Maximum Heart Rate and Maximal Oxygen Uptake Form [sic] Submaximal Exercise Intensities
 US20160058367 - Context-aware Heart Rate Estimation
 US20160183886 - Biological information predicting apparatus and biological information predicting method
 40 Karavirta, L., Tulppo, M. P., Nyman, K., Laaksonen, D. E., Pullinen, T., Laukkanen, R. T., ... & Hakkinen, K. (2008). Estimation of maximal heart rate using the relationship between heart rate variability and exercise intensity in 40-67 years old men. European journal of applied physiology, 103(1), 25-32.

SUMMARY

45 **[0009]** The aim of this invention is to achieve a new method for determining maximum heart rate of a user and avoid above defects of prior art.

[0010] The method according to invention is characterized by [claim 1 features]

50 **[0011]** In the first embodiment the intensity model takes, in addition of heart rate, account of respiration rate and/or kinetics-information. That kinetics information depicts change in EPOC, more generally the direction of cumulative physiological disturbance in homeostasis, whether it is at steady state, on-response (rising) or off-response (descending).

[0012] Generally speaking it is disclosed a method, which minimizes the absolute value of the difference between simulated (external) intensity and physiological (internal) intensity as a function of maximal heart rate.

55 **[0013]** The claimed method is able to decrease the value of the determined maximal heart rate, which is necessary when aiming a fully realistic result among aging people and users in all levels.

[0014] In a useful embodiment process obtaining the value of HRmax comprises also calculation of its reliability inversely according to a magnitude of the minimum value.

[0015] In another embodiment the validation includes further steps of:

calculating a weighted average floating value of all obtained values of HRmax and storing it, and

comparing each calculated average floating value with the initial value of HRmax and an age based value of HRmax using a predetermined criterion to choose the final value of HRmax.

5

[0016] In another embodiment scanning is carried in two ranges locating upwards and downwards from a chosen starting value and the obtained value with a higher reliability from two obtained values from said ranges is chosen as a final value of HRmax.

10 **A BRIEF DESCRIPTION OF THE FIGURES**

[0017] Advantages of embodiments of the present disclosure will be apparent from the following detailed description of the exemplary embodiments. The following detailed description should be considered in conjunction with the accompanying figures in which:

15

Figure 1 presents an exemplary flowchart illustrating the main flow of execution of calculation of maximal heart rate (HRmax).

20

Figure 2 presents the flowchart of the Estimation algorithm

Figure 3 and 4 present exemplary diagrams depicting scanning the objective function in one or two ranges.

25

Figures 5a, 5b and 5c present exemplary charts for internal-intensity function "int-int" - used in the estimation algorithm during three typical exercise phases: A) steady state, B) on-response and C) off-response.

Figure 6 presents an exemplary block diagram of a system with additional interfaces.

DETAILED DESCRIPTION

30

[0018] Aspects of the invention are disclosed in the following description and related drawings directed to specific embodiments of the invention. Alternate embodiments may be devised without departing from the spirit or the scope of the invention. Additionally, well-known elements of exemplary embodiments of the invention will not be described in detail or will be omitted so as not to obscure the relevant details of the invention. Further, to facilitate an understanding of the description discussion of several terms used herein follows.

35

[0019] As used herein, the word "exemplary" means "serving as an example, instance or illustration." The embodiments described herein are not limiting, but rather are exemplary only. It should be understood that the described embodiments are not necessarily to be construed as preferred or advantageous over other embodiments. Moreover, the terms "embodiments of the invention", "embodiments" or "invention" do not require that all embodiments of the invention include the discussed feature, advantage or mode of operation.

40

[0020] Further, many of the embodiments described herein are described in terms of sequences of actions to be performed by, for example, elements of a computing device. It should be recognized by those skilled in the art that the various sequences of actions described herein can be performed by specific circuits (e.g. application specific integrated circuits (ASICs)) and/or by program instructions executed by at least one processor. Additionally, the sequence of actions described herein can be embodied entirely within any form of computer-readable storage medium such that execution of the sequence of actions enables at least one processor to perform the functionality described herein. Furthermore, the sequence of actions described herein can be embodied in a combination of hardware and software. Thus, the various aspects of the present invention may be embodied in a number of different forms, all of which have been contemplated to be within the scope of the claimed subject matter. In addition, for each of the embodiments described herein, the corresponding form of any such embodiment may be described herein as, for example, "a computer configured to" perform the described action.

45

[0021] The method can be implemented in versatile devices, which have resources for measuring internal intensity and external workload, and run software to execute processes depicted in the exemplary flowcharts of Figures 1 and 2. A schematic hardware assembly is depicted below in exemplary Figure 6.

50

[0022] Initial background and personal data may be stored. For example, the fitness level (for example VO₂max or METmax) and the maximum heart rate (HRmax), and the like, of the user may be stored. Personal data may be entered or determined beforehand.

55

DESCRIPTION OF THE PROGRAM (FIGURE 1)

[0023] In Figure 1 the shown calculation process of maximal heart rate (HRmax) may be a part of bigger software that monitors and analyzes physiology of a user. External (10) and internal (12) workloads are measured continuously. The external workload may be measured in many ways, for example (but not limited to) speed, altitude, power, etc. The internal workload is monitored usually by heart rate, which may be performed by various devices, such as (but not limited to) a heart rate belt, PPG- or ECG-device.

[0024] External and internal workloads are monitored (5 sec interval) by a host process, here ETE - library software, step 14. It will need here some background parameters, like age, sex, a possible initial value of HRmax, here HRmax_{bg} from step 15. The ETE software calculates continuously several variables for HRmax estimation software. These variables are updated in every 5 seconds (more generally in 1 - 15 seconds) and stored temporarily (runtime), step 16.

LOCAL VARIABLES IN THIS FUNCTION:

[0025] The core variables metSPEED, maxMET, HR, respRate, kinetics, anMultiplier are defined below.

[0026] Several other parameters are used:

w_c: reliability weight of the optimal solution (fixed point)

i: iteration index in while loop (integer)

f_old: previous value of the objective function (fixed point)

f_i: current value of the objective function (fixed point)

Int. Intensity_i: intensity (%-maxMET) at current solution (integer)

[0027] Output arguments in this function:

HRmax_c: optimal solution (integer)

[0028] The ETE library updates the (majority of) its global variables once every five seconds (more generally 1 -15 seconds depending on a particular embodiment). Before estimating the maximal heart rate, the following variables are updated by ETE:

HR: current heart rate level (may be updated in principle after each heart beat)

speed: current walking/running speed of the user

altitude: current altitude as obtained, e.g., via GPS or a barometer

power: pedaling power (only available in the case of cycling or rowing)

inclination_angle: current angle of inclination (in radians) obtained directly or through sequential altitude and speed measurements

metSpeed: MET estimate calculated using external workload, calculated as $VO2/3.5$ (where 3.5 is a constant), where **VO2** is one of following (all in units: ml/min/kg):

- **VO2_running** = $12.0 * speed + 3.5$
- **VO2_walking** = $4.3804 * speed^2 - 0.2996 * speed + 7.0928$
- **VO2_power** = $(12.24 * power + 350.0) / weight$

[0029] Here, **speed** is in units m/s. It is the raw input speed (without inclination correction). The weight of the user in kilograms is given by the variable **weight**.

[0030] In the case of running and walking, the inclination angle may be taken into account as follows: If inclination angle is positive, as when going uphill:

$$VO2_running = VO2_running + speed * inclination_angle * 54.0$$

$$VO2_walking = VO2_walking + speed * inclination_angle * 108.0$$

[0031] There are similar equations available when the inclination angle is negative, as when going downhill.

EP 3 656 304 A1

[0032] In the case of running and walking, the software may select the minimum of these two values:

VO2 = MIN(**VO2_running**, **VO2_walking**), when the type of exercise is not known.

[0033] In the case of cycling, only **VO2_power** is available, and this value is thus assigned to the variable **VO2**.

5 **maxMET**: the weighted maximal MET estimate given by the ETE library. Heart rate (beat-to-beat interval and/or heart rate level) and external work (speed and optionally altitude, or pedaling/rowing power) are required for estimation of maxMET. If there has not been enough reliable data available during the current measurement (e.g., due to missing speed data or low-quality heart rate data), the maximal MET value given as background parameter is assigned to this variable. Otherwise the value of zero is used to indicate a missing value.

10 **respRate**: respiration rate (in Hz) estimated from the RRI sequence or heart rate data

fxEpochHr: heart rate based EPOC estimate. This variable is used in the neural network that calculates the internal intensity (Int-int). The value of kinetics (selection of A, B, C of figure 5) are defined by this variable.

15 **anMultiplier**: multiplier (greater than or equal to one) used to increase intensity based on anaerobic load.

20 **floatingHRmax_ave**: weighted average of maximal heart rate values given by the HRmax estimation algorithm (Figure 2) during the current training session. The weights used in the calculation of the weighted average are the reliability weights (**w_c**, between zero and one), as described in Figure 2. This variable is updated after the HRmax estimation algorithm in step 19. This variable is either initialized to zero in the beginning of the current exercise or the latest available value from the previous exercise session as the initial value.

25 **floatingHRmax_sum_w**: sum of the reliability weights (**w_c**) given by the HRmax estimation algorithm during the current training session. This variable is updated after the HRmax estimation algorithm in step 19. This variable is either initialized to zero in the beginning of the current exercise or the latest available value from the previous exercise session as the initial value.

30 **newMaxHR**: highest measured heart rate (i.e., largest value observed for the variable **HR**) encountered during the current training session

[0034] The following internal (global) variables are calculated and stored in the initialization phase of the ETE library (in the beginning of the current training session) and they remain constant throughout the current training session (step 15):

35 **age**: age of the user in years

weight: weight of the user in kilograms

40 **HRmax_age**: age-based estimate for maximal heart rate: $210 - 0.65 * \text{age}$

HRmax_bg: maximal heart rate given as background parameter; if this was not given by the user, the default value **HRmax_age** is assigned to it

45 [0035] The maximal heart rate estimation algorithm (step 18) is run only if fitness level estimate (i.e., non-zero value for the variable **maxMET**) is available. The maximal heart rate estimation algorithm (step 18) minimizes the absolute difference between external and internal intensities as a function of maximal heart rate. The details of the algorithm with references to Figure 2 are given later in the text.

50 [0036] After the estimation algorithm has finished with the optimal solution **HRmax_c** and its reliability weight **w_c** as outputs, a weighted average of HRmax solutions and the sum of reliability weights are updated with the following equations (step 19):

HRmax weighted average: $\text{floatingHRmax_ave} = (\text{floatingHRmax_ave} + (\text{w_c} * \text{HRmax_c}) / \text{floatingHRmax_sum_w}) / (1 + \text{w_c} / \text{floatingHRmax_sum_w})$

55 Sum of reliability weights: $\text{floatingHRmax_sum_w} = \text{floatingMaxHR_sum_w} + \text{w_c}$

[0037] With these floating weight values the obtained maximum heart rate estimate (**HRmax_est**) is validated and stored or rejected it based on a chosen criterion (step 20).

[0038] These two variables are updated after each call to the HRmax estimation routine (step 18). Optimal solutions (**HRmax_c**) with higher reliability weights (**w_c**) have larger effect on the value of the weighted average (**floatingHRmax_ave**).

[0039] The weighted average of optimal solutions **floatingHRmax_ave** provides an estimate for the maximal heart rate for the user. However, in the case of an erroneous input speed, altitude, power or heart rate data, the estimate may be unreliable. Hence, the estimate is validated (step 20) via comparing it with the values of the variables **HRmax_bg**, **HRmax_age** and **newMaxHR**. Then the execution returns to handle next 5 second sequence (to step 14). Also, the latest HRmax estimate is given as output every 5 seconds. Based on predetermined validation rules, the final maximal heart rate solution is calculated as a function of the variables **floatingHRmax_ave**, **floatingHRmax_sum_w**, **HRmax_bg**, **HRmax_age** and **newMaxHR**. The final solution and possibly a reliability calculated for it in the validation phase are given as output in step 23.

DESCRIPTION OF THE HRMAX ESTIMATION ALGORITHM (FIGURE 2)

[0040] The maximal heart rate estimation algorithm (step 18 and Figure 2) is entered only if a non-zero value for **maxMET** is currently available.

[0041] The maximal heart rate estimation method tries to minimize the objective function $f = f(\text{HR}_i)$ as a function of maximal heart rate, i.e., the decision variable **HR_i** (steps 1851 and 1852), where

$$f(\text{HR}_i) = |\text{external_intensity} - \text{internal_intensity}(\text{HR}_i, \text{HR}, \text{respRate}, \text{kinetics})|$$

[0042] The values of the variables **external_intensity**, **HR**, **respRate** and **kinetics** remain constant during the minimization (scanning) phase in each 5-second calculation round. Thus, only the second term **internal_intensity()** varies as the decision variable **HR_i** is changed during the optimization (scanning) process.

[0043] The external intensity is defined as the ratio of **metSpeed** and **maxMET**:

$$\text{external_intensity} = \text{metSpeed}/\text{maxMET}$$

metSpeed and **maxMET** are the latest available values for the variables. They remain fixed during the scanning procedure of one calculation round.

[0044] Estimate for the internal intensity (a value in the range [0,1]) is provided by the HR based neural network model within the ETE library by the function **internal_intensity()** (abbreviation: **Int_int**) which is a nonlinear function of the following variables:

relative heart rate: ratio between current heart rate (**HR**) and current candidate for maximal heart rate (**HR_i**): **HR/HR_i**

respRate: respiration rate (in Hz) estimated from the RRI sequence or heart rate data

kinetics: difference between the current and previous (5 s earlier) HR-based EPOC value: **fxEpochr(current) - fxEpochr(previous)**

[0045] Any model for the internal intensity should have as parameters at least relative heart rate (**HR/HR_i**) and one of said two parameters (**respRate**, **kinetics**) - preferably both parameters. An embodiment which has heart rate (**HR/HR_i**) as a sole parameter would also be possible but may suffer from inaccuracy.

[0046] Here, the objective function is thus the absolute value of the difference between the external and internal intensities. It should be noted that the function can also be, for example, the second power of the said difference, or any other function which monotonically increases in value as the absolute value of the difference between external and internal intensities increase.

[0047] The estimation algorithm (Figure 2) uses the latest available values of the global variables (13). References are also made to Figures 3 - 5.

[0048] The host software calls this child process (step 1801) and it defines a scanning range (step 1803) and sets a step (usually 1 bpm). In the scanning process (1805) heart rate **HR_i** runs stepwise across the range (**HR_{lower} - HR_{upper}**) from a set starting point. In each point the value of the objective function is calculated (step 1851) and it is compared to previous values (step 1852). Thus, the **nth** **HR_i** gets value from following equation: **HR_n = HR_{lower} + n × STEP**.

[0049] If there is only one range (Fig. 3), the starting point is somewhere near the background max heart rate (**HRmax_bg**). If there are two ranges (Fig. 4) and two scanning processes, both start preferably from the background max heart rate (**HRmax_bg**) and the lowest minimum value of two minimums defines the true minimum of objective function. Finally, the maximal heart rate value which leads to the lowest value for objective function is selected as HRmax candidate (variable **HRmax_c** in Figure 2).

[0050] During scanning, the objective function $f(\text{HR}_i)$ is calculated in each value of **HR_i** (step 1851). The other parameters are treated as constants during this 5 second process and they are picked up from list of the global variables (13). The optimization (scanning) process can be implemented by any numerical optimization method suitable for the task (e.g., linear scan, binary search, line search, etc.).

[0051] When the optimization of step 1852 is carried out using a linear scan using a running variable **HR_i**, the scanning process is stopped once all values in the range (**HR_{lower}** - **HR_{upper}**) has been scanned at the specified step size. The optimal solution (**HRmax_c**) is the value of the decision variable which produces lowest value for the objective function in this range. Alternatively, if the objective function may be assumed to contain a single minimum in the scanned range, the linear scan may be stopped early as soon as the first minimum has been found. Other search methods such as binary search and line search become applicable when such assumption on unimodality of the objective function may be assumed.

[0052] The maximal heart rate **HR_max_c** is the only decision variable in the minimization process. It should be noted that the external_intensity is dependent on maximal heart rate, as well: the estimation of the fitness level (**maxMET**) requires an estimate for maximal heart rate. However, based on empirical testing, the presented method converges towards correct solution even if value of the variable **external_intensity** is calculated using the maximal heart rate value given by the background variable **HRmax_bg** which remains constant throughout a single measurement. The presented method could be extended to the situation where the **external_intensity** depends on the running variable **HR_i**, i.e. on the decision variable **HR_i**, as well. However, it would increase the space and time complexity of the algorithm.

[0053] The reliability of the optimal solution (**HRmax_c**) is quantified with a non-negative reliability weight which correlates negatively with the value of the objective function at the optimal solution. In one example, a reliability weight is calculated with an empiric equation

$$w_c = 1, \text{ if } 0.2 - 5.3452 \times f() > 1$$

$$w_c = 0, \text{ if } 0.2 - 5.3452 \times f() < 0$$

$$w_c = 0.2 - 5.3452 \times f() \text{ otherwise.}$$

[0054] Here, the value of the objective function at the optimal solution is denoted with $f()$.

[0055] Possible anaerobic part will be checked by steps 1809, 1810 and 1811 and it will decrease the weight (**w_c**) of the obtained optimal solution (maximum heart rate value **HRmax_c**). If significant anaerobic contribution is present during the current exercise, the **anMultiplier** variable has a value larger than one. When anaerobic contribution is not present, **anMultiplier** remains at 1.0.

[0056] If **anMultiplier** exceeds the value of 1.0, the value of the reliability weight **w_c** is decreased, e.g., with the following empirical equation:

$$w_c = w_c / (2 \times \text{anMultiplier}) \text{ (step 1810).}$$

[0057] Finally, the optimal solution (**HRmax_c**) and its reliability weight (**w_c**) have been calculated (step 1811) and they are given as outputs in step 1812.

DESCRIPTION OF THE INTERNAL INTENSITY FUNCTION (FIGURE 5)

[0058] There are three separate situations (Fig. 5A- 5C), each of which defines the function used in the estimation algorithm during three typical exercise phases: A) steady state, B) one example of on-response and C) one example of off-response. These states A, B and C are referred to as "kinetics" and they are defined by EPOC-calculation or any other method determining a change in homeostasis. Figures 5B and 5C show just one example of both these states as the rate of change in fatigue accumulation or recovery and may vary, whereas steady-state (5A) always means a state where fatigue level remains completely unchanged.

DESCRIPTION OF EXEMPLARY EMBODIMENTS (FIGURE 6)

[0059] The system and method according to the exemplary embodiments can be applied in many kinds of devices as would be understood by a person of ordinary skill in the art. For example, a wrist top device with a heart-rate transmitter, a mobile device such as a phone, tablet or the like, or other system having CPU, memory and software therein may be used.

[0060] According to exemplary Figure 6, in the implementation may include an assembly built around a central processing unit (CPU) 132. A bus 136 may transmit data between the central unit 132 and the other units. The input unit 131, ROM memory 1311, RAM memory 1312, keypad 118, PC connection 137, and output unit 134 may be connected to the bus. RAM memory has an allocated area 122 for HRmax calculation, namely local and global variables therein.

[0061] The system may include a data logger which can be connected to cloud service, or other storage as would be understood by a person of ordinary skill in the art. The data logger may measure, for example, physiological response and/or external workload.

[0062] A heart rate sensor 142 and any sensor 140 registering external workload may be connected to the input unit 131, which may handle the sensor's data traffic to the bus 136. In some exemplary embodiments, the PC may be connected to a PC connection 137. The output device, for example a display 145 or the like, may be connected to output unit 134. In some embodiments, voice feedback may be created with the aid of, for example, a voice synthesizer and a loudspeaker 135, instead of, or in addition to the feedback on the display. The sensor 140 which may measure external workload may include any number of sensors, which may be used together to define the external work done by the user.

[0063] More specifically the system presented in Figure 6 may have the following parts for determining the maximum heart rate of a user.

- a heart rate sensor (142) configured to measure the heartbeat of the person, the heart rate signal being representative of the heartbeat of the user;
- at least one sensor (140) to measure an external workload during an exercise, and
- a data processing unit (132) operably coupled to the said sensors (142, 140), a memory (1311, 1312) operably coupled to the data processing unit (132),
- the memory may be configured to save background information of a user, for example, background data including an earlier fitness level, as well as HRmax and the like.

[0064] The data processing unit (132) may include dedicated software configured to execute the embodiments described in the present disclosure.

[0065] As described above in the exemplary embodiments, default values of the optional parameters may be stored in a ROM memory, in an EEPROM (Electrically Erasable Programmable Read-Only Memory) memory, or in other memory as would be understood by a person of ordinary skill in the art.

Claims

1. A method for determining the maximum heart rate, called **HRmax**, of a user in a freely performed physical exercise and using an apparatus with software and memory means, comprising:

providing and storing an initial value for **HRmax**,
 providing and storing an intensity model of actual internal intensity (Int-int) utilizing at least relative heart rate and one of following: respiration rate, disturbance in homeostasis (Kinetics), the method comprising steps of:

continuously measuring heart rate (**HR**) (step 12), by a heart rate sensor (142) and recording a measured heart rate value at least temporarily,
 continuously measuring by at least one sensor (140) an external workload (10), wherein a measured workload value is recorded at least temporarily and associated with the measured heart rate value
 continuously calculating values (step 14) for several variables and updating them in memory using said software and memory means (1311, 1312), said variables including
 a variable depicting current internal intensity using recorded values of heart rate (**HR**), and at least one of following two according to said intensity model:

- a variable depicting current respiration rate called as **respRate** using recorded values of heart rate (**HR**), and/or
- a variable (**kinetics**) depicting at least direction of cumulative physiological disturbance in homeostasis using the recorded values of heart rate and external workload, and
- a variable depicting maximum performance (**maxMET**),
- a variable depicting external intensity based on the recorded values of external workload (**metSPEED**)

and maximum performance, and

the method including further steps of:

5 selecting a range for heart rate (**HR_i**) (step 1803) nearby the last recorded maximum heart rate (HRmax) and storing values HR_{lower} , HR_{upper} for upper and lower ends of that range, seeking a minimum value of an objective function (**f()**) (step 18) depicting the difference between external intensity and internal intensity by scanning the objective function (**f()**) across the range between the values HR_{lower} HR_{upper} using said [internal] intensity model having heart rate **HR_i** as a running variable therein, and obtaining and storing a maximum heart rate estimate (**HRmax_{est}**) at **HR_i** giving said minimum value, validating and storing the obtained value of maximum heart rate estimate (**HRmax_{est}**) or rejecting it based on a chosen criterion (step 20) .

- 15 2. A method according to claim 1, **characterized in that** said objective function **f()** is calculated using an equation:

$$20 \quad f(HR_i) = |\text{external_intensity} - \text{internal_intensity}(HR_i, HR, \text{respRate}, \text{kinetics})|,$$

where

25 **external_intensity** = **metSPEED/maxMET**, and internal intensity is obtained from an intensity model "Int-int" having a running variable **HR_i** and values for heart rate **HR**, respiration rate **respRate** and **kinetics** as constants during scanning.

- 30 3. A method according to claim 1 or 2, **characterized in that** said obtaining the value of HRmax comprises also calculation of its reliability inversely according to a magnitude of the minimum value of the objective function.

4. A method according to claim 3, **characterized in that** said validation includes further steps of:

35 calculating a weighted average floating value of all obtained values of HRmax and storing it (step 19), and comparing the calculated average floating value with the initial value of HRmax and an age-based value of HRmax and predetermined criterion to choose the final value of HRmax.

- 40 5. A method according to any of claims 1 - 4, **characterized in that** said scanning is carried in two ranges locating upwards and downwards from a chosen starting value and the obtained value with a higher reliability from two obtained values from said ranges is chosen as a final value of **HRmax**.

6. A method according to any of claims 1 - 5, **characterized in that** local variables are updated every 1- 15 seconds, preferably in about 5 seconds and stored temporarily.

- 45 7. A method according to any of claims 1 - 6, **characterized in that** the intensity model "int-int" has three input states. A - recovery, B - steady-state and C-accumulating fatigue, one of then selected by a kinetics method determining a change in homeostasis and each having influence on internal intensity value.

- 50 8. A method according to claim 7, **characterized in that** the kinetics method is defined by EPOC -calculation.

9. A method according to any of claims 1 - 8, **characterized in that** the chosen criterion to validate the obtained value of maximum heart rate estimate (HRmax_{est}) is a specific criterion using an age based and background HRmax values.

- 55 10. System for determining the maximum heart rate, called HRmax of a user of in a freely performed physical exercise comprising an apparatus with software and memory means (1311, 1312), the apparatus comprising:

means for providing initial value for HRmax storing that in the memory,

memory for storing an intensity model (Int-int) of actual internal intensity relation at least heart rate, respiration rate and disturbance in homeostasis (kinetics),
 means for executing following steps of:

5 a heart rate sensor (142) for continuously measuring (10) heart rate (**HR**) and means for recording a measured heart rate value at least temporarily,
 at least one second sensor (140) continuously measuring an external workload, and means for recording a respective value at least temporarily and associated the measured heart rate value
 10 means for continuously calculating values (132,) for several variables and updating them in memory using said software and memory means, said variables including

a variable depicting current internal intensity called as %HRmax using recorded values of heart rate (HR),
 15 a variable depicting current respiration rate called as **respRate** using recorded values of heart rate (**HR**),
 a variable (**kinetics**) depicting at least direction of cumulative physiological disturbance in homeostasis using the recorded values of heart rate and external workload,
 a variable depicting maximum performance **maxMET**,
 a variable depicting external intensity using measured external workload
 20 external intensity using measured external workload and maximum performance (maxMET),

characterized by
 the apparatus having further means to execute steps of:

25 selecting (1803) a range for heart rate (HR_i) nearby the last recorded actual maximum heart rate (HRmax)
 seeking a minimum value of an objective function f() defined (1851) by an equation:

$$30 \quad f(\text{HR}_i) = |\text{external_intensity} - \text{internal_intensity}(\text{HR}_i, \text{HR}, \text{respRate}, \text{kinetics})| ,$$

where
 35 **external_intensity** = metSPEED/maxMET, internal intensity is obtained from an intensity model "Int-int" having running variable HR_i and values for heart rate **HR** respiration rate **respRate** and **kinetics** as constants during scanning,
 obtaining and storing a maximum heart rate estimate (HRmax_{est}) at HR(i) giving said minimum value,
 and means for validating and storing the obtained value of HRmax or rejecting it based on a chosen
 40 criterion.

45

50

55

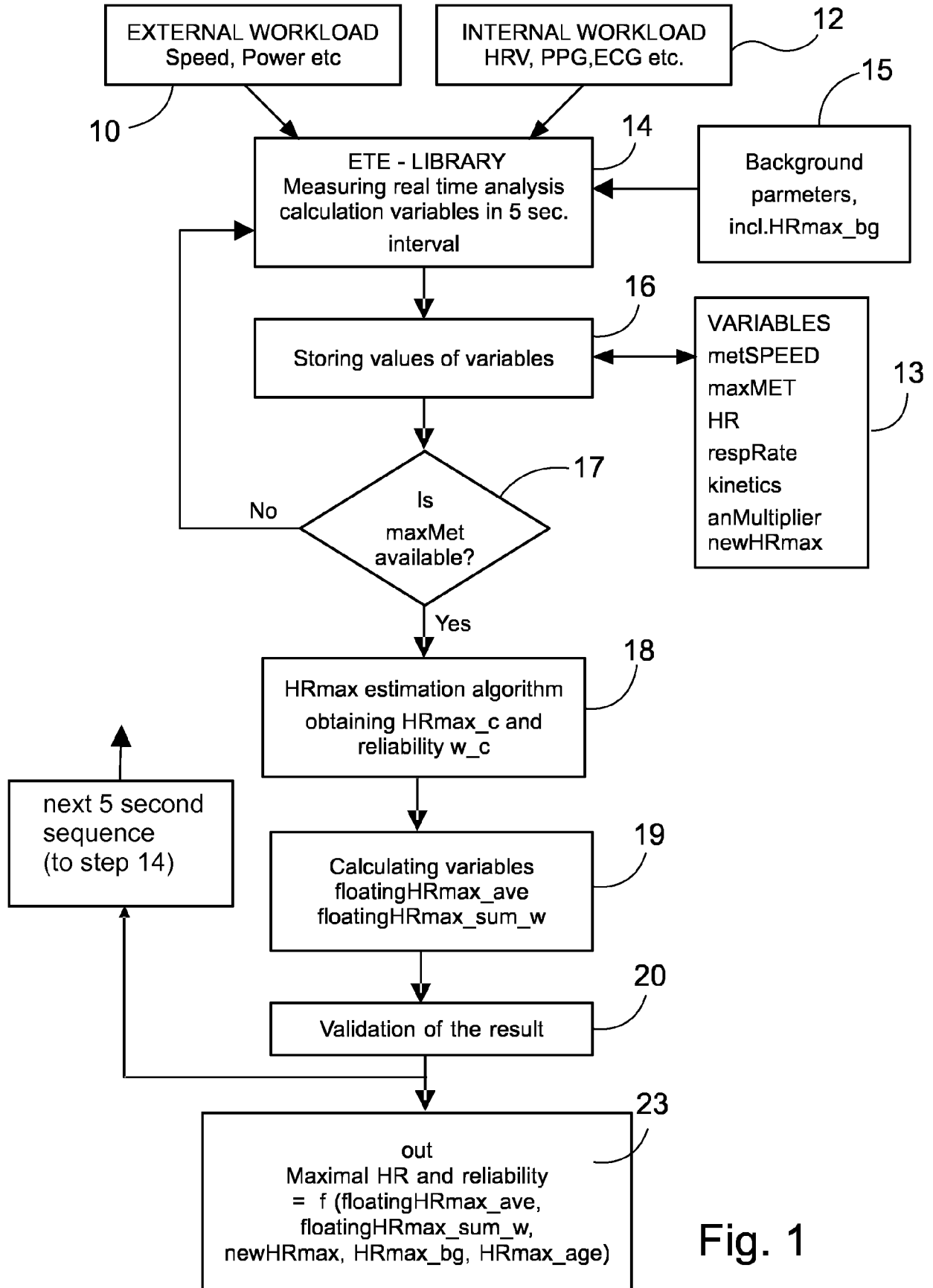


Fig. 1

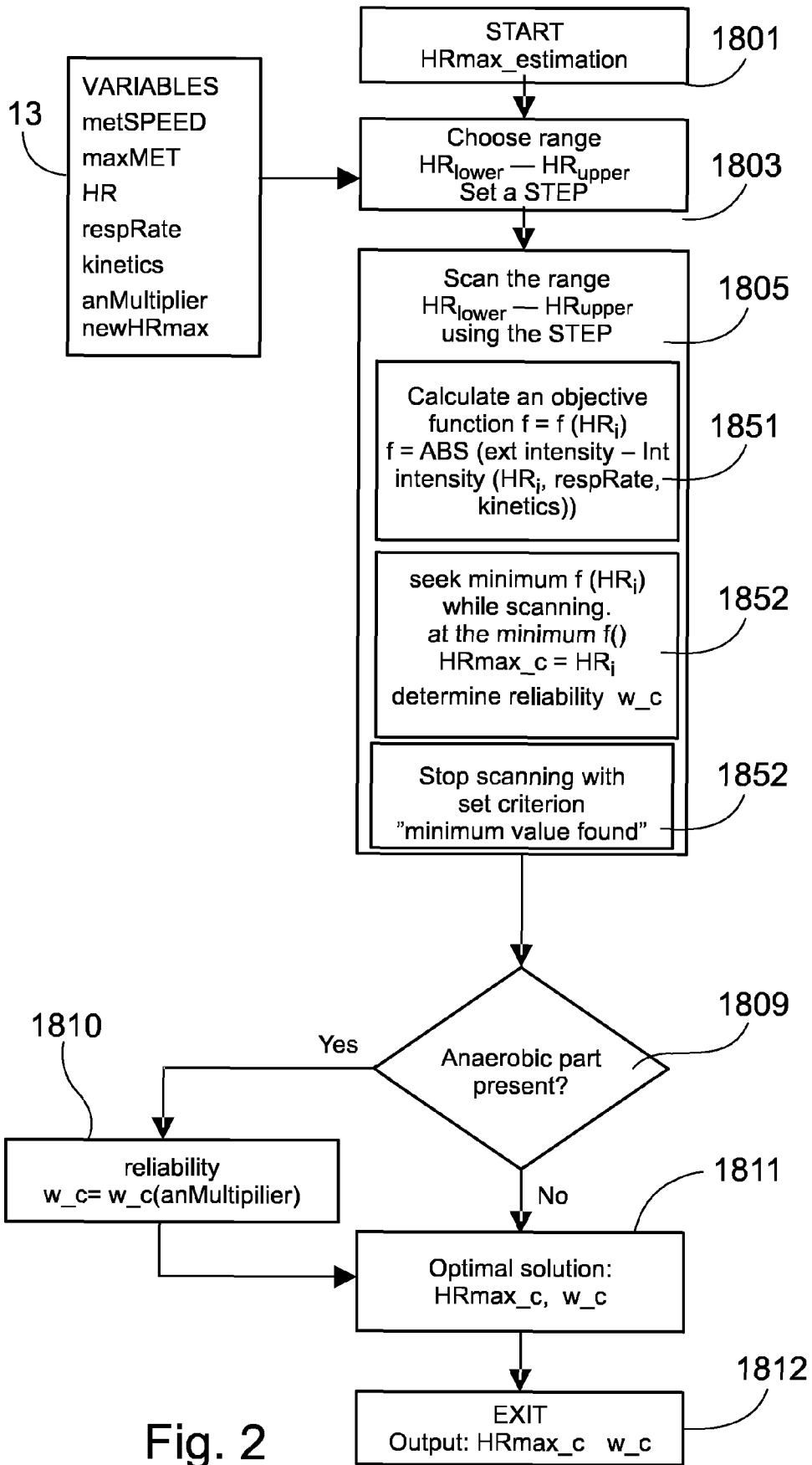


Fig. 2

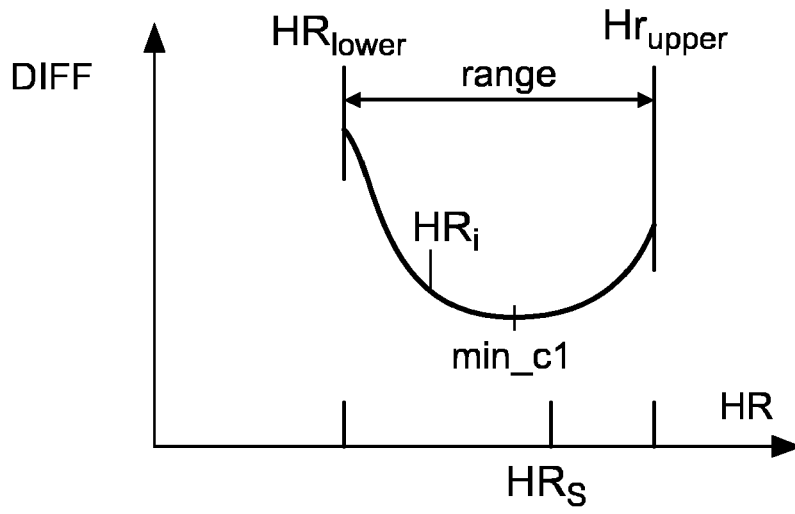


Fig. 3

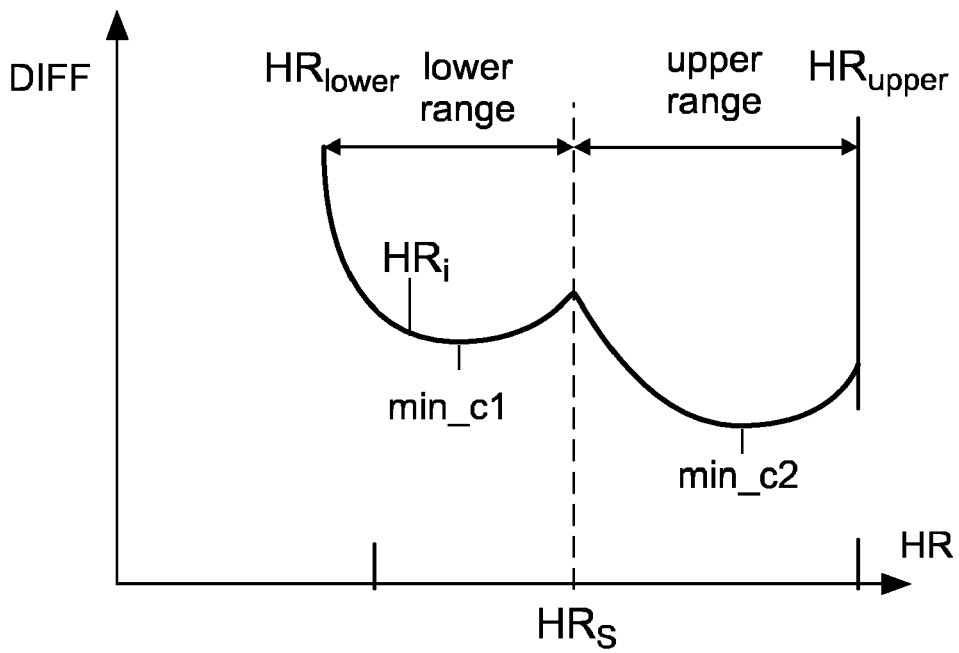


Fig. 4

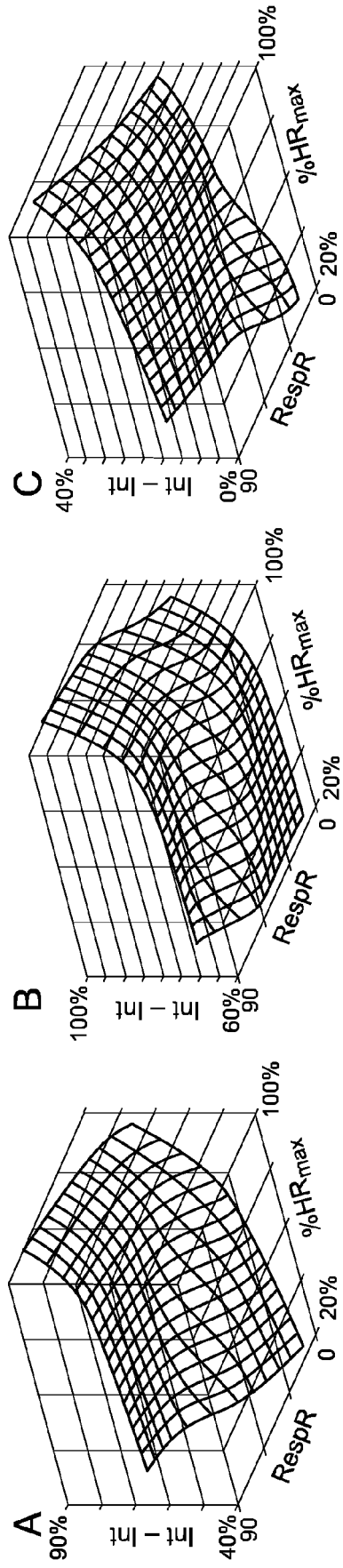


Fig. 5

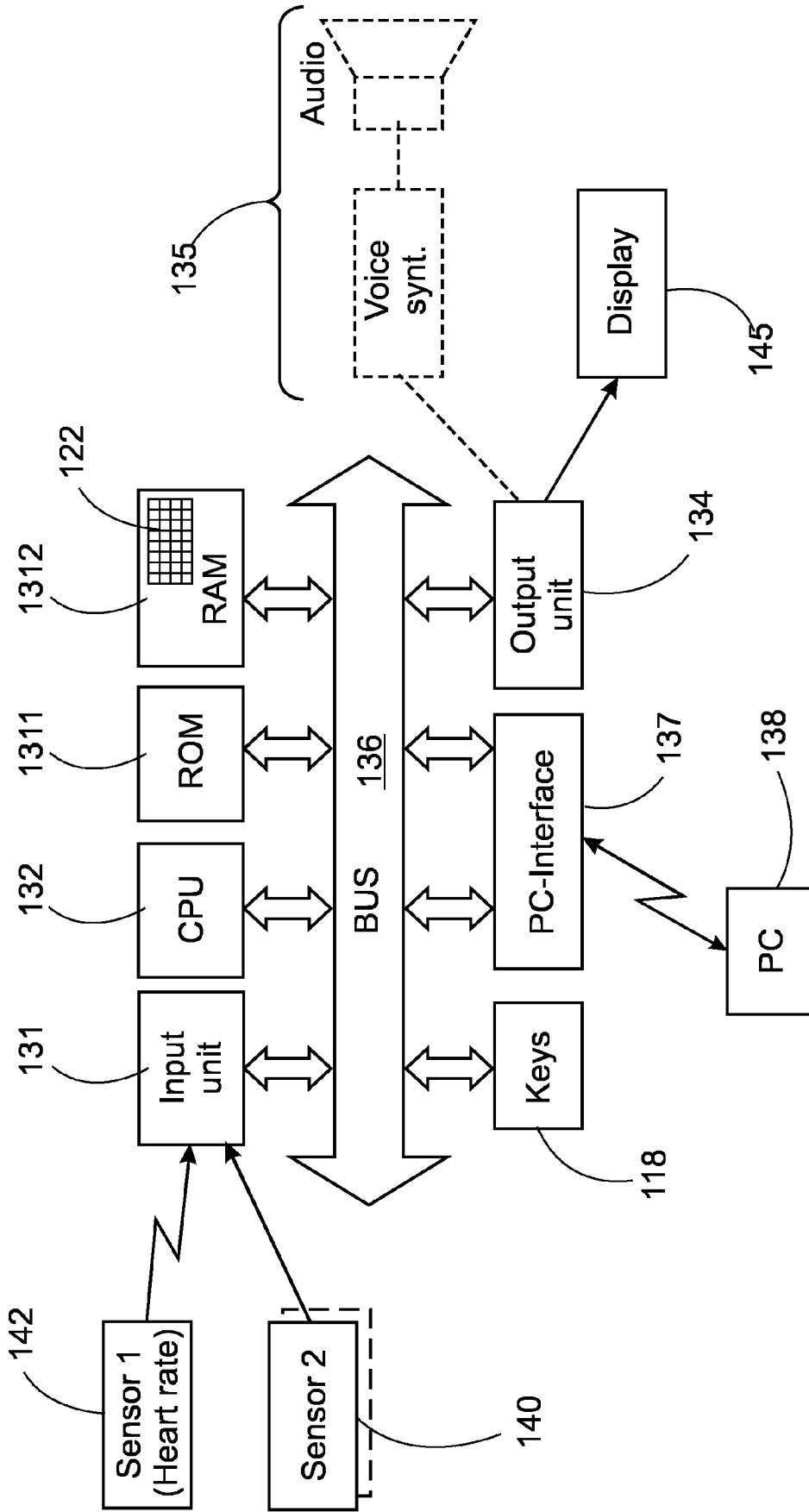


Fig.6



EUROPEAN SEARCH REPORT

Application Number
EP 19 21 1232

5

10

15

20

25

30

35

40

45

50

55

DOCUMENTS CONSIDERED TO BE RELEVANT			
Category	Citation of document with indication, where appropriate, of relevant passages	Relevant to claim	CLASSIFICATION OF THE APPLICATION (IPC)
A	US 2011/040193 A1 (SEPPANEN MIKKO [FI] ET AL) 17 February 2011 (2011-02-17) * figure 2d * * paragraph [0009] * * paragraph [0040] * * paragraph [0054] - paragraph [0055] * * paragraph [0068] * * paragraph [0070] - paragraph [0071] * * paragraph [0088] - paragraph [0092] *	1-10	INV. A61B5/22 A61B5/0205 A61B5/00
A,D	WO 2017/117183 A1 (UNIV NORTH CAROLINA CHAPEL HILL [US]; UNIV DUKE [US]) 6 July 2017 (2017-07-06) * figures 3A-D * * page 19, line 20 - line 24 * * page 20, line 5 - page 21, line 20 * * page 21, line 32 - page 22, line 2 *	1,10	
A	Sami Saalasti: "Neural Networks for Heart Rate Time Series Analysis", 31 December 2003 (2003-12-31), XP055131391, Retrieved from the Internet: URL:https://jyx.jyu.fi/dspace/bitstream/handle/123456789/13267/951391707X.pdf?sequence=1 [retrieved on 2014-07-24] * page 141, line 5 - line 14 * * page 142, line 28 - line 32 * * page 143, line 13 - line 24 *	1,10	TECHNICAL FIELDS SEARCHED (IPC) A61B G06N
A	US 2015/088006 A1 (RAPOPORT BENJAMIN I [US] ET AL) 26 March 2015 (2015-03-26) * figure 8 * * paragraph [0021] * * paragraph [0083] *	1,10	
The present search report has been drawn up for all claims			
Place of search The Hague		Date of completion of the search 10 January 2020	Examiner Oancea, A
CATEGORY OF CITED DOCUMENTS X : particularly relevant if taken alone Y : particularly relevant if combined with another document of the same category A : technological background O : non-written disclosure P : intermediate document T : theory or principle underlying the invention E : earlier patent document, but published on, or after the filing date D : document cited in the application L : document cited for other reasons & : member of the same patent family, corresponding document			

EPO FORM 1503 03/82 (P04C01)

**ANNEX TO THE EUROPEAN SEARCH REPORT
ON EUROPEAN PATENT APPLICATION NO.**

EP 19 21 1232

5 This annex lists the patent family members relating to the patent documents cited in the above-mentioned European search report.
The members are as contained in the European Patent Office EDP file on
The European Patent Office is in no way liable for these particulars which are merely given for the purpose of information.

10-01-2020

Patent document cited in search report	Publication date	Patent family member(s)	Publication date
US 2011040193 A1	17-02-2011	EP 2278920 A1	02-02-2011
		US 2011040193 A1	17-02-2011
		WO 2009133248 A1	05-11-2009

WO 2017117183 A1	06-07-2017	US 2019009134 A1	10-01-2019
		WO 2017117183 A1	06-07-2017

US 2015088006 A1	26-03-2015	NONE	

EPO FORM P0459

For more details about this annex : see Official Journal of the European Patent Office, No. 12/82

REFERENCES CITED IN THE DESCRIPTION

This list of references cited by the applicant is for the reader's convenience only. It does not form part of the European patent document. Even though great care has been taken in compiling the references, errors or omissions cannot be excluded and the EPO disclaims all liability in this regard.

Patent documents cited in the description

- WO 2017117183 A1 [0008]
- US 20160183886 A [0008]
- US 20160058367 A [0008]

Non-patent literature cited in the description

- **KARAVIRTA, L. ; TULPPO, M. P. ; NYMAN, K. ; LAAKSONEN, D. E. ; PULLINEN, T. ; LAUKKANEN, R. T. ; HAKKINEN, K.** Estimation of maximal heart rate using the relationship between heart rate variability and exercise intensity in 40-67 years old men. *European journal of applied physiology*, 2008, vol. 103 (1), 25-32 [0008]

专利名称(译)	确定用户免费运动最大心率的方法和系统		
公开(公告)号	EP3656304A1	公开(公告)日	2020-05-27
申请号	EP2019211232	申请日	2019-11-25
[标]申请(专利权)人(译)	FIRSTBEAT TECH		
申请(专利权)人(译)	FIRSTBEAT TECHNOLOGIES OY		
当前申请(专利权)人(译)	FIRSTBEAT TECHNOLOGIES OY		
[标]发明人	SAALASTI SAMI PULKKINEN AKI MYLLYMAKI TERO SEPPANEN MIKKO HAMALAINEN KAISA RUHANEN TUUKKA		
发明人	SAALASTI, SAMI PULKKINEN, AKI MYLLYMÄKI, TERO SEPPÄNEN, MIKKO HÄMÄLÄINEN, KAISA TOIVIAINEN, MAUNU RUHANEN, TUUKKA		
IPC分类号	A61B5/22 A61B5/0205 A61B5/00		
CPC分类号	A61B5/0205 A61B5/222 A61B5/4866 A61B5/681 A61B5/7264 A61B5/024 A61B5/0816 A61B5/4884 A61B5/7278 G16H20/30		
优先权	2018006002 2018-11-26 FI		
外部链接	Espacenet		

摘要(译)

本发明涉及一种用于确定最大心率的方法和系统，该最大心率被称为在自由进行的体育锻炼中的用户的HRmax，并使用具有软件和存储装置的设备（1311、1312）。在该方法中，连续计算多个变量的值（步骤14），并使用所述软件和存储装置在存储器中对其进行更新，所述变量包括：使用记录的心率（HR）值描述当前内部强度的变量，以及至少一个根据先前提供的强度模型，跟踪以下两个。该方法还包括以下步骤：选择最近记录的最大心率（HRmax）附近的心率（HR_i）的范围，以求出目标函数（f（））的最小值（步骤18），根据使用其中具有心率HR_i作为运行变量的强度模型在整个范围内对外部工作负荷和内部强度进行测量：并且在HR_i处获得给出所述最小值的最大心率估计值（HRmax_{est}），验证并存储所获得的最大心率值估计（HRmax_{est}）或根据选择的标准拒绝它（步骤20）。

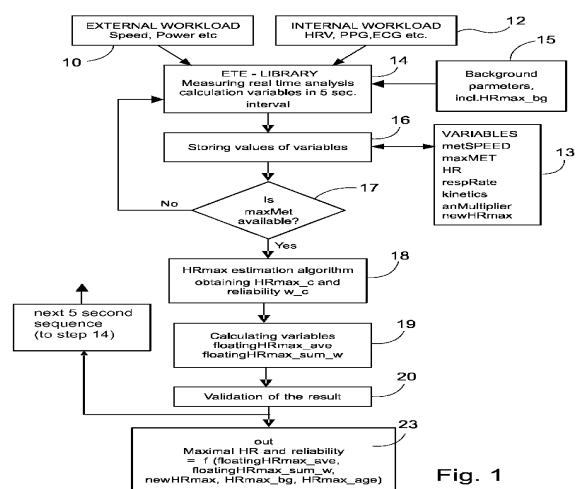


Fig. 1