

(19)  
(12)

(KR)  
(A)

(51) 。 Int. Cl. <sup>7</sup>  
H05B 33/10

(11)  
(43)

2002 - 0071660  
2002 09 13

(21) 10 - 2001 - 0011822  
(22) 2001 03 07

(71) 575

(72) 101 - 2006

(74) :

(54)

1 , TFT TFT / , ,  
; TFT TFT ,  
; TFT 가  
2 , ; 2 TFT ,  
TFT 가  
가 .

1 .

2 .

3 .

4 .

5 .

6 .

7 .

\*\*

\*

100...

110...

200... TFT

210... TFT

220...

250... 1 TFT

260... 2 TFT

가 , .

가 CRT LCD CRT , , LCD  
CRT LCD , , 가가 , LCD .

ve matrix) 가 가 , (passive matrix) (acti  
TFT 가 가 ,  
가 가  
LCD TFT 가  
TFT  
(coplanar) CMOS TFT /  
TFT  
CMOS TFT TFT /  
8 가 가 가  
가 , 가  
가 , TFT /  
가 ,  
TFT TFT / , 1 ; ;  
TFT TFT TFT / 가 ;  
; TFT , 2 ; 2 TFT  
TFT가 가 가 1 TFT 2  
1 1 TFT 2 TFT /  
1 TFT 1 2 TFT  
1 TFT 2 TFT  
1 TFT 2 TFT 1TFT  
2TFT

, 2 , 1 1 TFT 2 TFT /  
 , 2 TFT 1 TFT  
 , 2 TFT TFT TFT, 1 TFT  
 2 2 TFT 가 2 TFT  
 2 TFT 2 TFT  
 1 (100) , (100)  
 (120), (120) (110) , (110) ( )  
 (110) 가 (111) , (111) (111)  
 (111) 가 (112) TFT(200)(210) / 가 (112) 가 (113)  
 (111) 가 (112) (113) (120) 2  
 TFT(200)(210) (220) (130) TFT(250)  
 (260)가 (110)  
 (200) , (120) TFT(200)(210) (113) TFT  
 0) 가 (22) (220)  
 TFT(210) (220) TFT(210)  
 (121)  
 5  
 (120) (121) TFT(200)(210) (220)가 (100)  
 (121) (130) , TFT(200)(210) (201)(211)  
 (202)(212) TFT(220)(210) (203)(213)  
 (240) , (204)(214) ,  
 (220) (100) TFT(200) TFT(210) (1  
 50) (222) (222) (223) (223)  
 (221)

		TFT(250)(260)가		TFT(250)(260)	(100)
		CMOS TFT(250)(260)			
가	TFT(250)(260)	(120)		(113), (111),	1 가 (11
2)	(120)				
	TFT(250)(260)	(100)	(251)(261)	(252)(262)	
	(251)(261)		(252)(262)	(253)(263)	
	(253)(263)	(255)(265)	(255)(265)		
(254)(264)		(254)(264)	(240)		
(251)(261)	(252)(262)	(110)		(151)(152)(153)(154)	
					6 가
0)	1	1	(100)		(10
SiO <sub>2</sub>	( )		(203)(213)(253)(263)		
			ITO IZO		
		TFT(200)	(201)	(202)	
(220)	(222)	TFT(210)	(212)	(130)	
(131)	1	TFT(250)	2	TFT(260)	(251)(261)
262)					(252)(
			3	(100)	
0)(250)(260)		(201)(211)(251)(261)		TFT(200)(21	
		TFT(200)(210)(250)(260)	(202)(212)(252)(262)		
			(203)(213)(253)(263)		
			4	(100)	
TFT(250)	(251)	(252),	2	TFT(210)	(130) 1
(262)	(150)(151)(152)(153)(154)			TFT(260)	(261)
	TFT(200)(210)(250)(260)가		(203)(213)(253)(254)		
(205)(215)(255)(265)	(220)		(222)		(223)



01)(211)(251)(261) (131) (202)(212)(252)(262) (131) TFT (2  
1 2

TFT

TFT

, 가 가 .

(57)

1.

1 ; TFT TFT / ,

TFT TFT ;

; 가

TFT , TFT  
2 ;

2

2.

T 1 , 가 가 1 TF  
2 TFT가 .

3.

2 , 1 1 TFT 2 TFT /

4.

3 , 1 TFT 1 2 TFT 2 TFT  
1 TFT 2 TFT

5.

4 , 1 TFT 2 TFT 1TF  
T 2TFT

6.

5 , 2 , 1 TFT 2 TFT /  
1 TFT 1 TFT

7.

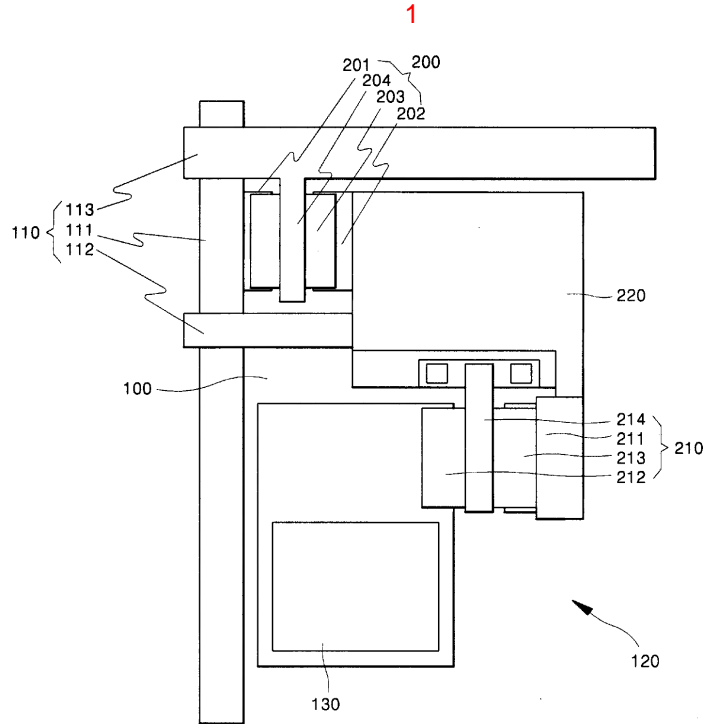
6 , 2 TFT TFT, 1 TFT

8.

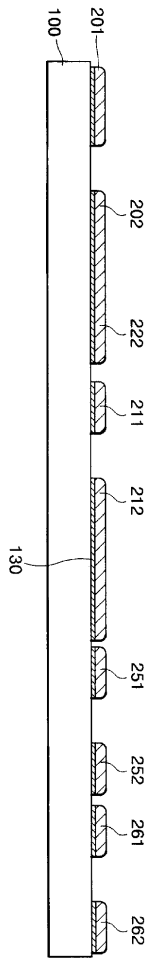
6 7 2 , 2 가  
2 TFT 2 TFT

9.

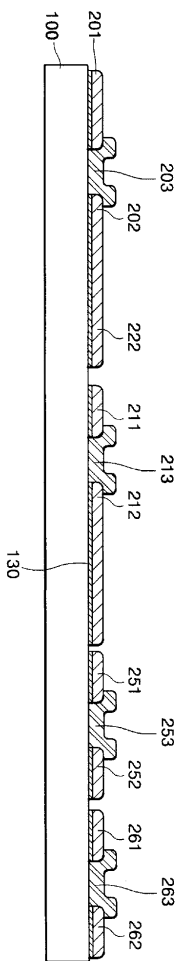
8 , 2 TFT 2 TFT



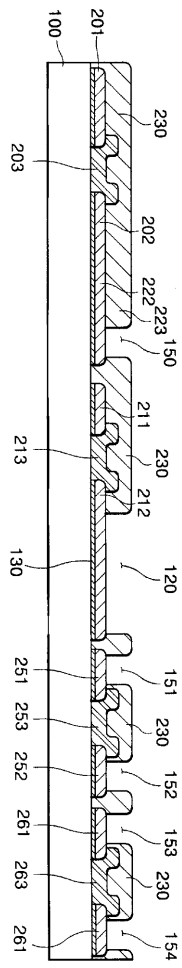
2



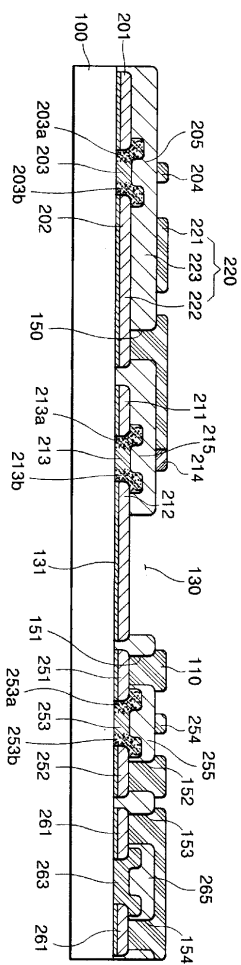
3



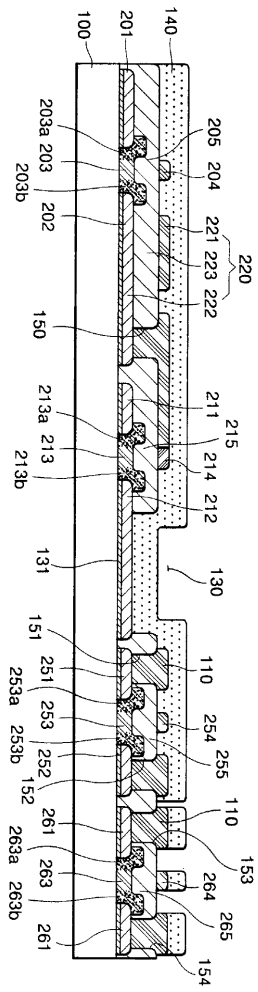
4



5



6



7

