

(19) World Intellectual Property Organization  
International Bureau



(43) International Publication Date  
21 May 2004 (21.05.2004)

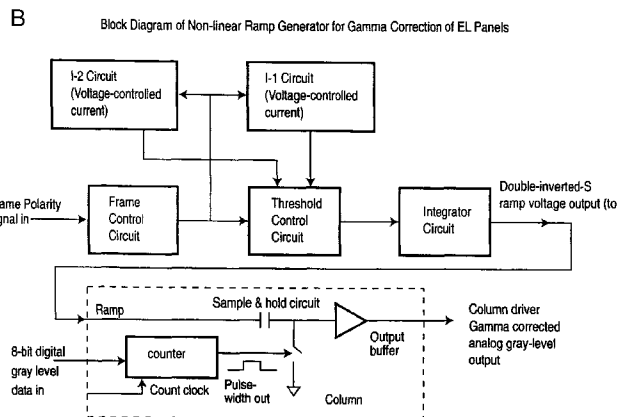
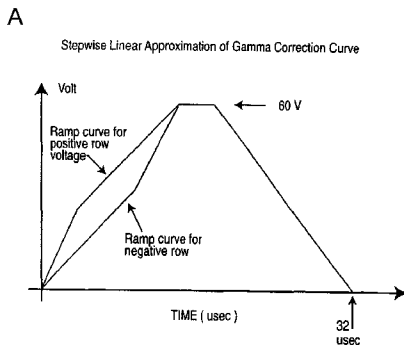
PCT

(10) International Publication Number  
WO 2004/042689 A1

- (51) International Patent Classification<sup>7</sup>: G09G 3/30
- (21) International Application Number: PCT/CA2003/001693
- (22) International Filing Date: 4 November 2003 (04.11.2003)
- (25) Filing Language: English
- (26) Publication Language: English
- (30) Priority Data: 60/423,569 4 November 2002 (04.11.2002) US
- (71) Applicant: IFIRE TECHNOLOGY INC. [CA/CA]; 10102 - 114 Street, Fort Saskatchewan, Alberta T8L 3W4 (CA).
- (72) Inventor: CHENG, Chun-Fai; 1072 Lockwood Circle, Newmarket, Ontario L3X 1M2 (CA).
- (74) Agent: PERRY, Stephen, J.; Sim & McBurney, 330 University Avenue, 6th Floor, Toronto, Ontario M5G 1R7 (CA).
- (81) Designated States (national): AE, AG, AL, AM, AT, AU, AZ, BA, BB, BG, BR, BY, BZ, CA, CH, CN, CO, CR, CU, CZ, DE, DK, DM, DZ, EC, EE, ES, FI, GB, GD, GE, GH, GM, HR, HU, ID, IL, IN, IS, JP, KE, KG, KP, KR, KZ, LC, LK, LR, LS, LT, LU, LV, MA, MD, MG, MK, MN, MW, MX, MZ, NI, NO, NZ, OM, PG, PH, PL, PT, RO, RU, SC, SD, SE, SG, SK, SL, SY, TJ, TM, TN, TR, TT, TZ, UA, UG, UZ, VC, VN, YU, ZA, ZM, ZW.
- (84) Designated States (regional): ARIPO patent (BW, GH, GM, KE, LS, MW, MZ, SD, SL, SZ, TZ, UG, ZM, ZW), Eurasian patent (AM, AZ, BY, KG, KZ, MD, RU, TJ, TM), European patent (AT, BE, BG, CH, CY, CZ, DE, DK, EE, ES, FI, FR, GB, GR, HU, IE, IT, LU, MC, NL, PT, RO, SE, SI, SK, TR), OAPI patent (BF, BJ, CF, CG, CI, CM, GA, GN, GQ, GW, ML, MR, NE, SN, TD, TG).

[Continued on next page]

(54) Title: METHOD AND APPARATUS FOR GRAY-SCALE GAMMA CORRECTION FOR ELECTROLUMINESCENT DISPLAYS



(57) Abstract: A circuit and method of driving a display panel requiring gray scale control wherein the voltage applied to a row of pixels is equal to the sum of voltages of opposite sign with respect to ground applied respectively to the row electrode and column electrodes whose intersection with the row defines the pixels. Gray scale is realized through modulation of the voltage applied to the column electrodes. Typically for video application, 256 individual gray levels are required corresponding to luminance levels ranging from zero (no emissive luminance) to full luminance. The required luminance for each gray level is not a linear function of the gray level number but rather corresponds to an approximate quadratic function of this number. The present invention facilitates generation of luminance values for each gray level that approximates this functional dependence (i.e. Gamma corrected) with a non-linear voltage ramp terminated by a digital clock having 256 (8 bit) resolution. The voltage at the ramp termination is held at a constant value and fed to the output buffer of the gray scale drivers for the display columns.

WO 2004/042689 A1



**Published:**

- with international search report
- before the expiration of the time limit for amending the claims and to be republished in the event of receipt of amendments

*For two-letter codes and other abbreviations, refer to the "Guidance Notes on Codes and Abbreviations" appearing at the beginning of each regular issue of the PCT Gazette.*

**METHOD AND APPARATUS FOR GRAY-SCALE GAMMA CORRECTION FOR  
ELECTROLUMINESCENT DISPLAYS**

**FIELD OF THE INVENTION**

5

The present invention relates generally to flat panel displays, and more particularly to a method and apparatus for driving a display panel requiring gray scale control by modulation of the voltage applied to the column electrodes with a non-linear voltage ramp.

**BRIEF DESCRIPTION OF THE DRAWINGS**

The Background of the Invention and Detailed Description of the Preferred Embodiment are set forth herein below with reference to the following drawings, in which:

15 Fig. 1 is a plan view of an arrangement of rows and columns of pixels of an electroluminescent display, in accordance with the Prior Art;

Fig. 2 is a cross section through a single pixel of the electroluminescent display of Figure 1;

20

Fig. 3 is a luminance versus applied voltage curve for the electroluminescent pixel of Figure 1;

25 Fig. 4 shows voltage ramp curves for negative row voltage and for positive row voltage to generate gray scale luminance from the luminance versus voltage curve of Figure 3;

Fig. 5 shows a stepwise linear approximation of the Gamma correction curve of Fig 4;

30 Fig. 6 is a block diagram of a non-linear ramp generator for Gamma correction according to the preferred embodiment;

Fig. 7 is a schematic circuit diagram for a successful prototype of the non-linear ramp generator of Figure 6; and

5 Fig. 8 shows luminance versus gray level curves for a 17 inch thick dielectric electroluminescent display both using the Gamma correction circuit of Figure 7 and without using the Gamma correction circuit.

### 10 BACKGROUND OF THE INVENTION

Electroluminescent displays are advantageous by virtue of their low operating voltage with respect to cathode ray tubes, their superior image quality, wide viewing angle and fast response time over liquid crystal displays, and their superior gray scale capability and thinner profile than plasma display panels.

15

As shown in Figures 1 and 2, an electroluminescent display has two intersecting sets of parallel electrically conductive address lines called rows (ROW 1, ROW 2, etc.) and columns (COL 1, COL 2, etc.) that are disposed on either side of a phosphor film encapsulated between two dielectric films. A pixel is defined as the intersection point  
20 between a row and a column. Thus, Figure 2 is a cross-sectional view through the pixel at the intersection of ROW 4 and COL 4, in Figure 1. Each pixel is illuminated by the application of a voltage across the intersection of row and column defining the pixel.

Matrix addressing entails applying a voltage below the threshold voltage to a row  
25 while simultaneously applying a modulation voltage of the opposite polarity to each column that bisects that row. The voltages on the row and the column are summed to give a total voltage in accordance with the illumination desired on the respective sub-pixels, thereby generating one line of the image. An alternate scheme is to apply the maximum sub-pixel voltage to the row and apply a modulation voltage of the same polarity to the columns. The  
30 magnitude of the modulation voltage is up to the difference between the maximum voltage

and the threshold voltage to set the pixel voltages in accordance with the desired image. In either case, once each row is addressed, another row is addressed in a similar manner until all of the rows have been addressed. Rows that are not addressed are left at open circuit.

5           The sequential addressing of all rows constitutes a complete frame. Typically, a new frame is addressed at least about 50 times per second to generate what appears to the human eye as a flicker-free video image.

10           In order to generate realistic video images with flat panel displays, it is important to provide the required luminosity ratios between gray levels where the driving voltage is regulated to facilitate gray scale control. This is particularly true for electroluminescent displays where gray scale control is exercised through control of the output voltage on the column drivers for the display.

15           Traditional thin film electroluminescent displays employing thin dielectric layers that sandwich a phosphor film interposed between driving electrodes are not amenable to gray scale control through modulation of the column voltage, due to the very abrupt and non-linear nature of the luminance turn-on as the driving voltage is increased. By way of contrast, electroluminescent displays employing thick high dielectric constant dielectric layered pixels  
20           have a nearly linear dependence of the luminance above the threshold voltage, and are thus more amenable to gray scale control by voltage modulation. However, even in this case if the gray scale voltage levels are generated by equally spaced voltage levels then the luminance values of the gray levels are not in the correct ratios for video applications.

25           The gray level information in a video signal is digitally encoded as an 8 bit number. These digitally coded gray levels are used to generate reference voltage levels  $V_g$  that facilitate the generation of luminance levels ( $L_g$ ) for each gray level in accordance with an empirical relationship of the form:

$$L_g = f(V_g) = A n^\gamma \quad (\text{Equation 1})$$

30           where  $f(V_g)$  represents that the luminance is a function of the voltage applied to a

pixel and  $A$  is a constant,  $n$  is the gray level number and  $\gamma$  is typically between 2 and 2.5.

An electroluminescent (EL) display driver with gray scale capability resembles a digital-to analog (D/A) device with an output buffer. The purpose is to convert incoming  
5 gray scale 8-bit digital data from the video source to an analog output voltage for panel driving. There are various types of gray scale drivers, each employs a different method of performing the necessary digital-to-analog conversion. The present invention is related to the type of gray scale drivers that use a linear ramping voltage as a means of performing the D/A conversion. For this type of drivers, the digital gray level code is first converted to a pulse-  
10 width through a counter operated by a fixed frequency clock. The time duration of this pulse-width is a representation of, and corresponds to, the gray level digital code. The pulse-width output of the counter controls a capacitor sample-and-hold circuit which operates in conjunction with an externally generated linear voltage ramp to achieve the pulse-width to voltage conversion. Since the linear ramp has a linear relationship between the output  
15 voltage and time, the pulse-width representation of the digital code therefore generates a linear gray level voltage at the driver output. The luminance created for each level is then dependent on the relationship between the voltage applied to a pixel and the pixel luminance, which is the basic electro-optical characteristic of the particular panel. This luminance-voltage characteristic is normally different from the ideal characteristic, and therefore Gamma  
20 correction is necessary.

The relationship between the voltage applied to a pixel and its luminance is typified by the curve in Figure 3. The luminance begins to rise above the threshold voltage in a nonlinear fashion for the first few volts above the threshold, and then rises in an approximate  
25 linear fashion before saturating at a fixed luminance. The portion of the curve used for display operation is the initially rising portion and the linear portion. The effects of differential loading of the driver outputs complicate the relationship. To negate the effect of variable loading and to improve the energy efficiency of the display, a driver employing a sinusoidal drive voltage with a resonant energy recovery feature is typically employed. Such  
30 a driver is disclosed in U.S. Patent Applications 09/504,472 and 10/036,002, the contents of

which are incorporated herein by reference. However, it is nonetheless desirable to tailor the output voltage for the gray levels to generate a gray scale response similar to that described by the empirical relationship given by equation 1.

5

According to the prior art, circuits are known for gray scale compensation in flat panel displays.

10 For example, U.S. Patent 5,652,600 (Khormaei et al) discloses a gray-scale correction system for EL displays which involves illuminating first selected pixel electrodes with data signals during a first subframe time period of the received image and thereafter energizing a second set of selected pixel electrodes with data signals during the next subframe time period where the first and second illumination signals have predetermined characteristics that differ  
15 from each other. The structure of the EL display is complex, and does not suggest the use of a reference voltage generator that employs a non-linear voltage ramp to generate gray-scale levels having correct luminance levels in an EL display.

U.S. Patent 5,812,104 (Kapoor et al) discloses the use of different levels of pixel  
20 luminance to achieve correct gray-scaling in an EL display. The '104 patent acknowledges the problem of prior art ramp generators to adequately vary the rate of the ramped voltage signal from a constant value throughout the ramp. In response to that, the '104 patent sets forth a gray-scale stepped ramp voltage generator constructed so that various step sizes may be obtained during each of the voltage steps. The disclosed circuit is very complex and is not  
25 capable of generating an intensity dynamic range of 256 x 256 ( $\gamma = 2.0$  per equation 1) between lowest and highest gray levels. Further, the use of TFEL devices is not amenable to achieving the gray levels to meet television standards, as set forth above.

U.S. Patent 6,417,825 (Stewart et al) discloses an EL display with gray-scale and a  
30 ramp voltage that may be made non-linear. However, the '825 patent is applicable only to

active matrix EL and to frame rate modulation, not passive matrix EL and voltage modulation.

The following prior art is of background interests to the present invention:

5

U.S. Patent No. 5,227,863 (Bilbrey et al)

U.S. Patent 5,550,557 (Kapoor et al)

## 10 SUMMARY OF THE INVENTION

According to the present invention, Gamma correction of an EL panel is conveniently effected at the D/A conversion stage of a gray scale driver by replacing the conventional linear voltage ramp with a special 'double-inverted-S' non-linear voltage ramp.

15

Thus, a gray scale reference voltage generator is set forth herein that employs a non-linear voltage ramp in combination with a counter and a sample-and-hold circuit to achieve digital data to gray level conversion with proper Gamma correction.. The shape of the voltage ramp is defined to generate gray scale levels according to equation 1 taking into account the shape of the luminance versus voltage curve for a pixel, as shown in Figure 3 for a thick dielectric electroluminescent display. The optimum curve of the voltage ramp therefore has an inverted s-shape, with a convex shape (negative second derivative with respect to time) for an initial portion of the voltage range and a concave shape (positive second derivative with respect to time) for the remaining portion of the ramp to maximum luminance. The non-linear voltage ramp of the present invention permits the use of a clock that is required to delineate only 256 time intervals for fully defining 256 gray levels. The voltage ramp also simplifies the process of generating a Gamma corrected gray level voltage at the driver output in accordance with gray level data from the incoming video signal.

25  
30

Other and further advantages and features of the invention will be apparent to those

skilled in the art from the following detailed description thereof, taken in conjunction with the accompanying drawings introduced herein above.

## DESCRIPTION OF THE PREFERRED EMBODIMENTS

5

With reference to Figures 1, 2 and 3, and in contrast with the prior art, the present invention is optimized for use with an electroluminescent display having a thick film dielectric layer. A typical curve showing luminance versus driving voltage pulse amplitude for such a display is shown in Figure 3. Ideal gray level generating voltage ramp functions for positive and for negative row voltages generated for the luminance curve of Figure 3 are shown in Figure 4, as discussed in greater detail below.

10

As shown in the block diagram of Figure 6, the gray-scale circuit according to the present invention uses a non-linear voltage ramp to generate reference voltages to define specified gray levels on the columns, as discussed in greater detail below.

15

In operation, row electrodes are sequentially addressed to generate the complete frame image. As discussed above, voltages are applied essentially simultaneously to the columns of each addressed row to create the pixel luminosities required to generate the image for each frame. In order to eliminate time-averaged electric potential across any one pixel (a condition that shortens the life of a display due to degradation mechanisms associated with electric field assisted diffusion of chemical species in the pixel), the rows are addressed with alternating electric polarity. However, each of the display column drivers has a unipolar output, thereby necessitating a special addressing scheme.

25

Specifically, when a selected row is addressed with a negative row voltage, the magnitude of that voltage is equal to the threshold voltage so that no light is emitted from any pixel on that row unless there is an additive column voltage also applied to that pixel. When a selected row is addressed with a positive voltage, the magnitude of that voltage is equal to the voltage required for maximum luminance and voltages from the columns are subtracted

30

from that voltage to achieve the desired gray level. These requirements must be reconciled with the use of a voltage ramp starting from zero volts to generate the gray scale reference voltages. The method of reconciliation according to the present invention is to convert the incoming digital 8 bit gray-scale digits to their complement values ( i.e. replace binary zeros with ones and binary ones with zeroes) when the row voltage is positive so that the gray-scale level and the corresponding luminance level bear an inverse relation to one another.

This correction by itself, however, is insufficient to achieve gray scale fidelity, and the non-linear ramp function established for a negative row voltage must also be modified for use with a positive row voltage according to equation 2 given by  $V_{g\text{ pos.}}(t) = V_m - V_{g\text{ neg.}}(t_m - t)$  where  $V_{g\text{ pos.}}(t)$  is the ramp voltage as a function of the running time for the counter for positive row voltage and  $V_{g\text{ neg.}}(t_m - t)$  is the established ramp voltage function for a negative row voltage expressed as a function of the difference between the time  $t_m$  for the ramp to reach the voltage value  $V_m$  for maximum luminance and the running time for the counter. Graphically, the two functions  $V_{g\text{ pos.}}(t)$  and  $V_{g\text{ neg.}}(t)$  are rotated 180° with respect to one another. Thus, for the luminance versus voltage curve of Figure 3, both functions assume a convex shape (positive second derivative with respect to time) for the initial portion of the curve and a concave shape (negative second derivative with respect to time) for the remaining portion of the curve to a maximum value of  $t = t_m$ . The two functions derived for the luminance curve of Figure 3 are shown in Figure 4.

There are various techniques that can be used to generate the appropriate non-linear voltage ramp functions  $V_{g\text{ pos.}}(t)$  and  $V_{g\text{ neg.}}(t)$ . According to the preferred embodiment of Figure 6, two time-dependent voltage feedback controlled current sources (I-1 and I-2 circuits) are used to generate the two segments of the non-linear ramp. The I-1 current source has a current magnitude that decreases with time, and the I-2 current source has a magnitude that increases with time. By controlling the proper timing of switching between the two current sources, as determined by the Threshold Control Circuit, and by directing the currents to an Integrator Circuit, an approximation to the voltage ramp curve of Figure 4 is generated.

The output of the Integrator Circuit is applied to the conventional Column Driver comprising a counter and Sample-and-Hold (S/H) circuit.

5 The shape of the generated non-linear ramp voltage can be adjusted or fine-tuned for a particular panel characteristic by altering the functional parameters of the current sources, as discussed in greater detail below with reference to Figure 7.

In addition, a Frame Polarity Control Circuit is included in the ramp generator to select between the two ramp curves for positive and negative row voltages / frames.

10

Closer approximations to the curves of Figure 4 or similar curves for displays having different luminance versus applied voltage characteristics can be generated using three or more current sources with different time-dependent functions selected sequentially in proper timing and sequence, or connected in various parallel combinations.

15

A simplified alternative to the preferred embodiment of Figure 6 is to substitute the two time-dependent variable current sources with two constant (time-independent) current sources. This results in a stepwise ramp curve similar to that of Figure 5. While more simple in design, the stepwise ramp provides gray scale correction with degraded performance as compared to the double-inverted-S ramp of Figure 4.

20

A successful prototype of the Double-inverted-S Ramp Generator is shown in Figure 7. The dashed line blocks represent circuitry that provide the functionality of the blocks in Figure 6. This circuit also includes control inputs for independent adjustments of three critical parameters for each of the non-linear ramps for both negative and positive row polarities, and also the timing for automatic switching between the two non-linear ramps as controlled by the frame polarity synchronization pulse from the display system. The three critical parameters are the curvature of the first segment of the non-linear ramp (adjusted through R15 and R16 of Figure 7), the transition voltage level for switching between the two non-linear ramp segments (adjusted through R9 and R10 of Figure 7), and the curvature of

25  
30

the second segment of the non-linear ramp (adjusted through R5 and R6 of Figure 7). A ramp reset signal derived from the system control electronics is used to reset and synchronize the non-linear ramp for every scan cycle of the display.

5           The procedure for the adjustment and optimization of the non-linear ramp for each display panel is first to generate the luminance versus gray-level characteristic of a particular panel using the conventional single linear ramp. An ideal characteristic curve is then derived based on equation 1 and the luminance of the panel at the maximum gray level. With the assumed value of 2 assigned to  $\alpha$  in equation 1, the appropriate value of 'A' can be generated  
10 by trial and error (for example using Microsoft EXCEL software). With the one-to-one mapping between the panel characteristic curve and the ideal characteristic curve, an ideal shape of the non-linear ramp can be generated. The three critical parameters of the non-linear ramp are adjusted based on the generated calculated ideal ramp.

15           A gray-scale correcting circuit was built for a 17 inch 480 by 640 pixel VGA format diagonal thick film colour electroluminescent display using Hitachi ECN2103 row drivers and Supertex HV623 column drivers. Each pixel had independent red, green and blue sub-pixels addressed through separate columns and a common row. The threshold voltage for each of the red, green and blue sub-pixels of this display was 140 volts. The circuit was used  
20 in conjunction with an energy recovery resonant sine-wave drive circuit with a compensating circuit to eliminate gray level variations due to the variable capacitive impedance of the panel as exemplified in US patent applications 09/504472 and 10/036002.1

          Figure 8 shows the relationship between luminance and gray-level number for the  
25 successful prototype 17" display with a conventional single linear ramp compared to one with the non-linear ramps for positive and for negative row voltages of the instant invention. An ideal characteristic curve is also provided for comparison. The characteristic curve generated using the non-linear ramps shows very close proximity to the ideal characteristic.

30           Although multiple specific embodiments of the invention have been described herein,

it will be understood by those skilled in the art that variations may be made thereto without departing from the spirit of the invention or the scope of the appended claims.

## CLAIMS:

1. A gray scale reference voltage generator for connection to column drivers of a thick dielectric electroluminescent display, comprising:
  - 5 a counter for receiving gray level data from an incoming video signal and in response counting for a time interval proportional to said gray level data; and  
a non linear voltage ramp connected to said counter for generating a ramping voltage for application to said column drivers during said time interval, wherein said ramping voltage conforms to a curve having an inverted s-shape, with an initial convex portion followed by a concave portion so as to compensate for luminance versus voltage characteristics of said thick dielectric electroluminescent display.
- 10 2. The gray scale reference voltage generator of claim 1, wherein said initial convex portion conforms generally to a negative second derivative with respect to said time interval, and said concave portion conforms generally to a positive second derivative with respect to said time interval.
3. The gray scale reference voltage generator of claim 1, wherein said counter is an 8-bit counter for delineating said time interval to fully define 256 gray levels.
- 20 4. The gray scale reference voltage generator of claim 1, wherein said ramping voltage for a negative row voltage is  $V_{g\ neg}(t_m - t)$  expressed as a function of the difference between the time  $t_m$  for the ramping voltage to reach a maximum luminance voltage value  $V_m$  at the end of said time interval, and said ramping voltage for a positive row voltage is  $V_{g\ pos}(t)$ , where  $V_{g\ pos}(t) = V_m - V_{g\ neg}(t_m - t)$ .
- 25 5. The gray scale reference voltage generator of claim 4, wherein said non-linear voltage ramp further comprises an integrator circuit and at least two current sources for generating and applying different currents to said integrator circuit such that when a first one of said current sources is connected to said integrator circuit a first segment of said ramping voltage
- 30

is generated, when both of said current sources are connected in parallel to said integrator circuit a second segment of said ramping voltage is generated, and when the second one of said current sources is connected to said integrator circuit a final segment of said ramping voltage is generated.

5

6. The gray scale reference voltage generator of claim 5, wherein said first one of said current sources generates a current that decreases during said time interval, and said second one of said current sources generates a current that increases during said time interval.

10

7. The gray scale reference voltage generator of claim 5, wherein said at least two current sources are time-dependent voltage feedback controlled current sources.

8. The gray scale reference voltage generator of claim 5, wherein said at least two current sources are constant current sources.

15

9. The gray scale reference voltage generator of claim 5, wherein said non-linear voltage ramp further comprises a threshold control circuit for controlled switching between said two current sources.

20

10. The gray scale reference voltage generator of claim 5, wherein said non-linear voltage ramp further comprises a frame polarity control circuit for to select between said ramping voltage for a positive row voltage and said ramping voltage for a negative row voltage.

25

11. The gray scale reference voltage generator of claim 5, wherein said current sources further include control inputs for controlling curvature of said first and second segments respectively.

30

12. The gray scale reference voltage generator of claim 9, wherein said threshold control circuit further includes a control input for setting a transition voltage between said first and

second segments of said ramping voltage.

Figure 1

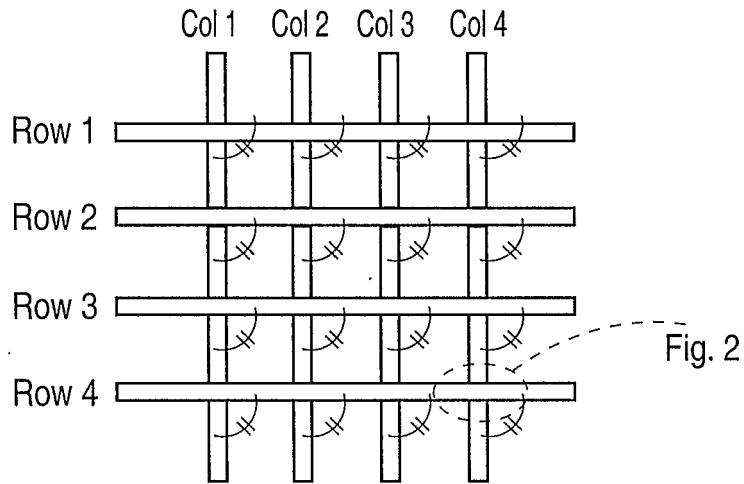


Figure 2

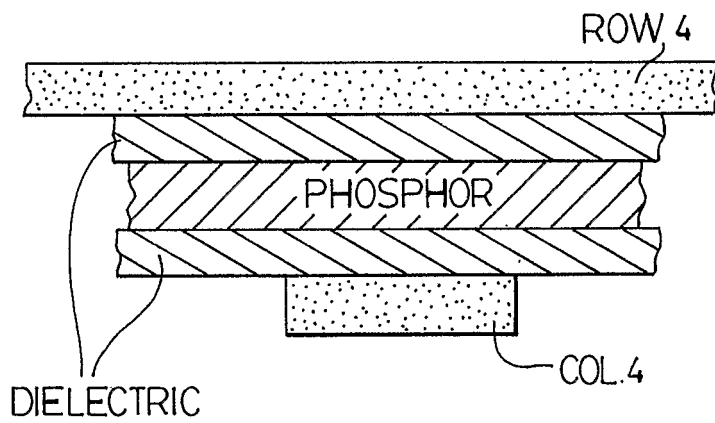


Figure 3

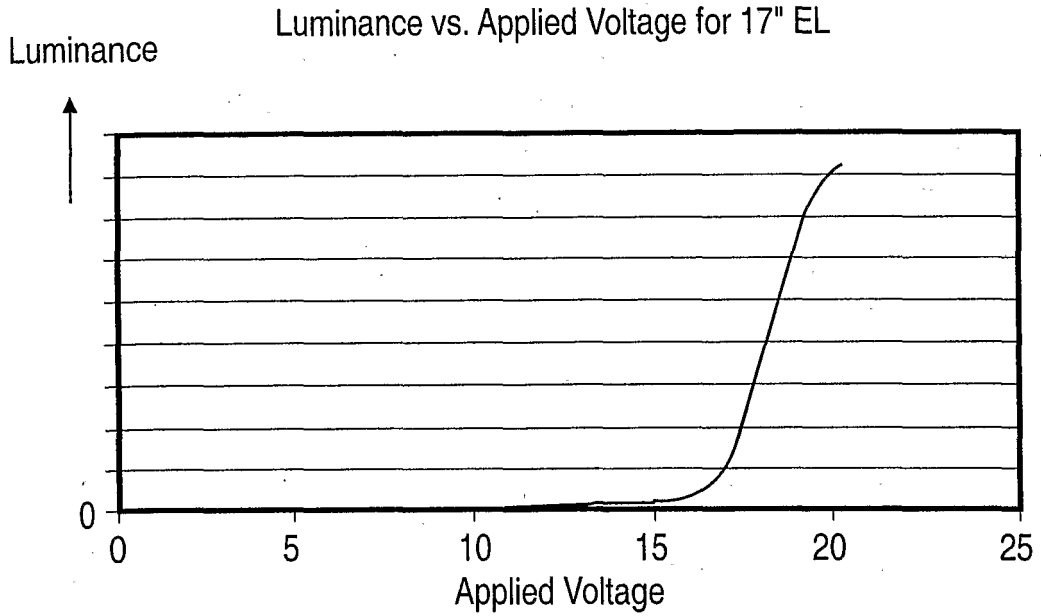


Figure 4

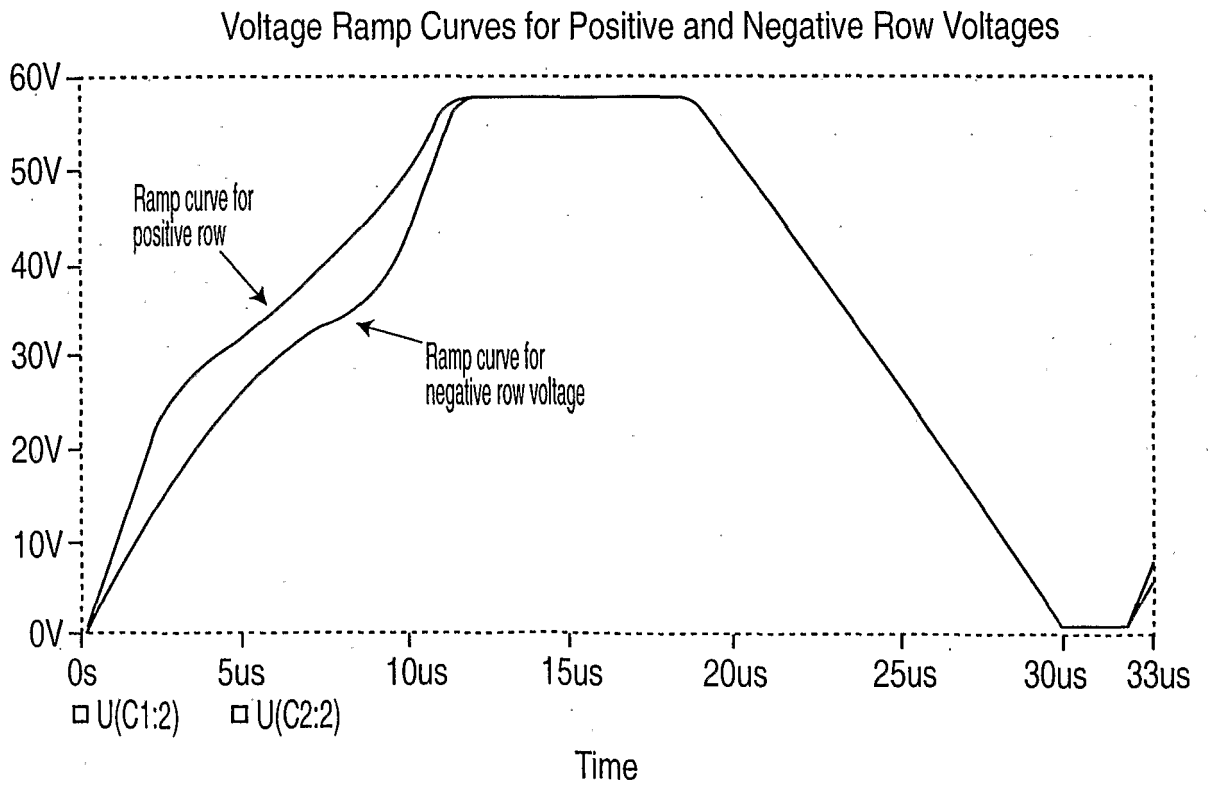


Figure 5

Stepwise Linear Approximation of Gamma Correction Curve

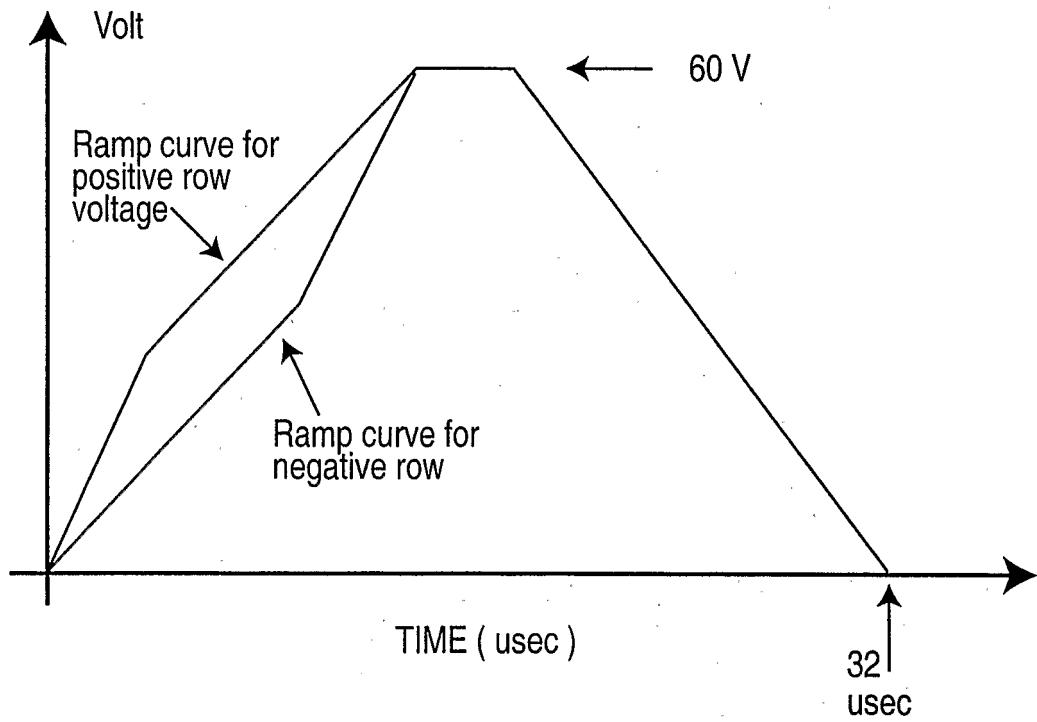


Figure 6

Block Diagram of Non-linear Ramp Generator for Gamma Correction of EL Panels

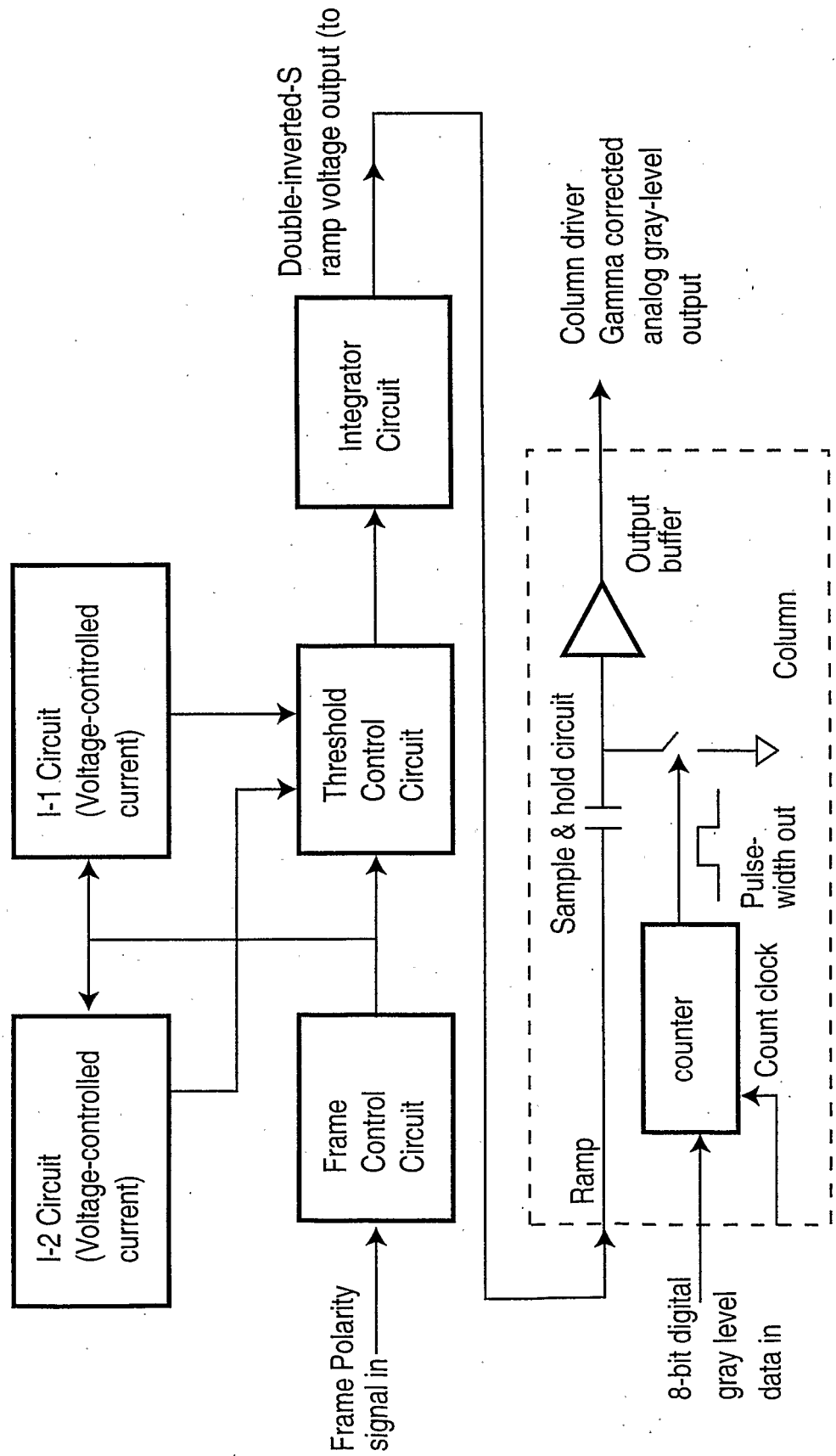


Figure 7: Double Inverted-S Ramp Generator for Gamma Correction

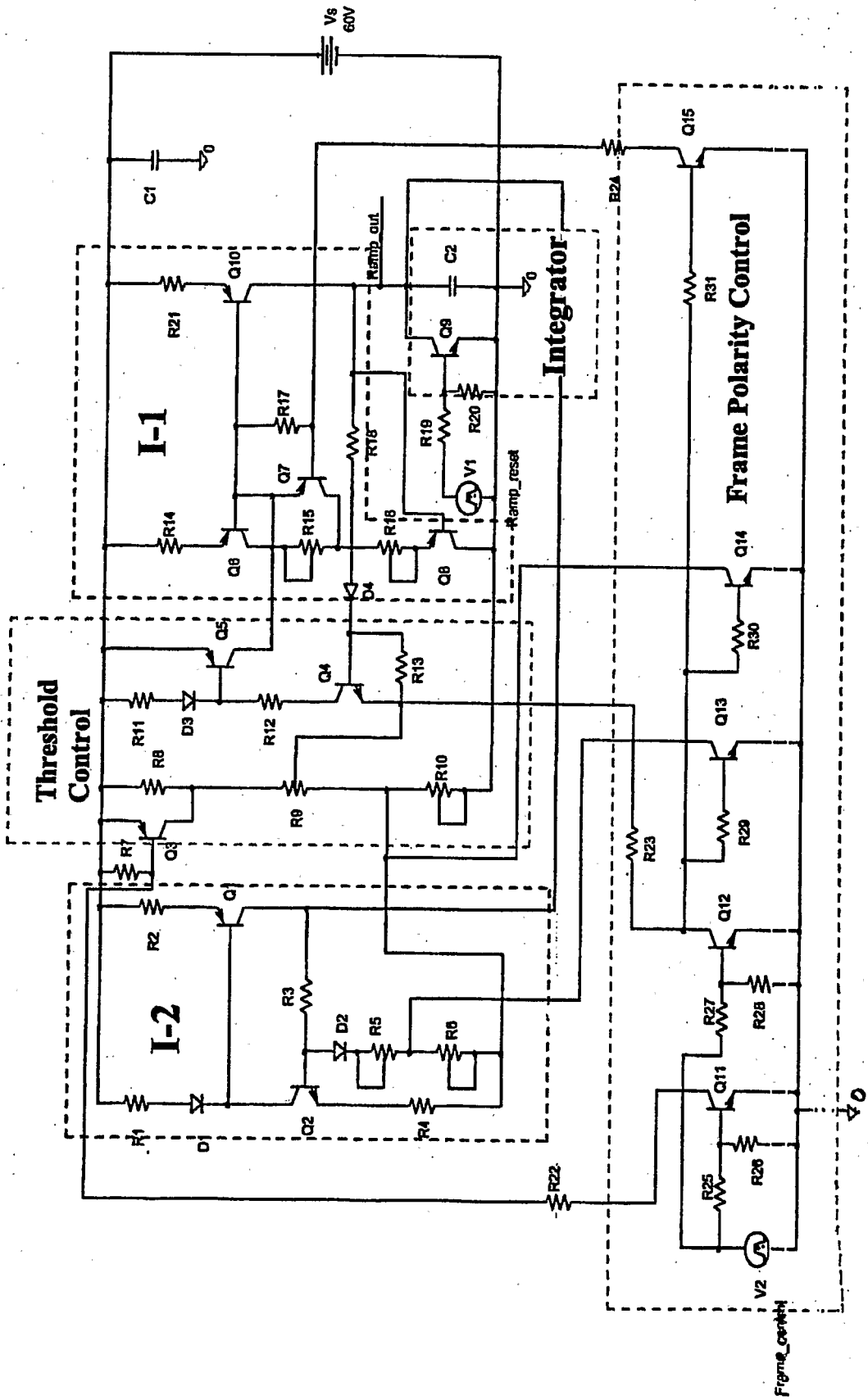
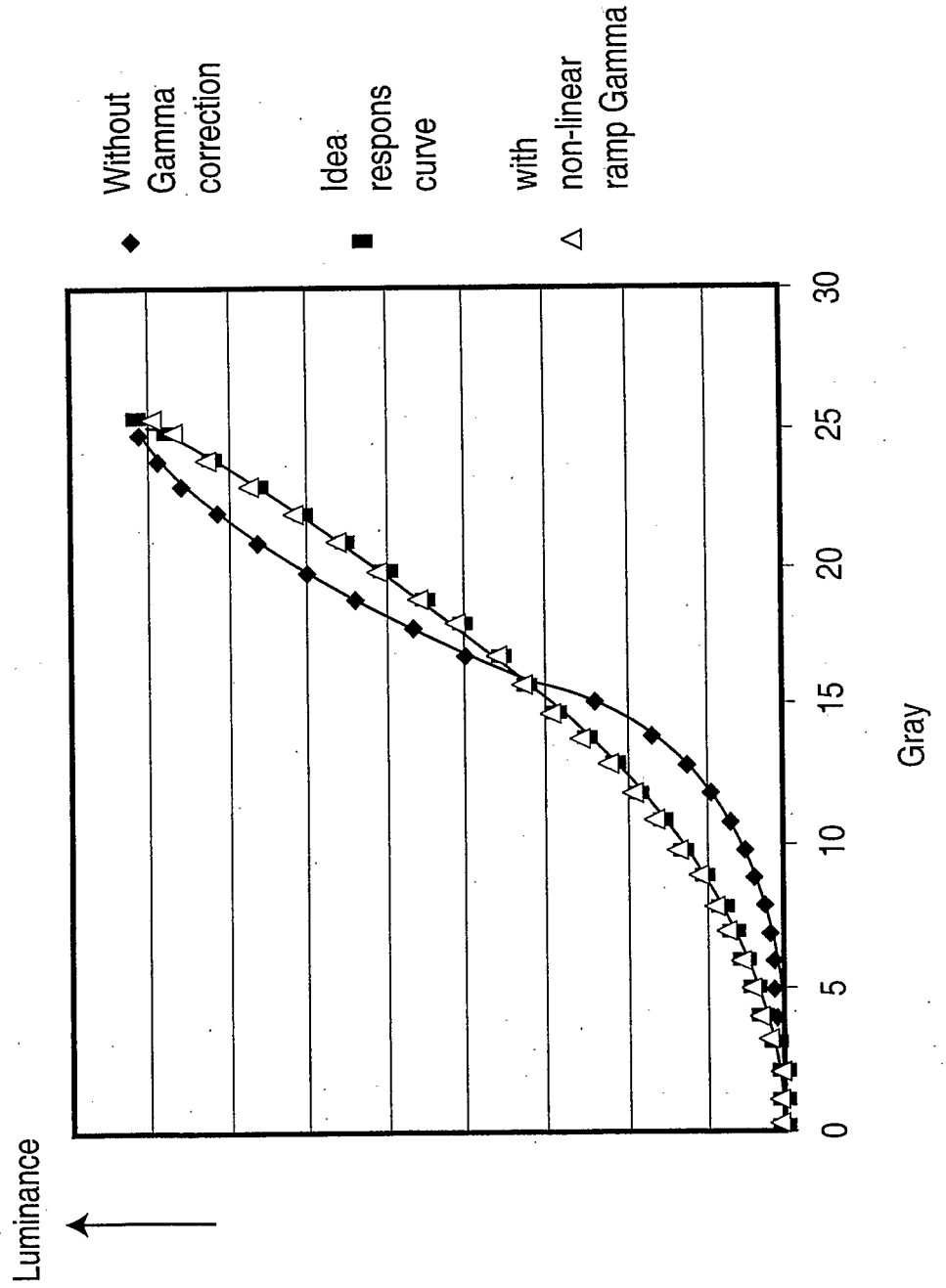


Figure 8

17" EL Display Luminance vs Gray



# INTERNATIONAL SEARCH REPORT

International Application No

PCT/CA 03/01693

**A. CLASSIFICATION OF SUBJECT MATTER**  
IPC 7 G09G3/30

According to International Patent Classification (IPC) or to both national classification and IPC

**B. FIELDS SEARCHED**

Minimum documentation searched (classification system followed by classification symbols)  
IPC 7 G09G

Documentation searched other than minimum documentation to the extent that such documents are included in the fields searched

Electronic data base consulted during the international search (name of data base and, where practical, search terms used)

EPO-Internal, WPI Data, INSPEC

**C. DOCUMENTS CONSIDERED TO BE RELEVANT**

Category °	Citation of document, with indication, where appropriate, of the relevant passages	Relevant to claim No.
Y	STEINER S A ET AL: "HIGH-PERFORMANCE COLUMN DRIVER FOR GRAY-SCALE TFEL DISPLAYS" INTERNATIONAL SYMPOSIUM OF THE SID. ANAHEIM, MAY 24 - 26, 1988, PLAYA DEL REY, SID, US, vol. SYMP. 29, 24 May 1988 (1988-05-24), pages 31-34, XP000041810 page 31, left-hand column, last paragraph -right-hand column, paragraph 1; figures 1,3 page 31, column 3, paragraph 3 ---	1-3
Y	US 6 137 462 A (KIM JUN-HEE) 24 October 2000 (2000-10-24) column 1, line 16 - line 34; figures 2,13 column 2, line 21 - line 34 -----	1-3

Further documents are listed in the continuation of box C.

Patent family members are listed in annex.

° Special categories of cited documents :

- "A" document defining the general state of the art which is not considered to be of particular relevance
- "E" earlier document but published on or after the international filing date
- "L" document which may throw doubts on priority claim(s) or which is cited to establish the publication date of another citation or other special reason (as specified)
- "O" document referring to an oral disclosure, use, exhibition or other means
- "P" document published prior to the international filing date but later than the priority date claimed

- "T" later document published after the international filing date or priority date and not in conflict with the application but cited to understand the principle or theory underlying the invention
- "X" document of particular relevance; the claimed invention cannot be considered novel or cannot be considered to involve an inventive step when the document is taken alone
- "Y" document of particular relevance; the claimed invention cannot be considered to involve an inventive step when the document is combined with one or more other such documents, such combination being obvious to a person skilled in the art.
- "&" document member of the same patent family

Date of the actual completion of the international search

17 March 2004

Date of mailing of the international search report

29/03/2004

Name and mailing address of the ISA

European Patent Office, P.B. 5818 Patentlaan 2  
 NL - 2280 HV Rijswijk  
 Tel. (+31-70) 340-2040, Tx. 31 651 epo nl,  
 Fax: (+31-70) 340-3016

Authorized officer

Gundlach, H

# INTERNATIONAL SEARCH REPORT

Information on patent family members

International Application No

PCT/CA 03/01693

Patent document cited in search report	Publication date	Patent family member(s)	Publication date
US 6137462	A	KR 209643 B1	15-07-1999

专利名称(译)	用于电致发光显示器的灰度伽马校正的方法和装置		
公开(公告)号	<a href="#">EP1559089A1</a>	公开(公告)日	2005-08-03
申请号	EP2003773373	申请日	2003-11-04
[标]申请(专利权)人(译)	伊菲雷技术公司		
申请(专利权)人(译)	IFIRE科技股份有限公司.		
当前申请(专利权)人(译)	IFIRE IP CORPORATION		
[标]发明人	CHENG CHUN FAI		
发明人	CHENG, CHUN-FAI		
IPC分类号	G09G3/30 G09G3/36		
CPC分类号	G09G3/32 G09G3/30 G09G3/3614 G09G2310/0259 G09G2310/027 G09G2320/0276		
优先权	60/423569 2002-11-04 US		
外部链接	<a href="#">Espacenet</a>		

#### 摘要(译)

一种驱动需要灰度控制的显示面板的电路和方法，其中施加到一行像素的电压等于分别施加到与该行相交的行电极和列电极的相对于地的相反符号的电压之和定义像素。通过调制施加到列电极的电压来实现灰度级。通常对于视频应用，需要256个单独的灰度级，对应于从零（无发光亮度）到全亮度的亮度级。每个灰度级所需的亮度不是灰度级数的线性函数，而是对应于该数的近似二次函数。本发明利用由具有256（8位）分辨率的数字时钟终止的非线性电压斜坡，有助于产生近似于该功能依赖性（即Gamma校正）的每个灰度级的亮度值。斜坡终端处的电压保持恒定值，并馈送到显示列的灰度驱动器的输出缓冲器。