

(12)

EUROPEAN PATENT APPLICATION

(43) Date of publication:
09.01.2002 Bulletin 2002/02

(51) Int Cl.⁷: **G09G 3/32, G11C 27/02**

(21) Application number: **01305898.7**

(22) Date of filing: **09.07.2001**

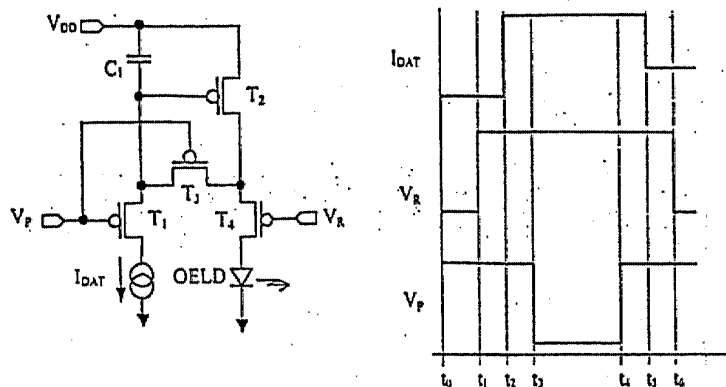
<div>(84) Designated Contracting States: AT BE CH CY DE DK ES FI FR GB GR IE IT LI LU MC NL PT SE TR Designated Extension States: AL LT LV MK RO SI</div> <div>(30) Priority: 07.07.2000 GB 0016816</div>	<div>(71) Applicant: SEIKO EPSON CORPORATION Shinjuku-ku Tokyo (JP)</div> <div>(72) Inventor: Tam, Simon Cambridge CB2 1SJ (GB)</div> <div>(74) Representative: Sturt, Clifford Mark et al Miller Sturt Kenyon 9 John Street London WC1N 2ES (GB)</div>
--	--

(54) **Current sampling circuit for organic electroluminescent display**

(57) A driver circuit operating in stages that comprise a programming stage and a reproduction stage, the circuit comprising: a plurality current paths each of which passes through the circuit, a current driven element, a transistor connected so as operatively to control the current supplied to the said element, a capacitor connected for storing an operating voltage of the transistor during the programming stage, and switching means which control the current paths, the arrangement

being such that one of the current paths does not include the said element. No current is applied to the current driven element by the current controlling transistor during the programming stage and thus the overall power consumption is reduced. Furthermore, the circuit can be operated from a normal supply voltage rather than requiring a high bias voltage. During the programming stage, the circuit uses a current sink rather than a current source. Preferably, the current driven element is an electroluminescent element.

Figure 3



Description

[0001] The present invention relates, inter alia, to a driver circuit. One particular application of such a driver circuit is for driving a pixel of an organic electroluminescent device.

[0002] An organic electro-luminescent (OEL) element comprises a light emitting material layer sandwiched between an anode layer and a cathode layer. Electrically, this element operates like a diode. Optically, it emits light when forward biased and the intensity of the emission increases with the forward bias current. It is possible to construct a display panel with a matrix of OEL elements fabricated on a transparent substrate and with at least one of the electrode layers being transparent. One can also integrate the driving circuit on the same panel by using low temperature polysilicon thin film transistor (TFT) technology.

[0003] In a basic analog driving scheme for an active matrix OEL display, a minimum of two transistors are required per pixel (Figure 1): T_1 is for addressing the pixel and T_2 is for converting the data voltage signal into current which drives the OEL element at a designated brightness; The data signal is stored by the storage capacitor C_{storage} when the pixel is not addressed. Although p-channel TFTs are shown in the figures, the same principle can also be applied for a circuit with n-channel TFTs.

[0004] There are problems associated with TFT analog circuits and OEL elements do not act like perfect diodes. The light emitting material does, however, have relatively uniform characteristics. Due to the nature of the TFT fabrication technique, spatial variation of the TFT characteristics exists over the entire panel. One of the most important considerations in a TFT analog circuit is the variation of threshold voltage, ΔV_T , from device to device. The effect of such variation in an OEL display, exacerbated by the non perfect diode behaviour, is the non-uniform pixel brightness over the display panel, which seriously affects the image quality. Therefore, a built-in circuit for compensating a dispersion of transistor characteristics is required.

[0005] A circuit shown in figure 2 is proposed as one of built-in for compensating a variation of transistor characteristics. In this circuit, T_1 is for addressing the pixel. T_2 operates as an analog current control to provide the driving current. T_3 connects between the drain and gate of T_2 and toggles T_2 to be either a diode or in saturation. T_4 acts as a switch. Either T_1 or T_4 can be ON at any one time. Initially, T_1 and T_3 are OFF, and T_4 is ON. When T_4 is OFF, T_1 and T_3 are ON, and a current of known value is allowed to flow into the OEL element, through T_2 . This is the programming stage because the threshold voltage of T_2 is measured with T_2 operating as a diode (with T_3 turned ON) while the programming current is allowed to flow through T_1 , through T_2 and into the OEL element. T_3 shorts the drain and gate of T_2 and turns T_2 in to a diode. The detected threshold voltage of

T_2 is stored by the capacitor C_1 connected between the gate and source terminals of T_2 when T_3 and T_1 are switched OFF. Then T_4 is turned ON, the current is now provided by V_{DD} . If the slope of the output characteristics were flat, the reproduced current would be the same as the programmed current for any threshold voltage of T_2 detected. By turning ON T_4 , the drain-source voltage of T_2 is pulled up, so a flat output characteristic will keep the reproduced current the same as the programmed current. Note that ΔV_{T_2} shown in figure 2 is imaginary, not real.

[0006] A constant current is provided, in theory, during the active programming stage, which is t_2 to t_5 in the timing diagram shown in figure 2. The reproduction stage starts at t_6 .

[0007] The circuit of figure 2 is advantageous but there is an on-going desire to reduce power consumption. In particular, implementation of the current-source in the circuit of figure 2 requires a bias voltage (V_{BIAS}) in addition to the supply voltage (V_{DD}). Although the supply voltage (V_{DD}) could be increased to cover the required bias voltage (V_{BIAS}) - which would have the advantage of reducing the component count, there is still an overall increase in system power consumption to program with any value of data current (I_{DAT}).

[0008] Attention is, by the present invention, drawn to the fact that all currents passing through the circuit of figure 2 pass through the OEL element. The significance of this to the present invention will be apparent from the description given hereinafter.

[0009] According to a first aspect of the present invention there is provided a driver circuit operating in stages that comprise a programming stage and a reproduction stage, the circuit comprising: a plurality of current paths each of which passes through the circuit, a current driven element, a transistor connected so as operatively to control the current supplied to the said element, a capacitor connected for storing an operating voltage of the transistor during the programming stage, and switching means which control the current paths, the arrangement being such that one of the current paths does not include the said element.

[0010] According to a second aspect of the present invention there is provided a driver circuit for driving a pixel of an electroluminescent device, the pixel including an electroluminescent element and the circuit comprising: a transistor connected so as operatively to control the current supplied to the electroluminescent element, a capacitor connected for storing an operating voltage of the transistor during a programming stage, a first switching means connected so as to establish when operative a current path through the transistor during the programming stage, and a second switching means connected so as to establish when operative a current path through the transistor and the electroluminescent element during a reproduction stage, wherein the first switching means is connected such that the current path during the programming stage does not pass through

the electroluminescent element.

[0011] According to a third aspect of the present invention there is provided a driver circuit for driving a pixel of an electroluminescent device, the pixel including an electroluminescent element and the circuit comprising; a transistor connected so as operatively to control the current supplied to the electroluminescent element, a capacitor connected for storing an operating voltage of the transistor during a programming stage, a first switching means connected so as to establish when operative a current path through the transistor during the programming stage, a second switching means connected so as to establish when operative a current path through the transistor and the electroluminescent element during a reproduction stage, and a current sink, the first switching means being connected such that the current path during the programming stage is through the transistor to the current sink.

[0012] According to a fourth aspect of the present invention there is provided a method of controlling the current supply to an electroluminescent element comprising the steps of providing a current path during a programming stage which path does not pass through the electroluminescent element and of providing a current path during a reproduction stage which path does pass through the electroluminescent element.

[0013] According to a fifth aspect of the present invention there is provided a method of controlling the current supply to an electroluminescent element comprising the steps of providing a current path during a programming stage which path connects to a current sink and of providing a current path during a reproduction stage which path passes through the electroluminescent element.

[0014] According to a sixth aspect of the present invention there is provided an electroluminescent display device comprising one or more driver circuits according to any of the first to third aspects of the present invention.

[0015] According to a seventh aspect of the present invention there is provided an electronic apparatus incorporating an electroluminescent display device according to the sixth aspect of the present invention.

[0016] According to an eighth aspect of the present invention there is provided a circuit comprising a current driven element, the circuit providing a first current path including the current driven element and a second current path not including the current driven element.

[0017] According to a ninth aspect of the present invention there is provided a circuit comprising a current driven element, the circuit providing a first current path flowing a current through the current driven element, and a second current path not flowing current through the current driven element.

[0018] According to a tenth aspect of the present invention there is provided a method for driving a circuit comprising a current driven element and a transistor that controls a current supplied to the current driven element, comprising a step of determining a gate voltage of the

transistor based on a predetermined current.

[0019] It will be noted that according to the present invention no current is applied to the current driven element by the current controlling transistor during the programming stage. In accordance with the invention in an electroluminescent device a pixel driver circuit can be implemented without degrading the perceived image presented by the electroluminescent device. It has the benefit of reducing the overall power consumption compared with the prior art in which the same current is supplied to the OEL element during both the programming and the reproduction stage. Furthermore, the circuit can be operated from a normal supply voltage rather than requiring a high bias voltage as in the prior art. In effect, the present invention provides for separation of the programming and the reproduction current paths. This enables a number of advantages to be achieved. For example, if there is no current flow through the OEL element during the programming stage then the programming stage operates more quickly - since the arrangement avoids the slow down caused by the parasitic capacitance of the OEL element.

[0020] Embodiments of the present invention will now be described by way of further example only and with reference to the accompanying drawings, in which:-

Figure 1 shows a conventional OEL element pixel driver circuit using two transistors,

Figure 2 shows a known current programmed OEL element driver with threshold voltage compensation,

Figure 3 shows a pixel driver circuit according to a first embodiment of the present invention,

Figure 4 shows a pixel driver circuit according to a second embodiment of the present invention,

Figure 5 shows several pixels in a matrix display wherein each pixel uses the circuit of figure 4,

Figure 6 is a schematic sectional view of a physical implementation of an OEL element and pixel driver according to an embodiment of the present invention,

Figure 7 is a simplified plan view of an OEL display panel incorporating the present invention,

Figure 8 shows another embodiment of a pixel driver circuit according to the present invention,

Figure 9 shows another embodiment of a pixel driver circuit according to the present invention,

Figure 10 is a schematic view of a mobile personal computer incorporating a display device having a pixel driver according to the present invention,

Figure 11 is a schematic view of a mobile telephone incorporating a display device having a pixel driver according to the present invention,

Figure 12 is a schematic view of a digital camera incorporating a display device having a pixel driver according to the present invention,

Figure 13 illustrates the application of the driver circuit of the present invention to a magnetic RAM,

Figure 14 illustrates the application of the driver circuit of the present invention to a magnetoresistive element,

Figure 15 illustrates the application of the driver circuit of the present invention to a capacitance sensor or a charge sensor,

Figure 16 illustrates the application of the driver circuit of the present invention to a night vision camera, and

Figure 17 is a brief outline of an alternative implementation of the circuit of figure 4.

[0021] A pixel driver circuit according to a first embodiment of the present invention is shown in figure 3. Transistor T_2 operates as an analog current control to provide the driving current to the OEL element. Also, the storage capacitor C_1 is connected between the gate and the source of transistor T_2 . In the circuit of figure 2, a current source is operatively connected to the source of transistor T_2 by transistor T_1 , during the programming stage, and current is thus applied to the OEL element. In the embodiment of the present invention, transistor T_1 operatively connects transistor T_2 to a current sink during the programming stage. That is, according to the present invention, during the programming stage no current is supplied through transistor T_2 to the OEL element. In the circuit of figure 3, the drain of transistor T_2 is connected to the source of transistor T_1 via the source/drain path of transistor T_3 . The source of transistor T_1 is connected to the gate of transistor T_2 and the gates of transistors T_1 and T_3 are connected together. The programming voltage V_P is applied to the gates of T_1 and T_3 . Transistor T_4 , which is switched off during the programming stage, connects the drain of T_2 and the source of T_3 to the OEL element. During the programming stage, transistor T_1 operatively connects transistor T_2 to a current sink which is tied to ground or a reference voltage.

[0022] The circuit of figure 3 operates in the programming stage with T_4 switched off and T_1 and T_3 switched on. T_3 being switched on has the effect of making T_2 act as a diode and T_1 connects this diode to the data current sink. As a result, capacitor C_1 charges (or discharges, depending on the voltage stored during the previous frame). Capacitor C_1 charges to the gate/source voltage of transistor T_2 and thus stores the voltage (V_{GS2} , corresponding to the data current I_{DAT}) which will control the current supply to the OEL element during the reproduction stage. At the end of the programming stage, T_1 and T_3 are switched off. The voltage V_{GS2} is stored on C_1 for the remainder of the frame period. As will be readily apparent from the circuit diagram and this description, in accordance with the present invention there is no requirement for a bias voltage to provide a current source. That is, the supply voltage (V_{DD}) in figure 3 is determined by T_2 and by the OEL element and there is no requirement for a high voltage to power a current source. The maximum voltage required by the circuit is

thus significantly less than that required by the circuit of figure 2.

[0023] At the start of the programming stage, with T_4 switched off, it is found that the OEL element exhibits a parasitic capacitance which discharges through the device. The rate of charging of C_1 determines the time taken for the programming stage. In accordance with circuits embodying the present invention, the capacitance of C_1 can be relatively small and thus the charging can be very rapid. As a consequence, the period for which no current is applied to the OEL element by T_2 is very short compared with the whole frame. These factors, together with the persistence of vision of the human eye means that there is no perceptible degradation of a displayed image.

[0024] The off resistance of T_3 can be important, because after C_1 has been charged and T_3 is switched off, the off resistance of T_3 can affect the voltage across C_1 for the rest of the frame period. Thus, the gate/source capacitance of T_3 should preferably be small compared with C_1 .

[0025] The reproduction voltage V_R is applied to the gate of transistor T_4 . At the beginning of the reproduction stage, in the circuit of figure 3, T_4 is switched on and T_1 and T_3 remain switched off. As a result, T_2 acts as a current source with V_{GS2} biased by C_1 , thus supplying current to the OEL element. At the end of the reproduction stage T_4 is switched off, T_1 and T_3 remain switched off. This completes one cycle. The driving waveform is indicated in figure 3.

[0026] Figure 4 illustrates a second embodiment according to the present invention. The circuit of figure 4 differs from that of figure 3 in the connection of transistor T_3 . In the circuit of figure 4, T_1 is connected to C_1 through the drain/source path of T_3 . The circuit of figure 4 is preferred to that of figure 3 because T_3 is not in the current path during the programming stage. Otherwise the operation and effects of the second embodiment are similar to those of the first embodiment.

[0027] Figure 5 is a circuit diagram showing a number of pixels in an active matrix display, with each pixel implemented in accordance with the circuit of figure 4. To simplify the illustration, a monochrome display device is shown. Since the circuit is of an active matrix, pixels on the same row are addressed at the same time. Transistor T_3 is responsible for pixel addressing, so its source terminal is connected to the current data line shared by a column of pixels. Because of this the leakage current of T_3 should be kept to a minimum. This can be ensured by using a multi-gate structure for T_1 . In addition to a multi-gate structure, a lightly doped drain (LDD) structure can also reduce the leakage current.

[0028] Figure 6 is a schematic cross-sectional view of the physical implementation of the pixel driver circuit in an OEL element structure. In figure 6, numeral 132 indicates a hole injection layer, numeral 133 indicates an organic EL layer, and numeral 151 indicates a resist or separating structure. The switching thin-film transistor

121 and the n-channel type current-thin-film transistor 122 adopt the structure and the process ordinarily used for a low-temperature polysilicon thin-film transistor, such as are used for example in known thin-film transistor liquid crystal display devices such as a top-gate structure and a fabrication process wherein the maximum temperature is 600°C or less. However, other structures and processes are applicable.

[0029] The forward oriented organic EL display element 131 is formed by: the pixel electrode 115 formed of Al, the opposite electrode 116 formed of ITO, the hole injection layer 132, and the organic EL layer 133. In the forward oriented organic EL display element 131, the direction of current of the organic EL display device can be set from the opposite electrode 116 formed of ITO to the pixel electrode 115 formed of Al.

[0030] The hole injection layer 132 and the organic EL layer 133 may be formed using an ink-jet printing method, employing the resist 151 as a separating structure between the pixels. The opposite electrode 116 formed of ITO may be formed using a sputtering method. However, other methods may also be used for forming all of these components.

[0031] The typical layout of a full display panel employing the present invention is shown schematically in figure 7. The panel comprises an active matrix OEL element 200 with analogue current program pixels, an integrated TFT scanning driver 210 with level shifter, a flexible TAB tape 220, and an external analogue driver LSI 230 with an integrated RAM/controller. Of course, this is only one example of the possible panel arrangements in which the present invention can be used.

[0032] The structure of the organic EL display device is not limited to the one described here. Other structures are also applicable.

[0033] With reference for example to the circuit of figure 3, it will be appreciated that the invention provides a data current source - in this case for the OEL element. The circuit is readily extended so as to provide an amplified and/or multiple level (current) output. The principle of such a circuit can be understood with reference to figure 8. the circuit of figure 8 comprises the circuit of figure 3 with an additional drive transistor T_5 and an additional switching transistor T_6 added. The source of T_5 is connected to V_{DD} and its gate receives the same drive voltage signal as is applied to the gate of transistor T_2 . The drain of transistor T_5 is series connected to the drain of transistor T_6 and the source of T_6 is connected to the common point of connection of transistors T_2 , T_3 and T_4 . The gate of transistor T_6 is connected to the gate of transistor T_4 . If it is assumed that the characteristic of transistor T_2 is W/L and that the characteristic of transistor T_5 is selected to be $(N-1)W/L$ then a current amplification of:-

$$I_{out} = I_{in} \times N$$

is achieved. I_{in} is the current which flows through the current sink, i.e. I_{DAT} in figures 3 and 4. I_{out} is the current which flows through the OEL element. Thus the circuit of figure 8 can be used to reduce the value of I_{DAT} compared with the circuit of figures 3 and 4, while maintaining the same current through the OEL element. Lowering the value of I_{DAT} has the advantage of enabling the operating speed of the circuit to be increased. Lowering the value of I_{DAT} also has the advantage of lowering the transmission loss experienced across a matrix of pixels, which is particularly important with respect to large scale display panels.

[0034] Of course, additional stages - each adding their own circuit of additional transistors T_5 and T_6 - can be added. With the switching transistors T_6 series connected and each receiving its own gate drive signal - as shown in figure 9 (A,B etc) - different current values can be selected to pass through the OEL element, resulting in different intensities of light output.

[0035] Preferably the circuits shown in figures 3 to 9 are implemented using thin film transistor (TFT) technology, most preferably in polysilicon.

[0036] The present invention is particularly advantageous for use in small, mobile electronic products such as mobile phones, computers, CD players, DVD players and the like - although it is not limited thereto.

[0037] Several electronic apparatuses using the above organic electroluminescent display device will now be described.

<1: Mobile Computer>

[0038] An example in which the display device according to one of the above embodiments is applied to a mobile personal computer will now be described.

[0039] Figure 10 is an isometric view illustrating the configuration of this personal computer. In the drawing, the personal computer 1100 is provided with a body 1104 including a keyboard 1102 and a display unit 1106. The display unit 1106 is implemented using a display panel fabricated according to the present invention, as described above.

<2: Portable Phone>

[0040] Next, an example in which the display device is applied to a display section of a portable phone will be described. Fig. 11 is an isometric view illustrating the configuration of the portable phone. In the drawing, the portable phone 1200 is provided with a plurality of operation keys 1202, an earpiece 1204, a mouthpiece 1206, and a display panel 100. This display panel 100 is implemented using a display panel fabricated according to the present invention, as described above.

<3: Digital Still Camera>

[0041] Next, a digital still camera using an OEL dis-

play device as a finder will be described. Fig. 12 is an isometric view illustrating the configuration of the digital still camera and the connection to external devices in brief.

[0042] Typical cameras sensitize films based on optical images from objects, whereas the digital still camera 1300 generates imaging signals from the optical image of an object by photoelectric conversion using, for example, a charge coupled device (CCD). The digital still camera 1300 is provided with an OEL element 100 at the back face of a case 1302 to perform display based on the imaging signals from the CCD. Thus, the display panel 100 functions as a finder for displaying the object. A photo acceptance unit 1304 including optical lenses and the CCD is provided at the front side (behind in the drawing) of the case 1302.

[0043] When a cameraman determines the object image displayed in the OEL element panel 100 and releases the shutter, the image signals from the CCD are transmitted and stored to memories in a circuit board 1308. In the digital still camera 1300, video signal output terminals 1312 and input/output terminals 1314 for data communication are provided on a side of the case 1302. As shown in the drawing, a television monitor 1430 and a personal computer 1440 are connected to the video signal terminals 1312 and the input/output terminals 1314, respectively, if necessary. The imaging signals stored in the memories of the circuit board 1308 are output to the television monitor 1430 and the personal computer 1440, by a given operation.

[0044] Examples of electronic apparatuses, other than the personal computer shown in Fig. 10, the portable phone shown in Fig. 11, and the digital still camera shown in Fig. 12, include OEL element television sets, view-finder-type and monitoring-type video tape recorders, car navigation systems, pagers, electronic notebooks, portable calculators, word processors, workstations, TV telephones, point-of-sales system (POS) terminals, and devices provided with touch panels. Of course, the above OEL device can be applied to display sections of these electronic apparatuses.

[0045] The driver circuit of the present invention can be disposed not only in a pixel of a display unit but also in a driver disposed outside a display unit.

[0046] In the above, the driver circuit of the present invention has been described with reference to various display devices. The applications of the driver circuit of the present invention are much broader than just display devices and include, for example, its use with a magnetoresistive RAM, a capacitance sensor, a charge sensor, a DNA sensor, a night vision camera and many other devices.

[0047] Figure 13 illustrates the application of the driver circuit of the present invention to a magnetic RAM. In figure 13 a magnetic head is indicated by the reference MH.

[0048] Figure 14 illustrates the application of the driver circuit of the present invention to a magnetoresistive

element. In figure 14 a magnetic head is indicated by the reference MH. and a magnetic resistor is indicated by the reference MR.

[0049] Figure 15 illustrates the application of the driver circuit of the present invention to a capacitance sensor or a charge sensor. In figure 15 a sense capacitor is indicated by the reference C_{sense} . The circuit of figure 15 is also applicable to other applications, such as a fingerprint sensor and a DNA sensor.

[0050] Figure 16 illustrates the application of the driver circuit of the present invention to a night vision camera. In figure 16 a photoconductor is indicated by reference R.

[0051] In the embodiments illustrated with reference to the above specific description the transistors have been shown as p-channel type transistors. This is not limiting of the invention. For example, figure 17 is a brief outline of an alternative implementation of the circuit of figure 4. In figure 17 n-channel transistors are used throughout the circuit, except for the drive transistor which is retained as a p-channel transistor.

[0052] It will be apparent to persons skilled in the art that other variations and modifications can be made to the arrangements described with respect to figures 3 to 16 without departing from the scope of the invention.

Claims

1. A driver circuit operating in stages that comprise a programming stage and a reproduction stage, the circuit comprising: a plurality of current paths each of which passes through the circuit, a current driven element, a transistor connected so as operatively to control the current supplied to the said element, a capacitor connected for storing an operating voltage of the transistor during the programming stage, and switching means which control the current paths, the arrangement being such that one of the current paths does not include the said element.
2. A driver circuit for driving a pixel of an electroluminescent device, the pixel including an electroluminescent element and the circuit comprising; a transistor connected so as operatively to control the current supplied to the electroluminescent element, a capacitor connected for storing an operating voltage of the transistor during a programming stage, a first switching means connected so as to establish when operative a current path through the transistor during the programming stage, and a second switching means connected so as to establish when operative a current path through the transistor and the electroluminescent element during a reproduction stage, wherein the first switching means is connected such that the current path during the programming stage does not pass through the electroluminescent element.

3. A driver circuit for driving a pixel of an electroluminescent device, the pixel including an electroluminescent element and the circuit comprising; a transistor connected so as operatively to control the current supplied to the electroluminescent element, a capacitor connected for storing an operating voltage of the transistor during a programming stage, a first switching means connected so as to establish when operative a current path through the transistor during the programming stage, a second switching means connected so as to establish when operative a current path through the transistor and the electroluminescent element during a reproduction stage, and a current sink, the first switching means being connected such that the current path during the programming stage is through the transistor to the current sink. 5
4. A driver circuit as claimed in claim 2 or 3, wherein the first and second switching means are controlled by respective control signals separate from each other. 10
5. A driver circuit as claimed in any of claims 1 to 4, further comprising a third switching means, the third switching means being connected to bias the transistor to act as a diode during the programming stage. 15
6. A driver circuit as claimed in claim 5, wherein the third switching means connects the first switching means to the source/drain current path of the transistor. 20
7. A driver circuit as claimed in claim 5, wherein the third switching means connects the first switching means to the gate of the transistor. 25
8. A driver circuit as claimed in any of claims 2 to 7, wherein an additional transistor is connected in parallel with the said transistor, an additional switching means interconnects the drains of the transistors, and the gate of the additional transistor is connected to the gate of the said transistor. 30
9. A driver circuit as claimed in claim 8, comprising a plurality of additional transistors each with a respective additional switching means, each additional transistor and additional switching means being connected as aforesaid with the additional switching means being connected in series with each other. 35
10. A driver circuit as claimed in any preceding claim, wherein the circuit is implemented with polysilicon thin film transistors. 40
11. A method of controlling the current supply to an electroluminescent element comprising the steps of providing a current path during a programming stage which path does not pass through the electroluminescent element and of providing a current path during a reproduction stage which path does pass through the electroluminescent element. 45
12. A method of controlling the current supply to an electroluminescent element comprising the steps of providing a current path during a programming stage which path connects to a current sink and of providing a current path during a reproduction stage which path passes through the electroluminescent element. 50
13. An electroluminescent display device comprising one or more driver circuits as claimed in any of claims 1 to 10.
14. An electronic apparatus incorporating an electroluminescent display device as claimed in claim 13.
15. A driver circuit as claimed in claim 5, wherein the third switching means is disposed between the capacitor and the first switching means.
16. A driver circuit as claimed in any of claims 1 to 10, wherein the said transistor is a p-channel thin film transistor
17. A driver circuit as claimed in claim 5, wherein the first, the second, and the third switching means are formed of respective n-channel thin film transistors.
18. A circuit comprising a current driven element, the circuit providing a first current path including the current driven element and a second current path not including the current driven element.
19. A circuit comprising a current driven element, the circuit providing a first current path flowing a current through the current driven element, and a second current path not flowing current through the current driven element.
20. The circuit according to claim 18 or claim 19, further comprising a transistor for controlling a current supplied to the current driven element.
21. The circuit according to claim 20, wherein the second current path is disposed so that the second current path is enabled to be connected to a power source.
22. The circuit according to claim 20, wherein the second current path further includes a first switching means. 55

23. The circuit according to claim 20, wherein the second current path includes at least one of the transistor and another transistor that determines a current flowing through the transistor. 5
24. The circuit according to claim 20, further comprising a capacitor connected to a gate of the transistor. 10
25. The circuit according to claim 24, further comprising a second switching means disposed between the current driven element and the transistor. 15
26. The circuit according to claim 25, further comprising a third switching means disposed between the first switching means and the capacitor. 20
27. The circuit according to claim 25, wherein the first switching means and the second switching means are controlled by respective control signals separated from each other. 25
28. The circuit according to claim 18 or claim 19, wherein the current driven element is an organic electroluminescent element. 30
29. The circuit according to claim 20, wherein the transistor is a p-channel thin film transistor. 35
30. The circuit according to claim 26, wherein the first, the second, and the third switching means are n-channel thin film transistors. 40
31. The circuit according to claim 20, wherein the first current path and the second current path including the transistor 45
32. An electro-optical device having a plurality of pixels and at least one pixel comprising a circuit with a current driven element and a current determining means for determining a current according to a data signal, the circuit providing a first current path including the current driven element and a second current path not including the current driven element. 50
33. An electronic apparatus including the electro-optical device according to claim 32. 55
34. The circuit according to claim 18 or claim 19, wherein the second current path is connected to a current sink.
35. The circuit according to claim 21, wherein the second current path is connected to a current sink.
36. A method for driving a circuit comprising a current driven element and a transistor that controls a current supplied to the current driven element, comprising a step of determining a gate voltage of the transistor based on a predetermined current.
37. The method according to claim 36, further comprising a step of supplying a current to the current driven element.
38. The method according to claim 36, wherein no current is supplied to the current driven element during the step of determining a gate voltage of the transistor based on a predetermined current.

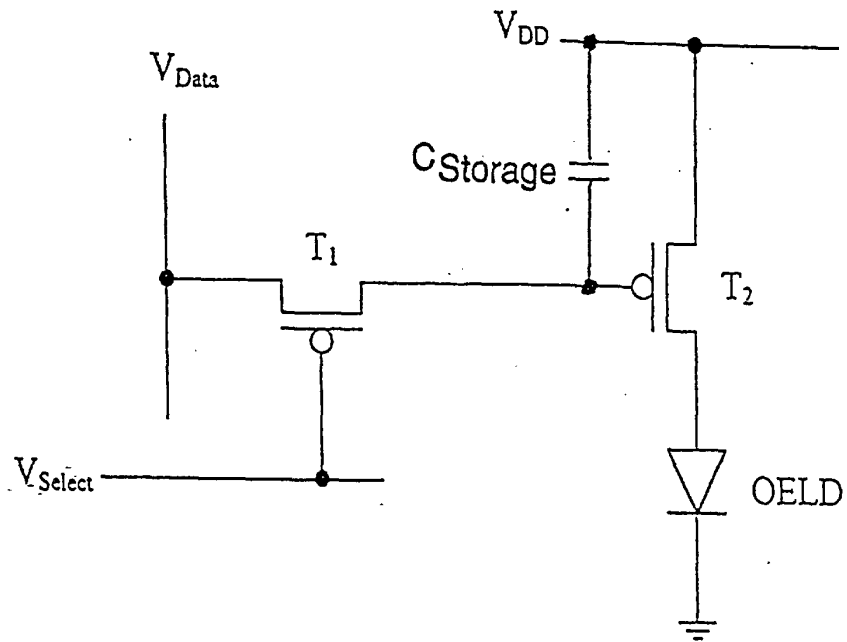


Figure 1

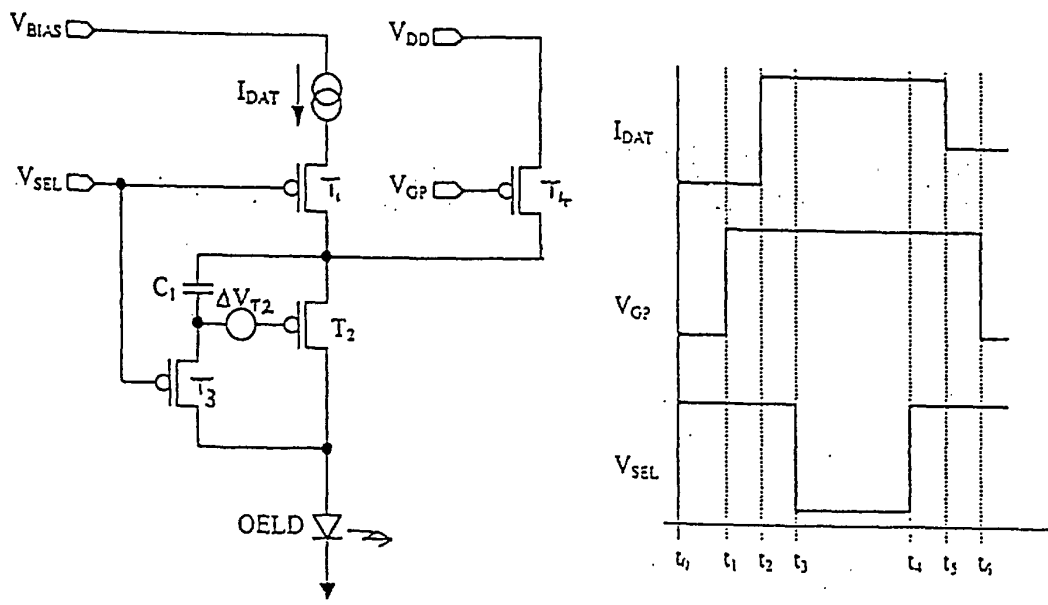


Figure 2

Figure 3

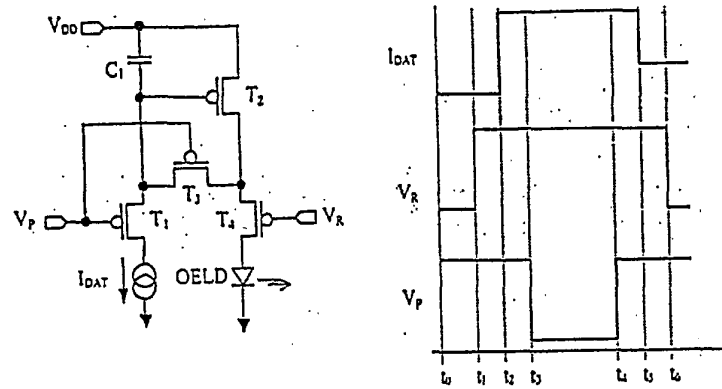


Figure 4

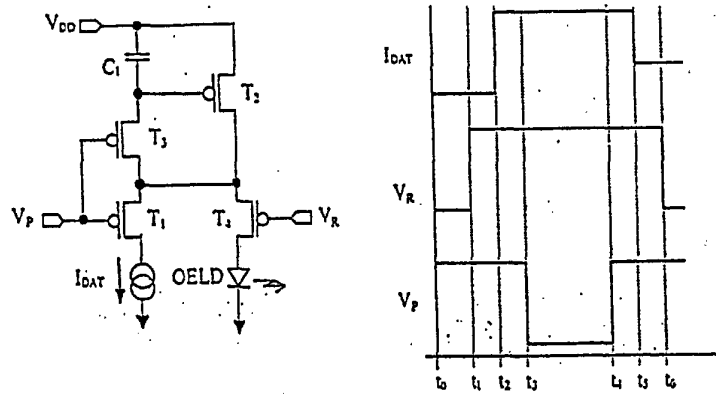


Figure 5

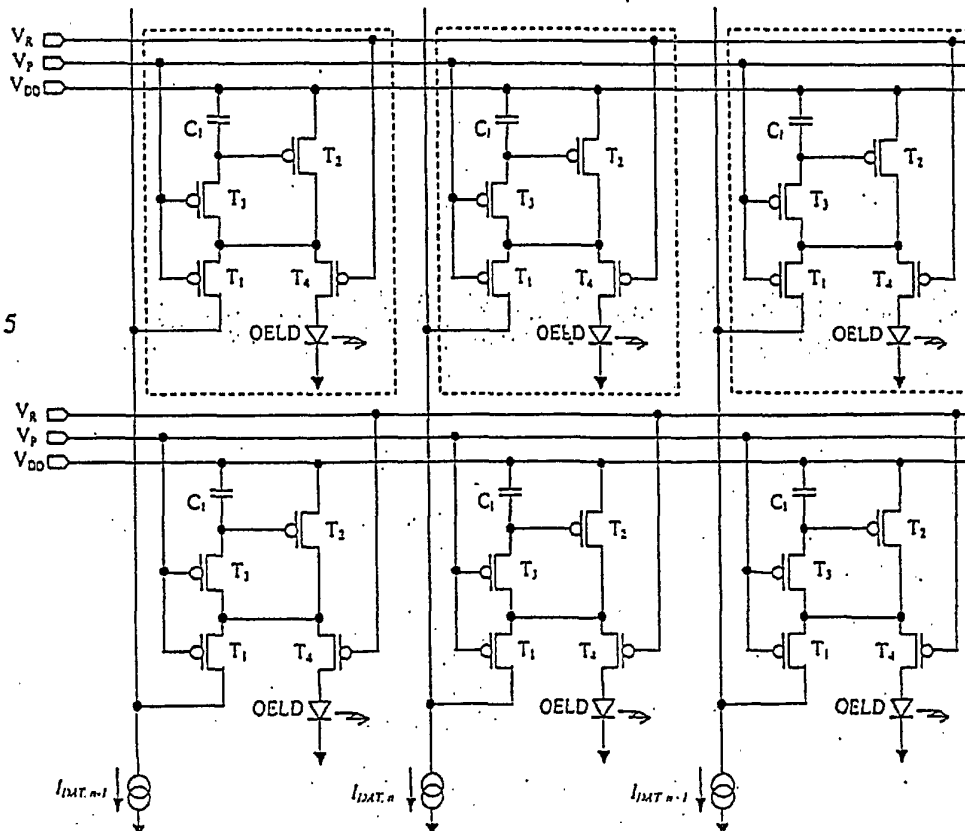


Figure 6

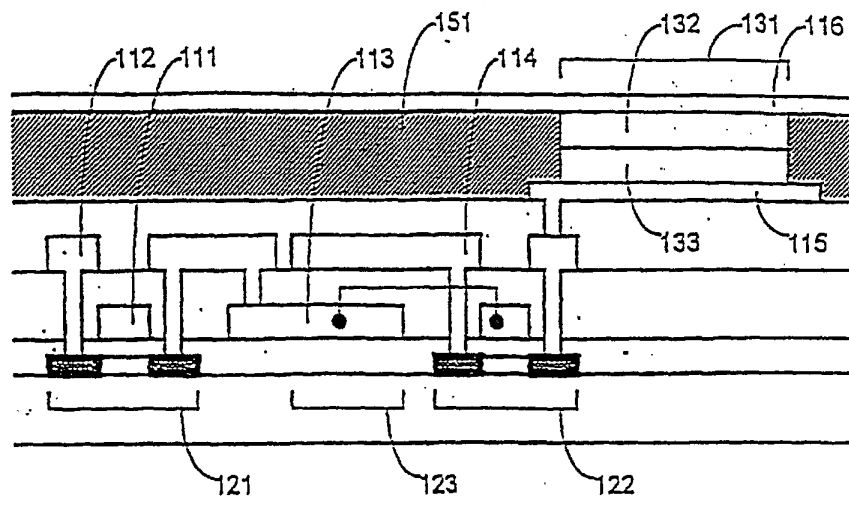


Figure 7

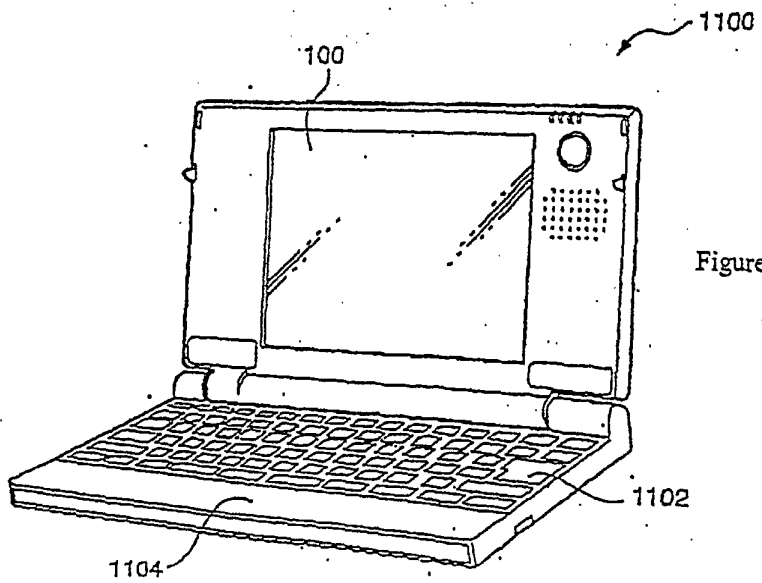
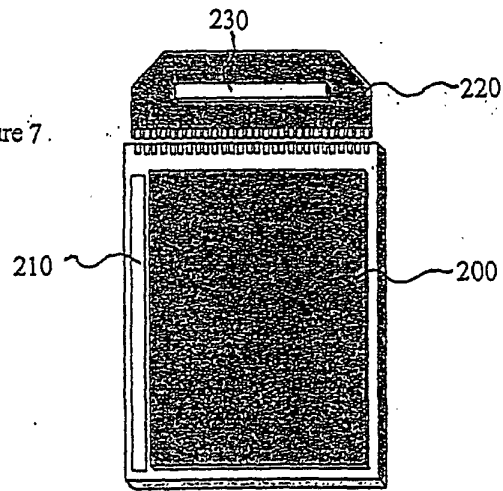


Figure 10

Figure 8

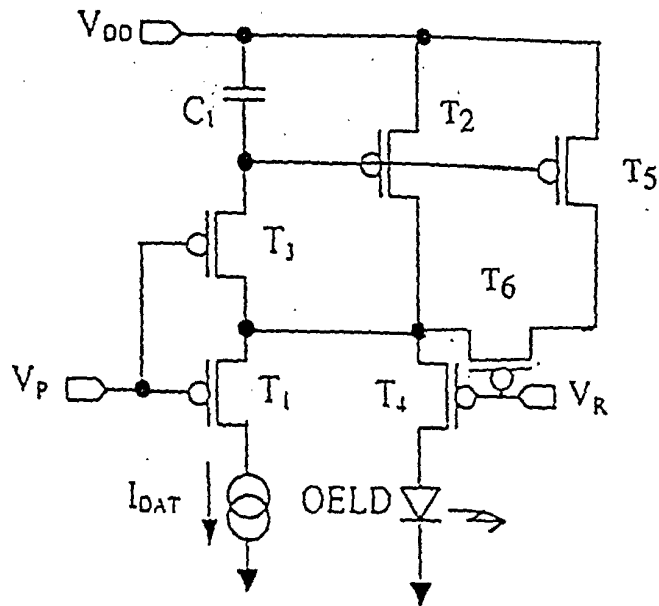


Figure 9

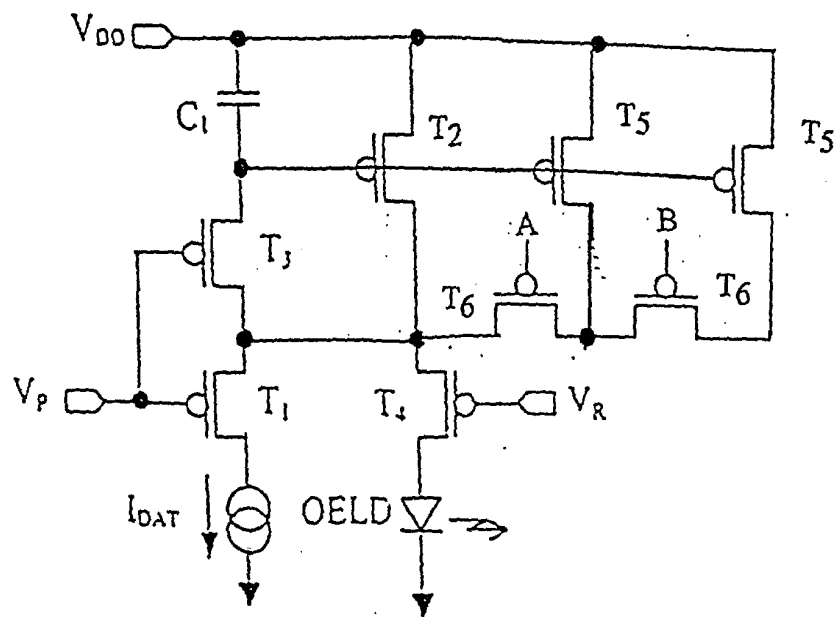


Figure 11

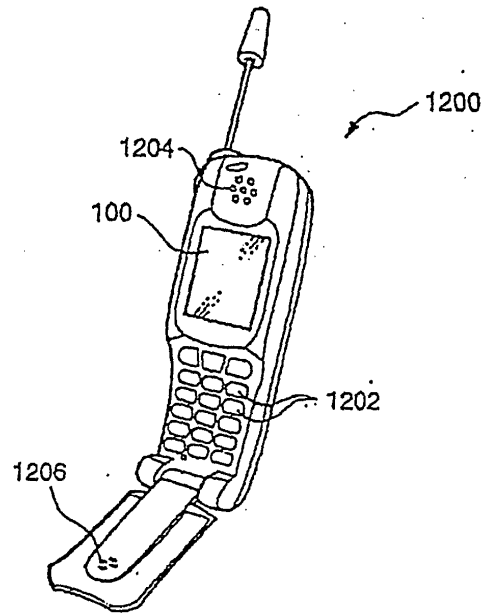


Figure 12

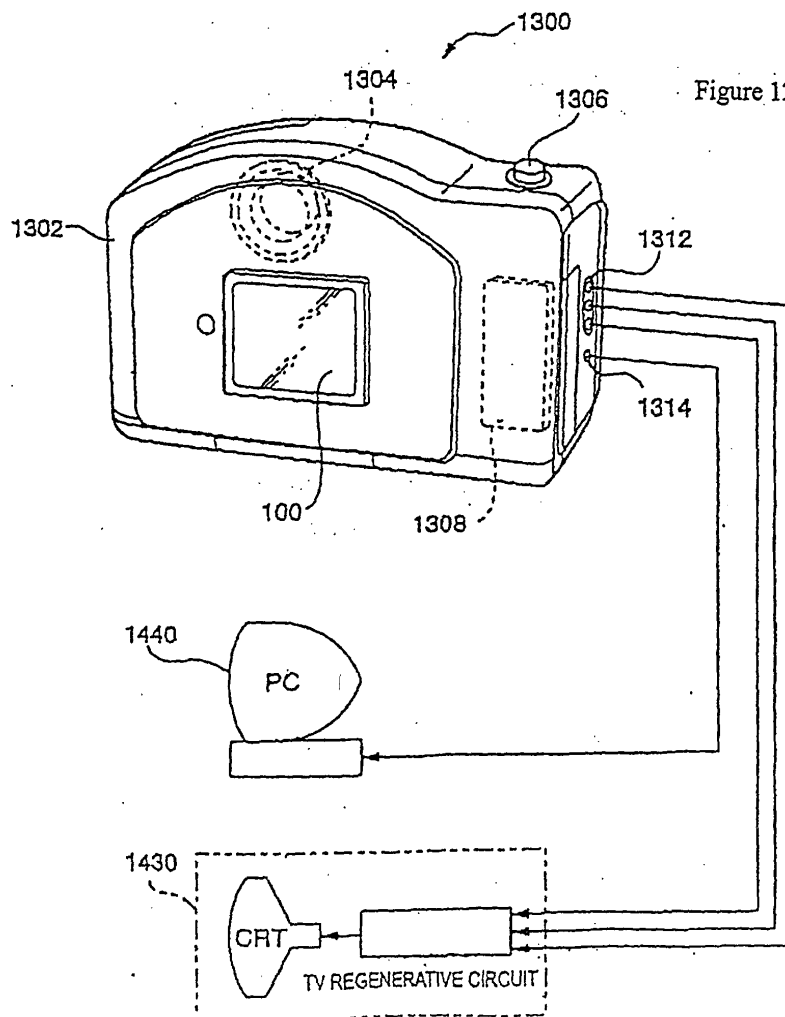


Figure 13

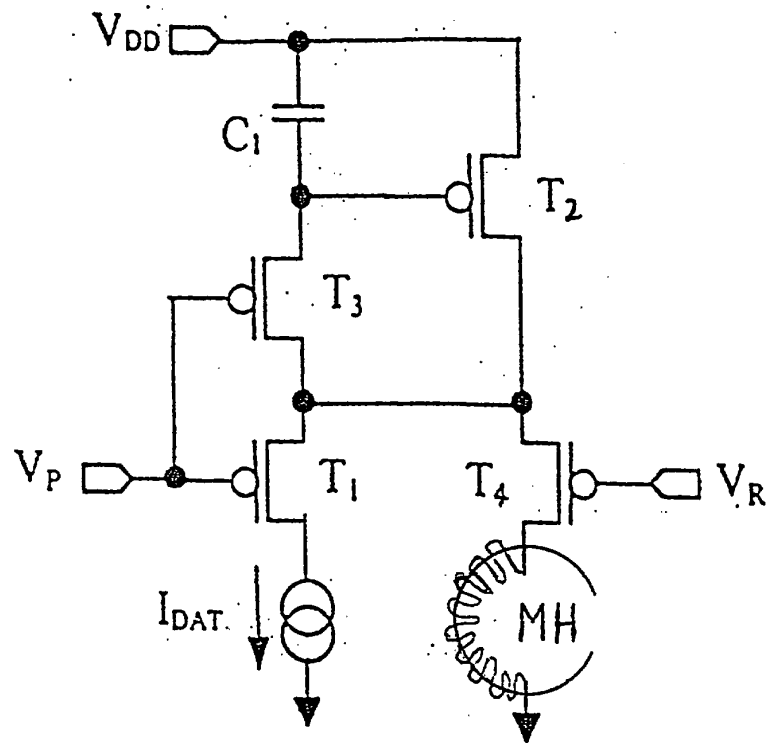
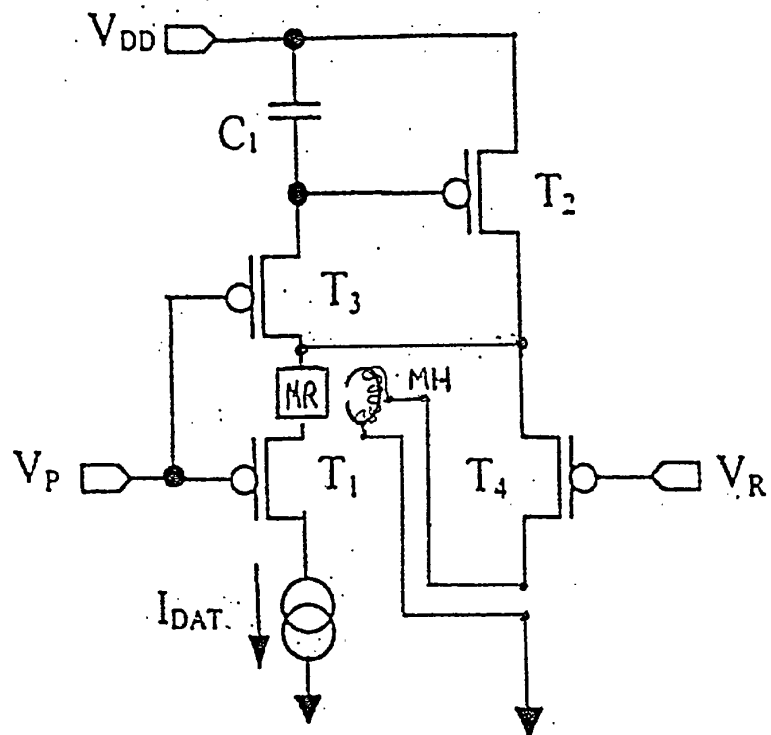


Figure 14



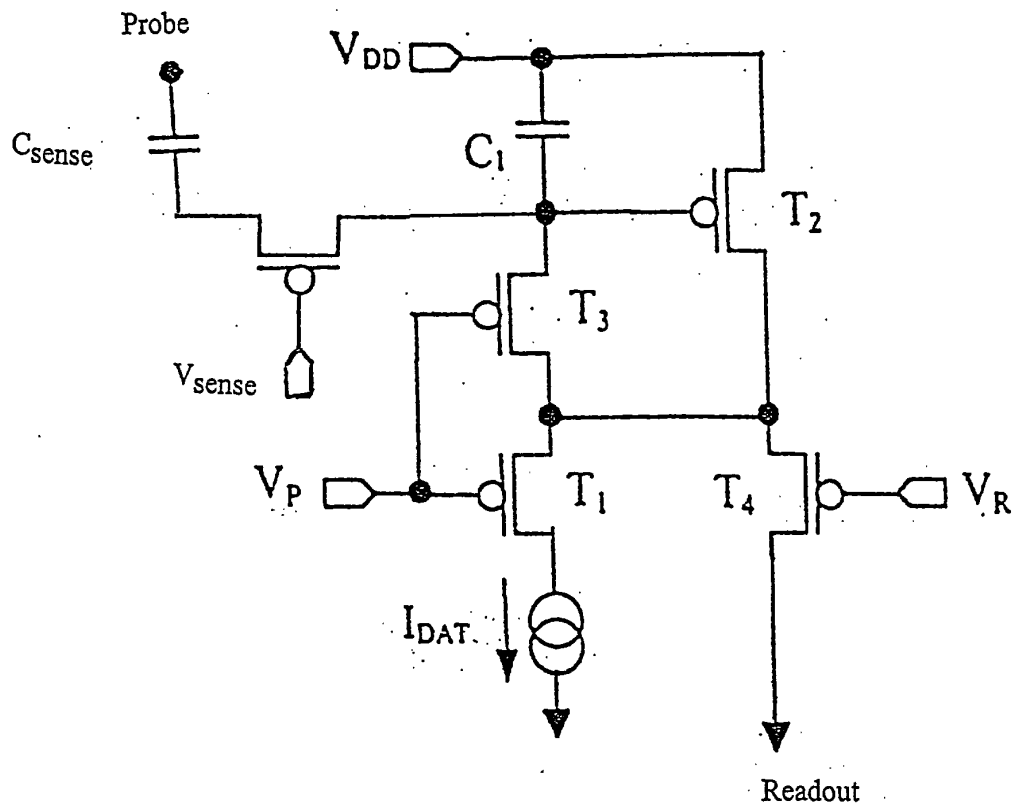


Figure 15

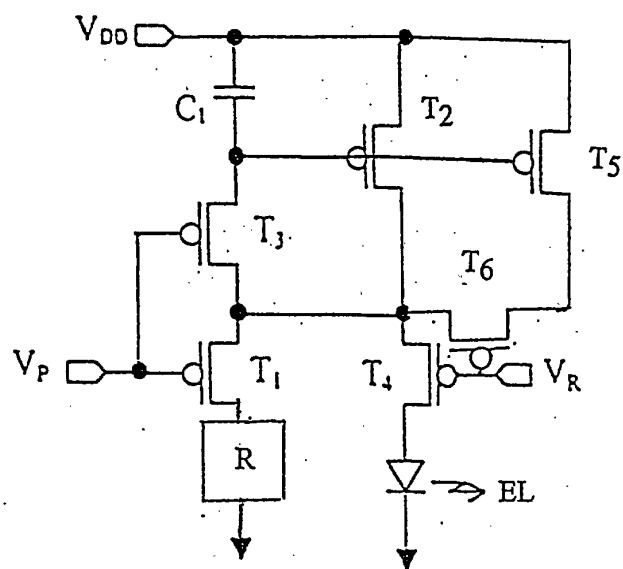


Figure 16

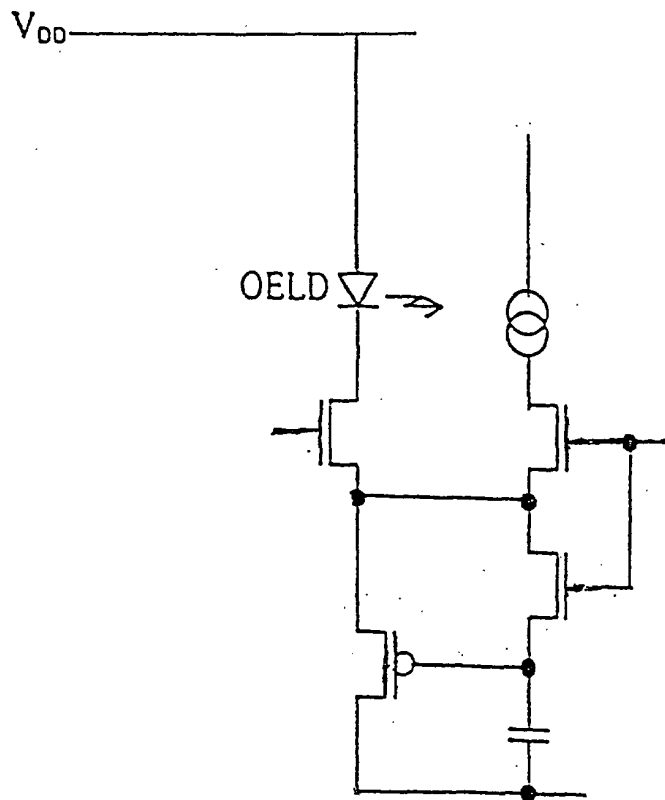


Figure 17



European Patent
Office

EUROPEAN SEARCH REPORT

Application Number
EP 01 30 5898

DOCUMENTS CONSIDERED TO BE RELEVANT			
Category	Citation of document with indication, where appropriate, of relevant passages	Relevant to claim	CLASSIFICATION OF THE APPLICATION (Int.Cl.7)
X	WO 99 65011 A (KONINKL PHILIPS ELECTRONICS NV ; PHILIPS SVENSKA AB (SE)) 16 December 1999 (1999-12-16) * page 8, line 12 - page 13, line 27 * * page 14, line 26 - page 15, line 7 * ----	1-38	G09G3/32 G11C27/02
A	JP 11 282419 A (NEC CORP) 15 October 1999 (1999-10-15) -& US 6 091 203 A (SASAKI HIROSHI ET AL) 18 July 2000 (2000-07-18) * column 7, line 33 - column 8, line 27 * * column 12, line 1 - line 23 * -----	8,9	
			TECHNICAL FIELDS SEARCHED (Int.Cl.7)
			G09G
The present search report has been drawn up for all claims			
Place of search THE HAGUE		Date of completion of the search 31 October 2001	Examiner Amian, D
<p>CATEGORY OF CITED DOCUMENTS</p> <p>X : particularly relevant if taken alone Y : particularly relevant if combined with another document of the same category A : technological background O : non-written disclosure P : intermediate document</p> <p>T : theory or principle underlying the invention E : earlier patent document, but published on, or after the filing date D : document cited in the application L : document cited for other reasons & : member of the same patent family, corresponding document</p>			

EPO FORM 1503 03/92 (P04C01)

**ANNEX TO THE EUROPEAN SEARCH REPORT
ON EUROPEAN PATENT APPLICATION NO.**

EP 01 30 5898

This annex lists the patent family members relating to the patent documents cited in the above-mentioned European search report. The members are as contained in the European Patent Office EDP file on
The European Patent Office is in no way liable for these particulars which are merely given for the purpose of information.

31-10-2001

Patent document cited in search report		Publication date	Patent family member(s)		Publication date
WO 9965011	A	16-12-1999	EP WO	1034530 A2 9965011 A2	13-09-2000 16-12-1999
JP 11282419	A	15-10-1999	US	6091203 A	18-07-2000

EPO FORM P0459

For more details about this annex : see Official Journal of the European Patent Office, No. 12/82

