



(11) **EP 1 903 552 A2**

(12) **EUROPEAN PATENT APPLICATION**

(43) Date of publication:  
**26.03.2008 Bulletin 2008/13**

(51) Int Cl.:  
**G09G 3/32<sup>(2006.01)</sup>**

(21) Application number: **07253750.9**

(22) Date of filing: **21.09.2007**

(84) Designated Contracting States:  
**AT BE BG CH CY CZ DE DK EE ES FI FR GB GR HU IE IS IT LI LT LU LV MC MT NL PL PT RO SE SI SK TR**  
Designated Extension States:  
**AL BA HR MK YU**

(71) Applicant: **Samsung SDI Co., Ltd.**  
**Suwon-si, Gyeonggi-do (KR)**

(72) Inventor: **Chung, Bo Yong**  
**Gyeonggi-do (KR)**

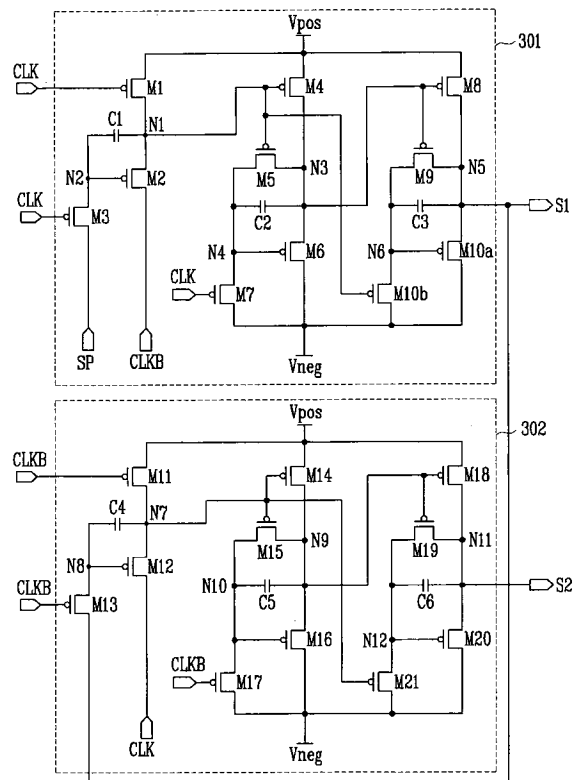
(30) Priority: **22.09.2006 KR 20060092493**

(74) Representative: **Mouteney, Simon James**  
**Marks & Clerk**  
**90 Long Acre**  
**London WC2E 9RA (GB)**

(54) **Scan driver and scan signal driving method and organic light emitting display using the same**

(57) A scan driver includes a plurality of stages connected to each other in series, each of the stages comprised of either all NMOS transistors, or all PMOS transistors, and configured to receive a clock signal, a clock bar signal, and an input signal. Each stage includes a first circuit that is configured to store a first supply voltage and a second supply voltage in response to the input signal and one of the clock signal or the clock bar signal. The first supply voltage and the second supply voltage each correspond to a voltage of the input signal, and provide a first output signal that corresponds to the second supply voltage in response to the second supply voltage being output from a previous stage of the series of stages, and the other of the clock signal or the clock bar signal.

FIG. 4



**EP 1 903 552 A2**

## Description

### BACKGROUND OF THE INVENTION

#### 1. Field of the Invention

[0001] The present invention relates to a scan driver, a scan signal driving method, and an organic light emitting display using the same. More particularly, the present invention relates to a scan driver that may be implemented using PMOS or NMOS transistors, and a scan signal driving method and an organic light emitting display using the same.

#### 2. Description of the Related Art

[0002] Flat panel displays may include a display area that has a plurality of pixels arranged on a substrate in a matrix, and may display an image by selectively applying data signals to the pixels which are connected to corresponding scan lines and data lines.

[0003] A flat panel display may be classified as a passive-matrix display or an active-matrix display according to how the pixels are driven. In terms of resolution, contrast, and operating speed, the active-matrix display, in which each pixel is selectively switched either on or off, has become mainstream.

[0004] A flat panel display may be used as display apparatus for portable information terminals such as a personal computer, a mobile station, a PDA, etc., and monitors for various kinds of information equipment. As flat panel displays, an LCD using a liquid crystal panel, an organic flat display using an OLED (Organic Light Emitting Diode), a PDP using a plasma panel, etc., are well known.

[0005] Recently, various flat panel displays capable of reducing weight and volume, which are disadvantages of cathode ray tubes (CRTs), have been developed. Since an organic light emitting display may exhibit excellent light emitting efficiency, brightness, and viewing angle, has a short response time, and can be made lightweight and thin, it has come into the spotlight.

[0006] In order to reduce manufacturing costs, it may be desirable to form an organic light emitting display having both a pixel portion and a scan driver formed on a substrate. However, the pixel of the organic light emitting display is formed of only PMOS transistors or NMOS transistors, whereas typical scan drivers are CMOS arrangements, including both PMOS transistors and NMOS transistors. Accordingly, the typical scan driver is formed as an external driver and requires additional processes, thereby causing the size and weight of the organic light emitting display to be increased, increasing process complexity, and increasing costs.

### SUMMARY OF THE INVENTION

[0007] The present invention is therefore directed to a

scan driver, a scan signal driving method and an organic light emitting display using the same, which substantially overcome one or more of the problems due to the limitations and disadvantages of the related art.

5 [0008] It is therefore a feature of an embodiment of the present invention to provide a scan driver configured using one of PMOS and NMOS transistors, a method of driving the same, and an organic light emitting display using the same.

10 [0009] It is therefore another feature of an embodiment of the present invention to provide a scan driver configured using a same transistor as used in a pixel driving circuit, a method of driving the same, and an organic light emitting display using the scan driver and the pixel driving circuit.

15 [0010] According to a first aspect of the invention there is provided a scan driver as set out in Claim 1. According to a second aspect of the invention, there is provided a scan driver comprising: a plurality of stages connected to each other in series, each of the stages configured to receive a clock signal, a clock bar signal, and an input signal, wherein each of the clock signal, clock bar signal, and the input signal can be at a respective first level or second level, and each stage includes a first circuit comprising: a first transistor configured to transfer a voltage from a drive power supply to a first node when the clock signal is at the first level; a second transistor configured to transfer a voltage from the clock bar signal to the first node when the voltage level of a second node is at a first level; a third transistor configured to transfer a voltage of the input signal to the second node when the clock signal is at the first level; and a first capacitor connected to the first node and the second node and configured to store a voltage corresponding to the voltage of the drive power supply and the input signal, wherein the first circuit is arranged to provide a first circuit output signal that corresponds to the voltage of the first node, and wherein the first circuit output signal is at the first level when the voltage of the second node is at the first level and the voltage of the clock bar signal is at the first level. In some embodiments, the first level could be a high level of the respective signals and nodes, and the second level could be a low level. In other embodiments, the first level could be a low level of the respective signals and nodes, and the second level could be a high level. Preferred features of the first and second aspects are set out in Claims 2 to 10. According to a third aspect of the invention there is provided a method as set out in Claim 11. Preferred features of the first and second aspects are set out in Claims 12 and 13.

### BRIEF DESCRIPTION OF THE DRAWINGS

55 [0011] The above and other features and advantages of the present invention will become more apparent to those of ordinary skill in the art as a result of the following description of exemplary embodiments thereof with reference to the attached drawings, in which:

**[0012]** FIG. 1 is a block diagram of an organic light emitting display according to an embodiment of the present invention;

**[0013]** FIG. 2 is a circuit diagram of a pixel of the organic light emitting display shown in FIG. 1;

**[0014]** FIG. 3 is a schematic diagram of a scan driver of the organic light emitting display shown in FIG. 1;

**[0015]** FIG. 4 is a circuit diagram of two stages of the scan driver shown in FIG. 3;

**[0016]** FIG. 5 is a timing chart of the stages shown in FIG. 4;

**[0017]** FIG. 6 is a circuit diagram of two stages of a scan driver according to another embodiment of the present invention; and

**[0018]** FIG. 7 is a timing chart of the stages shown in FIG. 6.

### DETAILED DESCRIPTION OF THE INVENTION

**[0019]** The present invention will now be described more fully hereinafter with reference to the accompanying drawings, in which exemplary embodiments of the invention are illustrated. The invention may, however, be embodied in different forms and should not be construed as limited to the embodiments set forth herein. Rather, these embodiments are provided so that this disclosure will be thorough and complete, and will fully convey the scope of the invention to those skilled in the art.

**[0020]** Where an element is shown as being connected to another element, the element may be directly connected to the other element, or may be indirectly connected to the other element via one or more additional elements. In the drawings, elements may be omitted for simplicity and clarity. Like reference numerals refer to like elements throughout.

**[0021]** FIG. 1 illustrates a block diagram of an organic light emitting display according to an embodiment of the present invention. Referring to FIG. 1, the organic light emitting display includes a pixel portion 100, a data driver 200, and a scan driver 300.

**[0022]** The pixel portion 100 includes a plurality of data lines D, e.g., data lines D1, D2, ..., Dm-1, Dm. The pixel portion 100 also includes a plurality of scan lines S, e.g., scan lines S1, S2, ..., Sn-1, Sn. The pixel portion 100 further includes a plurality of pixels 101, which is formed in a region defined by the plurality of data lines D1, D2, ..., Dm-1, Dm, and the plurality of scan lines S1, S2, ..., Sn-1, Sn.

**[0023]** FIG. 2 is a circuit diagram of a pixel 101 of the organic light emitting display shown in FIG. 1. In this embodiment each of the pixels 101 includes a pixel circuit and an organic light emitting diode. The pixel 101 generates a pixel current flowing through the pixel and provides it to the organic light emitting diode according to a data signal transferred through the plurality of data lines D1, D2, ..., Dm-1, Dm and the scan signal transferred through the plurality of scan lines S1, S2, ..., Sn-1, Sn. As shown in FIG. 2, each pixel 101 includes a plurality

of thin film transistors. In some embodiments, the thin film transistors may all be PMOS transistors, or they may all be NMOS transistors.

**[0024]** The data driver 200 is connected to the plurality of data lines D1, D2, ..., Dm-1, Dm. The data driver 200 generates data signals and provides the data signals to the plurality of data lines D1, D2, ..., Dm-1, Dm.

**[0025]** The scan driver 300 is connected to the plurality of scan lines S1, S2, ..., Sn-1, Sn. The scan driver 300 generates scan signals and provides the scan signals to the plurality of scan lines S1, S2, ..., Sn-1, Sn. A specific row can be selected by the scan signal, and a data signal is provided to a pixel 101 positioned at the selected specific row, so that an electric current is generated in the pixel 101 corresponding to the data signal.

**[0026]** In a scan driver according to an embodiment of the present invention, where the thin film transistors of the pixel portion 100 are PMOS transistors, the scan driver 300 is formed of PMOS transistors, and where thin film transistors of the pixel portion 100 are NMOS transistors, the scan driver 300 may be formed of NMOS transistors. Thus, the scan driver 300 according to some embodiments of the present invention can be formed by the same process used to form the pixel portion 100, and the pixel portion 100 and the scan driver 300 can be formed on a same substrate.

**[0027]** Referring to FIG. 2, the pixel 101 is connected to a data line Dm, a scan line Sn, and a pixel power supply line ELVDD. The pixel 101 includes a first transistor T1, a second transistor T2, a capacitor Cst, and an OLED (organic light emitting diode).

**[0028]** Where the pixel portion 101 is formed using PMOS transistors, a source of the first transistor T1 is connected to the pixel power supply line ELVDD, a drain thereof is connected to the OLED, and a gate thereof is connected to a first node N1. A source of the second transistor T2 is connected to the data line Dm, a drain thereof is connected to the first node N1, and a gate thereof is connected to the scan line Sn. The capacitor Cst is connected between the first node N1 and the pixel power supply line ELVDD, and can maintain a voltage between the first node N1 and the pixel power supply line ELVDD. The OLED includes an anode electrode, a cathode electrode, and an emission layer. The anode electrode of the OLED is connected to the drain of the first transistor T1, a cathode electrode thereof is connected to a power supply ELVSS, which may be a lower voltage power supply. When an electric current flows from the anode electrode of the OLED to the cathode electrode thereof, the emission layer emits light, with a luminance of the light corresponding to the amount of the electric current.

**[0029]** FIG. 3 is a schematic diagram of a scan driver of the organic light emitting display shown in FIG. 1. Referring to FIG. 3, the scan driver 300 includes a plurality of stages 301, 302, ..., 30n-1, 30n, which are connected to each other in series. Among the stages, the first stage 301 receives a clock signal CLK, a clock bar signal CLKB, and a start pulse SP. Stages following the first stage 301,

i.e., the stages 302, ..., 30n-1, 30n, receive the clock signal CLK, the clock bar signal CLKB, and the output signal of a previous stage as scan signals S1, S2, ..., Sn-2, Sn-1,.

**[0030]** FIG. 4 is a circuit diagram of two stages 301 and 302 of the scan driver 300 shown in FIG. 3. Referring to FIG. 4, the first stage 301 includes a first circuit, a second circuit, and a third circuit. The second stage 302 includes a fourth circuit, a fifth circuit, and a sixth circuit.

**[0031]** In some embodiments, the first through sixth circuits are implemented using PMOS transistors. The first circuit includes a first transistor M1, a second transistor M2, a third transistor M3, and a first capacitor C1. A source of the first transistor M1 is connected to a first power supply Vpos, a gate thereof is connected to a clock terminal CLK, and a drain thereof is connected to a first node N1. A source of the second transistor M2 is connected to the first node N1, a gate thereof is connected to a second node N2, and a drain thereof is connected to a clock bar terminal CLKB. A source of the third transistor M3 is connected to the second node N2, a gate thereof is connected to the clock terminal CLK, and a drain thereof is connected to a start pulse input terminal SP. The first capacitor C1 is connected between the first node N1 and the second node N2.

**[0032]** The second circuit includes a fourth transistor M4, a fifth transistor M5, a sixth transistor M6, a seventh transistor M7, and a second capacitor C2. A source of the fourth transistor M4 is connected to a first power supply Vpos, a gate thereof is connected to the first node N1, and a drain thereof is connected to a third node N3. A source of the fifth transistor M5 is connected to a third node N3, a gate thereof is connected to the first node N1, and a drain thereof is connected to a fourth node N4. A source of the sixth transistor M6 is connected to the third node N3, a gate thereof is connected to the fourth node N4, and a drain thereof is connected to a second power supply Vneg, which has a voltage less than that of the first power supply Vpos. A source of the seventh transistor M7 is connected to the fourth node N4, a gate thereof is connected to a clock terminal CLK, and a drain thereof is connected to the first power supply Vneg. The second capacitor C2 is connected between the third node N3 and the fourth node N4.

**[0033]** The third circuit includes an eighth transistor M8, a ninth transistor M9, a tenth A transistor M10a, a tenth B M10b, and a third capacitor C3. A source of the eighth transistor M8 is connected to the first power supply Vpos, a gate thereof is connected to the third node N3, and a drain thereof is connected to a fifth node N5. A source of the ninth transistor M9 is connected to the fifth node N5, a gate thereof is connected to the third node N3, and a drain thereof is connected to a sixth node N6. A source of the tenth A transistor M10a is connected to the fifth node N5, a gate thereof is connected to the sixth node N6, and a drain thereof is connected to the second power supply Vneg. A source of the tenth B transistor M10b is connected to the sixth node N6, a gate thereof

is connected to the first node N1, and a drain thereof is connected to the second power supply Vneg. The third capacitor C3 is connected between the fifth node N5 and the sixth node N6. Further, the fifth node N5 is used as an output terminal.

**[0034]** The fourth circuit includes an eleventh transistor M11, a twelfth transistor M12, a thirteenth transistor M13, and a fourth capacitor C4. A source of the eleventh transistor M11 is connected to the first power supply Vpos, a gate thereof is connected to a clock bar terminal CLKB, and a drain thereof is connected to a seventh node N7. A source of the twelfth transistor M12 is connected to the seventh node N7, a gate thereof is connected to an eighth node N8, and a drain thereof is connected to a clock terminal CLK. A source of the thirteenth transistor M13 is connected to the eighth node N8, a gate thereof is connected to the clock bar terminal CLKB, and a drain thereof is connected to the output terminal of the first stage 301. The fourth capacitor C4 is connected between the seventh node N7 and the eighth node N8.

**[0035]** The fifth circuit includes a fourteenth transistor M14, a fifteenth transistor M15, a sixteenth transistor M16, a seventeenth transistor M17, and a fifth capacitor C5. A source of the fourteenth transistor M14 is connected to the first power supply Vpos, a gate thereof is connected to the seventh node N7, and a drain thereof is connected to a ninth node N9. A source of the fifteenth transistor M15 is connected to the ninth node N9, a gate thereof is connected to the seventh node N7, a drain thereof is connected to a tenth node N10. A source of the sixteenth transistor M16 is connected to the ninth node N9, a gate thereof is connected to the tenth node N10, and a drain thereof is connected to the second power supply Vneg having a voltage less than that of the first power supply Vpos. A source of the seventeenth transistor M17 is connected to the tenth node N10, a gate thereof is connected to the clock bar terminal CLKB, and a drain thereof is connected to the first power supply Vneg. The fifth capacitor C5 is connected between the ninth node N9 and the tenth node N10.

**[0036]** The sixth circuit includes an eighteenth transistor M18, a nineteenth transistor M19, a twentieth transistor M20, a twenty-first transistor M21, and a sixth capacitor C6. A source of the eighteenth transistor M18 is connected to the first power supply Vpos, a gate thereof is connected to the ninth node N9, and a drain thereof is connected to an eleventh node N11. A source of the nineteenth transistor M19 is connected to the eleventh node N11, a gate thereof is connected to the ninth node N9, and a drain thereof is connected to a twelfth node N12. A source of the twentieth transistor M20 is connected to the eleventh node N11, a gate thereof is connected to the twelfth node N12, and a drain thereof is connected to the second power supply Vneg. A source of the twenty-first transistor M21 is connected to the twelfth node N12, a gate thereof is connected to the seventh node N7, and a drain thereof is connected to the second power supply Vneg. The sixth capacitor C6 is connected between the eleventh node

N11 and the twelfth node N12. Further, the eleventh node N11 is used as an output terminal. The first through twenty-first transistors M1-M21 may be PMOS transistors.

**[0037]** FIG. 5 is a timing chart of the stages shown in FIG. 4. The following is a description of an exemplary operation of the stages 301 and 302 shown in FIG. 4. Referring to FIG. 4, in the first stage 301, the first circuit receives the clock signal CLK, the clock bar signal CLKB, and a start pulse SP, and operates according to the received signals. The second circuit receives the clock signal CLK and the output signal of the first circuit, i.e., a voltage of the first node N1, and operates according to the received signals. The third circuit operates according to the output signal of the first circuit, i.e., the voltage of the first node N1, and an output signal of the second circuit, i.e., the voltage of the third node N3.

**[0038]** In the second stage 302, the fourth circuit receives the clock signal CLK, the clock bar signal CLKB, and a first scan signal S1, i.e., an output signal of the third circuit at the node N5, and operates according to the received signals. The fifth circuit receives the clock bar signal CLKB and an output signal of the fourth circuit, i.e., a voltage of the seventh node N7, and operates according to the received signals. The sixth circuit receives an output signal of the fourth circuit, namely, the voltage of the seventh node N7, and an output signal of the fifth circuit, i.e., a voltage of the ninth node N9.

**[0039]** An exemplary operation of the first and second stages 301 and 302 will now be described with reference to FIG. 4 and FIG. 5, which illustrates a timing chart of the stages shown in FIG. 4. Referring to FIG. 5, the operation will be described starting at a point A, at which point the clock signal CLK has a low level, the clock bar signal CLKB has a high level, and the start pulse signal SP has a high level.

**[0040]** In operation of the first circuit 301, at point A, when the clock signal CLK has a low level, the start pulse SP has a high level, and the clock bar signal CLKB has a high level, then the first transistor M1 and the third transistor M3 is turned-on, a voltage of the first power supply Vpos is provided to the first node N1, and the start pulse SP is transferred to the second node N2. Thus, both the first node N1 and the second node N2 are at a high level. The voltage of the first node N1 and the voltage of the second node N2 are maintained by the first capacitor C1, and the voltage of the second node N2 is at a high level to maintain the second transistor M2 in a turned-off state. The voltage of the first node N1 is a voltage of the first power supply Vpos.

**[0041]** In the next half-cycle of the clock signals, when the clock signal CLK has a high level, the start pulse SP has a high level, and the clock bar signal CLKB has a low level, then the first transistor M1 and the third transistor M3 are turned-off, thereby causing both terminals of the first capacitor C1 to be in a floating state. Accordingly, the first node N1 maintains a voltage of the first power supply Vpos by the first capacitor C1. A gate voltage of the second transistor M2 is at a high level due to

the first capacitor C1, and thus the second transistor M2 is in a turned-off state.

**[0042]** In the next half-cycle of the clock signals, when the clock signal CLK is at a low level, the start pulse SP is at a low level, and the clock bar signal CLKB is at a high level, then the first transistor M1 and the third transistor M3 are again be turned-on. Accordingly, a voltage of the first power supply Vpos is again provided to the first node N1 and the start pulse is again transferred to the second node N2. Since the start pulse SP is at a low level, the second node N2 is driven to a low level by the start pulse SP, placing the second transistor M2 in a turned-on state. The drain of the second transistor M2 is at a high level due to the clock bar signal CLKB, and so, with the clock bar signal CLKB (high) and Vpos across the second transistor M2, no electric current flows across the second transistor M2. Accordingly, a voltage of the first node N1 maintains the voltage of the first power supply Vpos. As shown in Figure 5, in some embodiments of the invention, the width of the start pulse SP at a low level may be greater than the width of the clock signal CLK being at a low level. In other words, as shown in Figure 5, while the period at which the start pulse SP and the clock signal CLK are both at the low level is a half-cycle, the width of the low period of the start pulse SP may be greater than a half-cycle.

**[0043]** In the next half-cycle of the clock signals, when the clock signal CLK is at a high level, the start pulse SP is at a high level, and the clock bar signal CLKB is at a low level, the first transistor M1 and the third transistor M3 is again turned-off, thereby causing both terminals of the first capacitor C1 to again be in a floating state. At this time, the second node N2 maintains a low level. Accordingly, a gate voltage of the second transistor M2 is at a low level, keeping the second transistor M2 in a turned-on state, and a current path exists from the source of the second transistor M2 to the drain thereof, thereby reducing the voltage of the first node N1. At this time, a voltage of the first node N1 maintains a low level from the first capacitor C1, and the voltage of the first node N1 is reduced by a voltage of the second power supply Vneg, which causes a signal characteristic of the scan signal to be improved.

**[0044]** When the first node N1 has a high level voltage and the third node N3 has a low level voltage, the third circuit causes a voltage of the fifth node N5, i.e., a voltage of the output terminal, to be at a high level. When the first node N1 has a low level voltage and the third node N3 has a high level voltage, the third circuit causes a voltage of the fifth node N5, i.e., the voltage of the an output terminal, to be at a low level.

**[0045]** The second stage 302 has substantially the same functions as those of the first stage 301. The second stage 302 receives a voltage of the output terminal of the first stage 301, i.e., the first scan signal S1, and operates according to the scan signal S 1 instead of the start pulse SP.

**[0046]** In operation of the second circuit when the clock

signal CKL has a low level and the first node N1 has a high level, then the seventh transistor M7 is turned-on and the fourth transistor M4 and the fifth transistor M5 are turned-off. At this time, a voltage of the fourth node N4 is that of the second power supply Vneg as a result of the operation of the seventh transistor M7 so that the sixth M6 is turned-on. Accordingly, a voltage of the third node N3 is at a low level since the current flows from the third node N3 to the second power supply Vneg. At this time, a gate of the sixth transistor M6 maintains a low level by the second capacitor C2. The voltage of the third node N3 is at a voltage of the second power supply Vneg since the current flows from the third node N3 to the second power supply Vneg.

**[0047]** Further, when the clock signal CKL has a high level and a voltage of the first node N1 has a low level, then the fourth transistor M4 and the fifth transistor M5 are turned-on by the voltage of the first node N1 although the seventh transistor M7 is turned-off by the clock signal CKL. Accordingly, a voltage of the first power supply Vpos is transferred to the third node N3 and the voltages of the third node N3 and the fourth node N4 are the same. Therefore, the sixth transistor M6 is turned-off so that the third node N3 maintains the voltage of the first node N1 and a high level signal is outputted.

**[0048]** In operation of the third circuit when the voltage of the first node N1 has a high level the voltage of the third node N3 has a low level. The eighth transistor M8 and the ninth transistor M9 are turned-on and the tenth B transistor M10b has a high level so that the voltages of the fifth node N5 and the sixth node N6 are the same and the tenth A transistor M10a is turned-off. Accordingly, the voltage of the fifth node N5 has a high level since it maintains the voltage of the first node N1. When the voltage of the first node N1 has a low level the voltage of the third node N3 has a high level. And, the tenth B transistor M10b is turned-on and the eighth transistor M8 and the ninth transistor M9 is turned-off so that the current flows from the fifth node N5 to the second power supply Vneg. At this time, the voltage of the fifth node N5 is the voltage of the second power supply Vneg since the gate voltage of the tenth A transistor M10a is maintained.

**[0049]** FIG. 6 illustrates a circuit diagram of two stages of a scan driver according to another embodiment of the present invention, and FIG. 7 illustrates a timing chart of the stages shown in FIG. 6. A stage 301' according to this embodiment of the present invention includes a first circuit, a second circuit and a third circuit, and a subsequent stage 302' includes a fourth circuit, a fifth circuit, and a sixth circuit. In this embodiment, the circuits are formed using NMOS transistors. The first stage 301' receives a start pulse SP' that is at a low level and then transitions to a high level, and the first stage 301' outputs a first scan signal S1' that has a high-level pulse. The second stage 302' receives the first scan signal S1' and outputs a second scan signal S2'.

**[0050]** In the scan driver, a scan signal driving method, and an organic light emitting display using the same ac-

ording to the present invention, the scan driver can be formed using all PMOS transistors or all NMOS transistors. Accordingly, when a pixel formed on a substrate is manufactured using only PMOS transistors or only NMOS transistors, the scan driver can similarly be formed using the PMOS transistors or the NMOS transistors, respectively. Thus, the scan driver can be formed using a same process as the pixel portion. This allows the process to be simplified, the size and weight of the organic light emitting display to be reduced, and manufacturing costs to be reduced. In addition, as the scan signal can have a voltage of a second power supply, a signal characteristic thereof may be enhanced.

**[0051]** Exemplary embodiments of the present invention have been disclosed herein, and although specific terms are employed, they are used and are to be interpreted in a generic and descriptive sense only and not for purpose of limitation. Accordingly, it will be understood by those of ordinary skill in the art that various changes in form and details may be made without departing from the scope of the present invention as set forth in the following claims.

## 25 Claims

### 1. A scan driver, comprising:

a plurality of stages connected to each other in series, each of the stages configured to receive a clock signal, a clock bar signal, and an input signal, wherein each stage includes a first circuit that is configured to store a first voltage and a second voltage in response to the input signal and one of the clock signal or the clock bar signal, the first voltage and the second voltage each corresponding to a voltage of the input signal, and provide a first circuit output signal that corresponds to the second voltage in response to the second voltage and the other of the clock signal or the clock bar signal.

### 2. A scan driver according to claim 1, wherein the input signal is a start pulse when the stage is a first stage, and the input signal is an output signal of a previous stage when the stage is not the first stage.

### 3. A scan driver according to claim 1 or claim 2, wherein the first circuit in a first stage includes:

a first transistor configured to transfer a voltage from a drive power supply to a first node in response to the clock signal;  
a second transistor configured to control a voltage of the first node in response to a voltage of a second node;  
a third transistor configured to transfer a voltage of the input signal to the second node in re-

sponse to the clock signal; and  
 a first capacitor connected to the first node and  
 the second node and configured to store a volt-  
 age corresponding to the drive power supply and  
 the input signal,

wherein the first circuit output signal corresponds to  
 the voltage of the first node.

4. A scan driver according to claim 3, wherein the first  
 circuit in a second stage directly succeeding the first  
 stage includes:

an eleventh transistor configured to transfer a  
 voltage of a drive power supply to a seventh  
 node in response to the clock bar signal;  
 a twelfth transistor configured to control a volt-  
 age of the seventh node in response to a voltage  
 of an eighth node;  
 a thirteenth transistor configured to transfer a  
 voltage of a signal output by the first stage to  
 the eighth node in response to the clock bar sig-  
 nal; and  
 a fourth capacitor connected to the seventh  
 node and the eighth node and configured to  
 store a voltage corresponding to the drive power  
 supply and the voltage of the signal output by  
 the first stage,

wherein the first circuit in the second stage is con-  
 figured to output a signal having a voltage corre-  
 sponding to the voltage of the seventh node.

5. A scan driver according to any one of claims 1 to 4,  
 wherein each stage further includes:

a second circuit configured to receive the first  
 circuit output signal from the first circuit and the  
 one of the clock signal or the clock bar signal,  
 and configured to provide a second output sig-  
 nal; and  
 a third circuit configured to receive the first circuit  
 output signal and the second output circuit sig-  
 nal, and configured to provide a scan signal as  
 an output of the stage.

6. A scan driver according to claim 5, wherein the input  
 signal includes a first pulse having a pulse width  
 equal to one-half cycle of the clock signal, the scan  
 signal includes a second pulse having a pulse width  
 equal to that of the first pulse, the polarity of the first  
 pulse is the same as the polarity of the second pulse,  
 and the second pulse is offset from the first pulse by  
 one half clock cycle.

7. A scan driver according to claim 5 or 6, wherein the  
 second circuit includes:

a fourth transistor configured to transfer a drive  
 power to a third node in response to the first  
 circuit output signal;  
 a fifth transistor configured to control the third  
 and fourth nodes to have a same voltage in re-  
 sponse to the first circuit output signal;  
 a sixth transistor configured to control a voltage  
 of the third node in response to a voltage of the  
 fourth node;  
 a seventh transistor configured to control a volt-  
 age of the fourth node in response to the clock  
 signal; and  
 a second capacitor connected to the third node  
 and the fourth node,

wherein the second circuit output signal corresponds  
 to the voltage of the third node.

8. A scan driver according to any one of claims 5 to 7,  
 wherein the third circuit includes:

an eighth transistor configured to transfer a drive  
 power to a fifth node in response to the second  
 circuit output signal;  
 a ninth transistor configured to control the fifth  
 node and a sixth node to having a same voltage  
 in response to the second output signal;  
 a tenth A transistor configured to control the volt-  
 age of the fifth node in response to a voltage of  
 the sixth node;  
 a tenth B transistor configured to control the volt-  
 age of the sixth node in response to the first out-  
 put signal; and  
 a third capacitor connected to the fifth node and  
 the sixth node,

wherein the scan signal corresponds to the voltage  
 of the fifth node.

9. A scan driver according to any one of claims 5 to 8,  
 wherein the first, second and third circuits are formed  
 using one of PMOS transistors and NMOS transis-  
 tors.

10. An organic light emitting display, comprising:

a pixel portion having at least one pixel connect-  
 ed to a data line and a scan line;  
 a data driver configured to provide a data signal  
 to the data line; and  
 a scan driver configured to provide a scan signal  
 to the scan line,

wherein the scan driver is according to any one of  
 claims 1 to 9.:

11. A method of sequentially driving a scan signal in a  
 stage of a scan driver that includes a plurality of stag-

es connected to each other in series, each of the stages configured to receive a clock signal, a clock bar signal, and an input signal, the method comprising:

5

storing a first voltage and a second voltage in the stage in response to the input signal and one of the clock signal or the clock bar signal, the first voltage and the second voltage each corresponding to a voltage of the input signal; and providing a first output signal that corresponds to the second voltage in response to the second voltage and the other of the clock signal or the clock bar signal.

10

15

- 12.** A method according to claim 11, wherein the input signal is a start pulse when the stage is a first stage, and the input signal is an output signal of a previous stage when the stage is not the first stage.

20

- 13.** A method according to claim 11 or 12, further comprising:

receiving the first circuit output signal and the one of the clock signal or the clock bar signal, and providing a second output signal in response thereto; and receiving the first circuit output signal and the second circuit output signal, and providing a scan signal in response thereto.

25

30

35

40

45

50

55

FIG. 1

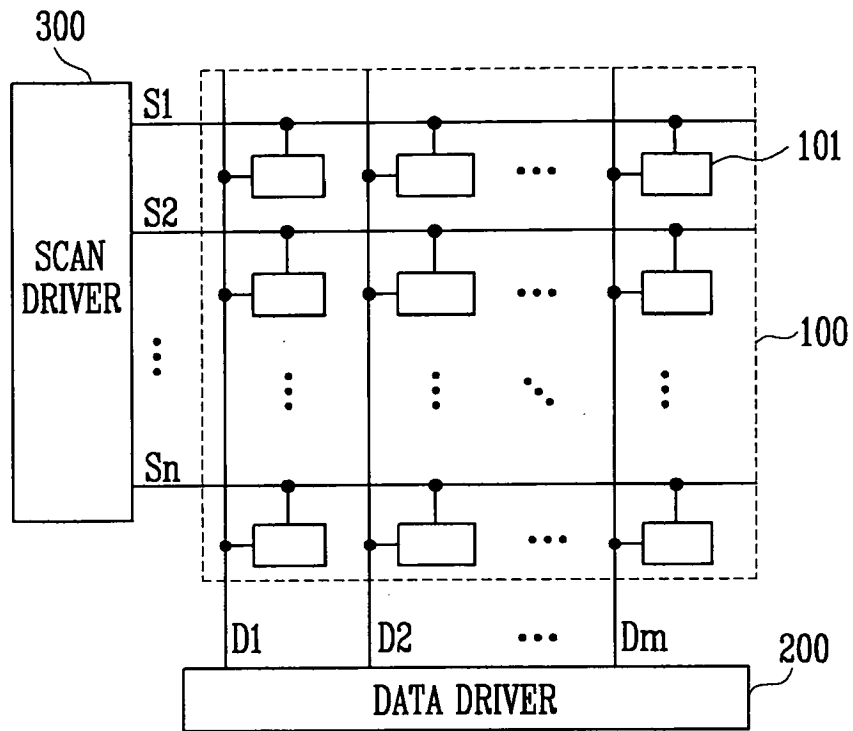


FIG. 2

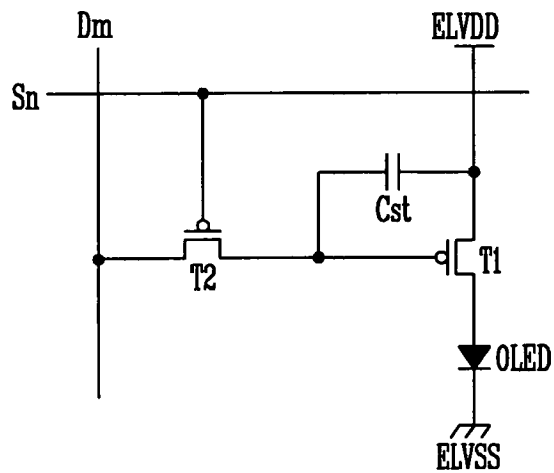


FIG. 3

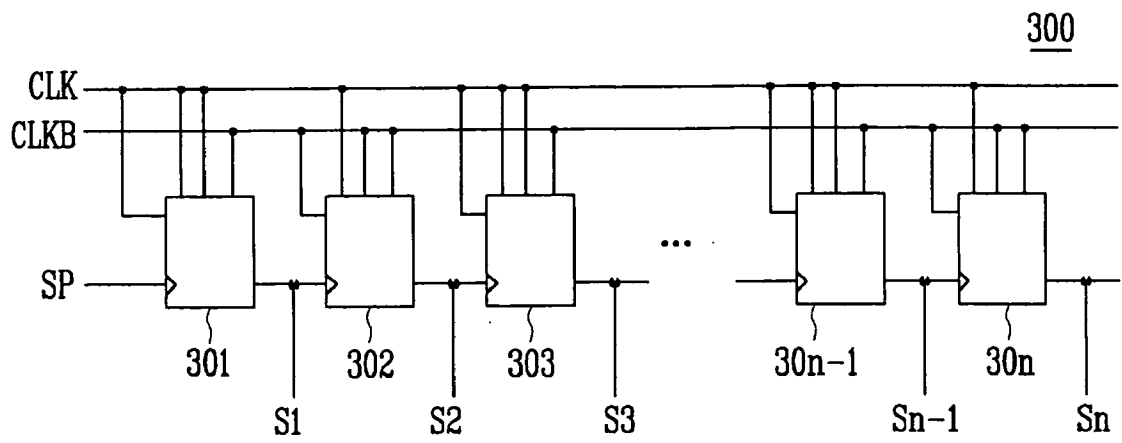
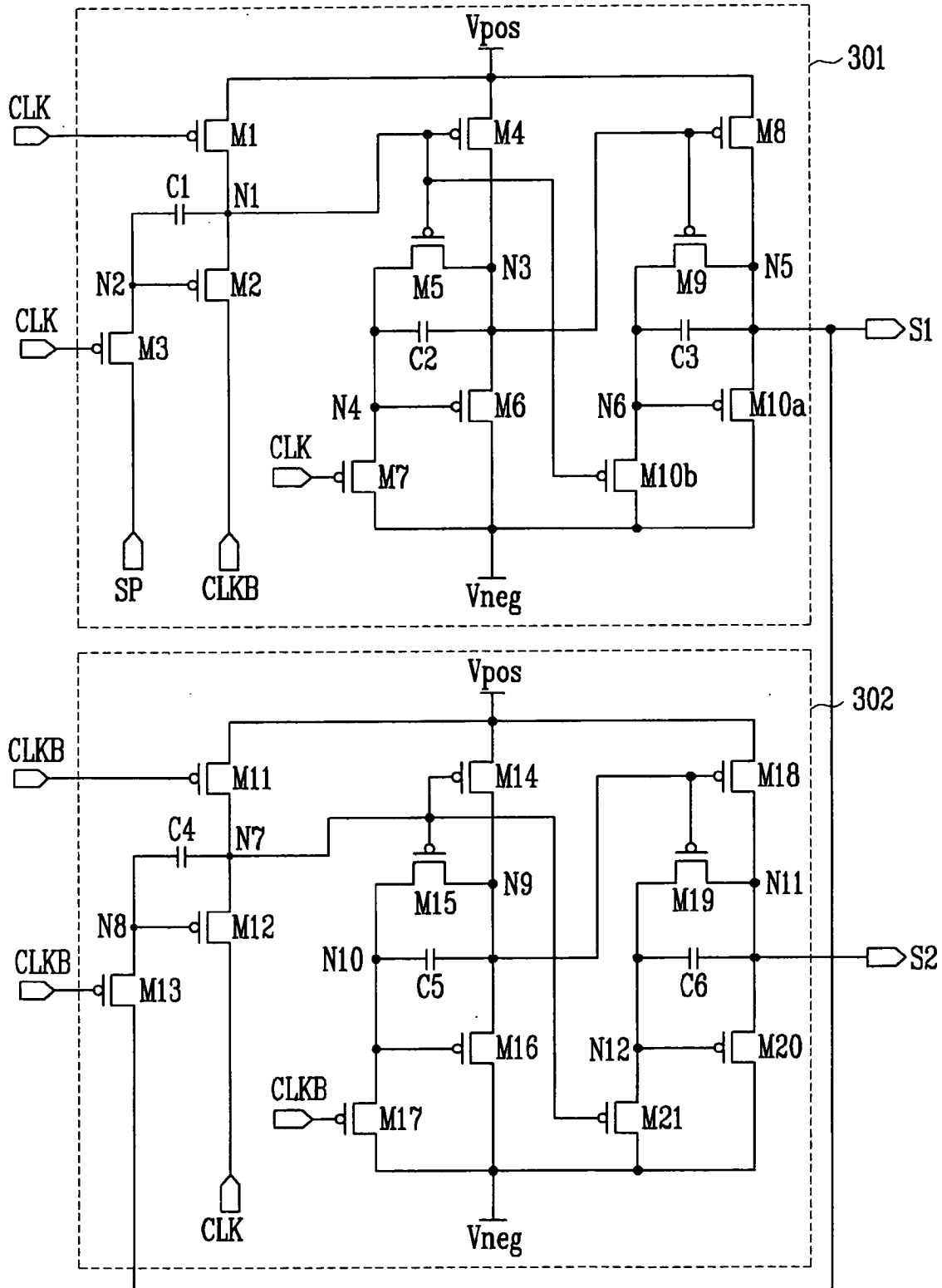


FIG. 4



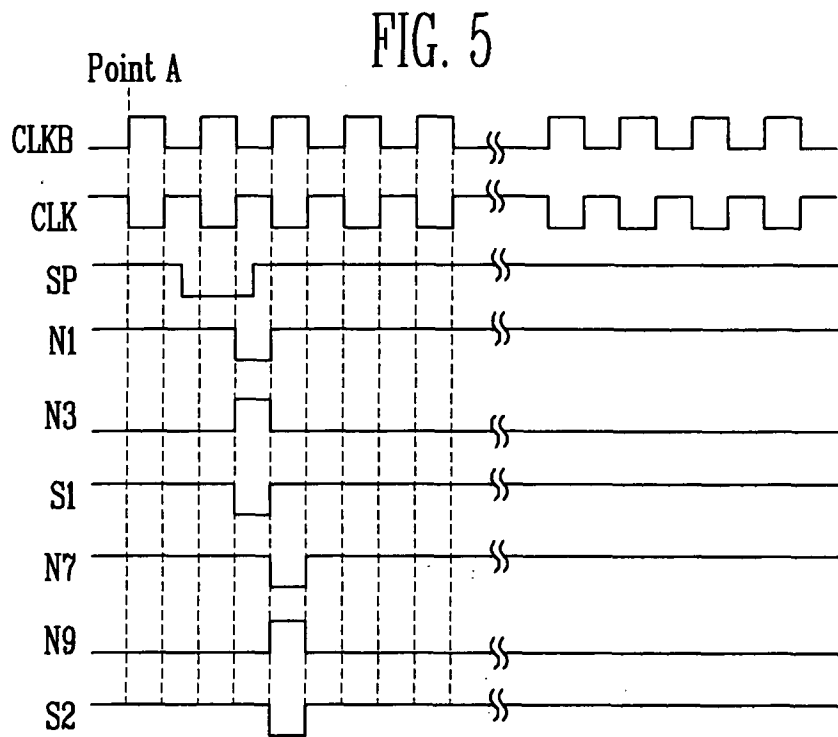


FIG. 6

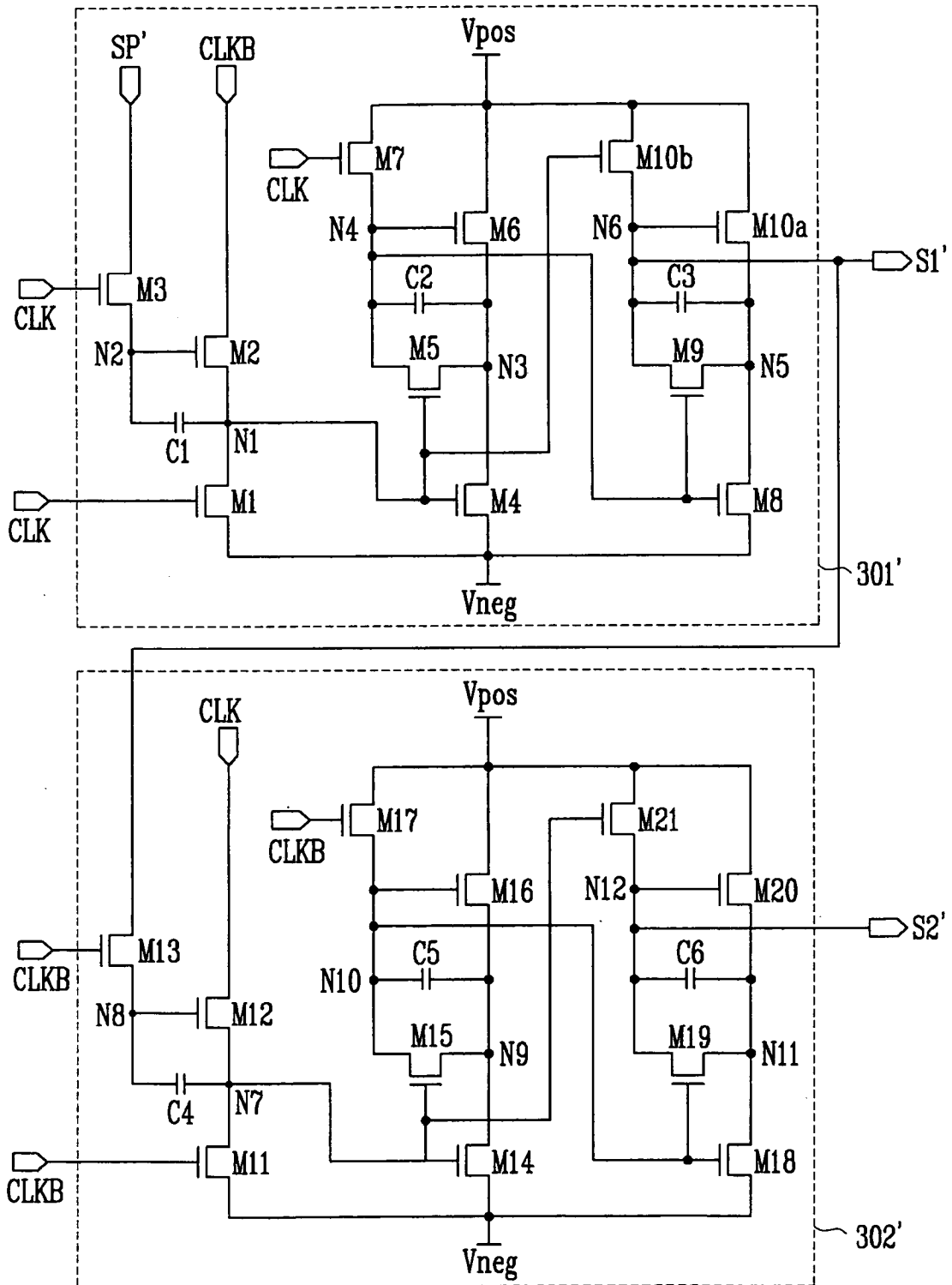
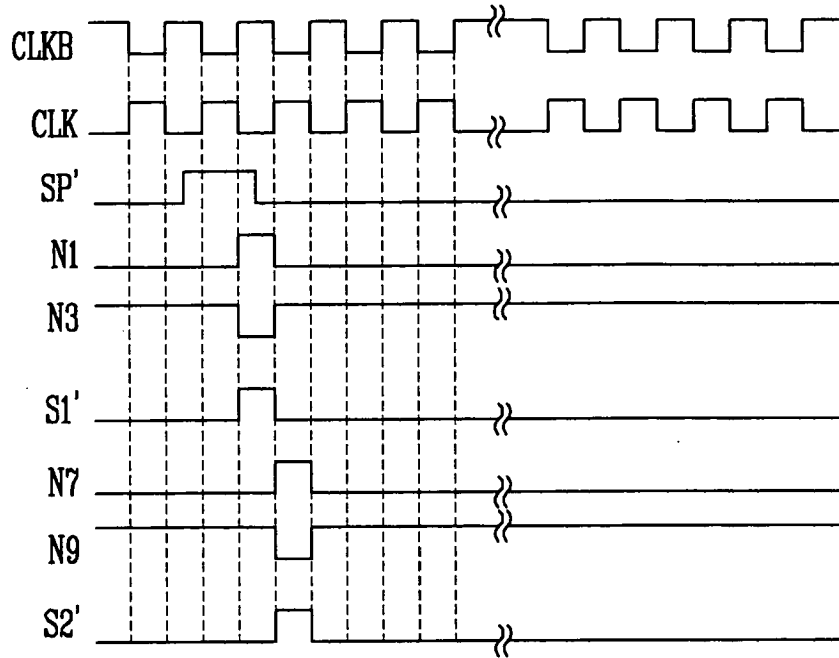


FIG. 7



专利名称(译)	扫描驱动器和扫描信号驱动方法以及使用其的有机发光显示器		
公开(公告)号	<a href="#">EP1903552A2</a>	公开(公告)日	2008-03-26
申请号	EP2007253750	申请日	2007-09-21
[标]申请(专利权)人(译)	三星斯笛爱股份有限公司		
申请(专利权)人(译)	三星SDI CO., LTD.		
当前申请(专利权)人(译)	三星SDI CO., LTD.		
[标]发明人	CHUNG BO YONG		
发明人	CHUNG, BO YONG		
IPC分类号	G09G3/32 G11C19/18		
CPC分类号	G09G3/3225 G09G3/3266 G09G2300/0809 G11C19/184		
优先权	1020060092493 2006-09-22 KR		
其他公开文献	EP1903552B1 EP1903552A3		
外部链接	<a href="#">Espacenet</a>		

摘要(译)

扫描驱动器包括彼此串联连接的多个级，每个级包括所有NMOS晶体管或所有PMOS晶体管，并且被配置为接收时钟信号，时钟条信号和输入信号。每个级包括第一电路，该第一电路被配置为响应于输入信号以及时钟信号或时钟条信号之一存储第一电源电压和第二电源电压。第一电源电压和第二电源电压各自对应于输入信号的电压，并响应于从该系列级的前一级输出的第二电源电压而提供对应于第二电源电压的第一输出信号。，以及时钟信号或时钟信号的另一个。

