

(19)



(11)

**EP 1 764 772 B1**

(12)

**EUROPEAN PATENT SPECIFICATION**

(45) Date of publication and mention of the grant of the patent:  
**26.02.2014 Bulletin 2014/09**

(51) Int Cl.:  
**G09G 3/32<sup>(2006.01)</sup>**

(21) Application number: **06254812.8**

(22) Date of filing: **15.09.2006**

**(54) Organic light emitting diode display device and method of operating the same**

Organische lichtemittierende Diodenanzeige und Verfahren zum Betrieb desselben

Affichage à diodes électroluminescentes organiques(OLED) et procédé pour utiliser ces derniers

(84) Designated Contracting States:  
**DE FR GB**

(30) Priority: **15.09.2005 KR 20050086440**

(43) Date of publication of application:  
**21.03.2007 Bulletin 2007/12**

(73) Proprietor: **Samsung Display Co., Ltd. Gyeonggi-Do (KR)**

(72) Inventors:  
 • **Choi, Sang-Moo, c/o Samsung SDI Co., Legal Giheung-eup, Yongin-si, Gyeonggi-do (KR)**

• **Park, Yong-Sung, c/o Samsung SDI Co., Legal Giheung-eup, Yongin-si, Gyeonggi-do (KR)**

(74) Representative: **Mounteney, Simon James Marks & Clerk LLP 90 Long Acre London WC2E 9RA (GB)**

(56) References cited:  
**EP-A- 0 837 445 EP-A- 1 577 869**  
**WO-A-2004/086347 WO-A-2005/116968**  
**WO-A1-2004/066250 US-A1- 2004 041 754**  
**US-A1- 2005 024 297 US-B1- 6 366 026**

**EP 1 764 772 B1**

Note: Within nine months of the publication of the mention of the grant of the European patent in the European Patent Bulletin, any person may give notice to the European Patent Office of opposition to that patent, in accordance with the Implementing Regulations. Notice of opposition shall not be deemed to have been filed until the opposition fee has been paid. (Art. 99(1) European Patent Convention).

## Description

### BACKGROUND OF THE INVENTION

#### Field of the Invention

**[0001]** The present invention relates to an organic light emitting diode (OLED) display device, and more particularly, to an OLED device in which demultiplexers supply data signals using double data lines in order to secure sufficient time to supply the data signals to the data lines and transmit the data signals to pixels.

#### Description of the Related Technology

**[0002]** Recent years have seen considerable research into flat panel displays (FPDs) because they can be made smaller and lighter than display devices using cathode ray tubes (CRTs). Among the FPDs, an organic light emitting diode (OLED) display device has attracted much attention as the next-generation FPD because of excellent luminance and viewing angle characteristics.

**[0003]** Unlike a liquid crystal display device (LCD), the OLED display device needs no additional light source and makes use of a light emitting diodes that emit certain colors of light. The light emitting diode emits light with brightness corresponding to the amount of driving current that is supplied to an anode electrode.

**[0004]** FIG. 1 is a schematic diagram of a conventional OLED device.

**[0005]** The OLED display device includes a pixel portion 10, a scan driver 20, a data driver 30, and an emission driver 40.

**[0006]** The scan driver 20 sequentially supplies scan signals to scan lines S1-Sn in response to scan control signals (i.e., a start pulse and a clock signal) output from a timing controller (not shown).

**[0007]** The data driver 30 supplies data voltages corresponding to red (R), green (G), and blue (B) data to data lines D1-Dm in response to data control signals output from the timing controller.

**[0008]** The emission driver 40 comprises shift registers and sequentially supplies emission control signals to emission control lines E1-En in response to a start pulse and a clock signal output from the timing controller.

**[0009]** The pixel portion 10 includes a plurality of pixels P11-Pnm, which are located in regions where a plurality of scan lines S1-Sn and a plurality of emission control lines E1-En intersect a plurality of data lines D1-Dm. The pixel portion 10 displays an image according to an applied data voltage.

**[0010]** Each of the pixels P11-Pnm includes R, G, and B sub-pixels.

**[0011]** In the pixel portion 10, the R, G, and B sub-pixels have the same circuit construction and emit R, G, and B light with brightness corresponding to current supplied to each organic light emitting diode sub-pixel. Thus, each of the pixels P11-Pnm combines light emitted from

the R, G, and B sub-pixels and displays a specific color according to the combination of sub-pixel color and brightness.

**[0012]** Such an OLED device requires three data driving circuits to supply data signals from the data driver 30 to three (R, G, and B) data lines connected to the pixel portion 10. However, it is difficult to provide the data driving circuits in a number equal to the number of the data lines due to the area of the panel and the fabrication cost. Also, as the number of pixels of the OLED device increases, the OLED device needs more data driving circuits.

**[0013]** FIG. 2 is a schematic diagram of the data driver of a conventional OLED device.

**[0014]** Referring to FIG. 2, the conventional OLED device includes a data driver 30 having demultiplexers 32.

**[0015]** The data driver 30 includes an m number of demultiplexers 32 and an m number of data driving circuits 31. The demultiplexers 32 supply data signals to data lines D1-Dk of a plurality of pixels P11-P1k of a pixel portion 10. The data driving circuits 31 are connected to the demultiplexers 32 and supply data signals to the demultiplexers 32, respectively.

**[0016]** Each of the data driving circuits 31 receives R, G, and B data from a timing controller (not shown), converts the data into an analog data signal, and supplies the data signal to a data output line DLm.

**[0017]** The data signal is sequentially supplied through the data output line DLm to an input terminal of the demultiplexer 32.

**[0018]** The demultiplexer 32 sequentially supplies the data signal to the pixels P11-P1k in response to a control signal output from the timing controller.

**[0019]** Accordingly, since the data signal is supplied from one demultiplexer 32 to k data lines D1-Dk, the number of the data driving circuits 31 is reduced to 1/k.

**[0020]** In such an OLED device, since a plurality of data lines D1-Dmk are formed on the pixels P11-Pnmk across the pixel portion 10, capacitors are formed. Accordingly, after the capacitor of the data line Dmk is charged with a predetermined electric charge corresponding to a data signal, the data signal is transmitted to a pixel P1mk. The operation of the conventional OLED device having the demultiplexer 32 includes supplying the data signal from the demultiplexer 32 to the data line Dmk and transmitting the supplied data signal to the pixel P1mk enabled by supplying a scan signal for a first horizontal period.

**[0021]** However, because this OLED device should supply the data signal to the k data lines D1-Dk and supply the scan signal to the pixel portion 10 for the first horizontal period, a time required for supplying and transmitting the data signal is not enough. When the data signal is supplied for an insufficient time, the capacitor of the data line Dmk is not fully charged with an electric charge corresponding to the data signal but has the electric charge in common with a storage capacitor of the pixel P1mk. Also, since there is not enough time to transmit the stored data signal to the pixel P1mk, electric

charge corresponding to the data signal is not sent to the pixel P1mk. As a result, the OLED device does not emit light with brightness corresponding to the supplied data signal, and thus the image quality is poor.

**[0022]** US6366026 discloses a passive type EL display apparatus having a matrix structure. Column electrodes are provided and include first column electrodes corresponding to pixels and odd rows and second column electrodes to pixels and even rows. It is disclosed that the first and second column electrodes are driven simultaneously.

**[0023]** US 2005/0024297 discloses an organic electroluminescent display and driving method. The organic electroluminescent display includes a demultiplexer for outputting signals provided by a data driver to a plurality of data lines according to on/off operation of analog switches.

**[0024]** US 2006/0097965 discloses an active matrix electroluminescent display in which each pixel has a first amorphous silicon drive transistor for intermittently driving a current through the display element and a second amorphous silicon drive transistor for intermittently driving a current through the display element.

**[0025]** WO 2005/116968 relates to a display drive apparatus that includes a selection circuit, a gradation signal generation circuit, a plurality of signal distribution circuits and a plurality of current holding circuits.

**[0026]** The present invention provides an organic light emitting diode (OLED) display device and a method of operating the same in which a data signal is supplied to a data line for the previous scan period and transmitted to a pixel for the present scan period, with the result that time taken to supply and transmit the data signal is sufficient.

**[0027]** According to a first aspect of the invention there is provided an organic light emitting diode display device as set out in Claim 1. Preferred features of this aspect are set out in Claims 2-13.

**[0028]** According to a second aspect of the invention there is provided a method of operating a OLED device as set out in Claim 14. Preferred features of this aspect are set out in Claims 15-18.

**[0029]** The above and other features of the present invention will be described in reference to certain exemplary embodiment thereof with reference to the attached drawings in which:

FIG. 1 is a schematic diagram of a conventional organic light emitting diode (OLED) display device;

FIG. 2 is a schematic diagram of a data driver of the conventional OLED device;

FIG. 3 is a schematic diagram of an OLED device according to an exemplary embodiment of the present invention;

FIG. 4 is a timing diagram illustrating the operation of the OLED device shown in FIG. 3;

FIG. 5 is a circuit diagram of a pixel of the OLED device shown in FIG. 4; and

FIG. 6 is a timing diagram illustrating the operation of the pixel circuit of the OLED device shown in FIG. 4.

**[0030]** Embodiments will now be described more fully hereinafter with reference to the accompanying drawings, in which exemplary embodiments of the invention are shown.

**[0031]** FIG. 3 is a schematic diagram of an organic light emitting diode (OLED) display device according to an exemplary embodiment of the present invention.

**[0032]** Referring to FIG. 3, the OLED device according to the embodiment of the of FIG. 3 includes a pixel portion 100, a scan driver 200, an emission driver 300, a data driver 400, a demultiplexer unit 500, a data line selector 600, and a timing controller 700.

**[0033]** The scan driver 200 sequentially supplies scan signals to a plurality of scan lines S1-S2n synchronously with scan control signals Sg (i.e., a start pulse and clock signals) supplied from the timing controller 700.

**[0034]** The emission driver 300 may include shift registers, which output emission control signals synchronously with control signals (i.e., the start pulse and clock signals) supplied from the timing controller 700. Also, the OLED device may not additionally include the emission driver 300. That is, even if the OLED device does not include the emission driver 300, emission control signals can be generated by performing a logic operation on output signals or scan signals of shift registers output from the scan driver 200.

**[0035]** The data driver 400 receives red (R), green (G), and blue (B) data and control signals Dg (i.e., the start pulse and clock signals) from the timing controller 700. The data driver 400 includes a plurality of data driving circuits 450, which supply data signals to data output lines DL1-DLm, respectively, and each of the data driving circuits 450 receives the R, G, and B data and the control signals Dg from the timing controller 700.

**[0036]** Each of the data driving circuits 450 includes a shift register, a sampling latch, a holding latch, and a digital/analog (D/A) converter. The shift register transmits sequentially-supplied data to each sampling latch in bit units in response to the control signal Dg. The sampling latch receives 1-bit data from the shift register and samples the data. The holding latch holds the sampled data, and the D/A converter converts the stored data into an analog value. Also, the data driving circuit 450 may further include a level shifter, which raises the output signal of the holding latch and supplies the output signal to the D/A converter.

**[0037]** The number of data supplied to each of the data driving circuits 450 corresponds to the number of data lines D1-Dk connected to one demultiplexer 550. Accordingly, when each of the data driving circuits 450 is connected to the demultiplexer 550, which supplies the data signals to the data lines D1, D2, and D3, it receives three data for one horizontal period.

**[0038]** This data driving circuit 450 samples the re-

ceived R, G, and B data, converts the sampled data into an analog data signal, and supplies the data signal to the data output line DLm.

**[0039]** The demultiplexer unit 500 receives the data signals from the data output lines DL1-DLm and supplies the data signals to the data lines D1-Dmk in response to demultiplexer control signals MC1, MC2, ..., and MCK. The demultiplexer unit 500 includes a plurality of demultiplexers 550 that are connected to the data output lines DL1-DLm from the respective data driving circuits 450 and receive the data signals therefrom.

**[0040]** Each of the demultiplexers 550 receives the data signal from the data output line DL1-DLm from one data driving circuit 450 and supplies the data signal to the respective data lines D1, D2, ..., and Dk in response to the control signals MC1, MC2, ..., and MCK supplied from the timing controller 700.

**[0041]** When each of the demultiplexers 550 receives three data signals for one horizontal period, it includes three transistors M1, M2, and M3, which are connected to three (k=3) data lines D1, D2, and D3, respectively.

**[0042]** The transistor M1 is turned on in response to the control signal MC1 supplied from the timing controller 700 and supplies the data signal from the data output line DL1 to the corresponding data line D1. Also, the transistors M2 and M3 perform similar operations as the transistor M1. The operations of the transistors M1, M2, and M3 are sequentially performed, and detailed descriptions thereof will be described later.

**[0043]** The transistors M1, M2, and M3 are p-type metal oxide semiconductor field effect transistors (MOSFETs). Accordingly, the transistors M1, M2, and M3 of the demultiplexer unit 500 can be produced by the same process as transistors of a pixel circuit formed in the pixel portion 100. The demultiplexer unit 500 is formed on the same substrate as the pixel portion 100, thereby realizing a system on panel (SOP) device. Other embodiments may use various other switching devices, such as n-type transistors.

**[0044]** The pixel portion 100 includes a plurality of pixels P11-P2nmk, which are formed in regions defined by a plurality of scan lines S1-S2n, a plurality of emission control lines E1-E2n, and a plurality of data lines D1-Dmk. Each of the pixels P11-P2nmk includes R, G, and B sub-pixels and receives a data signal from the data driving circuit 300.

**[0045]** The R, G, and B sub-pixels of the pixel P2nmk each have the same pixel circuit construction. The R, G, and B sub-pixels emit R, G, and B light corresponding to current supplied to an organic light emitting diode. Accordingly, the pixel P2nmk combines the light emitted by the R, G, and B sub-pixels and displays a specific color.

**[0046]** In the pixel portion 100, two sub data lines D1a and D1b are formed across respective pixel columns P11-P2n1. The two sub data lines D1a and D1b receive one data signal from the demultiplexer 550 and selectively supplies the data signal to the pixel columns P11-P2n1. The first sub data line D1a is connected to pixels

P11, P31, PS1, ..., and P2n-11 of (2n-1)th rows (odd rows) among pixels arranged in the pixel columns P11-P2n1 and supplies the data signals to the respective pixels P11, P31, P51, ..., and P2n-11. The second sub data line D1b is connected to pixels P21, P41, ..., and P2n of 2n-th rows (even rows) among the pixels arranged in the pixel columns P11-P2n1 and supplies the data signals to the respective pixels P21, P41, ..., and P2n.

**[0047]** Since the above-described data lines D1a-Dmkb are formed across the pixel portion 100, they have capacitance. The capacitance caused by the data lines D1a-Dmkb leads to a loading effect when the data signal is applied from the data driver 400. That is, a delay in transmitting signals occurs due to undesired impedance elements. This capacitance is generated by a parasitic capacitor, which is equivalently induced by conductive layers or metal interconnections opposite insulating layers that are formed on or near the data lines Dmkb and the pixels P1mk-P2nmk. Accordingly, the OLED device having the demultiplexers 550 needs sufficient time to supply the data signal to the parasitic capacitor of the data line Dmkb.

**[0048]** As described above, the OLED device having the double sub data lines D1a and D1b includes the data line selector 600, which is disposed between the demultiplexer unit 500 and the pixel portion 100 and selectively supplies the data signal to the two sub data lines D1a and D1b.

**[0049]** The data line selector 600 includes two transistors M1a and M1b, which are commonly connected to the transistor M1 of the demultiplexer 550 and respectively connected to the two sub data lines D1a and D1b of the pixel columns P11-P2n1 that receive the data signal from the transistor M1 of the demultiplexer 550.

**[0050]** The first transistor M1a, which is connected to the first sub data line D1a, is turned on in response to a control signal DCa output from the timing controller 700 and transmits the data signal from the transistor M1 of the demultiplexer 550 to the first sub data line D1a.

**[0051]** The second transistor M1b, which is connected to the second sub data line D1b, is turned on in response to a control signal DCb output from the timing controller 700 and transmits the data signal from the transistor M1 of the demultiplexer 550 to the second sub data line D1b.

**[0052]** The first and second transistors M1a and M1b are alternately turned on and off, and the first and second sub data lines D1a and D1b selectively receive the data signal.

**[0053]** The above-described first and second transistors M1a and M1b of the data line selector 600 are p-type MOSFETs. Thus, the transistors M1a and M1b of the data line selector 600 can be produced by the same process as the transistors of the pixel portion 100. The data line selector 600 and the pixel portion 100 are formed on one substrate at the same time, thereby realizing the SOP type. In some embodiments, the first and second transistors M1a and M1b are other types of switches, such as n-type transistors.

**[0054]** The operation of the OLED device shown in FIG. 3 will now be described with reference to FIG. 4.

**[0055]** FIG. 4 is a timing diagram illustrating the operation of the OLED device shown in FIG. 3.

**[0056]** Hereinafter, the first demultiplexer 550 receiving data signals from the first data driving circuit 450 and the k pixels P11-P1k receiving the data signals from the first demultiplexer 550 will be described. Also, it will be assumed that one demultiplexer 550 supplies the data signal to three pixel columns P11-P1k (k=3) and includes three transistors M1, M2, and M3.

**[0057]** When the scan driver 200 supplies a low-level first scan signal, a first-row first-column pixel (P11) data signal stored in the first sub data line D1a of a first column is transmitted to an enabled first-row first-column pixel P11. Also, a first-row second column pixel (P12) data signal stored in a first sub data line D2a of a second column is transmitted to an enabled first-row second-column pixel P12, and a first-row third-column pixel (P13) data signal stored in a first sub data line D3a of a third column is transmitted to a first-row third-column pixel P13.

**[0058]** During the supply of the low-level first scan signal, three second transistors M1b, M2b, and M3b of the data line selector 600, which are connected to second sub data lines D1b-D3b of the first through third columns, respectively, receive a low-level control signal DCb from the timing controller 700 and, in response, turn on.

**[0059]** While the second transistors M1b, M2b, and M3b of the data line selector 600 are on, the first data driving circuit 450 transmits a second-row first-column pixel (P21) data signal through the data output line DL1 to the demultiplexer 550. The transistor M1 of the demultiplexer 550, which is connected to the data line D1 of the pixels P11-P2n1 of the first row, is turned on in response to the control signal MC1 output from the timing controller 700 and outputs the second-row first-column pixel (P21) data signal. The second-row first-column pixel (P21) data signal is supplied through the turned-on second transistor M1b of the data line selector 600 to the second sub data line D1b.

**[0060]** Next, when the first data driving circuit 450 transmits a second-row second-column pixel P22 data signal through the data output line DL1 to the demultiplexer 550, the transistor M2 of the demultiplexer 550, which is connected to the data line D2 of pixels P12-P2n2 of the second row, receives the control signal MC2 from the timing controller 700 and then is turned on. Accordingly, a second sub data line D2b of the pixels P12-P2n2 of the second row receives a second-row second-column pixel (P22) data signal through the transistor M2 of the demultiplexer 550 and the second transistor M2b of the data line selector 600.

**[0061]** Finally, when the first data driving circuit 450 transmits a second-row third-column pixel (P23) data signal through the data output line DL1 to the demultiplexer 550, the transistor M3 of the demultiplexer 550, which is connected to the data line D3 of pixels P13-P2n3 of the

third column, receives the control signal MC3 from the timing controller 700 and turns on. Accordingly, the second sub data line D2b of the pixels P13-P2n3 of the third column receives a second-row third-column pixel (P23) data signal through the transistor M3 of the demultiplexer 550 and the second transistor M3b of the data line selector 600.

**[0062]** As described above, during the supply of the low-level first scan signal, the second transistors M1b, M2b, and M3b of the data line selector 600 are turned on, and each of the demultiplexers 550 sequentially turns on a transistors M1-Mk. Accordingly, the data signals of the pixels P21-P2k of the second row are supplied to the second sub data lines D1b-Dkb through the turned-on second transistors M1b, M2b, and M3b, respectively.

**[0063]** As explained above, the operation of sequentially supplying data signals of k pixels P11-P1k is performed by an m number of data driving circuits 450 at the same time. Also, the operation of outputting the data signals by sequentially turning on k transistors M1-Mk is performed by an m number of demultiplexers 550 at the same time. Accordingly, transistors M1, Mk+1, ..., M(m-1)k+1, which operate symmetrically in the m number of demultiplexers 550, receive the same control signal MC1 from the timing controller 700 and turn on at the same time. The operation of turning on the second transistor M1b of the data line selector 600 during the supply of the first scan signal is performed in an m x k number of second transistors M1b, M2b, M3b,... at the same time. Accordingly, the m x k second transistors M1b, M2b, M3b,..., which operate symmetrically, receive the same control signal DCb from the timing controller 700 and turn on at the same time. The control signal DCb is active for the same amount of time as the scan signal and remains at a low level while the low-level first scan signal is being supplied. Therefore, the control signal DCb can be obtained by performing a logic operation on output signals of the scan driver 200.

**[0064]** Once the scan driver 200 supplies a low-level second scan signal to the pixel portion 100, the pixels P21-P2k of the second row are enabled. Thus, the second-row first-column (P21) data signal, which is stored in the second sub data line D1b of a first column, is transmitted to the enabled second-row first-column pixel P21. Also, the second-row second-column (P22) data signal, which is stored in the second sub data line D2b of a second column, is transmitted to the enabled second-row second-column pixel P22, and the second-row third-column (P23) data signal, which is stored in the second sub data line D3b of a third column, is transmitted to the enabled second-row third-column pixel P23.

**[0065]** Accordingly, a sufficient electric charge is shared between a parasitic capacitor of each sub data line and a storage capacitor of each pixel for a scan period having an active duration of one horizontal period, so that the storage capacitor of the pixel is charged with an electric charge corresponding to the data signal.

**[0066]** During the supply of the low-level second scan

signal, the first transistors M1a, M2a, and M3a of the three data line selector 600, which are connected to the first sub data lines D1a-D3a of the first through third columns, respectively, receive a low-level control signal DCa from the timing controller 700 and then turn on at the same time.

**[0067]** While the first transistors M1a, M2a, and M3a of the data line selector 600 are turned on, the first data driving circuit 450 sequentially generates a third-row first-column pixel (P31) data signal, a third-row second-column pixel (P32) data signal, and a third-row third-column pixel (P33) data signal. The three data signals are transmitted to the data line selector 600 through the three transistors M1, M2, and M3, which are sequentially turned on in response to the control signals MC1, MC2, and MC3 of the timing controller 700. Also, the three data signals are supplied to the three first sub data lines D1a, D2a, and D3a, respectively, through the turned-on first transistors M1a, M2a, and M3a of the data line selector 600.

**[0068]** As described above, during the supply of the low-level second scan signal, the k first transistors M1a, M2a, M3a, ... of the data line selector 600 are turned on, and each of the demultiplexers 550 sequentially turns on the transistors M1-Mk. Thus, data signals of pixels P31-P3k of the third row are supplied to the first sub data lines D1a, D2a, and D3a, respectively, through the turned-on transistors M1a, M2a, M3a,...

**[0069]** As explained above, the operation of sequentially supplying the data signals of the k pixels P11-P1k is performed by the m data driving circuits 450. Also, the operation of outputting the data signals by sequentially turning on the k transistors M1-Mk is performed by the m demultiplexers 550. Accordingly, the transistors M1, Mk+1, ..., M(m-1)k+1, which operate symmetrically in the m demultiplexers 550, receive the same control signal MC1 from the timing controller 700 and turn on at the same time. The operation of turning on the first transistor M1a of the data line selector 600 during the supply of the first scan signal is performed in the m x k first transistors M1a, M2a, M3a,... at the same time. Accordingly, the m x k first transistors M1a, M2a, M3a,..., which operate symmetrically, receive the same control signal DCa from the timing controller 700 and turn on at the same time. The control signal DCa has the same amount of active time as the scan signal and remains at a low level during the supply of the low-level second scan signal. Therefore, the control signal DCa can be obtained by performing a logic operation on output signals of the scan driver 200.

**[0070]** The above-described operations are repeatedly continued until a 2n-th scan signal is supplied and an electric charge is shared by pixels P2n1-P2nmk arranged in a 2n-th row.

**[0071]** Therefore, when a low-level (2n-1)th (n is an odd number) scan signal is supplied, the second transistor M1b of the data line selector 600 turns on and supplies a 2n-row pixel (P2n1) data signal to the second sub data line D1b. Also, when a low-level 2n-th (n is an even

number) scan signal is supplied, the first transistor M1a of the data line selector 600 turns on and supplies a (2n+1)-row pixel (P2n+1) data signal to the first sub data line D1a.

**[0072]** In the above-described operations, a data signal is supplied to a data line for the previous scan period and an electric charge is shared between an enabled pixel and the data line for the present scan period. Thus, sufficient time to supply the data signal and share the electric charge can be ensured.

**[0073]** FIG. 5 is a circuit diagram of two pixels of the OLED device shown in FIG. 3.

**[0074]** For brevity of explanation, only a pixel P2nmk that receives a 2n-th scan signal and a 2n-th emission control signal and also receives a data signal from an mk-th data line will be described with reference to FIG. 5.

**[0075]** Referring to FIG. 5, the pixel P2nmk of the OLED device includes transistors M21, M22, and M23, a storage capacitor Cst2, and an organic light emitting diode OLED2.

**[0076]** The driving transistor M21 is a transistor for controlling a driving current supplied to the organic light emitting diode OLED2. The driving transistor M21 has a source electrode connected to a power supply voltage VDD, and a drain electrode connected to a source electrode of the emission control transistor M23.

**[0077]** The emission control transistor M23 is a transistor for enabling or blocking the flow of current into the organic light emitting diode OLED2. The emission control transistor M23 has the source electrode connected to the drain electrode of the driving transistor M21, and a drain electrode connected to an anode electrode of the organic light emitting diode OLED2.

**[0078]** The organic light emitting diode OLED2 has a cathode electrode connected to a power supply voltage VSS, and the anode electrode connected to the drain electrode of the emission control transistor M23. The organic light emitting diode OLED2 emits light corresponding to the amount of driving current supplied from the driving transistor M21.

**[0079]** The switching transistor M22 transmits a data signal Vdata applied to the second sub data line Dmkb to one electrode of the storage capacitor Cst2 in response to a scan signal applied from the scan line S2n.

**[0080]** The storage capacitor Cst2 has one electrode connected to a gate electrode of the driving transistor M21, and the other electrode connected to the power supply voltage VDD.

**[0081]** Hereinafter, the operations of the pixel circuit shown in FIG. 5 will be described with reference to FIG. 6.

**[0082]** FIG. 6 is a timing diagram illustrating the operation of the pixel circuit of the OLED device shown in FIG. 4.

**[0083]** Once the scan driver 200 supplies a low-level (2n-1)th scan signal, the second transistor Mmkb of the data line selector 600 turns on and supplies a 2n-row mk-column pixel (P2nmk) data signal to the second sub data line Dmkb. The second sub data line Dmkb has a capac-

itor Cdata2, which is formed between the second sub data line Dmkb and nearby metal interconnections Accordingly, the capacitor Cdata2 in the second sub data line Dmkb is charged with an electric charge corresponding to the 2n-row mk-column pixel (P2nmk) data signal. However, since the switching transistor M22 of the pixel P2nmk is turned off, no electric charge is shared between the storage capacitor Cst2 of the pixel P2nmk and the capacitor Cdata2 in the second sub data line Dmkb.

**[0084]** Next, once the scan driver 200 supplies a low-level 2n-th scan signal, the pixel P2nmk is enabled. Thus, the switching transistor M22 is turned on, so that the storage capacitor Cst2 of the pixel P2nmk and the capacitor Cdata2 in the second sub data line Dmkb are connected to each other by the switching transistor M22 and have an electric charge in common. Thus, the storage capacitor Cst2 is charged with an electric charge corresponding to a difference between the power supply voltage VDD and the data voltage Vdata. Subsequently, once a low-level emission control signal is applied to the emission control transistor M23, the emission control transistor M23 is turned on, and thus the driving transistor M21 is connected to the organic light emitting diode OLED2. Accordingly, current corresponding to the electric charge stored in the storage capacitor Cst2 flows from the drain electrode of the driving transistor M21 to the anode electrode of the organic light emitting diode OLED2, so that the organic light emitting diode OLED2 emits light.

**[0085]** As described above, a data signal is supplied and an electric charge is shared between the capacitor Cdata2 of the data line and the storage capacitor Cst2 of the pixel P2nmk for a sufficient time that the organic light emitting diode display device can emit light with a luminance corresponding to the data signal. Although it is described that the pixel circuit includes only the three transistors M21, M22, and M23 and one capacitor Cst2, the present invention is not limited thereto, but other embodiments of the pixel circuit can be used.

**[0086]** As described above, the OLED device having demultiplexers includes two data lines in each pixel column. Thus, a data signal is supplied for the previous scan period and transmitted to a corresponding pixel for the present scan period. As a result, time taken to supply and transmit the data signal is sufficient, so that the OLED device can emit light with a luminance corresponding to the supplied data signal.

**[0087]** Although certain embodiments have been described, it will be understood by those skilled in the art that a variety of modifications and variations may be made without departing from the scope of the present invention.

## Claims

1. An organic light emitting diode (OLED) display device comprising:

an array of pixels ( $P_{11} - P_{2nmk}$ ), the array arranged in rows and columns;

a plurality of scan lines connected to rows of pixels;

a plurality of data lines, wherein for each column of pixels there is a first data line connected to pixel arranged in only odd rows of the column and a second data line connected to pixels arranged in only even rows of the column;

a scan driver (200) configured to sequentially supply a scan signal to each of the rows; and a data driver (400) for supplying data signals for the data lines, wherein the display device is arranged to alternatively transmit data signals via the first and second data lines, wherein the data line connected to the pixel of a next row is configured to store the data signal during the time when the scan driver supplies the scan signal to the current row, and to provide the data signal to the pixel of the next row during a time when the scan driver supplies a scan signal to the next row.

2. An OLED device according to claim 1, further comprising a demultiplexer configured to receive the data signals from the data driver and to supply the data signals to one of the plurality of the data lines.

3. An OLED device according to claim 1 or 2, wherein the pixel of the next row is configured to store the data signal, and to provide a current to a light emitting diode, the current being generated based on the data signal.

4. An OLED device according to any of claims 1 to 3, wherein each of the first data lines and the second data line are connected to at least one capacitor.

5. An OLED device according to any of claims 2 to 4, wherein the demultiplexer and the array of pixels are formed on the same substrate.

6. An organic light emitting diode (OLED) display device according to any one of Claims 1 to 5 wherein the array of pixels form at least part of a pixel portion (100) for displaying an image, the OLED further comprising:

a scan driver (200) for supplying a scan signal to the pixel portion;

an emission driver (300) for supplying an emission control signal to the pixel portion (100); and a demultiplexer for receiving the data signal from the data driver and for supplying the data signal to at least two columns of the pixel portion, and wherein the pixel portion (100) is configured to receive the data signals from the demultiplexer and to supply alternately the data signal

- through the first data lines and the second data lines.
7. An OLED device according to claim 6, wherein the demultiplexer includes at least two transistors, which are configured to be sequentially turned on and to supply the data signal to the at least two column of the pixel portion.
  8. An OLED device according to claim 6 or 7, further comprising :
    - a plurality of emission control lines for transmitting the emission control signal to pixels arranged in the rows.
  9. An OLED device according to claim 8, wherein the first data lines are disposed on one side of pixels arranged in the columns; and the second data lines are disposed on the other side of the pixels arranged in the columns.
  10. An OLED device according to claim 8 or 9, further comprising first and second transistors disposed between the demultiplexer and the first and second data lines, the first and second transistors configured to receive the data signal from the demultiplexer and to alternately supply the data signal to the first and second data lines.
  11. An OLED device according to claim 10, wherein the first transistors are connected to the first data lines and are configured to be turned on when the scan driver supplies the scan signal to the pixels arranged in the even rows, and to supply the data signal to the first data lines, and the second transistors are connected to the second data lines and are configured to be turned on when the scan driver supplies the scan signal to the pixels arranged in the odd rows, and to supply the data signal to the second data lines.
  12. An OLED device according to claim 11, wherein the transistors of the demultiplexer and the first and second transistors connected to the first and second data lines are PMOS transistors.
  13. An OLED device according to any of claims 10 to 12, wherein the demultiplexer, the first and second transistors connected to the first and second data lines, and the pixel portion are formed on the same substrate.
  14. A method of operating an OLED device having a demultiplexer, the method comprising:
    - during a previous scan period, supplying a data signal from the demultiplexer either to a first data line connected to pixels arranged in only odd rows, or to a second data line connected to pixels arranged in only even rows, wherein the data lines are connected to a same single column of pixels; and
    - during a current scan period, transmitting the supplied data signal from the first or second data line to a pixel.
  15. A method according to claim 14, wherein supplying the data signal comprises sequentially outputting data signals for at least two pixels by sequentially turning on at least two transistors of the demultiplexer.
  16. A method according to claim 15, wherein supplying the data signal from the demultiplexer either to the first data line or to the second data line comprises either selectively turning on a first transistor disposed between the demultiplexer and the first data line or a second transistor disposed between the demultiplexer and the second data line.
  17. A method according to claim 16, wherein supplying the data signal from the demultiplexer either to the first data line or to the second data line further comprises turning on a transistor of a pixel so as to transmit the data signal to the pixel.
  18. A method according to claim 17, wherein the transistors of the demultiplexer and the first and second transistors connected to the first and second data lines are PMOS transistors.

#### Patentansprüche

1. Organische, Licht emittierende Diodenanzeige (OLED-Anzeige), aufweisend:
  - eine in Zeilen und Spalten gegliederte Pixelanordnung ( $P_{11} - P_{2nmk}$ );
  - eine Vielzahl von mit Zeilen von Pixeln verbundenen Abtastleitungen;
  - eine Vielzahl von Datenleitungen, wobei für jede Spalte von Pixeln eine erste Datenleitung mit Pixeln verbunden ist, die nur in ungeraden Zeilen der Spalte angeordnet sind, und eine zweite Datenleitung mit Pixeln verbunden ist, die nur in geraden Zeilen der Spalte angeordnet sind;
  - einen Abtastreiber (200), der für die sequentielle Versorgung der einzelnen Zeilen mit einem Abtastsignal konfiguriert ist; und
  - einen Datentreiber (400) zur Lieferung von Datensignalen für die Datenleitungen, **dadurch gekennzeichnet, dass** das Anzeigegerät für die wechselweise Übertragung von Datensignalen über die erste und zweite Datenleitung eingerichtet ist, und dadurch, dass die mit dem Pixel einer nächsten Zeile verbundene Datenlei-

- tung für das Speichern des Datensignals in der Zeit, in der der Abtasttreiber das Abtastsignal an die aktuelle Zeile liefert, und zur Lieferung des Datensignals an das Pixel der nächsten Zeile in der Zeit, in der der Abtasttreiber ein Abtastsignal an die nächste Zeile liefert, konfiguriert ist.
2. OLED-Gerät nach Anspruch 1, das weiterhin einen Demultiplexer aufweist, der für das Empfangen der Datensignale vom Datentreiber und die Lieferung von Datensignalen an eine der Vielzahl von Datenleitungen konfiguriert ist.
  3. OLED-Gerät nach Anspruch 1 oder 2, **dadurch gekennzeichnet, dass** das Pixel der nächsten Zeile für das Speichern des Datensignals und für die Lieferung eines Stroms an die Licht emittierende Diode konfiguriert ist, wobei der Strom auf der Grundlage des Datensignals erzeugt wird.
  4. OLED-Gerät nach einem der Ansprüche 1 bis 3, **dadurch gekennzeichnet, dass** jede der ersten Datenleitungen und die zweite Datenleitung mit mindestens einem Kondensator verbunden ist.
  5. OLED-Gerät nach einem der Ansprüche 2 bis 4, **dadurch gekennzeichnet, dass** der Demultiplexer und die Pixelanordnung auf dem gleichen Träger ausgebildet sind.
  6. Anzeigegerät mit organischen, Licht emittierenden Dioden (OLED-Anzeigegerät) nach einem der Ansprüche 1 bis 5, **dadurch gekennzeichnet, dass** die Pixelanordnung zumindest einen Teil eines Pixelbereichs (100) zur Anzeige des Bildes bildet, wobei die OLED weiterhin:
    - einen Abtasttreiber (200) zur Lieferung eines Abtastsignals an den Pixelbereich;
    - einen Emissionstreiber (300) zur Lieferung eines Emissionssteuersignals an den Pixelbereich (100);
    - einen Demultiplexer zum Empfang des Datensignals vom Datentreiber und zur Lieferung des Datensignals an mindestens zwei Spalten des Pixelbereichs;
    - umfasst und **dadurch gekennzeichnet ist, dass** der Pixelbereich (100) für den Empfang des Datensignals vom Demultiplexer und die wechselseitige Lieferung des Datensignals über die ersten und zweiten Datenleitungen konfiguriert ist.
  7. OLED-Gerät nach Anspruch 6, **dadurch gekennzeichnet, dass** der Demultiplexer mindestens zwei Transistoren umfasst, die so ausgeführt sind, dass sie gestaffelt eingeschaltet werden und das Datensignal an die mindestens zwei Spalten des Pixelbereichs liefern.
  8. OLED-Gerät nach Anspruch 6 oder 7, weiterhin aufweisend:
    - eine Vielzahl von Emissionssteuerleitungen zur Übertragung des Emissionssteuersignals an in den Zeilen angeordnete Pixel.
  9. OLED-Gerät nach Anspruch 8, **dadurch gekennzeichnet, dass** die ersten Datenleitungen auf einer Seite der in den Spalten angeordneten Pixel angeordnet sind; und die zweiten Datenleitungen auf der anderen Seite der in den Spalten angeordneten Pixel angeordnet sind.
  10. OLED-Gerät nach Anspruch 8 oder 9, das weiterhin erste und zweite Transistoren aufweist, die zwischen Demultiplexer und den ersten und zweiten Datenleitungen angeordnet und für den Empfang des Datensignals vom Demultiplexer und die wechselseitige Lieferung des Signals an die ersten und zweiten Datenleitungen konfiguriert sind.
  11. OLED-Gerät nach Anspruch 10, **dadurch gekennzeichnet, dass** die ersten Transistoren mit den ersten Datenleitungen verbunden und so ausgeführt sind, dass sie eingeschaltet werden, wenn der Abtasttreiber das Abtastsignal an die in geraden Zeilen angeordneten Pixel liefert, und das Datensignal an die ersten Datenleitungen liefern, und dass die zweiten Transistoren mit den zweiten Datenleitungen verbunden und so ausgeführt sind, dass sie eingeschaltet werden, wenn der Abtasttreiber das Abtastsignal an die in ungeraden Zeilen angeordneten Pixel liefert, und das Datensignal an die zweiten Datenleitungen liefern.
  12. OLED-Gerät nach Anspruch 11, **dadurch gekennzeichnet, dass** die Transistoren des Demultiplexers und die ersten und zweiten Transistoren, die mit den ersten und zweiten Datenleitungen verbunden sind, PMOS-Transistoren sind.
  13. OLED-Gerät nach einem der Ansprüche 10 bis 12, **dadurch gekennzeichnet, dass** der Demultiplexer, die ersten und zweiten Datenleitungen und der Pixelbereich auf dem gleichen Träger ausgebildet sind.
  14. Verfahren zum Betreiben eines OLED-Geräts mit einem Demultiplexer, das folgende Schritte aufweist:
    - während einer vorherigen Abtastperiode wird ein Datensignal vom Demultiplexer entweder an eine erste Datenleitung, die nur mit in ungeraden Zeilen angeordneten Pixeln verbunden ist, oder

an eine zweite Datenleitung, die nur mit in geraden Zeilen angeordneten Pixeln verbunden ist, geliefert; und während einer laufenden Abtastperiode wird das gelieferte Datensignal von der ersten oder zweiten Datenleitung an ein Pixel geliefert.

15. Verfahren nach Anspruch 14, bei dem die Lieferung des Datensignals die sequentielle Ausgabe von Datensignalen für mindestens zwei Pixel durch gestaffeltes Einschalten von mindestens zwei Transistoren des Demultiplexers umfasst.
16. Verfahren nach Anspruch 15, bei dem die Lieferung des Datensignals vom Demultiplexer entweder an die erste Datenleitung oder an die zweite Datenleitung entweder das selektive Einschalten eines ersten, zwischen Demultiplexer und der ersten Datenleitung angeordneten Transistors oder eines zweiten, zwischen Demultiplexer und der zweiten Datenleitung angeordneten Transistors umfasst.
17. Verfahren nach Anspruch 16, bei dem die Lieferung des Datensignals vom Demultiplexer entweder an die erste Datenleitung oder an die zweite Datenleitung weiterhin das Einschalten eines Transistors eines Pixels umfasst, um das Datensignal an das Pixel zu übertragen.
18. Verfahren nach Anspruch 17, **dadurch gekennzeichnet, dass** die Transistoren des Demultiplexers und die ersten und zweiten Transistoren, die mit den ersten und zweiten Datenleitungen verbunden sind, PMOS-Transistoren sind.

## Revendications

1. Dispositif d'affichage à diodes électroluminescentes organiques (OLED), comprenant :
- une matrice de pixels ( $P_{11} - P_{2nmk}$ ), la matrice étant agencée en rangées et en colonnes ;
  - une pluralité de lignes de balayage connectées à des rangées de pixels ;
  - une pluralité de lignes de données, dans laquelle, pour chaque colonne de pixels, il existe une première ligne de données connectée à des pixels agencés uniquement dans des rangées impaires de la colonne, et une seconde ligne de données connectée à des pixels agencés uniquement dans des rangées paires de la colonne ;
  - un pilote de balayage (200) configuré de manière à fournir séquentiellement un signal de balayage à chacune des rangées ; et
  - un pilote de données (400) destiné à fournir des signaux de données pour les lignes de données,

dans lequel le dispositif d'affichage est agencé de manière à transmettre, en alternance, des signaux de données par l'intermédiaire des premières et secondes lignes de données, dans lequel la ligne de données connectée au pixel d'une rangée successive est configurée de manière à stocker le signal de données au cours de la période de temps où le pilote de balayage fournit le signal de balayage à la rangée en cours, et à fournir le signal de données au pixel de la rangée successive au cours d'une période de temps où le pilote de balayage fournit un signal de balayage à la rangée successive.

2. Dispositif d'affichage à diodes OLED selon la revendication 1, comprenant en outre un démultiplexeur configuré de manière à recevoir les signaux de données à partir du pilote de données et à fournir les signaux de données à l'une de la pluralité des lignes de données.
3. Dispositif d'affichage à diodes OLED selon la revendication 1 ou 2, dans lequel le pixel de la rangée successive est configuré de manière à stocker le signal de données, et à fournir un courant à une diode électroluminescente, le courant étant généré sur la base du signal de données.
4. Dispositif d'affichage à diodes OLED selon l'une quelconque des revendications 1 à 3, dans lequel les premières lignes de données et secondes lignes de données sont chacune connectées à au moins un condensateur.
5. Dispositif d'affichage à diodes OLED selon l'une quelconque des revendications 2 à 4, dans lequel le démultiplexeur et la matrice de pixels sont formés sur le même substrat.
6. Dispositif d'affichage à diodes électroluminescentes organiques (OLED) selon l'une quelconque des revendications 1 à 5, dans lequel la matrice de pixels forme au moins partiellement une partie de pixel (100) destinée à afficher une image, le dispositif d'affichage à diodes OLED comprenant en outre :
- un pilote de balayage (200) destiné à fournir un signal de balayage à la partie de pixel ;
  - un pilote d'émission (300) destiné à fournir un signal de commande d'émission à la partie de pixel (100) ; et
  - un démultiplexeur destiné à recevoir le signal de données en provenance du pilote de données et à fournir le signal de données à au moins deux colonnes de la partie de pixel ; et
  - dans lequel la partie de pixel (100) est configurée de manière à recevoir le signal de données en provenance du démultiplexeur et à fournir,

- en alternance, le signal de données à travers les premières lignes de données et les secondes lignes de données.
7. Dispositif d'affichage à diodes OLED selon la revendication 6, dans lequel le démultiplexeur inclut au moins deux transistors, lesquels sont configurés de manière à être mis sous tension séquentiellement et à fournir le signal de données auxdites au moins deux colonnes de la partie de pixel. 5
8. Dispositif d'affichage à diodes OLED selon la revendication 6 ou 7, comprenant en outre :
- une pluralité de lignes de commande d'émission lesquelles sont destinées à transmettre le signal de commande d'émission à des pixels agencés dans les rangées. 10 15
9. Dispositif d'affichage à diodes OLED selon la revendication 8, dans lequel les premières lignes de données sont agencées sur un côté des pixels agencés dans les colonnes ; et les secondes lignes de données sont agencées sur l'autre côté des pixels agencés dans les colonnes. 20 25
10. Dispositif d'affichage à diodes OLED selon la revendication 8 ou 9, comprenant en outre des premiers et seconds transistors agencés entre le démultiplexeur et les premières et secondes lignes de données, les premiers et seconds transistors étant configurés de manière à recevoir le signal de données provenant du démultiplexeur et à fournir en alternance le signal de données aux premières et secondes lignes de données. 30 35
11. Dispositif d'affichage à diodes OLED selon la revendication 10, dans lequel les premiers transistors sont connectés aux premières lignes de données et sont configurés de manière à être mis sous tension lorsque le pilote de balayage fournit le signal de balayage aux pixels agencés dans les rangées paires, et à fournir le signal de données aux premières lignes de données, et les seconds transistors sont connectés aux secondes lignes de données et sont configurés de manière à être mis sous tension lorsque le pilote de balayage fournit le signal de balayage aux pixels agencés dans les rangées impaires, et à fournir le signal de données aux secondes lignes de données. 40 45
12. Dispositif d'affichage à diodes OLED selon la revendication 11, dans lequel les transistors du démultiplexeur et les premiers et seconds transistors connectés aux premières et secondes lignes de données sont des transistors PMOS. 50 55
13. Dispositif d'affichage à diodes OLED selon l'une quelconque des revendications 10 à 12, dans lequel le démultiplexeur, les premiers et seconds transistors connectés aux premières et secondes lignes de données, et la partie de pixel, sont formés sur le même substrat.
14. Procédé d'exploitation d'un dispositif d'affichage à diodes OLED présentant un démultiplexeur, le procédé consistant à :
- au cours d'une période de balayage précédente, fournir un signal de données à partir du démultiplexeur, à une première ligne de données connectée à des pixels agencés uniquement dans des rangées impaires, ou à une seconde ligne de données connectée à des pixels agencés uniquement dans des rangées paires, dans lequel les lignes de données sont connectées à une même colonne unique de pixels ; et au cours d'une période de balayage en cours, transmettre le signal de données fourni, de la première ou seconde ligne de données à un pixel.
15. Procédé selon la revendication 14, dans lequel la fourniture du signal de données comprend générer en sortie, séquentiellement, des signaux de données pour au moins deux pixels, en mettant séquentiellement sous tension au moins deux transistors du démultiplexeur.
16. Procédé selon la revendication 15, dans lequel la fourniture du signal de données, du démultiplexeur à la première ligne de données ou à la seconde ligne de données, comprend la mise sous tension sélectivement d'un premier transistor disposé entre le démultiplexeur et la première ligne de données, ou d'un second transistor disposé entre le démultiplexeur et la seconde ligne de données.
17. Procédé selon la revendication 16, dans lequel la fourniture du signal de données, du démultiplexeur à la première ligne de données ou à la seconde ligne de données, comprend en outre la mise sous tension d'un transistor d'un pixel, de manière à transmettre le signal de données au pixel.
18. Procédé selon la revendication 17, dans lequel les transistors du démultiplexeur et les premiers et seconds transistors connectés aux premières et secondes lignes de données sont des transistors PMOS.

FIG. 1  
(PRIOR ART)

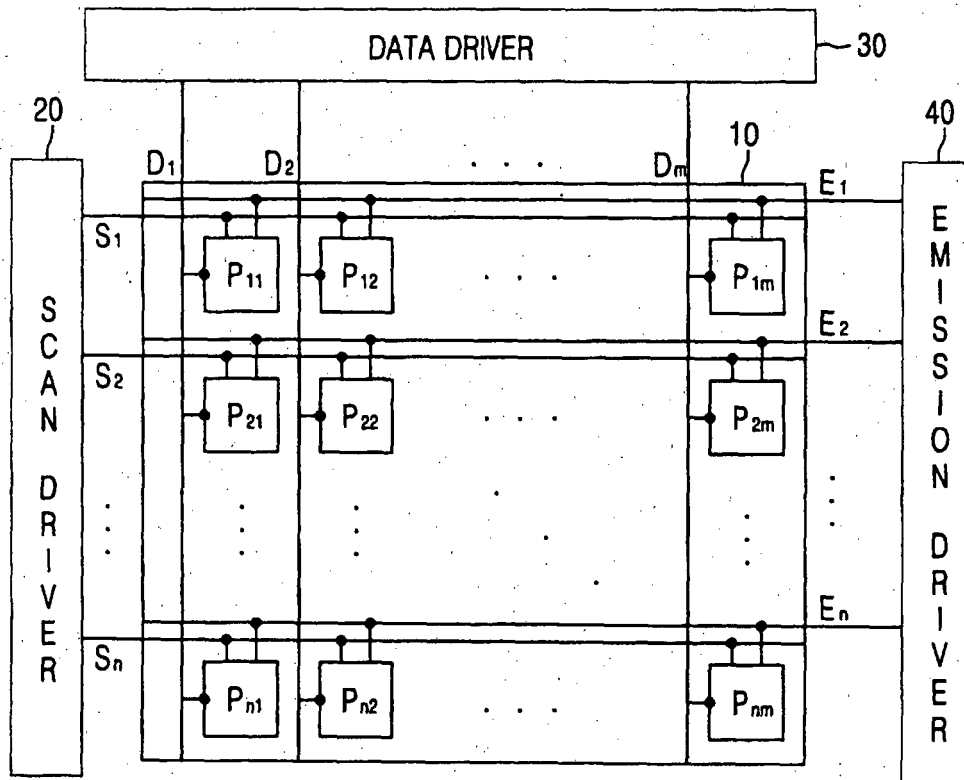


FIG. 2  
(PRIOR ART)

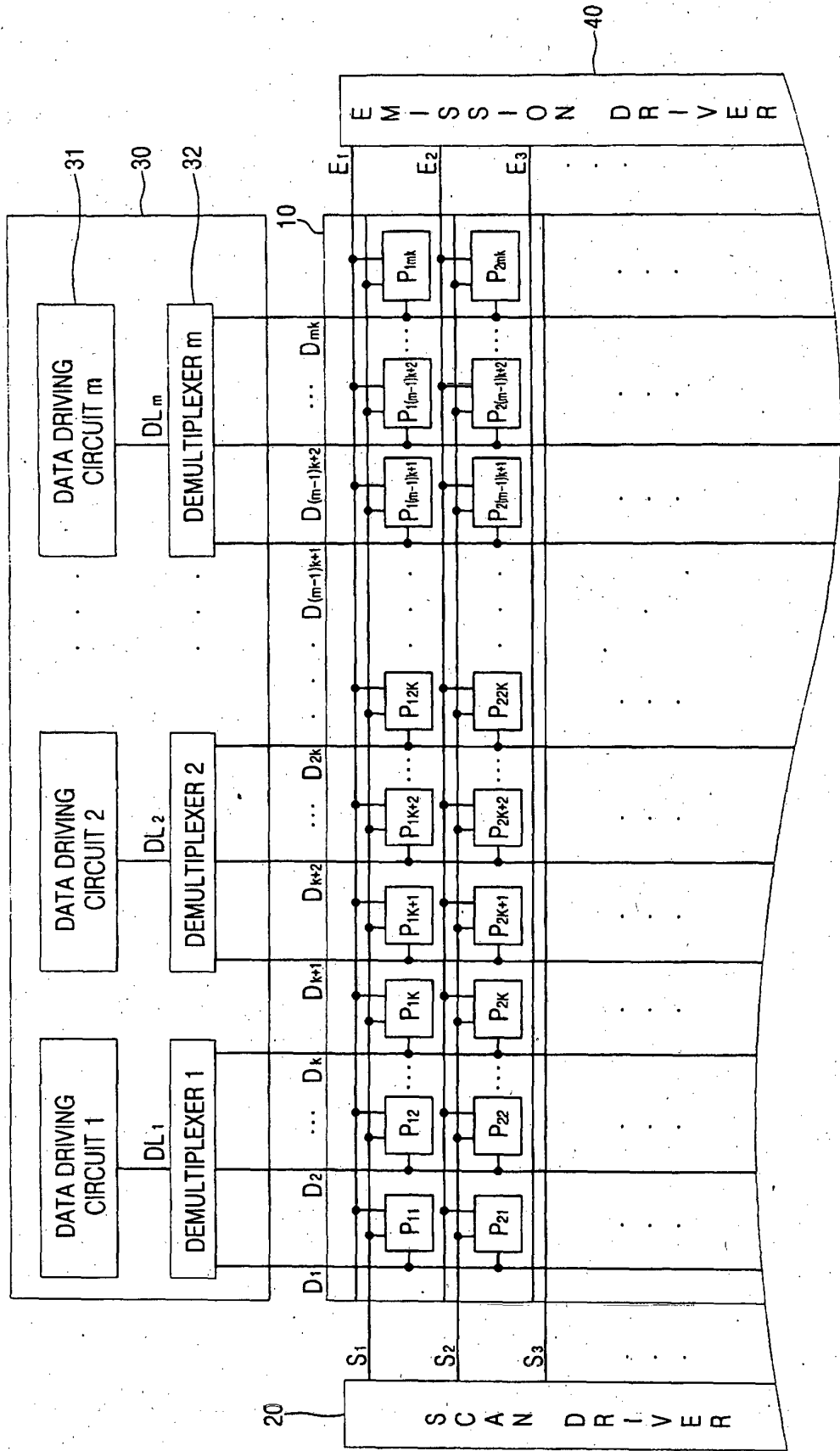


FIG. 3

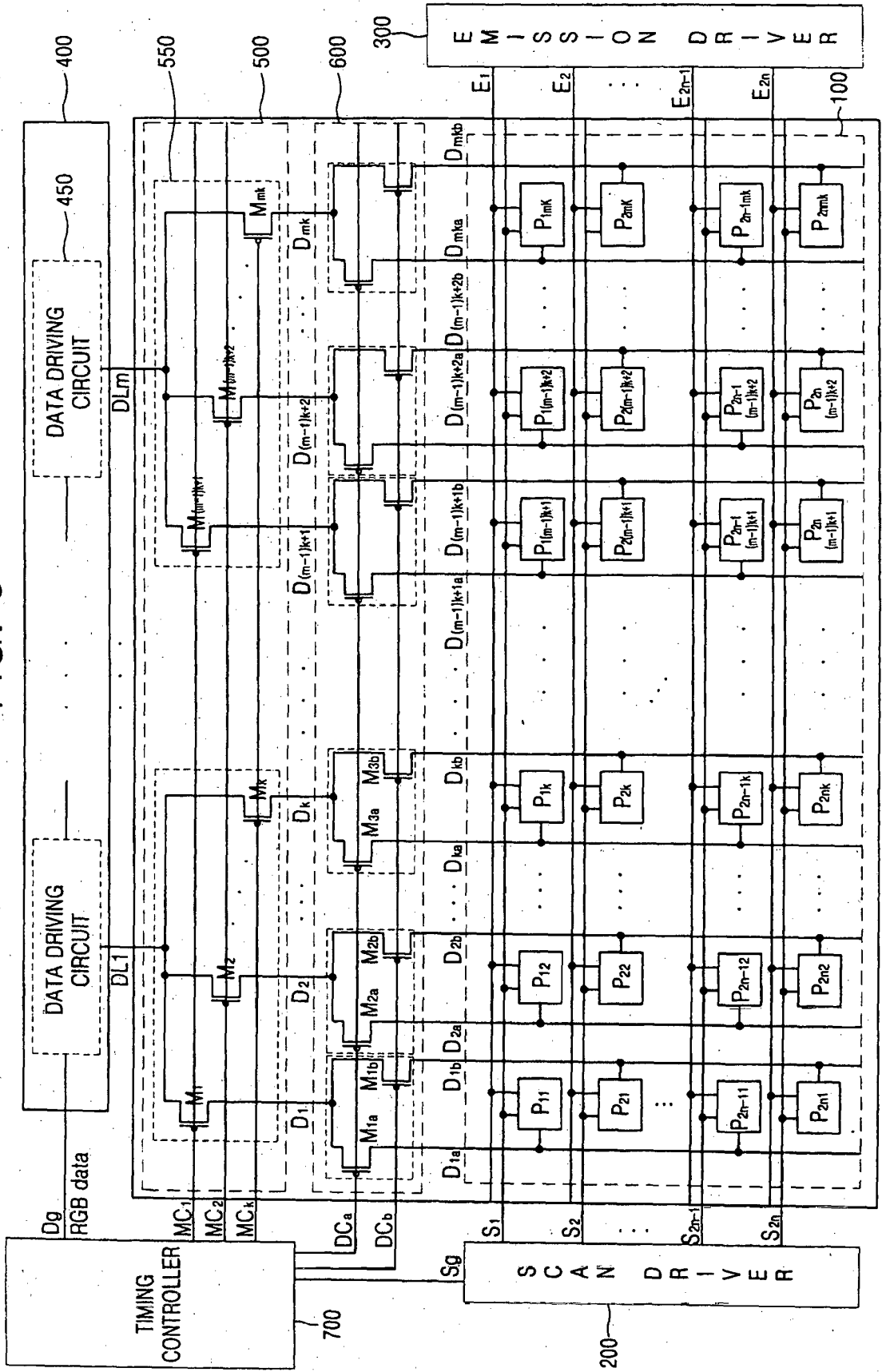


FIG. 4

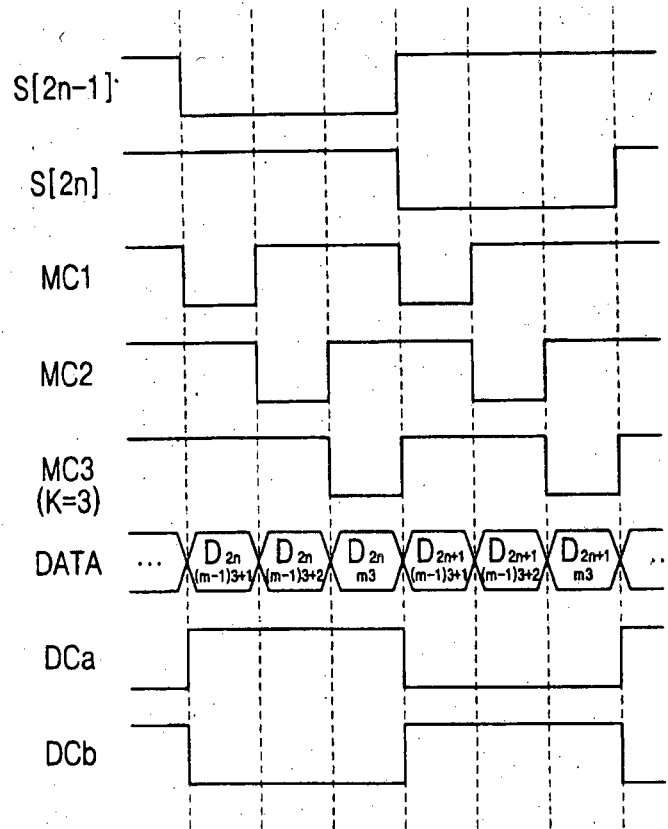


FIG. 5

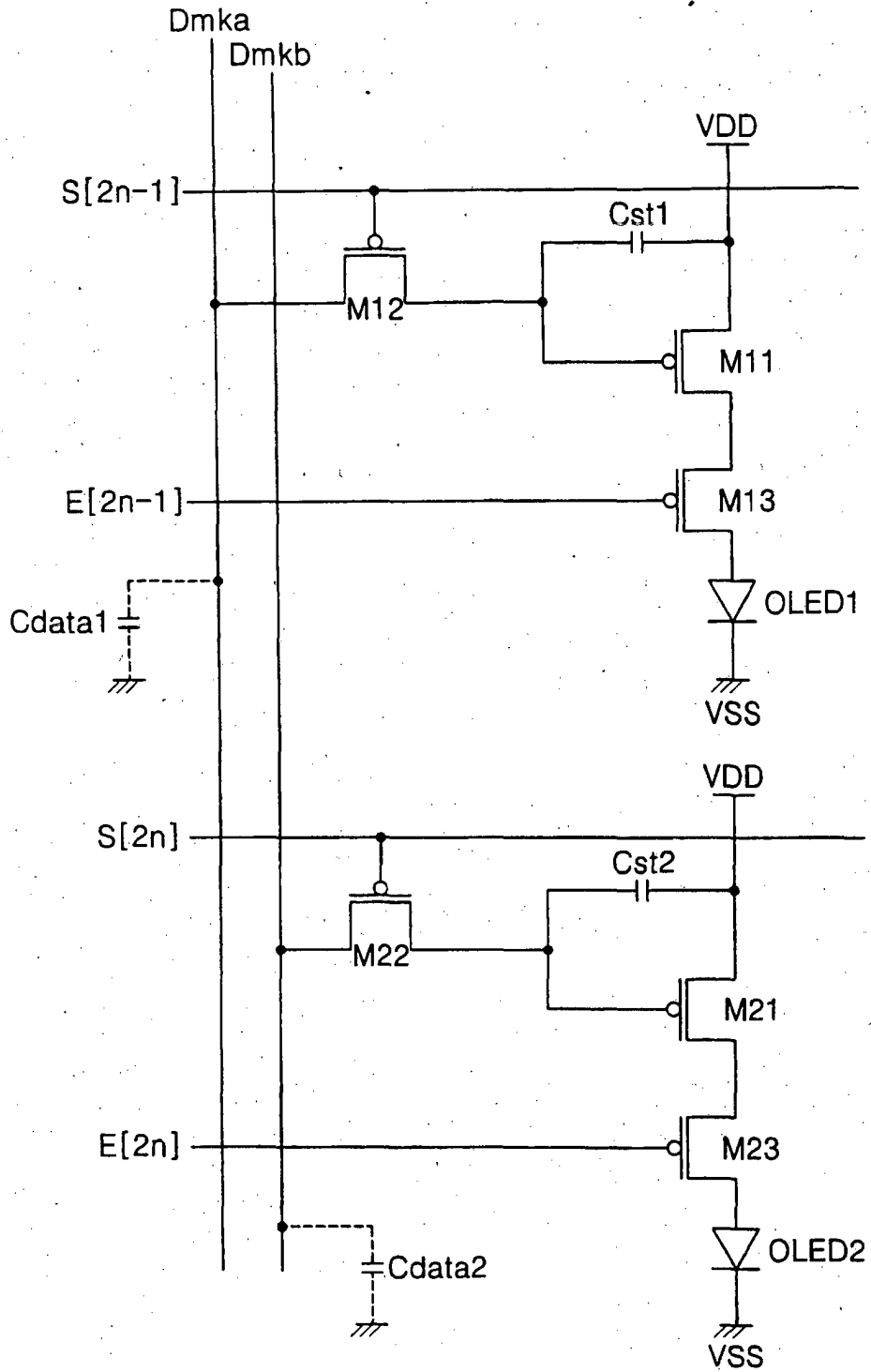
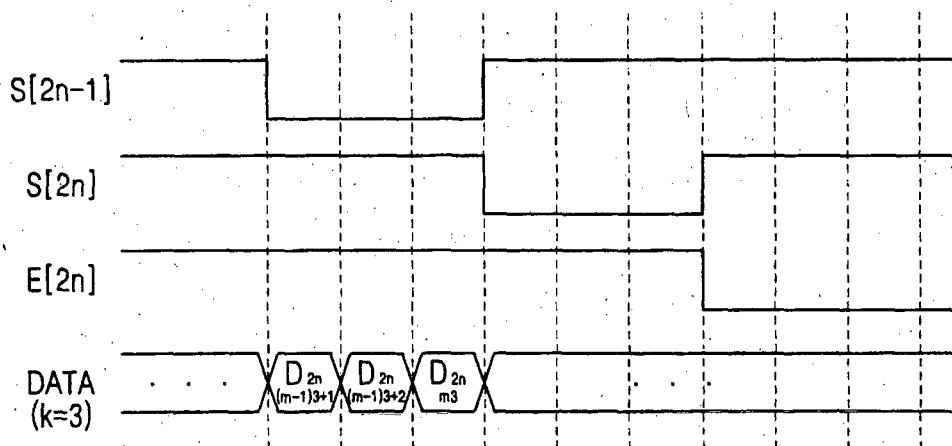


FIG. 6



**REFERENCES CITED IN THE DESCRIPTION**

*This list of references cited by the applicant is for the reader's convenience only. It does not form part of the European patent document. Even though great care has been taken in compiling the references, errors or omissions cannot be excluded and the EPO disclaims all liability in this regard.*

**Patent documents cited in the description**

- US 6366026 B [0022]
- US 20050024297 A [0023]
- US 20060097965 A [0024]
- WO 2005116968 A [0025]

专利名称(译)	有机发光二极管显示装置及其操作方法		
公开(公告)号	<a href="#">EP1764772B1</a>	公开(公告)日	2014-02-26
申请号	EP2006254812	申请日	2006-09-15
[标]申请(专利权)人(译)	三星斯笛爱股份有限公司		
申请(专利权)人(译)	三星SDI CO., LTD.		
当前申请(专利权)人(译)	三星DISPLAY CO., LTD.		
[标]发明人	CHOI SANG MOO C O SAMSUNG SDI CO LEGAL PARK YONG SUNG C O SAMSUNG SDI CO LEGAL		
发明人	CHOI, SANG-MOO, C/O SAMSUNG SDI CO.,LEGAL PARK, YONG-SUNG, C/O SAMSUNG SDI CO.,LEGAL		
IPC分类号	G09G3/32		
CPC分类号	G09G3/3233 G09G3/3291 G09G2300/0842 G09G2300/0861 G09G2310/0224 G09G2310/0297 G09G2320/0223		
优先权	1020050086440 2005-09-15 KR		
其他公开文献	EP1764772A2 EP1764772A3		
外部链接	<a href="#">Espacenet</a>		

摘要(译)

公开了一种具有多路分解器的有机发光二极管 ( OLED ) 显示装置和操作该OLED的方法。在OLED器件中，每个像素列被提供两条数据线，并且每条数据线连接到列的奇数或偶数行像素。因此，可以在一个扫描周期期间将数据信号提供给数据线之一，并在下一个扫描周期期间将数据信号发送到相应的像素。因此，因为数据驱动器仅驱动列的一半像素，所以驱动时间减少。

FIG. 1  
(PRIOR ART)

