

(19) (KR)
(12) (B1)

(51) 。 Int. Cl. 7
G02F 1/136

(45)
(11)
(24)

2003 05 14
10-0383705
2003 04 29

(21) 10-2000-0057230
(22) 2000 09 29

(65)
(43)

2001-0030536
2001 04 16

(30) 1999-276014 1999 09 29 (JP)

(73) 가 가 5 7 1

(72) 5 7 1 가 가

(74)

:

(54)

(23) 2 (20) (12') 1 (10) (36a) (36b) (CS') (36) 1
2 , . , .

8

, , , ,

1 1 LCD .
2 1 .
3 1 - .
4 1 - .
5 2 LCD .
6 5 .
7 5 - .

8 LCD 1 .
9 8 .
10 8 - .
11 8 - .
12 LCD 2 .
13 12 LCD .
14 13 .

< >

10 :
11 :
12' :
20 :
32 :
36 :
36a :
36b :
DL :
SL :

(LCD) .
, LCD ,
() ,
1 LCD (JP-A-2-220031 JP-A-4-153626) , 가 ,
2 4 .
, 1 LCD , 가 ,
, 가 , 가
가 , 가
2 LCD (JP-A-8-262484) , (columnar)
가 ,
2 가 LCD , 가 ,
, 가 , 가 ,
, 2 LCD , LCD 가 ,
.

, LCD
2 , LCD , 1 , 가 1 2
, LCD , 1 , 1

2 , 1 , 2 , 가 1 2

1 LCD (JP-A-2-220031 JP-A-4-153626) 1 (10)
 SL DL , TFTs Q_{ij} E_{ij} P_{ij} 가
 SL DL (11)가 IN (10) SL
 (31)가 (31) (clogging)
 (32)가 (,) (20) 1 3 4
 (23) 가 (31) (10) 4 4
 (23) 가 (31) (10) 4 4
 (12) P_{ij} 2 , TFT Q_{ij} A, SL_i DL_j G, D, G
 E_{ij} S A S , A
 D
 2 , OP (21)(3 4)
 , 2 SL_{i+1} E_{ij} 가
 1 - - 3 4 , (121) (13)
 (10) (121) (13) (121) 2 SL_i , SL_{i+1} , ... (122)
 (121) (13) (122(DL)) 2 DL_j , DL_{j+1} , ...
 (123) (122) (13) (123(E)) 2
 E_{ij} (14) (123) (15) (123(E))
 (121, 122 123) (12) (21) (22) (20) (23)
 (21) (22) (24) (22) (31)
 (10) (20) (31b) (31a) (12) (23)
 (34b) (34a)가 (31) (10)
 (20) CG (35)가 CG (20)
 (41 42) (10) (31a) (34a)
 1, 2, 3 LCD (31b) (34b) 가 (3)
 (34b)가 (10) (20) CG가 (34a)가
 (34b) (10) (20) CG 0.5 wt% 가
 (10) (20) CG (34a)가
 1, 2, 3 LCD (12) 가 (12) (31a)
 23) (23) (31a) (34a)
 (34a) 가 , 4
 (31a)가 DL SL
 DL SL (31b) 가 (34b)
 가
 2 LCD (JP-A-8-262484) 5 , 6
 P_{ij} AL_i 가 가 AL_i
 CS (23) 가
 5 - (22') (22'') CS가
 7 , N + N 16
 5, 6, 7 LCD P_{ij} (23) 가
 AL_i (23) (23)

(31a)가
 (34b) 3 (35) DL SL 가 4
 (23) 5, 6, 7 LCD (23) LCD 가
 8 LCD 1 9 8 1
 0 8, 10 11 8 1, 3 4 LCD (31b) (31a) (34b)
 (36) (31)가, (36a) (36b) (10)
 (12') (36)
 10 11 (22), (22') (22")
 CS' (12') (12') (12')
 (23) (23) (23) CS' 11 DL SL (36b)
 (12') 가 DL LCD SL
 (23) (23) (12') (12')
 LCD 가 8, 9, 10 11 LCD
 0.5 1.5mm (10) (10)
 , Cr, Al, Ta Mo 100 300nm (121) SL(G)
 (10) (121) (11),
 (12') (200 300nm 50 300nm
) (30 100nm)
 (13), (13) TFT Q_{ij} ()
) TFT Q_{ij} ()
 , Cr, Al, Ta Mo 100 300nm (122) DL_j D,
 (12') (122) (11), (12') (123)
 (ITO) 30 100nm E_{ij} (12') (123)
 (123) S () S가
 E_{ij} ()
 D (CVD) (14) (15) (12') (123)
 (15) 50 100nm 200 가 (15) (baking)
 1.5nm (20;) (20) 0.5
 , Cr CrO 100 200nm (21) (21)
 9 OP (21)
 0.5 2μm (22(R)) (21)

, 0.5 2 μ m (22(G)) , CS' .
 (22(G)) (21) (22(B)) .
 , 0.5 2 μ m (21) CS' .
 (22(B)) (21) CS' .
 , ITO 50 100nm .
 (23) (23) 50 100nm (24) CS' (23
) , (24) 30 60 200 ((24)
 24) 가
 (10) (20) (36a)가
 , IN (36b) (10) 0.1 0.5 , (36a)
 (36b) 0.1 5wt% , 4 6 μ m mm² 70
 (35)가 (20)
 , (10) (20) (12') CS' .
 , (36a) 가 (36a)가 (12')
 (23) (36b) DL
 SL , 가 IN (36) (10) (20
)
 , IN (clog
 ging) (32) (10) (20) , (41 42) .
 , LCD 가 (36a)가 (10) (36a) (20)
 1 (10 20) (35)가 (20)
 (35) (10) (10) (10 20) (36b)가 3 μ m (12')
 5 (36b) , 10.2cm(4) LCD (23) 가 100 mm²(0.05wt%) , 가 105 (12')
 170 (pressure-quicker) (36b) 가 100 mm²(0.05wt%) , 가 105
 12 13 9 10 LCD 2 1 C
 8 11 2 , CS' CS" (21) CS"
 S"가 SL i+1 (51) (35) , 1
 , LCD CS" (51) (35) 가 ,
 , (22, 22' 22") (51) (36b)
 , CG가 , LCD (51) (turnaround time) 가
 , (21) 2 OP , CS" (51) 가 SL
 , 2 DL j , CS" (51) 가
 i 13 14 , 13 CS" (51)
 14 (52) (22, 22' 22") (52) (36b)
 , CG가 , LCD
 , 14 (23) (23) E ij , CS' (51) 13
 , (23) SL i DL j
 2 , (51) CS" , (52)

· , · , LCD 가

(57)

1.

1 2 (10, 20);
 1 (12');
 2 1 (CS');
 1 (23);
 (36a) (36b) ,
 1 2 (36)

2.

1 ,
 1 (22, 22' 22")

3.

1 ,
 1 2

4.

1 ,
 2 2 (CS");
 2 (51)

5.

4 ,
 2 (22, 22' 22")

6.

4 ,
 2

7.

1 ,
 2 (52) 2
 , 2

8.

1 (10) (12') ;
 2 (20) 1 (CS') ;
 1 (23) ;
 1 2 (36b) (36a)
 ;

1 2

9.

8 ,
 1 (22, 22' 22")

10.

8 ,
 2 2 (CS") ;
 2 (51)

11.

10 ,
 2 (22, 22' 22")

12.

10

2

13.

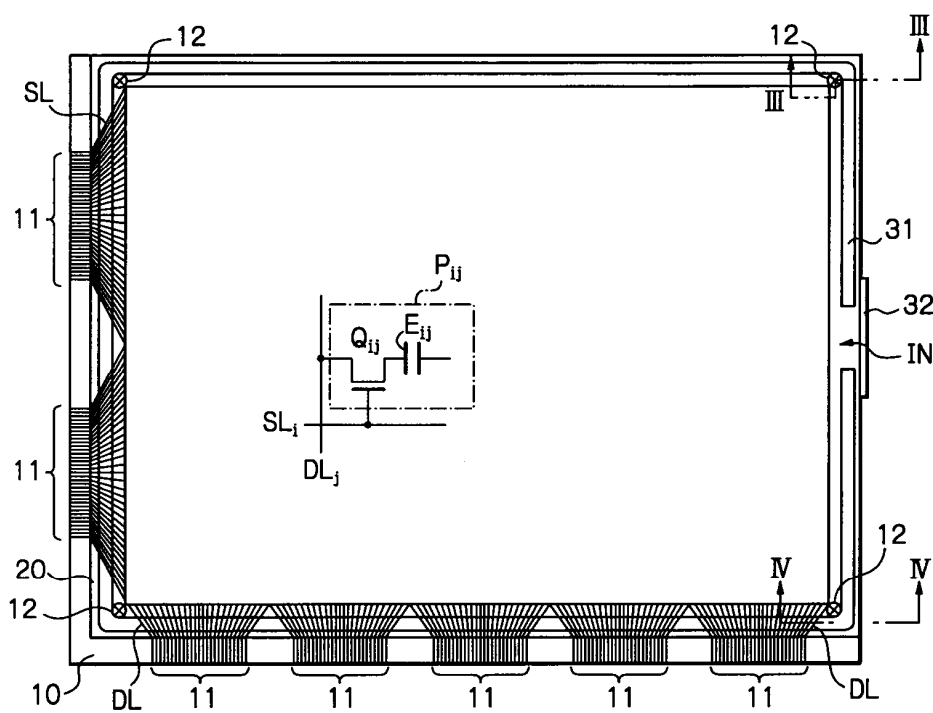
8

2

(52)

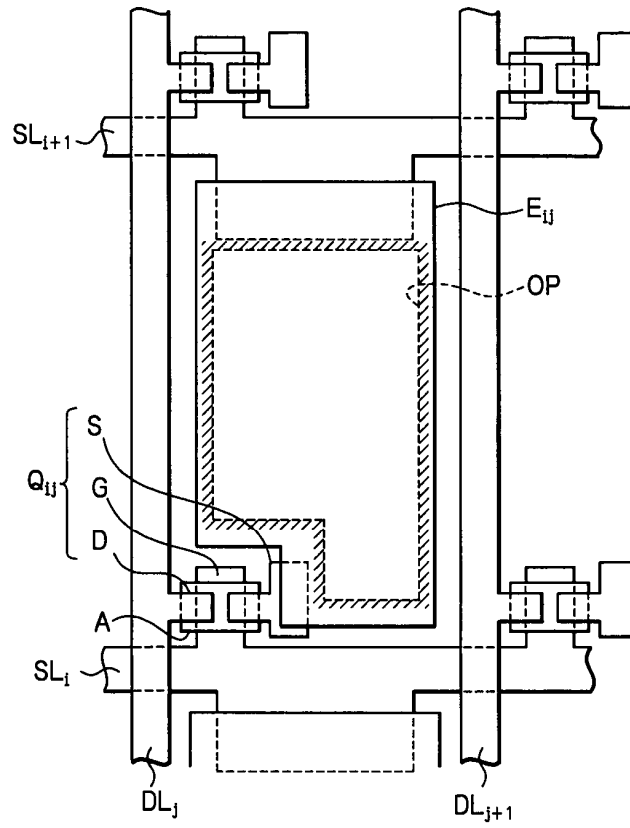
2

(종래 기술)



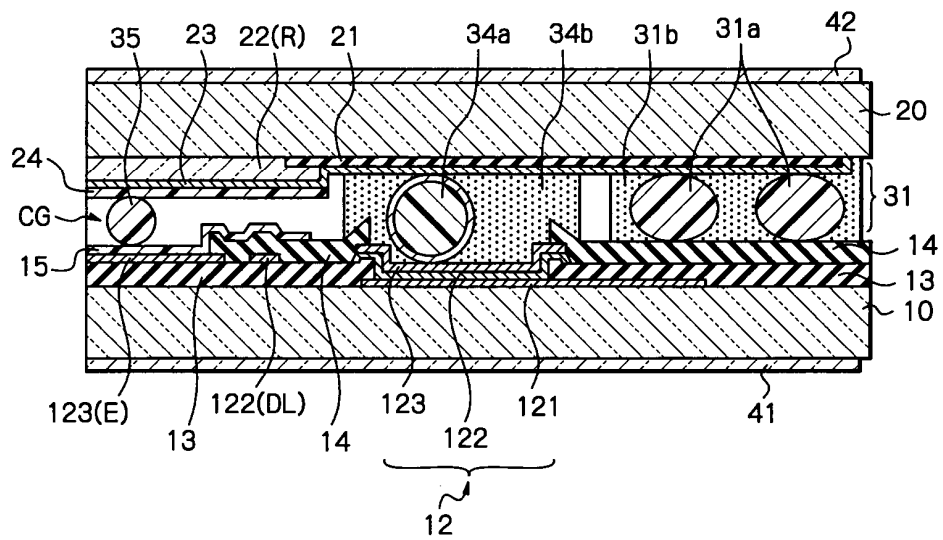
2

(종래 기술)



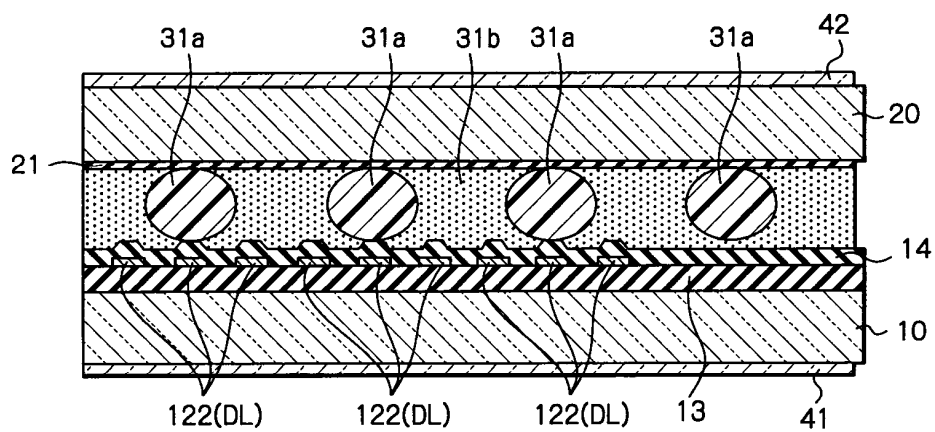
3

(종래 기술)



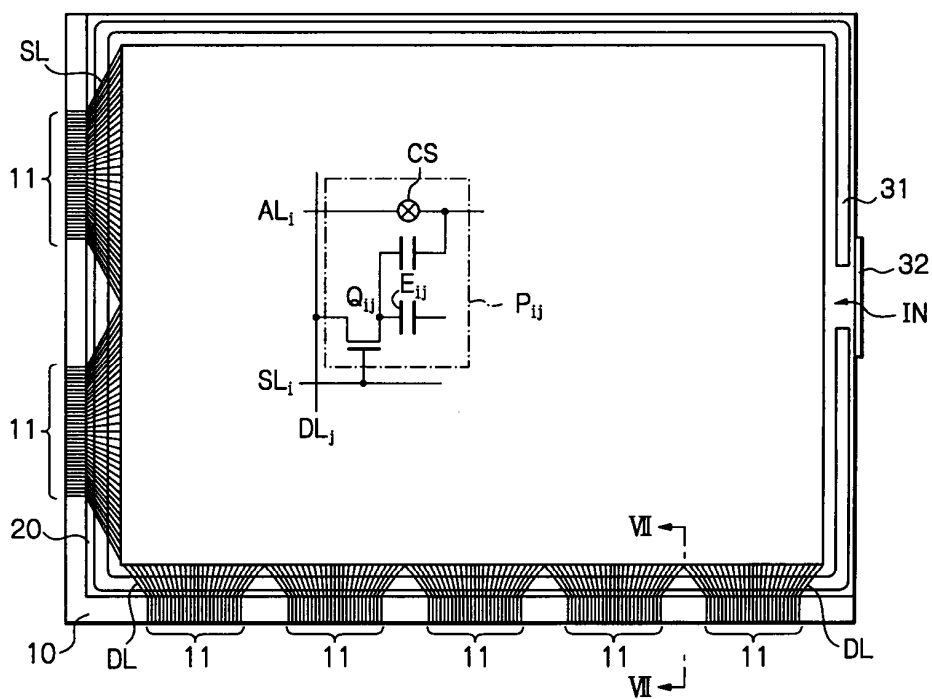
4

(종래 기술)



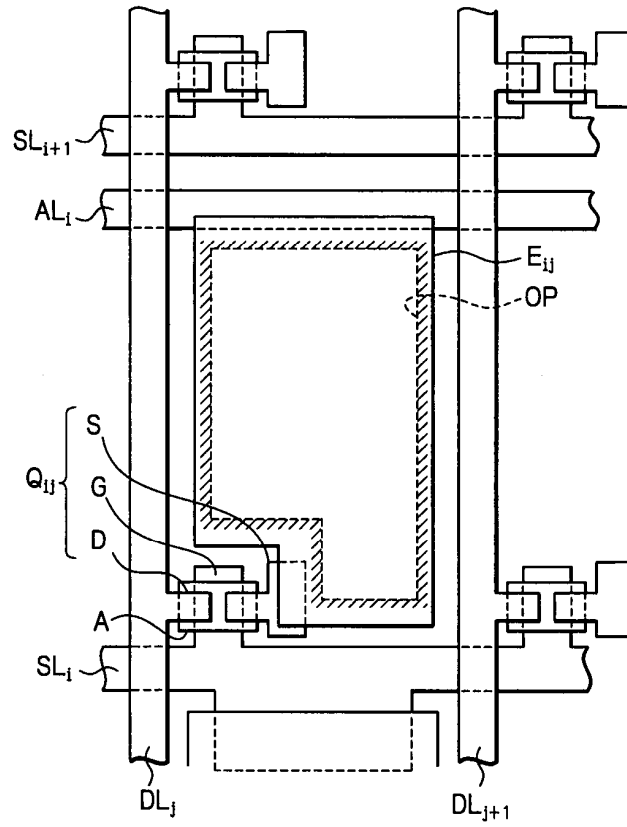
5

(종래 기술)



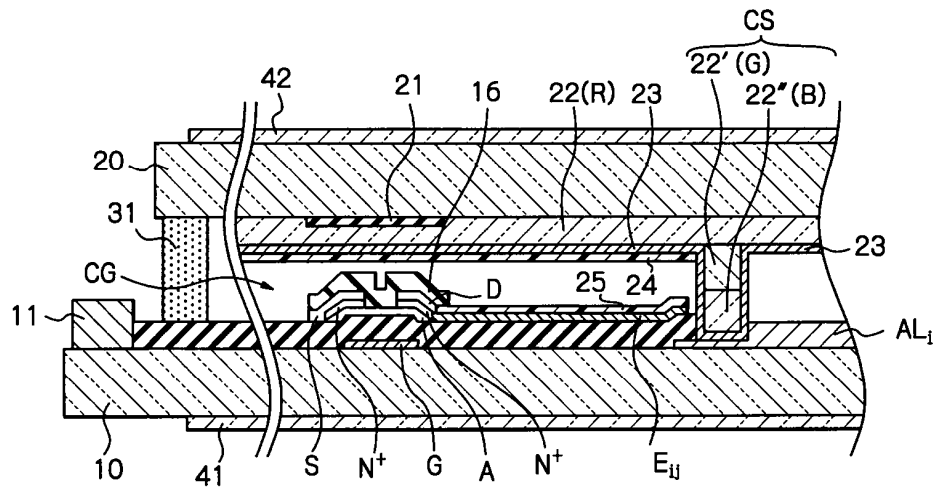
6

(종래 기술)

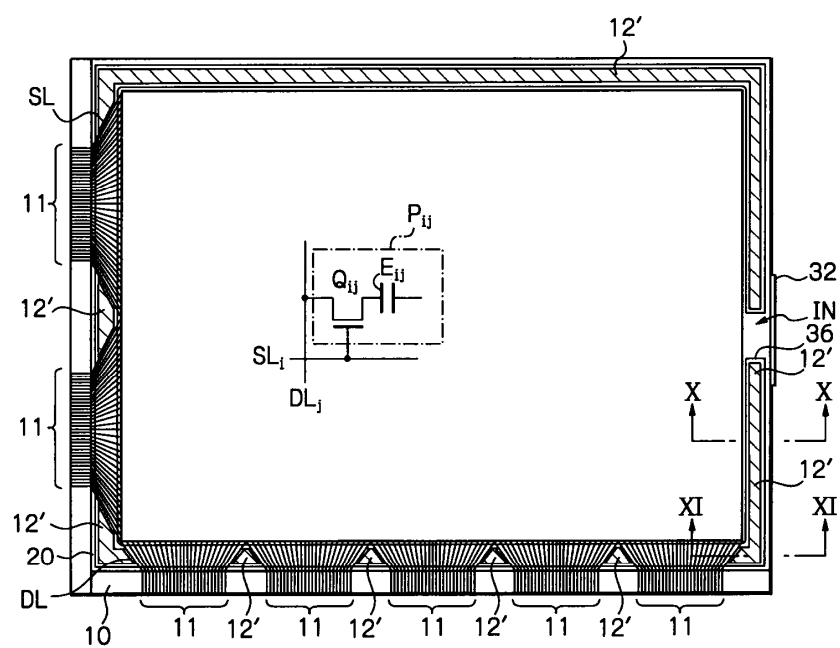


7

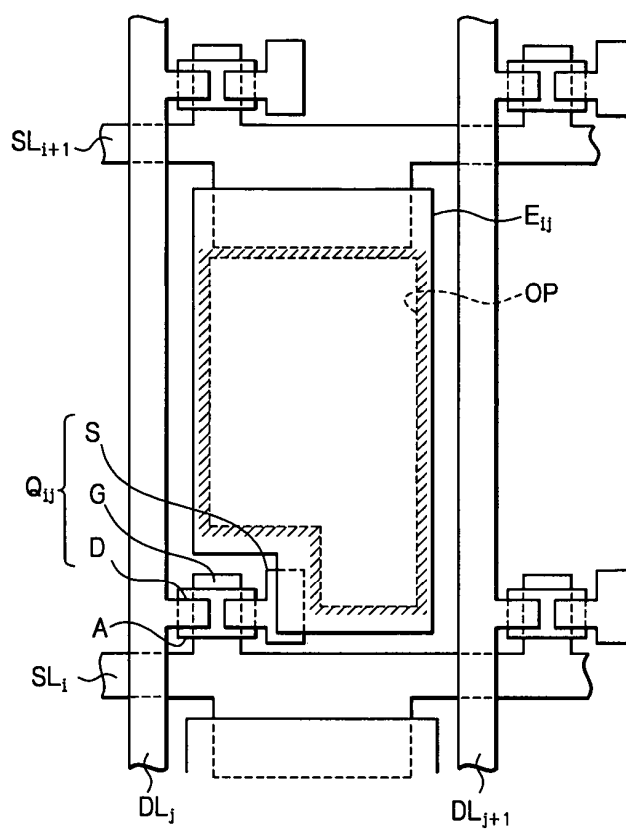
(종래 기술)

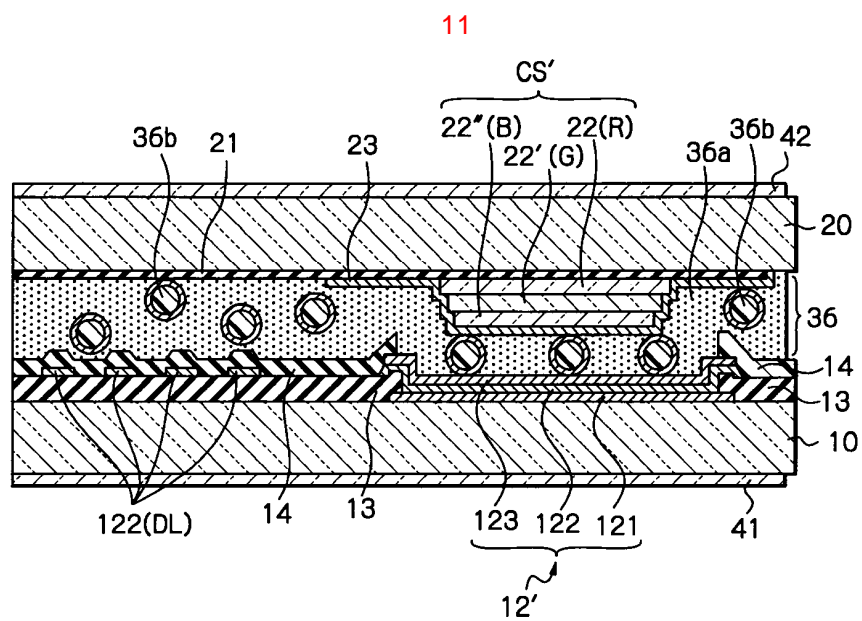
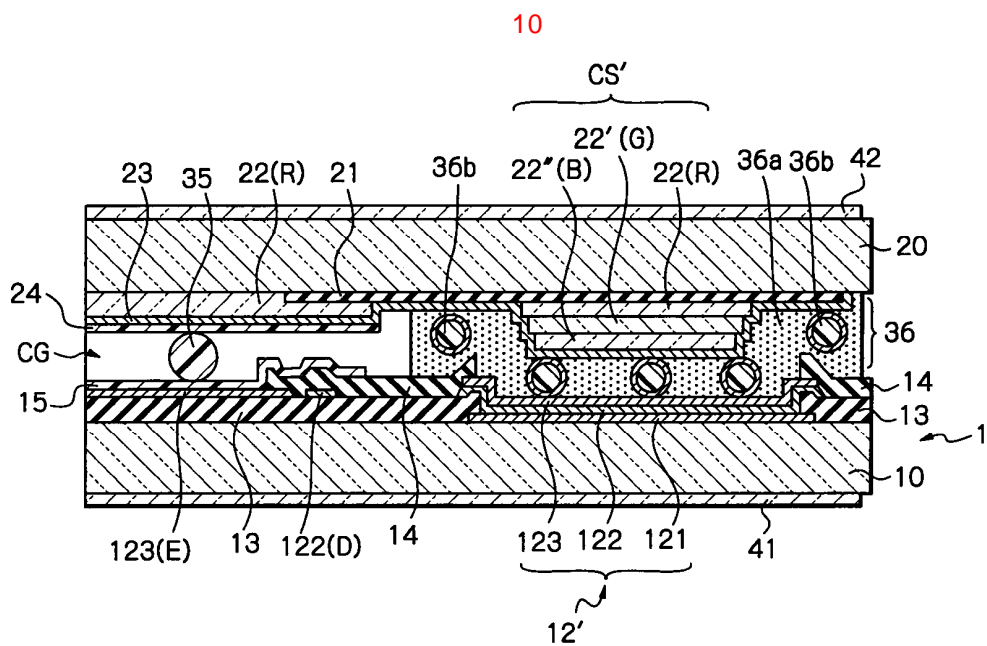


8

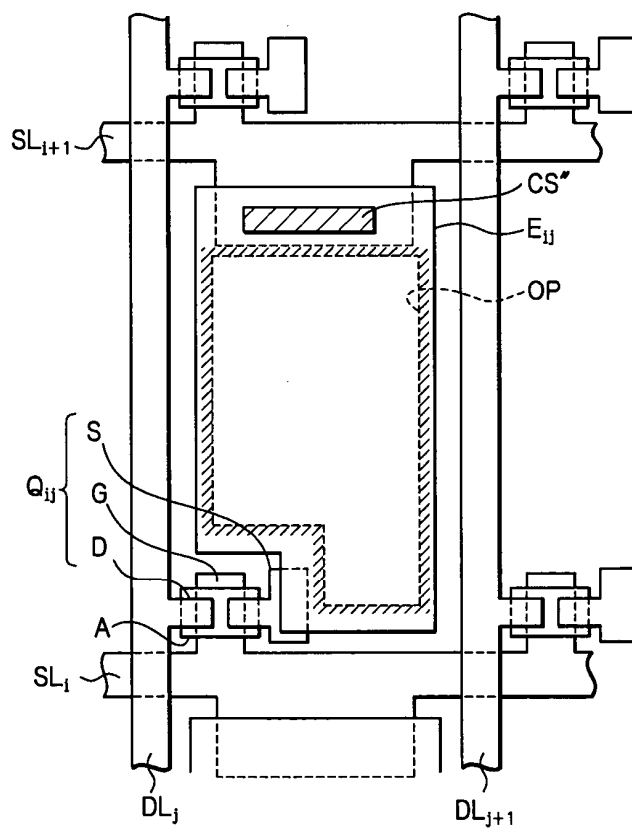


9

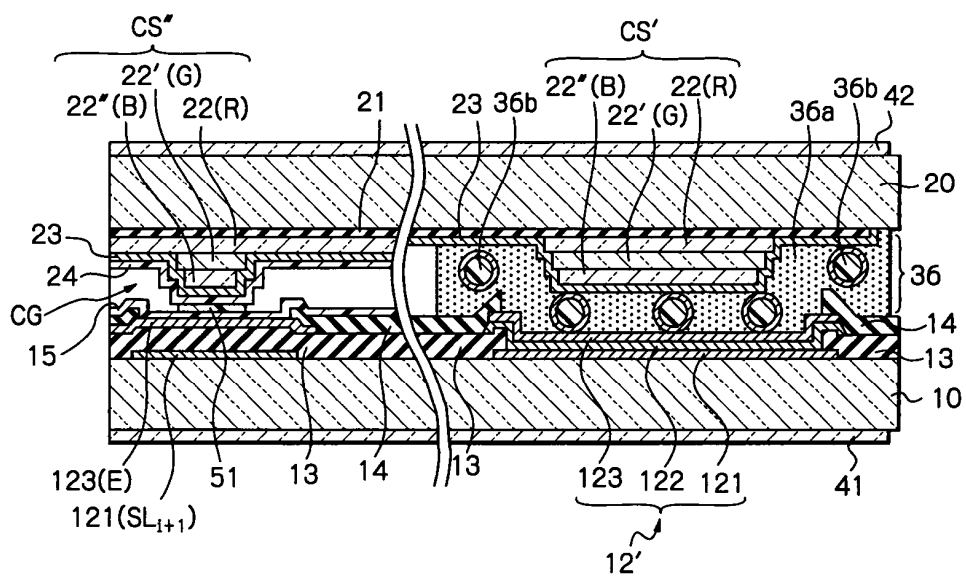


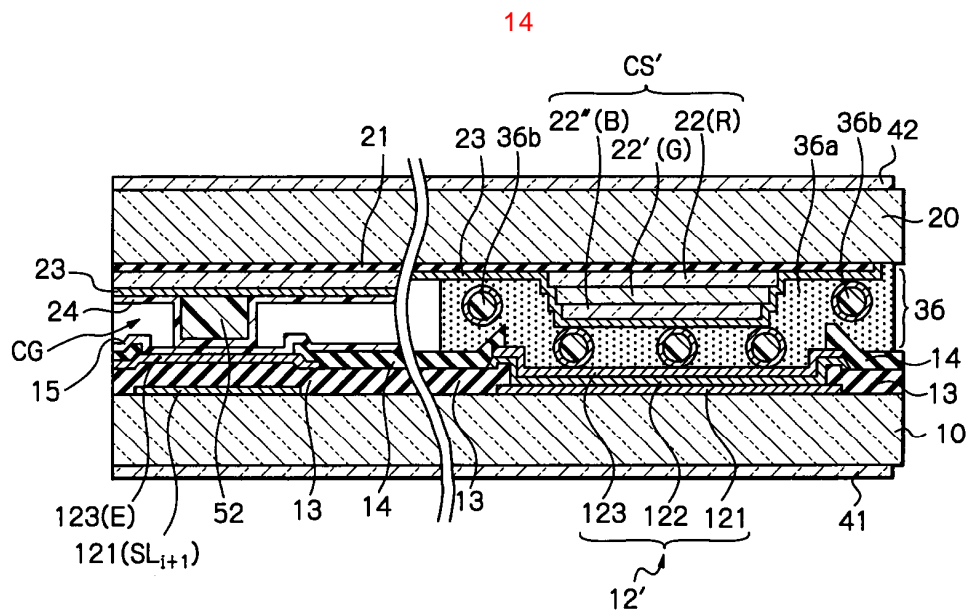


12



13





专利名称(译)	一种液晶显示装置，具有包括导电垫片的密封元件		
公开(公告)号	KR100383705B1	公开(公告)日	2003-05-14
申请号	KR1020000057230	申请日	2000-09-29
申请(专利权)人(译)	日本电气有限公司sikki		
当前申请(专利权)人(译)	日本电气有限公司sikki		
[标]发明人	TANI MASATOSHI		
发明人	TANI,MASATOSHI		
IPC分类号	G02F1/1335 G02F1/1339 G02F1/1362 G02F1/1345 G02F1/136		
CPC分类号	G02F1/13394 G02F1/136213 G02F1/1339 G02F1/133512		
代理人(译)	CHANG, SOO KIL CHU，晟敏		
优先权	1999276014 1999-09-29 JP		
其他公开文献	KR1020010030536A		
外部链接	Espacenet		

摘要(译)

在液晶显示装置中，在第一绝缘基板上形成转移电极，在第二绝缘基板上形成柱状间隔物和对电极。由密封材料和导电隔离物形成的密封元件粘附并密封第一和第二绝缘基板，使得反电极通过导电隔离物与转移电极接触。

