

(19) (KR)  
(12) (B1)

(51) 。 Int. Cl. <sup>7</sup> (45) 2002 12 18  
G02F 1/13 (11) 10 - 0365494  
(24) 2002 12 06

---

(21) 10 - 2000 - 0041531 (65) 2002 - 0008432  
(22) 2000 07 20 (43) 2002 01 31

---

(73) .  
20  
(72)  
642 - 3  
642 - 3

(74)  
:

---

(54)

---

가 .  
가

3

1

2 1 "A - A ' "

3

4 3

5a 3

5b 5a "B - B' "

6a 3

6b 3

7 3 가

<

2 : 4 :

6,8 : 10 :

12 : 14,20 : /

16,18 : 22 :

22a : 24,54 :

24a : 26,56 :

28,58 : 28a :

52a : 62 :

가

, (NoTebook Personal Computer; "NTPC" )  
 1 2 , (54)가 (Support/Main) (58) , (58)  
 Bottom) (62) , (58) (Case,Top) (52) (Cover,  
 58) (58) (58)  
 10), (12), / (14,20) / (16,18)  
 , (6,8) / (2,4)  
 (58) (54)

[illegible]

가 가 6b (22a)

28a) (22) (24)가 , (24) (28) ( (22) 가 가 (22) (28) (24) (26)가 , (26) (24) (28) (22) (26) (28) (22) 7 (26)

(26) (26) (24) (22a) (24) (24)가 (26) (24)

가

(57)

1.

가

2.

1

가

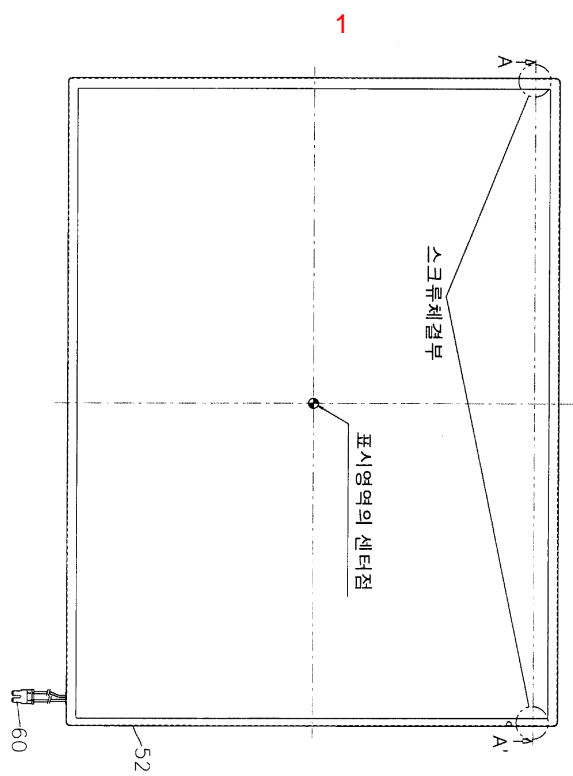
3.

1

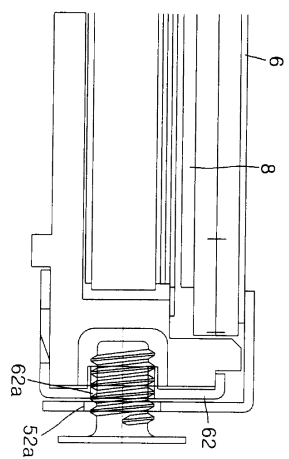
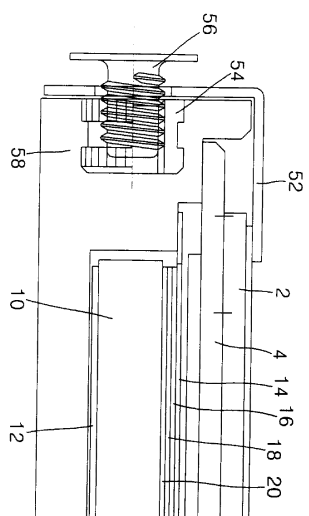
가

4.

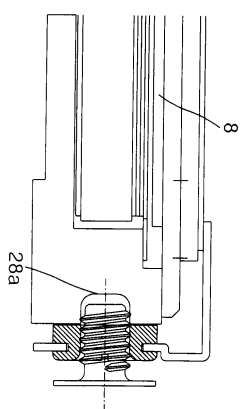
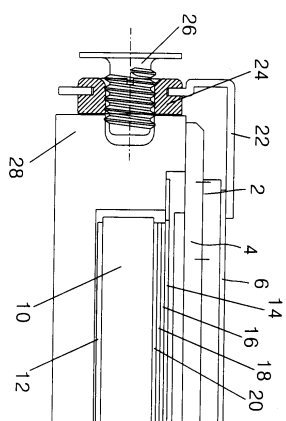
1 ,



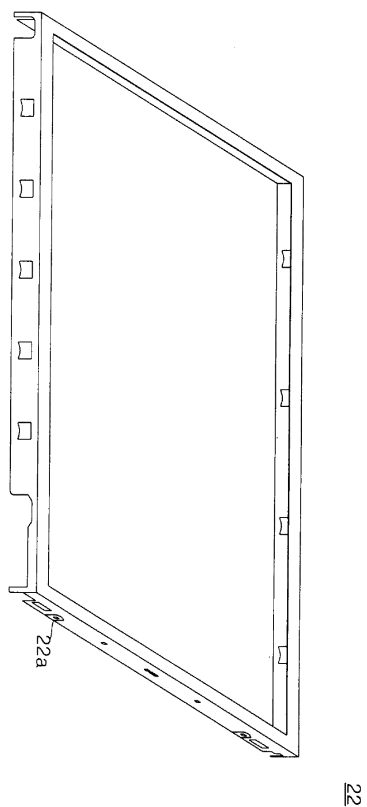
2



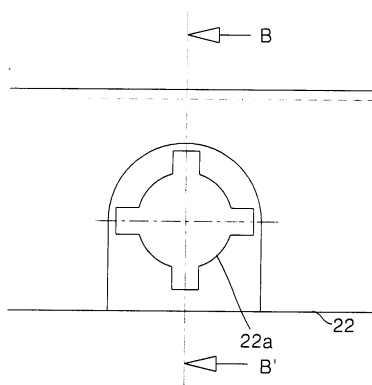
3



4

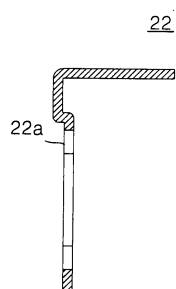


5a

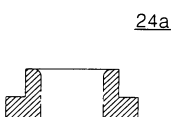




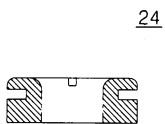
5b



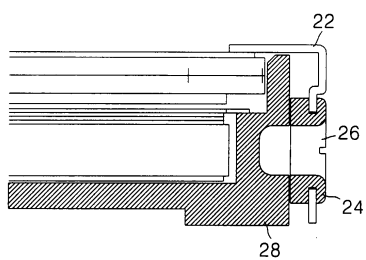
6a



6b



7



专利名称(译)	液晶显示器		
公开(公告)号	<a href="#">KR100365494B1</a>	公开(公告)日	2002-12-18
申请号	KR1020000041531	申请日	2000-07-20
[标]申请(专利权)人(译)	乐金显示有限公司		
申请(专利权)人(译)	LG显示器有限公司		
当前申请(专利权)人(译)	LG显示器有限公司		
[标]发明人	KIM YOUNGSU 김영수 LEE JOUNGJAE 이중재		
发明人	김영수 이중재		
IPC分类号	G02F1/13		
代理人(译)	KIM , YOUNG HO		
其他公开文献	KR1020020008432A		

#### 摘要(译)

液晶显示装置技术领域本发明涉及一种用于防止液晶模块固定螺母空转的液晶显示装置。根据本发明的液晶显示装置包括：支撑主体，其中堆叠有背光单元和液晶面板；壳体顶部，其围绕液晶面板的边缘和支撑主体，并且在其一侧具有至少一个孔，并且，通过将螺钉穿过螺钉孔和插入螺母拧紧到支撑主侧来固定壳体顶部和支撑主体的螺钉。3

