

(19)  
(12)

(KR)  
(B1)

(51) 。 Int. Cl. 7  
G02F 1/13

(45)  
(11)  
(24)

2002 05 04  
10 - 0335453  
2002 04 23

(21) 10 - 2000 - 0030571  
(22) 2000 06 03

(65) 2001 - 0007225  
(43) 2001 01 26

(30) 99 - 158577 1999 06 04 (JP)

(73) 가 가 가  
가

5 7 1

(72) 5 7 1 가 가

(74)

:

(54) L C D L C D

LCD LCD LCD LCD (TCP)  
LCD LCD TCP (30) (21) (21) TCP  
(30) (22) (22) (22)

2

LCD

1a LCD , 1b 1a A - A .

2 ( TCP ) 1a LCD T  
FT

3 1 LCD .

4 3 LCD TFT .

5 3 LCD TCP 1 TFT

6 3 LCD LCD TFT TFT .

7a 7e TFT .

8 3 TFT .

9a 9b , TCP  
1 TFT .

10a 10b 가 , TCP  
1 TFT .

11 2 LCD

12a 12b , TCP

13a 13b 가 , TCP

14 3 LCD TFT .

15a 15c 가 , , , TCP  
14 .

LCD , LCD LCD

LCD PC LCD LCD LCD IC . LC  
( ) .





, (22) "X" (21) "R"

$X = 2R - W$

TCP , TCP

4 A - A (21) TCP (30) 5 , TFT (11) TFT (31), (22) (33), (34) ITO (32) TCP (30)

6 , LCD TFT (41), LCD (41) TFT (31) TFT (46), TFT (31) / (41) 44, n<sup>+</sup> / (44) (45), (45) (42) ITO (32) n<sup>+</sup>

7a 7e , 1 1 LCD 2 7a 7e

7a , TFT (31) 2000 (Cr) (13) 5 TFT (X<sub>g</sub>) (13) (41) (22<sub>G</sub>) (13)

7b , (46) 5000 SiO<sub>2</sub> SiN<sub>x</sub> + , CVD 2000 200 n<sup>+</sup> TFT (46) TFT

7c , (46) 2000 CR , CR

Cr 6 X<sub>d</sub> 22D (14) TFT (42 43) , 7a 7c "X" (X<sub>g</sub> X<sub>d</sub>)

7d , (34) (46) 2000 (46) (34) (34)

7e (32) , TFT (42) 500 ITO (32) , ITO TC

7a 7e (12) TFT (11) , LCD TFT (11) , LCD (12) ACF TCP (22) TCP (13) LCD (14)

30 μm "W", (21) (21) (22) 8 , (21) μm 20 μm 1.0 mm , ACF 1.2 mm 20μm 가 , TCP 1.4 mm (30) 15 ACF TCP (22) "X" X = 2R - W 4 μm가 "R" 17 μm 1.1 mm

9a 9b , (21) TCP (30) 가 (22) , TCP (30) TCP (30), (21) , 10a 10b , TCP (30) , TCP (30) 가 (22) 가 (22) , X = 2R - W 가

11 , 2 LCD (52) (51) 1400 μm , 30 μm , (51) 20 μm 100 μm 5 (22) (22) 100 μm 4 μm

9a 9b , 가 (51) 12a 12b , (52) TCP (30) , 13a 13b , 가 가 (52) , 가 (51) (52) (51)

2 TCP (30) , (51) (51) (51)

14 , 3 LCD (62) 가 (61) 1  
 (62A) 2 (62A) (51) (62B) 61 ,  
 (62A) 8 μm (X1) 100 μm (62B) 4 μm (X2) 100 μm

3 , R X1 X2 가 "R" TCP  
 (62A) 19 μm (62B) 19 μm "R" 8 μm

15a 15b , (61) TCP (30) 15a  
 , 가 가 , (62)  
 15b , 가 , (62A)  
 . LCD 15c , 가 가 (62A) 가  
 , LCD (62B)

LCD TCP (737)

LCD

가

2 Al, Mo, Ta 가

, 4 μm 0.5 mm

(57)

1.

2 가 LCD 1 2 (11,12),

LCD 1 ,

LCD 2 LCD LCD ,

1 2 LCD (30)  
 (21, 51, 61) 가 ,

(21, 51, 61)

가 ,

(22, 52, 62)

LCD

LCD

2.

1 ,

X (22, 52, 62) ,

R (21, 51, 61) (30) ,

W (21) ,

$$X = 2R - W$$

LCD

LCD

3.

1 ,

(22)

LCD

LCD

4.

1 ,

LCD (52) LCD .

5.

1 ,

LCD (62) LCD (62A) (62B) .

6.

LCD LCD 1 (11) ,

2 (12) ,

LCD 1 (11) 2 (12) LCD

1 (21, 51, 61) (22, 52, 62)

(22, 52, 62)

(21, 51, 61)

LCD

7.

6 ,

X (22, 52, 62) ,

R (21, 51, 61) (30) ,

W (21, 51, 61) ,

$$X = 2R - W$$

LCD .

8.

6 7 ,

(21) LCD .

9.

6 7 ,

(52)

LCD .

10.

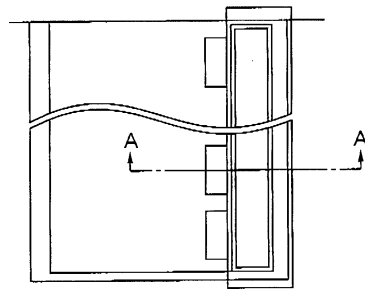
6 7 ,

(62) (62A) (62B)

LCD .

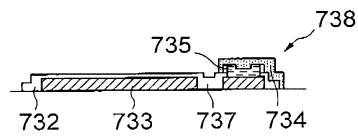
1a

종래 기술



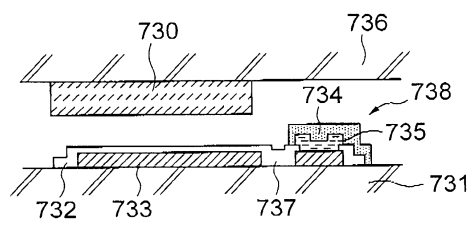
1b

종래 기술

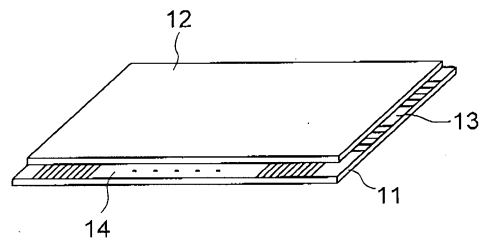


2

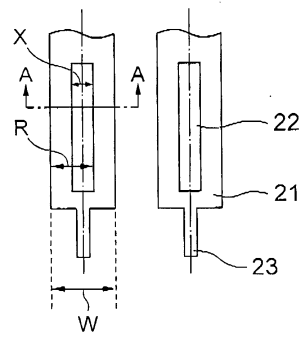
종래 기술



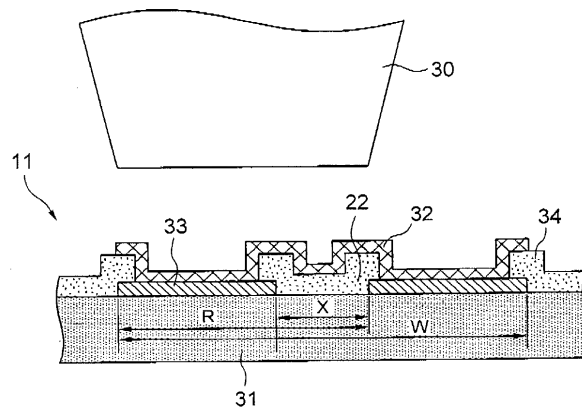
3



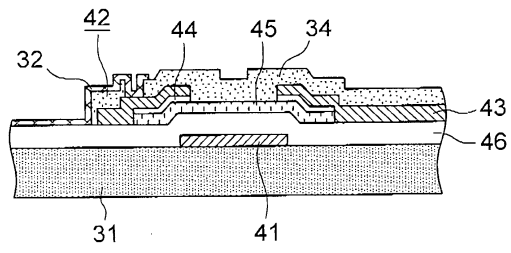
4



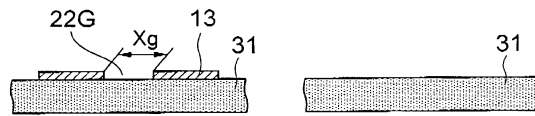
5



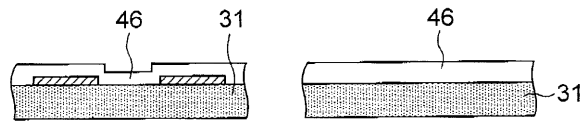
6



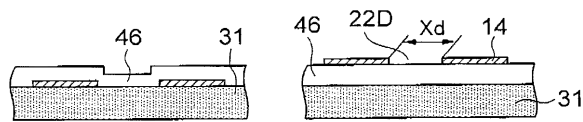
7a



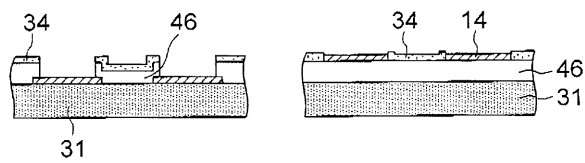
7b



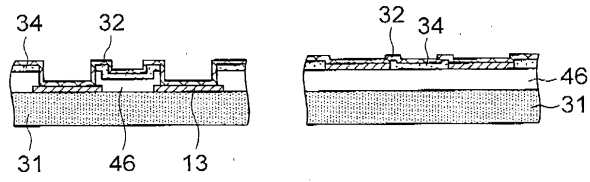
7c



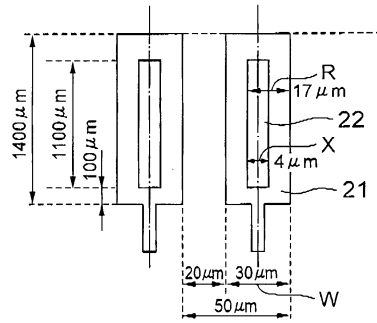
7d



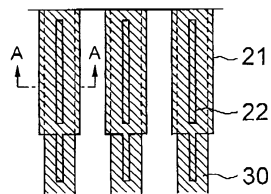
7e



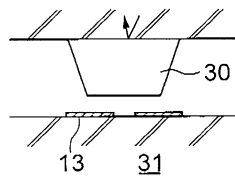
8



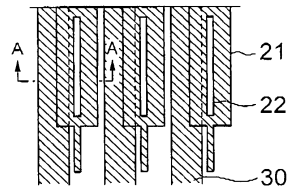
9a



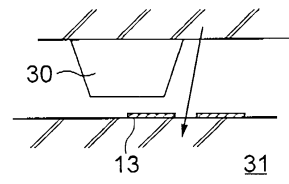
9b



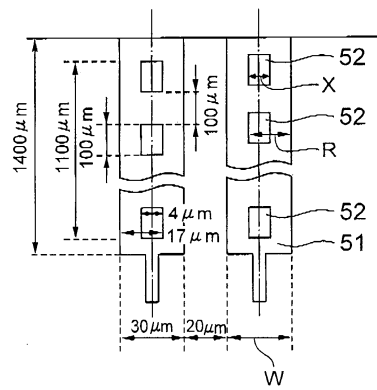
10a



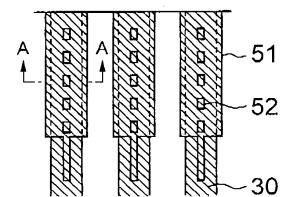
10b



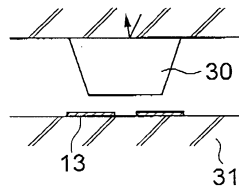
11



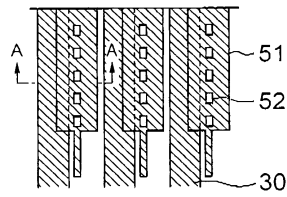
12a



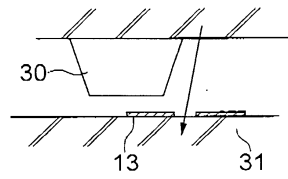
12b



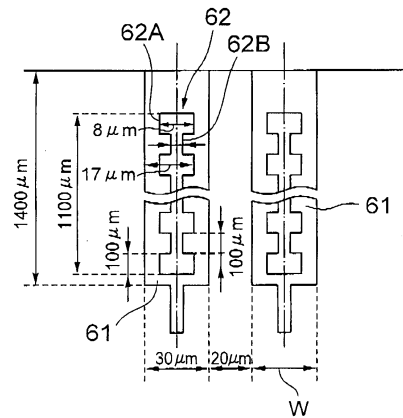
13a



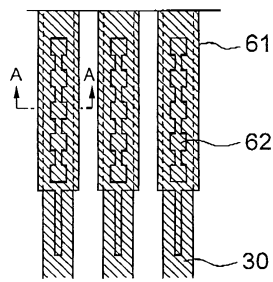
13b



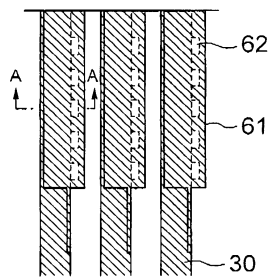
14



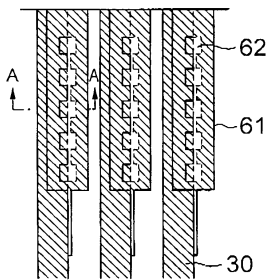
15a



15b



15c



专利名称(译)	用于LCD器件的LCD面板单元		
公开(公告)号	<a href="#">KR100335453B1</a>	公开(公告)日	2002-05-04
申请号	KR1020000030571	申请日	2000-06-03
申请(专利权)人(译)	日本电气有限公司sikki		
当前申请(专利权)人(译)	日本电气有限公司sikki		
[标]发明人	FUJITA AKIRA		
发明人	FUJITA,AKIRA		
IPC分类号	G02F1/13		
代理人(译)	韩国专利公司 CHO, YOUNG WON		
优先权	1999158577 1999-06-04 JP		
其他公开文献	KR1020010007225A		

摘要(译)

LCD显示装置包括用于驱动LCD面板单元和LCD面板单元的LCD驱动器单元(TCP)。信号线的面板端子连接到LCD驱动器的相应TCP引线30。面板端子(21)连接到面板端子(21)和TCP引线(22)用于检查基板(30)是否对齐。当正确对齐时,光不能通过狭缝22,但是如果对准不完整,则光透过狭缝22。这样,肉眼检测对准是否差。2指数方面液晶显示面板

종래 기술

