

(19)
(12)(KR)
(A)(51) 。 Int. Cl. ⁷
G02F 1/136(11)
(43)2002 - 0010215
2002 02 04(21) 10 - 2000 - 0043508
(22) 2000 07 27

(71)

3 416

(72)

302 801

328 1005

24

(74)

:

(54)

, 가

1 1 2
1 2가
1 2

1 2

, , 1 2
.1 2
1 2

가

가

가

(ACF; anisotropic conducting film)

가

가

가

가

가

가

가

가

가

가

가

가

가

, 1 2 , 1 2 1
 2 가 .
 1 2 .
 1 , 1 2 1 2
 , 2
 , 가 가 .
 , 1 .
 1 .
 , 1 (10) 가 (21) , (21)
 (61)
 (21) (61) (P) , (P)
 (D) (P) (21) (61)
 (TFT)가 , (TFT) (PE)
 (D) () (11)가 (D)
 .
 (10) (1) 00) , (10) (100) (110) (130)가
 , (c2) (61) , (130) (61)
 1 (115) (114) , (110)
 (10) (120) (10) ,
 (120) 2 (124) (140)가 ,
 (21) (140) (21) (c1) (126)
 .
 (D) (134) ,
 (134) (c3, c4) (110) 1 (115)
 (120) 2 (124) .

, (D) (10) 3 (136) (120) 2 (1
3 (136) (c5, c6) 24)
(c1, c2, c3, c4, c5, c6) (10) (114, 115, 61, 134, 12
4, 126, 136)

(100)
1 (115) (134) 2
(124) (140) 3 (136) (126)
(140)
(21) (100) 가
1 2 (124, 115) (134, 136) (21) 가
(110) (100) (10)
1 (115)
2 5
2 (c1, c2) 3 4
(c3, c4) 1 ()
, 5 2 V - V' , 6 3 4 I - I'
(134) 2 5 (P) (c1, c2),
(c3, c4) (134) (c3, c4) 가 3 (136) (c5, c6)
(10) (Al) (Al alloy), (Mo) - (MoW),
(Cr), (Ta) (21, 22, 23) (134,
1)
가 (21), (21) (22), (2
2) 가 (21) (23) ,
(24) (24)
(26) 3, 4 6 (c3, c4) 가
(21, 22, 23) (24, 26)

(21, 22, 23) (24, 26) (SiN_x) (30)

(22) (30) (41)
, (41) (P) n
(52, 53) (22)

(52, 53) (30)

(61, 62, 63, 64)

21) (61), (61) (62), (가
(63), (61)
(61) (62) (64)

(61, 62, 63, 64) 2 (65) (21, 22, 23) 가

(22), (41), (62) (63) (TFT)

(61, 62, 63, 64) 가 (41) (30)
(70) (70) (c1) (30)
(23) (73) 가 (c2) (64)
(74) 가 (P) (63) (72) 가
(70) (30) (c3, c4) (26) (가
76) 가

(70) ITO(indium tin oxide) IZO(indium zinc oxide)
(80), (83), (84) (86)가

(80) (72) (63) (8
(84) (73, 74) (23) (64)
(23, 64) (23, 64)

(86) (76) (26)

(120) (121) (122)가
(122) (152) (151)
(83) (122) (73)
(122) (73) (83)

(110) (111) (112)가
(112) (152) (151)

(84) , (122) (73)

(112) (74) (84) ,

1) (c3, c4) (110, 120) (111, 121) (15
 1) (123)가 (123) (152) 1
 2 (115, 124, 1) (86) (123)
 (70) (30) (76) ,
 (76) , 4 (123)
 (76) (86)
 (123) (86)

(123) (110, 120)
 (c3, c4) (86) (76) (c3, c4)

(c3, c4) (86)
 (134, 1) (61, 62, 63, 64)

7a 8b

7a 8b , 3, 4 6

7a 7b (65) (66)가
 (30) (61, 62, 63, 64) (66)
 (75) (70) (75) (66)

8a 8b (24, 65) (21, 22, 23)
 (61, 62, 63, 64) (30) (70)
 (26) (76) 가 (70) (66)
 (75) 가 (86) (75, 76) (26,
 66) (24, 65)
 (24, 65)
 (66) (66)
 (c3, c4)

(26, 66) (c3, c4) (c1, c2, c5, c6)
 , 7a 8b (134)

2 8b

, (10) (21, 22, 23)
 (24, 26) , (30), n (41) (51)
 (22) (41)
 (24)
 (61, 62, 63, 64) , 7a 8b
 (65, 66) , (62) (63) (51)
 (52, 53) (41) , (70)
 (72, 73, 74, 75, 76) , (80),
 (83), (84), (86)

(41) (61, 62, 63, 64)
 가 가
 (41) (61, 62, 63, 64) 가 (62)
 (63) 가 (61,
 62, 63, 64)
 (61, 62, 63, 64) (65, 66)
 (52, 53) (61, 62, 63, 64) (41)
 , (62) (63) (61, 62, 63, 64)

(57)

1.

, 1 2 1
 2 가 , 1 2 1
 가 , 1 1
 1 , 2 2 2
 2

1 2

1 2

.

2.

1 ,

.

3.

2 ,

1 2

1 2 , 1

1 2

.

4.

1 ,

.

5.

1 3 ,

1 2

.

6.

1 3 4 ,

, 1 2

.

7.

1 3 4 ,

, 1 2

.

8.

1 3 ,

1

2

.

9.

7 ,

1 2
.

1 2

10.

1 ,

가

.

11.

10 ,

,

.

12.

,

,

1

2

1

2

1

2

가

,

1 2

.

13.

12 ,

.

14.

13 ,

1

2

1

2

,

1

1

2

.

15.

12 14 ,

.

16.

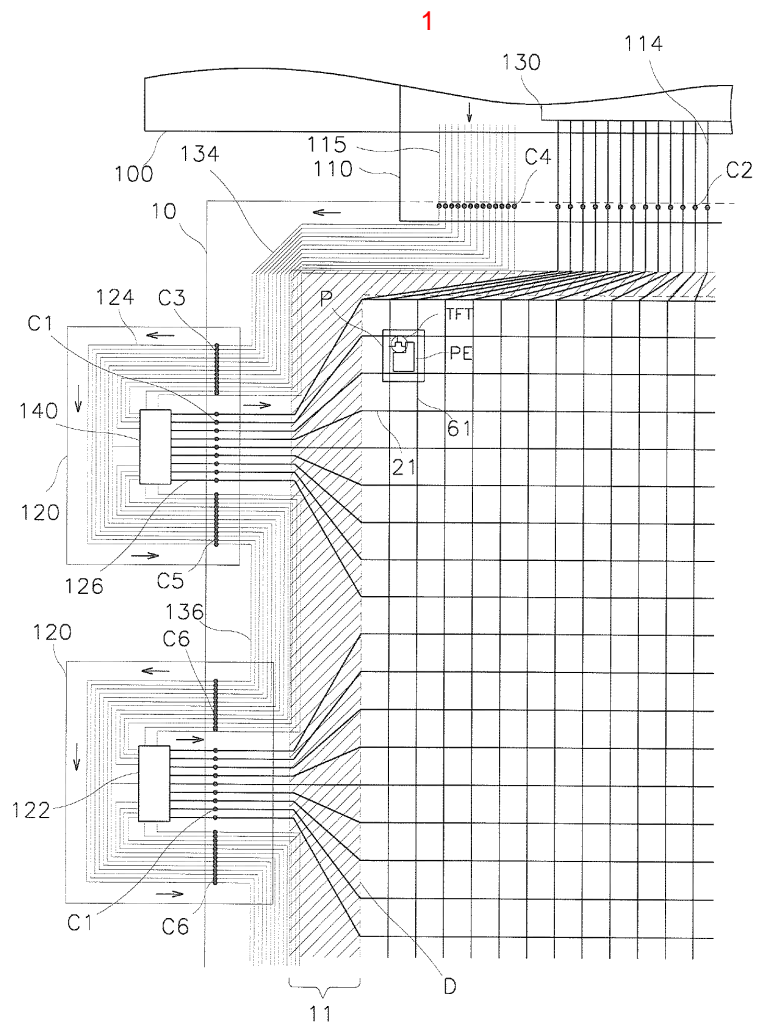
12 ,

가 , 1 1

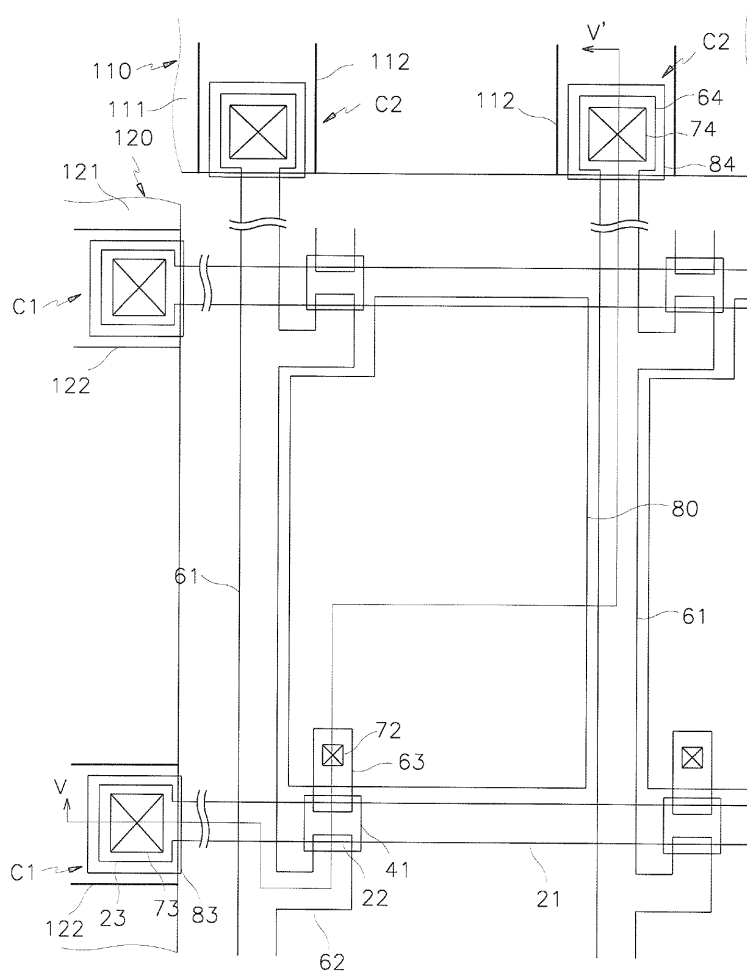
17.

12 ,

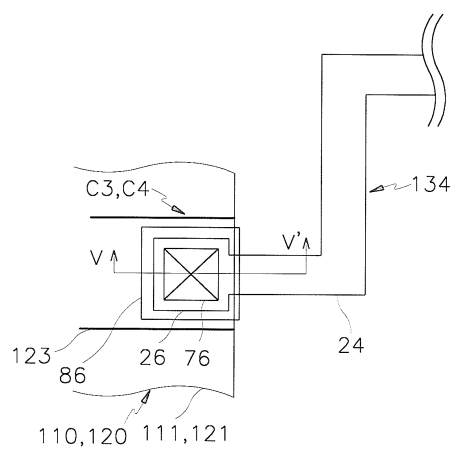
가 , 2 2 2



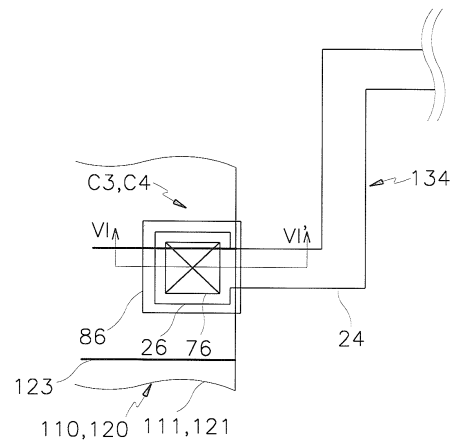
2



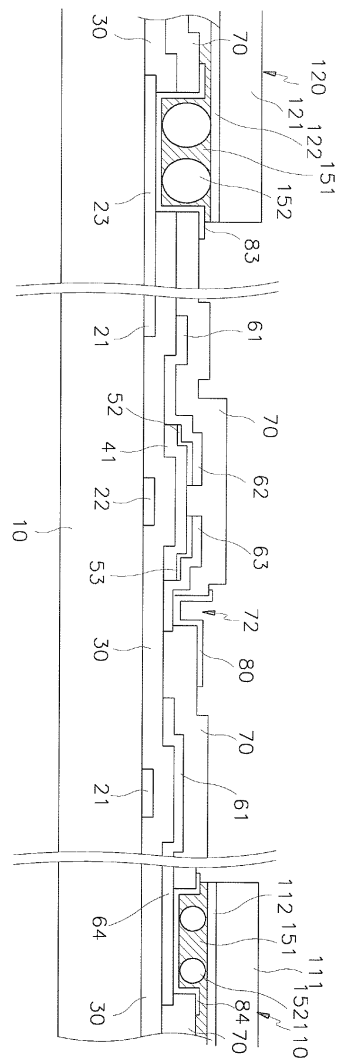
3



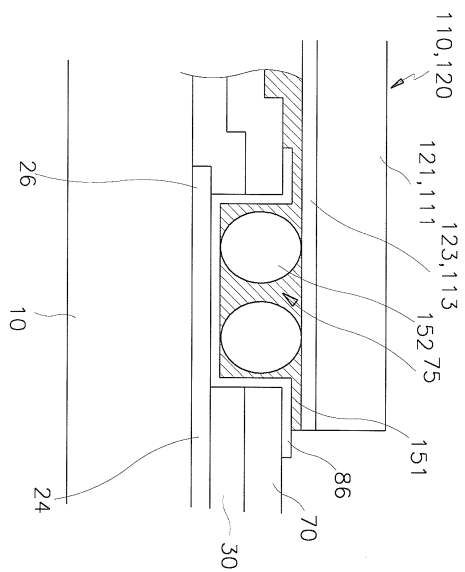
4



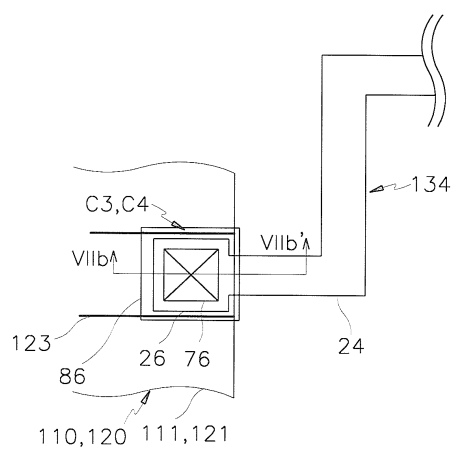
5



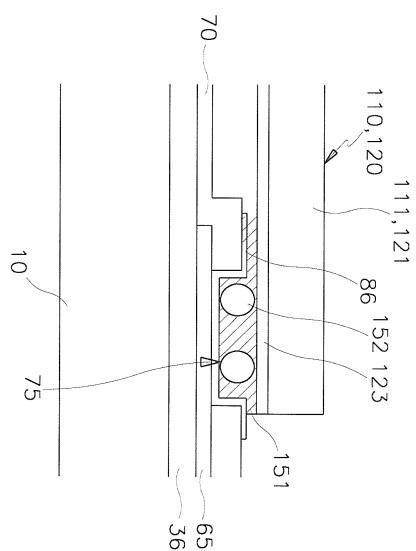
6



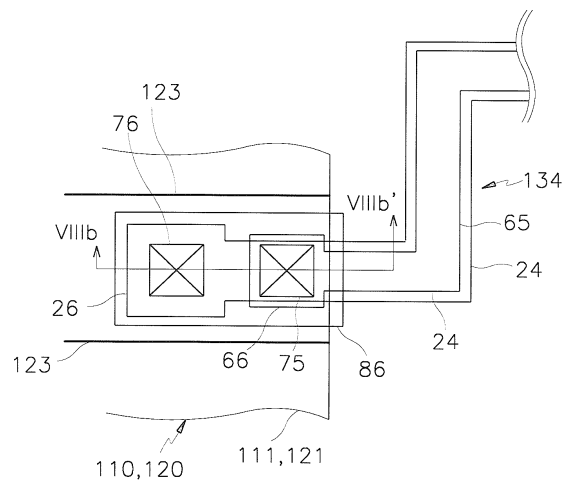
7a



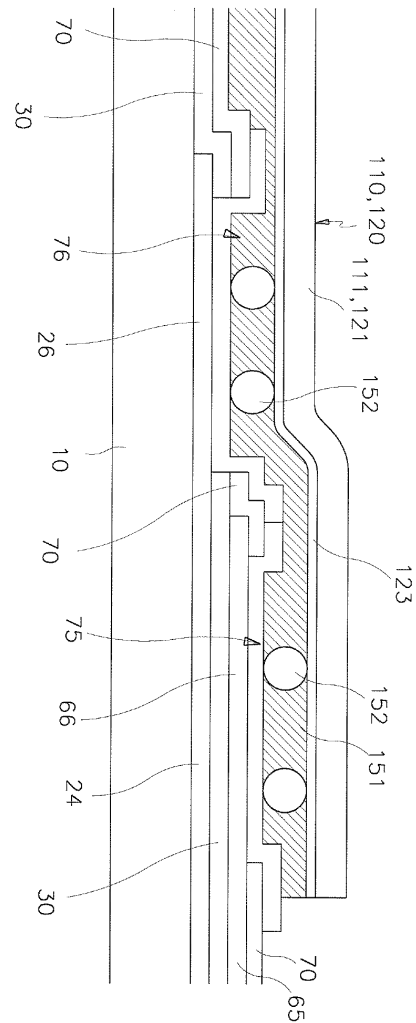
7b



8a



8b



专利名称(译)	液晶显示器		
公开(公告)号	KR1020020010215A	公开(公告)日	2002-02-04
申请号	KR1020000043508	申请日	2000-07-27
[标]申请(专利权)人(译)	三星电子株式会社		
申请(专利权)人(译)	三星电子有限公司		
当前申请(专利权)人(译)	三星电子有限公司		
[标]发明人	KIM DONGGYU 김동규 KIM SANGSOO 김상수 LEE SANGWOOK 이상욱		
发明人	김동규 김상수 이상욱		
IPC分类号	G02F1/1362 G02F1/1333 G02F1/136 G09F9/30 G02F1/1345 G02F1/13 G02F1/1343		
CPC分类号	G02F1/13452 G02F1/136286 G02F1/13458 G02F1/1345		
代理人(译)	您是我的专利和法律公司 KIM , WON GUN		
其他公开文献	KR100385082B1		
外部链接	Espacenet		

摘要(译)

和栅极线并限定在所述衬底的顶部上的像素的数据线，形成在用于栅极的边缘角的发射电信号外面设置像素区域的显示区域和分别连接到栅极信号连接线两端和栅极信号连接器形成用于栅极信号的连接配线，包括用于第一和第二栅极信号的连接焊盘。在基板上形成保护膜和栅极绝缘膜，该栅极绝缘膜具有用于暴露第一和第二栅极信号的连接焊盘的接触孔。其通过根据权利要求1的接触孔连接到所述基板的第一和第二栅极线和数据信号传输膜，连接焊盘第二栅极信号被耦合到所述第一和第二栅极上的门，包括一个信号导联信号的第一即并且形成第二布线。此时，第一或第二栅极信号引线在引线的纵向上完全覆盖第一或第二接触孔。

3 - 1 - 指数方面 焊盘部分，ACF，ITO，IZO

