

(19)
(12)

(KR)
(A)

(51) 。 Int. Cl.7
G02F 1/133

(11)
(43)

10-2004-0012869
2004 02 11

(21) 10-2003-7015570

(22) 2003 11 28

2003 11 28

(86) PCT/JP2002/005315

(87)

WO 2002/97523

(86) 2002 05 30

(87)

2002 12 05

(30) JP-P-2001-00163996 2001 05 31

(JP)

(71) 가 가 가 1006
가 가 가

(72) 19-401

가 가 710-202

가 가 가 9-14-302

(74)

:

(54)

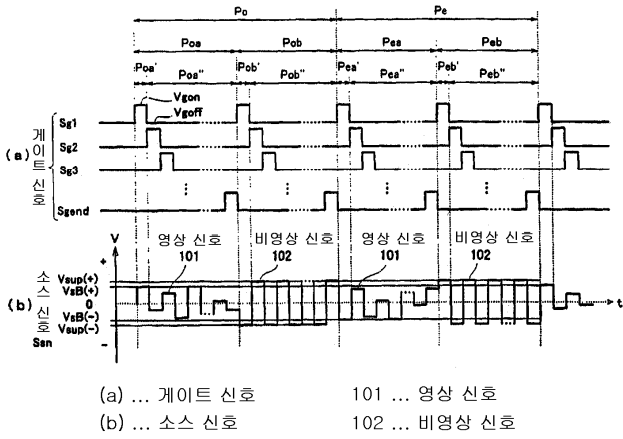
, 가 , 1

,

,

,

.



(TFT : Thin Film Transistor)

가
가

가

가

7-84254

가

가

가

가

가 가 가 ()

가

11-109921

(blur)

12

12(a)

12(b)

12(a), 12(b)
가

가 (ON) Sg1 Sgend

Vgon

Ssn 가 Ssn
가 가

Ssn

가

1 Po, Pe 2
(101)가 , 2 Ssn Vgon 가 , 1 Ssn
(102) (102)가

Po 2

Vgon 가 (102) , Pe 1 Vg
on 가 (101) 가 (101) 가 (

가 Ssn

_____ , 1

1

2

가 , 1

가

, 1

가 , 1

가 , 1 4

, 4

3(a), (b) 1 , 3(b) , 3(a)

4(a), 4(b) , 4(a) 1 , 4(b)

5 가 ,

6(a), 6(b) 2 , 6(a) , 6(b) ,

7(a), 7(b) 3 , 7(a) , 7(b) ,

8(a), 8(b) 4 , 8(a) , 8(b) ,

9(a), 9(b) 5 , 9(a) , 9(b) ,

10(a), 10(b) 6 , 10(a) , 10(b) ,

11(a), 11(b) 7 , 11(a) , 11(b) ,

12 , 12(a) , 12(b) ,

13 .

(1)

1 | .

1 (8) , (100) , (1) , (4) , (6) ,

(1) , (1) , TFT (,) , () .

, TFT (202) ((,) ,) ,

(1) ((202)) (3) (5) (202) (2)

(3) 가 (203) , (5) (202) , (20

3) , TFT (2) , (7a) (5) (7a) (20

(7) C1c , Cst . (201)

(8) , (4) (6) Ss1 Ssend , (6) Sg1 Sgend

(4) (4) . (4) ,

(3) , (3) Sg1 Sgend (2) (203) ,
 (6) , (5) (5) Ss1 Ssend ,
 (2) (2) (203) (201) Ss1 Ssend ,
 Ss1 Ssend 가 , (1) Ss1 Ss
 end 가 ,
 (4) (6) 2(a), 2(b) ,
 , 2(a) , 2(b)
 1 2(a), 2(b) , (6) , 2(b) (5) 2(b) Ss1 Ssend , Ss1
 Ssend Ssn , Ssn 가 Ssn ,
 Po, Pe , 1 Po (2) Pe 1 Poa , 가
 Ssn , 1 Poa가 (101) , 2 Pob가 (102) ,
 , 1 Poa 2 Pob , 1 (2) ,
 n , (, Poa', Pob') Poa', Pob' , Ss
 Ssn , (1) , Poa', Pob'
 (102) Po, Pe (101) 1 Poa
 (Pob) (Pea)
 , VsB(+), VsB(-) , Vsup(+), Vsup(-)
 (4) , Sg1 Sgend (, H) Vgon, (,
 , L) Vgoff 2 (2) Poa', Pob'
 , Pea', Peb' H Poa', Pob', Pea', Peb' L Sg
 1 Sgend , 1 Po, Pe , 1 Poa, Pea 2 Pob, Peb 1 ,
 2 H , Sg1 Sgend가 (2) (203)가, (2)
 , Poa', Pob', Pea', Peb' (102)가 (2)
 Ss1 Ssend (101) (102)가
 (,) 1 5(a), 5(b)
 3(a), 3(b) , 3(a) , 4(a), 4(b) 가
 , 3(b) , 4(a)
 , 4(b)
 , 5 가
 Vgoff -10V , Ssn H Vgon 15V, L
 Vsup(+), Vsup(-) , Ssn (201) Vsup(+), Vsup(-) VsW(
 +), VsW(-)가 +1V, -1V, 1 +6V, -6V, Po, Pe가 16.6ms(60Hz)가 +5V, -5V, VsW(
 (2) , 1 (2) ,
 1 5(a),(b) , (1) (2) , Ssn ,
 3(a) (101)가 Po 1 Poa (2) Poa' , Ssn ,
 , (前) (102) Vsup(+) +6V (2) Vsup(+) +5V
 (102)가 Poa' (102) , 2 Pob Vsup(+) +5V
 +5V (102) , (101) Pob' , (202)
 Vsup(-) -6V , Pob'

Pe 1 Poa Pea' Ssn
 (101)가 (2) , , (102) VsW(-) -5V
 (202) Pea' , , 2 -6V Peb' (202)
 (102)가 (102) Vsup(+) +6V Peb' (202)
 -5V (102) , , Peb'()
 (101) , (2) (102)가 , 1V
 (101) , ,
 , 13 Sg1 Sgend Ssn
 Pe (102) , 13 Po (101)
 가 11V (202)
 , , (101) (102) , 11V (102) , ,
 가 3(a) , 가 (202) 가
 , , 2 , ,
 , (1) (2)가 , 3(b)
 Po 1 Poa Poa' Ssn (101)가
 VsW(+) +1V (202) Vsup(+) +6V
 (102) Pob' (102)가 , (202) +1V Pob'
 Vsup(-) -6V Pe 1 Pea Pea' Ssn (101)가
 (202) 2 -6V Peb' VsW(-) -1V Pea'
 (202) -5V (102) Vsup(+) +6V (102)가 Peb'
 () , , (1
 02) (101) 5V , ,
 , , 가 ,
 , , 가, 7V(4(b)) 가 5V
 , 3(a), (b) , (2) Ssn , 가 (203)가
 가 (203)
 , , 4(a), 4(b)
 , 4(a)
 , 4(b)
 4(b) Po (102)가 , (4(b) Pe) (4(b)
 (101) , 가 . Po) , (102)가 , ()
 4(a) Pe) (4(a) (101) Po) , 가 .

11 , , 가 , (102)가 5 (101) 5 , , 5 , 2
 , , 212
 , 5 가 , 1 ,
 2 , .

가 가 가
 , (101) (202) 가 (202) 가 가
 (101) Pe, Po 가 Vsup (102) 가
 , Vsup ,
 , 1 가 ,
 , 1 가 ,
 가 , , , ,

(2)
 6(a), 6(b) , 2
 a), 6(b) 6(a) , 6(b) . 6(
 2(a), 2(b)
 6(a), (b) , 1 , Ssn (101)
 1 Po, Pe , 1 가 (102) 1 Po, Pe
 Ssn , (101) Poa, Pea Ssn 가 (102) Pob, Peb
 , (5) , Ssn (6)

(3)
 7(a), 7(b) , 3
 7(a) , 7(b) . 7(a),
 7(b) 2(a), 2(b)
 7(a), 7(b) , 1 , 1 Po, Pe
 (101) Poa', Pea' 2 , 1 가 Poa', Pea' ,
 (101)가 , 1 가 . (101)

(4)
 8(a), 8(b) , 4

8(b) 8(a), 2(a), 2(b) 8(b) 8(a),

8(a), 8(b) 1 Po, Pe (101)
 (102) Poa', Pea', Pob', Peb'가 2 (101)
 (102) 가, 1 2
 Poa', Pea' (101)가 1

(101) 3 (101) 3 (101)

(5)

9(a), 9(b) 5 9(a), 9(a),
 9(b) 2(a), 2(b) 9(b) 9(a),

(, R), (, G), (, B) 가 ()
 (4), (6)가 1 R, G, B 1 (8),
 1 가 1

1 9(a), 9(b) 1, 2, 3 (Poa, Pea), (Pob, Peb), (Poc, Pec) 1, 2
 3 (Poa, Pea), (Pob, Peb), (Poc, Pec) , R (, R)(10
 1R), G (, G)(101G), B (, B)(101
 B) Poa', Pob', Poc' , R (101R) , G
 (101G) , B (101B) Pea', Peb', Pec'
 Pe , R (101R) , G (101G) , B
 (101B) (101R, 101G, 101B) ,
 Poa, Pob, Poc, Pea, Peb, Pec 2 Poa, Pob, P
 oc, Pea, Peb, Pec

(101R, 101G, 101B) 1 Po, Pe
 (101R, 101G, 101B) Ssn Po, Pe Ssn
 Ssn 1 , 1

(6)

10(a), 10(b) 6 10(b)
 10(a), 10(b) 9(a), 9(b)

4 5 , 1 Po, Pe 1
 (Poa, Pea), (Pob, Peb), (Poc, Pec), (Pod, Ped) 4 I 4
 (Poa, Pea), (Pob, Peb), (Poc, Pec), (Pod, Ped) , R (101R), G (101G), B
 (101B), (102) (101R, 101G, 101B) (102)
 Poa', Pob', Poc', Pod', Pea', Peb', Pec', Ped' , Poa, Po
 b, Poc, Pea, Peb, Pec (102)
 (101R) 5

, (102)가 , (102)
(101) ,

(7)

11(a), 11(b) 7
11(a), 11(b) , 11(a) , 11(b)
10(a), 10(b)

6 , (101R, 101G, 101B) (102) ,
Poa, Pob, Poc, Pea, Peb, Pec 2 Po, Pe
4 (Poc, Pod, Pea, Peb), (Pec, Ped, Poa, Pob)
(102) 가 (101R)
6

6 , ,
가 , ,
/ .

가

(57)

1. 가 , 1 ,

1 2. , ,

1 3. , ,

1 4. , , 1 .

1 5. , , , , , .

5 6. , .

1 7. 가 , 4 , 4 3 , , 3 , .

7 8. , , , 3 .

8 9. , 4 , .

8 10. , 4 , .

7 11. , .

12.

가 , 1 3 , 3 ,

, , 3 , ,

2

13.

12

14.

1, 7, 12

가

15.

가

1

16.

15

17.

15

18.

15

, 1

19.

15 18

19 20.

,

21.

가

, 1

4

, 4

, 3
,
,

, , 3

21 22.

,

3

22 23.

,

4

,

22 24.

,

4

,

21 25.

,

26.

가

, 1

3

, 3

, , 3

,
,

2

26 27.

,

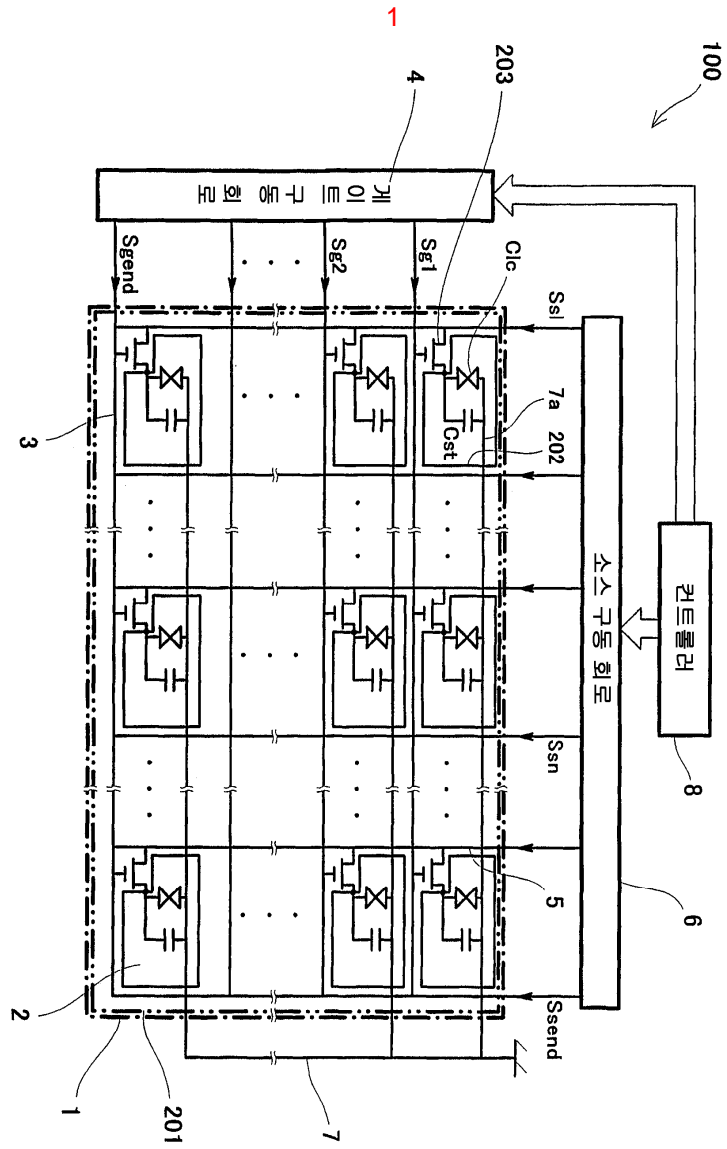
,

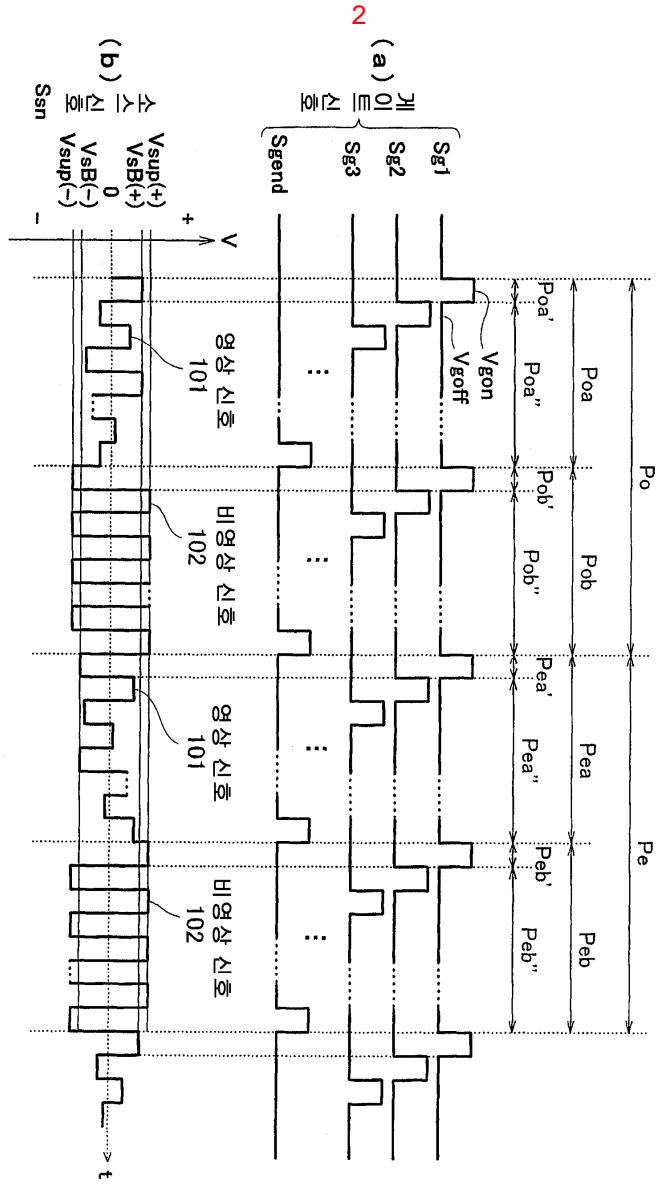
28.
15, 21, 26

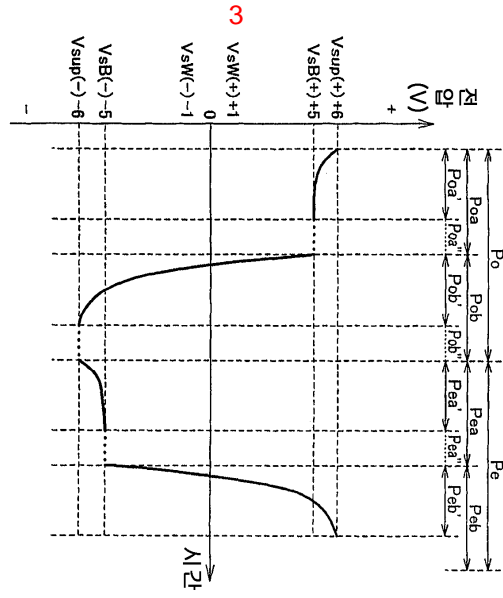
가
,

가
,

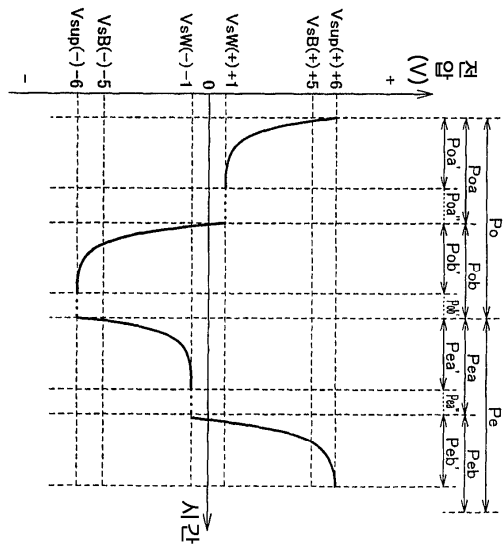
가



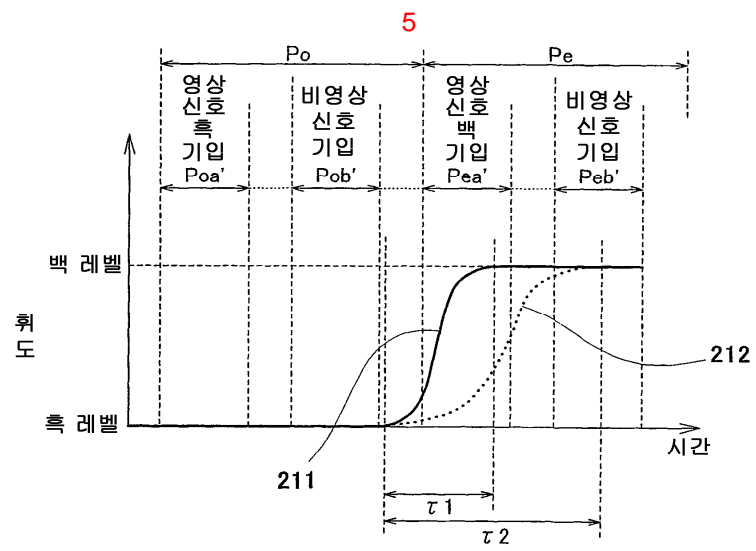
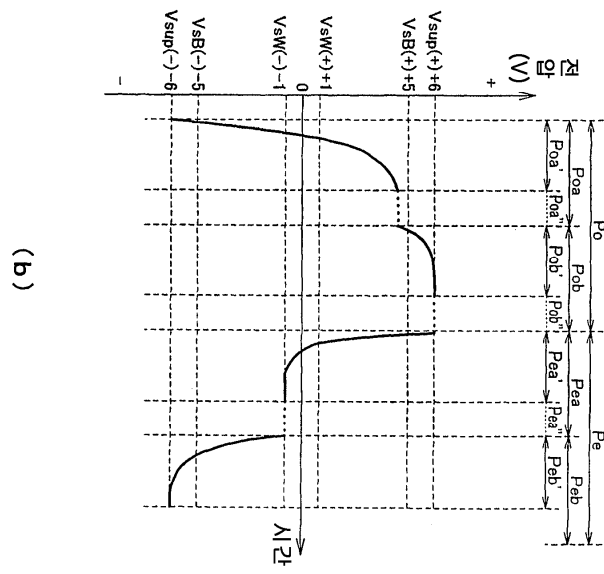
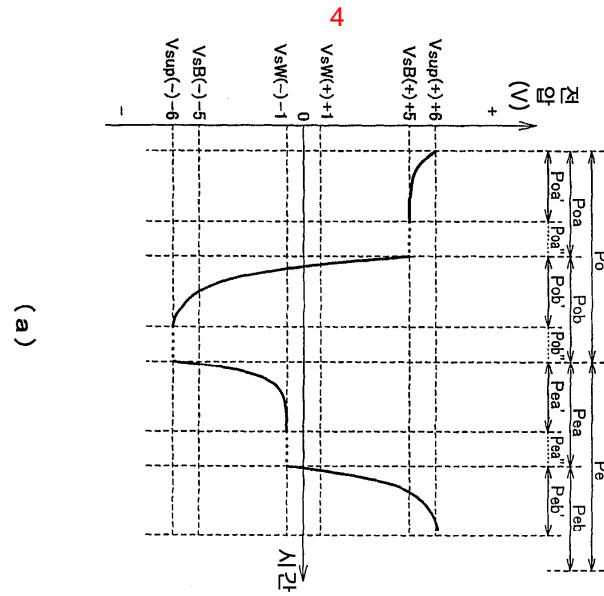


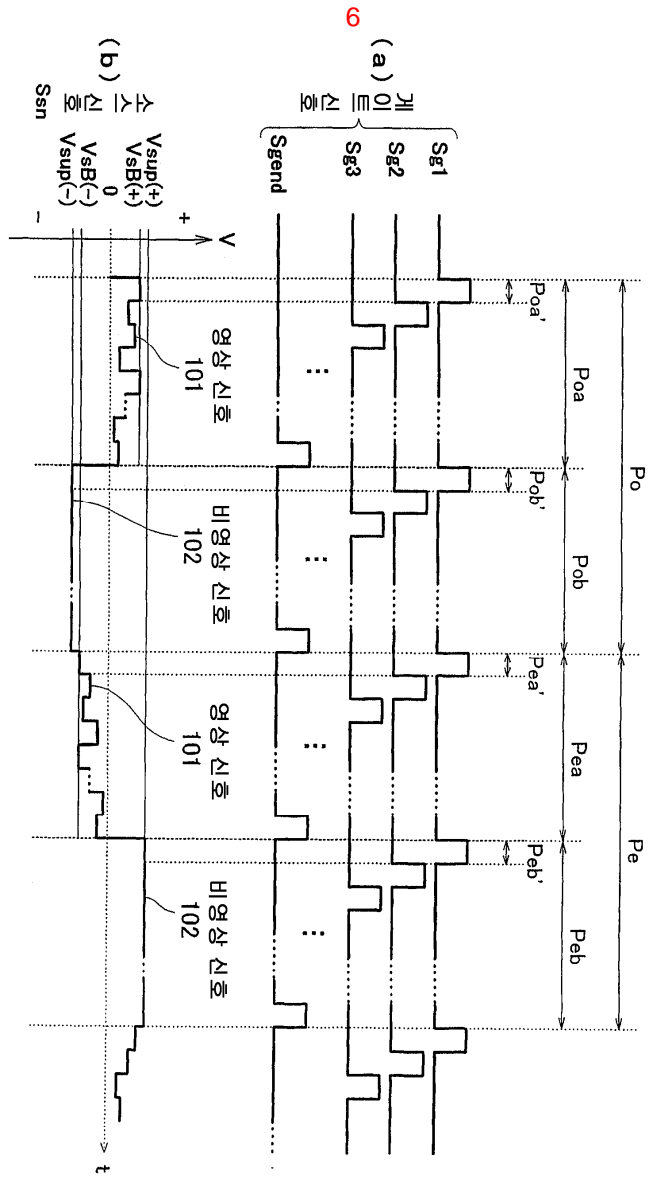


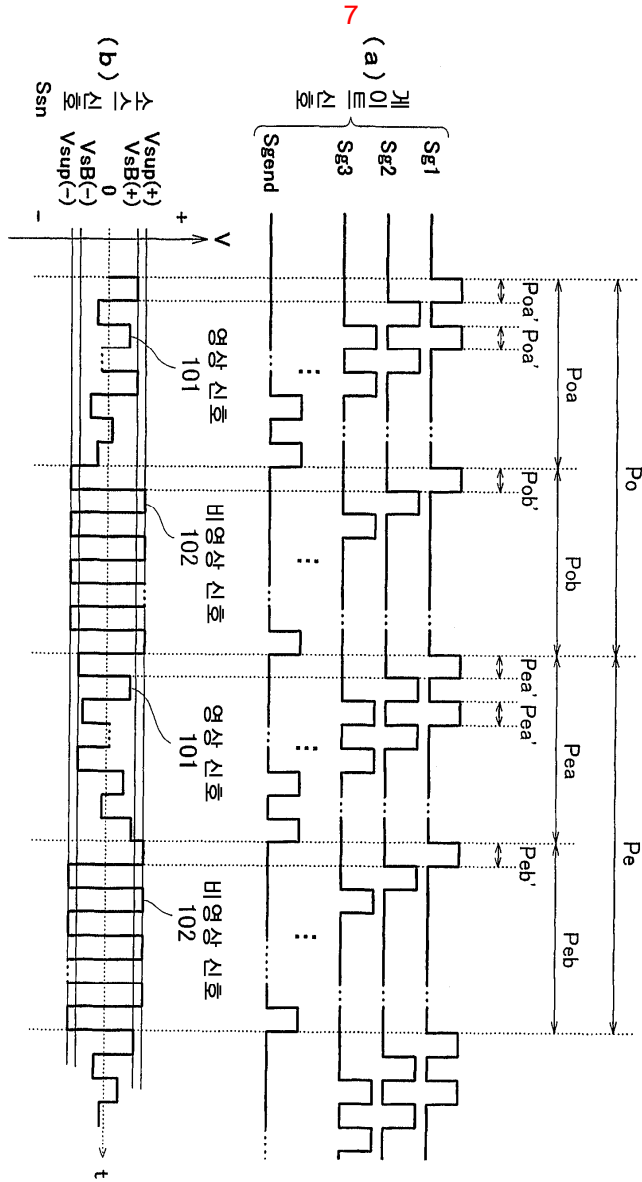
(a)

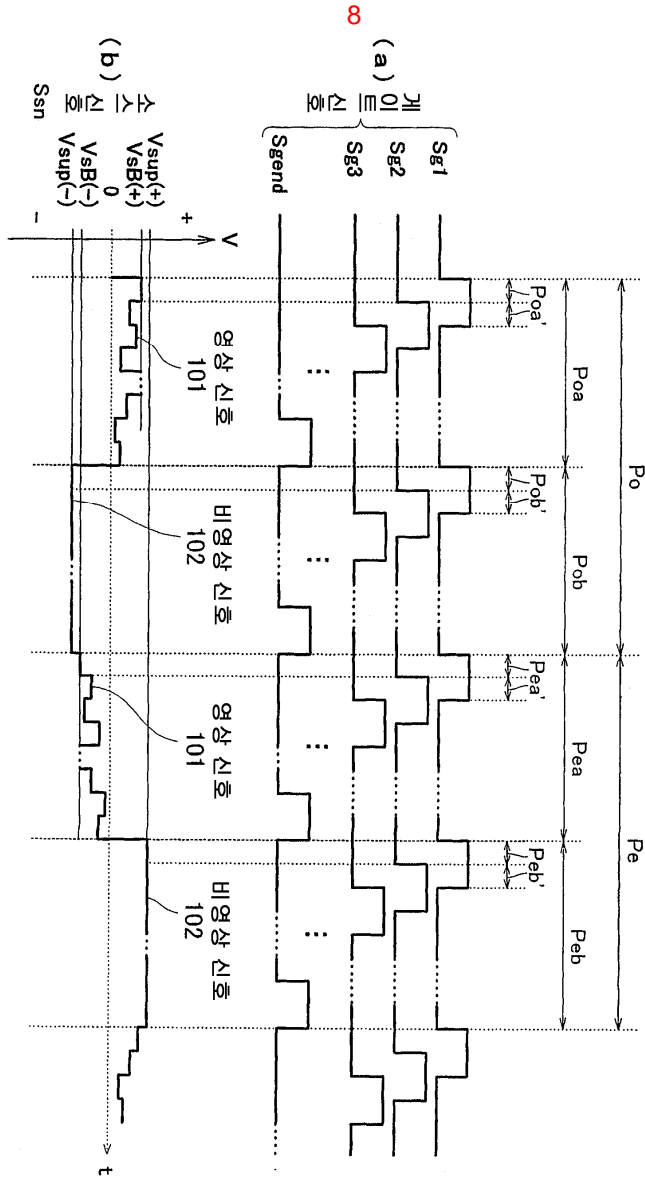


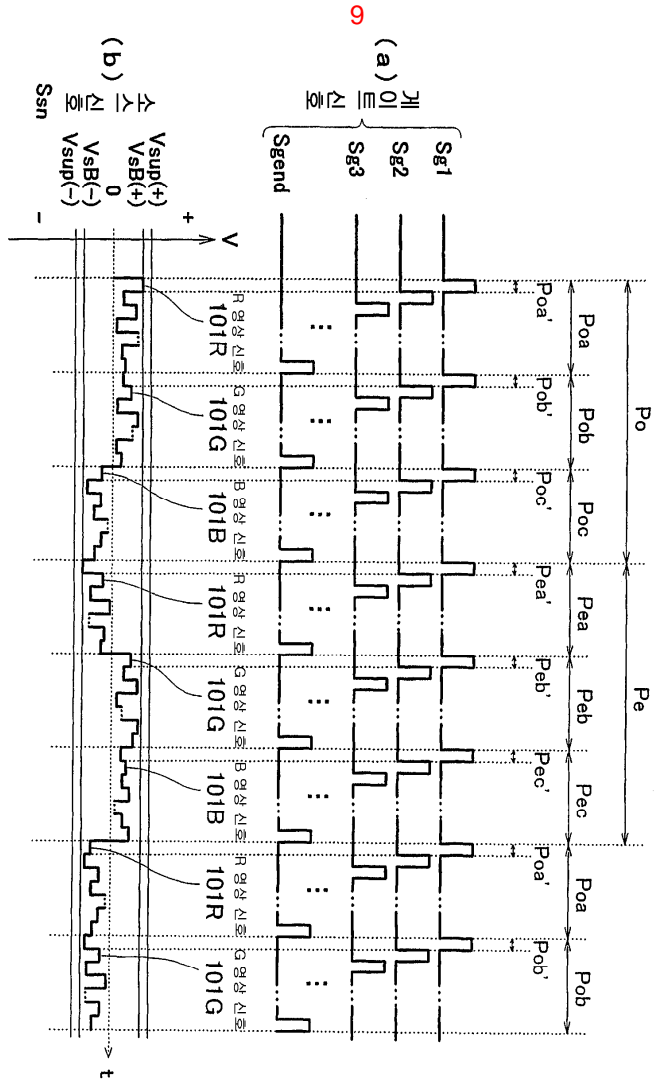
(b)

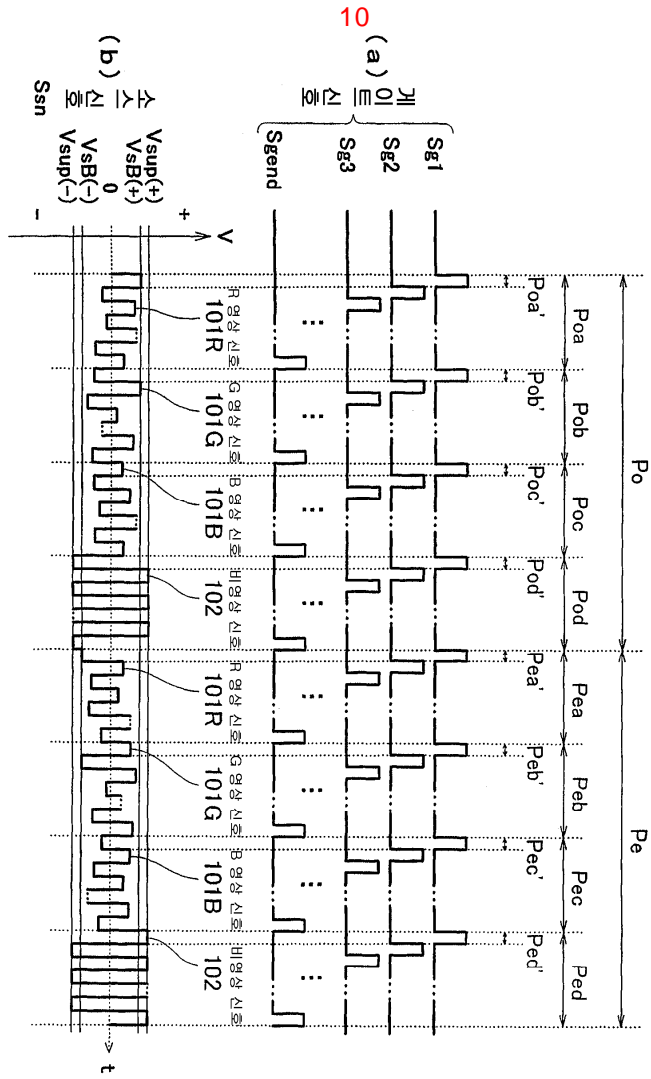


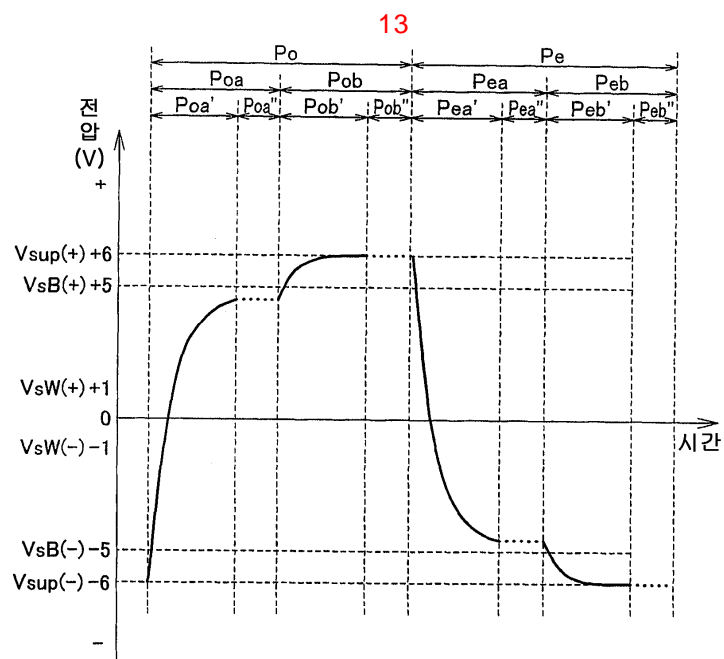
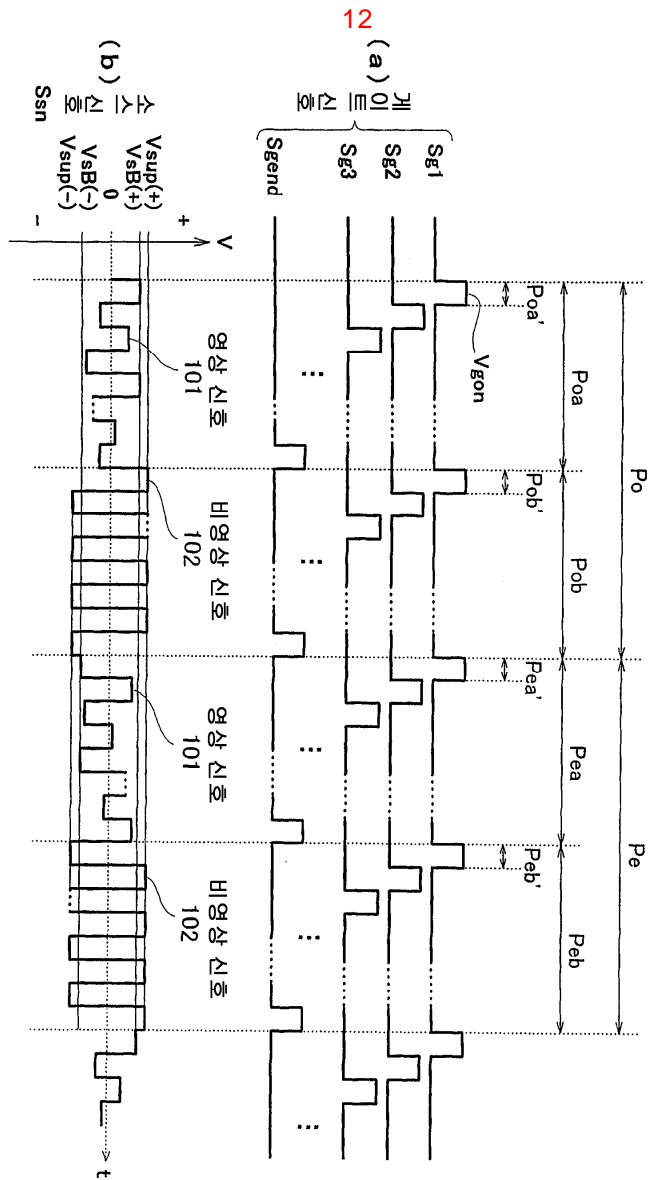












专利名称(译)	驱动液晶显示元件的方法和使用该方法的液晶显示装置		
公开(公告)号	KR1020040012869A	公开(公告)日	2004-02-11
申请号	KR1020037015570	申请日	2002-05-30
申请(专利权)人(译)	可否让我这个小粉丝展示中心		
[标]发明人	KIMURA MASANORI 기무라마사노리 SATO ICHIRO 사토이치로 KUMAGAWA KATSUHIKO 구마가와가츠히코		
发明人	기무라마사노리 사토이치로 구마가와가츠히코		
IPC分类号	G02F1/133 G09G3/36		
CPC分类号	G09G3/3614 G09G3/3648 G09G3/3677 G09G2300/0491 G09G2310/0205 G09G2310/0235 G09G2310/0251 G09G2310/06 G09G2310/061 G09G2320/0252 G09G2320/0257 G09G2320/0261		
代理人(译)	Gimchangse		
优先权	2001163996 2001-05-31 JP		
其他公开文献	KR100852036B1		
外部链接	Espacenet		

摘要(译)

使用液晶显示元件驱动方法或液晶显示器，其中使用其中提供多个像素的液晶显示元件，通过将一个帧周期划分为多个写周期，在各个写周期期间逐个选择像素。并且输出栅极信号，产生包含分配给写周期的视频和非视频信号的源信号，对应于所选像素的源信号被反转，反转的源信号被写入所选择的像素，透射率为根据写入的源信号控制所选像素的液晶，从而根据源信号的图像显示在液晶显示元件的屏幕上。与下一个要写入的视频信号具有相同极性的非视频信号被写入像素。

©KIPO & WIPO 2007

