

(19)  
(12)

(KR)  
(A)

(51) 。 Int. Cl. <sup>7</sup>  
G09G 3/36

(11)  
(43)

2002 - 0055992  
2002 07 10

(21) 10 - 2000 - 0085271  
(22) 2000 12 29

(71) .  
,  
20

(72) 203 - 1005

(74)  
:

(54)

가

, 1 2  
, 1 1

가

6

1

2 1

3

4

5

6

7

8

9

10a 10b

11

12

1 : 2 :

3 :

(Television)

(Thin Film Transistor)

(Driving Integrated Circuit)가

6

1 , (3)

6

(2:Multiplexer Block; " MUXB" )

(1)

(1) (DL1 DLn) (2) (1) 가  
 2 (2) 6 , (1) 가  
 (3) .

2 (1) (DL1 DLn) 6 (Multiplexer; " MUX" )  
 .

MUX (1) (DL1 DLn) MUX 3  
 가 MUX가 (1) MUX 3  
 (3) 가 (Gate) 가 (Off) (3)  
 가 3 6 MUX .

3 , 1 1 1 2 1 2  
 , 2 3 4 4 3  
 , 3 5 6 5 6  
 , 1 , 2 3 .

, MUX .

MUX MUX 가 가 가 (Gate)  
 가 (Off) 가 가 , (3) 가  
 . 4 (3) 가

4 , 1 6 가  
 가 . 5 가

5 , 1 6 가  
 가 . 6 MUX 가  
 MUX1 MUX2 , MUX3 MUX4 , MUX5 MUX6

가 .

, MUX5 MUX6 MUX  
 , MUX5 MUX6 (holding) (MUX turn\_on Gate\_ 가  
 off) MUX .

, 가 .

가 , 1

, 1 2  
 1 가 , 1 2 1  
 3 2 , 2  
 4 4 1 , 3  
 4 , 1

, 6 12  
 6 MUX

6 , 1 1 2 1 2  
 , 3 2 3 4 4 3  
 , 2 , 3 5 6 5 6 3  
 , 1 4 2 , 6 5 , 3  
 , 1 , 2 3

7 , MUX (1) (DL1 DLn) MUX  
 6 가 MUX가 가 (1)  
 (3) 가 가 (Off)

, 8

8 가 1 6  
 2 가 9 가

9 , 1 6 가 , , 1

, 6 MUX MUX 가  
 가 10a 10b

10a 10b MUX

10a 가 가 , 10b  
 가

11 .  
 11 , 1 1 2 1  
 2 , 3 5 6 3 4 4 5 6 3  
 2 2 1 , 3  
 4 , 6 5  
 3 2 , 4  
 1 , 1 , 2 3  
 , 4

12 MUX ,  
 MUX 4(2)  
 (Averaging)

11 4  
 , 가 6 MUX (MUX1 MUX2, MUX3 MUX4, MUX5 MUX6)  
 (Averaging) 가

가  
 가

(57)

1.  
 가 ,  
 1 ,  
 1 2  
 1 1

2.

1 ,  
 1 1 1 2 1 2  
 ,  
 2 3 4 4 3 ,  
 3 5 6 5 6

3.

2 ,  
 1 , 2 3 .

4.

2 ,  
 2 2 1 ,  
 3 4 ,  
 6 5

5.

4 ,  
 1 , 2 3 .

6.

,  
 가 ,  
 1 ,  
 1 2 1  
 ,  
 2 3 2 ,

3 4 1  
,

1 4  
.

7.

6 ,

1 1 1 2 1 2  
,

2 3 4 4 3 ,

3 5 6 5 6  
.

8.

7 ,

1 , 2 3 .

9.

7 ,

2 2 1 ,

3 4 ,

6 5  
.

10.

9 ,

1 , 2 3 .

11.

9 ,

2 3 2  
,

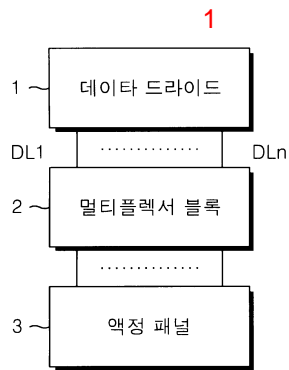
3 4 1  
.

12.

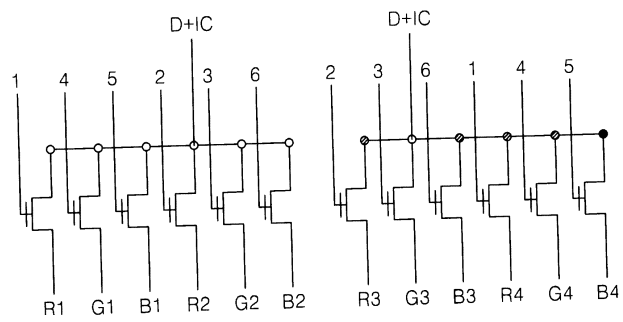
9

1 , 2

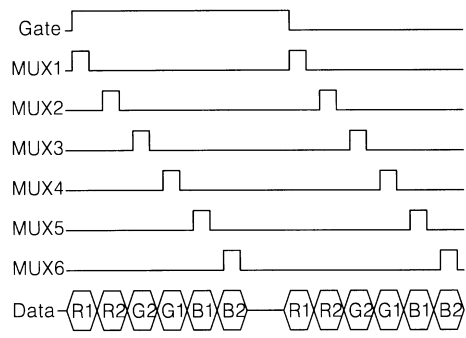
3



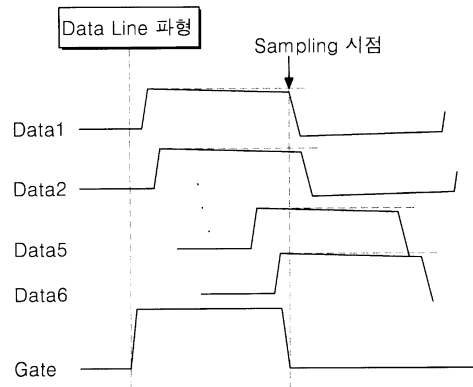
2



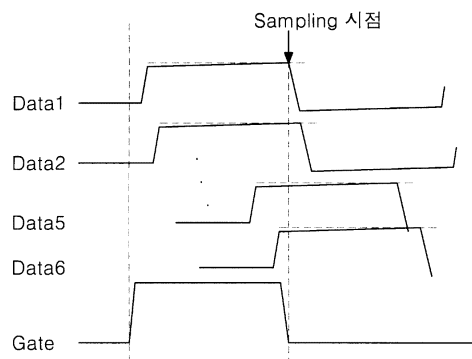
3



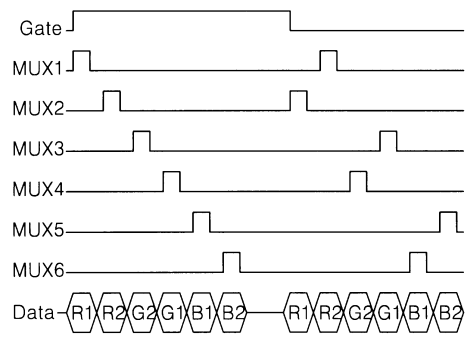
4



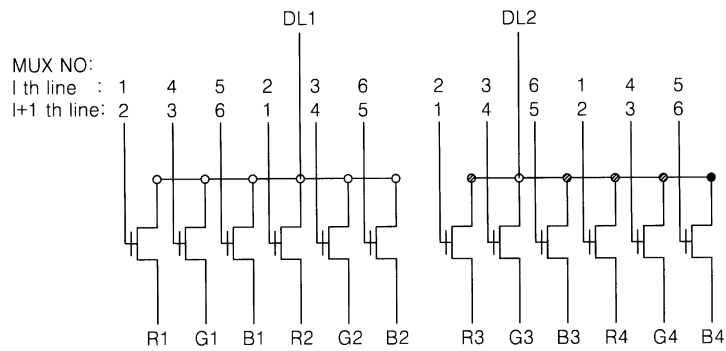
5



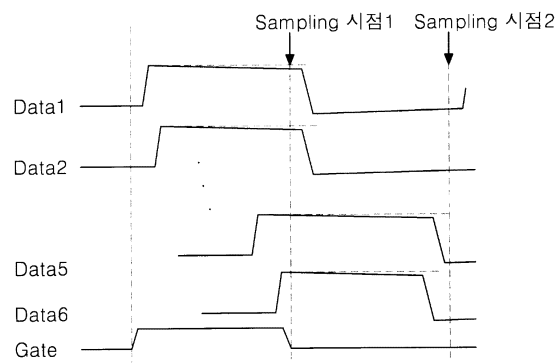
6



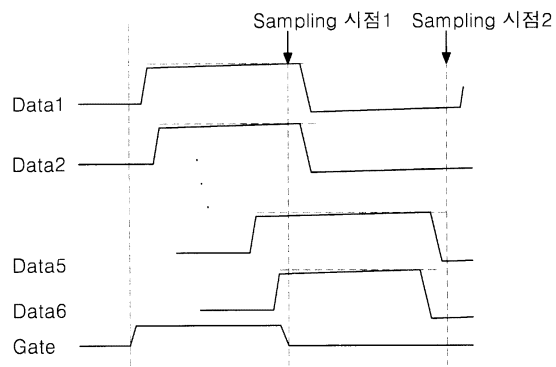
7



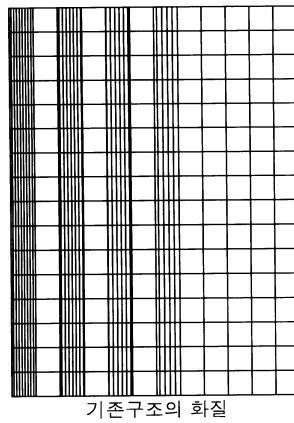
8



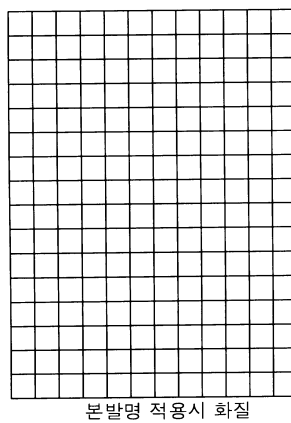
9



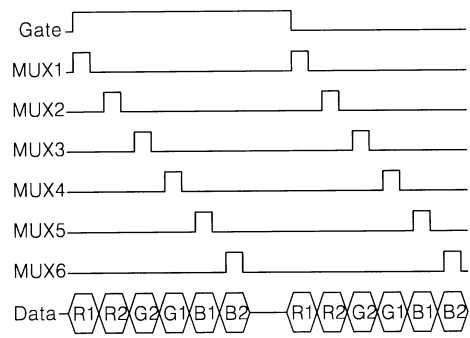
10a



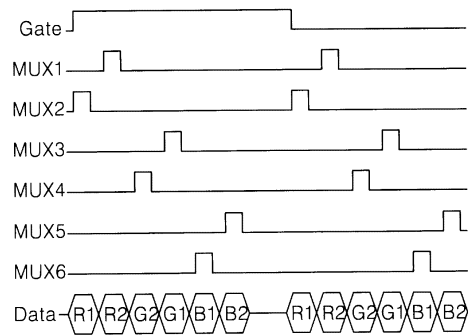
10b



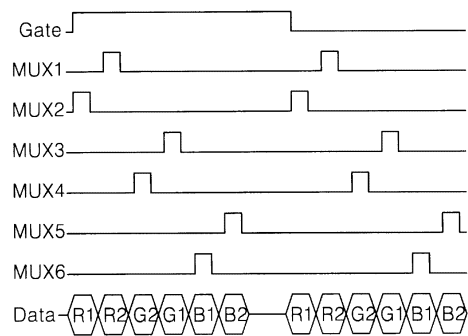
11a



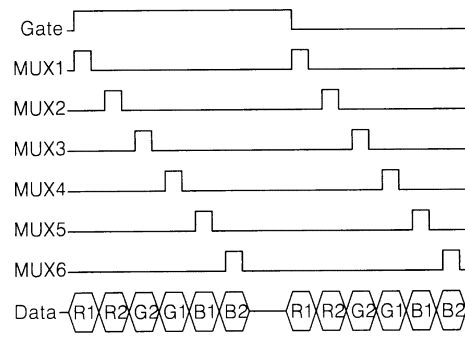
11b



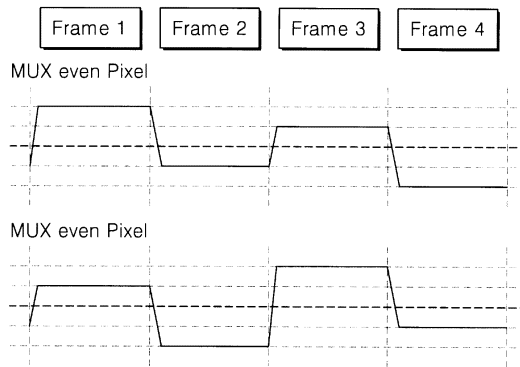
11c



11d



12



专利名称(译)	驱动液晶显示装置的方法		
公开(公告)号	<a href="#">KR1020020055992A</a>	公开(公告)日	2002-07-10
申请号	KR1020000085271	申请日	2000-12-29
[标]申请(专利权)人(译)	乐金显示有限公司		
申请(专利权)人(译)	LG显示器有限公司		
当前申请(专利权)人(译)	LG显示器有限公司		
[标]发明人	YEO JUCHEON		
发明人	YEO,JUCHEON		
IPC分类号	G09G3/36 G09G3/20 G02F1/133		
CPC分类号	G09G3/3648 G09G2320/02 G09G2310/0297		
代理人(译)	KIM , YOUNG HO		
其他公开文献	KR100675320B1		
外部链接	<a href="#">Espacenet</a>		

摘要(译)

目的：提供一种用于驱动LCD装置的方法，以通过使用多路复用方法来改善均匀性。

