

(19)  
(12)

(KR)  
(B1)

(51) 。 Int. Cl.7  
G02F 1/136

(45)  
(11)  
(24)

2004 04 28  
10-0429369  
2004 04 16

(21) 10-2000-0057758  
(22) 2000 09 30

(65)  
(43)

10-2001-0030551  
2001 04 16

(30) 11-279517 1999 09 30 (JP)

(73) 가 가 5 7 1

(72) 5 7 1 가 가

(74)

:

(54)

,

,

2

1  
2  
3  
4

5 3 ;  
 6 1 ;  
 7 2 ;  
 8 3 ;  
 9 ;  
 10 .

200 : 201 :  
 202 : 203 : (TFT)  
 204 : 205 :  
 206 : 207 :  
 208 : 209 :  
 210 : 211 :  
 212 : 216 :

1 (100) , (100) (101), (102),  
 (TFTs, 103), ( ( ), ( ( ),  
 (104), (105), (106), (107), (108), (109)  
 (110) , , , 1 , (100)  
 (101) , (102) WSi( ) (102) TFT(I03)  
 TFT(I03) (111) (102) ( )  
 (104) , ( ) , TFT(103)  
 ( ) , TFT(I03)  
 (104) , (112)  
 TFT(103) (104) ,  
 TFT(103)  
 (105) (113) (104) ,  
 (104) (106)  
 , (105) (106)  
 , TFT(I03) (Indium Tin Oxide; ITO)  
 , (104) , 가  
 (107) ( ) TFT(I03)  
 (110) (106) ( )  
 ) (gap) (109) ITO , (110)  
 (108) (106) (110)  
 , 가 (107) (109) (108) 가 .

( ) (100) (102) , (104) TFT(I03) , (105) (100) ( ) , (100) , (100) , (100) , 가 (100) (104) TFT (I03) , T FT (I03) (108) (107) 가 (103) / T (100) (100) , (108) TFT (I03) (crosstalk) , (104) (100) , (104) TFT(I03) (105) , (105) 가 (104) 가 (105) (Lightly Doped Drain-Source, LDD) ( ) TFT(I03) (100) , 가 (105) TFT(I03) (100) , (102) (101) , TFT(I03) 가 (104) (105) (105) , (105) ) , 1 , (105) (105) TFT(I03) , TFT(I03) 가 가 , TFT(I03) 가 (106) (104) (100) , (102) , WSi (102) TFT(I03) 가 , 4) (101) (102) TFT(I03) , 가, TFT(I03) (105) , (10

가 ,  
가 ,

가

가

가

가

; 2 1 1 ; 2

1

가

3 ; 4 3 ; 4

가

2

(200)가

(200), (202), (TFT, 203), (100)가 (200)가  
01), (205), (211), (206), (207), (208), (204), (209), (210), (215), (207), (216), (200), (202)  
(201), (215), (100), (207), (201), (202), (221), WSi, (221)  
(221), (201), (202), 150nm, (215), (201), (202), a-Si, (202), TFT (203), (20)

2) (215), 50nm, (215), (202), TFT(203), (222), (215), (204), (204), (205), (206), (204), (205), (206)

23) TFT(203), (205), TFT(203), (204), (204), (206), (224), TFT(203), (204), (204), (206), (225), (226), TFT(203), (223), LDD, (206), (227), TFT(203)

Ti (216), (228), (204), (207), (207), (216), (207), (204), (207), (204), (207), (207), (207), (207), (208), (209), (208), (207), ITO, (208), (229), TFT(203), (208), (211), ITO, (212), (212), (210), (208), (211), ITO, (212), (212), (212), 가

T(203) (209), (211), (210), 가 (208), (208), (204), (204), (205), TF, (200), (202), (207), (216)

(300), 4, (200), (301), (301), (301), (300), 가, (301), 가, (301), (301), (302), (half mirrio)

(302) R, G, B( , , ) ( )가 (200R, 200G 200B)  
 R, G, B (200R, 200G 200B)  
 ) 5 R, G, B (200R, 200G 200B)  
 (303)가 (303) (304) ( )  
 304) (305) (303) (304) (305) ( )  
 ) 가 TFT(203) (200) , (100) , (210)  
 , R, G, B (200R, 200G 200B)) (300) 5  
 TFT(203) (200) (305) , LDD (227)  
 (207) TFT(203) (207)  
 , (207) (200) , 2 (207) (216) (216)  
 7) TFT(203) 가 (207) TFT(203) LDD (227) (216) (207) LDD (22)  
 (200) (207) (204) (201)  
 , (200) , (216) (207)  
 , (207) (204) 가 , (216) (202)  
 (215) (202) (215)  
 (215) (201) (216) (2)  
 15) , TFT(203) LDD (227) 가 (216) (227)  
 TFT(203) (200) , TFT(203) LDD (227) (300)  
 , 가 (200) , (215) (202) 가 , (21)  
 5) (215) (202) (207) (216) (207)  
 , (216) (207) (207) (216) (207)  
 (207) (216) (204) (207) (216) (207) (204)  
 , SiO<sub>2</sub> (200) (221) LPCVD(Low Pressure Chemical Vapor Deposition) (201) , 6a  
 (201) (221) 500nm  
 가 (221) , 150nm WSi (401) 1  
 . WSi (401) , 50nm a-Si (402)가 CVD 2  
 , a-Si (402) WSi (401) (202) (215) 6b  
 (202) , TFT(203) TFT(203)  
 (202) WSi 100nm , 160nm  
 , 500nm (202) (215) , LDD (227)  
 , TFT(203) LDD (227) 2.5μm  
 , 6c , SiO<sub>2</sub> (222) 1000nm TEOS CVD  
 (222) (202) TFT(203)  
 , 500nm , 2000nm

a-Si ( ) LPCVD (222) 75nm  
 400mJ a-Si a-Si ( )  
 1E-17 5E-17/cm<sup>3</sup>  
 SiO<sub>2</sub> (223) 1 ( ) LPCVD 10nm  
 TFT(203)  
 (403)  
 가 (223) 1 (P) 30ke  
 V 가 3E+15atoms/cm<sup>3</sup> TFT(203) (403) /  
 SiO<sub>2</sub> 2 ( ) TEOS CVD 90nm 7a  
 (uc-n + Si) 70nm (223) 2 1 (223) n +  
 , WSi 100nm LDD (227)  
 (205) (205)  
 TFT(203) (403) (226)  
 7b (223) (403) ( )  
 (206)  
 (403) (225) (224)  
 ( )  
 8a (204) , TFT(203) 500nm  
 (228) (204) (228) 50nm  
 (404) 3  
 , 300nm (405) (404) 4  
 8b (404 405)  
 (216) (207) (206)  
 (208) 1.0μm (206)  
 (229) ITO ( )  
 (209) (410)  
 ( ) (212) (210) (212)  
 (410) (200)  
 (216) (202) (215) (200) (207)  
 가  
 ( )  
 10  
 a-Si (215)  
 (215) 50nm  
 (215)  
 , 100nm  
 (216)  
 (216)  
 , 50  
 100nm가 (202) (215) (215)  
 (202) TFT(203) (216) (216)  
 (207) TFT(203) (216) (216)  
 TFT(203) LDD (227) , LDD (227) TFT(203)  
 (200) TFT(203) LDD (227)  
 가 , TFT(203) LDD (227) 가 가  
 가, 가 (200) (200)  
 (300) (200)

( )가 .

(57)

- 1.
- 2.
- 3.
- 4.
- 5.
- 6.
- 7.
- 8.
- 9.
- 10.
- 11.
- 12.
- 13.
- 14.
- 15.
- 16.

5

5  
WSi

6  
WSi

17.

5, 6, 15, 16

18.

5

1 1  
2 2  
1 1

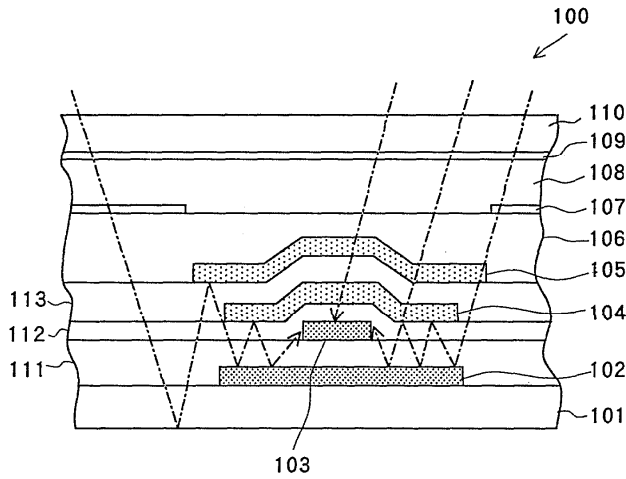
3 3  
4 4  
3 4

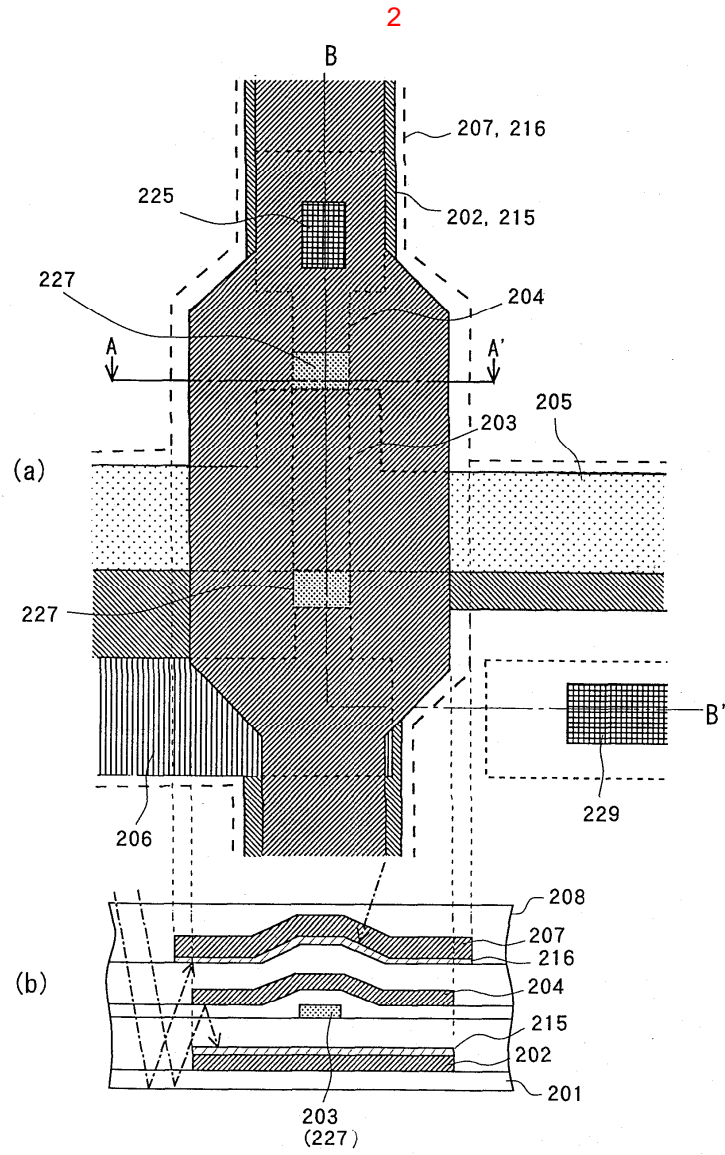
19.

15 16

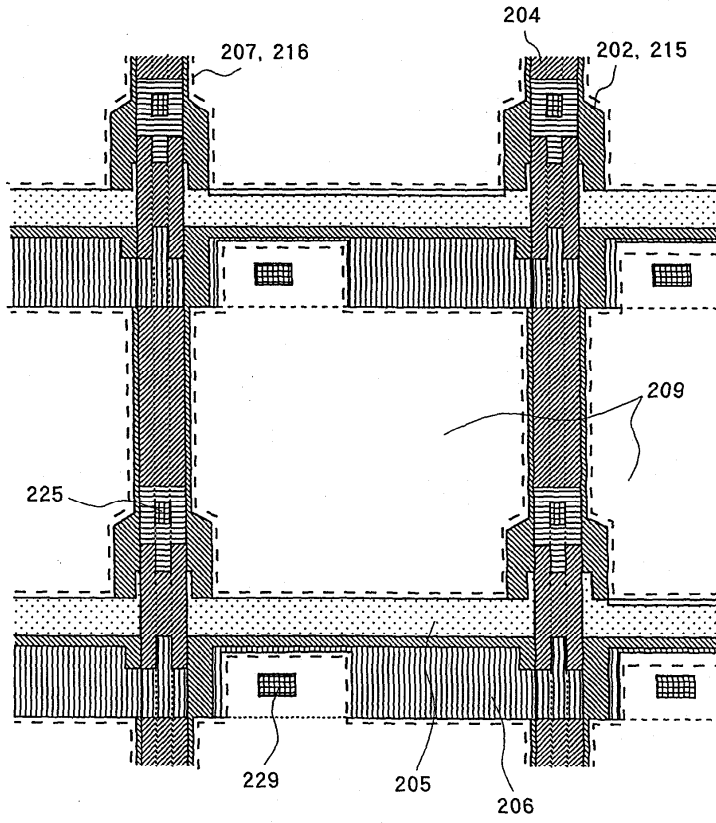
WSi  
a-Si  
WSi

1

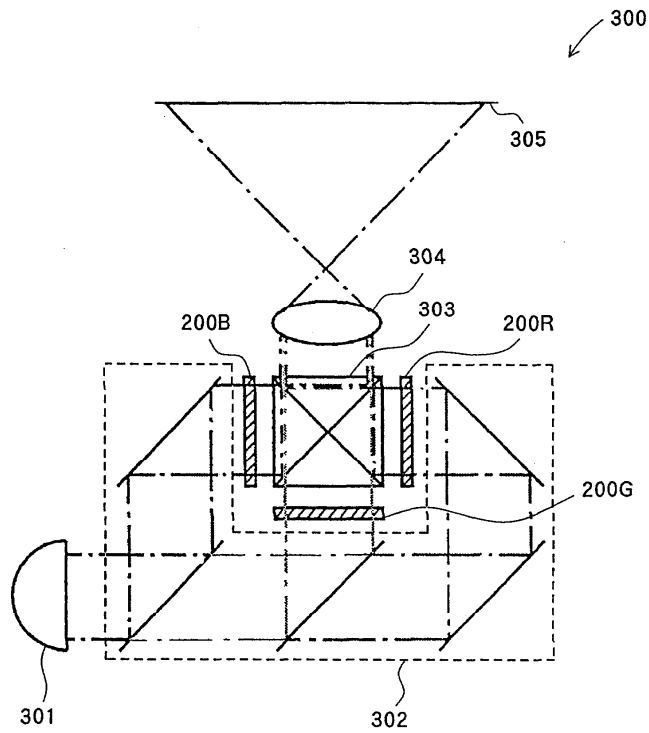


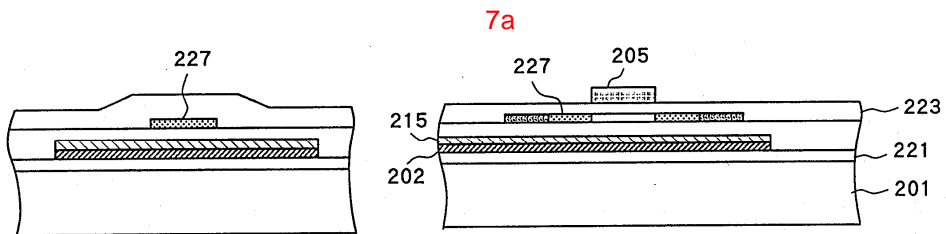
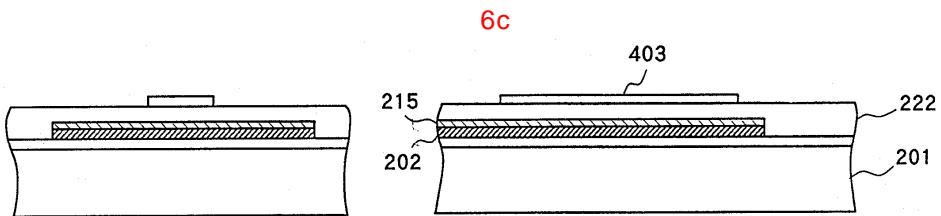
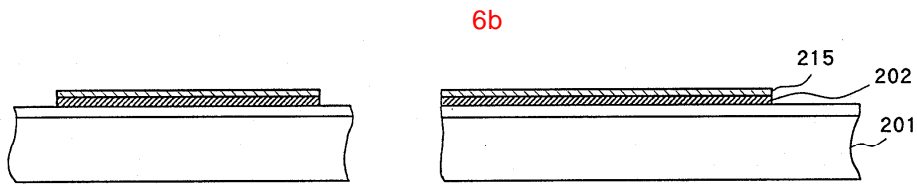
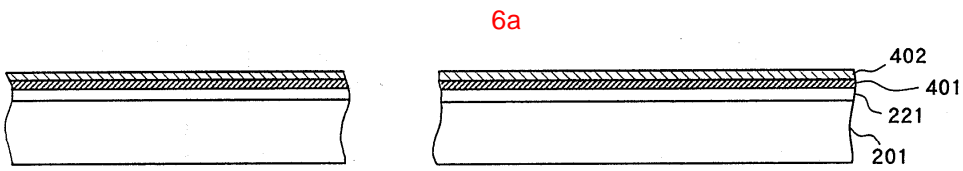
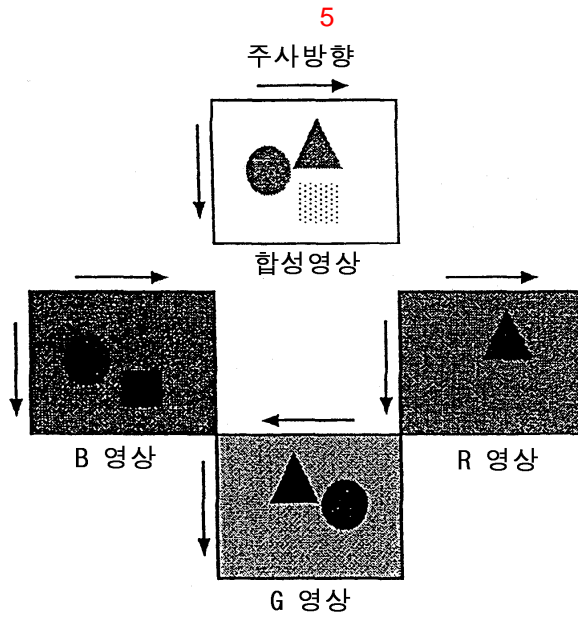


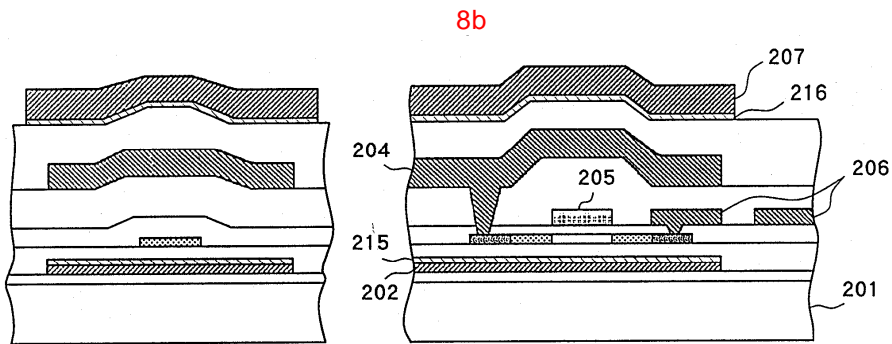
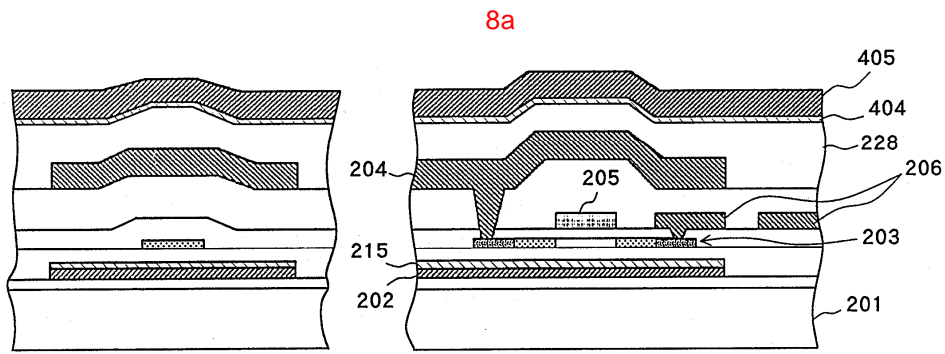
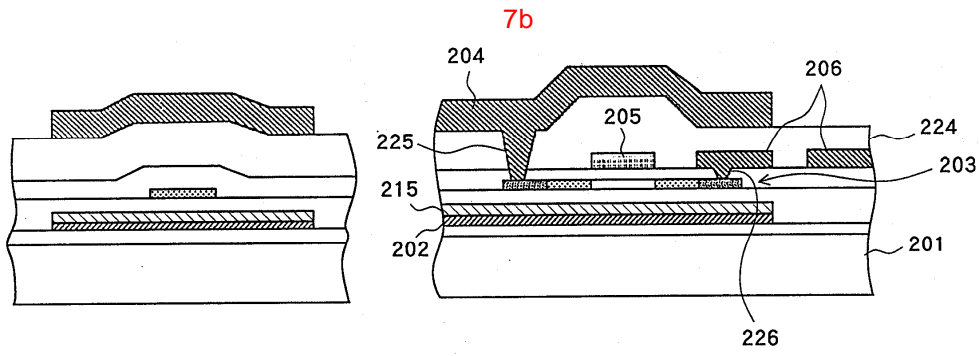
3

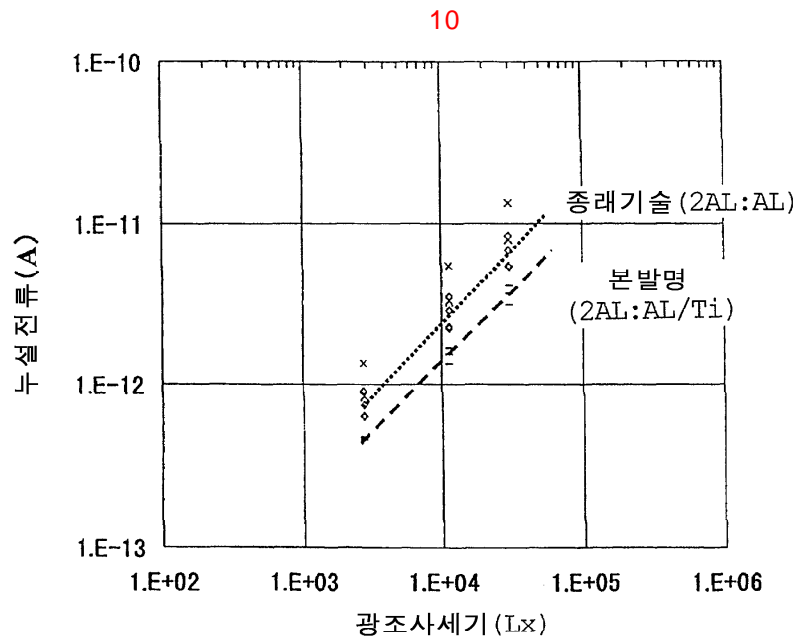
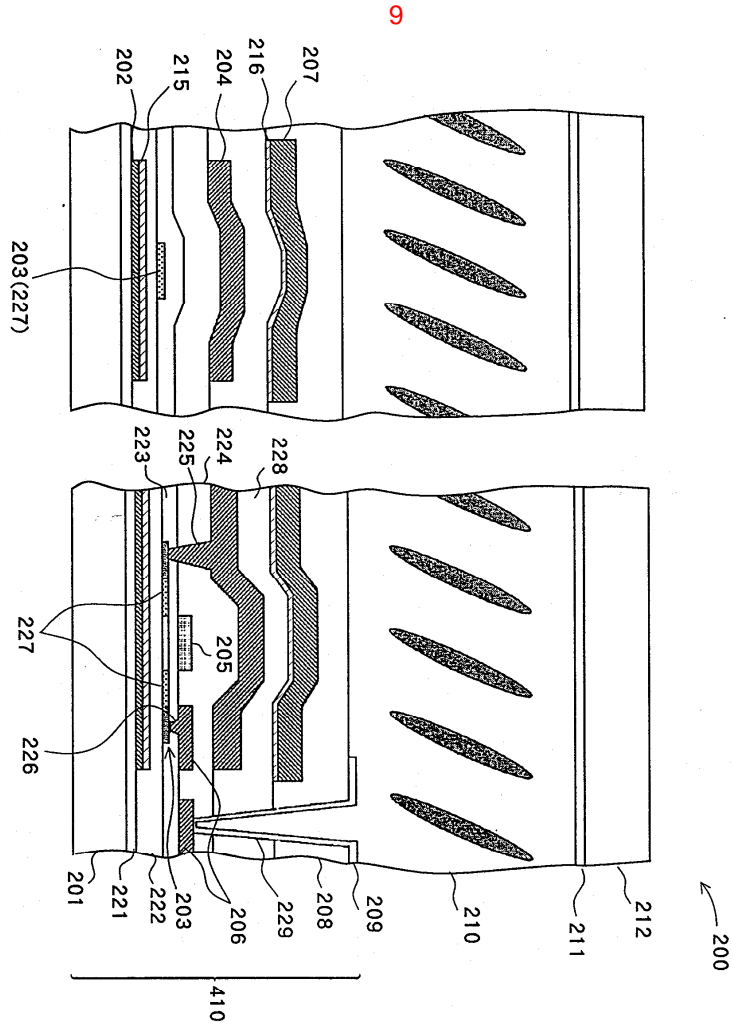


4









专利名称(译)	一种透射式液晶面板，用于通过遮光膜屏蔽指向薄膜晶体管的光束，		
公开(公告)号	<a href="#">KR100429369B1</a>	公开(公告)日	2004-04-28
申请号	KR1020000057758	申请日	2000-09-30
申请(专利权)人(译)	日本电气有限公司sikki		
当前申请(专利权)人(译)	日本电气有限公司sikki		
[标]发明人	SHIRAIISHI YASUSHI		
发明人	SHIRAIISHI, YASUSHI		
IPC分类号	G02F1/1335 G02F1/1368 G02F1/1362 G09F9/30 G02F1/13 G02F1/136 G02F1/1343		
CPC分类号	G02F1/136209 G02F1/136286		
代理人(译)	JO, EUI JE		
优先权	1999279517 1999-09-30 JP		
其他公开文献	KR1020010030551A		
外部链接	<a href="#">Espacenet</a>		

摘要(译)

透射型液晶面板不仅利用高反射率的上部金属膜而且利用低透光率的遮光膜中的至少一种来阻挡从上方入射在多个薄膜晶体管上的光线。低反射率的遮光膜层叠在上金属膜下方和薄膜晶体管上方，并且低反射率的光吸收膜层叠在多个下遮光膜上方和薄膜晶体管下方。因此，即使由透明基板的下表面反射的光线被上金属膜的下表面或下光阻挡膜的上表面多次反射，由多次反射产生的杂散光也不会到达薄膜晶体管。因此，防止了杂散光损害薄膜晶体管的操作。

