

(19)
(12)

(KR)
(A)

(51) 。 Int. Cl.⁷
G09G 3/36
G09G 3/20

(11)
(43)

10-2004-0071691
2004 08 12

(21) 10-2004-7008162

(22) 2004 05 28

2004 05 28

(86) PCT/JP2002/012139

(87)

WO 2004/047067

(86) 2002 11 20

(87)

2004 06 03

(71) 가 가

2 2 3

(72) 가 가

2 2 3

(74)

:

(54)

1 (VPC) 64 (31) , (V1d V64d) (V33d V64d) (VPC) 2 (32) (24) , 1 2 (N30, N31) 가 (VH-VL) 65 (R1 R65) , (6) (V1d V32d) ,

1

, , , , , , ,

, ,

.

64 가 64

37 (V1d V64d) (200) (R1 R65) (201.1 201.64)

(R1 R65) (V1d V64d) N201 N200 N201, N200 64
 (V1d V64d) 37 N200, N201 N200, N201 가 VH VL 가 가

(201.1 201.64) (201.1 201.64) (R1 R65)
 (V1d V64d) (V1d V64d)

(200) (201.1 201.64) 가

가 가 가

38 (210) (210) (211 213),
 2002-123326 (214) 38 (211 213) N210 N213
 (214) N210, N213 VH-VL V211 V212
 (214) N215 N VO가 V211 V211
 N215 VO가 V212 V212
 VO N215 (215) N215 P

N (210) P 214, 215 가 가 가

가

()

가

1 2 1

2 1 2 1

가

1 1

- 2 , 1 .
- 3 , 1 .
- 4 , 3 .
- 5 , 4 .
- 6 , 4 .
- 7 , 3 + .
- 8 , 1 7 .
- 9 , 1 .
- 10 , 1 .
- 11 , 2 .
- 12a 12c , 11 .
- 13 , 2 .
- 14 , 2 .
- 15 , 3 .
- 16a 16c , 15 .
- 17 , 3 .
- 18 , 3 .
- 19 , 4 .
- 20 , 4 .
- 21 , 4 .
- 22 , 5 .
- 23 , 5 .
- 24 , 5 .
- 25 , 5 .
- 26 , 6 .
- 27 , 7 .
- 28 , 8 .
- 29 , 9 .
- 30 , 10 .

, PC (6) VPC (25) , (6) (23) 6 (D0 D5) (24) 64 (V1d V64d) (6) .

4 , 3 (24) 4 , (24) (R1 R65) (30.1 30.64) .

(R1 R65) , N31 N30 , N31, N30 64 (V1d V64d) (R1 R65) , (2) (R1 R65) .

(2) , (1 , 1) 가 , N30 N31 N30 VH가 , N31 VDDL , N31 가 . 4 VL

(30.1 30.64) , 64 (V1d V64d) (V1d V64d) 31 , S1, S2 31 , 30.1 , 40, S3, P (, P) 46 5 47 S3 VDD S3 , N30, N31 VH, VL /

(40) , P (41, 42), N (43, 44) (45) . P (41, 42) , S3 N41, N42 , N (43, 44) , N42 . P (41, 42) , 가 . N (43, 44) , N41, N42 . P N43 VI(V1d) , N 46 VO N43 가 GND N45 (11) N41 . P 46 , S3 N46 GND , I2 N41 V41 47 , N46 GND (31)

S3 (31) , S3 (31) VDD , VDD가 (31) S3 (31)가 . N (43, 44) , VO VI (31)가 . N 44 P 41 VO , P 가 41 42 VO 가 . 41 42 VO가 VI , P 41 가 N 43 VO가 N41 V41 , P 46 가 VO가 VO가 VI , P 41 가 N 43 VO가 VO가 , VO=VI가 . V41 , P 46 가 가

(57) 32 , 6 (50), (S4), (56) N VH, VL / S4 VDD S4 , N30, N31

1 , 50 , (51), P (52, 53) N (54, 55) . P 5 50 S4 N51 I1 . P 52, 53 , N51 N52, N53 , N55 VI(V1d) . N56 VO . N 54, 55 , N52, N53 GND . N53 54 55 , N56 54 55 , I2 . N 57 , 56 , S4 N56 GND , (32) N52 V52 . I2 (32)) S4가 , (32) VDD , (32) S4가 , VDD가

(32)가 P (32)가 P (52, 53) , N VI VO 가 .
 P 53 N 54 55 , N 54 55
 , N 54 VO 가 .
 VO가 VI , N 54 가 P 52 VO
 N52 V52가 , N 57 가 가 가
 VO가 VI , N 54 가 P
 N52 V52가 , N 57 가
 VO가 , VO=VI가 .
 4 가, (31, 32) N45, N55 V1d , N46, N
 56 S1, S2 S1, S2 S1, S2 30.1
 S1, S2 , S3, S4 / 30.2 30.64
 30.1
 , VL (V1d V64d) (6) 가 , (6) VH
 VPC=(VH+VL)/2 . VPC , V32d V33d
 N30, N31 VH VL 가 , 30.1 30.32 S2, S4가
 30.33 30.64 30.1 30.32 가 , V1d V32d , V33d
 V53d S1, S3 , V64d>VPC>V1d . 30.33 30.64 가
 N30, N31 VL VH가 가 , 30.1 30.32 S1, S3
 30.33 30.64 30.1 30.32 가 , V1d V32d , V33d
 V64d S2, S4가 , V64d<VPC<V1d . 30.33 30.64 가
 7 , 3 + (26) 7 , +
 (26) , (6) S5 , 2 (6)
 S6 S5 VPC , S5 ,
 (6) PC가 「H」 S6 , 2 (6) S5가 ,
 6 「H」 VPC S6 , 2 (6) , n (, n 2 EQ가)
 (6) VG1 VGn . S6
 8 , 1 7 , 8 ,
 EQ , n (6) PC VG1 VGn 「L」 , S1 S6 ,
 V1d V64d (4) VS 「L」 , N ,
 (11) .
 t0 , EQ가 「H」 , S6 n
 (6) , n (6) VG1 VGn , (6)
 1 , t0 n EQ가 「L」 , S6 n . t
 (6) .
 , t2 , PC가 「H」 , S5가
 (6) VPC t3 , P1 「L」 ,
 S5가 n (6) .
 , t4 , N30, N31 VH VL 가 , 30.33
 30.64 (6) S1, S3 VG1 VGn , (25) 30.1 30.32 S2, S4가 , n
 (6) 31 32

30.33 30.64 (6) (31) P 46
 , 30.1 30.32 6 (32) N
 57
 t5 , 1 (4) VS가 「H」 , 7 N
 (11)가 (6) VG가 N (11) (2) (2) (4)
) VG가 「L」 , N (11)가 (2)
 (12) (2)
 1 (30.1 30.64) (31), (32) (S1, S
 2) VPC (4 30.33 30.64)
 S1 (31) VPC (32)
 (4 30.1 30.32) S2 (32) VDD
 (6) 31, 32 , S3, S4가
 (30.1 30.64)
 11.41 44, 46, 52 55, 57 , MOS , (TF
 T)
 9 , 1
 , 4 , 9 , 2 60, 61 64 6
 3.1 63.64 , 60 , N61 N60 , (R1 R65)
 N60, N61 , VH VL 가 , 60 , 64 V1a
 V64a(V64a>V1a)가 , N63 N62 (R1 R65)
 N62, N63 , VL VH가 가 , 61 , 64
 V1b V64b(V64b<V1b)가
 63.1 63.64 , 4 6 (31), (32) (S1
 , S2) 63.33 63.64 (31) 60
 V33a V64a , 63.1 63.32 (32) 60
 V1a V32a , 63.33 63.64 (32) 61
 V33b V64b , 63.1 63.32 (31) 6
 1 V1b V32b (31) S1
 (32) S2
 S1 S4 , 4 6 , 9
 63.33 63.64 S1, S3 63.1 63.32 S2, S4가
 , V64d>VPC>V1d가 , 63.33 63.64 S2, S4가
 63.1 63.32 SI, S3 , V1d>VPC>V64d가
 , l
 10 , 1 , 2 (2) P (65) EL(, 2) (66)
 10 , 65 EL 66 VDD (11) (5) (66) , P
 . P N (11) (11) N11 , N11 EL 6
 가 , P 65 (2) 가 가 , EL 6
 6 . EL 66 (2) 가 가 , 4
 (24) , N30, N31 VH VL , 30.1 30.32
 (32) , 30.33 30.64 (31)
 1
 (2)
 5 (31) , VO가 (40)
 , 가 , 2 ,

N 43 N 44 , , 45 I
 1 . VM VI , N 43 N 4
 4 가 VM VI , N 44 가
 가 N 43 가 , N41 V41 P 71
 가 , VM VM VI , N 44
 가 N 43 가 가 , N41 V41 P
 71 가 가 , VM (70) VI ,
 VO=VI가 , 11 .

(3)

15 , 3 (85) 15 , (8
 5) , 11 (80) 40 6 50 , P 71
 . N 74 N71 86 N 87 VDD
 . N N52 87 , N72 GND N71 13 50
 , VM (85) VI . , P 53 N (85) 55 (50) , N ,
 54 55 , N 54 55 VM , N 가

VM VI , N 54 가 P 52
 VM N52 V52가 , N 87 가
 VM 52 VM VI , N 54 가 P
 가 VM N52 V52가 , N 87
 , VM , VM=VI가 .

86 13 N71 VC VC=VM+VTN .
 , N 73 73 , N46 47 , N
 VO VO=VC-VTN=VM=VI가 , VI

3 , (50) 53, 72, 73 ,
 40 , (85) 5 (31) 50

16a 16c , 15 86 16a ,
 86 , P 88, 89 90 , P 88 90 VDD
 GND , P 88, 89 , P 88 VDD N71
 88 89 , 가 . P 89 , P 88 89 , P 90 , P
 . 88 89 , 90 13

16b , 86 P 91 , P 91 , VDD
 N71 , , VBP , P 91 , VBP , P 13
 91 , P 91 , P 91 , P 91 , P 13
 D 16c , 86 , P 가 92 , P 92 , VD
 - N71 0V 13 VDD , P VDD 92 ,
 N71 86 . 51 , 86

17 , 95 , 15 85 50 96 .
 96 , 50 N 54, 55 97, 98 . 97, 98 ,

N52, N53 GND . P 52 P VI
 53 , P 52 P 51 53 VM VI
 VI , P 52 P 53 가 53 VM VM N
 52 V52가 N 87 가 가 , P 52 가 가 VM
 VI , P 53 가 가 , P VM 52 가 ,
 N52 V52가 N 87 가 가 , P VM 52 가 ,
 VM VI , VO=VI가 . , 15 (85)

, 18 (100) , 15 85 50 5 40
 . N 87 VM N41 V41 , N 44 VM
 43 N41 V41 , N 41 가 N
 VM 43 VM VI , P 87 가 가
 43 VM N41 V41 , P 41 가 N
 , VM=VI가 , VO=VI가 . , N 87 가
 , 15 (85)

(4)

19 , 4 (105) , 6 (32) N 57 P , 6 106 108
 . 19 , (105) , 6 (32) N S4 , 106 108
 109 , , ,

P 106, 107 109 , VDD GND , P
 . P 106 106 N52 V52 . P 53 , P
 N107) 106 107 N106 VM . P 107 53 , P
 GND . P 107 , 109 , N107 ()
 I3 . P 108 , N56 GND
 , N107 VC .

VM , 50 VI , VM VI
 , N 54 가 P 52 N52 V52가
 , P 106 가 가 VM VM VI
 , P , N 54 가 P 52 N52 V52가
 , P 106 가 가 VM , VM=VI가 .

109 I3 P 107 , N107 V
 C VC=VM- VTP 가 , VTP P 56 I2
 P 108 , VO VO=VC+ VTP =VM- VTM +
 VTP =VM=VI가 .

4 , (5) (53, 107, 108) ,
 (50) , (105) 6 (32) , (50)

20 110 , 19 105 P 106 109 111
 N I3 112 . N 111 , VDD N106
 N52 V52 . N107 GND , N52 V52가
 N 112 가 가 , VM VI
 , N52 V52가 N 112 가 , VM VI
 , VM=VI가 , VO=VI가 . , 19 105 VM

21 115 , 19 105 50 5 40 .

가 VM, VI, N41, V41, P, 106
 O=VI가 P, VM, 106, 가, 가, VM, VI, P, N41, V41, VM=VI가, V
 19, 105

(5)

22, 5, (120), 22, 70
 120, 11, 70, 20, 110, 70, N46, 70
 N45, 110, 가, 70

VO가, VI, N, 73, N, 73
 VTN, N, 73, P, P, 108, -
 P, 108, VTP, P, 108, ,

VO가, VI, P, 108, P, 1
 VTP, P, 108, N, 73
 VO가, N, VO=VI가, 73, N, 73, ,

(120), 4, 5, (31), (32), 120
 31, P, 108, N, 120
 73, N, 73, P, 108, 32, ,
 , 31, 32, ,

5, 2, , ,
 가, 23, (125), 15, (85)
 21, (115), 85, N46, 85, N45, 115, 115
 , 22, 120, ,

24, (130), 11, (70), 21, (115)
 25, (131), 15, (85), 20, (110)
 , 22, (120), , , 120, 125, 130, 1
 31, , 47, 56, , 가, .

(6)

26, 6, (135), 26, ,
 135, 11, 70, P, 136, 137, 가, P, 136, 136
 74, N72, GND, , P, 136, VC1, 137, ,
 (N136) . P, 136, . P, 137, ,
 N46, GND, , N136, VC1, .

(40), N72, VM, VM=VI가, N71, VC, VC=VI+
 VTN, NI36, VC1, VC1=VI- P, VTP, 가, , VO가, VI, ,
 N, 73, N, 137, 73, VO가, VI, ,
 , P, 137, , , VO=VI가, .

6, 5, , 1, ,
 , 47, 가, .

(7)

27 , 7 (140) 27 ,
 140 , 20 110 N 141, 142 가 . 111 N
 141 VDD N106 , N 141
 (N111) N56 , N111 VC1 142 ,
 VDD N56 , N111 VC1
 (50) N106 VM VM=VI가 . N111 VC1 VC1
 =VI+VTN , N107 VC VC=VI- VTP 가 . VO가 VI VC1 VC1
 , N 142가 , P , P 108 N 142가 . VO가 VI
 , P 108 N 142가 . VO=VI가
 .
 7 , 6
 , 56 가 .

(8)

28 , 8 (150) 28 ,
 150 , . 151, 155 158 .
 2, N 151 , V11(15V) GND 15
) 153 P 154 . N 153 (N152
 45 VI . 153 , . P 154 , N
 152 , 153, 154
 P 154 (N153) V153 V153=VI+ VTP 가 , N 153
 (N152) V152 V152=VI+ VTP +VTN . 151 , VI
 VTP +VTN V152
 155 , V12(15V) N46 N 156 P
 157 . 158 , N46 GND . N
 156 , 151 V152 . P 157 ,
 . P 157 , . N 156
 V12가 , N 156 1
 58 , 156, 157 .
 N 156 (N156) V156 V156=V152-VTN=VI+ VTP 가 . N46
 VO , VO=V156- VTP =VI가 .
 8 , VO , 150 .

(9)

29 , 9 (160) 29 , 16
 0 , 161, 165 166 .
 161 , V13(5V) V14(-10V) N
 162, P 163 164 . N 162 , N55
 . P 163 , (N163) . P 163 ,
 . 164 , 162, 163
 .
 N 162 (N162) V162 V162=VI-VTN . P 163 (N163)
 N163) V163 , V163=VI-VTN- VTP 가 . 161 , VI -VTN

- VTP V163 .

110V) 165 , V13 N56 166 , V15(
 N166 P 168 N . P
 168 , 161 V163 . N 167
 . N 167 , P 167
 V15가 , P 168 .
 165 , 167, 168 .

P 168 (N167) V167 , V167=V163+ VTP =VI-VTN . N56
 VO , VO=V167+VTN=VI가 .

9 , 8 .

(10)

30 , 10 (170) 30 ,
 170 , 28 150 , 29 160 151 P
 154 161 N 162 , N171 VI
 . 155 P 157 166 N 167 ,
 N172 .

VO가 VI 155 156, 157
 166 167, 168 , VO가 VI
 , 166 167, 168 , 155 VO가 VI
 , VO가 , VO=VI가 . 156, 157

170 , 4 5 (31) (32) 170
 31 , 166 167, 168 155
 156, 157 . 170 32
 , 155 156, 157 166 167, 168
 . , 31, 32 ,

10 , 8 .

31 , 10 (175) 31 ,
 175 , 30 170 151, 152 176, 17
 8 . 176 , 151 152
 178 , 161 164 177 . 177,
 179 , 177, 179가 152, 164
 . , 30 170 .

가 170, 175 , 158, 165 ,

(11)

32 , 11 (180) 3
 2 , 180 , 70, 181 S11 S13 .
 70 , 11 70 VI S11 S13 , 70
 , VOF VO VOF가

, S11 , N45 N 43 . 181 S12
 , N 43 N45 , S13 , N45
 181 S12 , P S11 S13 , P . S11 S13
 N , P N . S11 S13

() / .

1 VOF가 VI VOF 33
 S11 S13 t1 S11, S12가
 VO VO=VI-VOF가 181 VOF

t2 S11, S12가 VOF 181
 S13 , N 43 V43 VI+VOF가
 t3 70 VO VO=VI+VOF-VOF=VI가 70 VOF

11 70 VOF VO VI

11 70 VOF
 31, 32, 80, 81, 85, 95, 100, 105, 110, 115, 135, 140, 150, 160 VOF

VOF 34 , i(, i 1) 4
 VS_i 「H」 「L」 i+1 4 VS_{i+1} 「L」
 「H」 VOF , 2
 가 VOF

(12)

35 12 (185)
 35 185 22 120 186a, 186b 311a S14a, S11b S14b

S11a, S11b , N45 70, 115 N 43, 52
 186a S12a , 70 N 43 N 73
 (N73) 186b S12b , 110 P 52
 P 108 (N56) S13a , N45
 186a S12a S13b , N45 186b
 S12b S14a, S14b , N73, N56 N46

185 S11a S14a, S11b S14b
 V56 V73=VI-VOFa, V56=VI-VOFb가 , 186a, 186b N73, N56 V73,
 VOFa, VOFb

S11a, S12a, S11b, S12b가 VOFa, VOFb가 186a, 186
 S13a, S13b가 70, 110 N 43, 52
 가 VI+VOFa, VI+VOFb가 , 70, 110 V73, V56 V73=VI+VOFa-
 VOFa=VI, V56=VI+VOFb-VOFb=VI가 , 70, 110 VOFa, VOFb
 S14a, S14b가 , VO=VI가

185 , 4 5 (31) (32) 185가
 31 P 108 N
 73 . N 73 P 185가 32
 . N 73 P 108
 , 31, 32 ,
 12 , 185

(13)

36 , 13 (190) 36
 , S11b S14b 가 190 , 30 170 191a, 191b S11a S14a

S11a, S11b , N190 154, 162 (N171a, N171b)
 S14a, S14b , N191 157, 167 (N172a, N172b)
 191a S12a , N171a N172a 191b
 S12b , N171b N172b S13a , N190 191a
 S12a N191a 13b , N190 191b
 S12b N191b

190 S11a S14a, S11b S14b
 S11a, S12a, S11b, S12b가 , N172a, N172b
 V172a, V172b가 V172a=VI-VOFa, V172b=VI-VOFb가 , 191a, 191b VOF
 a, VOFb

S11a, S12a, S11b, S12b가 VOFa, VOFb가 191a, 191
 b S13a, S13b가 , 154, 162 가 VI+VOFa,
 VI+VOFb가 N172a, N172b V172a, V172b가 V172a=VI+VOFa-VOFa=VI, V17
 2b=VI+VOFb-VOFb=VI가 , 170
 S14a, S14b가 , VO=VI가

190 , 4 5 (31) (32) 190
 (31) , 167, 168 156, 157
 157 167, 168 32 , 156,
 31, 32

13 , (190)

(57)

1.

(D0 D5)

가 (2, 11, 12),
 (4),
 (6),
 (4) , (4) (2, 11, 12)
 (7)
 (D0 D5) , (7) (2, 11, 12)
 (8)
 (8) ,
 (6) (VPC) (26),
 (V1d V64d) (R1 R65),

(V1d V64d) (VCP) 1 (31),
 (V1d V64d) (VPC) 2 (32),
 (D0 D5) 1 2 (V1d V64d) (31 32) (6),
 (2, 11, 12) (25)

2.

1 (31),
 1 (VDD) 1 (N46) 1 (N46) (46),
 1 (N46) 2 (GND) 1 (N46) 1 (46) (47),
 1 (N46) (VO) (VI) 1 (46) (40),
 2 (32),
 3 (VDD) 2 (N56) 2 (N56) (56),
 2 (N56) 4 (GND) 2 (N56) 2 (56) (57),
 2 (N56) (VO)가 (VI) 2 (57) (50)

3.

2 (40, 71, 72, 74),
 5 (VDD) 1 (73) 3 (71),
 4 1 (72), 1 (73) 1 (73)
 4 (72) 2 6 (GND) 3 (74),
 4 (72) 2 (VM)가 (VI) 3 (71) (40)

4.

2 (50, 86, 72, 87),
 5 (VDD) 1 (73) 3 (86),

3 1 (72), 1 (73) 1 (73)

3 (72) 2 6 (GND) 4 (87),

3 (72) 2 (VM)가 (VI) 4 (87)
(50)

5.

2 ,

2 (50, 106, 107, 109) ,

1 5 (VDD) 3 (106),

1 3 (106) 2 (108) , 4 2 (107), 2
(108)

4 (107) 2 6 (GND) 3 (109),

4 (107) 1 (VM)가 (VI) 3 (106)
(50)

6.

2 ,

2 (50, 111, 107, 112) ,

5 (VDD) 3 (111),

1 3 (111) 2 (108) , 2 3 (107), 2
(108)

3 (107) 2 6 (GND) 4 (112), ,

3 (107) 1 (VM)가 (VI) 4 (112)
(50)

7.

1 ,

1 2 (31, 32) ,

1 (VDD) (N46) , (N46) 1
(73),

2 (N46) 2 (GND) , (N46)
(108),

(N46) (VO)가 (VI) 1 2 (73, 108)
(40, 71, 72, 74, 50, 111, 107, 112)

1 (31) , 1 (73) 2 (108)

2 (32) , 2 (108) 1 (73)

8.

7

1 2 (31, 32), (N46) 3 (GND, VDD)
(47, 56)

9.

7

(40, 71, 72, 74, 50, 111, 107, 112) ,

3 (VDD) 1 (73) 3 (71),
4 1 (72), 1 (73) 1 (73)
4 (72) 2 4 (GND) 1 (74),
4 (72) 2 (VM)가 (VI) 3 (71)
1 (40),
5 (VDD) 2 (111),
1 2 (111) , 2 2
(108) 2 (108) 5 (107),
5 (107) 2 6 (GND) 6 (112),
5 (107) 1 (VM)가 (VI) 6 (112)
2 (50)

10.

7

(50, 86, 72, 87,40, 106, 107, 109) ,

3 (VDD) 1 (73) 1 (86),
3 1 (72), 1 (73) 1 (73)
3 (72) 2 4 (GND) 4 (87),
3 (72) 2 (VM)가 (VI) 4 (87)
1 5 (VDD) 5 (106),
1 5 (106) 2 (108) , 6 2 (107), 2
(108) 2 (108)
6 (107) 2 6 (GND) 2 (109),
6 (107) 1 (VM)가 (VI) 5 (106)
2 (40)

11.

7 ,
 (40, 71, 72, 74, 40, 106, 107, 109) ,
 3 (VDD) 1 (73) 3 (71),
 4 1 (72), 2 (73) 1 (73)
 4 (72) 2 4 (GND) 1 (74),
 4 (72) 2 (VM)가 (VI) 3 (71)
 1 5 (VDD) 5 (106),
 1 5 (106) 2 (108) , 6 2 (107), 2
 (108)
 6 (107) 2 6 (GND) 2 (109),
 6 (107) 1 (VM)가 (VI) 5 (106)
 2 (40)

12.

7 ,
 (50, 86, 72, 87, 50, 111, 107, 112) ,
 3 (VDD) 1 (73) 1 (86),
 3 1 (72), 1 (73) 1 (73)
 3 (72) 2 2 (GND) 4 (87),
 3 (72) 2 (VM)가 (VI) 4 (87)
 1 5 (VDD) 2 (111),
 1 2 (111) , 2 2
 (108) 2 (108) 5 (107),
 5 (107) 2 6 (GND) 6 (112),
 5 (107) 1 (VM)가 (VI) 6 (112)
 2 (50)

13.

7 ,
 (40, 71, 72, 74) ,
 3 (VDD) 1 (73) 3 (71),

4 1 (72), 1 (71) 1 (73)
 1 4 (72) 2 (137) , 5 2 (136), 2 (137)
 5 (136) 2 4 (GND) (74),
 4 (72) 2 (VM)가 (VI) 3 (71)
 (40)

14.

7 ,
 (50, 111, 141, 107, 112) ,
 3 (VDD) 1 (142) (111),
 3 1 (141), 1 (142) 1 (142)
 1 3 (141) 2 (108) , 4 2 (107), 2 (108)
 4 (107) 2 4 (GND) 5 (112),
 4 (107) 1 (VM)가 4 (VI) 5 (112)
 (50)

15.

1 ,
 1 (151, 155, 158) ,
 (VI) (V152) 1 (151),
 1 (151) (V152) (VI) 1 (N46)
 (155),
 1 가 , (GND) 1 (N46) , 1 (155) (158)
 ,
 2 (161, 166, 165) ,
 (VI) (V163) 2 (161),
 2 (161) (V163) (VI) 2 (N56)
 (166),
 2 (VDD) 가 , 2 (N56) , 2 (166) (165)
 2 (N56)

16.

1 ,

1 2 (31, 32) ,
 (VI) (V152) 1 (151),
 1 (151) (V152) (VI) (N172)
 (155),
 (VI) (V163) 2 (161),
 2 (161) (V163) (VI)
 (166) ,
 1 (31) , (155) (166)
 ,
 2 (32) , (166) (155)

17.

16 ,
 1 2 (31, 32) , (N172) (GND, VDD)
 (158, 165)

18.

1 ,
 (8) , 1 2 (31, 32) ,
 (VOF) , (VOF)
 (181, S11 S13)

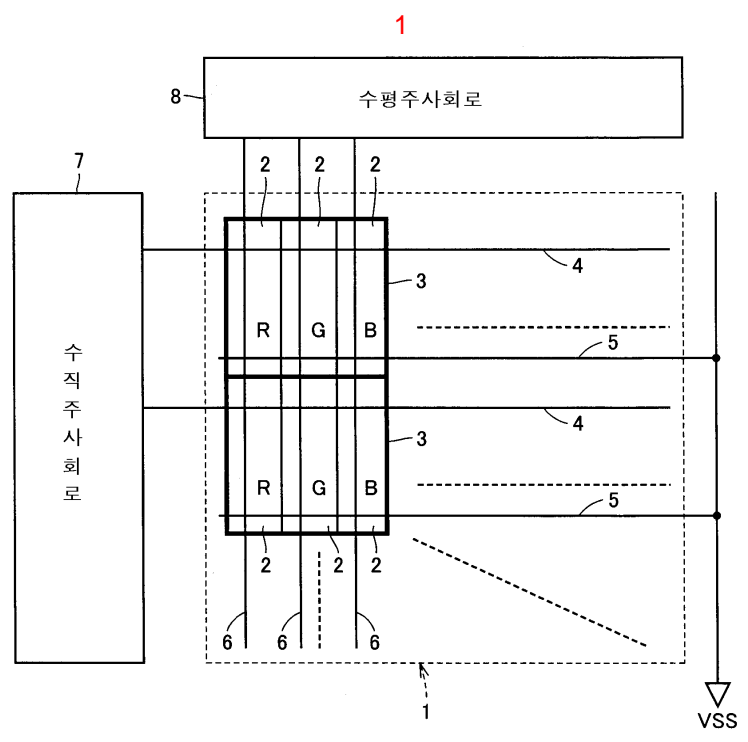
19.

1 ,
 (2, 11, 12) , (2) ,
 (R1 R65) , 1 (VH-VL) (V1d V64d)
) , 2 (VL-VH) (V1d B64d) ,
 1 2 (31, 32) 2 , (31, 32) 1 2 (31, 32) 1
 , 1 2
 (25) , 1 1 2 (31 32)
 (6) (2, 11, 12) , 2 (31 32) 1
 2 (31 32) (6) (2, 11, 12)

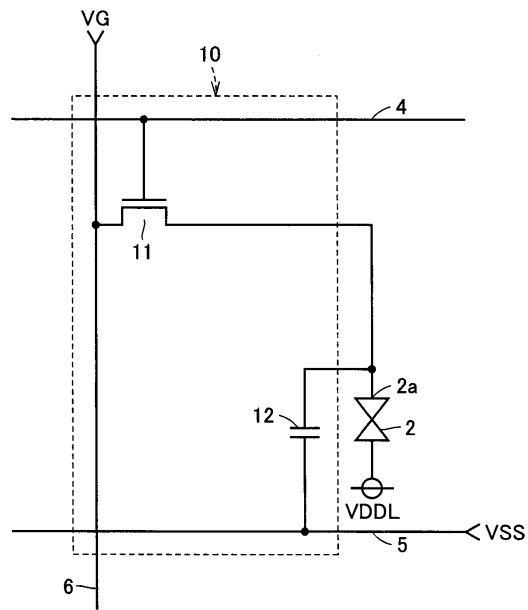
20.

1 ,
 (2, 11, 12) , (2) ,
 (60, 61) ,
 (VH-VL) (V1a V64a) 1 (60),
 (VL-VH) (V1b B64b) 2 (61) ,

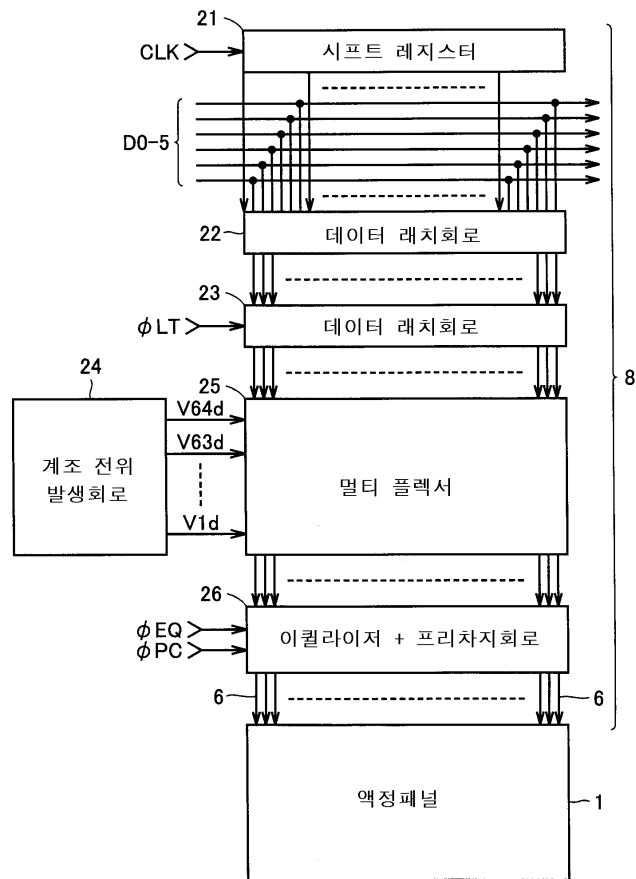
1 2 (31, 32) 2 ,
 1 2 (31, 32) , 1 (60) 1 ,
 1 2 (31, 32) , 2 (61) 2
 ,
 (25) , 1 1 2 2 (31 32)
 (6) (2, 11, 12) (6) , 2 (2, 11, 12)
 1 2 (31 32) (6) (2, 11, 12)



2

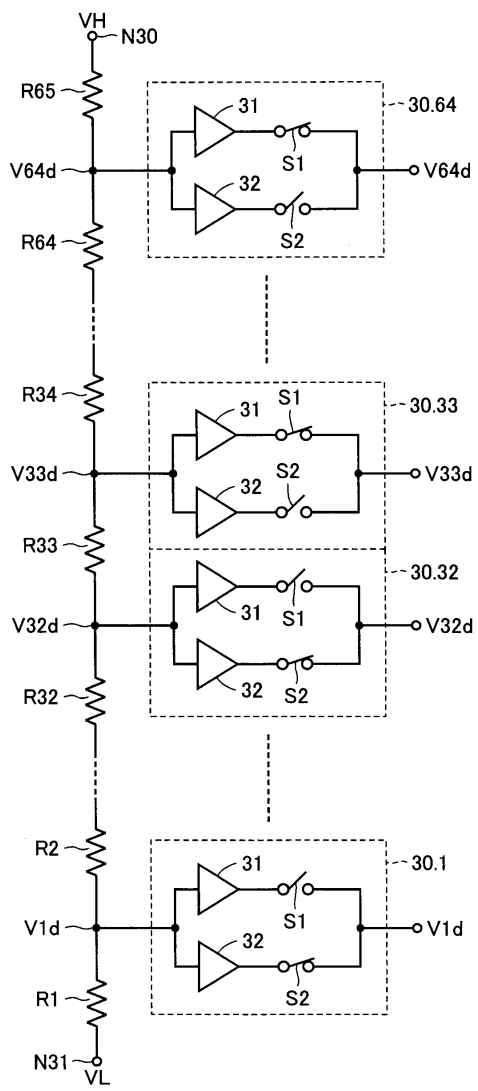


3



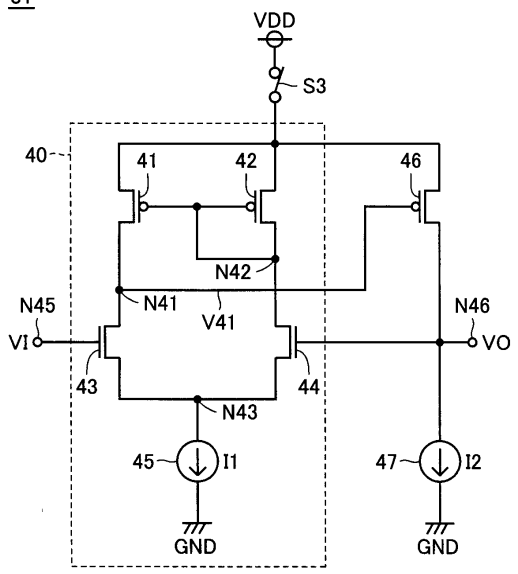
4

24

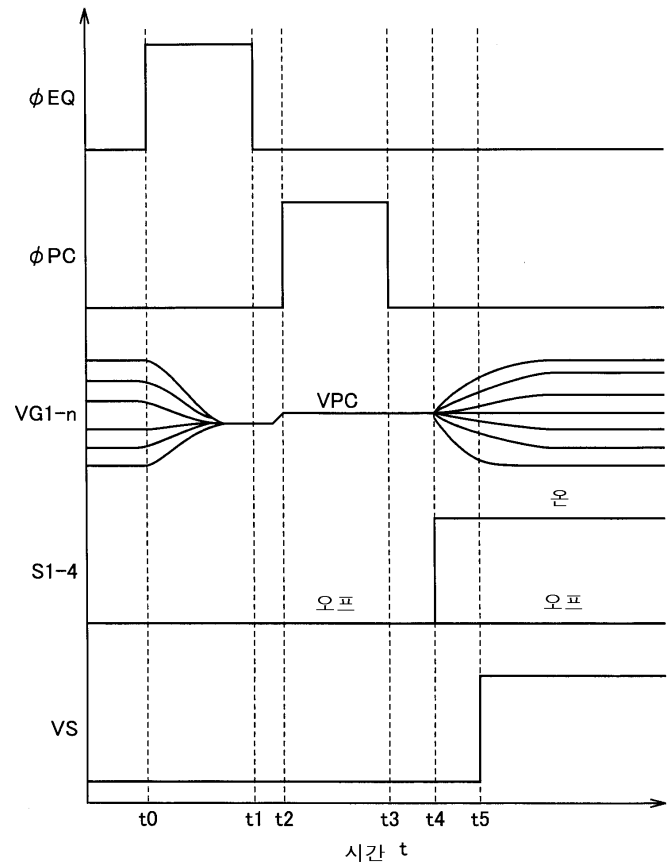


5

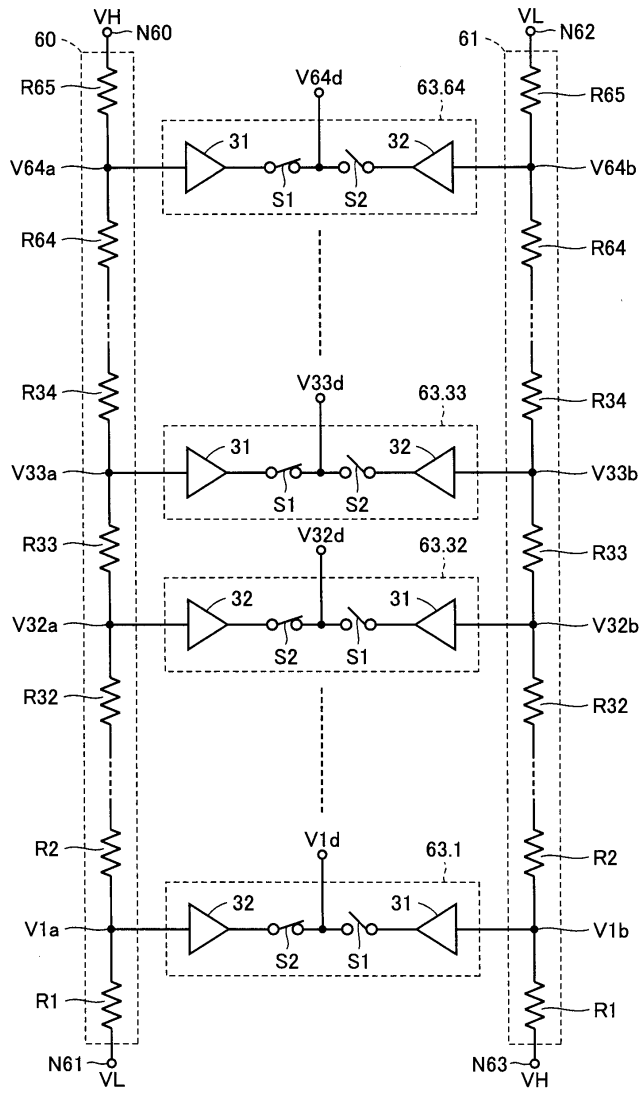
31



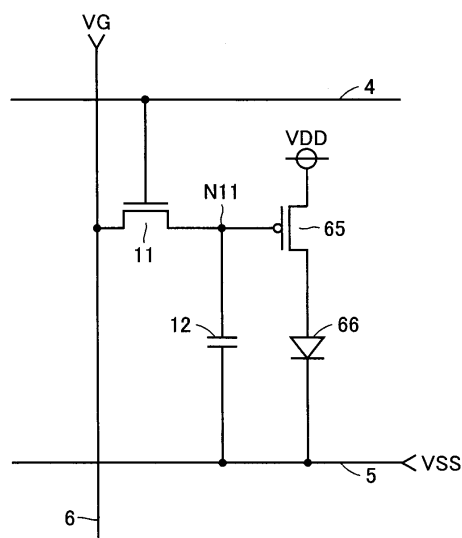
8



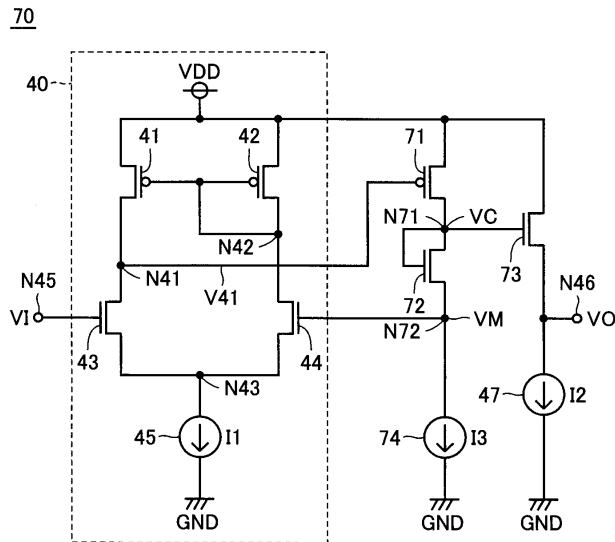
9



10

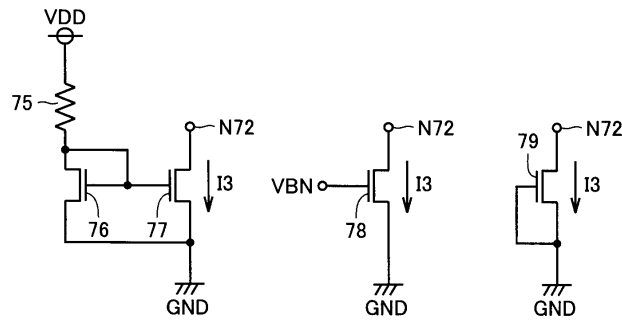


11

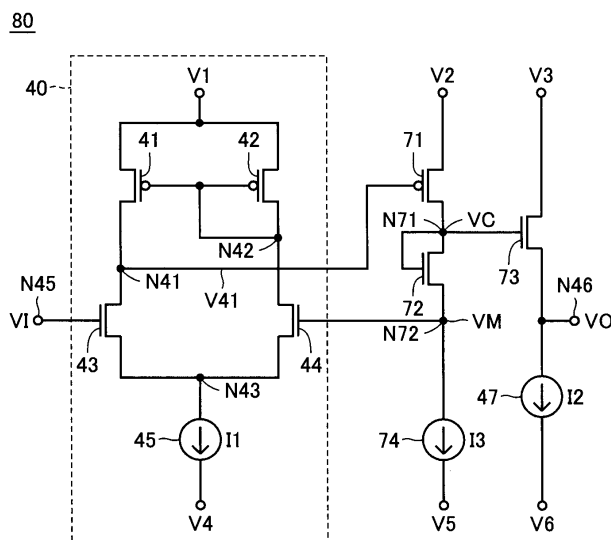


12

(a) (b) (c)

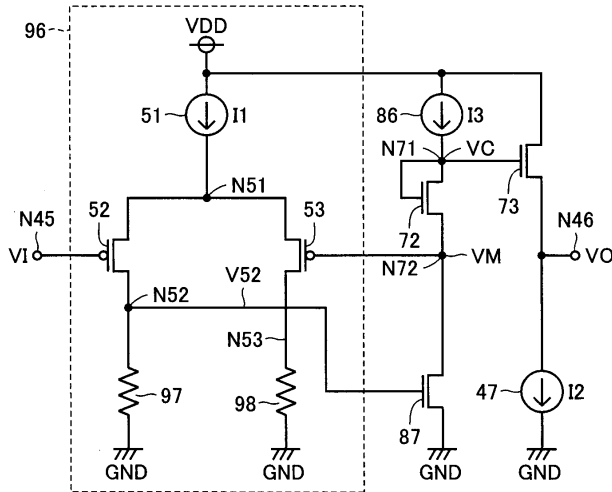


13



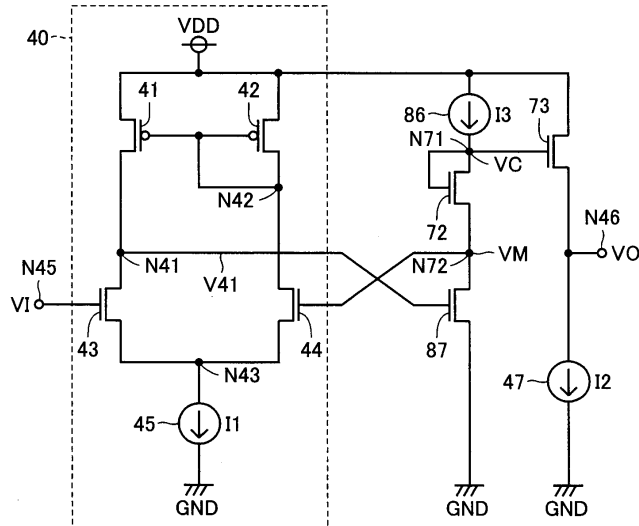
17

95



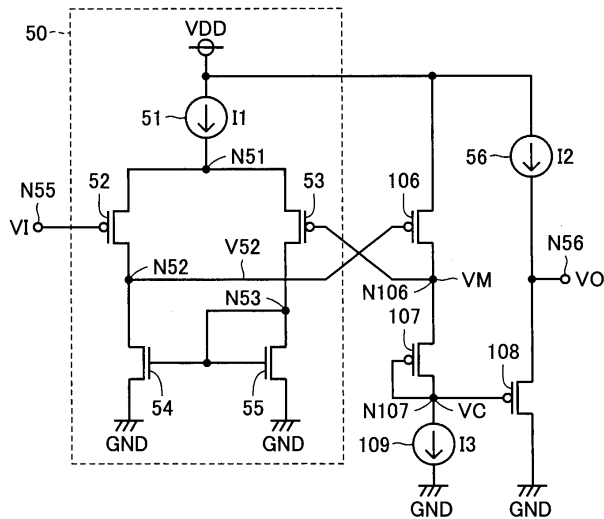
18

100



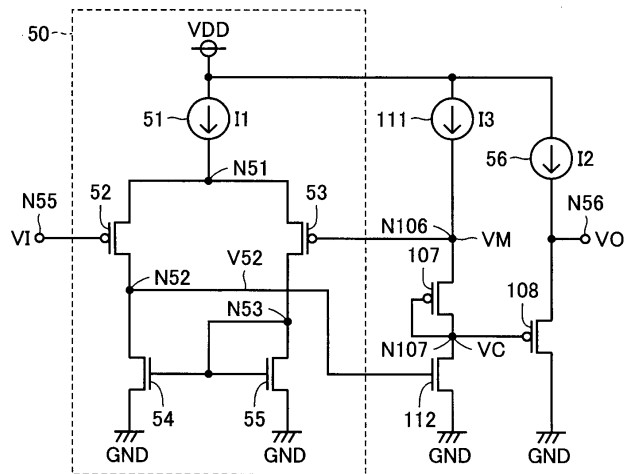
19

105



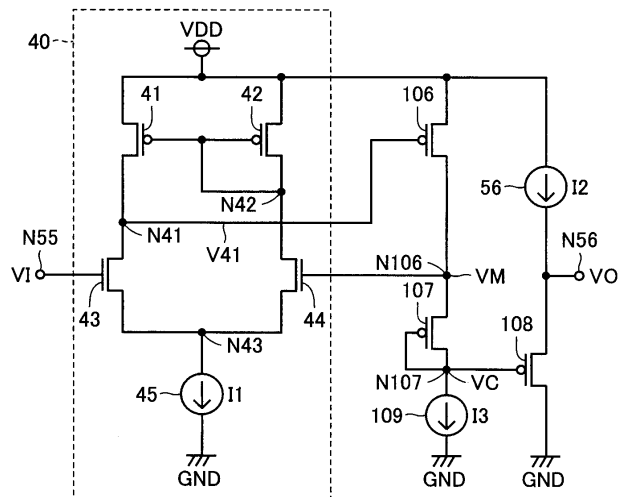
20

110

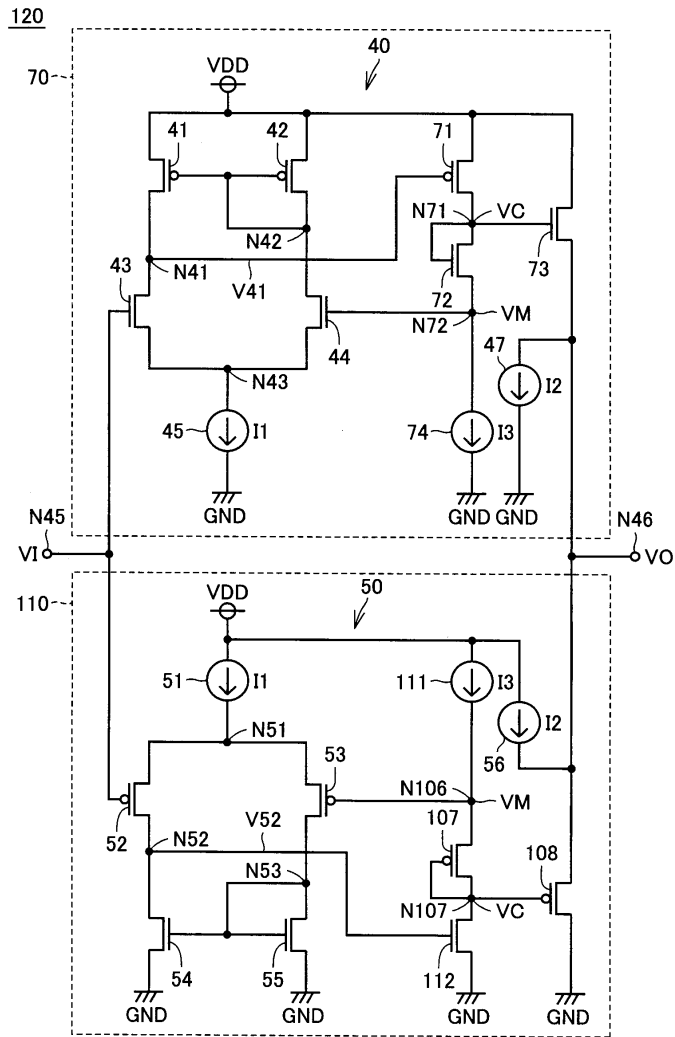


21

115

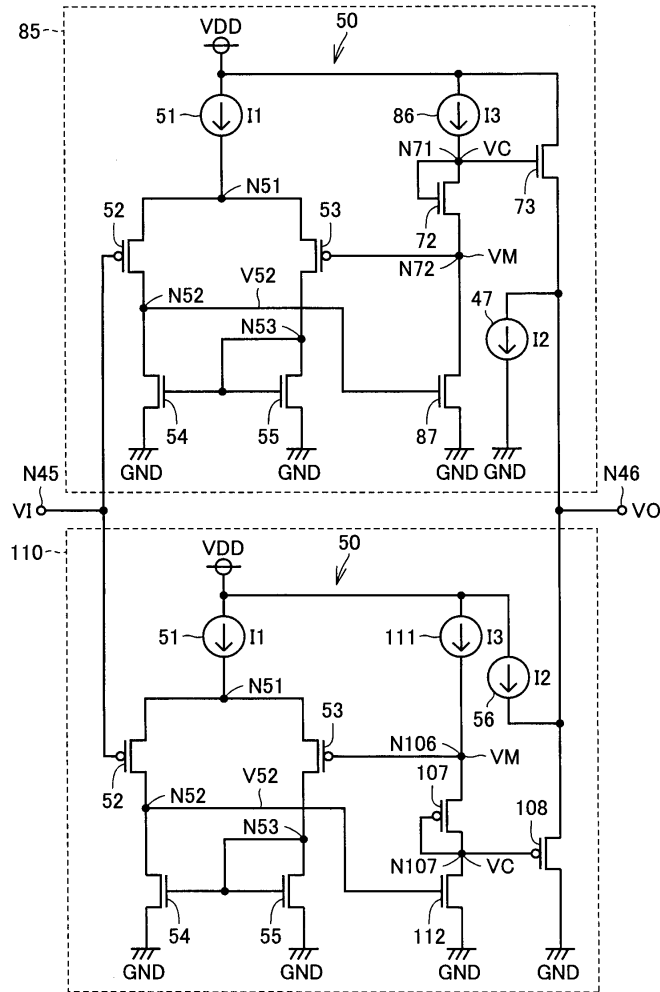


22



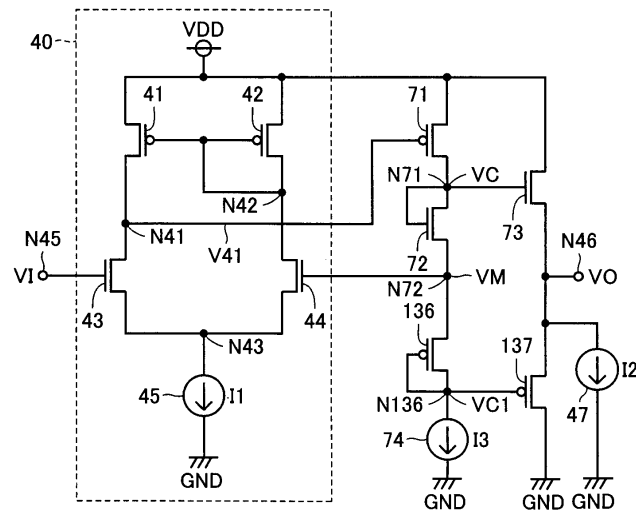
25

131



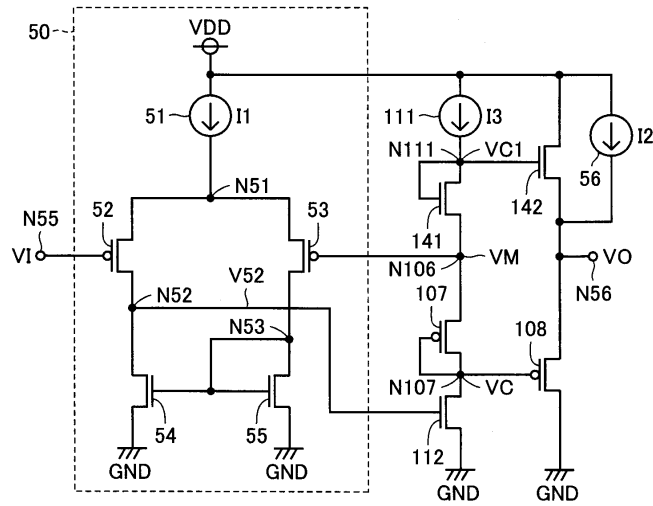
26

135



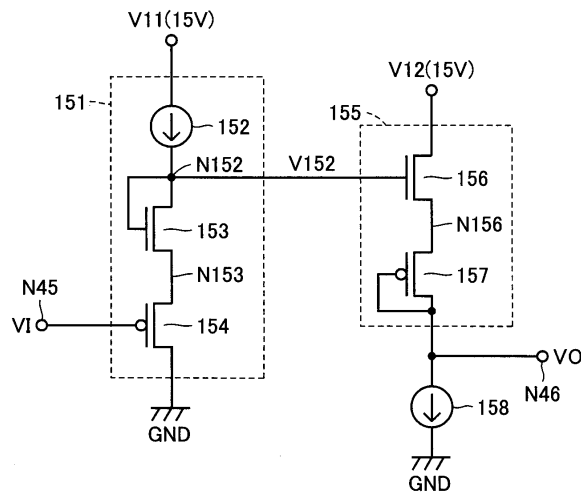
27

140



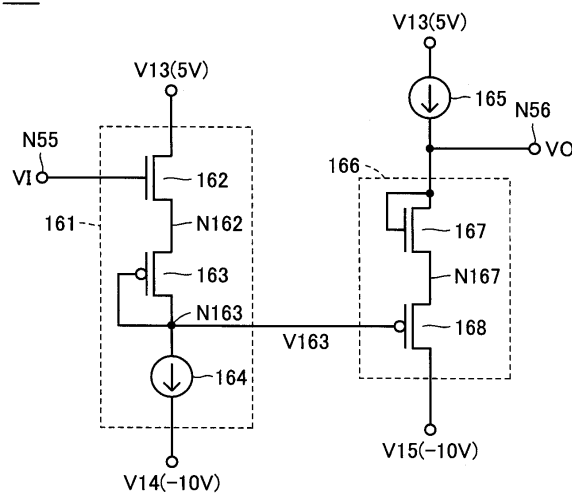
28

150

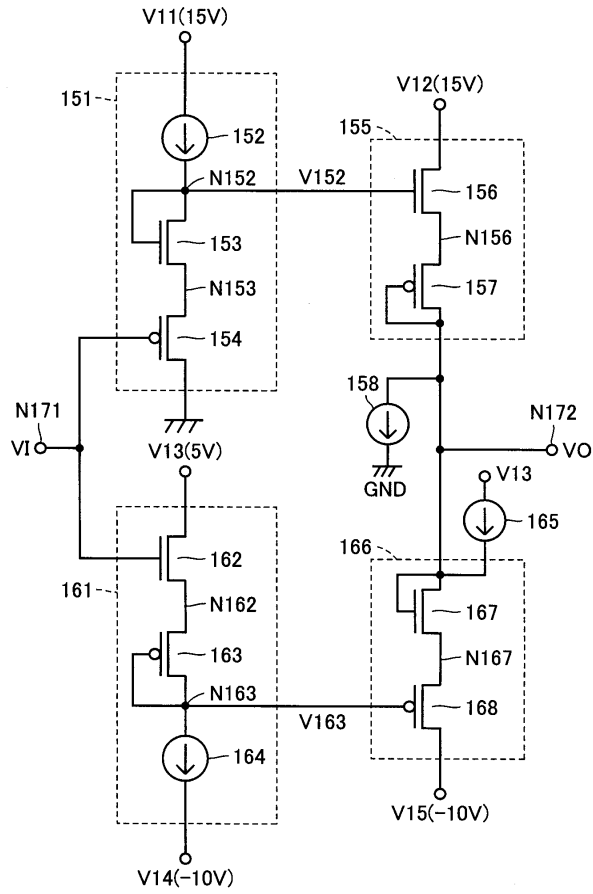


29

160

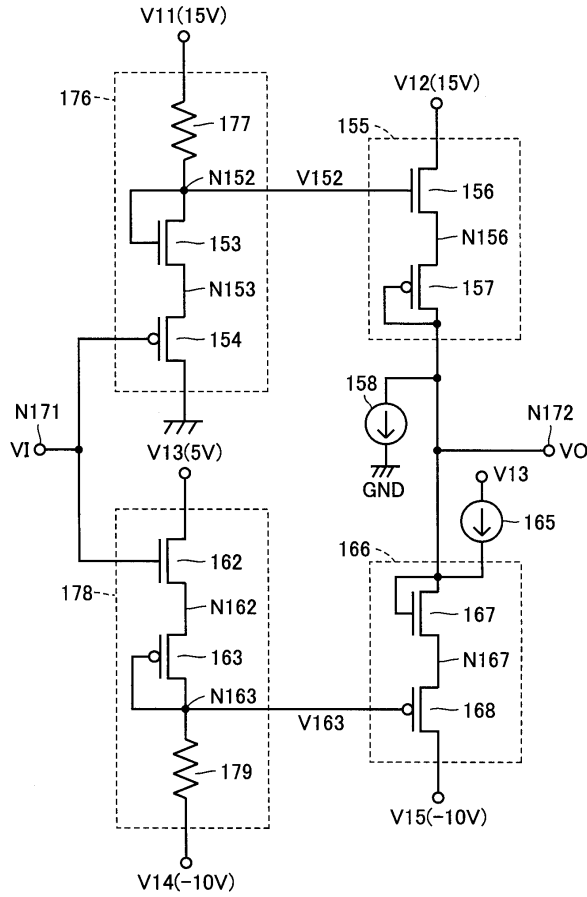


170



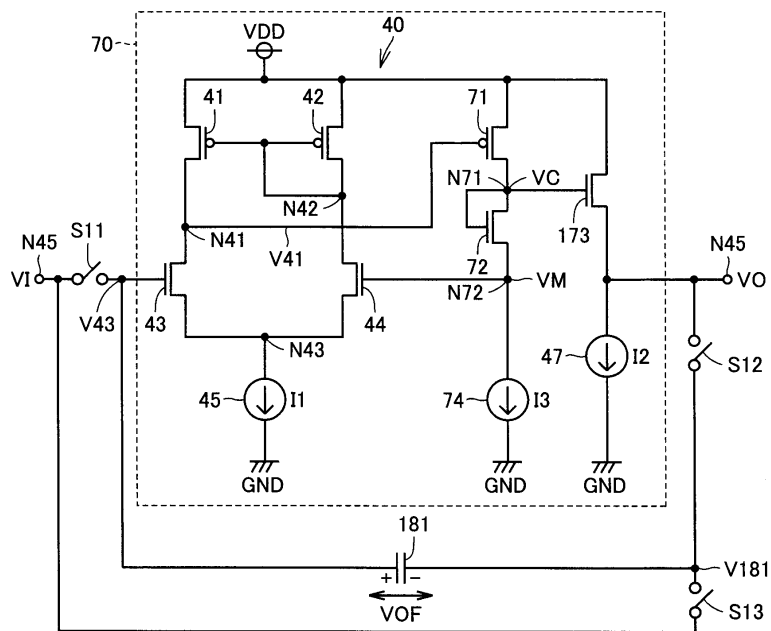
31

175

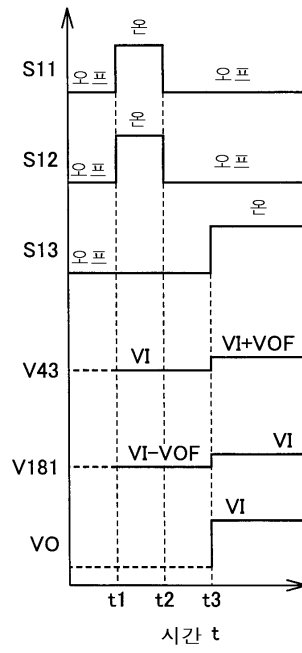


32

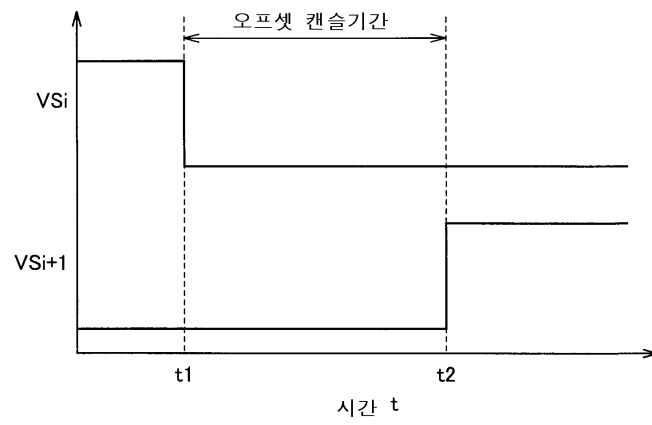
180

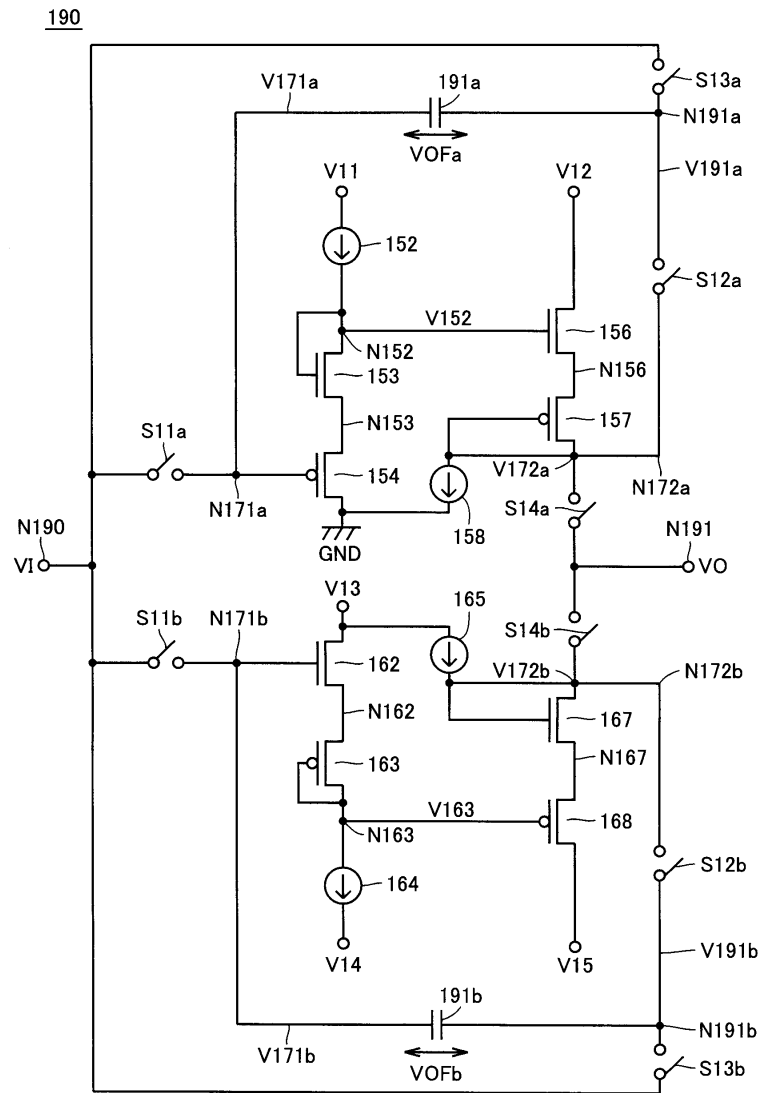


33



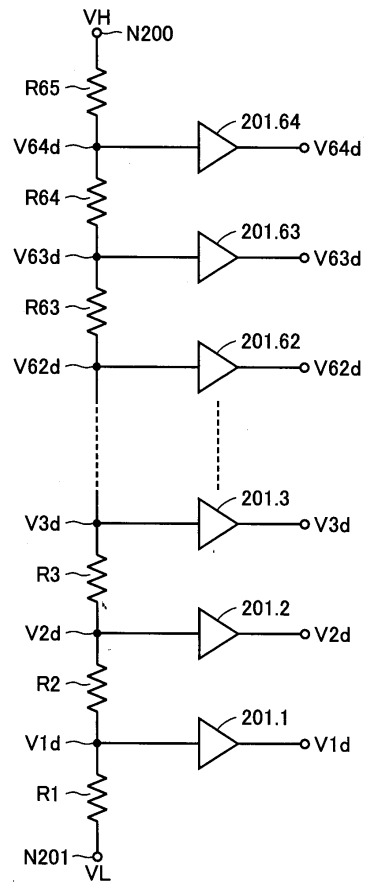
34





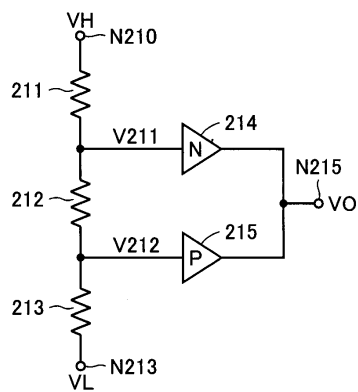
37

200



38

210



专利名称(译)	图像显示装置		
公开(公告)号	KR1020040071691A	公开(公告)日	2004-08-12
申请号	KR1020047008162	申请日	2002-11-20
[标]申请(专利权)人(译)	三菱电机株式会社		
申请(专利权)人(译)	三菱电机有限公司		
当前申请(专利权)人(译)	三菱电机有限公司		
[标]发明人	TOBITA YOUICHI		
发明人	TOBITA, YOUICHI		
IPC分类号	G09G3/20 G02F1/133 G09G3/36		
CPC分类号	G09G3/3291 G09G3/3688 G09G3/3233 G09G2330/021 G09G3/20 G09G2330/028 G09G3/3696 G09G2310/0297 G09G2310/0248		
代理人(译)	权泰BOK LEE HWA我		
其他公开文献	KR100698951B1		
外部链接	Espacenet		

摘要(译)

该有色液晶显示装置的灰度电位产生电路 (24) 包括对应于灰度电位 (V33d~V64d) 的充电能力, 该灰度电位分别高于电阻单元的预充电电位 (VPC) (R1~ R65), 65中产生64的灰度电位 (V1d~V64d), 它对施加在第一和第二节点 (N30, N31) 之间的电压 (VH-VL) 进行电压分压并串联连接, 数据线 (6) 是用于放大高于放电容量的电流 (32) 的第二电路是充电能力, 它分别对应于用于放大高于放电容量的电流 (31) 的第一电路和灰度电位 (V1d~ V32d) 低于预充电电位 (VPC) 。图像显示装置, 灰度电位, 节点, 数据线, 预充电, 晶体管, 穿透电流。

