

(19)  
(12)

(KR)  
(A)

(51) 。 Int. Cl. <sup>7</sup>  
G02F 1/1335

(11)  
(43)

2002 - 0031452  
2002 05 02

(21) 10 - 2000 - 0061931  
(22) 2000 10 20

(71) .  
,  
20

(72) 1 12 201  
1145 640 1204

1027 - 15

2 1027 - 3

313 - 1 212 807

(74)

:

(54) L C D

LCD

4a

LCD, LCD,

1a

1b 1a A - A'

2a

2b 2a B - B'

3a

3b 3a C - C'

4a

4b 4a D - D'

5

\*

401 : 402 :

402a : 402c :

403 : 404 :

405 : 405a :

405b : 405c :

406a : 1 406b : 2

407a : 407b :

408 :

(capacitor)

가 .

가 , 가

가 가 .

가 가 .

가 1

가  
(previous gate)

가 , (flicker)

1a , 2a , 1b 1a A - A' , 2b 2a B - B'

5b) 1a 1b , LCD (101)  
(102a), (105) (102) , (105) (102)  
(103), / (105a/105b) 가 , (10  
(107) (102c) (107) , (109)  
(105c) 가

(102) , (102a) ,  
(102c)

/ (105a/105b) ,

02c) (103) , (102), (102a) (1  
104) (103) / (105a/105b) (

(105), / (105a/105b) (105c)  
 (106) (108) (109) (1  
 07) , (108) (107) ,  
 (109) (107) (105c) .  
 , LCD LCD ( ) .  
 , 2a 2b , (201) (205) (202) ,  
 (205) (202)  
 (206b) , ( ) 1 (206a) , (207a) 2  
 2 (206b) ( ) (207a) (207b) .  
 , (207b) (207a) (207) .  
 , (202) (202a), (204)  
 7a) (205) / (205a/205b) , (20) (20)  
 (205b) (208) .  
 (207) (205c) (202) (202c) (205)  
 (205c) , (205b) (207) 가  
 (209) (205c) (207) 1 (206a)  
 (205c) . ,  
 가 .  
 2a 가 가 (207) (205c) 가 .  
 가 (208)  
 (retardation) (208) ( ) ,  
 , LCD , 1  
 가 .  
 , LCD

LCD

LCD

3a, 3b, 3a C - C', 4a, 4b, 4a D - D'

3a, 3b, LCD (301), (302), (302a), (302c), (303), (302), (305), (305a), (305b), (305b), (302), (305c), (307), (306), (306), (306), (308), (205b)

(302a), (304), (302c), (305c), (304) / (305a/305b), (amorphous silicon thin film transistor ; a - Si:H T FT)가

a), (305b), (302), (302a), (302c), (305), (305), (305c), (Cr), (Mo), (Al), (Sn), (C u)

(307)

(303), BCB(Benzocyclobutene), (Acrylic resin)

(306)

RC

LCD (402), 4a, 4b, (401), (402a)

(405c), (403)

(402), (405a), (405b), (405b), (405b), (405b), (405b)

05c), (403) / (405a/405b)

( ) (404) , (407a) , 1 (406a) , 1 (406a)  
1 (406a) (405b) (407a)  
(406b) , 2 (408) , (407a) 2  
(407b) ( )

, (407a) (407b) (407) , 2 (406b)

a) (407b) 5% (ITO: Indium Tin Oxide) , (407  
(Ta) , 2 (406b) BCB

, (404) (Amorphous Silicon:a - Si) PECVD(Plasma Enhanced C  
hemical Vapor Deposition) , , ,  
( , , , )

, (405b) (405c) (405a) (cross  
talk) , ( ) ( ) .

, LCD

5 , (405c) ( )

LCD

LCD 가 .

, LCD , ,

, LCD ,

(57)

1.

;

;

;

LCD

.

2.

D 1 . ,

LC

3.

1 ,  
LCD .

4.

,

;

;

;

;

LCD

.

5.

4 ,

LCD .

6.

4 ,  
LCD .

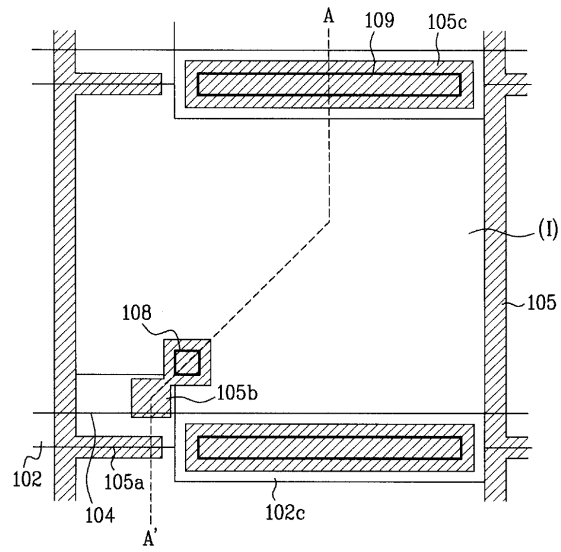
7.

4 ,

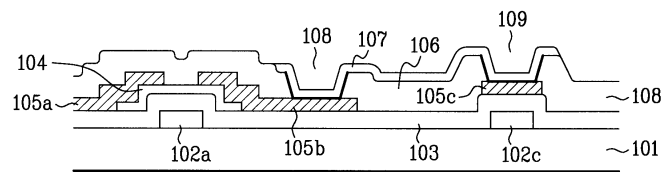
LCD

.

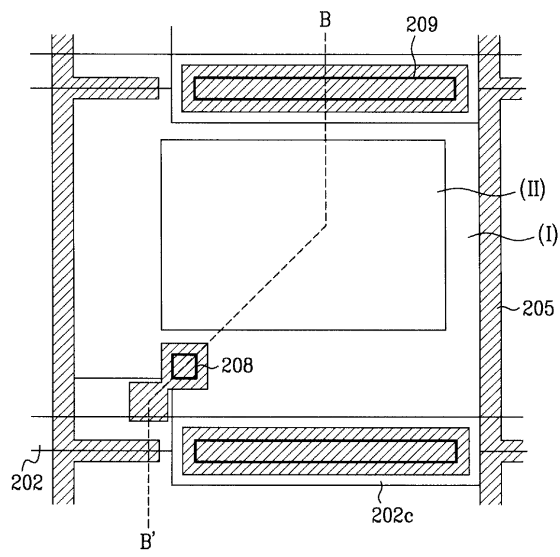
1a



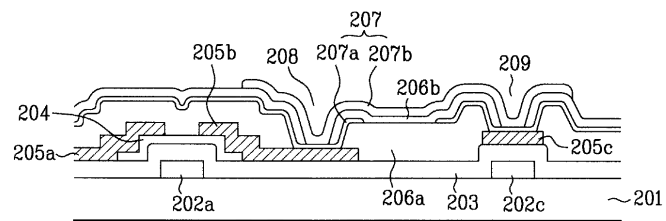
1b



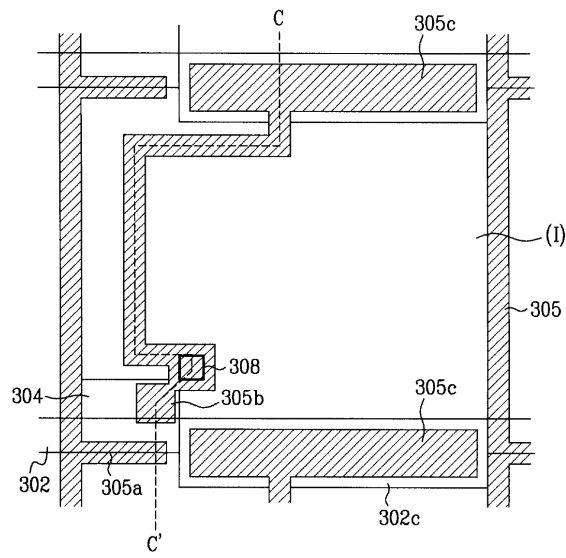
2a



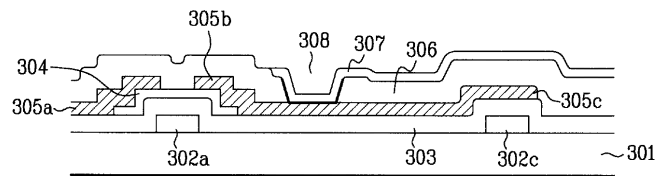
2b



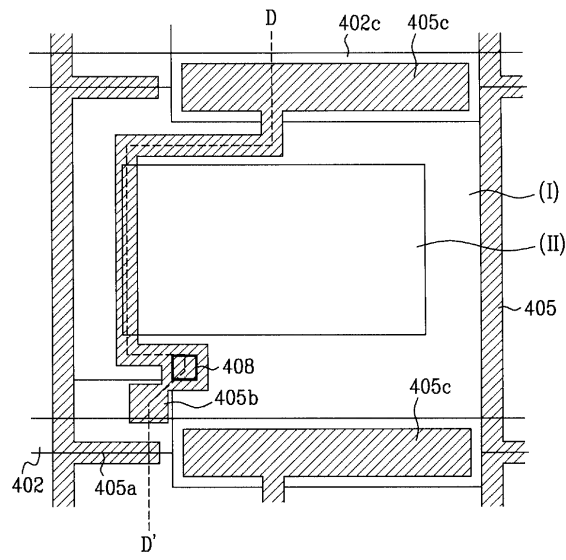
3a



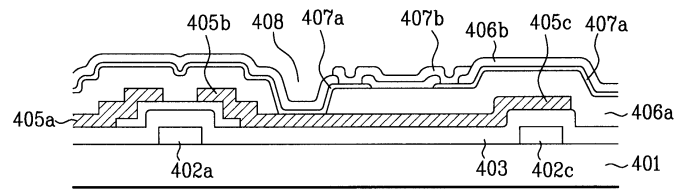
3b



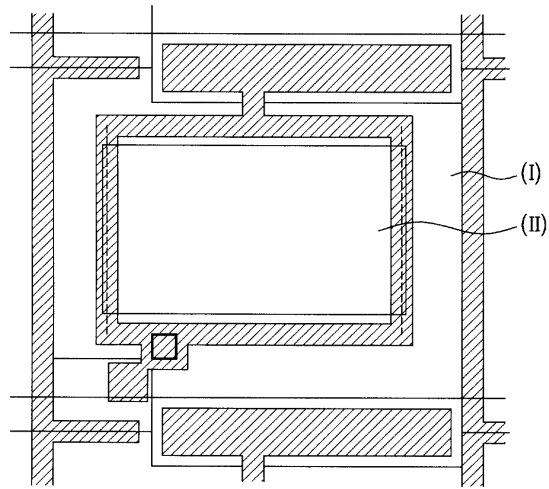
4a



4b



5



专利名称(译)	反射式和半透反射式LCD的结构		
公开(公告)号	<a href="#">KR1020020031452A</a>	公开(公告)日	2002-05-02
申请号	KR1020000061931	申请日	2000-10-20
[标]申请(专利权)人(译)	乐金显示有限公司		
申请(专利权)人(译)	LG显示器有限公司		
当前申请(专利权)人(译)	LG显示器有限公司		
[标]发明人	KIM DONGGUK 김동국 KIM WOONGKWON 김웅권 HA KYOUNGSU 하경수 BAEK HEUMEIL 백흠일 KIM YONGBEOM 김용범		
发明人	김동국 김웅권 하경수 백흠일 김용범		
IPC分类号	G02F1/1362 G02F1/1335		
CPC分类号	G02F1/133555 G02F1/136213		
代理人(译)	金勇 新昌		
其他公开文献	KR100628257B1		
外部链接	<a href="#">Espacenet</a>		

摘要(译)

本发明涉及透反射LCD的结构和在存储电容器上不形成存储接触孔的反射。并且它包括形成在存储上电极上的反射电极，形成在栅极布线上的存储电容器，其与漏电极一体形成并且与像素区域相连，并且连接到多个栅极布线的漏电极。数据线交叉排列并限定形成在栅极布线和数据线的交叉区域中的像素区域和薄膜晶体管，以及薄膜晶体管。反射型液晶显示器，透射反射型LCD和存储电容器。

