

(19)
(12)(KR)
(B1)(51) 。 Int. Cl.⁷
G02F 1/1337(45)
(11)
(24)2003 12 31
10-0413743
2003 12 19(21) 10-2000-0002309
(22) 2000 01 19(65)
(43)2000-0053522
2000 08 25

(30) 1999-012279 1999 01 20 (JP)

(73) 가 가 2 5 5

(72) 가 8-41-7

1-34-1

(74)

:

(54)

3

1
2
3

4
5
6 가
7
8
< >
1, 3, 4, 53 :
2, 5, 58 :
6, 55 :
7 :
63 :

actor, SC (Liquid Crystal Display : LCD) , (Storage Cap
가) 가
, 2
, 1 , 5 (a) , 5 (b) A-A'
, 1 (50) , (51) , (51)
) , (52) , (a-Si) (51)
, : 53 , (52) , SC (53) , (SC)
, (52) (Thin Film Transistor : TFT)
(54) , (54) , ITO (indium tin oxide) (55)
(54) SC (53) (b) (56)
(56) , 가 (54) , 2
(57) (57) TFT (52) , SC (53)
(55) (57) , (55)
1 (50) 2 (60) , ITO (61) (55)
(61) , 1 (50) (62) , 가
1 (50) 2 (60) , (70) , (55) (61) 가
, 1 (50) 2 (60)
, (70)
(70) , 가
(56, 62) , (70) , (70)
(56, 62) , 가 (70)
, (70) , 가
, (55) , (51) (57) TFT 가 , 가
, (55) , 가 LCD , (55)
가 , 가 (55) SC (53) TFT , 가
가 , 가
, SC (53) , LCD , (55) (61) 가
가 , 가 , 가
(55) (61) , SC (53) ,
(SC) (58) , SC (53) ,

(55) . SC (58) , SC (53) (58a) , SC (53) (55)
 (61) (70) , SC (53) SC (58) (55)
 (52) TFT (57) .
 , LCD
 , LCD 5-84696 ,
 LCD가 7 (a) LCD SC (53)
 7 (b) A-A' 5 LCD , 1 (50) TFT (53)
 (55) (60) (70) ,
 (61) 5 LCD (63) (56, 62) 가
 (63) , 「Y」
 , (55) (61) 가 , (64, 65)가 , (59)
 (55) , (64) , (55) (61)
 가 , (63) , (65) (55)
 (55) (63) (61) 가 가 (63)
 , 5 LCD LCD , 가
 8 , 2 LCD (59) , (59) , (63) (63)
 가 , 10
 -337840
 2 , LCD (56, 62)
 (63) , (70)
 6-104044
 , (SC) (53) SC . SC , (55)
 , SC 가 , LCD , 가
 , 가 LCD , 가
 (56, 62) LCD ,
 , LCD LCD
 1 , 1 , 1 2 , 1
 2 ,

1 (a) 1 (b) A-A' LCD

(52) SC (1) , TFT (50) (51) (55) , SC (1) (56) (57) 2 (54) (60) (61) , 가 (63) (62) (61) , (70) (55)

1 (50) 2 (60) , SC (2) , SC (1) (61) 가 (55) (55) , SC (1) SC (2) (1a) (55) SC (1) (1a) , SC (2) SC (2) (1a) , SC (2) SC (1) SC (1) SC (1a) , SC (1) SC (2) (70) , SC (1) , SC (1a) , SC (1) SC (2) (57) , 가 , SC (1a) , SC (57) SC (3) , 1 SC (1) (63) (59) (59) (59) (59) (4b) (5) (4a) , (5a) , (58) , 가 가 (5) , SC (4) , SC (5) , SC (4) , SC (58) , SC (58) , 가 가 (6) 가 (7a) , (7a, 7b)가 (7b) 가 (8) , SC (9) LCD , (63) LCD LCD 가가 LCD 가

5 가

1 2 ,
 1 2 ,
 ,
 ,
 ,
 ,
 .

10.

,
 ,
 1 1 ,
 1 2 ,
 ,
 ,
 ,
 .

11.

7 10 ,
 ,
 ,
 .

12.

7 10 ,
 1 2 ,
 , 1 2 ,
 .

13.

7 10 ,
 ,
 .

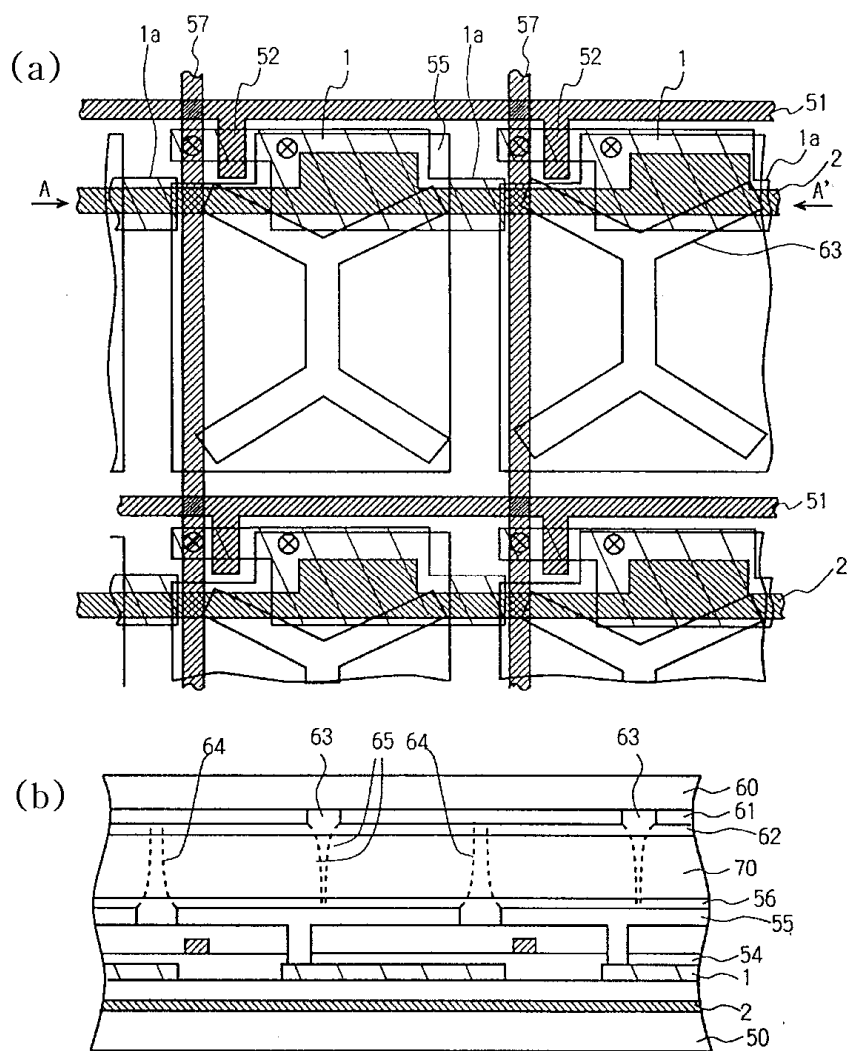
14.

13 ,
 ,
 .

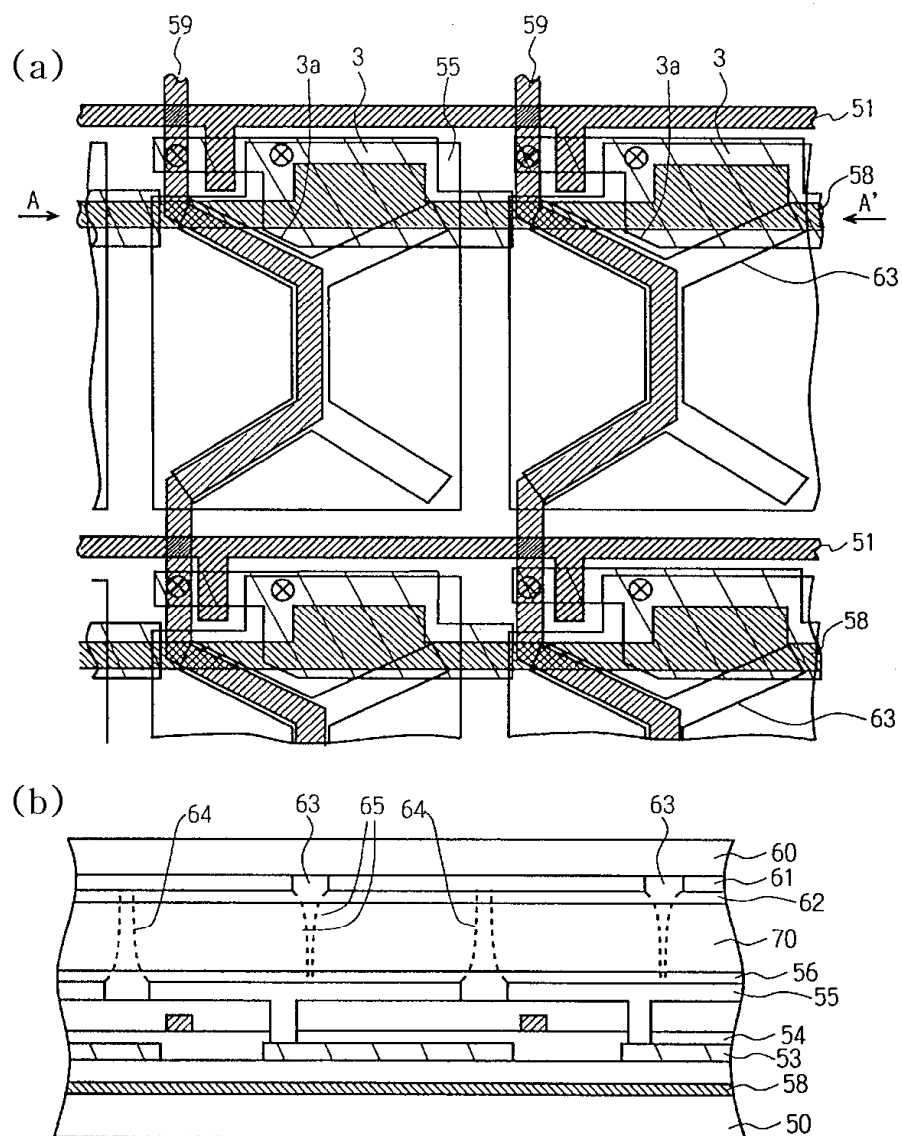
15.

14 ,
 ,
 .

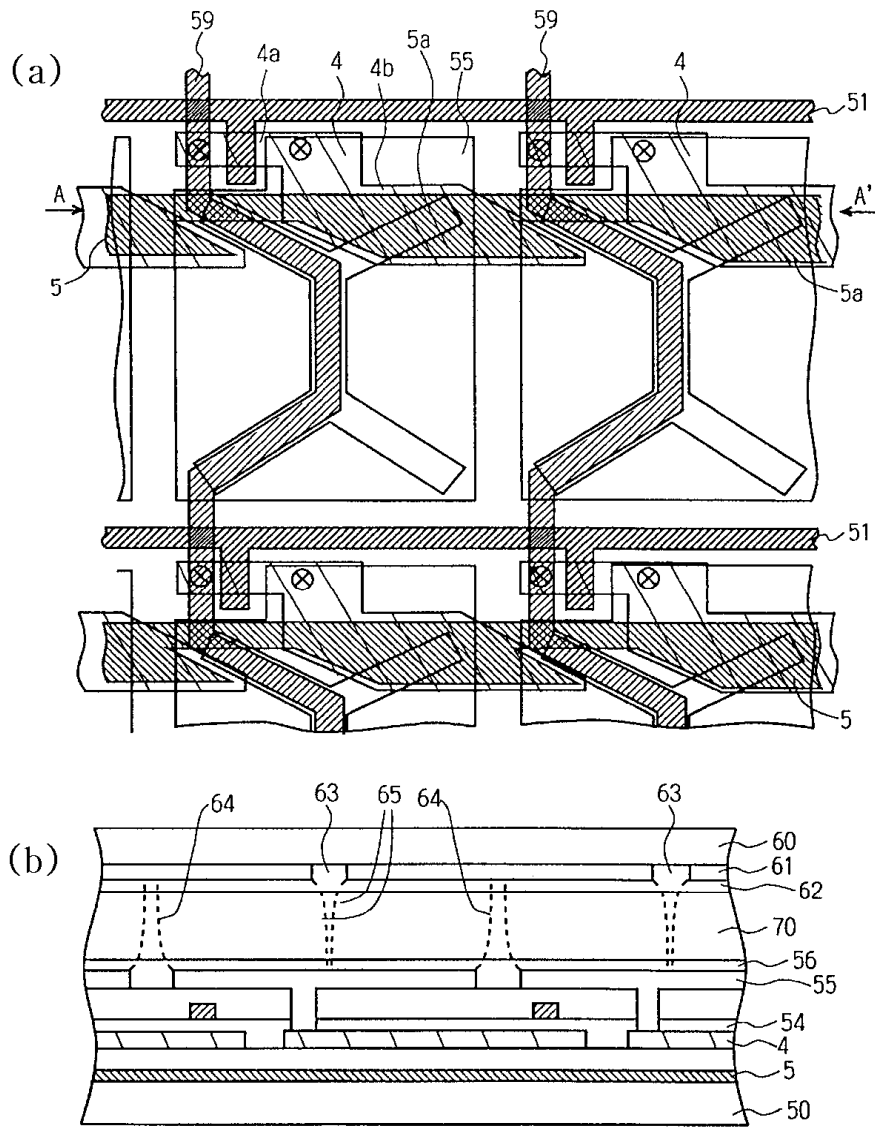
1



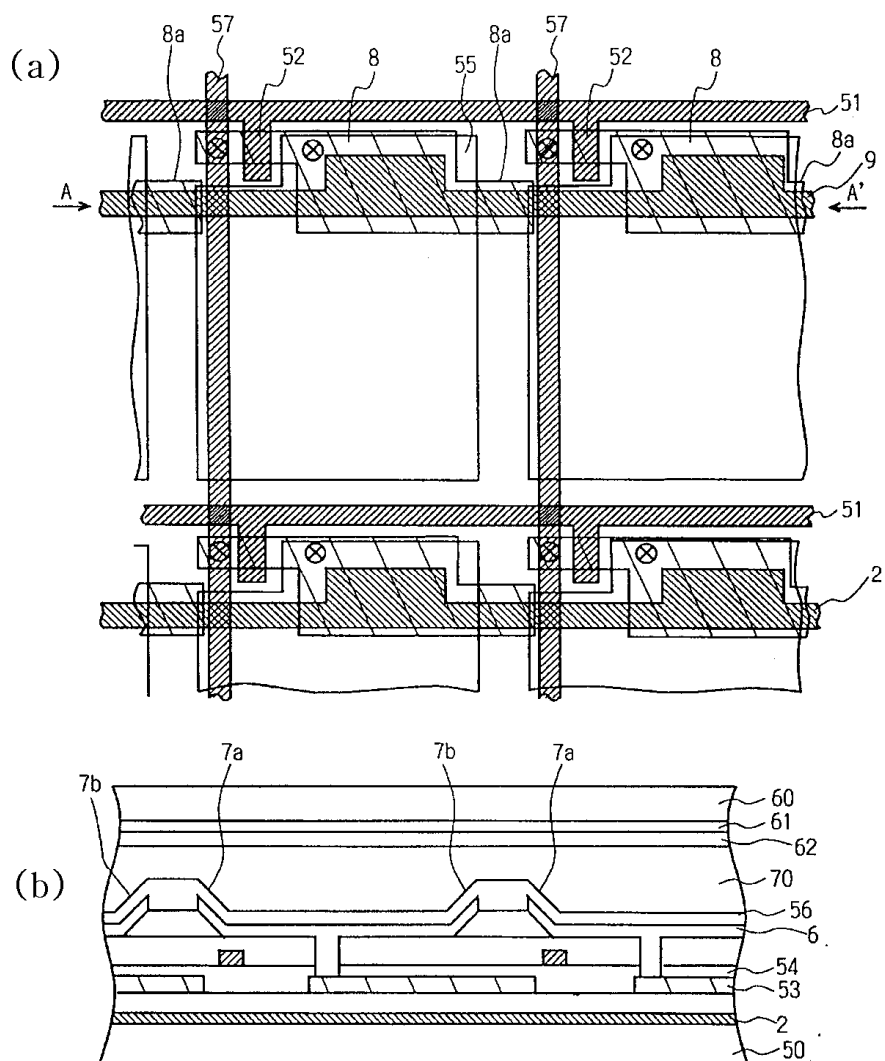
2



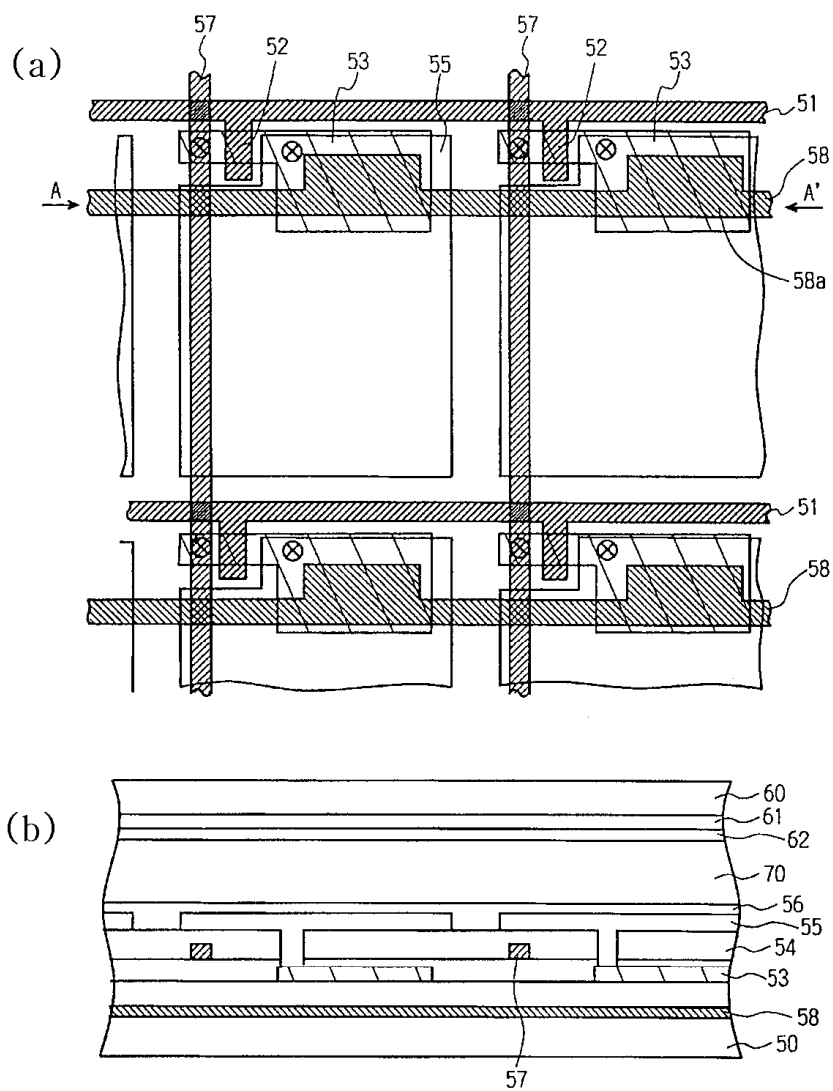
3



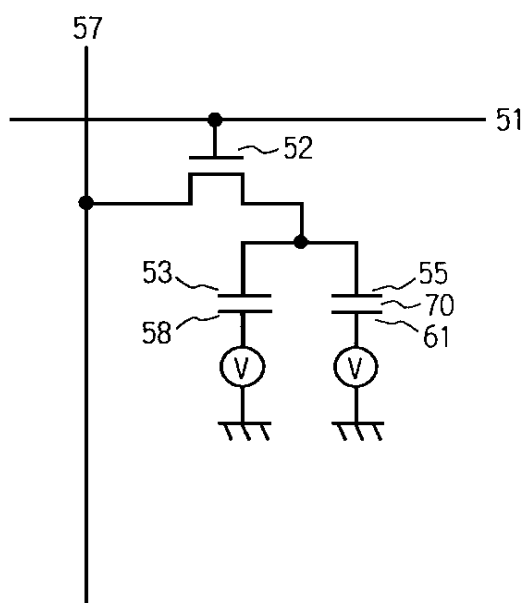
4



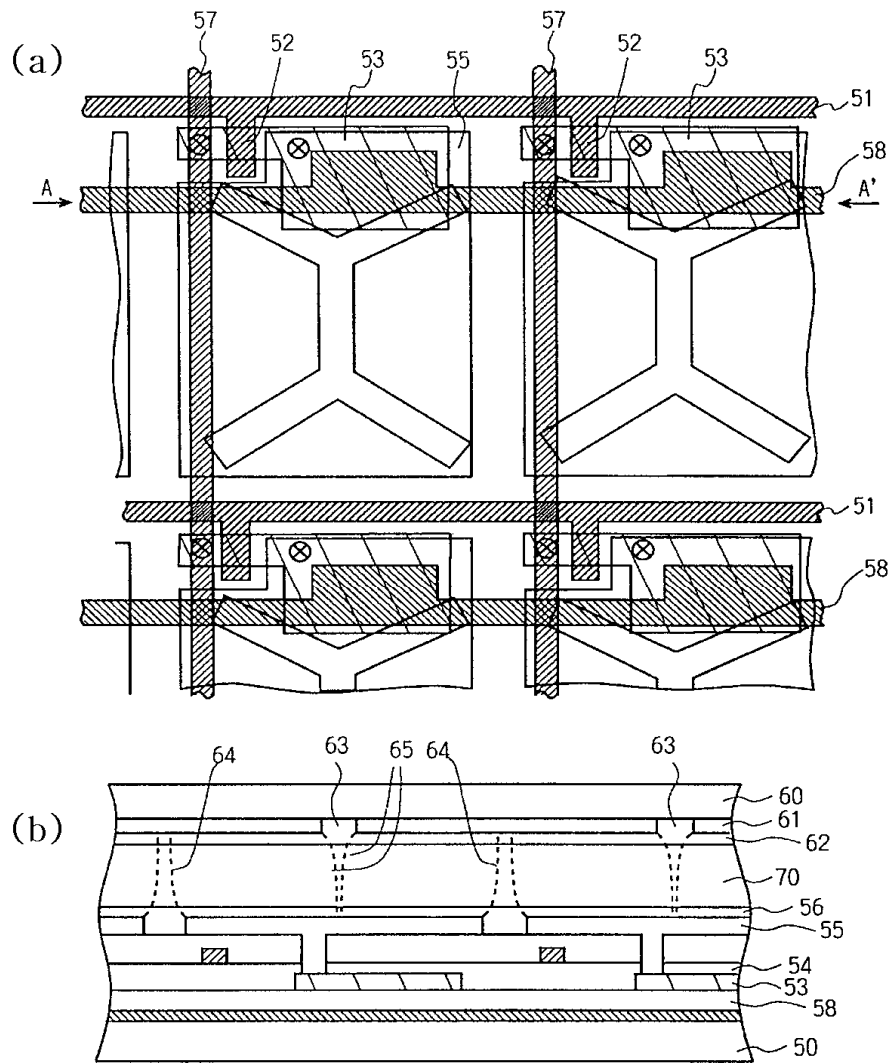
5



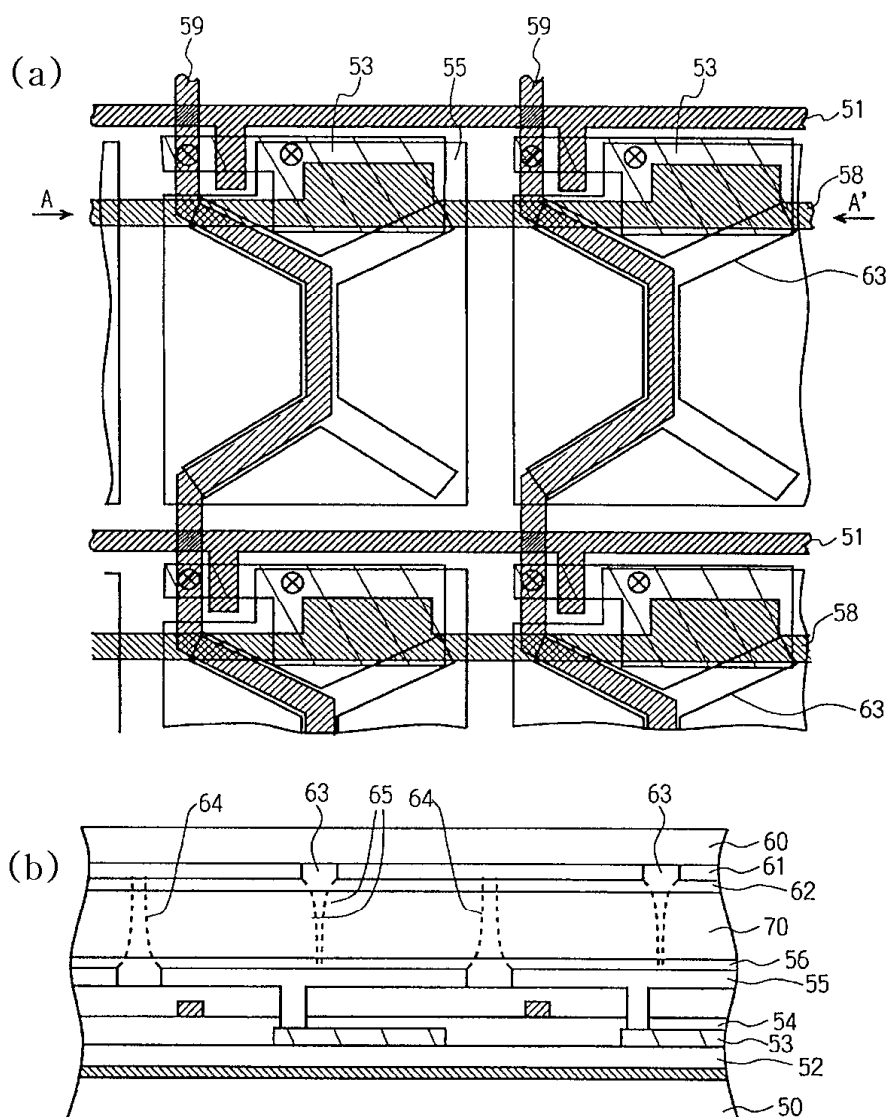
6



7



8



专利名称(译)	垂直对准型液晶显示器		
公开(公告)号	KR100413743B1	公开(公告)日	2003-12-31
申请号	KR1020000002309	申请日	2000-01-19
[标]申请(专利权)人(译)	三洋电机株式会社 山洋电气株式会社		
申请(专利权)人(译)	三洋电机有限公司是分租		
当前申请(专利权)人(译)	三洋电机有限公司是分租		
[标]发明人	NISHIKAWA RYUJI 니시가와리우지 MIYAJIMA YASUSHI 미야지마야스시		
发明人	니시가와리우지 미야지마야스시		
IPC分类号	G02F1/1337 G02F1/1368 G02F1/139 G02F1/1362 G02F1/1333 G02F1/137 G02F1/136 G02F1/1343		
CPC分类号	G02F2001/133738 G02F2001/13712 G02F1/136213 G02F1/133707 G02F1/1393		
代理人(译)	CHANG, SOO KIL		
优先权	1999012279 1999-01-20 JP		
其他公开文献	KR10200000053522A		
外部链接	Espacenet		

摘要(译)

对于具有控制组合方向的装置的垂直对准的LCD，包括取向控制窗口或取向控制斜面部分等，提供了具有高显示质量的液晶显示器，而没有辅助容量线的取向控制中断。由辅助电容电极产生的电场布置在辅助电容线和在像素间隔上延伸的液晶之间被屏蔽。垂直对准的LCD，取向控制窗口，取向控制斜面部分，辅助电容电极，电场的遮挡。

