

(19)
(12)

(KR)
(A)

(51) 。 Int. Cl. ⁷
G02F 1/136

(11)
(43)

2002 - 0045256
2002 06 19

(21) 10 - 2000 - 0074639
(22) 2000 12 08

(71) .
,
20

(72) 3 1407 - 77

103 - 1108

(74)
:

(54)

(Color filter on array)

(link I

ine : " ") .

가

4e

1 ,

2 COT ,

3a 3d 2 - ` - ` ,

4a 4e , - ` - ` .

< >

- 100 : 114 :
- 113 : 113c:
- 115 : 115c :
- 133 : 135 :
- 137 : 148 :
- 149 : 151, 153 :

(Liquid Crystal Display device: LCD)

(Thin Film Transistor : TFT)

가 , 가 가

(Active Matrix LCD : AM - LCD)가

가

(2, 4) (20) (10) (2, 4) ,
 (20) 가 (4) (10)
 가 (2) .
 (4) (8) , (8) (12)
 가 (12) (10) 가 (S) 가 (10) (2)
 가 (S) 가 (10)
 (14) (P) .
 , (4) (2) (10) , (4)
 (2) 가 (sealant : 6)
 (2) (S) (14)
 가 ,
 가 ,
 가 가 가 가

" TFT(Color Filter on TFT ; " COT") "

COT
 (RED), (GREEN), (BLUE)

00 - 74191

COT

, 2 COT

(13) , (13)
 (P) (15) .
 (19)가 (13) (15) 가 (17)
 , (13) (21) (17) , (15)
 (23) (19)

(S)가 , (31) (P) (33) (35) (37) (14)

(P) (7)가 , (7)

(14) (電着電極) (black matrix)(8)가 (7)

(15) (23) (S) (8) (14) (21) (13)

(printing) (sealant)

3a 3d

3a 3d 2 - -

3a (20) (2 13) (S) (

2 15) , (S) (31) , (31) 1 (34)

(介在) (37) , (37) (31) (31)

(33,35)

(31) (2 13) , (13) (17)

(13) (link line)(21) (17)가 (13) (17)

(33) (35) (15) (31) , (33)

(19)가 (15) (2 23)

(printing) (21) (23) , (sealant)가

3b (coating) (15) (deposition) 2 (20) (41)

(41) (35) (

43) , (17) (2 19) (2 19) (45) , (2 47)

(14) (41) (17) (51) (35)

(2 19) (53)

3c (14) (20) (8)

(17) (21) (2 13) (15) (2 19) (2 2

3) (8)

(8) (" ")가

(8) (20) (2 P)

(20) 1

2 3 (7)

(57)

3d

(21) (2 21)

8) (21) (23) (34,41) (

(57)

(: resin) 가

가

1

1

(IZO)

(ITO)

(電着)

가

4a 4e

4a 4e

4a (Mo), (Cu) (113)

(100) (113)

(Al),

(AlNd), (131)

(Cr),

(W),

(113) 가 (113b) , (113a) , (113a) (113b)
 (113c) .

(113) (100) (SiO₂) (SiN_x)
 (Benzocyclobutene) (Acryl) (resin)
 , 1 (121) .

(2 113) (121) (a - Si:H)(137a)
 (n+a - Si:H)(137b) (137) .

(137a) (active channel) ,
 (137b) (ohmic contact layer)

(137) (100)
 (115) (113) (P) (115) ,
 (131) (133) , (133)
 (135) .

(115) (115a) ,
 (115b) , (115a) (115b)
 (115c) .

4b , (115) (100) , 2
 (123) .

(123) (135) , (135)
 (143) , (113b) (143) , (1)
 15b) (145) .

4c , (100) - - (ITO)
 (IZO) ,
 (135) (114) , (113b) (148) ,
 (115b) (149) , (113c)
 (115c) (151,153) .

(151,153)
 (151, 153) .

4d , (114) (148,149)가 (100)
 (Cr) , (black matrix : BM)(
 155) .

(155) (114) (115) (113)
 , (118) (電
 蝕)

, (114) (155) (100) , ,
1 . , (114)
; , (118) .

(118) , (118) , 가
(Acryl) (resin) (157)

4e (155) (157)
(148) (149) (151,153)
(113c,115c)

(157) (155) , (113)
(113b) (115b) (148,149)가 ,
c) (115c) (151,153) .

, (155) (121) .
(151,153) , (113c,115c)
(113c,115c)
() (121) (123) .

, COT , , () ,

, () () .

가 COT , ,

, 가 ,

, 가 .

, 가 .

(57)

1.

;

12.

9

,

1

,

,

.

13.

9

.

(benzocyclobutene)
(SiO₂)

(Acryl)
(SiN_x)

(resin)

,

.

14.

9

,

.

15.

9

,

(carbon)

.

16.

9

,

.

17.

16

,

- -

(ITO)

- -

(IZO)

.

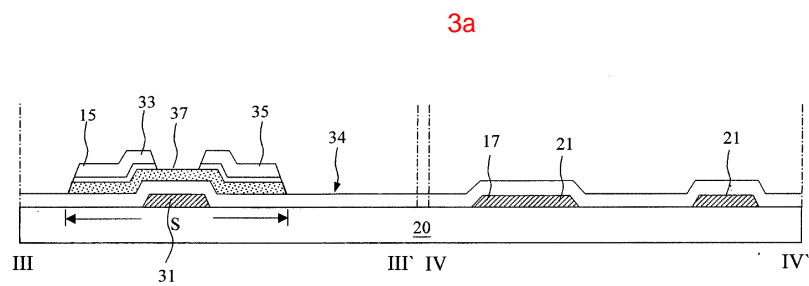
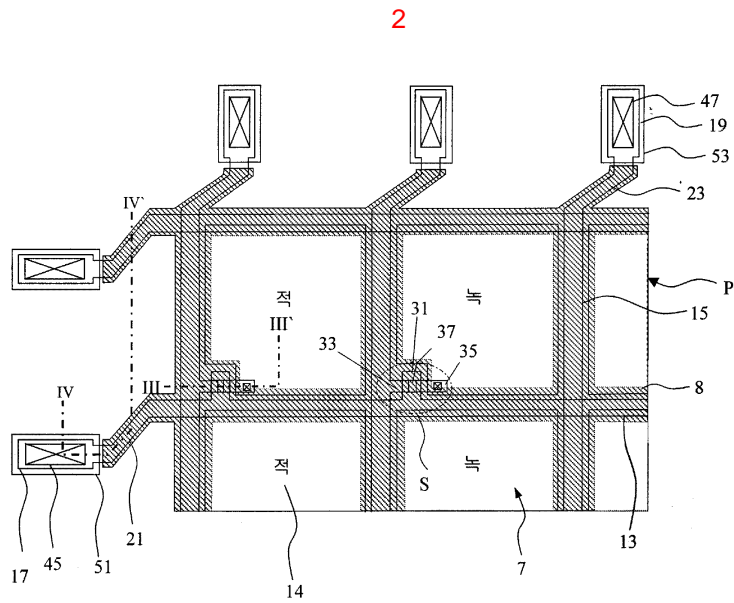
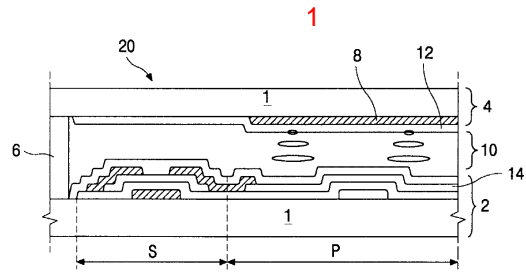
18.

9

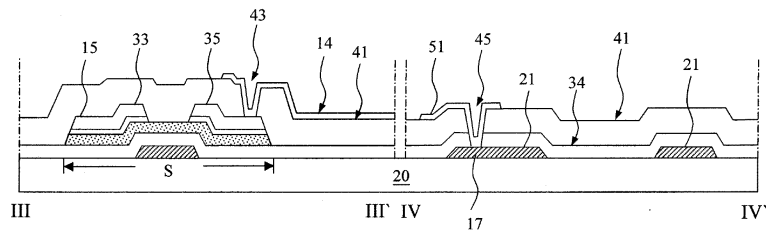
,

(電着)

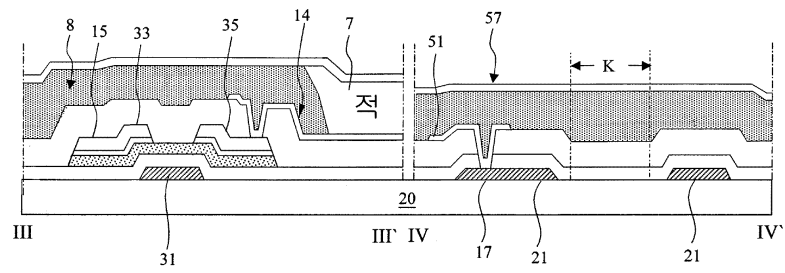
.



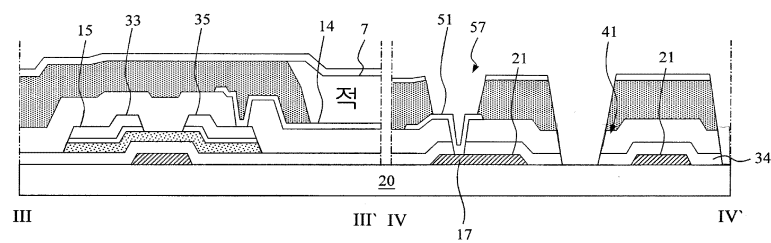
3b



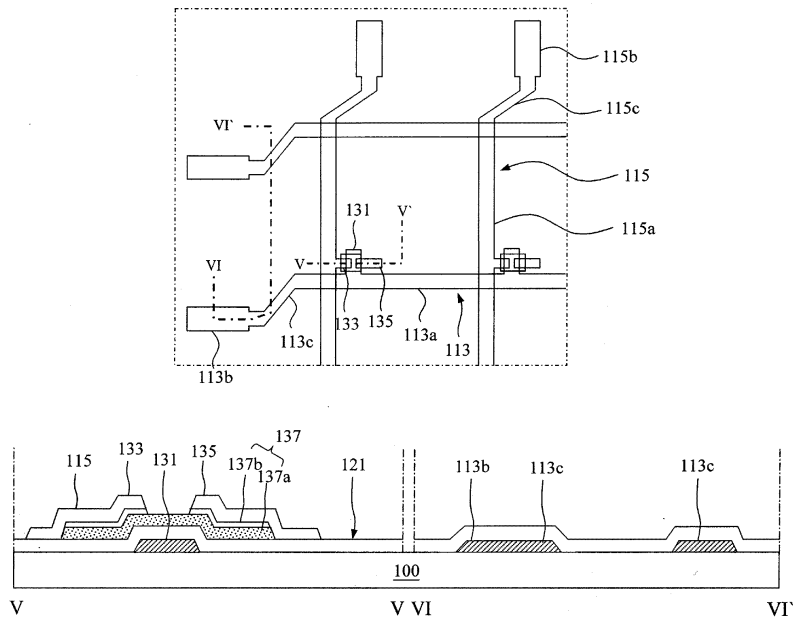
3c



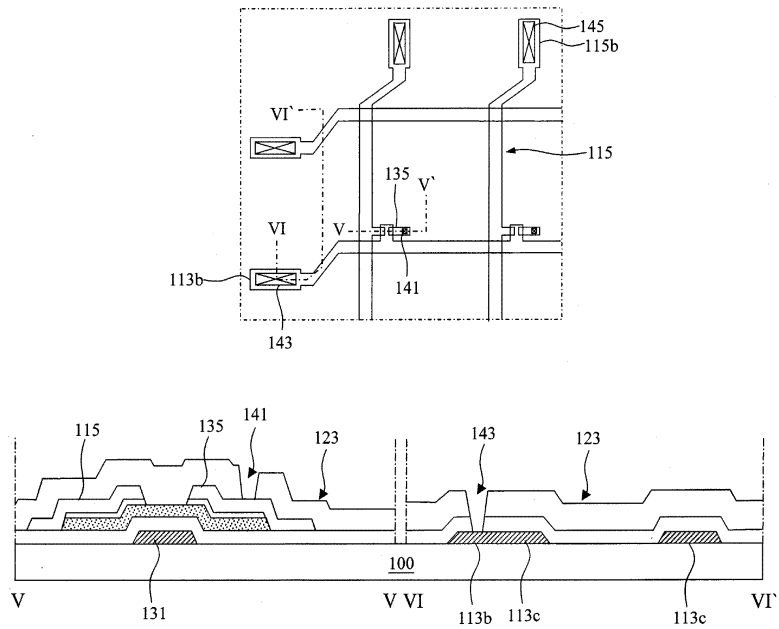
3d



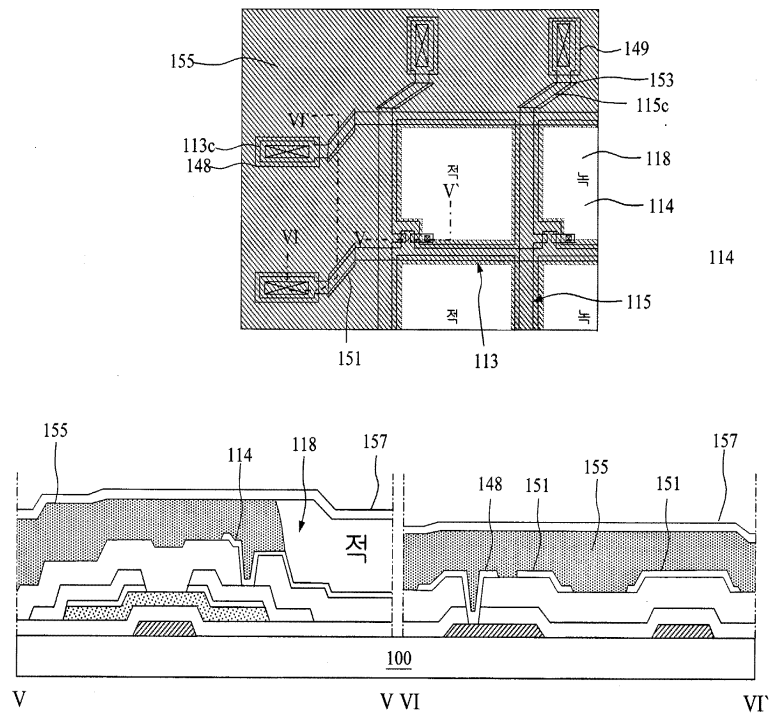
4a



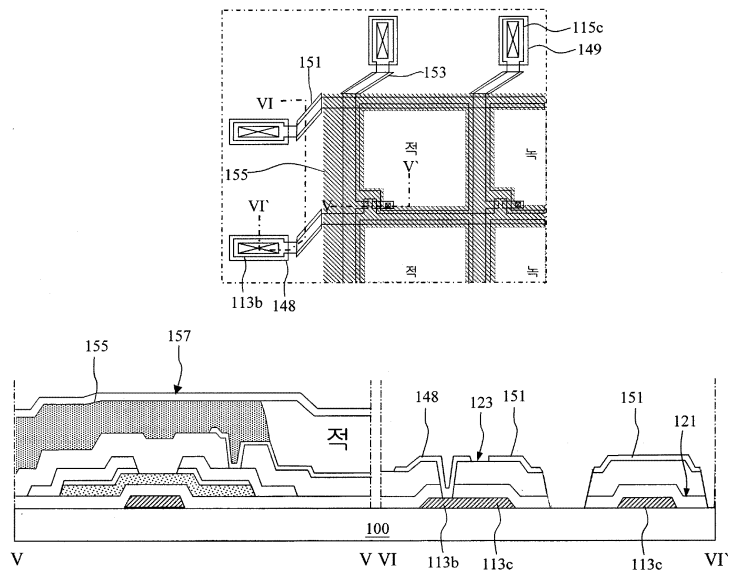
4b



4d



4e



专利名称(译)	用于液晶显示器的阵列基板和制造阵列基板的方法		
公开(公告)号	KR1020020045256A	公开(公告)日	2002-06-19
申请号	KR1020000074639	申请日	2000-12-08
[标]申请(专利权)人(译)	乐金显示有限公司		
申请(专利权)人(译)	LG显示器有限公司		
当前申请(专利权)人(译)	LG显示器有限公司		
[标]发明人	LEE JAE GU 이재구 KWAK DONG YEUNG 곽동영		
发明人	이재구 곽동영		
IPC分类号	G02F1/136		
其他公开文献	KR100643561B1		
外部链接	Espacenet		

摘要(译)

本发明涉及一种连接布线部件(以下称为“链接模块”,带有连接线:),其配置在用于液晶显示器的阵列基板中的多个栅极布线中,其带有滤色器,用于组装上部的滤色器阵列的一部分(阵列上的滤色器)结构,尤其是薄膜晶体管和数据线的阵列面板。***,保留了包括在栅极布线的每个链接模块的上部中的有机层和与滤色器一起的数据线的有机层。在连接模块中印刷的粘合剂的粘合力以便附着基板并不差。因此,如果密封剂和基板的提升出现并且注入液晶,则产生液晶向外部排出的故障。本发明涉及防蚀膜,金属层的金属层更多地形成在这种连接模块上部的绝缘层上。并且使用干法蚀刻有机层的方法。这样,在去除下侧和有机层的过程中,可以保护下部的链接模块。同时降低基板边缘的阶梯式滑轮的效果更有希望。因此,可以制造具有可靠性的液晶面板。

