



US 20190259350A1

(19) **United States**(12) **Patent Application Publication** (10) **Pub. No.: US 2019/0259350 A1**
(43) **Pub. Date: Aug. 22, 2019**(54) **GATE DRIVING CIRCUIT AND DISPLAY APPARATUS HAVING THE SAME****Publication Classification**(71) Applicant: **Samsung Display Co., Ltd.**, Yongin-Si (KR)(51) **Int. Cl.**
G09G 3/36 (2006.01)
G11C 19/28 (2006.01)(72) Inventors: **JIN JEON**, SUWON-SI (KR);
HYUNG GUEL KIM, YONGIN-SI (KR); **DONG HWAN KIM**, SUWON-SI (KR)(52) **U.S. Cl.**
CPC **G09G 3/3692** (2013.01); **G09G 3/3677** (2013.01); **G09G 3/3648** (2013.01); **G06F 3/1423** (2013.01); **G09G 2300/0842** (2013.01); **G09G 2310/0281** (2013.01); **G11C 19/28** (2013.01)(21) Appl. No.: **16/398,986**(22) Filed: **Apr. 30, 2019**(57) **ABSTRACT****Related U.S. Application Data**

(60) Continuation of application No. 14/994,739, filed on Jan. 13, 2016, now Pat. No. 10,283,070, which is a continuation of application No. 13/307,440, filed on Nov. 30, 2011, now Pat. No. 9,269,317, which is a division of application No. 12/050,442, filed on Mar. 18, 2008, now Pat. No. 8,085,235, which is a division of application No. 10/832,631, filed on Apr. 27, 2004, now Pat. No. 7,369,111.

Foreign Application Priority DataApr. 29, 2003 (KR) 10-2003-0027087
Nov. 18, 2003 (KR) 10-2003-0081525

A liquid crystal display apparatus including a gate driving circuit disposed on a liquid crystal display is provided. The apparatus further includes a data driving chip, disposed on the liquid crystal display panel, to apply data driving signals to data lines. The gate driving circuit includes a plurality of stages connected to one another in parallel. The odd-numbered stages of the stages each apply gate driving signals to odd-numbered gate lines of the gate lines, in response to a first clock signal and the even-numbered stages of the stages each apply the gate driving signals to even-numbered gate lines of the gate lines, in response to a second clock signal having an opposite phase from a phase of the first clock signal.

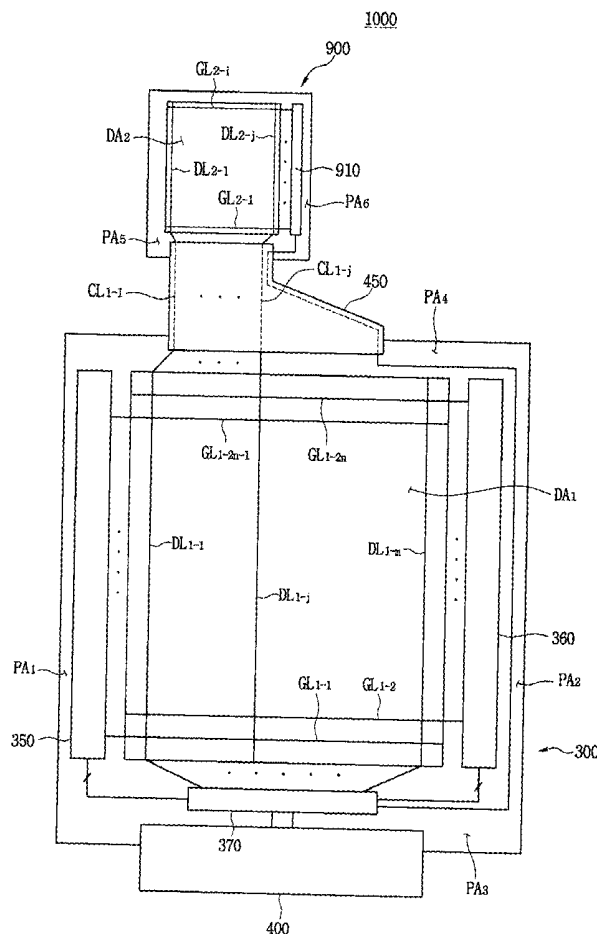


FIG. 1

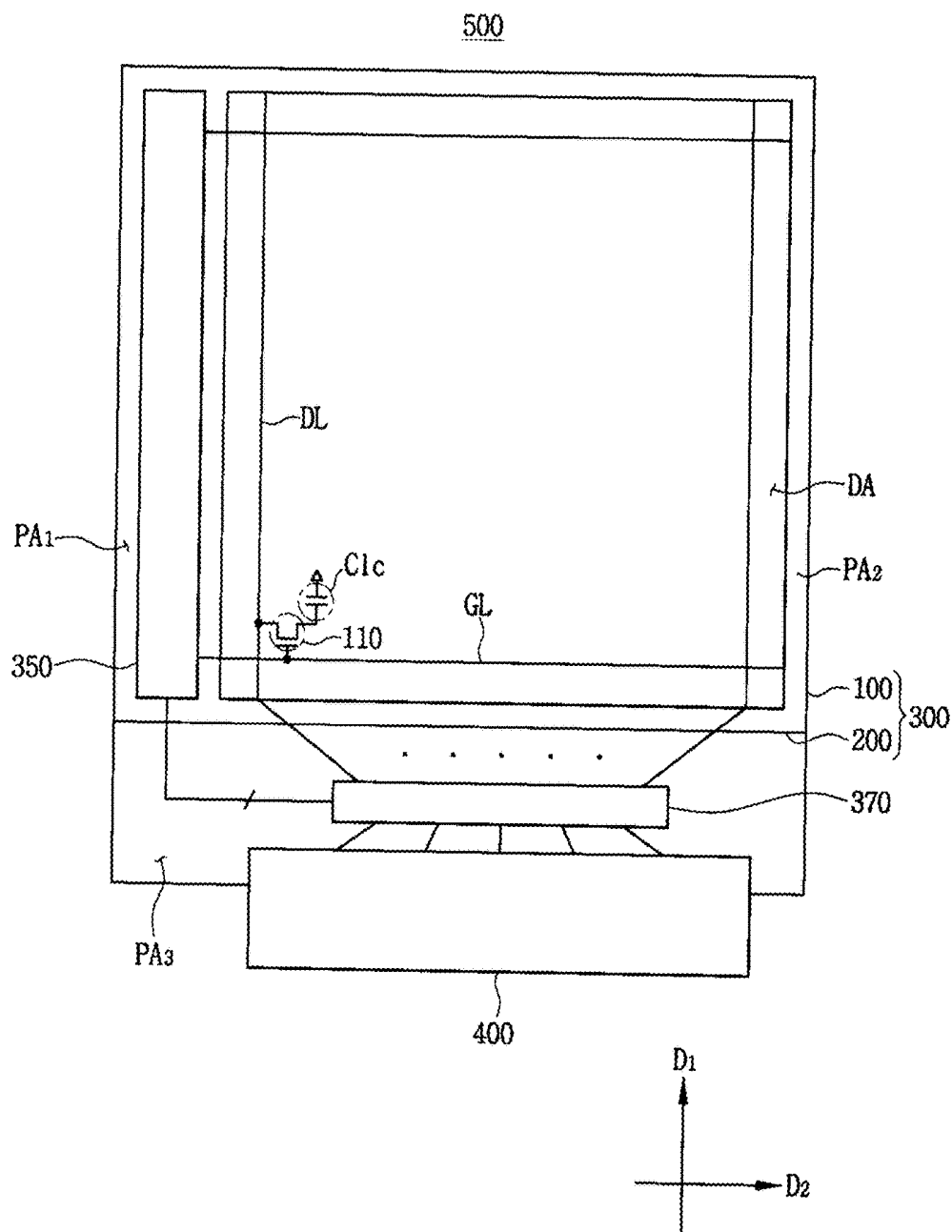


FIG. 2

350

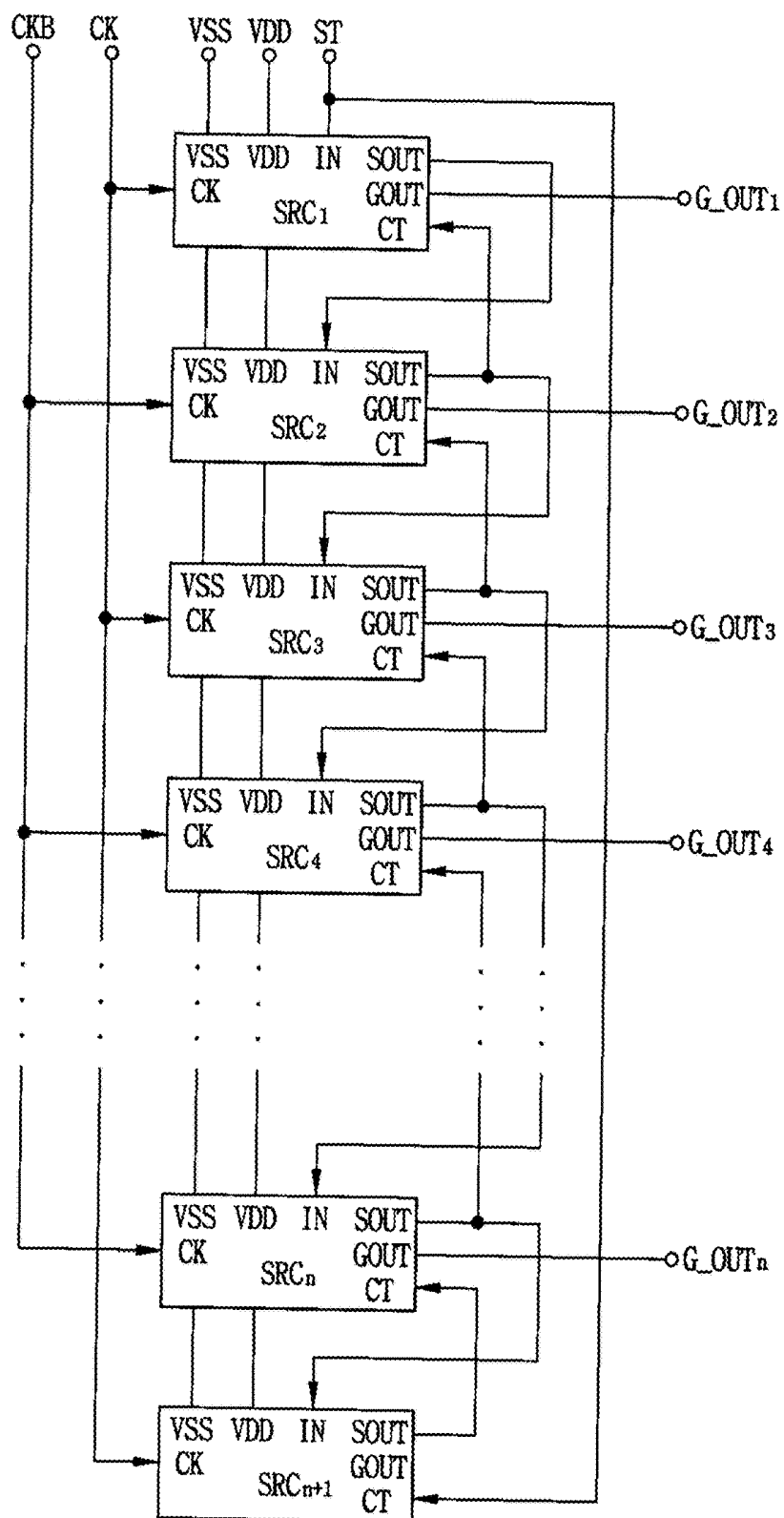


FIG. 3

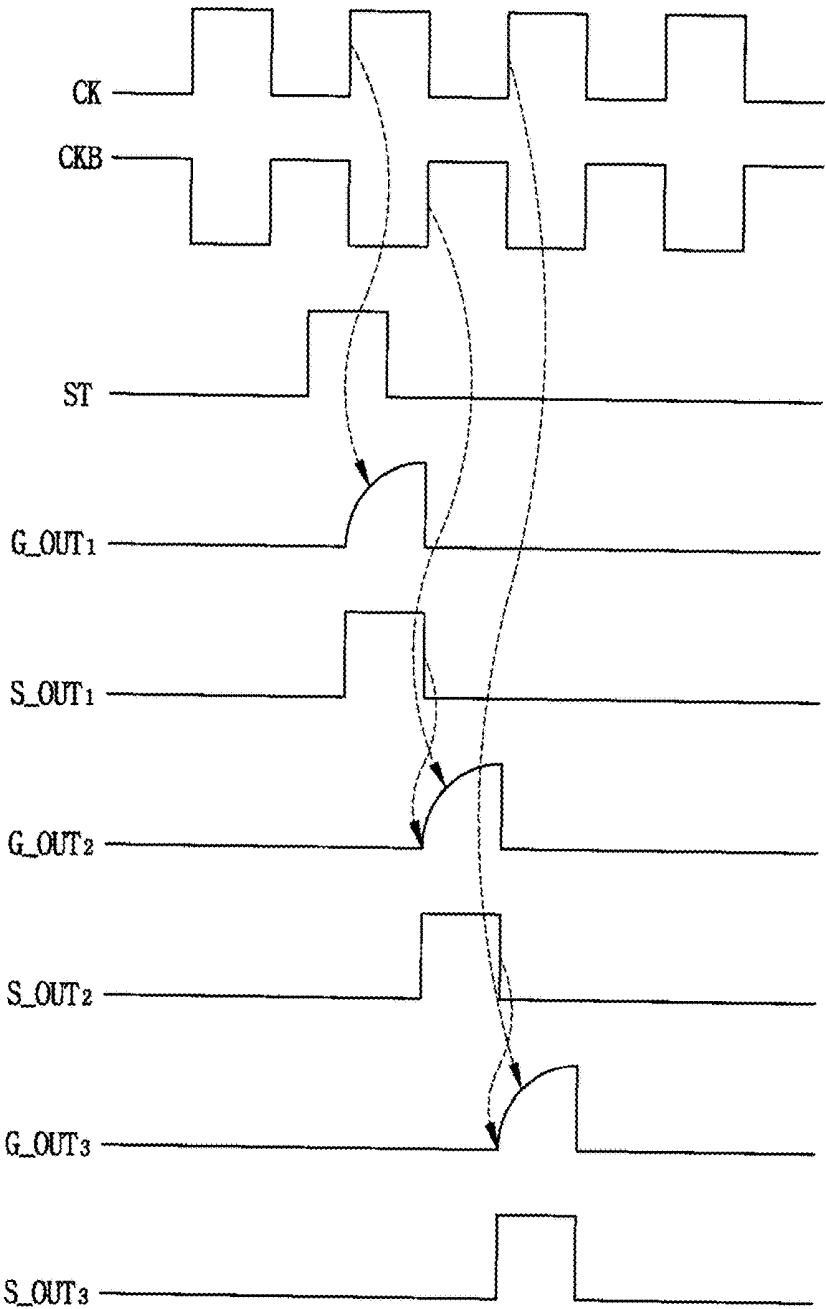
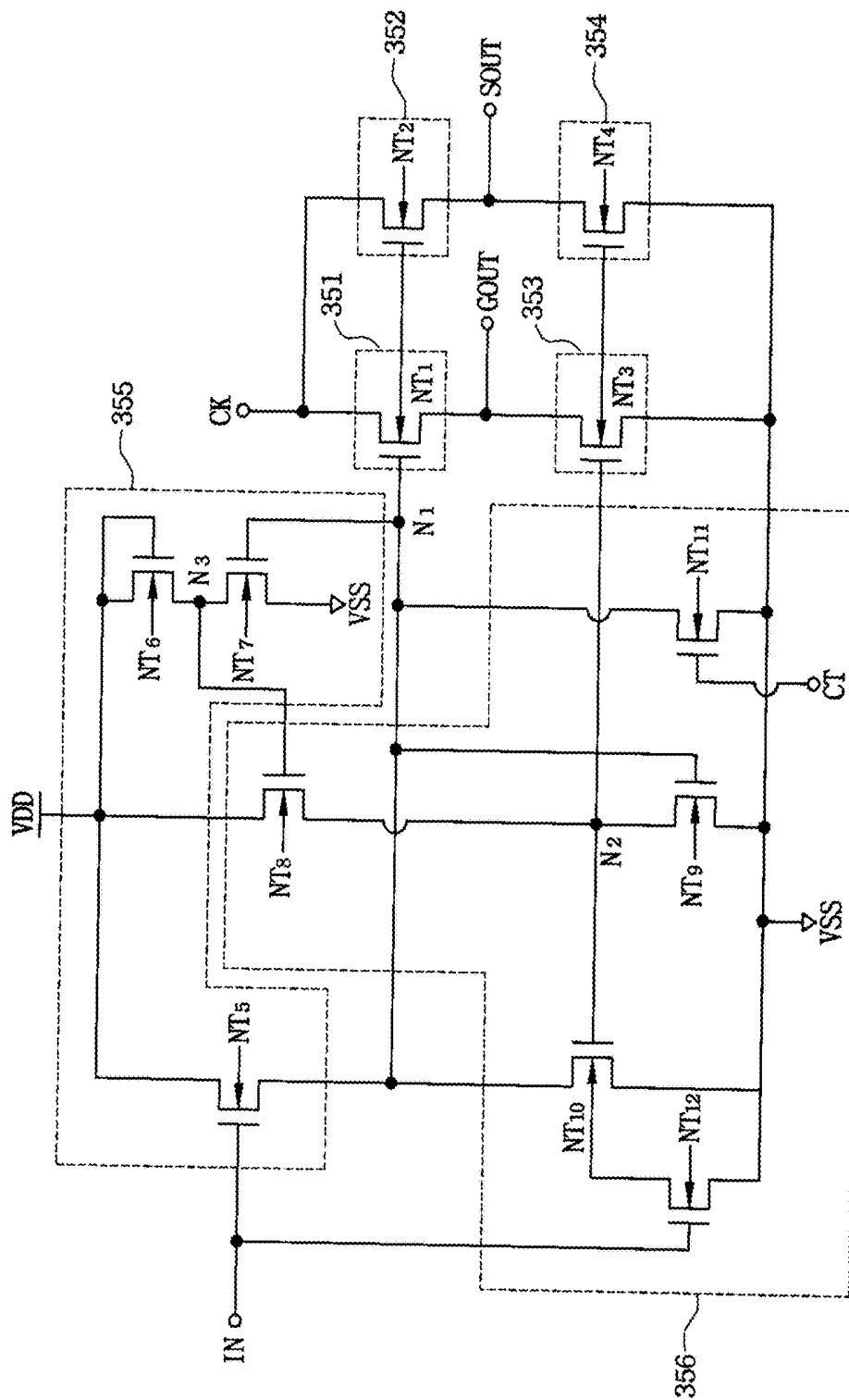


FIG. 4



300 FIG. 5

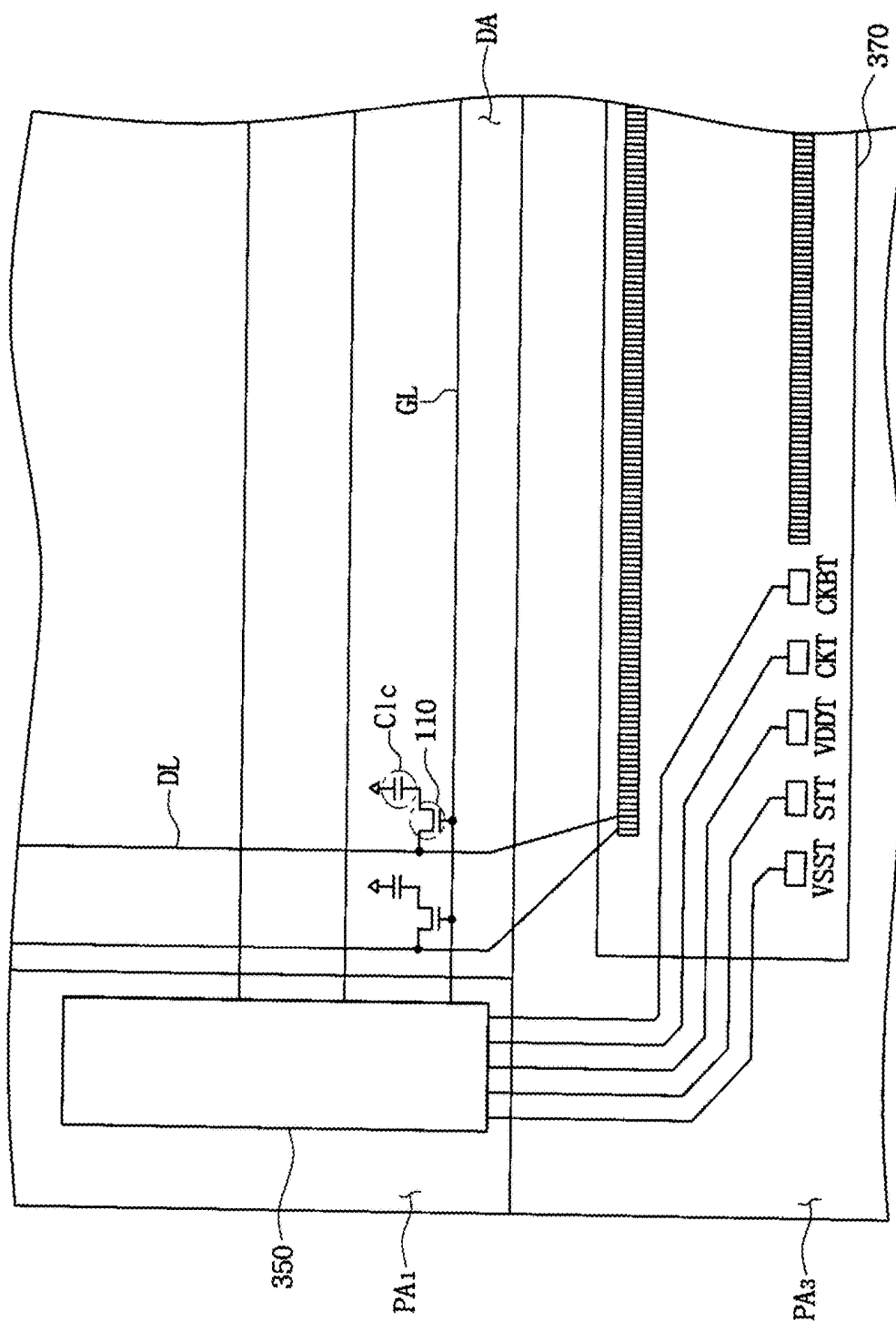


FIG. 6

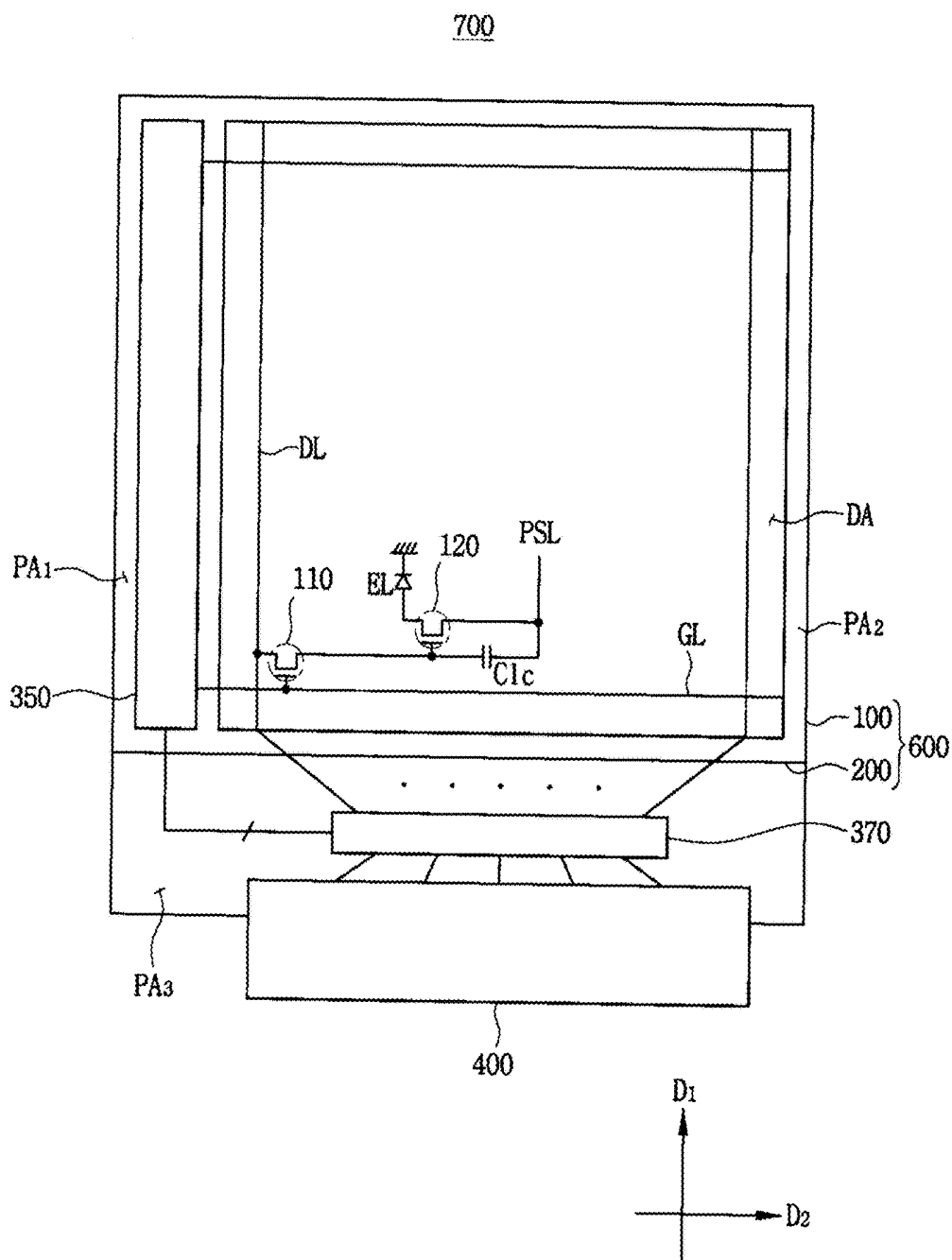


FIG. 7

800

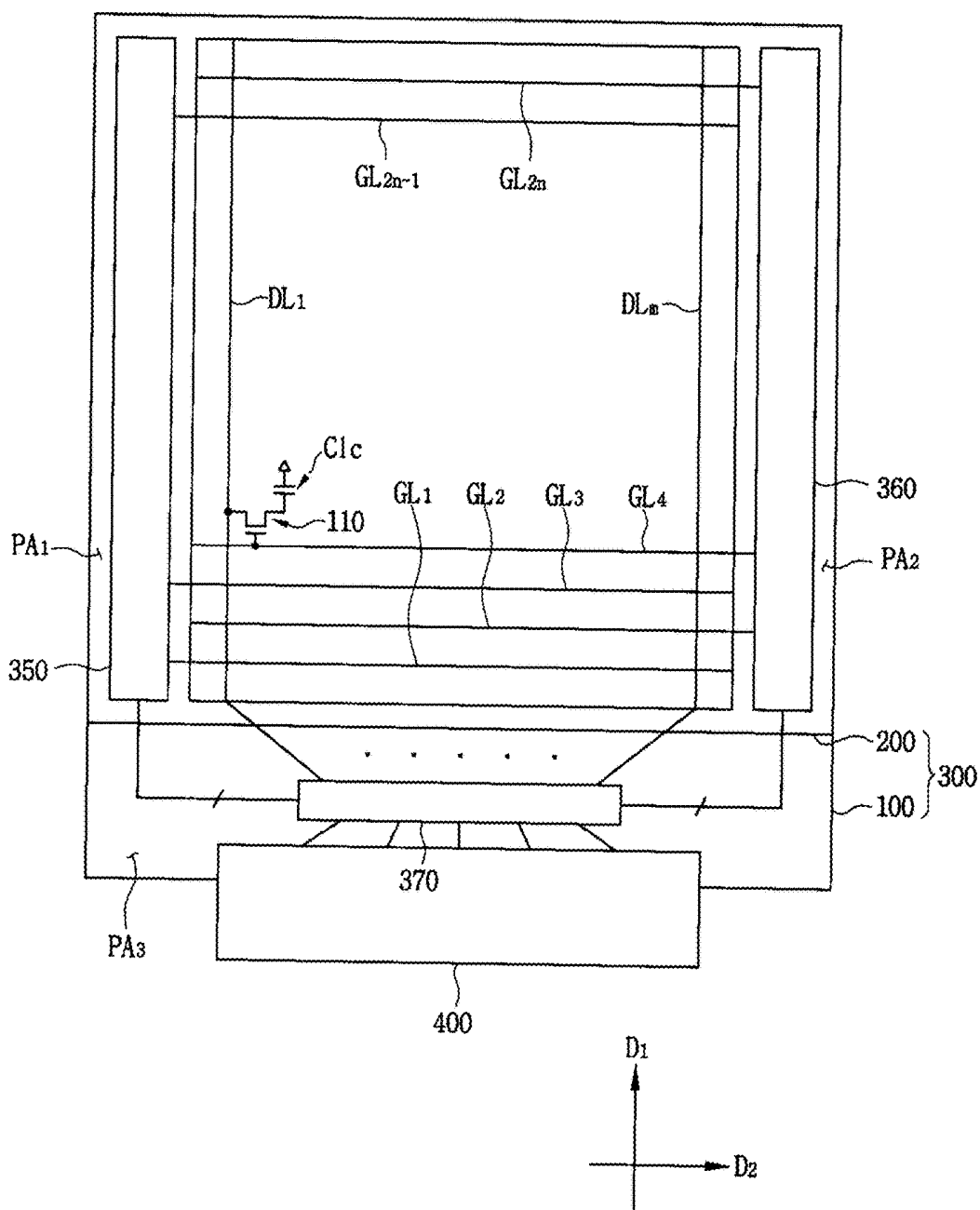


FIG. 8

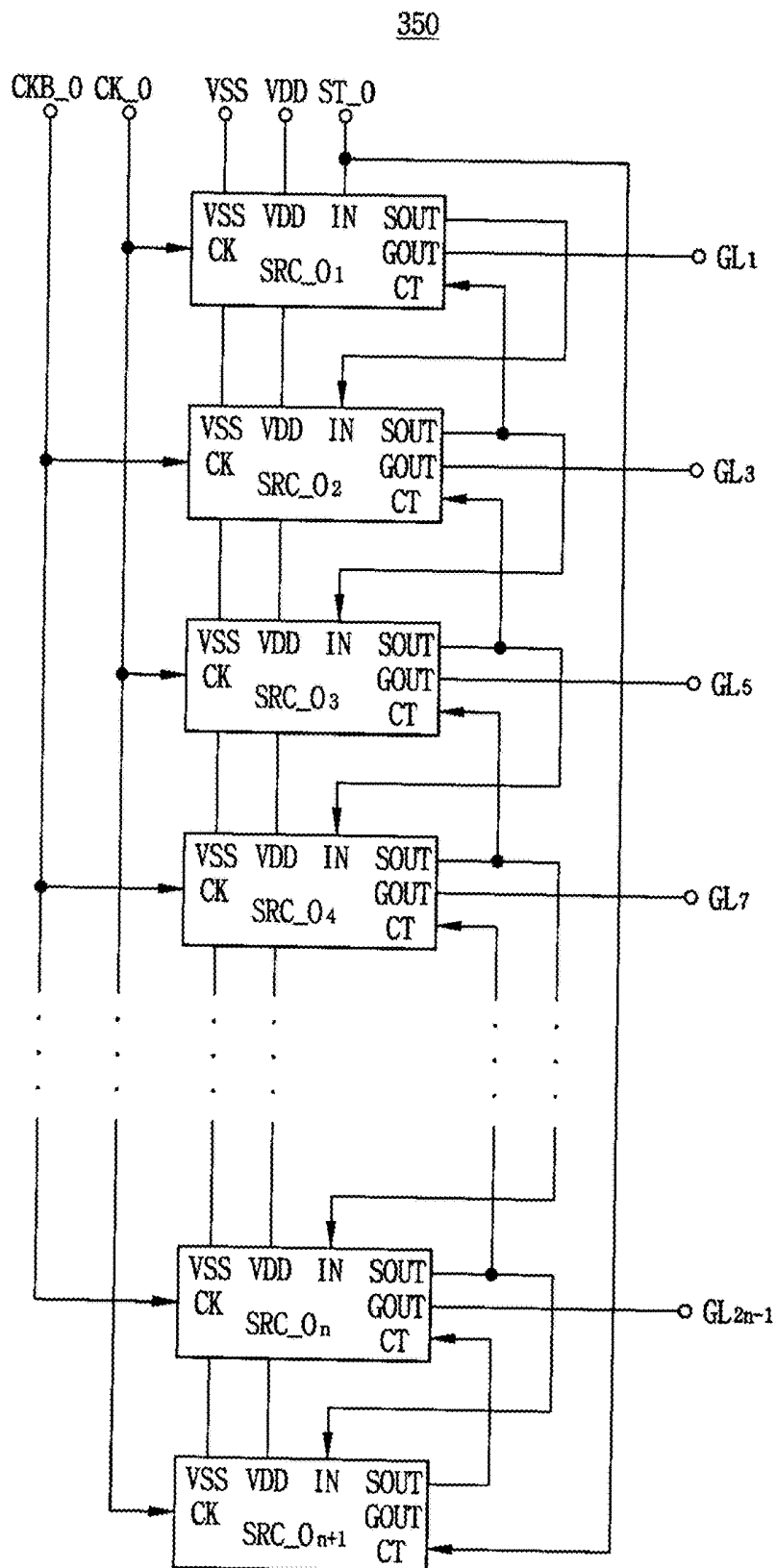


FIG. 9

360

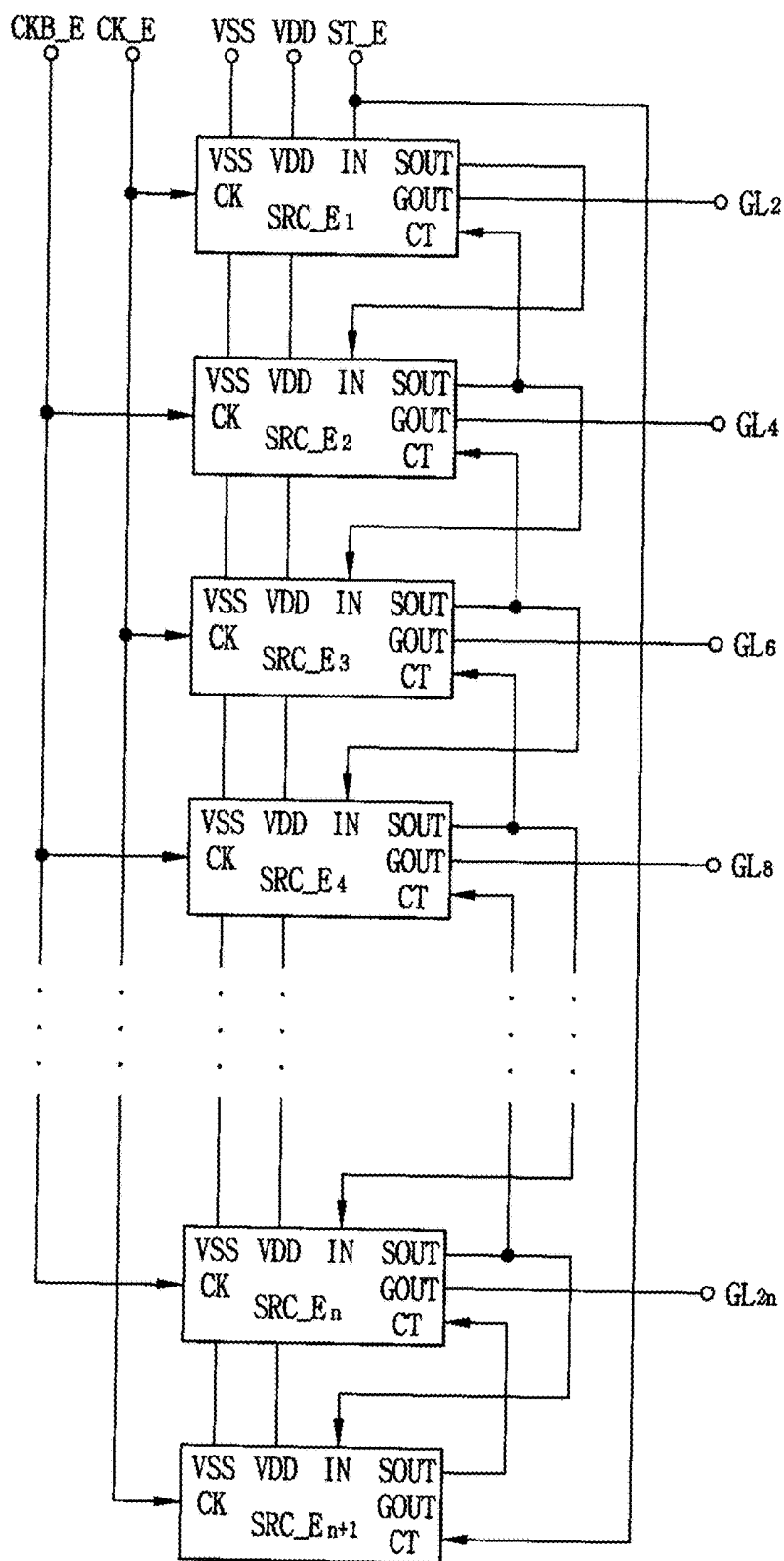


FIG. 10

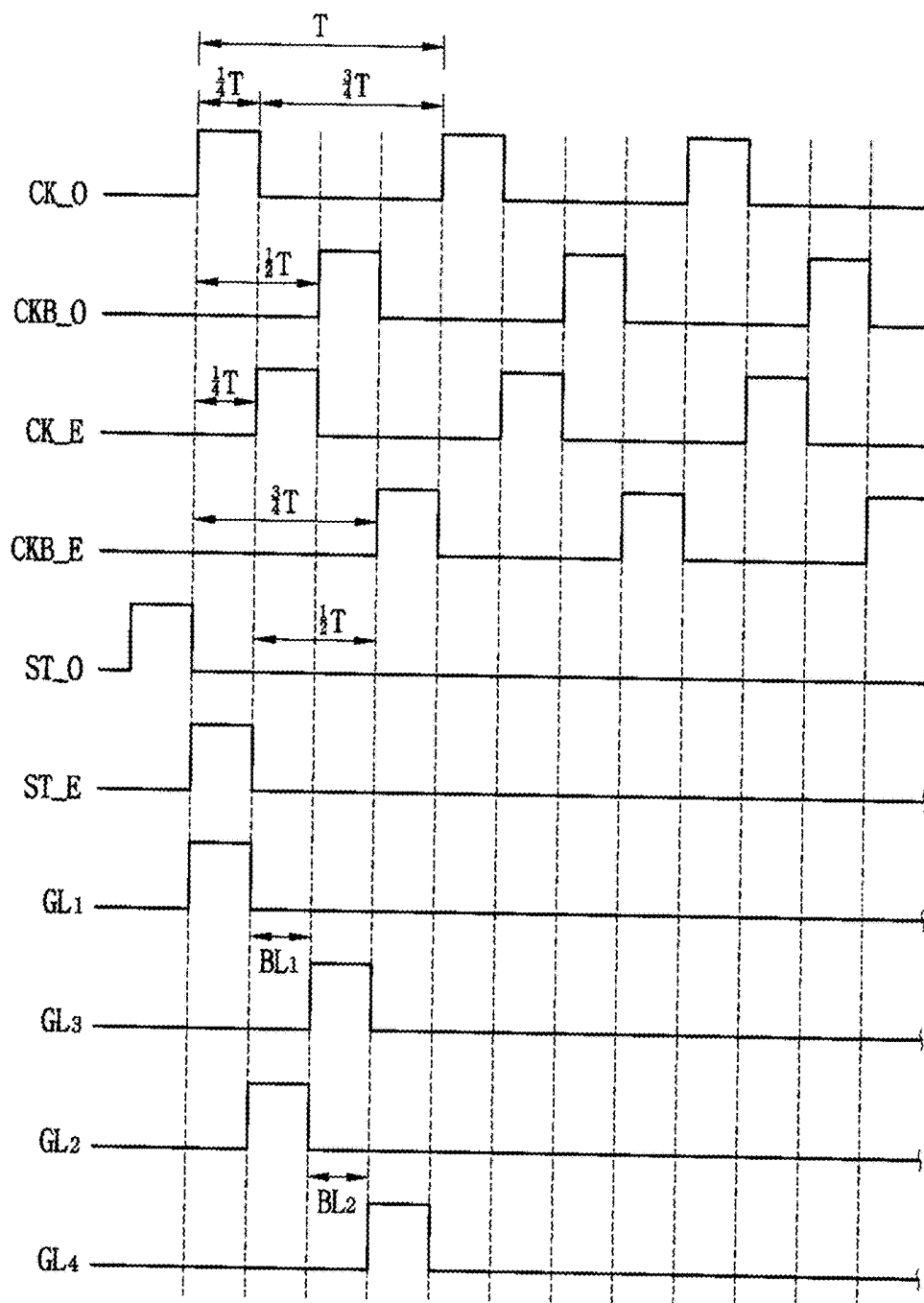


FIG. 11

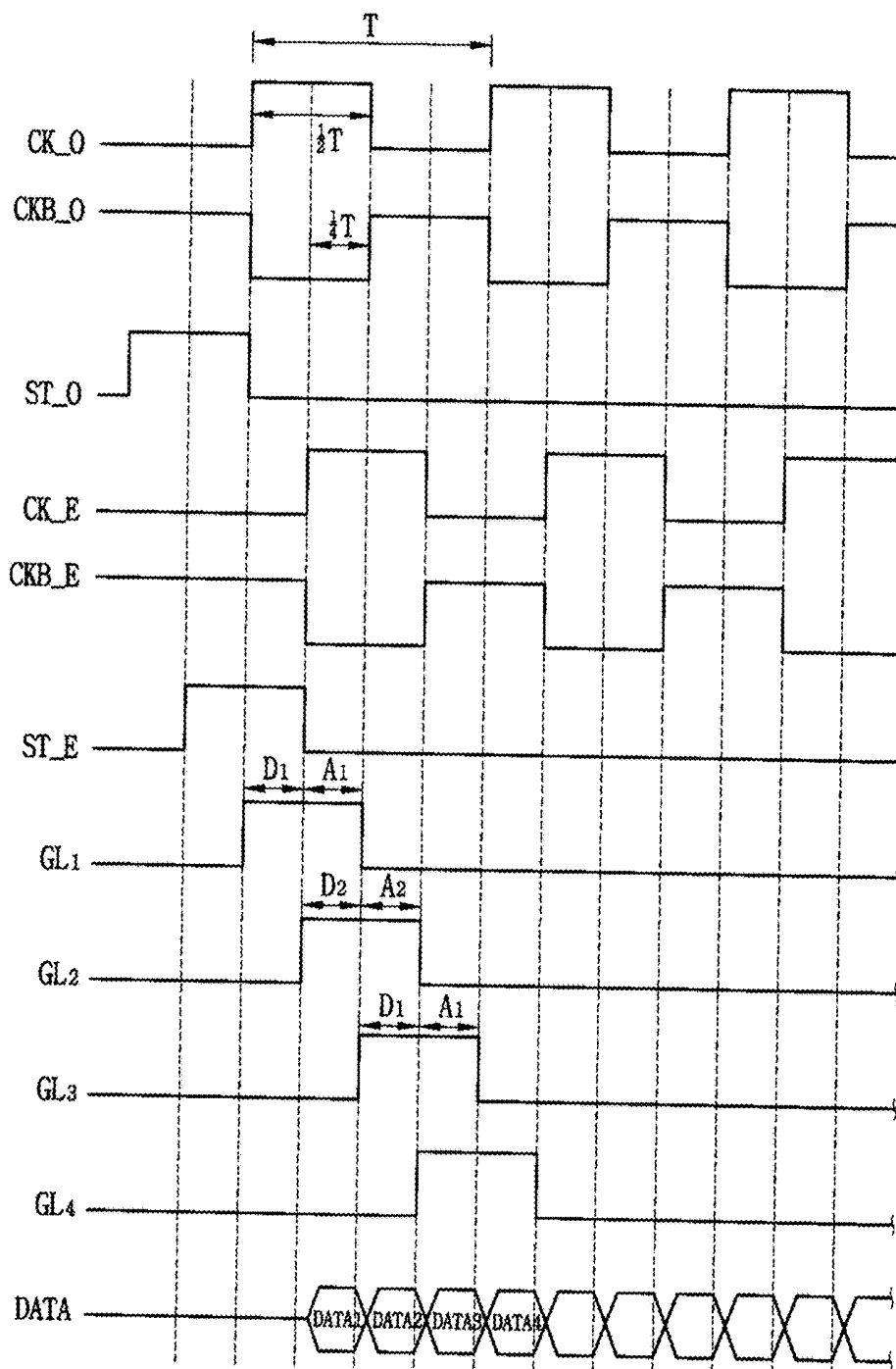
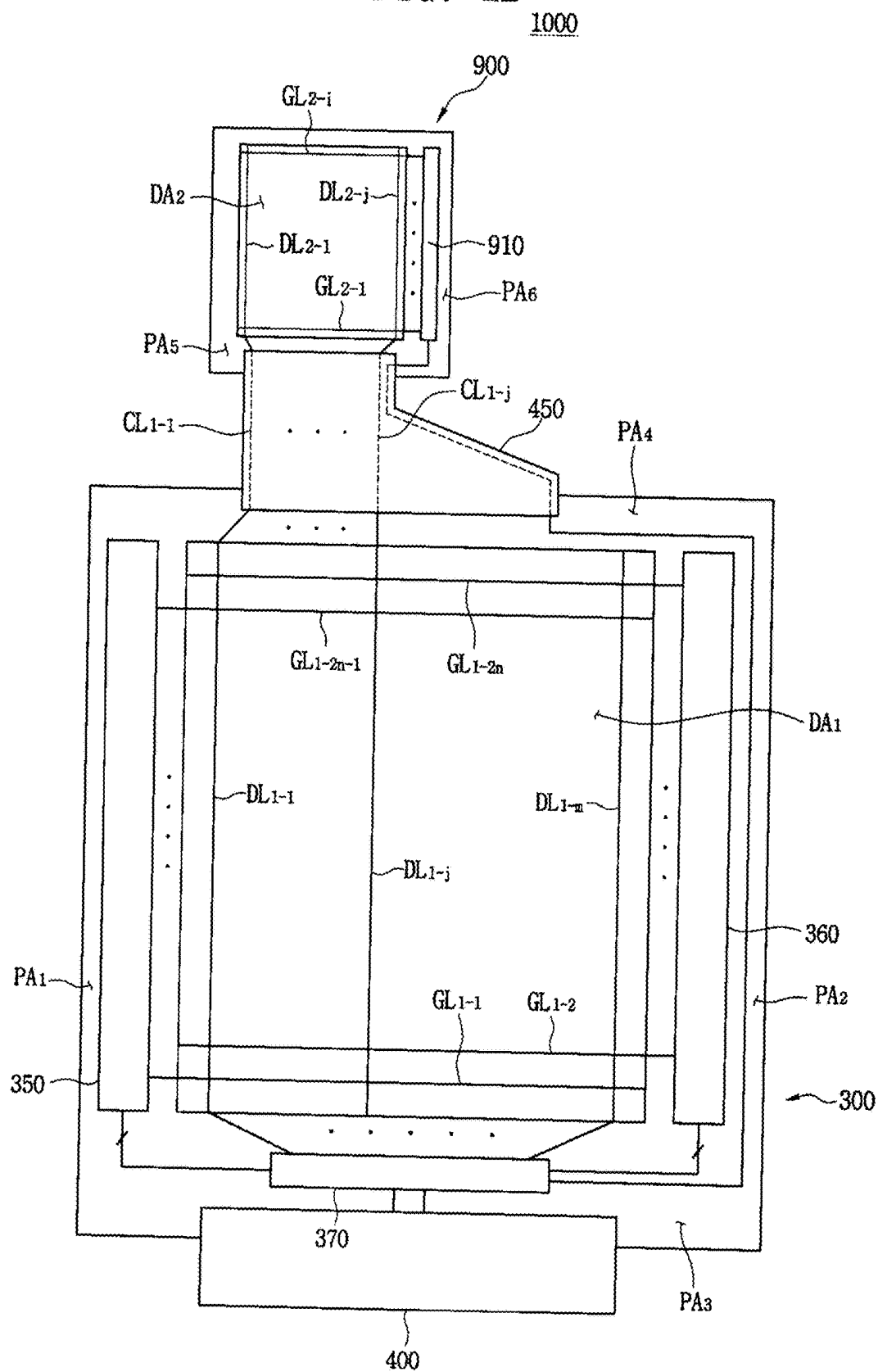


FIG. 12



GATE DRIVING CIRCUIT AND DISPLAY APPARATUS HAVING THE SAME

CROSS REFERENCE TO RELATED APPLICATIONS

[0001] This application is a continuation application of U.S. application Ser. No. 14/994,739, filed on Jan. 13, 2016, which is a continuation application of U.S. application Ser. No. 13/307,440, filed on Nov. 30, 2011, which is a divisional application of U.S. application Ser. No. 12/050,442, filed on Mar. 18, 2008, which is a divisional application of U.S. application Ser. No. 10/832,631, filed on Apr. 27, 2004, which claims priority to and the benefit of Korean Patent Application No. 10-2003-0081525, filed on Nov. 18, 2003, and Korean Patent Application No. 10-2003-0027087, filed on Apr. 29, 2003, all of which are incorporated by reference herein in their entirety.

BACKGROUND OF THE INVENTION

1. Field of the Invention

[0002] The present invention relates to a gate driving circuit and a display apparatus, more particularly to a liquid crystal display apparatus including a gate driving circuit integrated into a liquid crystal display panel.

2. Description of the Related Art

[0003] Liquid crystal display (LCD) apparatuses include an LCD panel having a liquid crystal layer interposed between two substrates. LCD panels include a display area and peripheral areas surrounding the display area. The display area includes a plurality of gate lines, a plurality of data lines arranged in a direction perpendicular to that of the gate lines and a plurality of thin film transistors (TFTs) connected between the gate lines and the data lines. The peripheral areas include a gate driving circuit for sequentially outputting gate driving signals to the gate lines and a data driving circuit for outputting data signals to the data lines.

[0004] In large LCD apparatuses, the gate driving signals applied to gate lines may be delayed due to the longer gate lines and the greater number of TFTs. The gate driving signals may be further delayed because the gate driving signals are provided to adjacent stages included in the gate driving circuit. Thus, the operational properties of the gate driving circuit may be deteriorated. Further, the gate driving circuit is arranged in parallel with the data driving circuit integrated into the peripheral areas of the LCD panel such that the LCD apparatus has a symmetric structure. In this case, the Black Matrix (BM) width of the LCD apparatus is increased. Thus, a need exists for an LCD apparatus capable of improving the operational properties of the gate driving circuit and of reducing the BM width.

BRIEF SUMMARY OF THE INVENTION

[0005] The present invention provides a gate driving circuit having improved operational properties.

[0006] The present invention further provides a liquid crystal display apparatus in which a single chip is integrated into a liquid crystal panel.

[0007] The present invention further provides an organic electro-luminescent display apparatus.

[0008] The present invention provides a liquid crystal display apparatus with dual display screen.

[0009] According to one aspect of the present invention, a gate driving device for applying gate driving signals to gate lines of a liquid crystal display panel, comprises a plurality of stages connected to one another in parallel to apply gate driving signals to gate lines of a liquid crystal display panel, wherein odd-numbered stages of the stages each output the gate driving signals to odd-numbered gate lines of the gate lines in response to a first clock signal, and even-numbered stages of the stages each output the gate driving signals to even-numbered gate lines of the gate lines in response to a second clock signal, the second clock having an opposite phase from a phase of the first clock signal.

[0010] According to another aspect of the present invention, a liquid crystal display apparatus, comprises a liquid crystal display panel including a plurality of pixels, the pixels having a plurality of gate lines, a plurality of data lines and a plurality of switching elements connected between the gate lines and the data lines; a gate driving circuit disposed on the liquid crystal display panel and including a plurality of stages connected to one another in parallel, wherein odd-numbered stages of the stages each apply gate driving signals to odd-numbered gate lines of the gate lines, in response to a first clock signal; and even-numbered stages of the stages each apply the gate driving signals to even-numbered gate lines of the gate lines, in response to a second clock signal having an opposite phase from a phase of the first clock signal; and a data driving chip, disposed on the liquid crystal display panel, to apply data driving signals to the data lines.

[0011] According to another aspect of the present invention, an organic electro-luminescent display apparatus, comprises an organic electro-luminescent display panel including a plurality of pixels, the pixels having a plurality of data lines, a plurality of gate lines and a plurality of organic electro-luminescent devices connected to the gate and data lines; a gate driving circuit disposed on the organic electro-luminescent display panel and including a plurality of stages connected to one another in parallel, wherein odd-numbered stages of the stages each apply gate driving signals to odd-numbered gate lines of the gate lines, in response to a first clock signal; and even-numbered stages of the stages each apply the gate driving signals to even-numbered gate lines of the gate lines, in response to a second clock signal having an opposite phase from a phase of the first clock signal; and a data driving chip, disposed on the organic electro-luminescent display panel, to apply data driving signal to the data lines.

[0012] According to another aspect of the present invention, a liquid crystal display apparatus, comprises: a liquid crystal display panel including a plurality of gate lines and a plurality of data lines; a first gate driving circuit including a plurality of first stages connected to one another in parallel and disposed on the liquid crystal display panel, the first stages outputting first gate driving signals to odd-numbered gate lines of the gate lines with a blank period; a second gate driving circuit including a plurality of second stages connected to one another in parallel and disposed on the liquid crystal display panel, the second stages outputting second gate driving signals to even-numbered gate lines of the gate lines during the blank period; and a data driving chip, disposed on the liquid crystal display panel, to output data driving signals to the data lines.

[0013] According to another aspect of the present invention, a liquid crystal display apparatus comprises: a liquid crystal display panel including a plurality of gate lines and a plurality of data lines; a first gate driving circuit including a plurality of first stages connected to one another in parallel and disposed on the liquid crystal display panel, the first stages outputting first gate driving signals having a first dummy period and a first active period following the first dummy period to odd-numbered gate lines of the gate lines; a second gate driving circuit including a plurality of second stages connected to one another in parallel and disposed on the liquid crystal display panel, the second stages outputting second gate driving signals having a second dummy period and a second active period following the second dummy period to even-numbered gate lines of the gate lines; and a data driving chip, disposed on the liquid crystal display panel, to output data driving signals to the data lines during the first and second active periods.

[0014] According to further aspect of the present invention, a liquid crystal display apparatus comprises: a first liquid crystal display panel including a plurality of first gate lines and a plurality of first data lines; a first gate driving circuit including a plurality of first stages connected to one another in parallel and disposed on the first liquid crystal display panel, the first stages outputting first gate driving signals to odd-numbered gate lines of the first gate lines; a second gate driving circuit including a plurality of second stages connected to one another in parallel and disposed on the first liquid crystal display panel, the second stages outputting second gate driving signals to even-numbered gate lines of the first gate lines; a second liquid crystal display panel including a plurality of second gate lines and a plurality of second data lines; a third gate driving circuit including a plurality of third stages connected to one another in parallel and disposed on the second liquid crystal display panel, the third stages outputting third gate driving signals to the third gate lines; a data driving chip, disposed on the first liquid crystal display panel, to output first and second data signals to the first and second data lines and to output first to third gate control signals to the first to third gate driving circuits, wherein the second data signals are transmitted to the second data lines through the first data lines; and a first flexible printed circuit board, disposed between the first liquid crystal display panel and the second liquid crystal display panel, to electrically connect the first data lines of the first liquid crystal display panel and the second data lines of the second liquid crystal display panel.

[0015] According to still further aspect of the present invention, a liquid crystal display apparatus, comprises: a main liquid crystal display panel including a plurality of main gate lines and a plurality of main data lines; a main gate driving circuit including a plurality of main stages connected to one another in parallel and disposed on the main liquid crystal display panel, the main stages outputting main gate driving signals to the main gate lines; a sub liquid crystal display panel including a plurality of sub gate lines and a plurality of sub data lines; a sub gate driving circuit including a plurality of sub stages connected to one another in parallel and disposed on the sub liquid crystal display panel, the sub stages outputting sub gate driving signals to the sub gate lines; a data driving chip, disposed on the main liquid crystal display panel, to output main and sub data signals to the main and sub data lines and to output main gate control signals to the main gate driving circuits, wherein the sub

data signals are transmitted to the sub data lines through the main data lines; and a flexible printed circuit board, disposed between the main liquid crystal display panel and the sub liquid crystal display panel, to electrically connect the main data lines of the main liquid crystal display panel and the sub data lines of the sub liquid crystal display panel.

[0016] This application claims upon the priorities of Korean Patent Application No. 2003-81525 filed on Nov. 18, 2003 and Korean Patent Application No. 2003-27087 filed on Apr. 29, 2003, the contents of which are herein incorporated by reference in its entirety.

BRIEF DESCRIPTION OF THE DRAWINGS

[0017] The above and other advantages of the present invention will become readily apparent by reference to the following detailed description when considered in conjunction with the accompanying drawings wherein:

[0018] FIG. 1 is a schematic plan view showing an LCD apparatus according to an exemplary embodiment of the present invention;

[0019] FIG. 2 is a circuit diagram of the gate driving circuit shown in FIG. 1;

[0020] FIG. 3 is a timing diagram of the gate driving circuit shown in FIG. 2;

[0021] FIG. 4 is a circuit diagram of each stage of the gate driving circuit shown in FIG. 2;

[0022] FIG. 5 is a schematic plan view showing the data driving chip connected to the gate driving circuit shown in FIG. 1;

[0023] FIG. 6 is a schematic plan view showing an organic electro-luminescent display device according to another exemplary embodiment of the present invention;

[0024] FIG. 7 is a schematic plan view showing an LCD apparatus according to another exemplary embodiment of the present invention;

[0025] FIG. 8 is a circuit diagram showing the first gate driving circuit shown in FIG. 7;

[0026] FIG. 9 is a circuit diagram showing the second gate driving circuit shown in FIG. 7;

[0027] FIG. 10 is a timing diagram of the first and second gate driving circuits shown in FIGS. 8 and 9, according to an exemplary embodiment of the present invention;

[0028] FIG. 11 is a timing diagram of the first and second gate driving circuits shown in FIGS. 8 and 9, according to another exemplary embodiment of the present invention; and

[0029] FIG. 12 is a schematic plan view showing an LCD apparatus with dual display screen according to further exemplary embodiment of the present invention.

DETAILED DESCRIPTION OF THE INVENTION

[0030] FIG. 1 is a schematic plan view showing an LCD apparatus according to an exemplary embodiment of the present invention. An LCD apparatus 500 includes an LCD panel 300, a gate driving circuit 350, a data driving chip 370 and a Flexible Printed Circuit Board (FPC) 400. The LCD panel 300 includes a first substrate 100, a second substrate 200 facing the first substrate 100 and a liquid crystal layer (not shown) interposed between the first and second substrates 100 and 200.

[0031] The LCD panel 300 includes a display area DA to display an image and first to third peripheral areas PA₁-PA₃

adjacent to the display area DA. The display area DA includes pixel matrix having a plurality of gate line GL_n arranged in a first direction D_1 , a plurality of data line DL_m arranged in a second direction D_2 substantially perpendicular to the first direction D_1 and insulated from the gate line GL_n , and a plurality of thin film transistors (TFT) **110** connected between the gate lines GL_n and data lines DL_m . In the exemplary embodiment, “n” and “m” are an integer identical to or greater than one. Each TFT **110** includes a gate electrode connected to each gate line GL , a source electrode (a first current electrode) connected to each data line DL and a drain electrode (or a second current electrode) connected to a liquid crystal capacitor Clc .

[0032] The gate driving circuit **350** is disposed on the first peripheral area PA_1 and outputs gate driving signals to the gate lines GL_n . The data driving chip **370** is mounted onto the third peripheral area PA_3 and outputs a data signal to the data lines DL_m . The FPC **400** is further mounted on the third peripheral area PA_3 , in order to connect an external device (not shown) for driving the LCD panel **300** to the data driving chip **370**. The FPC **400** provides a data signal, a data control signal and a gate control signal with the data driving chip **370**. The data driving chip **370** outputs the data signal to the data lines DL_m as well as provides the gate control signals to the gate driving circuit **350**. In response to the gate control signal, the gate driving circuit **350** outputs the gate driving signals to the gate lines GL_n .

[0033] FIG. 2 is a circuit diagram showing the gate driving circuit shown in FIG. 1. The gate driving circuit **350** includes a shift register having a plurality of stages SRC_1 - SRC_{n+1} connected to one other in parallel. The stages include an N number of driving stages SRC_1 - SRC_n and one dummy stage SRC_{n+1} . Each of the stages SRC_1 to SRC_{n+1} includes a clock signal terminal CK, a first output terminal GOUT, a second output terminal SOUT, an input terminal IN and a control terminal CT. In this case, N is an integer identical to or greater than one.

[0034] First and second clock signals CK and CKB, having an opposite phase to each other, are alternatively applied to the clock signal terminals CK of the stages. For example, the first clock signal CK is applied to the odd-numbered stages $SRC_1, SRC_3, \dots, SRC_{n+1}$ of the stages. The second clock signal CKB is applied to the even-numbered stages $SRC_2, SRC_4, \dots, SRC_n$ of the stages. In response to the first or second clock signal CK or CKB, the first output terminal GOUT outputs the first or second clock signal CK or CKB as a gate driving signal, which is applied to a corresponding one of the gate lines GL_n , and the second output terminal SOUT outputs the first or second clock signal CK or CKB as a stage driving signal.

[0035] The input terminal IN receives the stage driving signal output from the second output terminal SOUT of a previous stage, and the control terminal CT receives the stage driving signal output from the second output terminal SOUT of a next stage. The input terminal IN of the first driving stage SRC_1 receives a start signal ST because there is no previous stage with respect to the first driving stage SRC_1 . Also, the control terminal CT of the dummy stage SRC_{n+1} receives the start signal ST because there is no next stage with respect to the dummy stage SRC_{n+1} . Each of the stages SRC_1 to SRC_n further includes a ground voltage terminal VSS and a driving voltage terminal VDD that receive a ground voltage and a driving voltage, respectively.

[0036] FIG. 3 is a timing diagram of the gate driving circuit of FIG. 2. The first and second clock signals CK and CKB have the opposite phase to each other, for example, a high state or a low state. The first driving stage SRC_1 is activated in response to the high state of the start signal ST, and outputs a first gate driving signal G_OUT_1 of a high state through the first output terminal GOUT. Since a first gate line GL_1 connected to the first output terminal GOUT, and the TFT **110** and liquid crystal capacitor Clc connected to the first gate line GL_1 operate as a load, the first gate driving signal G_OUT_1 is delayed.

[0037] The first driving stage SRC_1 outputs a first stage driving signal S_OUT_1 of a high state through the second output terminal SOUT. The first stage driving signal S_OUT_1 is outputted without delay because the load of the second output terminal SOUT of the first driving stage SRC_1 is relatively small. The first stage driving signal S_OUT_1 is provided to the input terminal IN of a second driving stage SRC_2 , so that the second driving stage SRC_2 is operated regardless of the delay of the first gate driving signal G_OUT_1 .

[0038] The second driving stage SRC_2 outputs a second gate driving signal G_OUT_2 of a high state and a second stage driving signal S_OUT_2 of a high stage through a first output terminal GOUT and a second output terminal SOUT thereof, respectively. The second stage driving signal S_OUT_2 is provided to the control terminal CT of the first driving stage SRC_1 and to the input terminal IN of a third driving stage SRC_3 . Therefore, the first gate driving signal G_OUT_1 and the first stage driving signal S_OUT_1 respectively output from the first and second output terminals GOUT and SOUT of the first driving stage SRC_1 are transitioned into a low state in response to the second stage driving signal S_OUT_2 .

[0039] The third driving stage SRC_3 outputs a third gate driving signal G_OUT_3 and a third stage driving signal S_OUT_3 having a high stage through first and second output terminals GOUT and SOUT, respectively, while the second gate driving signal G_OUT_2 and second stage driving signal S_OUT_2 output from the first and second output terminals GOUT and SOUT of the second driving stage SRC_2 transition from a high stage to a low state. By repeatedly performing the foregoing operations, the gate driving signal in a high state is sequentially output from the driving stages SRC_1 to SRC_n .

[0040] FIG. 4 is a circuit diagram showing each stage of FIG. 2. Each stage of the stages of the gate driving circuit **350** includes a first pull-up part **351**, a second pull-up part **352**, a first pull-down part **353**, a second pull-down part **354**, a pull-up driving part **355** and a pull-down driving part **356**.

[0041] The first pull-up part **351** transmits the first clock signal CK or the second clock signal CKB from the clock signal terminal CK to the first output terminal GOUT. The second pull-up part **352** transmits the first clock signal CK or the second clock signal CKB from the clock signal terminal CK to the second output terminal SOUT.

[0042] The first pull-up part **351** includes a first NMOS transistor NT1 having a gate electrode connected to a first node N1, a source electrode connected to the clock signal terminal CK and a drain electrode connected to the first output terminal GOUT. The second pull-up part **352** includes a second NMOS transistor NT2 having a gate electrode connected to the gate electrode of the first NMOS transistor NT1, a source electrode connected to the clock

signal terminal CK and a drain electrode connected to the second output terminal SOUT. The first and second NMOS transistors NT1 and NT2 each have a channel length of about 3.5 micrometers. The first NMOS transistor NT1 has a channel width of about 1110 micrometers and the second NMOS transistor NT2 has a channel width of about 100 micrometers. The channel width ratio of the first NMOS transistor NT1 to the second NMOS transistor NT2 is approximately 10:1.

[0043] The first pull-down part 353 is activated in response to the inactivation of the first pull-up part 351, and discharges the first clock signal CK or second clock signal CKB output from the first output terminal GOUT. The second pull-down part 354 is activated in response to the inactivation of the second pull-up part 352, and discharges the first clock signal CK or second clock signal CKB output from the second output terminal SOUT.

[0044] The first pull-down part 353 includes a third NMOS transistor NT3 having a gate electrode connected to a second node N2, a drain electrode connected to the first output terminal GOUT and a source electrode connected to the ground voltage terminal VSS. The second pull-down part 354 includes a fourth NMOS transistor NT4 having a gate electrode connected to the gate electrode of the third NMOS transistor NT3, a drain electrode connected to the second output terminal SOUT and a source electrode connected to the ground voltage terminal VSS. The third and fourth NMOS transistors NT3 and NT4 each have a channel length of about 3.5 micrometers. The third NMOS transistor NT3 has a channel width of about 2035 micrometers and the fourth NMOS transistor NT4 has a channel width of about 100 micrometers, so that a channel width ratio of the third NMOS transistor T3 to the fourth NMOS transistor T4 is approximately 20:1.

[0045] The pull-up driving part 355 includes fifth, sixth and seventh NMOS transistors NT5, NT6 and NT7 and activates the first and second pull-up parts 351 and 352. The fifth NMOS transistor NT5 includes a gate electrode connected to the input terminal IN, a drain electrode connected to the driving voltage terminal VDD and a source electrode connected to the first node N1. The sixth NMOS transistor NT6 includes gate and drain electrodes commonly connected to the driving voltage terminal VDD, and a source electrode connected to the third node N3. The seventh NMOS transistor NT7 includes a gate electrode connected to the first node N1, a drain electrode connected to the third node N3 and a source electrode connected to the ground voltage terminal VSS. The fifth, sixth and seventh NMOS transistors NT5, NT6 and NT7 each have a channel length of about 3.5 micrometers. The fifth NMOS transistor NT5 has a channel width of about 300 micrometers, and the sixth and seventh NMOS transistors NT6 and NT7 each have a channel width of about 50 micrometers.

[0046] The pull-down driving part 356 includes eighth, ninth, tenth and eleventh NMOS transistors NT8, NT9, NT10 and NT11 and inactivates the first and second pull-up parts 351 and 352. Further, the pull-down driving part 356 activates the first and second pull-down part 353 and 354.

[0047] The eighth NMOS transistor NT8 includes a gate electrode connected to a third node N3, a drain electrode connected to the driving voltage terminal VDD and a source electrode connected to the second node N2. The ninth NMOS transistor NT9 includes a gate electrode connected to the first node N1, a drain electrode connected to the second

node N2 and a source electrode connected to the ground voltage terminal VSS. The tenth NMOS transistor NT10 includes a gate electrode connected to the second node N2, a drain electrode connected to the first node N1 and a source electrode connected to the ground voltage terminal VSS. The eleventh NMOS transistor NT11 includes a gate electrode connected to the control terminal CT, a drain electrode connected to the first node N1 and a source electrode connected to the ground voltage terminal VSS.

[0048] The pull-down driving part 356 further includes a twelfth NMOS transistor NT12 includes a gate electrode connected to the input terminal IN, a drain electrode connected to the second node N2 and a source electrode connected to the ground voltage terminal VSS. The eighth, ninth, tenth, eleventh and twelfth NMOS transistors NT8, NT9, NT10, NT11 and NT12 have a channel length of about 3.5 micrometers. The eighth and twelfth NMOS transistors NT8 and NT12 have a channel width of about 100 micrometers. The ninth, ten and eleventh NMOS transistors NT9, NT10 and NT11 have a channel width of about 150 micrometers, about 100 micrometers and about 150 micrometers, respectively.

[0049] When the input terminal IN receives a stage driving signal from the second output terminal SOUT of a previous stage, the fifth NMOS transistor NT5 is activated to raise an electric potential at the first node N1. In response to the electric potential of a high level at the first node N1, the first and second NMOS transistors NT1 and NT2 are activated to output the gate driving signal and the stage driving signal via the first output terminal GOUT and the second output terminal SOUT, respectively. Further, the seventh NMOS transistor NT7 is activated in response to the electric potential of a high level at the first node N1. Since the seventh NMOS transistor NT7 is activated and the sixth NMOS transistor NT6 maintains an activation state, an electric potential falls down at the third node N3.

[0050] In response to the electric potential of a low level at the third node N3, the eighth NMOS transistor NT8 is inactivated, and thus, the second node N2 does not receive the driving voltage VDD. The ninth NMOS transistor NT9 is activated in response to the electric potential of a high level at the first node N1 so that the electric potential at the second node N2 is maintained in the ground voltage VSS. In response to the electric potential of the second node N2 of a low level, the third and fourth NMOS transistors NT3 and NT4 are inactivated.

[0051] When the control terminal CT receives the stage driving signal from the second output terminal SOUT of a next stage, the eleventh NMOS transistor NT11 is activated to discharge the electric potential at the first node N1 to the ground voltage VSS. In response to the electric potential of a low level at the first node N1, the seventh and ninth NMOS transistors NT7 and NT9 are inactivated. Thus, the electric potential at the second node N2 is gradually raised in response to the activation of the eighth NMOS transistor NT8, and the third and fourth NMOS transistors NT3 and NT4 are activated to discharge the gate driving signal output from the first and second output terminals GOUT and SOUT to the ground voltage VSS. In response to the electric potential of a high level at the second node N2, the twelfth and tenth NMOS transistors NT12 and NT10 are activated so that the electric potential at the first node N1 is discharged

rapidly. Thus, each stage may output the gate and stage driving signals, which maintain a high state during a pre-determined period.

[0052] FIG. 5 is a diagram showing the data driving chip 370 connected to the gate driving circuit 350. The data driving chip 370 includes a start signal input terminal STT to receive a start signal ST, a first clock signal input terminal CKT to receive a first clock signal CK, a second clock signal input terminal CKBT to receive a second clock signal CKB, a ground voltage input terminal VSST to receive a ground voltage VSS and a driving voltage input terminal VDDT to receive a driving voltage VDD.

[0053] The start signal input terminal STT is electrically connected to the first driving stage SRC₁ and dummy stage SRC_{n+1} of the gate driving circuit 350. The first clock signal input terminal CKT is electrically connected to the clock signal terminal CK of the odd numbered stages SRC₁, SRC₃, . . . , SRC_{n+1}, and the second clock signal input terminal CKBT is electrically connected to the clock signal terminal CK of the even numbered stages SRC₂, SRC₄, . . . SRC_n. The ground voltage input terminal VSST is electrically connected to the ground voltage terminal VSS of the stages SRC₁, . . . , SRC_{n+1}. The driving voltage input terminal VDDT is electrically connected to the driving voltage terminal VDD of the stages SRC₁, . . . , SRC_{n+1}. Thus, the data driving chip 370 provides the start signal ST, the first and second clock signals CK and CKB, the ground voltage VSS and the driving voltage VDD with the gate driving circuit 350.

[0054] FIG. 6 is a schematic plan view showing an organic electro-luminescent display apparatus, according to another exemplary embodiment of the present invention. An organic electro-luminescent (EL) display apparatus 700 includes an organic electro-luminescent display panel 600 having a first substrate 100, a second substrate 200 facing the first substrate 100 and an organic electro-luminescent device (EL) interposed between the first and second substrates 100 and 200.

[0055] The organic electro-luminescent display panel 600 includes a display area DA for displaying an image and first and third peripheral areas PA₁ to PA₃ adjacent to the display area DA. The display area DA includes a plurality of pixels formed in a matrix configuration, an N number of gate lines GLs arranged in a first direction D₁ and an M number of data lines DL arranged in a second direction D₂ substantially perpendicular to the first direction D₁ and insulated from the gate lines GLs. In this exemplary embodiment, "N" and "M" are an integer identical to greater than one.

[0056] Each of the pixels is defined by the gate line GL, the data line DL and a power supply line PSL, and includes a switching transistor 110, a driving transistor 120, an organic electro-luminescent device (EL). The switching transistor 110 includes a source electrode connected to the data line DL, a gate electrode connected to the gate line GL and a drain electrode connected to both a liquid crystal capacitor Clc and the gate electrode of the driving transistor 120. The driving transistor 120 includes a source electrode electrically connected to the power supply line PSL, a drain electrode connected to the organic electro-luminescent device (EL) and a gate electrode connected to the drain electrode of the switching transistor 110. The liquid crystal capacitor Clc is electrically connected between the drain electrode of the switching transistor 110 and the source electrode of the driving transistor 120. The organic electro-

luminescent device (EL) includes a grounded cathode electrode and an anode electrode connected to the drain electrode of the driving transistor 120 so as to receive the driving current provided from the power supply line PSL. The power supply line PSL receives a direct current signal from an external power supply device (not shown).

[0057] A gate driving circuit 350 is disposed onto the first peripheral area PA₁ to sequentially output gate driving signals to the gate lines GL. A data driving chip 370 is mounted onto the third peripheral area PA₃ to output a data signal to the data lines DL. An external device (not shown) for driving the LCD panel 300 and a Flexible Printed Circuit board (FPC) 400 for electrically connecting the external device to the LCD panel 300 may be further mounted onto the third peripheral area PA₃. The FPC 400 is electrically connected to the data driving chip 370 to output a data signal, a data control signal and a gate control signal. Thus, the gate control signal is applied to the gate driving circuit 350 through the data driving chip 370.

[0058] The gate driving circuit 350, as described above, includes a plurality of stages. Each stage includes a clock signal terminal to receive a clock signal, a first output terminal to output the clock signal as a gate driving signal, a second output terminal to output the clock signal as a stage driving signal, an input terminal and a control terminal to receive the stage driving signal. Thus, in the gate driving circuit 350, the stage driving signal is provided to the input and control terminals of the adjacent stages without distorting. Thus, the operational properties of the gate driving circuit 350 and the display properties of the display apparatus 700 are improved.

[0059] FIG. 7 is a schematic plan view showing an LCD apparatus according to another exemplary embodiment of the present invention. The same reference numerals are used to refer the same or like parts those described in FIG. 1 and any further explanation is omitted.

[0060] An LCD apparatus 800 includes an LCD panel 300, first and second gate driving circuits 350 and 360, a data driving chip 370 and a Flexible Printed Circuit board (FPC) 400. The LCD panel 300 includes a first substrate 100, a second substrate 200 facing the first substrate 100 and a liquid crystal layer (not shown) interposed between the first and second substrates 100 and 200.

[0061] The first gate driving circuit 350 is disposed on the first peripheral area PA₁ and outputs gate driving signals to the odd numbered gate lines of the gate lines GL_{2n+1}. The second gate driving circuit 360 is disposed on the second peripheral area PA₂, which is opposite the first peripheral area PA₁, and outputs the gate driving signals to the even numbered gate lines of the gate lines GL_{2n}. The data driving chip 370 is mounted onto the third peripheral area PA₃ and outputs a data signal to the data lines DL_m. On the third peripheral area PA₃, the FPC 400 is further mounted. The FPC 400 electrically connects an external device (not shown) for driving the LCD panel 300 and the data driving chip 370. The data driving chip 370 outputs a data signal and first and second gate control signals to the data lines DL_m and the first and second gate driving circuits 350 and 360 through the FPC 400. Therefore, the first and second gate driving circuits 350 and 360 apply the gate driving signals to the odd numbered and even numbered gate lines of the gate lines, respectively.

[0062] FIG. 8 is a circuit diagram showing the first gate driving circuit shown in FIG. 7. The first gate driving circuit

350 includes a first shift register having a plurality of odd stages SRC_O_1 - SRC_O_{n+1} connected to one another in parallel. Each odd stage includes the same structure to that of the stage shown in FIG. 4. The odd stages include an N number of driving stages SRC_O_1 - SRC_O_n and one dummy stage SRC_O_{n+1} . Each of the odd stages SRC_O_1 to SRC_O_{n+1} includes a clock signal terminal CK, a first output terminal GOUT, a second output terminal SOUT, an input terminal IN and a control terminal CT. First and second clock signals CK_O and CKB_O are alternatively applied to the clock signal terminals CK of the odd stages. For example, the first clock signal CK_O is applied to the odd-numbered stages SRC_O_1 , SRC_O_3 , ..., SRC_O_{n+1} of the odd stages, and the second clock signal CKB_O is applied to the even-numbered stages SRC_O_2 , SRC_O_4 , ..., SRC_O_n of the odd stages.

[0063] The first clock signal CK_O is outputted as a first gate driving signal through the first output terminal GOUT of the odd-numbered stages SRC_O_1 , SRC_O_3 , ..., SRC_O_{n+1} of the driving stages, and the second clock signal CKB_O is outputted as the first gate driving signal through the first output terminal GOUT of the even-numbered stages SRC_O_2 , SRC_O_4 , ..., SRC_O_n of the driving stages. The first output terminal GOUT of the dummy stage SRC_O_{n+1} is maintained in a floating state because there is no gate line corresponding to the first output terminal GOUT of the dummy stage SRC_O_{n+1} . The first output terminal GOUT of the odd stages SRC_O_1 to SRC_O_n is electrically connected to a corresponding one of the odd-numbered gate lines GL_1 , GL_3 , ..., GL_{2n-1} formed at a display area DA. Therefore, the first gate driving signals output from the first output terminals GOUT of the odd stages SRC_O_1 to SRC_O_n are sequentially applied to the odd-numbered gate lines GL_1 , GL_3 , ..., GL_{2n-1} .

[0064] The first clock signal CK_O is outputted as a first stage driving signal through the second output terminal SOUT of the odd-numbered stages SRC_O_1 , SRC_O_3 , ..., SRC_O_{n+1} of the odd stages, and the second clock signal CKB_O is outputted as the first stage driving signal through the second output terminal SOUT of the even stages SRC_O_2 , SRC_O_4 , ..., SRC_O_n . The input terminal IN receives the first stage driving signal output from the second output terminal SOUT of a previous odd stage, and the control terminal CT receives the first stage driving signal output from the second output terminal SOUT of a next odd stage. The input terminal IN of the first driving stage SRC_O_1 receives a first start signal ST because there is no previous odd stage with respect to the first driving stage SRC_O_1 . Also, the control terminal CT of the dummy stage SRC_O_{n+1} receives the first start signal ST because there is no next odd stage with respect to the dummy stage SRC_O_{n+1} . Each of the odd stages SRC_O_1 to SRC_O_{n+1} further includes a ground voltage terminal VSS and a driving voltage terminal VDD that receive a ground voltage and a driving voltage, respectively.

[0065] Referring to FIG. 9, a second gate driving circuit **360** includes a second shift register having a plurality of even stages SRC_E_1 to SRC_E_{n+1} connected to one another in parallel. The even stages SRC_E_1 to SRC_E_{n+1} include a plurality of driving stages SRC_E_1 to SRC_E_n and one dummy stage SRC_E_{n+1} . Each even stage includes the same structure to that of the stage shown in FIG. 4. Each of the even stages SRC_E_1 to SRC_E_{n+1} includes a clock signal

terminal CK, a first output terminal GOUT, a second output terminal SOUT, an input terminal IN and a control terminal CT.

[0066] The clock signal terminal CK receives a third clock signal CK_E or a fourth clock signal CKB_E. For example, the clock signal terminal CK at the odd-numbered stages SRC_E_1 , SRC_E_3 , ..., SRC_E_{n+1} of the even stages receives the third clock signal CK_E, and the clock signal terminal CK at the even-numbered stages SRC_E_2 , SRC_E_4 , ..., SRC_E_n of the even stages receives the fourth clock signal CKB_E.

[0067] The third clock signal CK_E is outputted as a second gate driving signal through the first output terminal GOUT of the even-numbered stages SRC_E_1 , SRC_E_3 , ..., SRC_E_{n+1} of the driving stages, and the second clock signal CKB_E is outputted as the second gate driving signal through the first output terminal GOUT of the even-numbered stages SRC_E_2 , SRC_E_4 , ..., SRC_E_n of the driving stages. The first output terminal GOUT of the even stages SRC_E_1 to SRC_E_n is electrically connected to a corresponding one of the even-numbered gate lines GL_2 , GL_4 , ..., GL_{2n} formed at a display area DA. Therefore, the second gate driving signals output from the first output terminals GOUT of the even stages SRC_E_1 to SRC_E_n are sequentially applied to the even-numbered gate lines GL_2 , GL_4 , ..., GL_{2n} .

[0068] The third clock signal CK_E is outputted as a second stage driving signal through the second output terminal SOUT of the even-numbered stages SRC_E_1 , SRC_E_3 , ..., SRC_E_{n+1} of the even stages, and the fourth clock signal CKB_E is outputted as the second stage driving signal through the second output terminal SOUT of the even-numbered stages SRC_E_2 , SRC_E_4 , ..., SRC_E_n of the even stages. The second stage driving signal output from the second output terminal SOUT of a previous even stage is inputted to the input terminal IN, and the second stage driving signal output from the second output terminal SOUT of a next even stage is inputted to the control terminal CT. The input terminal IN of the first even stage SRC_E_1 receives a second start signal ST_E because there is no previous even stage with respect to the first even stage SRC_E_1 . Also, the control terminal CT of the dummy stage SRC_E_{n+1} receives the second start signal ST_E since there is no next even stage with respect to the dummy stage SRC_E_{n+1} .

[0069] FIG. 10 is a timing diagram of the first and second gate driving circuits shown in FIGS. 8 and 9. The first, second, third and fourth clock signals CK_O, CKB_O, CK_E and CKB_E each have a high state or a low state during a predetermined period T such that only one clock signal of a high state exists during a quarter period $1/4T$. Therefore, each of the first, second, third and fourth clock signals CK_O, CKB_O, CK_E and CKB_E has a high state during a first quarter period $1/4T$ and a low state during the last periods, that is, three quarter period $3/4T$. In order to that only one clock signal has a high state during one quarter period $1/4T$, the second to third clock signals CKB_O, CK_E and CKB_E are delayed with respect to the first clock signal CK_O. Particularly, the second clock signal CKB_O is delayed by a half period $1/2T$ with respect to the first clock signal CK_O, the third clock signal CK_E is delayed by a quarter period $1/4T$ with respect to the first clock signal

CK_O, and the fourth clock signal CKB_E is delayed by a three quarter period $\frac{3}{4}T$ with respect to the first clock signal CK_O.

[0070] In response to the transition of a first start signal ST_O from a high state to a low state, a first odd stage SRC_O₁ outputs the first clock signal CK_O of a high state as a first gate driving signal, which is applied to a first gate line GL₁. The second start signal ST_E is delayed by a quarter period $\frac{1}{4}T$ with respect to the first start signal ST_O, but is ahead by a quarter period $\frac{1}{4}T$ with respect to the third clock signal CK_E. When the second start signal ST_E is transitioned from a high state to a low state, a first even stage SRC_E₁ outputs the third clock signal CK_E of a high state as a second gate driving signal, which is applied to a second gate line GL₂. Thus, the second gate driving signal is applied to the even-numbered gate line GL₂, after the first gate driving signal applied to the odd-numbered gate line GL₁ is transitioned from a high state to a low state.

[0071] When the second clock signal CKB_O of a high state is applied to the first gate driving circuit 350 in response to the transition of the first clock signal CK_O from a high state to a low state, a second odd stage SRC_O₂ outputs the second clock signal CKB_O of a high state as the first gate driving signal in response to the first stage driving signal output from the first odd stage SRC_O₁. The first gate driving signal output from the second odd stage SRC_O₂ is applied to a third gate line GL₃. Since the second odd stage SRC_O₂ outputs the first gate driving signal after the first gate driving signal output from the first odd stage SRC_O₁ is transitioned from a high state to a low state, a first blank interval BL₁ exists after the first odd stage SRC_O₁ outputs the first gate driving signal of a high state and before the second odd stage SRC_O₂ outputs the first gate driving signal of a high state.

[0072] When the fourth clock signal CKB_E of a high state is applied to a second even stage SRC_E₂ after the third clock signal CK_E is transitioned from a high state to a low state, the second even stage SRC_E₂ outputs the fourth clock signal CKB_E of a high state as the second gate driving signal in response to the second stage driving signal output from the first even stage SRC_E₁. The second gate driving signal output from the second even stage SRC_E₂ is applied to the fourth gate line GL₄. Since the second even stage SRC_E₂ outputs the second gate driving signal after the first gate driving signal output from the second odd stage SRC_O₂ is transitioned from a high state to a low state, a second blank interval BL₂ exists after the first even stage SRC_E₁ outputs the second gate driving signal having a high state and before the second even stage SRC_E₂ outputs the second gate driving signal having a high state. Thus, the N number of odd stages SRC_O₁ to SRC_O_N and the N number of even stages SRC_E₁ to SRC_E_N are alternately activated to output the first and second gate driving signals, which are alternatively applied to the gate lines GL₁ to GL_{2N}.

[0073] FIG. 11 is a timing diagram of the first and second gate driving circuits according to another exemplary embodiment of the present invention. The first to fourth clock signals CK_O, CKB_O, CK_E and CKB_E each have a high state or a low state during a predetermined period T. For example, the clock signals each have a high state during a first half period $\frac{1}{2}T$ and a low state during the last half period $\frac{1}{2}T$. The second clock signal CKB_O is delayed by a half period $\frac{1}{2}T$ with respect to the first clock signal CK_O, and thus the first and second clock signals CK_O and

CKB_O have the opposite phase to each other during the predetermined period T. The third clock signal CK_E is delayed by a quarter period $\frac{1}{4}T$ with respect to the first clock signal CK_O and the fourth clock signal CKB_E is delayed by a half period $\frac{1}{2}T$ with regard to the third clock signal CK_E. Thus, the third and fourth clock signals CK_E and CKB_E have the opposite phase to each other during the predetermined period T.

[0074] A first start signal ST_O has a high state during a half period $\frac{1}{2}T$ and is transitioned from a high state to a low state before the first clock signal CK_O of a high state is applied to a first odd stage SRC_O₁. The first odd stage SRC_O₁ outputs the first clock signal CK_O having a high state as a first gate driving signal, which is applied to a first gate line GL₁. When the second clock signal CKB_O is applied to a second odd stage SRC_O₂ after the first clock signal CK_O is transitioned from a high state to a low state, the second odd stage SRC_O₂ outputs the second clock signal CKB_O of the high state as the first gate driving signal, in response to the first stage driving signal output from the first odd stage SRC_O₁, which is applied to a third gate line GL₃.

[0075] A second start signal ST_E is delayed by a quarter period $\frac{1}{4}T$ with the first start signal ST_O and has a high state during a half period $\frac{1}{2}T$. When the second start signal ST_E is transitioned from a high state to a low state, a first even stage SRC_E₁ outputs the third clock signal CK_E of a high state as a second gate driving signal, which is applied to a second gate line GL₂. When the fourth clock signal CKB_E of a high state is applied to a second even stage SRC_E₂ after the third clock signal CK_E is transitioned from a high state to a low state, the second even stage SRC_E₂ outputs the fourth clock signal CKB_E of a high state as the second gate driving signal in response to a second stage driving signal output from the first even stage SRC_E₁. The second gate driving signal output from the second even stage SRC_E₂ is applied to a fourth gate line GL₄.

[0076] As shown in FIG. 11, the first gate driving signal output from the first or second odd stage SRC_O₁ or SRC_O₂ has a first dummy interval D₁ during a quarter period $\frac{1}{4}T$ and a first active interval A₁ following the first dummy interval D₁ during a quarter period $\frac{1}{4}T$.

[0077] The second gate driving signal output from the first or second even stage SRC_E₁ or SRC_E₂ has also a second dummy interval D₂ during a quarter period $\frac{1}{4}T$ and a second active interval A₂ following the second dummy interval D₂ during a quarter period $\frac{1}{4}T$. Since the second gate driving signal applied to the second gate line GL₂ is delayed by a quarter period $\frac{1}{4}T$ with respect to the first gate driving signal applied to the first gate line GL₁, the active interval A₁ of the first gate driving signal applied to the first gate line GL₁ is overlapped with the dummy interval D₂ of the second gate driving signal applied to the second gate line GL₂. Further, the first gate driving signal applied to the third gate line GL₃ is delayed by a quarter period $\frac{1}{4}T$ with respect to the second driving signal applied to the second gate line GL₂, and thus, the active interval A₂ of the second gate driving signal applied to the second gate line GL₂ is overlapped with the dummy interval D₁ of the first gate driving signal applied to the third gate line GL₃.

[0078] The driving chip 370 outputs a data driving signal during the first or second active period A₁ or A₂. For example, the driving chip 370 outputs a first data driving

signal DATA1 at the first active interval A_1 of the first gate driving signal applied to the first gate line GL_1 and outputs a second data driving signal DATA2 at the second active interval A_2 of the second gate driving signal applied to the second gate line GL_2 . Thus, the gate lines GL_1 to GL_{2n} alternately receive the first and second gate driving signals.

[0079] Since the first gate driving circuit 350 outputting the first gate driving signal to the odd gate lines and the second gate driving circuit 360 outputting the second gate driving signal to the even gate lines are independently operated, the first and second gate driving circuits 350 and 360 are not subordinately connected to each other. Thus, the LCD apparatus 800 prevents the first and second gate driving signals from distorting due to a line resistance of the gate lines. Therefore, the LCD apparatus 800 improves its operational properties. Further, since the first and second gate driving circuits 350 and 360 are disposed on the LCD panel such that the LCD panel has a symmetric structure and the LCD panel is formed with a single chip, the LCD apparatus 800 has a reduced BM width and improved display property.

[0080] FIG. 12 is a plan view showing an LCD apparatus with dual display screen according to further exemplary embodiment of the present invention. The same reference numerals are used to refer the same or like parts those described in FIG. 1 and any further explanation is omitted. An LCD apparatus with a dual display screen 1000 includes a first LCD panel 300, a second LCD panel 900, a driving chip 370, a first FPC 400 and a second FPC 450.

[0081] The first LCD panel 300 includes a first display area DA_1 for displaying a first image and first, second, third and fourth peripheral areas PA_1 , PA_2 , PA_3 and PA_4 surrounding the first display area DA_1 . The first LCD panel 300 includes a $2N$ number of first gate lines GL_{1-1} to GL_{1-2n} and an M number of first data lines DL_{1-1} to DL_{1-m} substantially perpendicular to the first gate lines GL_{1-1} to GL_{1-2n} , at the first display area DA_1 .

[0082] A first gate driving circuit 350 is formed on the first peripheral area PA_1 and a second gate driving circuit 360 is formed on the second peripheral area PA_2 . The first gate driving circuit 350 outputs first gate driving signals to odd-numbered gate lines of the first gate lines GL_{1-1} to GL_{1-2n-1} , and the second gate driving circuit 360 outputs second gate driving signals to even-numbered gate lines of the first gate lines GL_{1-2} to GL_{1-2n} .

[0083] The driving chip 370 is mounted on the third peripheral area PA_3 , to which the first FPC 400 is attached. The first FPC 400 is electrically connected to the driving chip 370 to apply external signals to the driving chip 370. The driving chip 370 outputs the first data signal to the first data lines DL_{1-1} to DL_{1-m} , and outputs first and second gate control signals to the first and second gate driving circuits 350 and 360, respectively. In response to the first and second gate control signals, the first and second gate driving circuits 350 and 360 output first and second gate driving signals to the first gate lines GL_{1-1} to GL_{1-2n} .

[0084] The second LCD panel 900 includes a second display area DA_2 for displaying a second image, and fifth and sixth peripheral areas PA_5 and PA_6 adjacent to the second display area DA_2 . On the sixth peripheral area PA_6 , a third gate driving circuit 910 is formed. The second LCD panel 900 includes a I number of second gate lines GL_{2-1} to GL_{2-4} and a J number of second data line DL_{2-1} to DL_{2-j} substantially perpendicular to the second gate lines GL_{2-1} to

GL_{2-1} , at the second display area DA_2 . The driving chip 370 outputs the second data signal to the second LCD panel 900 and a third gate control signal to the third gate driving circuit 910. The third gate driving circuit 910 sequentially outputs a third gate driving signal to the second gate lines GL_{2-1} to GL_{2-i} in response to the third gate control signal. The data signal is applied to second data lines DL_{2-1} to DL_{2-i} , and the third gate driving signal is applied to the second gate lines GL_{2-1} to GL_{2-i} . The “ I ” and “ N ” are an integer identical to or greater than two, and the “ I ” is equal to or less than the “ N ”. Also, the “ J ” and “ M ” are an integer identical to or greater than two, and the “ J ” is equal to or less than the “ M ”.

[0085] The first and second LCD panels 300 and 900 are electrically connected to each other by means of the second FPC 450. The second FPC 450 includes a first end portion attached to the fourth peripheral area PA_4 of the first LCD panel 300 and a second end portion attached to the fifth peripheral area PA_5 of the second LCD panel 900. Thus, although the first driving chip 400 is mounted onto the first peripheral area PA_1 , the driving chip 370 is electrically connected to the second LCD panel 900 by means of the second FPC 450. One end of the first data lines DL_{1-1} to DL_{1-j} is electrically connected to the second data line DL_{2-1} to DL_{2-j} via a connection line CL_{1-1} to CL_{1-j} formed at the second FPC 450. Thus, the second data signal output from the driving chip 370 is applied to the second data line DL_{2-1} to DL_{2-j} via the connection line CL_{1-1} to CL_{1-j} .

[0086] Although FIG. 12 shows an LCD apparatus in which two gate driving circuits 350 and 360 are connected to the first LCD panel 300, the LCD apparatus may include one gate driving circuit to output gate driving signals to the first gate lines of the first LCD panel 300.

[0087] Although the exemplary embodiments of the present invention have been described, it is understood that the present invention should not be limited to these exemplary embodiments but various changes and modifications can be made by one ordinary skilled in the art within the spirit and scope of the present invention as hereinafter claimed.

What is claimed is:

1. A display apparatus comprising:

a plurality of pixels connected to a plurality of gate lines and a plurality of data lines;

a gate driving circuit configured to supply gate signals to the plurality of gate lines; and

a data driving circuit comprising a plurality of first terminals electrically connected to the plurality of data lines and a plurality of second terminals electrically connected to the gate driving circuit, the data driving circuit configured to supply data signals to the plurality of data lines through the plurality of first terminals,

wherein the plurality of first terminals are disposed adjacent to the plurality of pixels and the plurality of second terminals, and

wherein the plurality of first terminals and the plurality of second terminals are electrically isolated from each other.

2. The display apparatus of claim 1, wherein the data driving circuit supplies a first clock signal, a second clock signal and a start signal to the gate driving circuit through the plurality of second terminals.

3. The display apparatus of claim 1, wherein the data driving circuit further comprises a plurality of third terminals adjacent to the plurality of first terminals and the plurality of second terminals.

4. The display apparatus of claim 1, further comprising: a substrate comprising a display area and a peripheral area located adjacent to the display area, wherein the plurality of pixels are disposed in the display area, wherein the gate driving circuit and the data driving circuit are located onto the peripheral area.

5. The display apparatus of claim 4, wherein the peripheral area comprises a first peripheral area where the gate driving circuit is located and a second peripheral area where the data driving circuit is located, the second peripheral area is substantially perpendicular to the first peripheral area.

6. The display apparatus of claim 1, wherein the gate driving circuit comprises a series of stages arranged along a first direction,

wherein the plurality of gate lines are divided into odd-numbered gate lines and even-numbered gate lines,

wherein the series of stages are divided into odd-numbered stages connected to the odd-numbered gate lines and even-numbered stages connected to the even-numbered gate lines, the odd-numbered stages and the even-numbered stages are arranged from a first stage and a second stage, respectively.

7. The display apparatus of claim 6, wherein the first stage and a last stage receive a start signal simultaneously.

8. The display apparatus of claim 6, wherein a first clock signal and a second clock signal reversed from the first clock signal are input from the data driving circuit to the first stage and the second stage, respectively.

9. The display apparatus of claim 1, wherein the plurality of first terminals are disposed substantially directly between the plurality of pixels and the plurality of second terminals.

* * * * *

专利名称(译)	栅极驱动电路和具有它的显示装置		
公开(公告)号	US20190259350A1	公开(公告)日	2019-08-22
申请号	US16/398986	申请日	2019-04-30
[标]申请(专利权)人(译)	三星显示有限公司		
申请(专利权)人(译)	三星DISPLAY CO. , LTD.		
当前申请(专利权)人(译)	三星DISPLAY CO. , LTD.		
[标]发明人	JEON JIN KIM HYUNG GUEL KIM DONG HWAN		
发明人	JEON, JIN KIM, HYUNG GUEL KIM, DONG HWAN		
IPC分类号	G09G3/36 G11C19/28		
CPC分类号	G09G3/3692 G09G3/3677 G09G3/3648 G11C19/28 G09G2300/0842 G09G2310/0281 G06F3/1423 G09G3/3225 G09G2310/0251 G09G3/3688 G09G2300/0408 G09G2300/0426		
优先权	1020030027087 2003-04-29 KR 1020030081525 2003-11-18 KR		
外部链接	Espacenet USPTO		

摘要(译)

提供一种液晶显示装置，包括设置在液晶显示器上的栅极驱动电路。该装置还包括数据驱动芯片，设置在液晶显示板上，以将数据驱动信号施加到数据线。栅极驱动电路包括并联连接的多个级。每个级的奇数级每个将栅极驱动信号施加到栅极线的奇数栅极线，响应于第一时钟信号，并且每个级的偶数级将栅极驱动信号施加到偶数响应于具有与第一时钟信号的相位相反的相位的第二时钟信号，栅极线的栅极线。

