



US 20150055075A1

(19) **United States**
(12) **Patent Application Publication**
NAOE et al.

(10) **Pub. No.: US 2015/0055075 A1**
(43) **Pub. Date: Feb. 26, 2015**

(54) **LIQUID CRYSTAL DISPLAY DEVICE AND METHOD OF MANUFACTURING THE SAME**

(71) Applicant: **JAPAN DISPLAY INC.**, Minato-ku (JP)

(72) Inventors: **Yasuo NAOE**, Kanazawa-shi (JP);
Kazuyuki HARADA, Nonoichi-shi (JP)

(73) Assignee: **JAPAN DISPLAY INC.**, Minato-ku (JP)

(21) Appl. No.: **14/505,292**

(22) Filed: **Oct. 2, 2014**

Related U.S. Application Data

(63) Continuation of application No. 13/493,470, filed on Jun. 11, 2012, now Pat. No. 8,885,129.

Foreign Application Priority Data

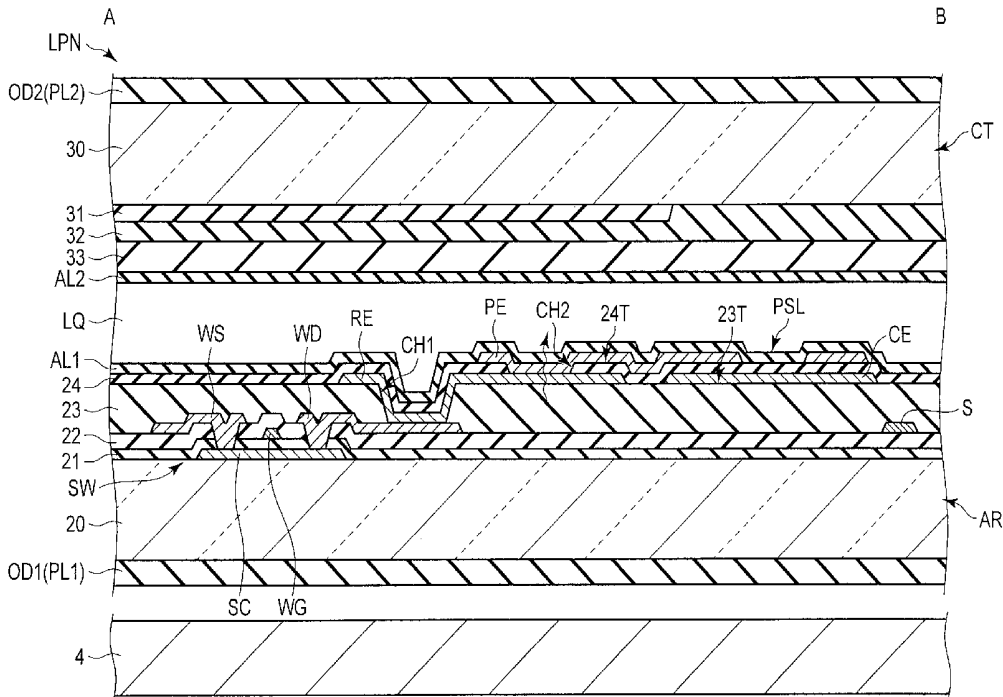
Jun. 13, 2011 (JP) 2011-131271

Publication Classification

(51) **Int. Cl.**
G02F 1/1343 (2006.01)
G02F 1/1362 (2006.01)
G02F 1/1333 (2006.01)
(52) **U.S. Cl.**
CPC **G02F 1/134336** (2013.01); **G02F 1/13439** (2013.01); **G02F 1/133345** (2013.01); **G02F 1/136227** (2013.01); **G02F 2001/134372** (2013.01)
USPC **349/138**

(57) **ABSTRACT**

According to one embodiment, a liquid crystal display device includes a first substrate including an organic insulation film including a first contact hole penetrating to the switching element, an island-shaped relay electrode and a common electrode which are formed on the organic insulation film, an interlayer insulation film including a second contact hole at a position different from a position of the first contact hole, a pixel electrode which is formed on the interlayer insulation film and includes a slit which is opposed to the common electrode, and an alignment film covering the pixel electrode and the interlayer insulation film.



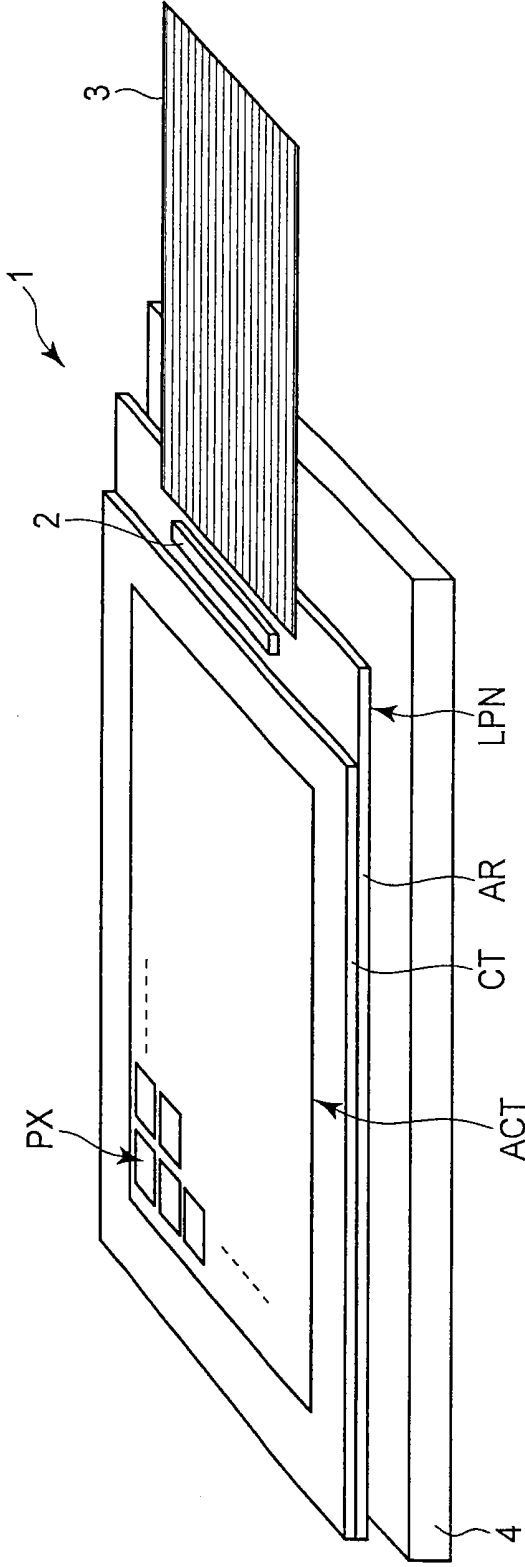


FIG. 1

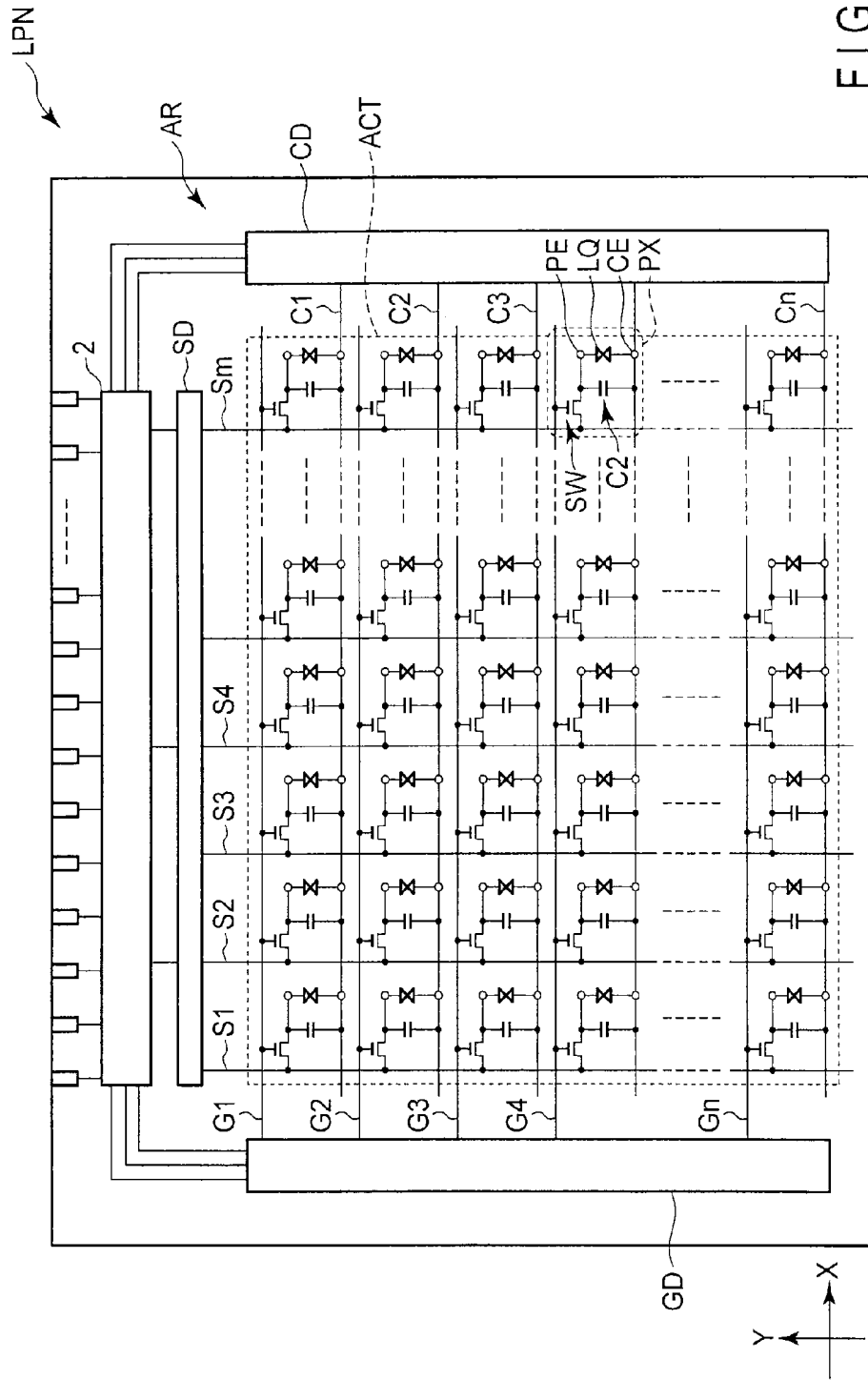


FIG. 2

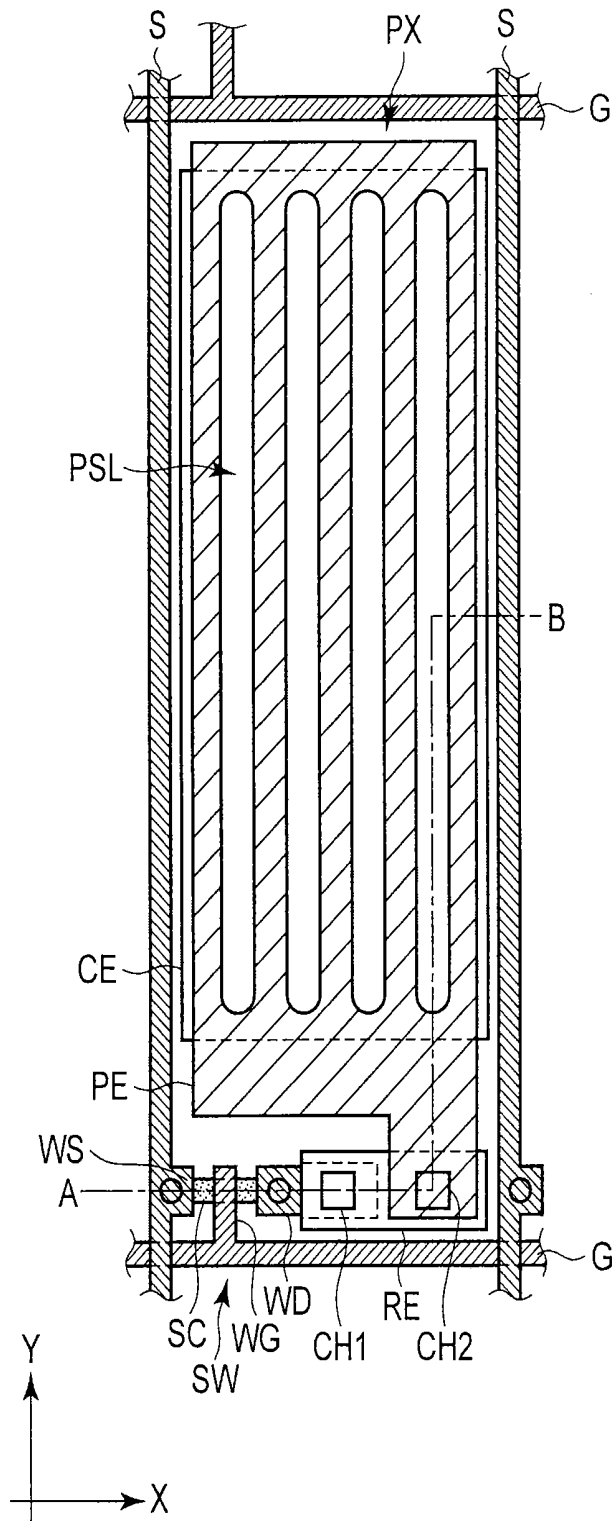


FIG. 3

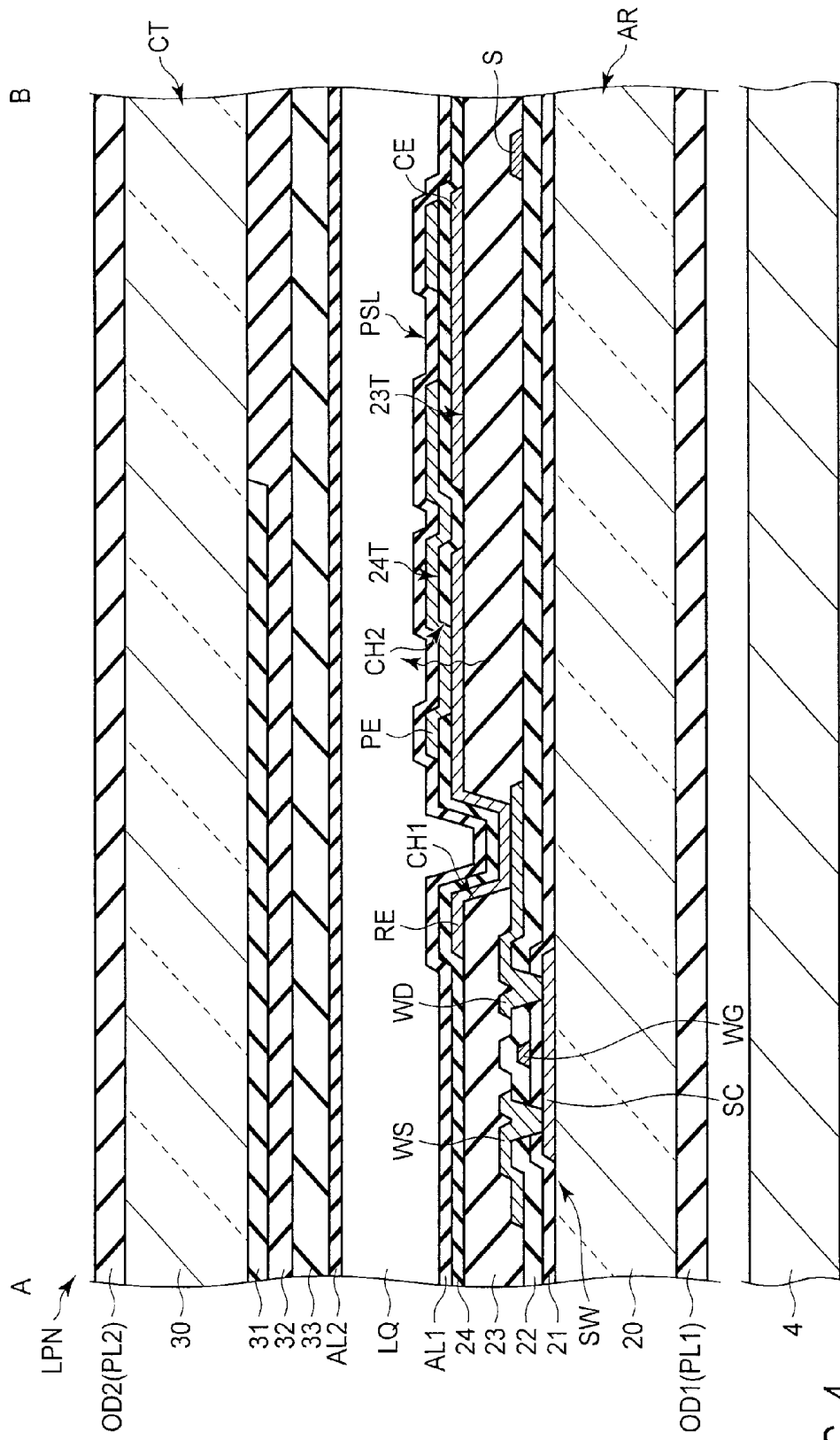


FIG. 4

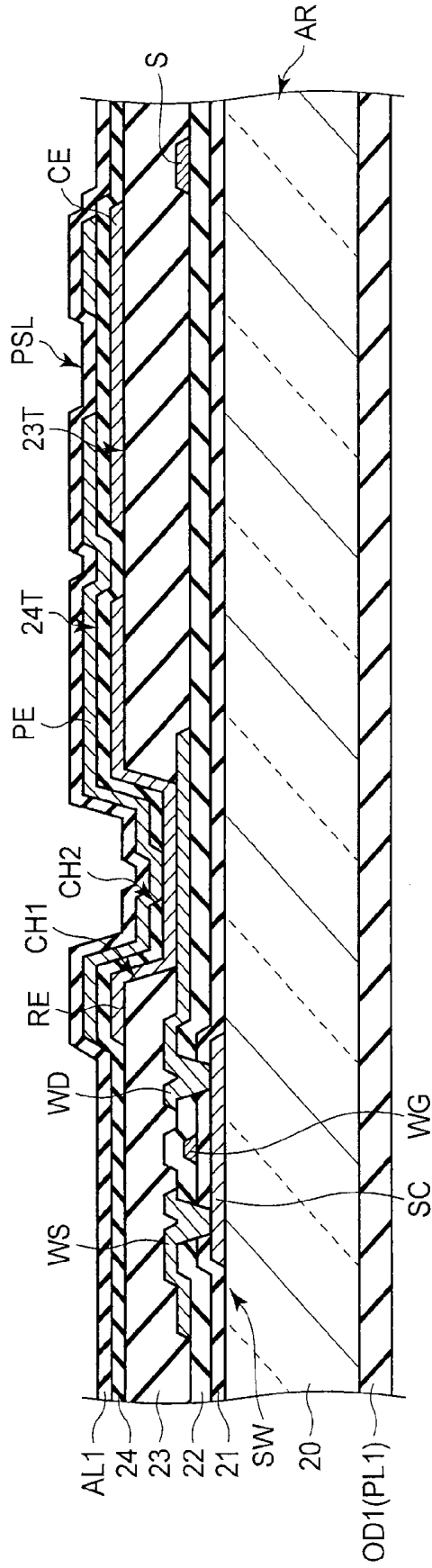


FIG. 5

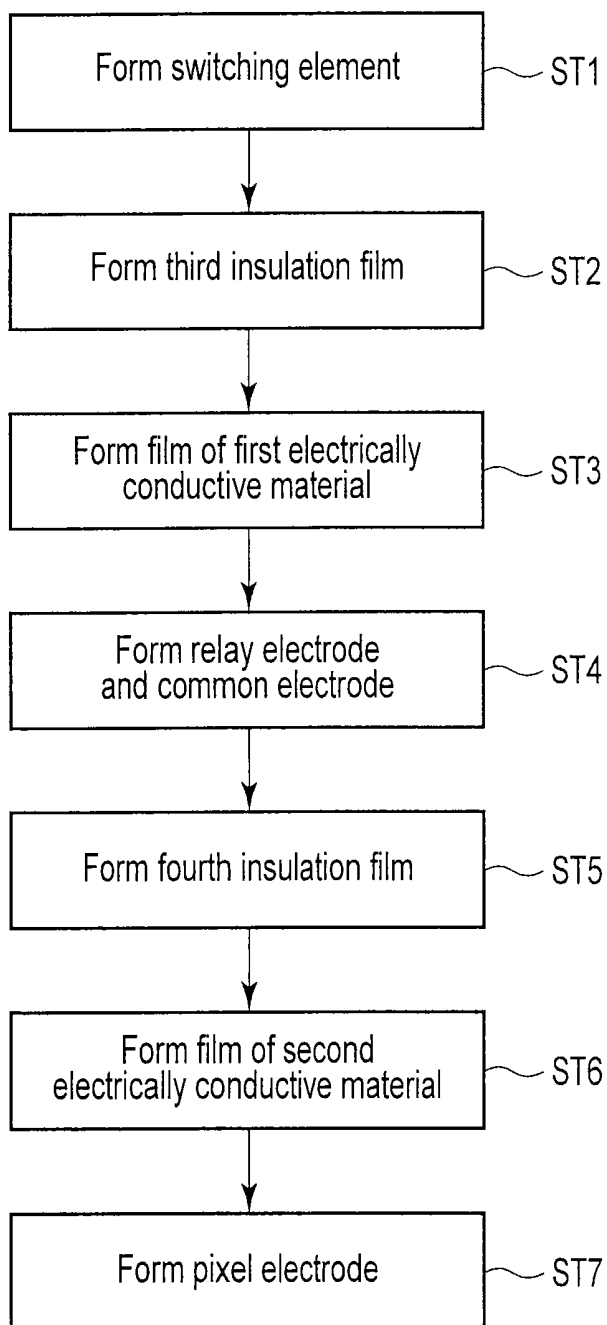


FIG. 6

LIQUID CRYSTAL DISPLAY DEVICE AND METHOD OF MANUFACTURING THE SAME

CROSS-REFERENCE TO RELATED APPLICATIONS

[0001] This application is based upon and claims the benefit of priority from prior Japanese Patent Application No. 2011-131271, filed Jun. 13, 2011, the entire contents of which are incorporated herein by reference.

FIELD

[0002] Embodiments described herein relate generally to a liquid crystal display device and a method of manufacturing the same.

BACKGROUND

[0003] By virtue of such advantageous features as light weight, small thickness and low power consumption, liquid crystal display devices have been used in various fields as display devices of OA equipment, such as personal computers, and TVs. In recent years, liquid crystal display devices have also been used as display devices of portable terminal equipment such as mobile phones, car navigation apparatuses, game machines, etc.

[0004] In recent years, liquid crystal display panels of a fringe field switching (FFS) mode have been put to practical use.

BRIEF DESCRIPTION OF THE DRAWINGS

[0005] FIG. 1 is a view which schematically illustrates a structure of a liquid crystal display device according to an embodiment.

[0006] FIG. 2 is a view which schematically illustrates a structure and an equivalent circuit of a liquid crystal display panel shown in FIG. 1.

[0007] FIG. 3 is a schematic plan view which illustrates a structure of a pixel in an array substrate shown in FIG. 2, as viewed from a counter-substrate side.

[0008] FIG. 4 is a cross-sectional view which schematically shows a cross-sectional structure of the liquid crystal display panel, in a case where the pixel shown in FIG. 3 is cut along line A-B.

[0009] FIG. 5 is a cross-sectional view which schematically shows a cross-sectional structure of an array substrate according to a comparative example.

[0010] FIG. 6 is a flow chart illustrating a part of a fabrication process of the array substrate according to the embodiment.

DETAILED DESCRIPTION

[0011] In general, according to one embodiment, a liquid crystal display device includes: a first substrate including an insulative substrate; a switching element formed above the insulative substrate; an organic insulation film which is disposed above the insulative substrate and the switching element and includes a first contact hole penetrating to the switching element; an island-shaped relay electrode which is formed on the organic insulation film, extends to the first contact hole and is electrically connected to the switching element; a common electrode formed on the organic insulation film and spaced apart from the relay electrode; an interlayer insulation film which is disposed on the relay electrode

and the common electrode and includes a second contact hole penetrating to the relay electrode at a position different from a position of the first contact hole; a pixel electrode which is formed on the interlayer insulation film, extends to the second contact hole, is electrically connected to the relay electrode, and includes a slit which is opposed to the common electrode; and an alignment film covering the pixel electrode and the interlayer insulation film; a second substrate which is disposed to be opposed to the first substrate; and a liquid crystal layer including liquid crystal molecules held between the first substrate and the second substrate.

[0012] According to another embodiment, a liquid crystal display device includes: a first substrate including an insulative substrate; a switching element formed above the insulative substrate; an organic insulation film which is disposed above the insulative substrate and the switching element, has a first top surface and includes a first contact hole penetrating to the switching element from the first top surface; an island-shaped relay electrode which is formed continuous with the first top surface of the organic insulation film and the first contact hole and is electrically connected to the switching element; a common electrode formed on the first top surface of the organic insulation film and spaced apart from the relay electrode; an interlayer insulation film which is disposed on the relay electrode and the common electrode, has a second top surface and includes a second contact hole penetrating, from the second top surface, to the relay electrode formed on the first top surface; a pixel electrode which is formed on the second top surface of the interlayer insulation film, is stacked on the relay electrode in the second contact hole, and includes a slit which is opposed to the common electrode; and an alignment film covering the pixel electrode and the interlayer insulation film; a second substrate which is disposed to be opposed to the first substrate; and a liquid crystal layer including liquid crystal molecules held between the first substrate and the second substrate.

[0013] According to another embodiment, a liquid crystal display device includes: a first substrate including an insulative substrate; an organic insulation film formed above the insulative substrate; a first electrode formed on the organic insulation film; an inorganic insulation film which is disposed on the first electrode and includes a contact hole penetrating to the first electrode; and a second electrode which is formed on the inorganic insulation film and is electrically connected to the first electrode via the contact hole, each of the first electrode and the second electrode having a rougher film structure than the inorganic insulation film.

[0014] According to another embodiment, a method of manufacturing a liquid crystal display device in which a liquid crystal layer is held between a first substrate, which includes a pixel electrode and a common electrode, and a second substrate, includes: forming a switching element above an insulative substrate; forming a first contact hole, which penetrates to the switching element, in an organic insulation film which covers the switching element; forming a film of a first electrically conductive material on the organic insulation film and in the first contact hole; patterning the first electrically conductive material, to form an island-shaped relay electrode which is electrically connected to the switching element in the first contact hole, and a common electrode which is spaced apart from the relay electrode; forming a second contact hole, which penetrates to the relay electrode, in an interlayer insulation film, which covers the relay electrode and the common electrode, at a position different from

a position of the first contact hole; forming a film of a second electrically conductive material on the interlayer insulation film and in the second contact hole; and patterning the second electrically conductive material, to form a pixel electrode which is electrically connected to the relay electrode in the second contact hole and includes a slit which is opposed to the common electrode.

[0015] Embodiments will now be described in detail with reference to the accompanying drawings. In the drawings, structural elements having the same or similar functions are denoted by like reference numerals, and an overlapping description is omitted.

[0016] FIG. 1 is a view which schematically illustrates a structure of a liquid crystal display device according to an embodiment.

[0017] Specifically, the liquid crystal display device 1 includes an active-matrix-type liquid crystal display panel LPN, and a backlight 4 which illuminates the liquid crystal display panel LPN. In the example illustrated, the liquid crystal display device 1 includes, as signal sources that are necessary for driving the liquid crystal display panel LPN, a driving IC chip 2 and a flexible wiring board 3.

[0018] The liquid crystal display panel LPN is configured to include an array substrate (first substrate) AR, a counter-substrate (second substrate) CT which is disposed to be opposed to the array substrate AR, and a liquid crystal layer (not shown) which is held between the array substrate AR and the counter-substrate CT. The liquid crystal display panel LPN includes an active area (screen part) ACT which displays an image. The active area ACT is composed of a plurality of pixels PX which are arrayed in a matrix of $m \times n$ (m and n are positive integers).

[0019] The backlight 4 is disposed on the back side of the array substrate AR. Various modes are applicable to the backlight 4. As the backlight 4, use may be made of either a backlight including a light-emitting diode (LED) as a light source, or a backlight including a cold cathode fluorescent lamp (CCFL) as a light source. A description of the detailed structure of the backlight 4 is omitted.

[0020] FIG. 2 is a view which schematically shows a structure and an equivalent circuit of the liquid crystal display panel LPN shown in FIG. 1.

[0021] The array substrate AR includes, in the active area ACT, an n -number of gate lines G ($G1$ to Gn), an n -number of capacitance lines C ($C1$ to Cn), an m -number of source lines S ($S1$ to Sm), an $(m \times n)$ number of switching elements SW, each of which is electrically connected to the gate line G and source line S in each pixel PX, an $(m \times n)$ number of pixel electrodes PE, each of which is electrically connected to the switching element SW in each pixel PX, and a common electrode CE which is a part of the capacitance line C and is opposed to the pixel electrode PE. A storage capacitance CS is formed between the capacitance line C and pixel electrode PE.

[0022] Each of the gate lines G is led out of the active area ACT and is connected to a first driving circuit GD. Each of the source lines S is led out of the active area ACT and is connected to a second driving circuit SD. Each of the capacitance lines C is led out of the active area ACT and is connected to a third driving circuit CD. The first driving circuit GD, second driving circuit SD and third driving circuit CD are formed on the array substrate AR and are connected to the driving IC chip 2. In the example illustrated, the driving IC chip 2 is

mounted on the array substrate AR, on the outside of the active area ACT of the liquid crystal display panel LPN.

[0023] In addition, the liquid crystal display panel LPN of the illustrated example includes the pixel electrode PE and common electrode CE on the array substrate AR, and a fringe field switching (FFS) mode is applied to the liquid crystal display panel LPN. In the FFS mode, liquid crystal molecules, which constitute the liquid crystal layer LQ, are switched by mainly using a lateral electric field which is produced between the pixel electrode PE and common electrode CE (in particular, that part of a fringe electric field, which is substantially parallel to a major surface of the substrate).

[0024] FIG. 3 is a schematic plan view which illustrates the structure of the pixel PX in the array substrate AR shown in FIG. 2, as viewed from the counter-substrate CT side. This plan view shows an example of the pixel layout, and the embodiment is not limited to this pixel layout.

[0025] The gate lines G extend in a first direction X . The source lines S extend in a second direction Y which crosses the first direction X . The first direction X is perpendicular to the second direction Y . The switching element SW is disposed near an intersection between the gate line G and the source line S , and is composed of, for example, a thin-film transistor (TFT). The switching element SW includes, for example, a polysilicon semiconductor layer SC as a semiconductor layer.

[0026] A gate electrode WG of the switching element SW is located above the polysilicon semiconductor layer SC, and is electrically connected to the gate line G (in the example illustrated, the gate electrode WG is formed integral with the gate line G). A source electrode WS of the switching element SW is electrically connected to the source line S (in the example illustrated, the source electrode WS is formed integral with the source line S).

[0027] A relay electrode RE is formed in an island shape. In an X - Y plane, the relay electrode RE extends to a position overlapping a drain electrode WD. The relay electrode RE is electrically connected to the drain electrode WD of the switching element SW via a first contact hole CH1.

[0028] The common electrode CE is formed, for example, in a substantially rectangular shape. In the X - Y plane, the common electrode CE is spaced apart from the relay electrode RE. In addition, this common electrode CE is electrically connected to the capacitance line (not shown) and is set at a common potential.

[0029] The pixel electrode PE is formed, for example, in a substantially rectangular shape. In the X - Y plane, the pixel electrode PE is disposed above the common electrode CE. In addition, a plurality of slits PSL, which are opposed to the common electrode CE, are formed in the pixel electrode PE. In the X - Y plane, the pixel electrode PE extends to a position overlapping the relay electrode RE. The pixel electrode PE is electrically connected to the relay electrode RE via a second contact hole CH2 which is formed at a position different from the position of the first contact hole CH1. Thereby, the pixel electrode PE is electrically connected to the switching element SW.

[0030] FIG. 4 is a cross-sectional view which schematically shows a cross-sectional structure of the liquid crystal display panel LPN, in a case where the pixel PX shown in FIG. 3 is cut along line A-B.

[0031] Specifically, the array substrate AR is formed by using a first insulative substrate 20 with light transmissivity, such as a glass substrate. The array substrate AR includes the

switching element SW on an inner surface of the first insulative substrate **20** (i.e. that surface of the first insulative substrate **20**, which is opposed to the counter-substrate CT). The switching element SW illustrated in this example is a top-gate type thin-film transistor. The polysilicon semiconductor layer SC is formed above the first insulative substrate **20**. The polysilicon semiconductor layer SC is covered with a first insulation film **21**. In addition, the first insulation film **21** is also disposed above the first insulative substrate **20**.

[0032] The gate electrode WG of the switching element SW is formed on the first insulation film **21**, and is located above the polysilicon semiconductor layer SC. The gate electrode WG is covered with a second insulation film **22**. In addition, the second insulation film **22** is also disposed on the first insulation film **21**.

[0033] The source electrode WS and drain electrode WD of the switching element SW are formed on the second insulation film **22**. The source electrode WS and drain electrode WD are put in contact with the polysilicon semiconductor layer SC via contact holes which penetrate the first insulation film **21** and second insulation film **22**. The source electrode WS and drain electrode WD are covered with a third insulation film **23**. In addition, the third insulation film **23** is also disposed on the second insulation film **22**.

[0034] The third insulation film **23** corresponds to an organic insulation film which is disposed above the switching element SW, and is formed of a transparent organic material. In addition, the third insulation film **23** has a substantially planar top surface **23T** and the first contact hole CH1 which penetrates, from the top surface **23T**, to the drain electrode WD of the switching element SW.

[0035] The relay electrode RE is formed on the top surface **23T** of the third insulation film **23**. In addition, the relay substrate RE is also formed in the first contact hole CH1. Specifically, the relay electrode RE, which is formed on the top surface **23T**, extends to the first contact hole CH1 and comes in contact with the drain electrode WD of the switching element SW. In other words, the relay electrode RE is formed continuous with the top surface **23T** and the first contact hole CH1. Thereby, the relay electrode RE is electrically connected to the switching element SW.

[0036] The common electrode CE is formed on the top surface **23T** of the third insulation film **23** and is spaced apart from the relay electrode RE.

[0037] The relay electrode RE and common electrode CE are covered with a fourth insulation film **24**. In addition, the fourth insulation film **24** is also disposed on the third insulation film **23**. The fourth insulation film **24** corresponds to an interlayer insulation film which is disposed on the relay electrode RE and common electrode CE, and is formed of an inorganic material including silicon (Si), such as silicon oxide (SiO). Specifically, the fourth insulation film **24**, which covers the relay electrode RE, covers the entirety of the relay electrode RE at a position overlapping the first contact hole CH1. Thus, the fourth insulation film **24** includes no contact hole at a position overlapping the first contact hole CH1.

[0038] The fourth insulation film **24** has a top surface **24T** and the second contact hole CH2 which penetrates from the top surface **24T** to the relay electrode RE. The second contact hole CH2 penetrates to the relay electrode RE at a position different from a position immediately above the first contact hole CH1. Specifically, the second contact hole CH2 pen-

etrates from the top surface **24T** to the relay electrode RE which is formed on the top surface **23T** of the third insulation film **23**.

[0039] The pixel electrode PE is formed on the top surface **24T** of the fourth insulation film **24**. In addition, the pixel electrode PE is also formed in the second contact hole CH2 and is stacked on the relay electrode RE in the second contact hole CH2. Specifically, the pixel electrode PE, which is formed on the top surface **24T**, extends to the second contact hole CH2 and comes in contact with the relay electrode RE. In other words, the pixel electrode PE is formed continuous with the top surface **24T** and the second contact hole CH2. Thereby, the pixel electrode PE is electrically connected to the relay electrode RE. In addition, the pixel electrode PE includes the slit PSL. The slit PSL is formed immediately above the common electrode CE.

[0040] The relay electrode RE, common electrode CE and pixel electrodes PE are formed of a transparent, electrically conductive material such as indium tin oxide (ITO) or indium zinc oxide (IZO). The pixel electrode PE is covered with a first alignment film AL1. In addition, the first alignment film AL1 also covers the fourth insulation film **24**. The first alignment film AL1 is disposed on that surface of the array substrate AR, which is in contact with the liquid crystal layer LQ.

[0041] In the meantime, the gate line G, which is integral with the gate electrode WG, is formed on the first insulation film **21**, and is covered with the second insulation film **22**. In addition, the source line S, which is integral with the source electrode WS, is formed on the second insulation film **22**, and is covered with the third insulation film **23**.

[0042] In the array substrate AR having the above-described structure, the relay electrode RE is stacked on the exposed drain electrode WD in the first contact hole CH1, and this relay electrode RE is covered with the fourth insulation film **24**. Specifically, in the first contact hole CH1, the relay electrode RE, fourth insulation film **24** and first alignment film AL1 are stacked in the named order, and the pixel electrode PE is absent. In addition, in the second contact hole CH2, the pixel electrode PE is stacked on the exposed relay electrode RE. Specifically, in the second contact hole CH2, the pixel electrode PE and first alignment film AL1 are stacked in the named order.

[0043] On the other hand, the counter-substrate CT is formed by using a second insulative substrate **30** with light transmissivity, such as a glass substrate. The counter-substrate CT includes a black matrix **31** which partitions pixels PX, a color filter **32** and an overcoat layer **33** on an inner surface of the second insulative substrate **30** (i.e. that surface of the second insulative substrate **30**, which is opposed to the array substrate AR).

[0044] The black matrix **31** is formed on the inner surface of the second insulative substrate **30** so as to be opposed to wiring portions, such as gate lines G, source lines G and switching elements SW, which are provided on the array substrate AR. The color filter **32** is formed on the inner surface of the second insulative substrate **30**, and is formed of resin materials which are colored in mutually different colors, e.g. three primary colors of red, blue and green. The resin material colored in red is disposed in association with a red pixel. Similarly, the resin material colored in blue is disposed in association with a blue pixel, and the resin material colored in green is disposed in association with a green pixel.

[0045] The overcoat layer **33** is formed on the black matrix **31** and color filter **32**. The overcoat layer **33** planarizes asperi-

ties on the surface of the black matrix **31** and color filter **32**. The overcoat layer **33** is covered with a second alignment film AL2. The second alignment film AL2 is disposed on that surface of the counter-substrate CT, which is in contact with the liquid crystal layer LQ.

[0046] The above-described array substrate AR and counter-substrate CT are disposed such that their first alignment film AL1 and second alignment film AL2 are opposed to each other. In this case, spacers (not shown) (e.g. columnar spacers which are formed of a resin material so as to be integral with one of the substrates) are disposed between the array substrate AR and the counter-substrate CT. Thereby, a predetermined cell gap is created. The array substrate AR and counter-substrate CT are attached by a sealant in the state in which the predetermined cell gap is created therebetween. The liquid crystal layer LQ is composed of a liquid crystal composition including liquid crystal molecules which are sealed in the gap created between the first alignment film AL1 of the array substrate AR and the second alignment film AL2 of the counter-substrate CT.

[0047] The backlight BL is disposed on the back side of the liquid crystal display panel LPN having the above-described structure. A first optical element OD1 including a first polarizer PL1 is disposed on one of the outer surfaces of the liquid crystal display panel LPN, that is, an outer surface of the first insulative substrate **20** which constitutes the array substrate AR. In addition, a second optical element OD2 including a second polarizer PL2 is disposed on the other outer surface of the liquid crystal display panel LPN, that is, an outer surface of the second insulative substrate **30** which constitutes the counter-substrate CT.

[0048] The first alignment film AL1 and second alignment film AL2 are subjected to alignment treatment in the same direction in the X-Y plane. Accordingly, in the state in which no electric field is produced between the pixel electrode PE and common electrode CE, the liquid crystal molecules included in the liquid crystal layer LQ are initially aligned in the alignment treatment direction of the first alignment film AL1 and second alignment film AL2 in the X-Y plane. In the state in which a fringe electric field is produced between the pixel electrode PE and common electrode CE, the liquid crystal molecules are aligned in a direction different from the initial alignment direction in the X-Y plane.

[0049] Next, referring to FIG. 6, a brief description is given of a method of manufacturing the liquid crystal display device having the above-described structure.

[0050] To start with, films of a semiconductor material, an electrically conductive material and an insulation film material are formed on the first insulative substrate **20** for fabricating the array substrate AR, and these films are patterned in desired shapes. Thereby, a first insulation film **21**, a second insulation film **22**, a gate line G, a source line S and a switching element SW are formed (ST1).

[0051] Then, using a transparent organic material, a third insulation film **23**, which covers the switching element SW, etc., is formed. At this time, a first contact hole CH1, which penetrates to the switching element SW, is formed in the third insulation film **23** (ST2).

[0052] Thereafter, a film of a first conductive material (e.g. ITO) is formed on the third insulation film **23** (ST3).

[0053] Then, by patterning the first conductive material, an island-shaped relay electrode RE which is electrically connected to the switching element SW via the first contact hole

CH1, and a common electrode CE which is spaced apart from the relay electrode RE, are formed (ST4).

[0054] Subsequently, using a transparent inorganic material (e.g. SiO), a fourth insulation film **24**, which covers the relay electrode RE and common electrode CE, is formed. At this time, a second contact hole CH2, which penetrates to the relay electrode RE, is formed in the fourth insulation film **24** at a position different from a position immediately above the first contact hole CH1 (ST5).

[0055] Thereafter, a film of a second conductive material (e.g. ITO) is formed on the fourth insulation film **24** (ST6). By patterning the second conductive material, a pixel electrode PE, which is electrically connected to the relay electrode RE via the second contact hole CH2 and includes a slit that is opposed to the common electrode CE, is formed (ST7).

[0056] The surface of the array substrate AR, which has thus been fabricated, is covered with a first alignment film AL1, and the resultant structure is subjected to alignment treatment such as rubbing treatment or optical alignment treatment.

[0057] On the other hand, a counter-substrate CT is prepared, and the array substrate AR and counter-substrate CT are attached by using a sealant. A liquid crystal layer LQ may be sealed in by dispensing a proper amount of liquid crystal before the array substrate AR and counter-substrate CT are attached. Alternatively, after the array substrate AR and counter-substrate CT are attached, the liquid crystal layer LQ may be injected from a liquid crystal injection hole which is formed by the sealant, and then sealed.

[0058] Thereafter, a first optical element OD1 is attached to the outer surface of the array substrate AR, a second optical element OD2 is attached to the outer surface of the counter-substrate CT, and a signal source is mounted on the liquid crystal display panel LPN.

[0059] The liquid crystal display device is manufactured through the above-described fabrication steps.

[0060] In the above-described manufacturing process, the third insulation film **23** that is formed of the organic material tends to easily absorb moisture in a washing step after the formation of the third insulation film **23** or in a wet step at a time of patterning. Besides, the third insulation film **23** may absorb moisture in the air.

[0061] In the embodiment, the third insulation film **23** is covered with the relay electrode RE, common electrode CE and fourth insulation film **24**. The material which forms the fourth insulation film **24** forms a relatively dense film, while the material which forms the relay electrode RE and common electrode CE forms a rougher film than the material which forms the fourth insulation film **24**. In addition, the material which forms the pixel electrode PE, which is stacked on the relay electrode RE in the second contact hole CH2, forms a rougher film, like the material which forms the relay electrode RE and common electrode CE.

[0062] In some cases, moisture absorbed in the third insulation film **23** is evaporated through a high-temperature process and is released to the outside. When the third insulation film **23** is introduced in the high-temperature process after the third insulation film **23** is covered with the relay electrode RE, common electrode CE and fourth insulation film **24**, the vapor, which is released from the third insulation film **23**, hardly passes through the dense fourth insulation film **24** having a high film density, while the vapor permeates into the parts having a lower film density than the fourth insulation

film **24**, namely the relay electrode PE and common electrode CE which have a rougher film structure than the fourth insulation film **24**.

[0063] However, since the common electrode CE is covered with the fourth insulation film **24**, substantially no passage for discharging vapor, which has entered the common electrode CE, is formed in the common electrode CE. As regards the relay electrode RE, the relay electrode RE is covered with the fourth insulation film **24**, but the relay electrode RE is exposed from the fourth insulation film **24** in the second contact hole CH2, and the pixel electrode PE is stacked on the exposed relay electrode RE. Specifically, in the second contact hole CH2, the relay electrode RE and pixel electrode PE are stacked upward from the top surface **23T** of the third insulation film **23**, and this stacked body is exposed from the dense fourth insulation film **24**. Thus, the stacked body of the relay electrode RE and pixel electrode PE forms a vapor release passage. Specifically, the vapor, which has entered the relay electrode RE from the third insulation film **23**, is released to the outside via the pixel electrode PE in the second contact hole CH2.

[0064] The film thickness of the relay electrode RE is about 30 to 70 nm, and the film thickness of the pixel electrode PE is about 30 to 70 nm. Accordingly, the thickness of the stacked body of the relay electrode RE and pixel electrode PE is about 60 to 140 nm. In addition, the thickness of the third insulation film **23** is about 2 μm to 5 μm , and the thickness of the fourth insulation film **24** is about 200 nm to 300 nm. Accordingly, the thickness of the stacked body of the relay electrode RE and pixel electrode PE is substantially equal to the thickness of the fourth insulation film **24**. As described above, the stacked electrode is provided on the third insulation film **23** that is formed of the organic material, and the fourth insulation film **24** that is formed of the inorganic material stacked on this electrode is configured such that the second contact hole CH2 is provided on the electrode having a lower film density than the fourth insulation film **24**. Thereby, the moisture in the third insulation film **23** is released to the outside via the second contact hole CH2.

[0065] In addition, since such second contact holes CH2 are formed in the respective pixels PX, the second contact holes CH2 are uniformly distributed over the entirety of the active area ACT. Thus, moisture in the third insulation film **23** can be released from the second contact holes CH2 over almost the entirety of the active area ACT.

[0066] Therefore, it is possible to suppress degradation in adhesion between the third insulation film **23** and the fourth insulation film **24**, or lifting of the fourth insulation film **24** due to release of vapor, or occurrence of peeling. Thereby, the occurrence of a defective panel due to lifting or peeling of the fourth insulation film **24** can be suppressed, and a decrease in manufacturing yield can be suppressed.

[0067] In the meantime, the release of vapor from the third insulation film **23** occurs in a high-temperature process, such as baking, in the manufacturing process of the array substrate AR, and the release of vapor substantially ends before the array substrate AR is attached to the counter-substrate CT. Thus, a problem due to release of vapor (e.g. a problem such as generation of bubbles in the liquid crystal layer LQ) hardly occurs after the array substrate AR and counter-substrate CT are attached.

[0068] Next, a comparative example is described.

[0069] FIG. 5 is a cross-sectional view which schematically shows a cross-sectional structure of an array substrate AR according to the comparative example.

[0070] In the comparative example, a second contact hole CH2 of the fourth insulation film **24** is formed at a position immediately above the first contact hole CH1. Specifically, in the first contact hole CH1, a relay electrode RE is stacked on the exposed drain electrode WD, and the relay electrode RE is covered with the fourth insulation film **24**. The fourth insulation film **24** has the second contact hole CH2 which exposes the relay electrode RE in the first contact hole CH1. In the second contact hole CH2, the pixel electrode PE is stacked on the exposed relay electrode RE. In this manner, the stacked body of the relay electrode RE and the pixel electrode PE is formed inside the first contact hole CH1, and is not formed on the top surface **23T** of the third insulation film **23**.

[0071] The relay electrode RE and pixel electrode PE, which cover the top surface **23T** of the third insulation film **23**, are further covered with the fourth insulation film **24**, and the relay electrode RE that is formed in the first contact hole CH1 is covered, up to its substantially central part, with the fourth insulation film **24**.

[0072] In this comparative example, there is substantially no passage for releasing moisture, which is absorbed in the third insulation film **23**, to the outside. Specifically, since the common electrode CE is covered with the fourth insulation film **24**, there is substantially no passage for releasing vapor which has entered the common electrode CE. In addition, since the relay electrode RE, which is formed on the top surface **23T** of the third insulation film **23**, is covered with the fourth insulation film **24**, there is substantially no passage for releasing vapor which has entered the relay electrode RE. In the meantime, the relay electrode RE, which is formed in the first contact hole CH1, is exposed from the fourth insulation film **24** in the second contact hole CH2.

[0073] However, the position of the stacked body of the relay electrode RE and pixel electrode PE, which is formed in the second contact hole CH2, is spaced apart from the third insulation film **23**. In addition, a horizontal path length in the relay electrode RE, which reaches the stacked body of the relay electrode RE and pixel electrode PE from the third insulation film **23**, is much longer than a path length in the thickness direction of the stacked body as in the embodiment. Thus, the horizontal path in the relay electrode RE hardly functions as a vapor release passage.

[0074] Hence, there is little vapor release passage from the third insulation film **23**, and vapor stays between the third insulation film **23** and the fourth insulation film **24** overlapping the third insulation film **23**, between the relay electrode RE and fourth insulation film **24**, or between the common electrode CE and the fourth insulation film **24**, and bubbles or lifting of the fourth insulation film **24** occurs. Consequently, there is concern that the yield decreases.

[0075] As described above, moisture of the third insulation film **23** tends to be confined in the structure in which the relay electrode RE and common electrode CE are formed on the third insulation film **23** which is formed of the organic material that tends to absorb moisture, the relay electrode RE and common electrode CE are covered with the fourth insulation film **24** that is formed of a relatively dense inorganic material, and this fourth insulation film **24** serves as an interlayer insulation film between the pixel electrode PE and the common electrode CE. Therefore, it is very effective to form a release passage for releasing moisture from the third insula-

tion film **23** to the outside. In the present embodiment, the stacked body of the relay electrode RE and pixel electrode PE, which are relatively rough films, is formed on the top surface **23T** of the third insulation film **23**, and a release passage for releasing moisture from the third insulation film **23** is formed. Thereby, lifting of the fourth insulation film **24** can be suppressed.

[0076] The present embodiment is not limited to the above-described examples. For example, a first substrate includes an insulative substrate, an organic insulation film which is formed on the insulative substrate, a first electrode which is formed on the organic insulation film, an inorganic insulation film which is disposed on the first electrode and includes a contact hole penetrating to the first electrode, and a second electrode which is formed on the inorganic insulation film and is electrically connected to the first electrode via the contact hole. When the first electrode and second electrode of the first insulative substrate have a rougher film structure than the inorganic insulation film, for example, when the first electrode and second electrode are transparent electrodes of, e.g. ITO or IZO, moisture in the organic insulation film is released through the contact hole which connects the transparent electrodes. Therefore, not only in the structure of the pixel part, but also in the peripheral part of the active area, the same advantageous effects as described above can be obtained in the case of the structure wherein the first transparent electrode, inorganic insulation film and second transparent electrode are successively stacked in the named order on the organic insulation film, and the first transparent electrode and second transparent electrode are connected via the contact hole of the inorganic insulation film.

[0077] As has been described above, according to the present embodiment, there can be provided a liquid crystal display device which can suppress a decrease in manufacturing yield and a method of manufacturing the liquid crystal display device.

[0078] While certain embodiments have been described, these embodiments have been presented by way of example only, and are not intended to limit the scope of the inventions. Indeed, the novel embodiments described herein may be embodied in a variety of other forms; furthermore, various omissions, substitutions and changes in the form of the embodiments described herein may be made without departing from the spirit of the inventions. The accompanying claims and their equivalents are intended to cover such forms or modifications as would fall within the scope and spirit of the inventions.

What is claimed is:

1. (canceled)

2. A liquid crystal display device comprising:

a first substrate including an insulative substrate; a semiconductor layer formed above the insulative substrate; a first interlayer insulation film disposed above the insulative substrate and the semiconductor layer and includ-

ing a first contact hole penetrating to the semiconductor layer; an island-shaped drain electrode formed on the first interlayer insulation film, and which extends to the first contact hole and is electrically connected to the semiconductor layer; a second interlayer insulation film disposed above the first interlayer insulation film and the drain electrode and including a second contact hole penetrating to the drain electrode at a position different from a position of the first contact hole; an island-shaped relay electrode located on the second interlayer insulation film, formed of a first transparent electrically conductive material, and which extends to the second contact hole and is electrically connected to the drain electrode; a third interlayer insulation film disposed above the second interlayer insulation film and the relay electrode and including a third contact hole penetrating to the relay electrode at a position different from positions of the first contact hole and the second contact hole; a pixel electrode located on the third interlayer insulation film, formed of a second transparent electrically conductive material, and which extends to the third contact hole and is stacked on the relay electrode; and an alignment film covering the pixel electrode and the third interlayer insulation film;

a second substrate disposed to be opposed to the first substrate; and

a liquid crystal layer held between the first substrate and the second substrate.

3. The liquid crystal display device of claim 2, wherein a thickness of a lamination of the relay electrode and the pixel electrode in the third contact hold is substantially same as a thickness of the third interlayer insulation film.

4. The liquid crystal display device of claim 2, wherein a lamination of the relay electrode and the pixel electrode in the third contact hold has a rougher film structure than the third interlayer insulation film.

5. The liquid crystal display device of claim 2, wherein the second interlayer insulation film, the relay electrode, the pixel electrode, and the alignment film are stacked in that order in the third contact hole.

6. The liquid crystal display device of claim 2, wherein the second interlayer insulation film is formed of a transparent organic material.

7. The liquid crystal display device of claim 2, wherein the third interlayer insulation film is formed of an inorganic material including silicon (Si).

8. The liquid crystal display device of claim 2, wherein the first transparent electrically conductive material is same as the second transparent electrically conductive material.

9. The liquid crystal display device of claim 2, wherein the first transparent electrically conductive material and the second transparent electrically conductive material are indium tin oxide.

* * * * *

专利名称(译)	液晶显示装置及其制造方法		
公开(公告)号	US20150055075A1	公开(公告)日	2015-02-26
申请号	US14/505292	申请日	2014-10-02
[标]申请(专利权)人(译)	株式会社日本显示器		
申请(专利权)人(译)	日本展示INC.		
当前申请(专利权)人(译)	日本展示INC.		
[标]发明人	NAOE YASUO HARADA KAZUYUKI		
发明人	NAOE, YASUO HARADA, KAZUYUKI		
IPC分类号	G02F1/1343 G02F1/1362 G02F1/1333		
CPC分类号	G02F1/134336 G02F1/13439 G02F2001/134372 G02F1/136227 G02F1/133345 G02F1/133528 G02F1/13378 G02F1/1339 G02F1/1341 G02F1/136286 G02F2001/133357 H01L27/1248		
优先权	2011131271 2011-06-13 JP		
其他公开文献	US9395587		
外部链接	Espacenet USPTO		

摘要(译)

根据一个实施例，一种液晶显示装置包括：第一基板，包括：有机绝缘膜，包括穿透到开关元件的第一接触孔；岛状中继电极和公共电极，形成在有机绝缘膜上；层间绝缘膜，包括位于与第一接触孔的位置不同的位置处的第二接触孔，像素电极，其形成在层间绝缘膜上并包括与公共电极相对的狭缝，以及覆盖该层的绝缘膜像素电极和层间绝缘膜。

