



US008773617B2

(12) **United States Patent**
Choi et al.

(10) **Patent No.:** **US 8,773,617 B2**
(45) **Date of Patent:** ***Jul. 8, 2014**

(54) **LIQUID CRYSTAL DISPLAY AND LED MODULE THEREOF**

(56) **References Cited**

(75) Inventors: **Suk Ju Choi**, Jeonju-si (KR); **Kun Ho Cho**, Suwon-si (KR); **Yong Hun Kwon**, Anyang-si (KR); **Kye Hoon Lee**, Suwon-si (KR); **Gil Tae Hur**, Suwon-si (KR); **Young Min Lee**, Bucheon-si (KR)

U.S. PATENT DOCUMENTS

7,284,894	B2	10/2007	Mok et al.	
7,894,016	B2	2/2011	Hamada	
8,052,321	B2*	11/2011	Kim	362/631
8,164,704	B2	4/2012	Kim et al.	
8,358,387	B2	1/2013	Choi et al.	
2009/0128732	A1	5/2009	Hamada	

(73) Assignee: **Samsung Electronics Co., Ltd.**, Suwon-si (KR)

(Continued)

(*) Notice: Subject to any disclaimer, the term of this patent is extended or adjusted under 35 U.S.C. 154(b) by 175 days.

FOREIGN PATENT DOCUMENTS

EP	1975653	A1	10/2008
EP	2 431 793	A2	3/2012
EP	2 573 616	A2	3/2013
WO	2007/129419	A1	11/2007

This patent is subject to a terminal disclaimer.

OTHER PUBLICATIONS

Non-Final Rejection dated Sep. 14, 2012, issued by the United States Patent and Trademark Office in U.S. Appl. No. 13/551,840.

(21) Appl. No.: **13/418,925**

(Continued)

(22) Filed: **Mar. 13, 2012**

Primary Examiner — Thoi Duong

(65) **Prior Publication Data**

(74) *Attorney, Agent, or Firm* — Sughrue Mion, PLLC

US 2012/0236231 A1 Sep. 20, 2012

(30) **Foreign Application Priority Data**

(57) **ABSTRACT**

Mar. 16, 2011 (KR) 10-2011-0023402

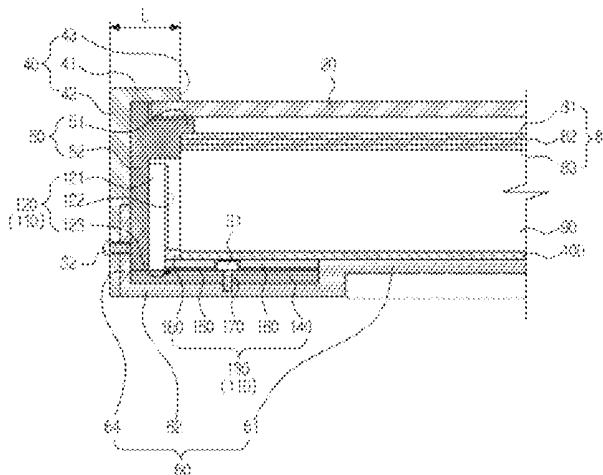
A liquid crystal display (LCD) includes a cover assembly; a liquid crystal panel; a light guide plate configured to guide light to the liquid crystal panel; a printed circuit board (PCB) to which the light guide plate is mounted; and a light emitting diode (LED) package which is mounted on the PCB and emits light to a lateral side of the light guide plate. The PCB includes a base substrate; a connecting hole which is formed in the base substrate to couple the base substrate to the cover assembly with a connecting member; an insulating layer which is coated on the base substrate while avoiding a head part of the connecting member; and a spacer tape which is provided on an upper side of the insulating layer so that the light guide plate is evenly mounted on the PCB.

(51) **Int. Cl.**
G02F 1/1335 (2006.01)

(52) **U.S. Cl.**
USPC **349/65**; 349/150; 349/58; 362/97.2; 362/612; 362/631

(58) **Field of Classification Search**
USPC 349/150, 65, 58, 67, 138, 122; 362/97.2, 97.3, 612, 631-634
See application file for complete search history.

24 Claims, 10 Drawing Sheets



(56)

References Cited

U.S. PATENT DOCUMENTS

2010/0110334 A1 5/2010 Oki et al.
2010/0123847 A1 5/2010 Jeong et al.
2010/0123851 A1 5/2010 Mo et al.
2010/0149834 A1 6/2010 Kim et al.

OTHER PUBLICATIONS

Communication dated Feb. 12, 2013, issued by the Korean Intellectual Property Office in counterpart Korean Application No. 10-2011-0023402.

Communication dated Mar. 1, 2013, issued by the United States Patent and Trademark Office in counterpart U.S. Appl. No. 13/718,581.

Communication issued Jun. 19, 2012 by the European Patent Office in counterpart European Application No. 12158632.5.

Communication dated Feb. 12, 2013 issued by the Korean Intellectual Property Office in counterpart Korean Application No. 10-2011-0023402.

Communication dated Jun. 18, 2013 issued by the European Patent Office in counterpart European Patent Application No. 13165625.8.

Office Action dated Jun. 26, 2013 issued by the USPTO in U.S. Appl. No. 13/718,581.

* cited by examiner

FIG. 1

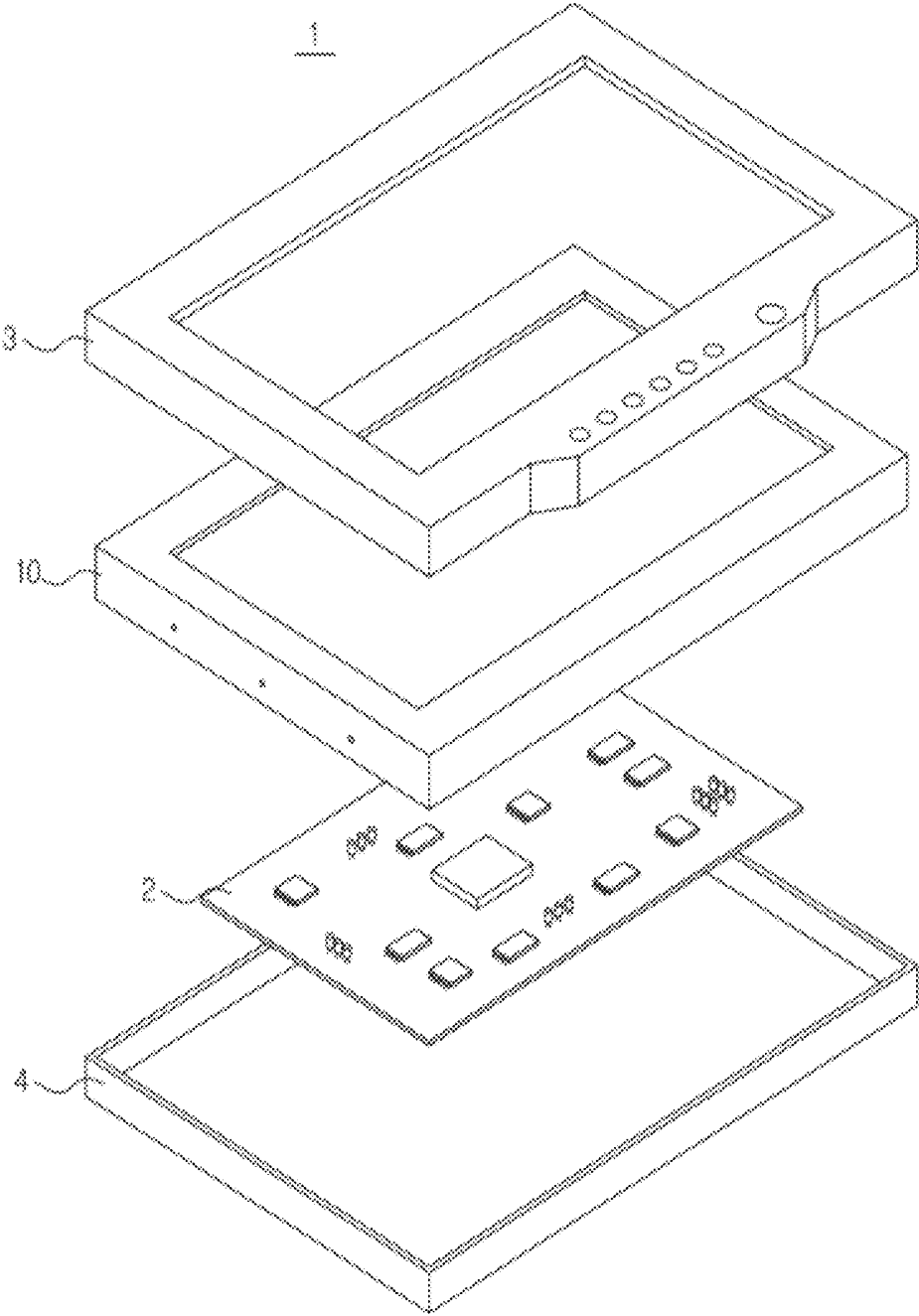


FIG. 2

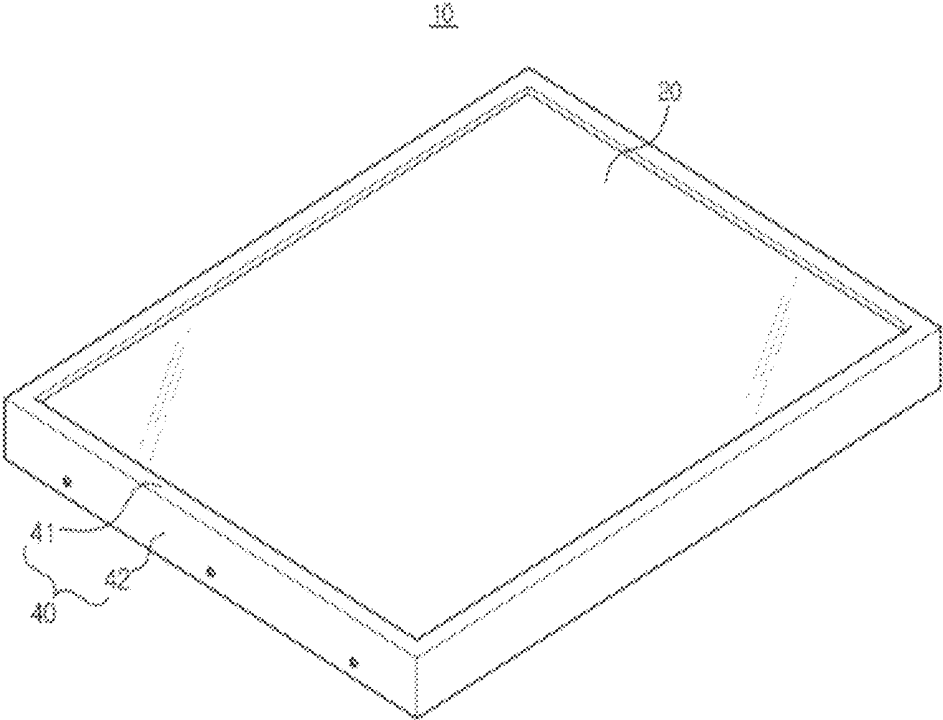


FIG. 3

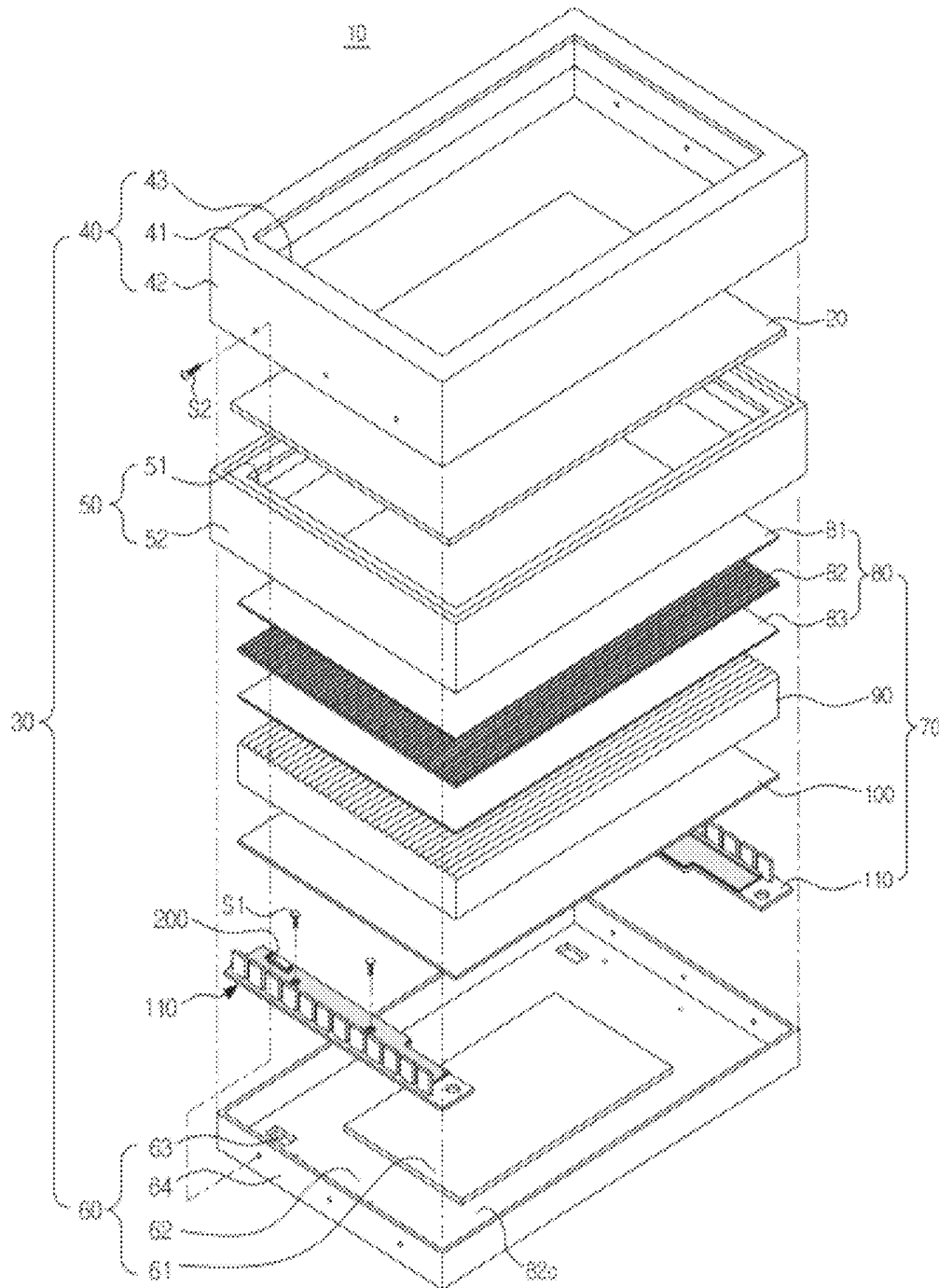


FIG. 5

110

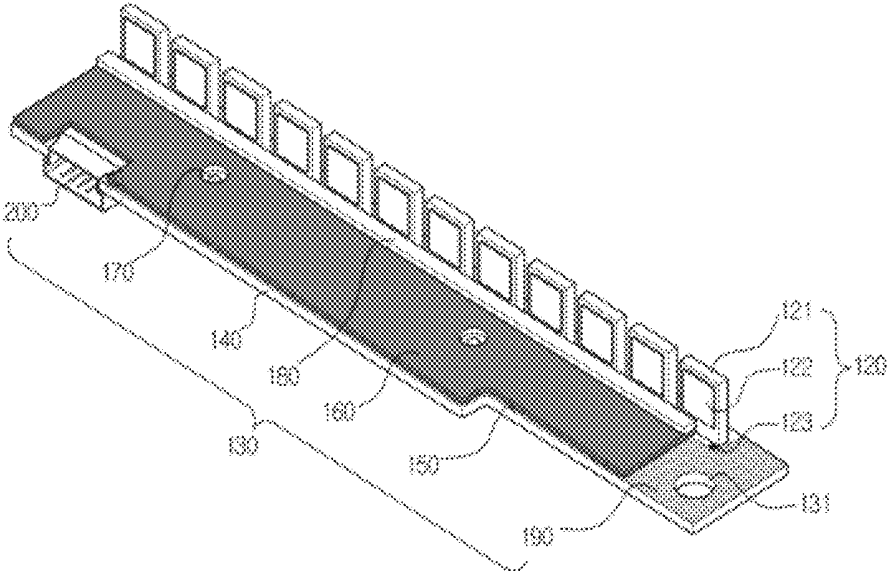


FIG. 6

110

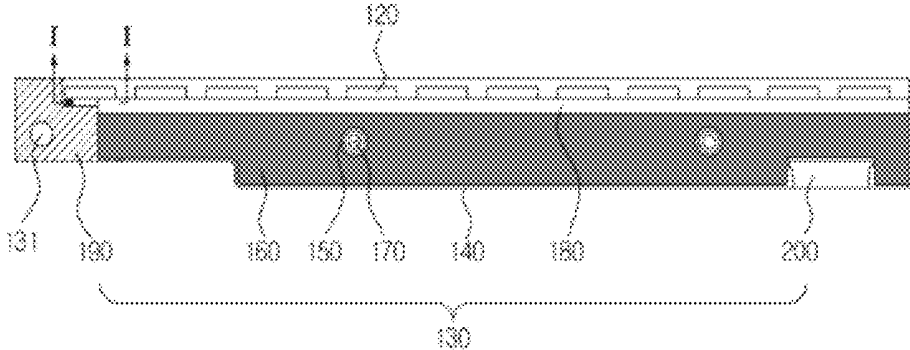


FIG. 7

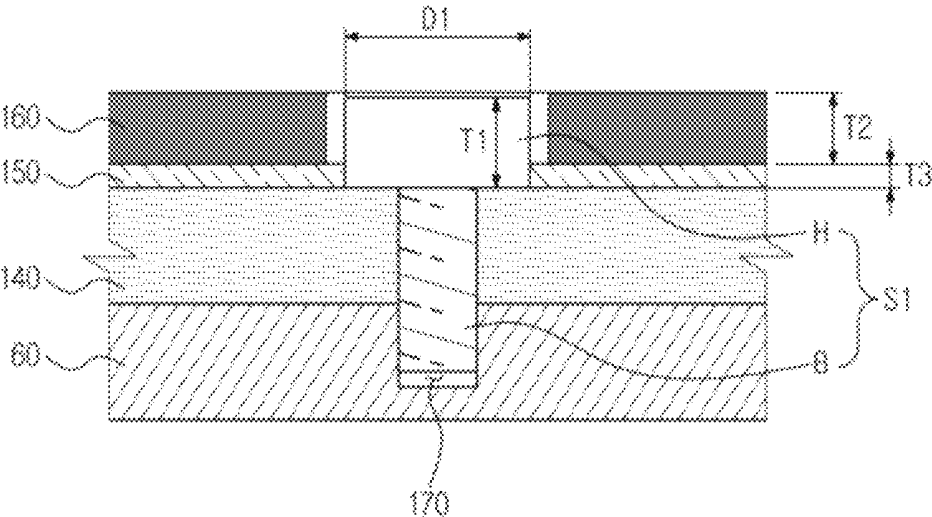


FIG. 8

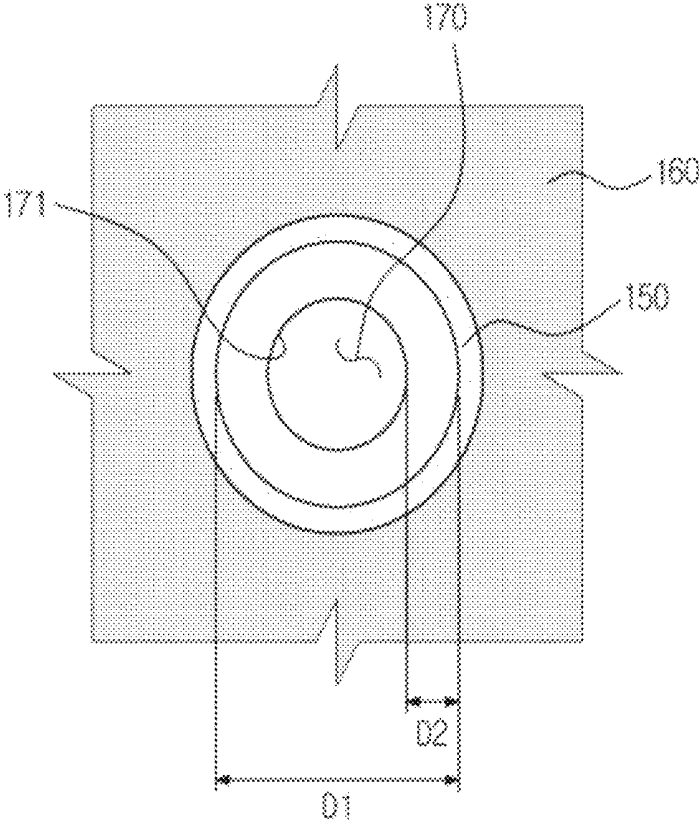


FIG. 9

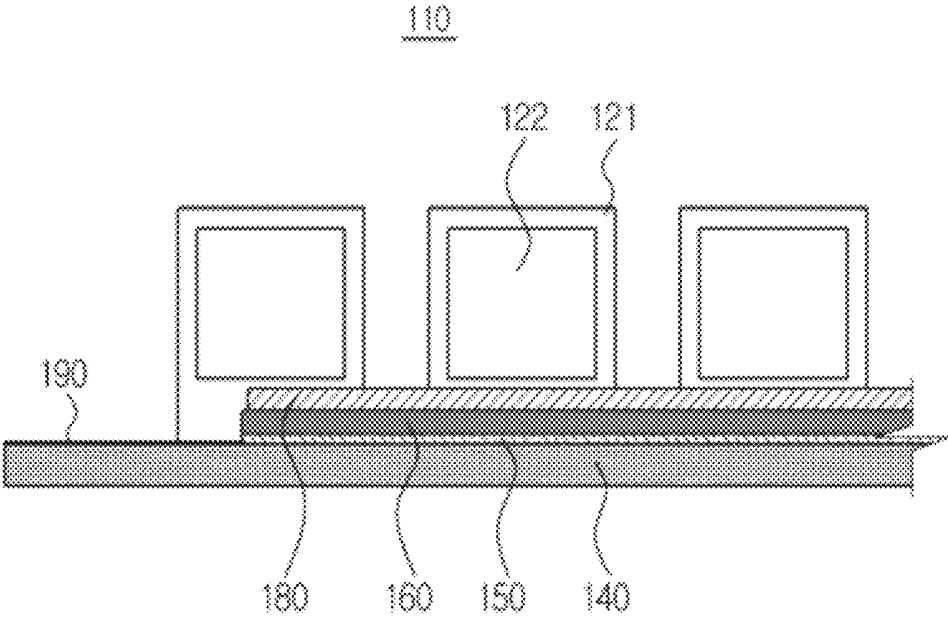
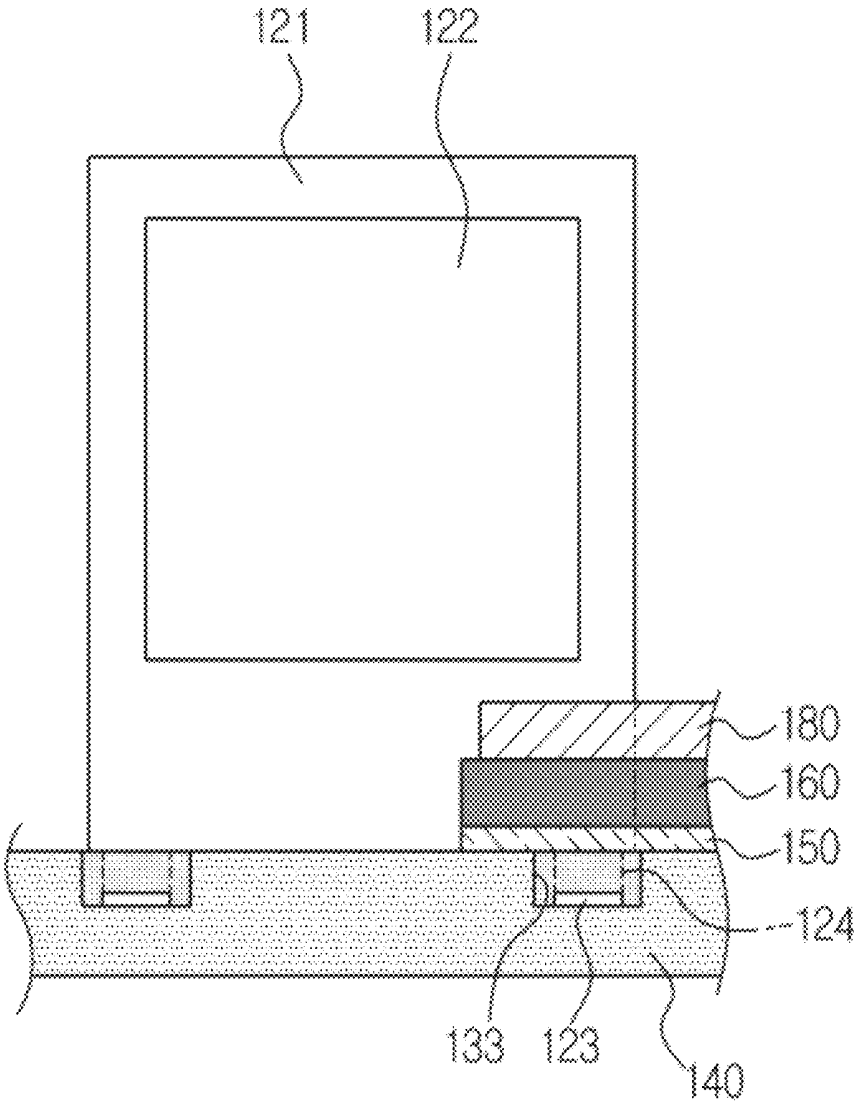


FIG. 10



LIQUID CRYSTAL DISPLAY AND LED MODULE THEREOF

CROSS-REFERENCE TO RELATED APPLICATION

This application claims priority from Korean Patent Application No. 10-2011-0023402, filed on Mar. 16, 2011 in the Korean Intellectual Property Office, the disclosure of which is incorporated herein by reference in its entirety.

BACKGROUND

1. Field

Apparatuses and methods consistent with exemplary embodiments relate to a liquid crystal display (LCD), and more particularly, to an LCD including a light emitting diode (LED) module having an improved structure.

2. Description of the Related Art

An LCD is an electronic device configured to change electrical information generated by various devices into the visual information and to provide the visual information. The LCD requires a backlight due to the lack of the light emitting ability, but is widely used as a flat panel display because of low power consumption and superior portability.

The LCD uses a backlight unit as a light source for a liquid crystal that represents an image. The backlight unit is provided in variety of sizes and configurations, but in general, includes a lamp serving as a light source, an optical subsidiary member including a reflection sheet, a light guide plate, a diffusion sheet, a prism sheet and a protective sheet, and a mold frame serving as a support structure.

The light source is implemented using a cold cathode fluorescent lamp (CCFL), an external electrode fluorescent lamp (EEFL), an LED, etc.

In particular, a narrow bezel display having an LED as a light source has gathered a large amount of interest due to its differentiated design.

SUMMARY

Exemplary embodiments provide a structure of an LED module capable of implementing a super narrow bezel.

In accordance with an aspect of an exemplary embodiment, there is provided an LCD including a cover assembly, a liquid crystal panel, a light guide plate, a printed circuit board (PCB), and an LED. The light guide plate is configured to guide light to the liquid crystal panel. The light guide plate is mounted to the PCB. The LED package is mounted on the PCB and emits light to a lateral side of the light guide plate. The PCB includes a base substrate, a connecting hole, an insulating layer and a spacer taper. The connecting hole is formed in the base substrate to couple the base substrate to the cover assembly through a connecting member. The insulating layer is coated on the base substrate while avoiding a head part of the connecting member. The spacer tape is provided on an upper side of the insulating layer such that the light guide plate is evenly mounted on the PCB.

The connecting member may be coupled downward to the PCB from an upper side to a lower side of the PCB.

The cover assembly may include a top sash, a middle mold, and a bottom sash, wherein the PCB is coupled to the bottom sash.

The LED package may be provided in a side view type LED package that is mounted on one side of an upper surface of the PCB to emit light toward an opposite side of the upper surface of the PCB.

The LED package may include a lead terminal configured to receive power, and the PCB further comprises a lead terminal accommodating groove configured to accommodate the lead terminal.

The insulating layer may include photo solder resist (PSR).

The spacer tape may have a thickness substantially corresponding to a thickness of the head part of the connecting member.

The spacer taper may be provided on the upper side of the insulating layer except for an area corresponding to one end portion of the PCB.

An upper side of the insulating layer where the spacer tape is not provided may be coated with a black silk pattern.

The LCD may further include a connector protruding from a lower surface of the PCB to connect the PCB to an external power source.

The connector may be disposed at an edge of the PCB.

The LCD further may include a white tape provided on an upper side of the spacer tape while being disposed between the LED package and the light guide plate.

In accordance with an aspect of another exemplary embodiment, there is provided an LCD including a liquid crystal panel, a top sash, a light guide plate, an LED module, a bottom sash and a connecting member. The top sash includes a bezel configured to cover a rim of the liquid crystal panel. The light guide plate is configured to guide light to the liquid crystal panel. The LED module emits light to a lateral side of the light guide plate and supports the light guide plate such that the light guide plate is disposed at a position corresponding to an end portion of the bezel. The bottom sash is coupled to a lower side of the LED module to support the LED module. The connecting member is secured downward to couple the LED module to the bottom sash.

The LED module may further include a PCB and an LED package. The light guide plate may be mounted on the PCB. The PCB is coupled to the bottom sash. The LED package may be mounted on one side of an upper surface of the PCB to emit light toward an opposite side of the upper surface of the PCB.

The PCB may include a PSR coated for insulation. The PSR is coated while avoiding a head part of the connecting member.

A spacer tape may have a thickness substantially identical to a thickness of the head part of the connecting member is provided on the PCB.

In accordance with an aspect of another exemplary embodiment, there is provided an LED module including a PCB and an LED package. The LED package is provided in a side view type LED package that is mounted on one side of an upper surface of the PCB to emit light toward an opposite side of the upper surface of the PCB. The PCB includes a base substrate, a connecting hole, an insulating layer and a spacer tape. The connecting hole is formed through an upper surface and a lower surface of the base substrate to enable a connecting member to be coupled to the base substrate. The insulating layer is coated on the base substrate while being spaced apart outward from a circumference of the connecting hole by a predetermined distance. The spacer tape is provided on an upper side of the insulating layer to form a difference in steps around the connecting hole.

The LED module may further includes a lead terminal and a lead terminal accommodating groove. The lead terminal is formed on the LCD package to provide the LCD package with power. The lead terminal accommodating groove is formed in the PCB to accommodate the lead terminal.

The LED module may further includes a connector protruding from a lower surface of the PCB to connect the PCB to an external power source.

The LED module may further includes a white tape provided on an upper side of the spacer tape while being adjacent to the LED package.

BRIEF DESCRIPTION OF THE DRAWINGS

The above and/or other aspects will become apparent and more readily appreciated from the following description of the embodiments, taken in conjunction with the accompanying drawings of which:

FIG. 1 is an exploded perspective view illustrating an LCD according to an exemplary embodiment;

FIG. 2 is a perspective view illustrating a liquid crystal module of the LCD of FIG. 1;

FIG. 3 is an exploded perspective view of the liquid crystal module of FIG. 2;

FIG. 4 is a cross-sectional view of the liquid crystal module of FIG. 2;

FIG. 5 is a perspective view of the LED module of FIG. 3;

FIG. 6 is a top view of the LED module of FIG. 3;

FIG. 7 is a cross-sectional view enlarging a portion of the LED module of FIG. 3;

FIG. 8 is a top view enlarging a portion of the LED module of FIG. 3;

FIG. 9 is a side view of the LED module of FIG. 3; and

FIG. 10 is a cross-sectional view taken along line I-I of the LED module of FIG. 6.

DETAILED DESCRIPTION

Certain exemplary embodiments are described in detail below, with reference to the accompanying drawings.

In the following description, like drawing reference numerals are used for the like elements, even in different drawings. The matters defined in the description, such as detailed construction and elements, are provided to assist in a comprehensive understanding of exemplary embodiments. However, exemplary embodiments can be carried out without those specifically defined matters. Also, well-known functions or constructions are not described in detail since that would obscure the invention with unnecessary detail.

FIG. 1 is an exploded perspective view illustrating an LCD according to an exemplary embodiment. FIG. 2 is a perspective view illustrating a liquid crystal module of the LCD of FIG. 1. FIG. 3 is an exploded perspective view of the liquid crystal module of FIG. 2. FIG. 4 is a cross-sectional view of the liquid crystal module of FIG. 2.

Referring to FIGS. 1 to 4, an LCD 1 includes a front cover 3, a liquid crystal module 10, a main substrate 2, and a rear cover 4. The main substrate 2 operates the liquid crystal module 10 by applying signals to the liquid crystal module 10. The front cover 3 and the rear cover 4 are disposed on a front side and a rear side of the liquid crystal module 10, respectively, to cover and support the liquid crystal module 10 and the main substrate 2.

The liquid crystal module 10 includes a liquid crystal panel 20, a backlight unit 70, and a cover assembly 30 that covers and supports the liquid crystal panel 20 and the backlight unit 70.

The liquid crystal panel 20 corresponds to a display area of the liquid crystal module 10. Although not shown in the drawings, the liquid crystal panel 20 includes two thin glass substrates, liquid crystal molecules interposed between the

two thin glass substrates, and a transparent electrode configured to apply a voltage to the liquid crystal molecules.

The backlight unit 70 is disposed on a lower side of the liquid crystal panel 20 to emit light to the liquid crystal panel 20, and includes an LED module 110, a reflection sheet 100, a light guide plate 90, and an optical sheet 80. It should be noted that the description of the components is illustrative only and is provided with reference to the drawings. Thus, the components which are described as upper or lower may be disposed on the front side of the display or on the rear side of the display, respectively, or vice versa.

The light guide plate 90 is provided in the form of a hexahedron, and includes acryl-based resin.

Various patterns are formed on a bottom surface of the light guide plate 90. Such a pattern frustrates the total reflection of light introduced to a lateral side of the light guide plate 90, so that the light is uniformly emitted through an upper surface of the light guide plate 90.

The reflection sheet 100 is provided on a lower side of the light guide plate 90 to reflect light, which travels downward after going through total reflection in the light guide plate 90, toward the light guide plate 90.

The optical sheet 80 includes a protective sheet 81, a prism sheet 82, and a diffusion sheet 83.

The diffusion sheet 83 is provided on an upper side of the light guide plate 90 such that light emitted through the upper surface of the light guide plate 90 is diffused and provided to the liquid crystal panel 20. The diffusion sheet 83 may be provided with a coating layer (not shown) having beads that diffuse light.

The prism sheet 82 is configured to collect light, which is diffused through the diffusion sheet 83, in a direction perpendicular to a display surface of the liquid crystal panel 20.

The protective sheet 81 is provided on an upper side of the prism sheet 82 to protect the prism sheet 82 susceptible to scratching due to dust.

The LED module 110 includes a PCB 130 and an LED package 120 mounted on the PCB 130, and emits light to the light guide plate 90. According to the current exemplary embodiment, a pair of LED modules 110 is disposed on a left side and a right side of the liquid crystal module 10 in symmetry to each other, but the configuration of the LED module 110 is not limited thereto. Alternatively, a pair of LED modules 110 may be disposed on an upper side and a lower side of the liquid crystal module 10. Alternatively, the LCD 1 may include only one LED module 110 provided on a lateral side of the liquid crystal module 10. The configuration of the LED module 110 is described in detail below.

The cover assembly 30 is configured to cover and support the liquid crystal panel 20 and the backlight unit 70, and includes a top sash 40, a middle mold 50, and a bottom sash 60.

The top sash 40 includes a bezel 41 forming a rim of the liquid crystal module 10, and a top lateral side wall 42. An end portion 43 of the bezel 41 is disposed perpendicular to a lateral side of the light guide plate 90 or a lateral side of the optical sheet 80.

The bezel 41 may be a super narrow bezel having a length (L) less than about 15 mm.

The bottom sash 60 includes a bottom part 61 to support the reflection sheet 100, the light guide plate 90 and the optical sheet 80, a substrate accommodating part 62 to accommodate the LED module 110, a bottom-lateral side wall 64, and a connector passing part 63 allowing a connector to pass there-through.

The substrate accommodating part **62** is formed by recessing both end portions of the bottom part **61** to accommodate the LED module **110**.

A connector **200** provided on a lower side of the LED module **110** is exposed to the outside of the liquid crystal module **10** by passing through the connector passing part **63**.

The middle mold **50** includes a middle-lateral side wall **52** and a support part **51**.

The middle-lateral side wall **52** has an upper side, which comes into close contact with the bezel **41** of the top sash **40**, and a lower side, which comes into close contact with the PCB **130** of the LED module **110**.

The support part **51** is disposed between the liquid crystal panel **20** and the optical sheet **80** such that the liquid crystal panel **20** is spaced apart from the optical sheet **80** by a predetermined distance. The support part **51** has an upper side, which comes into close contact with the liquid crystal panel **20**, and a lower side, which comes into close contact with the optical sheet **80**, to stably support the liquid crystal panel **20** and the optical sheet **80**.

Such a configuration of the cover assembly **30** is assembled by coupling the top lateral side wall **42** of the top sash **40** to the bottom lateral side wall **64** of the bottom sash **60** with a second connecting member (S2).

FIG. 5 is a perspective view of the LED module of FIG. 3. FIG. 6 is a top view of the LED module of FIG. 3. FIG. 7 is a cross-sectional view enlarging a portion of the LED module of FIG. 3. FIG. 8 is a top view enlarging a portion of the LED module of FIG. 3. FIG. 9 is a side view of the LED module of FIG. 3. FIG. 10 is a cross-sectional view taken along line I-I of the LED module of FIG. 6.

The configuration of the LED module **110** is described below with reference to FIGS. 1 to 10.

The LED module **110** includes the PCB **130** to which the light guide plate **90** is mounted, and the LED package **120** mounted on an upper surface of the PCB **130**.

In order to implement a super narrow bezel, the LED package **120** includes a side view type LED packages in which a light-emitting surface **122** is formed on a lateral side of a package body **121** of the LED package **120**.

The liquid crystal module **10** uses a plurality of LED packages **120** that are mounted in line on one side of the upper surface of the PCB **130** to emit light to an opposite side of the upper surface of the PCB **130**.

Referring to FIG. 10, a lead terminal **123** is formed on a leg part **124** extending downward from the package body **121** of the LED package **120** such that power is provided to the LED package **120**. In addition, a lead terminal accommodating groove **133** is formed in the PCB **130** to accommodate the lead terminal **123** such that the lead terminal **123** is prevented from being exposed to the outside, thereby preventing the LED package **120** from causing a short circuit due to foreign substances having electric conductivity.

The PCB **130** includes a base substrate **140**, an insulating layer **150** coated on the base substrate **140**, a spacer tape **160** provided on an upper side of the insulating layer **150**, a white tape **180** provided on an upper side of the spacer tape **160**, a connecting hole **170** allowing the base substrate **140** to be coupled to the substrate accommodating part **62** of the bottom sash **60**, and the connector **200**.

The base substrate **140** is formed using metal such as aluminum. Accordingly, heat generated from the LED package **120** is rapidly transmitted through the base substrate **140** and heat exchange is generated with the outside or outdoor air. In addition, although not shown in the drawings, the base substrate **140** is patterned with a wire that is connected to the

lead terminal **123** of the LED package **120** such that the driving signals are transmitted to each of the LED packages **120**.

A first connecting member (S1) is inserted downward into the connecting hole **170** such that the base substrate **140** is coupled to the substrate accommodating part **62** of the bottom sash **60**.

The first connecting member (S1) includes a body part (B) having a screw thread and a head part (H) provided on an upper side of the body part (B). Since the first connecting member (S1) is inserted downward into the connecting hole **170**, the head part (H) is provided inside the liquid crystal module **10** without being exposed to the outside of the liquid crystal module **10**.

The base substrate **140** is coated with the insulating layer **150** for electric insulation. The insulating layer **150** is formed using a white PSR.

The insulating layer **150** is coated while avoiding the head part (H) of the first connecting member (S1).

Referring to FIGS. 7 and 8, the insulating layer **150** is coated outside of a circular area having a diameter identical to that of a diameter (D1) of the head part (H). That is, the insulating layer **150** is coated on an area of the base substrate **140** while being spaced apart from a circumference **171** of the connecting hole **170** by a predetermined distance (D2). Accordingly, the head part (H) of the first connecting member (S1) comes into close contact with the base substrate **140**.

Such a partial coating reduces a difference in steps caused by the head part (H) of the connecting member (S1) without an additional process.

Referring to FIG. 7, the spacer tape **160** is provided on the upper side of the insulating layer **150**. The spacer tape **160** has a thickness (T2) substantially identical to a thickness (T1) of the head part (H) of the first connecting member (S1). Since a thickness (T3) of the insulating layer **150** is substantially less than the thickness (T2) of the spacer tape **160**, the thickness (T1) of the head part (H) is regarded to be substantially identical to the thickness (T2) of the spacer tape **160**.

The installation of the spacer tape **160** forms a difference in steps, which corresponds to the thickness (T1) of the head part (H) of the first connecting member (S1), around the connecting hole **170**.

Accordingly, when the first connecting member (S1) is fastened to the connecting hole **170**, the light guide plate **90** and the reflection sheet **100** are prevented from being slanted due to protruding of the head part (H) while maintaining a flat state.

In addition, the connector **200** is provided to protrude on a lower side of the PCB **130**, thereby preventing the light guide plate **90** from being slantingly mounted on the PCB **130** due to the connector **200**. Further, the connector **200** is disposed at an edge of the PCB **130** to improve the assembling efficiency of the LED module **110**.

An end portion **190** of the PCB **130** has a hole **131** to which an additional connecting member is coupled such that the coupling force between the PCB **130** and the bottom sash **60** is improved. The forming of the hole **131** reduces an area of the end portion **190** of the PCB **130** and therefore the end portion **190** of the PCB **130** having the hole **131** is too small to have the spacer tape **160** attached to the PCB **130**, and as a result the spacer tape **160** may be easily separated. Accordingly, the spacer tape **160** is not provided on the end portion **190** of the PCB **130** having the hole **131**.

However, in order to prevent the liquid crystal panel **20** from having a light bouncing which is caused when the white PSR of the insulating layer **150** is exposed due to nonexistence of the spacer tape **160** on the end portion **190** of the PCB

130, a black silk pattern is coated on the end portion **190** of the PCB **130** which does not accompany the spacer tape **160**.

In general, the coating of the silk pattern is performed to pattern a predetermined symbol on an upper side of the insulating layer **150**. Accordingly, by performing such a general silk patterning on the end portion **190** which does not have the spacer tape **160**, the light bouncing is prevented and a bright portion is reduced without an additional process.

A white tape **180** is provided on the upper side of the spacer tape **160** while being disposed between the LED package **120** and the light guide plate **90** to allow light emitted from the LED package **120** to be effectively introduced to the light guide plate **90**. The white tape **180** improves 10% or more of light introduction efficiency.

As described above, a design differentiation is provided by implementing a super narrow bezel. In addition, this exemplary embodiment of a LCD and an LED module is implemented by using only a conventional process without an additional process, thereby enabling mass production.

The foregoing exemplary embodiments and advantages are merely exemplary and are not to be construed as limiting. The present teaching can be readily applied to other types of apparatuses. Also, the description of the exemplary embodiments is intended to be illustrative, and not to limit the scope of the claims, and many alternatives, modifications, and variations will be apparent to those skilled in the art.

What is claimed is:

1. A liquid crystal display (LCD) comprising:
 - a cover assembly;
 - a liquid crystal panel;
 - a light guide plate configured to guide light to the liquid crystal panel;
 - a printed circuit board (PCB) to which the light guide plate is mounted;
 - a light emitting diode (LED) package which is mounted on the PCB and emits light to a lateral side of the light guide plate; and
 - a connecting member,
 wherein the PCB comprises:
 - a base substrate having a connecting hole, the connecting member extending through the connecting hole to couple the base substrate to the cover assembly;
 - an insulating layer which is coated on an upper surface of the base substrate while avoiding a head part of the connecting member disposed on the upper surface of the base substrate; and
 - a spacer tape which is provided on an upper side of the insulating layer so that the light guide plate is evenly mounted on the PCB.
2. The LCD of claim 1, wherein the connecting member is coupled downward to the PCB from an upper side to a lower side of the PCB.
3. The LCD of claim 1, wherein the cover assembly comprises:
 - a top sash,
 - a middle mold, and
 - a bottom sash,
 wherein the PCB is coupled to the bottom sash.
4. The LCD of claim 1, wherein the LED package comprises a side view LED package that is mounted on one side of an upper surface of the PCB to emit light toward an opposite side of the upper surface of the PCB.
5. The LCD of claim 1, wherein the LED package comprises a lead terminal configured to receive power, and the PCB further comprises a lead terminal accommodating groove configured to accommodate the lead terminal.

6. The LCD of claim 1, wherein the insulating layer comprises photo solder resist.

7. The LCD of claim 1, wherein the spacer tape has a thickness substantially equal to a thickness of the head part of the connecting member.

8. The LCD of claim 1, wherein the spacer tape is provided on the upper side of the insulating layer except for an area corresponding to one of end portions of the PCB.

9. The LCD of claim 8, wherein the upper side of the insulating layer, where the spacer tape is not provided, is coated with a black silk pattern.

10. The LCD of claim 1, wherein the PCB further comprises a connector protruding from a lower surface of the PCB to connect the PCB to an external power source.

11. The LCD of claim 10, wherein the connector is disposed at an edge of the PCB.

12. The LCD of claim 1, wherein a white tape is provided on an upper side of the spacer tape while being disposed between the LED package and the light guide plate.

13. A liquid crystal display (LCD) comprising:

- a liquid crystal panel;
- a top sash comprising a bezel configured to cover a rim of the liquid crystal panel;
- a light guide plate configured to guide light to the liquid crystal panel;
- a light emitting diode (LED) module which emits light to a lateral side surface of the light guide plate and supports the light guide plate so that the lateral side surface of the light guide plate is disposed at a position substantially coinciding with a position of an end edge of the bezel, as seen in a direction from the bezel to the light guide plate;
- a bottom sash coupled to a lower side of the LED module to support the LED module; and
- a connecting member that couples the LED module to the bottom sash.

14. The LCD of claim 13, wherein the LED module comprises:

- a printed circuit board (PCB) to which the light guide plate is mounted and coupled to the bottom sash; and
- an LED package mounted on one side of an upper surface of the PCB to emit light toward an opposite side of the upper surface of the PCB.

15. The LCD of claim 14, wherein the PCB comprises a photo solder resist (PSR) coated for insulation, and the PSR is coated while avoiding a head part of the connecting member.

16. The LCD of claim 14, wherein a spacer tape having a thickness substantially equal to a thickness of the head part of the connecting member is provided on the PCB.

17. A light emitting diode (LED) module comprising:

- a printed circuit board (PCB);
- an LED package comprising a side view LED package that is mounted on one side of an upper surface of the PCB to emit light toward an opposite side of the upper surface of the PCB; and
- a connecting member,

 wherein the PCB comprises:

- a base substrate;
- a connecting hole which is formed through an upper surface and a lower surface of the base substrate and through which the connecting member is coupled to the base substrate;
- an insulating layer which is coated on the base substrate while being spaced apart outward from a circumference of the connecting hole by a predetermined distance; and

a spacer tape provided on an upper side of the insulating layer to form a difference in steps around the connecting hole.

18. The LED module of claim 17, wherein a lead terminal is formed on the LED package to provide the LED package with power; and

a lead terminal accommodating groove is formed in the PCB to accommodate the lead terminal.

19. The LED module of claim 17, wherein the PCB further comprises a connector protruding from a lower surface of the PCB to connect the PCB to an external power source.

20. The LED module of claim 17, wherein the PCB further comprises a white tape provided on an upper side of the spacer tape while being adjacent to the LED package.

21. A liquid crystal module assembly comprising:

a liquid crystal panel;

a cover assembly comprising a bezel configured to cover a rim of the liquid crystal panel;

a light guide plate configured to guide light to the liquid crystal panel; and

a light emitting diode (LED) module which emits light to a lateral surface of the light guide plate and supports the light guide plate so that the lateral surface of the light guide plate is disposed at a position substantially coinciding with a position of an end edge of the bezel, as seen in a direction from the bezel to the light guide plate, the LED module comprising:

a plurality of LED packages, and

a printed circuit board (PCB) to which the light guide plate and the LED packages are mounted, the PCB comprising a base substrate, and a connecting hole which is formed in the base substrate to couple the base substrate to the cover assembly.

22. The liquid crystal module assembly of claim 21, wherein the cover assembly comprises:

a top sash which houses the bezel and the liquid crystal panel;

a middle mold configured to be inserted into the top sash into a close proximity to the bezel and to support the liquid crystal panel;

a bottom sash configured to be inserted into the top sash and to support the LED module;

a first connecting member configured to be inserted into the top sash and the bottom sash to secure the top sash and the bottom sash to one another; and

a second connecting member configured to be inserted from an upper surface of the PCB into the connecting hole, to couple the LED module to the bottom sash.

23. The liquid crystal module assembly of claim 22, wherein the bottom sash comprises:

a bottom part which supports the light guide plate;

a substrate accommodating part which is recessed as compared to the bottom part and configured to house the LED module; and

a connector opening formed in the substrate accommodating part.

24. The liquid crystal module assembly of claim 23, wherein the PCB further comprises:

an electrical insulating layer coated on the upper surface of the PCB while excluding an area in contact with a top part of the second connecting member;

a spacer tape which is provided on the electrical insulating layer and configured to create a step so that a top surface of the PCB becomes even with the bottom part to evenly support the light guide plate; and

an electrical connector configured to protrude outside of the LED module through the connector opening in the bottom sash.

* * * * *

专利名称(译)	液晶显示器及其LED模块		
公开(公告)号	US8773617	公开(公告)日	2014-07-08
申请号	US13/418925	申请日	2012-03-13
[标]申请(专利权)人(译)	三星电子株式会社		
申请(专利权)人(译)	SAMSUNG ELECTRONICS CO. , LTD.		
当前申请(专利权)人(译)	SAMSUNG ELECTRONICS CO. , LTD.		
[标]发明人	CHOI SUK JU CHO KUN HO KWON YONG HUN LEE KYE HOON HUR GIL TAE LEE YOUNG MIN		
发明人	CHOI, SUK JU CHO, KUN HO KWON, YONG HUN LEE, KYE HOON HUR, GIL TAE LEE, YOUNG MIN		
IPC分类号	G02F1/1335		
CPC分类号	G02B6/0083 G02B6/0031 G02B6/0068 G02B6/0073 G02B6/0085 G02B6/009 G02F1/133308 G02F2001/133314 G02F2001/133317 G02F2001/13332 G02F2201/46 G02B6/0001 G02F1/133345 G02F1/133603 G02F1/133608		
代理机构(译)	萨格鲁MION , PLLC		
优先权	1020110023402 2011-03-16 KR		
其他公开文献	US20120236231A1		
外部链接	Espacenet USPTO		

摘要(译)

液晶显示器 (LCD) 包括盖组件;液晶面板;导光板, 用于将光导向液晶面板;印刷电路板 (PCB), 导光板安装在该印刷电路板上;和发光二极管 (LED) 封装, 其安装在PCB上并将光发射到导光板的侧面。PCB包括基础衬底;连接孔, 形成在基础基板中, 以通过连接构件将基础基板连接到盖组件;绝缘层, 其涂覆在基础基板上, 同时避开连接构件的头部;隔离带设置在绝缘层的上侧, 使得导光板均匀地安装在PCB上。

