



US010310337B2

(12) **United States Patent**
Ogura et al.

(10) **Patent No.:** **US 10,310,337 B2**
(45) **Date of Patent:** **Jun. 4, 2019**

(54) **LIQUID CRYSTAL DISPLAY APPARATUS**

(58) **Field of Classification Search**

(71) Applicant: **Japan Display Inc.**, Tokyo (JP)

CPC combination set(s) only.
See application file for complete search history.

(72) Inventors: **Kenji Ogura**, Kanagawa (JP); **Hironao Tanaka**, Kanagawa (JP); **Hidemasa Yamaguchi**, Kanagawa (JP)

(56) **References Cited**

(73) Assignee: **JAPAN DISPLAY INC.**, Tokyo (JP)

U.S. PATENT DOCUMENTS

(*) Notice: Subject to any disclaimer, the term of this patent is extended or adjusted under 35 U.S.C. 154(b) by 0 days.

7,486,351	B2	2/2009	Itou et al.
7,675,579	B2	3/2010	Suzuki
7,872,622	B2	1/2011	Kim
2003/0090608	A1	5/2003	Kim et al.
2004/0263748	A1*	12/2004	Park G02F 1/134363 349/141

(21) Appl. No.: **15/961,979**

(Continued)

(22) Filed: **Apr. 25, 2018**

FOREIGN PATENT DOCUMENTS

(65) **Prior Publication Data**

JP	07-134301	5/1995
JP	10-170924	6/1998

US 2018/0239202 A1 Aug. 23, 2018

(Continued)

Related U.S. Application Data

OTHER PUBLICATIONS

(63) Continuation of application No. 14/992,196, filed on Jan. 11, 2016, now Pat. No. 9,989,819, which is a continuation of application No. 12/922,575, filed as application No. PCT/JP2009/056274 on Mar. 27, 2009, now Pat. No. 9,280,021.

PCT International Search Report dated Jun. 9, 2009.

(Continued)

(30) **Foreign Application Priority Data**

Primary Examiner — Nan-Ying Yang

Mar. 28, 2008 (JP) 2008-085497

(74) *Attorney, Agent, or Firm* — Dentons US LLP

(51) **Int. Cl.**

G09G 3/36	(2006.01)
G02F 1/1343	(2006.01)
G02F 1/1337	(2006.01)
G02F 1/1362	(2006.01)

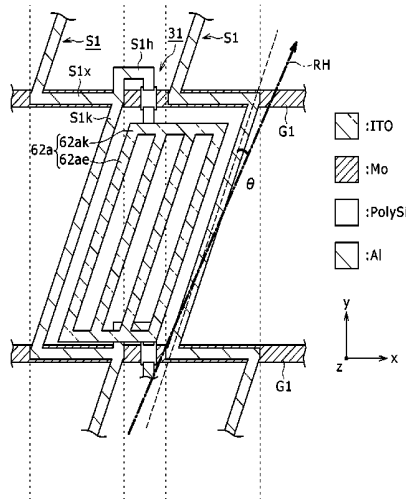
(57) **ABSTRACT**

(52) **U.S. Cl.**

CPC .. **G02F 1/134336** (2013.01); **G02F 1/133784** (2013.01); **G02F 1/134363** (2013.01); **G02F 1/136286** (2013.01); **G02F 2001/134372** (2013.01)

Each of branch portions of a pixel electrode and inclined portions of data lines extends in a direction different from an x direction and a y direction in a pixel region and inclined with respect to the y direction. Further, a liquid crystal layer is orientated in a direction different from the x direction and the y direction in the pixel region and inclined with respect to the y direction.

9 Claims, 10 Drawing Sheets



(56)

References Cited

U.S. PATENT DOCUMENTS

2006/0066798 A1 3/2006 Hwang et al.
2006/0290869 A1* 12/2006 Suzuki G02F 1/134363
349/143
2007/0035675 A1 2/2007 Um et al.
2007/0171319 A1 7/2007 Fujita et al.
2007/0229749 A1 10/2007 Kaneko et al.
2009/0015762 A1 1/2009 Noguchi
2009/0115712 A1 5/2009 Morimoto et al.

FOREIGN PATENT DOCUMENTS

JP 2000-292782 10/2000
JP 2005-208567 8/2005
JP 2005-338264 12/2005
JP 2007-226200 9/2007
JP 2007-264231 10/2007
JP 2009-015204 1/2009
JP 2009-115834 5/2009
JP 2009-115841 5/2009
KR 10-2004-0043485 5/2004
KR 10-2005-0068262 7/2005
KR 10-2007-0037146 4/2007

OTHER PUBLICATIONS

Korean Office Examination Report issued in connection with related Korean Patent Application No. 10-2010-7020711 dated Oct. 31, 2014 with English translation.

Japanese Office Action dated Sep. 11, 2012, in connection with counterpart JP Application No. 2008-085497.

* cited by examiner

FIG. 1

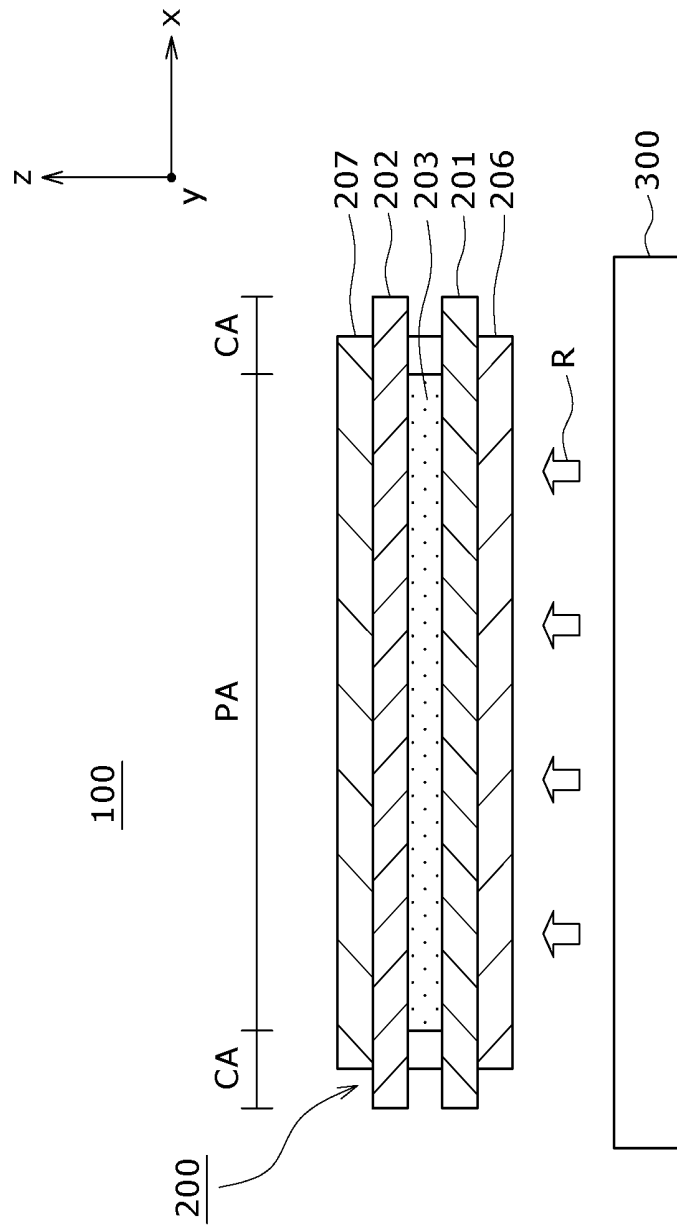


FIG. 2

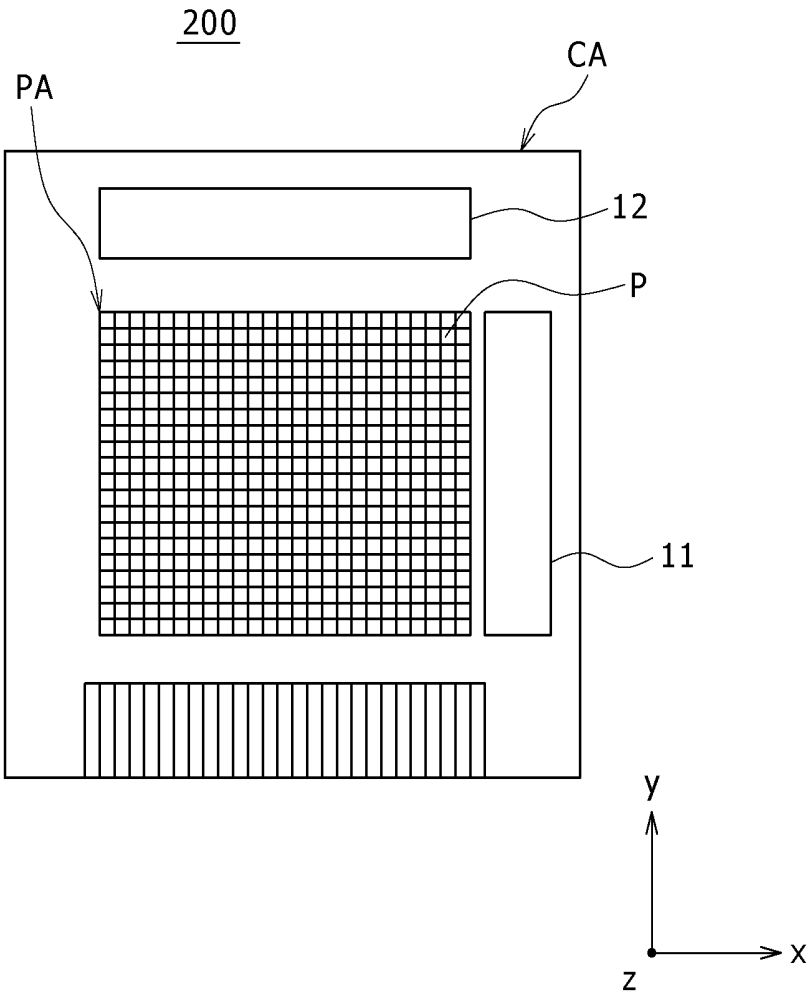


FIG. 3

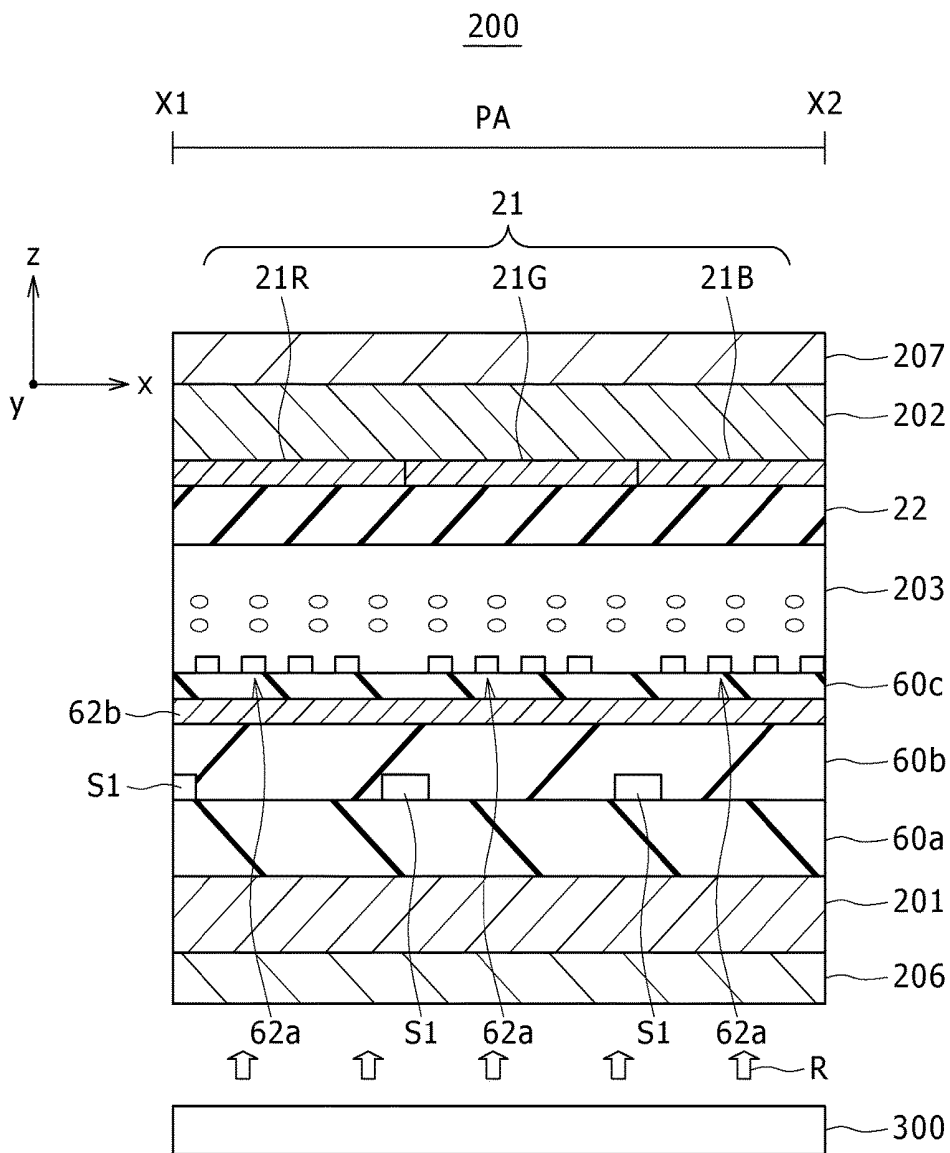


FIG. 4

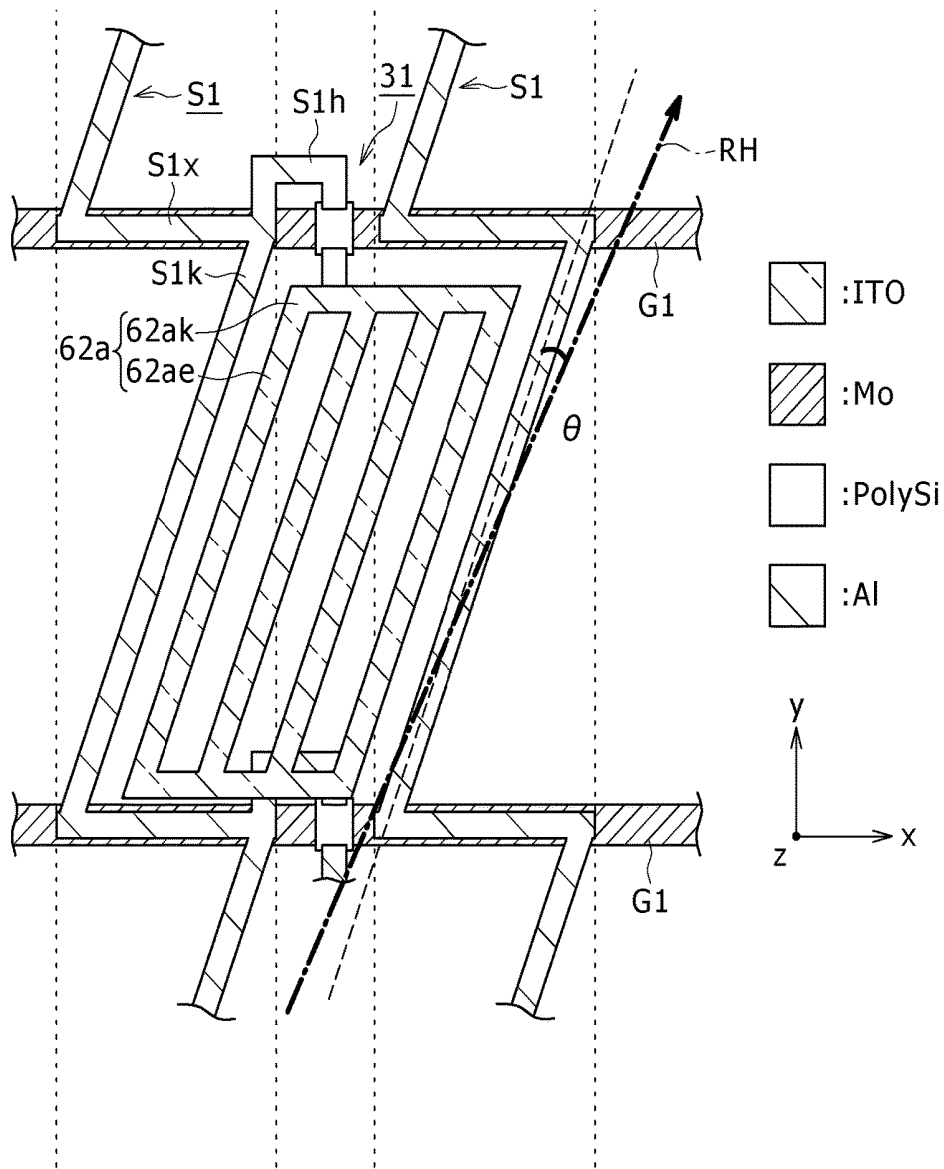


FIG. 5

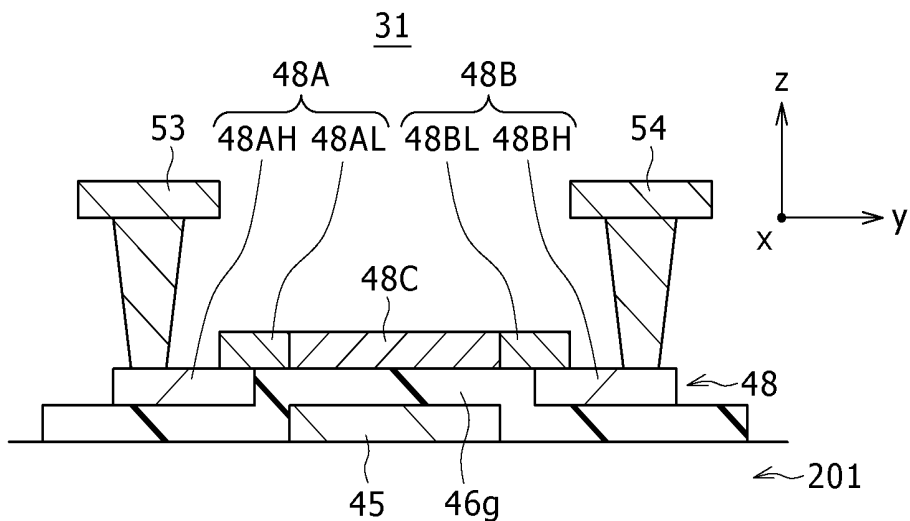


FIG. 6

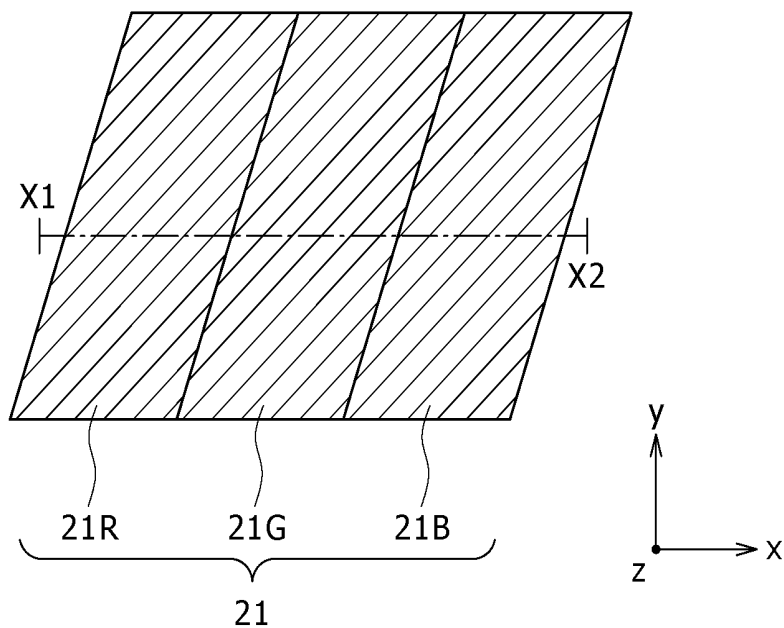


FIG. 7

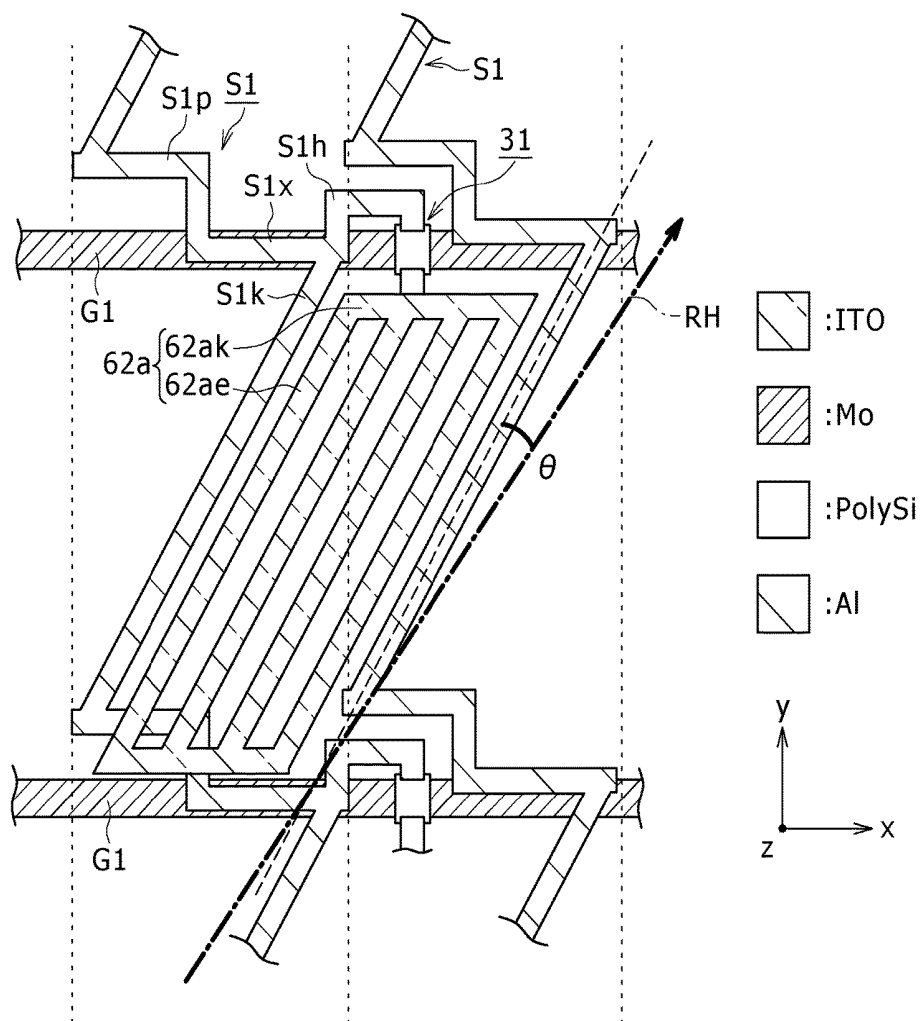


FIG. 8

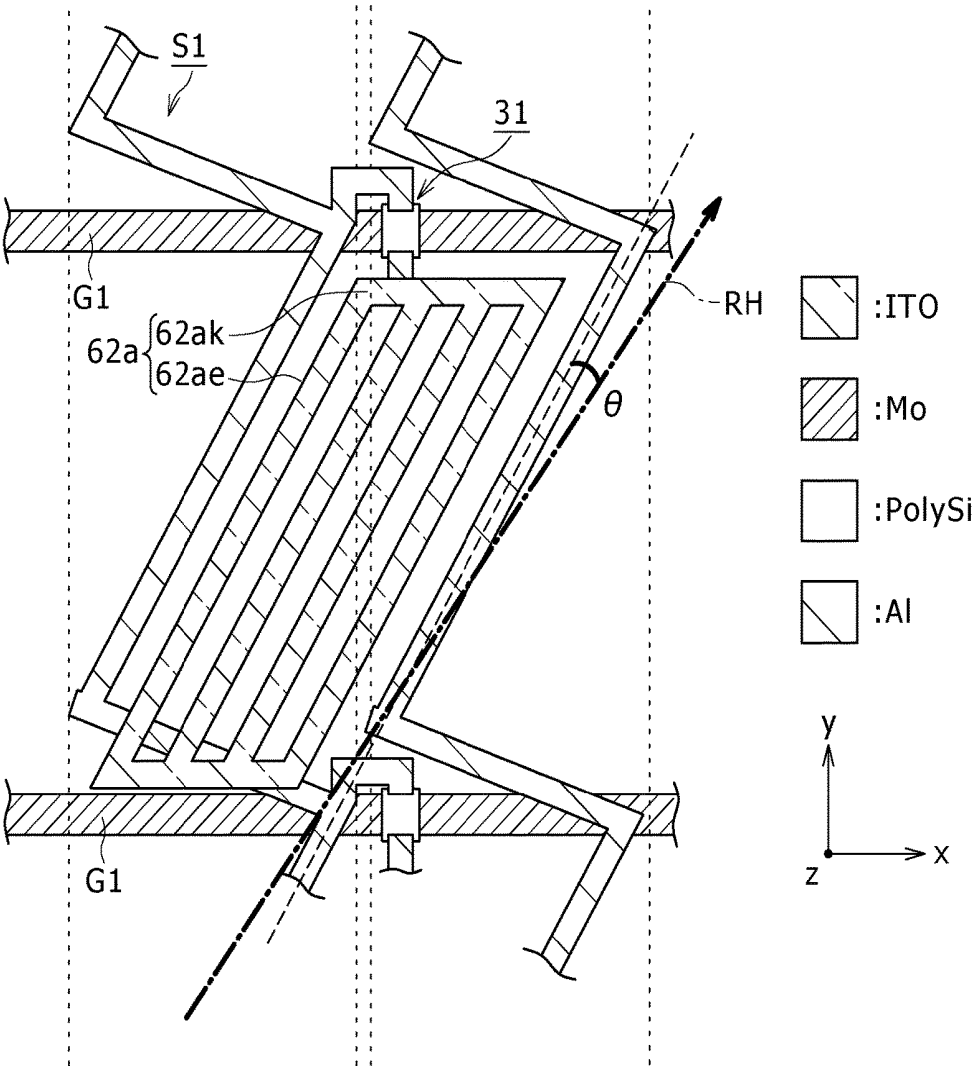


FIG. 9

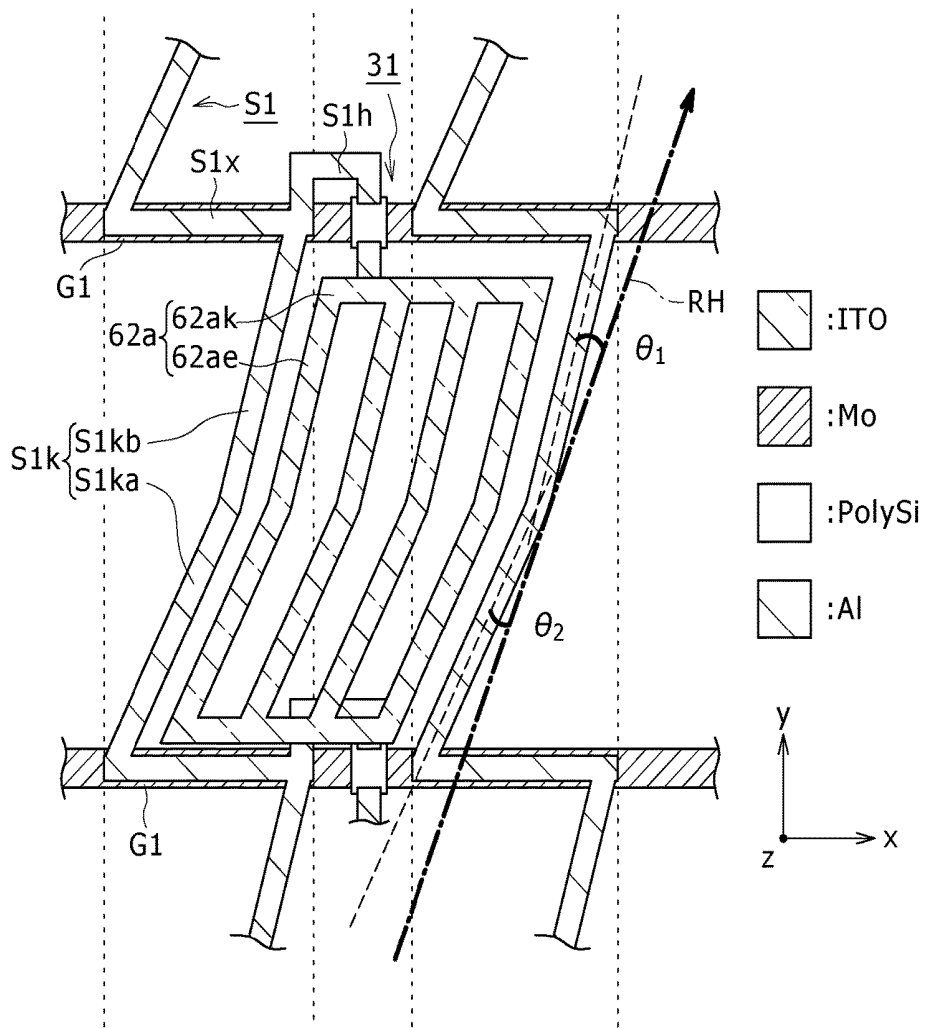


FIG. 10

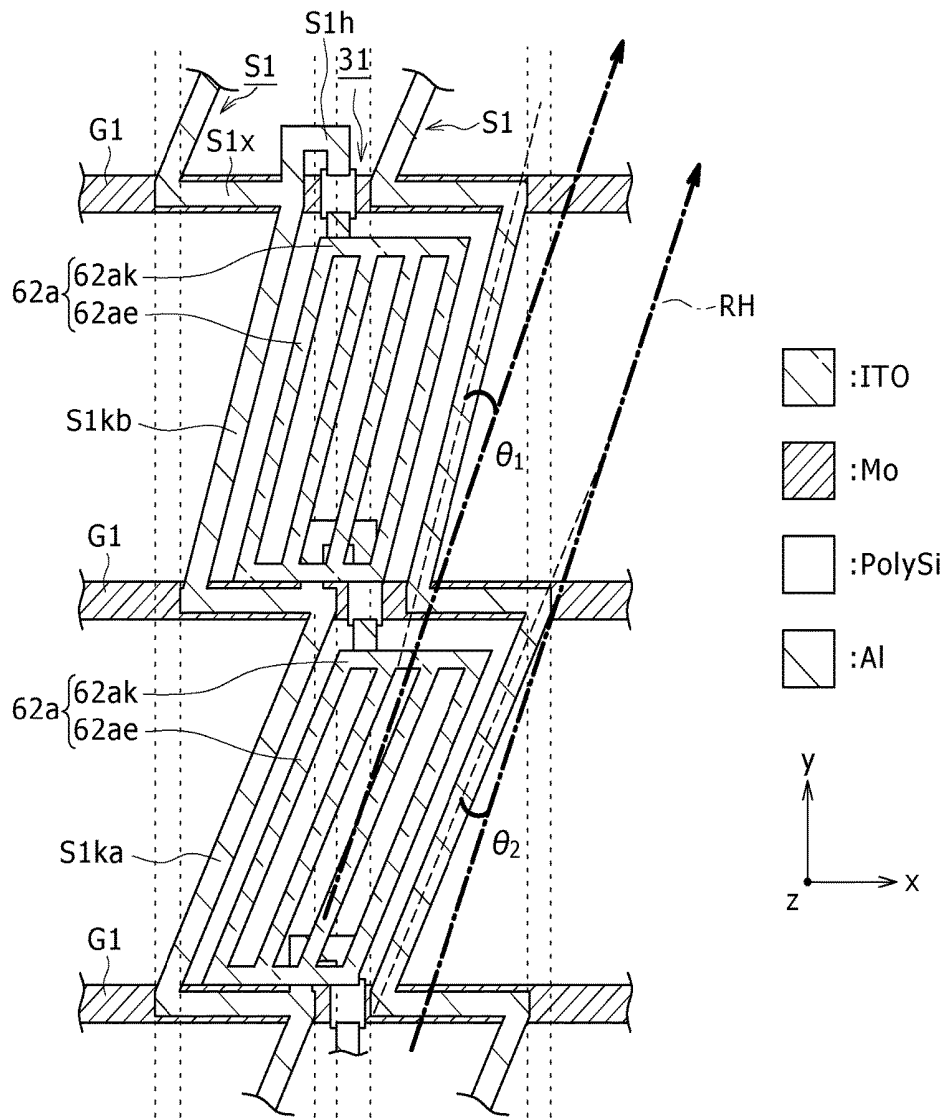
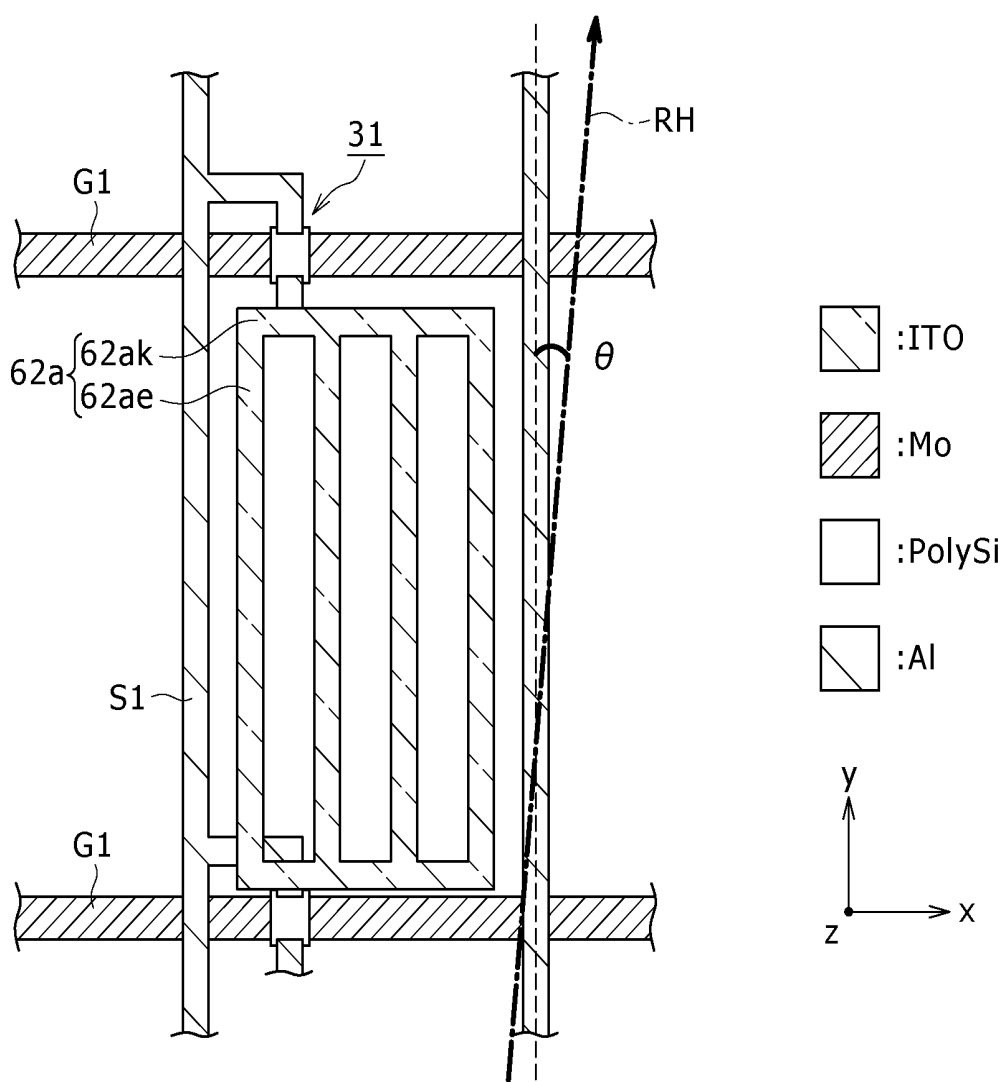


FIG. 11



LIQUID CRYSTAL DISPLAY APPARATUS

RELATED APPLICATION DATA

This application is a continuation of U.S. patent application Ser. No. 14/992,196 filed Jan. 11, 2016, which is a continuation of U.S. patent application Ser. No. 12/922,575 filed Sep. 14, 2010, now U.S. Pat. No. 9,280,021 issued Mar. 8, 2016, which is the Section 371 National Stage of PCT/JP2009/056274 filed Mar. 27, 2009 the entireties of which are incorporated herein by reference to the extent permitted by law. The present application claims the benefit of priority to Japanese Patent Application No. JP 2008-085497 filed on Mar. 28, 2008 in the Japan Patent Office, the entirety of which is incorporated by reference herein to the extent permitted by law.

TECHNICAL FIELD

This invention relates to a liquid crystal display apparatus wherein a transverse electric field is applied to a liquid crystal layer in a pixel region in which a plurality of pixels are provided in a matrix on a liquid crystal panel such that an image is displayed in the pixel region with light emitted through the liquid crystal layer and a polarizing plate.

BACKGROUND ART

A liquid crystal display apparatus includes a liquid crystal panel wherein a liquid crystal layer is encapsulated between a pair of substrates as a display panel. The liquid crystal panel is, for example, of the transmission type wherein it modulates illuminating light emitted from an illumination apparatus such as a backlight provided on the rear face of the liquid crystal panel and transmits the modulated light there-through. Then, display of an image is carried out on the front face of the liquid crystal panel with the modulated illuminating light.

The liquid crystal panel built in the liquid crystal display apparatus is, for example, of the active matrix type and includes a TFT array substrate having a pixel region in which a plurality of thin film transistors (TFTs) which function as pixel switching elements are formed, an opposing substrate opposing so as to face the TFT array substrate, and a liquid crystal layer provided between the TFT array substrate and the opposing substrate.

In the liquid crystal panel of the active matrix type, an electric field produced between a pixel electrode and a common electrode by inputting a potential to the pixel electrode from a pixel switching element is applied to the liquid crystal layer to vary the orientation of liquid crystal molecules of the liquid crystal layer. By this, the transmission factor of light to be transmitted through the pixel is controlled to modulate the light to pass therethrough to carry out display of an image.

In such a liquid crystal panel as just described, in addition to a TN (Twisted Nematic) mode, an ECB (Electrically Controlled Birefringence) mode, a vertical orientation mode and so forth, various display modes such as an IPS (In-Plane-Switching) type and an FFS (Fringe Field Switching) type are known as modes wherein a transverse electric field is applied to a liquid crystal layer (refer to, for example, Patent Document 1 and Patent Document 2). In the modes wherein a transverse electric field is applied, it has been proposed to apply dual domains (refer to, for example, Patent Document 3).

Patent Document 1: Japanese Patent Laid-Open No. Hei 10-170924

Patent Document 2: Japanese Patent Laid-Open No. 2007-226200

Patent Document 3: Japanese Patent Laid-Open No. 2007-264231

DISCLOSURE OF INVENTION

A liquid crystal display apparatus is incorporated, for example, in a portable mobile apparatus. In such an instance, it is necessitated to configure the liquid crystal display apparatus such that an image displayed thereon can be visually observed by a user in any of a landscape (horizontally long) state wherein a pixel region of a rectangular shape on which an image is to be displayed is long in an x direction and a portrait (vertically long) state wherein the pixel region is long in a y direction.

However, for example, where a user is outdoors, the user sometimes visually observes an image on the screen through polarizing sunglasses. Therefore, in the case wherein the liquid crystal display apparatus is of the transverse electric field type such as the IPS type or the FFS type described above, the visibility sometimes drops in response to an angle when the user visually observes the screen.

FIG. 11 is a plan view schematically showing part of pixels provided in a pixel region of a liquid crystal display apparatus of the FFS type. In FIG. 11, part of a pixel on a TFT array substrate is shown.

As shown in FIG. 11, on the TFT array substrate, a pixel switching element 31, a pixel electrode 62a, a data line S1 and a gate line G1 are formed. In addition, though not shown, a common electrode is provided in an opposing relationship to the pixel electrode 62a on the TFT array substrate.

Here, the pixel switching element 31 is, for example, a bottom gate type TFT as shown in FIG. 11.

Further, the pixel electrode 62a is formed in a comb-tooth shape on an xy plane defined by an x direction and a y direction which define the pixel region as shown in FIG. 11. In particular, as shown in FIG. 11, the pixel electrode 62a has a trunk portion 62ak and a branch portion 62ae, and the trunk portion 62ak extends in the x direction and a plurality of such branch portions 62ae extend in the y direction. The pixel electrode 62a is electrically connected to the drain electrode of the pixel switching element 31.

Further, the data line S1 extends in the y direction as shown in FIG. 11 and is electrically connected to the source electrode of the pixel switching element 31.

The gate line G1 extends in the x direction as shown in FIG. 11 and is electrically connected to the gate electrode of the pixel switching element 31.

As shown in FIG. 11, the liquid crystal layer is subject to an orientation process by carrying out a rubbing process setting the rubbing direction RH to a direction inclined by a predetermined angle θ (for example, 5°) with respect to a direction in which the branch portion 62ae of the pixel electrode 62a and the data line S1 extend in the pixel region PA.

As described above, in the case of the transverse electric field type such as the FFS type, the pixel electrode 62a has a comb-tooth shape, and the plural branch portions 62ae thereof extend in the y direction. Therefore, since the transmission axis along which light is transmitted through the liquid crystal panel is determined depending upon the direction in which the branch portions 62ae extend, when the pixel region of a rectangular shape is placed into a state

in the landscape state, for example, the transmission axis of the pixel region extends along the longitudinal direction. On the other hand, when the pixel region is placed into a state in the portrait state, for example, the transmission axis extends along a lateral direction of the screen of a rectangular shape.

The polarizing sunglasses include polarizing elements having a transmission axis along the x direction or the y direction such that a user will visually observe an image through the polarizing elements.

Therefore, when a state of one of the landscape state and the portrait state is entered, the transmission axis of the liquid crystal panel and the transmission axis of the polarizing sunglasses are sometimes much different from each other. Therefore, it sometimes becomes difficult for the user to visually observe an image displayed on the liquid crystal panel.

Accordingly, as described hereinabove, the visibility of the screen sometimes deteriorates in response to the angle when the user visually observes the screen.

In order to eliminate this fault, a method of disposing a phase difference plate on a face of a liquid crystal panel is available. In this instance, however, the fabrication cost increases, and light is absorbed by the phase difference plate. Therefore, since the light transmittance drops generally, the image quality sometimes drops.

Further, by setting the transmission axis of the liquid crystal panel with respect to the sides of the screen of a rectangular shape, the visibility of the polarizing sunglasses can be improved. For example, the angle of the direction in which the branch portions of the comb-tooth electrode described hereinabove extend is inclined at an angle of 45° with respect to the sides of the screen. However, when the branch portions of the comb-tooth electrode are inclined, domains through which light is not transmitted sometimes increase, resulting in decrease of the light transmittance, and the image quality sometimes drops.

Further, where data lines are connected in the pixel region in which the pixels are disposed in the x direction and the y direction so as to connect to pixels juxtaposed in a direction inclined with respect to the y direction in order to incline the transmission axis of the liquid crystal panel with respect to the y direction, a scanning signal and a data signal produced so as to be displayed using the line sequential system cannot be used as they are, but it becomes necessary to separately carry out a signal process for converting the signals. Therefore, such faults as increase of the fabrication cost and deterioration of the image quality by delay by the signal process sometimes occur, and the visibility drops.

In this manner, it sometimes is difficult to improve the visibility due to occurrence of such faults as described above.

Accordingly, the present invention provides a liquid crystal display apparatus which can improve the visibility.

According to the present invention, there is provided a liquid crystal display apparatus wherein, in a pixel region of a liquid crystal panel in which a plurality of pixels are provided in a matrix in a first direction and a second direction perpendicular to the first direction, a pixel electrode and a common electrode apply a transverse electric field to a liquid crystal layer such that an image is displayed in the pixel region with light emitted through the liquid crystal layer and a polarizing plate, wherein the liquid crystal panel has a plurality of first wire lines disposed in a spaced relationship from each other in the second direction with regard to the plural pixels so as to define the plural pixels juxtaposed in the second direction, and a plurality of

second wire lines disposed in a spaced relationship from each other in the first direction with regard to the plural pixels so as to define the plural pixels juxtaposed in the first direction; each of the second wire lines includes an inclined portion extending in a direction different from the first direction and the second direction in the pixel region and inclined with respect to the second direction; the pixel electrode includes a trunk portion extending in the first direction, and a branch portion connected to the trunk portion and extending in a direction different from the first direction and the second direction in the pixel region and inclined with respect to the second direction, and a plurality of such branch portions are provided in a spaced relationship from each other in the first direction; and the liquid layer includes liquid crystal molecules orientated in an inclined relationship with respect to the first direction or the second direction in the pixel region.

Preferably, the image displayed with the light emitted through the liquid crystal layer and the polarizing plate in the pixel region is visually observed through a polarizing element whose transmission axis coincides with the first direction or the second direction.

Preferably, the branch portions extend along a direction along which the inclined portions of the second wire lines extend.

Preferably, each of the inclined portions of the second wire lines and the branch portions extends in a direction inclined within an angular range equal to or greater than 2° but equal to or smaller than 45° with respect to the second direction in the pixel region.

Preferably, each of the inclined portions of the second wire lines and the branch portions extends in a direction inclined at the angle of 45° with respect to the second direction in the pixel region.

Preferably, each of the second wire lines includes a bent portion bent like a staircase in the first direction and the second direction so as to be spaced away from another second wire line provided so as to correspond to another adjacent pixel in the pixel region.

Preferably, each of the inclined portions of the second wire lines includes a first inclined portion extending in a third direction different from the first direction and the second direction, and a second inclined portion extending in a fourth direction different from the first direction, second direction and third direction, and the first inclined portion and the second inclined portion are formed so as to correspond to one pixel in the pixel region.

Preferably, each of the inclined portions of the second wire lines includes a first inclined portion extending in a third direction different from the first direction and the second direction, and a second inclined portion extending in a fourth direction different from the first direction, second direction and third direction, and the first inclined portion and the second inclined portion are disposed alternately in the plural pixels juxtaposed in the second direction in the pixel region.

In the present invention, each of the branch portions of the pixel electrode and the inclined portions of the second wire lines extends in the direction different from the first direction and the second direction in the pixel region and inclined with respect to the second direction. Further, the liquid crystal layer is orientated in the direction different from the first direction and the second direction in the pixel region and inclined with respect to the second direction.

According to the present invention, a liquid crystal display apparatus which can improve the visibility can be provided.

BRIEF DESCRIPTION OF THE DRAWINGS

FIG. 1 is a sectional view showing a configuration of a liquid crystal display apparatus **100** in an embodiment 1 according to the present invention.

FIG. 2 is a plan view showing a liquid crystal panel **200** in the embodiment 1 according to the present invention.

FIG. 3 is a sectional view schematically showing part of a pixel **P** provided in a pixel region **PA** of the liquid crystal panel **200** in the embodiment 1 according to the present invention.

FIG. 4 is a plan view of a subpixel of the pixel **P** provided in the pixel region **PA** in the embodiment 1 according to the present invention.

FIG. 5 is a sectional view showing a pixel switching element **31** in the embodiment 1 according to the present invention.

FIG. 6 is a plan view showing part of an opposing substrate **202** in the embodiment 1 according to the present invention.

FIG. 7 is a plan view schematically showing part of a TFT array substrate **201** in a pixel **P** provided in a pixel region **PA** in an embodiment 2 according to the present invention.

FIG. 8 is a plan view schematically showing part of the TFT array substrate **201** in the pixel **P** provided in the pixel region **PA** where a data line **S1** is formed without providing a bent portion **S1p** in the embodiment 2 according to the present invention.

FIG. 9 is a plan view schematically showing part of a TFT array substrate **201** in a pixel **P** provided in a pixel region **PA** in an embodiment 3 according to the present invention.

FIG. 10 is a plan view schematically showing part of a TFT array substrate **201** in a pixel **P** provided in a pixel region **PA** in an embodiment 4 according to the present invention.

FIG. 11 is a plan view schematically showing part of a pixel provided in a pixel region in a liquid crystal display apparatus of the FFS type.

BEST MODE FOR CARRYING OUT THE INVENTION

An example of embodiments of the present invention is described.

Embodiment 1

(Configuration of the Liquid Crystal Display Apparatus)

FIG. 1 is a sectional view showing a configuration of a liquid crystal display apparatus **100** in an embodiment 1 according to the present invention.

The liquid crystal display apparatus **100** of the present embodiment has a liquid crystal panel **200** and a backlight **300** as shown in FIG. 1. The components are described in order.

The liquid crystal panel **200** is of the active matrix type, and a TFT array substrate **201** and an opposing substrate **202** face each other in a spaced relationship from each other as shown in FIG. 1. A liquid crystal layer **203** is provided in such a manner as to be sandwiched between the TFT array substrate **201** and the opposing substrate **202**.

As shown in FIG. 1, the backlight **300** is disposed in such a manner as to be positioned on the TFT array substrate **201** side of the liquid crystal panel **200**, and illuminating light **R** emitted from the backlight **300** is irradiated upon the face of the TFT array substrate **201** on the opposite side to the face which opposes to the opposing substrate **202**. Although

details are hereinafter described, the liquid crystal panel **200** includes a pixel region **PA** in which a plurality of pixels (not shown) are disposed for displaying an image. The liquid crystal panel **200** receives the illuminating light **R** emitted from the backlight **300** installed on the rear face side of the liquid crystal panel **200** through a first polarizing plate **206** and modulates the illuminating light **R** received from the rear face thereof in the pixel region **PA**. Here, a TFT (not shown) is provided as a pixel switching element so as to correspond to each pixel on the TFT array substrate **201**, and the pixel switching element (not shown) carries out switching control of a pixel to modulate the illuminating light **R** received from the rear face. Then, the modulated illuminating light **R** is emitted to the front face side through a second polarizing plate **207** so that an image is displayed in the pixel region **PA**. In short, the liquid crystal panel **200** of the present embodiment is of the transmission type, and a color image is displayed, for example, on the front face side of the liquid crystal panel **200**.

In the present embodiment, the liquid crystal display apparatus **100** is, for example, of the normally black type, and various components such as the first polarizing plate **206** and the second polarizing plate **207** are disposed such that, when no voltage is applied to the liquid crystal layer **203** in the liquid crystal panel **200**, the light transmittance drops to carry out black display, but when a voltage is applied to the liquid crystal layer **203**, the light transmittance rises. In particular, the transmission axes of the components are disposed such that, when no voltage is applied to the liquid crystal layer **203**, light is blocked by the second polarizing plate **207** to carry out black display, but when a voltage is applied to the liquid crystal layer **203**, light is transmitted from the second polarizing plate **207**.

Further, in the present embodiment, the liquid crystal display apparatus **100** is incorporated in a portable mobile apparatus, and an image displayed by light emitted through the liquid crystal layer **203** and the second polarizing plate **207** in the pixel region **PA** is visually observed by a user, who wears polarizing sunglasses each including a polarizing element having a transmission axis in the **x** direction or the **y** direction, through the polarizing elements in a state wherein the liquid crystal display apparatus **100** is in the landscape (horizontally long) orientation or the portrait (vertically long) orientation.

As shown in FIG. 1, the backlight **300** is opposed to the rear face of the liquid crystal panel **200**, and emits the illuminating light **R** to the pixel region **PA** of the liquid crystal panel **200**.

In particular, the backlight **300** is disposed so as to be positioned on the TFT array substrate **201** side from between the TFT array substrate **201** and the opposing substrate **202** which configure the liquid crystal panel **200**. The backlight **300** irradiates the illuminating light **R** upon the face of the TFT array substrate **201** on the opposite side to the face which opposes to the opposing substrate **202**. Here, for example, white light is irradiated as the illuminating light **R**. In short, the backlight **300** irradiates the illuminating light **R** so as to advance from the TFT array substrate **201** side toward the opposing substrate **202** side.

(Configuration of the Liquid Crystal Panel)

A general configuration of the liquid crystal panel **200** is described.

FIG. 2 is a plan view showing the liquid crystal panel **200** in the embodiment 1 according to the present invention.

The liquid crystal panel **200** has the pixel region **PA** and a peripheral region **CA** as shown in FIG. 2.

In the pixel region PA of the liquid crystal panel 200, a plurality of pixels P are disposed along the face thereof as shown in FIG. 2. In particular, in the pixel region PA, a plurality of pixels P are disposed in a matrix such that they are juxtaposed in an x direction and a y direction which is perpendicular to the x direction. The pixels P are driven by a line-sequential method to display an image.

On the liquid crystal panel 200, the peripheral region CA is positioned so as to surround the periphery of the pixel region PA as shown in FIG. 2. In the peripheral region CA, a vertical driving circuit 11 and a horizontal driving circuit 12 are formed as shown in FIG. 2. For example, the vertical driving circuit 11 and the horizontal driving circuit 12 are configured from semiconductor elements formed similarly to the pixel switching elements described hereinabove. The vertical driving circuit 11 and the horizontal driving circuit 12 individually drive the plural pixels P provided in the pixel region PA, for example, by a line-sequential method to execute image display.

(Configuration of the Pixel Region of the Liquid Crystal Panel)

FIG. 3 is a sectional view schematically showing part of a pixel P provided in the pixel region PA of the liquid crystal panel 200 in the embodiment 1 according to the present invention.

As shown in FIG. 3, the liquid crystal panel 200 has the TFT array substrate 201, opposing substrate 202, and liquid crystal layer 203. In the liquid crystal panel 200, the TFT array substrate 201 and the opposing substrate 202 are pasted to each other in a spaced relationship from each other as shown in FIG. 3, and the liquid crystal layer 203 is provided in the gap between the TFT array substrate 201 and the opposing substrate 202. For example, spacers (not shown) are interposed between the TFT array substrate 201 and the opposing substrate 202 such that the TFT array substrate 201 and the opposing substrate 202 are opposed to each other with a gap left therebetween and are pasted to each other using a seal material (not shown). In the present embodiment, the liquid crystal panel 200 is configured so as to be ready for a display mode of the FFS type.

In this liquid crystal panel 200, the TFT array substrate 201 is a substrate of an insulator which transmits light therethrough and is formed, for example, from glass. As shown in FIG. 3, pixel electrodes 62a, a common electrode 62b and data lines S1 are formed on a face of the TFT array substrate 201 which opposes to the opposing substrate 202.

Further, in the liquid crystal panel 200, the opposing substrate 202 is a substrate of an insulator which transmits light therethrough and is formed, for example, from glass similarly to the TFT array substrate 201. As shown in FIG. 3, the opposing substrate 202 opposes to the TFT array substrate 201 in a spaced relationship from each other. A color filter layer 21 is formed on a face of the opposing substrate 202 which opposes to the TFT array substrate 201 as shown in FIG. 3. Here, the color filter layer 21 includes a red filter layer 21R, a green filter layer 21G and a blue filter layer 21B such that the three primary colors of red, green and blue form one set.

Details of the TFT array substrate 201 which configure the liquid crystal panel 200 are described.

FIG. 4 is a plan view schematically showing part of the TFT array substrate 201 with regard to a pixel P provided in the pixel region PA in the embodiment 1 according to the present invention.

Referring to FIG. 4, different slanting lines are applied depending upon materials from which the individual members are configured as shown in a legend. It is to be noted

that, while, in FIG. 4, subpixels corresponding to the red filter layer 21R in the pixel P shown in FIG. 3 are shown, also members of each of subpixels corresponding to the green filter layer 21G and blue filter layer 21B are formed similarly as in the case of the subpixel corresponding to the red filter layer 21R.

As shown in FIG. 4, in addition to the members shown in FIG. 3 of the pixel electrodes 62a, common electrode 62b and data lines S1, pixel switching elements 31 and gate lines G1 are formed on the TFT array substrate 201. The pixel switching elements 31 and the gate lines G1 are formed on a face of the TFT array substrate 201 which opposes to the opposing substrate 202.

Various portions provided on the TFT array substrate 201 are described successively.

On the TFT array substrate 201, through not shown in FIG. 3, the pixel switching elements 31 are formed on a face of the TFT array substrate 201 which opposes to the opposing substrate 202, and are covered with an interlayer insulating film 60a.

FIG. 5 is a sectional view showing a pixel switching element 31 in the embodiment 1 according to the present invention.

As shown in FIG. 5, the pixel switching element 31 includes a gate electrode 45, a gate insulating film 46g and a semiconductor layer 48 and is formed as a bottom gate type TFT of a LDD (Lightly Doped Drain) structure.

In particular, in the pixel switching element 31, the gate electrode 45 is provided on a face of the TFT array substrate 201 in such a manner as to oppose to a channel region 48C of the semiconductor layer 48 through the gate insulating film 46g as shown in FIG. 5. Here, the gate electrode 45 is formed using a metal material such as, for example, molybdenum as shown in FIG. 4.

Further, in the pixel switching element 31, the gate insulating film 46g is formed in such a manner as to cover the gate electrode 45 as shown in FIG. 5. Here, the gate insulating film 46g is formed using an insulating material such as a silicon oxide film or a silicon nitride film.

Further, in the pixel switching element 31, the semiconductor layer 48 has the channel region 48C formed thereon in such a manner as to correspond to the gate electrode 45 as shown in FIG. 5, and a pair of source-drain regions 48A and 48B are formed in such a manner as to sandwich the channel region 48C therebetween. The source-drain regions 48A and 48B in pair have a pair of low concentration impurity regions 48AL and 48BL formed thereon in such a manner as to sandwich the channel region 48C therebetween. Further, a pair of high concentration impurity regions 48AH and 48BH having a higher impurity concentration than the low concentration impurity regions 48AL and 48BL are formed in such a manner as to sandwich the low concentration impurity regions 48AL and 48BL therebetween. Here, the semiconductor layer 48 is formed using a semiconductor material such as, for example, polycrystalline silicon as shown in FIG. 4, and the source-drain regions 48A and 48B in pair are provided in a juxtaposed relationship in a direction perpendicular to the x direction along which the gate lines G1 extend such that the channel region 48C is sandwiched by the source-drain regions 48A and 48B.

In the pixel switching element 31, a source electrode 53 is provided so as to be electrically connected to the one source-drain region 48A while a drain electrode 54 is provided so as to be connected to the other source-drain region 48A. Further, as shown in FIG. 4, the source electrode 53 is connected to the data line S1 through a contact

(not shown), and the drain electrode **54** is connected to the pixel electrode **62a** through a contact (not shown). Here, the source electrode **53** and the drain electrode **54** are formed using a conductive material such as aluminum.

In the TFT array substrate **201**, the pixel electrode **62a** is formed on the face of the TFT array substrate **201** which opposes to the opposing substrate **202** as shown in FIG. 3.

Here, the pixel electrode **62a** is provided, as shown in FIG. 3, on an insulating film **60c** formed from an insulating material in such a manner as to cover the common electrode **62b** on the TFT array substrate **201**. For example, the pixel electrode **62a** is formed on the insulating film **60c** formed as a silicon nitride film. This pixel electrode **62a** is provided so as to correspond to the red filter layer **21R**, green filter layer **21G** and blue filter layer **21B** which configure the color filter layer **21** as shown in FIG. 3. The pixel electrode **62** is a so-called transparent electrode and is formed using, for example, ITO.

Meanwhile, the pixel electrode **62a** is electrically connected to the drain electrode **54** of the pixel switching element **31** as shown in FIG. 4. The pixel electrode **62a** generates a transverse electric field between the pixel electrode **62a** and the common electrode **62b** by a potential supplied thereto as an image signal from the pixel switching element **31** to apply a voltage to the liquid crystal layer **203**.

In the present embodiment, since the liquid crystal panel **200** is of the FFS type, the pixel electrode **62a** is formed in a comb-tooth shape in a direction of the xy face of the TFT array substrate **201** opposing to the opposing substrate **202** as shown in FIG. 4.

In particular, the pixel electrode **62a** has a trunk portion **62ak** and a branch portion **62ae** as shown in FIG. 4.

In the pixel electrode **62a**, the trunk portion **62ak** extends in the x direction as shown in FIG. 4. Here, as shown in FIG. 4, a plurality of gate lines **G1** extending in the x direction are juxtaposed in a spaced relationship from each other in the y direction, and two trunk portions **62ak** are provided between the plural gate lines **G1** juxtaposed in the y direction.

In the pixel electrode **62a**, the branch portion **62ae** is connected to the trunk portion **62ak** and extends in a direction different from the x direction and the y direction and inclined with respect to the y direction as shown in FIG. 4. A plurality of such branch portions **62ae** are disposed so as to be juxtaposed in a spaced relationship from each other in the x direction as shown in FIG. 4, and the plural branch portions **62ae** are connected at one end portion thereof to the trunk portion **62ak** and extend so as to be parallel to each other. In the present embodiment, a plurality of data lines **S1** extending in a direction different from the x direction and the y direction and inclined with respect to the y direction are provided and juxtaposed in a spaced relationship from each other in the x direction as shown in FIG. 4. For example, four branch portions **62ae** are provided between the plural gate lines **G1** juxtaposed in the y direction. Further, the branch portions **62ae** are formed so as to extend in the direction along which the data lines **S1** extend. Here, the branch portions **62ae** preferably extend in a direction inclined within an angular range equal to or greater than 2° but equal to or smaller than 45° with respect to the y direction, and in the present embodiment, the branch portions **62ae** are inclined, for example, at an angle of 20°.

In the TFT array substrate **201**, the common electrode **62b** is formed on the face side of the TFT array substrate **201** which opposes to the opposing substrate **202** as shown in FIG. 3. Here, the common electrode **62b** is provided on a flattening film **60b** formed on the TFT array substrate **201**. For example, the common electrode **62b** is provided on the

flattening film **60b** formed from an organic compound such as an acrylic resin. The common electrode **62b** is a so-called transparent electrode and is formed, for example, using ITO. The common electrode **62b** opposes to the plural pixel electrodes **62a** provided so as to correspond to the plural pixels **P** with the insulating film **60c** interposed therebetween. In the present embodiment, since the liquid crystal panel **200** is of the FFS type, the common electrode **62b** is formed solidly so as to cover the overall area of the pixel region **PA** in the direction of the xy plane of the TFT array substrate **201** opposing to the opposing substrate **202**.

On the TFT array substrate **201**, each data line **S1** is formed on the face side of the TFT array substrate **201** which opposes to the opposing substrate **202** as shown in FIG. 3. Here, the data line **S1** is provided on the interlayer insulating film **60a** formed on the TFT array substrate **201**.

As shown in FIG. 4, the data line **S1** is formed using a metal material such as, for example, aluminum. The data line **S1** is electrically connected to the source electrode **53** of the pixel switching element **31**.

Further, a plurality of such data lines **S1** are provided in a spaced relationship from each other in the x direction as shown in FIG. 4. Here, the plural data lines **S1** are provided in a plurality of pixels **P** in such a manner as to define the plural pixels **P** juxtaposed in the x direction.

In the present embodiment, each data line **S1** includes an inclined portion **S1k**, a horizontal portion **S1x** and a leader portion **S1h** as shown in FIG. 4, and the data lines **S1** are formed in the plural pixels **P** so as to correspond to the plural pixels **P** juxtaposed in the y direction.

The inclined portion **S1k** of the data line **S1** extends in a direction different from the x direction and the y direction and inclined with respect to the y direction in the pixel region **PA** as shown in FIG. 4. The inclined portion **S1k** of the data line **S1** preferably extends in a direction inclined within an angular range equal to or greater than 2° but equal to or smaller than 45° in the pixel region **PA** similarly to the branch portion **62ae** of the pixel electrode **62a**, and in the present embodiment, the inclined portion **S1k** is inclined at an angle of, for example, 20°.

Further, the horizontal portion **S1x** of the data line **S1** extends in the x direction in the pixel region **PA** as shown in FIG. 4. In particular, the horizontal portion **S1x** is connected to an upper end portion of the inclined portion **S1k** and extends to the left side in the x direction from the upper end portion as shown in FIG. 4. Further, the horizontal portion **S1x** is connected to a lower end portion of the inclined portion **S1k** of the data line **S1** provided in a subpixel of another adjacent pixel **P**. In the present embodiment, the horizontal portion **S1x** is provided in an overlapping relationship with the gate line **G1** provided so as to extend in the x direction as shown in FIG. 4.

Further, the leader portion **S1h** of the data line **S1** is formed so as to draw a channel shape as shown in FIG. 4. In particular, the leader portion **S1h** first extends from the upper end portion of the inclined portion **S1k** to the upper side in the y direction in the pixel region **PA**, and extends to the right side in the x direction, and then extends to the lower side in the y direction until it is connected to the source electrode **53** of the pixel switching element **31**.

On the TFT array substrate **201**, though not shown in FIG. 3, the gate line **G1** is formed on a face of the TFT array substrate **201** such that it is integrated with the gate electrode **45** shown in FIG. 5. In particular, the gate line **G1** is electrically connected to the gate electrode **45** of the pixel switching element **31** as shown in FIG. 4 and formed on the face of the TFT array substrate **201** on the side which

opposes to the opposing substrate **202**, and is covered with the interlayer insulating film **60a** shown in FIG. 3. Here, as shown in FIG. 4, the gate line **G1** is formed using a metal material such as, for example, molybdenum. This gate line **G1** extends in the x direction as shown in FIG. 4, and a plurality of such gate lines **G1** are provided in a spaced relationship from each other in the y direction in such a manner as to define a plurality of pixels **P** juxtaposed in the y direction. The plural gate lines **G1** are connected to the vertical driving circuit **11** shown in FIG. 1, and when image display is to be carried out, a scanning signal is supplied successively to the gate lines **G1** to place the individual pixel switching elements **31** into an on state.

Details of the opposing substrate **202** which configures the liquid crystal panel **200** described above are described.

The color filter layer **21** provided on the opposing substrate **202** is formed on the face of the opposing substrate **202** which opposes to the TFT array substrate **201** as shown in FIG. 3. The color filter layer **21** is formed such that the three primary colors of red, green and blue make one set and includes a red filter layer **21R**, a green filter layer **21G** and a blue filter layer **21B**. For example, each of the red filter layer **21R**, green filter layer **21G** and blue filter layer **21B** is formed by applying application liquid containing a coloring pigment corresponding to the color and a photoresist material by a coating method such as a spin coating method to form a coating film and then carrying patterning working of the coating film by a lithography technique. Here, for example, a polyimide resin is used as the photoresist material. Each of the red filter layer **21R**, green filter layer **21G** and blue filter layer **21B** is configured such that illuminating light **R** emitted from the backlight **300** is colored and transmitted from the TFT array substrate **201** side to the opposing substrate **202** side. In particular, the red filter layer **21R** colors the white illuminating light **R** into red, the green filter layer **21G** colors the illuminating light **R** into green, and the blue filter layer **21B** colors the illuminating light **R** into blue, to transmit the illuminating light **R** therethrough.

FIG. 6 is a plan view showing part of the opposing substrate **202** in the embodiment 1 according to the present invention.

As shown in FIG. 6, the red filter layer **21R**, green filter layer **21G** and blue filter layer **21B** which configure the color filter layer **21** are formed so as to be juxtaposed with each other in the x direction. Here, each portion is formed so as to correspond to the pixel electrode **62a** described hereinabove, and in the present embodiment, the red filter layer **21R**, green filter layer **21G** and blue filter layer **21B** extend in a direction inclined with respect to the y direction similarly to the branch portion **62ae** of the pixel electrode **62a** as shown in FIG. 6.

Details of the liquid crystal layer **203** which configures the liquid crystal panel **200** described above are described.

In the liquid crystal panel **200**, the liquid crystal layer **203** is sandwiched between the TFT array substrate **201** and the opposing substrate **202** as shown in FIG. 3.

Further, the liquid crystal layer **203** is oriented by liquid crystal orientation films (not shown) formed on faces of the TFT array substrate **201** and the opposing substrate **202** which oppose to each other. The liquid crystal layer **203** is oriented such that the longitudinal direction of liquid crystal molecules extends along the direction of the xy face along which the TFT array substrate **201** and the opposing substrate **202** oppose to each other. Here, the liquid crystal layer **203** is configured using positive type liquid crystal.

In the present embodiment, the liquid crystal molecules of the liquid crystal layer **203** are oriented in a direction

different from the x direction and the y direction in the pixel region **PA** and inclined with respect to the y direction. In particular, the liquid crystal molecules of the liquid crystal layer **203** are oriented so as to be inclined further, for example, by an angle θ of 5° from an angle by which the branch portion **62ae** of the pixel electrode **62a** and the inclined portion **S1k** of the data line **S1** are inclined with respect to the y direction in the pixel region **PA**. In short, the liquid crystal layer **203** is subject to an orientation process by carry out a rubbing process setting the rubbing direction **RH** to an angle inclined, for example, by the angle θ of 5° with respect to the direction in which the branch portion **62ae** of the pixel electrode **62a** and the inclined portion **S1k** of the data line **S1** extend in the pixel region **PA** as shown in FIG. 4. It is to be noted that the angle θ of the inclination with respect to the direction in which the branch portion **62ae** of the pixel electrode **62a** and the inclined portion **S1k** of the data line **S1** extend in the pixel region **PA** preferably is within a range equal to or greater than 2° but equal to or smaller than 45° . Further, the first polarizing plate **206** is disposed on the light incoming side of the liquid crystal panel **200** such that the light transmission axis thereof corresponds to the orientation direction of the liquid crystal layer **203**. Further, the second polarizing plate **207** is disposed on the light outgoing side of the liquid crystal panel **200** such that the light transmission axis thereof extends perpendicularly to the light transmission axis of the first polarizing plate **206**.

As described above, in the present embodiment, the branch portion **62ae** of the pixel electrode **62a** extends in a direction different from the x direction and the y direction in the pixel region **PA** and inclined with respect to the y direction. Further, the liquid crystal molecules of the liquid crystal layer **203** are oriented similarly in a direction different from the x direction and the y direction in the pixel region **PA** and inclined with respect to the y direction.

Therefore, in the present embodiment, when a user wearing polarizing sunglasses including polarizing elements having a transmission axis coincident with the x direction or the y direction in the pixel region **PA** observes an image displayed in the pixel region **PA** through the polarizing elements, in any of the landscape state and the portrait state, the transmission axis along which light is transmitted through the polarizing elements is not different by a great amount from the transmission axis along which light is transmitted through the liquid crystal panel **200** and the second polarizing plate **207**. Therefore, according to the present embodiment, the visibility when the user visually recognizes an image displayed on the screen is improved.

Further, in the present embodiment, also the inclined portion **S1k** of the data line **S1** extends in a direction different from the x direction and the y direction in the pixel region **PA** and inclined with respect to the y direction similarly to the branch portion **62ae** of the pixel electrode **62a**. Here, the inclination angle of the branch portion **62ae** of the pixel electrode **62a** and the inclination angle of the inclined portion **S1k** of the data line **S1** coincide with each other, and the branch portion **62ae** of the pixel electrode **62a** and the inclined portion **S1k** of the data line **S1** extend along the same direction.

Therefore, according to the present embodiment, that a domain through which light is not transmitted is generated in the pixel region **PA** can be suppressed, and therefore, the light transmittance can be improved and the image quality can be improved.

Particularly, in the present embodiment, the inclined portion **S1k** of the data line **S1** and the branch portion **62ae**

of the pixel electrode **62a** extend in a direction inclined within an angular range equal to or greater than 2° but equal to or smaller than 45° with respect to the y direction in the pixel region PA. Where the inclination angle is smaller than 2° , the effects cannot sometimes be exhibited sufficiently, but where the inclination angle is greater than 45° , the light transmittance sometimes drops. Therefore, since the transmission axis along which light is transmitted through the polarizing element is not different by a great amount from the transmission axis along which light is transmitted through the liquid crystal panel **200** and the second polarizing plate **207**, this is more preferable. It is to be noted that, where the transmission axes are inclined at the angle of 45° with respect to the y direction in the pixel region PA, this is most preferable because the transmission axes extend along an intermediate position between the landscape orientation and the portrait orientation in which the pixel region PA extends perpendicularly to that in the landscape orientation.

Further, in the present embodiment, a plurality of gate lines **G1** are provided in a spaced relationship from each other in the x direction in the plural pixels P in such a manner as to define sub pixels of the plural pixels P juxtaposed in the x direction. Further, the plural data lines **S1** are not formed so as to be connected to the plural pixels P juxtaposed in a direction inclined with respect to the y direction but are provided in a spaced relationship from each other in the y direction in the plural pixels P in such a manner as to define the plural pixels P juxtaposed in the y direction.

In short, while the center of gravity of the pixel is maintained, the branch portion **62ae** of the pixel electrode **62a** and the inclined portion **S1k** of the data line **S1** are inclined in a direction different from the x direction and the y direction in the pixel region PA and inclined with respect to the y direction.

Therefore, according to the present embodiment, since it is unnecessary to separately carry out a signal process for converting a scanning signal and a data signal to allow display in accordance with the line sequential method, increase of the fabrication cost can be suppressed and improvement of the image quality can be implemented.

Embodiment 2

In the following, an embodiment 2 according to the present invention is described.

FIG. 7 is a plan view schematically showing part of a TFT array substrate **201** with regard to a pixel P provided in a pixel region PA in the embodiment 2 according to the present invention.

The present embodiment is different from the embodiment 1 in the pixel electrode **62a** and the data line **S1** as shown in FIG. 7. Except this, the present embodiment is similar to the embodiment 1. Therefore, description of common components is omitted.

In the pixel electrode **62a** in the present embodiment, the branch portion **62ae** is formed so as to be inclined by an angle greater than that in the case of the embodiment 1 with respect to the y direction as shown in FIG. 7. For example, the branch portion **62ae** is inclined by an angle of 30° .

Further, the data line **S1** in the present embodiment includes a bent portion **S1p** in addition to an inclined portion **S1k**, a horizontal portion **S1x** and a leader portion **S1h** as shown in FIG. 7.

Although the inclined portion **S1k** of the data line **S1** is formed similarly to that in the embodiment 1 as shown in FIG. 7, in the present embodiment, the inclined portion **S1k**

is inclined at the angle of 30° with respect to the y direction in the pixel region PA similarly to the branch portion **62ae**.

Further, the horizontal portion **S1x** of the data line **S1** and the leader portion **S1h** of the data line **S1** are formed similarly as in the embodiment 1 as shown in FIG. 7.

Further, as shown in FIG. 7, the bent portion **S1p** of the data line **S1** is bent like a staircase in the x direction and the y direction in such a manner as to be spaced away from another data line **S1** provided so as to correspond to a subpixel of an adjacent pixel P in the pixel region PA. In particular, the bent portion **S1p** extends to the upper side in the y direction from a left side end portion of the horizontal portion **S1x** in the pixel region PA, extends to the left side in the x direction from the point and is connected to a lower end portion of the inclined portion **S1k** of the data line **S1** provided for another pixel P positioned adjacent thereto.

FIG. 8 is a plan view schematically showing part of the TFT array substrate **201** with regard to a pixel P provided in the pixel region PA where the data line **S1** is formed without providing the bent portion **S1p** in the embodiment 2 according to the present invention.

In the case wherein the branch portion **62ae** of the pixel electrode **62a** is inclined by a great angle with respect to the y direction as in the present embodiment, where the data line **S1** is formed without providing the bent portion **S1p**, it becomes likely to contact with another data line **S1** provided so as to correspond to a subpixel of an adjacent pixel P in the pixel region PA. In this instance, a malfunction or the like occurs, and the image quality sometimes drops.

Therefore, in the present embodiment, the data line **S1** is formed so as to include the bent portion **S1p** as shown in FIG. 7.

Accordingly, in the present embodiment, it is possible to incline the inclined portion **S1k** of the data line **S1** and the branch portion **62ae** of the pixel electrode **62a** to an angle proximate to 45° with respect to the y direction in the pixel region PA. Further, since the restriction to the inclination angle disappears, the visibility can be improved further and it can be prevented readily that the data line **S1** contacts with another data line **S1**, occurrence of the fault that the image quality deteriorates can be prevented.

Embodiment 3

In the following, an embodiment 3 according to the present invention is described.

FIG. 9 is a plan view schematically showing part of a TFT array substrate **201** with regard to a pixel P provided in a pixel region PA in the embodiment 3 according to the present invention.

The present embodiment is different from the embodiment 1 in the pixel electrode **62a** and the data line **S1** as shown in FIG. 9. Except this, the present embodiment is similar to the embodiment 1. Overlapping description of common components is omitted.

In the data line **S1** in the present embodiment, the inclined portion **S1k** includes a first inclined portion **S1ka** and a second inclined portion **S1kb** as shown in FIG. 9.

Here, the first inclined portion **S1ka** extends in a direction different from the x direction and the y direction in the pixel region PA and inclined with respect to the y direction as shown in FIG. 9. This first inclined portion **S1ka** extends from a lower end portion to a central portion of the pixel P. Further, the first inclined portion **S1ka** preferably extends in a direction inclined within an angular range equal to or greater than 2° but equal to or smaller than 45° with respect

to the y direction in the pixel region PA. In the present embodiment, the first inclined portion *S1ka* is inclined at an angle of, for example, 25°.

Meanwhile, the second inclined portion *S1kb* extends in a direction different from the x direction and the y direction in the pixel region PA and different from the extension direction in which the first inclined portion *S1ka* extends as shown in FIG. 9. This second inclined portion *S1kb* extends from a central portion to an upper end portion of the pixel P. This second inclined portion *S1ka* preferably extends in a direction inclined within an angular range equal to or greater than 2° but equal to or smaller than 45° with respect to the y direction in the pixel region PA. In the present embodiment, the second inclined portion *S1kb* is inclined by an angle of, for example, 15°.

Further, in the pixel electrode *62a* in the present embodiment, the branch portion *62ae* is formed so as to extend along a direction along which the first inclined portion *S1ka* and the second inclined portion *S1kb* of the inclined portion *S1k* extend as shown in FIG. 9. In short, the branch portion *62ae* is inclined, within a range from a lower end portion to a central portion of the pixel P, at an angle of, for example, 25° with respect to the y direction similarly to the first inclined portion *S1ka*. Then, the branch portion *62ae* is inclined, within a range from a central portion to an upper end portion of the pixel P, at an angle of, for example, 15° with respect to the y direction similarly to the second inclined portion *S1kb*.

Further, in the present embodiment, the liquid crystal layer *203* is subject to an orientation process by carrying out a rubbing process setting the rubbing direction to a direction inclined by an angle of 5° in absolute value with respect to the extension direction of the first inclined portion *S1ka* and the extension direction of the second inclined portion *S1kb* as shown in FIG. 9. In short, the liquid crystal layer *203* is subject to an orientation process by carrying out a rubbing process so that the angle θ_1 between the extension direction of the first inclined portion *S1ka* and the rubbing direction and the angle θ_2 between the extension direction of the second inclined portion *S1kb* and the rubbing direction may be equal to each other (in short, $\theta_1 = \theta_2$).

By providing the components in such a manner as described above, in the present embodiment, the liquid crystal panel *200* is formed so as to have a dual domain structure.

As described above, the liquid crystal panel *200* in the present embodiment has a dual domain structure wherein two domains are included in a pixel P, and the inclined portion *S1k* of the data line *S1* includes the first inclined portion *S1ka* and the second inclined portion *S1kb* whose inclination angles with respect to the y direction are different from each other and the first inclined portion *S1ka* and the second inclined portion *S1kb* are provided so as to correspond to one pixel P in the pixel region PA. Further, the branch portion *62ae* of the pixel electrode *62a* is formed such that it extends along a direction along which the first inclined portion *S1ka* and the second inclined portion *S1kb* extend.

Therefore, since, in the present embodiment, that a domain through which light is not transmitted appears in the pixel region PA can be suppressed similarly as in the embodiment 1, the light transmittance can be improved and the image quality can be improved.

Embodiment 4

In the following, an embodiment 4 according to the present invention is described.

FIG. 10 is a plan view schematically showing part of a TFT array substrate *201* with regard to a pixel P provided in a pixel region PA in the embodiment 4 according to the present invention. FIG. 10 shows two pixels P provided in an even-numbered row and an odd-numbered row among the pixels P juxtaposed in the y direction.

The present embodiment is different from the embodiment 1 in a pixel electrode *62a* and a data line *S1* as shown in FIG. 10. Except this, the present embodiment is similar to the embodiment 1. Therefore, overlapping description of common components is omitted.

In the data line *S1* in the present embodiment, the inclined portion *S1k* of the data line *S1* includes a first inclined portion *S1ka* and a second inclined portion *S1kb* as shown in FIG. 10.

Here, the first inclined portion *S1ka* is provided in those of the pixels P juxtaposed in the y direction which belong to one of an even-numbered row and an odd-numbered row. For example, the first inclined portion *S1ka* is provided so as to correspond to an odd-numbered row. Further, the first inclined portion *S1ka* extends in a direction different from the x direction and the y direction in the pixel region PA and inclined with respect to the y direction. This first inclined portion *S1ka* extends, for example, from a lower end portion to an upper end portion of a pixel P in an odd-numbered row. Further, the first inclined portion *S1ka* preferably extends in a direction inclined within an angular range equal to or greater than 2° but equal to or smaller than 45° with respect to the y direction in the pixel region PA. In the present embodiment, the first inclined portion *S1ka* is inclined at an angle of, for example, 25°.

Meanwhile, the second inclined portion *S2kb* is provided on those of the pixels P juxtaposed in the y direction which belong to one of an even-numbered row and an odd-numbered row as shown in FIG. 10. For example, where the first inclined portion *S1ka* is provided so as to correspond to an odd-numbered row, the second inclined portion *S2kb* is provided so as to correspond to an even-numbered row. Further, the second inclined portion *S1kb* extends in a direction different from the x direction and the y direction in the pixel region PA and different from the extension direction in which the first inclined portion *S1ka* described above extends. This second inclined portion *S1kb* extends, for example, from a lower end portion to an upper end portion of a pixel P in an even-numbered row. Further, this second inclined portion *S1kb* preferably extends in a direction inclined within an angular range equal to or greater than 2° but equal to or smaller than 45° with respect to the y direction in the pixel region PA. In the present embodiment, the second inclined portion *S1kb* is inclined at an angle of, for example, 15°.

Further, in the pixel electrode *62a* of the present embodiment, the branch portion *62ae* is formed so as to extend along the direction in which the first inclined portion *S1ka* and the second inclined portion *S1kb* of the inclined portion *S1k* extend. In particular, the branch portion *62ae* is inclined, in a pixel P which corresponds to an odd-numbered row from among a plurality of pixels P juxtaposed in the y direction, at an angle of, for example, 25° with respect to the y direction similarly to the first inclined portion *S1ka*. Further, the branch portion *62ae* is inclined, in a pixel P which corresponds to an even-numbered row from among the plural pixels P juxtaposed in the y direction, at an angle of, for example, 15° with respect to the y direction similarly to the second inclined portion *S1kb*.

Further, in the present embodiment, the liquid crystal layer *203* is subject to an orientation process by carrying out

a rubbing process in a direction inclined at an angle of 5° in absolute value with respect to the extension direction of the first inclined portion *S1ka* and the extension direction of the second inclined portion *S1kb*. In short, the liquid crystal layer **203** is subject to an orientation process by carrying out a rubbing process so that the angle θ_1 between the extension direction of the first inclined portion *S1ka* and the rubbing direction and the angle θ_2 between the extension direction of the second inclined portion *S1kb* and the rubbing direction may be equal to each other (in short, $\theta_1 = \theta_2$).

By providing the components in such a manner as described above, in the present embodiment, the liquid crystal panel **200** is formed so as to have a pseudo dual domain structure.

As described above, the liquid crystal panel **200** in the present embodiment has a pseudo dual domain structure wherein domains are different between two different pixels P adjacent each other, and the inclined portion *S1k* of the data line *S1* includes the first inclined portion *S1ka* and the second inclined portion *S1kb* whose inclination angles with respect to the y direction are different from each other. Further, the first inclined portion *S1ka* and the second inclined portion *S1kb* are disposed such that they are juxtaposed alternately with each other in a plurality of pixels P juxtaposed in the y direction in the pixel region PA. Further the branch portion *62ae* of the pixel electrode *62a* is formed such that it extends in the direction in which the first inclined portion *S1ka* and the second inclined portion *S1kb* extend.

Therefore, since, in the present embodiment, that a domain through which light is not transmitted appears in the pixel region PA can be suppressed similarly as in the embodiment 1, the light transmittance can be improved and the image quality can be improved.

In carrying out the present invention, the present invention is not limited to the embodiments described above, but various modified forms can be adopted.

For example, while, in the embodiments described above, the gate line *G1* is formed so as to extend in the x direction while the data line *S1* is not formed so as to extend in the y direction but is formed in an inclined relationship, the present invention is not limited to this. Similar effects can be achieved also where, for example, the gate line *G1* is not formed so as to extend in the x direction but is formed in an inclined relationship while the data line *S1* is formed so as to extend along the y direction. Also where the gate line *G1* is formed in an inclined relationship with respect to the x direction and the data line *S1* is formed in an inclined relationship with respect to the y direction, similar effects can be achieved.

Further, for example, in the embodiments described above, the branch portion *62ae* of the pixel electrodes *62a* is formed so as to extend along the direction along which the inclined portion *S1k* of the data line *S1* extends. In short, it is described that the inclination angle of the inclined portion *S1k* of the data line *S1* and the inclination angle of the branch portion *62ae* of the pixel electrode *62a* are made coincide with each other. However, the present invention is not limited to this, and the inclination angle of the data line *S1* and the inclination angle of the branch portion *62ae* of the pixel electrode *62a* may not coincide with each other. However, in order to suppress appearance of a domain through which light is not transmitted, it is preferable to make the inclination angle of the inclined portion *S1k* of the data line *S1* and the inclination angle of the branch portion *62ae* of the pixel electrode *62a* coincide with each other. Further, while, in the embodiments described above, positive type liquid crystal is used for the liquid crystal layer

203, the present invention is not limited to this, and negative type liquid crystal may be used for configuration of the liquid crystal layer **203**. In this instance, the present invention can be applied by reversing the orientation axis by 90° . For example, in FIG. 4, a direction, for example, inclined downwardly by an angle of 5° with respect to the x direction is used as the orientation direction (rubbing direction).

Further, for example, in the present embodiment, the pixel switching element **31** described above is configured as a thin film transistor of the bottom gate type, the present invention is not limited to this. For example, the pixel switching element **31** may be configured using a thin film transistor of the top gate type.

Further, for example, in the embodiments described above, the present invention is applied to the FFS type, the present invention is not limited to this. For example, the present invention can be applied, for example, to the IPS (In-Plane-Switching) type.

Further, the liquid crystal display apparatus **100** of the present embodiment can be applied as a part of various electronic apparatus. For example, the liquid crystal display apparatus **100** can be applied to such electronic apparatus as a digital still camera and a video camera.

It is to be noted that, in the embodiments described above, the liquid crystal display apparatus **100** corresponds to the display apparatus of the present invention. Further, in the embodiments described above, the liquid crystal panel **200** corresponds to the display panel in the present invention. Further, in the embodiments described above, the liquid crystal layer **203** corresponds to the liquid crystal layer in the present invention. Further, in the embodiments described above, the pixel electrode *62a* corresponds to the pixel electrode in the present invention. Further, in the embodiments described above, the trunk portion *62ak* corresponds to the trunk portion in the present invention. Further, in the embodiments described above, the branch portion *62ae* corresponds to the branch portion in the present invention. Further, in the embodiments described above, the common electrode *62b* corresponds to the common electrode in the present invention. Further, in the embodiments described above, the gate line *G1* corresponds to the first wire line in the present invention. Further, in the embodiments described above, the data line *S1* corresponds to the second wire line in the present invention. Further, in the embodiments described above, the inclined portion *S1k* corresponds to the inclined portion in the present invention. Further, in the embodiments described above, the first inclined portion *S1ka* corresponds to the first inclined portion in the present invention. Further, in the embodiments described above, the second inclined portion *S1kb* corresponds to the second inclined portion in the present invention. Further, in the embodiments described above, the x direction corresponds to the first direction in the present invention. Further, in the embodiments described above, the y direction corresponds to the second direction in the present invention. Further, in the embodiments described above, the pixel region PA corresponds to the pixel region in the present invention. Furthermore, in the embodiments described above, the pixel P corresponds to the pixel in the present invention.

What is claimed is:

1. A liquid crystal display apparatus comprising:
 - a liquid crystal panel having a pixel region in which a plurality of pixels are provided in a matrix in a first direction and a second direction perpendicular to the first direction;
 - a pixel electrode and a common electrode that apply a transverse electric field to a liquid crystal layer such

that an image is displayed in said pixel region with light emitted through said liquid crystal layer;

a plurality of first wire lines disposed in a spaced relationship from each other in the second direction with regard to the plurality of pixels so as to define a plurality of pixels juxtaposed in the second direction;

a plurality of second wire lines disposed in a spaced relationship from each other in the first direction with regard to the plurality of pixels so as to define a plurality of pixels juxtaposed in the first direction; and

a color filter layer comprising a red filter layer a green filter layer and a blue filter layer juxtaposed with each other in the first direction,

wherein,

(a) each of said second wire lines includes an inclined portion extending in a direction different from the first and second directions in said pixel region and inclined with respect to the second direction,

(b) said pixel electrode includes (1) two trunk portions extending in the first direction, (2) a plurality of branch portions extending in a third direction in said pixel region, each of the plurality of branch portions inclined in a same direction, and (3) each end of the plurality of branch portions connected to a respective trunk portion,

(c) each of said inclined portion and said branch portions is inclined in the same direction with respect to the second direction,

(d) the common electrode is formed over an entire display region including all of the pixel regions,

(e) an overall shape of each of the red filter layer, the green filter layer, and the blue filter layer extends in a direction inclined with respect to the second direction and is aligned with the branch portions, and

(f) the inclined portion of the second wire is formed on the side opposite to the pixel electrode with respect to the common electrode in a direction of thickness of the liquid crystal panel.

2. The liquid crystal display apparatus according to claim 1, wherein the branch portions extend parallel to the inclined portions of said second wire lines.

3. The liquid crystal display apparatus according to claim 2, wherein each of the inclined portions of said second wire lines and the branch portions extends in a direction inclined

within an angular range equal to or greater than 2° but equal to or smaller than 45° with respect to the second direction in said pixel region.

4. The liquid crystal display apparatus according to claim 3, wherein each of the inclined portions of said second wire lines and the branch portions extends in a direction inclined at the angle of 45° with respect to the second direction in said pixel region.

5. The liquid crystal display apparatus according to claim 4, wherein each of the second wire lines includes a bent portion bent like a staircase in the first direction and the second direction so as to be spaced away from another second wire line provided so as to correspond to another adjacent pixel in said pixel region.

6. The liquid crystal display apparatus according to claim 2, wherein each of the inclined portions of said second wire lines includes:

a second inclined portion extending in a third direction different from the first and second directions; and

a third inclined portion extending in a fourth direction different from the first, second and third directions,

wherein,

said second inclined portion and said third inclined portion are formed so as to correspond to one pixel in said pixel region.

7. The liquid crystal display apparatus according to claim 2, wherein each of the inclined portions of said second wire lines includes:

a second inclined portion extending in a third direction different from the first and second directions; and

a third inclined portion extending in a fourth direction different from the first, second and third directions,

wherein,

said second inclined portion and said third inclined portion are disposed alternately in the plurality of pixels juxtaposed in the second direction in said pixel region.

8. The liquid crystal display apparatus according to claim 1, wherein one of said trunk portions is located at an end portion of said pixel electrode and is shifted in the first direction with respect to the other trunk portion located at the other end portion of said pixel electrode.

9. The liquid crystal display apparatus according to claim 1, wherein said pixel electrode has a shape of a parallelogram whose angles are not a right angle.

* * * * *

专利名称(译)	液晶显示装置		
公开(公告)号	US10310337	公开(公告)日	2019-06-04
申请号	US15/961979	申请日	2018-04-25
[标]申请(专利权)人(译)	株式会社日本显示器		
申请(专利权)人(译)	日本展示INC.		
当前申请(专利权)人(译)	日本展示INC.		
[标]发明人	OGURA KENJI TANAKA HIRONAO YAMAGUCHI HIDEMASA		
发明人	OGURA, KENJI TANAKA, HIRONAO YAMAGUCHI, HIDEMASA		
IPC分类号	G09G3/36 G02F1/1362 G02F1/1337 G02F1/1343		
CPC分类号	G02F1/134336 G02F1/133784 G02F1/136286 G02F1/134363 G02F2001/134372		
代理机构(译)	DENTONS美国律师事务所		
优先权	PCT/JP2009/056274 2009-03-27 WO 2008085497 2008-03-28 JP		
其他公开文献	US20180239202A1		
外部链接	Espacenet		

摘要(译)

像素电极的分支部分和数据线的倾斜部分中的每一个在像素区域中沿与x方向和y方向不同的方向延伸并且相对于y方向倾斜。此外，液晶层在像素区域中在与x方向和y方向不同的方向上取向，并且相对于y方向倾斜。

