

(12) **Patent Application Publication**
KIM et al.

(10) **Pub. No.: US 2015/0362814 A1**
(43) **Pub. Date: Dec. 17, 2015**

Publication Classification

(51) **Int. Cl.**
G02F 1/1362 (2006.01)
G02F 1/1345 (2006.01)
G02F 1/1368 (2006.01)

(52) U.S. Cl.
CPC **G02F 1/136286** (2013.01); **G02F 1/1368**
(2013.01); **G02F 1/1345** (2013.01)

(57) **ABSTRACT**

A liquid crystal display device for improving picture quality includes a common electrode formed on a first substrate, gate lines and data lines formed on a second substrate bonded to the first substrate by a sealing member with liquid crystals disposed therebetween, thin film transistors connected to the gate lines and to the data lines, pixel electrodes formed in subpixel regions, each pixel electrode having a long side in a direction of the gate lines and having a short side in a direction of the data lines fanout lines for supplying a driving signals from the driving chips to the data lines, first conductive spacers formed between the fanout lines connected to different driving chips, for supplying a common voltage to the common electrode, and second conductive spacers formed between the fanout lines connected to the same driving chip, for supplying the common voltage to the common electrode.

(63) Continuation of application No. 14/058,853, filed on Oct. 21, 2013, now Pat. No. 9,116,401, which is a continuation of application No. 13/585,618, filed on Aug. 14, 2012, now Pat. No. 8,564,516, which is a continuation of application No. 12/360,363, filed on Jan. 27, 2009, now Pat. No. 8,259,047, which is a continuation of application No. 11/527,115, filed on Sep. 26, 2006, now Pat. No. 7,495,737.

Feb. 6, 2006 (KR) 10-2006-0011110

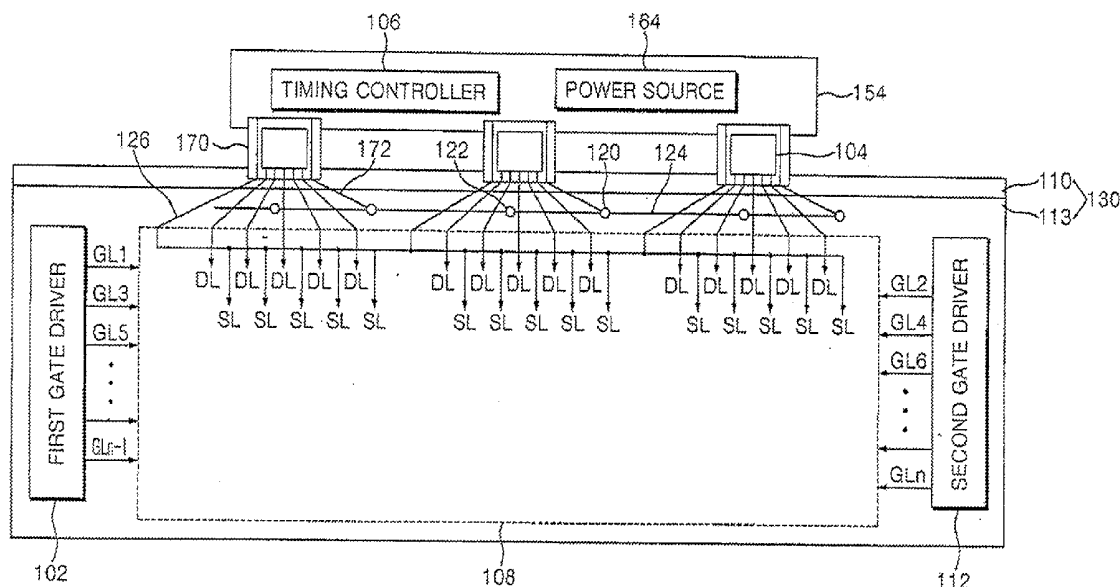


FIG. 1

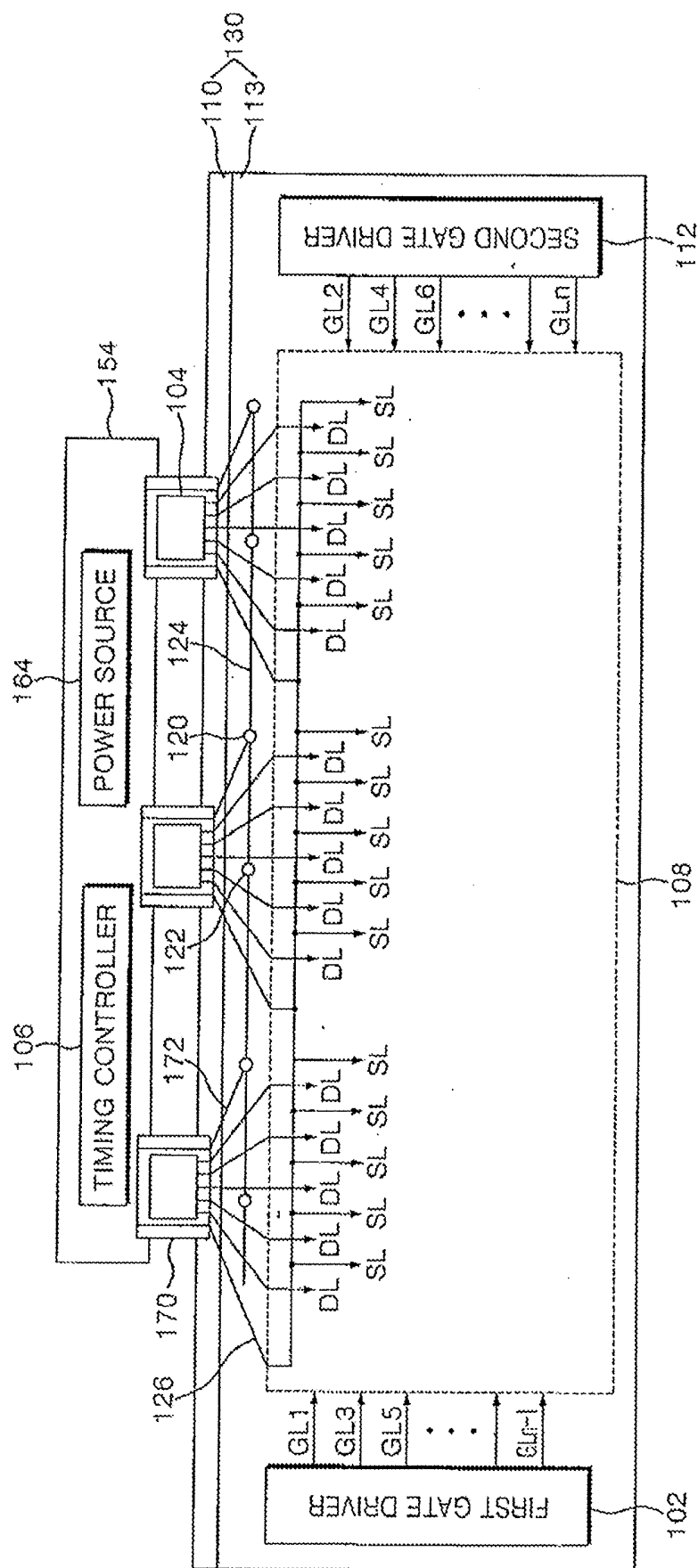


FIG. 2

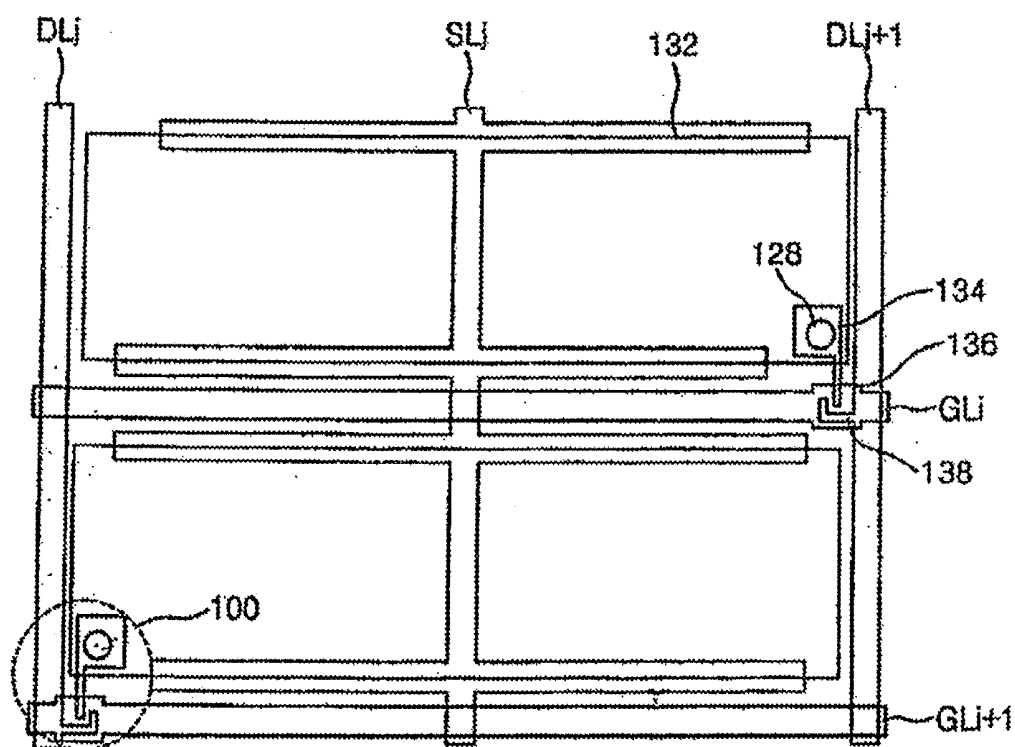


FIG. 3

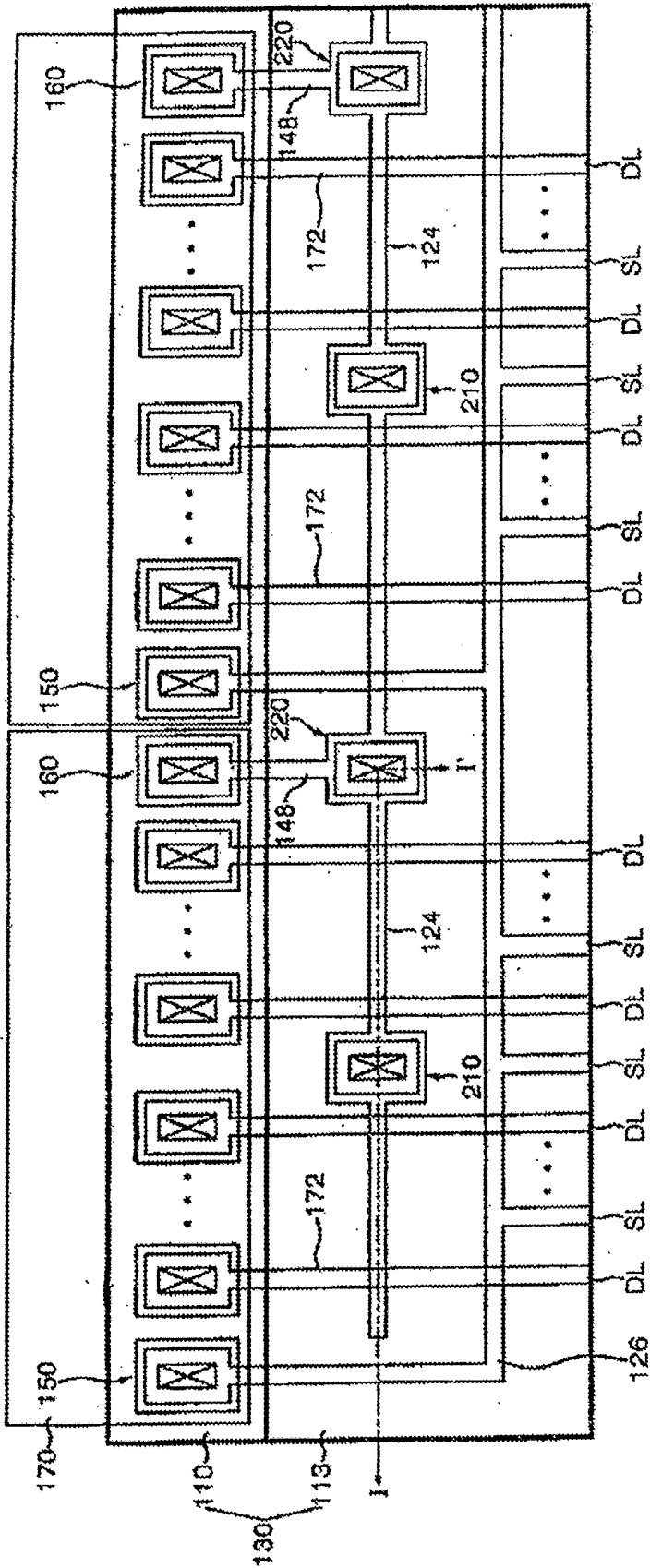


FIG. 4A

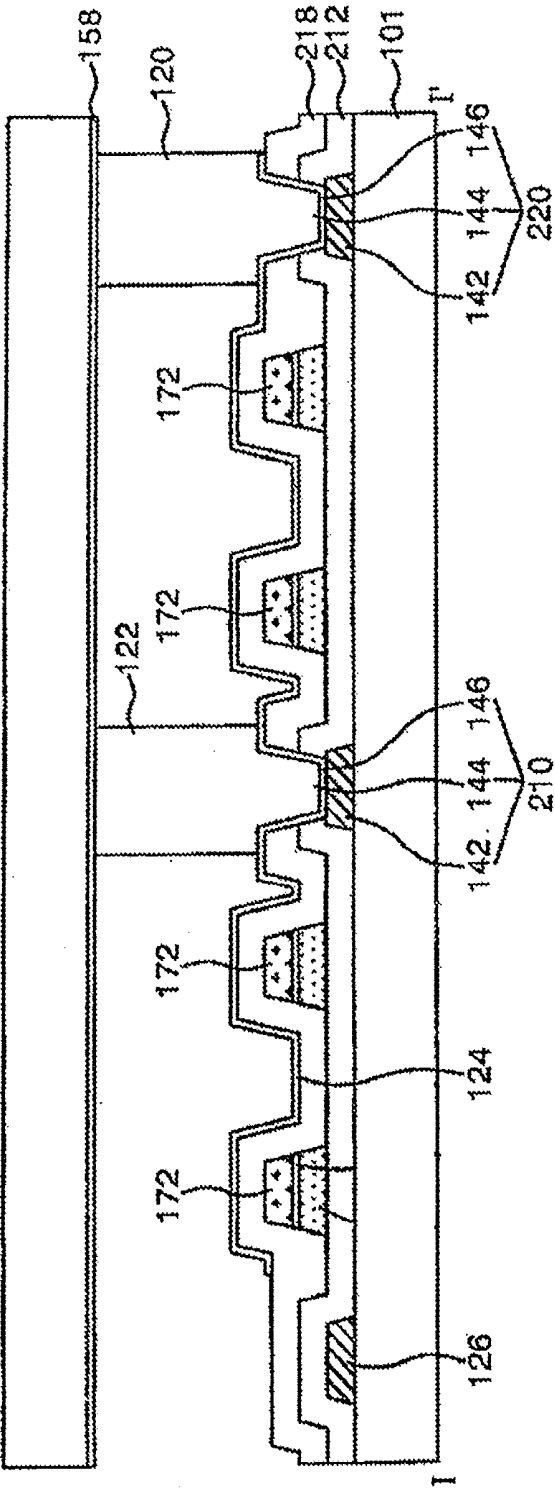


FIG. 6

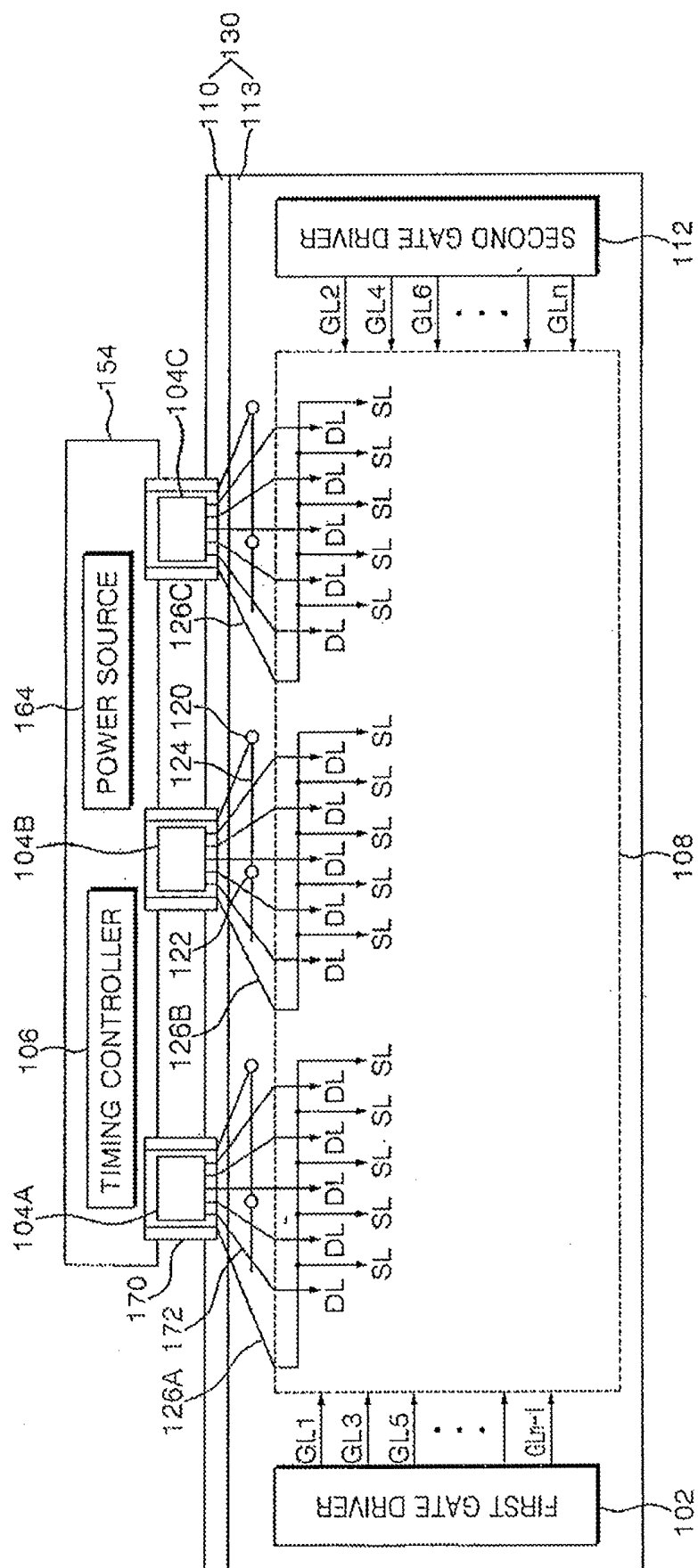


FIG. 7

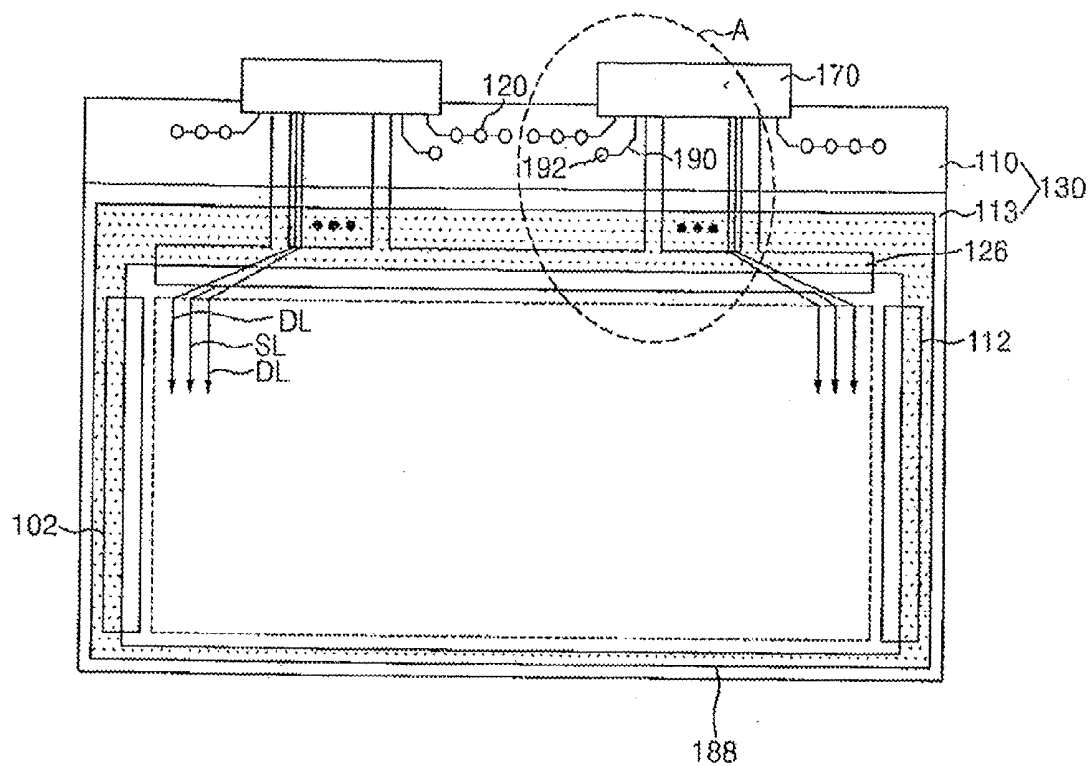


FIG. 8

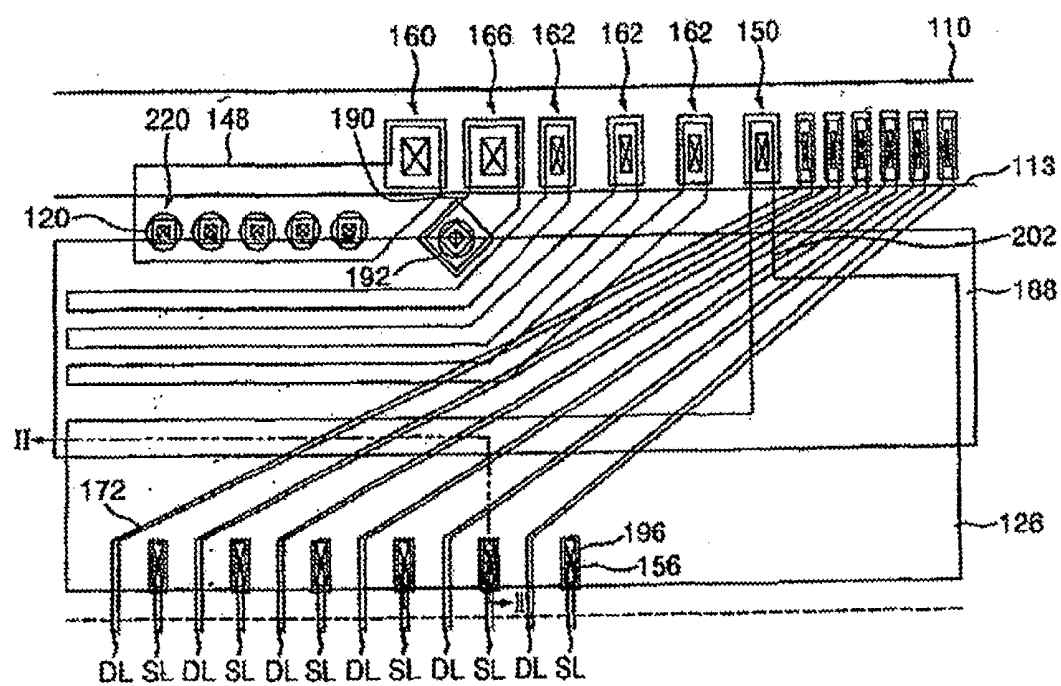
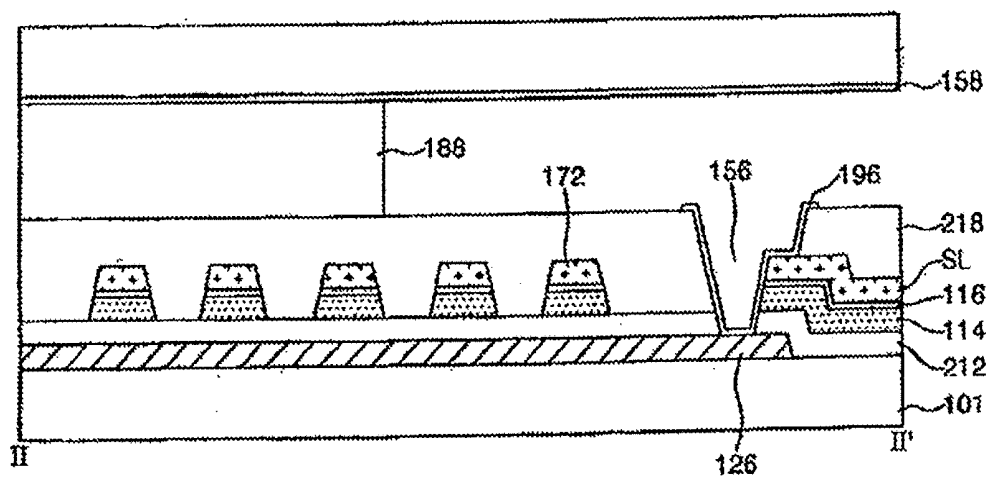


FIG. 9



HORIZONTAL STRIPE LIQUID CRYSTAL DISPLAY DEVICE

CROSS REFERENCE TO RELATED APPLICATION

[0001] This application is a continuation of U.S. patent application Ser. No. 14/058,853, filed on Oct. 21, 2013, which is a continuation of U.S. patent application Ser. No. 13/585,618, filed on Aug. 14, 2012, now U.S. Pat. No. 8,564,516, which is a continuation of U.S. patent application Ser. No. 12/360,363, filed on Jan. 27, 2009, now U.S. Pat. No. 8,259,047, which is a continuation of U.S. application Ser. No. 11/527,115 filed on Sep. 26, 2006, now U.S. Pat. No. 7,495,737, which claims priority from Korean Patent Application No. 10-2006-0011110, filed on Feb. 6, 2006, the disclosures of which are herein incorporated by reference in their entirety.

BACKGROUND OF THE INVENTION

[0002] 1. Field of the Invention

[0003] The present invention relates to a liquid crystal display device, and more particularly, to a liquid crystal display device having horizontal stripes of same-color subpixels using the same gate lines, and capable of improving picture quality by preventing crosstalk.

[0004] 2. Description of the Related Art

[0005] A liquid crystal display ("LCD") device displays an image through a pixel matrix using electro-optical properties of liquid crystals. Each pixel (three colored subpixels) of the LCD device represents a desired color by a combination of red, green and blue subpixels controlling light transmittance by varying the arrangement of the liquid crystals in response to a data signal. Each subpixel contains liquid crystals that are controlled by a voltage difference (electric field) applied to a pixel electrode as a data signal supplied through a thin film transistor ("TFT") (a switching element) and a common voltage supplied to a common electrode. The TFT is turned ON by a gate-ON voltage supplied via a gate line, thus passing the data signal supplied via a data line to the pixel electrode, and is turned OFF by a gate-OFF voltage supplied via the gate line. The gate-OFF voltage applied to the gate line should be kept stable so that the data signal charged to the pixel electrode can be controlled.

[0006] However, a ripple phenomenon occurs such that the common voltage swings along the data signal supplied to the data line(s) due to a coupling by a parasitic capacitance between the data line(s) and the common electrode overlapping each other with the liquid crystals disposed therebetween, resulting in crosstalk. Especially when a specific image data pattern having a severely biased polarity is displayed on a screen, the crosstalk becomes more severe and the ripple component of the common voltage is increased.

SUMMARY OF THE INVENTION

[0007] The R, G and B subpixels of each pixel are arranged in a vertical sequence and are driven by the same data line, and subpixels of the same color (of different pixels) are horizontally arranged in a horizontal stripe and are driven by the same gate line. The LCD device reduces the number of data lines to one third compared to a conventional "vertical stripe" LCD device.

[0008] An aspect of the present invention provides an LCD device capable of improving picture quality by preventing crosstalk.

[0009] An exemplary embodiment of the invention provides a liquid crystal display (LCD) device. The LCD device includes a common electrode formed on a first substrate, gate lines and data lines formed on a second substrate bonded to the first substrate by a sealing member with liquid crystals disposed therebetween and the data lines and gate lines intersect each other, thin film transistors connected to the gate lines and to the data lines, pixel electrodes formed in subpixel regions each having a long side in the direction of the gate lines and having a short side in the direction of the data lines and connected to the thin film transistors, driving chips mounted on circuit films, for driving the data lines, fanouts (fanout lines) for supplying a driving signal from the driving chips to the data lines, first conductive spacers (first conductive spacers, extending and conducting between the first and second substrates) formed between the fanout lines connected to different driving chips, for supplying a common voltage to the common electrode, and second conductive spacers (first conductive spacers, extending and conducting between the first and second substrates) formed between the fanout lines connected to the same driving chip, for supplying the common voltage to the common electrode.

[0010] The LCD device further includes a common voltage supply line formed perpendicular to the fanout lines, for connecting the first and second conductive spacers to each other.

[0011] The common voltage supply line is formed in plural numbers so that it can be separated according to the fanout lines connected to the same driving chip.

[0012] Different common voltages are supplied to different (separate) common electrode corresponding to regions corresponding to the fanout lines.

[0013] The second conductive spacers are adjacent to the fanout line positioned at the center among the fanout lines connected to the same driving chip.

[0014] The LCD device further includes a plurality of storage lines formed along the short side via the subpixel region.

[0015] The LCD device further includes storage supply lines formed according to the fanout lines connected to the same driving chip and connected in common to the storage lines.

[0016] The storage supply lines supply different storage voltages according to storage lines positioned in regions corresponding to the fanout lines connected to the same driving chip.

[0017] The storage supply lines perpendicular to the fanout lines are formed to overlap the sealing member.

[0018] The sealing member includes a soft spacer.

[0019] The LCD device further includes a passivation layer formed of an organic insulating layer to cover the fanout lines with a thickness capable of buffering pressure of the sealing member.

[0020] Another exemplary embodiment of the invention provides an a liquid crystal display (LCD) device according to the present invention, the LCD device includes a common electrode formed on a first substrate, a gate line and a data line formed on a second substrate bonded to the first substrate by a sealing member with liquid crystals disposed therebetween and the data lines intersect each other, a thin film transistor connected to the gate line and to the data line, a pixel electrode formed in a subpixel region having a long side in a direction of the gate line and having a short side in a direction of the data line and connected to the thin film transistor, a plurality of storage lines formed along the short side via the subpixel

region, and a storage supply line that is connected in common to the plurality of storage lines and overlaps at least a part of the sealing member.

[0021] The LCD device further includes a conductive spacer formed on the second substrate, for supplying a common voltage to the common electrode, and a feedback dot adjacent to the conductive spacer, for feeding back the common voltage.

[0022] A compensation signal having a phase opposite to the common voltage fed back through the feedback dot is supplied to the storage line.

[0023] The storage supply line is formed to have a width ranging from 4 mm to 6 mm.

BRIEF DESCRIPTION OF THE DRAWINGS

[0024] The above and other features of the present invention will become more apparent to persons skilled in the art from the following detailed description when taken in conjunction with the accompanying drawings, in which:

[0025] FIG. 1 is a schematic view of an LCD device according to a first exemplary embodiment of the present invention;

[0026] FIG. 2 is a plan view illustrating two subpixels in a TFT substrate of the LCD device of FIG. 1;

[0027] FIG. 3 is a plan view illustrating pads connected to a circuit film and to first and second conductive spacers in the LCD device in FIG. 1;

[0028] FIGS. 4A and 4B are alternative cross-sectional views taken along section line I-I' in FIG. 3 illustrating alternative embodiments of an upper pad electrode 146 connecting the first and second conductive spacers;

[0029] FIG. 5 is a schematic view of an LCD device according to a second exemplary embodiment of the present invention;

[0030] FIG. 6 is a schematic view of an LCD device according to a third exemplary embodiment of the present invention;

[0031] FIG. 7 is a schematic view of an LCD device according to a fourth exemplary embodiment of the present invention;

[0032] FIG. 8 is an enlarged plan view illustrating a portion 'A' in FIG. 7; and

[0033] FIG. 9 is a cross-sectional view illustrating the LCD device of FIG. 7 taken along section line II-II' in FIG. 8.

DETAILED DESCRIPTION OF THE PREFERRED EMBODIMENTS

[0034] FIG. 1 is a schematic view of a liquid crystal display (LCD) device according to a first exemplary embodiment of the present invention.

[0035] Referring to FIG. 1, the LCD device includes an LCD panel 130 in which first and second gate drivers 102 and 112 for driving gate lines GL1 to GLn of the image display unit (pixel array) 108 are formed, circuit films (e.g., tape carrier packages or chip-on-films) 170 have data driving chips 104 mounted thereon for driving data lines DL of the image display unit (pixel array) 108 and are connected between a printed circuit board (PCB) 154 and the LCD panel 130. A timing controller 106 is mounted on the PCB 154.

[0036] The first and second gate drivers 102 and 112 are located at opposite sides of the image display unit 108 and respectively drive the odd and even gate lines among GL1 to GLn. For example, the first gate driver 102 drives odd gate lines GL1, GL3, . . . , GLn-1 and the second gate driver 112 drives even gate lines GL2, GL4, . . . , GLn. The first and

second gate drivers 102 and 112 are comprised of shift registers (e.g., including a plurality of thin film transistors, TFTs) and are mounted in a non-display region i.e., outside of the image display unit (pixel array) 108. Therefore, the first and second gate drivers 102 and 112 may be formed together with pixel switching TFTs and a plurality of signal lines DL, GL and SL of the image display unit (pixel array) 108. The first and second gate drivers 102 and 112 sequentially drive the gate lines GL1 to GLn of the image display unit 108 by using gate control signals received from the timing controller 106 and gate-ON and gate-OFF voltages received from a power source 164.

[0037] A plurality of data driving chips 104 for separately driving sets of the data lines DL of the image display unit 108 are respectively mounted on the plurality of circuit films 170. The circuit films 170 are attached to the LCD panel 130 and to the PCB 154 through anisotropic conductive films. Anisotropic Conductive Film (ACF) is a material used for interconnecting LCD drive-use semiconductor chip-mounted tape carrier package (TCP) circuits and the electrodes of LCD panels, as well as for connecting TCP circuits to printed wiring board circuits. Tape carrier packages or chip-on-films are used as the circuit films 170 on which the data driving chips 104 are mounted. The data driving chips 104 may be directly mounted on a TFT substrate 110 of the LCD panel 130 by using a chip-on-glass technique without using the circuit films 170. The data driving chips 104 convert digital data from the timing controller 106 into an analog data signals by using a gamma voltage from a gamma voltage generator (or gray voltage generator) (not shown) and supply the analog data signals to the data lines DL in synchronization with each horizontal period during which the gate lines GL1 to GLn of the image display unit 108 are driven.

[0038] The timing controller 106 mounted on the PCB 154 controls the data driving chips 104 and the first and second gate drivers 102 and 112. A data signal and a plurality of data control signals from the timing controller 106 are supplied to the data driving chips 104 via the PCB 154 and via the circuit films 170, and a plurality of gate control signals from the timing controller 106 are supplied to the first and second gate drivers 102 and 112 via the PCB 154, via the circuit films 170, and via the TFT substrate 110 of the LCD panel 130.

[0039] The image display unit (pixel array) 108 of the LCD panel 130 displays images by activating a plurality of pixels arrayed in a matrix format, each pixel consisting of red (R), green (G), and blue (B) subpixels. The image display unit (pixel array) 108 is formed by bonding the TFT substrate 110, on which TFTs are formed (to switchably control each of the R, G and B subpixels), to a color filter substrate 113 where color filters are formed (for each of the R, G and B subpixels), with liquid crystal molecules disposed therebetween. The R, G and B subpixels are arranged in a vertical sequence and subpixels of the same color are horizontally arranged in a horizontal stripe. By the vertical arrangement of the R, G and B subpixels on the image display unit (pixel array) 108, the LCD device reduces the number of data lines DL to one third of the data lines of a comparable LCD device in which the R, G and B subpixels are alternated in a horizontal direction. As a result, the number of data driving chips 104 for driving the data lines DL is reduced by two thirds. Although the number of the gate drivers 102 and 112 increases (because the number of gate lines GL1 to GLn increases) as the number of data lines DL decreases (due to the vertical arrangement of the R, G and B subpixels), since the circuit configuration of the gate

drivers **102** and **112** is simpler than that of the data driving chips **104**, manufacturing cost can be reduced. Since the gate drivers **102** and **112** are mounted within the TFT substrate **110** using an amorphous silicon thin film, the manufacturing cost of the LCD device having fewer data lines, and more gate lines according the embodiments of the present invention can be greatly reduced compared to that of the conventional LCD device.

[0040] FIG. 2 is a plan view illustrating two subpixels in a TFT substrate of the LCD device of FIG. 1.

[0041] Each subpixel in the image display unit (pixel array) **108** on the TFT substrate **110** includes, as shown in FIG. 2, a (horizontally elongated rectangular) pixel electrode **132** formed in a subpixel region defined by an intersection of a gate line GL and of a data line DL, and a thin film transistor (TFT) **100** connected between the gate line GL, the data line DL and the pixel electrode **132**.

[0042] The gate line GL and the data line DL are formed perpendicular to each other on an insulating substrate with a gate insulating layer disposed therebetween. Each subpixel region is defined by an intersection of the gate line GL and the data line DL. A storage line SL is formed on the insulating substrate in parallel with the data line DL to pass through the center of each subpixel (e.g., along a short side of the subpixel).

[0043] The TFT **100** includes a gate electrode **136** connected to the gate line GL, a source electrode **138** connected to the data line DL, a drain electrode **134** connected to the pixel electrode **132**, and a semiconductor layer connected to the source electrode **138** and to the drain electrode **134**. The semiconductor layer includes an active layer for forming a channel between the source electrode **138** and the drain electrode **134**, and an ohmic contact layer for an ohmic contact of the active layer, the source electrode **138** and the drain electrode **134**. The channel in the semiconductor layer is formed over a gate electrode **136**. The semiconductor layer is formed under the data line DL and the storage line SL. The TFTs **100** formed in two subpixel regions that are vertically adjacent to each other (as shown in FIG. 2) are respectively connected to right and left data lines which have opposite polarity. The connecting directions of the TFTs connected to the data lines DL alternate along a vertical direction. For example, the TFTs **100** of odd horizontal lines connected to the odd gate lines GLi are connected to the pixel electrodes **132** on the left of the data line DLj+1. In other words, the subpixels in odd horizontal lines have TFTs **100** connected to the data lines DLj+1 on the right side of the subpixel. The TFTs **100** of even horizontal lines connected to the even gate lines GLi+1 are connected to the pixel electrodes **132** on the right of the data line DLj. In other words, the subpixels in even horizontal lines have TFTs **100** connected to the data lines DLj on the left side of the subpixel. Accordingly, the polarity of the data signal supplied to each of the data lines DLj to DLj+1 is opposite to that of the data signal supplied to its adjacent data lines DL. Even if the polarity of the data signal is inverted only on a frame basis, the pixel electrode **132** is always charged by the data signal having a polarity opposite to the polarity of horizontally and vertically adjacent pixel electrodes **132** (e.g., is driven by dot inversion).

[0044] The pixel electrode **132** is connected to the drain electrode **134** of the TFT **100** through a contact hole **128** (penetrating a passivation layer). An electric field is formed between the pixel electrode **132** and a common electrode at the color filter substrate **113**, to arrange liquid crystal mol-

ecules therebetween. The pixel electrode **132** overlaps the storage line SL with at least one insulating layer disposed therebetween, thereby forming a storage capacitor. The storage capacitor can keep the data signal charged to the pixel electrode **132** stable even after the TFT is turned OFF. As illustrated in FIG. 1 (and FIG. 3), the storage lines SL constituting the storage capacitor receive a storage voltage from the power source **164** through a storage supply line **126** connected to common storage pads **150** that are connected to the leftmost output pads of the respective circuit films **170**.

[0045] The common electrode together with the pixel electrode **132** establishes an electric field for orienting the liquid crystals, and may be formed on the color filter substrate **113**.

[0046] FIG. 3 is a plan view illustrating pads connected to a circuit film and to first and second conductive spacers in the LCD device of FIG. 1.

[0047] FIGS. 4A and 4B are alternative cross-sectional views taken along section line I-I' in FIG. 3 illustrating alternative embodiments of an upper pad electrode **146** connecting the first and second conductive spacers. As shown in FIGS. 3, 4A and 4B, a common electrode **158** receives a common voltage from the power source **164**, via a common voltage input pad **160** connected to the rightmost output pad of each of the circuit films **170**, a first common voltage supply line **148**, a first common voltage pad **220**, and a first conductive spacer **120**. The first common voltage pad **220** is formed between data fanout lines **172** connected to each of the several data driving chips **104** (FIG. 1). The first conductive spacer **120** is formed on the first common voltage pad **220**.

[0048] The common electrode **158** also receives the common voltage from the power source **164**, via a second common voltage supply line **124** connected to the first common voltage pad **220**, a second common voltage pad **210**, and a second conductive spacer **122**. The second common voltage supply line **124** is formed to cross (under or over) the plurality of data fanout lines **172** connected to the plurality of data lines DL, and so, the second common voltage supply line **124** is formed on a different plane (layer) from the data fanout lines **172**. For a first example, the second common voltage supply line **124** may be formed of the same metal layer as an upper pad electrode **146** on a passivation layer **218** (as shown in FIG. 4A); or for a second example, the second common voltage supply line **124** may be formed of the same metal layer as a lower pad electrode **142** on a lower substrate **101** (as shown in FIG. 4B). The second common voltage supply line **124** is formed to cross (over or under) the adjacent data fanout lines **172** so that the first and second conductive spacers **120** and **122** are electrically connected to each other, thereby preventing the common voltage from being delayed or rippled.

[0049] The second common voltage pad **210** is formed between the data fanout lines **172** connected to the same data driving chip **104** (FIG. 1). The second common voltage pad **210** is formed to be adjacent to the data fanout line **172** positioned at the center among the data fanout lines **172** connected to the same data driving chip **104**. The second conductive spacer **122** is formed on the second common voltage pad **210**. Each of the first and second common voltage pads **220** and **210** includes a lower pad electrode **142** (formed of the same metal as the gate line GL on the same plane), a pad contact hole **144** (penetrating a gate insulating layer **212** and the passivation layer **218** that are formed to cover the lower

pad electrode **142**), and an upper pad electrode **146** (electrically connected to the lower pad electrode **142** through the pad contact hole **144**).

[0050] The LCD device of the present invention having a structure in which the number of data lines DL is decreased can compensate for a distortion of the common voltage by the second common voltage pad **210** and the second conductive spacer **122** formed between the fanout lines **172**.

[0051] FIG. **5** is a schematic view of an LCD device according to a second exemplary embodiment of the present invention.

[0052] The LCD device of FIG. **5** has the same elements as the LCD device of FIG. **1**, except that second common voltage supply line is divided according to each data driving chip. Therefore, a redundant detailed description of the same elements will be omitted.

[0053] The second common voltage supply line **124** is formed perpendicular to the plurality of data fanout lines **172** connected to the plurality of data lines DL. Here, the second common voltage supply line **124** is segmented according to the data fanout lines **172** connected to each data driving chip **104**. For example, the first to third common voltage supply lines **124A**, **124B** and **124C** are separated from each other and respectively cross (over or under) the data fanout lines **172** connected to first to third data driving chips **104A**, **104B** and **104C**. The total capacitance of parasitic capacitors connected in parallel between the data fanout line **172** connected to any one of the first to third data driving chips **104A**, **104B** and **104C** and the second common voltage supply line **124** is less than that of parasitic capacitors connected in parallel between all the data fanout lines **172** shown in FIG. **2** and the single second common voltage line **124**. Therefore, an RC (resistor-capacitor) delay difference of the data fanout line **172** is eliminated and thus a distortion of the data signal can be reduced.

[0054] Moreover, since the second common voltage supply lines **124** (**124A**, **124B**, etc.) are separated according to the data driving chips **104**, the common voltage can be differently supplied according to each of the data driving chips **104**. Therefore, if the degree of distortion in the common electrode **158** differs according to the location of the segment of second common voltage supply line **124**, the common voltage may be differently supplied according to the degree of distortion.

[0055] The LCD device of the present invention having a structure in which the number of data lines DL is decreased can compensate for a distortion of the common voltage by the second common voltage pad **210** and the second conductive spacer **122** formed between the fanout lines **172**. Furthermore, since the second common voltage supply line **124** is segmented, each segment of the second common voltage supply line **124** being associated with one of the data driving chips, the common voltage can be differently supplied.

[0056] FIG. **6** is a schematic view of an LCD device according to a third exemplary embodiment of the present invention.

[0057] The LCD device of FIG. **6** has the same elements as the LCD device of FIG. **5**, except that the storage supply line is divided (segmented) each segment corresponding to one of the data driving chips. Therefore, a detailed description of the same elements will be omitted.

[0058] The storage supply line **126** is formed to cross (over or under) the plurality of data lines DL and to be divided (segmented) with each segment of the storage supply line **126** corresponding to one of the data driving chips **104**. For example, first, second, and third storage supply lines **126A**,

126B and **126C** respectively correspond to the first, second and third data driving chips **104A**, **104B** and **104C**, and are separated from each other. The respective first, second and third storage supply lines **126A**, **126B** and **126C** independently supply a storage voltage to the storage lines SL connected thereto. If there is a deviation in a storage voltage corresponding to a location of the image display unit **108**, the first, second and third storage supply lines **126A**, **126B** and **126C** may differently supply the storage voltage to the corresponding storage lines SL.

[0059] The LCD device of the present invention having a structure in which the number of data lines DL is decreased can compensate for a distortion of the common voltage by the second common voltage pad and the second conductive spacer formed between the fanout lines **172**. Furthermore, since the second common voltage supply line is segmented, according to the data driving chips, the common voltage can be differently supplied. In addition, since the storage supply line is segmented according to the data driving chips, the storage voltage can be differently supplied.

[0060] FIG. **7** is a schematic view of an LCD device according to a fourth exemplary embodiment of the present invention. FIG. **8** is an enlarged plan view of a portion 'A' of the LCD device of FIG. **7**.

[0061] The LCD device shown in FIG. **7** minimizes the variation (distortion) of a voltage of a data signal by supplying a signal having a phase opposite to the common voltage to the storage line according to the degree of distortion of the common voltage by feedback of the common voltage. the LCD device of FIG. **7** has the same elements as the LCD device of FIG. **1**, except for: a common voltage pad for supplying a common voltage to a common electrode; a feedback dot and line adjacent to the common voltage pad; and a storage supply line for supplying an opposite phase signal to the storage line according to the degree of distortion of the common voltage. Therefore, a detailed description of the same elements will be omitted.

[0062] The common voltage supply line **148**, as shown in FIG. **8**, connects the common voltage pad **220** to the common voltage input pad **160** connected to the circuit film **170** (FIG. **7**) with the shortest distance. The common voltage supply line **148** is formed to have relatively wide width and thus reduces its line resistance. The deviation of the common voltage supplied to the common electrode **158** (see FIG. **4A** or FIG. **4B**) can be minimized by reducing the resistance of the common voltage supply line **148**.

[0063] A feedback dot **192** is connected to the circuit film **170** through a feedback pad **166** adjacent to the gate pad **162** via a feedback line **190** (see FIG. **7**). The feedback dot **192** is formed to be adjacent to the first conductive spacer(s) **120** and feeds back the common voltage supplied to the common electrode **158** through the first conductive spacer(s) **120**. The first conductive spacer(s) **120** and the feedback dot **192** are formed to be adjacent on one side of the same circuit film **170**.

[0064] The storage supply line **126** overlaps a sealing member **188** (consisting of a glass fiber, etc.) and thus the width of the storage line **126** is relatively wide. For example, the width of the storage supply line **126** is 4 mm to 6 mm. The resistance of the storage supply line **126** is reduced and a deviation of the storage voltage supplied to the storage line SL can be minimized. In this case, a storage connection line **202** is formed in a straight line shape to electrically connect the storage supply line **126** and a storage supply pad **150** to each other with the shortest distance.

[0065] FIG. 9 is a cross-sectional view illustrating the LCD device of FIG. 7 taken along section line II-II' in FIG. 8.

[0066] As shown in FIG. 9 (see also FIG. 4A or 4B), the storage supply line 126 is formed of the same metal as the gate line GL on the lower substrate 101, and the data fanout line 172 is formed of the same metal as the data line DL on the gate insulating layer 212 to cross (over) the storage supply line 126. The storage line SL is formed of the same metal as the data line DL on the gate insulating layer 212. The storage line SL and the storage supply line 126 are exposed through a connection contact hole 156 penetrating the passivation layer 218 and the gate insulating layer 212. The exposed storage line SL and the storage supply line 126 are connected to each other through a connection electrode 196.

[0067] The passivation layer 218 formed on the data fanout line 172 is formed of a thick organic layer capable of buffering pressure applied onto the sealing member 188 with a thickness of 2 μ m or more. If pressure is applied onto the LCD panel (pixel array) 130, the pressure is transmitted (e.g., by the LCD liquid) to the sealing member 188 and as a result a shorting phenomenon may occur between the storage supply line 126 and the data fanout line 172 under the sealing member 188. The sealing member 188 is formed of a material containing an elastic soft spacer in order to prevent the short phenomenon between the data fanout line 172 and the storage supply line 126 due to a shock from the exterior.

[0068] Thus, the LCD device according to the present invention forms storage supply line(s) having a relatively wide width by overlapping the sealing member. Therefore, the deviation of the storage voltage can be minimized by reducing the line resistance of the storage supply line.

[0069] As described above, the LCD device of the present invention having a structure in which the number of data lines is decreased can compensate for a distortion of the common

voltage by the second common voltage pad and the second conductive spacer formed between the fanout lines. In addition, the LCD device of the present invention having a structure in which the number of data lines is decreased can minimize the deviation of the storage voltage by providing storage supply line(s) that overlap the sealing member and have a relatively wide width.

[0070] While the invention has been shown and described with reference to certain preferred embodiments thereof, it will be understood by those skilled in the art that various changes in form and details may be made therein without departing from the spirit and scope of the invention as defined by the appended claims.

What is claimed is:

1. A display device, comprising:

- a first substrate;
- a second substrate facing the first substrate;
- a gate line disposed on the second substrate and extended in a first direction;
- a data line disposed on the second substrate and extended in a second direction different from the first direction;
- a thin film transistor connected to the gate line and to the data line;
- a pixel electrode connected to the thin film transistor;
- a plurality of storage lines disposed along at least one of the first direction and the second direction;
- a storage supply line connected to the storage lines; and
- a sealing member overlapping the storage supply line.

2. The display device of claim 1, wherein the storage supply line has a width relatively wider than any of the storage connection lines.

3. The display device of claim 2, wherein the width of the storage supply line is 4 mm to 6 mm.

* * * * *

专利名称(译)	横条纹液晶显示装置		
公开(公告)号	US20150362814A1	公开(公告)日	2015-12-17
申请号	US14/833810	申请日	2015-08-24
[标]申请(专利权)人(译)	三星显示有限公司		
申请(专利权)人(译)	三星DISPLAY CO. , LTD.		
当前申请(专利权)人(译)	三星DISPLAY CO. , LTD.		
[标]发明人	KIM DONG GYU CHANG JONG WOONG		
发明人	KIM, DONG GYU CHANG, JONG WOONG		
IPC分类号	G02F1/1362 G02F1/1345 G02F1/1368		
CPC分类号	G02F1/136286 G02F1/1345 G02F1/1368 G02F1/1362 G02F1/136213 G02F2201/123		
优先权	1020060011110 2006-02-06 KR		
其他公开文献	US9753346		
外部链接	Espacenet USPTO		

摘要(译)

一种用于改善图像质量的液晶显示装置，包括形成在第一基板上的公共电极，形成在第二基板上的栅极线和数据线，所述第二基板通过其间设置有液晶的密封构件接合到第一基板，薄膜晶体管连接到第一基板。栅极线和数据线，像素电极形成在子像素区域中，每个像素电极在栅极线的方向上具有长边并且在数据线的方向上具有短边扇出线用于从栅极线提供驱动信号。驱动芯片到数据线，第一导电垫片形成在连接到不同驱动芯片的扇出线之间，用于向公共电极提供公共电压，以及形成在连接到同一驱动芯片的扇出线之间的第二导电垫片，用于提供公共电极的公共电压。

