



US008253908B2

(12) **United States Patent**  
**Jung et al.**

(10) **Patent No.:** **US 8,253,908 B2**  
(45) **Date of Patent:** **Aug. 28, 2012**

(54) **LIQUID CRYSTAL DISPLAY**

(75) Inventors: **Mee-Hye Jung**, Suwon-si (KR); **Ji-Won Sohn**, Seoul (KR); **Jae-Jin Lyu**, Yongin-si (KR); **Chong-Chul Chai**, Seoul (KR)

(73) Assignee: **Samsung Electronics Co., Ltd.**, Suwon-si (KR)

(\*) Notice: Subject to any disclaimer, the term of this patent is extended or adjusted under 35 U.S.C. 154(b) by 0 days.

(21) Appl. No.: **13/230,329**

(22) Filed: **Sep. 12, 2011**

(65) **Prior Publication Data**

US 2011/0317119 A1 Dec. 29, 2011

#### Related U.S. Application Data

(63) Continuation of application No. 12/328,324, filed on Dec. 4, 2008, now Pat. No. 8,035,787.

(30) **Foreign Application Priority Data**

Mar. 28, 2008 (KR) ..... 10-2008-0029090

(51) **Int. Cl.**

**G02F 1/1343** (2006.01)

(52) **U.S. Cl.** ..... **349/141**; 349/143; 349/144

(58) **Field of Classification Search** ..... 349/141, 349/143, 144

See application file for complete search history.

(56) **References Cited**

#### U.S. PATENT DOCUMENTS

6,710,825 B2 3/2004 Kubo et al.  
7,113,241 B2 9/2006 Hanaoka  
7,145,622 B2 12/2006 Kataoka  
7,420,647 B2 \* 9/2008 Nakahata ..... 349/183

7,518,684 B2 4/2009 Huang et al.  
7,768,616 B2 8/2010 Huang et al.  
2004/0223112 A1 11/2004 Taniguchi  
2006/0164352 A1 7/2006 Yoo  
2007/0097279 A1 5/2007 Sugiura  
2007/0229746 A1 10/2007 Kim et al.  
2008/0018573 A1 1/2008 Hsieh  
2008/0036931 A1 2/2008 Chan et al.  
2009/0009449 A1 1/2009 Uchida et al.  
2009/0046233 A1 2/2009 Cho et al.

#### FOREIGN PATENT DOCUMENTS

JP 2003-186017 7/2003  
JP 2003-330043 11/2003  
JP 2004-302061 10/2004  
JP 2004-302195 10/2004  
JP 2006-330375 12/2006  
JP 2006-330638 12/2006  
KR 1020030066427 8/2003  
KR 1020060043315 5/2006  
KR 1020070007604 1/2007

#### OTHER PUBLICATIONS

European Search Report dated Jun. 16, 2009 in European Patent Application No. 08021670.8.

(Continued)

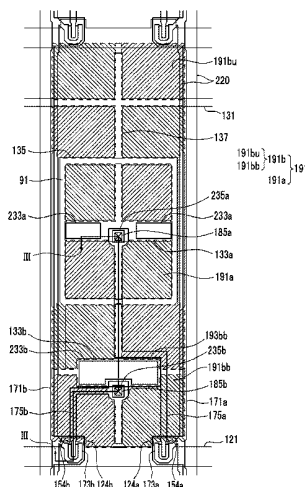
*Primary Examiner* — Rhonda Peace

(74) *Attorney, Agent, or Firm* — H.C. Park & Associates, PLC

(57) **ABSTRACT**

The present invention relates to a liquid crystal display including a pixel electrode including a first subpixel electrode and a second subpixel electrode spaced apart with a gap therebetween, a common electrode facing the pixel electrode, and a liquid crystal layer formed between the pixel electrode and the common electrode and including a plurality of liquid crystal molecules. The first and second subpixel electrodes include a plurality of branches, and each of the first and second subpixel electrodes includes a plurality of subregions. The branches extend in different directions in different subregions.

**53 Claims, 17 Drawing Sheets**



OTHER PUBLICATIONS

Non-Final Office Action dated Jan. 13, 2011 in U.S. Appl. No.  
12/328,324.

Notice of Allowance dated Jun. 14, 2011 in U.S. Appl. No.  
12/328,324.

\* cited by examiner

FIG. 1

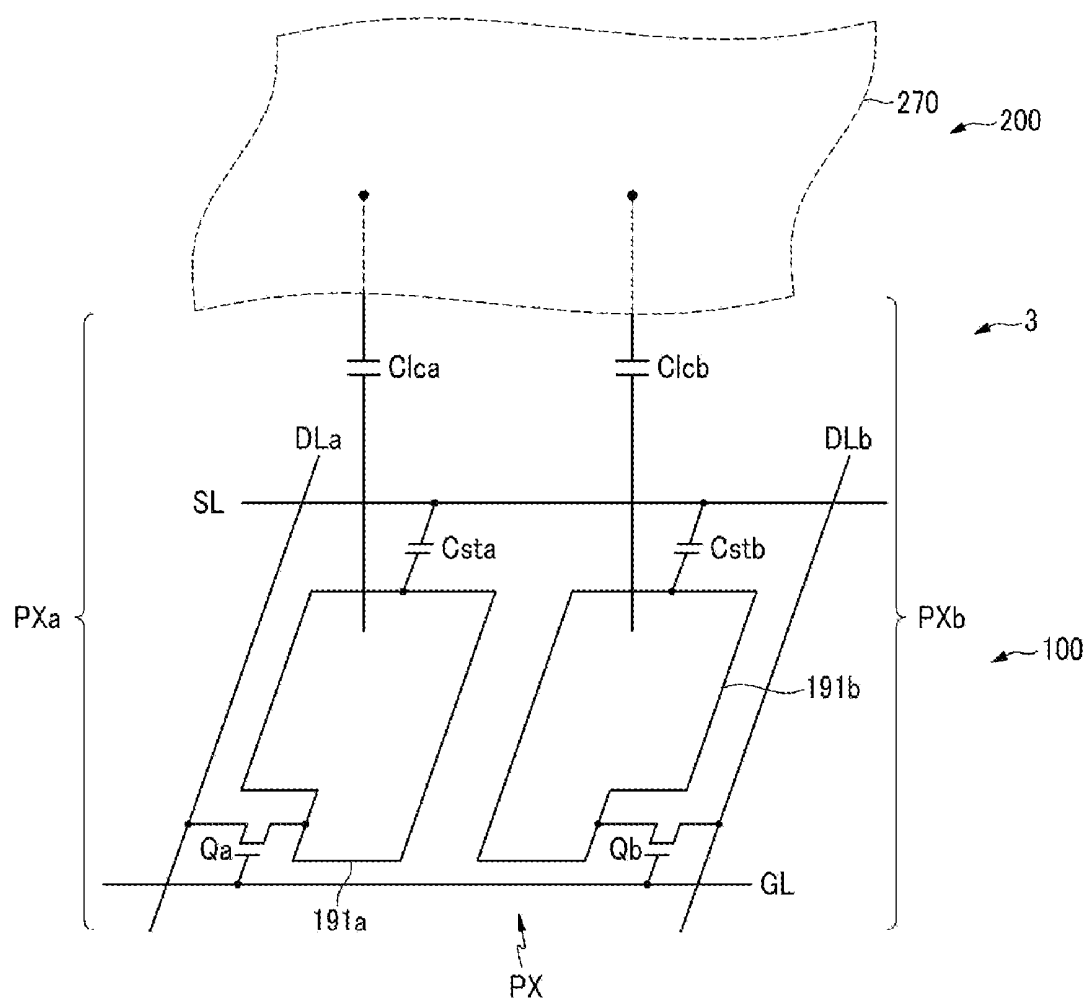


FIG. 2

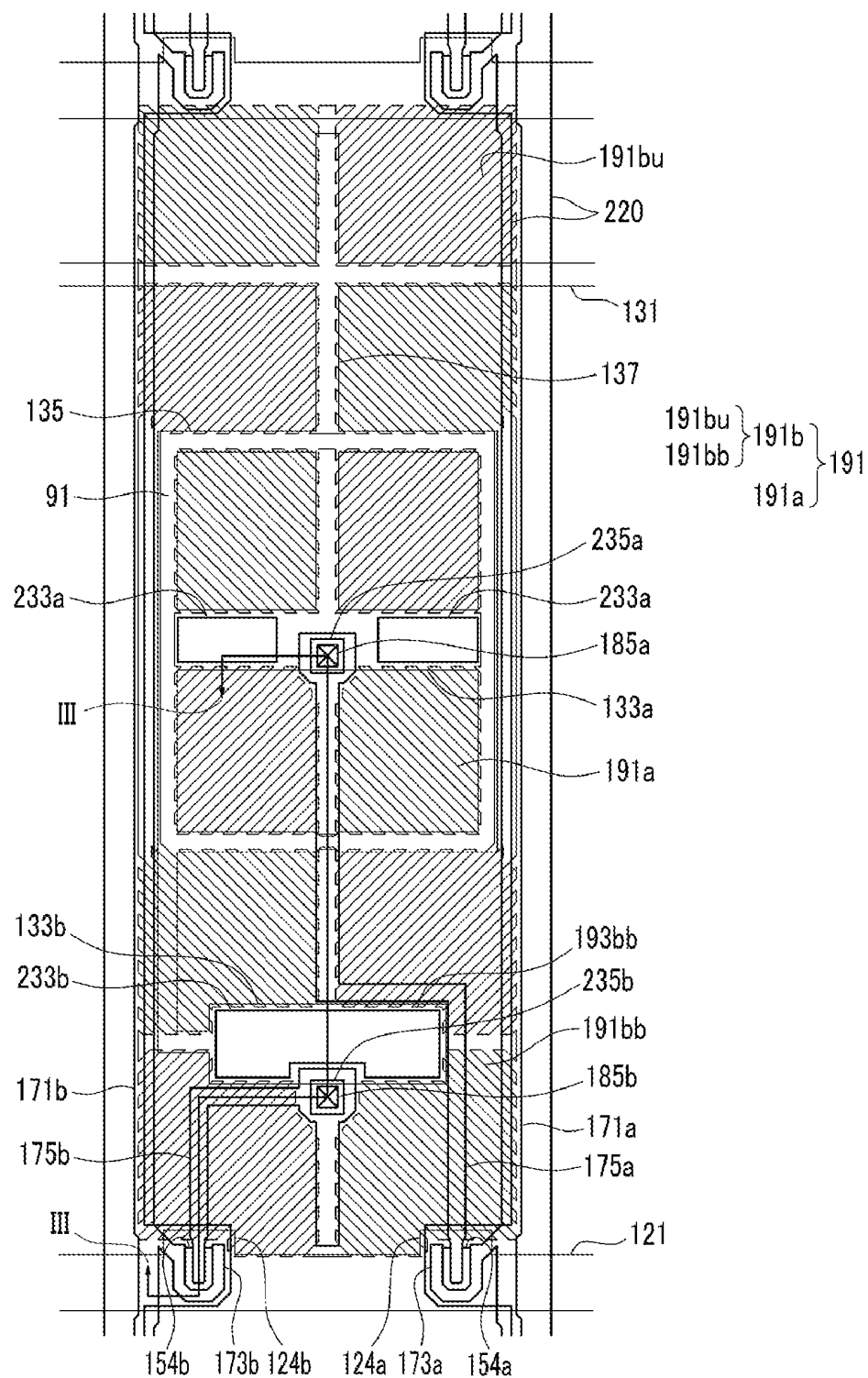


FIG.3

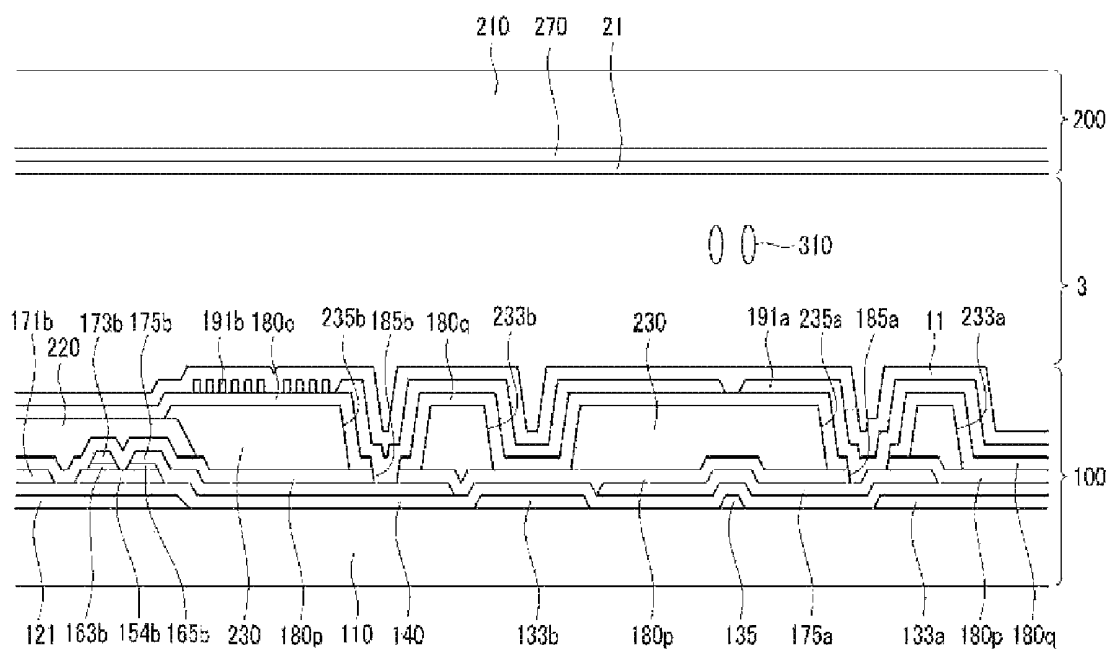


FIG. 4

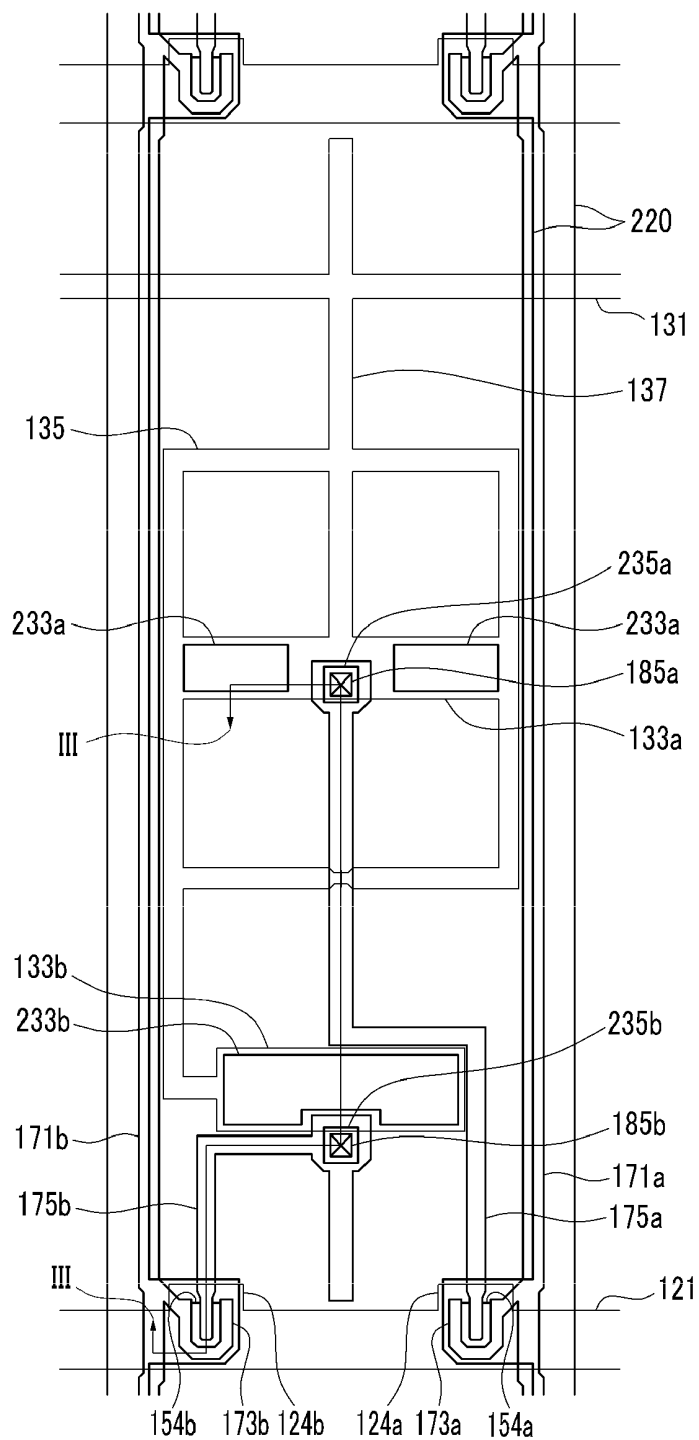


FIG. 5

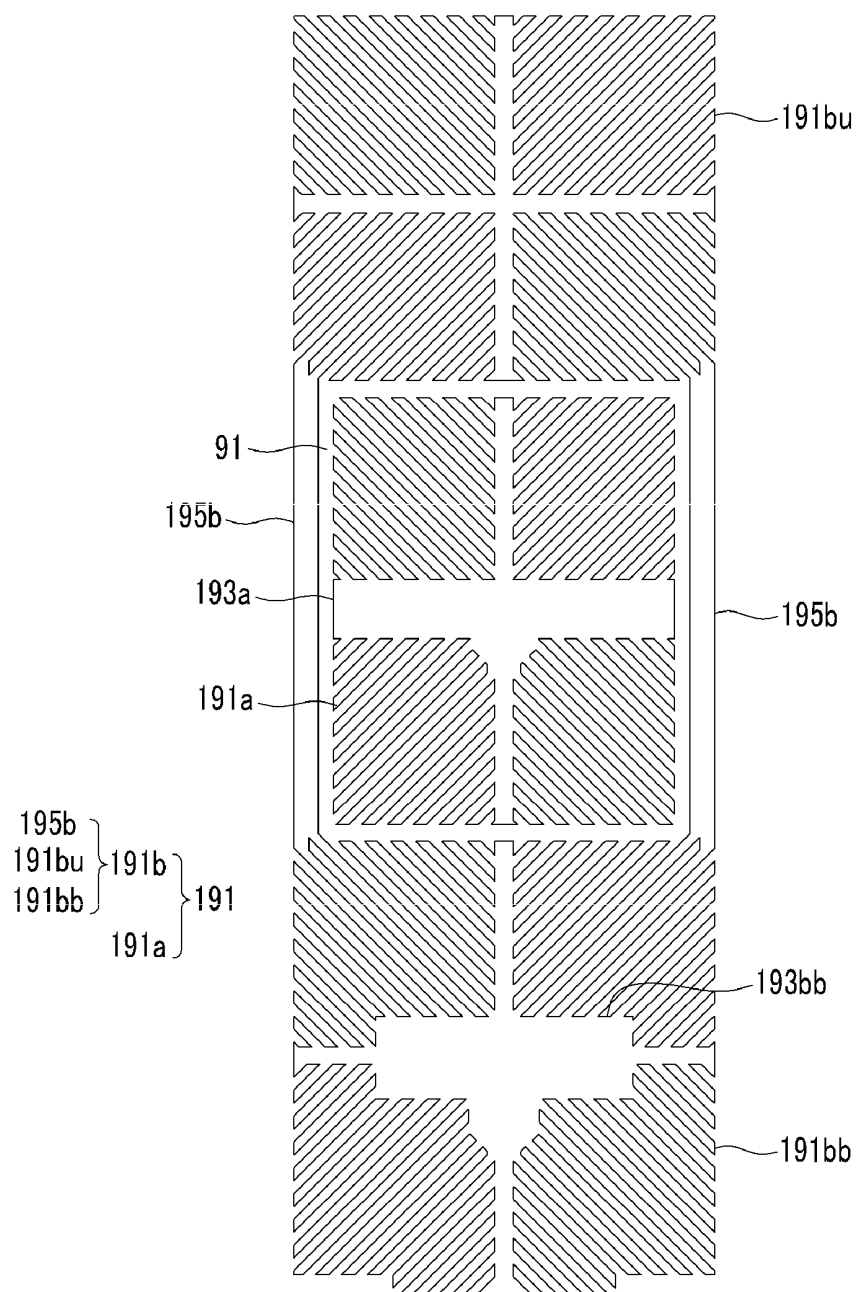


FIG. 6

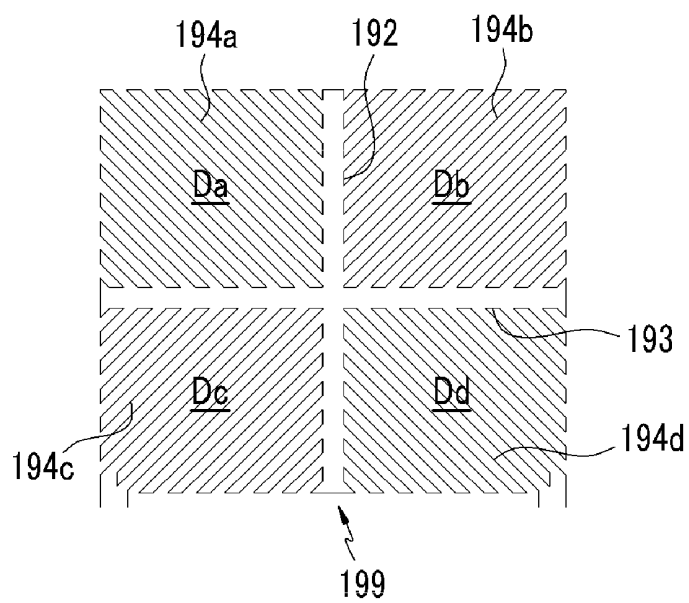


FIG. 7

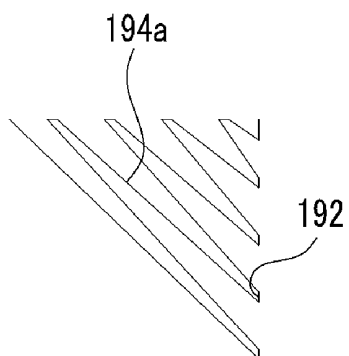




FIG. 8

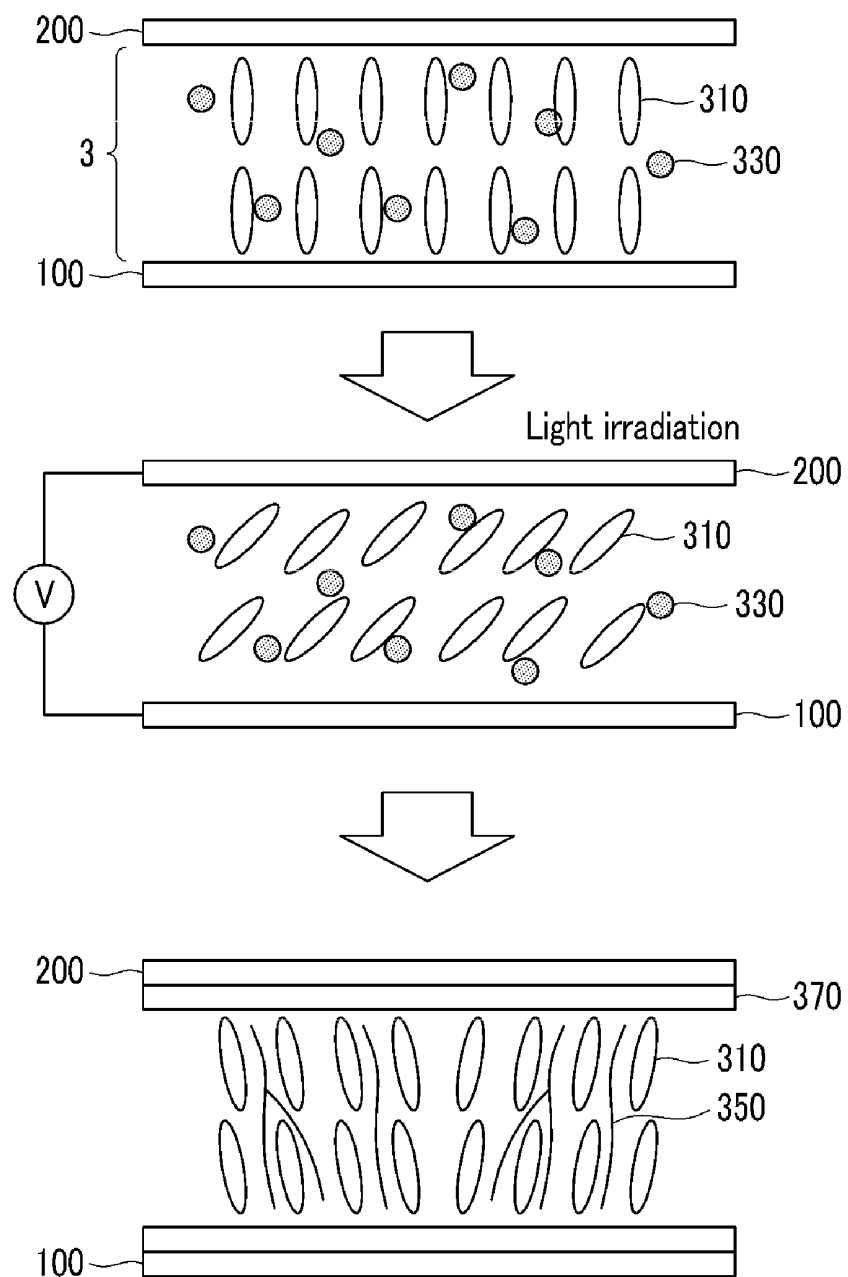


FIG.9

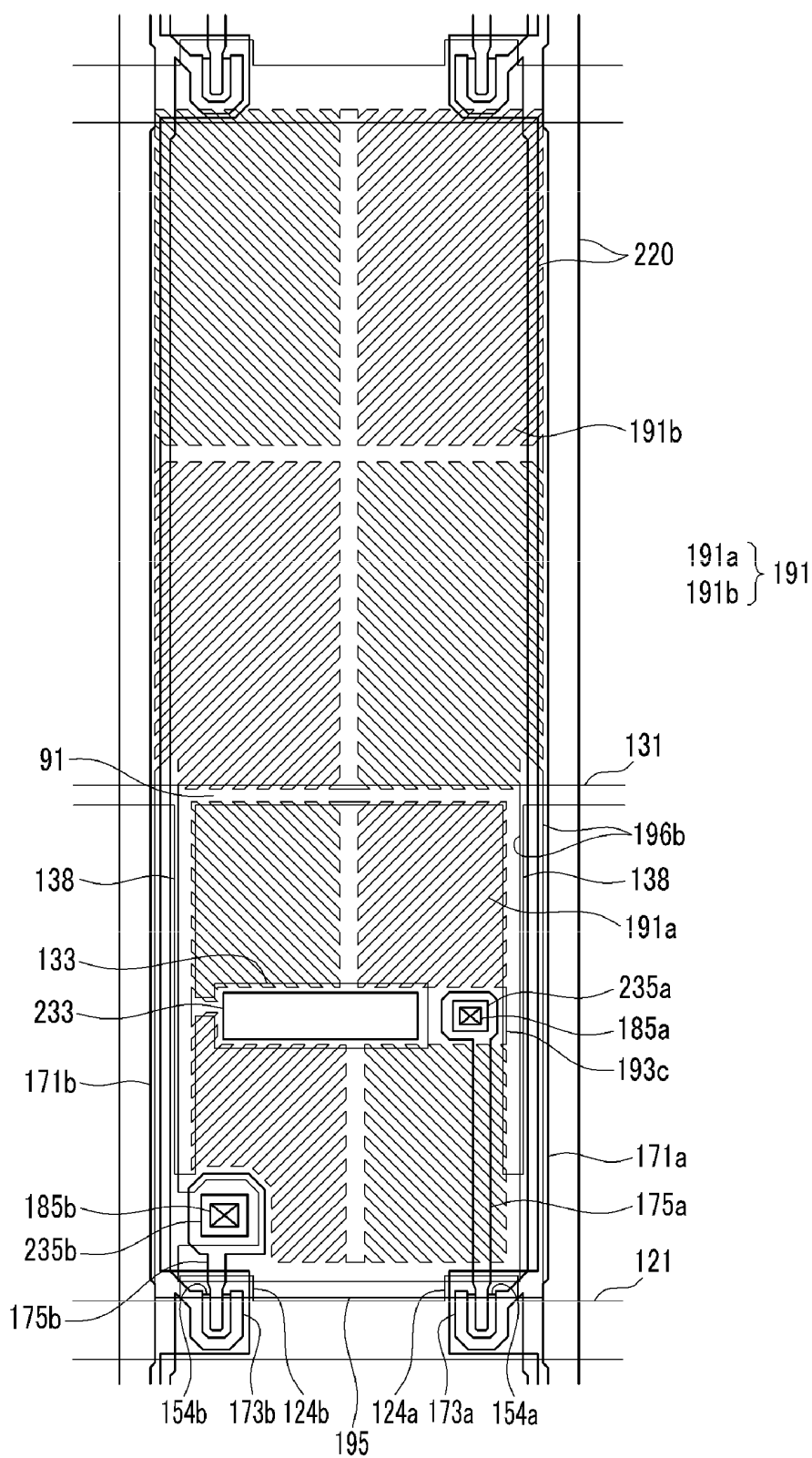


FIG. 10

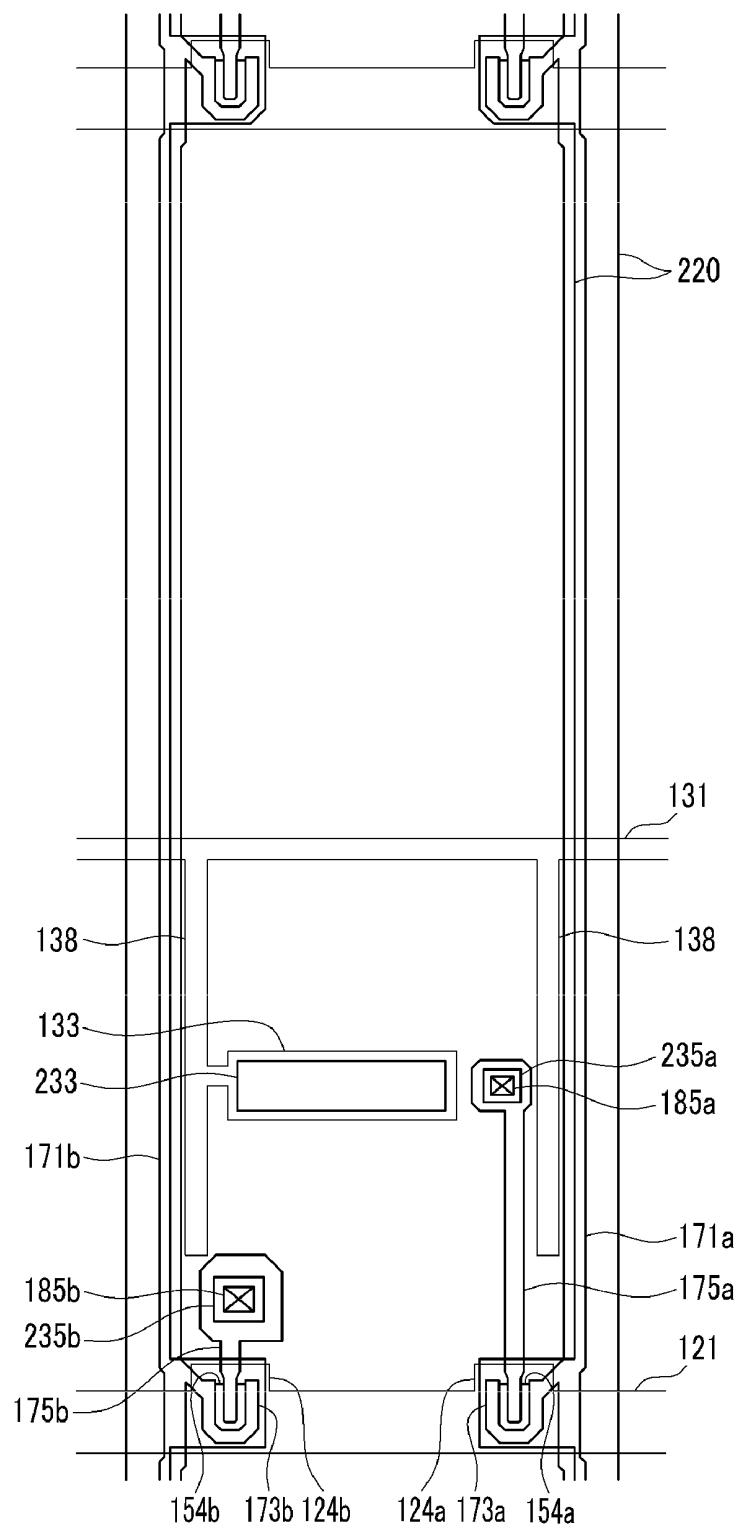
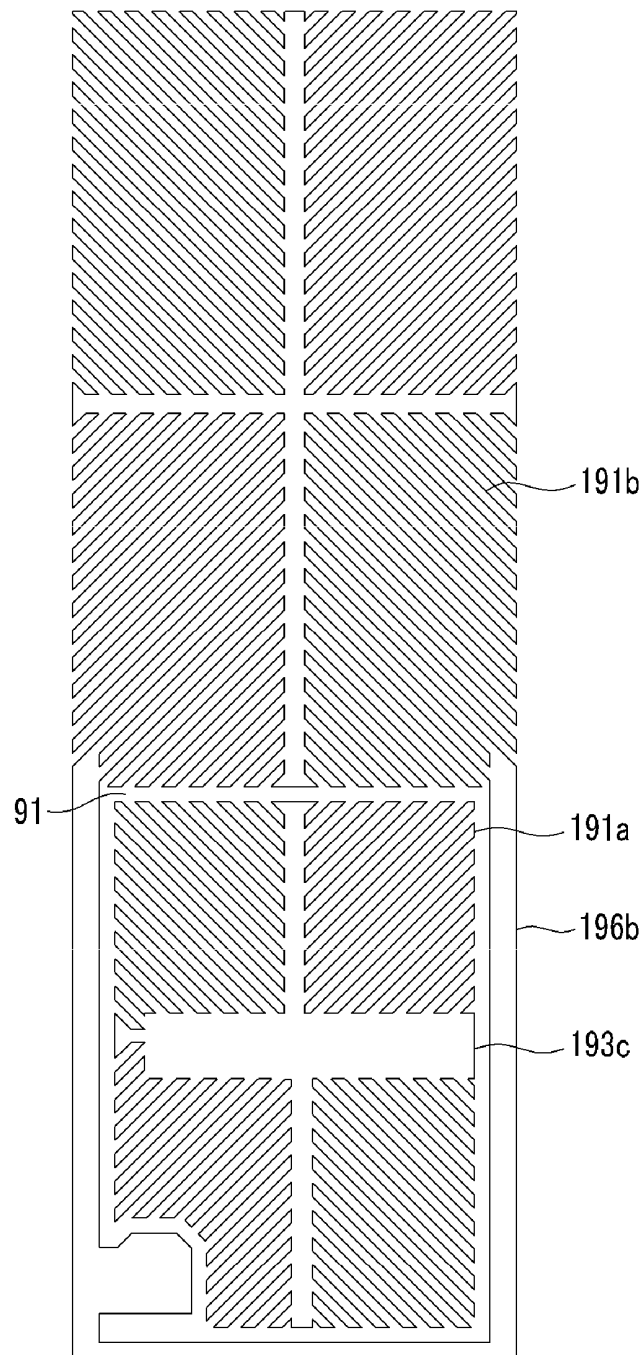


FIG.11



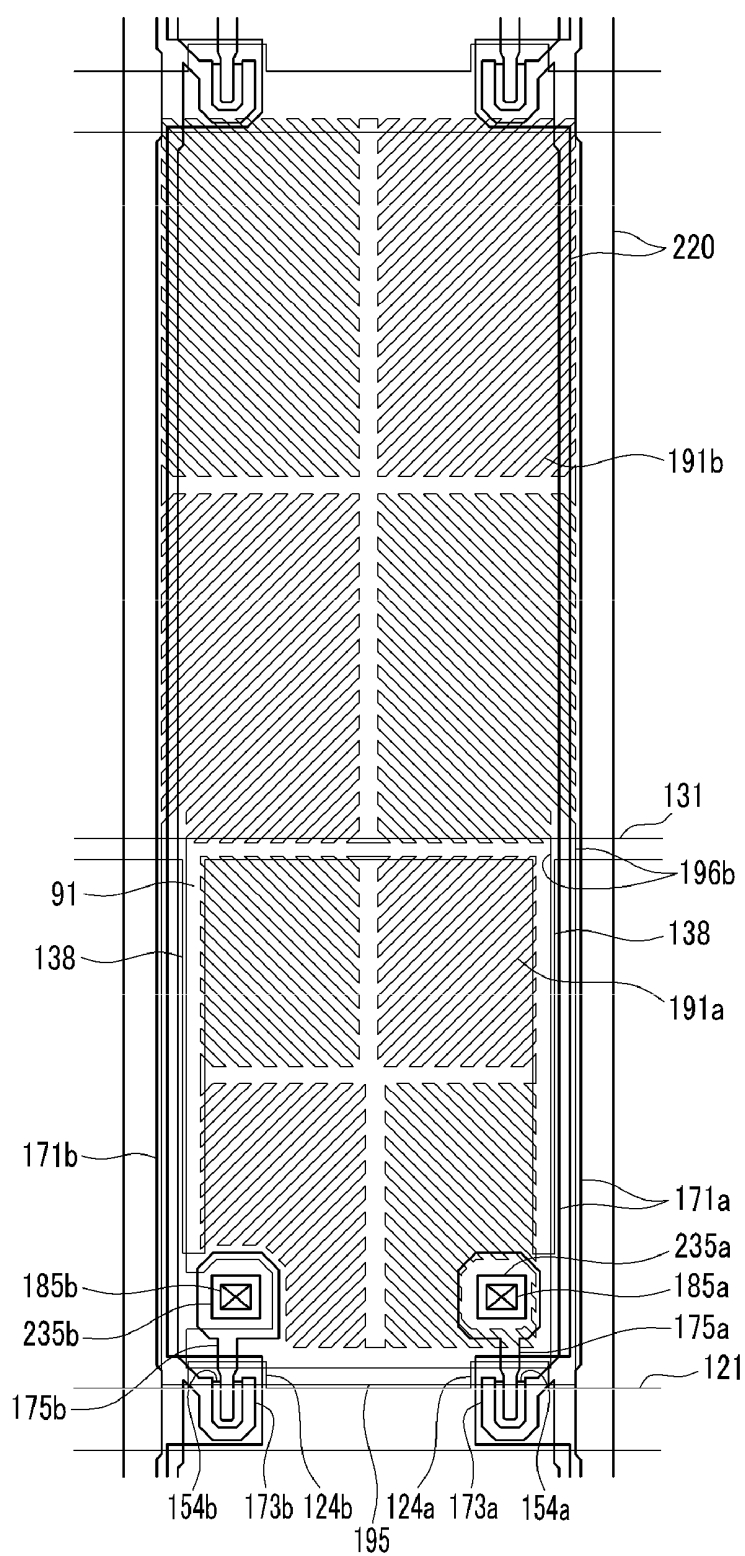


FIG. 13

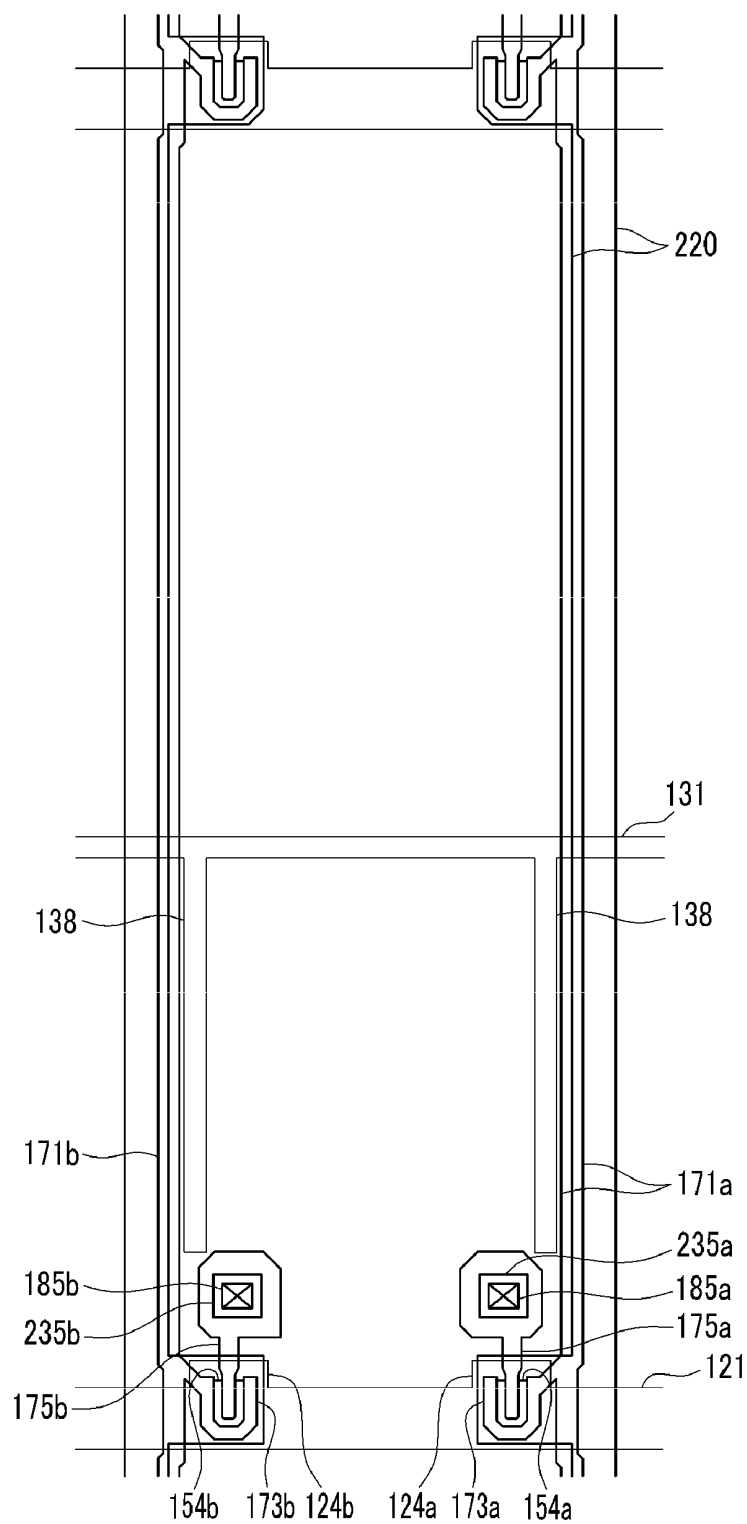


FIG.14

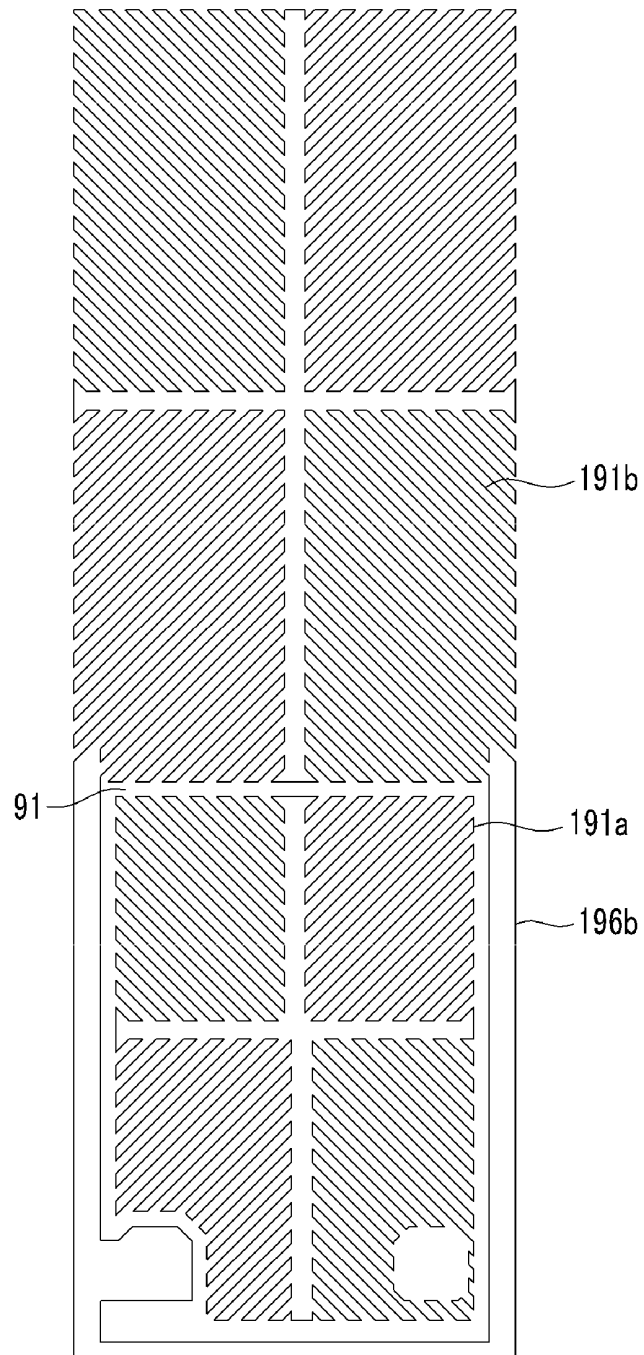


FIG. 15

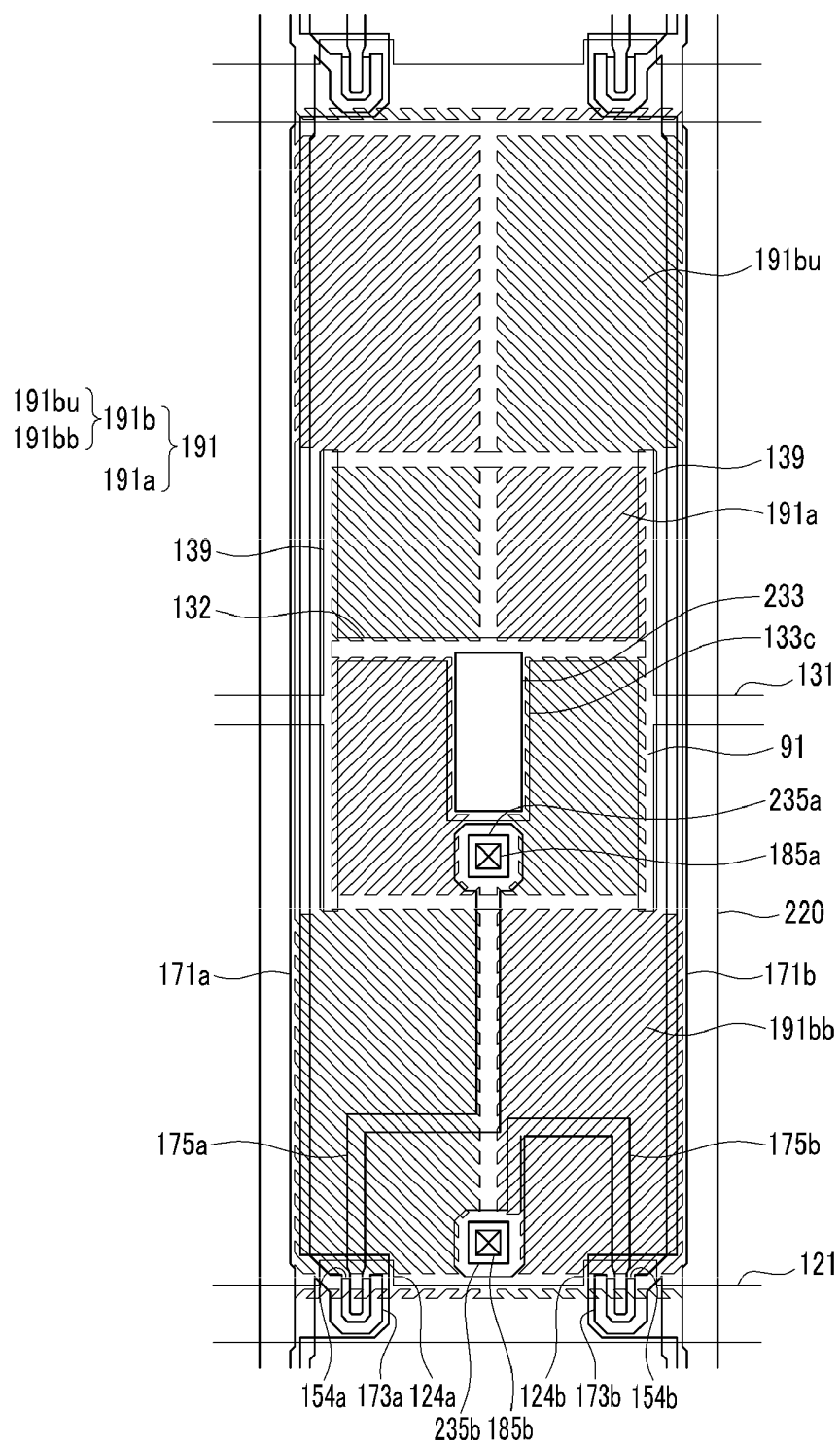




FIG. 16

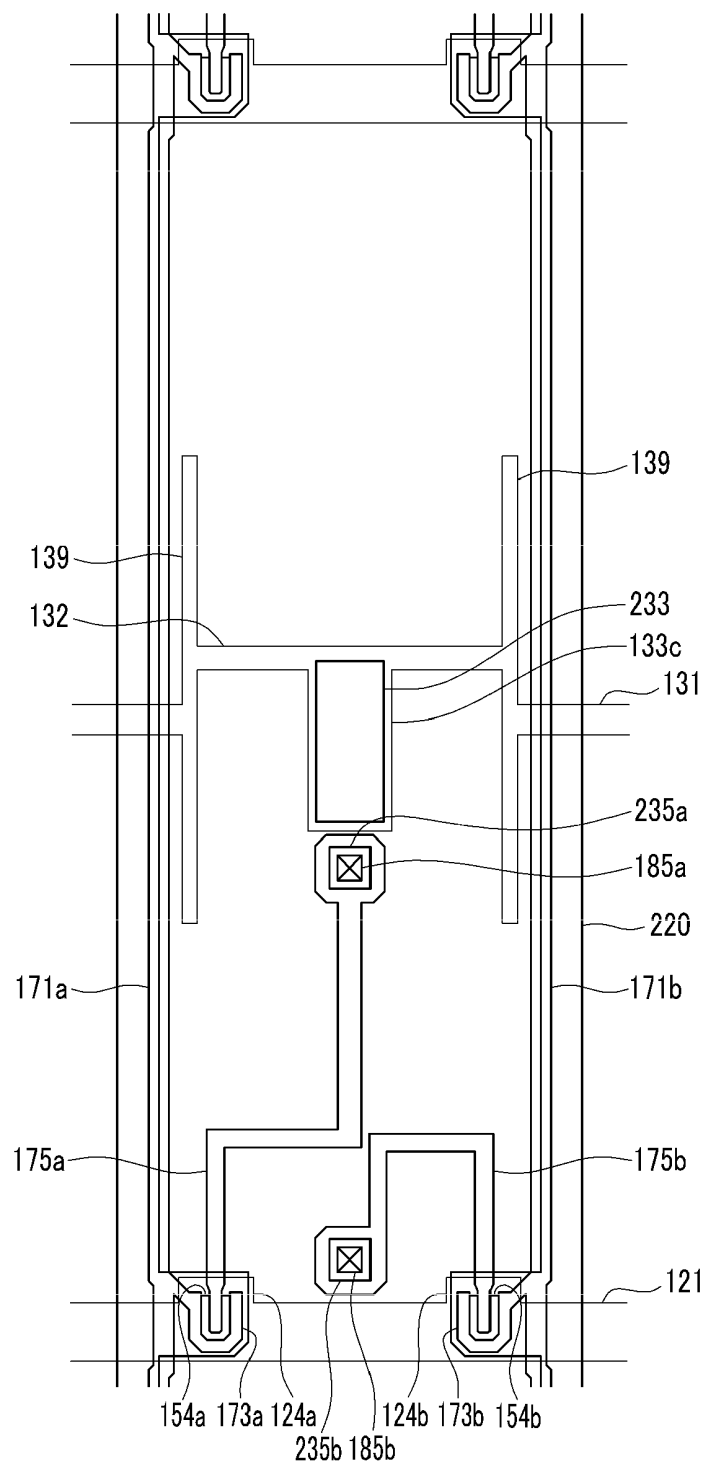


FIG. 17

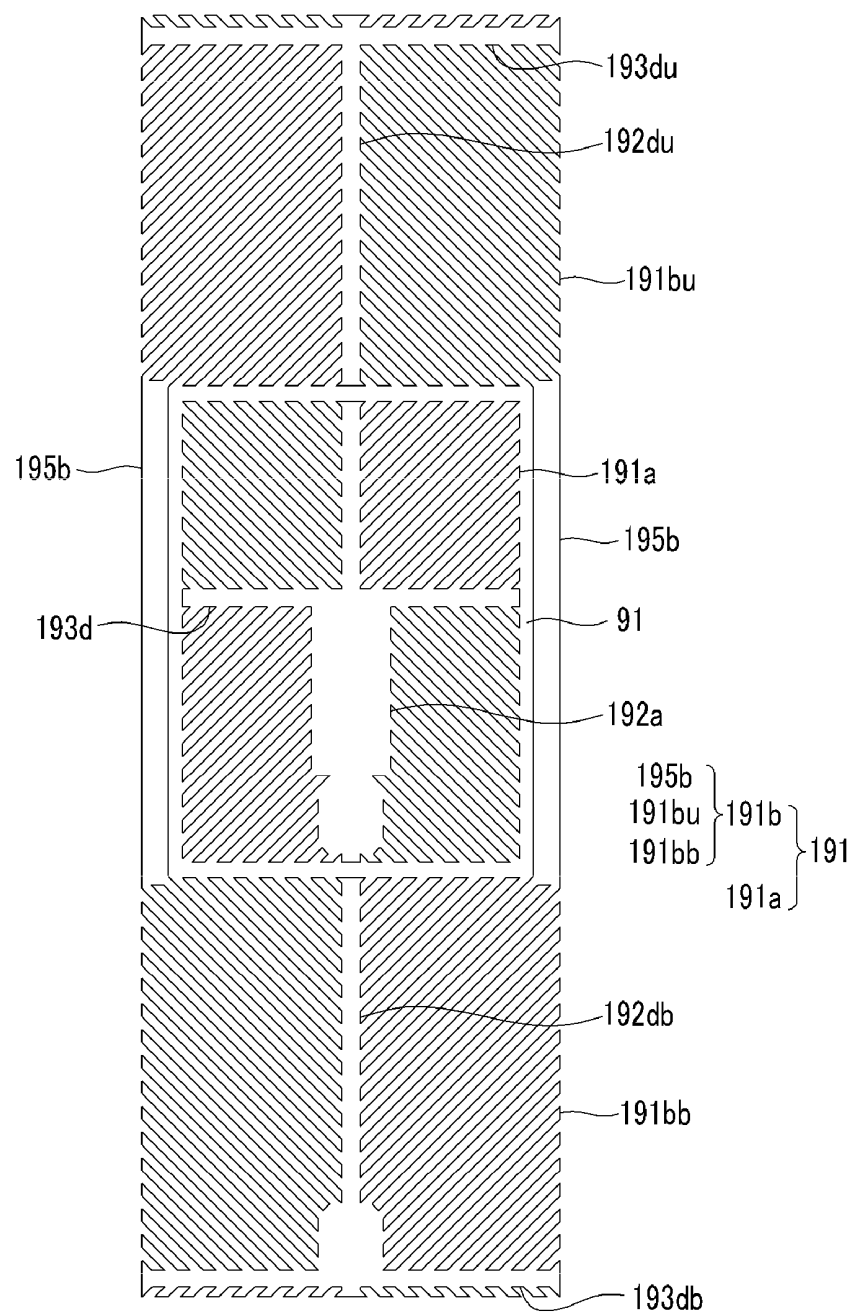


FIG.18

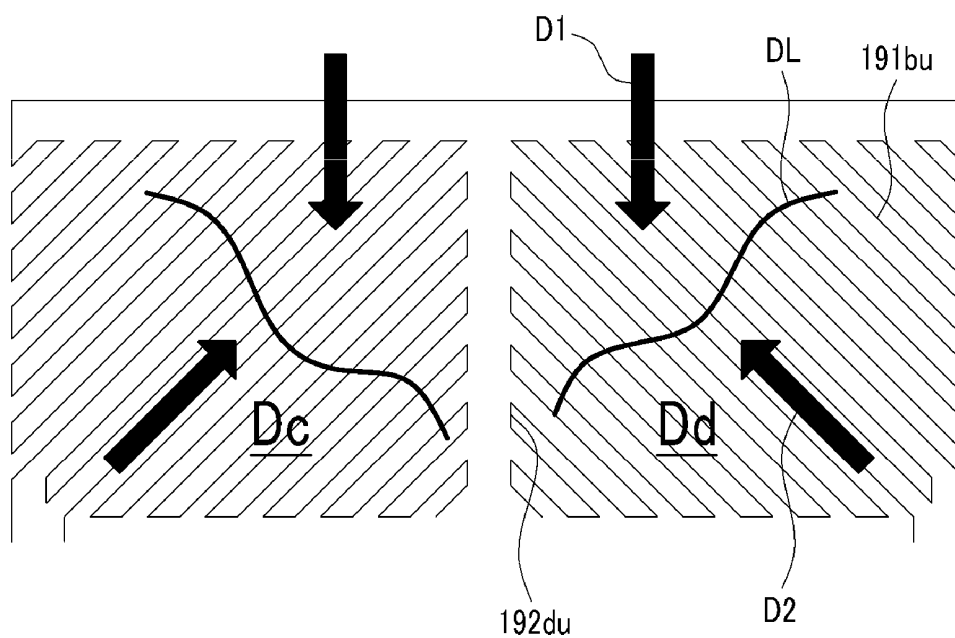
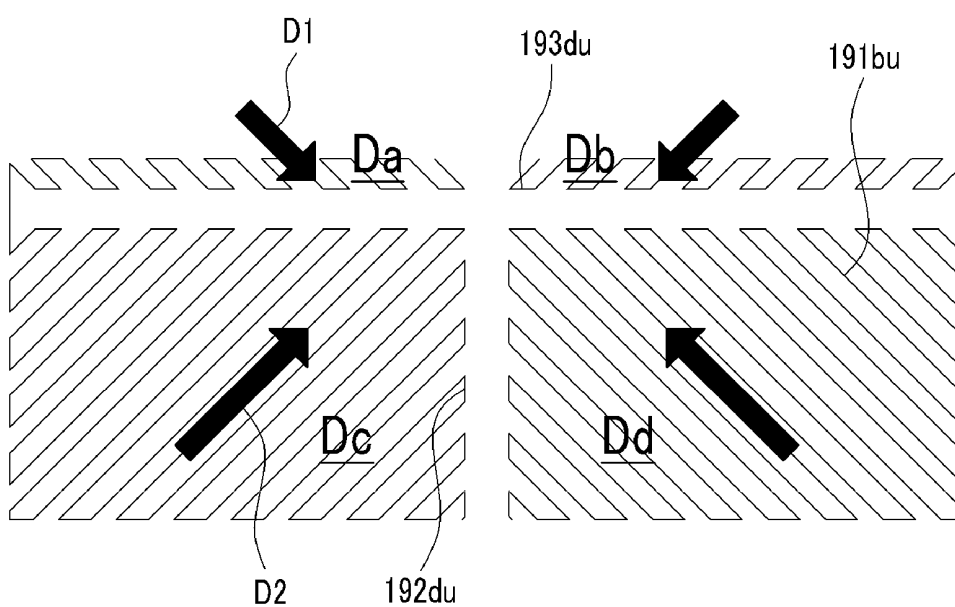


FIG.19



**LIQUID CRYSTAL DISPLAY****CROSS-REFERENCE TO RELATED APPLICATION**

This application is a continuation of U.S. patent application Ser. No. 12/328,324, filed on Dec. 4, 2008, and claims priority from and the benefit of Korean Patent Application No. 10-2008-0029090, filed on Mar. 28, 2008, which is hereby incorporated by reference for all purposes as if fully set forth herein.

**BACKGROUND OF THE INVENTION****1. Field of the Invention**

The present invention relates to a liquid crystal display.

**2. Discussion of the Background**

Liquid crystal displays (LCDs) are one of the most widely used flat panel displays, and an LCD includes a pair of panels provided with field-generating electrodes, such as pixel electrodes and a common electrode, and a liquid crystal (LC) layer disposed between the two panels. The LCD displays images when voltages are applied to the field-generating electrodes to generate an electric field in the LC layer, which determines the orientations of LC molecules therein, thereby adjusting the polarization of light incident thereto.

Among LCDs, a vertical alignment (VA) mode LCD, in which LC molecules are aligned such that the long axes of the LC molecules are perpendicular to the panels in the absence of an electric field, has been developed.

In a VA mode LCD, a wide viewing angle can be realized due to cutouts, such as slits in the field-generating electrodes and protrusions on the field-generating electrodes. Since the cutouts and protrusions may determine the tilt directions of the LC molecules, the tilt directions may be distributed in several directions using the cutouts and protrusions, thereby widening the reference viewing angle.

Also, a method for pretilting LC molecules in the absence of an electric field has been developed to improve the response speed of the LC molecules while realizing a wide viewing angle. For the LC molecules to pretilt in various directions, alignment layers having various alignment directions may be used. Alternatively, the LC layer may be subjected to an electric field and a thermal or light-hardened material may be added. Then light may be irradiated onto the LC layer to harden the thermal or light-hardening material, thereby pretilting the LC molecules.

However, the VA mode liquid crystal display may have lower side visibility compared with front visibility. To improve the side visibility, one pixel may be divided into two subpixels and different voltages may be applied to the subpixels.

**SUMMARY OF THE INVENTION**

The present invention provides a liquid crystal display that may have a wide viewing angle and a fast response speed, as well as excellent visibility and transmittance.

Additional features of the invention will be set forth in the description which follows, and in part will be apparent from the description, or may be learned by practice of the invention.

The present invention discloses a liquid crystal display including a pixel electrode including a first subpixel electrode and a second subpixel electrode spaced apart from each other with a gap therebetween, a common electrode facing the pixel electrode, and a liquid crystal layer disposed between the

pixel electrode and the common electrode. The liquid crystal layer includes a plurality of liquid crystal molecules, and the first and second subpixel electrodes include a plurality of branches. Each of the first and second subpixel electrodes includes a plurality of subregions, and the branches extend in different directions in different subregions.

The present invention also discloses a liquid crystal display including a pixel electrode including a first subpixel electrode and a second subpixel electrode spaced apart from each other with a gap therebetween, a common electrode facing the pixel electrode, and a liquid crystal layer disposed between the pixel electrode and the common electrode and including a plurality of liquid crystal molecules. The liquid crystal layer includes a first portion disposed between the first subpixel electrode and the common electrode and a second portion disposed between the second subpixel electrode and the common electrode. Each of the first and second portions includes a plurality of subregions, and the liquid crystal molecules are aligned in different directions in different subregions. Areas of the subregions are different from each other in the first portion or in the second portion.

The present invention also discloses a liquid crystal display including a first signal line and a second signal line, a third signal line and a fourth signal line crossing the first and second signal lines, a pixel electrode including a first subpixel electrode and a second subpixel electrode spaced apart with a gap therebetween, a first switching element connected to the first signal line and the third signal line to transmit a data voltage from the third signal line to the first subpixel electrode, a second switching element connected to the first signal line and the fourth signal line to transmit a data voltage from the fourth signal line to the second subpixel electrode, a common electrode facing the pixel electrode, and a liquid crystal layer disposed between the pixel electrode and the common electrode and including a plurality of liquid crystal molecules. One of the first subpixel electrode and the second subpixel electrode includes a plurality of branches, and the one of the first subpixel electrode and the second subpixel electrode includes a plurality of subregions. The branches extend in different directions in different subregions.

It is to be understood that both the foregoing general description and the following detailed description are exemplary and explanatory and are intended to provide further explanation of the invention as claimed.

**BRIEF DESCRIPTION OF THE DRAWINGS**

The accompanying drawings, which are included to provide a further understanding of the invention and are incorporated in and constitute a part of this specification, illustrate embodiments of the invention, and together with the description serve to explain the principles of the invention.

FIG. 1 is an equivalent circuit diagram of one pixel in a liquid crystal display according to an exemplary embodiment of the present invention.

FIG. 2 is a layout view of a liquid crystal display according to an exemplary embodiment of the present invention.

FIG. 3 is a cross-sectional view of the liquid crystal display shown in FIG. 2 taken along line III-III.

FIG. 4 is a layout view of the liquid crystal display shown in FIG. 2 without the pixel electrode.

FIG. 5 is a top plan view showing the pixel electrode of the liquid crystal display shown in FIG. 2.

FIG. 6 is a top plan view of a basic electrode of the pixel electrode according to an exemplary embodiment of the present invention.

FIG. 7 is an enlarged view of the portion of the basic electrode shown in FIG. 6.

FIG. 8 is a view showing a process of pretilting liquid crystal molecules using prepolymers polarized by light such as ultraviolet rays.

FIG. 9, FIG. 12, and FIG. 15 are layout views of a liquid crystal display according to another exemplary embodiment of the present invention.

FIG. 10, FIG. 13, and FIG. 16 are layout views of the liquid crystal displays shown in FIG. 9, FIG. 12, and FIG. 15 without the pixel electrodes.

FIG. 11, FIG. 14, and FIG. 17 are top plan views of the pixel electrodes in the liquid crystal displays shown in FIG. 9, FIG. 12, and FIG. 15.

FIG. 18 is a top plan view of a portion of a pixel electrode in a liquid crystal display according to another exemplary embodiment of the present invention.

FIG. 19 is a top plan view of the portion of the pixel electrode shown in FIG. 18.

#### DETAILED DESCRIPTION OF THE ILLUSTRATED EMBODIMENTS

The invention is described more fully hereinafter with reference to the accompanying drawings, in which embodiments of the invention are shown. This invention may, however, be embodied in many different forms and should not be construed as limited to the embodiments set forth herein. Rather, these embodiments are provided so that this disclosure is thorough, and will fully convey the scope of the invention to those skilled in the art. In the drawings, the size and relative sizes of layers and regions may be exaggerated for clarity. Like reference numerals in the drawings denote like elements.

It will be understood that when an element or layer is referred to as being "on" or "connected to" another element or layer, it can be directly on or directly connected to the other element or layer, or intervening elements or layers may be present. In contrast, when an element is referred to as being "directly on" or "directly connected to" another element or layer, there are no intervening elements or layers present.

FIG. 1 is an equivalent circuit diagram of one pixel in a liquid crystal display according to an exemplary embodiment of the present invention.

Referring to FIG. 1, a liquid crystal display according to an exemplary embodiment of the present invention includes signal lines, which include a plurality of gate lines GL, a plurality of pairs of data lines DL<sub>a</sub> and DL<sub>b</sub>, and a plurality of storage electrode lines SL, and a plurality of pixels PX connected to the signal lines. The liquid crystal display includes a lower panel 100 and an upper panel 200 facing each other, and a liquid crystal layer 3 disposed therebetween.

Each pixel PX includes a pair of subpixels PX<sub>a</sub> and PX<sub>b</sub>. Each subpixel PX<sub>a</sub>/PX<sub>b</sub> includes a switching element Q<sub>a</sub>/Q<sub>b</sub>, a liquid crystal capacitor Cl<sub>ca</sub>/Cl<sub>cb</sub>, and a storage capacitor C<sub>sta</sub>/C<sub>stb</sub>.

Each switching element Q<sub>a</sub>/Q<sub>b</sub> is a three-terminal element, such as a thin film transistor, provided on a lower panel 100 and including a control terminal connected to the gate line GL, an input terminal connected to the data line DL<sub>a</sub>/DL<sub>b</sub>, and an output terminal connected to the liquid crystal capacitor Cl<sub>ca</sub>/Cl<sub>cb</sub> and the storage capacitor C<sub>sta</sub>/C<sub>stb</sub>.

The liquid crystal capacitor Cl<sub>ca</sub>/Cl<sub>cb</sub> uses a subpixel electrode and a common electrode 270 as two terminals. The liquid crystal layer 3 between the electrodes 191<sub>a</sub>/191<sub>b</sub> and 270 functions as a dielectric material.

The storage capacitor C<sub>sta</sub>/C<sub>stb</sub> serving as an assistant to the liquid crystal capacitor Cl<sub>ca</sub>/Cl<sub>cb</sub> includes a storage electrode line SL on the lower display panel 100, a subpixel electrode 191<sub>a</sub>/191<sub>b</sub> overlapping the storage electrode line, and an insulator disposed therebetween. A voltage, such as a common voltage V<sub>com</sub>, is applied to the storage electrode line SL.

A difference is generated between the voltages charged to two liquid crystal capacitors Cl<sub>ca</sub> and Cl<sub>cb</sub>. For example, the data voltage applied to the liquid crystal capacitor Cl<sub>ca</sub> may be less than or greater than the data voltage applied to the liquid crystal capacitor Cl<sub>cb</sub>. Therefore, when the voltages of the first and second liquid crystal capacitors Cl<sub>ca</sub> and Cl<sub>cb</sub> are appropriately adjusted, it may be possible to make an image viewed from the side as similar as possible to an image viewed from the front, thereby improving the side visibility.

Next, a liquid crystal display according to an exemplary embodiment of the present invention will be described in detail with reference to FIG. 2, FIG. 3, FIG. 4, FIG. 5, FIG. 6, and FIG. 7.

FIG. 2 is a layout view of a liquid crystal display according to an exemplary embodiment of the present invention, FIG. 3 is a cross-sectional view of the liquid crystal display shown in FIG. 2 taken along line III-III, FIG. 4 is a layout view of the liquid crystal display shown in FIG. 2 without the pixel electrode, FIG. 5 is a top plan view showing the pixel electrode of the liquid crystal display shown in FIG. 2, FIG. 6 is a top plan view of a basic electrode of the pixel electrode according to an exemplary embodiment of the present invention, and FIG. 7 is an enlarged view of a portion of the basic electrode shown in FIG. 6.

Referring to FIG. 2 and FIG. 3, a liquid crystal display according to an exemplary embodiment of the present invention includes a lower panel 100 and an upper panel 200 facing each other, and a liquid crystal layer 3 disposed between the two panels 100 and 200.

First, the lower panel 100 will be described.

A plurality of gate lines 121 and a plurality of storage electrode lines 131 are formed on an insulating substrate 110.

The gate lines 121 transmit gate signals and extend in a transverse direction. Each gate line 121 includes a plurality of first and second gate electrodes 124<sub>a</sub> and 124<sub>b</sub> protruding upward.

The storage electrode lines 131 include a stem extending substantially parallel to the gate lines 121, and a plurality of branches extending from the stem. Each branch includes a longitudinal portion 137, a loop 135, a first storage electrode 133<sub>a</sub>, and a second storage electrode 133<sub>b</sub>.

The longitudinal portion 137 extends upward and downward from the stem (hereinafter, an imaginary straight line in the direction in which the longitudinal portion 137 extends is referred to as a "longitudinal center line").

The loop 135 may be substantially rectangular, and the upper edge thereof vertically may meet the longitudinal portion 137.

The first storage electrode 133<sub>a</sub> extends in a transverse direction from the center of the left edge of the loop 135 to the center of the right edge, and may have a wider width than the longitudinal portion 137 or the loop 135. The first storage electrode 133<sub>a</sub> and the longitudinal portion 137 vertically meet each other.

The left edge of the loop 135 extends downward and curves to the right to form the second storage electrode 133<sub>b</sub>. The width of the second storage electrode 133<sub>b</sub> is expanded and extends substantially parallel to the first storage electrode 133<sub>a</sub> in the transverse direction.

However, the shapes and arrangement of the storage electrode lines **131** may be modified in various forms.

A gate insulating layer **140** is formed on the gate lines **121** and the storage electrode lines **131** and a plurality of semi-conductors **154a** and **154b**, which may be made of amorphous or crystallized silicon, are formed on the gate insulating layer **140**.

A pair of ohmic contacts **163b** and **165b** are formed on the first semiconductor **154b**, and the ohmic contacts **163b** and **165b** may be formed of a material such as n+hydrogenated amorphous silicon in which an n-type impurity is doped with a high concentration or silicide.

A pair of data lines **171a** and **171b** and a plurality of first and second drain electrodes **175a** and **175b** are formed on the ohmic contacts **163b** and **165b**, and on the gate insulating layer **140**.

The data lines **171a** and **171b** transmit data signals, extend substantially in the longitudinal direction, and cross the gate lines **121** and the storage electrode lines **131**. Each data line **171a/171b** includes a plurality of first/second source electrode **173a/173b** extending toward the first/second gate electrode **124a/124b** and curving with a "U" shape, and the first/second source electrode **173a/173b** is opposite the first/second drain electrode **175a/175b** with respect to the first/second gate electrode **124a/124b**.

Each first drain electrode **175a** has one end enclosed by the first source electrode **173a** from which it extends upward, curves to the left following the upper edge of the second storage electrode **133b**, and again extends upward near the longitudinal center line to form the other end. The other end of the first drain electrode **175a** extends to where the second storage electrode **133b** is disposed, and has a wide area for connection with another layer.

Each second drain electrode **175b** has one end enclosed by the second source electrode **173b** from which it extends upward to the second storage electrode **133b**, curves to the right, extends following the lower edge of the second storage electrode **133b**, expands with a wide area near the longitudinal center line, and again extends downward to form a longitudinal portion **176**.

However, the shapes and arrangement of the first and second drain electrodes **175a** and **175b** and the data lines **171a** and **171b** may be modified in various ways.

A first/second gate electrode **124a/124b**, a first/second source electrode **173a/173b**, and a first/second drain electrode **175a/175b** respectively form a first/second thin film transistor (TFT) Qa/Qb along with a first/second semiconductor **154a/154b**, and a channel of the first/second thin film transistor Qa/Qb is formed on the first/second semiconductor **154a/154b** between the first/second source electrode **173a/173b** and the first/second drain electrode **175a/175b**.

The ohmic contacts **163b** and **165b** are disposed only between the underlying semiconductor islands **154a** and **154b** and the overlying data lines **171a** and **171b** and drain electrodes **175a** and **175b**, and may reduce contact resistance between them. The semiconductors **154a** and **154b** each have a portion that is exposed without being covered by the data lines **171a** and **171b** and the drain electrodes **175a** and **175b**, and a portion between the source electrodes **173a** and **173b** and the drain electrodes **175a** and **175b**.

A lower passivation layer **180p**, which may be made of silicon nitride or silicon oxide, is formed on the data lines **171a** and **171b**, the drain electrodes **175a** and **175b**, and the exposed portions of the semiconductors **154a** and **154b**.

A black matrix including a plurality of light blocking members **220** spaced at intervals from each other is formed on the lower passivation layer **180p**. Each light blocking member

**220** may include a stripe portion extending upward and downward, and a quadrangle portion corresponding to the thin film transistor to prevent light leakage.

A plurality of color filters **230** are formed on the lower passivation layer **180p** and the light blocking members **220**. The color filters **230** are mostly formed in a region surrounded by light blocking members **220**. The color filters **230** have a plurality of holes **235a** and **235b** disposed on the first and second drain electrodes **175a** and **175b**, and a plurality of openings **233a** and **233b** disposed on the first and second storage electrodes **133a** and **133b**, respectively. The opening **233a** and **233b** reduce the thickness of the dielectric material forming the storage capacitors Csta and Cstb such that the storage capacitance may be increased.

Here, the lower passivation layer **180p** may prevent pigments of the color filter **230** from flowing into the exposed semiconductors **154a** and **154b**.

An upper passivation layer **180q** is formed on the light blocking members **220** and the color filters **230**. The upper passivation layer **180q** may be made of an inorganic insulating material, such as silicon nitride or silicon oxide, and may prevent the color filters **230** from lifting and suppress the contamination of the liquid crystal layer **3** by the organic material, such as a solvent flowing from the color filters **230**, so defects generated during driving, such as an afterimage, may be prevented.

However, at least one of the light blocking members **220** and the color filters **230** may be disposed on the upper panel **200**, and one of the lower passivation layer **180p** and the upper passivation layer **180q** of the lower panel **100** may be omitted in this case.

The upper passivation layer **180q** and the lower passivation layer **180p** have a plurality of contact holes **185a** and **185b** respectively exposing the first and second drain electrodes **175a** and **175b**.

A plurality of pixel electrodes **191** is formed on the upper passivation layer **180q**, and the above-described color filters **230** may extend according to a column of the pixel electrodes **191**.

Referring to FIG. 5, each pixel electrode **191** includes the first and second subpixel electrodes **191a** and **191b** that are spaced apart from each other with a gap **91** having a quadrangular belt shape therebetween, and the first and second subpixel electrodes **191a** and **191b** respectively include a basic electrode **199** shown in FIG. 6, or at least one modification thereof.

Next, the basic electrode **199** will be described in detail with reference to FIG. 6.

As shown in FIG. 6, the basic electrode **199** may be a quadrangle and may include a cross-shaped stem having a transverse stem **193** that crosses a longitudinal stem **192**. Also, the basic electrode **199** is divided into a first subregion Da, a second subregion Db, a third subregion Dc, and a fourth subregion Dd by the transverse stem **193** and the longitudinal stem **192**, and each subregion Da-Dd includes a plurality of first, second, third, and fourth branches **194a**, **194b**, **194c**, and **194d**.

The first branch **194a** extends obliquely from the transverse stem **193** or the longitudinal stem **192** in the upper-left direction, as shown in FIG. 7, and the second branch **194b** extends obliquely from the transverse stem **193** or the longitudinal stem **192** in the upper-right direction. Also, the third branch **194c** extends obliquely from the transverse stem **193** or the longitudinal stem **192** in the lower-left direction, and the fourth branch **194d** extends obliquely from the transverse stem **193** or the longitudinal stem **192** in the lower-right direction.

The first, second, third, and fourth branches **194a**, **194b**, **194c**, and **194d** form an angle of about 45 degrees or 135 degrees with the gate lines **121** or the transverse stem **193**. Also, the branches **194a**, **194b**, **194c**, and **194d** of two neighboring subregions Da, Db, Dc, and Dd may be crossed.

The width of the branches **194a**, **194b**, **194c**, and **194d** may be in the range of 2.5  $\mu\text{m}$  to 5.0  $\mu\text{m}$ , and the interval between the neighboring branches **194a**, **194b**, **194c**, and **194d** in one subregion Da, Db, Dc, and Dd may be in the range of 2.5  $\mu\text{m}$  to 5.0  $\mu\text{m}$ .

Also, referring to FIG. 7, the width of the branches **194a**, **194b**, **194c**, and **194d** may become wider approaching the transverse stem **193** or the longitudinal stem **192**, and the difference between the widest width and the narrowest width in one of the branches **194a**, **194b**, **194c**, and **194d** may be in the range of 0.2  $\mu\text{m}$  to 1.5  $\mu\text{m}$ .

Again, referring to FIG. 2, FIG. 3, FIG. 4, and FIG. 5, the first subpixel electrode **191a** includes one basic electrode **199** as shown in FIG. 6. The transverse stem **193** of the basic electrode **199** forming the first subpixel electrode **191a** expands downward and upward to form a first expansion **193a**, and the first expansion **193a** overlaps the first storage electrode **133a**. Also, the protrusion that protrudes downward to contact the first drain electrode **175a** is formed in the center of the downward edge of the first expansion **193a**.

The second subpixel electrode **191b** includes an upper electrode **191bu** and a lower electrode **191bb**, and each of the upper electrode **191bu** and the lower electrode **191bb** includes one basic electrode **199**. The upper electrode **191bu** and the lower electrode **191bb** are connected to each other through left and right connections **195b**.

The second subpixel electrode **191b** encloses the first subpixel electrode **191a** with the gap **91** therebetween. A portion of the center of the transverse stem of the lower electrode **191bb** extends upward and downward to form a second expansion **193bb** overlapping the second storage electrode **133b**. Also, the protrusion that protrudes downward to contact the second drain electrode **175b** is formed in the center of the downward edge of the second expansion **193bb**.

The area of the second subpixel electrode **191b** may be about 1.0 to 2.2 times the area of the first subpixel electrode **191a**.

Each first/second subpixel electrode **191a/191b** is connected to the first/second drain electrode **175a/175b** through the contact hole **185a/185b**, and receives data voltages from the first/second drain electrode **175a/175b**.

On the other hand, the upper electrode **191bu** may receive the data voltages directly from the second drain electrode **175b**. In this case, the second drain electrode **175b** extends to the upper electrode **191bu**, and a contact hole (not shown) through which the upper electrode **191bu** contacts the second drain electrode **175b** is required. In this case, the left and right connections **195b** are not necessary.

An alignment layer **11** is formed on the pixel electrodes **191**.

Next, the upper panel **200** will be described.

A common electrode **270** is formed on an insulating substrate **210**, and an alignment layer **21** is formed thereon.

Each alignment layer **11** and **21** may be a vertical alignment layer.

Finally, polarizers (not shown) may be provided on the outer surface of the display panels **100** and **200**.

The liquid crystal layer **3** disposed between the lower panel **100** and the upper panel **200** includes liquid crystal molecules **310** and polymers **350** and **370** having negative dielectric anisotropy.

The liquid crystal molecules **310** are pretilted by the polymers **350** and **370** for the long axis thereof to be parallel to the directions in which the first, second, third, and fourth branches **194a**, **194b**, **194c**, and **194d** of the first and second subpixel electrode **191a** and **191b** extend, and are aligned vertically with respect to the surface of the two panels **100** and **200**. Accordingly, the first and second subpixels PXa and PXb each include four subregions Da, Db, Dc, and Dd in which the liquid crystal molecules **310** are pretilted in different directions.

If the gate lines **121** are applied with the gate signals, the data voltage is applied to the first and second subpixel electrodes **191a** and **191b** through the data lines **171a** and **171b**. Then, the first and second subpixel electrodes **191a** and **191b** receive the data voltage and the common electrode **270** receives the common voltage, thereby generating an electric field in the liquid crystal layer **3**. Accordingly, the liquid crystal molecules **310** of the liquid crystal layer **3** are arranged in response to the electric field such that the major axes of the liquid crystal molecules **310** change direction to be perpendicular to the direction of the electric field. The degree to which the polarization of light incident to the liquid crystal layer **3** changes depends on the inclination degree of the liquid crystal molecules **310**, and the change in the polarization is represented by a change in the transmittance by a polarizer, thereby causing the liquid crystal display to display an image.

On the other hand, the edges of the branches **194a**, **194b**, **194c**, and **194d** distort the electric field to make the horizontal components perpendicular to the edges of the branches **194a**, **194b**, **194c**, and **194d**, and the alignment of the liquid crystal molecules **310** is determined by the horizontal components. Accordingly, the liquid crystal molecules **310** first tend to tilt in a direction perpendicular to the edges of the branches **194a**, **194b**, **194c**, and **194d**. However, the directions of the horizontal components of the electric field by the neighboring branches **194a**, **194b**, **194c**, and **194d** are opposite to each other and the intervals between the branches **194a**, **194b**, **194c**, and **194d** are narrow such that the liquid crystal molecules **310**, which tend to arrange in opposite directions, are tilted in the direction parallel to the directions in which the branches **194a**, **194b**, **194c**, and **194d** extend. Accordingly, if the liquid crystal molecules **310** are not initially pretilted in the direction in which the branches **194a**, **194b**, **194c**, and **194d** extend, the liquid crystal molecules **310** may be tilted in the directions in which the branches **194a**, **194b**, **194c**, and **194d** extend through two steps. However, in the present exemplary embodiment, the liquid crystal molecules **310** are already pretilted in a direction parallel to the directions of in which branches **194a**, **194b**, **194c**, and **194d** extend so the liquid crystal molecules **310** are pretilted in one step. Therefore, if the liquid crystal molecules **310** are pretilted, they may be tilted in the required direction in one step such that the response speed of the liquid crystal display may be improved.

Also, in an exemplary embodiment of the present invention, the branches **194a**, **194b**, **194c**, and **194d** extend in different directions in one pixel PX such that the liquid crystal molecules **310** are inclined in four directions. Therefore, the viewing angle of the liquid crystal display may be widened by varying the inclined directions of the liquid crystal molecules.

The first/second sub-pixel electrode **191a/191b** and the common electrode **270** form the liquid crystal capacitor Clca/Clcb to maintain an applied voltage even after the TFT is turned off. Also, the first and second storage electrodes **133a** and **133b** of the storage electrode line **131** respectively over-

lap the first and second subpixel electrodes **191a** and **191b** in the openings **188a** and **188b** to form the storage capacitors Csta and Cstb.

The loop **135** of the storage electrode line **131** overlaps the gap **91** of the pixel electrode **191** such that it functions as a shielding member to block light leakage between the first subpixel electrode **191a** and the second subpixel electrode **191b**. The loop **135** disposed between the data lines **171a** and **171b**, and the first subpixel electrode **191a**, may prevent crosstalk, which may reduce degradation of the display quality.

Also, in the structure of pixel electrode **191** in an exemplary embodiment of the present invention, the alignment of the liquid crystal molecules **310** may not be controlled near the longitudinal and the transverse stems of the first and second subpixel electrodes **191a** and **191b** so texture may be generated. Accordingly, the storage electrode line **131**, the longitudinal portion **137** of the storage electrode line **131**, and the first and second storage electrodes **133a** and **133b** overlap the transverse stem or the longitudinal stem of the first and second subpixel electrodes **191a** and **191b** such that the texture may be covered, so the aperture ratio may be increased.

On the other hand, the first subpixel electrode **191a** and the second subpixel electrode **191b** are applied with different data voltages through the different data lines **171a** and **171b**, and the voltage of the first subpixel electrode **191a** having a relatively small area is higher than the voltage of the second subpixel electrode **191b** having a relatively large area.

In this way, if the voltages of the first sub-pixel electrode **191a** and the second sub-pixel electrode **191b** are different from each other, the voltage applied to the first liquid crystal capacitor Clca formed between the first sub-pixel electrode **191a** and the common electrode **270** and the voltage applied to the second liquid crystal capacitor Clcb formed between the second sub-pixel electrode **191b** and the common electrode **270** are different from each other such that the declination angle of the liquid crystal molecules of the subpixels PXa and PXb are different from each other, and as a result the luminance of the two subpixels become different. Accordingly, if the voltages of the first and second liquid crystal capacitors Clca and Clcb are appropriately controlled, the images shown at the side may be approximate to the image shown at the front, that is to say, the gamma curve of the side may be approximately close to the gamma curve of the front, which may improve the side visibility.

Also, in an exemplary embodiment of the present invention, if the first subpixel electrode **191a** applied with the higher voltage is disposed in the center of the pixel PX, the first subpixel electrode **191a** is farther apart from the gate line **121** such that an overlapping portion therebetween is not generated, which may reduce a kick-back voltage and remove flicker.

Next, the alignment method for initially pretilting liquid crystal molecules **310** will be described with reference to FIG. 8.

FIG. 8 is a view showing a process for pretilting liquid crystal molecules using prepolymers, which are polymerized by light such as ultraviolet rays.

First, prepolymers **330**, such as monomers, which are hardened through polymerization by light such as ultraviolet rays, are inserted between the two display panels **100** and **200** along with the liquid crystal material. The prepolymers **330** may include reactive mesogen that is polymerized by light, such as ultraviolet rays.

Next, the first and second subpixel electrodes **191a** and **191b** receive the data voltages and the common electrode **270** of the upper panel **200** receives the common voltage to gen-

erate an electric field to the liquid crystal layer **3** between two display panels **100** and **200**. Thus, the liquid crystal molecules **310** of the liquid crystal layer **3** are inclined in a direction parallel to the length direction of the branches **194a**, **194b**, **194c**, and **194d** through two steps, as above-described, in response to the electric field, and the liquid crystal molecules **310** in one pixel PX are inclined in a total of four directions.

If the liquid crystal layer **3** is irradiated, for example, with ultraviolet rays, after the application of the electric field to the liquid crystal layer **3**, the prepolymers **330** are polymerized such that the first polymer **350** and the second polymer **370** are formed as shown in FIG. 8.

The first polymer **350** is formed in the liquid crystal layer **3**, and the second polymer **370** is formed close to the display panels **100** and **200**. The liquid crystal molecules **310** are pretilted in the directions in which the branches **194a**, **194b**, **194c**, and **194d** extend by the first and second polymers **350** and **370**.

Accordingly, the liquid crystal molecules **310** are arranged to pretilt in four different directions when no voltage is applied to the electrodes **191** and **270**.

Next, another exemplary embodiment of the present invention will be described with the reference to FIG. 9, FIG. 10, and FIG. 11.

FIG. 9 is a layout view of a liquid crystal display according to another exemplary embodiment of the present invention, FIG. 10 is a layout view of the liquid crystal display shown in FIG. 9 without the pixel electrode, and FIG. 11 is a top plan view showing the pixel electrode of the liquid crystal display shown in FIG. 9.

The layered structure of the liquid crystal display according to the present exemplary embodiment is almost the same as the layered structure of the liquid crystal display shown in FIG. 2, FIG. 3, FIG. 4, and FIG. 5.

Referring to FIG. 9, FIG. 10, and FIG. 11, the storage electrode line **131** includes left and right longitudinal portions **138** extending downward from the storage electrode line **131**, and a storage electrode **133** protruding in the right direction from the left longitudinal portion **138**. The storage electrode **133** has the wider width than that of the other portion for overlapping with a pixel electrode **191** to be described below.

The first drain electrode **175a** includes one end having a wide area extending a long distance upward, and the second drain electrode **175b** includes one end having a wide area extending a short distance upward.

The color filters (not shown) have through holes **235a** and **235b** where contact holes **185a** and **185b** pass through and an opening **233** disposed on the storage electrode **133**, and an upper passivation layer (not shown) and a lower passivation layer (not shown) have a plurality of contact holes **185a** and **185b** to expose the first and second drain electrodes **175a** and **175b**.

The pixel electrode **191** according to the present exemplary embodiment also includes first and second subpixel electrodes **191a** and **191b** that are spaced apart from each other with a gap **91** having a quadrangular belt shape, like the exemplary embodiment shown in FIG. 2, FIG. 3, FIG. 4, and FIG. 5.

The first subpixel electrode **191a** is made of one basic electrode **199**, as shown in FIG. 6. A transverse stem of the first subpixel electrode **191a** expands upward and downward to form an expansion **193c**, and the expansion **193c** overlaps the storage electrode **133** in an opening **233** to form a storage capacitor Csta.

The second subpixel electrode **191b** includes one basic electrode **199**, and a connection bridge **196b** enclosing the



first subpixel electrode **191a**, which is disposed below the second subpixel electrode **191b** with a gap **91** therebetween.

The left lower portion of the connection bridge **196b** protrudes to the right with a wide area to contact the second drain electrode **175b**. As shown in FIG. 9, the second subpixel electrode **191b** receives data voltages from the second drain electrode **175b** through the connection bridge **196b**.

The lower transverse edge of the connection bridge **196b** overlaps a portion of the gate line **121** to prevent the first subpixel electrode **191a** from being influenced by the gate signals of the gate lines **121**.

Both longitudinal edges of the connection bridge **196b** cover the data lines **171a** and **171b** to prevent cross talk between the data signal and the first subpixel electrode **191a**.

The width of the connection bridge **196b** may be in the range of 5.0  $\mu\text{m}$  to 15  $\mu\text{m}$ .

The storage electrode line **131** overlaps the gap **91** of the pixel electrode **191** to block light leakage between the first subpixel electrode **191a** and the second subpixel electrode **191b**. Also, the right and left longitudinal portions **138** of the storage electrode line **131** are disposed between the first subpixel electrode **191a** and the data lines **171a** and **171b**, to prevent cross talk between the data lines **171a** and **171b** and the first subpixel electrode **191a**.

The area of the second subpixel electrode **191b** may be about 1.25 to 2.75 times the area of the first subpixel electrode **191a**.

Unlike the above-described exemplary embodiment, according to the present exemplary embodiment, the first/second drain electrode **175a/175b** do not overlap the second/first subpixel electrode **191b/191a** that receive data voltages having different polarities from each other, but instead overlap only the first/second subpixel electrode **191a/191b** that receive data voltages having the same polarity such that a texture due to distortion of the electric field is not generated near the first and second drain electrodes **175a** and **175b** even though the first and second data lines **171a** and **171b** receive data voltages of opposite polarities. Accordingly, texture may be prevented, which may increase transmittance.

Also, according to the present exemplary embodiment, the contact holes **185a** and **185b** are disposed at edges or corners of the first and second subpixel electrodes **191a** and **191b** so that it may be easy to form color filters (not shown) by an inkjet printing process.

Like the above described exemplary embodiment, the liquid crystal molecules are inclined in four directions such that the viewing angle of the liquid crystal display may be increased, and the liquid crystal molecules are pretilted through the polymerization of the prepolymer such that the response speed may be improved. Also, the first and second subpixel electrodes **191a** and **191b** receive different data voltages, which may improve side visibility.

Next, another exemplary embodiment of the present invention will be described with reference to FIG. 12, FIG. 13, and FIG. 14.

FIG. 12 is a layout view of a liquid crystal display according to another exemplary embodiment of the present invention, FIG. 13 is a layout view of the liquid crystal display shown in FIG. 12 without the pixel electrode, and FIG. 14 is a top plan view showing the pixel electrode of the liquid crystal display shown in FIG. 12.

A liquid crystal display according to the present exemplary embodiment is almost the same as the liquid crystal display shown in FIG. 9, FIG. 10, and FIG. 11.

Referring to FIG. 12, FIG. 13, and FIG. 14, the wide end portion of the first drain electrode **175a** to apply the data voltage to the first subpixel electrode **191a** is disposed at the

right lower corner of the first subpixel PXa, and is connected to the first subpixel electrode **191a** through the contact hole **185a**. Accordingly, when forming the color filter (not shown) through an inkjet printing process, the process may be easily executed and the transmittance may be improved.

Also, the storage electrodes and the openings having a wide area to form the storage capacitors Csta and Cstb do not exist in the present exemplary embodiment, which may increase the aperture ratio.

Next, another exemplary embodiment of the present invention will be described with reference to FIG. 15, FIG. 16, and FIG. 17.

FIG. 15 is a layout view of a liquid crystal display according to another exemplary embodiment of the present invention, FIG. 16 is a layout view of the liquid crystal display shown in FIG. 15 except for the pixel electrode, and FIG. 17 is a top plan view showing the pixel electrode of the liquid crystal display shown in FIG. 15.

The layered structure of the liquid crystal display according to the present exemplary embodiment is almost the same as the layered structure of the liquid crystal display shown in FIG. 2, FIG. 3, FIG. 4, and FIG. 5.

Referring to FIG. 15, FIG. 16, and FIG. 17, the storage electrode line **131** includes left and right longitudinal portions **139** that extend upward and downward from the storage electrode line **131**, a transverse connection **132** connected between two longitudinal portions **139**, and a storage electrode **133c** protruding from the center of the transverse connection **132** to the lower direction and having a wide area.

The color filters (not shown) have through holes **235a** and **235b** where contact holes **185a** and **185b** pass through, and an opening **233** disposed on the storage electrode **133c**, and an upper passivation layer (not shown) and a lower passivation layer (not shown) have a plurality of contact holes **185a** and **185b** exposing the first and second drain electrodes **175a** and **175b**.

The pixel electrode **191** also includes the first and second subpixel electrodes **191a** and **191b** that are spaced apart from each other with a gap **91** having a quadrangular belt shape.

The second subpixel electrode **191b** includes an upper electrode **191bu** and a lower electrode **191bb**, and the upper electrode **191bu** and the lower electrode **191bb** are connected through left and right connections **195b**.

Two longitudinal portions **139** of the storage electrode line **131** overlap the gap **91** to block light leakage between the first subpixel electrode **191a** and the second subpixel electrode **191b** and prevent cross talk between the first subpixel electrode **191a** and the data lines **171a** and **171b**. Also, the transverse connection **132** of the storage electrode line **131** covers the texture near the transverse stem **193d** of the first subpixel electrode **191a**, which may improve the aperture ratio.

In the present exemplary embodiment, different from the exemplary embodiment shown in FIG. 2, FIG. 3, FIG. 4, and FIG. 5, a transverse stem **193du** of the upper electrode **191bu** is not disposed on the center of the upper electrode **191bu**, but is near the upper edge, and the transverse stem **193db** of the lower electrode **191bb** is disposed near the lower edge of the lower electrode **191bb**. Accordingly, as for each of the upper and lower electrodes **191bu** and **191bb**, two subregions among four subregions Da, Db, Dc, and Dd of the basic electrode **199** of FIG. 6 as above-described almost disappear and remain as dummies. However, all of the subregions Da, Db, Dc, and Dd still exist in the second subpixel electrode **191b** such that the liquid crystal molecules **310** may be inclined in four directions.

In this case, the area of the two remaining subregions Dc and Dd of the upper electrode **191bu** may be more than 1.5

times the area of the two subregions Da and Db, which become small. The area of the two remaining subregions Da and Db of the lower electrode **191bb** may be more than 1.5 times the area of the two subregions Dc and Dd, which may become small.

Also, the length between the upper edge and the lower edge of the two subregions Da and Db of the upper electrode **191bu** or two subregions Dc and Dd of the lower electrode **191bb**, which may become small, may be about 5  $\mu\text{m}$ .

Like the present exemplary embodiment, two subregions Da and Db of the upper electrode **191bu** or two subregions Dc and Dd of the lower electrode **191bb** overlap the gate line **121** as dummies such that the aperture ratio and the transmittance may be increased and texture may be covered near the transverse stems **193du** and **193db**.

The reason why the two subregions Da and Dd, which are almost eliminated but remain as dummies, will be described with reference to FIG. **18** and FIG. **19**.

FIG. **18** is a top plan view of a portion of a pixel electrode in a liquid crystal display according to another exemplary embodiment of the present invention, and FIG. **19** is a top plan view of the portion of the pixel electrode shown in FIG. **17**.

As shown in FIG. **18**, if two subregions Da and Db of the upper electrode **191bu** are altogether removed, a fringe field is generated in the direction **D1** vertical to the upper edge of the upper electrode **191bu**. Thus, disclination **DL** of the liquid crystal molecules **310** may be generated, which may generate a texture because the inclined direction **D2** of the liquid crystal molecules **310** in the two subregions Dc and Dd discord with the direction **D1** of the fringe field.

However, as shown in FIG. **19**, if the two subregions Da and Db are left as dummies at the top of the upper electrode **191bu**, the liquid crystal molecules **310** are inclined in the direction **D1** such that the horizontal inclination direction of the liquid crystal molecules **310** of the subregions Da and Db is the same as that of the liquid crystal molecules **310** of the subregions Dc and Dd, and thereby the texture may be weakened.

The longitudinal stems **192du** and **192db** of the upper and the lower electrodes **191bu** and **191bb** of the second subpixel electrode **191b** may be positioned near the left edge or the right edge of the pixel PX, instead of locating the transverse stems **193du** and **193db** of the upper or lower electrodes **191bu** or **191bb** of the second subpixel electrode **191b** near the upper and lower edges of the pixel PX like the present exemplary embodiment, such that a difference between the areas of the left subregions Da and Dc and the right subregions Db and Dd may be generated. In this case, the area of the subregions which become wide, may be more than 1.5 times the area of the subregions which become small.

Also, according to the present exemplary embodiment, differently from the exemplary embodiment shown in FIG. **2**, FIG. **3**, FIG. **4**, and FIG. **5**, the transverse stem **193** of the first subpixel electrode **191a** does not include the expanded portion, and the portion disposed under the longitudinal stem **192** expands at both sides to form a third expansion **192a**. Also, the a portion to contact with the first drain electrode **175a** is formed under the third expansion **192a**, and another wide portion for the contact with the second drain electrode **175b** is formed at the bottom of the longitudinal stem **192db** of the lower electrode **191bb** of the second subpixel electrode **191b**.

In the present exemplary embodiment, as in the previously described exemplary embodiment, the liquid crystal molecules are inclined in four directions so that the viewing angle of the liquid crystal display may be increased, and the liquid crystal molecules are pretilted by the polymerization of the prepolymer, which may improve the response speed. Also,

the first and second subpixel electrodes **191a** and **191b** receive different data voltages, which may improve side visibility.

Different from an exemplary embodiment of the present invention, a light alignment method in which light such as ultraviolet rays is obliquely irradiated to the alignment layers **11** and **21** may be used to control the alignment direction and the alignment angle of the liquid crystal molecules **310** to form a plurality of subregions Da, Db, Dc, and Dd where the liquid crystal molecules **310** are inclined in different directions. In this case, the branches **194a**, **194b**, **194c**, and **194d** of the pixel electrodes **191** are not necessary to increase the aperture ratio and improve the response time due to the pretilt of the liquid crystal molecules **310**, which is generated by light alignment.

It will be apparent to those skilled in the art that various modifications and variation can be made in the present invention without departing from the spirit or scope of the invention. Thus, it is intended that the present invention cover the modifications and variations of this invention provided they come within the scope of the appended claims and their equivalents.

What is claimed is:

1. A liquid crystal display, comprising:

a pixel electrode comprising subregions each comprising branches, a branch of one of the subregions and a branch of another of the subregions extending in different directions;

a common electrode facing the pixel electrode;

a data line extending in a longitudinal direction;

a storage electrode line comprising a first portion extending across the pixel electrode and a second portion connected to the first portion; and

a liquid crystal layer disposed between the pixel electrode and the common electrode, the liquid crystal layer comprising liquid crystal molecules, wherein,

the pixel electrode comprises a transverse stem extending in a transverse direction and a longitudinal stem extending in the longitudinal direction, the transverse stem and the longitudinal stem extending along a boundary between the subregions, and

the first portion of the storage electrode line overlaps the transverse stem, and the second portion of the storage electrode line overlaps the longitudinal stem.

2. The liquid crystal display of claim 1, wherein the liquid crystal molecules are aligned to pretilt according to the directions in which the branches extend.

3. The liquid crystal display of claim 2, further comprising: an alignment layer disposed on the pixel electrode or the common electrode; and

a polymer disposed adjacent to the alignment layer, the polymer to facilitate the pretilting of the liquid crystal molecules.

4. The liquid crystal display of claim 3, wherein the polymers comprise an irradiated prepolymer, the prepolymer comprising a monomer.

5. The liquid crystal display of claim 1, wherein the width of one of the branches is in the range of 2.5  $\mu\text{m}$  to 5.0  $\mu\text{m}$ .

6. The liquid crystal display of claim 5, wherein the interval between neighboring branches is in the range of 2.5  $\mu\text{m}$  to 5.0  $\mu\text{m}$ .

7. The liquid crystal display of claim 6, wherein the branches extend from the transverse stem or the longitudinal stem.

8. The liquid crystal display of claim 1, wherein the interval between neighboring branches is in the range of 2.5  $\mu\text{m}$  to 5.0  $\mu\text{m}$ .

15

9. The liquid crystal display of claim 8, wherein the branches extend from the transverse stem or the longitudinal stem.

10. The liquid crystal display of claim 1, wherein the branches extend from the transverse stem or the longitudinal stem.

11. The liquid crystal display of claim 1, wherein a branch of one of the subregions is substantially perpendicular to a branch of a neighboring one of the subregions.

12. The liquid crystal display of claim 1, wherein:

the pixel electrode comprises a first subpixel electrode and a second subpixel electrode; and

each of the first subpixel electrode and the second subpixel electrode is connected to a respective switching element.

13. The liquid crystal display of claim 1, wherein the width of the transverse stem is different from the width of the longitudinal stem.

14. The liquid crystal display of claim 13, wherein the width of the transverse stem is greater than the width of the longitudinal stem.

15. The liquid crystal display of claim 14, wherein the width of the first portion of the storage electrode line is different from the width of the second portion of the storage electrode line.

16. The liquid crystal display of claim 15, wherein the width of the first portion of the storage electrode line is greater than the width of the second portion of the storage electrode line.

17. The liquid crystal display of claim 1, wherein the width of the first portion of the storage electrode line is different from the width of the second portion of the storage electrode line.

18. The liquid crystal display of claim 17, wherein the width of the first portion of the storage electrode line is greater than the width of the second portion of the storage electrode line.

19. The liquid crystal display of claim 1, further comprising a passivation layer disposed under the pixel electrode, the passivation layer comprising a contact hole overlapping at least one of the transverse stem and the longitudinal stem of the pixel electrode.

20. The liquid crystal display of claim 19, wherein the contact hole is disposed at an intersection of the transverse stem and the longitudinal stem of the pixel electrode.

21. The liquid crystal display of claim 19, further comprising a drain electrode disposed under the passivation layer, wherein the contact hole exposes the drain electrode.

22. The liquid crystal display of claim 1, wherein the storage electrode transmits a common voltage.

23. The liquid crystal display of claim 22, wherein the width of the first portion of the storage electrode line is different from the width of the second portion of the storage electrode line.

24. The liquid crystal display of claim 23, wherein the width of the first portion of the storage electrode line is greater than the width of the second portion of the storage electrode line.

25. A liquid crystal display, comprising:

a pixel electrode comprising a first subpixel electrode and a second subpixel electrode separated from the first subpixel by a gap;

a common electrode facing the pixel electrode;

a data line extending in a longitudinal direction;

a storage electrode line to transmit a common voltage, comprising a first portion extending across at least one of

16

the first subpixel electrode and the second subpixel electrode, and a second portion connected to the first portion; and

a liquid crystal layer disposed between the pixel electrode and the common electrode, the liquid crystal layer comprising liquid crystal molecules, wherein,

each of the first subpixel electrode and the second subpixel electrode comprises subregions comprising branches, a branch of one of the subregions and a branch of another of the subregions of each of the first subpixel electrode and the second subpixel electrode extending in different directions,

at least one of the first subpixel electrode and the second subpixel electrode comprises a transverse stem extending in a transverse direction and a longitudinal stem extending in the longitudinal direction, the transverse stem and the longitudinal stem extending along a boundary between the subregions,

the first portion of the storage electrode line overlaps the transverse stem of at least one of the first subpixel electrode and the second subpixel electrode, and the second portion of the storage electrode line overlaps the longitudinal stem of at least one of the first subpixel electrode and the second subpixel electrode, and

the area of at least one of the subregions of the first subpixel electrode is different from the area of at least one of the subregions of the second subpixel electrode.

26. The liquid crystal display of claim 25, wherein the liquid crystal molecules are aligned to pretilt according to the directions in which the branches extend.

27. The liquid crystal display of claim 26, further comprising:

an alignment layer disposed on the pixel electrode or the common electrode; and

a polymer disposed adjacent to the alignment layer, the polymer to facilitate the pretilting of the liquid crystal molecules.

28. The liquid crystal display of claim 27, wherein the polymers comprise an irradiated prepolymer, the prepolymer comprising a monomer.

29. The liquid crystal display of claim 25, wherein the width of one of the branches is in the range of 2.5  $\mu\text{m}$  to 5.0  $\mu\text{m}$ .

30. The liquid crystal display of claim 29, wherein the interval between neighboring branches is in the range of 2.5  $\mu\text{m}$  to 5.0  $\mu\text{m}$ .

31. The liquid crystal display of claim 30, wherein the branches extend from the transverse stem or the longitudinal stem.

32. The liquid crystal display of claim 25, wherein the interval between neighboring branches is in the range of 2.5  $\mu\text{m}$  to 5.0  $\mu\text{m}$ .

33. The liquid crystal display of claim 32, wherein the branches extend from the transverse stem or the longitudinal stem.

34. The liquid crystal display of claim 25, wherein the branches extend from the transverse stem or the longitudinal stem.

35. The liquid crystal display of claim 25, wherein a branch of one of the subregions is substantially perpendicular to a branch of a neighboring one of the subregions.

36. The liquid crystal display of claim 25, wherein:

the pixel electrode comprises a first subpixel electrode and a second subpixel electrode; and

each of the first subpixel electrode and the second subpixel electrode is connected to a respective switching element.

17

37. The liquid crystal display of claim 25, wherein a voltage applied to the first subpixel electrode is different from a voltage applied to the second subpixel electrode.

38. The liquid crystal display of claim 37, wherein:

the voltage applied to the first subpixel electrode is higher than the voltage applied to the second subpixel electrode; and

the area of at least one of the subregions of the second subpixel electrode is greater than the area of at least one of the subregions of the first subpixel electrode.

39. The liquid crystal display of claim 25, wherein the width of the transverse stem is different from the width of the longitudinal stem.

40. The liquid crystal display of claim 39, wherein the width of the transverse stem is greater than the width of the longitudinal stem.

41. The liquid crystal display of claim 40, wherein: the width of the first portion of the storage electrode line is different from the width of the second portion of the storage electrode line.

42. The liquid crystal display of claim 41, wherein the width of the first portion of the storage electrode line is greater than the width of the second portion of the storage electrode line.

43. The liquid crystal display of claim 25, wherein the width of the first portion of the storage electrode line is different from the width of the second portion of the storage electrode line.

44. The liquid crystal display of claim 43, wherein the width of the first portion of the storage electrode line is greater than the width of the second portion of the storage electrode line.

45. The liquid crystal display of claim 25, further comprising a contact hole overlapping at least one of the transverse

18

stem and the longitudinal stem of the at least one of the first subpixel electrode and the second subpixel electrode.

46. The liquid crystal display of claim 45, wherein the contact hole is disposed at an intersection of the transverse stem and the longitudinal stem of the at least one of the first subpixel electrode and the second subpixel electrode.

47. The liquid crystal display of claim 45, further comprising:

a passivation layer disposed under the pixel electrode; and a drain electrode disposed under the passivation layer, wherein the contact hole is formed in the passivation layer and exposes the drain electrode.

48. The liquid crystal display of claim 25, wherein the area of at least one of the subregions is different from the area of at least one of the remaining subregions in any one subpixel electrode of the first subpixel electrode and the second subpixel electrode.

49. The liquid crystal display of claim 25, wherein the width of the storage electrode line is wider than the width of at least one of the transverse stem and the longitudinal stem.

50. The liquid crystal display of claim 25, wherein end portions of at least two of the branches of at least one of the first subpixel electrode and the second subpixel electrode are connected by a connection.

51. The liquid crystal display of claim 50, wherein the connected end portions of the at least two of the branches are adjacent to a gate line that crosses the data line and extends in a transverse direction.

52. The liquid crystal display of claim 25, wherein four of the subregions are included in each of the first subpixel electrode and the second subpixel electrode.

53. The liquid crystal display of claim 52, wherein a branch of each of the subregions is substantially perpendicular to a branch of a neighboring one of the subregions.

\* \* \* \* \*

专利名称(译)	液晶显示器		
公开(公告)号	<a href="#">US8253908</a>	公开(公告)日	2012-08-28
申请号	US13/230329	申请日	2011-09-12
[标]申请(专利权)人(译)	三星电子株式会社		
申请(专利权)人(译)	SAMSUNG ELECTRONICS CO. , LTD.		
当前申请(专利权)人(译)	三星DISPLAY CO. , LTD.		
[标]发明人	JUNG MEE HYE SOHN JI WON LYU JAE JIN CHAI CHONG CHUL		
发明人	JUNG, MEE-HYE SOHN, JI-WON LYU, JAE-JIN CHAI, CHONG-CHUL		
IPC分类号	G02F1/1343		
CPC分类号	G02F1/133753 G02F1/134309 G02F1/1337 G02F1/134336 G02F1/13624 G02F2001/133715 G02F1/133788 G02F1/136227 G02F1/136286 G02F1/1368 G02F2001/133742		
优先权	1020080029090 2008-03-28 KR		
其他公开文献	US20110317119A1		
外部链接	<a href="#">Espacenet</a> <a href="#">USPTO</a>		

#### 摘要(译)

液晶显示器技术领域本发明涉及一种液晶显示器，包括：像素电极，包括：第一子像素电极和第二子像素电极，其间隔开间隙；公共电极，面对像素电极；以及液晶层，形成在像素电极和像素电极之间。公共电极包括多个液晶分子。第一子像素电极和第二子像素电极包括多个分支，并且第一子像素电极和第二子像素电极中的每一个包括多个子区域。分支在不同的子区域中以不同的方向延伸。

