



US009477121B2

(12) **United States Patent**
Song

(10) **Patent No.:** **US 9,477,121 B2**
(45) **Date of Patent:** **Oct. 25, 2016**

(54) **LIQUID CRYSTAL DISPLAY AND THIN FILM TRANSISTOR ARRAY PANEL THEREFOR**

(71) Applicant: **SAMSUNG DISPLAY CO., LTD.**,
Yongin, Gyeonggi-do (KR)

(72) Inventor: **Jang-Kun Song**, Seoul (KR)

(73) Assignee: **SAMSUNG DISPLAY CO., LTD.**,
Yongin, Gyeonggi-Do (KR)

(*) Notice: Subject to any disclaimer, the term of this patent is extended or adjusted under 35 U.S.C. 154(b) by 0 days.

(21) Appl. No.: **14/197,781**

(22) Filed: **Mar. 5, 2014**

(65) **Prior Publication Data**

US 2014/0184993 A1 Jul. 3, 2014

Related U.S. Application Data

(63) Continuation of application No. 13/655,651, filed on Oct. 19, 2012, now Pat. No. 8,698,990, and a continuation of application No. 12/820,687, filed on Jun. 22, 2010, now Pat. No. 8,310,643, and a

(Continued)

(30) **Foreign Application Priority Data**

Jun. 28, 2002 (KR) 10-2002-0036979

(51) **Int. Cl.**
G02F 1/13 (2006.01)
G02F 1/1343 (2006.01)

(Continued)

(52) **U.S. Cl.**
CPC **G02F 1/13439** (2013.01); **G02F 1/13624** (2013.01); **G02F 1/133707** (2013.01); **G02F 1/136213** (2013.01); **G02F 2001/134318** (2013.01)

(58) **Field of Classification Search**
CPC G02F 1/13439
See application file for complete search history.

(56) **References Cited**

U.S. PATENT DOCUMENTS

4,878,742 A 11/1989 Ohkubo et al.
5,162,931 A 11/1992 Holmberg

(Continued)

FOREIGN PATENT DOCUMENTS

CN 1270383 10/2000
CN 1284709 2/2001

(Continued)

OTHER PUBLICATIONS

Sharp Corporation v. Samsung Electronics, Co., Ltd., Samsung Electronics America, Inc., and Samsung Telecommunications America, LLP., Case No. 2-07CV-330; Report on the Filing or Determination of an Action Regarding a Patent or Trademark dated Aug. 6, 2007.

(Continued)

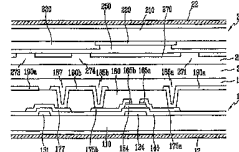
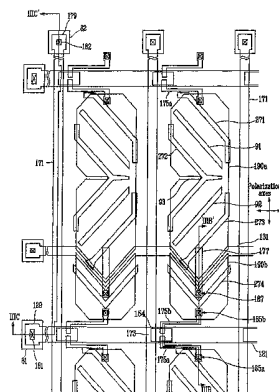
Primary Examiner — James Dudek

(74) *Attorney, Agent, or Firm* — F. Chau & Associates, LLC

(57) **ABSTRACT**

A liquid crystal display (LCD) is provided, which includes: first and second gate lines, a data line intersecting the gate lines, first to fourth drain electrodes located near the intersections between the first and second gate lines and the data line, and a coupling electrode. First to fourth pixel electrodes are also provided, and the first pixel electrode is connected to the coupling electrode while the fourth pixel electrode overlaps the coupling electrode. The LCD further includes a common electrode opposite the pixel electrodes, a liquid crystal layer interposed between the pixel electrodes and the common electrode, and a domain partitioning member formed on at least one of the pixel electrode and the common electrode. Two long edges of the domains are angled with respect to the first and the second gate lines or the data line substantially by about 45°.

9 Claims, 7 Drawing Sheets



Related U.S. Application Data

continuation of application No. 11/845,438, filed on Aug. 27, 2007, now Pat. No. 8,743,331, and a continuation of application No. 11/043,157, filed on Jan. 27, 2005, now Pat. No. 7,280,177, and a continuation of application No. 10/602,710, filed on Jun. 25, 2003, now Pat. No. 6,850,302.

(51) **Int. Cl.**

G02F 1/1337 (2006.01)
G02F 1/1362 (2006.01)

(56) **References Cited**

U.S. PATENT DOCUMENTS

5,337,173 A	8/1994	Atsumi et al.	
5,434,690 A	7/1995	Hisatake et al.	
5,608,556 A	3/1997	Koma	
5,870,075 A *	2/1999	Yamazaki G02F 1/13624 345/690
5,870,611 A	2/1999	London Shrader et al.	
5,923,310 A	7/1999	Kim	
5,936,686 A	8/1999	Okumura et al.	
6,028,577 A	2/2000	Sakamoto	
6,040,882 A	3/2000	Jun et al.	
6,069,600 A	5/2000	Saishu et al.	
6,104,450 A	8/2000	Hiraishi	
6,229,589 B1	5/2001	Koma	
6,313,899 B1	11/2001	Wu et al.	
6,335,776 B1 *	1/2002	Kim et al. 349/129
6,342,938 B1	1/2002	Song et al.	
6,356,335 B1	3/2002	Kim et al.	
6,384,889 B1	5/2002	Miyachi et al.	
6,400,440 B1	6/2002	Colgan et al.	
6,661,488 B1	12/2003	Takeda et al.	
6,704,083 B1	3/2004	Kim et al.	
6,710,825 B2	3/2004	Kubo et al.	
6,710,837 B1	3/2004	Song et al.	
6,724,359 B2	4/2004	Yamamoto et al.	
6,724,450 B1	4/2004	Knoll et al.	
6,741,314 B2	5/2004	Song	
6,999,134 B2	2/2006	Lee et al.	
2004/0125253 A1	7/2004	Kim et al.	
2004/0125295 A1	7/2004	Kim et al.	

FOREIGN PATENT DOCUMENTS

CN	1291786	4/2001
EP	0568355	11/1993
EP	0621501	10/1994
EP	0884626	12/1998
JP	62044717	2/1987
JP	02204727	8/1990
JP	05-019298	1/1993
JP	06301036	10/1994
JP	07-020469	1/1995
JP	07013164	1/1995
JP	07028063	1/1995

JP	07064089	3/1995
JP	08076125	3/1995
JP	07199190	8/1995
JP	07230097	8/1995
JP	07311383	11/1995
JP	08006052	1/1996
JP	08029812	2/1996
JP	08101399	4/1996
JP	08-179341	7/1996
JP	08201777	8/1996
JP	08220511	8/1996
JP	08220524	8/1996
JP	09160061	6/1997
JP	09179141	7/1997
JP	11109335	4/1999
JP	11-352490	12/1999
JP	11352489	12/1999
JP	2000137227	5/2000
JP	2001021892	1/2001
JP	2001-184012	7/2001
JP	2001330852	11/2001
JP	2002122886	4/2002
JP	2002-162627	6/2002
JP	2005-019298	1/2005
KR	1997-0005638	2/1997
KR	1019990036740	5/1999
KR	100196202	6/1999
KR	10-0218584	9/1999
KR	1020000011961	2/2000
KR	1020000031955	6/2000
WO	9408331	4/1994

OTHER PUBLICATIONS

Sharp Corporation v. Samsung Electronics, Co., Ltd., Samsung Electronics America, Inc., and Samsung Telecommunications America, LLP., Case No. 2-07CV-330; Complaint for Patent Infringement dated Aug. 6, 2007.

Sharp Corporation v. Samsung Electronics, Co., Ltd., Samsung Electronics America, Inc., and Samsung Telecommunications America, LLP., Case No. 2-07CV-330; Plaintiff Sharp Corporation's Answer and Counter Claims of Defendant's Counter Claims dated Feb. 5, 2008.

Sharp Corporation v. Samsung Electronics, Co., Ltd., Samsung Electronics America, Inc., and Samsung Telecommunications America, LLP., Case No. 2-07CV-330; Items Filed Under Seal.

Sharp Corporation v. Samsung Electronics, Co., Ltd., Samsung Electronics America, Inc., and Samsung Telecommunications America, LLP., Case No. 2-07CV-330; Defendants Samsung Electronics Co., Ltd., Samsung Electronics America, Inc., and Samsung Telecommunications America, LLP, Answer and Counter Claims dated Nov. 7, 2007.

Sharp Corporation v. Samsung Electronics, Co., Ltd., Samsung Electronics America, Inc., and Samsung Telecommunications America, LLP., Case No. 2-07CV-330; Defendants Samsung Electronics Co., Ltd., Samsung Electronics America, Inc., and Samsung Telecommunications America, LLP, Answer to Sharp's Declaratory Judgement Counterclaims dated Feb. 28, 2008.

* cited by examiner

FIG. 1

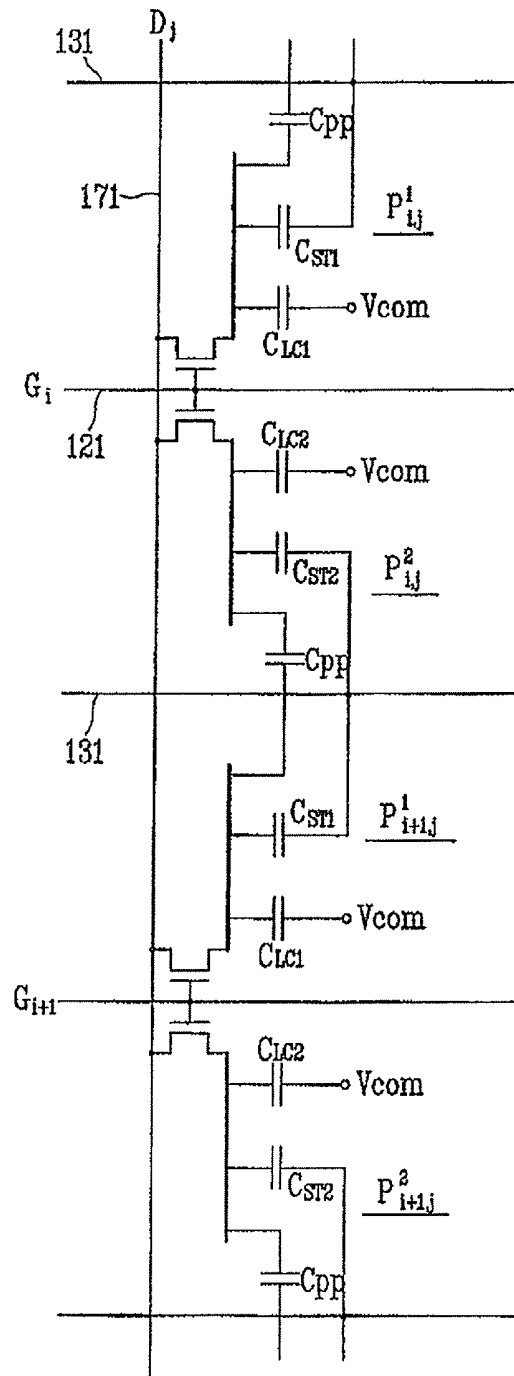


FIG. 2

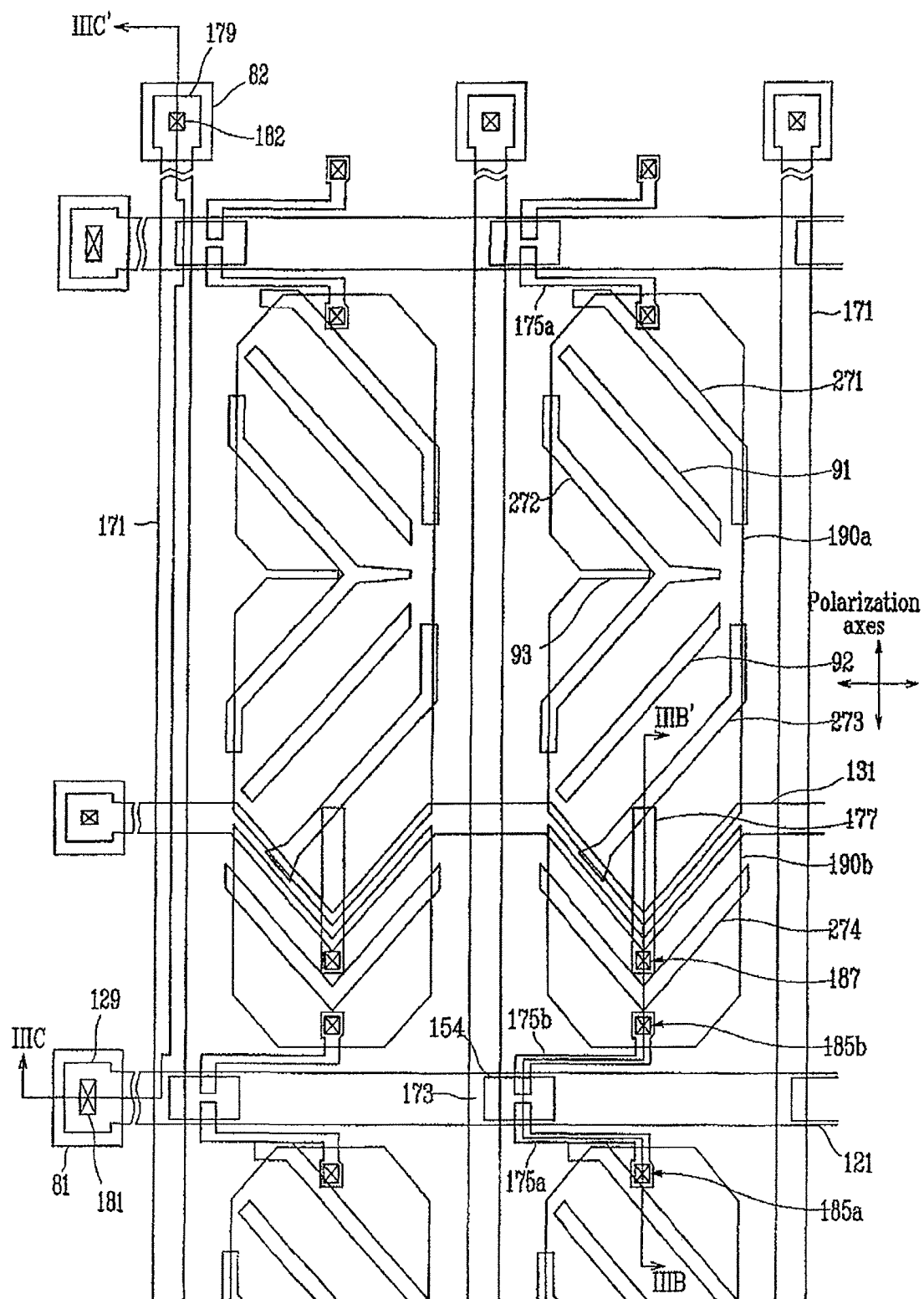


FIG. 3A

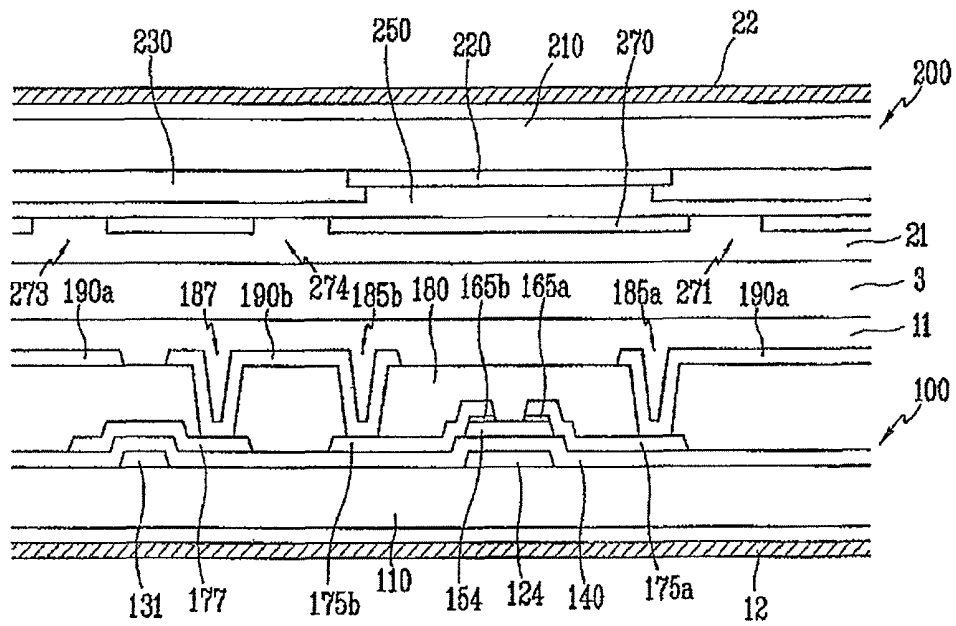


FIG. 3B

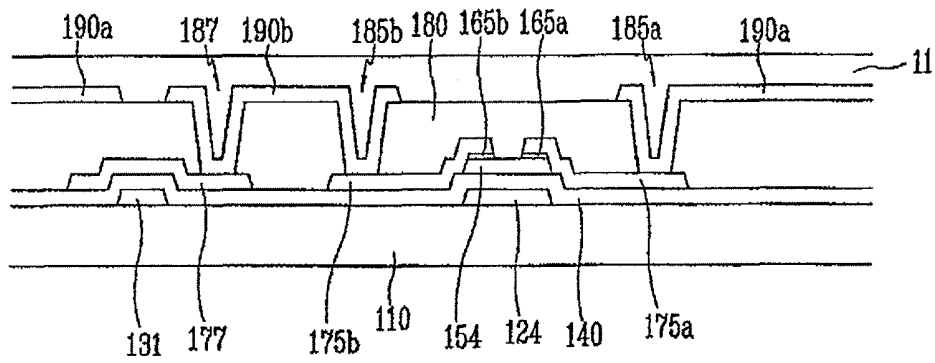


FIG. 3C

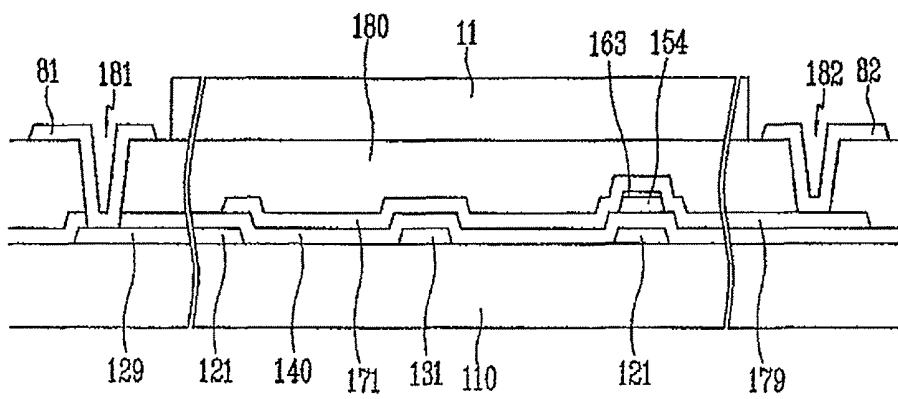


FIG. 4

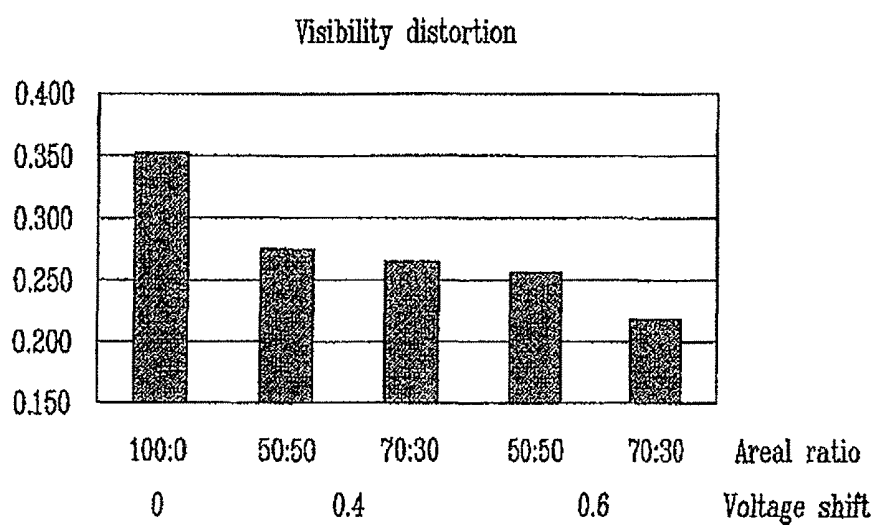


FIG.5(PRIOR ART)

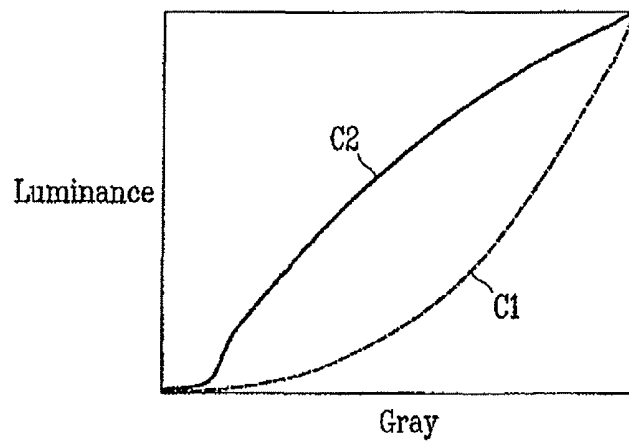


FIG.6

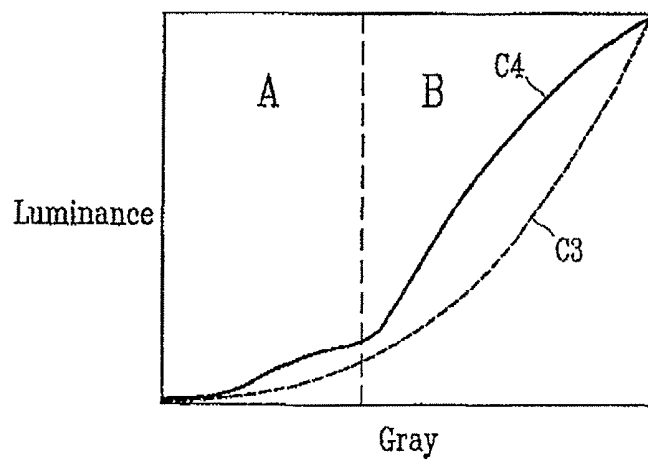


FIG. 7(PRIOR ART)

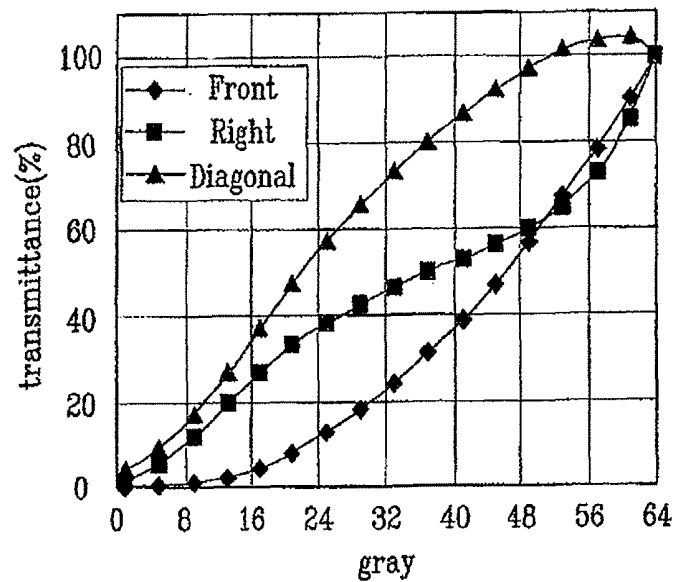
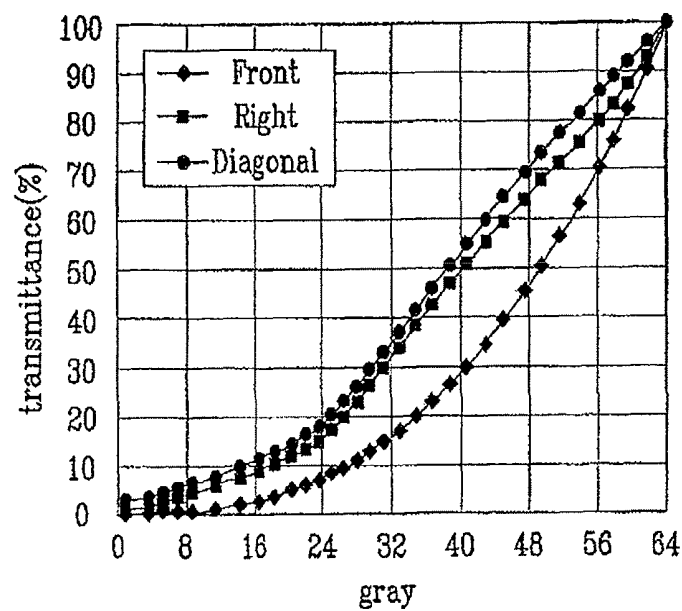


FIG. 8



LIQUID CRYSTAL DISPLAY AND THIN FILM TRANSISTOR ARRAY PANEL THEREFOR

CROSS-REFERENCE TO RELATED APPLICATIONS

This application is a continuation of U.S. patent application Ser. No. 13/655,651, filed Oct. 19, 2012, which is a continuation of U.S. patent application Ser. No. 12/820,687, filed Jun. 22, 2010, issued as U.S. Pat. No. 8,310,643 on Nov. 13, 2012, which is a continuation of U.S. patent application Ser. No. 11/845,438, filed Aug. 27, 2007, which is a continuation of U.S. patent application Ser. No. 11/043,157, filed Jan. 27, 2005, issued as U.S. Pat. No. 7,280,177 on Oct. 9, 2007, which is a continuation of U.S. patent application Ser. No. 10/602,710, filed on Jun. 25, 2003, issued as U.S. Pat. No. 6,850,302 on Feb. 1, 2005, which claims priority to Korean Patent Application No. 10-2002-0036979, filed Jun. 28, 2002. The disclosures of the above-cited applications are incorporated by reference herein in their entireties.

BACKGROUND OF THE INVENTION

(a) Field of the Invention

The present invention relates to a liquid crystal display, and in particular, to a panel for the liquid crystal display.

(b) Description of Related Art

Generally, a liquid crystal display (LCD) includes a liquid crystal (LC) panel assembly including two panels provided with two kinds of field generating electrodes such as pixel electrodes and a common electrode and a LC layer with dielectric anisotropy interposed therebetween. The variation of the voltage difference between the field generating electrodes, i.e., the variation in the strength of an electric field generated by the electrodes changes the transmittance of the light passing through the LCD, and thus desired images are obtained by controlling the voltage difference between the electrodes.

However, the LCD involves a critical shortcoming of the narrow viewing angle. In order to overcome such a problem, various techniques for widen the viewing angle have been developed, and among them, a technique of forming cutouts or protrusions at the pixel electrodes and the common electrode while aligning the LC molecules vertical to the upper and lower panels is the strongest candidate for the wide viewing angle technique.

The cutouts provided at the respective pixel electrodes and the common electrode generate fringe fields, which control the tilt directions of the LC molecules are controlled to thereby widen the viewing angle.

The protrusions provided on the respective pixel electrodes and the common electrode deform the electric field, and the tilt directions of the LC molecules are controlled due to the deformed electric field to thereby widen the viewing angle.

Alternatively, the cutouts are provided at the pixel electrodes of a lower panel while protrusions are provided at the common electrode of an upper panel. Fringe fields generated by the cutouts and the protrusions controls the tilt directions of the LC molecules to thereby form multiple domains.

The multi-domain LCD involves a very excellent contrast-based viewing angle or gray inversion-based viewing angle of up to 80° or more in all directions. The contrast-based viewing angle is defined as a viewing angle showing the contrast ratio of 1:10, and the gray inversion-based

viewing angle is defined by the limit angle of the inter-gray luminance inversion. However, the multi-domain LCD shows a lateral gamma curve distortion that the front gamma curve and the lateral gamma curve do not agree to each other is made to exhibit deteriorated left and right visibility even compared with the twisted nematic (TN) mode LCD. For instance, the patterned vertically aligned (PVA) mode LCD having cutouts for partitioning domains becomes brighter and color-shifts to white as it goes to the lateral sides. In a serious case, the difference between the bright grays is eradicated, and hence, the images become conglomerated. However, it becomes a critical matter to improve the visibility more and more as the LCD has been recently used for the multimedia purpose to display still or moving picture images.

SUMMARY OF THE INVENTION

A liquid crystal display is provided, which includes: a first insulating substrate; first and second signal lines formed on the first insulating substrate; a third signal line formed on the first insulating substrate and crossing the first and the second signal lines; a first thin film transistor connected to the first and the third signal lines; a second thin film transistor connected to the second and the third signal lines; a first pixel electrode connected to the first thin film transistor; a second pixel electrode connected to the second thin film transistor; a second insulating substrate facing the first insulating substrate; a common electrode formed on the second insulating substrate; a liquid crystal layer interposed between the first and the second insulating substrates and including a first liquid crystal region on the first pixel electrode and a second liquid crystal region on the second pixel electrode; and a domain partitioning member formed on at least one of the first and the second insulating substrates for partitioning the first and the second liquid crystal regions into a plurality of domains, respectively, wherein the domains of each of the first and the second liquid crystal regions includes a first directional domain and a second directional domain, the average directors of liquid crystal molecules in the first and the second directional domains are angled with respect to the first or the second signal line by a predetermined degree of about 0-90°, and the first pixel electrode and the second pixel electrode are capacitively coupled.

It is preferable that the first pixel electrode occupies about 50-80% of an entire area of the first and the second pixel electrodes, and the second thin film transistor is activated after the first thin film transistor is activated.

The threshold voltage of the first pixel electrode is preferably lower than the threshold voltage of the second pixel electrode by about 0.4-1.0V.

The liquid crystal display may further includes a storage electrode line formed on the first substrate and forming storage capacitors along with the first and the second pixel electrodes.

The average director of the liquid crystal molecules in the first and the second directional domains are preferably angled with respect to the first or the second signal line by about 45°.

Preferably, the liquid crystal display further includes a first polarizer placed on an outer surface of the first substrate and having a polarizing axis parallel to the first or the second signal line, and a second polarizer placed on an outer surface of the second substrate and having a polarizing axis crossing the polarizing axis of the first polarizing plate.

A thin film transistor array panel is provided, which includes: an insulating substrate; first and second gate lines formed on the substrate; a gate insulating layer formed on the first and the second gate lines; a semiconductor layer formed on the gate insulating layer; a data line formed at least on the semiconductor layer and intersecting the gate lines; first and second drain electrodes formed at least on the semiconductor layer and located near the intersection between the first gate line and the data line; third and fourth drain electrodes formed at least on the semiconductor layer and located near the intersection between the second gate line and the data line; a coupling electrode formed on the gate insulating layer; a passivation layer formed on the data line, the first to the fourth drain electrodes, and the coupling electrode and having a plurality of contact holes exposing the first to the fourth drain electrodes and the coupling electrode; a first pixel electrode formed on the passivation layer and connected to the first drain electrode and the coupling electrode; a second pixel electrode formed on the passivation layer and connected to the second drain electrode; a third pixel electrode formed on the passivation layer and connected to the third drain electrode; and a fourth pixel electrode formed on the passivation layer and connected to the fourth drain electrode and partially overlapping the coupling electrode, wherein at least one of the first and the fourth pixel electrodes has an oblique cutout.

A liquid crystal display is provided, which includes: a first insulating substrate; first and second gate lines formed on the first substrate; a gate insulating layer formed on the first and the second gate lines; a semiconductor layer formed on the gate insulating layer; a data line formed at least on the semiconductor layer and intersecting the gate lines; first and second drain electrodes formed at least on the semiconductor layer and located near the intersection between the first gate line and the data line; third and fourth drain electrodes formed at least on the semiconductor layer and located near the intersection between the second gate line and the data line; a coupling electrode formed on the gate insulating layer; a passivation layer formed on the data line, the first to the fourth drain electrodes, and the coupling electrode and having a plurality of contact holes exposing the first to the fourth drain electrodes and the coupling electrode; a first pixel electrode formed on the passivation layer and connected to the first drain electrode and the coupling electrode; a second pixel electrode formed on the passivation layer and connected to the second drain electrode; a third pixel electrode formed on the passivation layer and connected to the third drain electrode; a fourth pixel electrode formed on the passivation layer and connected to the fourth drain electrode and partially overlapping the coupling electrode; a second insulating substrate facing the first insulating substrate; a common electrode formed on the second insulating substrate; a liquid crystal layer interposed between the first and the second insulating substrates; and a domain partitioning member formed on at least one of the first and the second insulating substrates and partitioning the liquid crystal layer into a plurality of domains, wherein two long edges of the domains are angled with respect to the gate line or the data line substantially by about 45°.

Preferably, the first pixel electrode occupies about 50-80% of an entire area of the first and the fourth pixel electrodes and the fourth pixel electrode is supplied with a voltage after the first pixel electrode is supplied with a voltage.

The threshold voltage of the first pixel electrode is preferably lower than the threshold voltage of the fourth pixel electrode by about 0.4-1.0V.

BRIEF DESCRIPTION OF THE DRAWINGS

The above and other advantages of the present invention will become more apparent by describing preferred embodiments thereof in detail with reference to the accompanying drawings in which:

FIG. 1 is a circuit diagram of an LCD according to an embodiment of the present invention;

FIG. 2 is a layout view of an LCD according to an embodiment of the present invention;

FIG. 3A is a sectional view of the LC panel assembly shown in FIG. 2 taken along the line IIIB-IIIB';

FIG. 3B is a sectional view of a TFT array panel shown in FIG. 3A, which is a portion of the LC panel assembly shown in FIG. 3A except for a color filter array panel and polarization films;

FIG. 3C is a sectional view of a TFT array panel shown in FIG. 2 taken along the line IIIC-IIIC';

FIG. 4 is a graph illustrating the distortion in the visibility as a function of the voltage shift and the domain ratio;

FIG. 5 is a graph illustrating gamma curves for a front view and a lateral view of a conventional patterned-vertically-aligned (PVA) LCD;

FIG. 6 is a graph illustrating gamma curves for a front view and a lateral view of an LCD according to an embodiment of the present invention;

FIG. 7 illustrates measured gamma curves of a conventional PVA mode LCD; and

FIG. 8 illustrates measured gamma curves of an LCD according to an embodiment of the present invention.

DETAILED DESCRIPTION OF PREFERRED EMBODIMENTS

The present invention now will be described more fully hereinafter with reference to the accompanying drawings, in which preferred embodiments of the invention are shown. The present invention may, however, be embodied in many different forms and should not be construed as limited to the embodiments set forth herein.

In the drawings, the thickness of layers, films and regions are exaggerated for clarity. Like numerals refer to like elements throughout. It will be understood that when an element such as a layer, film, region or substrate is referred to as being "on" another element, it can be directly on the other element or intervening elements may also be present. In contrast, when an element is referred to as being "directly on" another element, there are no intervening elements present.

Now, LCDs according to embodiments of this invention will be described in detail with reference to the accompanying drawings.

FIG. 1 is an equivalent circuit diagram of a pixel of an LCD according to an embodiment of the present invention.

Referring to FIG. 1, an LCD according to an embodiment includes a plurality of display signal lines G_i , D_j and 131 and a plurality of pixels connected thereto and arranged substantially in a matrix.

The display signal lines G_i and D_j include a plurality of gate lines G_i transmitting gate signals (called scanning signals) and a plurality of data lines D_j transmitting data signals. The gate lines G_i extend substantially in a row direction and are substantially parallel to each other, and the data lines D_j extend substantially in a column direction and are substantially parallel to each other.

The display signal lines **131** further includes a plurality of storage electrode lines **131** located between the gate lines G_i and between the pixels and supplied with a common voltage V_{com} .

Each pixel P_{ij} ($i=1, 2, \dots, n$ and $j=1, 2, \dots, m$) includes a pair of subpixels P_{ij}^1 and P_{ij}^2 , and each subpixel P_{ij}^1 or P_{ij}^2 includes a switching element Q1 or Q2 connected to a pair of one of the gate lines G_i and one of the data lines D_j , and an LC capacitor C_{LC1} or C_{LC2} and a storage capacitor C_{ST1} or C_{ST2} that are connected to the switching element Q1 or Q2.

Two adjacent pixels in the column direction are capacitively coupled by a coupling capacitor C_{pp} . For example, an upper subpixel P_{ij}^1 of a pixel P_{ij} is capacitively coupled with a lower subpixel P_{ij}^2 of an upper pixel $P_{i-1,j}$, and a lower subpixel P_{ij}^2 of a pixel P_{ij} is capacitively coupled with an upper subpixel $P_{i+1,j}^1$ of a lower pixel $P_{i+1,j}$.

The switching element Q1 or Q2 has three terminals: a control terminal connected to one of the gate lines G_1 - G_n ; an input terminal connected to one of the data lines D_0 - D_m ; and an output terminal connected to the LC capacitor C_{LC1} or C_{LC2} , the storage capacitor C_{ST1} or C_{ST2} , and the coupling capacitor C_{pp} .

The LC capacitor C_{LC1} or C_{LC2} is connected between the switching element Q1 or Q2 and a common voltage V_{com} . The storage capacitor C_{ST1} or C_{ST2} is connected between the switching element Q1 or Q2 and the storage electrode line **131**.

Now, an LC panel assembly for an LCD according to an embodiment of the present invention is described in detail with reference to FIGS. 2 to 3C.

FIG. 2 is a layout view of an LC panel assembly according to an embodiment of the present invention, FIG. 3A is a sectional view of the LC panel assembly shown in FIG. 2 taken along the line IIIB-IIIB', and FIG. 3B is a sectional view of a TFT array panel shown in FIG. 3A, which is a portion of the LC panel assembly shown in FIG. 3A except for a color filter array panel and polarization films. FIG. 3C is a sectional view of a TFT array panel shown in FIG. 2 taken along the line IIIC-IIIC'.

Referring to FIG. 3A, an LC panel assembly according to this embodiment includes a TFT array panel **100**, a color filter array panel **200** facing the TFT array panel **100**, and an LC layer **3** interposed therebetween.

Referring to FIGS. 2 to 3C, the TFT array panel **100** includes a plurality of gate lines **121** and a plurality of storage electrode lines **131** formed on an insulating substrate **110** preferably made of transparent glass. Each gate line **121** extends substantially in a row direction and includes a plurality of gate electrodes **124**. The storage electrode lines **131** extend substantially in the row direction and are partially curved.

A gate insulating layer **140** is formed on the gate lines **121** and the storage electrode lines **131**, and a plurality of semiconductor islands **154** is formed on the gate insulating layer **140** opposite the gate electrodes **124**. Each semiconductor island **154** is preferably made of amorphous silicon ("a-Si") and forms a channel of a TFT. A plurality of ohmic contacts **163**, **165a** and **165b** preferably made of a-Si heavily doped with N type impurity such as phosphorous (P) are formed on the semiconductor islands **154**.

A plurality of data lines **171**, a plurality of pairs of drain electrodes **175a** and **175b**, and a plurality of coupling electrodes **177** are formed on the ohmic contacts **163**, **165a** and **165b** and the gate insulating layer **140**.

Each data line **171** extends substantially in a column direction and includes a plurality of source electrodes **173**,

and each source electrode **173** is located opposite a pair of drain electrodes **175a** and **175b** separated therefrom with respect to the gate electrode **124**.

Each pair of drain electrodes **175a** and **175b** extends in opposite directions with respect to the gate line **124**.

Each coupling electrode **177** extends in the column direction across the storage electrode line **131**.

The portions of the semiconductor islands **154** located between the source electrode **173** and the drain electrodes **175a** and **175b** are exposed, and the ohmic contacts **163**, **165a** and **165b** are disposed only between the semiconductor islands **154** and the data lines **171** and the drain electrodes **175a** and **175b**.

A passivation layer **180** is formed on the data lines **171**, the drain electrodes **175a** and **175b**, and the coupling electrodes **177**. The passivation layer **180** has a plurality of contact holes **185a** and **185b** exposing end portions of the drain electrodes **175a** and **175b** and a plurality of contact holes **187** exposing end portions of the coupling electrodes **177**. The passivation layer **180** further has a plurality of contact holes **182** exposing end portions **179** of the data lines **171**, and the passivation layer **180** and the gate insulating layer **140** have a plurality of contact holes **181** exposing end portions **129** of the gate lines **121**.

A plurality of pairs of pixel electrodes **190a** and **190b** and a plurality of contact assistants **81** and **92** are formed on the passivation layer **180**. The pixel electrodes **190a** and **190b** and the contact assistants **81** and **92** are preferably made of a transparent conductive material such as indium-tin-oxide (ITO) and indium-zinc-oxide (IZO) or a reflective material.

Each pair of pixel electrodes **190a** and **190b** includes a lower pixel electrode **190a** and an upper pixel electrode **190b** connected to the drain electrodes **175a** and **175b** through the contact holes **185a** and **185b**, respectively. The upper electrode **190b** is connected to the coupling electrode **177** through the contact hole **187** and the lower electrode **190a** overlaps the coupling electrode **177** such that the lower pixel electrode **190a** of an upper pixel and the upper pixel electrode **190b** of a lower pixel are capacitively coupled. In addition, the lower pixel electrode **190a** of an upper pixel and the upper pixel electrode **190b** of a lower pixel are located opposite across the storage electrodes line **131** and overlap the storage electrode line **131** to form a plurality of storage capacitors. The edges of the pixel electrodes **190a** and **190b** opposite across the storage electrode line **131** are curved to form V shapes, and the V-shaped edge of the pixel electrode **190a** is convex, while that of the pixel electrode **190b** is concave.

Each lower pixel electrode **190a** has upper, lower and central linear cutouts **91-93**. The central cutout **93** is located at the middle portion in the column direction and enters into the pixel electrode **190a** from the left to the right, thereby partitioning the pixel electrode **190a** into upper and lower partitions. The upper and the lower cutouts **91** and **92** obliquely extend in the upper and the lower partitions, respectively, and are located symmetrically with respect to the central cutout **93**.

The contact assistants **81** and **82** are connected to the exposed end portions **129** and **179** of the gate lines **121** and the data lines **171** through the contact holes **181** and **182**, respectively, and provided for protecting the exposed end portions **129** and **179** but is optional.

An alignment layer **11** is coated on the entire surface of the TFT array panel **100** except for the contact assistants **81** and **82**.

One gate electrode **124**, one source electrode **173**, and a pair of drain electrodes **175a** and **175b** along with one

semiconductor island **154** form a pair of TFTs respectively connected to the pixel electrodes **190a** and **190b**.

Referring to FIGS. **2** and **3B**, the color filter array panel **200** includes a black matrix **220** formed on an insulating substrate **210** preferably made of transparent glass. The black matrix **220** defines a plurality of windows where a plurality of red, green and blue color filters **230** are formed. An overcoat is formed on the color filters and a common electrode **270** is formed thereon. The common electrode **270** is preferably made of a transparent conductive material such as ITO and IZO, and has a plurality of sets of four linear cutouts **271-274**. Three **271-273** of the cutouts **271-274** overlap the lower pixel electrode **190a** to partition the pixel electrode **190a** along with the cutouts **91-93** into a plurality of subareas. The cutout **274** having a V shape overlap the upper electrode **190b** to bisect the upper pixel electrode **190b** into two subareas. An alignment layer **21** is coated on the entire surface of the color filter array panel **200**.

Each subarea defined by the cutouts **91-93** and **271-273** has substantially a shape of a tetragon having two major edges making an angle of about 45 degrees with the gate lines **121** and the data lines **171**. The subareas defined by edges of the upper pixel electrode **190b** and the cutout **274** have V shapes, which are combinations of two tetragons.

A pair of polarizers **12** and **22** are attached to outer surfaces of the panels **100** and **200**, respectively. The polarization, axes of the polarizers **12** and **22** are crossed and substantially parallel to the gate lines **121** or the data lines **171**.

The molecules of the LC layer **3** are aligned such that their major axes are substantially perpendicular to the surfaces of the panels **100** and **200** in absence of electric field.

Referring back to FIG. **1**, the difference between the data voltage and the common voltage Vcom applied to a pixel is expressed as a charged voltage of the LC capacitor C_{LC1} or C_{LC2} , i.e., a pixel voltage. The LC molecules have orientations depending on the magnitude of the pixel voltage and the orientations determine the polarization of light passing through the LC capacitor C_{LC1} or C_{LC2} . The polarizers **11** and **21** convert the light polarization into the light transmittance.

In the meantime, it is assumed that the difference between a data voltage for a pixel Pup and the common voltage Vcom is d_{up} , and pixel voltages charged in LC capacitors C_{LC1} and C_{LC2} of the upper and the lower subpixels P_{up}^1 and P_{up}^2 of the pixel Pup are $V(P_{up}^1)$ and $V(P_{up}^2)$, respectively. In addition, let us assume that the lower subpixel P_{up}^2 of the pixel Pup and the upper subpixel P_{down}^1 of the pixel Pdown are coupled with a coupling capacitor Cpp, and the difference between the data voltage for the pixel Pdown and the common voltage Vcom is d_{down} . Furthermore, after the pixel Pup is supplied with the data voltage, the pixel Pdown is supplied with the data voltage. Then, the following relations are satisfied:

$$V(P_{up}^1) = d_{up}; \text{ and} \quad (1)$$

$$V(P_{up}^2) = d_{up} + \frac{Cpp}{C_{LC2} + C_{ST2} + Cpp} \cdot (d_{down} - d'_{down}). \quad (2)$$

In Equations 1 and 2, C_{LC2} and C_{ST2} are the capacitances of the LC capacitor and the storage capacitor of the lower subpixel P_{up}^2 , Cpp is the capacitance of the coupling capacitor, and d'_{down} is the difference between the data voltage applied to subpixel P_{down}^1 in a previous frame and the

common voltage Vcom. For descriptive convenience, the wire resistance and the signal delay of the data lines D_j are ignored.

In Equation 2, if d_{down} and d'_{down} have opposite polarity since d_{up} and d_{down} have the same polarity, the pixel Pdown displays the same gray as the pixel Pup, and the displayed images are still images, $d_{up} = d_{down} = -d_{down}$ and thus Equation 2 becomes:

$$V(P_{up}^2) = \quad (3)$$

$$d_{up} + \frac{2d_{up} Cpp}{C_{LC2} + C_{ST2} + Cpp} = \frac{C_{LC2} + C_{ST2} + 3Cpp}{C_{LC2} + C_{ST2} + Cpp} d_{up} = T_1 d_{up},$$

$$\text{where } T_1 = \frac{C_{LC2} + C_{ST2} + Cpp}{C_{LC2} + C_{ST2} + Cpp} > 1.$$

On the contrary, if d_{up} and d_{down} have opposite polarities, the pixel Pdown displays the same gray as the pixel Pup, and the displayed images are still images, Equation 2 becomes:

$$V(P_{up}^2) = \quad (4)$$

$$d_{up} - \frac{2d_{up} Cpp}{C_{LC2} + C_{ST2} + Cpp} = \frac{C_{LC2} + C_{ST2} - Cpp}{C_{LC2} + C_{ST2} + Cpp} d_{up} = T_2 d_{up},$$

$$\text{where } T_2 = \frac{C_{LC2} + C_{ST2} - Cpp}{C_{LC2} + C_{ST2} + Cpp} < 1.$$

According to Equations 3 and 4, if a lower subpixel P_{up}^2 of a pixel Pup is capacitively coupled with an upper subpixel P_{down}^1 of a pixel Pdown, the lower subpixel P_{up}^2 of the pixel Pup is charged with a voltage higher than that charged in the upper subpixel P_{up}^1 of the pixel Pup when the polarity of the data voltages applied to the two subpixels P_{up}^2 and P_{down}^1 is the same, and vice versa when the polarity is opposite.

This pixel structure that a pixel includes two switching elements and two LC capacitors and adjacent pixels are capacitively coupled by a coupling capacitor prevents gray inversion at a bottom view and improves visibility at all directions.

FIG. **4** is a graph illustrating the distortion in the visibility as function of the voltage shift and the areal ratio of the pixel electrodes.

The vertical axis shown in FIG. **4** indicates the value of quantifying the distortion in the visibility, and the horizontal axis indicates the areal ratio between lower and upper pixel electrodes **190a** and **190b** for the voltage shifts 0, 0.4V and 0.6V.

The visibility distortion in a range of 0.1-0.2 means that the visibility is exceptionally excellent, which is equal to the level of the cathode ray tube (CRT), and the visibility distortion in a range of 0.2-0.25 means that the visibility is very excellent. The visibility distortion in a range of 0.25-0.3 means that the visibility is excellent, and the visibility distortion in a range of 0.3-0.35 means that the visibility is good. However, the visibility distortion less than about 0.35 means that the visibility is bad, which results in the poor display quality.

It is known from FIG. **4** that an excellent visibility is obtained when the areal ratio of the lower pixel electrode to the upper pixel electrode is in a range of 50:50-80:20, and when the voltage shift is in a range of 0.4-1.0V close to a threshold voltage Vth. That is, the lower pixel electrode is preferably designed to be larger than the upper pixel electrode. However, when the lower pixel electrode is equal to

or larger than 80%, various problems such as a flicker phenomenon may be made due to the kick-back voltage or other factors. Furthermore, when the threshold voltage V_{th} of the lower pixel electrode is lower than the threshold voltage V_{th} of the upper pixel electrode by 0.4-1.0V, the visibility is improved. The voltage difference between the lower and the upper pixel electrodes for the higher grays may be greater.

Then, the reason why the visibility is improved with the LCD according to the present invention will be now described with reference to FIGS. 5 and 6.

FIG. 5 is a graph illustrating gamma curves C1 and C2 respectively for a front view and a lateral view of a conventional patterned-vertically-aligned (PVA) LCD, and FIG. 6 is a graph illustrating gamma curves C3 and C4 respectively for a front view and a lateral view of an LCD according to an embodiment of the present invention.

As shown in FIG. 5, the lateral gamma curve C2 of a conventional PVA LCD having one pixel electrode for a pixel is largely deformed upward compared with the front gamma curve C1.

However, according to an embodiment of the present invention, when the data voltage is established such that the pixel voltage applied to the lower subpixel is lower than the usual data voltage, the voltage of the lower subpixel may be kept to be lower than a threshold voltage V_{th} for some lower grays. Accordingly, the lower subpixel is kept to be in a black state, while the upper subpixel exhibits a transmitting state as indicated by reference character A in FIG. 6. However, since the area of the upper pixel electrode is small, the total luminance is small than that of a conventional LCD. For the gray equal to or larger than a predetermined value (indicated by reference character B), the voltage of the lower subpixel exceeds the threshold voltage V_{th} , and hence, the lower subpixel also contributes to the total luminance. Therefore, the increase of the luminance depending on the gray increase is enlarged. Accordingly, as shown in FIG. 6, the distortion in the gamma curve becomes decreased.

FIG. 7 illustrates measured gamma curves of a conventional PVA mode LCD, and FIG. 8 illustrates measured gamma curves of an LCD according to an embodiment of the present invention.

Comparing the gamma curves illustrated in FIGS. 7 and 8, it can be known that the gamma curve distortion for all directions of the LCD according to the embodiment of the present invention be smaller than that of the conventional LCD for all directions.

As described above, two pixel electrodes and two TFTs are assigned to one pixel, and the two pixel electrodes of adjacent two pixels are capacitively coupled, thereby improving the visibility in all directions. Furthermore, as the domain partitioning is made such that the average director of the liquid crystal molecules is angled with respect to the gate line or the data line by 45° , polarizers having polarizing axes parallel to the gate line or the data line can be used. Consequently, the production cost for the polarizing plate can be reduced.

Although preferred embodiments of the present invention have been described in detail hereinabove, it should be clearly understood that many variations and/or modifications of the basic inventive concepts herein taught which may appear to those skilled in the present art will still fall

within the spirit and scope of the present invention, as defined in the appended claims.

What is claimed:

1. A liquid crystal display, comprising:

- a first substrate;
 - a storage electrode line disposed on the first substrate and supplied with a common voltage;
 - a pixel electrode comprising a first subpixel electrode and a second subpixel electrode, the first and the second subpixel electrodes being located at a same layer;
 - a first polarizer having a first polarizing axis;
 - a second substrate facing the first substrate;
 - a common electrode on the second substrate;
 - a second polarizer having a second polarizing axis crossing the first polarizing axis;
 - a liquid crystal layer interposed between the first substrate and the second substrate; and
 - a capacitor electrode overlapping the second subpixel electrode and disposed between the second subpixel electrode and the storage electrode line,
- wherein the liquid crystal layer is divided into a plurality of domains when an electric field is applied to the liquid crystal layer,
- wherein an initial charged voltage of the second subpixel electrode is shifted in response to a voltage of the capacitor electrode changing.

2. The liquid crystal display of claim 1, wherein the liquid crystal layer comprises liquid crystal molecules having negative dielectric anisotropy.

3. The liquid crystal display of claim 1, wherein a difference between a charged voltage of the first subpixel electrode and a charged voltage of the second subpixel electrode is within a range of about 0.4 volts and about 1.0 volts.

4. The liquid crystal display of claim 1, further comprising:

- first signal lines disposed on the first substrate;
- a first thin film transistor electrically connected to one of the first signal lines and the first subpixel electrode, respectively; and
- a second thin film transistor electrically connected to the one of the first signal lines and the second subpixel electrode, respectively.

5. The liquid crystal display of claim 4, wherein the storage electrode line is disposed between two adjacent first signal lines, and overlaps the first subpixel electrode or the second subpixel electrode.

6. The liquid crystal display of claim 1, wherein the domains of the liquid crystal layer are defined by a domain partitioning member formed on at least one of the first substrate and the second substrate.

7. The liquid crystal display of claim 1, wherein the liquid crystal layer is divided into at least four domains.

8. The liquid crystal display of claim 1, wherein an area of the first subpixel electrode is different from an area of the second subpixel electrode.

9. The liquid crystal display of claim 1, wherein a larger area of the first subpixel electrode and the second subpixel electrode is less than 4 times of a smaller area of the first subpixel electrode and the second subpixel electrode.

* * * * *

专利名称(译)	液晶显示器及其薄膜晶体管阵列面板		
公开(公告)号	US9477121	公开(公告)日	2016-10-25
申请号	US14/197781	申请日	2014-03-05
[标]申请(专利权)人(译)	三星显示有限公司		
申请(专利权)人(译)	三星DISPLAY CO. , LTD.		
当前申请(专利权)人(译)	三星DISPLAY CO. , LTD.		
[标]发明人	SONG JANG KUN		
发明人	SONG, JANG-KUN		
IPC分类号	G02F1/13 G02F1/1337 G02F1/1343 G02F1/1362 G02F1/1368 G02F1/1333		
CPC分类号	G02F1/13439 G02F1/13624 G02F1/133707 G02F1/136213 G02F2001/134318 G02F1/133345 G02F1/133514 G02F1/133528 G02F1/134309 G02F1/136286 G02F1/1368 G02F2001/133531 G02F2001/134345 G02F2201/121 G02F2201/123		
优先权	1020020036979 2002-06-28 KR		
其他公开文献	US20140184993A1		
外部链接	Espacenet USPTO		

摘要(译)

提供一种液晶显示器 (LCD)，包括：第一和第二栅极线，与栅极线交叉的数据线，位于第一和第二栅极线与数据线之间的交叉点附近的第一至第四漏极电极，以及耦合电极。还提供分别连接到第一至第四漏电极的第一至第四像素电极，并且第一像素电极连接至耦合电极，而第四像素电极与耦合电极重叠。LCD还包括与像素电极相对的公共电极，插入在像素电极和公共电极之间的液晶层，以及形成在像素电极和公共电极中的至少一个上的畴分隔构件。畴的两个长边相对于第一和第二栅极线或数据线成角度大致为45°。

