



US 20140176465A1

(19) **United States**(12) **Patent Application Publication**
MA et al.(10) **Pub. No.: US 2014/0176465 A1**(43) **Pub. Date: Jun. 26, 2014**(54) **TN LIQUID CRYSTAL DISPLAY DEVICE AND
TOUCH CONTROL METHOD THEREOF**(52) **U.S. CL.**CPC *G02F 1/13338* (2013.01); *G06F 3/041*
(2013.01)(71) Applicant: **Shanghai Tianma Micro-Electronics
Co., Ltd.**, Shanghai (CN)USPC **345/173**; 349/12(72) Inventors: **Jun MA**, Shanghai (CN); **Lijun Zhao**,
Shanghai (CN)

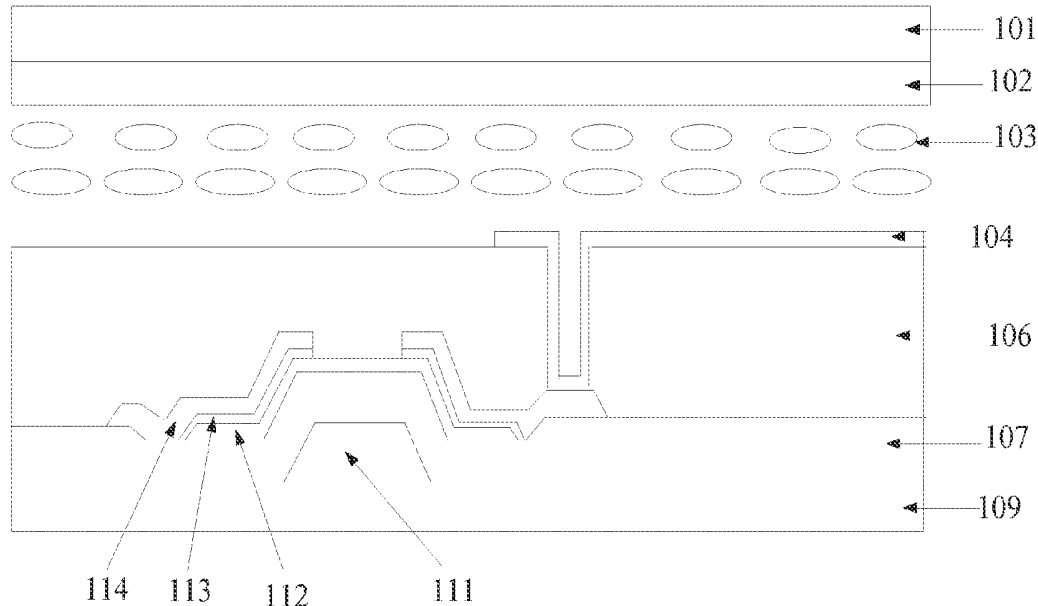
(57)

ABSTRACT(73) Assignee: **Shanghai Tianma Micro-Electronics
Co., Ltd.**, Shanghai (CN)(21) Appl. No.: **14/085,766**(22) Filed: **Nov. 20, 2013**(30) **Foreign Application Priority Data**

Dec. 24, 2012 (CN) 201210567635.0

Publication Classification(51) **Int. Cl.***G02F 1/1333* (2006.01)*G06F 3/041* (2006.01)

A twisted nematic liquid crystal display device integrated with a touch control function is disclosed. The device includes an array substrate, a color film substrate disposed opposite the array substrate, and a liquid crystal layer disposed between the array substrate and the color film substrate. The device also includes a common electrode layer disposed on a surface of the color film substrate facing the liquid crystal layer. The common electrode layer includes a plurality of sensing electrodes, a plurality of driving electrodes, and a plurality of dummy electrodes located between the sensing electrodes and the driving electrodes. In addition, the sensing electrodes, the driving electrodes, and the dummy electrodes are insulated from one another.



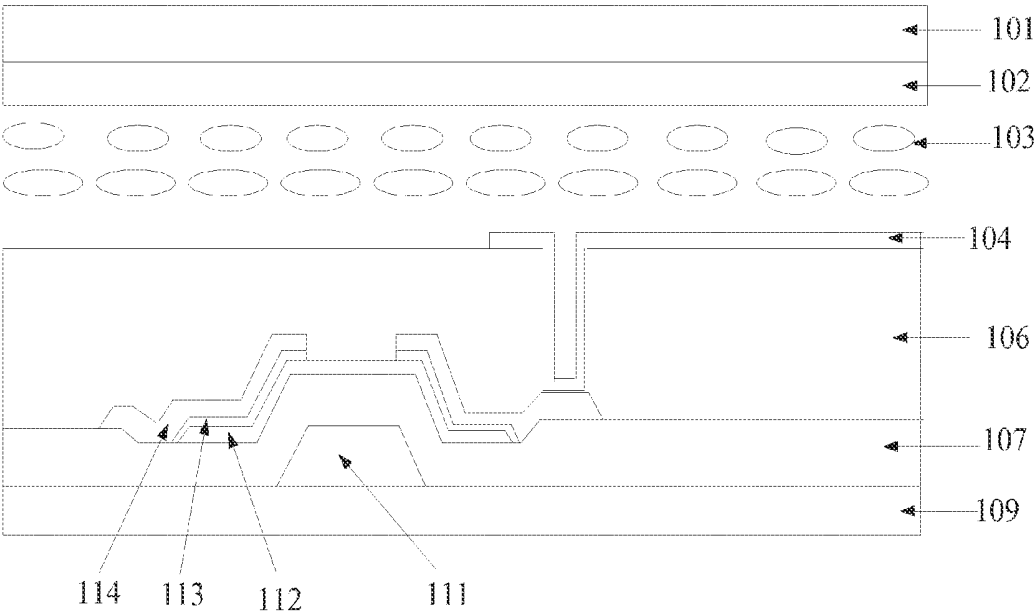


FIG. 1

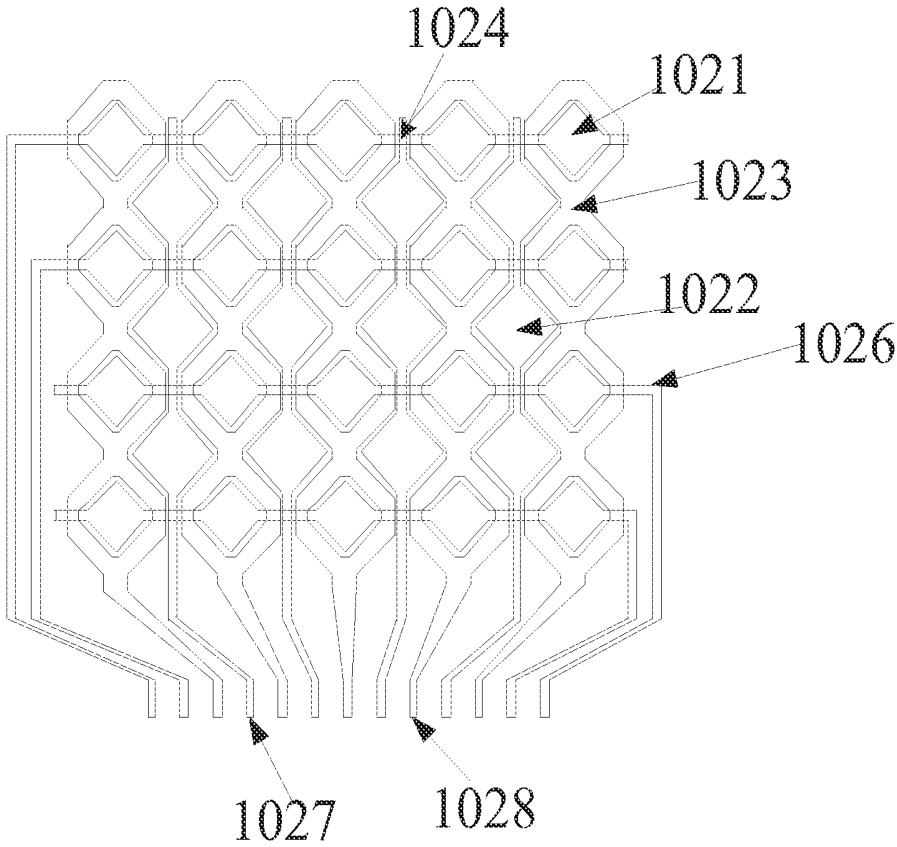


FIG. 2

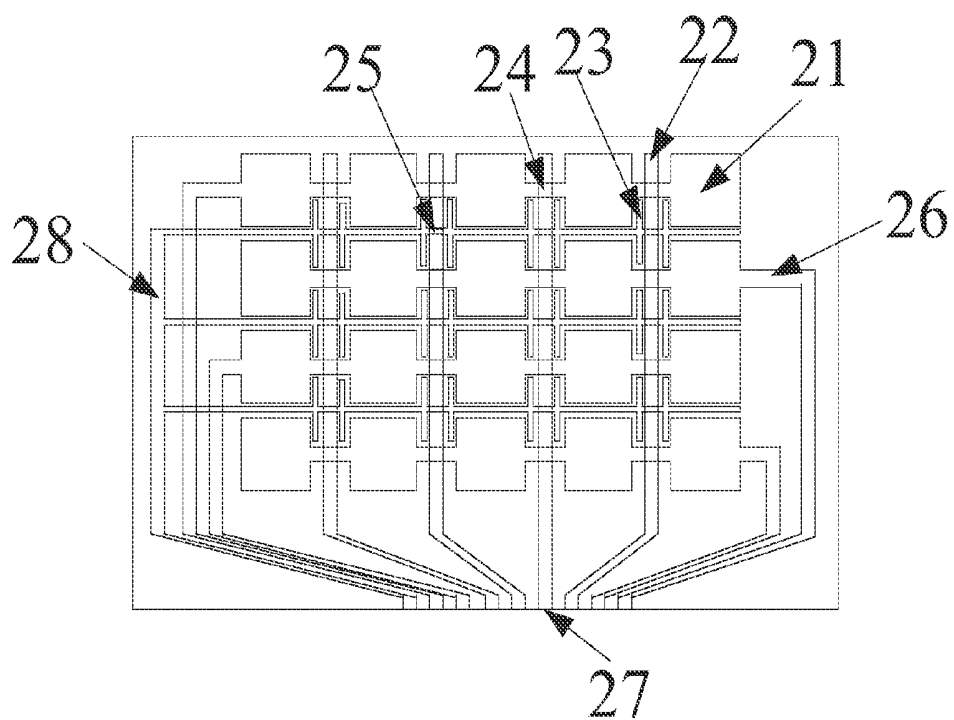


FIG. 3

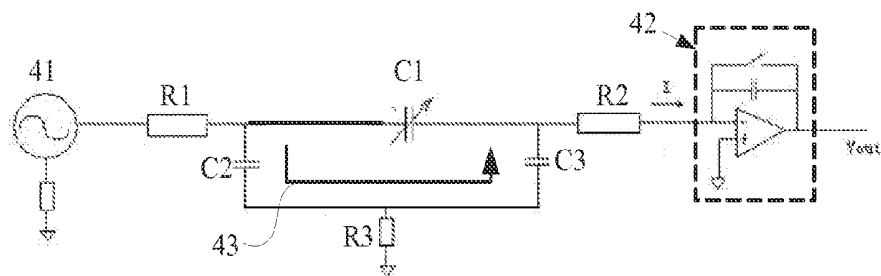


FIG. 4

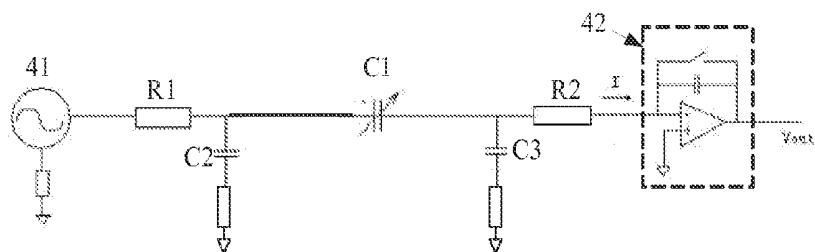


FIG. 5

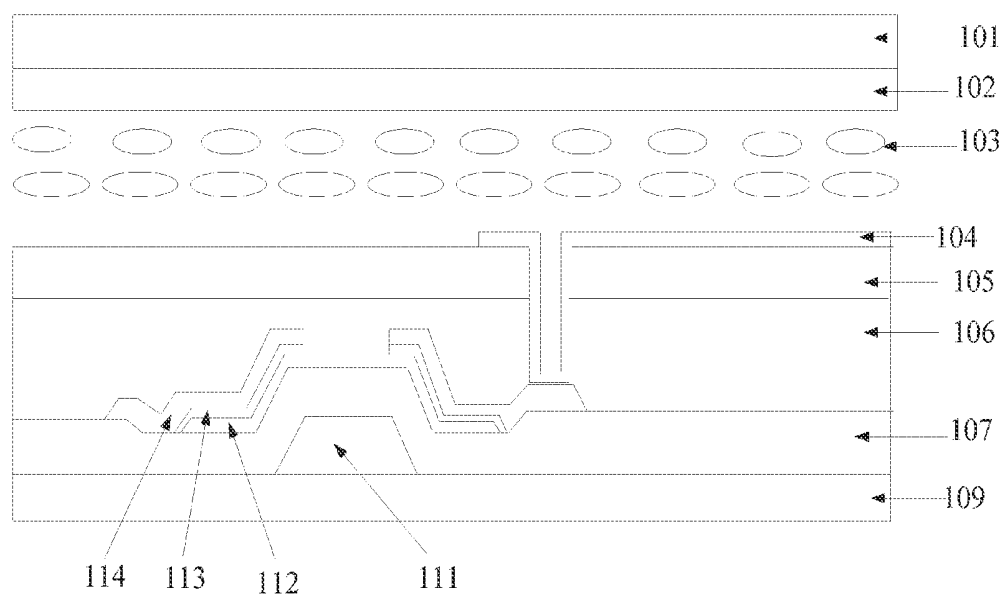


FIG. 6

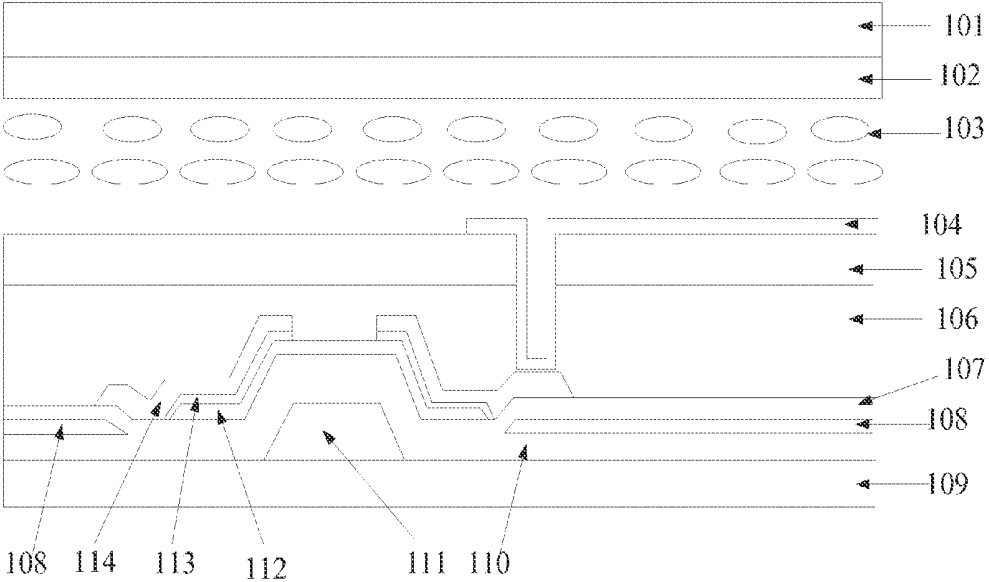


FIG. 7

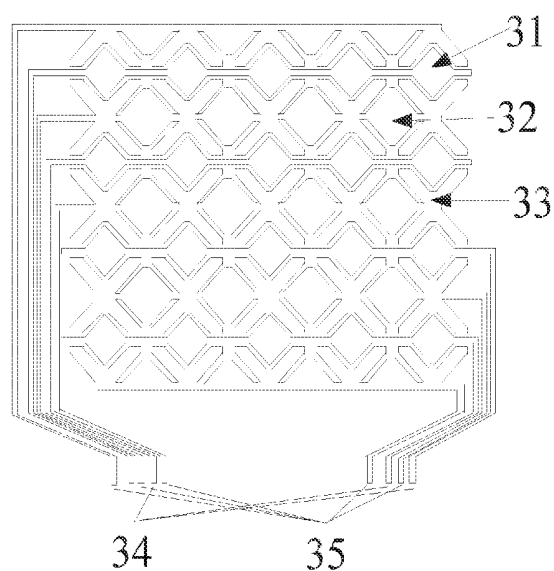


FIG. 8

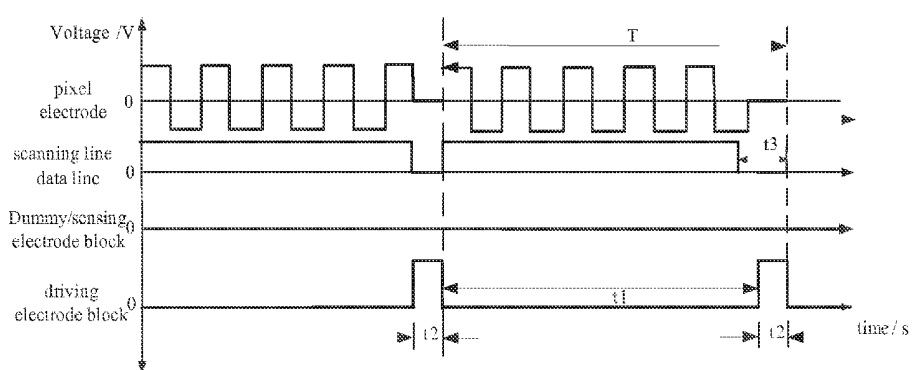
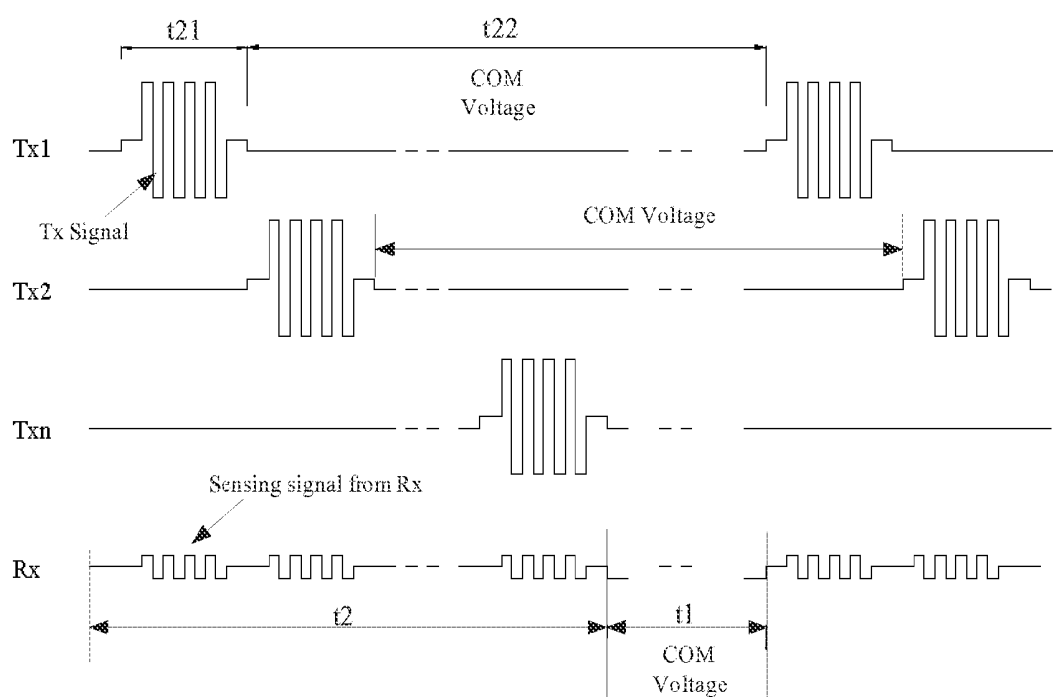


FIG. 9

**FIG. 10**

color film substrate 101
black matrix layer 120
common electrode layer 102

FIG. 11

liquid crystal layer 103
gate electrode layer 121
array substrate 109

FIG. 12

TN LIQUID CRYSTAL DISPLAY DEVICE AND TOUCH CONTROL METHOD THEREOF

CROSS-REFERENCES TO RELATED APPLICATIONS

[0001] This application claims the benefit of priority to Chinese Patent Application No. 201210567635.0, entitled “TN LIQUID CRYSTAL DISPLAY DEVICE AND TOUCH CONTROL METHOD THEREOF”, filed with the Chinese Patent Office on Dec. 24, 2012, the contents of which is incorporated herein by reference in its entirety.

TECHNICAL FIELD

[0002] The invention relates to liquid crystal display (LCD) technology, and in particular to a TN (twisted nematic) LCD device and a touch control method thereof.

BACKGROUND OF THE INVENTION

[0003] With the development of the liquid crystal display (LCD) technology, touch panels, as the most simple, convenient and natural way of human-machine interaction, are increasingly applied to the field of LCD. Depending on differences of the operational principle and media for transmitting information, the touch panels may be classified into four types: resistive touch panels, capacitive touch panels, infrared touch panels and surface acoustic wave touch panels. The capacitive touch panel technology is popular due to the simple process, long service life and high transmittance.

[0004] In the existing TN (twisted nematic) LCD device integrated with the touch control function, a touch panel is directly disposed on a TN LCD panel. Each of the LCD panel and the touch panel includes two substrates which are generally glass substrates. That is, the existing TN LCD device with the touch control function requires at least four glass substrates to be jointed together. In view of the requirements for thinner, more convenient display device at the right now and in the future, the TN LCD device with the touch control function mentioned above is inadequate considering its complex structure, great thickness, complex manufacturing process and high manufacturing costs, therefore, it's needful to reduce the manufacturing costs, simplify the manufacturing process and provide a lighter, thinner, more convenient display device with simple structure.

BRIEF SUMMARY OF THE INVENTION

[0005] One inventive aspect is a twisted nematic liquid crystal display device integrated with a touch control function. The device includes an array substrate, a color film substrate disposed opposite the array substrate, and a liquid crystal layer disposed between the array substrate and the color film substrate. The device also includes a common electrode layer disposed on a surface of the color film substrate facing the liquid crystal layer. The common electrode layer includes a plurality of sensing electrodes, a plurality of driving electrodes, and a plurality of dummy electrodes located between the sensing electrodes and the driving electrodes. In addition, the sensing electrodes, the driving electrodes, and the dummy electrodes are insulated from one another.

[0006] Another inventive aspect is a method of controlling a twisted nematic liquid crystal display device, for performing detection of touch signal. The method includes dividing a time-sharing period during display into a first duration and a

second duration, where during the time-sharing period, the common electrode layer is configured to detect a touch signal and to provide a common electrode signal. The second duration is shorter than a retention time of liquid crystal molecules and is longer than or equal to a scanning time for one detection of the touch signal by the common electrode layer. In addition, the retention time of liquid crystal molecules is a time period during which the liquid crystal molecules maintain a previous state when a driving voltage of the common electrode layer changes. The method also includes, during the first duration, applying a same common potential to a plurality of sensing electrodes, to a plurality of driving electrodes, and to a plurality of dummy electrodes of the common electrode layer to achieve normal display. The method also includes, during the second duration, grounding the dummy electrodes and applying a driving voltage for touch detection to the sensing electrodes and to the driving electrodes of the common electrode layer.

BRIEF DESCRIPTION OF THE DRAWINGS

[0007] FIG. 1 is a schematic sectional diagram of a TN LCD device according to a first embodiment of the present invention;

[0008] FIG. 2 is a plan view of a common electrode layer according to the first embodiment of the present invention;

[0009] FIG. 3 is a plan view of a common electrode layer according to a second embodiment of the present invention;

[0010] FIG. 4 is a schematic diagram showing a certain principle of touch detection in a capacitive touch panel;

[0011] FIG. 5 is a schematic diagram showing another principle of touch detection in a capacitive touch panel;

[0012] FIG. 6 is a schematic sectional diagram of a TN LCD device according to a third embodiment of the present invention;

[0013] FIG. 7 is a schematic sectional diagram of a TN LCD device according to a fourth embodiment of the present invention;

[0014] FIG. 8 is a schematic plan view of a first transparent electrode layer according to the fourth embodiment of the present invention;

[0015] FIG. 9 is a schematic diagram showing the control means for electrodes of a TN LCD device according to a fifth embodiment of the present invention;

[0016] FIG. 10 is a schematic diagram showing the control means for driving electrodes and sensing electrodes on a common electrode layer of a TN LCD device according to the fifth embodiment of the present invention;

[0017] FIG. 11 is a schematic sectional diagram showing a black matrix layer in the TN LCD device according to an embodiment of the present invention; and

[0018] FIG. 12 is a schematic sectional diagram showing a gate electrode layer in the TN LCD device according to an embodiment of the present invention.

DETAILED DESCRIPTION OF THE PREFERRED EMBODIMENTS

[0019] In order to make objects, technical solutions and advantages of embodiments of the present invention to be clearer, in the following the technical solutions according to the embodiments of the present invention will be clearly and fully described in conjunction with the drawings. Apparently, the embodiments to be described are only some of the embodiments of the present invention but not all the embodi-

ments of the present invention. Any other embodiments obtained by the skilled in the art based on the embodiments of the present invention without inventive works fall within the protective scope of the present invention.

[0020] As described in the background of the present invention, the existing TN LCD device integrated with a touch control function requires at least four glass substrates, causing a greater thickness and a higher manufacturing cost of the TN LCD device.

[0021] In view of this, a TN LCD device is provided according to an embodiment of the present invention. The TN LCD device includes: an array substrate, a color film substrate disposed opposite to the array substrate, and a liquid crystal layer disposed between the array substrate and the color film substrate; a common electrode layer disposed on a surface of the color film substrate facing the liquid crystal layer, wherein the common electrode layer includes a plurality of sensing electrodes, a plurality of driving electrodes and a plurality of dummy electrodes located between the sensing electrodes and the driving electrodes, and the sensing electrodes, the driving electrodes and the dummy electrodes are insulated from each other.

[0022] In this embodiment, since the common electrode layer comprises a plurality of sensing electrodes, a plurality of driving electrodes and a plurality of dummy electrodes, the common electrode layer can perform functions of touch control. Therefore, a touch panel is saved, which allows the TN LCD device integrated with the touch control function to be lighter and thinner.

[0023] A control method of the TN LCD device for performing detection of touch signal during normal display, includes: dividing a time-sharing period during normal display into a first duration and a second duration. The time-sharing period refers to a period in which the common electrode layer performs detection of touch signal and provides common electrode signal. The second duration is shorter than the retention time of liquid crystal molecules and longer than or equal to the scanning time for one detection of touch signal performed by the common electrode layer. The retention time of liquid crystal molecules refers to the time duration in which the liquid crystal molecules maintain the previous state when a driving voltage of the common electrode layer changes. During the first duration, the sensing electrodes, driving electrodes and dummy electrodes of the common electrode layer are applied a same common potential to achieve normal display. During the second duration, a driving voltage of touch detecting is applied to the sensing electrodes and the driving electrodes of the common electrode layer and the dummy electrodes are grounded for the detection of touch signal.

[0024] According to the method, a common voltage and a driving voltage of touch detecting are sequentially applied to corresponding electrodes in the common electrode layer to achieve normal display and touch detection. Furthermore, it is guaranteed that the duration for the touch driving process is shorter than the retention time of liquid crystal molecules and longer than or equal to the scanning time for one detection of touch signal performed by the common electrode layer, so the normal display is maintained during the touch detection, namely, the touch detection is achieved during normal display.

[0025] The core ideas of the present invention are described above. In the following, the technical solutions according to embodiments of the present invention will be clearly, fully described in conjunction with the drawings. Apparently, the

described embodiments are only some of but not all the embodiments of the present invention. Any other embodiments obtained by the skilled in the art based on the embodiments of the present invention without an inventive work may fall within the protective scope of the present invention.

First Embodiment

[0026] A TN (twisted nematic) LCD device is disclosed according to the first embodiment of the present invention. As shown in the sectional view in FIG. 1, the LCD device includes:

[0027] an array substrate **109**, a color film substrate **101** disposed opposite to the array substrate **109**, and a liquid crystal layer **103** disposed between the array substrate **109** and the color film substrate **101**; wherein the array substrate and the color film substrate are generally glass substrates;

[0028] a gate electrode layer **121** disposed on a surface of the array substrate **109** facing the liquid crystal layer **103**, where the gate electrode layer **121** includes gate electrodes **111** and scanning lines (not shown), the scanning lines and the gate electrodes **111** are formed on a same conductive layer and electrically connected to each other, the scanning line is used to switch on/off of a thin film transistor (TFT), and the gate electrode layer **121** may be made of a metal or a transparent conductive material such as indium tin oxide;

[0029] a first insulating layer **107** disposed on the gate electrode layer **121**, wherein the first insulating layer **107** is made of at least one of silicon nitride, silicon oxide and silicon oxynitride, and preferably is made of silicon nitride in this embodiment;

[0030] a silicon island disposed on the first insulating layer **107**, wherein the silicon island includes an amorphous silicon layer **112** and a heavily doped amorphous silicon layer **113** both are located above the first insulating layer **107**, and preferably the heavily doped amorphous silicon layer **113** is a N-type heavily doped amorphous silicon layer;

[0031] a source/drain electrode layer **114** disposed on the silicon island, wherein the source/drain electrode layer **114** includes source electrodes, drain electrodes and data lines, and the gate electrode within the gate electrode layer **121**, the first insulating layer, the silicon island, the source electrode and the drain electrode form a TFT structure collectively;

[0032] a second insulating layer **106** disposed on the source/drain electrode layer **114** for isolating the source/drain electrode layer **114** from a pixel electrode layer;

[0033] the pixel electrode layer **104** disposed on the second insulating layer **106**, wherein the pixel electrode layer **104** is a transparent conductive layer, which is made of indium tin oxide (ITO), indium zinc oxide (IZO) or the combination of ITO and IZO; the source electrode of the TFT is connected to the data line and the drain electrode of the TFT is connected to the pixel electrode to control the display of the pixel electrode; and

[0034] a common electrode layer **102** disposed on a surface of the color film substrate **101** facing the liquid crystal layer, wherein the common electrode layer **102** includes a plurality of sensing electrodes, a plurality of driving electrodes and a plurality of dummy electrodes located between the sensing electrodes and the driving electrodes, the sensing electrodes, the driving electrodes and the dummy electrodes are insulated from each other.

[0035] According to this embodiment, the common electrode layer **102** may be preferably a transparent conductive layer, and be made of ITO, IZO or the combination of ITO and IZO.

[0036] The plan view of the common electrode layer **102** according to this embodiment is shown in FIG. 2. The driving electrodes **1021** and the sensing electrodes **1022** are rhombic electrodes arranged in an array. A dummy electrode **1023** is disposed between a driving electrode **1021** and a sensing electrode **1022** which are adjacent to each other. The dummy electrode **1023** is a hollowed-out rhombic electrode having a hollowed-out part in which a driving electrode **1021** or a sensing electrode **1022** is disposed. Specifically, taking the first right column in FIG. 2 as an example, driving electrodes **1021** are disposed in the hollowed-out parts of the dummy electrodes **1023**; and taking the second right column in FIG. 2 as an example, sensing electrode **1022** are disposed in the hollowed-out parts of the dummy electrodes **1023**.

[0037] The driving electrode **1021**, the sensing electrode **1022** and the dummy electrode **1023** are isolated and insulated from each other by gaps between any two of them. In this embodiment, the gaps are preferably overlapped with a black matrix layer **120** (as shown in FIG. 11) on the color film substrate in order to further improve the aperture ratio of the LCD device. That is, the black matrix layer **120**, located between the color film substrate and the common electrode layer, may cover the gaps.

[0038] According to the embodiment, a plurality of driving electrodes **1021** in a same row are connected to one another through a first wiring to form a driving line **1026**, and a plurality of sensing electrodes **1022** in a same column are connected to one another through a second wiring to form a sensing line **1027**. Since the first wiring is inevitably intersected with the second wiring, one of the first wiring and the second wiring must connect to the corresponding electrodes in a form of a conductive bridging in order to guarantee that the first wiring and the second wiring are insulated from each other.

[0039] Specifically, the plurality of driving electrodes **1021** are connected in such a way that the common electrode layer **102** and the first wirings for electrically connecting the driving electrodes to one another are on a same conductive layer, and meanwhile the plurality of sensing electrodes **1022** are connected in such a way that the second wirings for electrically connecting the sensing electrodes **1022** are conductive bridgings **1024** which are on a different conductive layer from the common electrode layer **102**. Alternatively, the plurality of sensing electrodes **1022** are connected in such a way that the common electrode layer **102** and the second wirings for electrically connecting the sensing electrodes **1022** to one another are on a same conductive layer, and meanwhile the plurality of driving electrodes **1021** are connected in such a way that the first wirings for electrically connecting the driving electrodes **1021** are conductive bridgings **1024** which are on a different conductive layer from the common electrode layer.

[0040] To facilitate the applying of a same potential to all the electrodes of the common electrode layer simultaneously for implementing normal display, in the embodiment, all the dummy electrodes **1023** are electrically connected to one another. For the connection of a column of dummy electrodes perpendicular to the driving line **1026**, the dummy electrodes at the intersection with the driving line **1026** need to be electrically connected to the conductive bridging which is on

a different conductive layer from the common electrode layer **102**. For the connection of a row of dummy electrodes perpendicular to the sensing line **1027**, the dummy electrodes at the intersection with the sensing line **1027** need to be electrically connected to the conductive bridging which is on a different conductive layer from the common electrode layer **102**.

[0041] In other words, the dummy electrodes in a same row or a same column are electrically connected to one another via a third wiring to form a dummy electrode line **1028**, and the third wiring is a conductive bridging on a different conductive layer from the common electrode layer **102**. Thereafter, all the dummy electrode lines **1028** are applied a same potential or all the dummy electrode lines **1028** are extended through a same electrode lead, so that all the dummy electrodes **1023** are electrically connected together.

[0042] It is to be understood by those skilled in the art that the arrangement of the driving electrodes and the sensing electrodes may be interchangeable. In the embodiment, explanation is made by taking the case that the driving lines are arranged in the horizontal direction and the sensing lines are arranged in the vertical direction as an example. In other embodiments, the driving lines may be arranged in the vertical direction and the sensing lines may be arranged in the horizontal direction. That is, driving electrodes **1021** in a same column are connected to one another through the first wiring to form a driving line and sensing electrodes **1022** in a same row are connected to one another through the second wiring to form a sensing line.

Second Embodiment

[0043] Different from the structure of the common electrode layer of the TN LCD device disclosed in the above embodiment, the plan view of the common electrode layer **102** of the TN LCD device according to the second embodiment of the present invention is shown in FIG. 3. A plurality of driving electrodes **21** are square electrodes arranged in an array, and strip-shaped sensing electrodes **22** are disposed between every two adjacent columns of driving electrodes. A dummy electrode **23** is disposed between a driving electrode **21** and a sensing electrode **22** adjacent to each other. Each of the dummy electrodes **23** is in a H shape and the H-shaped dummy electrodes in each row are connected to one another.

[0044] Similar to the first embodiment, driving electrodes **21** in a same row are connected to one another through a first wiring to form a driving line **26**, strip-shaped sensing electrodes **22** in a same column are connected to one another through a second wiring to form a sensing line **27** and dummy electrodes **23** in a same row are connected to one another through a third wiring to form a dummy electrode line **28**. Furthermore, in this embodiment, all the dummy electrodes **23** are electrically connected to one another. As shown in FIG. 3, dummy electrode lines **28** in different rows are extended through a same electrode lead in order to apply a same voltage to all the dummy electrodes simultaneously.

[0045] Since the first wiring is intersected with the second wiring, one of them is located on a same conductive layer as the common electrode layer **102** and the other is inevitably a conductive bridging which is on a different conductive layer from the common electrode layer **102**. That is, the intersection **24** of the first wiring with the second wiring is inevitably configured in a conductive bridging structure. Similarly, since the second wiring is intersected with the third wiring, one of them is on a same conductive layer as the common electrode

layer **102** and the other is inevitably a conductive bridging on a different conductive layer from the common electrode layer **102**.

[0046] Due to a smaller width of the intersection **25** of the H-shaped dummy electrode **23** and the strip-shaped sensing electrode **22**, the third wiring is preferably on a same conductive layer as the common electrode layer **102**, that is, the strip-shaped sensing electrodes **22** are electrically connected to one another through conductive bridgings, to reduce the complexity of forming through-holes for bridgings.

[0047] Of course, the shape of the driving electrode may be exchanged with the shape of the sensing electrode. In other words, the plurality of driving electrodes are square electrodes arranged in an array, strip-shaped sensing electrodes are disposed between every two adjacent columns of driving electrodes, and the dummy electrode is disposed between the driving electrode and the sensing electrode adjacent to each other. Each of the dummy electrodes is in a H shape and the H-shaped dummy electrodes in each row are connected to one another. Furthermore, the arrangement of the driving electrodes may be exchanged with the arrangement of the sensing electrodes, that is, driving electrodes in a same column are connected to one another through the first wiring to form a driving line and sensing electrodes in a same row are connected to one another through the second wiring to form a sensing line.

[0048] In the above embodiment, the common electrode layer **102** on the color film substrate includes a plurality of sensing electrodes, a plurality of driving electrodes and a plurality of dummy electrodes, wherein the common electrode layer **102** can perform functions of touch panel. Therefore, the touch panel is saved and the LCD is lighter and thinner as compared to the prior technology.

[0049] It is to be noted that the common electrode layer **102** in this embodiment is further adapted to perform detection of touch signal in addition to normal display. Except for the shapes and structures according to the first embodiment and the second embodiment, other structures may be adopted for the common electrode layer **102**, such as the conventional rhombic electrode structure in which no dummy electrode is provided, as long as the most areas of the common electrode layer **102** are conductive while achieving the function of touch detection.

Third Embodiment

[0050] Based on the TN LCD device disclosed in each of the above two embodiments, the TN LCD device integrated with the touch control function disclosed in this embodiment performs detection of touch signal by the principle of touch detection preferably in a capacitive touch panel. The capacitive touch panel may determine whether a touch occurs and detect the position of the occurring touch through detecting changes in the mutual capacitance between the sensing electrodes and the driving electrodes.

[0051] The principle of touch detection in the capacitive touch panel is shown in FIG. 4. A driving signal is applied to the driving electrode by the signal source **41**, and a detecting circuit **42** is used for signal detection. When a pointing object (generally a finger) touch the surface of the touch panel, there exists a current flowing into the finger, and ideally only the capacitance value of the mutual capacitor **C1** between the sensing electrode and driving electrode is changed, and then the minor change of the current caused by the change of the

mutual capacitor **C1** is detected by the detecting circuit **42**, thus the position where the touch occurs is determined.

[0052] In this embodiment, most areas of the common electrode layer **102** are disposed with conducting electrodes, and when the conducting electrodes are used for touch detection, parasitic capacitors inevitably exist between the common electrode layer **102** with any one of the pixel electrodes, the data lines, the scanning lines and the lower COM (located on a surface of the array substrate facing the liquid crystal layer, and used to form storage capacitors with the pixel electrodes). The parasitic capacitors formed between the driving electrodes of the common electrode layer **102** and any of the structures listed above are driving parasitic capacitors **C2**, and the parasitic capacitors formed between the sensing electrodes and any of the structures listed above are sensing parasitic capacitors **C3**.

[0053] Accordingly, in practical operation, when the signal source **41** sends an AC signal, the AC signal is sent into the detecting circuit **42** through a driving electrode resistor **R1**, the mutual capacitor **C1** and an sensing electrode resistor **R2**; while the greater driving parasitic capacitor **C2** and sensing parasitic capacitor **C3** have smaller capacitive reactance with respect to the AC signal sent from the signal source **41**, and respective equivalent resistor **R3** and inductor of the data line and the scanning line may prevent the AC signal from flowing into the ground; thus the AC signal is allowed to sequentially pass through the driving parasitic capacitor **C2** and the sensing parasitic capacitor **C3**, which form a current channel **43**. After the AC signal passes through the current channel **43**, a great basal signal (noise signal) is formed at the detecting circuit **42**. Furthermore, since the signal corresponding to the change in the capacitance of mutual capacitor **C1** is generally minor and tends to be submerged in the greater basal signal, it is difficult to detect the signal corresponding to the change in the capacitance of mutual capacitor **C1** by the detecting circuit **42**, causing failure in detection and decrease in the sensitivity of the touch control sensitivity of the LCD device.

[0054] In order to improve the sensitivity in touch control of the LCD device, as shown in FIG. 6, the LCD device may further include a third insulating layer **105** disposed between the second insulating layer **106** and the pixel electrode layer **104**. The third insulating layer **105** may be an organic film, and the thickness **J** of the organic film may be limited as following: $1\ \mu\text{m} \leq J \leq 10\ \mu\text{m}$.

[0055] The presence of the third insulating layer **105** functions to increase the distance between the two plates of the parasitic capacitor, thus the capacitances of the driving parasitic capacitor **C2** and the sensing parasitic capacitor **C3** are reduced, the capacitance change caused from the presence of the parasitic capacitor when the touch occurs is reduced in turn, and the noise is reduced, resulting in the improvement of sensitivity in touch control of the LCD device.

Fourth Embodiment

[0056] In order to further reduce the effect of the parasitic capacitor on touch detection, as shown in FIG. 7, different from the above embodiments, the TN LCD device according to the fourth embodiment further includes: a first transparent electrode layer **108** disposed between the first insulating layer **107** and the gate electrode layer **121** as shown in FIG. 12, where the first transparent electrode layer **108** covers the scanning lines of the gate electrode layer **121** but does not cover an area of the gate electrodes at the gate electrode layer **121**, and does not affect the normal operation of the TFTs; a

fourth insulating layer **110** disposed between the first transparent electrode layer **108** and the gate electrode layer **121** is used for isolating the gate electrode layer **121** from the first transparent electrode layer **108**.

[0057] Preferably, the first transparent electrode layer **108** is partially overlapped with the pixel electrodes to form storage capacitors with the pixel electrodes. That is, the first transparent electrode layer **108** serves as the lower COM of the LCD device and there is no need to additionally form the lower COM.

[0058] It is to be noted that the first transparent electrode layer **108** in this embodiment is arranged opposite to the common electrode layer **102**, and plan views of the areas of the first transparent electrode layer **108** and the common electrode layer **102** which are opposite to each other are the same (namely in the area where the first transparent electrode layer **108** does not cover the TFTs), except for the area of the TFTs.

[0059] Taking the common electrode layer **102** disclosed in the first embodiment as an example, the plan view of the first transparent electrode layer **108** according to the fourth embodiment is shown in FIG. 8. Each of the dummy electrode blocks **33** in a same row on the first transparent electrode layer **108** is electrically connected to a sensing electrode block **32** in the hollowed-out part of the dummy electrode block **33** through a fourth wiring which is on a same conductive layer as the first transparent electrode layer **108**. The dummy electrode blocks **33** and sensing electrode blocks **32** are leaded to a non-display area of the LCD device through second electrode leads **35**.

[0060] The driving electrode blocks **31** in a same row on the first transparent electrode layer **108** are electrically connected to one another through a fifth wiring which is on a same conductive layer as the first transparent electrode layer **108**, and the driving electrode blocks in respective rows are leaded to the non-display area of the LCD device through first electrode leads **34**. That is, it is not necessary to use conductive bridgings for the connecting the electrode blocks to each other on the first transparent layer **108**.

Fifth Embodiment

[0061] Taking the TN LCD device disclosed in the fourth embodiment as an example, the control method of the TN-type LCD device is disclosed according to the fifth embodiment. The control method is used to implement touch detection during normal display. The schematic diagram showing the means for performing control of the pixel electrodes, the scanning lines, the data lines, and individual electrodes on the first transparent conductive layer **108** is shown in FIG. 9, and the schematic diagram showing the control of the driving electrodes and sensing electrodes of the common electrode layer is shown in FIG. 10. In combination of the structure of the mentioned above TN-type LCD device, the method includes:

[0062] dividing a time-sharing period T during normal display into a first duration $t1$ and a second duration $t2$, where the time-sharing period is a period during which the common electrode layer **102** performs detection of touch signal and provides common electrode signal; the first duration $t1$ is the time duration for normal display and the second duration $t2$ is the time duration for touch driving.

[0063] It is to be noted that the length of the time-sharing period is not limited, as long as one complete touch detection can be accomplished in one time-sharing period. Generally,

the time-sharing period has an equal length as the scanning period of the LCD device, namely the length of the time-sharing period generally equals to the reciprocal of the driving frequency of the LCD device.

[0064] Specifically, the second duration is shorter than the retention time of liquid crystal molecules and longer than or equal to the scanning time for one detection of touch signal performed by the common electrode layer (hereinafter referred to as touch scanning time, namely, the second duration $t2$), in order to guarantee that at least one touch scan can be performed during the second duration. Therefore, touch detection may be achieved when normal display is maintained.

[0065] It is to be noted that liquid crystal molecules have the characteristics of retention, that is, the inter-electrode capacitor may not disappear at once after the voltage applied to the liquid crystal molecules disappears, and the steering angle of the liquid crystal molecules may not be recovered to the original state and may be maintained until a voltage is applied again to the liquid crystal molecules. The retention time of liquid crystal molecules described in this embodiment is the time period in which the liquid crystal molecules maintain the previous state when the driving voltage of the common electrode layer **102** changes. In this embodiment, the first duration $t1$ is preferably greater than half of the duration of the time-sharing period and the second duration $t2$ is less than half of the duration of the time-sharing period.

[0066] Moreover, since the retention time $t3$ of liquid crystal molecules is often constant, generally about 8 ms, and the time for one touch scanning of the common electrode layer is about 3 ms, accordingly in this embodiment the second duration is preferably less than 8 ms and more preferably is 3 ms.

[0067] In the first duration, the driving electrodes **1021**, sensing electrodes **1022** and dummy electrodes **1023** are applied a same common potential to achieve normal display. At this time, the pixel electrodes, scanning lines and data lines on the array substrate are driven in the normal display mode, and storage capacitors are formed between the first transparent electrode layer **108** and the pixel electrodes. Since the potential of the pixel electrodes during the normal display process is not zero, preferably respective electrodes on the first transparent electrode layer **108** are always grounded;

[0068] It is to be noted, during the first duration $t1$, in order to prevent the ageing of the liquid crystal operating under the driving voltage in a same direction for a long time, the driving voltage applied to the pixel electrodes needs to change over time and the duration of the same voltage level should be less than the ageing time of the liquid crystal. Preferably, in this embodiment the driving voltage applied to the pixel electrodes is in the form of square wave, and the polarity of the square wave is changed in an alternating way with respect to the grounding state (zero potential in this embodiment). The manner for applying voltage to the scanning lines and the data lines is the same as that for the conventional display drive in the prior art, and will not be described here. FIG. 9 is only used to show that the potentials of the scanning lines and the data lines are not zero during normal display.

[0069] During the second duration $t2$, a driving voltage of touch detecting is applied to the sensing electrodes **1022** and driving electrodes **1021** of the common electrode layer **102** and the dummy electrodes **1023** are grounded for detection of touch signal.

[0070] It is to be noted that during the second duration $t2$, the potential of the pixel electrodes is floating (may not be

zero) and the power supply to the scanning lines and data lines is stopped; the parts in which the first transparent electrode layer 108 opposite to the driving electrodes 1021 (i.e., the areas of the driving electrode blocks 31 on the first transparent electrode layer 108) are connected to a same signal as the corresponding driving electrodes 1021, and the parts on the first transparent electrode layer 108 corresponding to the sensing electrodes 1022 and dummy electrodes 1023 (i.e., the areas of the sensing electrode blocks 32 and the dummy electrode blocks 33 on the first transparent electrode layer 108) are grounded.

[0071] Specifically, the control for the driving electrodes and sensing electrodes of the common electrode layer will be explained in conjunction with FIG. 10. Tx indicates the driving line formed by electrically connecting the driving electrodes in a same row of the common electrode layer, Rx indicates the sensing line formed by electrically connecting the sensing electrodes in a same column of the common electrode layer. The horizontal coordinate indicates time and the vertical coordinate indicates voltage.

[0072] During the second duration t2, driving voltages (i.e., the Tx signals shown in FIG. 10) are sequentially applied to individual driving lines (i.e., from driving line Tx2 to driving line Txn), and sensing signals are obtained by corresponding sensing lines Rx. Thereafter, the sensing signals are detected by the detecting circuit to determine the position where the touch occurs. Taking the driving line Tx1 as an example, a driving voltage is applied to the driving line Tx1 during time duration t21, and then a common voltage (i.e., COM voltage) is applied to the driving line Tx1 during time duration t22. Similarly, the driving voltages and the common voltage are sequentially applied to the driving lines (from driving line Tx2 to driving line Txn), to achieve the touch detection. During the first duration t1, the common voltage is simultaneously applied to all the driving lines, sensing lines and dummy electrode lines of the common electrode layer to achieve normal display.

[0073] In conjunction with FIG. 4, FIG. 5 and FIG. 7, the parasitic capacitor between the common electrode layer 102 and the pixel electrode layer 104 will be analyzed. The mechanism of the parasitic capacitor affecting the detection process of the detection circuit 42 is that the charge-discharge process of the parasitic capacitor affects the charge-discharge of the mutual capacitor by the signal voltage which is provided by the signal source 41. Since the quantity of electricity of the pixel electrode is constant when the pixel electrode is floating, the floating pixel electrode can not be charged-discharged in the touch detection process. The floating pixel electrode will not be taken into account when the driving parasitic capacitance and sensing parasitic capacitance are calculated, because the floating electrode only affects the quantity of electricity and voltage of parasitic capacitor and does not affect the capacitance variation of parasitic capacitor, thus reducing the intensity of noise at the detecting circuit 42.

[0074] Next, the parasitic capacitor between the common electrode layer 102 and the first transparent electrode layer 108 will be analyzed. In the touch detection process, the potential applied to the driving electrode block 31 of the first transparent electrode layer 108 is the same as that applied to a driving electrode 1021 of the corresponding common electrode layer 102, which is equivalent to apply a same potential to the two plates of the driving parasitic capacitor. Therefore, there is no current flowing through the driving

parasitic capacitor, thus the effect of driving parasitic capacitor on the current variation measured by the detecting circuit is further eliminated.

[0075] Furthermore, since driving electrode block 31, the sensing electrode block 32 and the dummy electrode block 33 of the first transparent electrode layer 108 are isolated and separated from each other, and also the driving electrode 1021, the sensing electrode 1022 and the dummy electrode 1023 of the common electrode layer 102 are isolated and separated from each other, the channel of the driving parasitic capacitor formed between driving electrode 1021 and the driving electrode block 31 and the channel of the sensing parasitic capacitor formed between the sensing electrode 1022 and the sensing electrode block 32 are opened, as shown in FIG. 5, the current path 43 in the FIG. 4 is grounded, thus significantly reducing the AC signal sent by the signal source 41 which reaches the detecting circuit 42 through the driving parasitic capacitor C2 and the sensing parasitic capacitor C3, significantly reducing the intensity of basal signal formed at the detecting circuit 42 and improving the accuracy of the touch detection.

[0076] Next, the parasitic capacitor between the common electrode layer 102 and the scanning lines, and the parasitic capacitor between the common electrode layer 102 and data lines will be analyzed. Since the first transparent electrode layer 108 covers the scanning lines completely, the effect of signal variations in the scanning lines and data lines on the common electrode layer 102 are shielded, and thus the intensity of basal signal formed at the detecting circuit 42 is further reduced and the accuracy of the touch detection is improved.

Sixth Embodiment

[0077] Different from the above embodiments, the first transparent electrode layer of the TN LCD device disclosed in this embodiment is disposed between the second insulating layer 106 and the third insulating layer 105, and the first transparent electrode layer covers the data lines and the scanning lines but does not cover the area of the TFTs.

[0078] The control method of the TN-type LCD device is the same as that disclosed in above embodiments, and difference between this embodiment and the above embodiments lies in that, since the first transparent electrode layer covers the data lines and the scanning lines, with regard to the parasitic capacitor between the common electrode layer 102 and the data lines and the parasitic capacitor between the common electrode layer 102 and the scanning lines, the first transparent electrode layer may shield effects of the data lines and scanning lines on the common electrode layer 102 due to the fact that the potential applied to the driving electrode block 31 of the first transparent electrode layer is same as that applied to the driving electrode 1021, therefore, the intensity of the basal signal formed at the detecting circuit 42 is further reduced to improve the accuracy of the touch detection.

[0079] The description of respective parts in the specification is made in a progressive way, each part focuses on a difference from the other parts, and the sameness between one part and other parts may be referred to by each other.

[0080] With the above descriptions of the disclosed embodiments, the skilled in the art may practice or use the present invention. Various modifications to the embodiments are apparent for the skilled in the art. The general principle suggested herein can be implemented in other embodiments without departing from the spirit or scope of the present invention. Therefore, the present invention should not be

limited to the embodiments disclosed herein, but has the widest scope that is conformity with the principle and the novel features disclosed herein.

What is claimed is:

1. A twisted nematic liquid crystal display device integrated with a touch control function, the device comprising:

an array substrate;

a color film substrate disposed opposite the array substrate;

a liquid crystal layer disposed between the array substrate and the color film substrate; and

a common electrode layer disposed on a surface of the color film substrate facing the liquid crystal layer, wherein the common electrode layer comprises:

a plurality of sensing electrodes,

a plurality of driving electrodes, and

a plurality of dummy electrodes located between the sensing electrodes and the driving electrodes, wherein the sensing electrodes, the driving electrodes, and the dummy electrodes are insulated from one another.

2. The twisted nematic liquid crystal display device according to claim 1, further comprising a black matrix layer located between the color film substrate and the common electrode layer, wherein the sensing electrodes, the driving electrodes and the dummy electrodes are isolated and insulated from each other by gaps in the common electrode layer, and the gaps are covered by the black matrix layer.

3. The twisted nematic liquid crystal display device according to claim 1, wherein:

the driving electrodes in a particular row are connected to one another through a first wiring to form a driving line, and the sensing electrodes in a particular column are connected to one another through a second wiring to form a sensing line; or

the driving electrodes in a particular column are connected to one another through a first wiring to form a driving line, and the sensing electrodes in a particular row are connected to one another through a second wiring to form a sensing line.

4. The twisted nematic liquid crystal display device according to claim 3, wherein:

the common electrode layer and the first wiring for electrically connecting the driving electrodes to one another are on a same conductive layer, and the second wiring for electrically connecting the sensing electrodes to one another is a conductive bridging which is on a different conductive layer from the common electrode layer; or the common electrode layer and the second wiring for electrically connecting the sensing electrodes to one another are on a same conductive layer, and the first wiring for electrically connecting the driving electrodes to one another is a conductive bridging which is on a different conductive layer from the common electrode layer.

5. The twisted nematic liquid crystal display device according to claim 1, wherein the dummy electrodes are electrically connected to one another.

6. The twisted nematic liquid crystal display device according to claim 1, wherein:

the plurality of driving electrodes are square and are arranged in a array, strip-shaped sensing electrodes are disposed between every two adjacent columns of driving electrodes, the dummy electrodes are disposed between the driving electrode and the sensing electrode adjacent

to the driving electrode, each of the dummy electrodes is in an H shape, and the H-shaped dummy electrodes in each row are connected to one another; or

the plurality of sensing electrodes are square electrodes arranged in an array, strip-shaped driving electrodes are disposed between every two adjacent columns of sensing electrodes, the dummy electrodes are disposed between the sensing electrode and the driving electrode adjacent to the driving electrode, each of the dummy electrodes is in an H-shape, and the H-shaped dummy electrodes in each row are connected to one another.

7. The twisted nematic liquid crystal display device according to claim 6, wherein the dummy electrodes in a particular row are electrically connected to one another through a third wiring, and the common electrode layer and the third wiring are on a same conductive layer.

8. The twisted nematic liquid crystal display device according to claim 3, wherein the driving electrodes and sensing electrodes are rhombic and are arranged in an array, the dummy electrode are disposed between the driving electrode and the sensing electrode adjacent to each other, and the dummy electrode is a hollowed-out rhombic electrode having a hollowed-out part in which driving electrode or sensing electrode is disposed.

9. The twisted nematic liquid crystal display device according to claim 8, wherein the dummy electrodes in a particular row or in a particular column are electrically connected to one another through a conductive bridging which is on a different conductive layer from the common electrode layer.

10. The twisted nematic liquid crystal display device according to claim 2, further comprising:

a gate electrode layer disposed on a surface of the array substrate facing the liquid crystal layer, wherein the gate electrode layer comprises gate electrodes and scanning lines;

a first insulating layer disposed on the gate electrode layer;

a silicon island disposed on the first insulating layer;

a source/drain electrode layer disposed on the silicon island, wherein the source/drain electrode layer comprises source electrodes, drain electrodes and data lines, wherein the gate electrode within the gate electrode layer, the first insulating layer, the silicon island, the source electrode, and the drain electrode collectively form a thin film transistor structure;

a second insulating layer disposed on the source/drain electrode layer;

a pixel electrode layer disposed on the second insulating layer; and

a third insulating layer disposed between the second insulating layer and the pixel electrode layer.

11. The twisted nematic liquid crystal display device according to claim 10, further comprising:

a first transparent electrode layer disposed between the first insulating layer and the gate electrode layer, wherein the first transparent electrode layer covers the scanning lines of the gate electrode layer and does not cover an area of the gate electrodes at the gate electrode layer; and

a fourth insulating layer disposed between the first transparent electrode layer and the gate electrode layer.

12. The twisted nematic liquid crystal display device according to claim 10, further comprising a first transparent electrode layer disposed between the second insulating layer and the third insulating layer, wherein the first transparent

electrode layer covers the data lines and the scanning lines and does not cover an area of the thin film transistors.

13. The twisted nematic liquid crystal display device according to claim 11, wherein the first transparent electrode layer is disposed opposite the common electrode layer, and plan views of the areas of the first transparent electrode layer and the common electrode layer which are opposite to each other are the same except for an area of the thin film transistors.

14. The twisted nematic liquid crystal display device according to claim 13, wherein the dummy electrode block of the first transparent electrode layer is connected to the sensing electrode block which is located in a hollowed-out part of the dummy electrode block.

15. A method of controlling a twisted nematic liquid crystal display device, for performing detection of touch signal, the method comprising:

dividing a time-sharing period during display into a first duration and a second duration, wherein during the time-sharing period, the common electrode layer is configured to detect a touch signal and to provide a common electrode signal, wherein the second duration is shorter than a retention time of liquid crystal molecules and is longer than or equal to a scanning time for one detection of the touch signal by the common electrode layer, and wherein the retention time of liquid crystal molecules is a time period during which the liquid crystal molecules maintain a previous state when a driving voltage of the common electrode layer changes;

during the first duration, applying a same common potential to a plurality of sensing electrodes, to a plurality of driving electrodes, and to a plurality of dummy electrodes of the common electrode layer to achieve normal display; and

during the second duration, grounding the dummy electrodes and applying a driving voltage for touch detection to the sensing electrodes and to the driving electrodes of the common electrode layer.

16. The control method of claim 15, wherein during the first duration of the time-sharing period, the first transparent electrode layer is grounded, wherein during the second duration, parts of the first transparent electrode layer opposite the driving electrodes and the corresponding driving electrodes are applied a same signal, and parts of the first transparent electrode layer opposite the sensing electrodes and the dummy electrodes are grounded.

17. The control method of claim 15, wherein the duration of the time-sharing period is equal to the duration of a scanning period of the liquid crystal display device.

18. The control method of claim 17, wherein the duration of the first duration is greater than half of the duration of the time-sharing period, and the duration of the second duration is less than half of the duration of the time-sharing period.

19. The control method according to claim 18, wherein the second duration is less than 8 ms.

20. The control method according to claim 19, wherein the second duration is equal to 3 ms.

* * * * *

专利名称(译)	液晶显示装置及其触摸控制方法		
公开(公告)号	US20140176465A1	公开(公告)日	2014-06-26
申请号	US14/085766	申请日	2013-11-20
[标]申请(专利权)人(译)	上海天马微电子有限公司		
申请(专利权)人(译)	上海天马微电子有限公司.		
当前申请(专利权)人(译)	上海天马微电子有限公司.		
[标]发明人	MA JUN ZHAO LIJUN		
发明人	MA, JUN ZHAO, LIJUN		
IPC分类号	G02F1/1333 G06F3/041		
CPC分类号	G02F1/13338 G02F1/134309 G02F1/1396 G02F2001/134318 G06F3/0412 G06F3/044 G06F3/041		
优先权	201210567635.0 2012-12-24 CN		
其他公开文献	US9494815		
外部链接	Espacenet USPTO		

摘要(译)

公开了一种集成有触摸控制功能的扭曲向列液晶显示装置。该装置包括阵列基板，与阵列基板相对设置的彩膜基板，以及设置在阵列基板和彩膜基板之间的液晶层。该器件还包括设置在彩色薄膜基板的面向液晶层的表面上的公共电极层。公共电极层包括多个感测电极，多个驱动电极，以及位于感测电极和驱动电极之间的多个虚设电极。另外，感测电极，驱动电极和虚设电极彼此绝缘。

