



US009104062B2

(12) **United States Patent**
Kim et al.

(10) **Patent No.:** **US 9,104,062 B2**
(45) **Date of Patent:** **Aug. 11, 2015**

(54) **LIQUID CRYSTAL DISPLAY DEVICE**

USPC 349/64
See application file for complete search history.

(75) Inventors: **Kyung-Chan Kim**, Paju-si (KR);
Gee-Sung Chae, Incheon-si (JP);
Soon-Wook Cha, Goyang-si (KR);
Kyung-Hoon Lee, Seoul (KR);
Joong-Pill Park, Paju-si (KR);
Moon-Bae Gee, Paju-si (KR); **Sung-hee**
Cho, Seoul (KR); **Kyung-Kook Jang**,
Daejeon-si (KR); **Kyung-Seok Jeong**,
Seoul (KR)

(73) Assignee: **LG DISPLAY CO., LTD.**, Seoul (KR)

(*) Notice: Subject to any disclaimer, the term of this
patent is extended or adjusted under 35
U.S.C. 154(b) by 0 days.

(21) Appl. No.: **13/455,229**

(22) Filed: **Apr. 25, 2012**

(65) **Prior Publication Data**

US 2013/0135558 A1 May 30, 2013

(30) **Foreign Application Priority Data**

Nov. 28, 2011 (KR) 10-2011-0125431

(51) **Int. Cl.**
G02F 1/1335 (2006.01)

(52) **U.S. Cl.**
CPC **G02F 1/133528** (2013.01); **G02F**
2001/133562 (2013.01); **G02F 2202/046**
(2013.01); **G02F 2202/108** (2013.01); **G02F**
2202/36 (2013.01)

(58) **Field of Classification Search**

CPC G02F 1/133603

(56) **References Cited**

U.S. PATENT DOCUMENTS

8,142,863	B2 *	3/2012	Palto	428/1.1
2003/0122980	A1 *	7/2003	Jin et al.	349/43
2007/0178615	A1 *	8/2007	Banin et al.	438/29
2008/0088225	A1 *	4/2008	Weiss et al.	313/503
2009/0268136	A1	10/2009	Palto	
2010/0066957	A1 *	3/2010	Miyazaki et al.	349/112
2011/0089809	A1 *	4/2011	Noh	313/483
2011/0281070	A1 *	11/2011	Mittal et al.	428/142

FOREIGN PATENT DOCUMENTS

CN	101563644 A	10/2009
CN	102044552 A	5/2011

* cited by examiner

Primary Examiner — Michael Caley

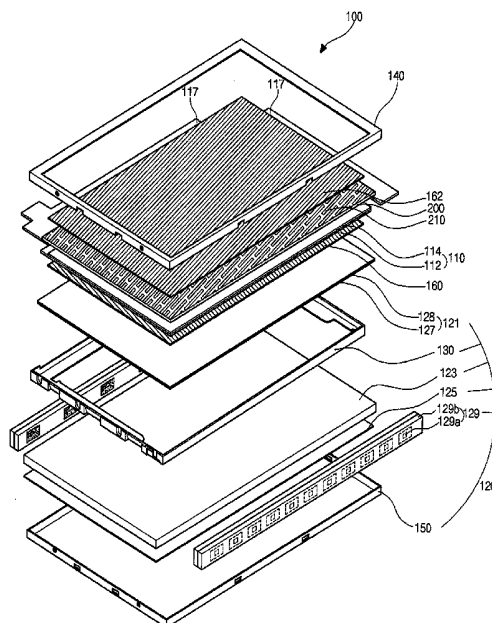
Assistant Examiner — Edmond Lau

(74) *Attorney, Agent, or Firm* — Birch, Stewart, Kolasch &
Birch, LLP

(57) **ABSTRACT**

A liquid crystal display (LCD) device includes a first sub-
strate; a second substrate; a liquid crystal layer disposed
between the first and second substrates; a color filter on one of
the first and second substrates; a first polarization plate under
the first substrate; a second polarization plate over the second
substrate; a backlight unit under the first polarization plate;
and a quantum rod sheet disposed between the color filter and
the second polarization plate.

14 Claims, 9 Drawing Sheets



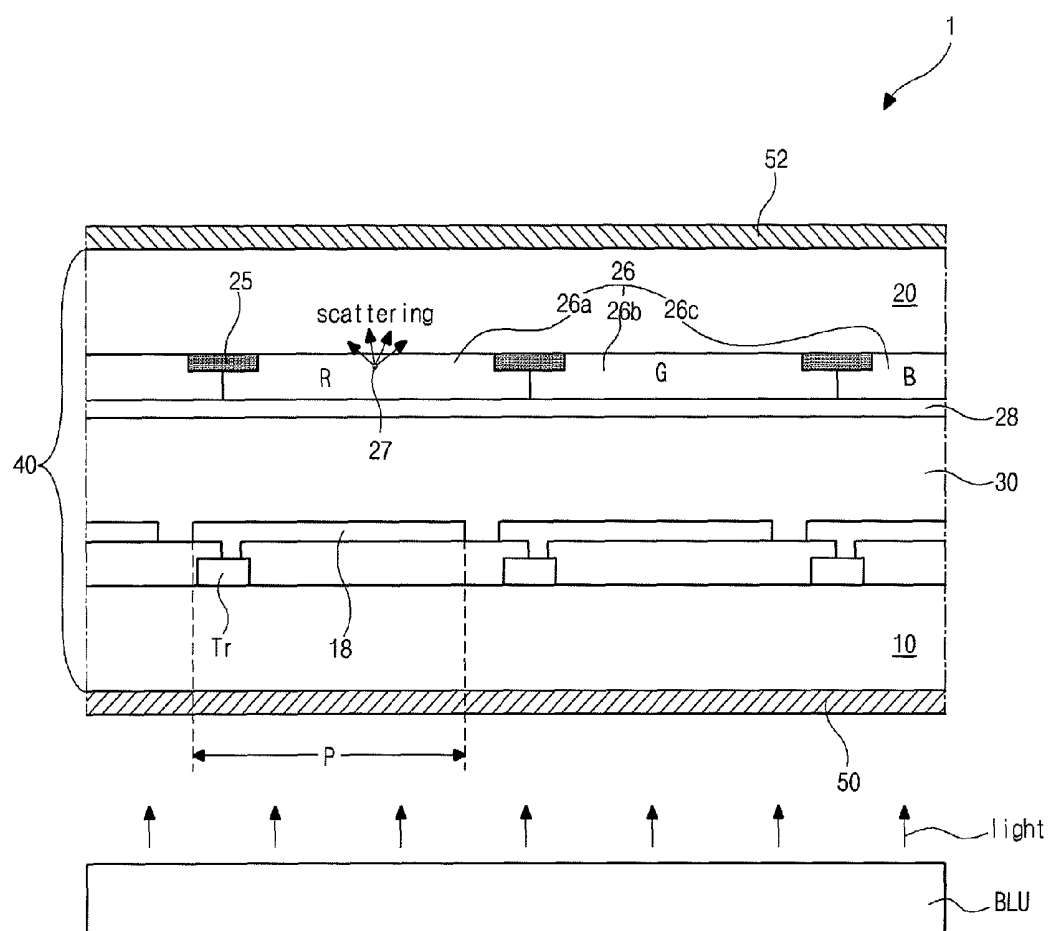


FIG. 2
RELATED ART

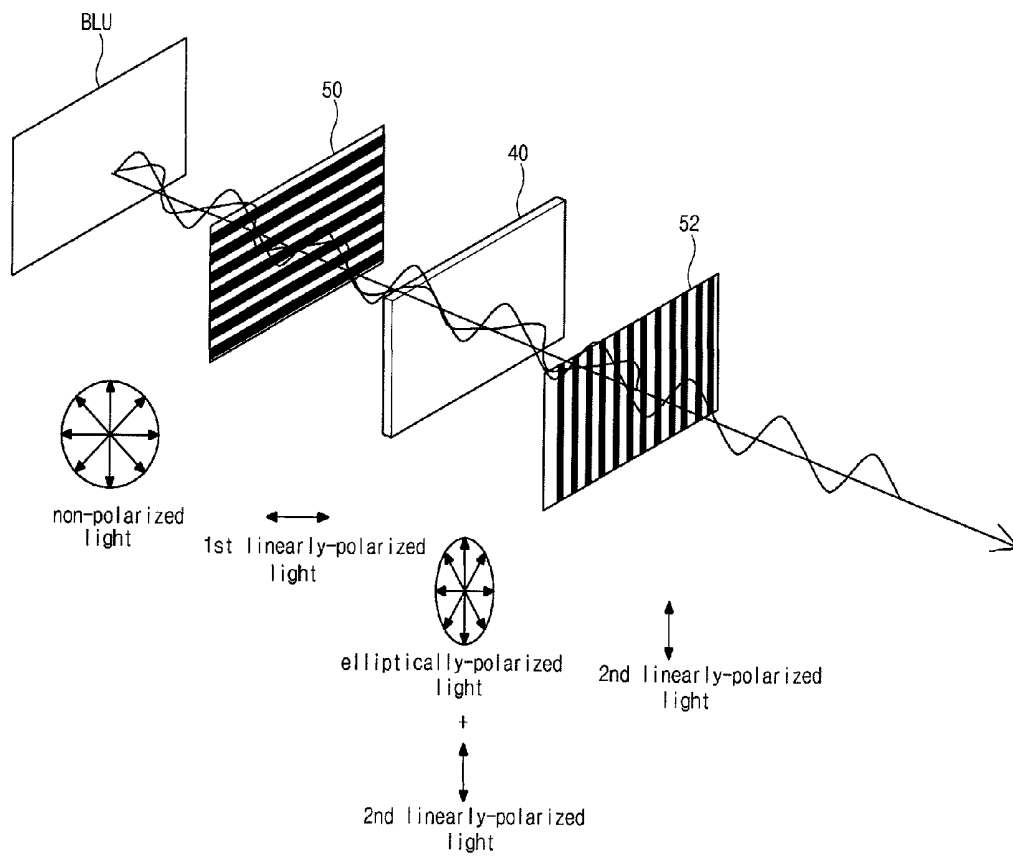


FIG. 3

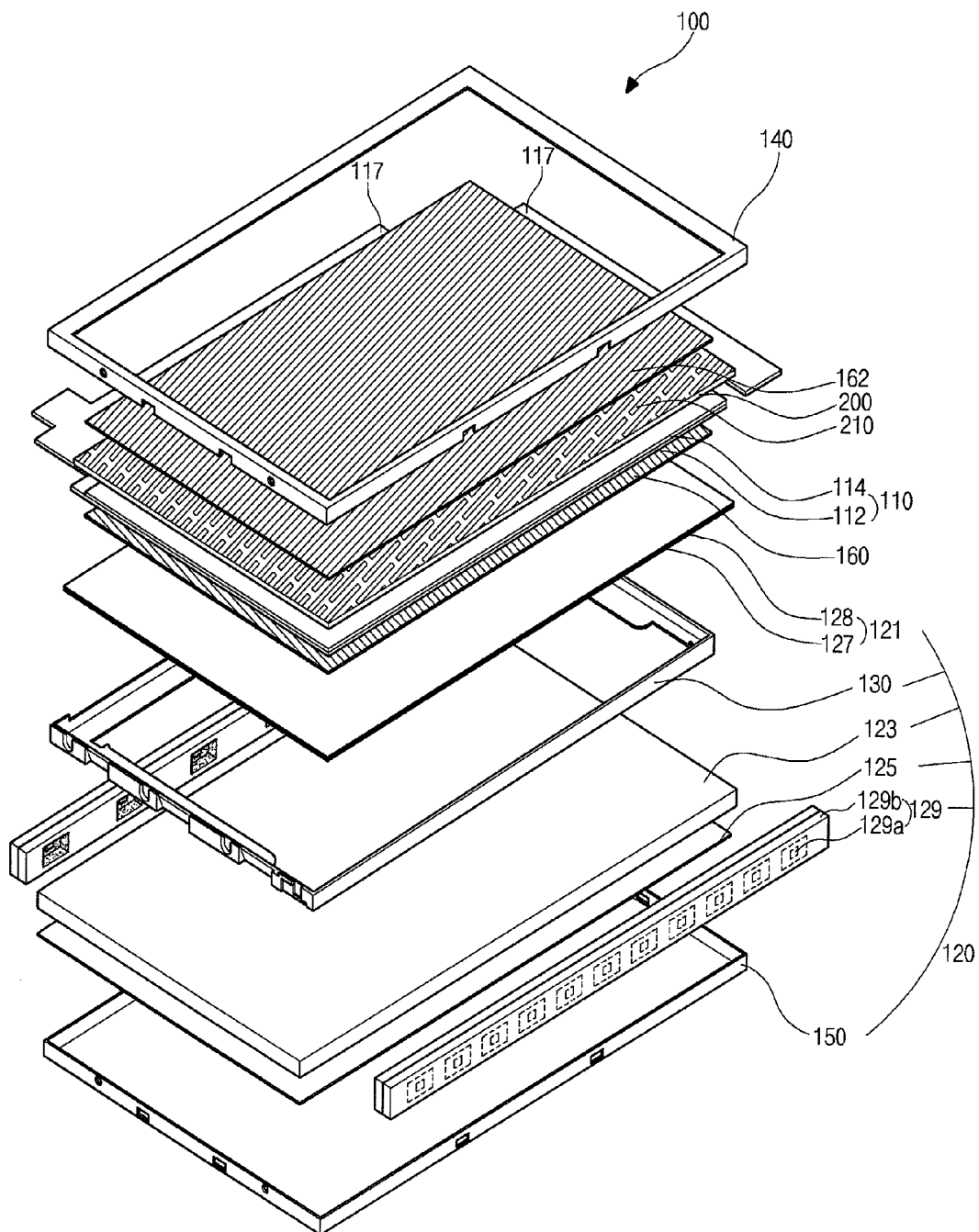


FIG. 4

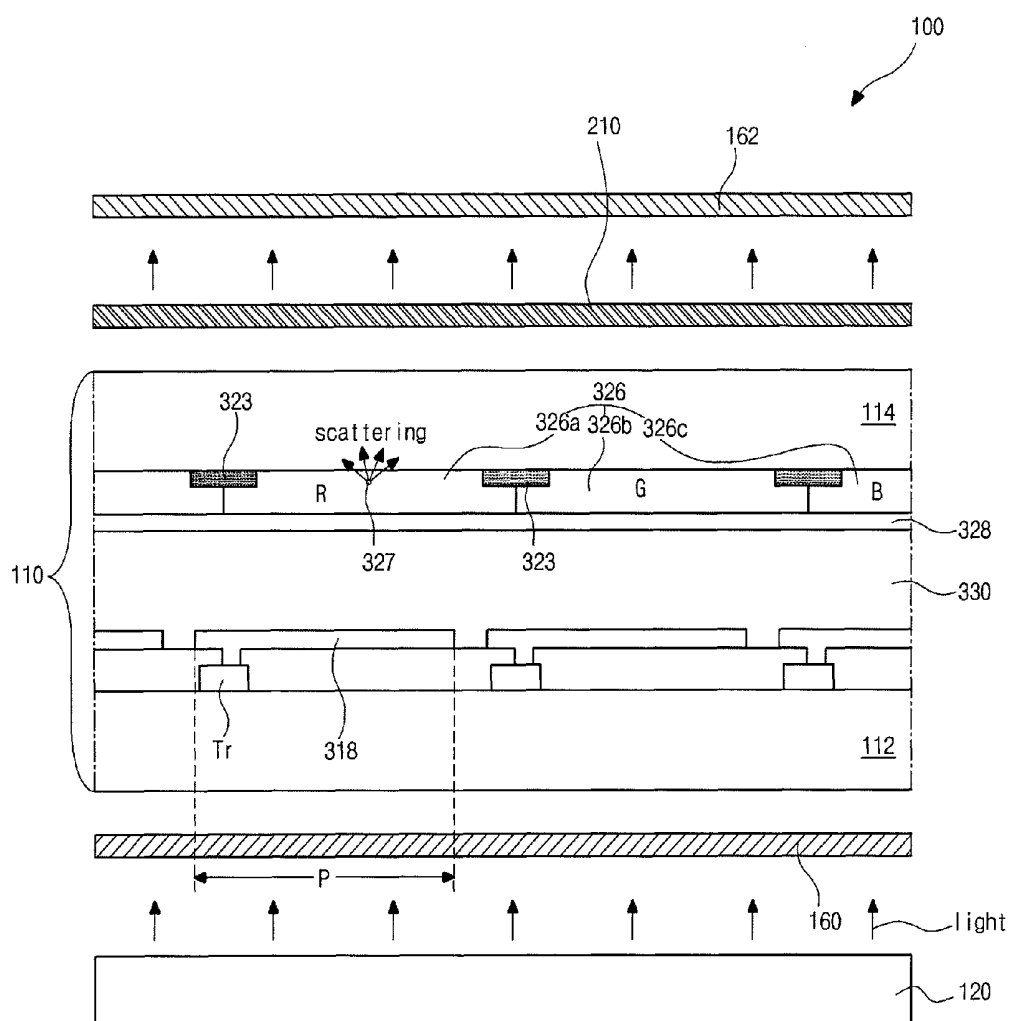


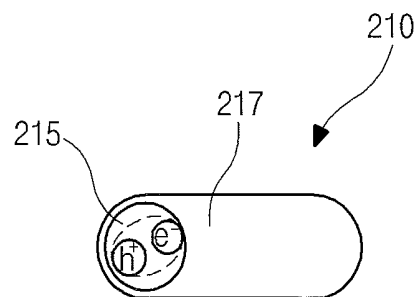
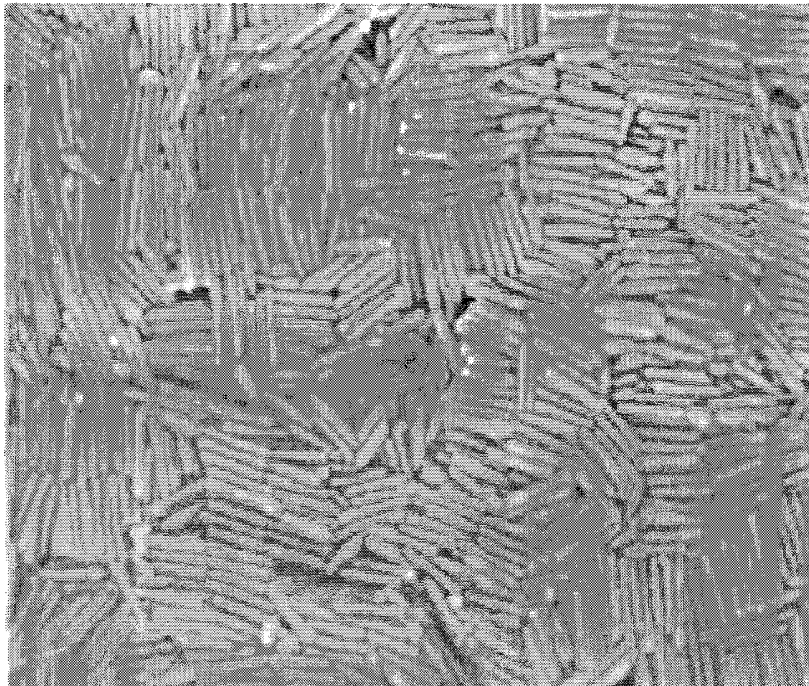
FIG. 5**FIG. 6**

FIG. 7

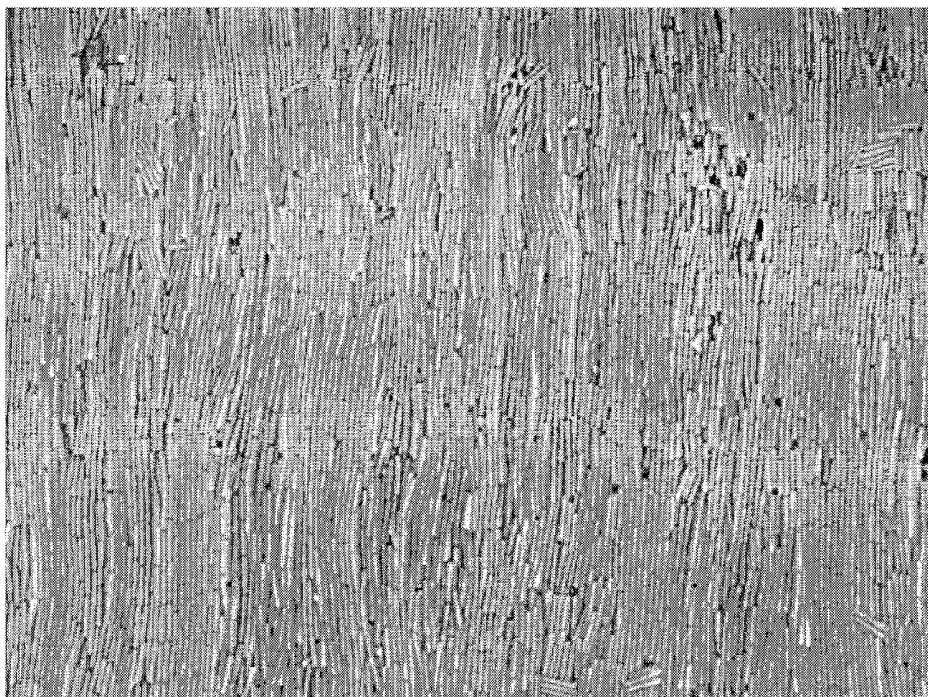


FIG. 8

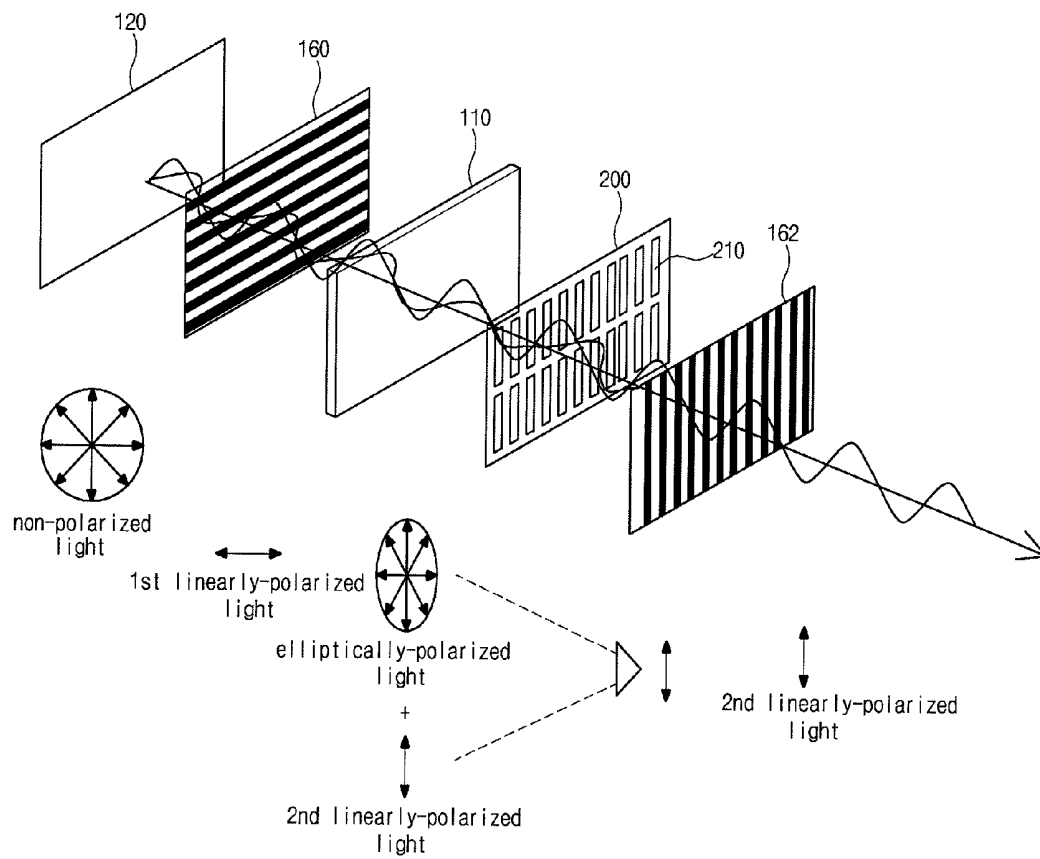


FIG. 9

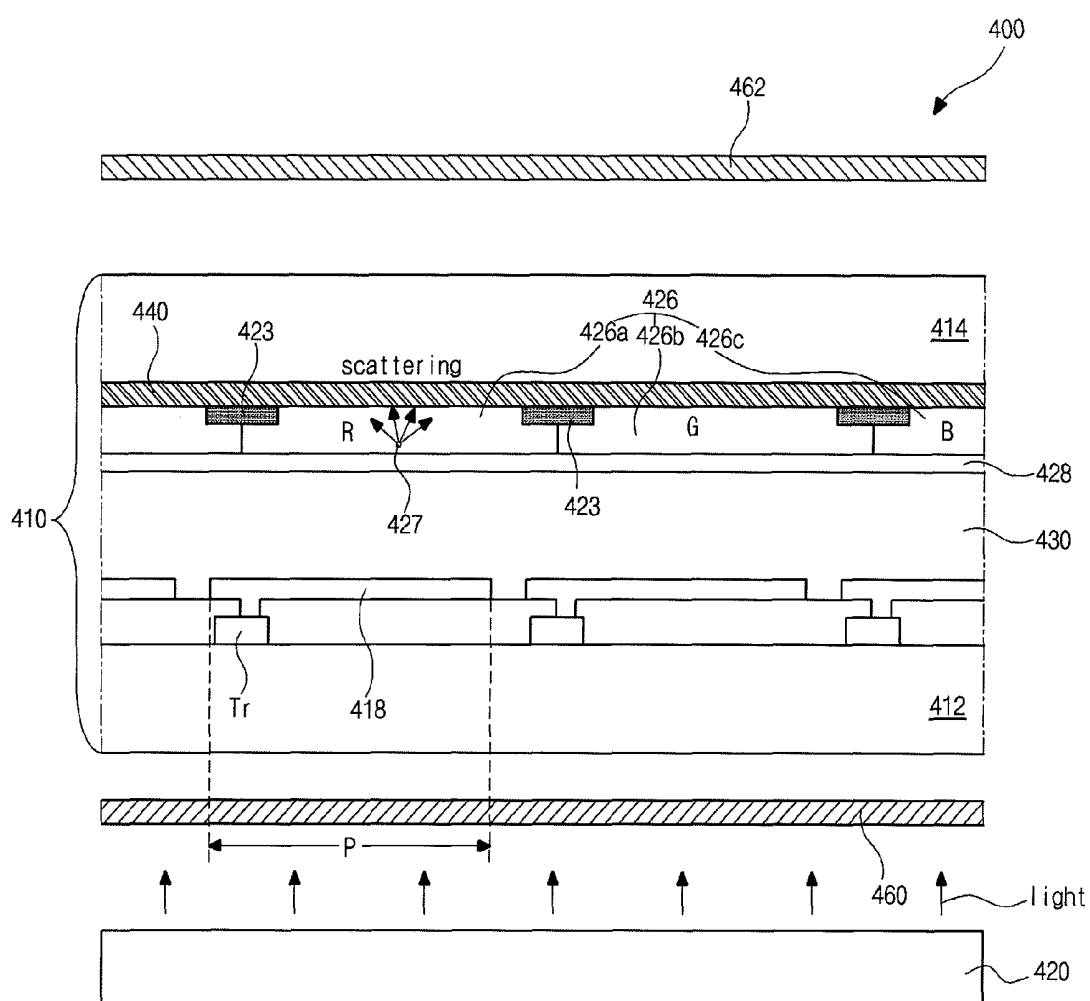
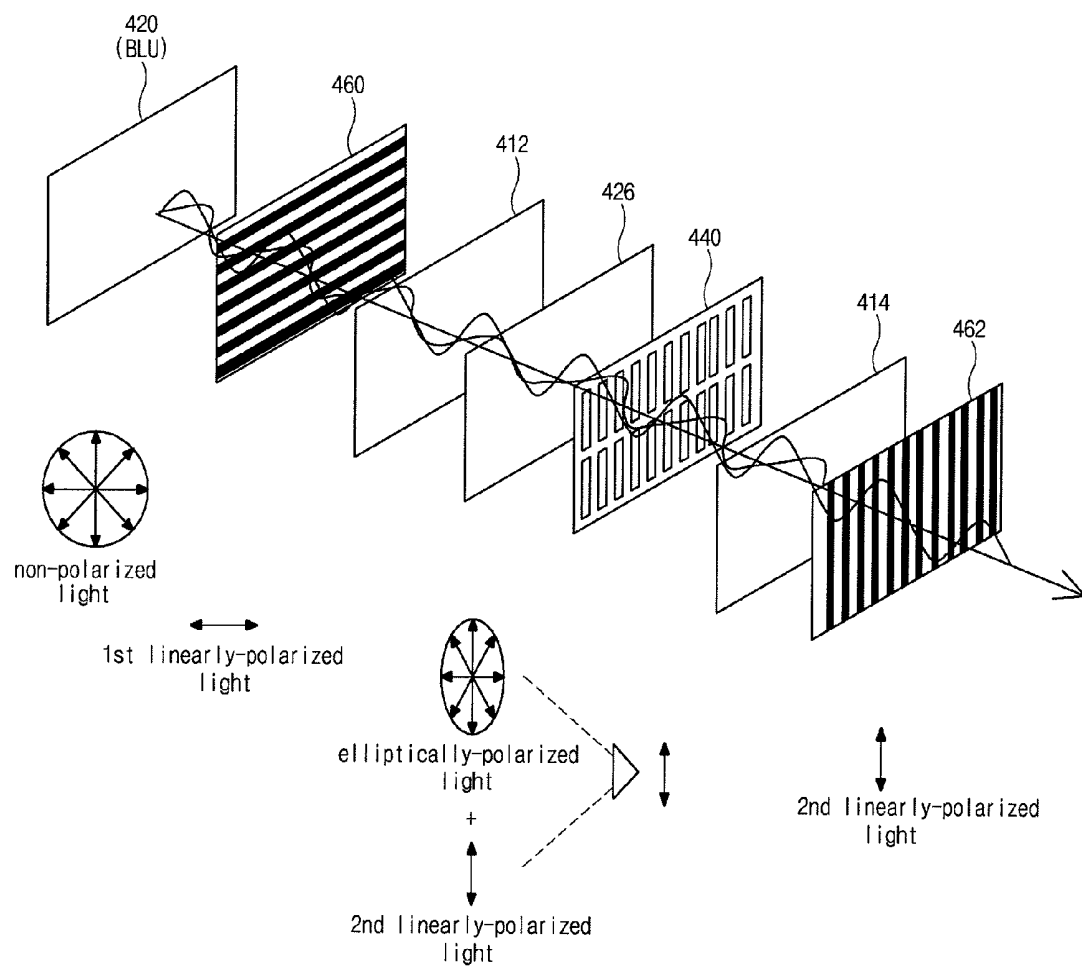


FIG. 10



LIQUID CRYSTAL DISPLAY DEVICE

CROSS-REFERENCE TO RELATED APPLICATION

This application claims priority to and the benefit of Korean Patent Application No. 10-2011-0125431 filed in Korea on Nov. 28, 2011, which is hereby incorporated by reference.

BACKGROUND OF THE INVENTION

1. Field of the Invention

Embodiments of the invention relate to a liquid crystal display (LCD) device, and more particularly, to an LCD device having a high transmissivity.

2. Discussion of the Related Art

Recently, LCD devices have become widely used as a technology-intensive and value-added next generation device of due to its low power consumption, thin profile, and portability. Since the LCD devices including a thin film transistor (TFT) as a switching element, referred to as an active matrix LCD (AM-LCD) devices, have excellent characteristics of high resolution and display of moving images, the AM-LCD devices have come to be widely used.

In general, an LCD device is fabricated through an array process, a color filter process and a cell process. In the array process, array elements such as a TFT and a pixel electrode are formed on a first substrate. In the color filter process, color filter elements such as a color filter layer and a common electrode are formed on a second substrate. In the cell process, a liquid crystal layer is interposed between the first and second substrates.

FIG. 1 is a cross-sectional view of a related art LCD device. Referring to FIG. 1, the LCD device 1 includes a first substrate 10, a second substrate 20 and a liquid crystal layer 30 therebetween.

On the first substrate 10, a gate line and a data line are formed. The gate and data lines cross each other to define a pixel region P. A TFT Tr is formed at a crossing portion of the gate and data lines, and a pixel electrode 18, which is disposed in the pixel region P, is connected to the TFT Tr.

On the second substrate 20, a black matrix 25 including an opening, and shielding the gate line, the data line and the TFT Tr is formed. In other words, the black matrix 25 has a lattice shape. A color filter layer 26 including red, green and blue color filter patterns 26a, 26b and 26c are formed on the second substrate 20. The red, green and blue color filter patterns 26a, 26b and 26c are disposed in the opening of the black matrix 25 to correspond to the pixel region P. A common electrode 28 is formed on an entire surface over the black matrix 25 and the color filter layer 26.

The first and second substrates 10 and 20 with the liquid crystal layer 30 therebetween are combined such that the common electrode 28 faces the pixel electrode 18 to obtain a liquid crystal panel 40. A seal pattern for preventing a leakage of the liquid crystal layer 30 is formed at edges of the first and second substrates 10 and 20. In addition, first and second alignment layers for determining an initial arrangement of the liquid crystal molecules of the liquid crystal layer 30 are formed.

First and second polarization plates 50 and 52 are formed at outer sides of the liquid crystal panel 40, respectively. Namely, the first polarization plate 50 is formed at an outer side of the first substrate 10, and the second polarization plate 52 is formed at an outer side of the second substrate 20. A

backlight unit BLU for providing light toward the first substrate 10 is disposed under the first polarization plate 50.

Accordingly, when a signal of the data line is provided into the pixel electrode 18 through the turned-on TFT Tr, an electric field is generated between the pixel electrode 18 and the common electrode 28. The liquid crystal molecules are driven by the electric field, and the transmissivity of light from the backlight unit BLU is changed such that images are displayed.

As mentioned above, the first and second polarization plates 50 and 52, which are disposed at the outer sides of the liquid crystal panel 40, have perpendicular transmittance axes. The light from the backlight unit BLU is polarized into a first linearly-polarized light by the first polarization plate 50, and the first polarization light is changed into a second linearly-polarized light by the liquid crystal layer 30. The second linearly-polarized light passes through the second polarization plate 52 such that the light is incident to eyes of the user.

However, the first linearly-polarized light is incompletely changed into the second linearly-polarized light. Namely, the light provided onto the color filter layer 26 is scattered by pigments 27 of the color filter layer 26 such that parts of the first linearly-polarized light is changed into an elliptically-polarized light, and not the second linearly-polarized light.

Accordingly, the light incident to the eyes of the user is about 5 to 6% of the light from the backlight unit of the LCD device 1. Namely, a light efficiency of the LCD device 1 is very low.

FIG. 2 shows polarization conditions of lights from the backlight unit, the first polarization plate, the liquid crystal panel and the second polarization plate in the related art LCD device. Referring to FIG. 2, in the related art LCD device, the non-polarized light is emitted from the backlight unit BLU. The non-polarized light is changed to the first linearly-polarized light through the first polarization plate 50, and the first linearly-polarized light is changed into the elliptically-polarized light as well as the second linearly-polarized light through the liquid crystal panel 40 because of scattering by pigments 27 of the color filter layer 26 shown in FIG. 1. The elliptically-polarized light can not pass through the second polarization plate 52 such that transmittance and brightness of the LCD device is lowered.

SUMMARY OF THE INVENTION

Accordingly, embodiments of the invention are directed to an LCD device that substantially obviates one or more of the problems due to limitations and disadvantages of the related art, and have other advantages.

An object of the invention is to provide an LCD device having high transmissivity.

According to an embodiment of the invention, a liquid crystal display (LCD) device includes a first substrate; a second substrate; a liquid crystal layer disposed between the first and second substrates; a color filter on one of the first and second substrates; a first polarization plate under the first substrate; a second polarization plate over the second substrate; a backlight unit under the first polarization plate; and a quantum rod sheet disposed between the color filter and the second polarization plate.

Additional features and advantages of the invention will be set forth in the description which follows, and in part will be apparent from the description, or may be learned by practice of the invention. The objectives and other advantages of the invention will be realized and attained by the structure par-

ticularly pointed out in the written description and claims hereof as well as the appended drawings.

It is to be understood that both the foregoing general description and the following detailed description are examples and are explanatory and are intended to provide further explanation of the invention as claimed.

BRIEF DESCRIPTION OF THE DRAWINGS

The accompanying drawings, which are included to provide a further understanding of the invention and are incorporated in and constitute a part of this specification, illustrate embodiments of the invention and together with the description serve to explain the principles of the invention.

FIG. 1 is a cross-sectional view of a related art LCD device.

FIG. 2 shows polarization conditions of lights from a backlight unit, a first polarization plate, a liquid crystal panel and a second polarization plate in the related art LCD device of FIG. 1.

FIG. 3 is an exploded perspective view of an LCD device including a quantum rod sheet according to an embodiment of the invention.

FIG. 4 is a cross-sectional view of a portion of an LCD device according to an embodiment of the invention.

FIG. 5 shows a quantum rod of a quantum rod sheet for an LCD device according to an embodiment of the invention.

FIG. 6 is a picture of a quantum rod sheet including unarranged quantum rods.

FIG. 7 is a picture of a quantum rod sheet including arranged quantum rods.

FIG. 8 shows polarization conditions of lights from a backlight unit, a first polarization plate, a liquid crystal panel, a quantum rod sheet and a second polarization plate in an LCD device according to an embodiment of the invention.

FIG. 9 is a cross-sectional view of a portion of an LCD device according to an embodiment of the invention.

FIG. 10 shows polarization conditions of lights from a backlight unit, a first polarization plate, a liquid crystal panel, a quantum rod sheet and a second polarization plate in an LCD device according to an embodiment of the invention.

DETAILED DESCRIPTION OF THE EMBODIMENTS

Reference will now be made in detail to embodiments of the invention, examples of which are illustrated in the accompanying drawings.

FIG. 3 is an exploded perspective view of an LCD device including a quantum rod sheet according to an embodiment of the invention, and FIG. 4 is a cross-sectional view of a portion of an LCD device according to the invention.

Referring to FIGS. 3 and 4, an LCD device 100 includes a liquid crystal panel 110, a first polarization plate 160 at one side of the liquid crystal panel 110, a second polarization plate 162 at the other side (or the opposite side) of the liquid crystal panel 110, a quantum rod sheet 200, and a backlight unit 120. The first polarization plate 160 is disposed at one side of the liquid crystal panel 110, and the second polarization plate 162 is disposed at the other side of the liquid crystal panel 110. The quantum rod sheet 200 is disposed between the liquid crystal panel 110 and the second polarization plate 162, and the backlight unit 120 is disposed under the first polarization plate 160. The LCD device 100 may further include a main frame 130, a top frame 140 and a bottom frame 150 for modularization. The main frame 130 covers the sides of the liquid crystal panel 110, and the top frame 140 covers

the front edges of the liquid crystal panel 110. The bottom frame 150 covers the rear side of the backlight unit 120.

The liquid crystal panel 110 includes first and second substrates 112 and 114 facing each other, and a liquid crystal layer 330 therebetween.

On the first substrate 112, a gate line and a data line are formed. The gate and data lines cross each other to define a pixel region P. A TFT Tr is formed at a crossing portion of the gate and data lines and connected to the gate and data lines. A pixel electrode 318, which is disposed in the pixel region P, is connected to the TFT Tr.

On the second substrate 114, a black matrix 323 including an opening and shielding the gate line, the data line and the TFT Tr is formed. In other words, the black matrix 323 has a lattice shape. A color filter layer 326 including red, green and blue color filter patterns 326a, 326b and 326c are formed on the second substrate 114. The red, green and blue color filter patterns 326a, 326b and 326c are disposed in the opening of the black matrix 323 to correspond to the pixel region P. A common electrode 328 is formed on an entire surface over the black matrix 323 and the color filter layer 326.

FIG. 4 shows the pixel electrode 318 on the first substrate 112 and the common electrode 328 on the second substrate 114 such that a vertical electric field is generated between the pixel and common electrodes 318 and 328. Alternatively, the pixel electrode 318 and the common electrode 328 may be alternately arranged with each other on the first substrate 112 such that a horizontal electric field is generated therebetween. Alternatively, the color filter layer 326 may be formed on the first substrate 112. Such a structure may be referred to as a color filter on TFT (COT) structure.

Referring back to FIG. 3, a printed circuit board 127 is connected to at least one side of the liquid crystal panel 110 via a connection means. The printed circuit board 127 may closely extend along a side surface of the main frame 130 or a rear surface of a bottom frame 150 in a modularization process.

When the TFT Tr is turned on by a scanning signal from a gate line, an image signal is applied to the pixel electrode 318 through the data line. Then, the liquid crystal molecules in the liquid crystal layer 330 between the first and second substrates 112 and 114 are driven by an electric field generated between the pixel and common electrodes 318 and 328. As a result, light transmissivity of the liquid crystal layer 330 is controlled such that the LCD device 100 can produce an image.

First and second polarization plates 160 and 162 are disposed at outer sides of the liquid crystal panel 110, respectively. Polarized light extending in a direction is transmitted through the first and second polarization plates 160 and 162.

An alignment layer for determining an initial arrangement of liquid crystal molecules may be disposed between the first substrate 112 and the liquid crystal layer 330, and between the second substrate 114 and the liquid crystal layer 330. In addition, a seal pattern preventing leakage of liquid crystal molecules is formed along an edge of one of the first and second substrates 112 and 114.

The backlight unit 120 for providing light onto the liquid crystal panel 110 is disposed under the liquid crystal panel 110. The backlight unit 120 includes a light source 129, a reflective sheet 125, a light guide plate 123 and an optical sheet 121. The light guide plate 123 is disposed on the reflective sheet 125, and the optical sheet 121 is disposed on the light guide plate 123.

The light source 129 is disposed at one side of the light guide plate 123. For example, the light source 129 may include one of a fluorescent lamp, such as a cold cathode

fluorescent lamp (CCFL) and an external electrode fluorescent lamp (EEFL), and a light emitting diode (LED). FIG. 3 shows the light source 129 as including LEDs 129a and an LED board 129b where the LEDs 129a are arranged. When the light source 129 includes the fluorescent lamp, the light source 129 includes a lamp guide for guiding an outer side of the fluorescent lamp.

The light from the light source 129 is processed into a plane light source during passage through the light guide plate 123 by a total reflection. The light guide plate 123 may have a pattern for guiding the light to the liquid crystal panel 110 and providing a uniform plane light source. For example, the pattern may be an elliptical pattern, a polygon pattern, and a hologram pattern, and may be formed at a bottom surface of the light guide plate 123.

The reflective sheet 125 is disposed under the light guide plate 123. The light is reflected on the reflective sheet to improve an optical efficiency. The optical sheet 121 on or over the light guide plate 123 includes a diffusion sheet and at least one concentrating sheet. The light, which passes through the light guide plate 123, is diffused and/or concentrated such that a uniform plane light is provided onto the liquid crystal panel 110.

FIG. 3 shows the light source 129 disposed at one side of the light guide plate 123. This arrangement may be referred to as to a side light type. Alternatively, the light source may be arranged on the reflective sheet without the light guide plate and with a diffusion sheet over the light source. This arrangement may be referred to as to a direct light type.

In an embodiment of the invention, the LCD device 100 includes the quantum rod sheet 200 between the liquid crystal panel 110 and the second polarization plate 162. The quantum rod sheet 200 includes a plurality of quantum rods 210 arranged along a direction. Namely, major axes of the quantum rods 210 are arranged to be substantially parallel to a transmission axis of the second polarization plate 162 and a surface of the liquid crystal panel 110. In other words, the major axes of the quantum rods 210 are arranged to be substantially perpendicular to an absorption axis of the second polarization plate 162. In addition to the major axis, each quantum rod 210 has a minor axis, whereby a ratio of the minor axis to the major axis of each quantum rod 210 is about 1:1.1 to 1:30.

The quantum rod sheet 200 may further include an auxiliary emitting material. For example, the auxiliary emitting material may include at least one of a quantum dot, an inorganic fluorescent substance and an organic fluorescent substance. In this instance, a weight ratio of the quantum rod 210 and the auxiliary emitting material may be about 99:1 to 50:50. Namely, the weight % of the quantum rod 210 is larger than or equal to that of the auxiliary emitting material. If the weight % of the auxiliary emitting material is larger than that of the quantum rod 210, a polarization property of the quantum rod sheet 200 is degraded.

Referring to FIG. 5 showing a quantum rod of a quantum rod sheet for an LCD device according to an embodiment of the invention, the quantum rod 210 includes a core 215 and a shell 217 surrounding the core 215. The core 215 has one of a sphere shape, an elliptical sphere shape, a polyhedron shape and a rod shape. Other shapes may be used for the core 215. FIG. 5 shows a sphere shape core 215. The shell 217 has a rod shape having a major axis and a minor axis. A cross section along the minor axis of the shell 217 has one of a circle shape, an ellipse shape and a polyhedron shape. The shell 217 may have other shapes. The shell 217 has a single-layered structure or a multi-layered structure and is formed of one or more semiconductor materials, an alloy thereof, an oxide material

and/or an impurity-doped material. A ratio of the minor axis of the shell 217 to the major axis of the shell 217 is about 1:1.1 to 1:30. Reference to an alloy includes compound semiconductors.

Alternatively, the quantum rod 210 may include the core 215 without a shell. The core 215 may have one of an elliptical sphere shape, and a rod shape. Other shapes may also be used. FIG. 5 shows a sphere shape core 215.

The core 215 of the quantum rod 210 includes a semiconductor material or an alloy of materials of groups II-VI, III-V, III-VI, VI-IV and IV in the periodic table or their mixture. For example, the core 215 of the quantum rod 210 may include at least one of CdSe, CdS, CdTe, ZnO, ZnSe, ZnS, ZnTe, HgSe, HgTe, CdZnSe, InP, InN, GaN, InSb, InAsP, InGaAs, GaAs, GaP, GaSb, AlP, AlN, AlAs, AlSb, CdSeTe, ZnCdSe, PbSe, PbTe, PbS, PbSnTe, and Ti_2SnTe_5 .

Even if the cores 215 are formed of the same material, a fluorescent wave length of the light from the quantum rod 210 is varied depending on a size of the core 215. The smaller size the core 215 has, the smaller wave length of the light is. By controlling the size of the core 215, lights in the visible range can be emitted.

Referring again to FIGS. 3 and 4, the quantum rod 210 absorbs the light from the backlight unit 120 and emits light. Since the internal quantum yield of the quantum rod 210 is about 100%, the light emitted from the quantum rod 210 has substantially the same brightness as the light from the backlight unit 120.

In the quantum rod sheet 200 including the quantum rods 210, the quantum rods 210 are arranged along a surface of the first and second substrates 112 and 114 of the liquid crystal panel 110. In addition, the major axes of the quantum rods 210 are arranged to be parallel to the transmission axis of the second polarization plate 162.

The quantum rods 210 are arranged on a transparent substrate by one of a voltage applying method, an aligning method using an alignment layer, an aligning method using a self-aligned monomer, and an aligning method using a reactive mesogen material. The aligning method for the quantum rods 210 is not limited to the above methods.

FIG. 6 is a picture of a quantum rod sheet including unarranged quantum rods, and FIG. 7 is a picture of a quantum rod sheet including arranged quantum rods.

Referring to FIG. 6, the quantum rods are unarranged (or randomly arranged). For example, groups of quantum rods 210 may present, whereby the groups of quantum rods 210 are aligned in different directions. For example, one group of the quantum rods 210 may be arranged in a first direction, while an adjacent group of the quantum rods 210 may be arranged in a direction perpendicular to the first direction. Yet another adjacent group of the quantum rods 210 may be arranged in a third direction is neither parallel nor perpendicular to the first direction. On the contrary, referring to FIG. 7, the quantum rods are arranged by at least one the above mentioned arranging method to be parallel to a direction. The aligning accuracy is measured by a polarization ratio. The polarization ratio of the quantum rod sheet can be measured by detecting light amount passing through an analyzer after irradiating horizontally or vertically polarized light toward the quantum rod sheet.

When light intensity from the light source is defined as "I", horizontally-polarized light intensity through the quantum rod sheet is defined as "Ih", and vertically-polarized light intensity through the quantum rod sheet is defined as "Iv", the

polarization ratio “PR” of the unarranged quantum rod sheet is defined as:

$$PR = (I_h - I_v) / (I_h + I_v)$$

When the quantum rods are arranged along a horizontal direction or a vertical direction, a horizontal direction polarization ratio “PRh” and a vertical direction polarization ratio “PRv” are respectively defined as:

$$PR_h = I_h / (I_h + I_v) \text{ and}$$

$$PR_v = I_v / (I_h + I_v)$$

The quantum rods **210** in the quantum rod sheet **200** in embodiments of the invention are arranged along a direction, and the horizontal direction polarization ratio “PRh” or the vertical direction polarization ratio “PRv” is larger than about 0.5 and equal to or smaller than 1, i.e., $(0.5 < PR_h \text{ or } PR_v \leq 1)$. Namely, when major axes of the quantum rods **210** are arranged along a direction, the quantum rods **210** absorbing the light, which is polarized along the direction and the other directions, from the backlight unit **120** emits the light being polarized along the direction. Accordingly, even if the polarized light by the first polarization plate **160** and the liquid crystal layer **130** is scattered by the pigments in the color filter layer **326**, the light emitted from the quantum rod sheet **200** including the quantum rods **210** has a linearly-polarized condition along the major axis direction of the quantum rods **210**. For example, the quantum rods **210** may absorb a UV ray, which has a wave length smaller than 450 nm, and emits the polarized light.

In embodiments of the invention, the quantum rod sheet **200** is disposed between the liquid crystal panel **110** and the second polarization plate **162** such that brightness of the LCD device **100** is improved.

FIG. 8 shows polarization conditions of lights from a backlight unit, a first polarization plate, a liquid crystal panel, a quantum rod sheet and a second polarization plate in an LCD device according to an embodiment of the invention, with use of LCD device of FIGS. 3 and 4, whereby the non-polarized light is emitted from the backlight unit **120**. The non-polarized light is changed to the first linearly-polarized light through the first polarization plate **160**. The first linearly-polarized light is parallel to the transmission axis of the first polarization plate **120**. The first linearly-polarized light is changed into the elliptically-polarized light as well as the second linearly-polarized light through the liquid crystal panel **110** because of scattering by pigments **327** of the color filter layer **326**. The second linearly-polarized light is perpendicular to the first linearly-polarized light. The light amount of the elliptically-polarized light may be about 3 to 10% of the first linearly-polarized light that passes through the first polarization plate **160**.

In the related art LCD device shown in FIG. 1, since the second polarization plate **52** has a transmission axis being substantially perpendicular to that of the first polarization plate **50**, the elliptically-polarized light can not pass through the second polarization plate **52** such that transmittance and brightness of the LCD device is lowered.

However, in the LCD device **100** according to an embodiment of the invention, the quantum rod sheet **200** absorbs the second linearly-polarized light and emits light that is second linearly-polarized. In addition, a part of the elliptically-polarized light by the elements in the liquid crystal panel **110**, for example, the pigments in the color filter layer **326**, is re-polarized into the second linearly-polarization light by the quantum rod sheet **200** disposed between the liquid crystal panel **110** and the second polarization plate **162**. About 30 to

60% of the elliptically-polarized light is absorbed and re-polarized by the quantum rod sheet **200**. As a result, the LCD device **100** in accordance with an embodiment of the invention has a bright increase of about 0.9 to 9% with respect to the related art LCD device. In addition, when the same brightness is produced in the LCD device **100** and the related art LCD device, power consumption of the LCD device **100** according to the invention is lower than power consumption of the related art LCD device.

The liquid crystal panel **110** and the backlight unit **120** are modularized with the main frame **130**, the top frame **140** and the bottom frame **150**. The top frame **140** covers edges of a front surface of the liquid crystal panel **110** and side surfaces of the liquid crystal panel **110**. The top frame **140** has an opening such that images from the liquid crystal panel **110** can be displayed through the opening of the top frame **140**. The bottom frame **150** includes a bottom surface and four side surfaces to cover a rear surface of the backlight unit **120** and side surfaces of the backlight unit **120**. The bottom frame **150** covers a rear side of the backlight unit **120**. The main frame **130** has a rectangular frame shape. The main frame **130** covers side surfaces of the liquid crystal panel **110**, the backlight unit **120**, the first and second polarization plates **160** and **162** and the quantum rod sheet **200**, and is combined with the top frame **140** and the bottom frame **150**. The top frame **140** may be referred to as a top case or a case top, and the main frame **130** may be referred to as a guide panel, a main support or a mold frame. The bottom frame **150** may be referred to as a bottom cover or a lower cover.

In embodiments of the invention, since the LCD device **100** includes the quantum rod sheet **200**, where the quantum rods **210** are arranged along a direction, between the liquid crystal panel **110** and the second polarization plate **162**, an elliptically-polarized light by scattering in the liquid crystal layer **330** or the color filter layer **326** is re-polarized by the quantum rod sheet **200** such that brightness or transmissivity of the LCD device **100** according to embodiments of the invention is improved with a range of about 0.9 to 9% with respect to the related art LCD device. In other words, when the same brightness is produced, power consumption of the LCD device according to embodiments of the invention is lower than that of the related art LCD device.

In embodiments of the invention, the quantum rod sheet **200** may be a layer formed of a plurality of quantum rods **210**, and may be referred to as a quantum rod layer. In embodiments of the invention, the quantum rod layer may be a layer per se, or may be a layer formed on a substrate. Examples of such substrates include a glass sheet, a resin sheet, or other sheets.

FIG. 9 is a cross-sectional view of a portion of an LCD device according to an embodiment of the invention. Referring to FIG. 9, an LCD device **400** includes a liquid crystal panel **410**, a first polarization plate **460** at one side of the liquid crystal panel **410**, a second polarization plate **462** at the other side of the liquid crystal panel **410**, a quantum rod sheet **440**, and a backlight unit **420**. The first polarization plate **460** is disposed at one side of the liquid crystal panel **410**, and the second polarization plate **462** is disposed at the other side of the liquid crystal panel **410**. The liquid crystal panel includes first and second substrates **412** and **414** facing each other, a liquid crystal layer **330** therebetween. The backlight unit **420** is disposed under the first polarization plate **460**.

On the first substrate **412**, a gate line and a data line are formed. The gate and data lines cross each other to define a pixel region P. A TFT Tr is formed at a crossing portion of the

gate and data lines and connected to the gate and data lines. A pixel electrode 318, which is disposed in the pixel region P, is connected to the TFT Tr.

On the second substrate 414, a black matrix 423 including an opening and shielding the gate line, the data line and the TFT Tr is formed. In other words, the black matrix 423 has a lattice shape. A color filter layer 426 including red, green and blue color filter patterns 426a, 426b and 426c are formed on the second substrate 414. The red, green and blue color filter patterns 426a, 426b and 426c are disposed in the opening of the black matrix 423 to correspond to the pixel region P. A common electrode 428 is formed on an entire surface over the black matrix 423 and the color filter layer 426.

The quantum rod sheet 440 is disposed between the second substrate 414 and the color filter layer 426. As mentioned above, the quantum rod sheet 440 includes a plurality of quantum rods arranged along a direction. Namely, major axes of the quantum rods are arranged to be substantially parallel to a transmission axis of the second polarization plate 462 and a surface of the second substrate 414. In other words, the major axes of the quantum rods are arranged to be substantially perpendicular to an absorption axis of the second polarization plate 462. In addition to the major axis, each quantum rod has a minor axis, whereby a ratio of the minor axis to the major axis of each quantum rod is about 1:1.1 to 1:30.

FIG. 9 shows the pixel electrode 418 on the first substrate 412 and the common electrode 428 on the second substrate 414 such that a vertical electric field is generated between the pixel and common electrodes 418 and 428. Alternatively, the pixel electrode 418 and the common electrode 428 may be alternately arranged with each other on the first substrate 412 such that a horizontal electric field is generated therebetween. Alternatively, the color filter layer 426 may be formed on the first substrate 412. Such a structure may be referred to as a color filter on TFT (COT) structure.

The present invention requires the quantum rod sheet 440 disposed between the color filter layer 426 and the second polarization sheet 462. Accordingly, there is no limitation of a position of the quantum rod sheet 440 between the color filter layer 426 and the second polarization plate 462. For example, when the color filter layer is formed on the first substrate, the quantum rod sheet may be formed on an inner or outer surface of the second substrate or on the color filter layer. Alternatively, when the color filter layer is formed on the second substrate, the quantum rod sheet may be disposed between the color filter layer and the second substrate or between the second substrate and the second polarization plate 462.

FIG. 10 shows polarization conditions of lights from a backlight unit, a first polarization plate, a liquid crystal panel, a quantum rod sheet and a second polarization plate in an LCD device according to an embodiment of the invention, with use of LCD device of FIG. 9, whereby the non-polarized light is emitted from the backlight unit 420. The non-polarized light is changed to the first linearly-polarized light through the first polarization plate 460. The first linearly-polarized light is parallel to the transmission axis of the first polarization plate 460. The first linearly-polarized light is changed into the elliptically-polarized light as well as the second linearly-polarized light through the color filter layer 426 because of scattering by pigments 427 of the color filter layer 426. The second linearly-polarized light is perpendicular to the first linearly-polarized light. The light amount of the elliptically-polarized light may be about 3 to 10% of the first linearly-polarized light that passes through the first polarization plate 460.

In the related art LCD device shown in FIG. 1, since the second polarization plate 52 has a transmission axis being substantially perpendicular to that of the first polarization plate 50, the elliptically-polarized light can not pass through the second polarization plate 52 such that transmittance and brightness of the LCD device is lowered.

However, in the LCD device 400 according to an embodiment of the invention, the quantum rod sheet 440 absorbs the second linearly-polarized light and emits light that is second linearly-polarized. In addition, a part of the elliptically-polarized light by the pigments in the color filter layer 426, is re-polarized into the second linearly-polarization light by the quantum rod sheet 440 disposed between the color filter layer 426 and the second polarization plate 462. About 30 to 60% of the elliptically-polarized light is absorbed and re-polarized by the quantum rod sheet 440. As a result, the LCD device 400 in accordance with an embodiment of the invention has a bright increase of about 0.9 to 9% with respect to the related art LCD device. In addition, when the same brightness is produced in the LCD device 400 and the related art LCD device, power consumption of the LCD device 400 according to the invention is lower than power consumption of the related art LCD device.

It will be apparent to those skilled in the art that various modifications and variations can be made in the embodiments of the invention without departing from the spirit or scope of the invention. Thus, it is intended that the modifications and variations cover this invention provided they come within the scope of the appended claims and their equivalents.

What is claimed is:

1. A liquid crystal display (LCD) device comprising:

- a first substrate;
 - a second substrate;
 - a liquid crystal layer disposed between the first and second substrates;
 - a color filter on one of the first and second substrates;
 - a first polarization plate under the first substrate;
 - a second polarization plate over the second substrate;
 - a backlight unit under the first polarization plate; and
 - a quantum rod sheet disposed between the color filter and the second polarization plate,
- wherein the quantum rod sheet includes a plurality of quantum rods, each quantum rod including one of a core, or a core and a shell, wherein when each of the quantum rod includes only the core, the core is a rod shape, and when each of the quantum rods includes the core and the shell, the shell is the rod shape,
- wherein the color filter is disposed between the quantum rod sheet and the backlight unit,
- wherein the quantum rod sheet includes the plurality of quantum rods arranged along a first direction,
- wherein the each quantum rod has a minor axis and a major axis, the second polarization plate has a transmission axis, and wherein the major axis, the transmission axis, and the first direction are substantially parallel, and
- wherein the quantum rod sheet emits light that is linearly-polarized along a direction of the major axis of the plurality of quantum rods.

2. The device of claim 1, wherein the shell is formed of at least one of a semiconductor material, an alloy of semiconductor materials, an oxide material and an impurity-doped material.

3. The device of claim 1, wherein the core of the quantum rod includes one or more semiconductor materials or an alloy of the semiconductor materials.

4. The device of claim 3, wherein the semiconductor materials is at least one of CdSe, CdS, CdTe, ZnO, ZnSe, ZnS,

11

ZnTe, HgSe, HgTe, CdZnSe, InP, InN, GaN, InSb, InAsP, InGaAs, GaAs, GaP, GaSb, AlP, AlN, AlAs, AlSb, CdSeTe, ZnCdSe, PbSe, PbTe, PbS, PbSnTe, and Tl₂SnTe₅.

5 5. The device of claim 1, wherein the quantum rod sheet further includes an auxiliary emitting material.

6. The device of claim 5, wherein the auxiliary emitting material includes at least one of a quantum dot, an inorganic fluorescent substance and an organic fluorescent substance.

7. The device of claim 5, wherein a weight ratio of the quantum rod and the auxiliary emitting material may be about 99:1 to 50:50, and a weight % of the quantum rod is larger than or equal to a weight % of the auxiliary emitting material. 10

8. The device of claim 7, wherein the first polarization plate has a transmission axis, and the transmission axis of the first polarization plate and the transmission axis of the second polarization plate are substantially perpendicular. 15

9. The device of claim, 1, wherein the quantum rod sheet is disposed between the color filter and the second substrate.

12

10. The device of claim 1, wherein the quantum rod sheet is disposed between the second substrate and the second polarization sheet.

11. The device of claim 1, further comprising:

a data line, and a gate line that cross the data line;

a thin film transistor connected to the data line and the gate line;

a pixel electrodes connected to the thin film transistor; and a common electrode.

12. The device of claim 9, wherein a pixel electrode and a common electrode is on the first substrate.

13. The device of claim 9, wherein a pixel electrode is on the first substrate, and a common electrode is on the second substrate.

14. The device of claim 1, wherein a ratio of the minor axis to the major axis is about 1:1.1 to 1:30.

* * * * *

专利名称(译)	液晶显示装置		
公开(公告)号	US9104062	公开(公告)日	2015-08-11
申请号	US13/455229	申请日	2012-04-25
[标]申请(专利权)人(译)	KIM KYUNG CHAN CHAE GEE SUNG CHA SOON旭 李敬勋 朴重丸 GEE MOON BAE 赵成HEE JANG KYUNG KOOK JEONG KYUNG SEOK		
申请(专利权)人(译)	KIM , KYUNG-CHAN CHAE , GEE-SUNG CHA , 很快就旭 LEE , 京勋 PARK , JOONG丸 GEE , 月亮BAE CHO , 宋熙 JANG , KYUNG-KOOK 郑某 , KYUNG硕		
当前申请(专利权)人(译)	LG DISPLAY CO. , LTD.		
[标]发明人	KIM KYUNG CHAN CHAE GEE SUNG CHA SOON WOOK LEE KYUNG HOON PARK JOONG PILL GEE MOON BAE CHO SUNG HEE JANG KYUNG KOOK JEONG KYUNG SEOK		
发明人	KIM, KYUNG-CHAN CHAE, GEE-SUNG CHA, SOON-WOOK LEE, KYUNG-HOON PARK, JOONG-PILL GEE, MOON-BAE CHO, SUNG-HEE JANG, KYUNG-KOOK JEONG, KYUNG-SEOK		
IPC分类号	G02F1/1335		
CPC分类号	G02F1/133528 G02F2202/36 G02F2001/133562 G02F2202/046 G02F2202/108		
代理机构(译)	桦木 , STEWART , KOLASCH与桦木 , LLP		
助理审查员(译)	刘 , EDMOND		

优先权	1020110125431 2011-11-28 KR
其他公开文献	US20130135558A1
外部链接	Espacenet USPTO

摘要(译)

液晶显示 (LCD) 装置包括第一基板;第二基板;液晶层设置在第一和第二基板之间;第一和第二基板之一上的滤色器;第一基板下的第一偏振板;第二基板上的第二偏振板;第一偏振板下方的背光单元;和设置在滤色器和第二偏振板之间的量子棒片。

