



US 20140333582A1

(19) **United States**  
(12) **Patent Application Publication**  
**Huo**

(10) **Pub. No.: US 2014/0333582 A1**  
(43) **Pub. Date: Nov. 13, 2014**

(54) **IMBEDDED TOUCH SCREEN LIQUID CRYSTAL DISPLAY DEVICE AND TOUCH DRIVE METHOD THEREOF**

**Publication Classification**

(75) Inventor: **Sitao Huo**, Shanghai (CN)

(51) **Int. Cl.**  
*G02F 1/1343* (2006.01)  
*G06F 3/041* (2006.01)  
*G02F 1/1333* (2006.01)  
(52) **U.S. Cl.**  
CPC ..... *G02F 1/134336* (2013.01); *G02F 1/13338* (2013.01); *G06F 3/0412* (2013.01); *G06F 2203/04103* (2013.01)  
USPC ..... **345/174**; 349/12

(73) Assignee: **Shanghai Tianma Micro-Electronics Co., Ltd.**

(21) Appl. No.: **14/353,005**

(57) **ABSTRACT**

(22) PCT Filed: **Sep. 14, 2012**

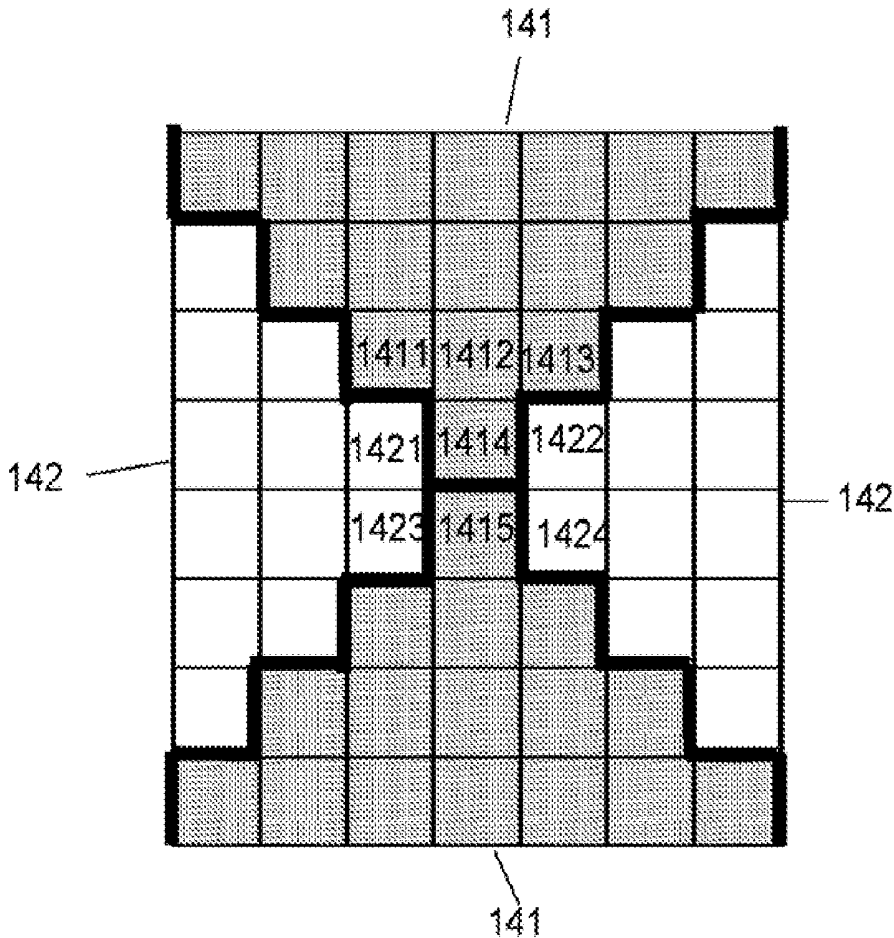
An in-cell touch panel liquid crystal display device is disclosed. The display device includes a first substrate, a second substrate disposed opposite the first substrate, and a liquid crystal layer disposed between the first substrate and the second substrate. The display device also includes a common electrode layer disposed on a side of the second substrate facing the first substrate, where the common electrode layer includes a plurality of first common electrodes and a plurality of second common electrodes both arranged in a matrix. In addition, the first common electrodes and the second common electrodes are configured to detect a touched position on the in-cell touch panel liquid crystal display device.

(86) PCT No.: **PCT/CN2012/081426**

§ 371 (c)(1),  
(2), (4) Date: **Jun. 23, 2014**

(30) **Foreign Application Priority Data**

Nov. 25, 2011 (CN) ..... 201110383654.3



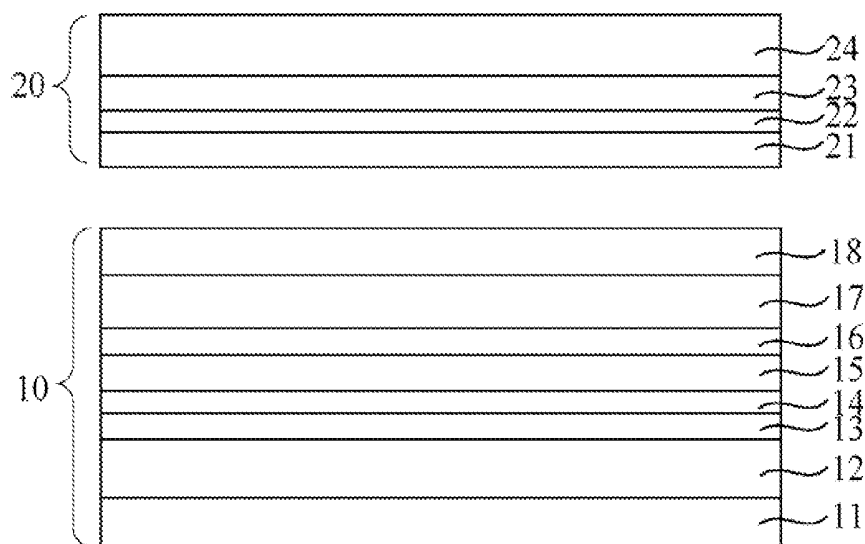


FIG. 1

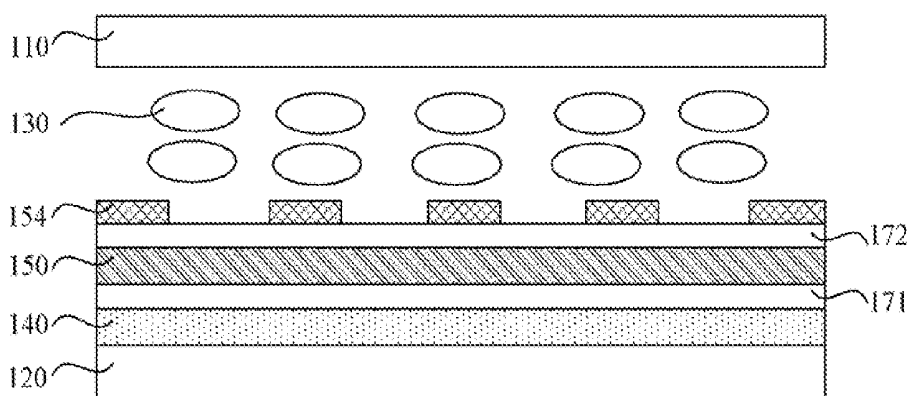


FIG. 2

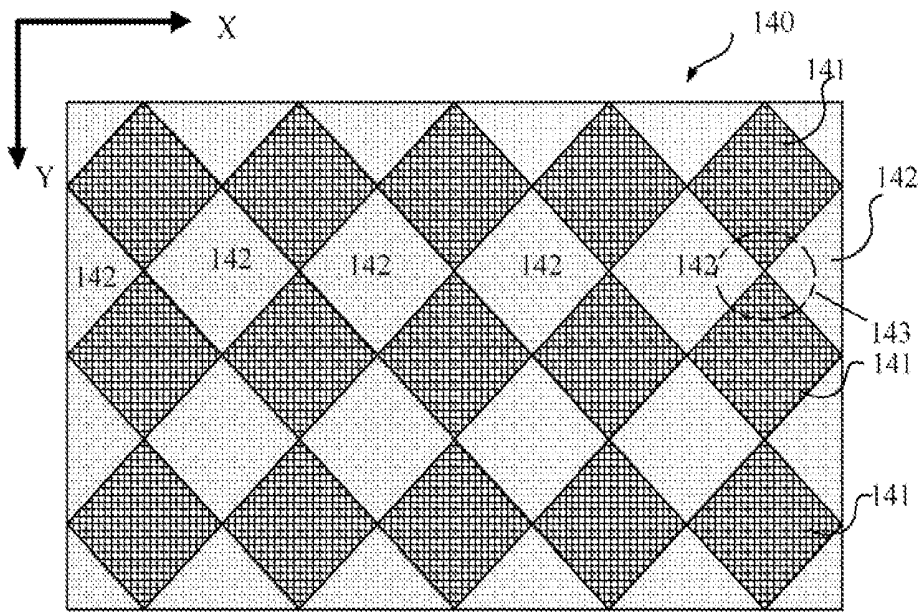


FIG. 3

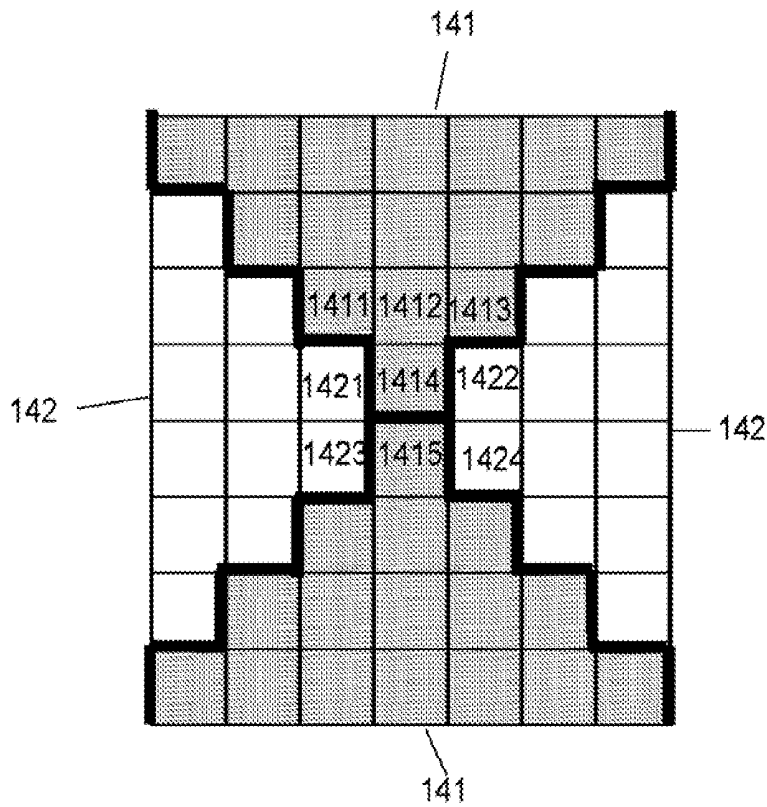


FIG. 4



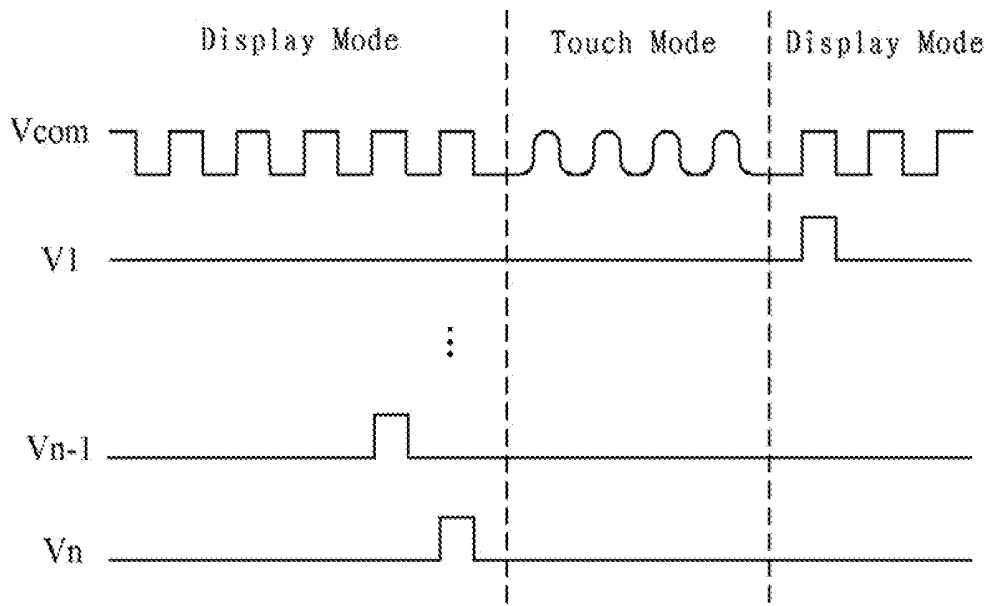


FIG. 6

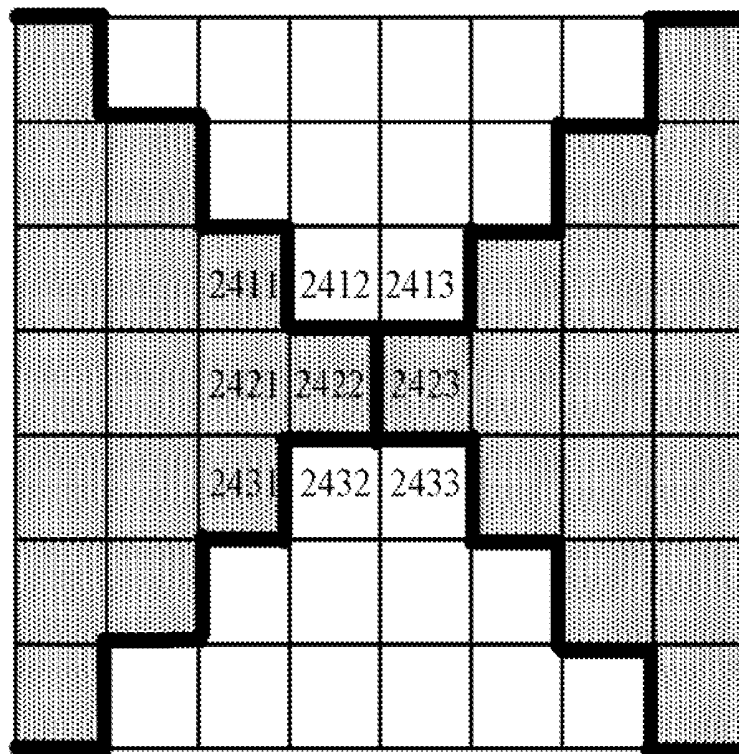


FIG. 7

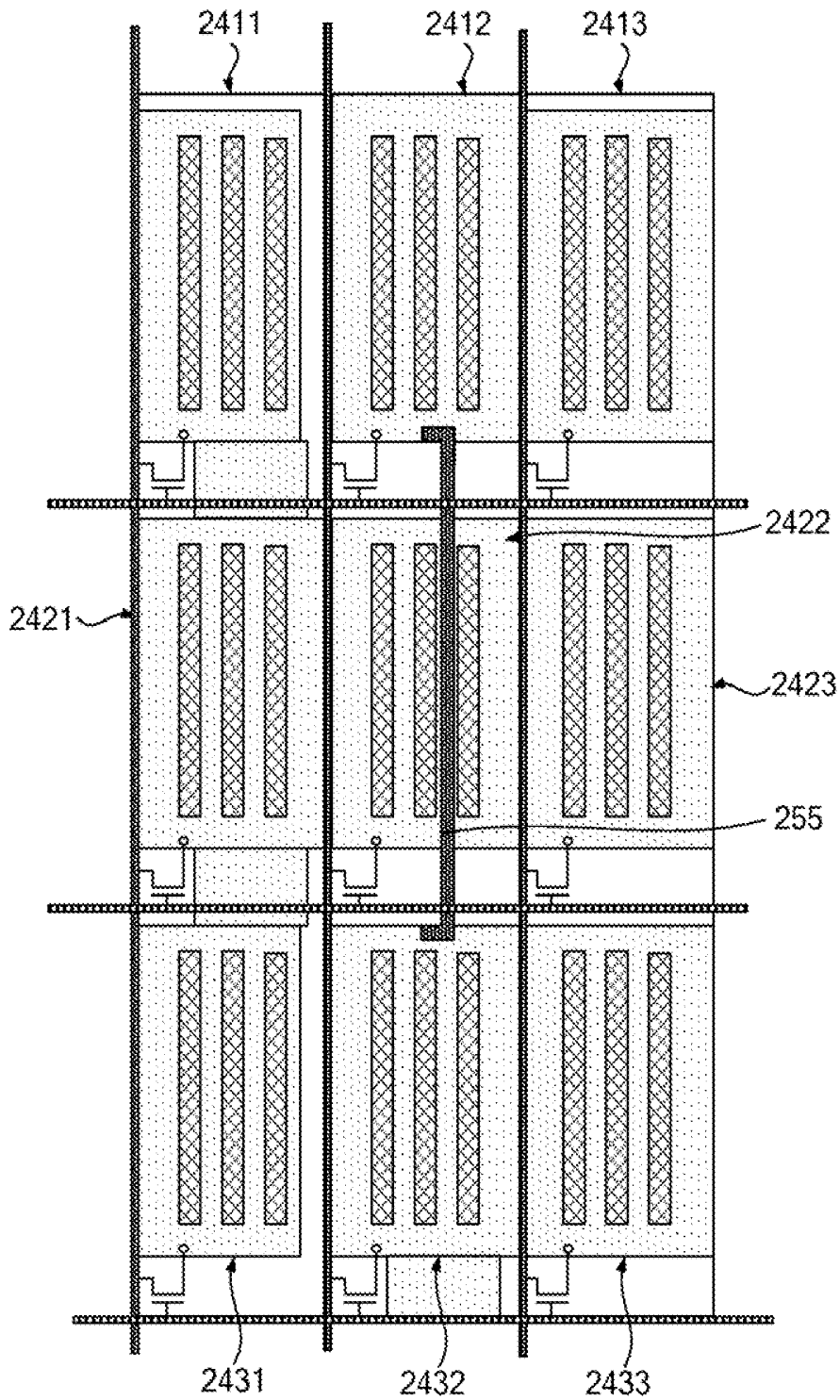


FIG. 8

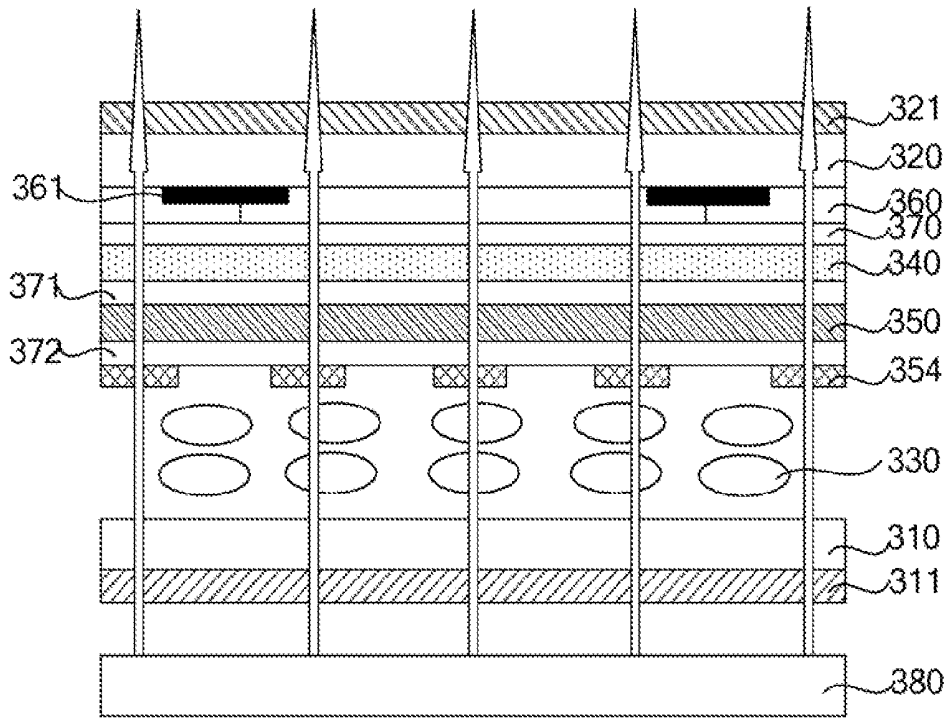


FIG. 9

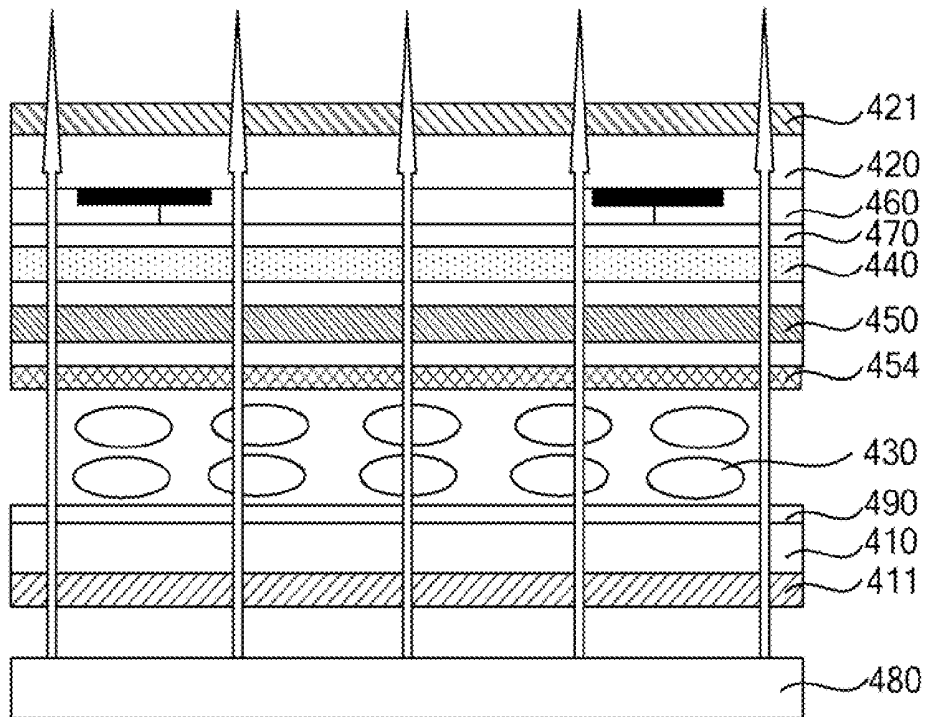


FIG. 10

**IMBEDDED TOUCH SCREEN LIQUID  
CRYSTAL DISPLAY DEVICE AND TOUCH  
DRIVE METHOD THEREOF**

CROSS-REFERENCES TO RELATED  
APPLICATIONS

[0001] This application is a United States national phase application of co-pending international patent application number PCT/CN2012/081426, filed Sep. 14, 2012 and entitled "IMBEDDED TOUCH SCREEN LIQUID CRYSTAL DISPLAY DEVICE AND TOUCH DRIVE METHOD THEREOF", which claims priority to Chinese patent application number 201110383654.3, filed Nov. 25, 2011 and entitled "IMBEDDED TOUCH SCREEN LIQUID CRYSTAL DISPLAY DEVICE AND TOUCH DRIVE METHOD THEREOF", the contents of which are incorporated herein by reference in their entirety.

TECHNICAL FIELD

[0002] The present invention relates to the field of liquid crystal displays, in particular to an in-cell touch panel liquid crystal display device and a touch driving method thereof.

BACKGROUND OF THE INVENTION

[0003] Due to its advantages such as light weight and thinness, a Liquid Crystal Display (LCD) device has gradually developed as one of the fastest growing flat panel displays. The LCD device displays images using liquid crystal material. The transmittance of the liquid crystals varies with the voltage applied to the liquid crystals, in order for displaying with different gray scales. Further, a color filter layer is placed in the direction of emitting lights for the purpose of displaying images or videos in color. Typically, the LCD device has an input portion including an operation interface, as well as a system portion for processing a signal inputted through the input portion, to display the images or videos by a control signal outputted from the system portion through unidirectional communication.

[0004] Recently, a touch panel is integrated with the LCD device to form a touch panel LCD device, so that a user's instruction can be directly inputted through the touch panel disposed on the LCD device, in order for more simple and convenient operations. With the touch panel disposed on the top of the LCD device, when the user touches a displayed icon with his/her finger or a light pen and selects a command to be executed, a touch point (i.e. a touched position) is detected by the touch panel and the LCD device is driven according to the command corresponding to the selected icon, to achieve the specific display. The touch panel can be used without other input means (such as a keyboard or a mouse) and without a keypad for a mobile product, therefore, the LCD device with the touch panel will be more and more widely applied in the display system.

[0005] Currently, the touch panel is simply assembled and used with the LCD device. In addition, interferences other than user touch signals need to be eliminated as much as possible during the operation of the touch panel, therefore, a transparent electrode shielding layer is typically disposed between a touch panel electrode layer for detecting the touched position and a common electrode layer of the LCD device, in order to reduce the affection of noise in the LCD device on the touch panel.

[0006] FIG. 1 is a schematic view of the structure of an existing touch panel LCD device. As shown in FIG. 1, the existing touch panel LCD device includes a LCD panel 10 and a touch panel 20 independent of and located above the LCD panel 10. The LCD panel 10 includes, from bottom to top, a lower polarizer 11, a lower glass substrate 12, a Thin Film Transistor (TFT) layer 13, a liquid crystal layer 14, a common electrode layer 15, a color filter layer 16, an upper glass substrate 17 and an upper polarizer 18. The touch panel 20 includes, from bottom to top, a transparent shielding layer 21, a glass substrate 22, a touch operating layer 23 and a protective layer 24, with the transparent shielding layer 21 being typically made of an Indium Tin Oxide (ITO) layer. In use, the image displayed by the LCD panel 10 is visible to the user through the touch panel 20, and the user is allowed to perform an information inputting operation by means of the touch panel 20, to implement a man-machine interaction process. However, such a way that the touch panel 20 and the LCD panel 10 are manufactured separately and then assembled together will inevitably increase the thickness of the touch panel LCD device, resulting in a complicated display system and a complex manufacturing process, as well as high costs. Furthermore, although the transparent shielding layer 21 can effectively shield the impact on the touch panel 20 by the electric noise of the LCD panel 10, the provision of the Indium Tin Oxide (ITO) layer not only increases the difficulty of the manufacturing process, but also increases the overall thickness of the whole device, thereby negatively affecting the trend of lightening and thinning of the device.

BRIEF SUMMARY OF THE INVENTION

[0007] One inventive aspect is an in-cell touch panel liquid crystal display device. The display device includes a first substrate, a second substrate disposed opposite the first substrate, and a liquid crystal layer disposed between the first substrate and the second substrate. The display device also includes a common electrode layer disposed on a side of the second substrate facing the first substrate, where the common electrode layer includes a plurality of first common electrodes and a plurality of second common electrodes both arranged in a matrix. In addition, the first common electrodes and the second common electrodes are configured to detect a touched position on the in-cell touch panel liquid crystal display device.

[0008] Another inventive aspect is a method of driving an in-cell touch panel liquid crystal display device. The display device includes a first substrate, a second substrate disposed opposite the first substrate, and a liquid crystal layer disposed between the first substrate and the second substrate. The display device also includes a common electrode layer disposed on a side of the second substrate facing the first substrate, where the common electrode layer includes a plurality of first common electrodes and a plurality of second common electrodes both arranged in a matrix. In addition, the first common electrodes and the second common electrodes are configured to detect a touched position on the in-cell touch panel liquid crystal display device. Furthermore, a common electrode layer of the device is time division multiplexed. The method includes providing a display signal to the common electrode layer in a display mode, and providing a touch detecting signal to the common electrode layer in a touch mode.

[0009] Another inventive aspect is a method of driving an in-cell touch panel liquid crystal display device. The display

device includes a first substrate, a second substrate disposed opposite the first substrate, and a liquid crystal layer disposed between the first substrate and the second substrate. The display device also includes a common electrode layer disposed on a side of the second substrate facing the first substrate, where the common electrode layer includes a plurality of first common electrodes and a plurality of second common electrodes both arranged in a matrix. In addition, the first common electrodes and the second common electrodes are configured to detect a touched position on the in-cell touch panel liquid crystal display device. The method includes simultaneously providing a display signal and a touch detecting signal to a common electrode layer of the in-cell touch panel liquid crystal display device, and detecting a touched position on the in-cell touch panel liquid crystal display device while displaying an image.

#### BRIEF DESCRIPTION OF THE DRAWINGS

[0010] FIG. 1 is a schematic diagram of the structure of an existing touch panel liquid crystal display device;

[0011] FIG. 2 is a schematic diagram of the structure of an in-cell touch panel liquid crystal display device according to a first embodiment of the present disclosure;

[0012] FIG. 3 is a schematic diagram of the distribution of a common electrode layer in FIG. 2;

[0013] FIG. 4 is an enlarged view of a portion within a circle in FIG. 3;

[0014] FIG. 5 is a schematic diagram of the structure of pixels shown in FIG. 4;

[0015] FIG. 6 is a timing diagram of a touch driving method of the in-cell touch panel liquid crystal display device according to the first embodiment of the present disclosure;

[0016] FIG. 7 is a schematic diagram showing the arrangement of the common electrodes of the in-cell touch panel liquid crystal display device according to a second embodiment of the present disclosure;

[0017] FIG. 8 is a schematic diagram showing the structure of pixels of the in-cell touch panel liquid crystal display device according to the second embodiment of the present disclosure;

[0018] FIG. 9 is a schematic diagram of the structure of the in-cell touch panel liquid crystal display device according to a third embodiment of the present disclosure; and

[0019] FIG. 10 is a schematic diagram of the structure of the in-cell touch panel liquid crystal display device according to a fourth embodiment of the present disclosure.

#### DETAILED DESCRIPTION OF THE PREFERRED EMBODIMENTS

[0020] For the sake of better understanding on the above objects, features and advantages of the present invention, specific embodiments of the present invention will be described in detail below in conjunction with the accompanying drawings. In the following description, numerous specific details are set forth in order to fully understand the present invention. However, the present invention can be implemented in many ways other than those described herein, and similar deductions can be made by persons skilled in the art without departing from the contents of the present invention. Therefore, the present invention is not limited to the specific embodiments disclosed below.

[0021] As mentioned above in the section of technical background, a touch panel and a liquid crystal display device

are typically manufactured separately and then assembled together in the prior art, which not only increases the thickness of the touch panel liquid crystal display device, but also complicates the device, furthermore, such manufacturing process leads to a more complex technique and higher costs. In view of this, in the present invention, the function of the touch panel is integrated between two substrates of the liquid crystal display device, and a plurality of first common electrodes and a plurality of second common electrodes both arranged in a matrix are employed to detect a touched position (i.e. a touch point) on the in-cell touch panel liquid crystal display device, thus eliminating the adhering of the touch panel onto the liquid crystal display device, so that the manufacturing process is simple, and the thickness of the whole liquid crystal display device is reduced.

[0022] Reference is made to FIGS. 2 to 6, in which FIG. 2 is a schematic diagram of the structure of an in-cell touch panel liquid crystal display device according to a first embodiment; FIG. 3 is a schematic diagram of the distribution of a common electrode layer in FIG. 2; FIG. 4 is an enlarged view of a portion enclosed by a circle in FIG. 3; FIG. 5 is a schematic diagram of the structure of pixels shown in FIG. 4; and FIG. 6 is a timing diagram of a touch driving method of the in-cell touch panel liquid crystal display device according to the first embodiment.

[0023] As shown in FIGS. 2 to 5, an in-cell touch panel liquid crystal display device of the first embodiment includes:

[0024] a first substrate 110 and a second substrate 120 disposed opposite to each other;

[0025] a liquid crystal layer 130 disposed between the first substrate 110 and the second substrate 120; and

[0026] a common electrode layer 140 disposed on a side of the second substrate 120 that faces the first substrate 110;

[0027] where the common electrode layer 140 includes a plurality of first common electrodes 141 and a plurality of second common electrodes 142 both arranged in a matrix, with the first common electrodes 141 and the second common electrodes 142 being configured for detecting a touched position on the in-cell touch panel liquid crystal display device.

[0028] In the first embodiment, the first substrate 110 is provided at the top and the second substrate 120 is provided at the bottom. A user can view the display of the liquid crystal display device from a side of the first substrate 110, and perform a touch operation on a side of the second substrate 120. The common electrode layer 140 is etched to form the plurality of first common electrodes 141 and the plurality of second common electrode 142 both arranged in a matrix. In the first embodiment, each of the first common electrodes 141 and the second common electrodes 142 has a rhombic shape, but may have another shape as desired.

[0029] In the first embodiment of the present invention, the plurality of first common electrodes 141 are arranged in rows in a second direction (e.g., a direction Y) with adjacent two first common electrodes in each row being electrically connected, so as to function as drive lines, and the plurality of second common electrodes 142 are arranged in rows in a first direction (e.g., a direction X) with adjacent two first common electrodes in each row being electrically connected, so as to function as sense lines, in order to detect the touched position (i.e. the touch point) on the in-cell touch panel liquid crystal display device. The touch layer is integrated within the liquid crystal display device, thus eliminating the adhering of the

touch panel onto the liquid crystal display device, so that the manufacturing process is simple, and the thickness of the device is reduced.

[0030] It can be understood that the above arrangement of the first common electrodes **141** and the second common electrodes **142** is preferable in the present invention, but not intended to limit the present invention, and the specific amount of pixel units, the common electrodes of which form one touch region, may depend on actual touch requirements, for example, depend on the general user's finger size. That is, any manner of dividing the common electrode layer into two intersecting parts for detecting the touch point is within the scope of the present invention.

[0031] Specifically, adjacent two first common electrodes **141** in each row are directly electrically connected together with each other in the direction Y, while the plurality of second common electrodes **142** are not directly connected to each other. FIGS. **4** and **5** schematically show nine pixel units **1411**, **1412**, **1413**, **1414**, **1415**, **1421**, **1422**, **1423**, and **1424**, it may be understood that each of the first common electrodes and the second common electrodes is formed by common electrodes of a plurality of pixel units, for example, the pixel units **1411**, **1412**, **1413**, and **1414** belong to one first common electrode **141**, while the pixel unit **1415** belongs to another first common electrode **141** connected with said one first common electrode **141**; likewise, the pixel units **1421** and **1423** belong to one second common electrode **142**, while the pixel units **1422** and **1424** belong to another second common electrode **142** connected with said one second common electrode **142**.

[0032] Next, the structure within the circle **143** in FIG. **3** will be described in more detail. As shown in FIGS. **4** and **5**, two adjacent first common electrodes **141** are directly connected through the common electrodes of the adjacent pixel units **1414**, **1415**; while two adjacent second common electrodes **142** are electrically connected by a metal bridge **155** connecting the common electrodes of the adjacent pixel units respectively from these two adjacent second common electrodes **142**. The plurality of second common electrodes **142** may be electrically connected in the direction X by the metal bridges. The metal bridge **155** may be implemented in various ways, such as by etching a separate layer of metal to form the metal bridge. However, in the first embodiment, the existing metal layer is utilized to form the metal bridge **155** to simplify the manufacturing process.

[0033] In the first embodiment of the present invention, the in-cell touch panel liquid crystal display device may be a liquid crystal display device of an In-Plane Switching (IPS) or Fringe Field Switching (FFS) mode, where the IPS/FFS mode is a liquid driving mode capable of broadening the visual angle, and the pixel electrodes in an array substrate in the IPS/FFS mode are strip-shaped to form a horizontal electric field.

[0034] In the first embodiment, the in-cell touch panel liquid crystal display device is an IPS-type liquid crystal display device, and further includes a TFT layer **150** disposed on the second substrate **120**, and the TFT layer **150** includes scan lines **151** and data lines **152** intersecting with the scan lines **151**, with TFTs **153** being formed in pixel regions defined by the scan lines **151** and the data lines **152**. The TFT **153** includes: a gate electrode electrically connected to the scan line **151**, as well as a gate insulating layer, a semiconductor layer, a source electrode and a drain electrode which are disposed on the gate electrode. A pixel electrode **154** disposed

on the second substrate **120** is electrically connected with the drain electrode of the TFT **153** through a through hole (not shown), and the source electrode of the TFT **153** is electrically connected with the data line **152**. The scan line **151** and the gate electrode, which are typically formed in the same process step, are in the same layer and can be formed integrally; in addition, the metal forming the source electrode of the TFT and the metal forming the drain electrode, which are typically formed in the same process step, are in the same layer and collectively referred to as a source/drain electrode metal layer. In general, the source/drain electrode metal layer and the gate electrode metal layer are inevitably formed in the process of manufacturing the TFT layer **150**, thus in the first embodiment, the connection of two second common electrodes in the direction X is implemented by the metal bridge which is made by the metal located in the same layer with the data line **152**, because the data line **152** is also provided in the direction X. The in-cell touch panel liquid crystal display device further includes a first insulating layer **171** disposed between the common electrode layer **140** and the TFT layer **150**, and a second insulating layer **172** disposed between the common electrode layer **140** and the pixel electrode **154**.

[0035] In the first embodiment, preferably, the outer side of the first substrate **110** is further provided with a shielding layer. To reduce the impact on the in-cell touch panel liquid crystal display device by any external noise, the shielding layer is typically disposed at the outer side of the in-cell touch panel liquid crystal display device. In the first embodiment, the common electrode layer **140** is arranged on a side of the second substrate **120** and is configured to shield the noise from the external of the second substrate **120**, meanwhile, it is also required to arranged a shielding layer at the outer side of the first substrate **110** to shield the noise from the external of the first substrate **110**.

[0036] Further, the in-cell touch panel liquid crystal display device further includes a display signal generating unit and a touch detecting signal generating unit (not shown), where the display signal generating unit is configured for providing a display signal to the common electrode layer **140** (including the first common electrodes **141** and the second common electrodes **142**), and the touch detecting signal generating unit is configured for providing a touch detecting signal to the common electrode layers **140**. The touch detecting signal includes an excitation signal and a detection signal. In the first embodiment, the touch detecting signal generating unit is configured for providing the excitation signal to the first common electrodes **141** serving as driving electrodes, and providing the detection signal to the second common electrodes **142** serving as sensing electrodes. Alternatively, in other specific embodiments of the present invention, it is possible that the touch detecting signal generating unit provides the excitation signal to the second common electrode, and provides the detection signal to the first common electrode.

[0037] The first embodiment also provides a touch driving method for the in-cell touch panel liquid crystal display device described as above, and the common electrode layer **140** is used in a time division multiplexing manner in the method. The in-cell touch panel liquid crystal display device has two operating modes, i.e. a display mode and a touch mode. In the display mode, the display signal is provided to the common electrode layer **140**, so that the in-cell touch panel liquid crystal display device operates for displaying; while in the touch mode, the touch detecting signal is pro-

vided to the common electrode layer **140**, so that the in-cell touch panel liquid crystal display device operates for touch detecting.

[0038] As shown in FIG. 6, at the beginning of each frame, the in-cell touch panel liquid crystal display device firstly operates in the display mode, where the display signal includes a pixel selecting signal and a data signal, the display signal generating unit provides a common voltage  $V_{com}$  to the first common electrodes **141** and the second common electrodes **142** and provides the pixel selecting signal in order to apply scanning voltages  $V_1 \dots V_{n-1}, V_n$ , which are higher than the turning-on threshold voltage of the TFTs, to the scan lines **151** line by line, so that the TFTs are turned on line by line due to the scanning voltages; further, the display signal generating unit provides a data signal to the data lines **152**, to send the data signal to each of the TFTs through the data lines **152**. As a result, an electric field in parallel with the first substrate **110** and the second substrate **120** is formed between the strip-shaped pixel electrodes **154** and the common electrode layer **140** and causes liquid crystal molecules to deflect along the direction of the electric field, so that the liquid crystal display array operates to display an image, and each of pixel units operates for displaying properly.

[0039] When the in-cell touch panel liquid crystal display device subsequently operates in the touch mode, a touch can be detected by controlling the first common electrodes **141** and the second electrodes **142**. For example, in a mutual capacitance mode, the first common electrodes **141** serve as driving electrodes and the second common electrodes **142** serve as sensing electrodes, the excitation signal is provided to the first common electrodes **141** and the detection signal is provided to the second common electrodes **142**, so that a mutual capacitance is present at an overlapping position between the first common electrode **141** and the second common electrode **142**. If the in-cell touch panel liquid crystal display device is touched by a finger, partial current will flow to the finger, which is equivalent to that the mutual capacitance changes, so that the detection signal on the second common electrode **142** serving as the sensing electrode changes, thereby detecting whether the finger touches the in-cell touch panel liquid crystal display device. Alternatively, it is possible that the second common electrodes **142** serve as driving electrodes and the first common electrodes **141** serve as sensing electrodes, and the excitation signal is provided to the second common electrodes **142** and the detection signal is provided to the first common electrodes **141**, to likewise achieve the object of the present invention.

[0040] When the frame is ended and the next frame is started, the in-cell touch panel liquid crystal display device operates in the display mode once again, and the above-mentioned alternating process is repeated. Of course, the foregoing description is merely a specific embodiment of the present invention, depending on the specific timing distribution within the time period in each frame in the touch driving method of the present invention, and thus the present invention is not limited to the above-mentioned manner in which the display mode is followed by the touch mode. Alternatively, it is possible that the touch mode is followed by the display mode in each frame. Other control solutions employed in the above touch driving method may also be deduced reasonably by those skilled in the art according to the specific timing.

[0041] It can be known from the above description that, in the touch driving method in which the common electrode

layer **140** is used in the time division multiplexing manner, the displaying time period and the touch detecting time period of the in-cell touch panel liquid crystal display device are separated from each other, so that the image displaying and the touch sensing do not impact on each other, thereby improving the accuracy of the touch sensing and the imaging quality of the in-cell touch panel liquid crystal display device.

[0042] Alternatively, the in-cell touch panel liquid crystal display device may be provided with another touch driving method, in which the display signal and the touch detecting signal are simultaneously provided to the common electrode layer **140** to detect the touched position on the in-cell touch panel liquid crystal display device while in the displaying of the pixels. That is, the display signal generating unit provides the display signal to the common electrode layer **140**, and simultaneously, the touch detecting signal generating unit provides the touch detecting signal (including the excitation signal and the detection signal) to the common electrode layer **140**, so that the in-cell touch panel liquid crystal display device simultaneously operates for touching and displaying. Typically, the touch detecting signal is a high frequency signal (having a relatively short cycle), and the display signal is a low frequency signal (having a relatively long cycle). As long as the equivalent DC component of the excitation signal is consistent with the common voltage  $V_{com}$ , the pixel units are unresponsive due to the limited time, thus, it can be ensured that the touch detecting function is realized without compromising the image displaying of the liquid crystal display array, and the imaging quality can be guaranteed.

[0043] As such, in the in-cell touch panel liquid crystal display device provided by the first embodiment of the present invention, the function of a touch panel is integrated between those two substrates of the liquid crystal display device, and the first common electrodes and the second common electrodes intersecting with each other are employed to detect the touched position on the in-cell touch panel liquid crystal display device, thereby eliminating the adhering of the touch panel onto the liquid crystal panel of the liquid crystal display device, so that the manufacturing process is simple, and the thickness of the liquid crystal display device is reduced.

[0044] A second embodiment is different from the first embodiment in that, adjacent two first common electrodes in each row are connected in a first direction (i.e. a direction X) by directly connected common electrodes of adjacent pixel units, and adjacent two second common electrodes in each row are connected in a second direction (i.e. a direction Y) by metal bridges each connecting common electrodes of two vertically adjacent pixel units.

[0045] Specifically, the common electrode layer is also etched to form a plurality of first common electrodes and a plurality of second common electrodes both arranged in a matrix. FIGS. 7 and 8 merely show nine pixel units **2411**, **2412**, **2413**, **2421**, **2422**, **2423**, **2431**, **2432**, and **2433**, where the pixel units **2411**, **2421**, **2422**, and **2431** are included in one first common electrode, and the pixel unit **2423** is included in another first common electrode; likewise, the pixel units **2412** and **2413** are included in one second common electrode, and the pixel unit **2432** and **2433** are included in another second common electrode.

[0046] The adjacent two first common electrodes in each row are connected in the direction X by directly connected common electrodes of adjacent pixel units, and the adjacent two second common electrodes in each row are connected in

the direction Y by the metal bridges **255** each connecting the common electrodes of two vertically adjacent pixel units. Similarly, the metal bridge **255** may be implemented in various ways, such as by etching a separate layer of metal to form the metal bridge. However, in the second embodiment, the existing metal layer is utilized. Specifically, to provide the metal bridges in the direction Y, a metal layer (e.g., a gate electrode metal layer) in the same layer with the scan lines is used, because the scan lines are also provided in the direction Y.

[0047] The operating manner of the in-cell touch panel liquid crystal display device in the second embodiment is the same as that in the first embodiment, and therefore is not described in detail here, but should be understood by those skilled in the art.

[0048] In the first embodiment of the present invention, two adjacent first common electrodes are directly connected in the second direction (e.g. a direction Y) through the common electrodes of adjacent pixel units respectively from these two adjacent first common electrodes; while two adjacent second common electrodes are electrically connected by the metal bridge connecting the common electrodes of the horizontally adjacent pixel units respectively from these two adjacent second common electrodes. In the second embodiment of the present invention, two adjacent first common electrodes are directly connected in the first direction (e.g. a direction X) through the common electrodes of two adjacent pixel units respectively from these two adjacent first common electrodes; while two adjacent second common electrodes are electrically connected by the metal bridge connecting the common electrodes of the vertically adjacent pixel units respectively from these two adjacent second common electrodes. However, it should be noted that in other embodiments of the present invention, adjacent first common electrodes may be connected by the metal bridge connecting the common electrodes of the adjacent pixel units respectively from these adjacent first common electrodes, while adjacent second common electrodes may also be connected by the metal bridge connecting the common electrodes of the adjacent pixel units respectively from these adjacent second common electrodes. For example, the first common electrodes are disposed in the same direction with the scan lines, the second common electrodes are disposed in the same direction with the data lines, the first common electrodes are electrically connected by the metal bridge located in the same layer with the scan lines, and the second common electrodes are electrically connected by the metal bridge located in the same layer with the data lines.

[0049] In the first and second embodiments of the present invention, a user can view the display of the liquid crystal display device from a side of the first substrate, and perform a touch operation on a side of the second substrate. However, in a third embodiment, the liquid crystal display device can be viewed and touched simultaneously from a side of the second substrate, that is, the common electrode layer, the TFT layer and the pixel electrodes are sequentially disposed at the inner side of the second substrate, and the common electrode layer may also have an effect of shielding the interference from the external signal. The shielding effect of the common electrode layer is like that of the transparent shielding layer employed in the traditional touch panel liquid crystal display device, to reduce the interference caused by the external electric field to the display of the liquid crystal display device, so that an

additional specialized transparent shielding layer is unnecessary, thus reducing the difficulty of the manufacturing process and the manufacturing costs.

[0050] Specifically as shown in FIG. 9, the in-cell touch panel liquid crystal display device of the third embodiment includes:

[0051] a first substrate **310** and a second substrate **320** disposed opposite to each other;

[0052] a liquid crystal layer **330** disposed between the first substrate **310** and the second substrate **320**; and

[0053] a common electrode layer **340** disposed on a side of the second substrate **320** that faces the first substrate **310**;

[0054] where the common electrode layer **340** includes a plurality of first common electrodes and a plurality of second common electrodes both arranged in a matrix, with the first common electrodes and the second common electrodes being configured for detecting a touched position on the in-cell touch panel liquid crystal display device.

[0055] Furthermore, the in-cell touch panel liquid crystal display device further includes a TFT layer **350** which is disposed on a side of the second substrate **320** that faces the first substrate **310**, the TFT layer **350** includes scan lines and data lines intersecting with the scan lines, and TFTs are formed in pixel regions defined by the scan lines and the data lines. The TFT includes: a gate electrode electrically connected to the scan line, as well as a gate insulating layer, a semiconductor layer and a source/drain electrode metal layer which are sequentially disposed on the gate electrode, with the source electrode of the TFT being electrically connected with the data line.

[0056] Optionally, the TFT layer further includes an ohmic contact layer formed between the semiconductor layer and the source/drain electrode metal layer. The ohmic contact layer is made of N+ doped amorphous silicon for example, to form an ohmic contact. For the sake of concision, the gate insulating layer, the semiconductor layer and the ohmic contact layer are not indicated in the figures, but should be understood by those skilled in the art.

[0057] The in-cell touch panel liquid crystal display device of the third embodiment is a liquid crystal display device of an IPS mode or an FFS mode. Specifically, the in-cell touch panel liquid crystal display device further includes a color filter layer **360**, a passivation layer **370**, an upper polarizer **321**, a lower polarizer **311** and a backlight **380**. The color filter layer **360**, which is disposed between the second substrate **320** and the common electrode layer **340**, is configured for displaying in color; the passivation layer **370** is disposed between the color filter layer **360** and the common electrode layer **340**; the upper polarizer **321** is disposed on a side of the second substrate **320** away from the first substrate **310**; the lower polarizer **311** is disposed on a side of the first substrate **310** away from the second substrate **320**; and the backlight **380** is disposed at a side of the lower polarizer **311**. In the third embodiment, the color filter layer **360**, the common electrode layer **340**, and the TFT layer **350** are sequentially disposed on the same substrate, and the common electrode layer **340** has an effect of shielding the interference from the external signal, that is, the shielding effect of the common electrode layer **340** is like that of the transparent shield layer employed in the traditional touch panel liquid crystal display device, to reduce the noise interference, so that an additional specialized transparent shield layer is unnecessary, thus reducing the difficulty of the manufacturing process and the manufacturing costs.

[0058] As shown in FIG. 9, the in-cell touch panel liquid crystal display device further includes a first insulating layer 371 and a second insulating layer 372, where the first insulating layer 371 is disposed between the common electrode layer 340 and the TFT layer 350, and the second insulating layer 372 is disposed between the TFT layer 350 and the pixel electrodes 354, in order for an isolation effect. Further, to facilitate the production, the color filter layer 360 is formed across the entire second substrate 320, but a black matrix layer 361 is disposed on the portion of the second substrate 320 to be shielded. Alternatively, in other specific embodiments of the present invention, the color filter layer 360 and the black matrix layer 361 may be disposed alternately, rather than forming the color filter layer 360 across the entire second substrate 320.

[0059] In other embodiments, the color filter layer may also be formed on the outer side of the second substrate 320, which should fall into the scope of the present invention.

[0060] The distribution manner of the first common electrodes and the second common electrodes in the third embodiment is similar with that in the common electrode layer structure in the first embodiment or the second embodiment, and the touch driving method in the third embodiment is also similar with that in the first embodiment or the second embodiment, and will not be discussed in detail here.

[0061] Because the in-cell touch panel liquid crystal display device provided in the third embodiment may be viewed and touched simultaneously at a side of the second substrate 320, it is more convenient in use, and the backlight can be installed on a side of the first substrate 310, to provide a more uniform and stable light source, thereby enabling a better display effect.

[0062] In the third embodiment, because the backlight is installed on the side of the first substrate 310, a metal frame for the backlight can shield the signal noise from the outer side of the first substrate 310; meanwhile, because the in-cell touch panel liquid crystal display device can be viewed and touched by a user from a side of the second substrate 320, the common electrode layer 340 disposed above the pixel electrodes 354 and the TFT layer 350 and below a side of the second substrate 320 has an effect of shielding the signal noise from the outer side of the second substrate 320, to reduce the noise inference. Therefore, in the in-cell touch panel liquid crystal display device provided by the third embodiment, an additional specialized transparent shielding layer is unnecessary, thus reducing the difficulty of the manufacturing process and the manufacturing costs.

[0063] The present invention will be described in a fourth embodiment by taking an in-cell touch panel liquid crystal display device of a TN/AV mode, for example. As shown in FIG. 10, the in-cell touch panel liquid crystal display device includes:

[0064] a first substrate 410 and a second substrate 420 disposed opposite to each other;

[0065] a liquid crystal layer 430 disposed between the first substrate 410 and the second substrate 420; and

[0066] a common electrode layer 440 disposed on a side of the second substrate 420 that faces the first substrate 410, where the common electrode layer 440 includes a plurality of first common electrodes and a plurality of second common electrodes both arranged in a matrix, with the first common electrodes and the second common electrodes being configured for detecting a touched position on the in-cell touch panel liquid crystal display device;

[0067] a TFT layer 450 disposed on the inner side of the second substrate 420;

[0068] a color filter layer 460 disposed between the second substrate 420 and the common electrode layer 440;

[0069] a passivation layer 470 disposed between the color filter layer 460 and the common electrode layer 440;

[0070] a lower polarizer 411 disposed on a side of the first substrate 410 away from the second substrate 420;

[0071] an upper polarizer 421 disposed on a side of the second substrate 420 away from the first substrate 410;

[0072] a backlight 480 disposed at a side of the lower polarizer 411; and

[0073] a second common electrode layer 490 disposed on a side of the first substrate 410 that faces the second substrate 420.

[0074] Compared with the third embodiment, a vertical electric field is formed in the in-cell touch panel liquid crystal display device of the fourth embodiment, thus the second common electrode layer 490 need be formed on the first substrate 410. The distribution manner of the first common electrodes and the second common electrodes is the same with that in the common electrode layer structure in the first embodiment or second embodiment, in addition, the touch driving method of the in-cell touch panel liquid crystal display device is also similar with that in the first embodiment and the second embodiment.

[0075] As such, the in-cell touch panel liquid crystal display device of the present invention is not only applicable to the IPS/FFS mode, but also to the TN/AV mode or other modes. In the present invention, the function of the touch panel is integrated between two substrates of the liquid crystal display device, the plurality of first common electrodes arranged and connected together in the first direction serve as drive lines, and the plurality of second common electrodes arranged and connected together in the second direction serve as sense lines, to detect the touched position on the in-cell touch panel liquid crystal display device, thereby eliminating the adhering of the touch panel to the liquid crystal panel of the liquid crystal display device, so that the manufacturing process is simple, the thickness of the liquid crystal display device is reduced, and the manufacturing costs are reduced.

[0076] It is noted that the above-mentioned in-cell touch panel liquid crystal display device is introduced merely as the preferred embodiment, and the amount of the layers in the in-cell touch panel liquid crystal display device can be increased or reduced by those skilled in the art according to actual production requirements, and types, materials and thicknesses of each layer can also be selected as needed, and will not be discussed in detail here.

[0077] In addition, in this specification, various embodiments are described by way of progressive manner, and each of the embodiments focuses on the difference with the other embodiments in terms of the illustration, and the same or similar parts between the various embodiments may refer to each other. Furthermore, the accompanying drawings are shown in a very simplified form and uses imprecise ratio, only for the purpose of being convenient and clear to the auxiliary illustration of the various embodiments of the present invention.

[0078] The above disclosed embodiments are described for implementing or using the present invention by those skilled in the art. It will be apparent that various modifications can be made to these embodiments by those skilled in the art, and the general principles defined herein can be implemented in other

embodiments without departing from the spirit or the scope of the invention. Therefore, the present invention is not limited by the embodiments shown herein, rather conforms to the broadest range in accordance with the principles and novelty characteristics disclosed.

What is claimed is:

1. An in-cell touch panel liquid crystal display device, comprising:

a first substrate;

a second substrate disposed opposite the first substrate;

a liquid crystal layer disposed between the first substrate and the second substrate; and

a common electrode layer disposed on a side of the second substrate facing the first substrate,

wherein the common electrode layer comprises a plurality of first common electrodes and a plurality of second common electrodes both arranged in a matrix, wherein the first common electrodes and the second common electrodes are configured to detect a touched position on the in-cell touch panel liquid crystal display device.

2. The device of claim 1, wherein the first common electrodes are arranged in a first direction and electrically connected, and the second common electrodes are arranged in a second direction and electrically connected.

3. The device of claim 2, wherein the first common electrodes are directly connected, and the common electrodes are electrically connected by metal bridges located in a different layer from the common electrode layer.

4. The device of claim 3, further comprising a TFT layer which comprises:

a plurality of scan lines disposed on a side of the second substrate that faces the first substrate;

data lines intersecting with the scan lines;

TFTs formed in pixel regions defined by the scan lines and the data lines, wherein the TFT comprises:

a gate electrode electrically connected to one of the scan lines,

a gate insulating layer,

a semiconductor layer,

source and drain electrodes disposed on the gate electrode, wherein the source electrode of the TFT is electrically connected to the data line,

wherein a pixel electrode disposed on a side of the second substrate which faces the first substrate is electrically connected to the drain electrode of the TFT.

5. The device of claim 4, wherein the first common electrodes are disposed in the same direction with the scan lines, the second common electrodes are disposed in the same direction with the data lines, and the second common electrodes are electrically connected by the metal bridges located in the same layer with the scan drives.

6. The device of claim 4, wherein the first common electrodes are disposed in the same direction with the data lines, the second common electrodes are disposed in the same direction with the scan lines, and the second common electrodes are electrically connected by the metal bridges located in the same layer with the data drives.

7. The device of claim 2, further comprising a TFT layer which comprises:

scan lines disposed on a side of the second substrate which faces the first substrate, and data lines intersecting the scan lines;

TFTs formed in pixel regions defined by the scan lines and the data lines, where the TFT comprises:

a gate electrode electrically connected to the scan line, a gate insulating layer,

a semiconductor layer, and

source and drain electrodes disposed on the gate electrode, wherein the source electrode is electrically connected to the data line, and wherein a pixel electrode disposed on a side of the second substrate that faces the first substrate is electrically connected to the drain electrode of the TFT,

wherein the first common electrodes are disposed in the same direction with the scan lines, the second common electrodes are disposed in the same direction with the data lines, the first common electrodes are electrically connected by the metal bridges located in the same layer with the scan drives, and the second common electrodes are electrically connected by the metal bridges located in the same layer with the data drives.

8. The device of claim 1, further comprising a display signal generating unit and a touch detecting signal generating unit, wherein the display signal generating unit is configured to provide a display signal to the first common electrodes and the second common electrodes, and the touch detecting signal generating unit is configured to provide a touch detecting signal to the first common electrodes and the second common electrodes.

9. The device of claim 8, wherein the display signal generating unit is configured to provide the display signal to the common electrode layer in the display mode, and the touch detecting signal generating unit is configured to provide the touch detecting signal to the common electrode layer in the touch mode.

10. The device of claim 9, wherein the touch detecting signal includes an excitation signal and a detection signal.

11. The device of claim 10, wherein in the touch mode, the touch detecting signal generating unit is configured to provide the excitation signal to the first common electrodes, and to provide the detection signal to the second common electrodes.

12. The device of claim 10, wherein in the touch mode, the touch detecting signal generating unit is configured to provide the excitation signal to the second common electrodes, and to provide the detection signal to the first common electrodes.

13. The device of claim 8, wherein the touch detecting signal generating unit is configured to provide the touch detecting signal to the common electrode layer simultaneously while the display signal generating unit provides the display signal to the common electrode layer.

14. The device of claim 13, wherein the touch detecting signal generating unit is configured to provide the excitation signal to the first common electrodes, and to provide the detection signal to the second common electrodes.

15. The device of claim 13, wherein the touch detecting signal generating unit is configured to provide the excitation signal to the second common electrodes, and to provide the detection signal to the first common electrodes.

16. The device of claim 13, wherein an equivalent DC component of the touch detecting signal is consistent with the display signal.

17. The device of claim 1, further comprising a color filter layer disposed between the second substrate and the common electrode layer.

18. A method of driving an in-cell touch panel liquid crystal display device, the display device comprising: a first sub-

strate, a second substrate disposed opposite the first substrate, a liquid crystal layer disposed between the first substrate and the second substrate, and a common electrode layer disposed on a side of the second substrate facing the first substrate, wherein the common electrode layer comprises a plurality of first common electrodes and a plurality of second common electrodes both arranged in a matrix, wherein the first common electrodes and the second common electrodes are configured to detect a touched position on the in-cell touch panel liquid crystal display device, wherein a common electrode layer of the device is time division multiplexed, wherein the method comprises:

providing a display signal to the common electrode layer in a display mode; and

providing a touch detecting signal to the common electrode layer in a touch mode.

**19.** The method of claim **18**, wherein the touch detecting signal comprises an excitation signal and a detection signal.

**20.** The method of claim **19**, wherein in the touch mode, the excitation signal is provided to the first common electrodes and the detection signal is provided to the second common electrodes.

**21.** The method of claim **19**, wherein in the touch mode, the excitation signal is provided to the second common electrodes and the detection signal is provided to the first common electrodes.

**22.** A method of driving an in-cell touch panel liquid crystal display device, the display device comprising: a first substrate, a second substrate disposed opposite the first substrate, a liquid crystal layer disposed between the first substrate and the second substrate, and a common electrode layer disposed on a side of the second substrate facing the first substrate, wherein the common electrode layer comprises a plurality of first common electrodes and a plurality of second common electrodes both arranged in a matrix, wherein the first common electrodes and the second common electrodes are configured to detect a touched position on the in-cell touch panel liquid crystal display device, wherein the method comprises:

simultaneously providing a display signal and a touch detecting signal to a common electrode layer of the

in-cell touch panel liquid crystal display device; and

detecting a touched position on the in-cell touch panel liquid crystal display device while displaying an image.

**23.** The method of claim **22**, wherein the touch detecting signal comprises an excitation signal and a detection signal.

**24.** The method of claim **23**, wherein the detection signal is provided to the second common electrodes while the excitation signal is provided to the first common electrodes.

**25.** The method of claim **23**, wherein the detection signal is provided to the first common electrodes while the excitation signal is provided to the second common electrodes.

\* \* \* \* \*

专利名称(译)	嵌入式触摸屏液晶显示装置及其触摸驱动方法		
公开(公告)号	<a href="#">US20140333582A1</a>	公开(公告)日	2014-11-13
申请号	US14/353005	申请日	2012-09-14
[标]申请(专利权)人(译)	霍私逃		
申请(专利权)人(译)	霍, 私逃		
当前申请(专利权)人(译)	上海天马微电子有限公司.		
[标]发明人	HUO SITAO		
发明人	HUO, SITAO		
IPC分类号	G02F1/1343 G06F3/041 G02F1/1333		
CPC分类号	G02F1/134336 G02F1/13338 G06F3/0412 G06F2203/04103 G06F3/0443 G06F3/0446 G02F1/136286 G06F3/044 G06F2203/04111		
优先权	201110383654.3 2011-11-25 CN		
其他公开文献	US9442330		
外部链接	<a href="#">Espacenet</a> <a href="#">USPTO</a>		

摘要(译)

公开了一种内嵌式触摸屏液晶显示装置。该显示装置包括第一基板，与第一基板相对设置的第二基板，以及设置在第一基板和第二基板之间的液晶层。显示装置还包括设置在第二基板的面向第一基板的一侧上的公共电极层，其中公共电极层包括以矩阵布置的多个第一公共电极和多个第二公共电极。另外，第一公共电极和第二公共电极被配置为检测内嵌式触摸面板液晶显示装置上的触摸位置。

