



US 20110228189A1

(19) **United States**(12) **Patent Application Publication**
OH et al.(10) **Pub. No.: US 2011/0228189 A1**(43) **Pub. Date: Sep. 22, 2011**(54) **TOUCH SENSING TYPE LIQUID CRYSTAL
DISPLAY DEVICE AND METHOD OF
FABRICATING THE SAME****Publication Classification**(51) **Int. Cl.****G02F 1/136** (2006.01)**G02F 1/1333** (2006.01)(52) **U.S. Cl. 349/43; 349/138**

(57)

ABSTRACT

A touch sensing type liquid crystal display device includes an array substrate including a first substrate, a common electrode, a pixel electrode, and a touch sensing unit; a color filter substrate including a second substrate and facing the array substrate; an anti-static layer on an outer side of the second substrate, the anti-static layer having a sheet resistance of about 10^7 to 10^9 ohms per square (Ω/sq); and a liquid crystal layer between the first substrate and an inner side of the second substrate.

(76) **Inventors:** **Kum-Mi OH**, Seoul (KR);
Yong-Su An, Annyang-si (KR);
Kyoung-Jin Nam, Paju-si (KR);
Han-Seok Lee, Seoul (KR)(21) **Appl. No.: 13/050,816**(22) **Filed: Mar. 17, 2011**(30) **Foreign Application Priority Data**

Mar. 19, 2010 (KR) 10-2010-0024916

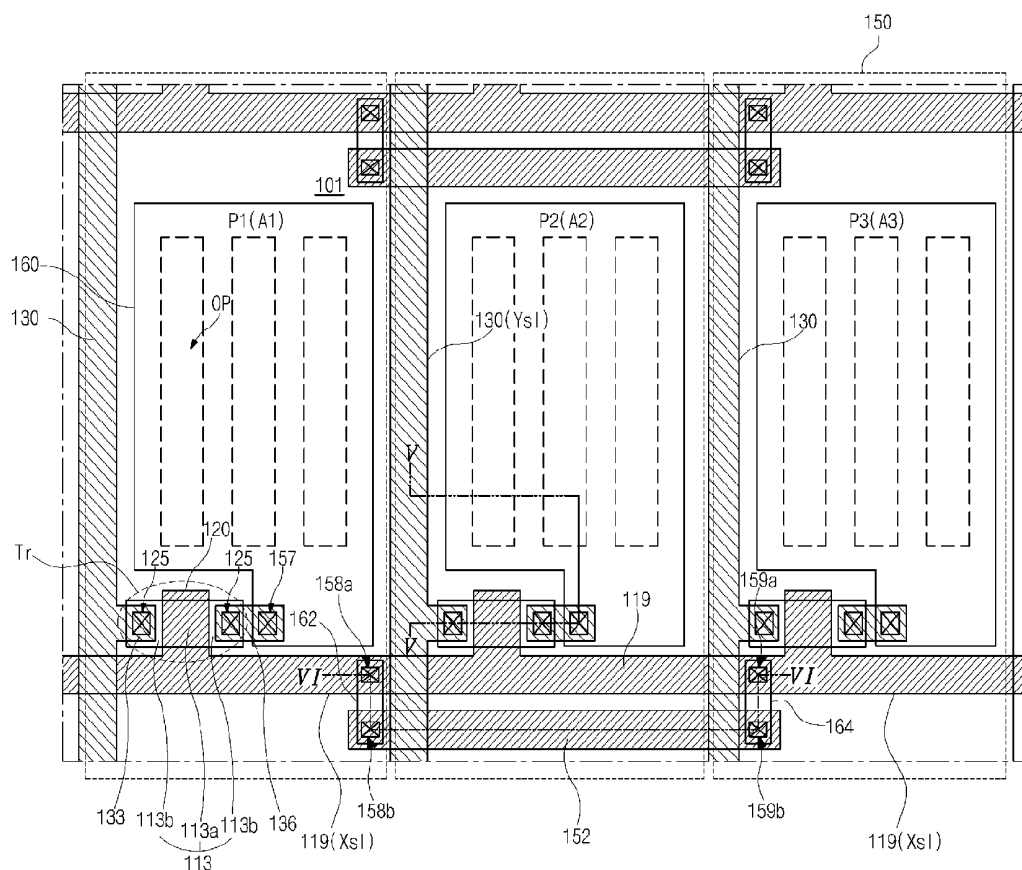


FIG. 1

RELATED ART

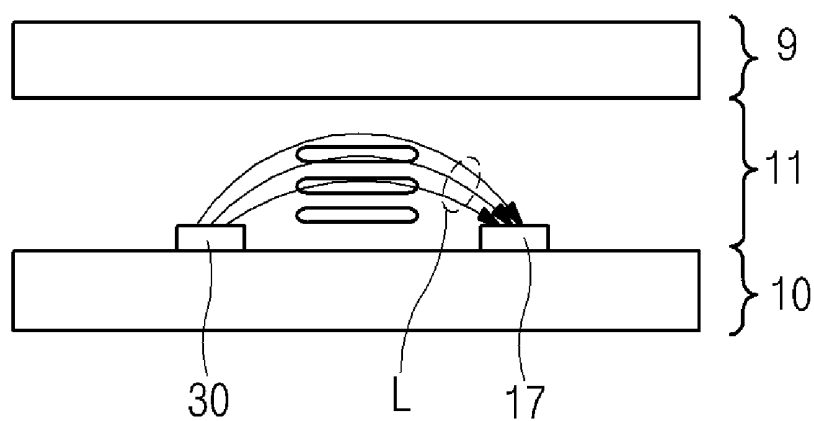


FIG. 2A

RELATED ART

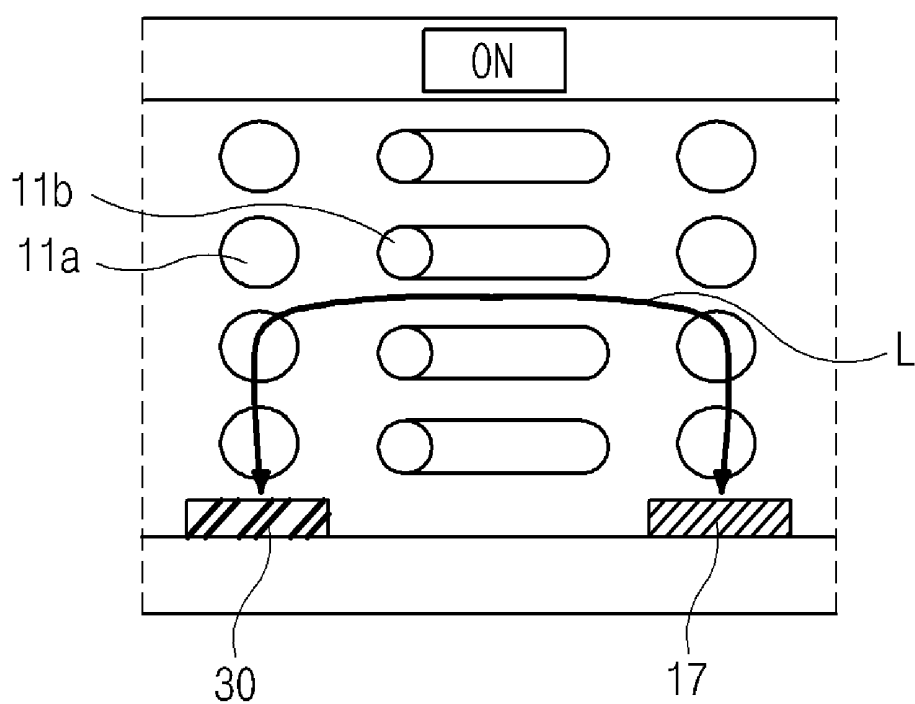


FIG. 2B

RELATED ART

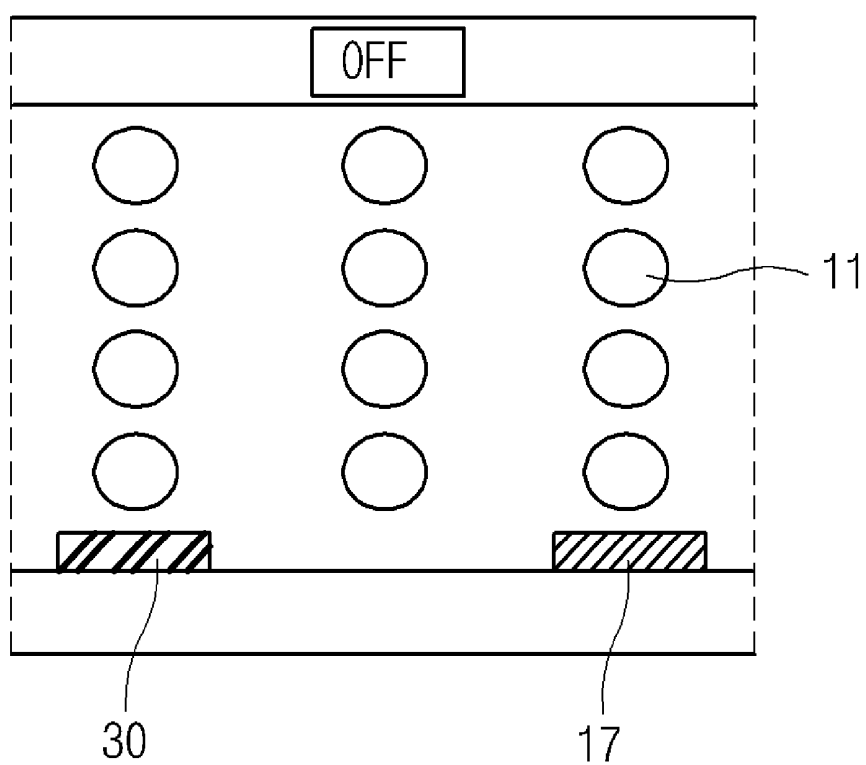


FIG. 3

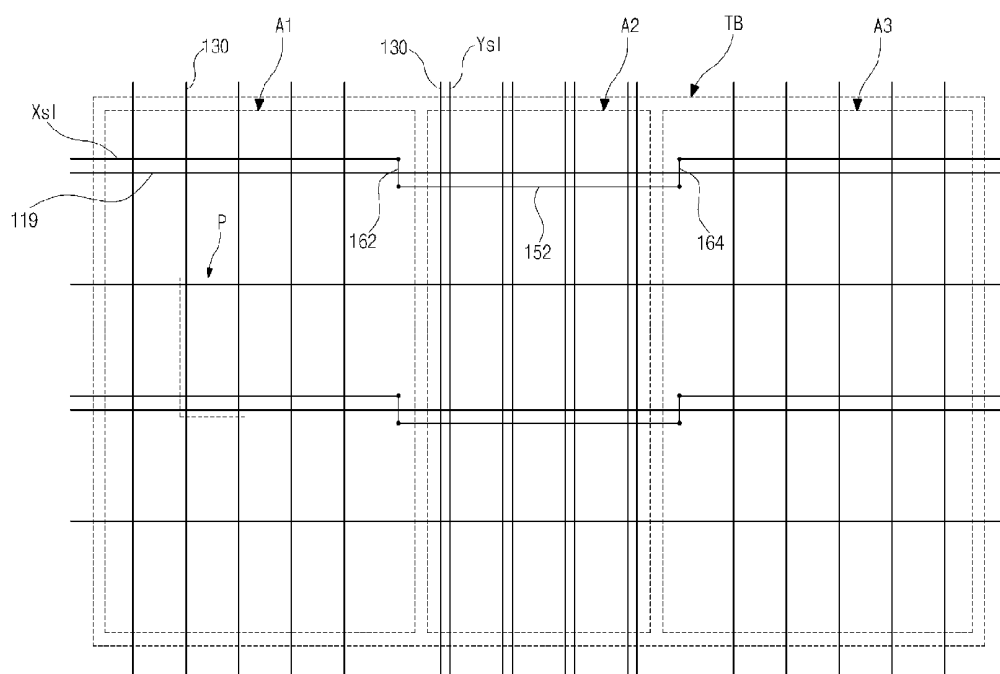


FIG. 4

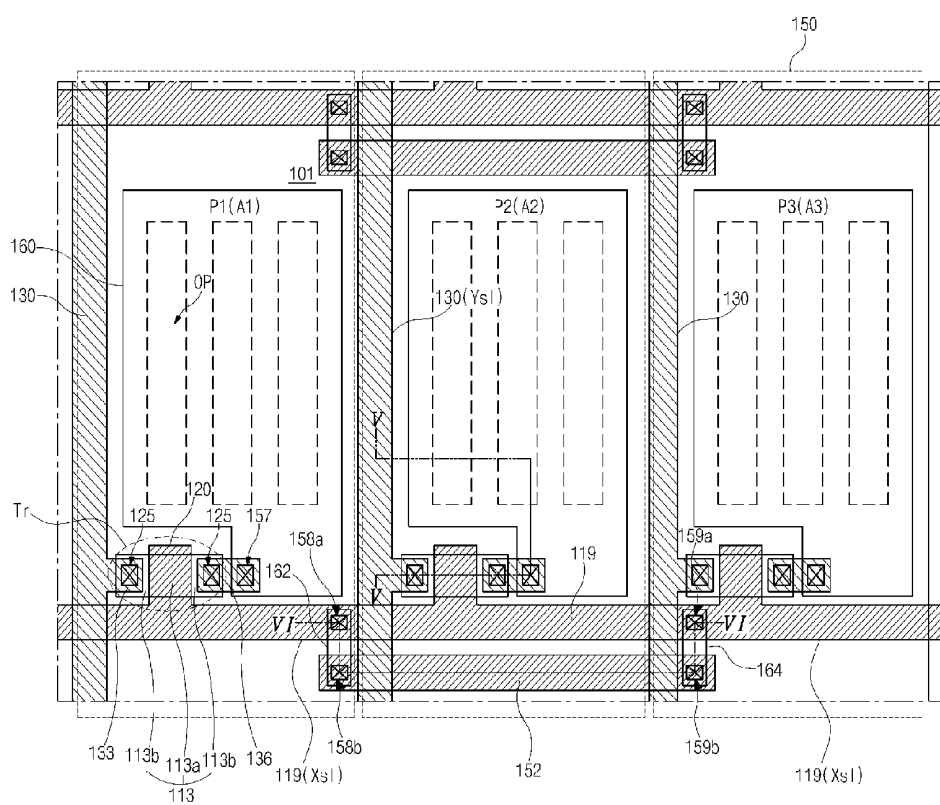


FIG. 7C

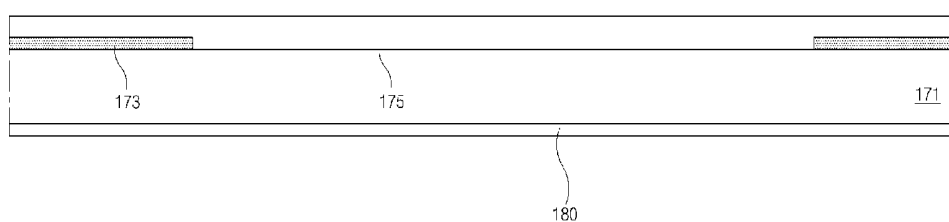


FIG. 7D

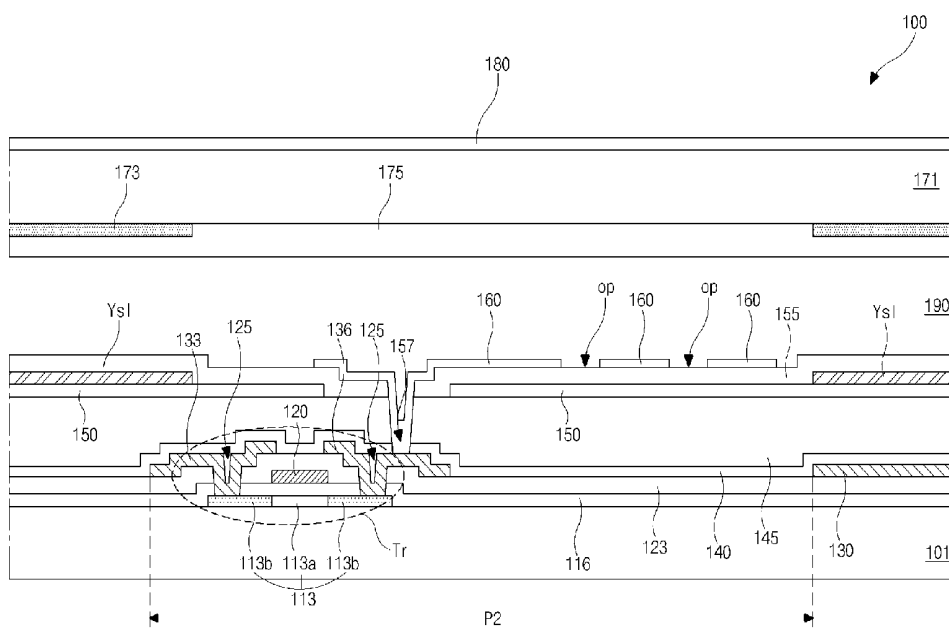


FIG. 8A

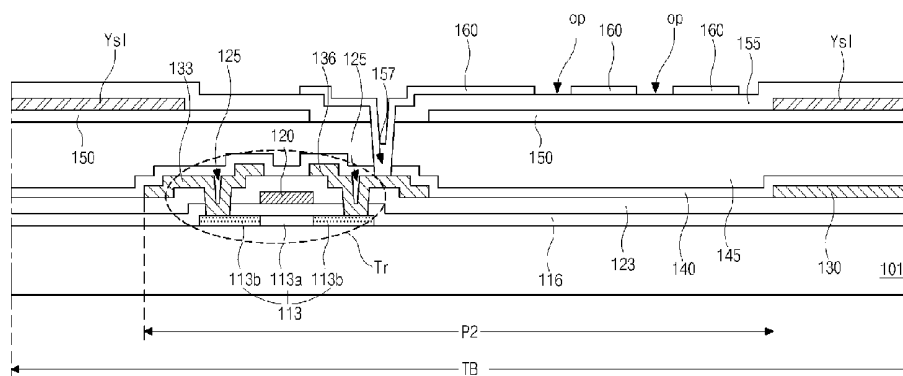


FIG. 8B

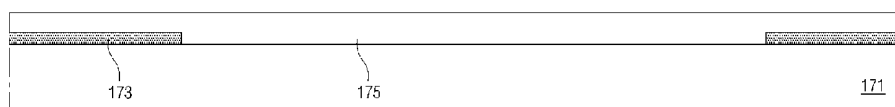


FIG. 8C

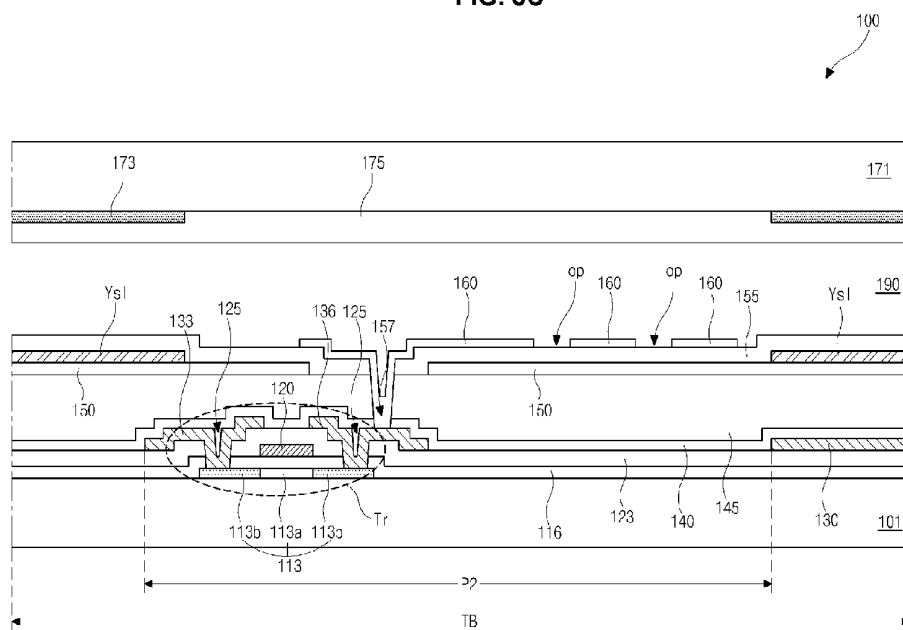


FIG. 8D

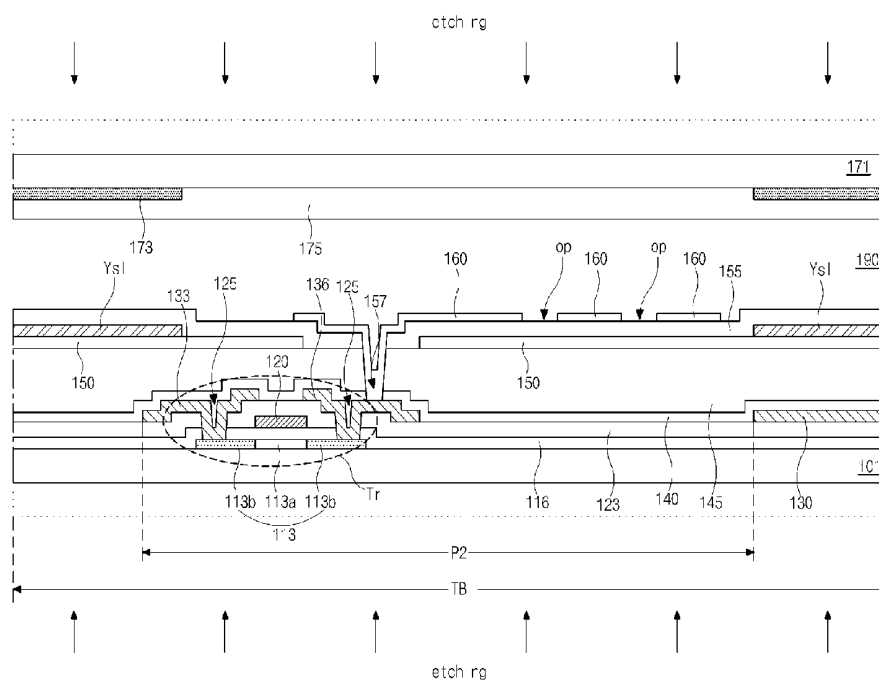
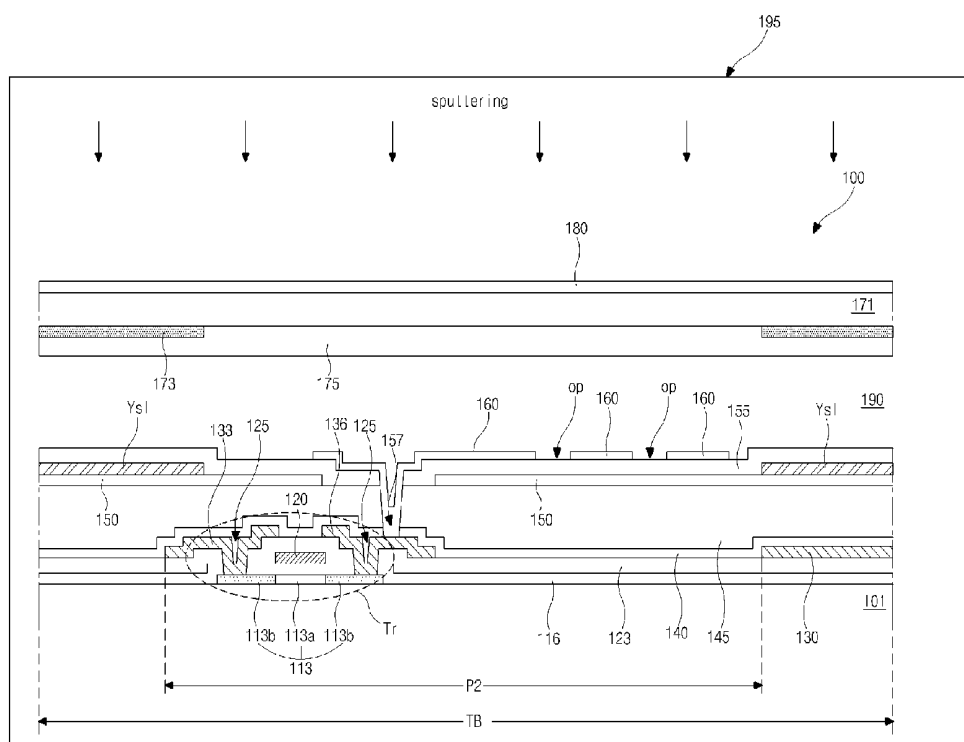


FIG. 8E



Patent Application Publication Sep. 22, 2011 Sheet 9 of 9

US 2011/0228189 A1

TOUCH SENSING TYPE LIQUID CRYSTAL DISPLAY DEVICE AND METHOD OF FABRICATING THE SAME

[0001] The present application claims the benefit of Korean Patent Application No. 2010-0024916 filed in Korea on Mar. 19, 2010, which is hereby incorporated by reference for all purposes as if fully set forth herein.

BACKGROUND OF THE INVENTION

[0002] 1. Field of the Invention

[0003] The present invention relates to a liquid crystal display (LCD) device, and more particularly, to a touch sensing type LCD device including an anti-static layer and a method of fabricating the same.

[0004] 2. Discussion of the Related Art

[0005] Recently, LCD devices have been widely used as a technology-intensive and value-added device of next generation due to their low power consumption and portability. In general, an LCD device uses the optical anisotropy and polarization properties of liquid crystal molecules to produce an image. Due to the optical anisotropy of the liquid crystal molecules, refraction of light incident onto the liquid crystal molecules depends upon the alignment direction of the liquid crystal molecules. The liquid crystal molecules have long thin shapes that can be aligned along specific directions. The alignment direction of the liquid crystal molecules can be controlled by applying an electric field. Accordingly, the alignment of the liquid crystal molecules changes in accordance with the direction of the applied electric field and the light is refracted along the alignment direction of the liquid crystal molecules due to the optical anisotropy, thereby displaying images.

[0006] Because the LCD device including a thin film transistor (TFT) as a switching element, referred to as an active matrix LCD (AM-LCD) device, has excellent characteristics of high resolution and displaying moving images, the AM-LCD device has been widely used.

[0007] The AM-LCD device includes an array substrate, a color filter substrate and a liquid crystal layer interposed therebetween. The array substrate may include a pixel electrode and the TFT, and the color filter substrate may include a color filter layer and a common electrode. The AM-LCD device is driven by an electric field between the pixel electrode and the common electrode to have excellent properties of transmittance and aperture ratio. However, because the AM-LCD device uses a vertical electric field, the AM-LCD device has a bad viewing angle.

[0008] An in-plane switching (IPS) mode LCD device or a fringe field switching (FFS) mode LCD device may be used to resolve the above-mentioned limitations. FIG. 1 is a cross-sectional view of an IPS mode LCD device according to the related art. As shown in FIG. 1, the array substrate and the color filter substrate are separated and face each other. The array substrate includes a first substrate 10, a common electrode 17 and a pixel electrode 30. Though not shown, the array substrate may include a TFT, a gate line, a data line, and so on. The color filter substrate includes a second substrate 9, a color filter layer (not shown), and so on. A liquid crystal layer 11 is interposed between the first substrate 10 and the second substrate 9. Because the common electrode 17 and the pixel electrode 30 are formed on the first substrate 10 on the same level, a horizontal electric field "L" is generated between the

common and pixel electrodes 17 and 30. The liquid crystal molecules of the liquid crystal layer 11 are driven by a horizontal electric field such that the IPS mode LCD device has a wide viewing angle.

[0009] FIGS. 2A and 2B are cross-sectional views illustrating turned on/off conditions of an IPS mode LCD device according to the related art. As shown in FIG. 2A, when the voltage is applied to the IPS mode LCD device, liquid crystal molecules 11a above the common electrode 17 and the pixel electrode 30 are unchanged. But, liquid crystal molecules 11b between the common electrode 17 and the pixel electrode 30 are horizontally arranged due to the horizontal electric field "L". Because the liquid crystal molecules are arranged by the horizontal electric field, the IPS mode LCD device has a characteristic of a wide viewing angle. FIG. 2B shows a condition when the voltage is not applied to the IPS mode LCD device. Because an electric field is not generated between the common and pixel electrodes 17 and 30, the arrangement of liquid crystal molecules 11 is not changed.

[0010] In the FFS mode LCD device, one of the pixel electrode and the common electrode has a plate shape in the pixel region, and the other one has an opening. The pixel and common electrode are formed on a lower substrate. As a result, liquid crystal molecules are driven by a fringe field between the pixel and common electrodes.

[0011] Unfortunately, because there is no common electrode formed of a conductive material on an upper substrate in the IPS mode LCD device or the FFS mode LCD device, an anti-static layer, which is formed of a transparent conductive material such as indium-tin-oxide (ITO) and indium-zinc-oxide (IZO), is required on an outer side of the upper substrate to prevent problems resulting from a static electricity. Generally, the anti-static layer has a thickness of about 200 angstroms (Å) and a sheet resistance of about 500 ohms per square (Ω/sq). because the sheet resistance of the anti-static layer is substantially the same as that of a metallic material, there is no damage on the device from the static electricity due to the anti-static layer.

[0012] The IPS mode LCD device or the FFS mode LCD device are used for a television, a projector, a mobile phone, a PDA, and so on. Recently, mobile devices include a touch sensor such that the device can be operated by touching.

[0013] Unfortunately, even if a capacitive overlay type touch sensor is included in the cell of the IPS mode LCD device or the FFS mode LCD device, a change of capacitance generated by a touch may not be detected because of the anti-static layer, which is formed of the transparent conductive material such as indium-tin-oxide (ITO) and indium-zinc-oxide (IZO), of the IPS mode LCD device or the FFS mode LCD device. Thus, the related art IPS mode LCD device or the FFS mode LCD device may not be operated with a touch sensor.

[0014] In more detail, when the user touches his finger onto the IPS mode LCD device or the FFS mode LCD device, the capacitance is generated between the finger and the anti-static layer of the IPS mode LCD device or the FFS mode LCD device. The capacitance is discharged into an outer space through the anti-static layer such that the touch of the user can not be detected by the capacitive overlay type touch sensor. If the anti-static layer is removed for touch sensing, there may be damages to the IPS mode LCD device or the FFS mode LCD device from static electricity.

SUMMARY OF THE INVENTION

[0015] Accordingly, the present invention is directed to a touch sensing type LCD device and a method of fabrication the same that substantially obviates one or more of the problems due to limitations and disadvantages of the related art.

[0016] Additional features and advantages of the invention will be set forth in the description which follows, and in part will be apparent from the description, or may be learned by practice of the invention. These and other advantages of the invention will be realized and attained by the structure particularly pointed out in the written description and claims hereof as well as the appended drawings.

[0017] To achieve these and other advantages and in accordance with the purpose of the present invention, as embodied and broadly described herein, a touch sensing type liquid crystal display device includes an array substrate including a first substrate, a common electrode, a pixel electrode, and a touch sensing unit; a color filter substrate including a second substrate and facing the array substrate; an anti-static layer on an outer side of the second substrate, the anti-static layer having a sheet resistance of about 10^7 to 10^9 ohms per square (Ω/sq); and a liquid crystal layer between the first substrate and an inner side of the second substrate.

[0018] In another aspect of the present invention, a method of fabricating a touch sensing type liquid crystal display device includes forming a gate line, a data line, a thin film transistor, a common electrode, a pixel electrode and a touch sensing unit on a first substrate; forming an anti-static layer on an outer side of a second substrate, the anti-static layer having a sheet resistance of about 10^7 to 10^9 ohms per square (Ω/sq); and attaching the first and second substrates with a liquid crystal layer interposed between the first and second substrates.

[0019] In another aspect of the present invention, a method of fabricating a touch sensing type liquid crystal display device includes forming a gate line, a data line, a thin film transistor, a common electrode, a pixel electrode and a touch sensing unit on a first substrate; attaching a second substrate to the first substrate to form a liquid crystal panel, wherein the liquid crystal panel has a first thickness; etching an outer side of each of the first and second substrates such that the liquid crystal panel has a second thickness smaller than the first thickness; and forming an anti-static layer on the outer side of the second substrate, the anti-static layer having a sheet resistance of about 10^7 to 10^9 ohms per square (Ω/sq).

[0020] It is to be understood that both the foregoing general description and the following detailed description are exemplary and explanatory and are intended to provide further explanation of the invention as claimed.

BRIEF DESCRIPTION OF THE DRAWINGS

[0021] The accompanying drawings, which are included to provide a further understanding of the invention and are incorporated in and constitute a part of this specification, illustrate embodiments of the invention and together with the description serve to explain the principles of the invention.

[0022] In the drawings:

[0023] FIG. 1 is a cross-sectional view of an IPS mode LCD device according to the related art;

[0024] FIGS. 2A and 2B are cross-sectional views illustrating turned on/off conditions of an IPS mode LCD device according to the related art;

[0025] FIG. 3 is a schematic plane view of an array substrate for a touch sensing type LCD device according to the present invention;

[0026] FIG. 4 is a plane view illustrating a part of an array substrate for a touch sensing type LCD device according to the present invention;

[0027] FIG. 5 is a cross-sectional view taken along line V-V of FIG. 4;

[0028] FIG. 6 is a cross-sectional view taken along line VI-VI of FIG. 4;

[0029] FIGS. 7A to 7D are cross-sectional views illustrating a fabricating process of a touch sensing type LCD device according to an embodiment of the present invention; and

[0030] FIGS. 8A to 8E are cross-sectional views illustrating a fabricating process of a touch sensing type LCD device according to an embodiment of the present invention.

DETAILED DESCRIPTION OF THE ILLUSTRATED EMBODIMENTS

[0031] Reference will now be made in detail to embodiments of the present invention, examples of which are illustrated in the accompanying drawings. The same reference numbers may be used throughout the drawings to refer to the same or like parts.

[0032] FIG. 3 is a schematic plane view of an array substrate for a touch sensing type LCD device according to the present invention.

[0033] As shown in FIG. 3, a plurality of touch blocks TB are defined on an array substrate. In addition, first to third regions A1, A2 and A3 are defined in each touch block TB. The second region A2 is disposed between the first and third regions A1 and A3. The touch block TB is a unit region of touch sensing. A plurality of pixel regions P are defined in each of the first to third regions A1, A2 and A3.

[0034] A plurality of gate lines 119 extend along a first direction, i.e., an X direction, and a plurality of data lines 130 extend along a second direction, i.e., a Y direction. The gate lines 119 and the data lines 130 cross each other to define the pixel regions P.

[0035] In addition, an X direction sensing line Xsl extends along the first direction through the first region A1 and the third region A3. The X direction sensing line Xsl is disposed over the gate line 119. Namely, the X direction sensing line Xsl overlaps the gate line 119. The X direction sensing lines Xsl in the first and third regions A1 and A3 in one touch block TB is electrically connected to a connection line 152 in the second region A2. The connection line 152 extends along the gate line 119 and is spaced apart from the gate line 119 to avoid an electrical short. The connection line 152 may be formed of the same material and disposed at the same layer as the gate line 119. One end of the connection line 152 is connected to the X direction sensing line Xsl in the first region A1 through a first connection pattern 162, and the other end of the connection line 152 is connected to the X direction sensing line Xsl in the third region A3 through a second connection pattern 164.

[0036] A Y direction sensing line Ysl extends along the second direction through the second region A2. The Y direction sensing line Ysl is disposed over the data line 130. Namely, the Y direction sensing line Ysl overlaps the data line 130. Because the Y direction sensing line Ysl is disposed at a different layer than the connection line 152, there is no electrical short.

[0037] Although not shown, a common electrode having a plate shape and a pixel electrode having an opening are formed with an insulating layer therebetween. The pixel electrode in one pixel region is separated from that in another pixel region. The common electrode in one touch block TB is separated from that in another touch block TB. In addition, the common electrodes the first to third areas A1, A2 and A3 are separated from one another. An X direction sensing circuit is disposed at one end of the X direction sensing line Xsl, and a Y direction sensing circuit is disposed at one end of the Y direction sensing line Ysl. The X direction sensing circuit and the Y direction sensing circuit are positioned at a non-display area at a periphery of a display area including the touch blocks TB.

[0038] When one touch block TB is touched, a change of capacitance between the pixel and common electrode are detected by the X direction sensing circuit and the Y direction sensing circuit through the X direction sensing line Xsl and the Y direction sensing line Ysl, respectively. As a result, a position of the touched touch block TB is sensed.

[0039] FIG. 4 is a plane view illustrating a part of an array substrate for a touch sensing type LCD device according to the present invention. FIG. 5 is a cross-sectional view taken along line V-V of FIG. 4, and FIG. 6 is a cross-sectional view taken along line VI-VI of FIG. 4. FIG. 4 shows first to third regions each including one pixel region. However, as illustrated in FIG. 3, each of the first to third regions may have more than one pixel region.

[0040] As illustrated in FIGS. 4 to 6, a gate line 119 and a data line 130 are formed on a first substrate 101. The gate and data lines 119 and 130 cross each other to define first to third pixel regions P1, P2 and P3. The first to third pixel regions P1, P2, P3 are respectively included to the first to third regions A1, A2 and A3.

[0041] In each pixel region P, a thin film transistor (TFT) Tr including a semiconductor layer 113, a gate electrode 120, a source electrode 133 and a drain electrode 136 is formed. The gate electrode 120 and the source electrode 133 respectively extend from the gate line 119 and the data line 130 such that the TFT Tr is electrically connected to the gate line 119 and the data line 130.

[0042] The semiconductor layer 113 is formed of polycrystalline silicon. A first semiconductor region 113a of a center of the semiconductor layer 113, which is formed of intrinsic polycrystalline silicon, serves as a channel, and second semiconductor regions 113b at both sides of the first semiconductor region 113a are doped by high-concentration impurities. A gate insulating layer 116 is formed on the semiconductor layer 113.

[0043] The gate electrode 120 is formed on the gate insulating layer 116 and corresponding to the first semiconductor region 113a. The gate line 119 is formed on the gate insulating layer 116 and connected to the gate electrode 120. A connection line 152 is also formed on the gate insulating layer 116 and parallel to the gate line 119. The connection line 152 is spaced apart from the gate line. The connection line 152 is disposed in the second pixel region P2 of the second region A2, and both ends of the connection line 152 are respectively disposed in the first pixel region P1 of the first region A1 and the third pixel region P3 of the third region A3.

[0044] An interlayer insulating layer 123 is formed on the gate line 119, the gate electrode 120 and the connection line 152. For example, the interlayer insulating layer 123 may be formed of an inorganic insulating material, for example, sili-

con oxide or silicon nitride. The interlayer insulating layer 123 and the gate insulating layer 116 are patterned to form semiconductor contact holes 125 exposing the second semiconductor regions 113b of the semiconductor layer 113.

[0045] On the interlayer insulating layer 123, the data line 130 is formed to cross the gate line 119. In addition, the source electrode 133 and the drain electrode 136 are formed on the interlayer insulating layer 123. The source and drain electrodes 133 and 136 respectively contact the second semiconductor regions 113b through the semiconductor contact holes 125.

[0046] As mentioned above, the semiconductor layer 113, the gate insulating layer 116, the gate electrode 120, the interlayer insulating layer 123, the source electrode 133 and the drain electrode 136 constitute the TFT Tr. This may be referred to as a top gate type TFT. Alternatively, a bottom gate type TFT, where a semiconductor layer is positioned between a gate electrode as a lower layer of the TFT and source and drain electrodes as an upper layer of the TFT, may be used.

[0047] A first passivation layer 140, which is formed of an inorganic insulating material, for example, silicon oxide or silicon nitride, and a second passivation layer 145, which is formed of an organic insulating material, for example, photoacryl or benzocyclobutene (BCB), are stacked on the data line 130, the source electrode 133 and the drain electrode 136. The second passivation layer 145 may have a thickness of about 2 to 4 micrometers to provide a flat top surface. Because an adhesive strength between a metallic material of the data line 130 and the organic insulating material of the second passivation layer 145 is smaller than an adhesive strength between a metallic material of the data line 130 and the inorganic insulating material of the first passivation layer 140 and between the inorganic insulating material of the first passivation layer 140 and the organic insulating material of the second passivation layer 145, an adhesive property between the metallic material of the data line 130 and the organic insulating material of the second passivation layer 145 is improved due to the first passivation layer 140. The first passivation layer 140 may be omitted.

[0048] A common electrode 150, which has an island shape in each of the first to third regions A1, A2 and A3, is formed on the second passivation layer 145. Namely, the common electrode 150 in the second region A2 is separated from that in each of the first and third regions A1 and A3. The common electrode 150 has a plate shape. The common electrode 150 is formed of a transparent conductive material, for example, indium-tin-oxide (ITO) or indium-zinc-oxide (IZO).

[0049] An X direction sensing line Xsl and a Y direction sensing line Ysl are formed on the common electrode 150. The X direction sensing line Xsl overlaps the gate line 119 in the first and third regions A1 and A3, and the Y direction sensing line Ysl overlaps the data line 130 in the second region A2. The Y direction sensing line Ysl extends along the data line 130 such that the second regions A2 arranged along the data line 130 are electrically connected by the Y direction sensing line Ysl. The X direction sensing lines Xsl in the first and third regions A1 and A2 of each touch block TB (of FIG. 3) are electrically connected to each other through the connection line 152.

[0050] A third passivation layer 155 is formed on the X direction sensing line Xsl and the Y direction sensing line Ysl. The third passivation layer 155 may be formed of an inorganic insulating material, for example, silicon oxide or silicon nitride.

[0051] The first to third passivation layers **140**, **145** and **155** are patterned to form a drain contact hole **157** exposing the drain electrode **136**. In addition, the third passivation layer **155** is patterned to form first and second contact holes **158a** and **159a** respectively exposing the X sensing lines Xsl in the first and third regions A1 and A3. Furthermore, the first to third passivation layer **140**, **145** and **155** and the interlayer insulating layer **123** are patterned to form third and fourth contact holes **158b** and **159b** respectively exposing ends of the connection line **152**.

[0052] A pixel electrode **160** is formed on the third passivation layer **155**. The pixel electrode **160** is disposed in each pixel region P and contacts the drain electrode **136** through the drain contact hole **157**. The pixel electrode **160** is formed of a transparent conductive material, for example, ITO or IZO. The pixel electrode **160** has at least one opening op, which corresponds to the common electrode **150**, such that a fringe field is generated between the pixel and common electrodes **160** and **150**. The third passivation layer **155** is interposed between the pixel and common electrodes **160** and **150** such that a storage capacitor is formed.

[0053] In addition, first and second connection patterns **162** and **164** are formed on the third passivation layer **155**. One end of the first connection pattern **162** contacts the X direction sensing line Xsl in the first region A1 through the first contact hole **158a**, and the other end of the first connection pattern **162** contacts the connection line **152** through the third contact hole **158b**. One end of the second connection pattern **164** contacts the X direction sensing line Xsl in the third region A3 through the second contact hole **159a**, and the other end of the second connection pattern **164** contacts the connection line **152** through the fourth contact hole **159b**. As a result, the X direction sensing line Xsl in the first region A1 is electrically connected to the X direction sensing line Xsl in the third region A3.

[0054] A second substrate **171** faces the first substrate **101**. A black matrix **173** is formed on an inner side of the second substrate **171**. The black matrix **173** corresponds to boundaries of the pixel region P and has a lattice shape. The black matrix **173** may further correspond to the TFT Tr. A color filter **175** is formed on the inner side of the second substrate **171** and corresponds to the pixel region P. The color filter **175** may include red, green and blue color filters.

[0055] In addition, an anti-static layer **180** is formed on an outer side of the second substrate **171**. The anti-static layer **180** includes zinc-tin-oxide (ZTO) and has a thickness of about 100 to 1000 angstroms. The anti-static layer **180** has a sheet resistance of about 10^7 to 10^9 ohms per square (Ω/sq).

[0056] Since the anti-static layer **180**, which has a sheet resistance of about 10^7 to 10^9 ohms per square (Ω/sq), is formed on the outer side of the second substrate **171**, the layer **180** has an anti-static property. Namely, because the anti-static layer **180** has a sheet resistance of 10^7 to 10^9 ohms per square (Ω/sq), the anti-static layer **180** serves as a path for a static electricity such that there is no damage on the device from static electricity.

[0057] By providing a liquid crystal layer **190** between the first and second substrates **101** and **171** and a seal pattern (not shown) at edges of one of the first and second substrates **101** and **171**, the touch sensing type FFS mode LCD device is obtained. An FFS mode LCD device, which includes the common electrode having a plate shape and the pixel electrode having an opening, is illustrated in FIGS. 3 to 6. Alternatively, an IPS mode LCD device, which includes the com-

mon and pixel electrodes being alternately arranged with each other, is also available according to the principles of the present invention.

[0058] As mentioned above, the touch sensing type LCD device includes the anti-static layer **180**, which is formed of ZTO to have a sheet resistance of 10^7 to 10^9 ohms per square (Ω/sq), at an outer side of the second substrate **171**. The anti-static layer **180** serves as a path for static electricity and does not serve as an obstructer for touch sensing. Namely, the anti-static layer **180** serves as a dielectric layer between a finger of an user and the common electrode **150** when the device is touched such that a capacitor is formed between the finger and the common electrode **150**. As a result, a touch is detected by a change of capacitance between the finger and the common electrode **150**.

[0059] In more detail, when one touch block TB (of FIG. 3) is touched, the anti-static layer **180**, which has a sheet resistance of about 10^7 to 10^9 ohms per square (Ω/sq), serves as a dielectric layer such that a capacitor is generated by the finger, the common electrode **150**, the liquid crystal layer **190**, the color filter layer **175**, the second substrate **171**, the anti-static layer **180**, and so on. A change of capacitance of the capacitor is detected by the X direction sensing circuit (not shown) and the Y direction sensing circuit (not shown) through the X direction sensing line Xsl and the Y direction sensing line Ysl, which are respectively connected to the common electrode **150**, such that a position of the touched touch block TB is sensed.

[0060] Because static electricity has a voltage of several thousands to several hundreds of thousands, the anti-static layer **180**, which has a sheet resistance of about 10^7 to 10^9 ohms per square (Ω/sq), serves as a conductive path for static electricity. However, because an electric current of the finger has a range within several nano-amperes to several micro-amperes, the anti-static layer **180**, which has a sheet resistance of about 10^7 to 10^9 ohms per square (Ω/sq), serves as an insulating layer for the touch. Accordingly, the anti-static layer **180** serves as a dielectric layer of the capacitor for the touch. As a result, the device according to the present invention including a touch sensing part, i.e., the X direction sensing line Xsl and the Y direction sensing line Ysl, and the anti-static layer **180**, can be operated by a touch sensing, and there is no damage from a static electricity.

[0061] FIGS. 7A to 7D are cross-sectional views illustrating a fabricating process of a touch sensing type LCD device according to an embodiment of the present invention.

[0062] As illustrated in FIG. 7A, an array substrate is formed by following processes. An intrinsic amorphous silicon layer (not shown) is formed on the first substrate **101** by depositing intrinsic amorphous silicon. The amorphous silicon layer is crystallized by irradiating a laser beam or heating to form a polycrystalline silicon layer (not shown). The polycrystalline silicon layer is patterned by a mask process to form the semiconductor layer **113** in each pixel regions P1, P2 and P3. FIGS. 7A to 7D illustrate the second pixel region P2 of the second region A2 (of FIG. 3) in one touch block TB.

[0063] Next, the gate insulating layer **116** is formed on the semiconductor layer **113** by depositing an inorganic insulating material such as silicon oxide and silicon nitride.

[0064] Next, a first metal layer (not shown) is formed on the gate insulating layer **116** by depositing, for example, one of aluminum (Al), Al alloy (AlNd), copper (Cu), Cu alloy and chromium (Cr). The first metal layer is patterned to form the gate electrode **120**, the gate line **119** (of FIG. 4) and the

connection line **152** (of FIG. 4). The gate electrode **120** corresponds to a center of the semiconductor layer **113** and extends from the gate line **119**. The connection line **152** is spaced apart from and parallel to the gate line **119**. The connection line **152** is disposed in the second region **A2**, and both ends of the connection line **152** protrude to the first and third regions **A1** and **A3** (of FIG. 3 or FIG. 4).

[0065] Next, impurities are doped into the semiconductor layer **113** using the gate electrode **120** as a mask such that the impurities are doped into both sides of the semiconductor layer **113**. As a result, a first semiconductor region **113a** of a center of the semiconductor layer **113**, which is formed of intrinsic polycrystalline silicon, serves as a channel, and second semiconductor regions **113b** at both sides of the first semiconductor region **113a** are doped by high-concentration impurities.

[0066] Next, the interlayer insulating layer **123** is formed on the gate line **119**, the gate electrode **120** and the connection line **152** by depositing an inorganic insulating material, for example, silicon oxide or silicon nitride. The interlayer insulating layer **123** and the gate insulating layer **116** are patterned to form the semiconductor contact holes **125** exposing the second semiconductor regions **113b** of the semiconductor layer **113**.

[0067] Next, a second metal layer (not shown) is formed on the interlayer insulating layer **123** by depositing, for example, one of aluminum (Al), Al alloy (AlNd), copper (Cu), Cu alloy, chromium (Cr), and molybdenum (Mo). The second metal layer is patterned to form the data line **130**, the source electrode **133** and the drain electrode **136**. The source and drain electrodes **133** and **136** respectively contact the second semiconductor regions **113b** through the semiconductor contact holes **125**. The drain electrode **136** is spaced apart from the source electrode **133**. The data line **130** extends from the source electrode **133** and crosses the gate line **119** to define the pixel regions **P1**, **P2** and **P3**.

[0068] The semiconductor layer **113**, the gate insulating layer **116**, the gate electrode **120**, the interlayer insulating layer **123**, the source electrode **133** and the drain electrode **136** constitute the TFT Tr. This may be referred to as a top gate type TFT. Alternatively, a bottom gate type TFT, where a semiconductor layer is positioned between a gate electrode as a lower layer of the TFT and source and drain electrodes as an upper layer of the TFT, may be used. To form the bottom gate type TFT, a step of forming the gate electrode, the gate line and the connection line, a step of forming the gate insulating layer, a step of forming a semiconductor layer, which includes an active layer of intrinsic amorphous silicon and an ohmic contact layer of impurity-doped amorphous silicon, and a step of forming the data line, the source electrode and the drain electrode, are sequentially processed.

[0069] Next, a first passivation layer **140** and a second passivation layer **145** are sequentially formed on the TFT Tr and the data line **130** by depositing an inorganic insulating material and coating an organic insulating material. The second passivation layer **145** has a flat top surface. The first passivation layer **140** for enhancing an adhesive property between a metallic material of the data line and the organic insulating material of the second passivation layer **145** may be omitted.

[0070] Next, a first transparent conductive material layer (not shown) is formed on the second passivation layer **145** by depositing a transparent conductive material, for example, ITO or IZO. The first transparent conductive material layer is

patterned to form the common electrode **150**. As mentioned above, the common electrode **150** has an island shape in each of the first to third regions **A1**, **A2** and **A3**. Namely, the common electrode **150** in the second region **A2** is separated from that in each of the first and third regions **A1** and **A3**.

[0071] Next, a third metal layer (not shown) is formed on the common electrode **150** by depositing, for example, one of aluminum (Al), Al alloy (AlNd), copper (Cu) and Cu alloy. The third metal layer is patterned to form the X direction sensing line Xsl (of FIG. 4) and the Y direction sensing line Ysl. The X direction sensing line Xsl overlaps the gate line **119** in the first and third regions **A1** and **A3**, and the Y direction sensing line Ysl overlaps the data line **130** in the second region **A2**. The Y direction sensing line Ysl extends along the data line **130** such that the second regions **A2** arranged along the data line **130** are electrically connected by the Y direction sensing line Ysl. The X direction sensing lines Xsl in the first and third regions **A1** and **A2** of each touch block TB (of FIG. 3) are electrically connected to each other through the connection line **152**.

[0072] Next, a third passivation layer **155** is formed on the X direction sensing line Xsl and the Y direction sensing line Ysl by depositing an inorganic insulating material, for example, silicon oxide or silicon nitride. The third passivation layer **155** is patterned to form first and second contact holes **158a** and **159a** respectively exposing the X sensing lines Xsl in the first and third regions **A1** and **A3**. The first to third passivation layers **140**, **145** and **155** are patterned to form a drain contact hole **157** exposing the drain electrode **136**. The first to third passivation layer **140**, **145** and **155** and the interlayer insulating layer **123** are patterned to form third and fourth contact holes **158b** and **159b** respectively exposing ends of the connection line **152**.

[0073] Next, a second transparent conductive material layer (not shown) is formed on the third passivation layer **145** by depositing a transparent conductive material, for example, ITO or IZO. The second transparent conductive material layer is patterned to form the pixel electrode **160**, and the first and second connection patterns **162** and **164**. The pixel electrode **160** is disposed in each pixel region **P** and contacts the drain electrode **136** through the drain contact hole **157**. The pixel electrode **160** has at least one opening op, which corresponds to the common electrode **150**, such that a fringe field is generated between the pixel and common electrodes **160** and **150**. One end of the first connection pattern **162** contacts the X direction sensing line Xsl in the first region **A1** through the first contact hole **158a**, and the other end of the first connection pattern **162** contacts the connection line **152** through the third contact hole **158b**. One end of the second connection pattern **164** contacts the X direction sensing line Xsl in the third region **A3** through the second contact hole **159a**, and the other end of the second connection pattern **164** contacts the connection line **152** through the fourth contact hole **159b**. As a result, the X direction sensing line Xsl in the first region **A1** is electrically connected to the X direction sensing line Xsl in the third region **A3**.

[0074] Next, as illustrated in FIG. 7B, the anti-static layer **180**, which has a sheet resistance of about 10^7 to 10^9 ohms per square (Ω/sq), is formed on an outer side of the second substrate **171** by a sputtering process in a sputtering apparatus **195**. A target of the sputtering process includes a target material of ZTO. Since there is no other element on the second

substrate **171** when the sputtering process is performed, there is no limitation in a condition of the sputtering process. For example, the sputtering process may be performed under a room temperature or a temperature above about 300° C.

[0075] When the sputtering process is performed on the outer side of the second substrate **171**, an amount of deposited ZTO increases depending on a depositing time. The sputtering process is performed such that the anti-static layer **180**, which has a thickness of about 100 to 1000 angstroms, is formed on the outer side of the second substrate **171**. Because ZTO has a relative higher specific resistance than other transparent conductive materials, the anti-static layer **180** having a thickness of about 100 to 1000 angstroms has a sheet resistance of about 10^7 to 10^9 ohms per square (Ω/sq).

[0076] Next, as illustrated in FIG. 7C, a light blocking material, for example, a black resin, is coated on an inner side of the second substrate **171** and patterned by a mask process to form the black matrix **173**. Next, the color filter **175** including the red, green and blue color filters is formed on the inner side of the second substrate **171**. As a result, a color filter substrate is obtained. Although not shown, an overcoat layer for providing a flat top surface may be formed.

[0077] Next, as illustrated in FIG. 7D, the array substrate and the color filter substrate are disposed such that the color filter layer **175** faces the pixel electrode **160**, and a seal pattern (not shown) is formed along edges of one of the array substrate and the color filter substrate. Next, the liquid crystal layer **190** is disposed between the array substrate and the color filter substrate, and the array substrate and the color filter substrate are attached to form a liquid crystal panel.

[0078] Although not shown, the X direction sensing circuit and the Y direction sensing circuit, which are respectively connected to the X direction sensing line and the Y direction sensing line, and a driving circuit connected to the gate line **119** and the data line **130** are formed on the liquid crystal panel to obtain the device **100**.

[0079] FIGS. 8A to 8E are cross-sectional views illustrating a fabricating process of a touch sensing type LCD device according to another embodiment of the present invention.

[0080] The process shown by FIGS. 8A to 8E has differences in a step of forming the anti-static layer and a step of etching the first and second substrates. Accordingly, below explanation is focused on the differences.

[0081] As illustrated in FIG. 8A, the array substrate is obtained by forming the TFT Tr, the gate line **119**, the data line **130**, the X direction sensing line Xsl, the Y direction sensing line Ysl, the common electrode **150**, the pixel electrode **160**, the connection line **152**, the connection patterns **162** and **164**, and so on.

[0082] Next, as illustrated in FIG. 8B, the black matrix **173** and the color filter layer **175** are formed on an inner side of the second substrate **171**. Although not shown, an overcoat layer may be formed on the color filter layer **175**.

[0083] Next, as illustrated in FIG. 8C, the first substrate **101** and the second substrate **171** are disposed such that the color filter layer **175** faces the pixel electrode **160**, and a seal pattern (not shown) is formed along edges of one of the first substrate **101** and the second substrate **171**. Next, the liquid crystal layer **190** is disposed between the first substrate **101** and the second substrate **171**, and first substrate **101** and the second substrate **171** are attached to form a liquid crystal panel.

[0084] Next, as illustrated in FIG. 8D, the liquid crystal panel is exposed to an etchant, which is capable of etching glass of the first and second substrates **101** and **171**, to reduce a thickness of each of the first and second substrates **101** and **171**. Namely, a thickness of liquid crystal panel is reduced. For example, the etchant may include hydrofluoric acid (HF). A dipping process or a spray process may be used. As a result, a light weight and thin profile LCD device can be obtained.

[0085] When the thickness of the first and second substrates **101** and **171** are reduced before forming elements, for example, the TFT Tr or the color filter layer **175**, there may be crack or break. Accordingly, as mentioned above, after forming the elements on the first and second substrates **101** and **171** having a thickness of about 0.5 to 0.7 mm, the etching process is performed to reduce the thickness of the first and second substrates **101** and **171**. For example, the first and second substrates **101** and **171** may have a thickness of about 0.2 to 0.3 mm after the etching process.

[0086] Next, as illustrated in FIG. 8E, the anti-static layer **180**, which has a sheet resistance of about 10^7 to 10^9 ohms per square (Ω/sq), is formed on an outer side of the second substrate **171** by a sputtering process in a sputtering apparatus **195**. The anti-static layer **180** has a thickness of about 100 to 1000 angstroms. A target of the sputtering process includes a target material of ZTO.

[0087] In this case, the sputtering process is performed under a temperature below 100° C., beneficially a room temperature. Because there is the liquid crystal layer **190** between the first and second substrates **101** and **171** when the sputtering process is performed, there may be damages on the liquid crystal panel if the sputtering process is performed under a temperature above 100° C. For example, the seal pattern may be collapsed by an expansion of the liquid crystal layer **190**.

[0088] Although not shown, the X direction sensing circuit and the Y direction sensing circuit, which are respectively connected to the X direction sensing line and the Y direction sensing line, and a driving circuit connected to the gate line **119** and the data line **130**, are formed on the liquid crystal panel to obtain the device **100**.

[0089] It will be apparent to those skilled in the art that various modifications and variation can be made in the present invention without departing from the spirit or scope of the invention. Thus, it is intended that the present invention cover the modifications and variations of this invention provided they come within the scope of the appended claims and their equivalents.

What is claimed is:

1. A touch sensing type liquid crystal display device, comprising:

- an array substrate including a first substrate, a common electrode, a pixel electrode, and a touch sensing unit;
- a color filter substrate including a second substrate and facing the array substrate;
- an anti-static layer on an outer side of the second substrate, the anti-static layer having a sheet resistance of about 10^7 to 10^9 ohms per square (Ω/sq); and
- a liquid crystal layer between the first substrate and an inner side of the second substrate.

2. The device according to claim 1, wherein the anti-static layer includes zinc-tin-oxide and has a thickness of about 100 to 1000 angstroms.

3. The device according to claim 1, wherein the touch sensing unit includes:

- an X direction sensing line;
- a Y direction sensing line;
- an X direction sensing circuit at one end of the X direction sensing line; and
- a Y direction sensing circuit at one end of the Y direction sensing line,

wherein a change of capacitance by a touch is detected by the X direction sensing circuit and the Y direction sensing circuit through the X direction sensing line and the Y direction sensing line, respectively.

4. The device according to claim 3, wherein a plurality of touch blocks are defined on the first substrate, and each touch block includes first to third regions, each of which includes at least one pixel region, and wherein the X direction sensing line is disposed at the first and third regions, and the Y direction sensing line is disposed at the second region.

5. The device according to claim 4, wherein the X direction sensing line in the first region is electrically connected to the X direction sensing line in the third region.

6. The device according to claim 5, wherein the touch sensing unit further includes a connection line in the second region for electrical connection of the X direction sensing line in the first region and the X direction sensing line in the third region.

7. The device according to claim 5, wherein the common electrode has an island shape in each of the first to third regions, and the X and Y direction sensing lines contacts the common electrode.

8. The device according to claim 1, wherein the array substrate further includes:

- gate lines on the first substrate;
- an interlayer insulating layer on the gate lines;
- data lines on the interlayer insulating layer and crossing each other to define a plurality of pixel regions, wherein a plurality of pixel regions form each of first to third regions;
- a thin film transistor in each pixel region and connected to the gate and data lines;
- a first passivation layer on the data lines and the thin film transistor, wherein the common electrode is disposed on the first passivation layer and has an island shape in each of the first to third regions; and
- a second passivation layer over the common electrode, wherein the first and second passivation layers have a drain contact hole exposing a portion of the thin film transistor,

wherein the pixel electrode is disposed on the second passivation layer and contacts the portion of the thin film transistor through the drain contact hole

9. The device according to claim 8, wherein the pixel electrode has at least one opening to generate a fringe field with the common electrode.

10. The device according to claim 8, wherein the touch sensing unit includes:

- a connection line in the second region under the interlayer insulating layer;
- an X direction sensing line disposed on the common electrode in the first and third regions and overlapping the gate line;
- a Y direction sensing line disposed on the common electrode in the second region and overlapping the data line; and

first and second connection patterns on the second passivation layer,

wherein the second passivation layer has a first contact hole exposing an end of the X direction sensing line in the first region and a second contact hole exposing an end of the X direction sensing line in the third region, wherein the first and second passivation layers have a drain contact hole exposing a portion of the thin film transistor, and the first and second passivation layers and the interlayer insulating layer have third and fourth contact holes respectively exposing both ends of the connection line, wherein one end of the first connection pattern contacts the X direction sensing line in the first region through the first contact hole, and the other end of the first connection pattern contacts one end of the connection line through the third contact hole, and

wherein one end of the second connection pattern contacts the X direction sensing line in the third region through the second contact hole, and the other end of the second connection pattern contacts the other end of the connection line through the fourth contact hole.

11. The device according to claim 8, wherein the color filter substrate further includes:

- a black matrix corresponding to boundaries of each pixel region; and
- a color filter layer corresponding to the each pixel region.

12. A method of fabricating a touch sensing type liquid crystal display device, comprising:

forming a gate line, a data line, a thin film transistor, a common electrode, a pixel electrode and a touch sensing unit on a first substrate;

forming an anti-static layer on an outer side of a second substrate, the anti-static layer having a sheet resistance of about 10^7 to 10^9 ohms per square (Ω/sq); and

attaching the first and second substrates with a liquid crystal layer interposed between the first and second substrates.

13. The method according to claim 12, wherein the anti-static layer includes zinc-tin-oxide and has a thickness of about 100 to 1000 angstroms.

14. The method according to claim 12, wherein the step of forming the anti-static layer is performed by a sputtering process.

15. The method according to claim 14, wherein the sputtering process is performed under a room temperature or a temperature above 300°C .

16. The method according to claim 12, wherein the step of forming the touch sensing unit includes:

- forming a connection line at the same layer as the gate line;
- forming an X direction sensing line and a Y direction sensing line on the common electrode, the X direction sensing line and the Y direction sensing line respectively overlapping the gate line and the data line, wherein the X direction sensing line is disposed in first and second regions, and the Y direction sensing line is disposed in a third region between the first and second regions; and
- forming first and second connection patterns at the same layer as the pixel electrode,

wherein one end of the first connection pattern is electrically connected to the X direction sensing line in the first region, and the other end of the first connection pattern is electrically connected to the connection line, and wherein one end of the second connection pattern is electrically connected to the X direction sensing line in

the second region, and the other end of the second connection pattern is electrically connected to the connection line.

17. A method of fabricating a touch sensing type liquid crystal display device, comprising:

forming a gate line, a data line, a thin film transistor, a common electrode, a pixel electrode and a touch sensing unit on a first substrate;

attaching a second substrate to the first substrate to form a liquid crystal panel, wherein the liquid crystal panel has a first thickness;

etching an outer side of each of the first and second substrates such that the liquid crystal panel has a second thickness smaller than the first thickness; and

forming an anti-static layer on the outer side of the second substrate, the anti-static layer having a sheet resistance of about 10^7 to 10^9 ohms per square (Ω/sq).

18. The method according to claim **17**, wherein the anti-static layer includes zinc-tin-oxide and has a thickness of about 100 to 1000 angstroms.

19. The method according to claim **17**, wherein the step of forming the anti-static layer is performed by a sputtering process with a target including an inorganic base material and the conductive particles.

20. The method according to claim **19**, wherein the sputtering process is performed under a room temperature or a temperature below 100°C .

21. The method according to claim **17**, wherein the step of forming the touch sensing unit includes:

forming a connection line at the same layer as the gate line; forming an X direction sensing line and a Y direction sensing line on the common electrode, the X direction sensing line and the Y direction sensing line respectively overlapping the gate line and the data line, wherein the X direction sensing line is disposed in first and second regions, and the Y direction sensing line is disposed in a third region between the first and second regions; and forming first and second connection patterns at the same layer as the pixel electrode,

wherein one end of the first connection pattern is electrically connected to the X direction sensing line in the first region, and the other end of the first connection pattern is electrically connected to the connection line, and wherein one end of the second connection pattern is electrically connected to the X direction sensing line in the second region, and the other end of the second connection pattern is electrically connected to the connection line.

* * * * *

专利名称(译)	触摸式液晶显示装置及其制造方法		
公开(公告)号	US20110228189A1	公开(公告)日	2011-09-22
申请号	US13/050816	申请日	2011-03-17
[标]申请(专利权)人(译)	OH KUM MI 安勇SU 南景金 李汉石		
申请(专利权)人(译)	OH KUM-MI 安勇-SU NAM KYOUNG-JIN 李汉硕		
当前申请(专利权)人(译)	LG DISPLAY CO. , LTD.		
[标]发明人	OH KUM MI AN YONG SU NAM KYOUNG JIN LEE HAN SEOK		
发明人	OH, KUM-MI AN, YONG-SU NAM, KYOUNG-JIN LEE, HAN-SEOK		
IPC分类号	G02F1/136 G02F1/1333		
CPC分类号	G02F1/13338 G02F1/134363 G02F1/136286 H01L27/12 G02F2202/22 G06F3/0412 G02F2001/134372		
优先权	1020100024916 2010-03-19 KR		
其他公开文献	US8704962		
外部链接	Espacenet USPTO		

摘要(译)

一种触控式液晶显示装置，包括阵列基板，所述阵列基板包括第一基板，公共电极，像素电极和触摸感应单元；滤色器基板，包括第二基板并面向阵列基板；在第二基板的外侧上的抗静电层，该抗静电层具有约107至109欧姆每平方 (Ω/sq) 的薄层电阻；以及在第一基板和第二基板的内侧之间的液晶层。

