



US 20100007820A1

(19) **United States**(12) **Patent Application Publication**
YOO et al.(10) **Pub. No.: US 2010/0007820 A1**(43) **Pub. Date: Jan. 14, 2010**(54) **LIQUID CRYSTAL DISPLAY DEVICE
INCLUDING A COLD CATHODE
FLUORESCENT LAMP AND CONTAINER
FOR RECEIVING THE SAME**(30) **Foreign Application Priority Data**

Dec. 19, 2001 (KR) 2001-81364

Publication Classification(75) Inventors: **Hyeong-Suk YOO**, Seongnam-si
(KR); **Keun-Woo LEE**,
Hwaseong-gun (KR); **Jong-Dae
PARK**, Seoul (KR); **Jae-Ho JUNG**,
Yongin-si (KR)(51) **Int. Cl.**
G02F 1/1335 (2006.01)
G09F 13/04 (2006.01)(52) **U.S. Cl.** **349/61; 362/97.2**Correspondence Address:
CANTOR COLBURN, LLP
20 Church Street, 22nd Floor
Hartford, CT 06103 (US)(73) Assignee: **Samsung Electronics Co., Ltd.**,
Suwon-si (KR)(21) Appl. No.: **12/565,113**(22) Filed: **Sep. 23, 2009****Related U.S. Application Data**(60) Continuation of application No. 11/136,634, filed on
May 24, 2005, now Pat. No. 7,607,791, which is a
division of application No. 10/277,703, filed on Oct.
22, 2002, now Pat. No. 6,905,224.(57) **ABSTRACT**

Disclosed are a cold cathode fluorescent lamp, a container for receiving the same and a liquid crystal display device having the container. The lamp includes a lamp tube, a first electrode having a first end disposed inside the lamp tube and a second end disposed outside the lamp tube and a second electrode plated on an outer surface of the lamp tube. The cold cathode fluorescent lamp is easily coupled/separated to/from the container having a clip type power-supplying module in a clip-coupling manner. In addition, a shock absorbing member is installed at the clip type power-supplying module so as to absorb an impact applied to the cold cathode fluorescent lamp. A brightness non-uniformity between cold cathode fluorescent lamps can be prevented, a power consumption of the cold cathode fluorescent lamp can be reduced, and an assembling work and productivity are remarkably improved.

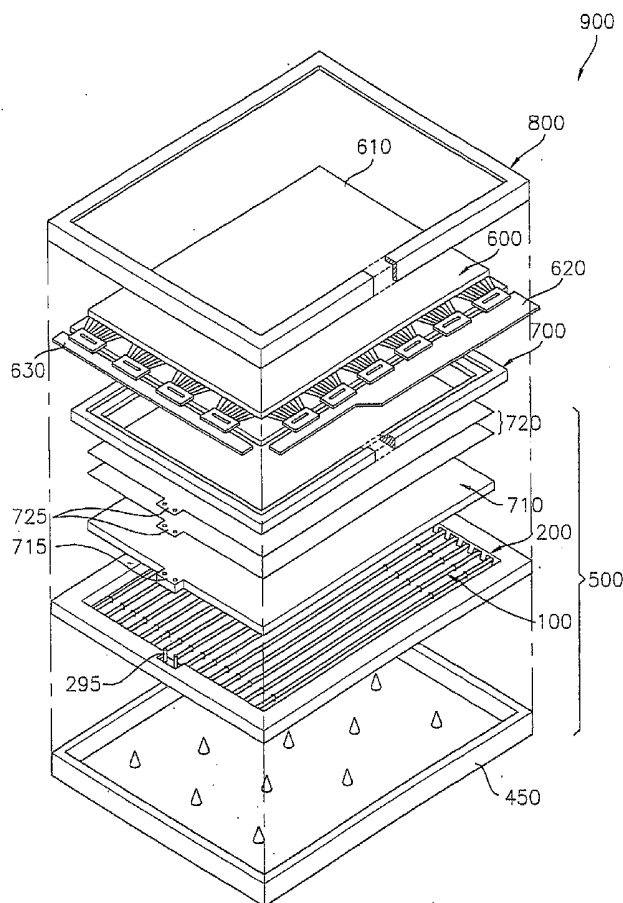


FIG. 1

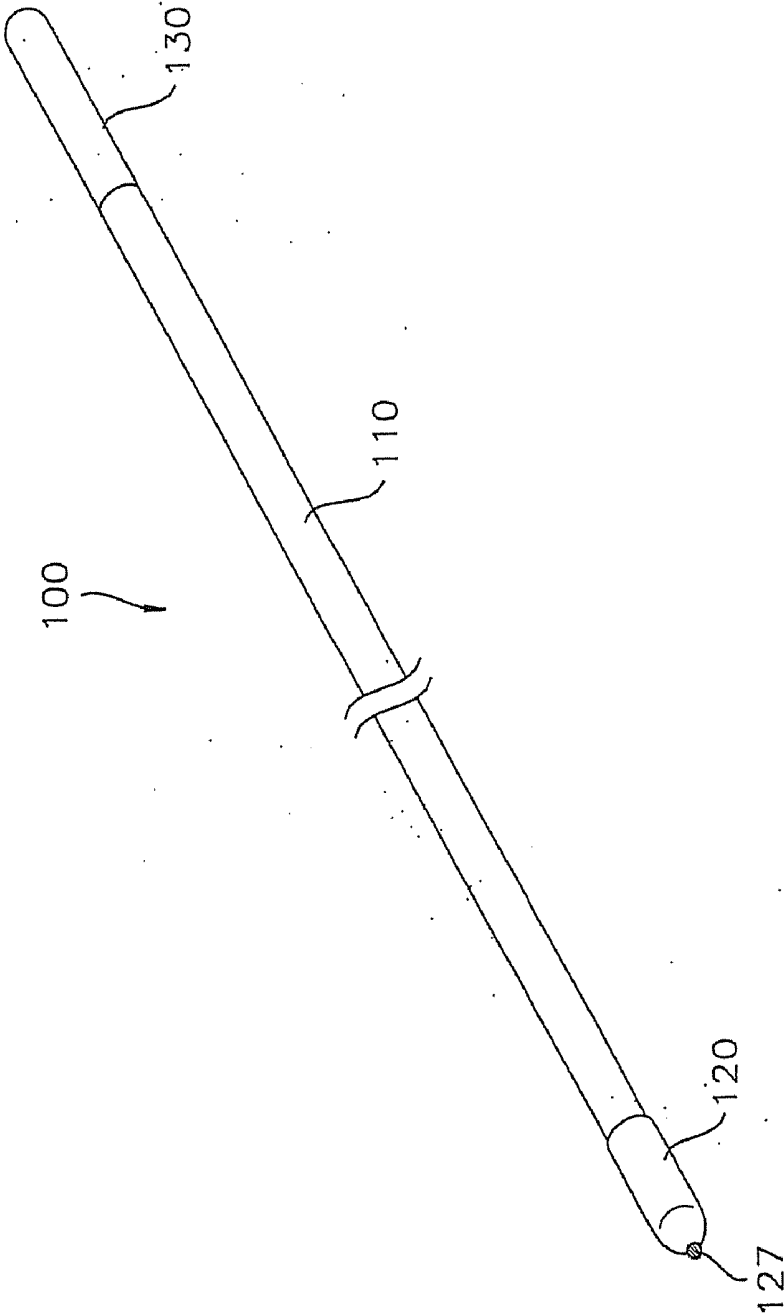


FIG. 2

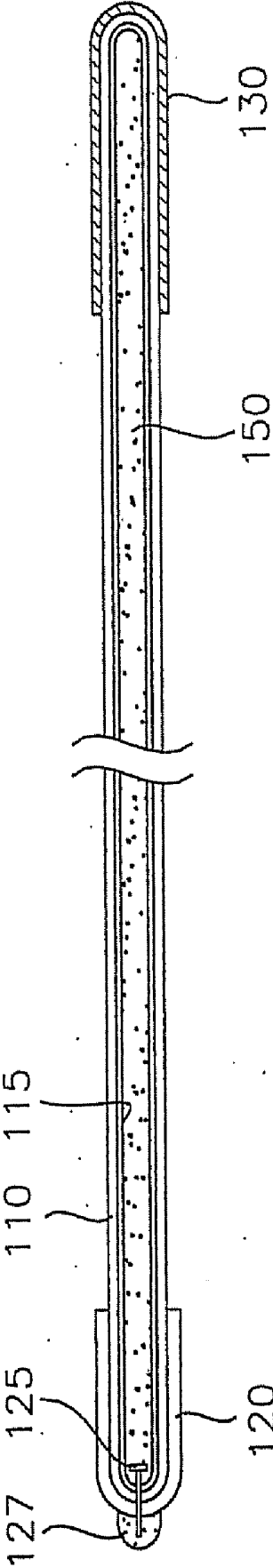


FIG. 3

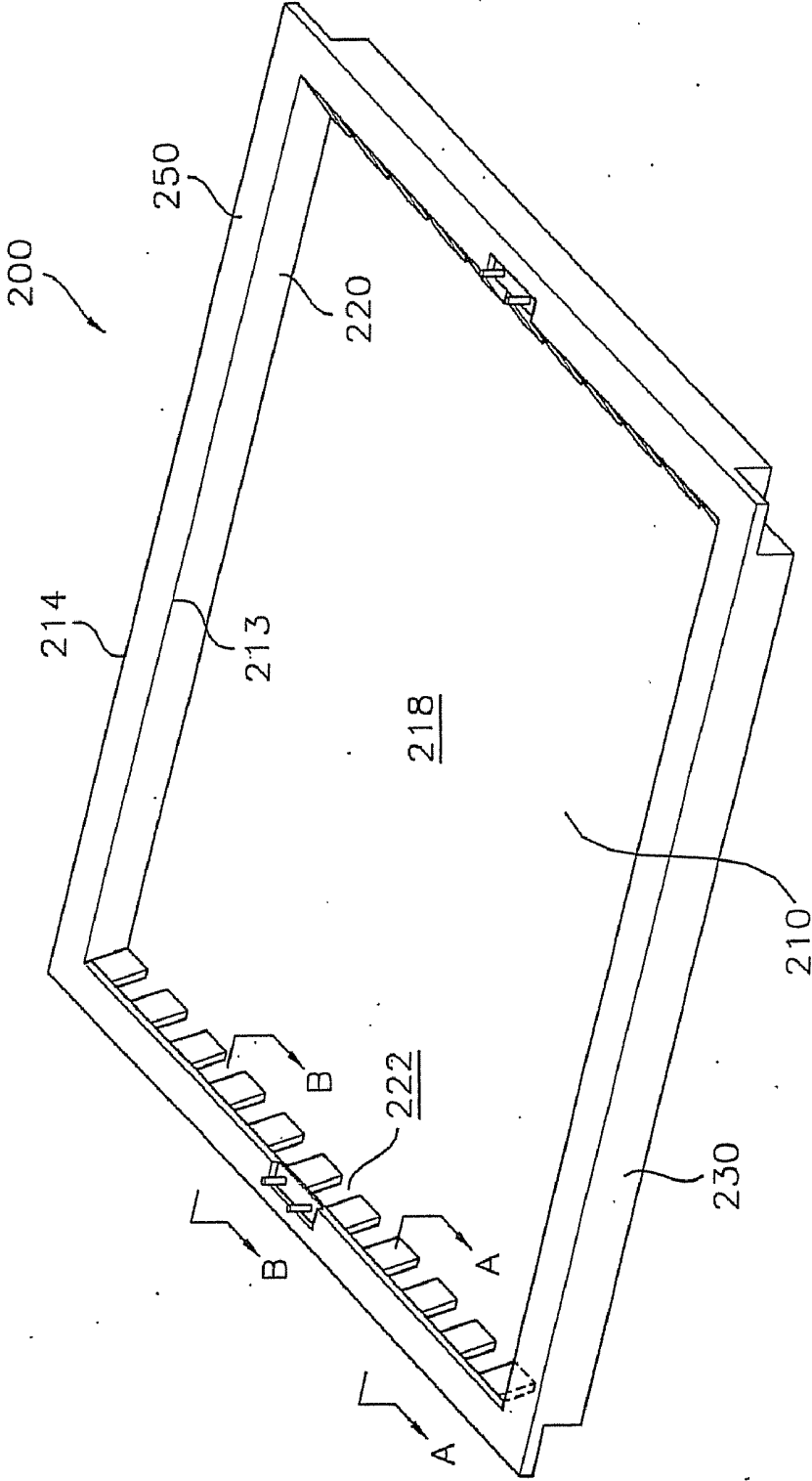


FIG. 4

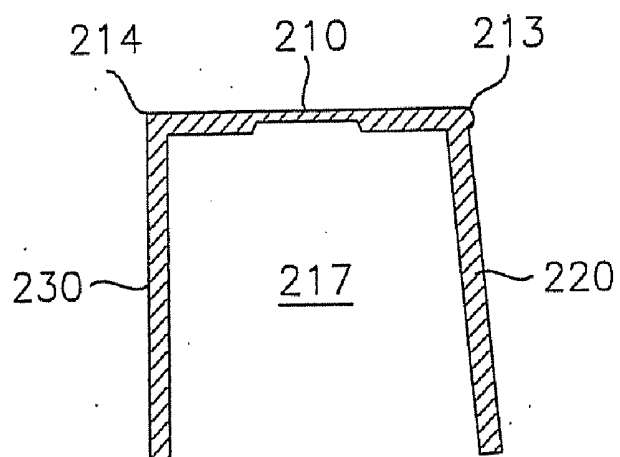


FIG. 5

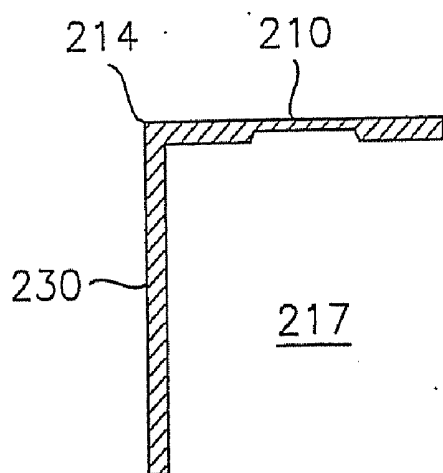


FIG. 6

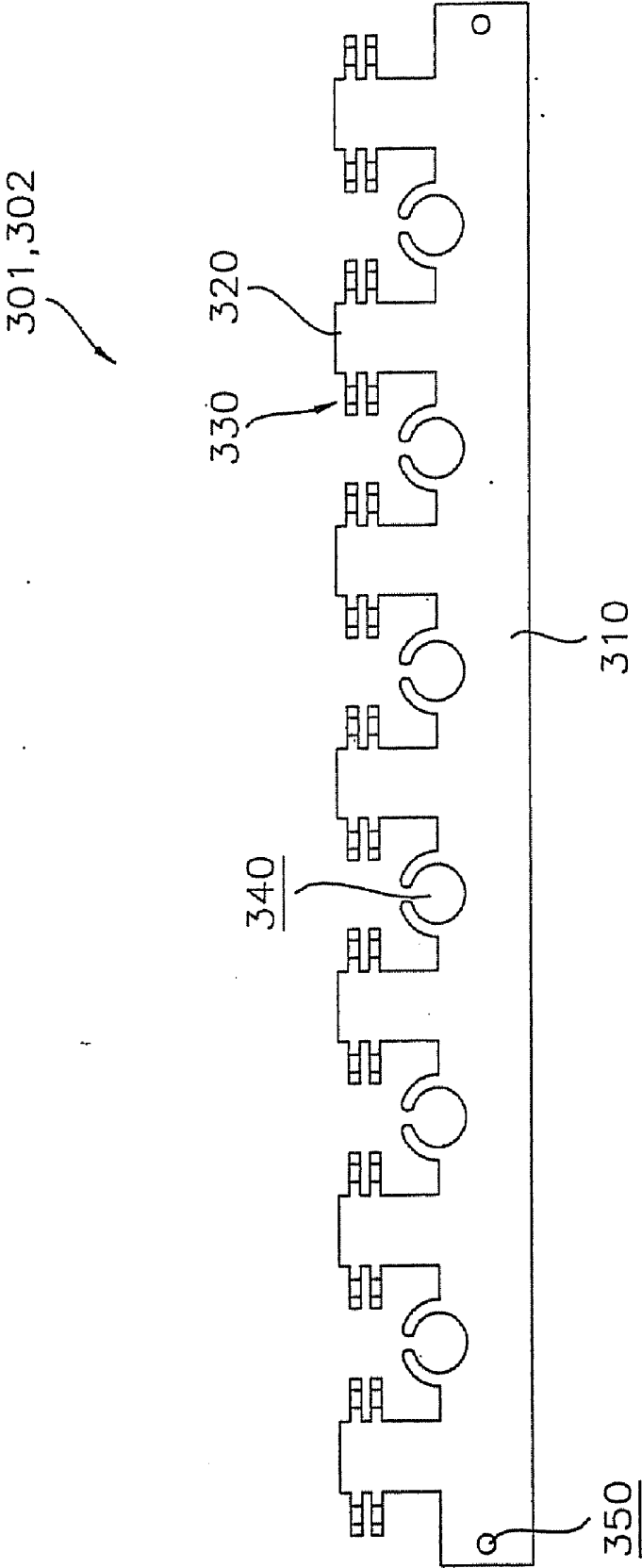
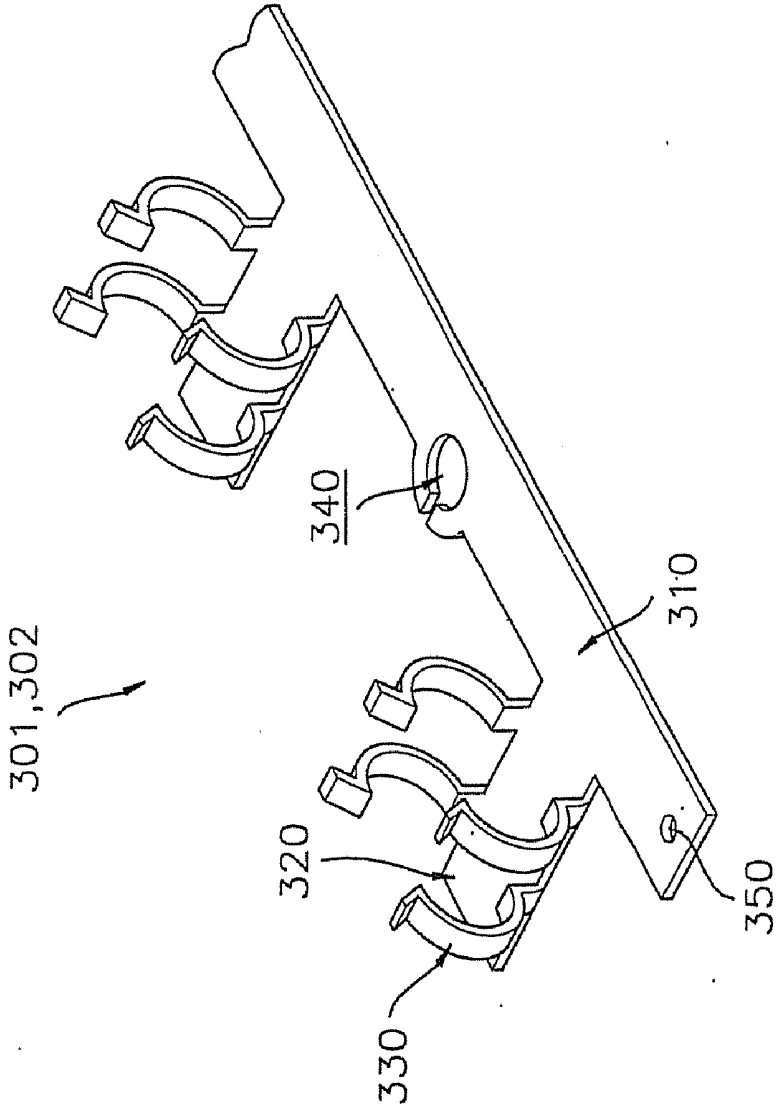


FIG. 7



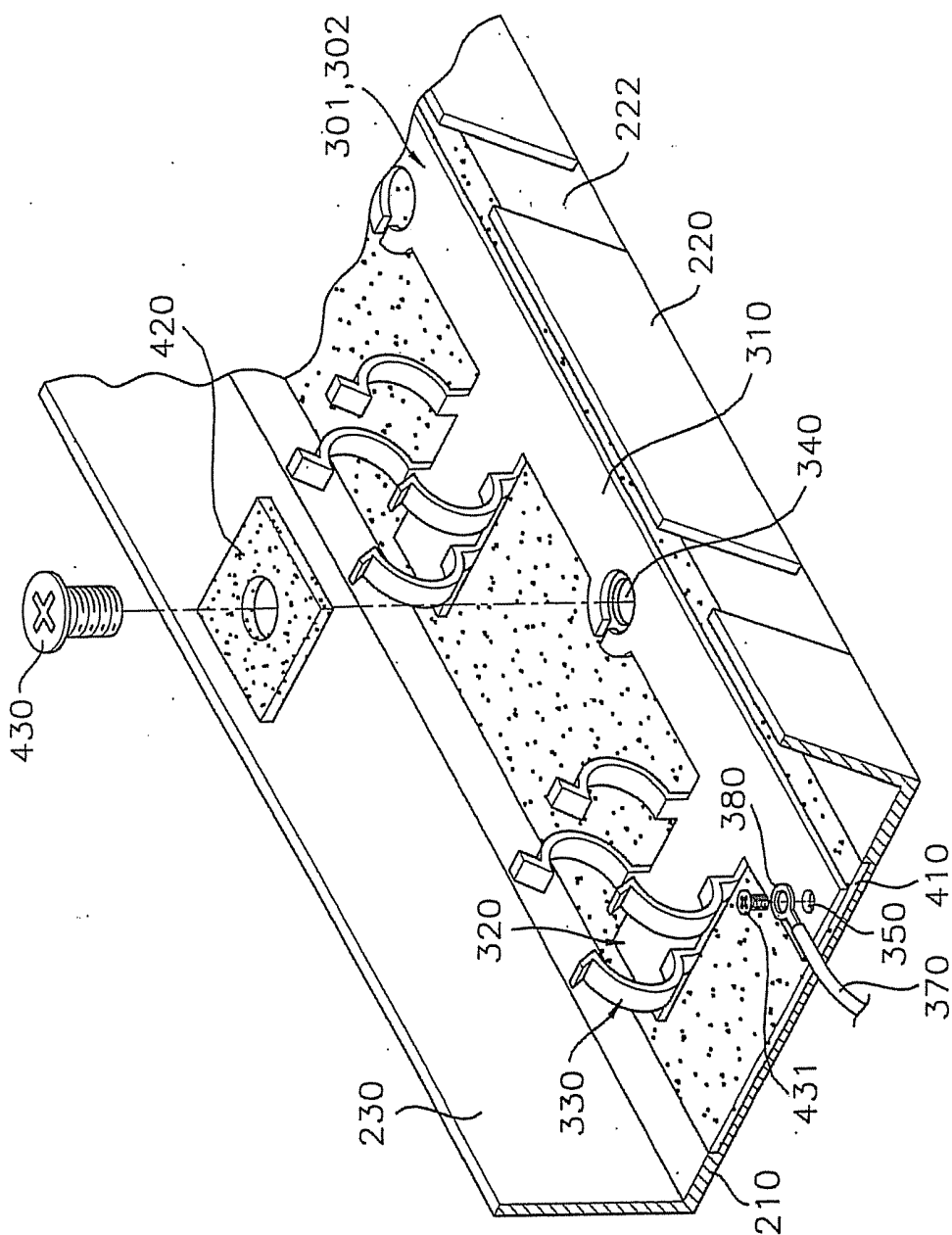
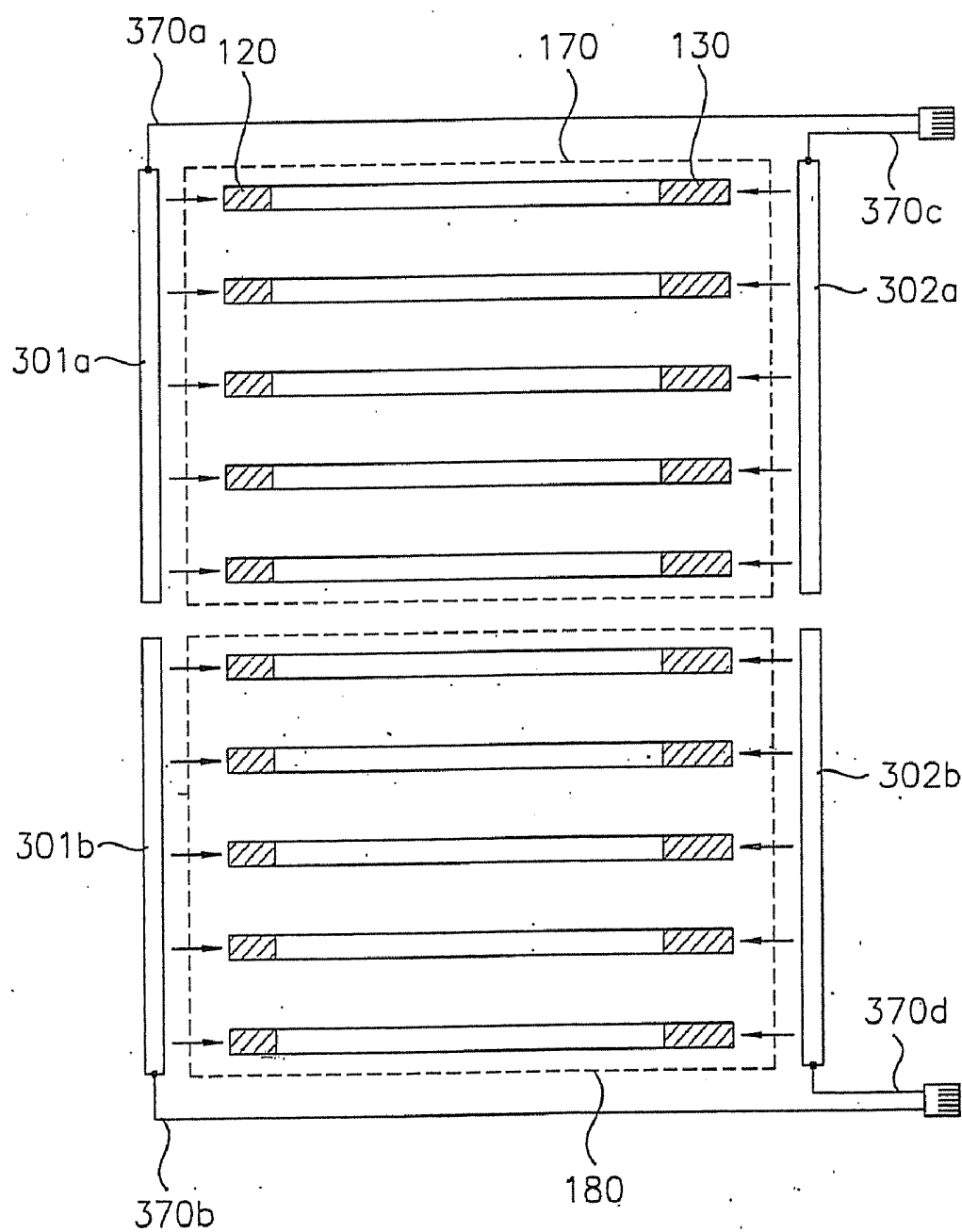
$$\frac{G}{E}$$


FIG. 9



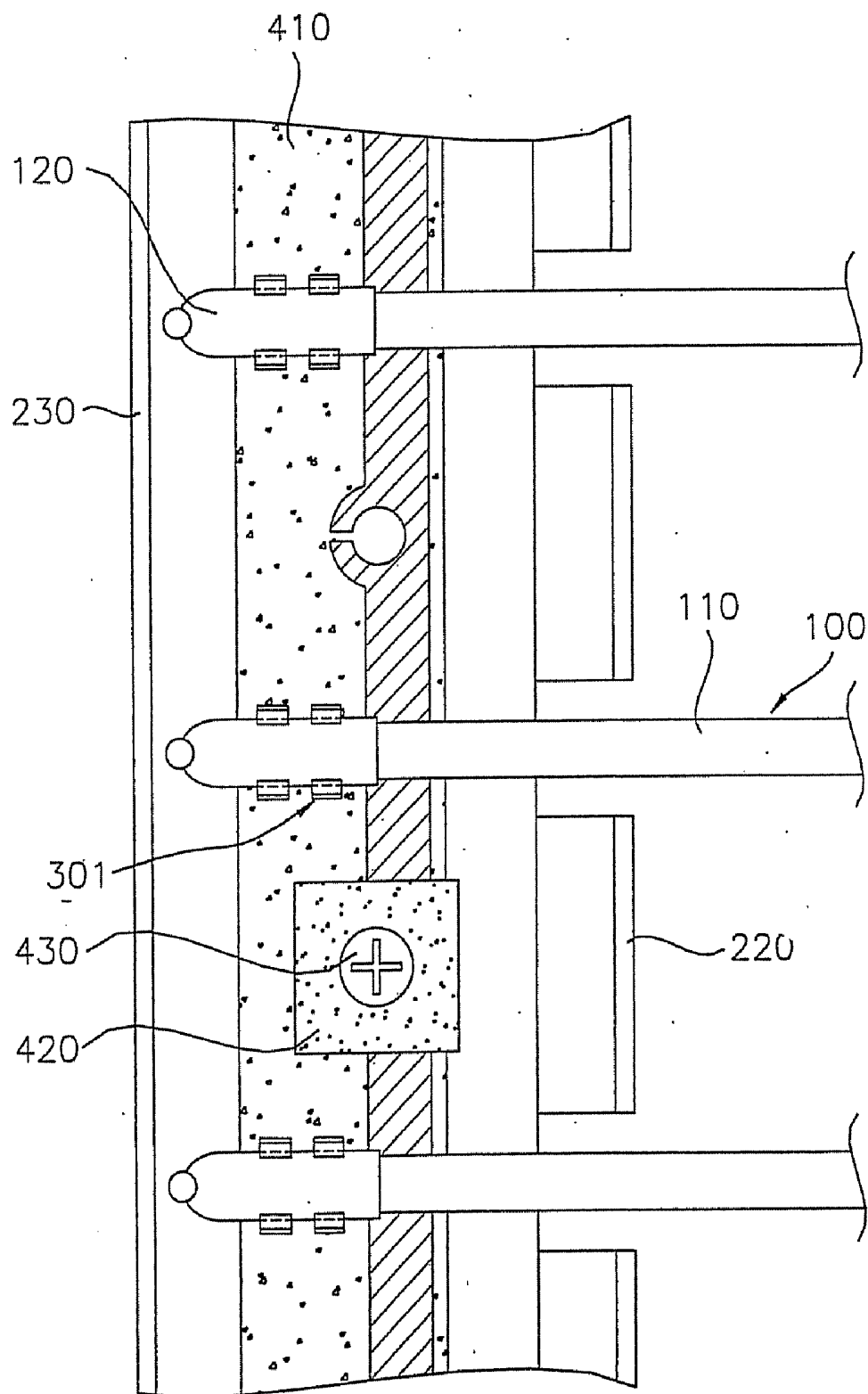


FIG. 11

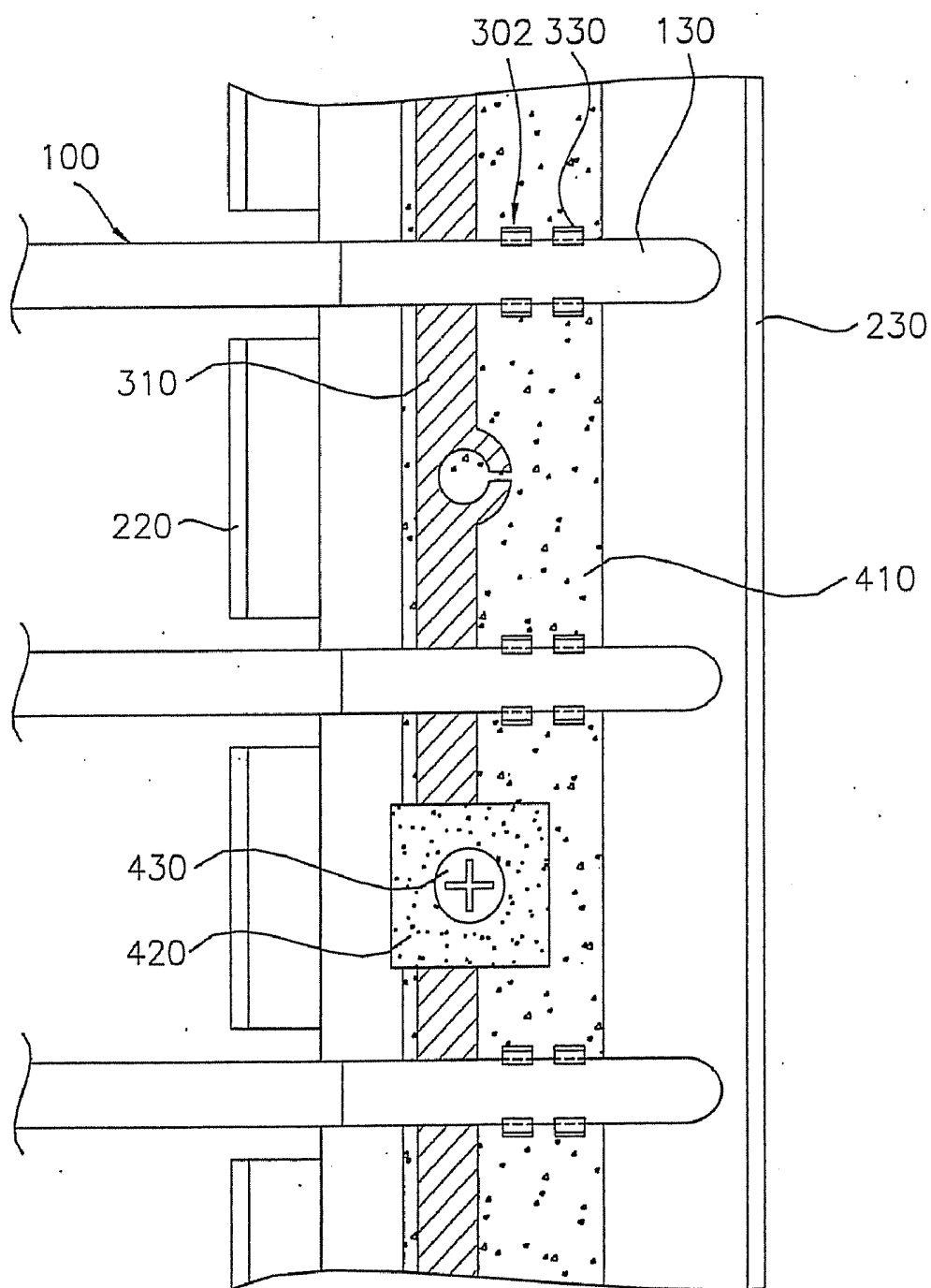


FIG. 12

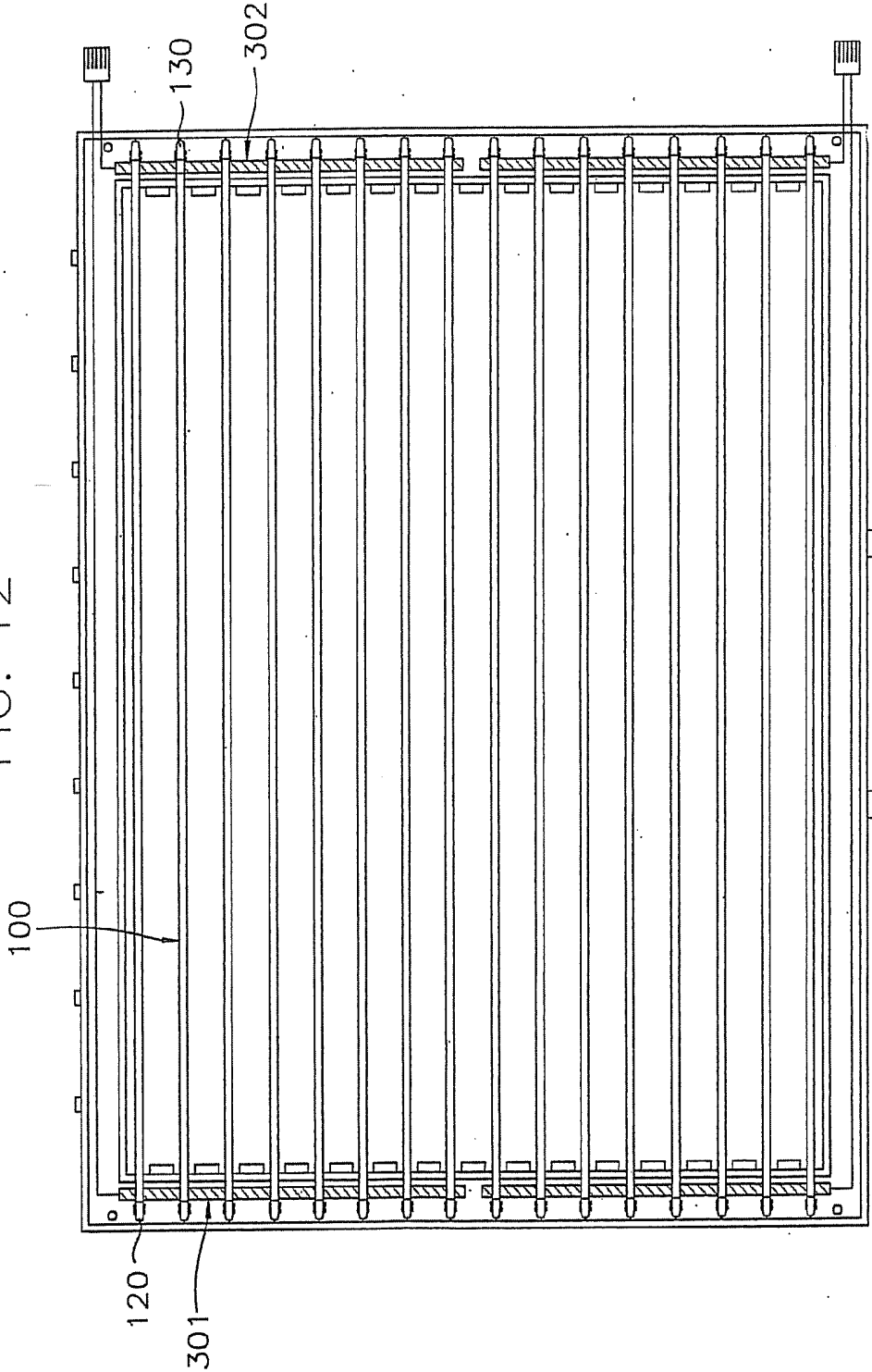


FIG. 13

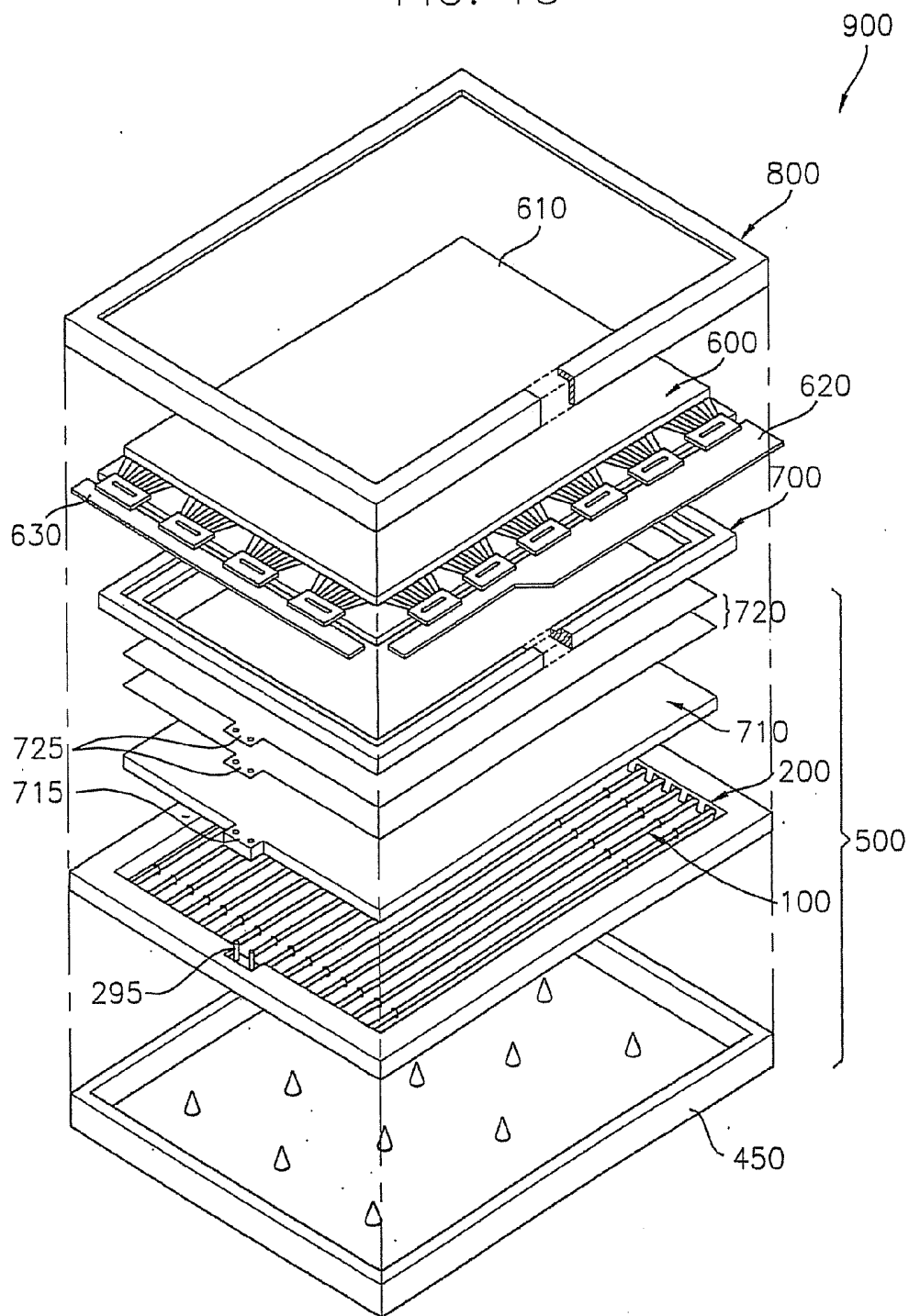


FIG. 14

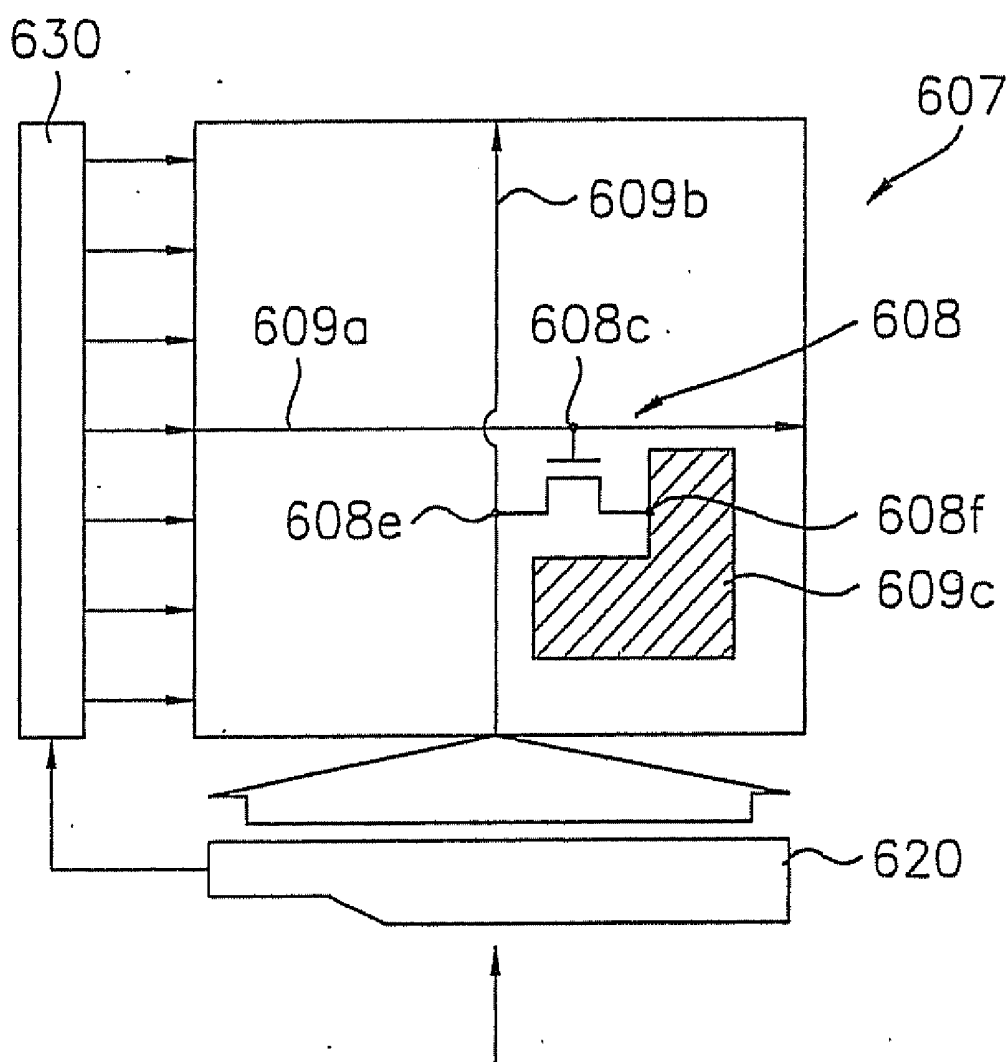
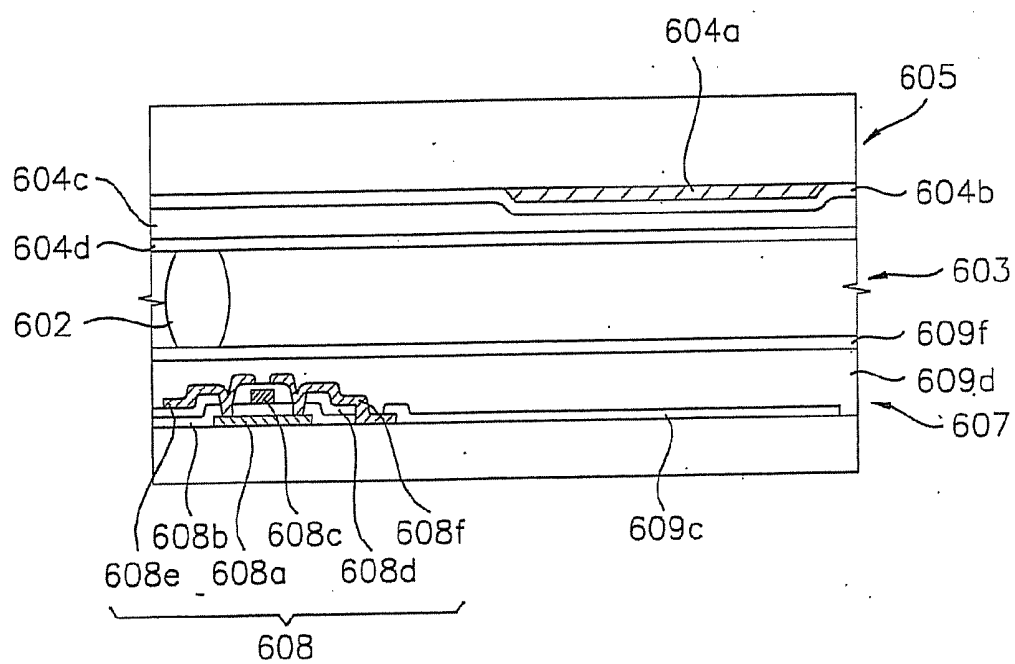


FIG. 15



**LIQUID CRYSTAL DISPLAY DEVICE
INCLUDING A COLD CATHODE
FLUORESCENT LAMP AND CONTAINER
FOR RECEIVING THE SAME**

**CROSS REFERENCE TO RELATED
APPLICATIONS**

[0001] This application is a continuation application of U.S. patent application Ser. No. 11/136,634, filed on May 24, 2005, which is a divisional application of U.S. patent application Ser. No. 10/277,703, filed on Oct. 22, 2002, which claims priority to Korean Patent Application No. 2001-81364, filed on Dec. 19, 2001, and all the benefits accruing therefrom under 35 U.S.C. § 119, the contents of which in their entirety are herein incorporated by.

BACKGROUND OF THE INVENTION

[0002] 1. Field of the Invention

[0003] The present invention relates to a liquid crystal display device, and more particularly to a cold cathode fluorescent lamp capable of preventing a brightness variation generated when plural cathode fluorescent lamps are simultaneously driven by one driving apparatus, and capable of improving an assembling work and a shock resistance, a container for receiving the same and a liquid crystal display device having the container.

[0004] 2. Description of the Related Art

[0005] As semiconductor technologies and electronic technologies are rapidly developed, data processing technologies are correspondingly rapidly developed to allow processing of a great amount of data in a short time.

[0006] Such data processing units output resulted data by processing great amount of data, but do not directly display the resulted data to a user. For this reason, data processed in the data processing unit are displayed through a display device, which acts as an interface between the data processing unit and the user. In this case, data are displayed in the form of letters, images and moving pictures.

[0007] The display device performing the above function includes an analog display device and a digital display device. A cathode ray tube (CRT) display device is such an analog display device, while a liquid crystal display (LCD) device is such a digital display device.

[0008] The CRT type display device performs the display function by precisely controlling the moving direction of electrons, which are discharged from an electronic gun at a high speed, in a Braun tube. Though the CRT type display device can display an image of high quality, the volume and weight thereof are greatly increased as an effective display area is enlarged. Accordingly, the CRT type display device is often called a "analog type display device".

[0009] To the contrary, the LCD contains a liquid crystal layer having a thickness of a micrometer (μm) unit between two transparent substrates. An electric field is applied, per a minute area unit, to the liquid crystal layer from an inner portion of one of transparent substrates, so that a transmittance degree of light is precisely controlled at each part of the liquid crystal layer.

[0010] To realize this, a thin film transistor of a matrix type forms is formed at an inner surface of one of the two opposite substrates. A transparent pixel electrode is formed at an out-

put electrode of the thin film transistor. The pixel electrode is one of two electrodes for applying the electric field to the liquid crystal.

[0011] The second electrode for applying the electric field to the liquid crystal is a transparent common electrode formed at an inner surface of the other of the two opposite substrates. A constant reference voltage is supplied to the common electrode.

[0012] Hereinafter, a method for controlling the light transmittance degree of the liquid crystal will be described.

[0013] Firstly, each thin film transistor is respectively controlled so as to supply a required power into each pixel electrode. At this time, the constant reference voltage is supplied to the common electrode. Accordingly, different electric fields are formed between the pixel electrode and the common electrode, and the alignment of the liquid crystal is precisely varied according to the electric fields. The quantity of light passing through the liquid crystal is also varied according to the variation of the alignment of the liquid crystal. That is, the quantity of the light passing through the liquid crystal is controlled. Then, the light passes through a color pixel (or color filter) formed at a rear side of the common electrode. Accordingly, a full-color display is achieved.

[0014] The above-mentioned CRT type display device can display information in any place even where the light does not exist. However, the liquid crystal display device cannot display information in the place where the light is insufficient or does not exist.

[0015] This means that the liquid crystal display device is dependent upon the light. For this reason, the light is necessarily required in order to display information in the liquid crystal display device. The light may be an external light, such as sunlight and an illumination light, or the light may be an artificial light created by consuming an electric energy charged in the liquid crystal display device.

[0016] When the external light is used, power consumption will be reduced, but information cannot be displayed in the place where the external light does not exist. For this reason, recently, the display of information is carried out using an artificial light, which is created by consuming an electric energy charged in the liquid crystal display device.

[0017] A cold cathode fluorescent lamp is mainly used for creating the artificial light, although various kinds of lamps can be used as a device for creating the artificial light. The cold cathode fluorescent lamp has a low heating value, accordingly it prevents the liquid crystal from being liquefied. Also, the cold cathode fluorescent lamp has low power consumption and a long life span.

[0018] However, as the effective display area of the liquid crystal display device is enlarged, it is difficult to achieve the required brightness by using only one cold cathode fluorescent lamp. Accordingly, at least two cold cathode fluorescent lamps are adopted in, for example, a middle or large sized notebook computer, monitor and HDTV.

[0019] However, if a plurality of cold cathode fluorescent lamps is used, there are various problems not expected when using only one cold cathode fluorescent lamp.

[0020] Particularly, the problems frequently arise when a plurality of cold cathode fluorescent lamps are connected in parallel to one power supply device.

[0021] When a plurality of cold cathode fluorescent lamps is connected in parallel to one power supply device, a cold cathode fluorescent lamp having a relatively better current-flow characteristic is gradually brightened, and a cold cathode

fluorescent lamp having a relatively worse current-flow characteristic is gradually darkened.

[0022] Accordingly, it is required to develop a technique for solving the nonuniform brightness problem generated when plural cold cathode fluorescent lamps are connected in parallel to one power supply device.

SUMMARY OF THE INVENTION

[0023] The present invention provides a cold cathode fluorescent lamp capable of preventing a brightness variation even when plural lamps are connected to one power supply device in parallel and lowering a power consumption.

[0024] The present invention provides a container, which facilitates an assembling work of the cold cathode fluorescent lamp, protects the cold cathode fluorescent lamp from being damaged by an external impact, and allows plural cold cathode fluorescent lamps to be simultaneously driven.

[0025] The present invention also provides a liquid crystal display device capable of reducing a brightness variation in an effective display area, lowering a power consumption required for displaying information, and saving an assembling time, thereby remarkably improving the quality of display.

[0026] In one aspect, there is provided a lamp comprising a lamp tube including a gas and a fluorescent material for generating a light, a first electrode extending from an exterior of the lamp tube into an interior of the lamp tube, an electrode socket connected to the first electrode and surrounding a portion of an outer surface of the lamp tube, and a second electrode formed at the outer surface of the lamp tube apart from the first electrode.

[0027] In another aspect, there is provided a container for receiving a plurality of lamps each including lamp tube and first and second conductive members, the container comprising a container body having a frame shape for exposing each lamp tube of the plurality of lamps and for covering the first and second conductive members of the plurality of lamps, and a clip type power-supplying means for fixing the first and second conductive members to the container body in a clip-coupling

manner, and for supplying a power to the first and second conductive members. In still another

[0028] aspect, there is provided a liquid crystal display device comprising a backlight assembly including a lamp for generating a light and having a lamp and first and second conductive members, a container body for exposing the lamp tube of the lamp while covering the first and second conductive members, a power-supplying means supplying a power to the first and second conductive members and fixing the first and second conductive members to the container body, and light uniformity improving means for improving a uniformity of the light, and a liquid crystal display panel assembly coupled with the backlight assembly so as to display a picture by controlling a transmittance of the light passing through the light uniformity improving means.

BRIEF DESCRIPTION OF THE DRAWINGS

[0029] The above and other advantages of the present invention will become more apparent by describing in detail exemplary embodiments thereof with reference to the attached drawings in which:

[0030] FIG. 1 is a partially cut perspective view of a cold cathode fluorescent lamp according to one embodiment of the present invention;

[0031] FIG. 2 is a sectional view showing a cold cathode fluorescent lamp according to one embodiment of the present invention;

[0032] FIG. 3 is a sectional view showing a container of a cold cathode fluorescent lamp according to one embodiment of the present invention;

[0033] FIG. 4 is a sectional view taken along the line A-A in FIG. 3;

[0034] FIG. 5 is a sectional view taken along the line B-B in FIG. 3;

[0035] FIG. 6 is a developed view of a clip type power-supplying module according to one embodiment of the present invention;

[0036] FIG. 7 is a perspective view of a clip type power-supplying module according to one embodiment of the present invention, which is assembled based on the developed view of the clip type power-supplying module shown in FIG. 6;

[0037] FIG. 8 is a partially cut perspective view of the clip type power-supplying module assembled with a container;

[0038] FIG. 9 is a schematic view showing a plurality of cold cathode fluorescent lamps according to another embodiment of the present invention;

[0039] FIG. 10 is a perspective view showing an electrode socket part of a cold cathode fluorescent lamp coupled to a container;

[0040] FIG. 11 is a perspective view showing a second electrode part of the cold cathode fluorescent lamp coupled to the container;

[0041] FIG. 12 is a bottom view showing a backlight assembly according to still another embodiment of the present invention;

[0042] FIG. 13 is an exploded perspective view showing a structure of a liquid crystal display device according to still another embodiment of the present invention;

[0043] FIG. 14 is a schematic view showing a structure of a TFT substrate according to still another embodiment of the present invention; and

[0044] FIG. 15 is a sectional view showing an interior of a liquid crystal display panel assembly according to still another embodiment of the present invention.

DETAILED DESCRIPTION OF THE INVENTION

[0045] Hereinafter, the structure and effect of a cold cathode fluorescent lamp, a container for receiving the same and a liquid crystal display device having the container according to one embodiment of the present invention will be described with reference to accompanying drawings. Referring to FIG. 1, the cold cathode fluorescent lamp is shown with a reference numeral 100. The cold cathode fluorescent lamp 100 forms a part of a liquid crystal display device 900 (shown in FIG. 13) and generates a light required for displaying information.

[0046] Referring to FIGS. 1 and 2, the cold cathode fluorescent lamp 100 includes a lamp tube 110, a first electrode 125 (shown in FIG. 2), an electrode socket 120, and a second electrode 130.

[0047] For example, the lamp tube 110 is a transparent tube having predetermined thickness and length. A fluorescent material 115 is deposited at an inner wall of the lamp tube 110. The fluorescent material 115 converts a non-visible ray into a visible ray so as to allow a user to recognize the light. In

addition, a gas 150 is filled in the lamp tube 110. The gas 150 generates non-visible ray to stimulate the fluorescent material to generate the visible ray.

[0048] As shown in FIG. 2, the lamp tube 110 is coupled with the first electrode 125, the electrode socket 120 and the second electrode 130. The arrangement of the first and second electrodes 125 and 130 is very important.

[0049] The first electrode 125 is installed at a predetermined portion of the lamp tube 110, for example, at one end portion of the lamp tube 110. One part of the first electrode 125 is positioned at an exterior of the lamp tube 110 and the other

part of the first electrode 125 is positioned at an interior of the lamp tube 110. The part of the

[0050] first electrode 125 protruded out of the lamp tube 110 has a tiny size, so that it is difficult to supply a power thereto and to assemble the part to other device. For this reason, the electrode socket 120 is coupled with the first electrode 125 in order to assemble the part to other device. The electrode socket 120 enlarges an area coupled with an external power-supplying member.

[0051] More specifically, the electrode socket 120 has a cap shape coupled to an end portion of the lamp tube 110. The end portion of the lamp tube 110 and a

portion of a circumferential portion of the lamp tube 110 extended from the end

portion are covered with the electrode socket 120.

[0052] A perforation hole is formed in the electrode socket 120. The first electrode 125 is electrically connected to the electrode socket 120 through the perforation hole. Then, the electrode socket 120 and the first electrode 125 are welded to each other by using a solder 127.

[0053] In addition, as shown in FIGS. 1 and 2, the second electrode 130 is arranged on the lamp tube 110 spaced apart from the first electrode 125. The second electrode 130 is disposed on a surface of the lamp tube 110 by using an electroless plating technique such that it has a surface area larger than that of the electrode socket 120.

[0054] According to the electroless plating technique, metal ions included in an aqueous solution are reduced into metal molecules by electrons supplied from a reducing agent, thereby forming a minute metal layer on the surface of the metal tube 110. The electroless plating technique has an advantage that it can be applied to not only a metallic material, but also a non-metallic material.

[0055] The cold cathode fluorescent lamp 100 having the above structure according to one embodiment of the present invention can reduce a power consumption and improve a brightness uniformity.

[0056] The cold cathode fluorescent lamp 100 is accommodated in a container 200 shown in FIG. 3.

[0057] The container 200 has a structure adapted for simultaneously receiving plural cold cathode fluorescent lamps 100 and adapted for supplying a driving power from an exterior into the cold cathode fluorescent lamps 100. The container 200 includes a container body and a clip type power-supplying module.

[0058] FIG. 3 is a perspective view of the container body 250 of the container 200. The container body 250 is a body for fixing the cold cathode fluorescent lamp 100 thereto. Specifically, the container body 250 covers the electrode sockets 120 and the second electrode 130 of the cold cathode fluorescent lamp 100, and exposes the lamp tube 110 to the exterior.

[0059] Hereinafter, the structure of the container body 250 of the container 200 will be described with reference to FIGS. 3 to 5.

[0060] Referring to FIGS. 3 to 4, the container body 250 includes a first side 210, which is a base side, a second side 220, and a third side 230. The third side 230 is formed optionally.

[0061] The first side 210 has a frame shape including a rectangular inner edge 213 and a rectangular outer edge 214. The second side 220 is extended along the inner edge 213 of the first side to have a predetermined height. In addition, the third side 230 is extended along the outer edge 214 of the first side 210. The second and third sides 220 and 230 are perpendicular to the first side 210.

[0062] The electrode socket 120 and the second electrode 130 of the cold cathode fluorescent lamp 100 are positioned in a space 217 defined by the first and second sides 210 and 220. The lamp tube 110 of the cold cathode fluorescent lamp 100 is positioned at a space 218 surrounded by the second side 220.

[0063] In order to place the electrode socket 120 and the second electrode 130 in the space 217 defined by the first and second sides 210 and 220, a portion of the second side 220 is removed to form an opening 222. As shown in FIG. 3, openings 222 are formed on opposing surfaces of the second side 220. The number of the openings 222 is identical to the number of the cold cathode fluorescent lamps 100 shown in FIGS. 1 and 2.

[0064] On the other hand, the clip type power-supplying modules are installed on the first side 210 inside the space 217. The clip type power-supplying modules are shown in FIGS. 6 to 8 with reference numerals 301 and 302.

[0065] The clip type power-supplying modules 301 and 302 allow the cold cathode fluorescent lamp 100 to be easily coupled or separated from the container 200.

[0066] The clip type power-supplying modules 301 and 302 apply an electric power to the electrode socket 120 and the second electrode 130 of the cold cathode fluorescent lamp 100.

[0067] The clip type power-supplying modules 301 and 302 include a conductive base body 310, a clip body section 320 and a clip section 330.

[0068] For example, the conductive base body 310 has a plate shape having a thin thickness, a narrow width and a long length. As shown in FIG. 8, the conductive base body 310 is installed at the first side 210 of the container body 250 in a direction perpendicular to the extending direction of the cold cathode fluorescent lamp 100.

[0069] The clip body sections 320 are protruded from the conductive base body

310 and spaced from each other by a predetermined interval, which is identical to

a distance between the cold cathode fluorescent lamps 100. The clip body

sections 320 are protruded in a direction identical to the disposed direction of the

cold cathode fluorescent lamp 100, and overlapped with the electrode socket 120

and the second electrode 130 of the cold cathode fluorescent lamp 100. Then, at least one clip

[0070] section 330 is protruded from the clip body section 320 so as to grip the electrode socket 120 and the second electrode 130 of the cold cathode fluorescent lamp 100.

According to one embodiment of the present invention, two separated clip sections 330 are extended from both sides of each clip body section 320, and are bendable so as to grip the electrode socket 120 and the second electrode 130 of the cold cathode fluorescent lamp 100.

[0071] The conductive base body 310, the clip body sections 320 and the clip sections 330 are made of conductive material for fixing the electrode socket 120 and the second electrode 130 of the cold cathode fluorescent lamp 100, and allowing the power to be supplied into the cold cathode fluorescent lamp 100 from the exterior.

[0072] The conductive base body 310 is coupled to the first side 210 of the container body 250, for example, through a screw 430. The conductive base body 310 has a coupling section 340 between the clip body sections 320, to which the screw 430 is coupled. The conductive base body 310 may not have the coupling section 340 between every two adjacent clip body sections 320.

[0073] As shown in FIG. 8, a power supply line 370 is connected to the conductive base body 310 coupled with the electrode socket 120 and the second electrode 130 of the cold cathode fluorescent lamp 100. A conductive coupling terminal 380 having an annular shape is installed at an end of the power supply line 370, and a coupling hole 350 is formed in the conductive base body 310. The coupling terminal 380 of the power supply line 370 is securely coupled to the coupling hole 350 of the conductive base body 310, for example, by means of a screw 431.

[0074] Referring to FIG. 9, a plurality of cold cathode fluorescent lamps 100 are divided into at least two groups. Two groups of the cold cathode fluorescent lamps 100 are represented by the reference numerals 170 and 180, respectively.

[0075] First clip type power-supplying modules 301a and 301b are coupled to electrode sockets 120 of the lamp groups 170 and 180, and second clip type power-supplying modules 302a and 302b are connected to second electrodes 130 of the lamp groups 170 and 180. The number of each of the first and second clip type power-supplying modules is the same as the number of lamp groups.

[0076] Signal lines 370a, 370b, 370c and 370d are connected to first and second clip type power-supplying modules 301a, 301b, 302a and 302b and are disposed along an inner edge of the container body 250 and withdrawn out of the container body 250.

[0077] The container 200 may have a shock absorbing member to absorb an external impact not to be transferred to the cold cathode fluorescent lamp 100. As shown in FIGS. 8, 10 and 11, the container 200 includes a first shock absorbing member 410 and second shock absorbing member 420 at the container body 250.

[0078] The first shock absorbing member 410, for example, has a hexagonal plate shape. The first shock absorbing member 410 is made of a material which is able to absorb an impact applied thereto. For example, rubber can be used for this purpose.

[0079] Referring again to FIGS. 8, 10 and 11, the first shock absorbing member 410 is positioned between the clip type power-supplying modules 301 and 302 and the first side 210. The first shock absorbing member 410 is coupled to the container body 250 when the first side 210 is coupled to the clip type power-supplying modules 301 and 302.

[0080] The shock absorbing member 410 absorbs the external impact so as to prevent the cold cathode fluorescent lamp 100 from the external impact.

[0081] As shown in FIGS. 8, 10 and 11, the second shock absorbing member 420 can be placed on a portion of the upper surfaces of the clip type power-supplying modules 301 and 302 and screwed thereon by using the screw 430.

[0082] In one embodiment of the invention, the first shock absorbing member 410 having the hexagonal plate shape is positioned between the first side 210 and the clip type power-supplying modules 301 and 302. Then, the second shock absorbing member 420 is positioned on the upper surfaces of the clip type power-supplying modules 301 and 302. In this state, the first and second shock absorbing members 410 and 420 are screw-coupled by using the screw 430.

[0083] The structure of the cold cathode fluorescent lamp 100 assembled with the container body 250 and the clip type power-supplying modules 301 and 302 is shown in FIG. 12.

[0084] FIG. 13 shows a liquid crystal display device 900 for displaying information by using the container 200 and the cold cathode fluorescent lamp 100 coupled to the container 200.

[0085] The liquid crystal display device 900 mainly includes a backlight assembly 500 and a liquid crystal display panel assembly 600. The liquid crystal display device 900 selectively includes a top chassis 800 and an intermediate container 700 for connecting the backlight assembly 500 to the liquid crystal display panel assembly 600.

[0086] In detail, the liquid crystal display panel assembly 600 has a liquid crystal display panel 610 and driving devices 620 and 630.

[0087] Referring to FIGS. 14 and 15, the liquid crystal display panel 610 includes a color filter substrate 605, a TFT substrate 607 and a liquid crystal 603.

[0088] As shown in FIG. 14, the TFT substrate 607 comprises a transparent substrate, a thin film transistor 608, a gate line 609a, a data line 609b, and a pixel electrode 609c.

[0089] More specifically, the thin film transistor 608 is formed on the transparent substrate in a matrix pattern through a semiconductor thin film process. As shown in FIG. 15, the thin film transistor 608 includes a channel layer 608a, a first insulation layer 608b, a gate electrode 608c, a second insulation layer 608d, a source electrode 608e, and a drain electrode 608f. Specifically, the channel layer 608a formed on the transparent substrate is made of amorphous silicon, and is disposed in a matrix pattern. The channel layer 608a is insulated by the first insulation layer 608b. In addition, the gate electrode 608c made of a metal is formed on a predetermined portion of the first insulation layer 608b corresponding to an upper portion of the channel layer 608a. The channel layer 608a stays in a nonconductive state if the power is not applied to the gate electrode 608c. On the contrary, the channel layer 608a is converted to a conductive state when the power is applied to the gate electrode 608c. In addition, the gate electrode 608c is insulated by the second insulation layer 608d. Contact holes are formed through the second and first insulation layers 608d and 608b so as to expose the channel layer 608a to the exterior.

[0090] Then, the conductive source electrode 608e and the conductive drain electrode 608f are connected to the channel layer 608a via the contact holes, thereby forming the thin film transistor 608.

[0091] Consequently, the data line 609b is connected to the source electrode 608e, the gate line 609a is connected to the gate electrode 608c, and the transparent pixel electrode is connected to the drain electrode 608f. Reference numeral

609d is an orientation layer, and reference numeral **609f** is an orientation groove formed in the orientation layer **609d**.

[0092] In addition, the color filter substrate **605** includes a transparent substrate, an RGB color pixel (or RGB color filter) **604a** and a common electrode **604b**.

[0093] The RGB color pixel **604a** of the color filter substrate and pixel electrodes **609c** of the TFT substrate **607** are opposite each other when they are assembled. The common electrode **604b**, to which a predetermined voltage is applied, is formed over the entire upper surface of the RGB color pixel **604a**.

[0094] Reference numeral **604c** is an orientation layer and reference numeral **604d** is an orientation groove formed in the orientation layer **609d**.

[0095] In order to prevent the liquid crystal **603** from being leaked, sealant **602** is formed on edges of the TFT substrate **607**, and spacers are distributed inner area of the sealant **602**.

[0096] Then, the TFT substrate **607** and the color filter substrate **605** are fixed with respect to each other so as to form a predetermined cell gap therebetween. Next, the liquid crystal is injected into the cell gap formed between the TFT substrate **607** and the color filter substrate **605**.

[0097] The liquid crystal **603**, which is positioned between the pixel electrode **609c** and the common electrode **604b** of each thin film transistor **608**, changes a light transmittance according to an intensity of a power applied to the pixel electrode **609c**.

[0098] In order to control the transmittance of the light passing through the liquid crystal **603**, a gate printed circuit board **630** is coupled to the gate line **609a** through a tape carrier package, and a source printed circuit board **620** is coupled to the data line **609b** through the tape carrier package.

[0099] The liquid crystal display panel assembly **600** having the above structure can control, in a minute area unit, the alignment of the liquid crystal **603** filled in the cell gap of the liquid crystal display panel **610**. However, the liquid crystal display panel assembly **600** cannot display any information.

[0100] The liquid crystal **603** only adjusts the amount of the light transmitted therethrough. Therefore, light is required for displaying information in the liquid crystal display device **900**.

[0101] In addition, the light with a nonuniform brightness is not appropriate for displaying information. If the light with a nonuniform brightness is used for displaying information, a picture displayed on a screen may be split or a part of the screen looks dark and the remaining of the screen looks bright.

[0102] Therefore, the light used in the liquid crystal display device **900** must have a uniform brightness. The backlight assembly **500** for generating the uniform brightness is provided in the liquid crystal display device **900**.

[0103] The backlight assembly **500** includes a back cover **450**, the container **200**, the cold cathode fluorescent lamp **100**, a power supply device for the lamp (not shown), and light uniformity improving modules **710** and **720**.

[0104] As mentioned above with reference to FIGS. 1 and 2, the cold cathode fluorescent lamp **100** includes the lamp tube **110**, the first electrode **125**, the electrode socket **120** and the second electrode **130**.

[0105] The fluorescent layer **115** including a fluorescent material is formed at an inner wall of the lamp tube **110**, and the gas **150** is filled in the lamp tube **110**.

[0106] In addition, a portion of the first electrode **125** is positioned at the interior of the lamp tube **110**, and the

remaining portion of the first electrode **125** is positioned at the exterior of the lamp tube **110**. The remaining portion of the first electrode **125** positioned at the exterior of the lamp tube **110** is coupled to the perforation hole formed in the electrode socket **120**. Then, the first electrode **125** is soldered with the electrode socket **120**.

[0107] The second electrode **130** is formed at the exterior of the lamp tube. The second electrode **130** is formed through the above-mentioned electroless plating technique such that a conductor is coated on a surface of the non-conductor lamp tube **110**.

[0108] The cold cathode fluorescent lamp **100** having the above structure is accommodated in the container **200**.

[0109] As shown in FIG. 8, the container **200** includes the container body **250** and the clip type power-supplying modules **301** and **302**.

[0110] More specifically, the container body **250** has the rectangular frame shape

so that the lamp tube **110** of the cold cathode fluorescent lamp **100** is maximally exposed, and so that the electrode socket **120** and the second electrode **130** are covered with the container body **250**. Plural cold cathode fluorescent lamps **100** are parallelly arranged in the container body **250**.

[0111] The cold cathode fluorescent lamps **100** are coupled to the container body **250** through the clip type power-supplying modules **301** and **302**.

[0112] The clip type power-supplying modules **301** and **302** supply the power to all of the cold cathode fluorescent lamps **100**. Clip body sections **320** and clip sections **330** are formed in the conductive base body **310** so as to grip the electrode socket **120** and the second electrode **130** of the cold cathode fluorescent lamp **100**.

[0113] As shown in FIG. 8, in one embodiment of the present invention, the first shock absorbing member **410** is installed between the conductive base body **310** and the container body **250** so as to absorb the impact applied to the container body **250** before the impact is transferred to the cold cathode fluorescent lamp **100**. In another embodiment of the present invention, the second shock absorbing member **420** can be installed on the upper surface of the conductive base body **310**. In still another embodiment of the present invention, the first shock absorbing members **410** are installed between the conductive base body **310** and the container body **250**, and at the same time the second shock absorbing members **420** are installed on the upper surface of the conductive base body **310**.

[0114] In addition, a power supply line is connected to the conductive base body **310** coupled with the electrode socket **120** and the second electrode **130**. A power supply device (not shown) for the lamp is connected to the power supply line.

Accordingly, the light is generated in a state that the cold cathode fluorescent lamps **100** are fixed to the container body **250**.

[0115] In order to enhance brightness uniformity throughout the cold cathode fluorescent lamps **100**, the light uniformity improving modules **710** and **720** are further installed in the container **200**.

[0116] The light uniformity improving modules **710** and **720** include a diffusing plate **710** and an optical sheet **720**.

[0117] As shown in FIG. 13, coupling protrusions **715** and **725** are protruded from side portions of the diffusing plate **710** and the optical sheet **720**, respectively. Each of coupling protrusions **715** and **725** has two coupling holes.

[0118] The diffusing plate 710 and the optical sheet 720 having the above structure are accommodated in the container 200, in such a manner that the electrode socket 120 and the second electrode 130 of the cold cathode fluorescent lamp 100 are covered with them. Coupling poles 295, which are inserted into the coupling holes 715 and 725 formed in the diffusing plate 710 and the optical sheet 720, are formed at the container 200.

[0119] The backlight assembly 500 manufactured through the above-mentioned process can generate a white light having a uniform brightness distribution. The white light generated from the backlight assembly 500 is supplied to the abovementioned liquid crystal display panel assembly 600. The backlight assembly 500 is assembled with the liquid crystal display panel assembly 600 optionally by interposing the intermediate container 700 therebetween.

[0120] Then, the top chassis 800 protecting the liquid crystal display panel 610 is assembled to the liquid crystal display panel assembly 600, thereby forming the liquid crystal display device.

[0121] According to one embodiment of the present invention, the lamp tube having an inner electrode at one portion thereof and an outer electrode at the other portion thereof is accommodated in the container having the clip type power-supplying modules.

[0122] However, according to another embodiment of the present invention, the cold cathode fluorescent lamp has a lamp tube having two electrodes accommodated therein. In this case, after coupling the electrode socket to both electrodes, the lamp tube is accommodated in the container having the clip type power-supplying modules. The same effect can be achieved in this embodiment when compared with the above-mentioned embodiment.

[0123] In addition, it is possible to provide a cold cathode fluorescent lamp having two electrodes positioned at the exterior of the lamp tube. In this case, the lamp tube with two electrodes positioned at the exterior of the lamp tube is accommodated in the container having the clip type power-supplying modules. The same effect can be achieved in this embodiment when compared with the above-mentioned embodiments.

[0124] As described above, according to the present invention, plural cold cathode fluorescent lamps are connected to one power supply device, so the brightness variation can be prevented, the power consumption can be remarkably reduced, and the assembling steps for the cold cathode fluorescent lamp can be simplified.

[0125] While the present invention has been described in detail with reference to the exemplary embodiments thereof, it should be understood to those skilled in the art that various changes, substitutions and alterations can be made hereto without

departing from the scope of the invention as defined by the appended claims.

What is claimed is:

1. A liquid crystal display device comprising:

a backlight assembly including:

a lamp for generating a light and having a lamp tube and first and second conductive members;

a container body for exposing the lamp tube of the lamp while covering the first and second conductive members;

a power-supplying means for supplying a power to the first and second conductive members and fixing the first and second conductive members to the container body; and

a light uniformity improving means for improving a uniformity of the light; and

a liquid crystal display panel assembly coupled to the backlight assembly so as to display a picture by controlling a transmittance of the light passing through the light uniformity improving means,

wherein the power-supplying means comprises a conductive base body coupled to the container body, a plurality of clip bodies protruded substantially perpendicularly from the conductive base body and a plurality of clip sections protruded from each clip body to be substantially perpendicular to both the clip bodies and the conductive base body, the clip sections being electrically connected to the conductive base body to grip one of the first and second conductive members.

* * * * *

专利名称(译)	液晶显示装置包括冷阴极荧光灯和用于容纳冷阴极荧光灯的容器		
公开(公告)号	US20100007820A1	公开(公告)日	2010-01-14
申请号	US12/565113	申请日	2009-09-23
[标]申请(专利权)人(译)	三星电子株式会社		
申请(专利权)人(译)	SAMSUNG ELECTRONICS CO. , LTD.		
当前申请(专利权)人(译)	三星DISPLAY CO. , LTD.		
[标]发明人	YOO HYEONG SUK LEE KEUN WOO PARK JONG DAE JUNG JAE HO		
发明人	YOO, HYEONG-SUK LEE, KEUN-WOO PARK, JONG-DAE JUNG, JAE-HO		
IPC分类号	G02F1/1335 F21S2/00 F21V19/00 F21Y103/00 G02F1/13357 G09F13/04 H01J65/00 H04N5/64		
CPC分类号	G02F1/133604 H01J65/00 G02F1/133608		
优先权	1020010081364 2001-12-19 KR		
其他公开文献	US8007123		
外部链接	Espacenet USPTO		

摘要(译)

本发明公开了一种冷阴极荧光灯，用于容纳该冷阴极荧光灯的容器和具有该容器的液晶显示装置。该灯包括灯管，第一电极，第一电极具有设置在灯管内部的第一端，第二端设置在灯管外部，第二电极设置在灯管的外表面上。冷阴极荧光灯易于以夹子耦合的方式与具有夹式供电模块的容器耦合/分离。另外，减震构件安装在夹式供电模块上，以吸收施加到冷阴极荧光灯的冲击。可以防止冷阴极荧光灯之间的亮度不均匀，可以降低冷阴极荧光灯的功耗，并且显著改善组装工作和生产率。

