



US007868986B2

(12) **United States Patent**
You

(10) **Patent No.:** **US 7,868,986 B2**
(45) **Date of Patent:** **Jan. 11, 2011**

(54) **LIQUID CRYSTAL DISPLAY HAVING A DRIVER CONTACT STRUCTURE FOR PREVENTING CORROSION OF CONDUCTIVE FILMS**

(75) Inventor: **Chun-Gi You**, Yongin-si (KR)

(73) Assignee: **Samsung Electronics Co., Ltd.**, Suwon-Si (KR)

(*) Notice: Subject to any disclaimer, the term of this patent is extended or adjusted under 35 U.S.C. 154(b) by 18 days.

(21) Appl. No.: **12/353,045**

(22) Filed: **Jan. 13, 2009**

(65) **Prior Publication Data**

US 2009/0179204 A1 Jul. 16, 2009

Related U.S. Application Data

(63) Continuation of application No. 10/986,651, filed on Nov. 12, 2004, now Pat. No. 7,486,367.

(30) **Foreign Application Priority Data**

Nov. 12, 2003 (KR) 10-2003-0079693

(51) **Int. Cl.**

- G02F 1/1333** (2006.01)
- G02F 1/1345** (2006.01)
- G09G 3/30** (2006.01)
- G09G 3/36** (2006.01)
- H01L 27/14** (2006.01)

(52) **U.S. Cl.** **349/148; 349/54; 349/151; 349/152; 345/80; 345/90; 257/72**

(58) **Field of Classification Search** **349/149, 349/54, 151, 152; 345/80, 90; 257/72**

See application file for complete search history.

(56) **References Cited**

U.S. PATENT DOCUMENTS

5,825,449 A	10/1998	Shin	
5,835,177 A *	11/1998	Dohjo et al.	349/147
6,406,946 B1 *	6/2002	Takizawa et al.	438/149
7,486,367 B2 *	2/2009	You	349/149
2002/0051110 A1	5/2002	Kim	
2003/0164919 A1 *	9/2003	Oh et al.	349/149

FOREIGN PATENT DOCUMENTS

JP	09-189924	7/1997
JP	11-258627	9/1999
JP	11-352511	12/1999
JP	2000-137445	5/2000
KR	10-0250853	5/1997

* cited by examiner

Primary Examiner—Mike Qi

(74) *Attorney, Agent, or Firm*—F. Chau & Associates, LLC

(57) **ABSTRACT**

A display panel including first to third conductive films is provided, which includes: a first signal line including a first portion that includes the first conductive film, an intermediate portion that includes at least two of the first to the third conductive films (“intermediate portion films”), and a contact portion that contacts an output terminal of a driving circuit and includes the intermediate portion films except for at least one of the intermediate portion films; a second signal line intersecting the first signal line and including the second conductive film; a switching element connected to the first and the second signal lines; and a pixel electrode connected to the switching element and including the third conductive film.

8 Claims, 8 Drawing Sheets

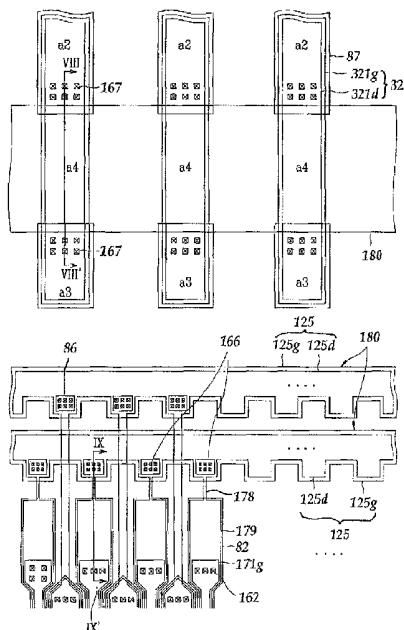


FIG. 1

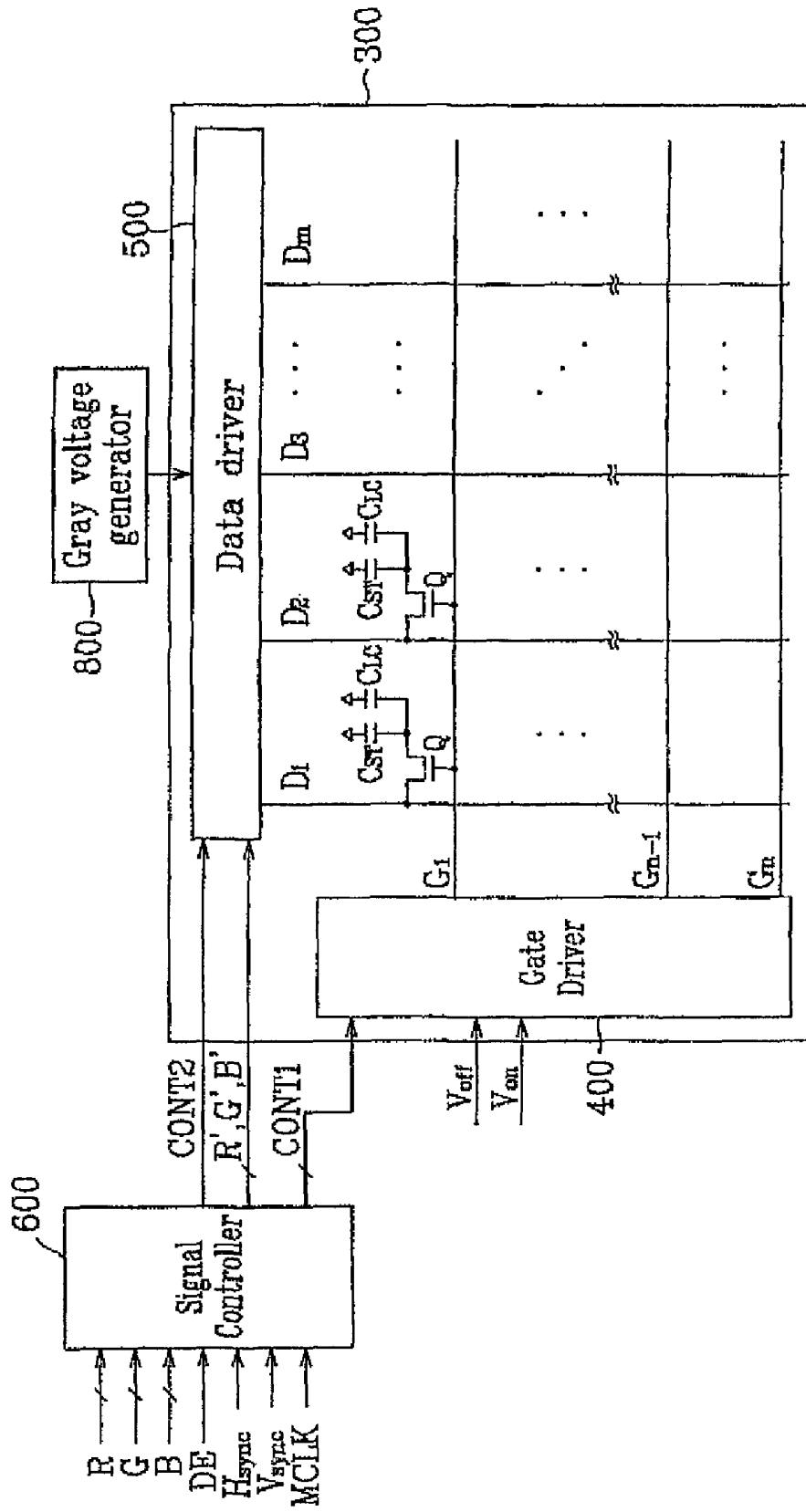


FIG. 2

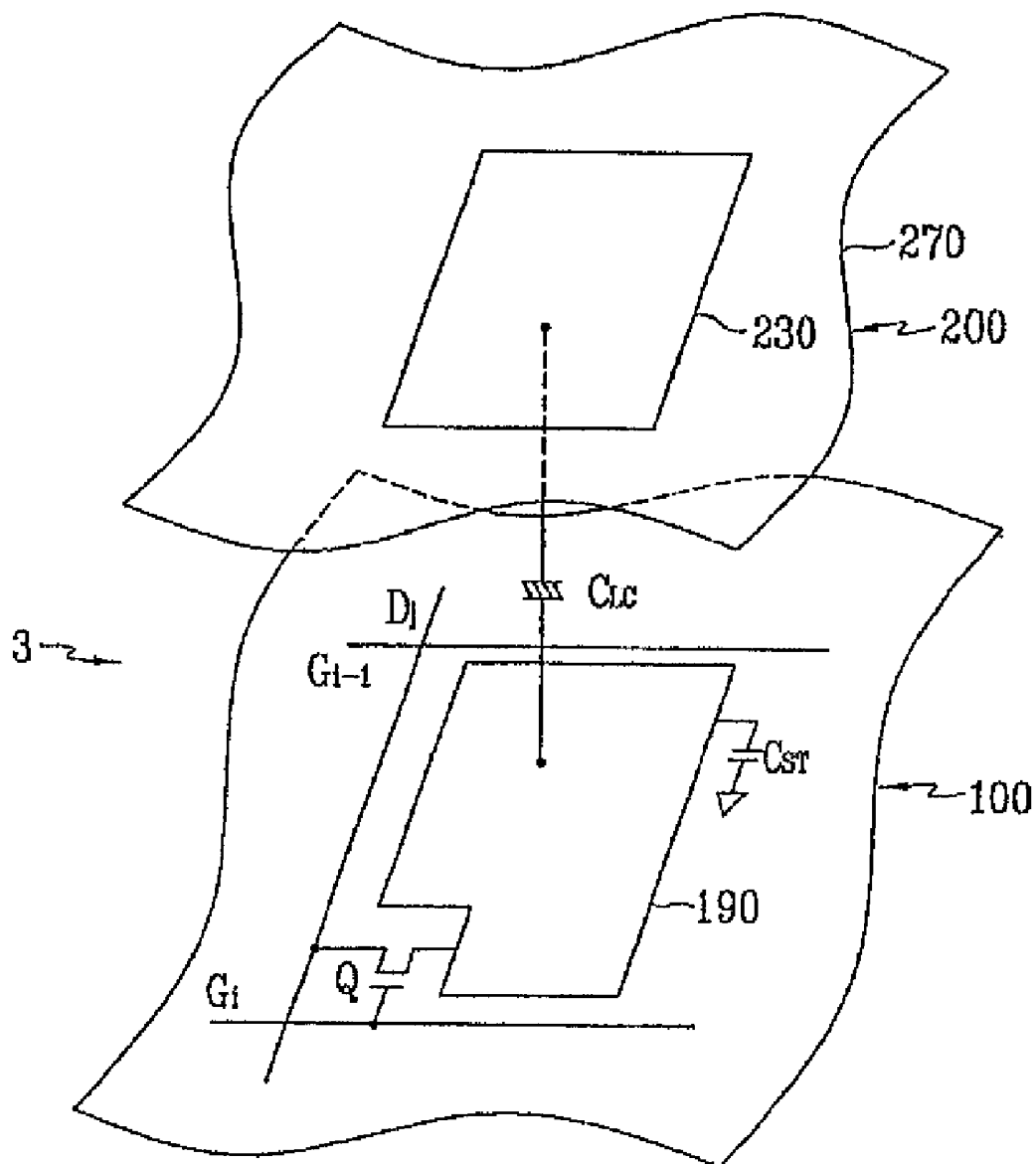


FIG. 3

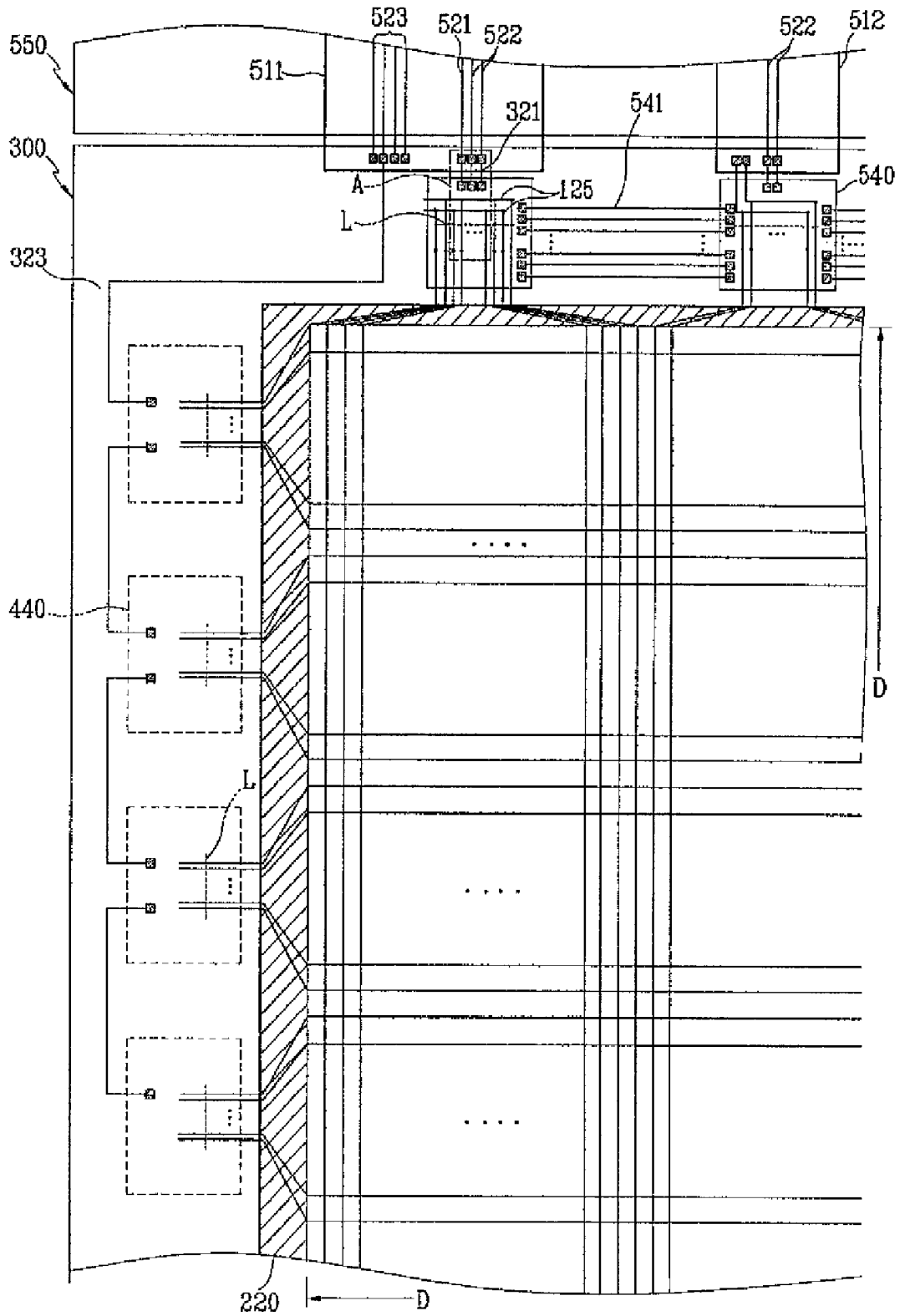


FIG. 4

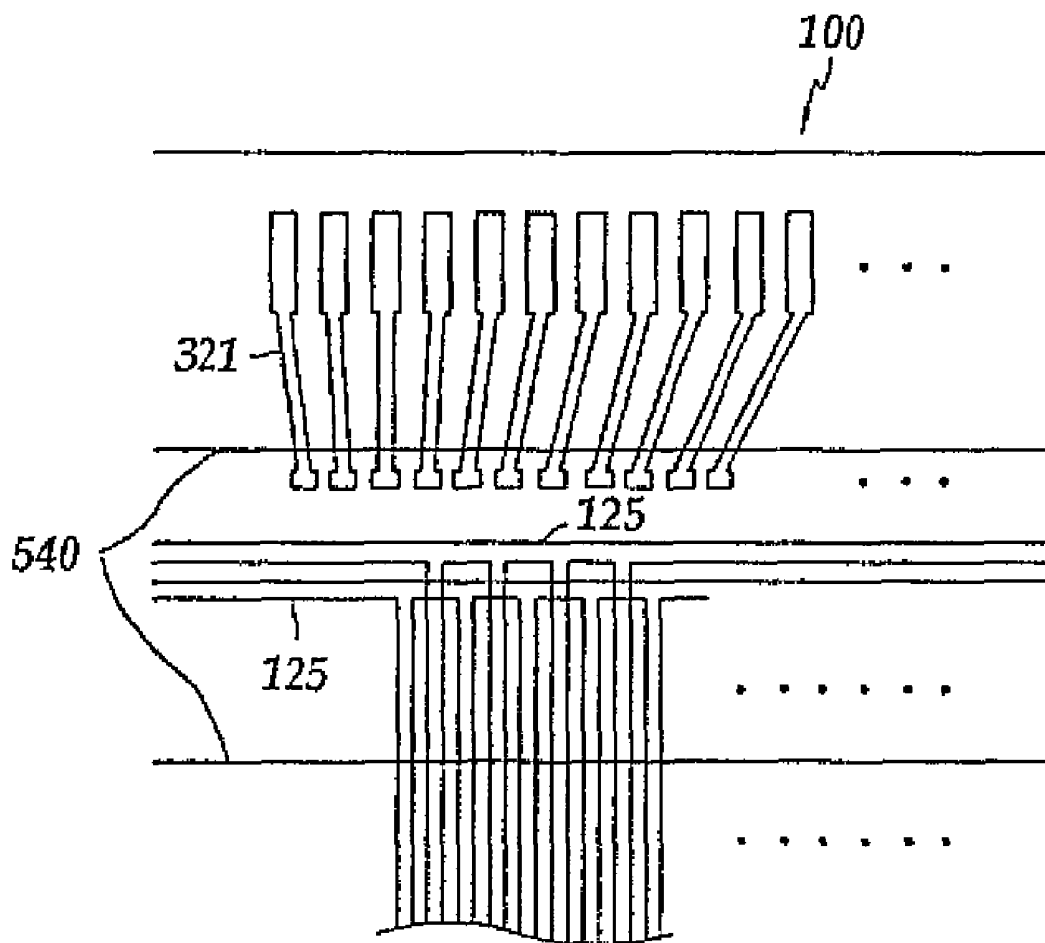


FIG. 5

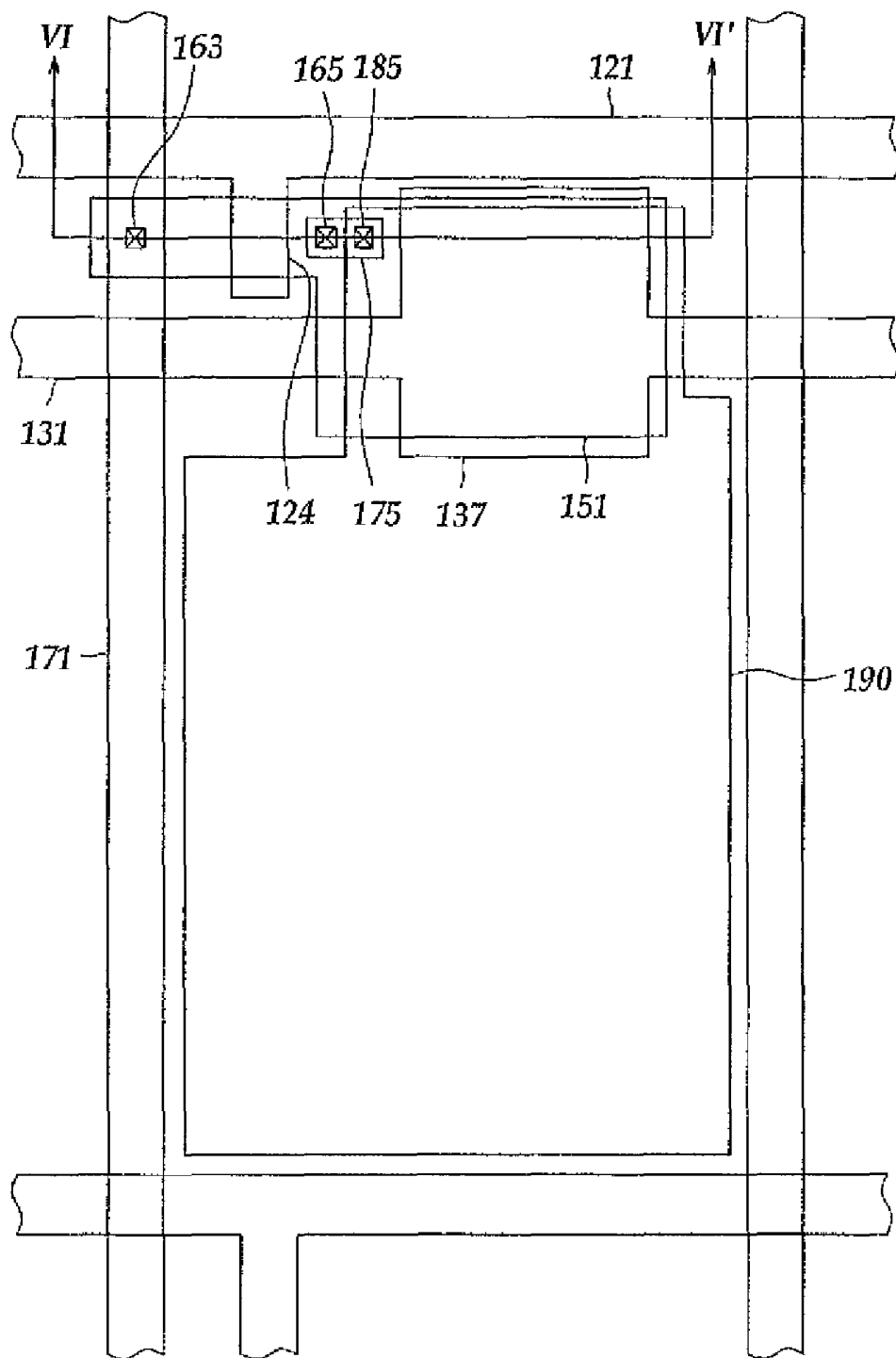


FIG. 6

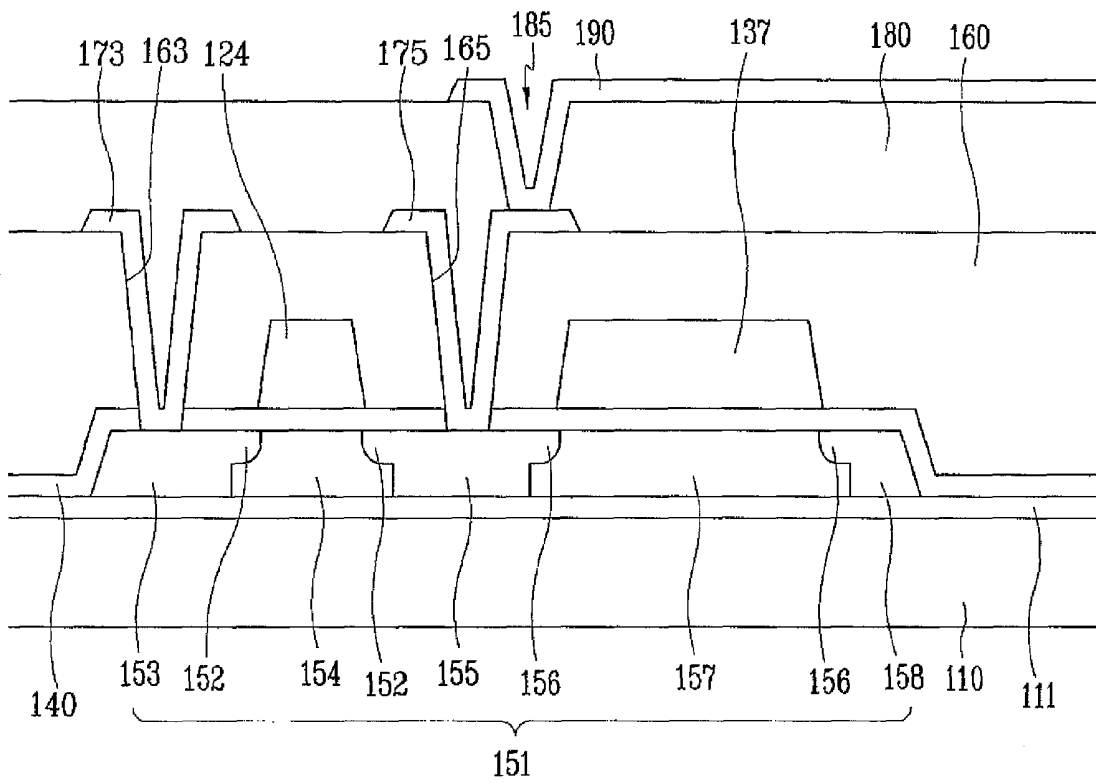


FIG. 7

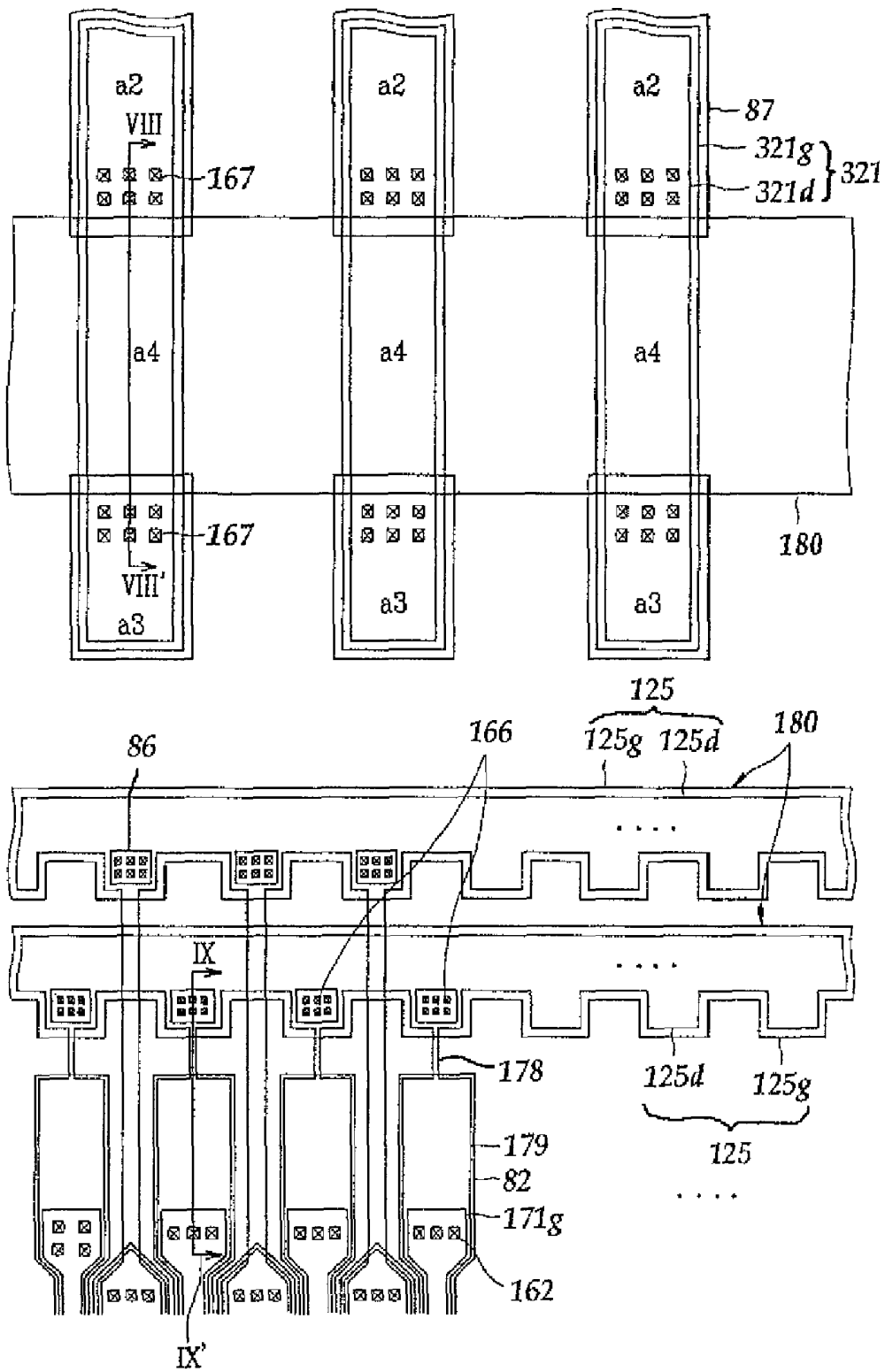


FIG. 8

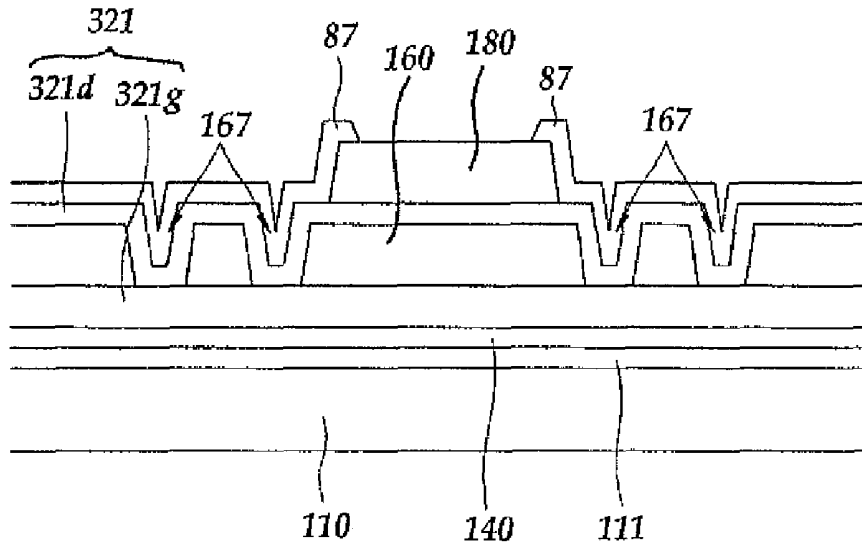
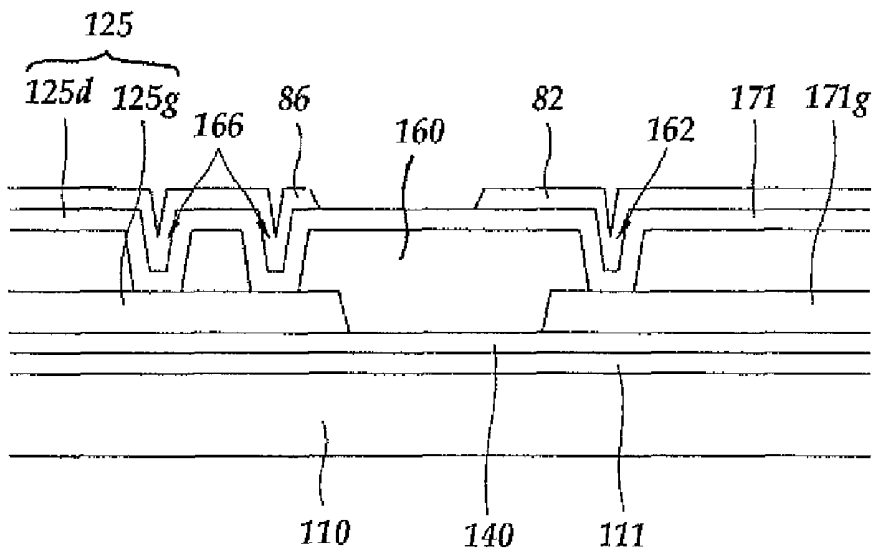


FIG. 9



**LIQUID CRYSTAL DISPLAY HAVING A
DRIVER CONTACT STRUCTURE FOR
PREVENTING CORROSION OF
CONDUCTIVE FILMS**

CROSS-REFERENCE TO RELATED
APPLICATIONS

This application is a continuation of U.S. patent application Ser. No. 10/986,651, filed Nov. 12, 2004 now U.S. Pat. No. 7,486,367, which claims priority to Korean Patent Application No. 2003-79693, filed Nov. 12, 2003, the contents of which are herein incorporated by reference in their entireties.

BACKGROUND OF THE INVENTION

(a) Field of the Invention

The present invention relates to a display panel.

(b) Description of Related Art

A flat panel display such as a liquid crystal display (LCD) and an organic light emitting display (OLED) includes a display panel including a plurality of pixels and a plurality of signal lines connected thereto, a plurality of drivers for driving the display panel, and a controller for controlling the drivers.

The drivers usually include a plurality of integrated circuit (IC) chips that are mounted on flexible printed circuit (FPC) films attached to the display panel or mounted directly on the display panel. The driver chips are supplied with control signals and driving voltages from a printed circuit board (PCB) that mount a plurality of circuit elements including the controller and a voltage generator.

When the driving chips are mounted directly on the display panel, FPC films including a plurality of conductive lines are provided between the display panel and the PCB for transmitting control signals, driving voltages, and image data. The FPC films are attached to the display panel and the electrical connection between the FPC films and the driving chips is implemented by a plurality of lead lines formed on the display panel. The driving chips generate display signals based on signals and voltages from the FPC films and apply the display signals to the signal lines on the display panel.

The lead lines on the display panel have contact portions contacting the FPC films and the driving chips, and the signal lines on the display panel also have contact portions contacting the driving chips.

The contact portions may include several conductive films. The contact between the conductive films and between the contact portions and the driving chips or the FPC films are often defected and the poor contact may cause corrosion of the conductive films to disconnect the transmission of signals and voltages. Accordingly, it is required to provide reliable contact structures.

SUMMARY OF THE INVENTION

A display panel including first to third conductive films is provided, which includes: a first signal line including a first portion that includes the first conductive film, an intermediate portion that includes at least two of the first to the third conductive films ("intermediate portion films"), and a contact portion that contacts an output terminal of a driving circuit and includes the intermediate portion films except for at least one of the intermediate portion films; a second signal line intersecting the first signal line and including the second conductive film; a switching element connected to the first

and the second signal lines; and a pixel electrode connected to the switching element and including the third conductive film.

The intermediate portion films may include the first and the second conductive films.

The first conductive film may include Cr, Mo, or Mo alloy and the second conductive film comprises Al or Al alloy.

The contact portion may not include the second conductive film.

The display panel may further include an insulating film disposed between the first conductive film and the second conductive film and having at least a contact hole connecting the first conductive film and the second conductive film, wherein the intermediate portion further comprises the third conductive film.

The contact portion may further include the third conductive film.

The third conductive film may include transparent conductor or reflective conductor.

The display panel may further include a third signal line disposed near the contact portion.

The third signal line may include the first and the second conductive films.

The first signal line may further include an extension connected to the contact portion and disposed between the contact portion and the third signal line.

The extension may include the first conductive film.

The switching element may include a polysilicon film disposed under the second signal line.

A display panel including first to third conductive films is provided, which includes: a first signal line including a first conductive film; a second signal line intersecting the first signal line and including a second conductive film; a switching element connected to the first and the second signal lines; a pixel electrode connected to the switching element and including a third conductive film; and a third signal line separated from the first and the second signal lines and including a first contact portion that contacts an external device and includes at least one of the first to the third conductive films, a second contact portion that contacts an input terminal of a driving circuit and includes at least one of the first to the third conductive films, and an intermediate portion that connects the first contact portion and the second contact portion and includes the first and the second conductive films.

The first and the second contact portions may include the first and the second conductive films.

The first conductive film may include Cr, Mo, or Mo alloy and the second conductive film comprises Al or Al alloy.

The display panel may further include: a first insulating film disposed between the first conductive film and the second conductive film and having a plurality of contact holes connecting the first conductive film and the second conductive film at the first and the second contact portions; and first and second contact assistants including the third conductive film and disposed on the first and the second contact portions.

The first and the second contact assistants may substantially fully cover the first and the second contact portions.

The display panel may further include a second insulating film disposed on the first insulating film opposite the intermediate portion, wherein the first and the second contact assistants extend onto the second insulating film.

The first and the second contact assistants may include transparent conductor or reflective conductor.

The switching element may include a polysilicon film disposed under the second signal line.

BRIEF DESCRIPTION OF THE DRAWINGS

The present invention will become more apparent by describing embodiments thereof in detail with reference to the accompanying drawing in which:

FIG. 1 is a block diagram of an LCD according to an embodiment of the present invention;

FIG. 2 is an equivalent circuit diagram of a pixel of an LCD according to an embodiment of the present invention;

FIG. 3 is a schematic layout view of an LCD according to an embodiment of the present invention;

FIG. 4 is an expanded view of the LC panel assembly near a data driving IC shown in FIG. 3;

FIG. 5 is an exemplary layout view of a display area of the TFT array panel shown in FIGS. 1-4;

FIG. 6 is a sectional view of the display area shown in FIG. 5 taken along the lines VI-VI';

FIG. 7 is an exemplary layout view of a peripheral area of the TFT array panel shown in FIGS. 1-4 near a data driver; and

FIGS. 8 and 9 are sectional views of the peripheral area shown in FIG. 7 taken along the lines VIII-VIII' and IX-IX', respectively.

DETAILED DESCRIPTION OF EMBODIMENTS

The present invention now will be described more fully hereinafter with reference to the accompanying drawings, in which preferred embodiments of the invention are shown. This invention may, however, be embodied in many different forms and should not be construed as limited to the embodiments set forth herein. Like numerals refer to like elements throughout.

In the drawings, the thickness of layers and regions are exaggerated for clarity. Like numerals refer to like elements throughout. It will be understood that when an element such as a layer, region or substrate is referred to as being "on" another element, it can be directly on the other element or intervening elements may also be present. In contrast, when an element is referred to as being "directly on" another element, there are no intervening elements present.

Then, liquid crystal displays as an example of display device according to embodiments of the present invention will be described with reference to the accompanying drawings.

Referring to FIGS. 1 and 2, an LCD according to an embodiment of the present invention will be described in detail.

FIG. 1 is a block diagram of an LCD according to an embodiment of the present invention, and FIG. 2 is an equivalent circuit diagram of a pixel of an LCD according to an embodiment of the present invention.

Referring to FIG. 1, an LCD according to an embodiment includes a LC panel assembly 300, a gate driver 400 and a data driver 500 that are connected to the panel assembly 300, a gray voltage generator 800 connected to the data driver 500, and a signal controller 600 controlling the above elements.

Referring to FIG. 1, the panel assembly 300 includes a plurality of display signal lines G_1 - G_n , and D_1 - D_m and a plurality of pixels connected thereto and arranged substantially in a matrix. In a structural view shown in FIG. 2, the panel assembly 300 includes lower and upper panels 100 and 200 and a LC layer interposed therebetween.

The display signal lines G_1 - G_n , and D_1 - D_m are disposed on the lower panel 100 and include a plurality of gate lines G_1 - G_n transmitting gate signals (also referred to as "scanning signals"), and a plurality of data lines D_1 - D_m transmitting data

signals. The gate lines G_1 - G_n extend substantially in a row direction and substantially parallel to each other, while the data lines D_1 - D_m extend substantially in a column direction and substantially parallel to each other.

Each pixel includes a switching element Q connected to the signal lines G_1 - G_n , and D_1 - D_m , and a LC capacitor C_{LC} and a storage capacitor C_{ST} that are connected to the switching element Q. If unnecessary, the storage capacitor C_{ST} may be omitted.

The switching element Q including a TFT is provided on a lower panel 100 and has three terminals: a control terminal connected to one of the gate lines G_1 - G_n ; an input terminal connected to one of the data lines D_1 - D_m ; and an output terminal connected to both the LC capacitor C_{LC} and the storage capacitor C_{ST} .

The LC capacitor C_{LC} includes a pixel electrode 190 provided on the lower panel 100 and a common electrode 270 provided on an upper panel 200 as two terminals. The LC layer 3 disposed between the two electrodes 190 and 270 functions as dielectric of the LC capacitor C_{LC} . The pixel electrode 190 is connected to the switching element Q, and the common electrode 270 is supplied with a common voltage V_{com} and covers an entire surface of the upper panel 200. Unlike FIG. 2, the common electrode 270 may be provided on the lower panel 100, and both electrodes 190 and 270 may have shapes of bars or stripes.

The storage capacitor C_{ST} is an auxiliary capacitor for the LC capacitor C_{LC} . The storage capacitor C_{ST} includes the pixel electrode 190 and a separate signal line, which is provided on the lower panel 100, overlaps the pixel electrode 190 via an insulator, and is supplied with a predetermined voltage such as the common voltage V_{com} . Alternatively, the storage capacitor C_{ST} includes the pixel electrode 190 and an adjacent gate line called a previous gate line, which overlaps the pixel electrode 190 via an insulator.

For color display, each pixel uniquely represents one of three primary colors (i.e., spatial division) or each pixel represents three primary colors in turn (i.e., time division) such that spatial or temporal sum of the three primary colors are recognized as a desired color. FIG. 2 shows an example of the spatial division that each pixel is provided with a color filter 230, one of red, green and blue color filters, in an area of the upper panel 200 facing the pixel electrode 190. Alternatively, the color filter 230 is provided on or under the pixel electrode 190 on the lower panel 100.

One or more polarizers (not shown) are attached to the panels 100 and 200.

Referring to FIG. 1 again, the gray voltage generator 800 generates two sets of a plurality of gray voltages related to the transmittance of the pixels. The gray voltages in one set have a positive polarity with respect to the common voltage V_{com} , while those in the other set have a negative polarity with respect to the common voltage V_{com} .

The gate driver 400 is connected to the gate lines G_1 - G_n of the panel assembly 300 and synthesizes the gate-on voltage V_{on} and the gate-off voltage V_{off} from an external device to generate gate signals for application to the gate lines G_1 - G_n . The gate driver 400 is mounted on the panel assembly 300 and it may include a plurality of IC (integrated circuit) chips.

The data driver 500 is connected to the data lines D_1 - D_m of the panel assembly 300 and applies data voltages, which are selected from the gray voltages supplied from the gray voltage generator 800, to the data lines D_1 - D_m . The data driver 500 is also mounted on the panel assembly 300 and it may include a plurality of IC chips, too.

The IC chips of the drivers 400 and 500 may be mounted on flexible printed circuit (FPC) films in a TCP (tape carrier

package) type which are attached to the LC panel assembly 300. Alternately, the drivers 400 and 500 may be integrated into the panel assembly 300 along with the display signal lines G_1 - G_n and D_1 - D_m , and the TET switching elements Q.

The signal controller 600 controls the gate driver 400 and the data driver 500 and it may be mounted on a printed circuit board (PCB).

A detailed example of the LCD shown in FIGS. 1 and 2 is now described with reference to FIGS. 3 and 4.

FIG. 3 is a schematic layout view of an LCD according to an embodiment of the present invention, and FIG. 4 is an expanded view of the LC panel assembly near a data driving IC shown in FIG. 3.

As shown in FIGS. 3 and 4, a panel assembly 300 includes a plurality of gate lines and a plurality of data lines. A plurality of gate driving IC chips 440 and a plurality of data driving IC chips 540 are mounted on the panel assembly 300. The gate driving IC chips 440 are disposed near a left edge of the panel assembly 300 and the data driving IC chips 540 are disposed near a top edge of the panel assembly 300. A PCB 550 is disposed near a top edge of the panel assembly 300 and several circuit elements such as a signal controller 600 and a gray voltage generator 800 are provided on the PCB 550. The panel assembly 300 and the PCB 550 are electrically and physically interconnected by a plurality of FPC films 511 and 512.

The leftmost FPC film 511 includes a plurality of data transmission lines 521 and a plurality of driving signal lines 522 and 523. The data transmission lines 521 for transmitting image data are connected to input terminals of the data driving IC chips 540. The driving signal lines 522 and 523 transmit electrical voltages and control signals for activating the driving IC chips 540 and 440 via driving signal lines 321 and 323 disposed on the panel assembly 300.

The remaining FPC films 512 include a plurality of driving signal lines 522 transmitting electrical voltages and control signals to the data driving IC chips 540 electrically connected thereto.

The signal lines 521-523 are connected to the circuit elements on the PCB 550 and receive signals therefrom.

Alternatively, the driving signal lines 523 may be provided on a separate FPC film (not shown).

As shown in FIGS. 3 and 4, a plurality of pixel areas defined by the intersections of the gate lines extending in the transverse direction and the data lines extending in the longitudinal direction form a display area D on the panel assembly 300. A light blocking member 220 (indicated by hatched area) for blocking light leakage exterior to the display area D is disposed around the display area D.

Although the gate lines as well as the data lines extend substantially parallel to each other in the display area D, they approach each other group by group like a fan and then become parallel again as they go away from the display area D. Such an area is referred to as a fan-out area.

The data driving IC chips 540 are disposed outside of the display area D and sequentially arranged in the transverse direction. Adjacent data driving IC chips 540 are connected by a plurality of interconnections 541 and the image data transmitted from the leftmost FPC film 511 to the leftmost data driving IC 540 are then transmitted to the next data driving IC 540 via the interconnections 541, and so on.

A plurality of inspection lines 125 are formed on the panel assembly 300 and two inspection lines 125 are disposed under each of the data driving IC chips 540. Each of the inspection lines 125 extends substantially in the transverse direction and curves upward and it includes an inspection pad. The data

lines are alternately connected to the inspection lines 125. The number of the inspection lines 125 may be varied.

The gate driving IC chips 440 are mounted near the left edges of the panel assembly 300 external to the display area D and arranged in the column direction. The driving signal lines 323 are located near the gate driving IC chips 440 and electrically connect the driving signal lines 523 of the leftmost FPC film 511 to the uppermost gate driving IC 440 or electrically connect the gate driving IC chips 440.

As described above, the LC panel assembly 300 includes the two panels 100 and 200, and one of the panels 100 and 200 provided with the TFTs is referred to as "TFT array panel." The signal lines 321 and 323 and the interconnections 541 are provided on the TFT array panel 100.

An exemplary TFT array panel for an LCD according to an embodiment of the present invention is now described in detail with reference to FIGS. 5-9 as well as FIGS. 3 and 4.

FIG. 5 is an exemplary layout view of a display area of the TFT array panel shown in FIGS. 1-4, and FIG. 6 is a sectional view of the display area shown in FIG. 5 taken along the lines VI-VI'. FIG. 7 is an exemplary layout view of a peripheral area of the TFT array panel shown in FIGS. 1-4 near a data driver, and FIGS. 8 and 9 are sectional views of the peripheral area shown in FIG. 7 taken along the lines VIII-VIII' and IX-IX', respectively.

A blocking film 111 preferably made of silicon oxide (SiO_2) or silicon nitride (SiNx) is formed on a transparent insulating substrate 110. The blocking film 111 may have a dual-layered structure.

A plurality of semiconductor islands 151 preferably made of polysilicon are formed on the blocking film 111. Each of the semiconductor islands 151 includes a plurality of extrinsic regions containing conductive impurity, which include a plurality of heavily doped regions and a plurality of lightly doped regions, and a plurality of intrinsic regions hardly containing conductive impurity. The intrinsic regions include a channel region 154 and a storage region 157, and the highly doped regions include source and drain regions 153 and 155 separated from each other with respect to the channel region 154 and dummy regions 158. The lightly doped regions 152 and 156 are narrow and disposed between the intrinsic regions 154 and 157 and the heavily doped regions 153, 155 and 158. In particular, the lightly doped regions 152 disposed between the source region 153 and the channel region 154 and between the drain region 155 and the channel region 154 are referred to as "lightly doped drain (LDD) regions."

The conductive impurity includes P type impurity such as boron (B) and gallium (Ga) and N type impurity such as phosphorous (P) and arsenic (As). The lightly doped regions 152 and 156 prevent leakage current of TFTs and are substituted with offset regions that contain substantially no impurity.

A gate insulating layer 140 preferably made of silicon nitride (SiNx) is formed on the semiconductor islands 151 and the blocking film 111.

A plurality of gate conductors including a plurality of gate lines 121, a plurality of storage electrode lines 131, a plurality of pairs of lower inspection lines 125g, a plurality of lower driving signal lines 321g, and a plurality of auxiliary data lines 171g are formed on an insulating substrate 110.

The gate lines 121 for transmitting gate signals extend substantially in a transverse direction and include a plurality of gate electrodes 124 protruding downward to overlap the channel areas 154 of the semiconductor islands 151. The gate electrodes 124 may further overlap the lightly doped regions 152. Each gate Line 121 may include an expanded end portion having a large area for contact with another layer or an exter-

nal driving circuit. The gate lines **121** may be directly connected to a gate driving circuit for generating the gate signals, which may be integrated on the substrate **110**.

The storage electrode lines **131** are supplied with a predetermined voltage such as a common voltage and include a plurality of storage electrodes **137** protruding upward and downward and overlapping the storage regions **157** of the semiconductor islands **151**.

Each of the lower inspection lines **125g** extends substantially in the transverse direction and it has a rectilinear upper edge and a periodically-curved lower edge having convexities and concavities like a rectangular waveform. The convexities and the concavities alternate in each pair of the lower inspection lines **125g**.

The lower driving signal lines **321g** extend substantially in a longitudinal direction and they may have end portions having a large area.

Each of the auxiliary data lines **171g** extends substantially in the longitudinal direction and it has an end portion having a large area.

The gate conductors **121**, **131**, **125g**, **321g** and **171g** are preferably made of low resistivity material including Al containing metal such as Al and Al alloy (e.g. Al—Nd), Ag containing metal such as Ag and Ag alloy, and Cu containing metal such as Cu and Cu alloy. The gate conductors **121**, **131**, **125g**, **321g** and **171g** may have a multi-layered structure including two films having different physical characteristics. One of the two films is preferably made of low resistivity metal including Al containing metal, Ag containing metal, and Cu containing metal for reducing signal delay or voltage drop in the gate conductors **121**, **131**, **125g**, **321g** and **171g**. The other film is preferably made of material such as Cr, Mo and Mo alloy, Ta or Ti, which has good physical, chemical, and electrical contact characteristics with other materials such as indium tin oxide (ITO) or indium zinc oxide (IZO). Good examples of the combination of the two films are a lower Cr film and an upper Al—Nd alloy film and a lower Al film and an upper Mo film.

In addition, the lateral sides of the gate conductors **121**, **131**, **125g**, **321g** and **171g** are inclined relative to a surface of the substrate **110**, and the inclination angle thereof ranges about 30-80 degrees.

An interlayer insulating layer **160** is formed on the gate conductors **121**, **131**, **125g**, **321g** and **171g**. The interlayer insulating layer **160** is preferably made of photosensitive organic material having a good flatness characteristic, low dielectric insulating material such as a-Si:C:O and a-Si:O:F formed by plasma enhanced chemical vapor deposition (PECVD), or inorganic material such as silicon nitride and silicon oxide.

The interlayer insulating layer **160** has a plurality of contact holes **162**, **166** and **167** exposing the end portions of the auxiliary data lines **171g**, the convexities of the lower inspection lines **125g**, and both end portions of the lower driving signal lines **321g**, respectively. In addition, the interlayer insulating layer **160** and the gate insulating layer **140** have a plurality of contact holes **163** and **165** exposing the source regions **153** and the drain electrodes **175**, respectively. A number of contact holes **162**, **166** and **167** are disposed on each of the end portions of the auxiliary data lines **171g**, the convexities of the lower inspection lines **125g**, and the end portions of the lower driving signal lines **321g**.

A plurality of data conductors including a plurality of data lines **171**, a plurality of drain electrodes **175**, a plurality of pairs of upper inspection lines **125d**, and a plurality of lower driving signal lines **321d** are formed on the interlayer insulating layer **160**.

The data lines **171** for transmitting data voltages extend substantially in the longitudinal direction and intersect the gate lines **121** and they are connected to the auxiliary data lines **171g** through the contact holes **162** at the end portions of the auxiliary data lines **171g**. Each data line **171** includes a plurality of source electrodes **173** connected to the source regions **153** through the contact holes **163**, an expansion **179**, and an extension **178** connected to the expansion **179** and an upper inspection line **125d**. The expansions **179** of the data lines **171** partly overlap the end portions of the auxiliary data lines **171g**, but considerable portions of the expansions **179** do not overlap the end portions of the auxiliary data lines **171g**.

The drain electrodes **175** are separated from the source electrodes **173** and connected to the drain regions **155** through the contact holes **165**.

The upper inspection lines **125d** are disposed on the lower inspection lines **125g** and extend along the lower inspection lines **125g** such that a pair of lower and upper inspection lines **125g** and **125d** form an inspection line **125**. Each of the upper inspection lines **125d** also has a rectilinear upper edge and a periodically-curved lower edge having convexities and concavities following those of the lower inspection lines **125g**. The lower and the upper inspection lines **125g** and **125d** are connected to each other through the contact holes **166** at their convexities.

The upper driving signal lines **321d** are disposed on the lower driving signal lines **321g** and extend along the lower driving signal lines **321g** such that a pair of lower and upper driving signal lines **321g** and **321d** form a driving signal line **321**. Each driving signal line **321** includes an input end **a2** to be connected to a FPC film (not shown), an output end **a3** to be connected to a data driving IC chip, and an intermediate portion **a4** connected between the input end **a2** and the output end **a3**.

The data conductors **171**, **175**, **125d** and **321d** are preferably made of refractory metal including Cr, Mo, Ti, Ta or alloys thereof. They may have a multi-layered structure preferably including a low resistivity film and a good contact film. A good example of the multi-layered structure includes a Mo lower film, an Al middle film, and a Mo upper film as well as the above-described combinations of a Cr lower film and an Al—Nd upper film and an Al lower film and a Mo upper film. Another example of the multi-layered structure is a Cr lower film and a MoW upper film.

Like the gate conductors **121**, **131**, **125g**, **321g** and **171g**, the data conductors **171**, **175**, **125d** and **321d** have tapered lateral sides relative to a surface of the substrate **110**, and the inclination angles thereof range about 30-80 degrees.

A passivation layer **180** is formed on the data conductors **171**, **175**, **125d** and **321d**, and the interlayer insulating layer **160**. The passivation layer **180** is also preferably made of photosensitive organic material having a good flatness characteristic, low dielectric insulating material such as a-Si:C:O and a-Si:O:F formed by PECVD, or inorganic material such as silicon nitride and silicon oxide.

The passivation layer **180** is not provided at the positions where the data driving IC chips **540** and the end portions of the driving signal lines **321** are disposed. However, the passivation layer **180** covers the intermediate portions **a4** of the driving signal lines **321** and it has a plurality of contact holes **185** the drain electrodes **175**.

A plurality of pixel electrodes **190** and a plurality of contact assistants **82**, **86** and **87**, which are preferably made of at least one of transparent conductor such as ITO or IZO and opaque reflective conductor such as Al or Ag, are formed on the passivation layer **180** or the interlayer insulating layer **160**.

The pixel electrodes **190** are physically and electrically connected to the drain electrodes **175** through the contact holes **185** such that the pixel electrodes **190** receive the data voltages from the drain regions **155** via the drain electrodes **175**.

Referring back to FIG. 2, the pixel electrodes **190** supplied with the data voltages generate electric fields in cooperation with the common electrode **270** on the other panel **200**, which determine orientations of liquid crystal molecules in a liquid crystal layer **3** disposed therebetween or cause currents in light emitting members (not shown) disposed therebetween.

As described above, a pixel electrode **190** and a common electrode form a liquid crystal capacitor and a pixel electrode **190** and a drain region **155** connected thereto and a storage electrode line **131** including storage electrodes **137** form a storage capacitor.

The pixel electrodes **190** may overlap the gate lines **121** and the data lines **171** to increase aperture ratio particularly when the passivation layer **180** is made of low dielectric insulator.

The contact assistants **82**, **86** and **87** are disposed on the contact holes **162**, **166** and **167** to be connected to the expansions **179** of the data lines **171**, the convexities of the inspection lines **125**, and the end portions of the driving signal lines **321**, respectively. The contact assistants **82** almost fully cover the expansions **179** of the data lines **171**, but they may be disposed only near the contact holes **162**. The contact assistants **86** are disposed only near the contact holes **166**, but they may be connected to one another and extend along the inspection lines **125**. The contact assistants **87** occupy considerable areas on the end portions of the driving signal lines **321** and they have portions disposed on the passivation layer **180** to fully cover the exposed portions of the driving signal lines **321**. Since the upper driving signal lines **321d** extend along the lower driving signal lines **321g** in a single body, the driving signal lines **321** are not disconnected even though there is a defect in the contact between the lower driving signal lines **321g** and the upper driving signal lines **321d** at the contact holes **167**. In addition, since the edges of the contact assistants **87** are disposed on the passivation layer **180** and there is no edge of the upper driving signal lines **321d** between the contact holes **167** and the edges of the contact assistants **87** on the passivation layer **180**, the possibility that etchant for etching the contact assistants **87** intrudes edges do not contact the lower driving signal lines **321g**.

In this way, the contact assistants **82**, **86** and **87** protect the exposed portions to prevent corrosion and complement the adhesion between the exposed portions and the driving IC chips **540**. When the pixel electrodes **190** include a transparent conductor (not shown) and a reflective conductor (not shown), the contact assistants **82**, **86** and **87** may include one of the two conductors.

A driving IC chip **540** having input bumps (not shown) and output bumps (not shown) is mounted on the TFT array panel **100**.

Some of the output bumps of the driving IC chip **540** are disposed on the expansions **179** of the data lines **171** and the contact assistants **82** such that the bumps are aligned not to overlap the auxiliary data lines **171**. This configuration is advantageous in case that the bumps and the expansions **179** of the data lines **171** are short-circuited by laser illumination for repairing contact defect therebetween. It is because the laser illumination may contact the contact assistants **87** with the auxiliary data lines **171g** to cause corrosion therebetween if the auxiliary data lines **171g** are disposed under the bumps.

Some of the input bumps of the driving IC chip **540** are disposed on one end portions of the driving signal lines **321** and the contact assistants **87**.

The above-described contact structures can be employed to the gate lines **121** and the gate driver **400**.

Now, the operation of the above-described LCD will be described in detail.

The signal controller **600** is supplied with input image signals R, G and B and input control signals controlling the display thereof such as a vertical synchronization signal Vsync, a horizontal synchronization signal Hsync, a main clock MCLK, and a data enable signal DE, from an external graphics controller (not shown). After generating gate control signals CONT1 and data control signals CONT2 and processing the image signals R, G and B suitable for the operation of the panel assembly **300** on the basis of the input control signals and the input image signals R, G and B, the signal controller **600** transmits the gate control signals CONT1 to the gate driver **400**, and the processed image signals R', G' and B' and the data control signals CONT2 to the data driver **500**, through the signal lines **521-523** and the driving signal lines **321** and **323**.

The gate control signals CONT1 include a scanning start signal STV for instructing to start scanning and at least a clock signal for controlling the output time of the gate-on voltage Von. The gate control signals CONT1 may further include an output enable signal OE for defining the duration of die gate-on voltage Von.

The data control signals CONT2 include a horizontal synchronization start signal STH for informing of start of a horizontal period, a load signal LOAD for instructing to apply the data voltages to the data lines D₁-D_m, an inversion control signal RVS for reversing the polarity of the data voltages (with respect to the common voltage Vcom), and a data clock signal HCLK.

The data driver **500** receives a packet of the image data R', G' and B' for a pixel row from the signal controller **600** and converts the image data R', G' and B' into analog data voltages selected from the gray voltages supplied from the gray voltage generator **800** in response to the data control signals CONT2 from the signal controller **600**. Thereafter, the data driver **500** applies the data voltages to the data lines D₁-D_m.

Responsive to the gate control signals CONT1 from the signal controller **600**, the gate driver **400** applies the gate-on voltage Von to the gate line G₁-G_n, thereby turning on the switching elements Q connected thereto. The data voltages applied to the data lines D₁-D_m are supplied to the pixels through the activated switching elements Q.

The difference between the data voltage and the common voltage Vcom is represented as a voltage across the LC capacitor C_{LC}, i.e., a pixel voltage. The LC molecules in the LC capacitor C_{LC} have orientations depending on the magnitude of the pixel voltage, and the molecular orientations determine the polarization of light passing through the LC layer **3**. The polarizer(s) converts the light polarization into the light transmittance.

By repeating this procedure by a unit of the horizontal period (which is indicated by 1H and equal to one period of the horizontal synchronization signal Hsync and the data enable signal DE), all gate lines G₁-G_n are sequentially supplied with the gate-on voltage Von during a frame, thereby applying the data voltages to all pixels. When the next frame starts after finishing one frame, the inversion control signal RVS applied to the data driver **500** is controlled such that the polarity of the data voltages is reversed (which is called "frame inversion"). The inversion control signal RVS may be also controlled such that the polarity of the data voltages flowing in a data line in one frame are reversed (for example,

line inversion and dot inversion), or the polarity of the data voltages in one packet are reversed (for example, column inversion and dot inversion).

This process will be described in more detail.

After receiving the scanning start signal STV, the uppermost gate driving IC **440** selects the gate-on voltage V_{on} among the two voltages V_{on} and V_{off} and outputs to the first gate lines G_1 . The remaining gate lines G_2 - G_n are supplied with the gate-off voltage V_{off} . The switching elements Q connected to the first gate line G_1 are turned on upon the application of the gate-on voltage V_{on} , and the data voltages for the first pixel row are applied to the LC capacitors C_{LC} and the storage capacitors C_{ST} in the first pixel row through the activated switching elements Q. After charging the capacitors C_{LC} and C_{ST} of the first pixel row, the uppermost gate driving IC **440** applies the gate-off voltage V_{off} to the first gate line G_1 to turn off the switching elements Q connected thereto, and applies the gate-on voltage V_{on} to the second gate line G_2 .

By repeating this procedure, the uppermost gate driving IC **440** applies the gate-on voltage V_{on} to all the gate lines connected thereto, and outputs a carry signal for informing of the termination of the scanning to the next gate driving IC **440**.

The second gate driving IC **440**, after receiving the carry signal, scans all the gate lines connected thereto and generates a carry signal to be transmitted to the next gate driving IC **440** upon completion of the scanning.

In this way, the scanning of the remaining gate drive IC chips is completed and to the termination of the scanning of the lowermost gate driving IC **440** means the termination of one frame.

The above descriptions may be adapted to other flat panel display devices such as OLED.

Although preferred embodiments of the present invention have been described in detail hereinabove, it should be clearly understood that many variations and/or modifications of the basic inventive concepts herein taught which may appear to those skilled in the present art will still fall within the spirit and scope of the present invention, as defined in the appended claims.

What is claimed is:

1. A display panel comprising:
 - a substrate;
 - a gate line including a first conductive film;

an auxiliary data line formed on the substrate and including the first conductive film;

a data line intersecting the gate line and including a second conductive film, wherein the data line includes an expanded end portion including a contact portion contacting an input terminal of a driving circuit;

a switching element connected to the gate line and the data line;

a pixel electrode connected to the switching element and including a third conductive film;

a first insulating layer formed between the first conductive film and the second conductive film and comprising a first contact hole exposing the auxiliary data line; and

a first contact assistant including the third conductive film and disposed on the first contact hole,

wherein the data line contacts the auxiliary data line through the first contact hole, and

wherein the auxiliary data line is not expanded to overlap the contact portion.

2. The display panel of claim 1, further comprising an inspection line disposed near the end portion of the data line.

3. The display panel of claim 2, wherein the inspection line comprises the first and the second conductive films.

4. The display panel of claim 3, wherein the first insulating layer further comprises a second contact hole exposing the first conductive film of the inspection line, and

the first conductive film of the inspection line contacts the second conductive film of the inspection line through the second contact hole.

5. The display panel of claim 4, further comprising a second contact assistant including the third conductive film and disposed on the second contact hole,

wherein the first contact assistant contacts data lines and the second assistant contacts the second film of the inspection line.

6. The display panel of claim 5, wherein the first conductive film comprises Al or Al alloy and the second conductive film comprises Cr, Mo, or Mo alloy.

7. The display panel of claim 6, wherein the third conductive film comprises a transparent conductor or a reflective conductor.

8. The display panel of claim 7, wherein the switching element comprises a polysilicon film connected to the data line.

* * * * *

专利名称(译)	液晶显示器具有用于防止导电膜腐蚀的驱动器接触结构		
公开(公告)号	US7868986	公开(公告)日	2011-01-11
申请号	US12/353045	申请日	2009-01-13
[标]申请(专利权)人(译)	游春GI		
申请(专利权)人(译)	游春-GI		
当前申请(专利权)人(译)	三星DISPLAY CO. , LTD.		
[标]发明人	YOU CHUN GI		
发明人	YOU, CHUN-GI		
IPC分类号	G02F1/1333 H01L27/14 G02F1/1345 G09G3/30 G09G3/36 G02F1/1362 G02F1/133 G02F1/1343 G02F1/136 G11C19/00 H01L21/3205 H01L21/768 H01L23/52 H01L23/532 H01L27/32 H01L29/786 H01L31/036		
CPC分类号	G02F1/13458 G02F1/136213 G02F1/136227 H01L27/3276		
优先权	1020030079693 2003-11-12 KR		
其他公开文献	US20090179204A1		
外部链接	Espacenet USPTO		

摘要(译)

提供一种包括第一至第三导电膜的显示面板，包括：第一信号线，包括包括第一导电膜的第一部分，包括第一至第三导电膜中的至少两个的中间部分（“中间部分膜”），以及与驱动电路的输出端子接触并且包括除了至少一个中间部分膜之外的中间部分膜的接触部分；与所述第一信号线交叉并且包括所述第二导电膜的第二信号线；连接到所述第一信号线和所述第二信号线的开关元件；以及连接到开关元件并包括第三导电膜的像素电极。

