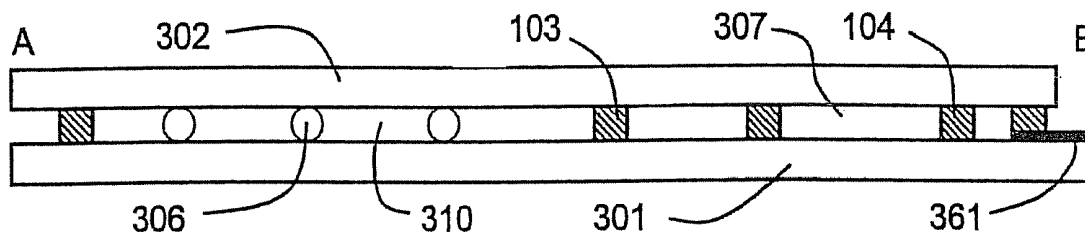


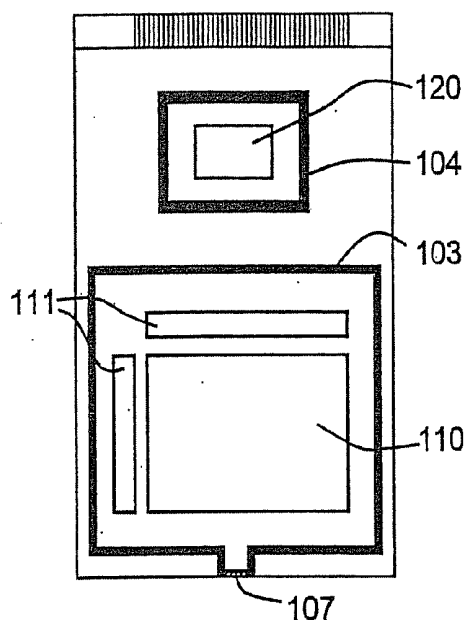


US 20110032462A1

(19) **United States**(12) **Patent Application Publication****Zhang et al.**(10) **Pub. No.: US 2011/0032462 A1**(43) **Pub. Date: Feb. 10, 2011**(54) **LIQUID CRYSTAL DISPLAY APPARATUS
CONTAINING IMAGE SENSOR AND
PROCESS FOR PRODUCING THE SAME**(75) Inventors: **Hongyong Zhang**, Kanagawa (JP);
Masayuki Sakakura, Kanagawa
(JP)Correspondence Address:
Husch Blackwell Sanders, LLP
Husch Blackwell Sanders LLP Welsh & Katz
120 S RIVERSIDE PLAZA, 22ND FLOOR
CHICAGO, IL 60606 (US)(73) Assignee: **Semiconductor Energy
Laboratory Co., Ltd.**(21) Appl. No.: **12/906,611**(22) Filed: **Oct. 18, 2010****Related U.S. Application Data**(60) Continuation of application No. 12/423,895, filed on
Apr. 15, 2009, now Pat. No. 7,817,232, which is a
division of application No. 11/641,516, filed on Dec.
19, 2006, now Pat. No. 7,528,912, which is a continu-
ation of application No. 11/140,700, filed on May 31,2005, now Pat. No. 7,158,199, which is a continuation
of application No. 10/743,482, filed on Dec. 22, 2003,
now Pat. No. 6,937,306, which is a continuation of
application No. 10/288,958, filed on Nov. 6, 2002, now
Pat. No. 6,680,764, which is a division of application
No. 09/143,109, filed on Aug. 28, 1998, now Pat. No.
6,496,240.(30) **Foreign Application Priority Data**

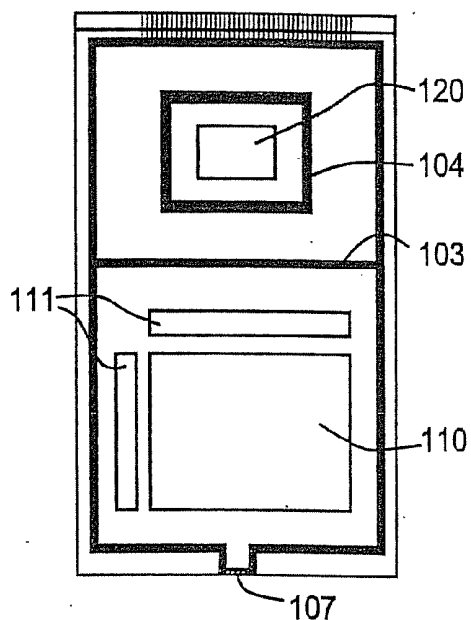
Sep. 2, 1997 (JP) 09-254316

Publication Classification(51) **Int. Cl.**
G02F 1/133 (2006.01)(52) **U.S. Cl.** 349/116(57) **ABSTRACT**A liquid crystal display apparatus containing an image sen-
sor, which comprises a liquid crystal display part comprising
an active matrix circuit, a peripheral driver circuit for driving
the active matrix circuit, and a sensor part, integrated on one
substrate, wherein the sensor part is sealed and protected with
a sealing part and a counter substrate.**CROSS SECTIONAL VIEW TAKEN ON LINE A - B**



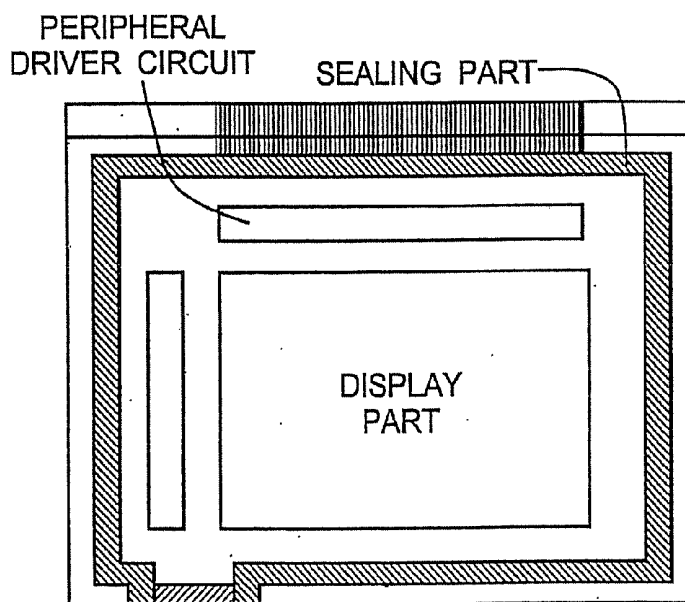
SEALING STRUCTURE OF
THE PRESENT INVENTION

FIG. 1A



SEALING STRUCTURE OF
THE PRESENT INVENTION

FIG. 1B



STRUCTURE OF CONVENTIONAL PANEL

FIG. 2

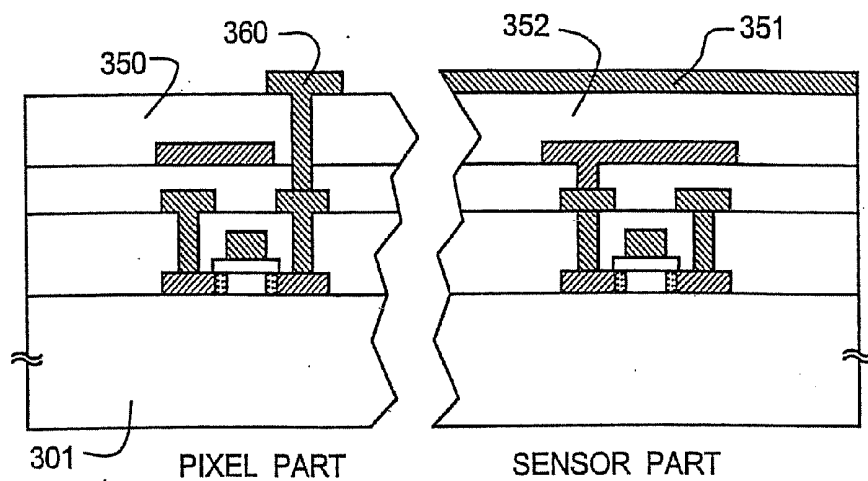


FIG. 3A

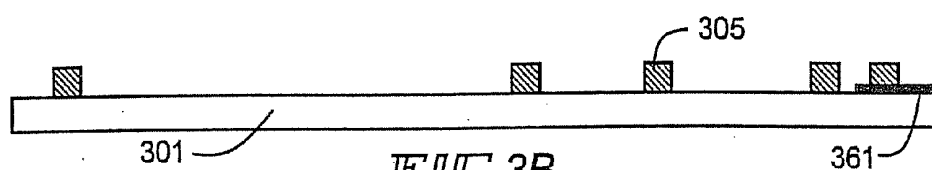


FIG. 3B

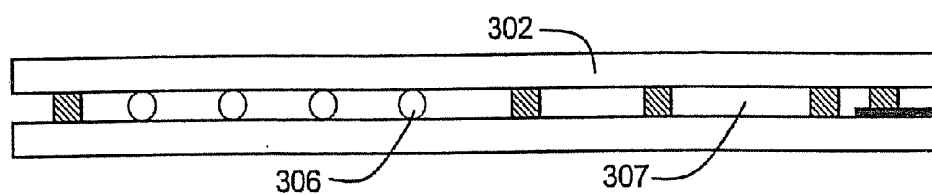


FIG. 3C

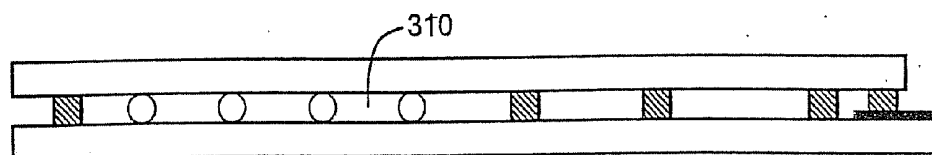
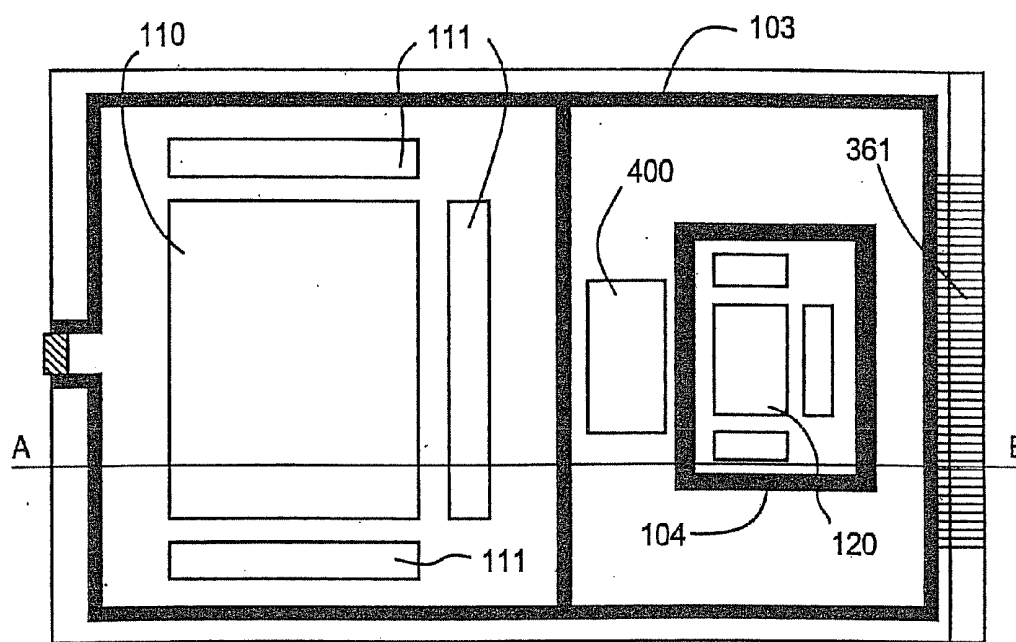
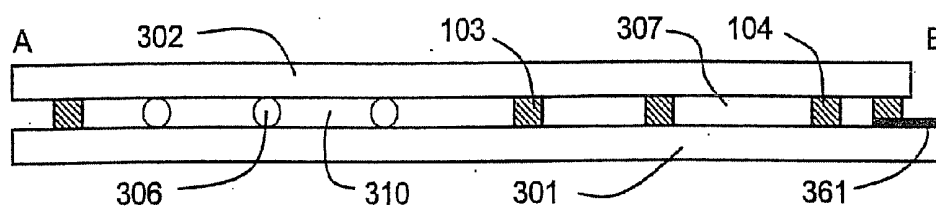


FIG. 3D



PLAN VIEW
FIG. 4A



CROSS SECTIONAL VIEW TAKEN ON LINE A - B
FIG. 4B

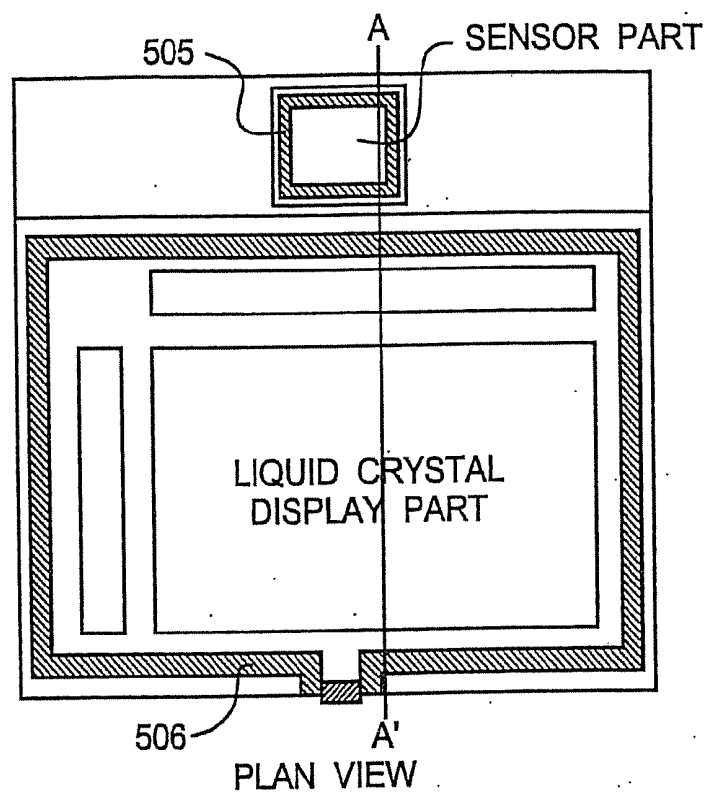


FIG. 5A

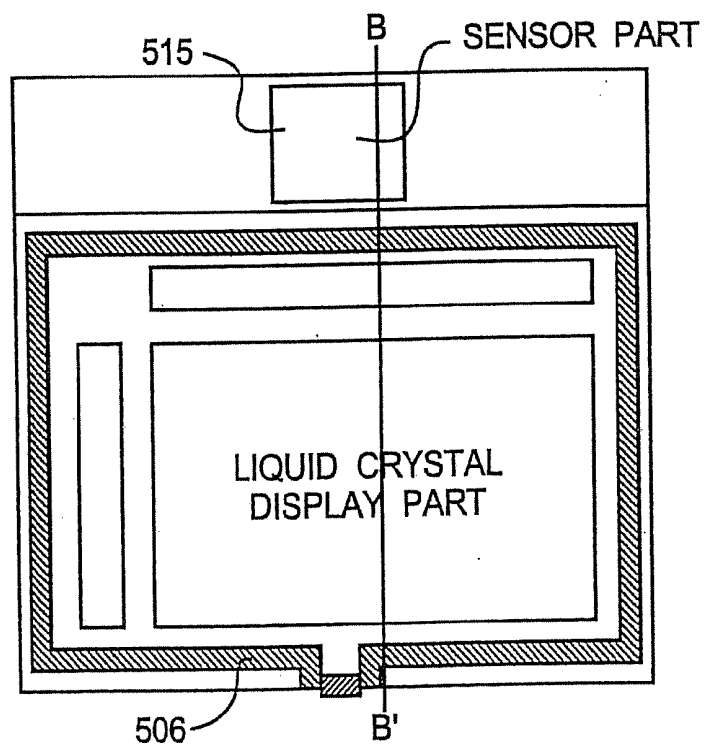


FIG. 5B

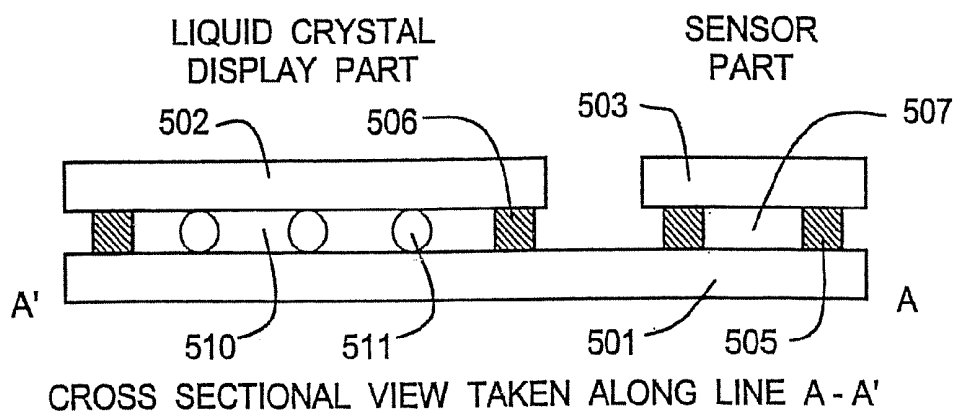


FIG. 6A

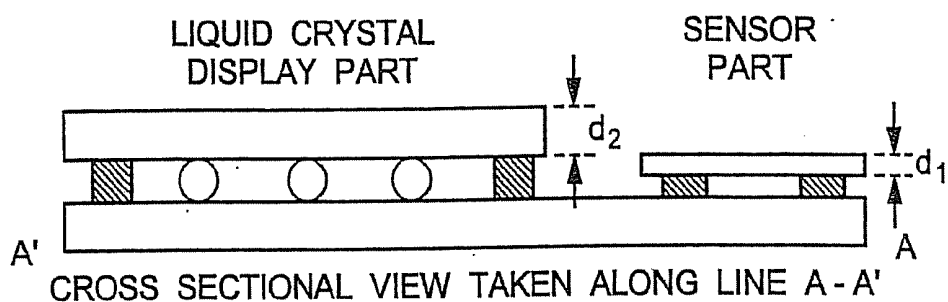


FIG. 6B

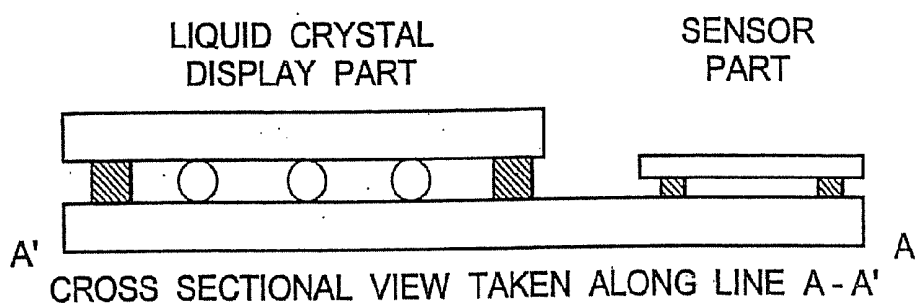


FIG. 6C

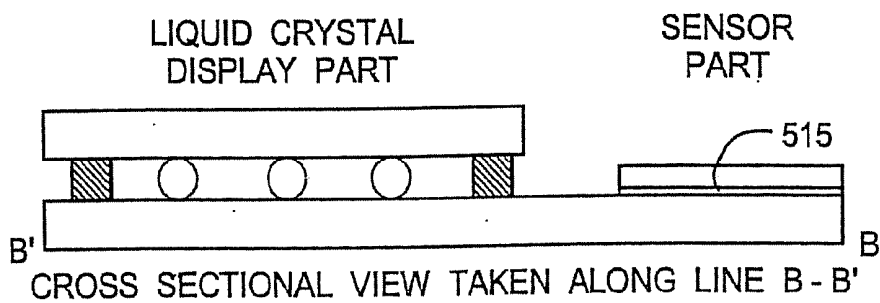


FIG. 6D

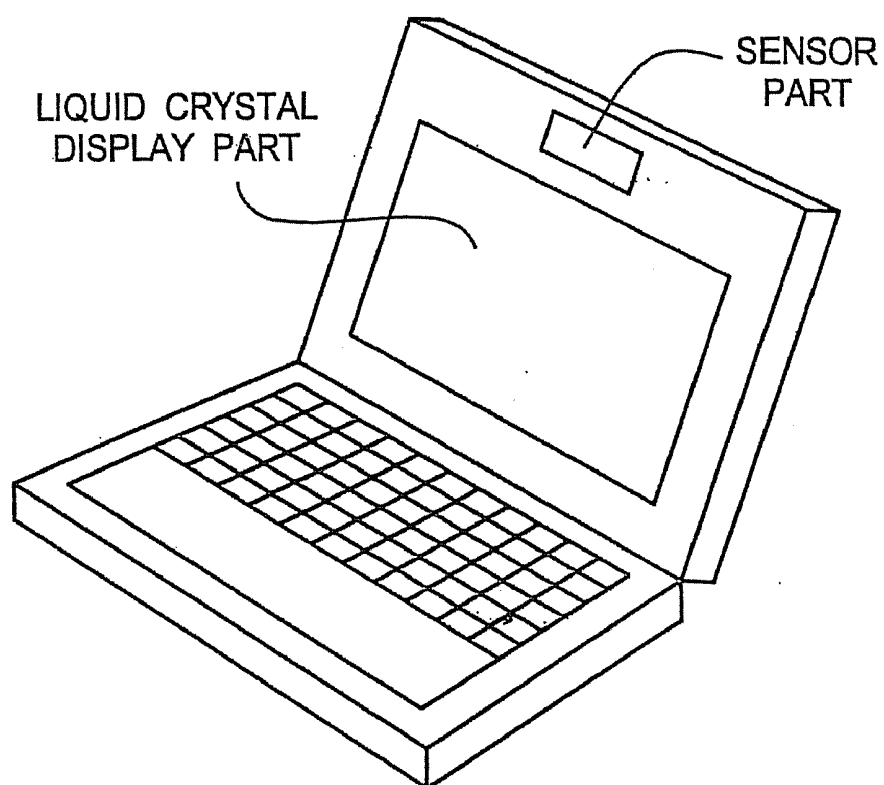


FIG. 7

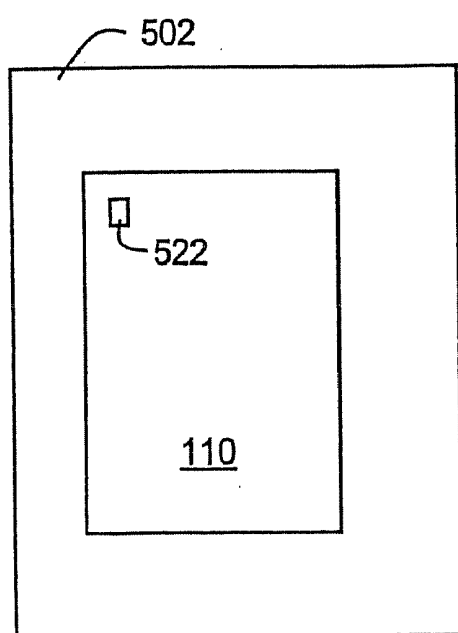


FIG. 8A

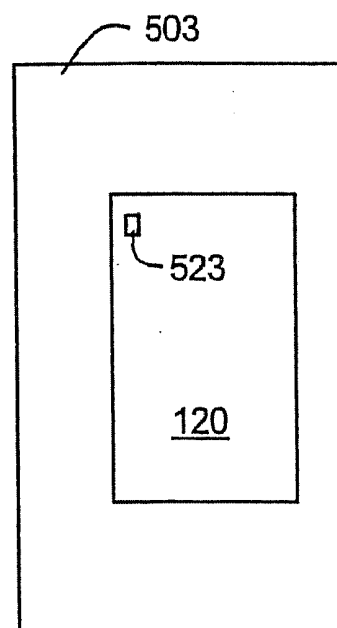


FIG. 8B

LIQUID CRYSTAL DISPLAY APPARATUS CONTAINING IMAGE SENSOR AND PROCESS FOR PRODUCING THE SAME

[0001] This application is a divisional of copending U.S. application Ser. No. 11/641,516 filed Dec. 19, 2006 which is a continuation of U.S. application Ser. No. 11/140,700 filed May 31, 2005 (now U.S. Pat. No. 7,158,199 issued Jan. 2, 2007) which is a continuation of U.S. application Ser. No. 10/743,482, filed on Dec. 22, 2003 (now U.S. Pat. No. 6,937,306 issued Aug. 30, 2005) which is a continuation of U.S. application Ser. No. 10/288,958, filed on Nov. 6, 2002 (now U.S. Pat. No. 6,680,764 issued Jan. 20, 2004) which is a divisional of U.S. application Ser. No. 09/143,109, filed on Aug. 28, 1998 (now U.S. Pat. No. 6,496,240 issued Dec. 17, 2002).

FIELD OF THE INVENTION

[0002] The present invention relates to an integrated liquid crystal display apparatus having a function of an image sensor, and particularly it relates to the constitution of an image sensor part.

BACKGROUND OF THE INVENTION

[0003] A liquid crystal panel, in which a liquid crystal is oriented by applying a voltage to a liquid crystal layer from pixel electrodes, to form an image on a display part, has been known.

[0004] A constitution of a conventional liquid crystal panel is briefly described below.

[0005] An element substrate comprises an insulating substrate having thereon a display part comprising thin film transistors and a peripheral circuit. The element substrate and a counter substrate are adhered by a sealing material with ensuring a gap between the substrates by a spacer. A liquid crystal is contained between the element substrate and the counter substrate.

[0006] The liquid crystal is sandwiched by the pair of substrates and surrounded by the sealing part.

[0007] As shown in FIG. 2, the sealing part of the panel is arranged to surround the display part or the display part and the peripheral driver circuit.

[0008] In the conventional constitution, the element substrate means a substrate in which an active matrix circuit and the peripheral circuit are provided. The counter substrate arranged as facing the element substrate, in which a counter electrode and a color filter are provided.

[0009] In the conventional constitution, a resin for sealing having an ultraviolet setting property or a thermosetting property is used as the sealing material.

[0010] An image sensor, on the other hand, has been widely used as an optical sensor converting an image to an electric signal in a copying machine, a digital still camera, a video camera and a facsimile machine.

[0011] Recently, a miniature system for incorporating an image and displaying the image is demanded. As a constitution meeting such a demand, a liquid crystal display device with which a sensor module such as a CCD is integrated is considered, but there are problems in consumption power (about 5 W), production cost and size.

[0012] The inventors of the invention intend to produce a liquid crystal panel and an image sensor on one substrate by using a MOS thin film transistor.

[0013] By using such a constitution, the apparatus can be miniaturized and of a low consumption power (about 50 mW) and low cost.

[0014] In the case where a liquid crystal panel and an image sensor are produced on one substrate, the arrangement of the panel and the image sensor and the constitution of the seal become important issue.

[0015] An object of the invention is to provide a liquid crystal display panel having a display part and an image sensor on one substrate, which has high reliability and an image sensor of low cost.

SUMMARY OF THE INVENTION

[0016] The structure of the liquid crystal panel shown in FIG. 1B corresponds to those shown in FIGS. 4A and 4B.

[0017] The invention relates to, as a first aspect, a liquid crystal display apparatus comprising a liquid crystal display part comprising an active matrix circuit, a peripheral driver circuit for driving the active matrix circuit, and a sensor part, integrated on one substrate, wherein the sensor part 120 has a sealed space 307 sealed by a sealing part 104 and a counter substrate 302. By employing such a constitution, the sealed space is completely shielded from an external atmosphere by the substrates and the sealing part.

[0018] Furthermore, the counter substrate may be adhered in an inert gas atmosphere to fill the sealed space with an inert gas (such as Ar and N₂), so as to prevent deterioration of the sensor part due to a reaction with oxygen contained in the air.

[0019] By sealing the sensor part with the sealing part and the counter substrate, an effect is obtained in that inclusion of the liquid crystal and dusts into the sensor part and a damage such as a flaw of the sensor part occurring on an injection step of the liquid crystal can be prevented.

[0020] The invention relates to, as a second aspect shown in FIG. 1A, a liquid crystal display apparatus comprising a liquid crystal display part comprising an active matrix circuit, a peripheral driver circuit 111 for driving the active matrix circuit, and a sensor part 120, integrated on one substrate,

[0021] wherein the sensor part 120 is surrounded by at least one sealing part 104, and

[0022] a sealing part 103 provided between the liquid crystal display part and the sensor part seals the liquid crystal and protects the sensor part.

[0023] By employing such a constitution, inclusion of the liquid crystal and dusts, generation of static charge, and an external impact can be prevented in the sensor part after the adhering step.

[0024] Alternatively, as shown in FIGS. 1B, 4A and 4B, the sensor part may be doubly surrounded by plural sealing parts. The outer sealing part functions as a dummy seal. By employing such a constitution, the sensor part 120 can be further prevented from dusts, static charge and external pressures, and the distance between the substrates can be sufficiently maintained. The sensor part may further be surrounded by plural sealing parts in three times, four times or more, or plural sealing parts may be arranged as a dummy seal outside the sealing part of the sensor part.

[0025] The invention relates to, as a third aspect, a liquid crystal display apparatus comprising a liquid crystal display part comprising an active matrix circuit, a peripheral driver circuit for driving the active matrix circuit, and a sensor part,

integrated on one substrate, wherein a spacer **306** is not present in the sensor part. When the number of the spacers in the sensor part is larger than that in the liquid crystal part, they become obstacles upon incorporating an image. Thus, as shown in FIG. 4B, it is preferred that no spacer is present between a receptor of the sensor part and the counter substrate. By employing such a constitution, an image can be incorporated with good quality while uniformly maintaining the distance between the substrates.

[0026] Since the sensor part is an element that reacts against external heat, it is preferred that the sensor part is arranged with a sufficient distance to a heat generating circuit such as the peripheral driver circuit, i.e., at a position that is less affected by heat.

[0027] By employing such a constitution, the sensor part can be protected from external electrical influence, thermal influence and other physical influence.

[0028] In the image sensor of the invention, as shown in FIG. 3A, photo carriers are generated by an amorphous silicon layer **352** having a large light absorption coefficient to visible lights, and the readout of the signals is controlled with a polycrystalline silicon TFT having a large mobility as a switching element.

[0029] In the invention, an image sensor formed by the thin film technique and the thin film transistors constituting the display part are formed on one substrate, and an apparatus is obtained at low cost.

[0030] The display apparatus of direct vision type containing an image sensor is becoming large scale in future. The substrate is also becoming large scale due to a multi-panels substrate for reducing the production cost.

[0031] On the other hand, the sensor part, which is demanded to have a large number of pixels and a miniaturized optical system, is being miniaturized to have a reduced pixel area, and therefore the difference in pixel area between the sensor part and the display part becomes large.

[0032] The invention relates to, as a fourth aspect, a liquid crystal display apparatus comprising a liquid crystal display part comprising an active matrix circuit, a peripheral driver circuit for driving the active matrix circuit, and a sensor part, integrated on one substrate, wherein a color filter formed on a counter substrate of the sensor part has a cell size that is smaller than that formed on a counter substrate of the display part, as shown in FIGS. 8A and 8B.

[0033] By employing such a constitution, a liquid crystal display panel can be obtained at low cost, in which the sensor part that has a small pixel area and can incorporate an image with good quality is formed on the same substrate as the liquid crystal display part.

[0034] The invention relates to, as a fifth aspect shown in FIG. 6B, a liquid crystal display apparatus comprising a liquid crystal display part comprising an active matrix circuit, a peripheral driver circuit for driving the active matrix circuit, and a sensor part, integrated on one substrate, wherein the thickness d_1 of a counter substrate of the sensor part is smaller than the thickness d_2 of a counter substrate of the liquid crystal display part.

[0035] By employing such a constitution, the influence on the optical system attached to the sensor part can be reduced. The thinner the thickness of the counter substrate of the sensor part is, the less the light is refracted, and thus the intensity of light can be maintained to obtain a liquid crystal display panel at low cost, in which the sensor part that has a small pixel area and can incorporate an image with good

quality is formed on the same substrate as the liquid crystal display part. The thin counter substrate of the sensor part in the invention includes colorless transparent substrates or films and is not limited to a glass substrate or a quartz substrate.

[0036] The invention relates to, as a sixth aspect shown in FIG. 6C, a liquid crystal display apparatus comprising a liquid crystal display part comprising an active matrix circuit, a peripheral driver circuit for driving the active matrix circuit, and a sensor part, integrated on one substrate, wherein the line width of the sealing part surrounding the sensor part is smaller than the line width of the sealing part surrounding the liquid crystal display part.

[0037] By employing such a constitution, when a thin substrate is used in the sensor part, the sealing part can be prevented from inclusion in the sensor part, and the substrate can be prevented from cracking.

[0038] The invention relates to, as a seventh aspect shown in FIG. 6D, a liquid crystal display apparatus comprising a liquid crystal display part comprising an active matrix circuit, a peripheral driver circuit for driving the active matrix circuit, and a sensor part, integrated on one substrate, wherein a counter substrate of the liquid crystal display part is maintained at a constant substrate distance by the sealing part and a spacer, and a counter substrate of the sensor part is in close contact with the substrate by an adhesive **515**.

[0039] By employing such a constitution, the sensor part can be completely isolated from the external atmosphere, and deterioration due to contact with the external atmosphere can be prevented. Because the space **507** between the counter substrate and the element substrate of the sensor part brings about refraction of light, the counter substrate and the element substrate is preferably in as close contact therewith as possible, as similar to the thickness of the counter substrate.

[0040] In order to have the fourth to seventh constitutions, precision is required in mating the sensor part having a small cell size and the counter substrate on the step of adhesion to the counter substrate. Therefore, the counter substrate of the sensor part and the counter substrate of the liquid crystal display part are adhered separately from each other.

[0041] The invention relates to a process for producing a liquid crystal display apparatus containing an image sensor and comprising a liquid crystal display part comprising an active matrix circuit, a peripheral driver circuit for driving the active matrix circuit, and a sensor part, integrated on one substrate, the process comprising in this order

[0042] a step of adhering a counter substrate of the liquid crystal display part,

[0043] a step of cutting the counter substrate of the liquid crystal display part, and

[0044] a step of adhering a counter substrate of the sensor part.

[0045] As shown in FIGS. 6A to 6D, the display part and the sensor part are formed on one substrate, but the counter substrates **502** and **503** are separated from each other in the display part and the sensor part.

BRIEF DESCRIPTION OF THE DRAWINGS

[0046] FIGS. 1A and 1B are diagrammatic plan views showing the structures of the liquid crystal panels of the invention.

[0047] FIG. 2 is a diagrammatic plan view showing the structure of the conventional liquid crystal panel.

[0048] FIGS. 3A to 3D are fragmentary sectional views showing the production step in Example 1.

[0049] FIG. 4A is a plan view showing the structure of the liquid crystal panel of Example 1. FIG. 4B is a cross sectional view taken on line A-B of FIG. 4A.

[0050] FIG. 5A is a diagrammatic plan view showing the structures of the liquid crystal panels of Examples 2 to 3. FIG. 5B is a diagrammatic plan view showing the structure of the liquid crystal panel of Example 4.

[0051] FIGS. 6A to 6C are cross sectional views showing the structures of the liquid crystal panels of Examples 2 to 3 taken on line A-A₁ of FIG. 5A. FIG. 6D is a cross sectional view showing the structure of the liquid crystal panel of Example 4 taken on line B-B₁ of FIG. 5B.

[0052] FIG. 7 is a schematic perspective view showing an example of an application of the invention.

[0053] FIG. 8A shows a cell size of a color filter on a counter substrate of a display part while FIG. 8B shows a cell size of a color filter on a counter substrate of a sensor part.

DETAILED DESCRIPTION OF THE PREFERRED EMBODIMENTS

[0054] The invention is described in more detail with reference to the following examples, but the invention is not construed as being limited thereto.

Example 1

[0055] The production process of the panel is described by referring to FIGS. 3A to 3C. The completion drawing is shown in FIGS. 4A, 4B and 1B.

[0056] An element substrate 301 is prepared.

[0057] In this Example, the element substrate 301 is a substrate shown in FIG. 3A having an active matrix circuit and a peripheral circuit each comprising a TFT part, and a sensor part. The element substrate is not limited if it has a pixel region and a peripheral circuit each comprising TFT elements.

[0058] The sensor part comprises a photoelectric conversion layer 352 and a photoelectric conversion element.

[0059] The sensor part is formed simultaneously with the formation of the thin film transistors constituting the active matrix circuit and the peripheral circuit.

[0060] An oriented film (not shown in Figure) for the orientation of the liquid crystal is coated on the element substrate and a counter substrate, and then baked, followed by subjecting to a rubbing treatment.

[0061] A seal pattern and a dummy seal part are provided on the element substrate with a sealing material 305 by using a seal printing machine or a seal dispenser, as shown in FIG. 3B. In this Example, while the seal pattern is provided on the element substrate, a step where the seal pattern is provided on the counter substrate may be employed.

[0062] As the constitution of each of the panels, the sealing part 103 is arranged to surround the display part 110 and the peripheral driver circuit region 111. The sensor part is arranged to be surrounded by the sealing part 104.

[0063] A seal opening 107 is provided at least a part of the sealing part 103 of each of the panels, so as to be capable of injecting a liquid crystal material from the opening to the inside of the sealing part.

[0064] A solution of an epoxy resin and a phenol hardening agent dissolved in an ethyl cellosolve is used as the material for the sealing part in this Example, but it is not particularly

limited if it is a resin for sealing having an ultraviolet setting property or a thermosetting property.

[0065] Spacers 306 for maintaining the distance between the substrates are scattered selectively on the display part. Spherical bodies having a diameter of 5 μ m comprising a polymer series material, a glass series material or a silica series material are used as the spacer.

[0066] The counter substrate 302 is prepared.

[0067] The counter substrate 302 is a substrate provided to be arranged as facing the element substrate, on which a counter electrode and a color filter are provided.

[0068] The element substrate provided by the above-described steps and the counter substrate are superimposed and adhered by heat press, as shown in FIG. 3C.

[0069] An injection inlet for a liquid crystal material is provided by a cutting step using a scribe and a breaker, in such a manner that one or more of the inlet is provided on a side where both of the edges of the pair of panels are matched.

[0070] Since a leader line of wiring is provided in this Example, the side where the leader line is provided is also cut by a scribe.

[0071] A step of injecting the liquid crystal material 310 into the inside of the panels constituting the liquid crystal apparatus is conducted by a vacuum injection method. The vacuum injection method is an injection method for a liquid crystal material utilizing capillarity and difference in pressure.

[0072] The liquid crystal material 310 is injected by the vacuum injection method onto the pixel region and the peripheral driver circuit region inside the sealing part of the panel through the injection inlet.

[0073] As the liquid crystal material, a nematic liquid crystal, a smectic liquid crystal, a cholesteric liquid crystal and other various liquid crystals may be used. A nematic liquid crystal is used in this Example.

[0074] A pressure is applied to the panels from the both sides thereof to expel an excessive amount of the liquid crystal material, and with maintaining the applied pressure, a sealing resin 118 of ultraviolet setting type or thermosetting type is coated on the injection inlet, followed by removing the pressure. Thus, the sealing resin is slightly drawn into the inside of the injection inlet. The sealing resin is hardened in this state to seal the injection inlet, as shown in FIG. 3D.

[0075] A panel comprising a pair of substrates sandwiching a liquid crystal as shown in FIGS. 1B, 4A and 4B is obtained by the above-described procedures. Polarizers are attached on both sides of the panel, and wiring electrically connecting to the outside is provided, to complete the liquid crystal display apparatus.

[0076] An optical system is attached to the sensor part, to complete the liquid crystal display apparatus containing an image sensor.

Example 2

[0077] In this Example, the case where the counter substrate of the sensor part and the counter substrate of the display part are separated from each other is exemplified.

[0078] The basic constitution of this Example is the same as that produced in Example 1, and therefore the description is made noting the differences.

[0079] In the final structure of this Example shown in FIG. 6A, the display part and the sensor part are formed on one

substrate **501**, but the counter substrate **502** of the display part and the counter substrate **503** of the sensor part are separated from each other.

[0080] In this case, the cell size of the color filter of the sensor part is required to be smaller than the cell size of the color filter of the liquid crystal display part, as shown in FIGS. **8A** and **8B**. In FIG. **8B**, a cell size **523** of a color filter on a counter substrate **503** of a sensor part **120** is smaller than a cell size **522** of a color filter on a counter substrate **502** of a display part **110** in FIG. **8A**.

[0081] Therefore, it is preferred that the cell size of the counter substrate of the sensor part and the cell size of the counter substrate of the liquid crystal display part are different from each other. The production method thereof may be either a method where a counter substrate on which color filters having different cell sizes are formed on one substrate is used, or a method where the counter substrate of the sensor part and the counter substrate of the display part are separately adhered.

Example 3

[0082] In this Example, the case where a substrate thinner than the counter substrate of the display part is used as the counter substrate of the sensor part is exemplified.

[0083] The basic constitution of this Example is the same as that produced in Example 2, and therefore the description is made noting the differences.

[0084] The constitution of this Example is shown in FIG. **6C**.

[0085] The thickness of the counter substrate of the sensor part of this Example is smaller than the counter substrate of the liquid crystal display part and is from 0.1 to 2.0 mm, preferably from 0.1 to 1.0 mm. The line width of the sealing part surrounding the sensor part is smaller than the line width of the sealing part surrounding the liquid crystal display part (from 1 to 1.3 mm).

[0086] The thinner counter substrate of the sensor part in this Example is not limited to a glass substrate if it is a colorless transparent substrate or a film transmitting light.

[0087] By employing such a constitution, the influence on the optical system attached to the sensor part can be reduced. The thinner the thickness of the counter substrate of the sensor part is, the less the light is refracted, and thus the intensity of light can be maintained to obtain a liquid crystal display panel at low cost, in which the sensor part that has a small pixel area and can incorporate an image with good quality is formed on the same substrate as the liquid crystal display part.

[0088] By making the line width of the sealing part surrounding the sensor part smaller than the line width of the sealing part surrounding the liquid crystal display part, the distance between the substrate of the sensor part and that of the liquid crystal display part are differentiated.

Example 4

[0089] In this Example, the case where the counter substrate of the sensor part and the counter substrate of the display part are in close contact with each other by using an adhesive is exemplified.

[0090] The basic constitution of this Example is the same as that produced in Example 2, and therefore the description is made noting the differences.

[0091] The constitution of this Example is shown in FIGS. **5B** and **6D**.

[0092] By employing such a constitution, the sensor part can be completely isolated from the external atmosphere, and deterioration due to contact with the external atmosphere can be prevented. The distance between the sensor part and the counter substrate of the sensor part is from 0 to 5 μm , preferably 4 μm or less, and it is ideal that the counter substrate and the element substrate are in completely close contact with each other.

Example 5

[0093] In this Example, an electronic apparatus utilizing the liquid crystal panel according to the invention is exemplified in FIG. **7**. The electronic apparatus is a product carrying the liquid crystal panel containing an image sensor.

[0094] FIG. **7** shows a notebook personal computer, in which the invention can be applied to a liquid crystal display having an image sensor integrated therein.

[0095] In the invention, because the image sensor is provided on the same substrate as the pixel matrix and the peripheral driver circuit, miniaturization and weight saving of the display apparatus having a display function and an image pickup function can be realized. Furthermore, because the sensor part and the display part are simultaneously formed, the display apparatus can be provided at low cost.

[0096] By employing the constitution of the invention, the inclusion of the liquid crystal into the sensor part on the injection step of the liquid crystal is prevented, and after the adhesion step, the sensor part is protected from the liquid crystal, dusts and an external impacts. Thus, a durable liquid crystal display apparatus containing an image sensor, in which the sensor part is well operated, can be obtained.

[0097] Furthermore, when the optical system is attached to the sensor part, the optical system can be sufficiently fixed, and the distance between the optical system and the sensor part can be maintained at a constant value by the sealing part and the counter substrate. Thus, an image of good quality with a stable focal distance can be obtained.

1-9. (canceled)

10. An electronic apparatus comprising:

- a first substrate;
- a display region provided over the first substrate;
- a sensor region including a photoelectric conversion layer provided over the first substrate;
- a counter second substrate provided over the display region; and
- a counter third substrate provided over the sensor region, wherein a gap between the first substrate and the counter second substrate is greater than a gap between the first substrate and the counter third substrate.

11. An electronic apparatus according to claim **10**, wherein the electronic apparatus is incorporated into a personal computer.

12. An electronic apparatus according to claim **10**, wherein the sensor region comprises a switching transistor.

13. An electronic apparatus according to claim **10**, wherein the sensor region comprises a semiconductor film comprising amorphous silicon.

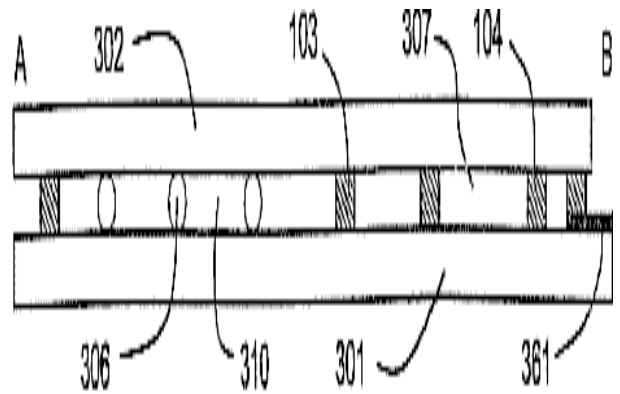
14. An electronic apparatus according to claim **10**, wherein the gap between the first substrate and the counter third substrate is less than 5 micro meter.

* * * * *

专利名称(译)	含有图像传感器的液晶显示装置及其制造方法		
公开(公告)号	US20110032462A1	公开(公告)日	2011-02-10
申请号	US12/906611	申请日	2010-10-18
[标]申请(专利权)人(译)	株式会社半导体能源研究所		
申请(专利权)人(译)	半导体能源研究所有限公司.		
当前申请(专利权)人(译)	半导体能源研究所有限公司.		
[标]发明人	ZHANG HONGYONG SAKAKURA MASAYUKI		
发明人	ZHANG, HONGYONG SAKAKURA, MASAYUKI		
IPC分类号	G02F1/133 G02F1/1339 G02F1/1333 G02F1/136 G02F1/1362 G02F1/1368 G06F1/16 G09F9/30		
CPC分类号	G02F1/133 G02F1/1339 G02F1/1362 G06F1/1686 G02F2001/13312 G06F1/1616 G06F1/1637 G02F1/136277		
优先权	1997254316 1997-09-02 JP		
其他公开文献	US8031307		
外部链接	Espacenet USPTO		

摘要(译)

一种包含图像传感器的液晶显示装置，其包括包括有源矩阵电路的液晶显示部分，用于驱动有源矩阵电路的外围驱动电路，以及集成在一个基板上的传感器部分，其中传感器部分被密封并用密封部分和对衬底保护。



CROSS SECTIONAL VIEW TAKEN ON LINE A-B