



US 20010008781A1

(19) **United States**(12) **Patent Application Publication** (10) **Pub. No.: US 2001/0008781 A1****Lee et al.**(43) **Pub. Date: Jul. 19, 2001**(54) **METHOD FOR FORMING A TFT IN A
LIQUID CRYSTAL DISPLAY**(76) Inventors: **Joo-Hyung Lee**, Seoul (KR); **Mun-Pyo
Hong**, Sungnam-shi (KR); **Chan-Joo
Youn**, Seoul (KR); **Byung-Hoo Jung**,
Anyang-shi (KR); **Chang-Won Hwang**,
Sungnam-shi (KR)

Correspondence Address:

**HOWREY SIMON ARNOLD & WHITE LLP
BOX 34
1299 PENNSYLVANIA AVENUE NW
WASHINGTON, DC 20004 (US)**(21) Appl. No.: **09/793,541**(22) Filed: **Feb. 27, 2001****Related U.S. Application Data**(62) Division of application No. 09/323,030, filed on Jun.
1, 1999, now Pat. No. 6,225,150.(30) **Foreign Application Priority Data**May 29, 1998 (KR) 98-19760
Nov. 12, 1998 (KR) 98-48365
Dec. 8, 1998 (KR) 98-53796**Publication Classification**(51) **Int. Cl.⁷** **H01L 21/00**
(52) **U.S. Cl.** **438/153**(57) **ABSTRACT**

A double level gate layer with an undercut lower gate layer can be formed by using the etching rate difference between the upper gate layer and the lower gate layer in a polycrystalline Si type TFT LCD that has P-channel TFTs and N-channel TFTs. An LDD structure can be easily formed by using an upper gate layer as ion implant mask during the N-type ion implantation. LDD size is decided by the skew size between the upper gate layer and the lower gate layer. Furthermore, a photolithography step necessary for masking the ion implantation can be skipped.

Fig. 1

(Prior Art)

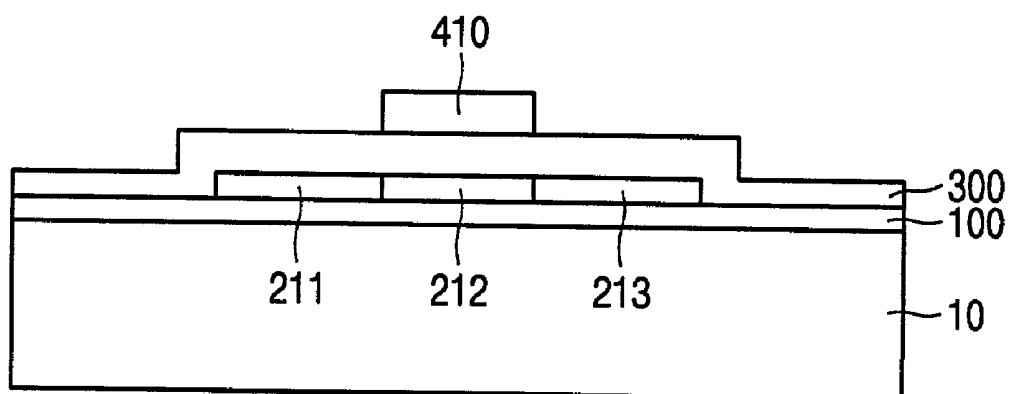


Fig. 2A

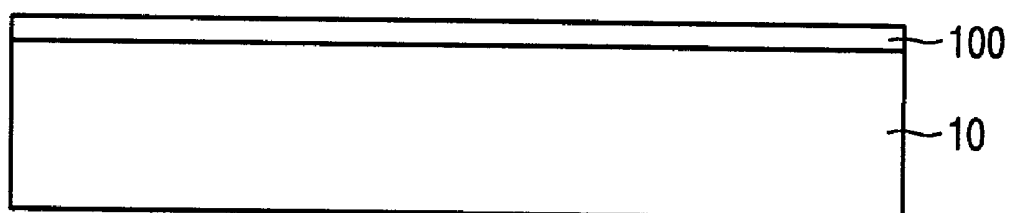


Fig. 2B

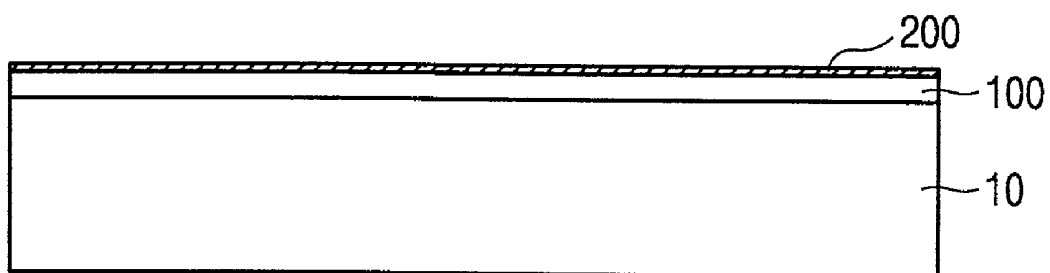


Fig. 2C

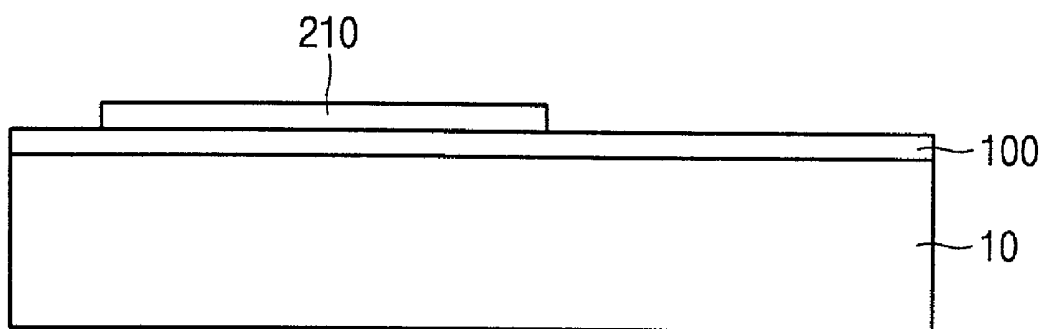


Fig. 2D

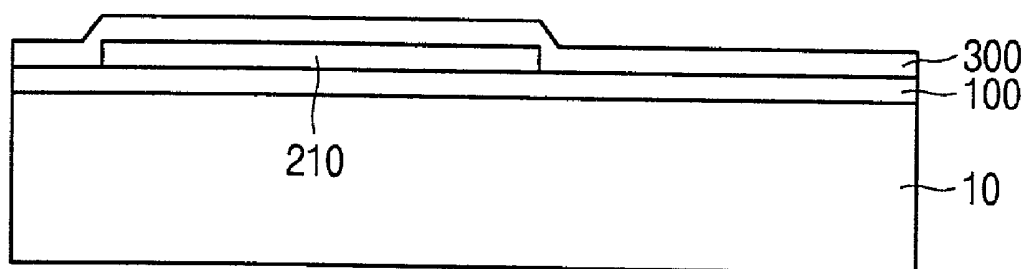


Fig. 2E

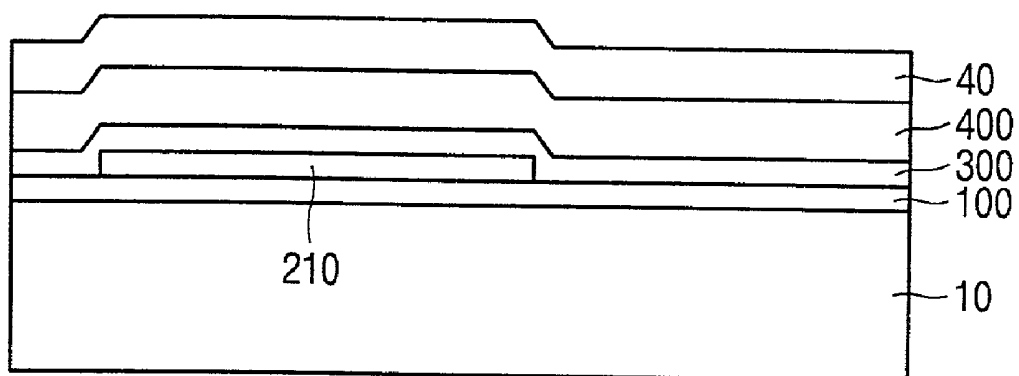


Fig. 2F

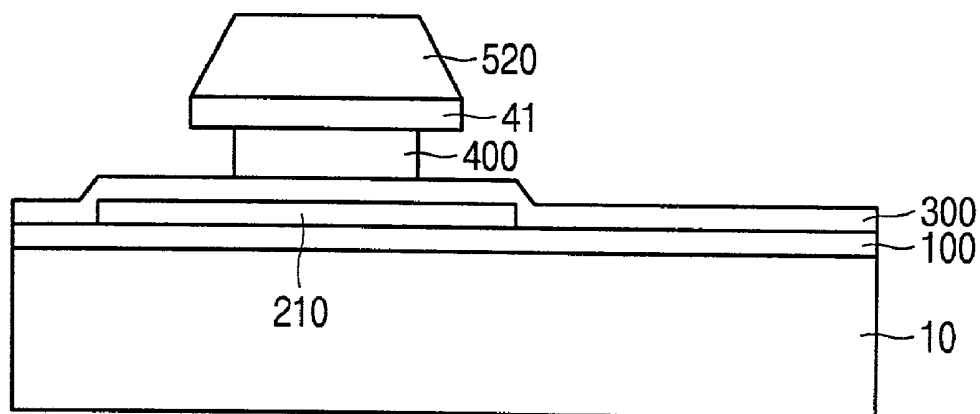


Fig. 2G

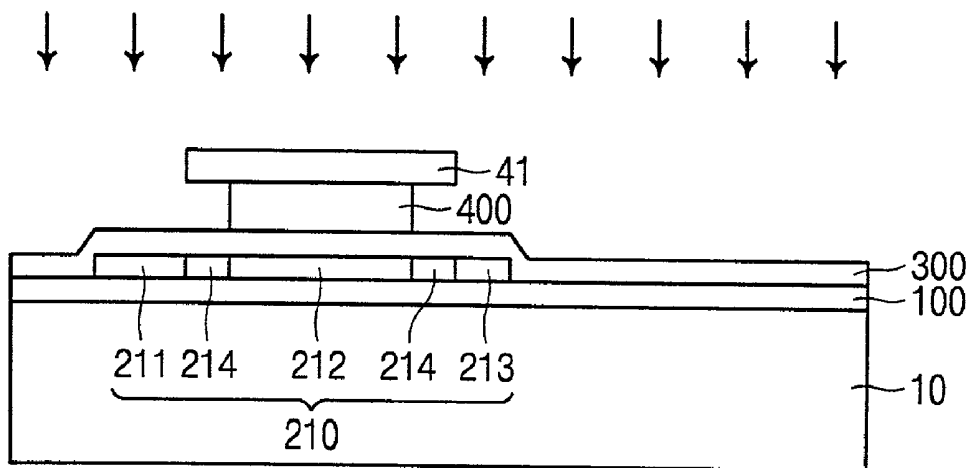


Fig. 2H

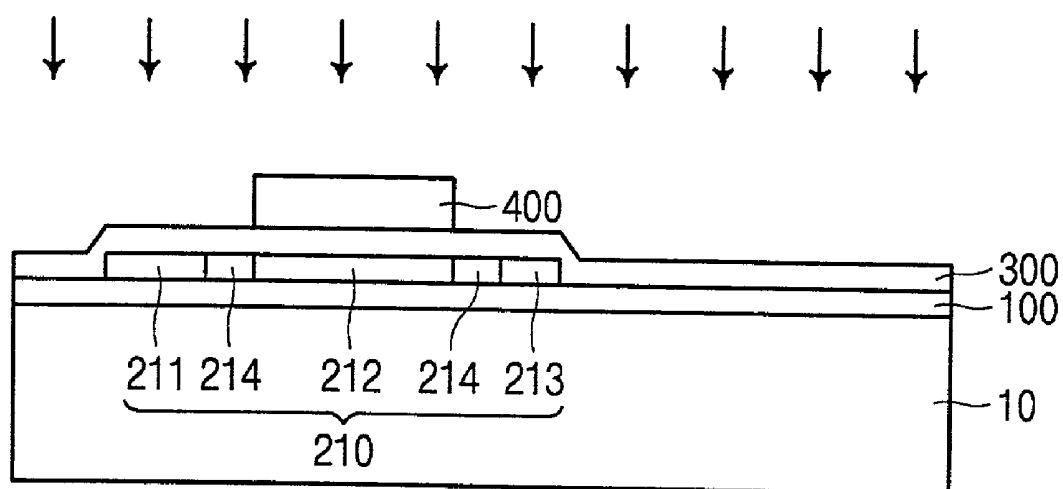


Fig. 3A

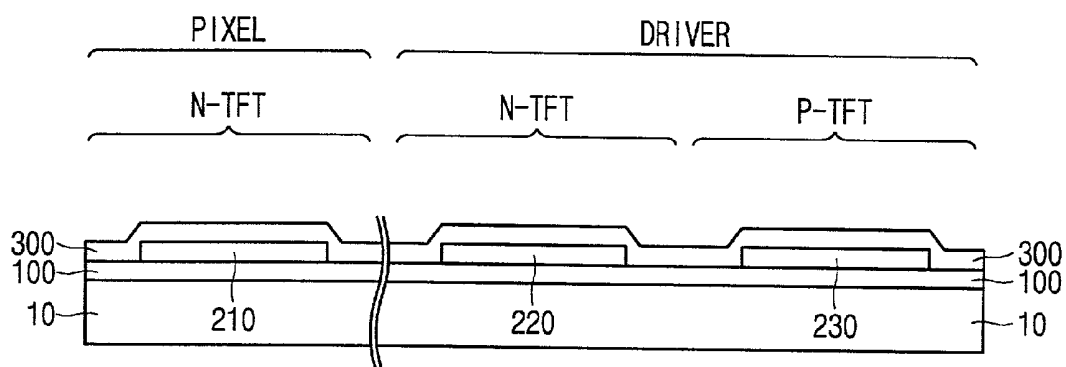


Fig. 3B

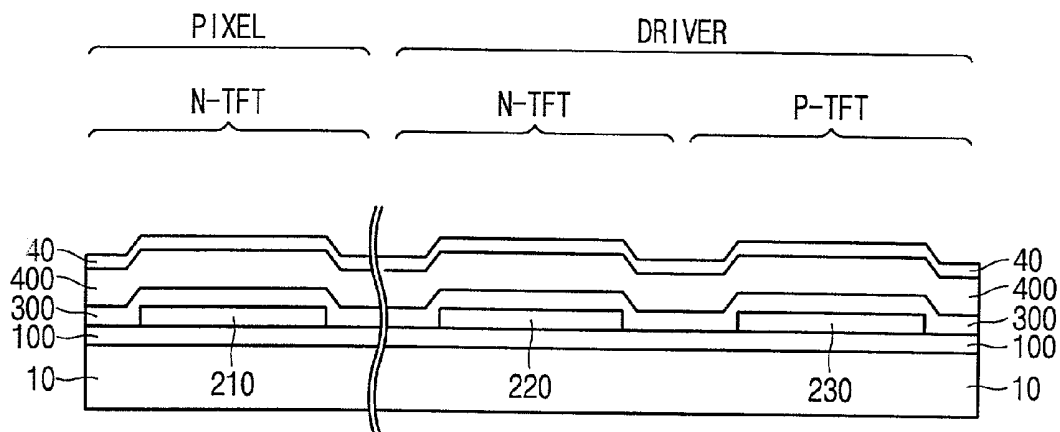


Fig. 3C

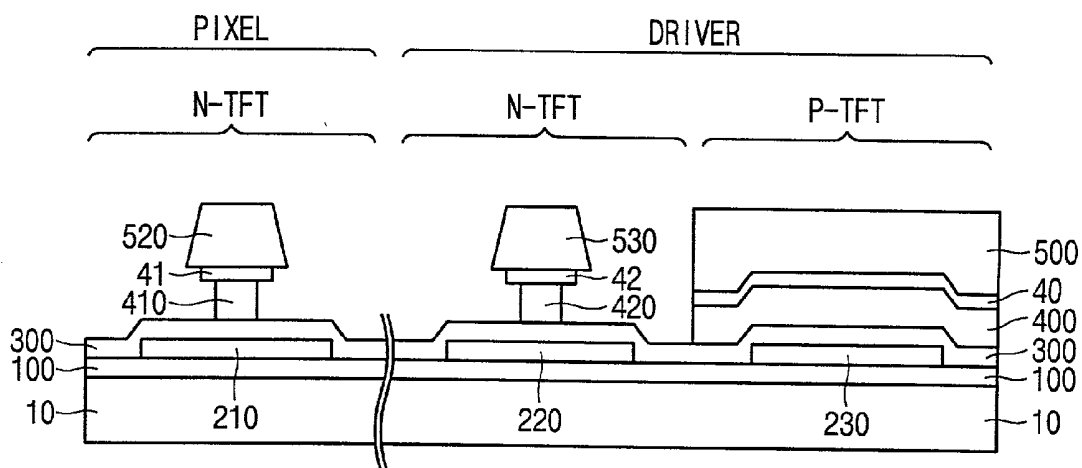


Fig. 3D

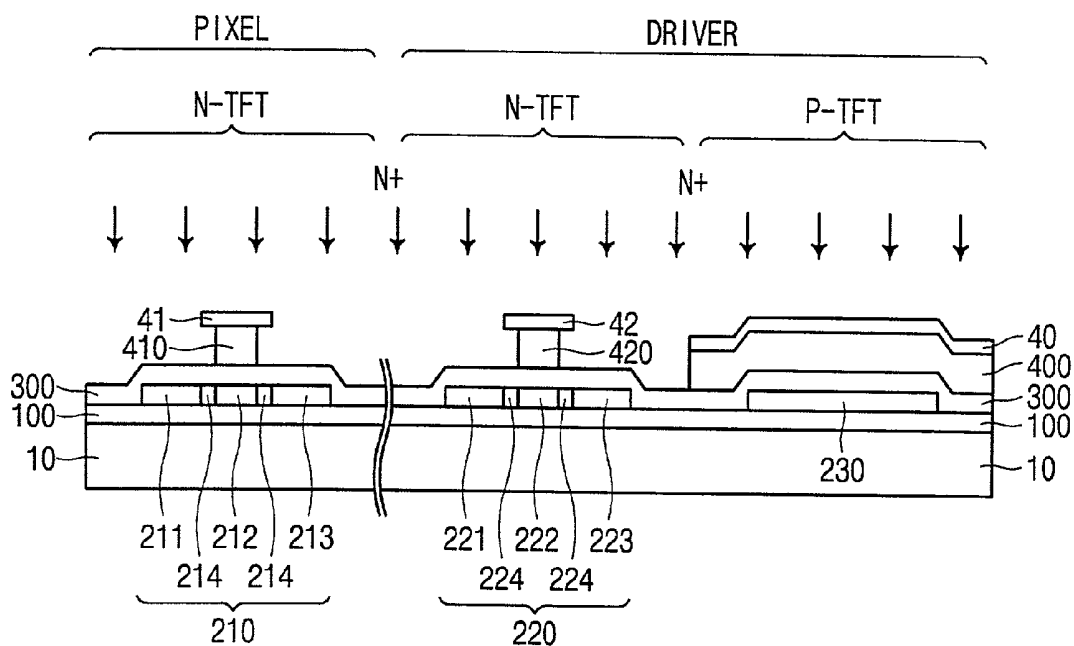


Fig. 3E

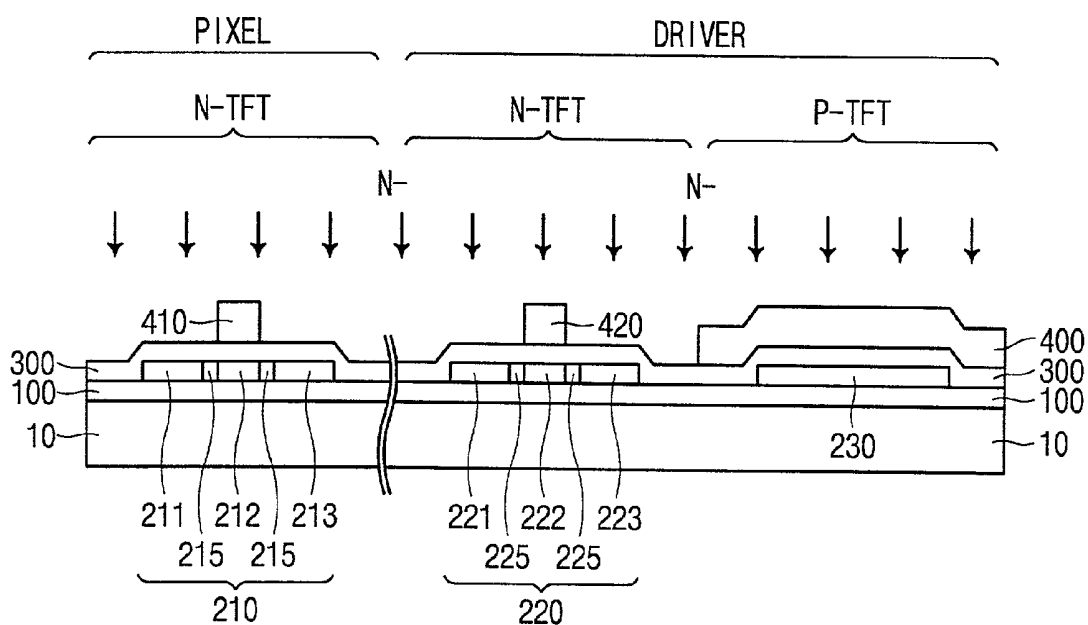


Fig. 3F

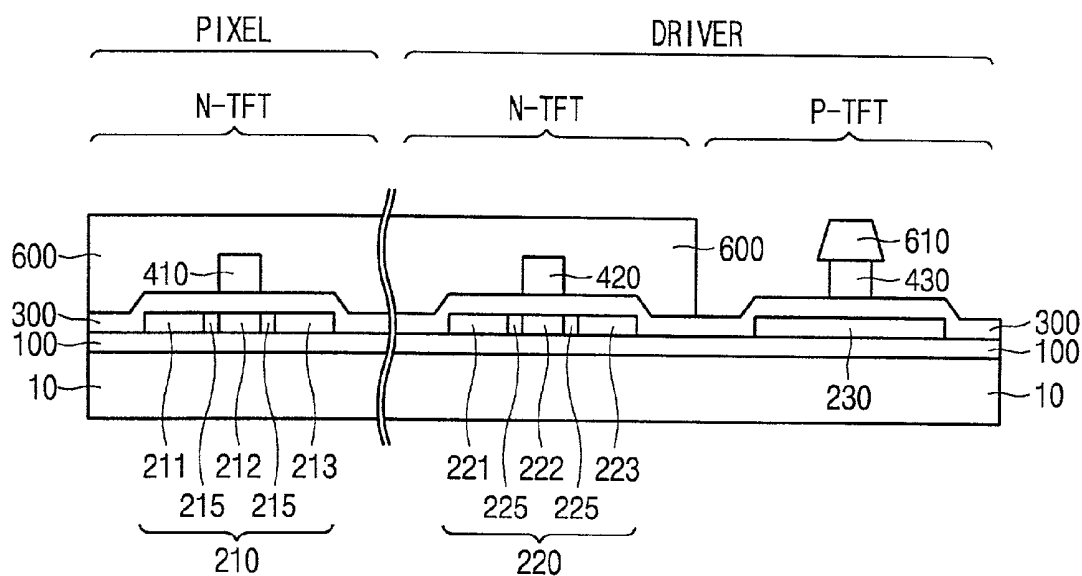


Fig. 3G

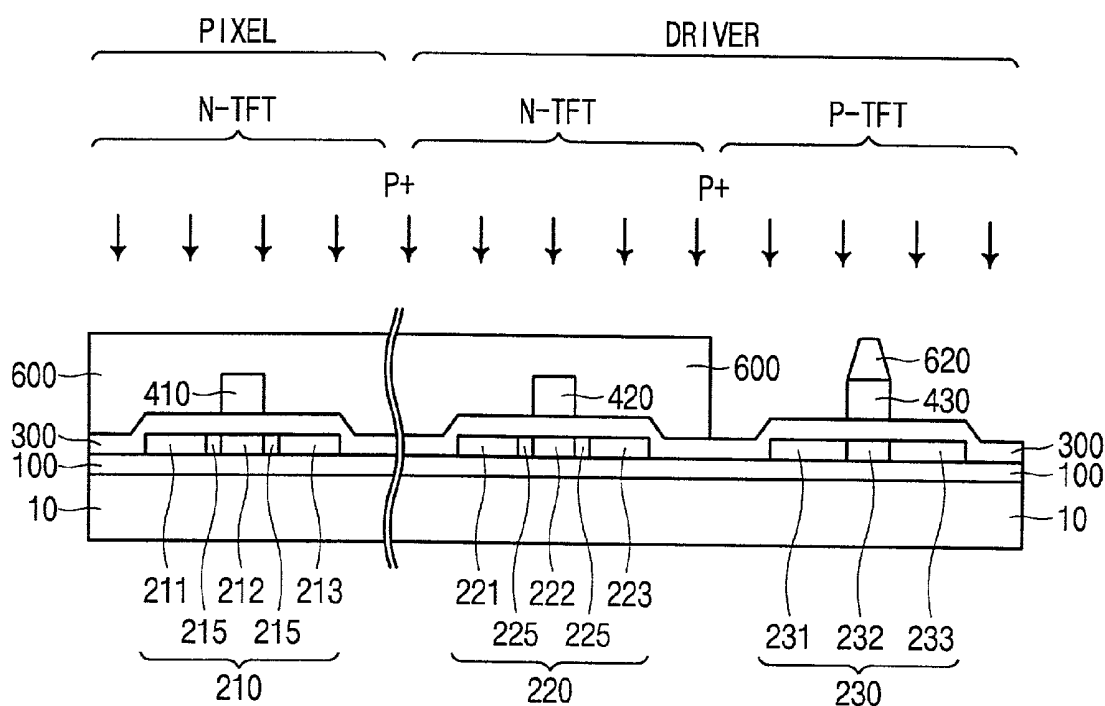


Fig. 3H

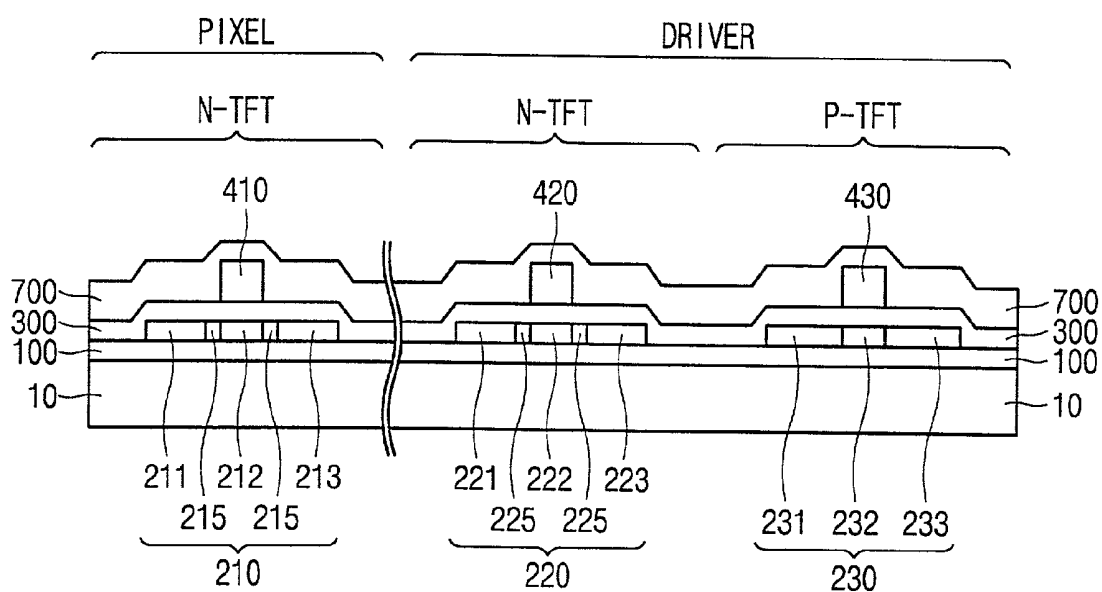


Fig. 3I

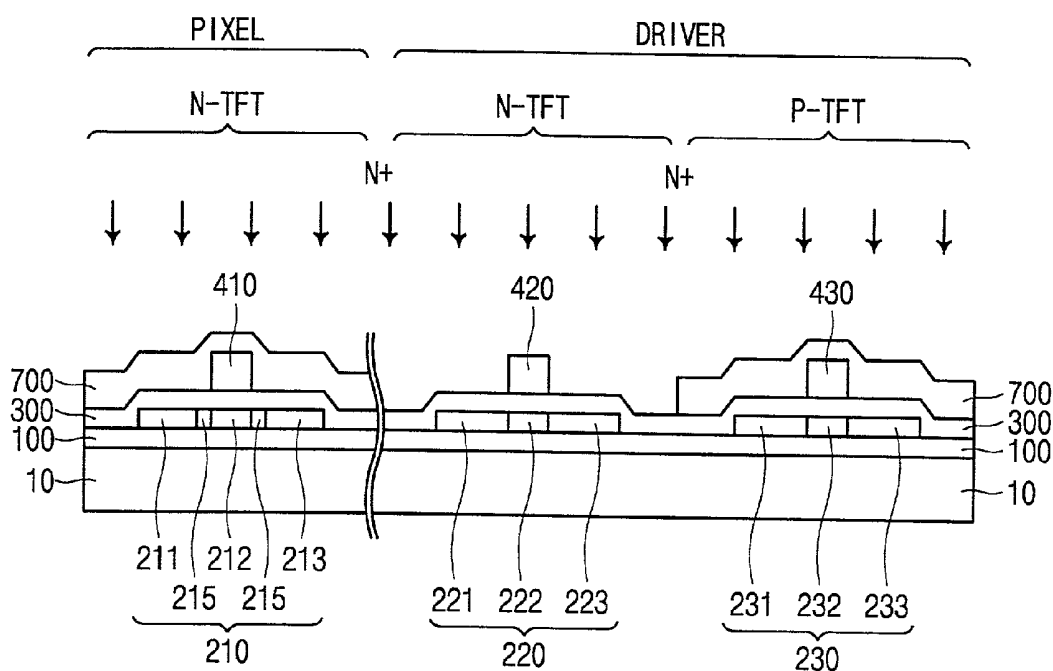


Fig. 3J

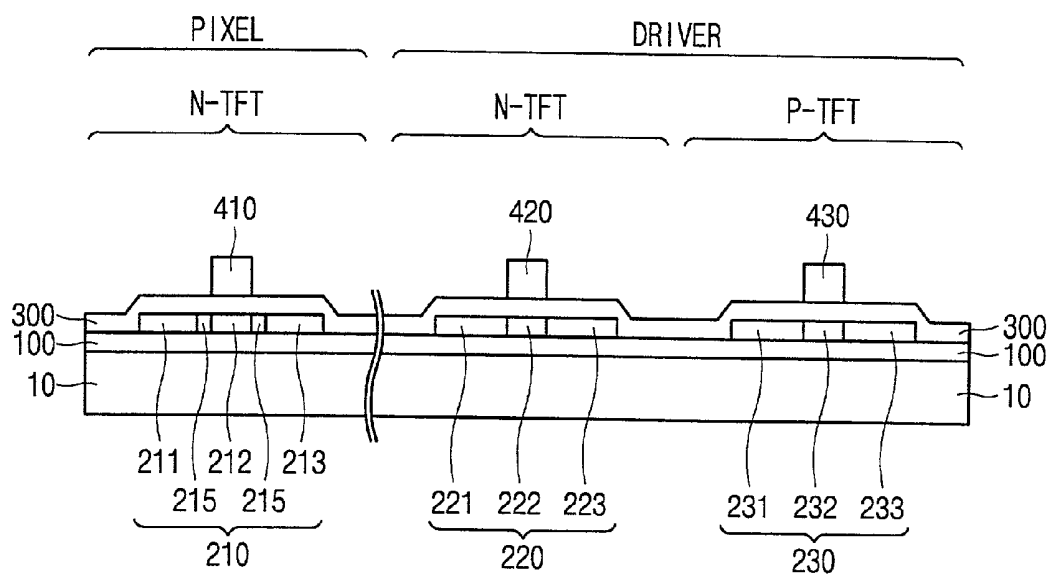


Fig. 4

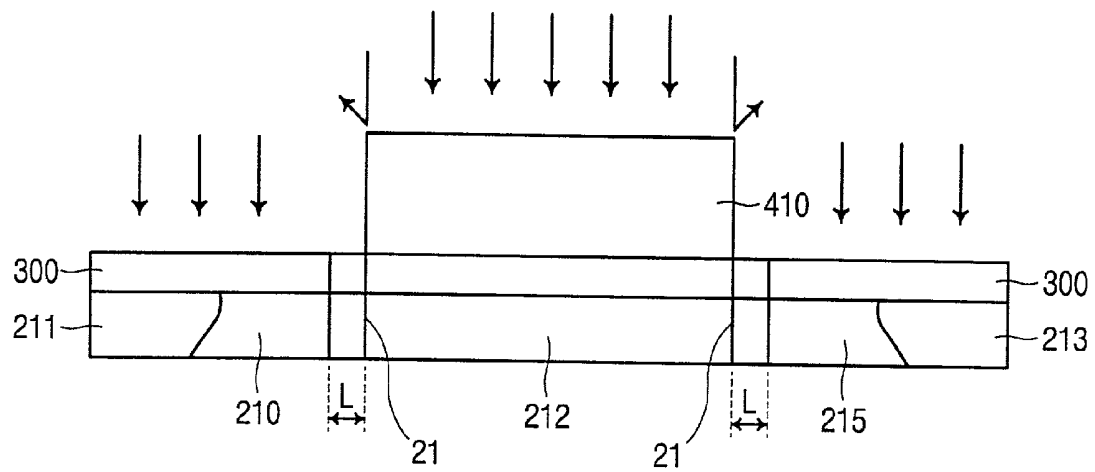


Fig. 5A

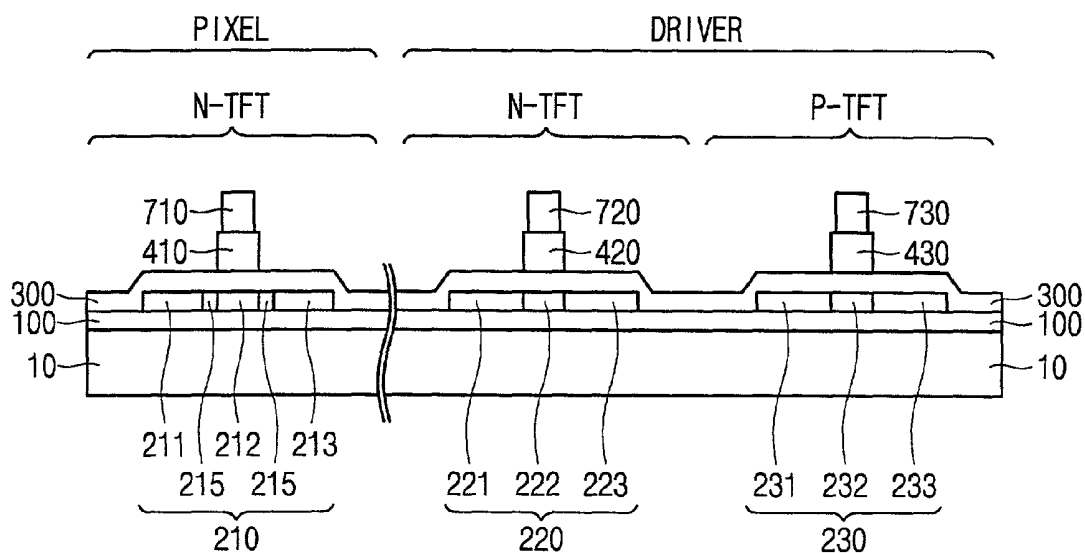


Fig. 5B

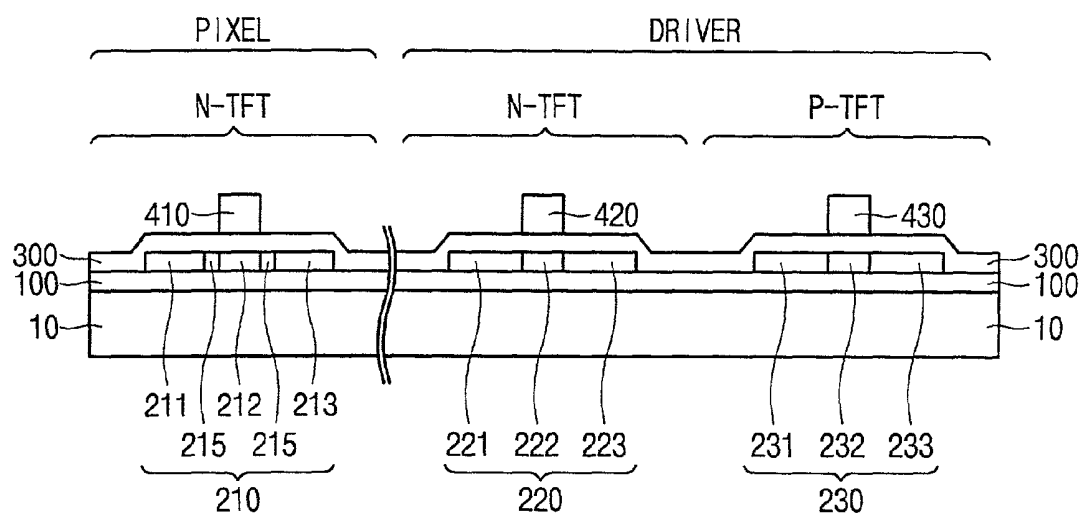


Fig. 6A

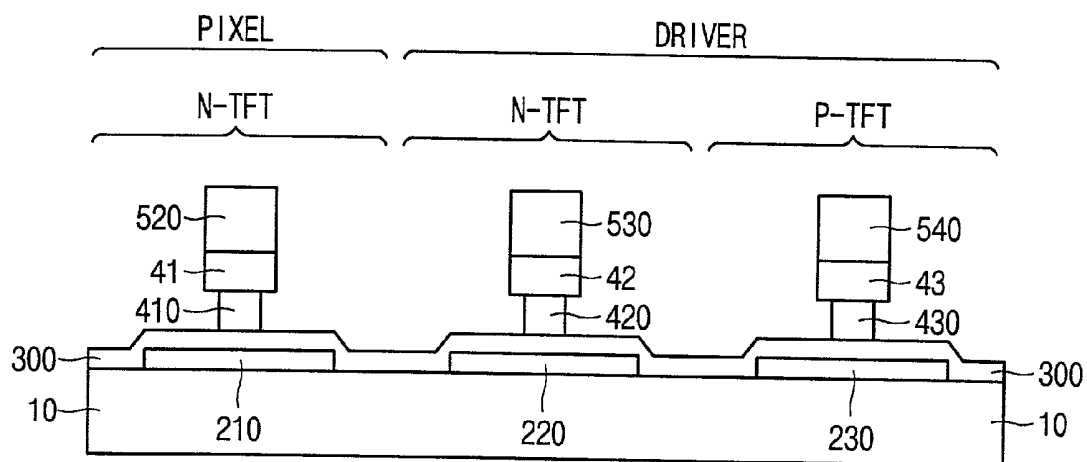


Fig. 6B

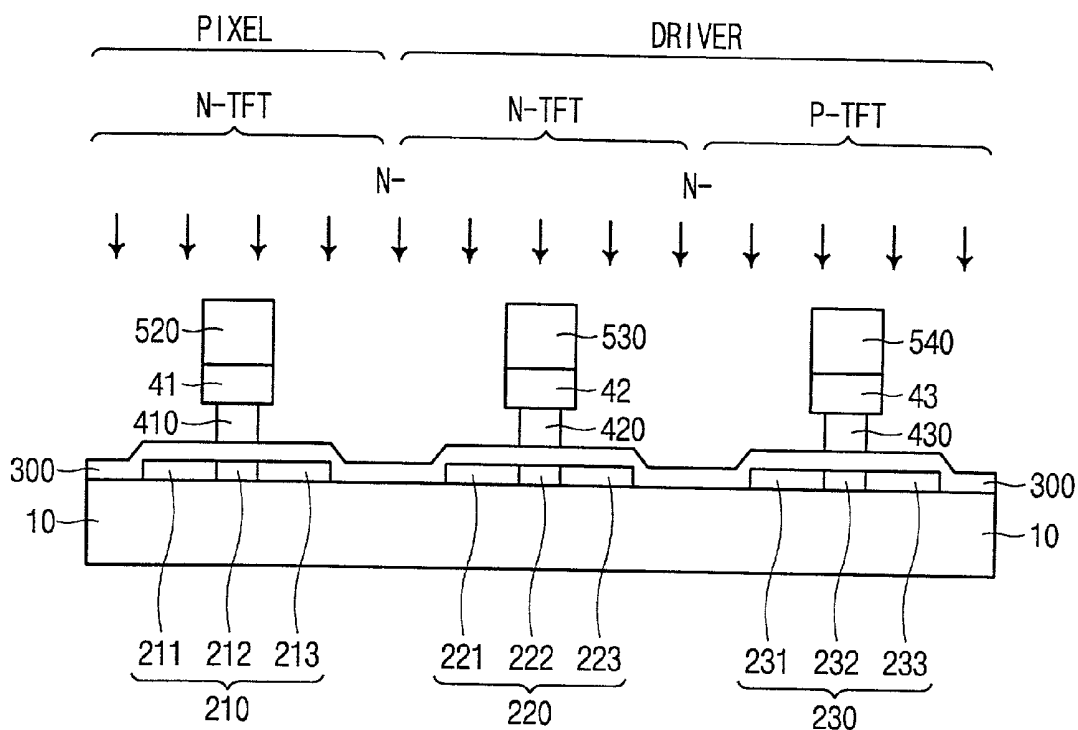


Fig. 6C

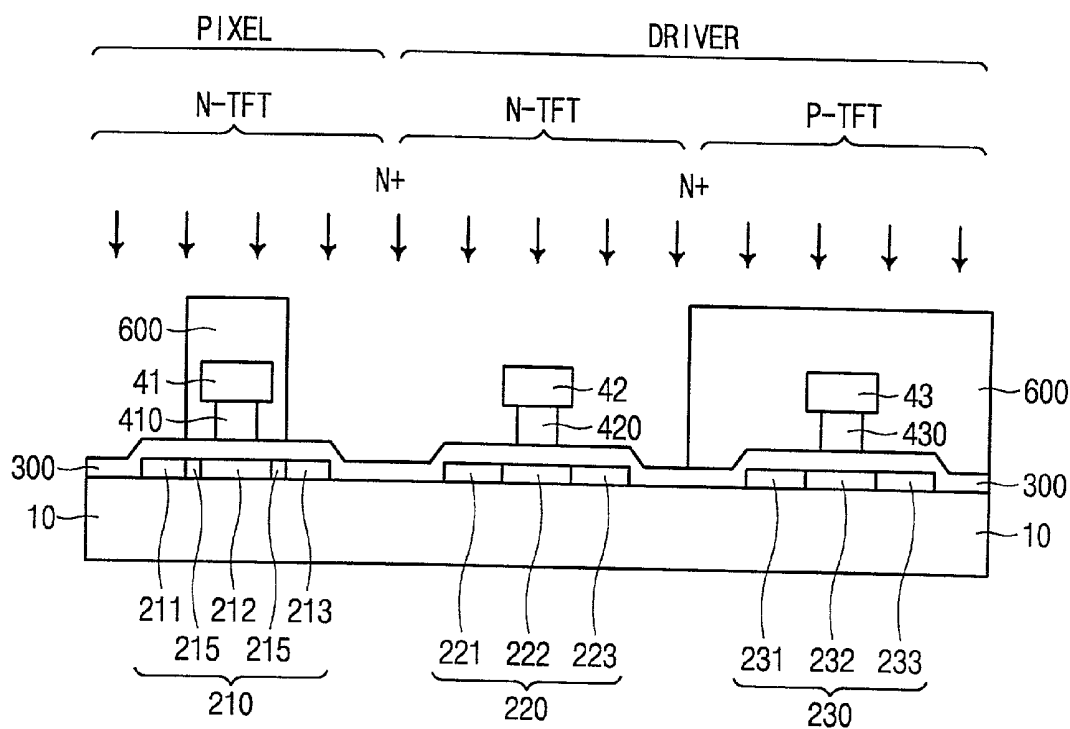


Fig. 6D

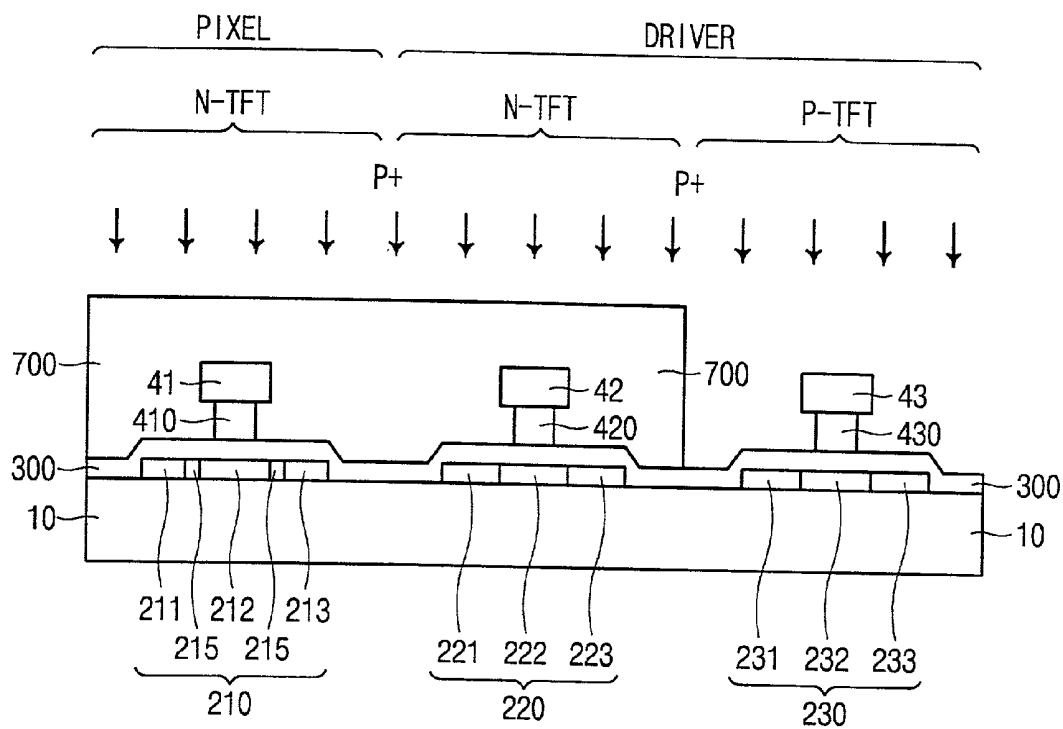


Fig. 6E

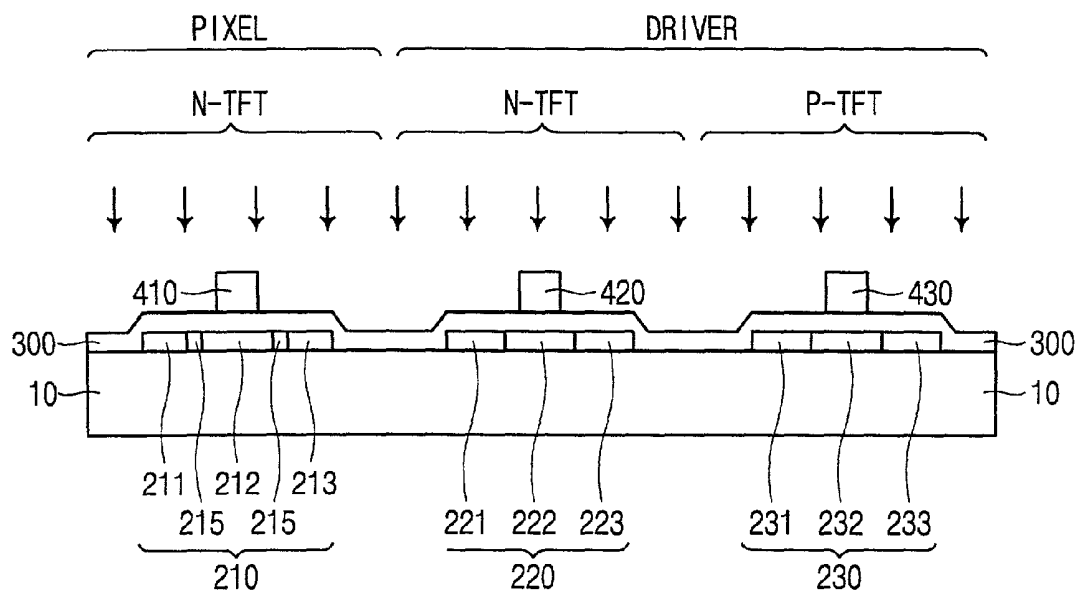


Fig. 7A

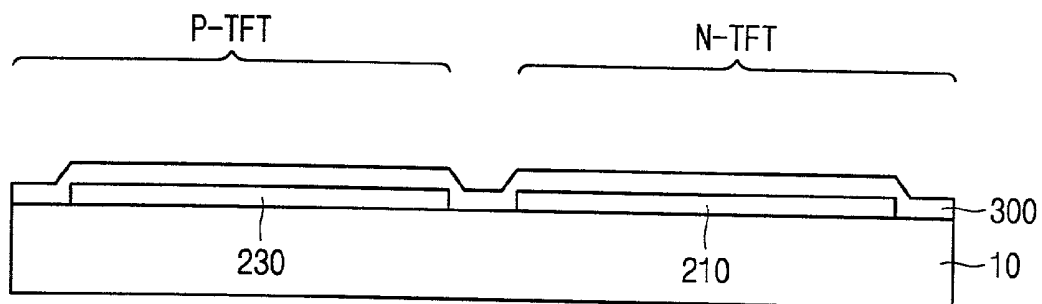


Fig. 7B

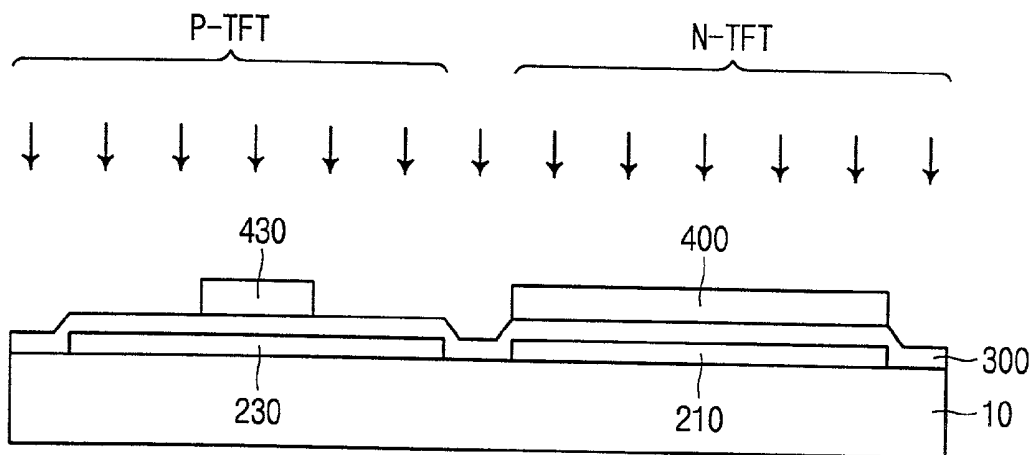


Fig. 7C

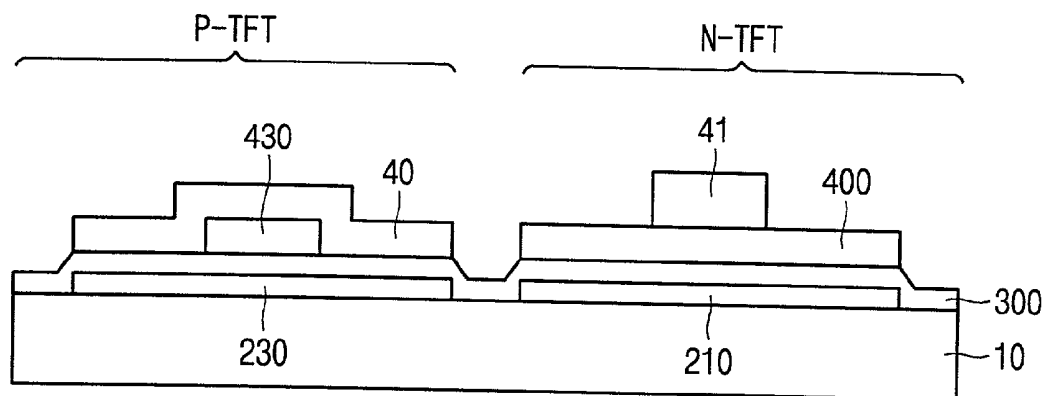


Fig. 7D

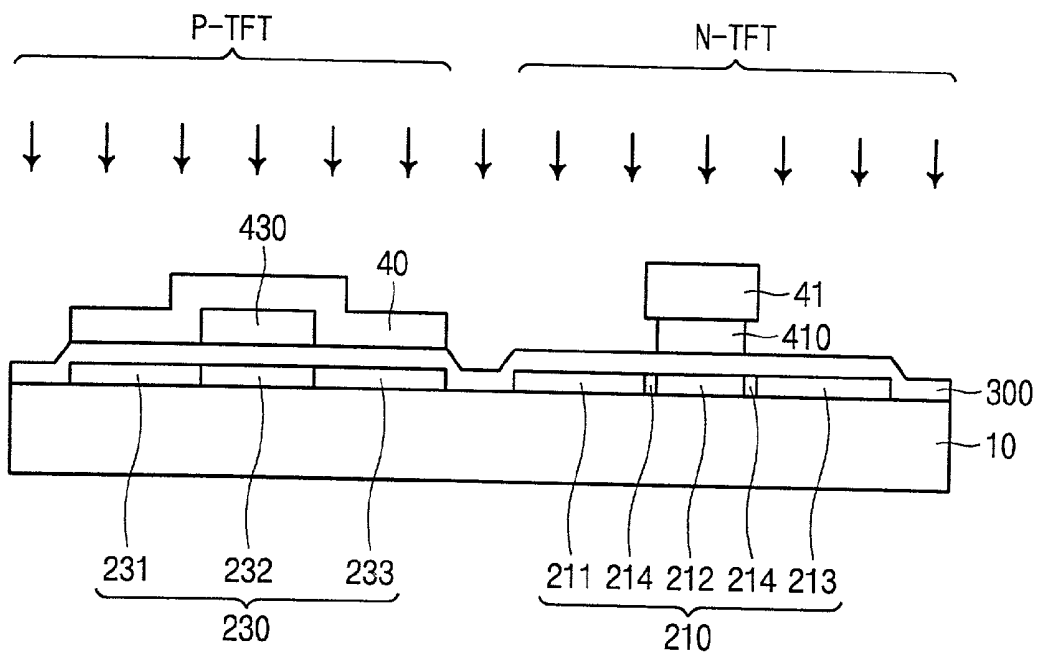
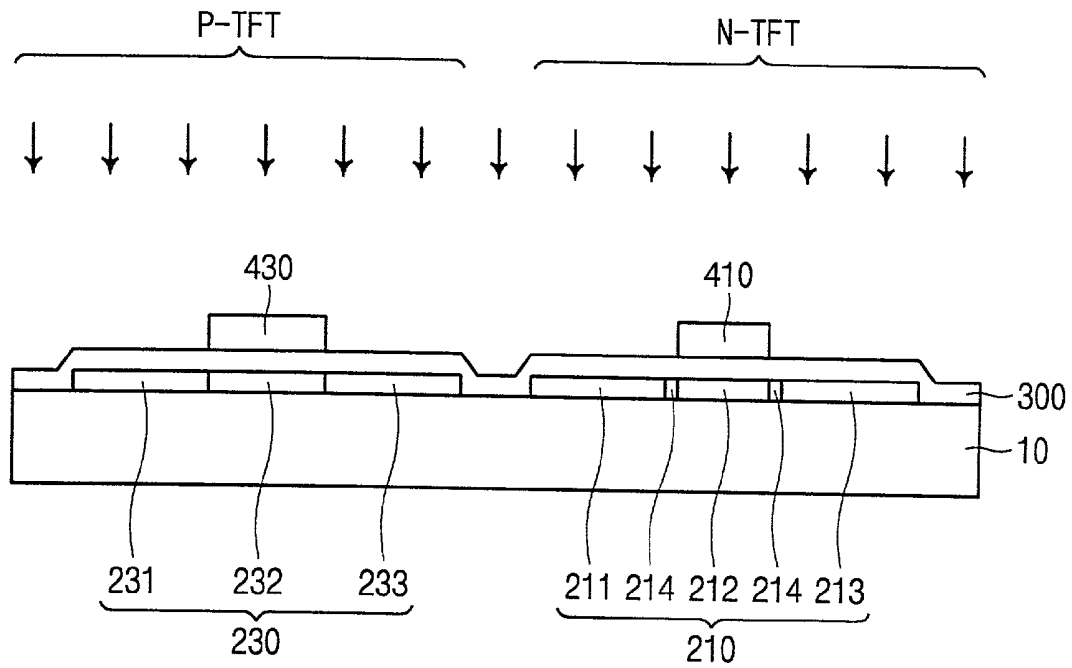


Fig. 7E



METHOD FOR FORMING A TFT IN A LIQUID CRYSTAL DISPLAY

BACKGROUND OF THE INVENTION

[0001] 1. Field of Invention

[0002] This invention is generally related to a process for fabricating a Thin Film Transistor (TFT) in a Liquid Crystal Display (LCD). Especially, this invention is related to a TFT composed of polycrystalline silicon and having an off-set area or a lightly doped drain (LDD) structure.

[0003] 2. Description of Related Art

[0004] An LCD is comprised of two substrates with liquid crystals interjected therebetween. An LCD is controlled by applying voltages to electrodes formed on the inside surface of substrates. It displays images by controlling the transmission and interception of lights, taking advantage of the relationship between the alignment of the liquid crystal layer and a polarizer. The liquid crystal layer's alignment is controlled by the electric field applied through the TFT. An LCD employs a retardation film, a reflecting plate and color filters for its image display. A lot of efforts are devoted for a better LCD in improving a polarizer, an alignment layer, an electrode composition, a glass substrate and a rubbing technique.

[0005] A pixel circuit, a display unit of LCD, is controlled by a transistor made of a semiconductor thin film on a glass substrate. TFT LCDs can be categorized into two types by characteristics of the semiconductor thin film. One type is an amorphous Si type TFT and the other is a polycrystalline Si type TFT. Amorphous Si type TFT has advantages that it can be formed at a low temperature, while having disadvantages that it has a lower carrier mobility. Usually, an amorphous Si type TFT is used for a switch transistor of a pixel circuit. This means that a driver circuit, which needs a higher carrier mobility, should be fabricated in a separate polycrystalline silicon process, resulting in a cost increase.

[0006] Polycrystalline Si has a high carrier mobility necessary for a driver circuit, so it can be used for both a driver circuit and a pixel circuit if a high temperature in fabricating a polycrystalline Si layer is not a problem. A polycrystalline Si structure would decrease the power consumption and the manufacturing costs. However, polycrystalline Si layer requires an additional step of the laser annealing of an amorphous Si layer and may not maintain a sufficient electric field in the pixel region because the high carrier mobility renders an excessive off current flow when the TFT is turned off.

[0007] FIG. 1 shows a vertical section of a conventional thin film transistor. An insulation layer (100) as a buffer layer lies on the substrate (10). An active area (200) formed of a semiconductor film lies on the insulation layer and a gate insulation layer (300) lies on the active area. Gate (410) lies on the gate insulation layer over the center of the active area. Source area and drain area (211, 213) are formed in an active area using the gate as implantation mask.

[0008] Current flows from source to drain when the transistor is turned on, and the display signal is applied to a pixel circuit connected to the drain. However, in a polycrystalline Si TFT, once the transistor is turned off, display signals can not be maintained in the pixel because a lot of off-currents

are flowing when the transistor is turned off due to the high carrier mobility of polycrystalline Si. Usually an LDD (Lightly Doped Drain) or an off-set area that is not doped are used as a barrier structure between channel and source (or drain) to suppress the off-current.

[0009] The challenges in manufacturing a polycrystalline Si type LCD having a driver circuit and a pixel circuit on the same glass substrate are how to form a barrier structure in an N-channel TFT; how to mask the P,N ion implantation; and how to minimize the process steps.

[0010] In order to form a barrier structure, a conventionally used ion implantation mask is a photo resist pattern, a spacer around the gate, or an oxidized gate metal edge. However, a photoresist pattern as an ion implantation mask renders aligning difficulties, and is not cost effective. Also a photo resist pattern may not stand out the heat generated during the high energy ion implantation. A spacer requires an extra deposition and an etch-back of CVD (Chemical Vapor Deposition) layer. Using an oxidized gate metal edge requires an additional mask in order to prevent other areas from oxidation. Also, the device may be partially damaged during the anisotropic dry etching and extra oxidation process.

SUMMARY OF THE INVENTION

[0011] An object of the present invention is to provide an improved process for forming an LDD or an off-set area in a polycrystalline Si type TFT. Another object of the present invention is to provide an improved process with minimum steps for forming an LDD or an off-set area in the polycrystalline Si type TFT.

[0012] The foregoing objects and other advantages of the invention are achieved, in the first aspect, by an LDD or an off-set structure that prevents the off-current while reducing the number of photolithography steps. In accordance with that aspect, a Si layer is laid on a glass substrate. An active area is formed by patterning the Si layer and a gate insulation layer is formed over the active area. Upper gate film and lower gate film are laid on the gate insulation layer and patterned to form a gate pattern of which lower gate pattern is narrower than the upper gate pattern. Source and drain regions, are ion-implanted using upper gate pattern as an implantation mask and then upper gate pattern is removed.

[0013] The off-set area is an active area that is not implanted during the ion-implantation and is defined by the size of skew that is a width difference between the upper gate pattern and the lower gate pattern. The size of the off-set area is usually limited because of the increased resistivity. An LDD is formed by a low dose implantation after removing upper gate layer. The LDD functions as a barrier structure against the off-current and also prevents the off-set area's high resistivity problem. The gate pattern can be undercut at the lower gate pattern by using a wet etchant having a high selectivity against the lower gate material. The etching step can be divided into two steps for each gate material to obtain a more accurate skew control. The etchant speed must be controlled in order to form a adequately skewed undercut in the lower gate pattern.

[0014] The foregoing objects and other advantages of the invention are further achieved in the second aspect of the present invention that prevents the off-current and provides

a well activated doped area. In accordance with the second aspect, a polycrystalline Si active area is formed and patterned on a glass substrate. The following steps of forming an insulation layer on the active area, forming a lower gate layer and an upper gate layer on the insulation area, forming an upper gate pattern and an undercut lower gate pattern at the center of active area, are similar to the first aspect of the present invention. But, in the ion implantation, the low density ions are implanted first using the upper gate pattern as implant mask. Then, we form a photoresist pattern that is wider than the upper gate pattern and implant high density ions using the photoresist pattern over source and drain as implantation mask. After removing the photoresist pattern and the upper gate pattern, the ion implanted area is activated by laser annealing.

[0015] The foregoing objects and other advantages of the invention are also achieved in the third aspect by forming a polycrystalline Si type N-channel and P-channel TFT on the same glass substrate. In accordance with the third aspect, a Si layer is laid on a glass substrate. An active area is formed by patterning the Si layer. A gate insulation layer is laid on the active area and a lower gate layer is formed on the gate insulation layer. The lower gate layer is patterned leaving N-channel TFT area and P-channel gate area, then P-type impurity is implanted using the lower gate pattern as implantation mask. Upper gate layer is deposited and etched using a photo mask, leaving P-channel TFT area and N-channel gate area, and then the lower gate layer is etched using the upper gate layer as etch mask in N-channel TFT area, after which N-type impurity is implanted. The upper gate pattern is removed after ion implantation.

[0016] An LDD is formed in this embodiment if a low energy N-type implantation step is added and the etchant for the gate layer has a high selectivity against the lower gate material. In accordance with the third aspect, the off-set structure of N-channel transistor is formed by a self aligning method. This may decrease the photolithography steps and align the pattern easily. Furthermore, an extra implantation mask is not necessary.

[0017] Protecting P-channel and N-channel transistor while implanting N-type or P-type impurities without an additional step and without damaging a photoresist layer is an important issue. The third aspect of the present invention provides a protection mechanism against ion implantation without an additional step and without damaging photoresist layers.

BRIEF DESCRIPTION OF THE DRAWINGS

[0018] FIG. 1 shows a vertical section of a conventional thin film transistor.

[0019] FIGS. 2a through 2h illustrate process sequences of a first embodiment of the present invention.

[0020] FIGS. 3a through 3j illustrate process sequences of a second embodiment of the present invention.

[0021] FIG. 4 illustrates the laser scattering around the gate pattern, resulting in a non activation area.

[0022] FIGS. 5a and 5b illustrate an additional process to solve the scattering problem.

[0023] FIGS. 6a through 6e illustrate process sequences of a third embodiment of second aspect of the present invention.

[0024] FIGS. 7a through 7e illustrate process sequences of a fourth embodiment of the present invention.

DETAILED DESCRIPTION

[0025] Referring to FIGS. 2a through 2h, more details are explained on the first embodiment, a polycrystalline Si type TFT having an off-set area. First, an isolation buffer layer (100) of SiO₂ is formed about 3,000 Å thick on a transparent glass substrate (10). (FIG. 2a) Then an amorphous Si layer of 500~800 Å (200) is laid on the isolation buffer layer. (FIG. 2b) The amorphous Si (200) is poly-crystallized by laser annealing and patterned to form an active area (210). (FIG. 2c) A SiO₂ isolation film of 1,000 Å thickness is deposited to form a gate insulation layer (300). (FIG. 2d) On the gate insulation layer, lower gate layer (400) and upper gate layer (40) respectively of 2,000~3000 Å thickness are deposited. Gate layers can be formed of high selectivity materials like Al/Cr, Cr/Al and Cr/ITO or low selectivity materials, such as Al/Mo, Mo/Al and Mo/ITO that have a low selectivity against Al etchant and ITO etchant. (FIG. 2e)

[0026] After laying photoresist film on the gate layer, a photoresist pattern (520) is patterned for wet etching the upper gate layer (40) and the lower gate layer (400) to form a gate electrode (410, 41) having an upper gate pattern and an undercut lower gate pattern. When the upper gate layer and the lower gate layer are composed of metals with a high etching selectivity, upper gate pattern (41) is formed first by etchant having a high etching ratio against the upper gate layer using the photoresist pattern as etch mask, and the lower gate pattern (410) is formed by another etchant having a high etching ratio against the lower gate layer and a low etching ratio against the upper gate layer using the upper gate pattern as etch mask. Commercially available etchants usually composed of phosphoric acid, nitric acid and acetic acid can be used for Al layers. For Cr layers, can be used also commercially available etchants composed of nitric acid and ceric ammonium nitride (C.A.N).

[0027] When using a material having a very low selectivity ratio against Al etchant, which is a solution of phosphoric acid, nitric acid and acetic acid for both gate layers, both of the gate layers can be etched by using an etchant that can etch both gate materials in a spray and a dipping method. After the upper gate etching is almost finished, the lower gate layer starts to be etched and the isotropic etching forms an undercut. As an example, suppose that the upper gate layer is Mo and the lower gate layer is Al. When the upper gate layer Mo is almost etched out and the lower gate layer Al is exposed to the etchant, the lower gate layer Al is more rapidly etched out than Mo, forming an undercut, because Al is electrolyzed by the electromotive force. The size of the undercut can be controlled by the over-etching time, the composition of etchant and the etching type. (FIG. 2f) The process continues with an ion implantation after the photo resist pattern (520) is removed. The active area outside of the upper gate pattern (41) is ion-implanted, using the upper gate pattern as implantation mask. Off-set area (214) is an active area that is not implanted but outside of the lower gate pattern (410). (FIG. 2g) If needed, an LDD (215) can be formed in the off-set area by low-energy implantation using the lower gate pattern (410) as implantation mask. (FIG. 2h) Now it is described how to form an N-channel transistor in the pixel circuit, and an N-channel transistor as well as a P-channel transistor in the driving circuit at the same time on the glass substrate.

[0028] FIGS. 3a-3j show the cross-section of TFT areas according to the TFT formation sequence. First buffer layer (100) is formed by deposition of SiO₂ on a glass substrate (10). Then, polycrystalline Si active areas (210, 220, 230) that will be an N-channel TFT of the pixel circuit, an N-channel TFT and a P-channel TFT of the driver circuit are formed. This active area is formed on a buffer layer (100) by depositing low temperature CVD amorphous silicon, then poly-crystallizing it by laser annealing and patterning it by a photolithography step. The process continues with a formation of a gate insulation layer (300) made of SiO₂ (FIG. 3a) and the lower gate layer (400) and the upper gate layer (40) are deposited. (FIG. 3b) The lower gate layer (400) must be formed of a material that has a higher etching ratio against the etchant than the upper gate layer (40). N-channel upper gate patterns (41, 42) are etched using photoresist masks (520, 530) over the gate area of the N-channel TFT as etch mask. (FIG. 3c) Photoresist mask (500) prevents the P-channel TFT area from being etched.

[0029] Lower gate patterns (410, 420), which have undercuts and are narrower than upper gate (41, 42), are formed below upper gate patterns because the lower gate material has a higher selectivity against the etchant. The lower gate pattern becomes a transistor gate and the upper gate pattern works as implantation mask during the source-drain implantation step. Size of the LDD or the off-set area corresponds to the skew between the upper gate pattern and the lower gate pattern. The skew is in the range of 0.2~0.8 μm for the off-set area and is in the range of 0.5~1.5 μm for the LDD. A lot of factors, such as voltages to be applied, dimension of other elements and transistor characteristics determine the actual size.

[0030] Photoresist layer (500) and photoresist patterns (520, 530) over the upper gate layer are removed after N-channel TFT gates are formed. Then, N-type impurity ions are implanted all over the glass substrate. Since upper gate patterns (41, 42) and P-channel upper gate layer (40) act as mask layer, an extra mask for P channel TFT is not needed. Source and drain (211;221, 213;223) and channels (212, 222) are formed in the N-channel TFT active area after ion implantation. (FIG. 3d)

[0031] The process continues with a removal of upper gate layer (40) and upper gate pattern (41, 42), and then low energy N-type impurities are implanted. LDDs (215, 225) are formed in the skew area between upper gate pattern and lower gate pattern because lower gate patterns (410,420) act as mask layer for LDD implantation. LDD can improve the off-current and the high resistivity problem of the off-set area. If the LDD ion implantation step is skipped, then an off-set area is formed instead. P-type TFT area is protected by lower gate layer (400) during the LDD ion implantation.

[0032] A photoresist layer is formed over N-channel transistor (600) and gate area of P-channel transistor (610) for P-channel TFT formation. (FIG. 3f) P-channel gate pattern (430) is etched using photoresist layers (600, 610) as etch mask and then an undercut is formed below photo resist pattern. (610) Since a P-channel transistor requires neither an LDD nor an off-set area, the photoresist pattern (610) may be reduced to (620) by ashing or baking, and P-type impurities may be implanted using the lower gate patterns (430) as implantation mask. Source, drain (231, 233) and channel (232) of P-channel transistor are formed by P-type

ion implantation using the lower gate pattern (430) as mask and N-channel transistor area is covered with a photoresist layer (600) during this implantation step. After the photoresist layer over N-channel transistor and the gate area of P channel transistor is removed, an isolation layer is deposited and a source electrode and a drain electrode are formed. Then, a passivation layer is laid and pixel electrodes are formed.

[0033] A simple source, gate and drain structure (212, 222, 232) can be formed by high energy implantation over N-channel transistor if barrier structure like an LDD and an off-set area are not needed. P-channel should be covered with a metal layer (700) or a photoresist layer during this N-type high energy implantation. (FIGS. 3h-3i)

[0034] Meanwhile ion-implanted active areas are annealed by laser before depositing an isolation layer. This laser anneal activation step lowers the resistivity of the polycrystalline Si. However, the active area near the gate pattern is not activated due to the laser scattering, resulting in a high resistivity area. High resistivity in an LDD may cause a transistor malfunction. FIG. 4 shows this scattering effect due to the gate pattern in the LDD area. During laser annealing of source, drain (211,213) and LDD (215) area, laser is scattered at the gate pattern edge (410). A certain area within the distance from the gate pattern, which is an LDD area near channel may not be activated, causing a transistor malfunction. This problem can be solved by an additional step, which comprises forming mask patterns (710, 720, 730) smaller than gate patterns (410, 420, 430), etching the gate patterns and laser annealing LDD area. (FIG. 5b) The LDD area can be activated by laser annealing because the LDD area is now away from the scattering region.

[0035] FIGS. 6a-6e show sequences of vertical section showing a third embodiment of the present invention. As illustrated in FIGS. 2a and 2b, photoresist patterns (520, 530, 540) are formed in the TFT active area (FIG. 6a) to form a gate pattern. Gate patterns are formed (41;42;43, 410;420;430) using photoresist patterns as etch mask. Lower gate patterns are narrower than upper gate patterns and have undercuts.

[0036] The process continues with a low energy implantation of N-type impurity. (FIG. 6b) Active areas (211, 213, 221, 223,231, 233) that are not masked by the upper gate pattern are implanted and active areas (212, 222, 232) under upper gate pattern are not implanted. After removing photoresist patterns, a new photo resist pattern (600) is formed over a P-type TFT of the driver circuit and over a gate (41, 410) of the N-type TFT in the pixel circuit. The gate photoresist pattern overlying the gate electrode (41, 410) in the pixel circuit should be wider than the channel area (212) in the active area (200) because it will be used in forming an LDD (215) area. Source and drain (211;221, 213;223) are formed by a high energy implantation of N-type impurity using the photoresist pattern (600) as implantation mask. (FIG. 6c) An LDD area is formed between channel (212) and source (or drain) (211, 213) in the N-type TFT of pixel circuit because a wider photoresist pattern protects the ion implantation over the LDD area (215). A New photoresist pattern (700) is formed after removing the old photoresist pattern (600). (FIG. 6d) The photoresist pattern is formed to expose the P-type TFT area in the driver circuit. Source and drain (231, 233) are formed in an active area (230) by

implanting P-type impurity and the upper gate patterns (41, 42, 43) is etched out after removing the photoresist pattern (700). The following laser annealing activates the implanted ions in the active area. Following processes of deposition of insulation layer, forming source and drain electrodes, passivation and pixel electrode completes the TFT structure on the lower substrate of the LCD.

[0037] FIGS. 7a~7e show a sequence of vertical section of a fourth embodiment of the present invention. First, active areas (210, 230) and a gate insulation layer are formed on a glass substrate (10). The active area is formed by crystallizing the amorphous Si layer through laser annealing, followed by a photolithography process. A buffer layer can be formed also on the glass substrate as an insulation layer. Lower gate patterns (400, 430) are formed on the N-channel TFT area and on the gate area in the P-channel TFT and then, P-type impurity is implanted using the lower gate pattern (400, 430) as implant mask. Upper gate pattern (40, 41) is formed over the P-channel TFT area and the gate area in the N-channel TFT by etching the upper gate layer. (FIG. 7c) As a result, the lower gate pattern (430) is wrapped by the upper gate layer (40) in the P-channel TFT area and the upper gate pattern (41) is formed over the lower gate pattern (400) that covers the whole N-channel TFT area.

[0038] The process continues with gate formation by etching the lower gate pattern using the upper gate pattern as etch mask and the N-type impurity is implanted. As a result, source (213), drain (211) channel (212) and gate (410) are formed. Off-set area (214) between the channel and the source, drain area is not implanted. The lower gate pattern covered by the upper gate pattern in the P-channel TFT is protected from etching and the active area in the P-channel TFT is also protected against the N-type impurity.

[0039] The lower gate pattern of the N-channel TFT forms an undercut by an isotropic etching using the upper gate pattern as etch mask. This is a self-alignment step, eliminating an extra photo step for the off-set area and a possible misalignment problem. After removing the upper gate pattern, low energy N-type impurities are implanted, making the offset area (214) in FIG. 7d an LDD area (215). (FIG. 7e).

[0040] According to the present invention, barrier structures like an off-set area and an LDD area can be easily formed in the polycrystalline Si type TFT by using a double gate layer process and isotropic undercut characteristics, enabling pixel circuits and driver circuits to be formed on the same substrate in minimum process steps. Especially according to the fourth embodiment, an extra implant mask is not needed, so we can decrease the process steps and can eliminate additional problems that may happen during the additional implantation step.

We claim:

1. A method for forming a TFT in an LCD, comprising the steps of:

- forming a Si layer on a glass substrate;
- forming an active area by patterning the Si layer;
- forming a gate insulation layer overlying the active area;
- forming a lower gate layer and an upper gate layer overlying the gate insulation layer;

forming a photoresist pattern on the gate area of the TFT;

forming an upper gate pattern and a lower gate pattern that has an undercut in the lower gate pattern using the photoresist pattern as etch mask;

implanting impurities using the upper gate pattern as implant mask; and

removing the upper gate pattern.

2. A method of claim 1, further comprising:

forming an LDD area by implanting low energy N-type impurities after said step of removing the upper gate pattern.

3. A method of claim 1, wherein said step of forming an upper gate pattern and a lower gate pattern that has an undercut in the lower gate pattern using the photoresist pattern as etch mask, further comprises:

etching continuously the upper gate layer and the lower gate layer by an etchant that is highly selective against the lower gate material.

4. A method of claim 2, wherein said step of forming an upper gate pattern and a lower gate pattern that has an undercut in the lower gate pattern using the photoresist pattern as etch mask, further comprises:

etching continuously the upper gate layer and the lower gate layer by an etchant that is highly selective against the lower gate material.

5. A method for forming an N-channel TFT and a P-channel TFT on the same substrate of an LCD, comprising the steps of:

forming a Si layer on a glass substrate;

forming an active area by patterning the Si layer;

forming a gate insulation layer overlying the active area;

forming a lower gate layer and an upper gate layer overlying the gate insulation layer;

forming a first photoresist pattern overlying a gate area of the N-channel TFT and the whole P-channel TFT area;

forming an upper gate pattern and a lower gate pattern that has an undercut in the lower gate pattern for the N-channel TFT using the first photoresist pattern as etch mask;

implanting N-type impurities using the upper gate pattern as implant mask;

removing the upper gate pattern;

forming a second photoresist pattern overlying the entire N-channel TFT area and the gate area of the P-channel TFT;

forming a gate pattern for the P-channel TFT using the second photoresist pattern as etch mask;

implanting P-type impurities using the second photoresist pattern as implant mask.

6. A method of claim 5, further comprising:

forming an LDD area by implanting low energy N-type impurities after said step of removing the upper gate pattern.

7. A method of claim 5, further comprising:

partially removing the photoresist pattern to be narrower than the lower gate pattern before said step of implanting P-type impurities.

8. A method of claim 5, further comprising:

forming a third photoresist pattern on the lower gate pattern, said third photoresist pattern being narrower than the lower gate pattern;

etching the lower gate pattern using the third photoresist pattern;

activating the impurity implanted area by laser annealing.

9. A method for forming a TFT in an LCD, comprising the steps of:

patterning a poly Si active area on a glass substrate;

forming an insulation layer on the active area;

forming a lower gate layer and an upper gate layer on the insulation layer;

forming an upper gate pattern and an undercut lower gate pattern at the center of the active area;

implanting low energy impurities using the upper gate pattern as implant mask;

forming a photoresist pattern, said photoresist pattern being wider than the upper gate pattern;

implanting high energy impurities using the photoresist pattern over source and drain as implant mask;

removing the photoresist pattern and the upper gate pattern; and

activating the implanted area by laser annealing.

10. A method for forming a P-channel TFT and an N-channel TFT on the same substrate of an LCD, comprising the steps of:

forming a Si layer;

forming an active area by patterning the Si layer;

forming a gate insulation layer over the active layer;

forming a lower gate layer overlying the gate insulation layer;

forming a lower gate pattern overlying the entire N-channel TFT area and the gate area of the P-channel TFT by a photolithography process;

implanting P-type impurities using the lower gate pattern as implant mask;

forming an upper gate pattern overlying the whole P-channel TFT area and the gate area of the N-channel TFT by a photolithography process;

etching the lower gate pattern in the N-channel TFT area using the upper gate pattern as etch mask;

implanting N-type impurities using the upper gate pattern as implant mask; and

removing the upper gate pattern.

11. A method of claim 10, further comprising:

implanting low energy N-type impurities after removing the upper gate pattern.

12. A method of claim 10, wherein the etchant for the gate layer has a high selectivity against the lower gate material.

13. A method of claim 10, further comprising:

activating the implanted area by laser annealing.

14. A method of claim 11, further comprising:

activating the implanted area by laser annealing.

* * * * *

专利名称(译)	在液晶显示器中形成TFT的方法		
公开(公告)号	US20010008781A1	公开(公告)日	2001-07-19
申请号	US09/793541	申请日	2001-02-27
[标]申请(专利权)人(译)	李宙HYUNG HONG MUN PYO YOUN陈JOO JUNG BYUNG HOO 黄昌圭WON		
申请(专利权)人(译)	李宙亨 HONG MUN杓 YOUN CHAN-JOO 荣炳HOO 黄长WON		
当前申请(专利权)人(译)	三星DISPLAY CO. , LTD.		
[标]发明人	LEE JOO HYUNG HONG MUN PYO YOUN CHAN JOO JUNG BYUNG HOO HWANG CHANG WON		
发明人	LEE, JOO-HYUNG HONG, MUN-PYO YOUN, CHAN-JOO JUNG, BYUNG-HOO HWANG, CHANG-WON		
IPC分类号	G02F1/1368 G02F1/136 H01L21/20 H01L21/336 H01L21/8238 H01L27/08 H01L27/092 H01L29/423 H01L29/49 H01L29/786 H01L21/00		
CPC分类号	H01L27/1214 H01L29/42384 H01L29/4908 H01L29/66757 H01L29/78621 H01L27/127		
优先权	1019980019760 1998-05-29 KR 1019980048365 1998-11-12 KR 1019980053796 1998-12-08 KR		
其他公开文献	US6403406		
外部链接	Espacenet USPTO		

摘要(译)

通过在具有P沟道TFT和N沟道TFT的多晶Si型TFT LCD中使用上栅极层和下栅极层之间的蚀刻速率差，可以形成具有底切下栅极层的双层栅极层。通过在N型离子注入期间使用上栅极层作为离子注入掩模，可以容易地形成LDD结构。 LDD尺寸由上栅极层和下栅极层之间的歪斜尺寸决定。此外，可以省略掩蔽离子注入所需的光刻步骤。

Fig. 1

(Prior Art)

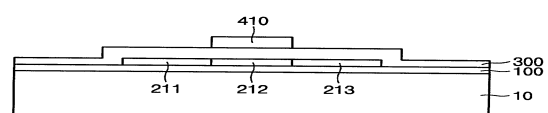


Fig. 2A

