



US 20020047556A1

(19) **United States**

(12) **Patent Application Publication**

(10) **Pub. No.: US 2002/0047556 A1**

Tajika et al.

(43) **Pub. Date:**

Apr. 25, 2002

(54) **BACKLIGHT FOR LIQUID CRYSTAL DISPLAY**

(22) Filed: **Feb. 28, 2001**

(75) Inventors: **Takahisa Tajika, Kato-gun (JP);
Masashi Takamatsu, Kato-gun (JP);
Noriaki Urakawa, Kato-gun (JP);
Takuji Sasahara, Kato-gun (JP);
Haruyasu Nishiyama, Kato-gun (JP)**

(30) **Foreign Application Priority Data**

Sep. 28, 2000 (JP) 2000-296223

Publication Classification

(51) **Int. Cl.⁷** **G05F 1/00**

(52) **U.S. Cl.** **315/169.3; 315/194**

(57) **ABSTRACT**

A backlight used for a liquid crystal display includes a plurality of light emitting units, and a phase controller for adjusting the phase of the light emitting units. The light emitting units are turned on and off based on pulse signals of a predetermined cycle having an on-period and an off-period. Under the control of the phase controller, the light emitting units are turned on or off with different phases.

Correspondence Address:

**Patrick G. Burns
GREER, BURNS & CRAIN, LTD.
Suite 2500
300 South Wacker Dr.
Chicago, IL 60606 (US)**

(73) Assignee: **FUJITSU LIMITED**

(21) Appl. No.: **09/795,422**

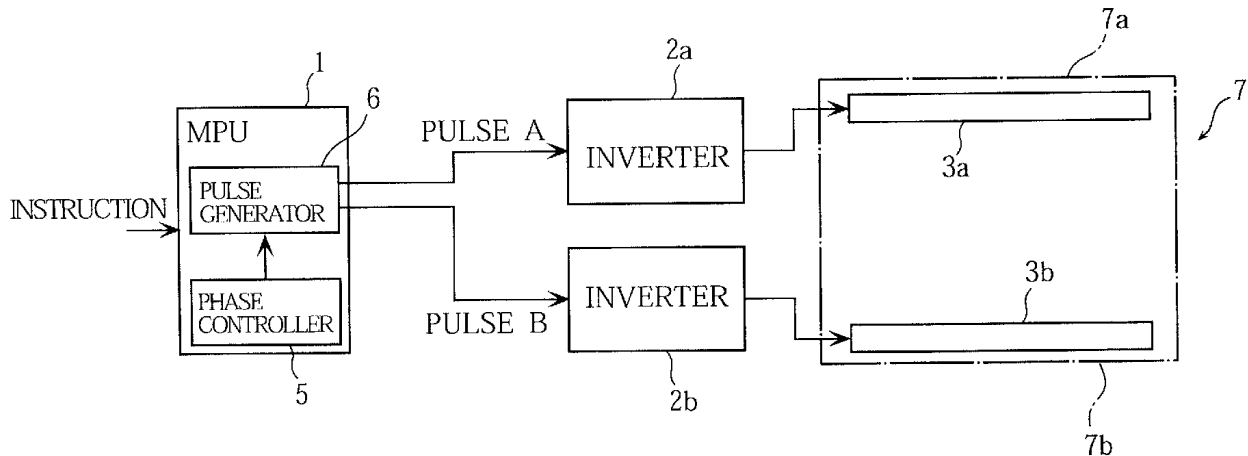


FIG.1

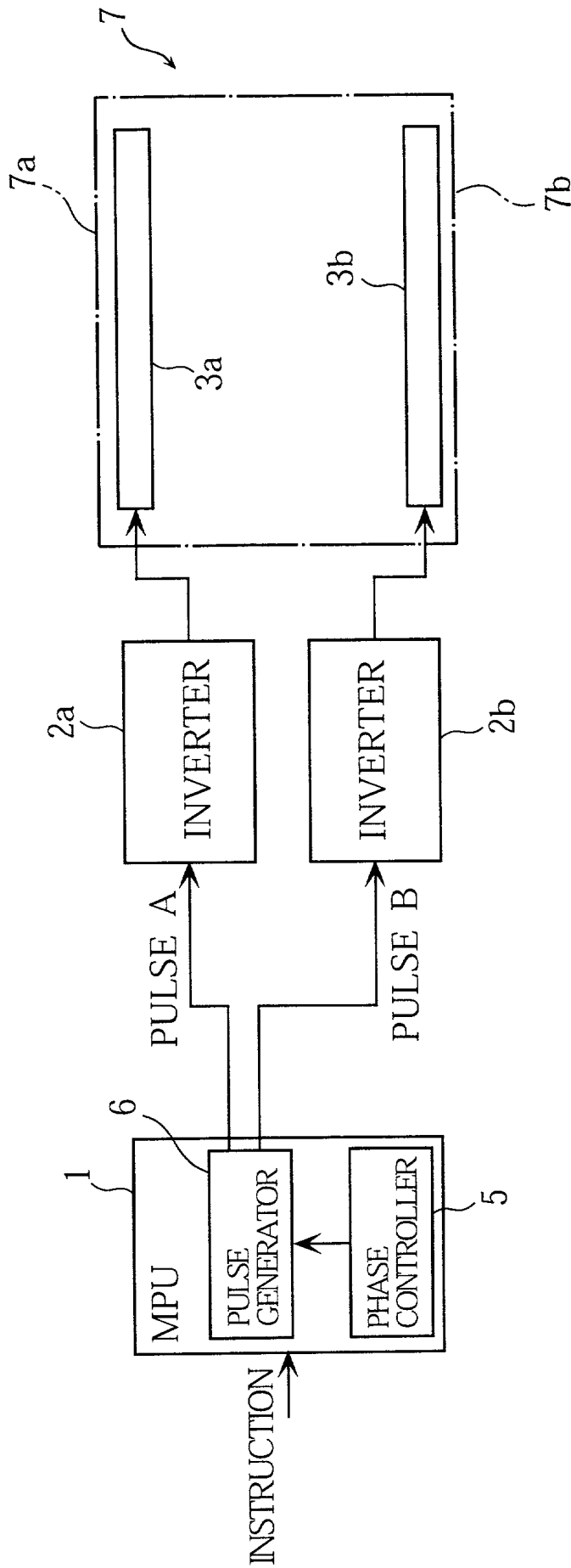


FIG. 2

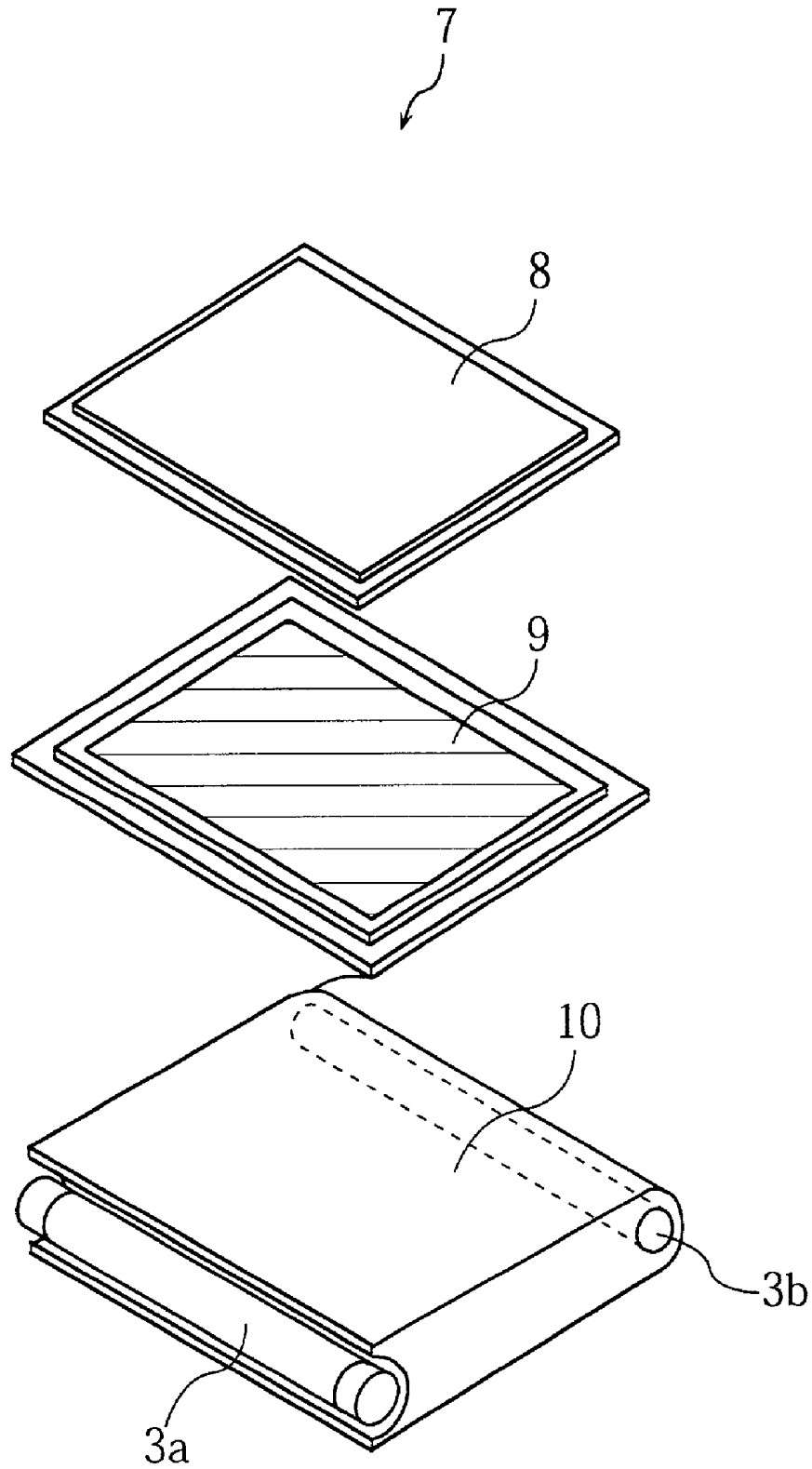


FIG. 3

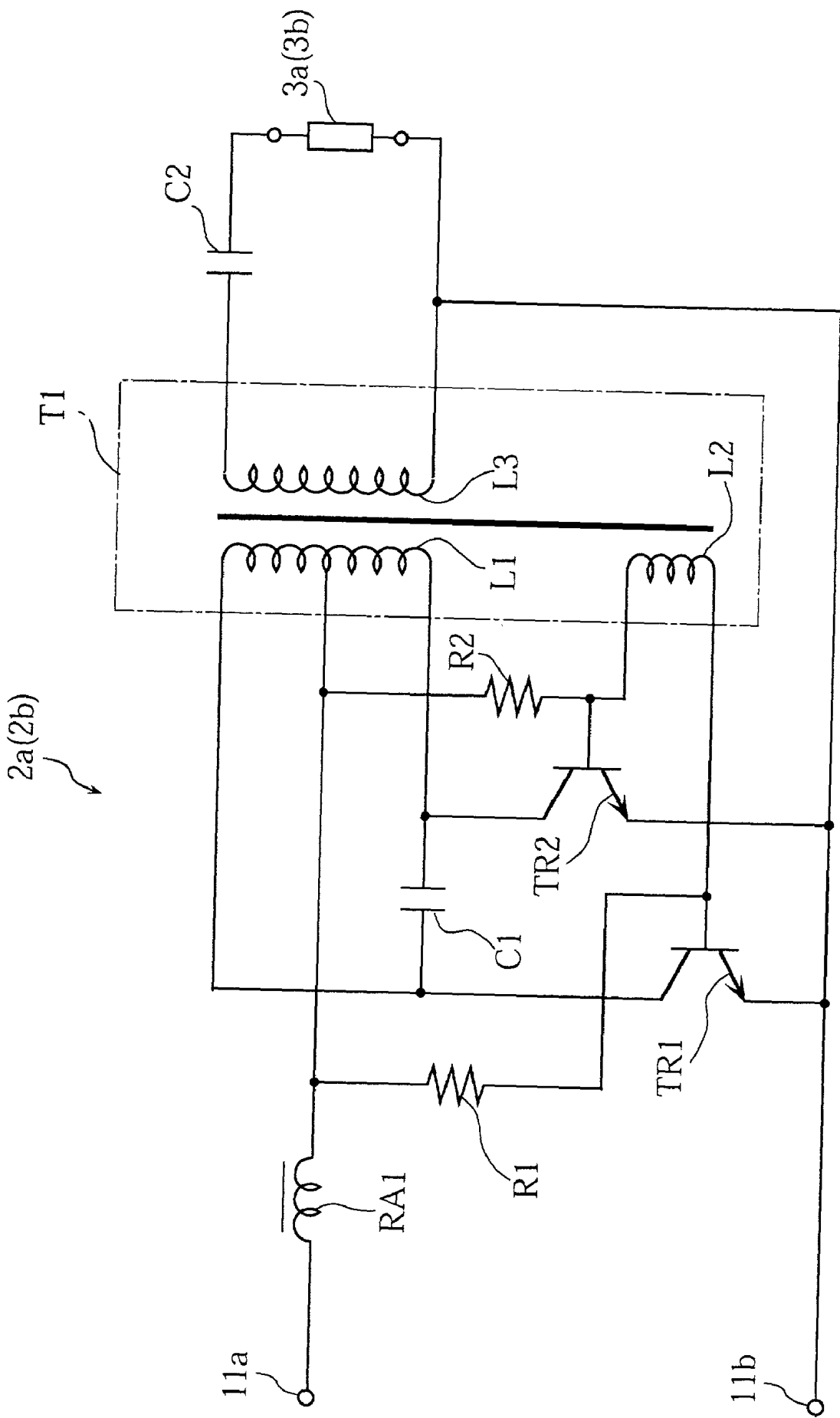


FIG.4A

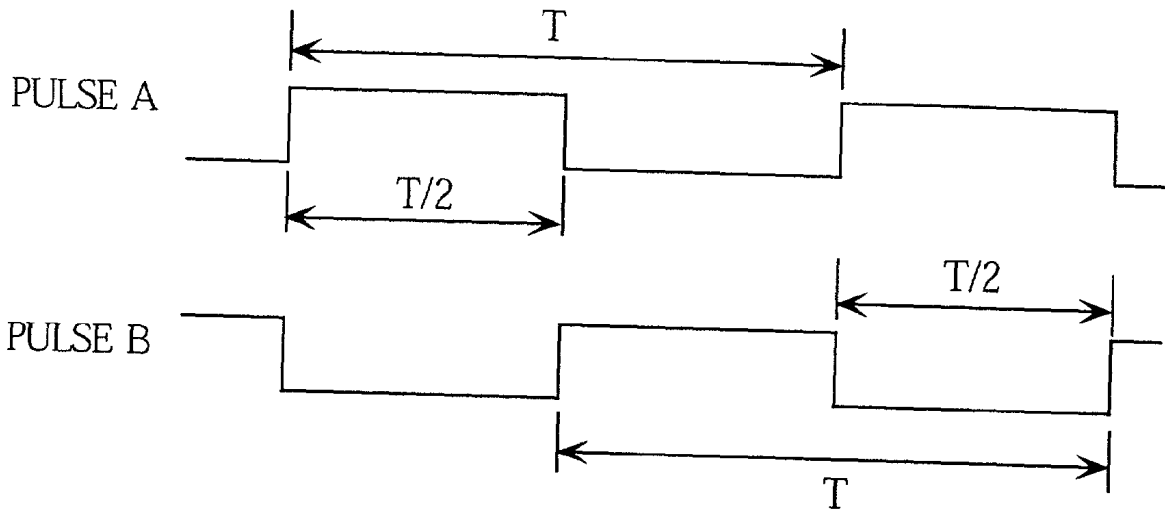


FIG.4B

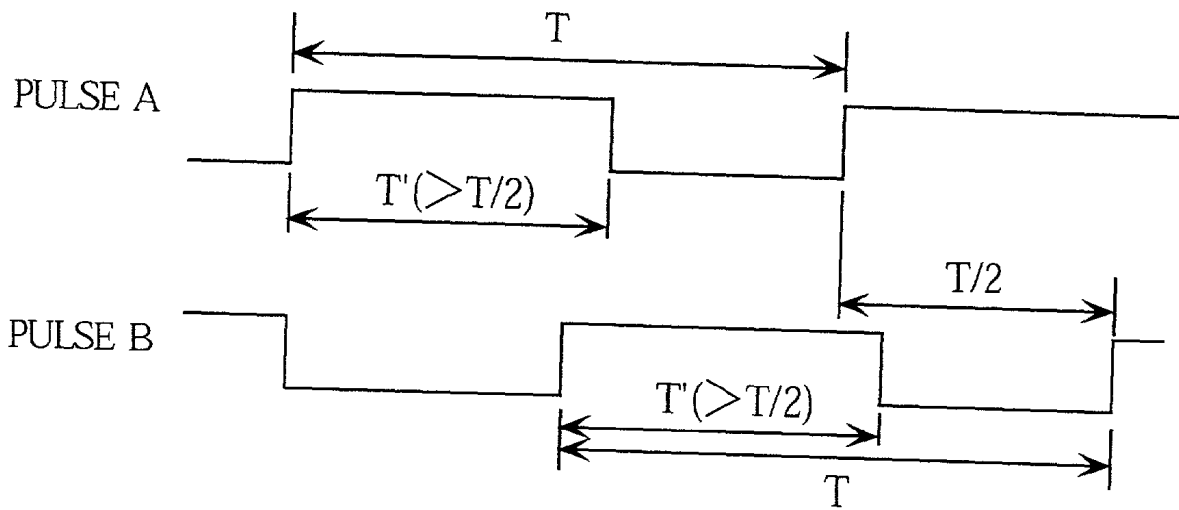


FIG.4C

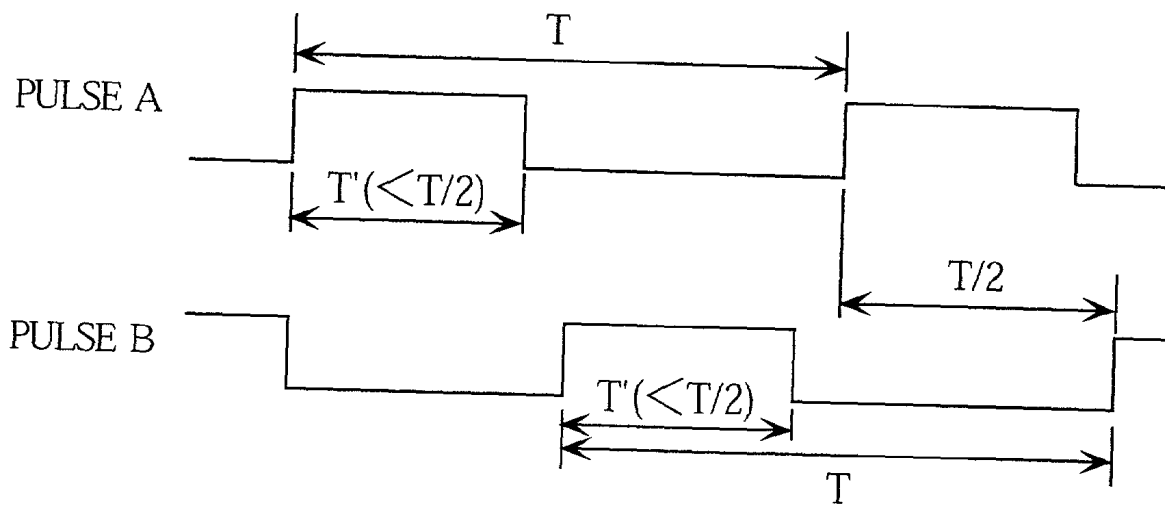


FIG.5A

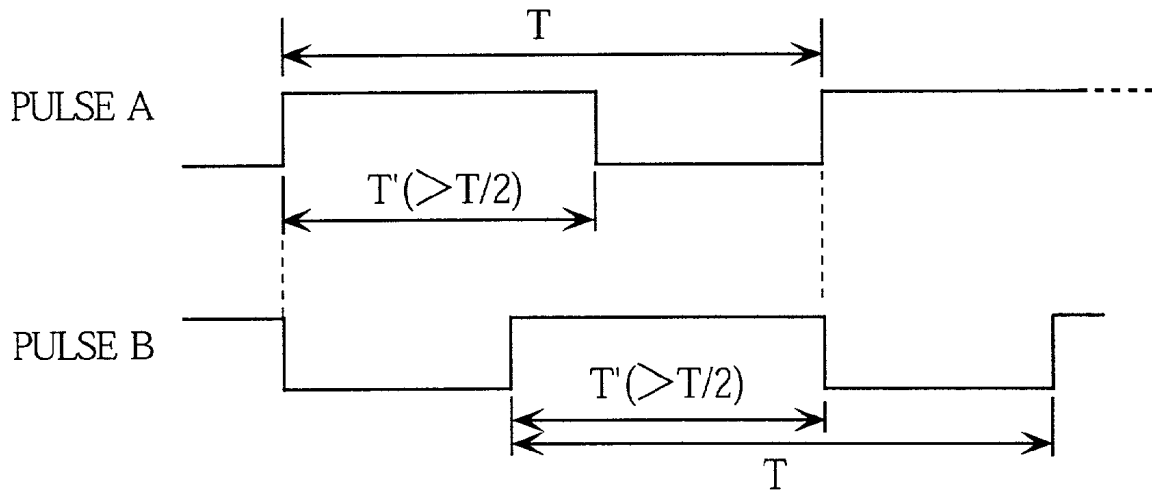
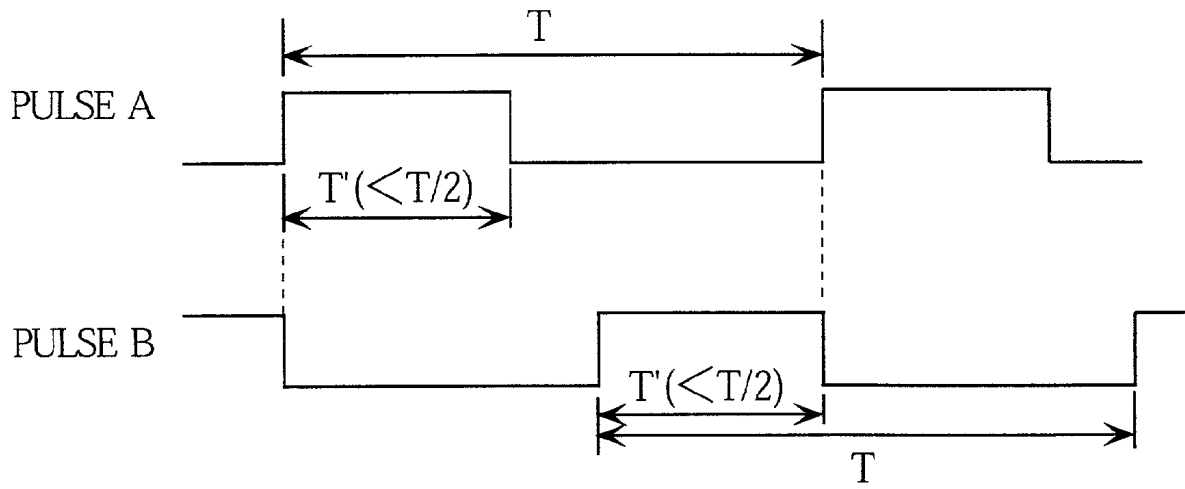


FIG.5B



BACKLIGHT FOR LIQUID CRYSTAL DISPLAY

BACKGROUND OF THE INVENTION

[0001] 1. Field of the Invention

[0002] The present invention relates to a backlight used for a liquid crystal display.

[0003] 2. Description of the Related Art

[0004] As is known, liquid crystal displays (LCDs) may be provided with a backlight for making the displayed information discernible. A backlight may include two fluorescent lamps, inverters, etc. One of the lamps may be arranged along the upper edge of the LCD panel, while the other lamp along the lower edge of the panel. Based on predetermined pulse signals, the inverters supply driving voltage to the lamps. To be precise, this voltage supply is performed only in response to the on-periods of the pulse signals. As a result, the two lamps are simultaneously turned on and off (the so-called "chopping control"). The adjustment of brightness of the LCD panel is performed by changing the ratio of the length of the on-period to the length of one cycle of the pulse signal (one cycle consists of one on-period and one off-period). When the ratio is 90% for example, the brightness of the monitor may be the maximum. As the ratio decreases, the monitor brightness also decreases accordingly. Then, when the ratio is 50% for example, the monitor brightness may be the minimum.

[0005] The conventional LCD has been found disadvantageous in the following respect.

[0006] In the chopping control, as stated above, the two lamps are turned on and off simultaneously (i.e. in the same phase). In this manner, unfavorably, the monitor of LCD may start flickering when the above-mentioned ratio becomes smaller than 50%. This means that the dynamic range of the monitor brightness cannot be sufficiently wide.

SUMMARY OF THE INVENTION

[0007] The present invention has been proposed under the circumstances described above, and its main object is to provide an LCD backlight capable of providing an LCD with a wider dynamic range of the monitor brightness without compromising the information-presenting quality.

[0008] According to the present invention, there is provided a backlight for a liquid crystal display, which includes: N light emitting units to be turned on and off based on pulse signals of a predetermined cycle including an on-period and an off-period, where N is an integer equal to or greater than 2; and a phase controller for controlling a phase of each of the pulse signals. The on-periods of the respective pulse signals are phase shifted to each other.

[0009] Preferably, the on-periods of the respective pulse signals may be phase shifted by $360^\circ / N$.

[0010] The backlight of the present invention may further include a rectangular light guide provided with a pair of parallel edges along which the light emitting units are arranged.

[0011] Preferably, each of the light emitting units may be provided with a cold cathode tube.

[0012] Preferably, the light emitting units may be operated in at least three modes including a high brightness mode, a standard brightness mode and a low brightness mode. In the lower brightness mode, the on-periods of the respective pulse signals do not overlap each other.

[0013] Other features and advantages of the present invention will become apparent from the detailed description given below with reference to the accompanying drawings.

BRIEF DESCRIPTION OF THE DRAWINGS

[0014] FIG. 1 is a block diagram showing the principal components of a backlight embodying the present invention;

[0015] FIG. 2 is an exploded view showing an LCD panel;

[0016] FIG. 3 is a circuit diagram of the inverter shown in Fig. 1;

[0017] FIGS. 4A-4B show examples of pulse signals for controlling the operation of the backlight; and

[0018] FIGS. 5A-5B show different examples of pulse signals for controlling the operation of the backlight.

DETAILED DESCRIPTION OF THE PREFERRED EMBODIMENTS

[0019] The preferred embodiments of the present invention will be described below with reference to the accompanying drawings.

[0020] FIG. 1 schematically shows the principal components of a backlight embodying the present invention. The illustrated backlight, used as a light source of a liquid crystal display (LCD), includes a main controller 1, first and second inverters 2a-2b, and first and second fluorescent lamps 3a-3b.

[0021] The main controller 1 includes MPU (microprocessor unit) for controlling the LCD as a whole. In particular, the MPU serves as phase controller 5 and pulse generator 6. The phase controller 5 controls the on-off timing of the first and the second lamps 3a, 3b. The pulse generator 6 supplies a pulse signal A to the first inverter 2a, and a pulse signal B to the second inverter 2b. These pulse signals are subjected to pulse width modulation (PWN) before being sent to the inverters 2a, 2b.

[0022] Based on the pulse signal A, the first inverter 2a supplies an alternating voltage to the first lamp 3a, thereby turning the lamp 2a on and off periodically. Similarly, the second inverter 2b supplies an alternating voltage to the second lamp 3b in accordance with the pulse signal B, to turn the lamp 3b on and off periodically.

[0023] The two lamps 3a, 3b are provided at the back of an LCD panel 7. The illustrated panel 7 is rectangular and has relatively long upper and lower edges 7a, 7b. The first lamp 3a is disposed close to the upper edge 7a, while the second lamp 3b is disposed close to the lower edge 7b.

[0024] Referring to FIG. 2, the LCD panel 7 includes a protection plate 8, a liquid crystal unit 9, and a light guide 10. The protection plate 8, made of a transparent glass or resin material, protects the LC unit 9 from damage. The LC unit 9 is a conventional one which consists of liquid crystal, color filters, glass substrates (upon which transparent electrodes and transistors are provided), polarizers, etc. The light

guide **10** distributes the light emitted from the lamps **3a**, **3b** over the entire surface of the LC unit **9**. Each of the first and the second lamps **3a**, **3b** extends along one of the two longer edges of the light guide **10**.

[0025] Referring to **FIG. 3**, the first inverter **2a** includes two input terminals **11a-11b**, two transistors **TR1-TR2**, a high-voltage transformer **T1**, a direct-current reactor **RA1**, two capacitors **C1-C2**, and two resistors **R1-R2**. The transformer **T1** is provided with three windings **L1-L3**. The second inverter **2b** is identical with the first inverter **2a**.

[0026] The function of the backlight will now be described. First, as shown in **FIG. 1**, an instruction signal is supplied to the main controller **1** for adjusting the brightness of the monitor. This instruction signal may be issued as a result of the user's operation of brightness adjustment. Alternatively, the instruction signal may be issued automatically in response to a detection signal from an optical sensor provided for checking the brightness of the neighborhood of the LCD.

[0027] Based on the supplied instruction signal, the main controller **1** adjusts the duty factor of the pulse signals **A** and **B**. Here, the duty factor is the ratio of the on-duty period to the off-duty period in one cycle of the pulse signal. Specifically, referring to **FIGS. 4A-4C**, the pulse signals **A** and **B** have a predetermined cycle **T** and are phase shifted relative to each other by 180° . The cycle **T** may be $1/200$ seconds. In the standard brightness mode shown in **FIG. 4A**, the duty factor of each of the pulse signals **A** and **B** is 50%. Upon receiving an instruction signal to increase the brightness of the monitor, the main controller **1** makes the duty factor of each pulse signal greater than 50%, whereby the on-duty period **T'** is longer than $T/2$, as shown in **FIG. 4B** (high brightness mode). Conversely, upon receiving an instruction signal to reduce the brightness of the monitor, the main controller **1** makes the duty factor smaller than 50%, whereby the on-duty period **T'** is shorter than $T/2$, as shown in **FIG. 4C** (low brightness mode).

[0028] When the pulse signal **A** (or **B**) is supplied from the main controller **1** to the input terminals **11a**, **11b** of the first inverter **1a** (or second inverter **1b**), the transistors **TR1** and **TR2** are brought into an active state by the currents passing through the resistor **R1** or **R2** during the on-duty period of the pulse signal. Since the winding **L2** of the transformer **T1** serves as a part of the positive feedback circuit, the two transistors **TR1** and **TR2** are activated in turn. For instance, while the transistor **TR1** is turned on, the other transistor **TR2** is turned off. This on-off state is maintained for half the oscillation cycle of the inverter **2a** (or **2b**). During the latter half of the cycle, the transistor **TR1** is turned off, whereas the transistor **TR2** is turned on. This alternate activation of the two transistors is repeated, which results in generation of a sinusoidal voltage. This voltage is applied to the winding **L1** of the transformer **T1**, whereby a much higher sinusoidal voltage is generated across the output terminals of the winding **L3** connected to the lamp **3a** (or **3b**). The frequency of the sinusoidal voltage is 50kHz for example, which is determined by the LC resonance circuit consisting of the transformer **T1** and the capacitors **C1-C2**.

[0029] In the standard brightness mode, the duty factor of the pulse signals **A**, **B** is 50%. Thus, as shown in **FIG. 4A**, the turning-on and the turning-off of the first lamp **3a** coincide with the turning-off and the turning-on of the

second lamp **3b**. In the high brightness mode, as shown in **FIG. 4B**, the second lamp **3b** is turned on while the first lamp **3a** is still in the on-state, and turned off after the first lamp **3a** has been turned off. In the low brightness mode, as shown in **FIG. 4C**, the actuation period (on-light period) of the first lamp **3a** does not overlap that of the second lamp **3b**. In any mode, the first and the second lamps **3a**, **3b** are not simultaneously turned on or off. Thus, the peak current of the power circuit remains small, and the occurrence of noise is reliably prevented.

[0030] According to the present invention, the duty factor of each of the pulse signals **A**, **B** can be varied in a range of 35-90% without compromising the information-presenting quality of the monitor, while the conventional duty factor can be varied only in a range of 50-90%. The 35% minimum duty factor of the present invention is advantageous in the following respect, as compared to the conventional minimum duty factor (50%).

[0031] In the conventional chopping control, the first and the second lamps are simultaneously turned on and off, as previously stated. Thus, when the duty factor of the pulse signals is set to the minimum value 50% to obtain the lowest monitor brightness, the off-light period (during which the two lamps are both turned off) is 50% of one cycle of the pulse signal. According to the present invention, on the other hand, the duty factor is set to 35% to obtain the lowest monitor brightness. In this instance, as seen from **FIG. 4C**, the sum of the on-duty period **T'** (=35%) of the signal **A** and the on-duty period **T''** (=35%) of the signal **B** is 70% of one complete cycle **T** (=100%). Consequently the remaining part (i.e., the off-light period) is 30% of the cycle **T**, which is shorter than the conventional counterpart (50%). This means that the dynamic range of the monitor brightness can be made greater than is conventionally possible.

[0032] Though the lamps **3a**, **3b** are arranged along the longer edges of the LCD panel **7** in the illustrated embodiment, they may be disposed along the shorter edges of the panel **7**. Also, each of the lamps **3a**, **3b** may be replaced by more than one light emitting device. Further, the fluorescent lamps **3a**, **3b** may be replaced by cold cathode tubes or other illuminating devices.

[0033] In the illustrated embodiment, two light emitting units are provided in the backlight. However, three or more light emitting units may be used. When "**N**" light emitting units ($N \geq 2$) are used, the actuation phases of these light emitting units may be shifted by $360^\circ / N$.

[0034] In the examples shown in **FIGS. 4A-4C**, the leading edge (transition from low to high) in one cycle of the pulse signal **A** is phase shifted by 180° relative to the leading edge in a corresponding one of the cycles of the pulse signal **B**. The present invention, however, is not limited to this. For instance, in a high brightness mode, the phase difference between the leading edge of the signal **A** and the corresponding leading edge of the signal **B** may be smaller than 180° , as shown in **FIG. 5A**, or greater than 180° , as shown in **FIG. 5B**. In either case, the leading edge of the signal **A** coincides with the trailing edge (transition from high to low) of the signal **B**.

[0035] The present invention being thus described, it is obvious that the same may be varied in many ways. Such variations are not to be regarded as a departure from the

spirit and scope of the present invention, and all such modifications as would be obvious to those skilled in the art are intended to be included within the scope of the following claims.

1. A backlight for a liquid crystal display comprising:

N light emitting units to be turned on and off based on pulse signals of a predetermined cycle including an on-period and an off-period, where n is an integer equal to or greater than 2; and

a phase controller for controlling a phase of each of the pulse signals;

wherein the on-periods of the respective pulse signals are phase shifted to each other:

2. The backlight according to claim 1, wherein the on-periods of the respective pulse signals are phase shifted by $360^\circ / N$.

3. The backlight according to claim 1, further comprising a rectangular light guide provided with a pair of parallel edges along which the light emitting units are arranged.

4. The backlight according to claim 1, wherein each of the light emitting units comprises a cold cathode tube.

5. The backlight according to claim 1, wherein the light emitting units are operated in at least three modes including a high brightness mode, a standard brightness mode and a low brightness mode, the on-periods of the respective pulse signals being prevented from overlapping each other in the low brightness mode.

* * * * *

专利名称(译)	用于液晶显示器的背光		
公开(公告)号	US20020047556A1	公开(公告)日	2002-04-25
申请号	US09/795422	申请日	2001-02-28
[标]申请(专利权)人(译)	富士通株式会社		
申请(专利权)人(译)	FUJITSU LIMITED		
当前申请(专利权)人(译)	FUJITSU LIMITED		
[标]发明人	TAJIKA TAKAHISA TAKAMATSU MASASHI URAKAWA NORIAKI SASAHARA TAKUJI NISHIYAMA HARUYASU		
发明人	TAJIKA, TAKAHISA TAKAMATSU, MASASHI URAKAWA, NORIAKI SASAHARA, TAKUJI NISHIYAMA, HARUYASU		
IPC分类号	G02F1/133 G09F9/00 G09G3/34 G09G3/36 H05B41/282 H05B41/392 G05F1/00		
CPC分类号	H05B41/2824 Y02B20/186 H05B41/3927		
优先权	2000296223 2000-09-28 JP		
其他公开文献	US6469453		
外部链接	Espacenet USPTO		

摘要(译)

用于液晶显示器的背光包括多个发光单元和用于调节发光单元的相位的相位控制器。基于具有导通时段和关断时段的预定周期的脉冲信号来接通和断开发光单元。在相位控制器的控制下，发光单元以不同的相位接通或断开。

