

US007733453B2

(12) **United States Patent**
Ahn

(10) **Patent No.:** **US 7,733,453 B2**
(45) **Date of Patent:** **Jun. 8, 2010**

(54) **METHOD OF FABRICATING A LIQUID CRYSTAL DISPLAY DEVICE USING A THREE MASK PROCESS AND DOUBLE LAYER ELECTRODES**

6,411,358 B2 *	6/2002	Song et al.	349/141
6,624,446 B2 *	9/2003	Kim	257/72
2001/0005238 A1 *	6/2001	Yun et al.	349/43
2001/0007779 A1 *	7/2001	Lee et al.	438/30
2001/0048500 A1 *	12/2001	Lim et al.	349/141
2002/0130324 A1 *	9/2002	Song et al.	257/72
2003/0122982 A1 *	7/2003	Shin et al.	349/43
2004/0119928 A1 *	6/2004	Niwano et al.	349/141
2005/0078246 A1 *	4/2005	Yoo et al.	349/122

(75) Inventor: **Byung Chul Ahn**, Ahnyang-si (KR)

(73) Assignee: **LG Display Co., Ltd.**, Seoul (KR)

(*) Notice: Subject to any disclaimer, the term of this patent is extended or adjusted under 35 U.S.C. 154(b) by 742 days.

* cited by examiner

Primary Examiner—David Nelms

Assistant Examiner—Jessica M Merlin

(74) Attorney, Agent, or Firm—McKenna Long & Aldridge

(21) Appl. No.: **11/312,715**

(22) Filed: **Dec. 21, 2005**

(65) **Prior Publication Data**

US 2006/0146256 A1 Jul. 6, 2006

(30) **Foreign Application Priority Data**

Dec. 31, 2004 (KR) 10-2004-118570

(51) **Int. Cl.**

G02F 1/13 (2006.01)

G02F 1/1343 (2006.01)

(52) **U.S. Cl.** **349/141**; 349/147; 349/187

(58) **Field of Classification Search** 349/141, 349/187-192, 147-148

See application file for complete search history.

(56) **References Cited**

U.S. PATENT DOCUMENTS

6,323,051 B1 * 11/2001 Shimada 438/30

(57) **ABSTRACT**

A fringe field switching thin film transistor substrate includes a gate electrode connected to the gate line, a source electrode connected to the data line, a drain electrode opposed to the pixel electrode and a semiconductor layer defining a channel between the source electrode and the drain electrode. A common electrode extends from the common line into the pixel area. A pixel electrode extends from the drain electrode into the pixel area overlapping the common electrode with the gate insulating film. The gate line and the common line are formed from a first conductive layer group having double conductive layers, and the common electrode is formed by an extension of the lowermost layer of the common line. The data line, the source electrode and the drain electrode are formed of a second conductive layer group having double conductive layers.

13 Claims, 27 Drawing Sheets

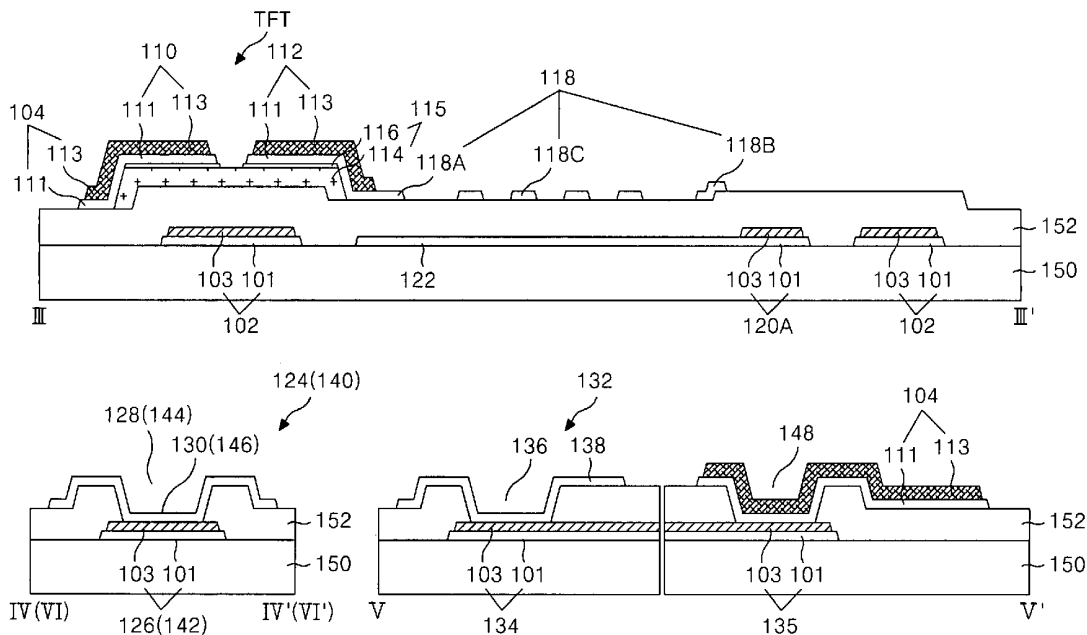
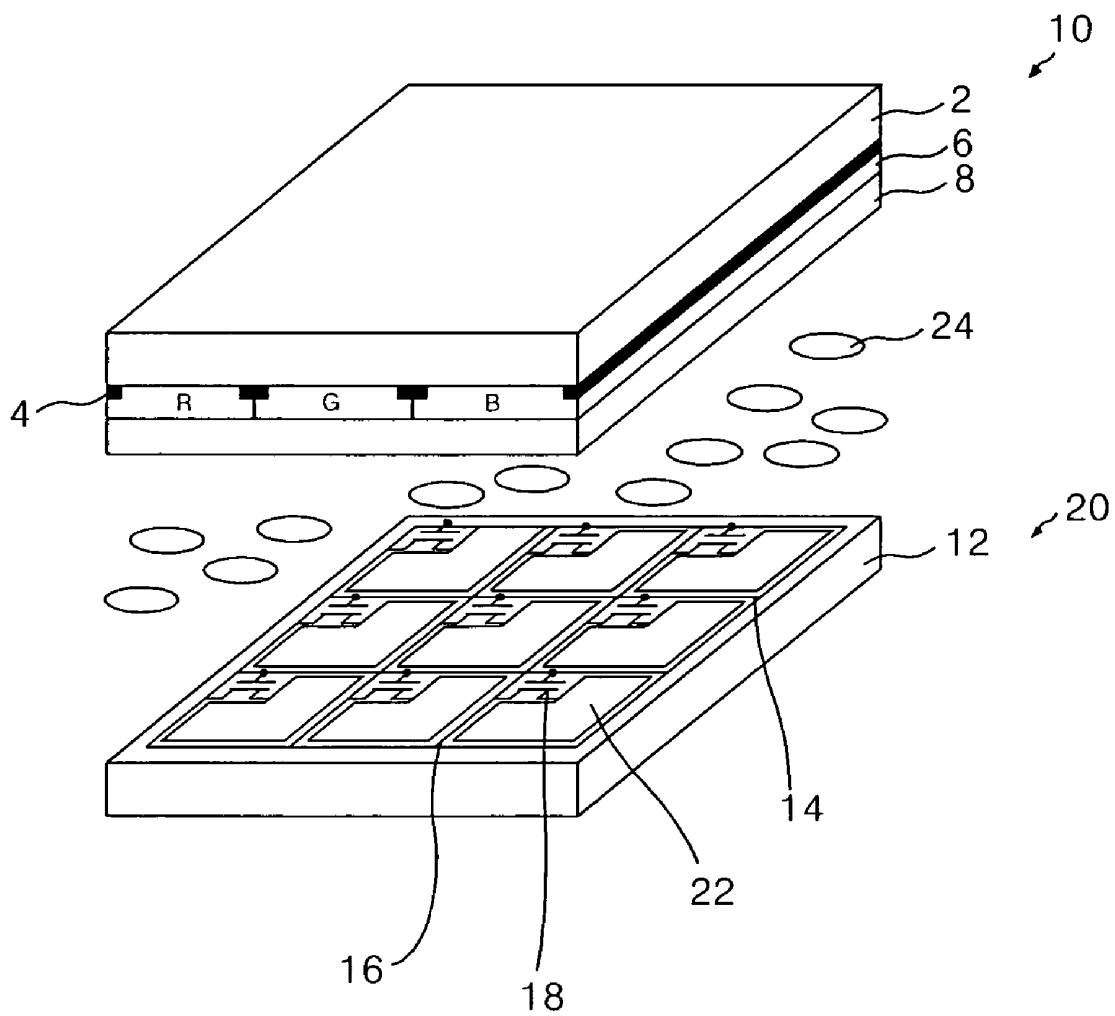


FIG. 1
RELATED ART



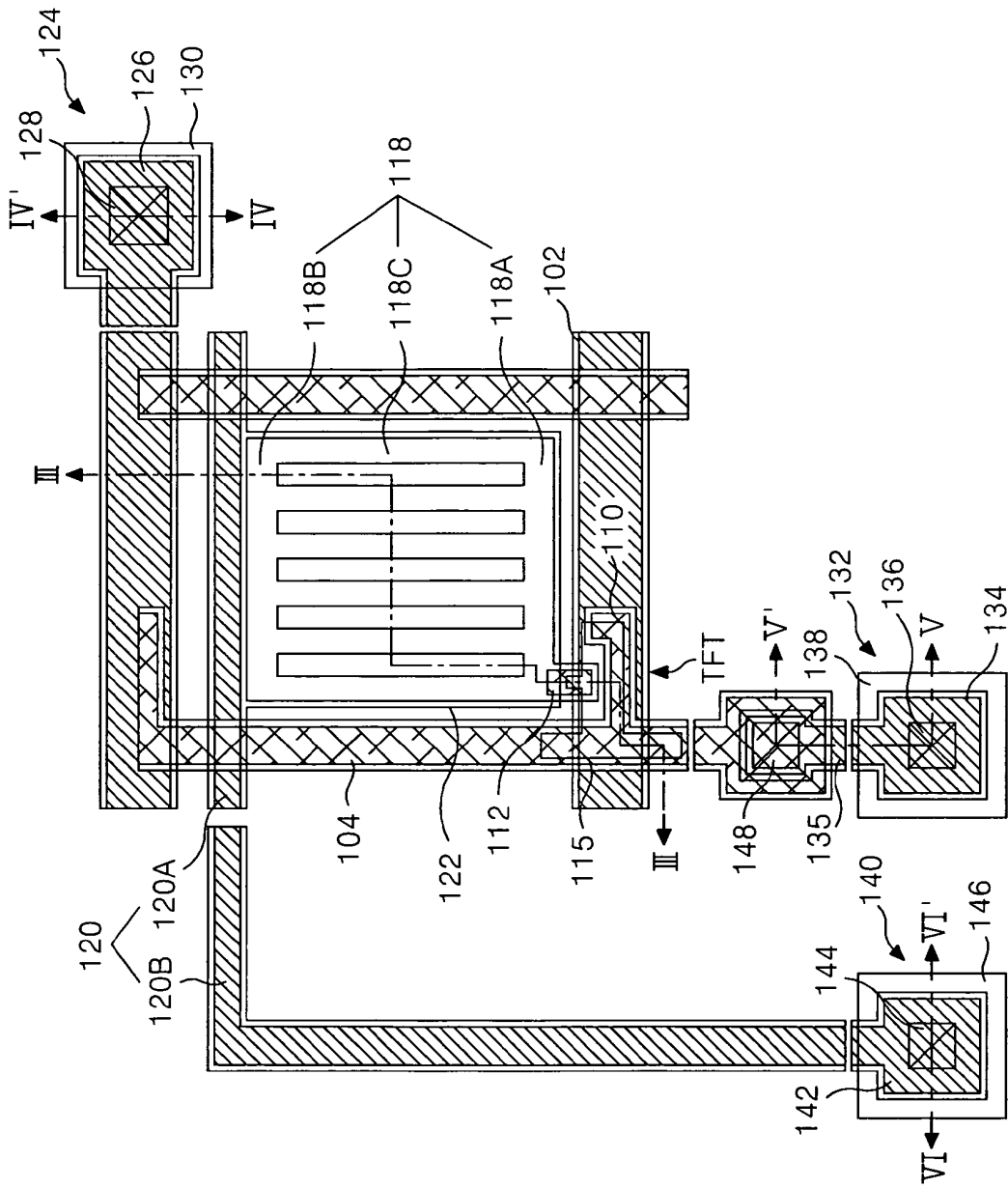
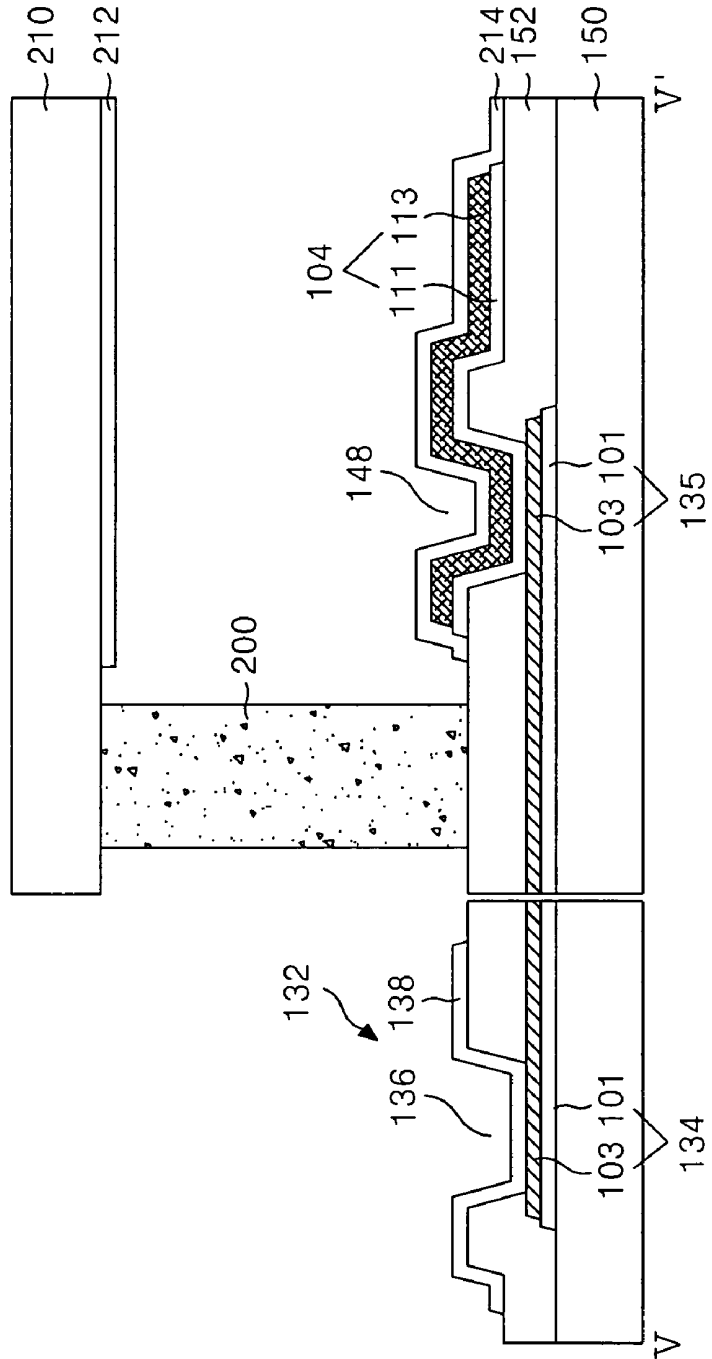


FIG. 2

FIG. 4



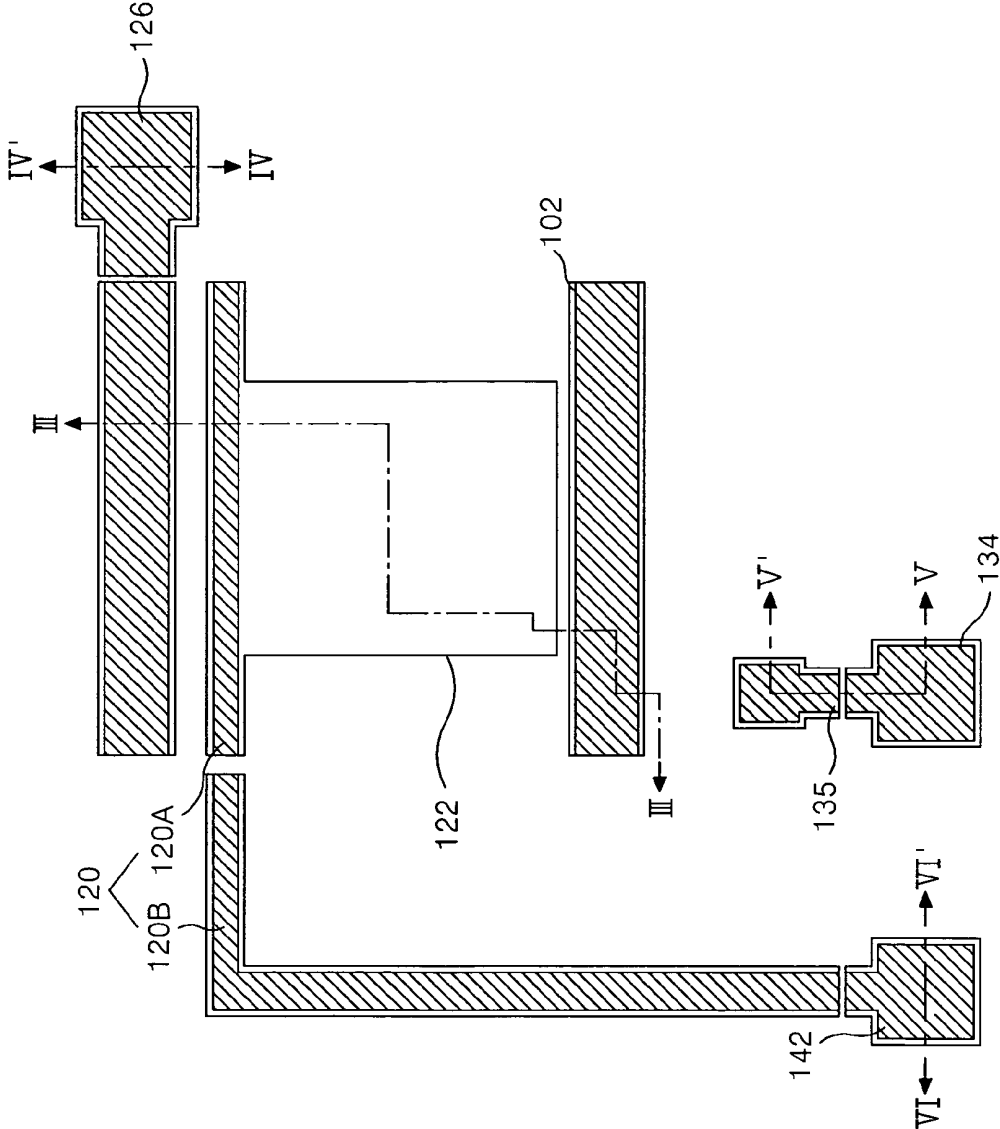


FIG. 5A

FIG. 5B

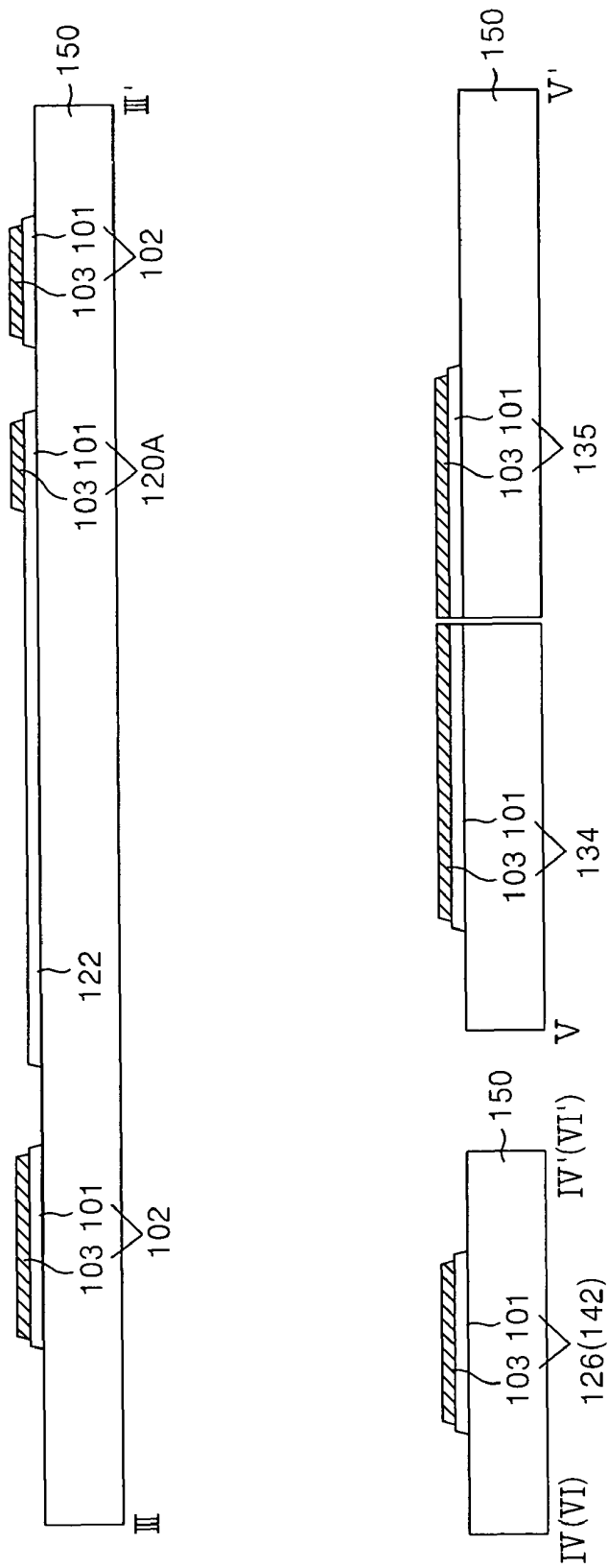


FIG. 6A

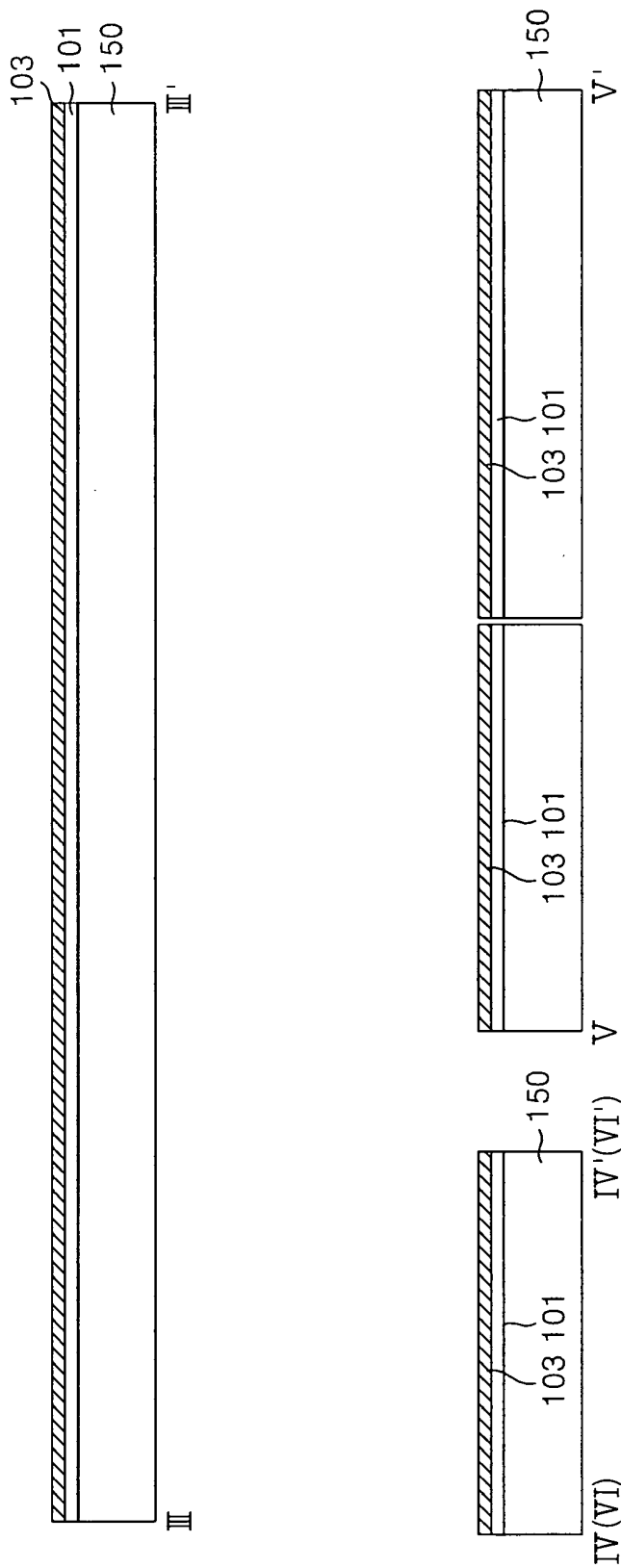


FIG. 6B

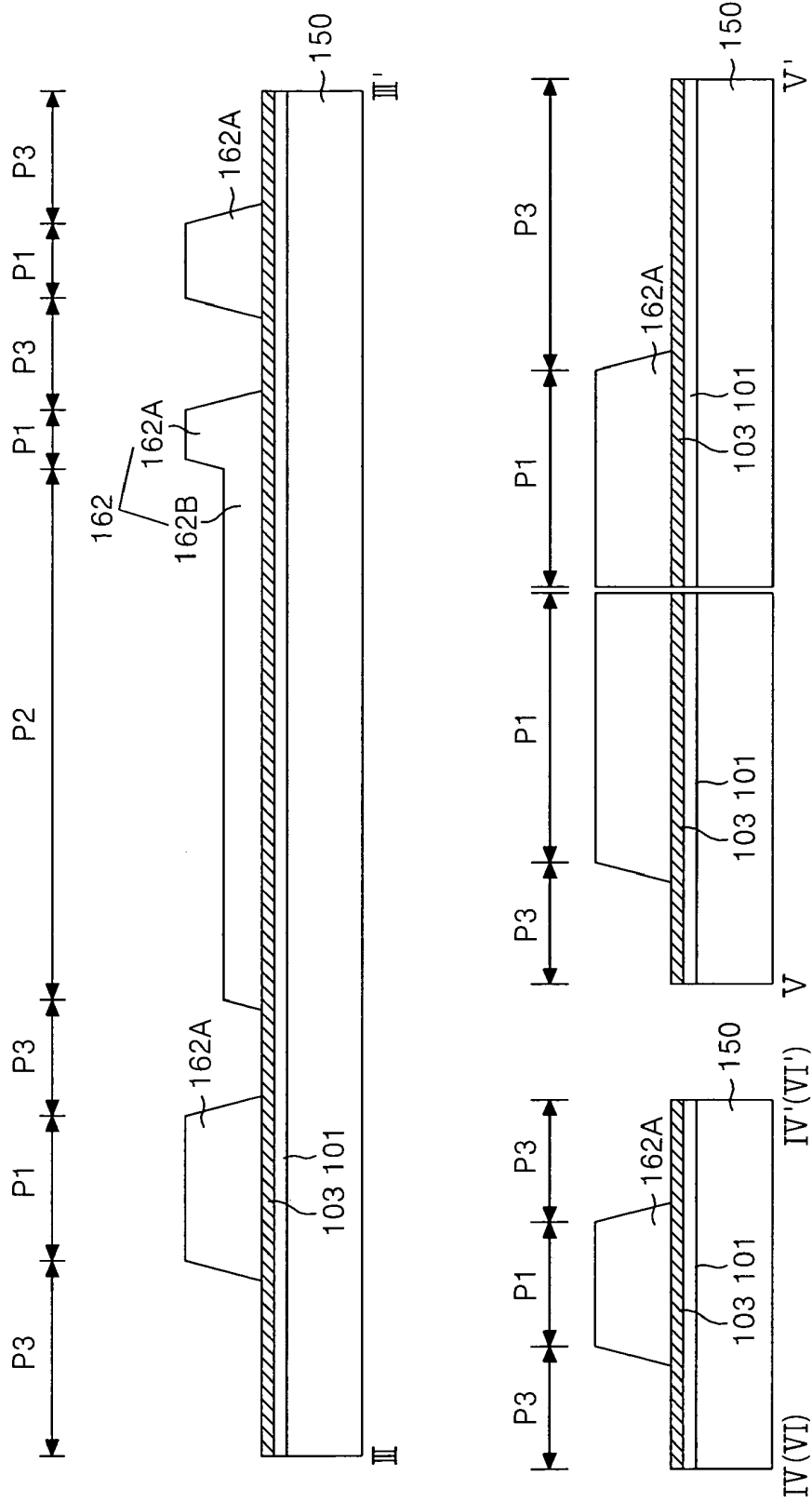


FIG. 6C

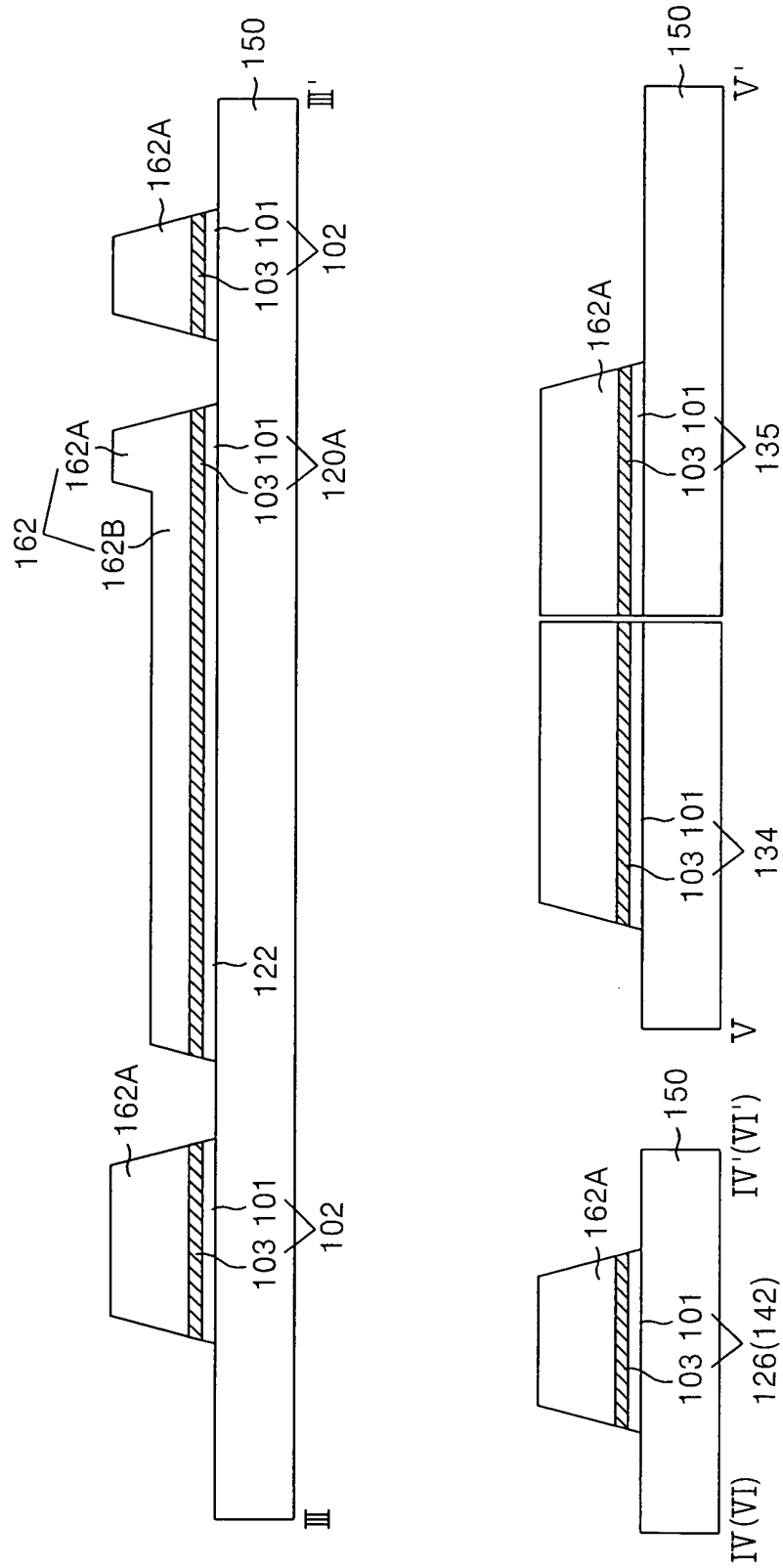
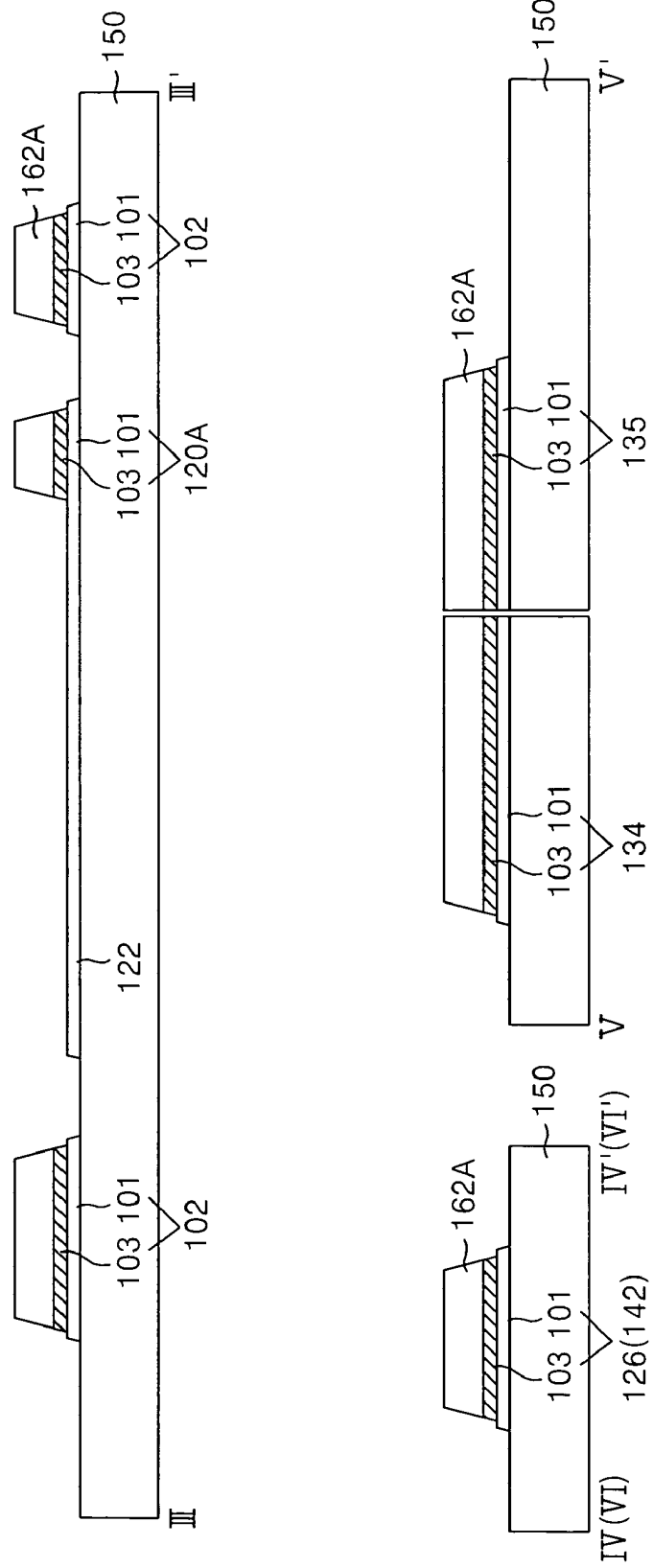


FIG. 6D



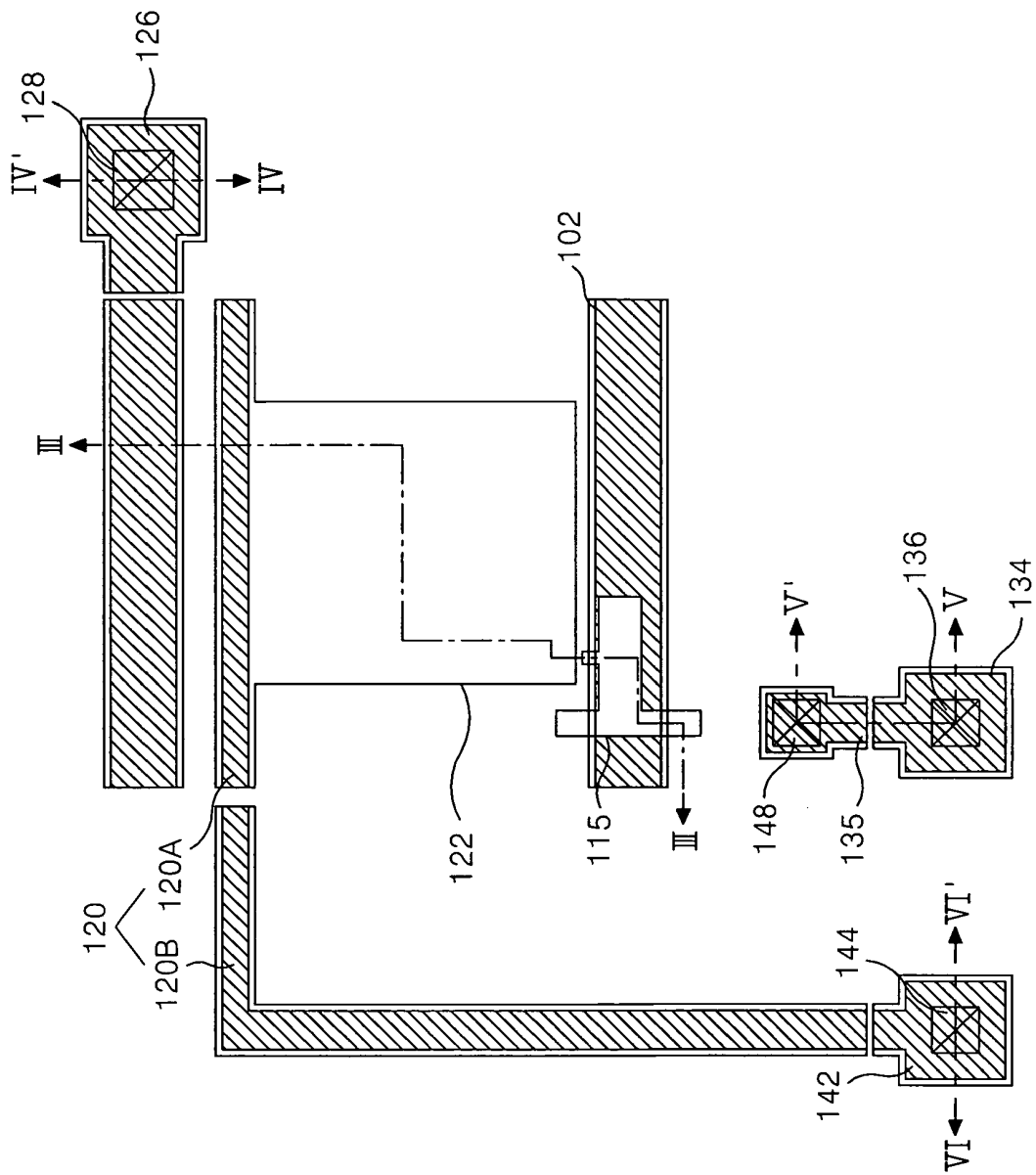


FIG. 7A

FIG. 7B

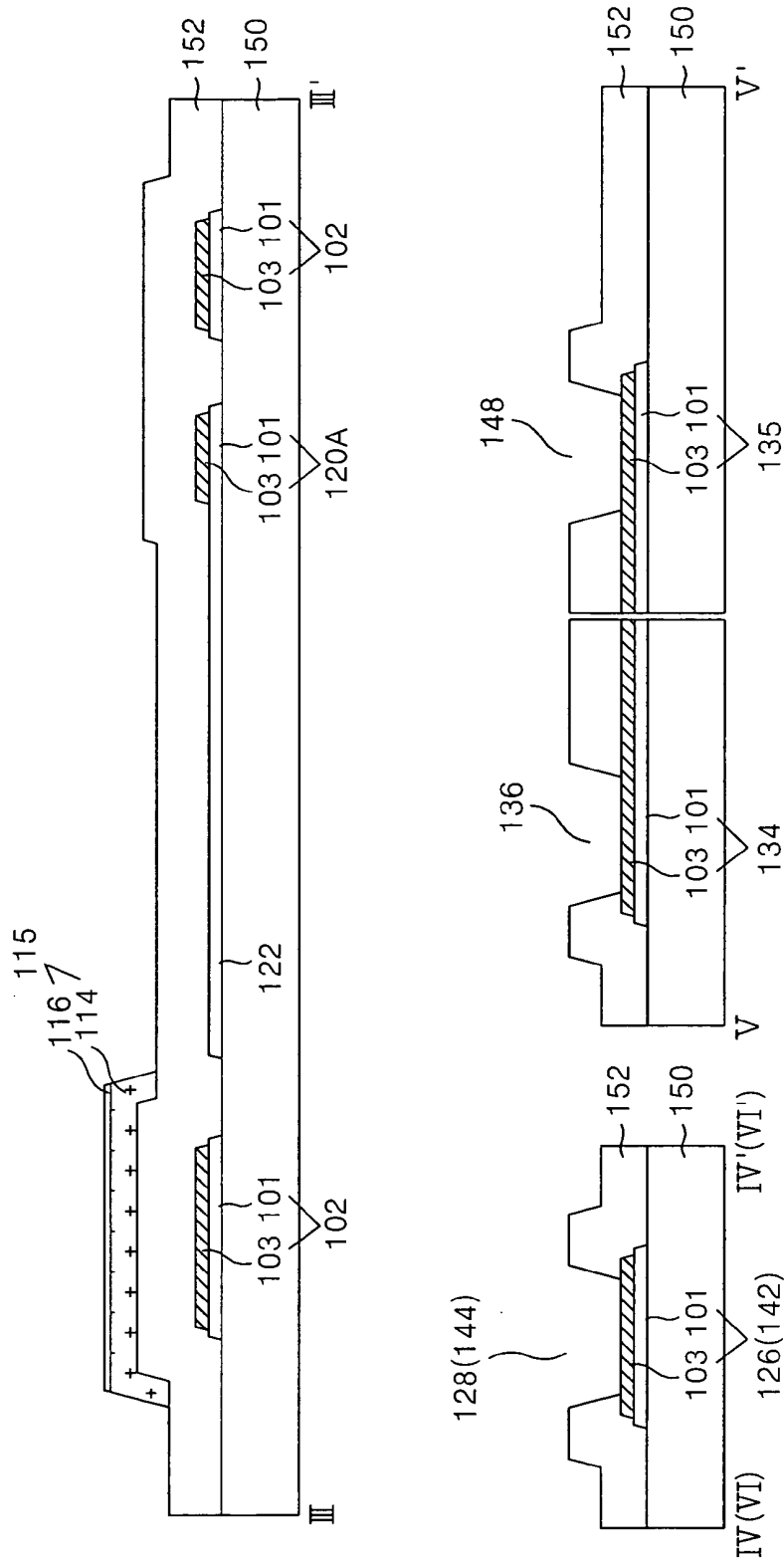


FIG. 8A

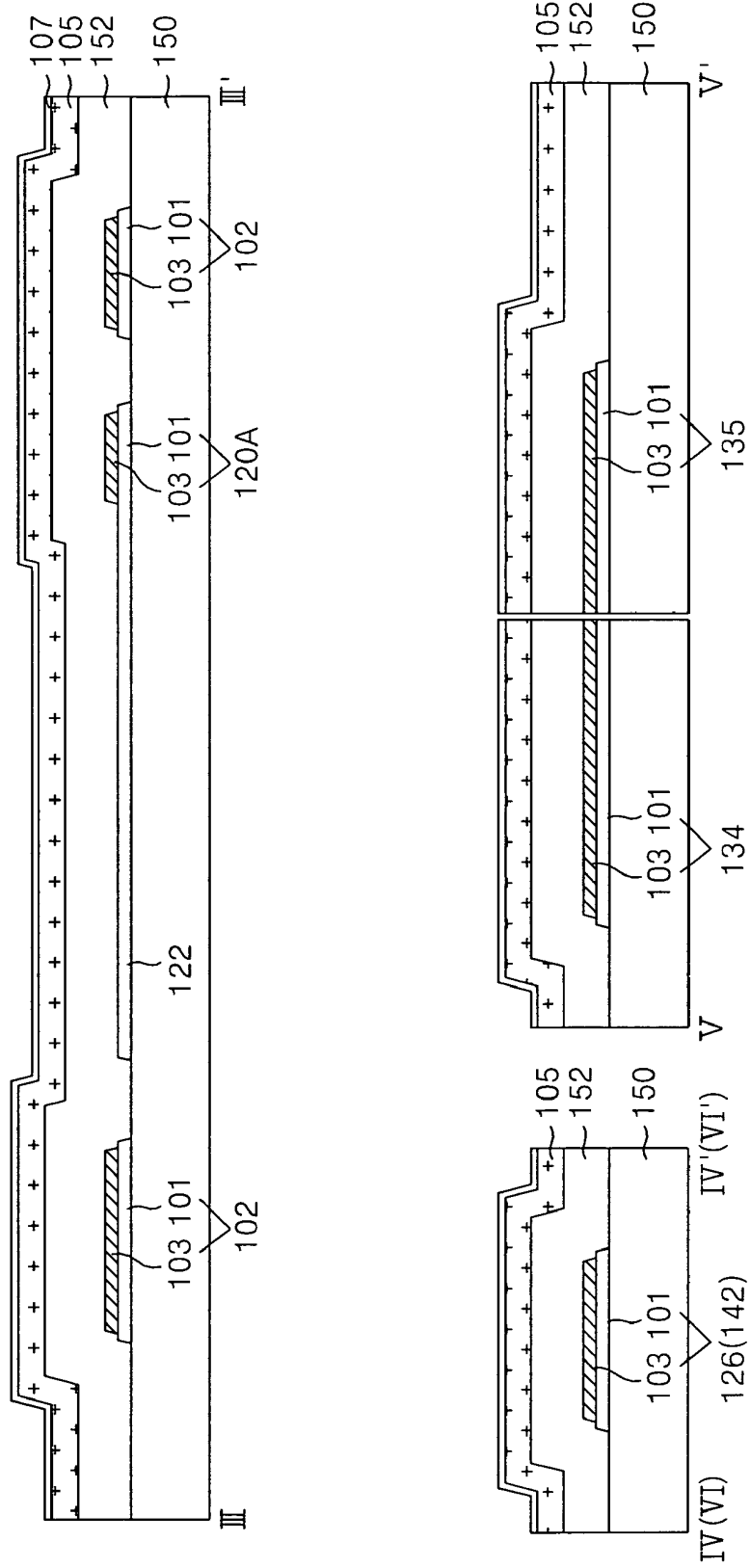


FIG. 8B

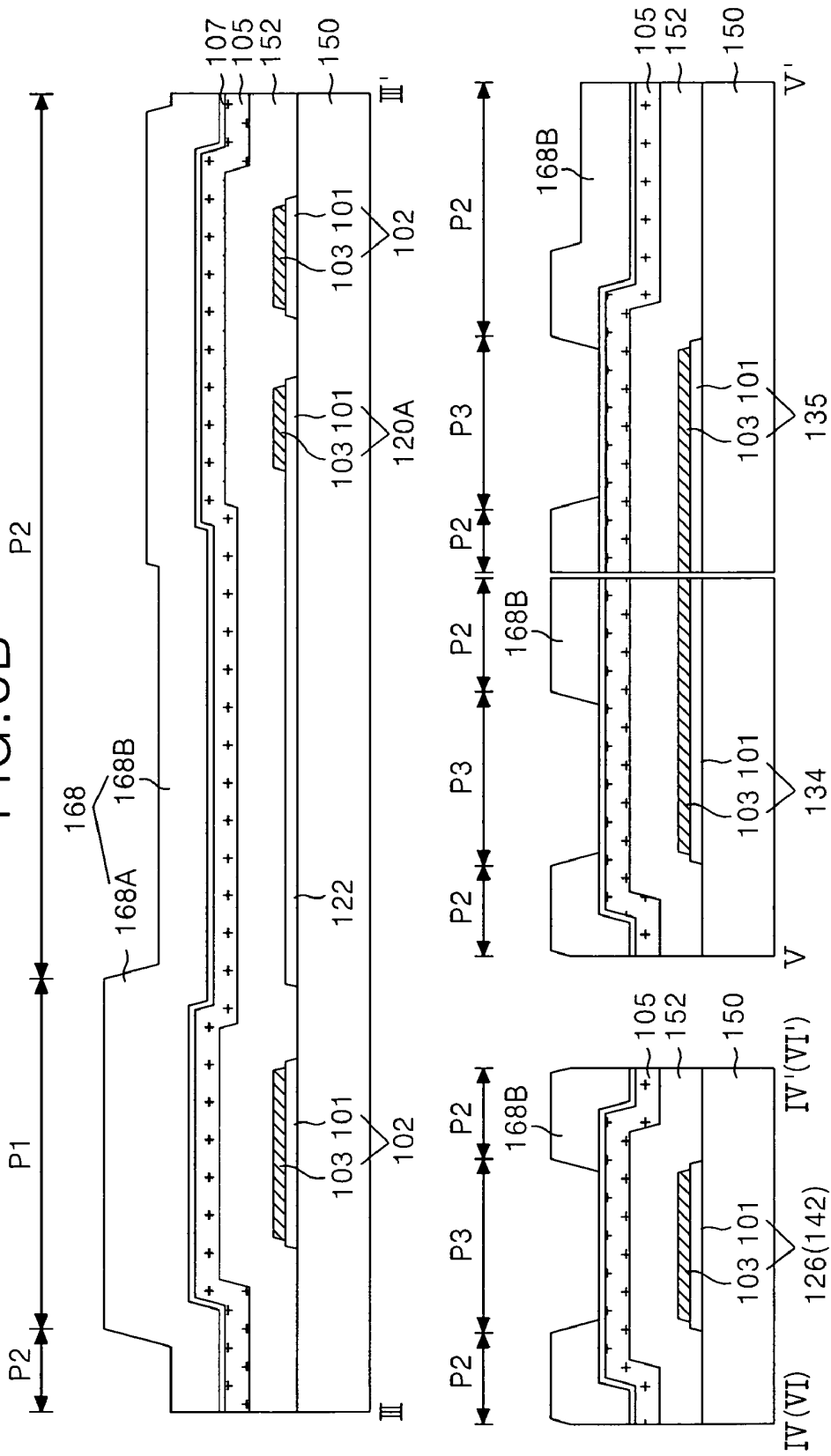


FIG. 8C

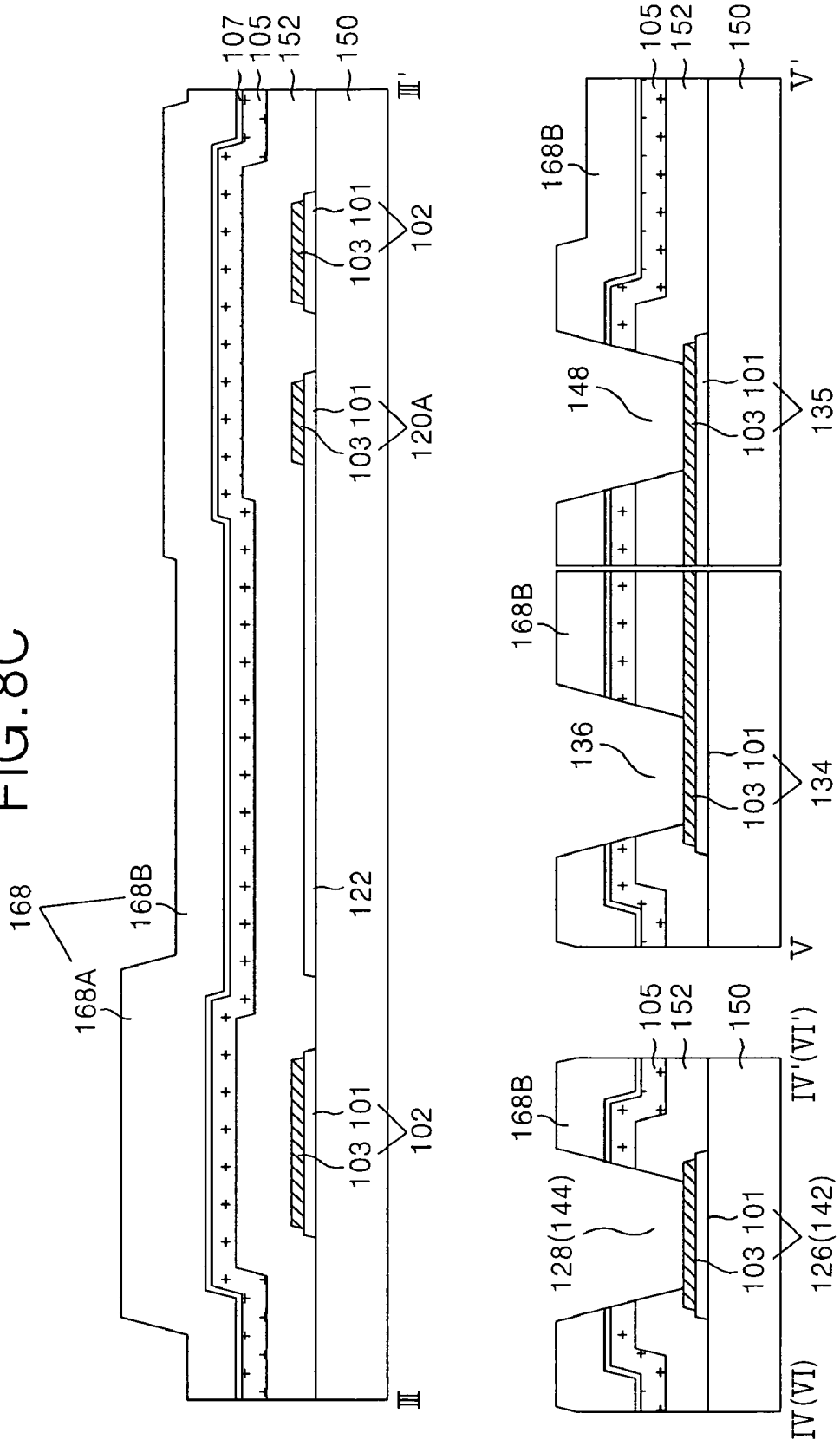


FIG. 8D

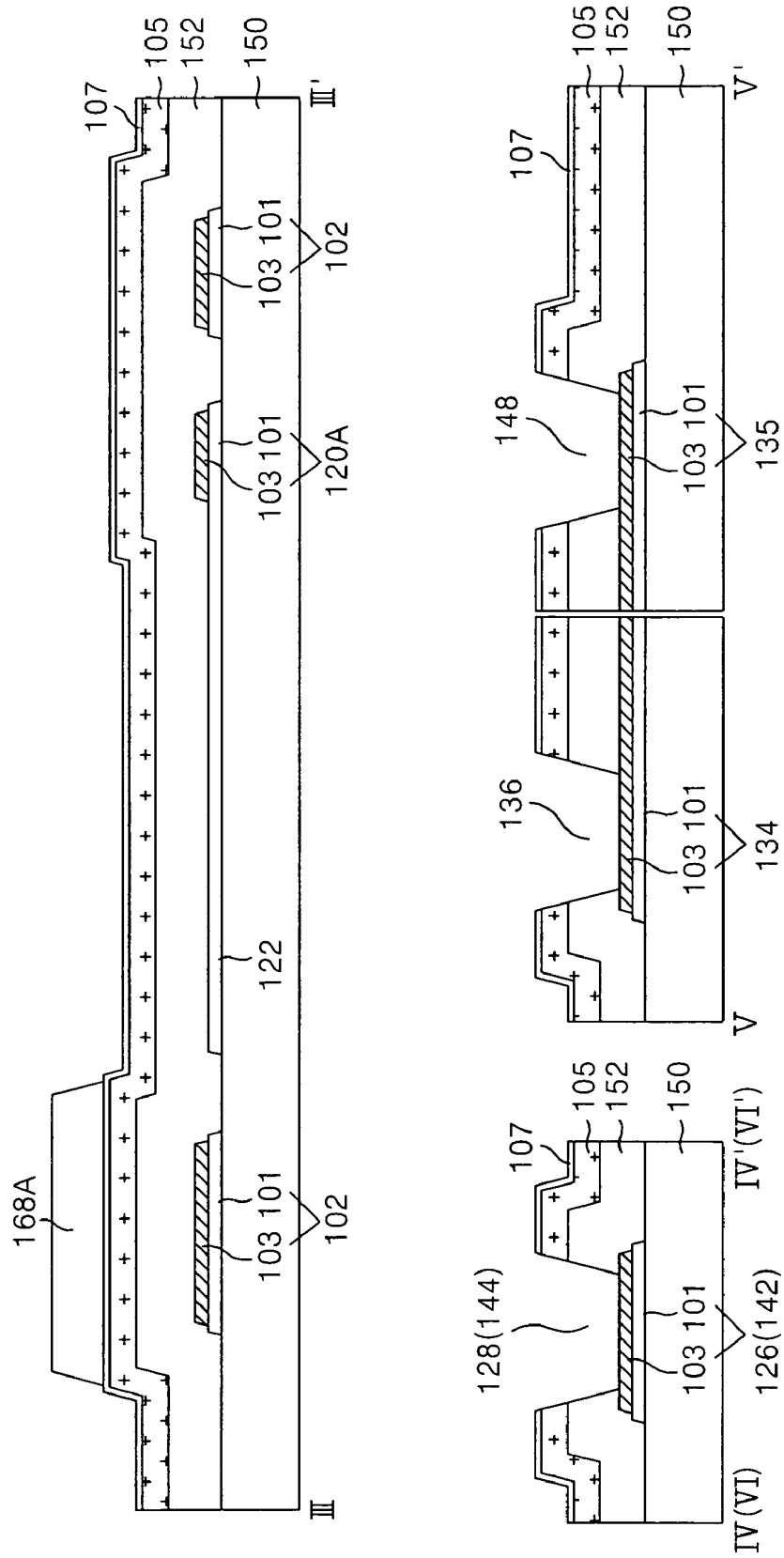


FIG. 8F

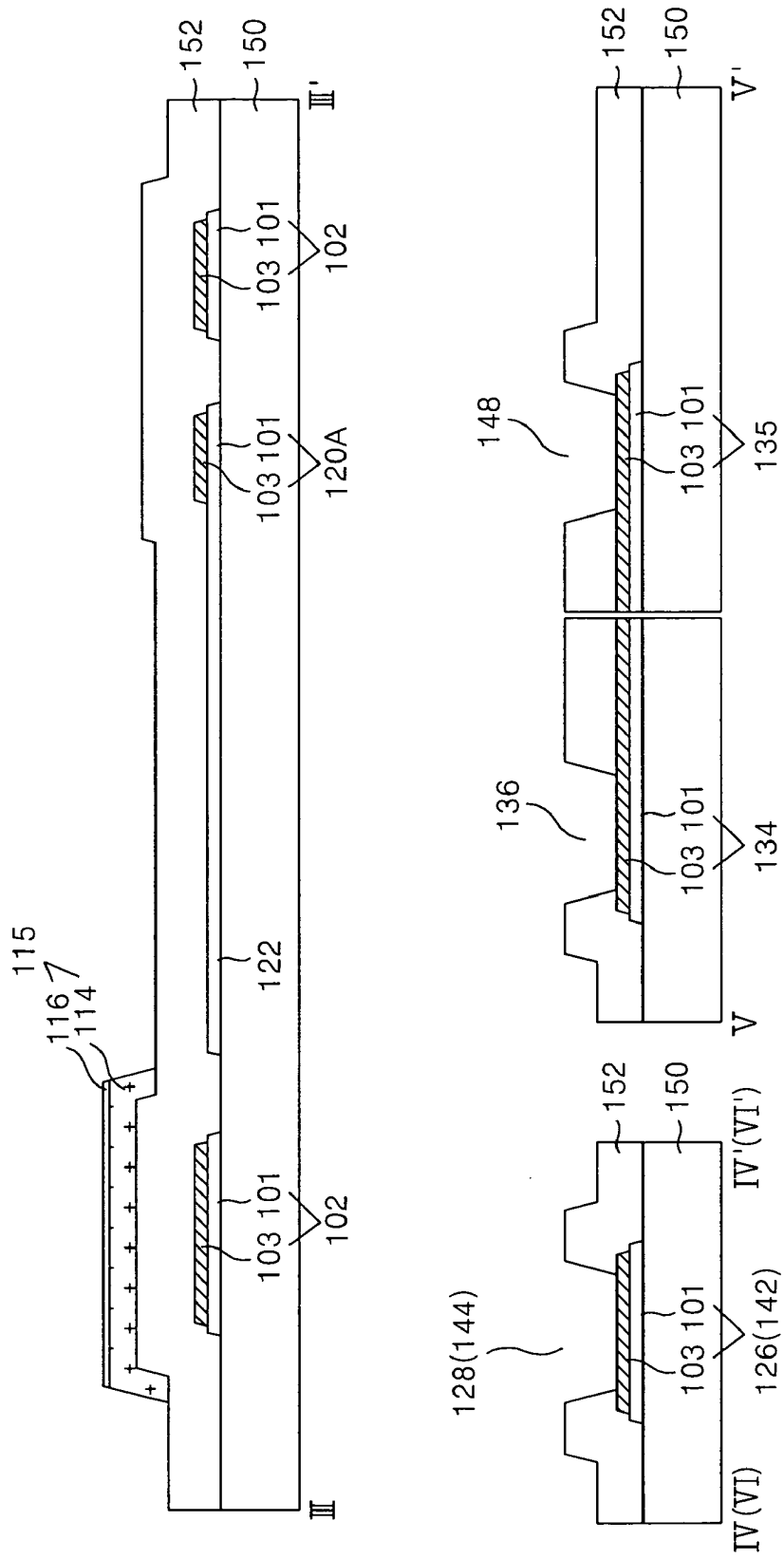


FIG. 9B

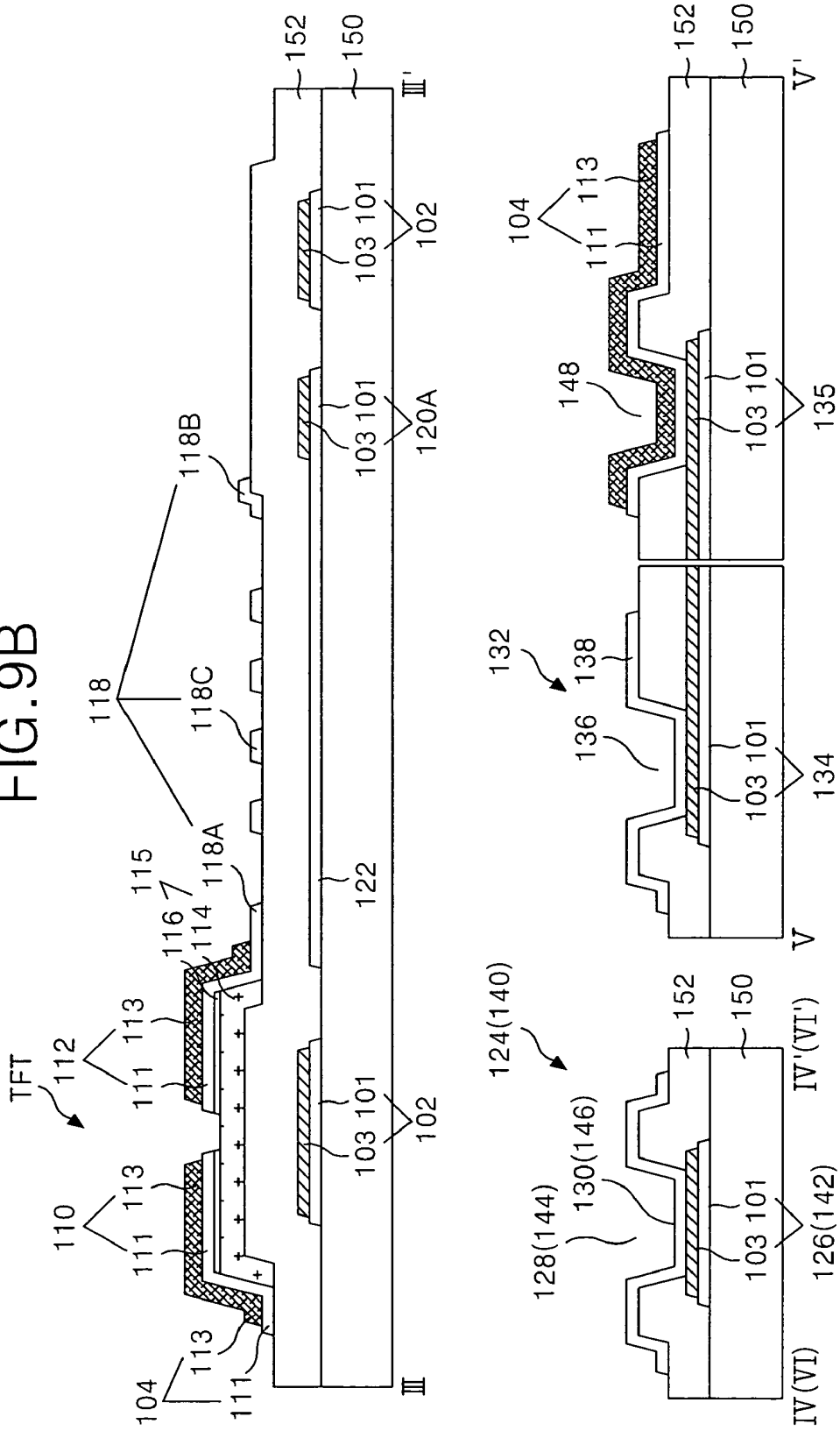


FIG. 10A

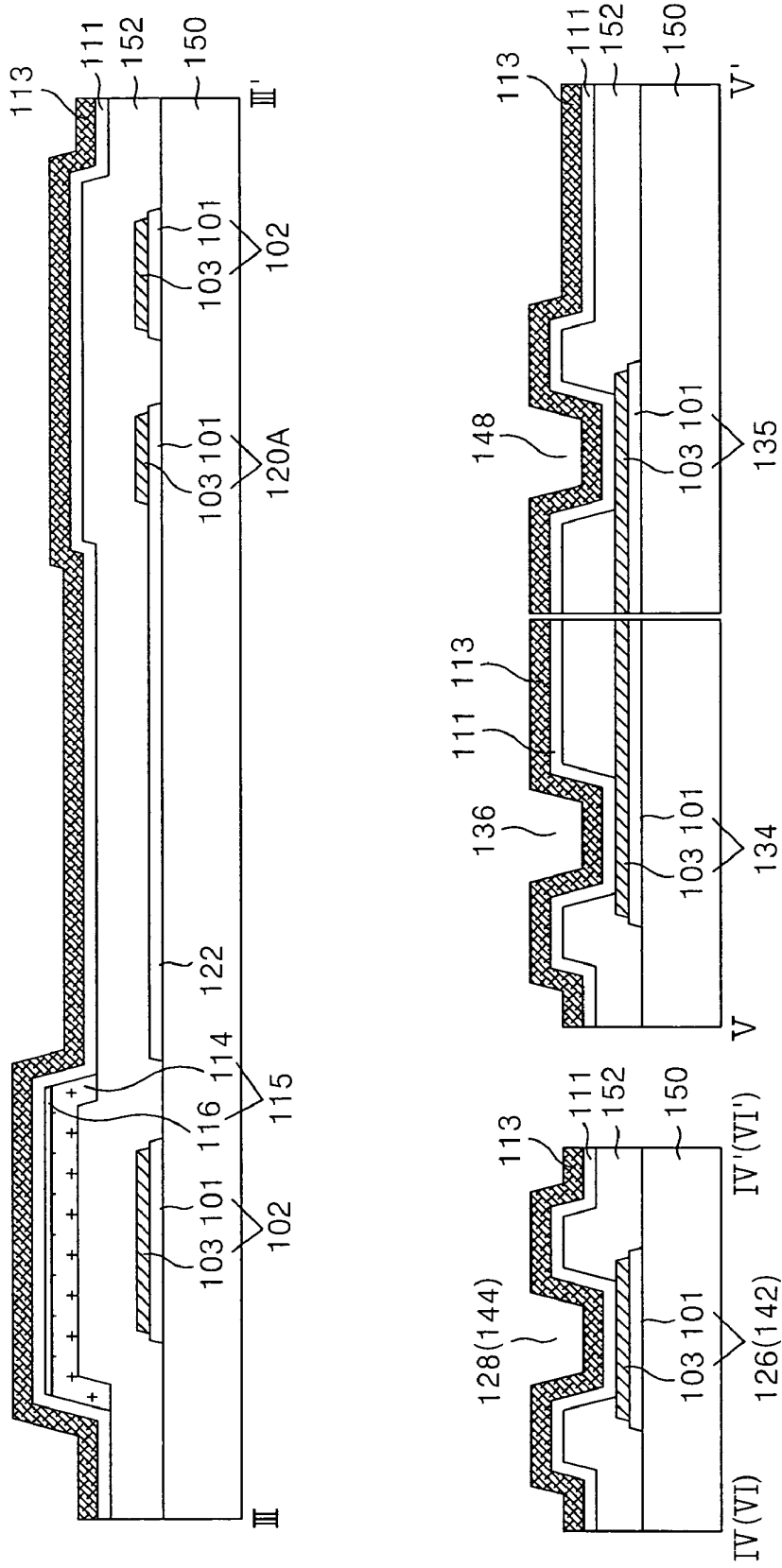


FIG. 10B

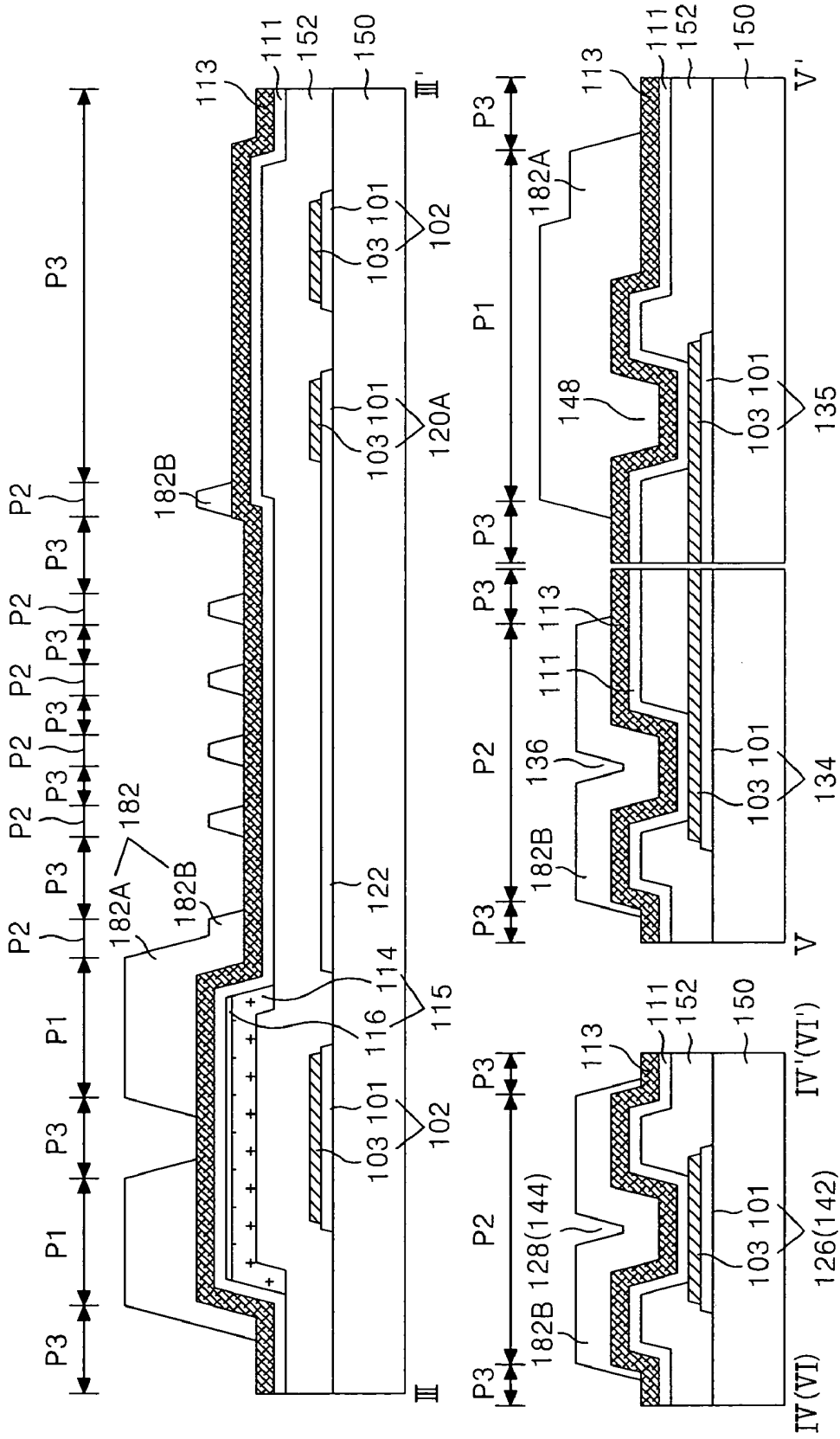


FIG. 10C

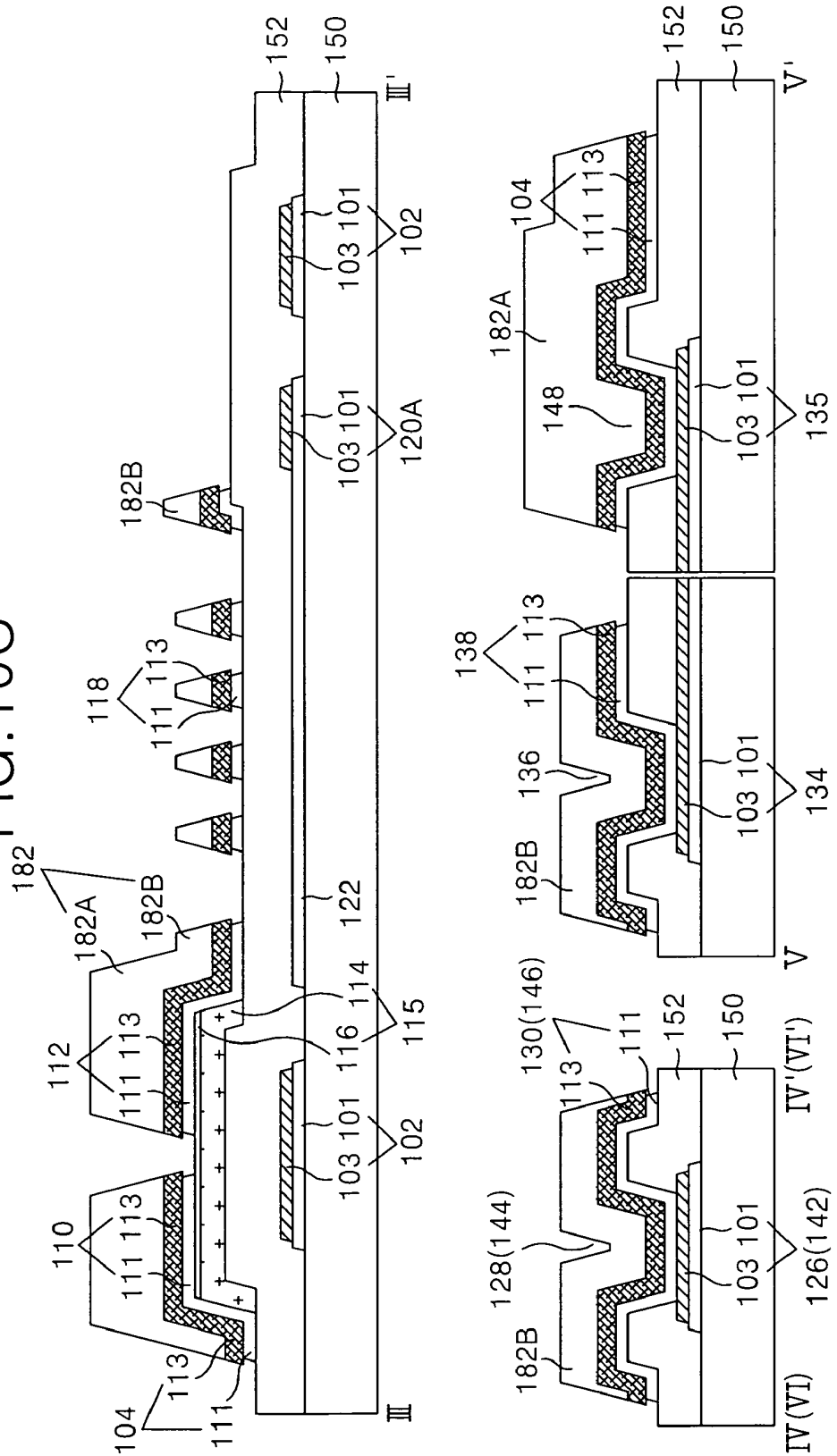


FIG. 10D

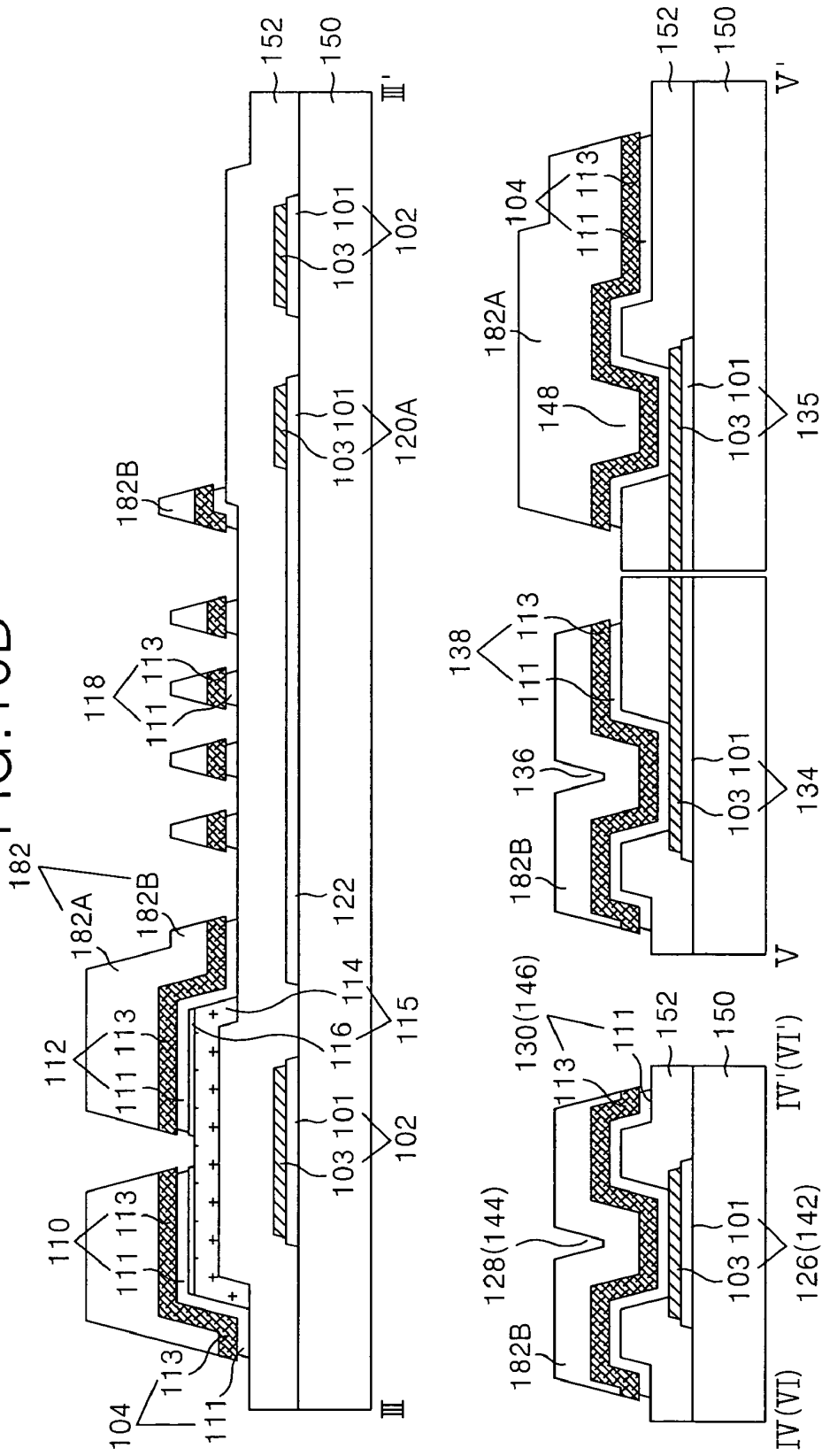
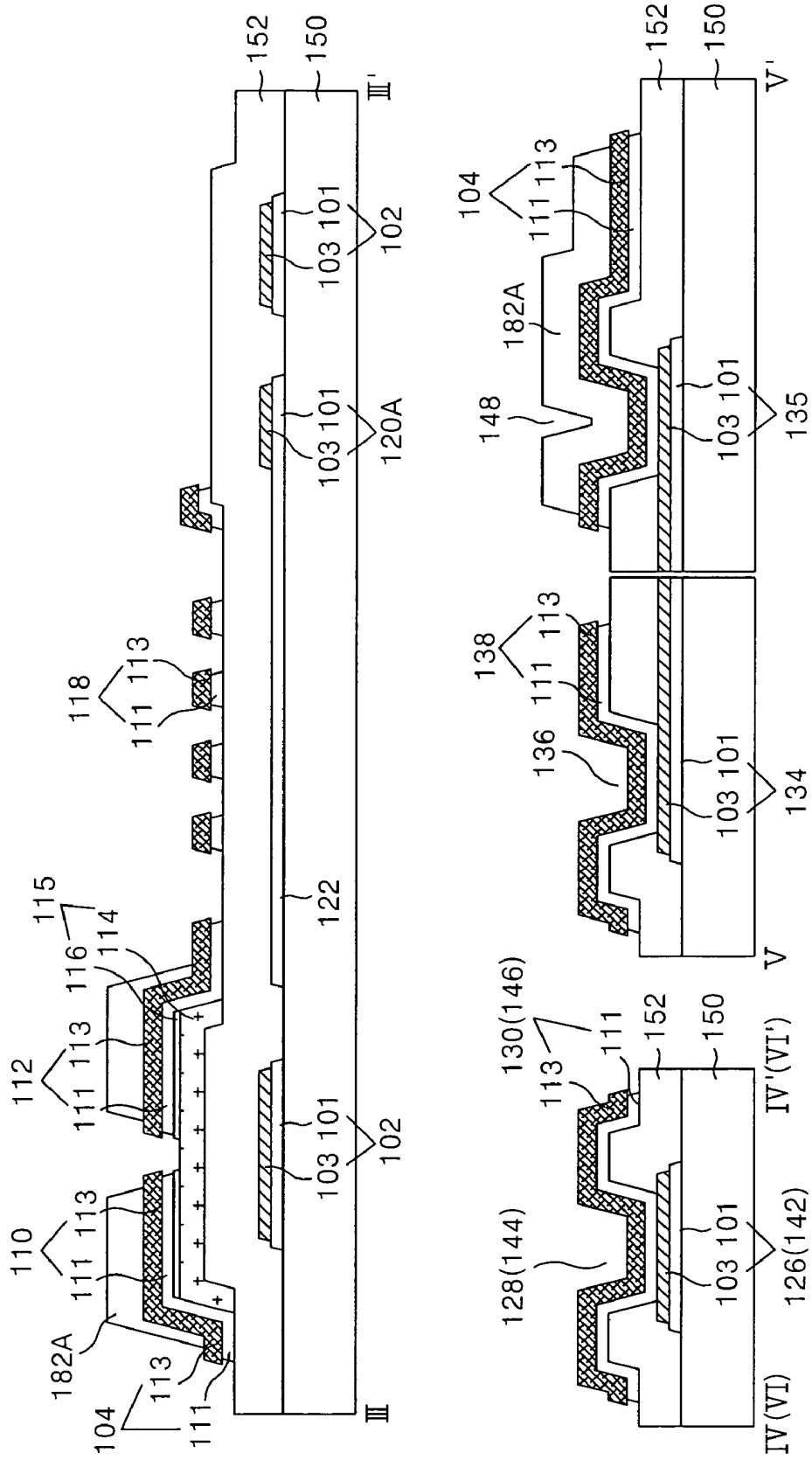


FIG. 10E



METHOD OF FABRICATING A LIQUID CRYSTAL DISPLAY DEVICE USING A THREE MASK PROCESS AND DOUBLE LAYER ELECTRODES

This application claims the benefit of Korean Patent Application No. P2004-118570 filed in Korea on Dec. 31, 2004, which is hereby incorporated by reference for all purposes as if fully set forth herein.

BACKGROUND OF THE INVENTION

1. Field of the Invention

This invention relates to a liquid crystal display device of fringe field switching type, and more particularly to a thin film transistor substrate of fringe field switching type and a fabricating method thereof that are adaptive for simplifying a process.

2. Description of the Related Art

Generally, a liquid crystal display device controls light transmittance of a liquid crystal having a dielectric anisotropy using an electric field to thereby display a picture. To this end, a liquid crystal display device includes a liquid crystal display panel for displaying a picture by a liquid crystal cell matrix, and a driving circuit for driving the liquid crystal display panel.

Referring to FIG. 1, a related art liquid crystal display panel is comprised of a color filter substrate **10** and a thin film transistor substrate **20** that are joined to each other with a liquid crystal **24** therebetween.

The color filter substrate **10** includes a black matrix **4**, a color filter **6** and a common electrode **8** that are sequentially provided on an upper glass substrate **2**. The black matrix **4** is provided in a matrix type on the upper glass substrate **2**. The black matrix **4** divides an area of the upper glass substrate **2** into a plurality of cell areas to be provided with the color filter **6**, and prevents a light interference between adjacent cells and an external light reflection. The color filter **6** is provided at the cell area divided by the black matrix **4** in such a manner to be divided into red (R), green (G) and blue (B) ones, thereby transmitting red, green and blue lights. The common electrode **8** is formed of a transparent conductive layer entirely formed onto the color filter **6**, and supplies a common voltage Vcom that serves as a reference voltage upon driving of the liquid crystal **24**. Further, an over-coat layer (not illustrated) for smoothing the color filter **6** may be provided between the color filter **6** and the common electrode **8**.

The thin film transistor substrate **20** includes a thin film transistor **18** and a pixel electrode **22** provided for each cell area defined by an crossing between a gate line **14** and a data line **16** on a lower glass substrate **12**. The thin film transistor **18** applies a data signal from the data line **16** to the pixel electrode **22** in response to a gate signal from the gate line **14**. The pixel electrode **22** formed of a transparent conductive layer supplies a data signal from the thin film transistor **18** to drive the liquid crystal **24**.

The liquid crystal **24** having a dielectric anisotropy is rotated in accordance with an electric field formed by a data signal from the pixel electrode **22** and a common voltage Vcom from the common electrode **8** to control light transmittance, thereby implementing a gray scale level.

Further, a liquid crystal display panel includes a spacer (not illustrated) for uniformly maintaining a cell gap between the color filter substrate **10** and the thin film transistor substrate **20**. The spacer employs a ball spacer or a column spacer.

In such the liquid crystal display panel, the color filter substrate **10** and the thin film transistor substrate **20** are

formed by a plurality of mask processes. Herein, one mask process includes a lot of processes such as thin film deposition (coating), cleaning, photolithography (hereinafter, photo process), etching, photo-resist stripping and inspection processes, etc. Particularly, since the thin film transistor substrate includes the semiconductor process and requires the plurality of mask processes, it has a complicate fabricating process to act as a major factor in the manufacturing cost rise of the liquid crystal display panel.

Meanwhile, the liquid crystal display panel is largely classified into a vertical electric field applying type and a horizontal electric field applying type depending upon with a direction of the electric field driving the liquid crystal.

The liquid crystal display panel of vertical electric field applying type drives a liquid crystal in a twisted nematic (TN) mode with a vertical electric field formed between a pixel electrode and a common electrode arranged in opposition to each other on the upper and lower substrate. The liquid crystal display panel of vertical electric field applying type has an advantage of a large aperture ratio while having a drawback of a narrow viewing angle about 90°.

The liquid crystal display panel of horizontal electric field applying type drives a liquid crystal in an in plane switching (IPS) mode with a horizontal electric field between the pixel electrode and the common electrode arranged in parallel to each other on the lower substrate. The liquid crystal display panel of horizontal electric field applying type has an advantage of a wide viewing angle about 160°, but has a disadvantage of low aperture ratio and transmittance.

Recently, in order to overcome the disadvantage of the liquid crystal display panel of horizontal electric field applying type, there has been suggested a liquid crystal display panel of fringe field switching (FFS) type operated by a fringe field. The FFS-type liquid crystal display panel includes a common electrode and a pixel electrode having an insulating film therebetween at each pixel area, and is provided such that a distance between the common electrode and pixel electrodes is narrower than a distance between the upper substrate and the lower substrates, to thereby provide a fringe field. Further, the fringe field allows all of liquid crystal molecules filled between the upper and lower substrates to be operated at each pixel area to thereby improve an aperture ratio and a transmittance.

However, since the thin film transistor substrate included in the FFS-type liquid crystal display panel also requires a plurality of mask processes including a semiconductor process, it has a problem of a complicate fabricating process.

SUMMARY OF THE INVENTION

Accordingly, it is an object of the present invention to provide a thin film transistor substrate of fringe field switching type and a fabricating method thereof that are adaptive for simplifying a process.

In order to achieve these and other advantages of the invention, a liquid crystal display device according to one aspect of the present invention includes a gate line on a substrate; a data line crossing the gate line with a gate insulating film to define a pixel area; a thin film transistor including a gate electrode connected to the gate line, a source electrode connected to the data line, a drain electrode opposed to the pixel electrode and a semiconductor layer for defining a channel between the source electrode and the drain electrode; a common line provided in parallel to the gate line on the substrate; a common electrode extended from the common line and formed in the pixel area; and a pixel electrode extended from the drain electrode into the pixel area in a such manner as to overlap the

common electrode with the gate insulating film, wherein the gate line and the common line are formed of a first conductive layer group having at least double conductive layers, the common electrode is formed by an extension of the lowermost layer of the common line, and wherein the data line, the source electrode, the drain electrode are formed of a second conductive layer group having at least double conductive layers, and the pixel electrode is formed by an extension of the lowermost layer of the drain electrode.

In the liquid crystal display device, a storage capacitor is provided by an overlapping of the drain electrode with the common electrode.

In the liquid crystal display device, the common electrode has a plate shape, and the pixel electrode has a rib shape.

The liquid crystal display device further includes a gate pad connected to the gate line, a data pad to be connected to the data line and a common pad connected to the common line, wherein each of the gate pad, the data pad and the common pad includes a lower pad electrode formed of the first conductive layer group; a contact hole passing through the gate insulating film to expose the lower pad electrode and an upper pad electrode connected, via the contact hole, to the lower pad electrode and formed of the lowermost layer of the second conductive layer group.

The liquid crystal display device further includes a data link provided such that the first conductive layer group is extended from a lower electrode of the data pad to have a portion thereof overlapped with the data line; and a second contact hole passing through the gate insulating film to connect the data line to the data link.

In the liquid crystal display device, the second contact hole is formed in an area to be sealed by the sealant.

The liquid crystal display device further includes an alignment film on the data line, the source electrode, the drain electrode and the pixel electrode.

In the liquid crystal display device, the second contact hole is formed under the alignment film.

In the liquid crystal display device, the semiconductor pattern is formed at a position to be provided with the thin film transistor.

In the liquid crystal display device, each of the first and second conductive layer includes a lowermost layers thereof having a transparent conductive layer and an upper layer having at least one of a single layer formed of a metal material such as Mo, Ti, Cu, AlNd, Al, Cr, a Mo-alloy, a Cu-alloy or an Al-alloy, a double layer and a triple layer formed of Al/Cr, Al/Mo, Al(Nd)/Al, Al(Nd)/Cr, Mo/Al(Nd)/Mo, Cu/Mo, Ti/Al(Nd)/Ti, Mo/Al, Mo/Ti/Al(Nd), Cu-alloy/Mo, Cu-alloy/Al, Cu-alloy/Mo-alloy, Cu-alloy/Al-alloy, Al/Mo-alloy, Mo-alloy/Al, Al-alloy/Mo-alloy, Mo-alloy/Al-alloy, and Mo/Al-alloy.

In the liquid crystal display device, the first conductive group has step coverage having a stepwise shape.

In the liquid crystal display device, the second conductive group has step coverage having a stepwise shape.

A method of fabricating a liquid crystal display device according to still another aspect of the present invention includes a first mask process forming a first mask pattern group including a gate line have a first conductive layer group having at least double conductive layers, a gate electrode connected to the gate line, a common line parallel to the gate line, a common electrode formed by an extension of the lowermost layer of the common line having a single layer structure on a substrate; a second mask process forming a gate insulating film on the first mask pattern group and a semiconductor pattern on the gate insulating film; and a third mask process forming a third mask pattern group including a data

line, a source electrode connected to the data line and a drain electrode opposed to the source electrode having a second conductive layer group structure of at least double conductive layers, and a pixel electrode formed by an extension of overlapping the common electrode with the lowermost layer of the drain electrode having a single layer structure, on the gate insulating film provided with the semiconductor pattern at an area to be sealed by the sealant.

The method further includes forming an alignment film on the third mask pattern group.

In the method, the first mask process includes forming a lower pad electrode to be connected to at least one of the gate line, the data line and the common line from the first conductive layer group, the second mask process includes forming a contact hole passing through the gate insulating film to expose the lower pad electrode, and the third mask process includes forming an upper pad electrode to be connected, via said contact hole, to the lower pad electrode from the lowermost layer of the second conductive layer group.

In the method, the first mask process includes forming a data link provided such that the first conductive layer group is extended from the lower pad electrode to be overlapped with the data line, and the second mask process includes forming a second contact hole for connecting the data link with the data line.

In the method, the first mask process includes forming the first conductive layer group on the substrate; forming a different thickness of the first and second photo-resist patterns by a photolithography using one of a half tone mask and a diffractive exposure mask; forming the first mask pattern group including the common electrode having the second conductive layer group structure by an etching process using the first and second photo-resist patterns; removing the second photo-resist pattern and etching the exposed common electrode to remain the lowermost layers thereof; and removing the first photo-resist pattern.

In the method, the second mask process includes forming a gate insulating film, an amorphous silicon layer and an amorphous silicon layer doped with an impurity on the first mask pattern group; forming a different thickness of the first and second photo-resist patterns by a photolithography using one of a half tone mask and a diffractive exposure mask; and forming the contact holes by an etching process using the first and second photo-resist patterns; removing the second photo-resist pattern and forming the semiconductor pattern by an etching process using the first photo-resist pattern; and removing the first photo-resist pattern.

In the method, the third mask process includes forming the second conductive layer group on the gate insulating film provided with the semiconductor pattern; forming a different thickness of the first and second photo-resist patterns using one of a half tone mask and a diffractive exposure mask; forming a third mask pattern group having the upper pad electrode by patterning the second conductive layer group by an etching process using the first and second photo-resist patterns; removing an amorphous silicon layer doped with an impurity exposed between the source electrode and the drain electrode; and removing the second photo-resist pattern and etching the exposed upper pad electrode to remain only the lowermost layers thereof; and removing the first photo-resist pattern.

In the method, each of the first and second conductive layers includes a lowermost layer having a transparent conductive layer and an upper layer having at least one of a single layer formed of a metal material such as Mo, Ti, Cu, AlNd, Al, Cr, a Mo-alloy, a Cu-alloy or an Al-alloy, a double layer and a triple layer formed of Al/Cr, Al/Mo, Al(Nd)/Al, Al(Nd)/Cr,

Mo/Al(Nd)/Mo, Cu/Mo, Ti/Al(Nd)/Ti, Mo/Al, Mo/Ti/Al (Nd), Cu-alloy/Mo, Cu-alloy/Al, Cu-alloy/Mo-alloy, Cu-alloy/Al-alloy, Al/Mo-alloy, Mo-alloy/Al, Al-alloy/Mo-alloy, Mo-alloy/Al-alloy, and Mo/Al-alloy.

The method further includes if the lowermost layer of the second conductive layer group is over-etched in comparison to the upper layer thereof when the second conductive group is patterned, then etching each side of the upper layer exposed through the second photo-resist pattern to locate the edge of the upper layer at an inner side than that of the lowermost layer.

In the method, at least two layers of the semiconductor pattern, the source electrode, the drain electrode and the pixel electrode have step coverage taking a stepwise shape.

In the method, the second contact hole is formed in an area to be sealed by the sealant.

In the method, the second contact hole is formed under the alignment film.

In the method, the first conductive group has step coverage having a stepwise shape.

In the method, the second conductive group has step coverage having a stepwise shape.

BRIEF DESCRIPTION OF THE DRAWINGS

These and other advantages of the invention will be apparent from the following detailed description of the embodiments of the present invention with reference to the accompanying drawings.

In the drawings:

FIG. 1 is a schematic perspective view illustrating a structure of a related art liquid crystal display panel;

FIG. 2 is a plan view illustrating a structure of a thin film transistor substrate of fringe field switching type according to an embodiment of the present invention;

FIG. 3 is a sectional view of the thin film transistor substrate of horizontal electric field applying type taken along the III-III', IV-IV', V-V' and VI-VI' lines in FIG. 2;

FIG. 4 is a sectional view illustrating a data pad area of a liquid crystal display panel employing the thin film transistor substrate of horizontal electric field applying type illustrated in FIG. 3;

FIG. 5a and FIG. 5b are a plan view and a sectional view for explaining a first mask process in a method of fabricating the thin film transistor substrate of fringe field switching type according to the embodiment of the present invention, respectively;

FIG. 6a to FIG. 6e are sectional views for specifically explaining the first mask process;

FIG. 7a and FIG. 7b are a plan view and a sectional view for explaining a second mask process in a method of fabricating the thin film transistor substrate of fringe field switching type according to the embodiment of the present invention, respectively;

FIG. 8a to FIG. 8f are sectional views for specifically explaining the second mask process;

FIG. 9a and FIG. 9b are a plan view and a sectional view for explaining a third mask process in a method of fabricating the thin film transistor substrate of fringe field switching type according to the embodiment of the present invention, respectively; and

FIG. 10a to FIG. 10f are sectional views for specifically explaining the third mask process.

DETAILED DESCRIPTION OF THE ILLUSTRATED EMBODIMENT

Hereinafter, the illustrated embodiments of the present invention will be described in detail with reference to FIG. 3 to FIG. 10f.

FIG. 2 is a plan view illustrating a structure of a thin film transistor substrate of fringe field switching (FFS) type according to an embodiment of the present invention, and FIG. 3 is a sectional view of the thin film transistor substrate taken along the III-III', IV-IV', V-V' and VI-VI' lines in FIG. 2.

Referring to FIG. 2 and FIG. 3, the FFS-type thin film transistor substrate includes a gate line 102 and a data line 104 provided on a lower substrate 142 crossing each other with a gate insulating film 144 therebetween, a thin film transistor 106 connected to each crossing, a pixel electrode 118 provided at a pixel area defined by the crossing structure to be connected to the thin film transistor 106, a common electrode 122 provided, along with the pixel electrode 118, at the pixel area to form a fringe field, and a common line connected to the common electrode 122. Further, the FFS-type thin film transistor substrate includes a gate pad 126 connected to the gate line 102, a data pad 134 connected to the data line 104, and a common pad 140 connected to the common line 120.

The gate line 102 supplies a scanning signal from a gate driver (not illustrated) while the data line 104 supplies a video signal from a data driver (not illustrated). The gate line 102 and the data line 104 cross each other with the gate insulating film 152 therebetween to define the pixel area.

The gate line 102 is formed on the substrate 150 in a multiple-layer structure having at least double gate metal layers. For instance, as illustrated FIG. 3, the gate line 102 has a double-layer structure in which a first conductive layer 101 employing a transparent conductive layer and a second conductive layer 103 formed of an opaque metal are built. The data line 104 is formed on the gate insulating film 152 in a multiple-layer structure having at least double gate metal layers. For instance, as illustrated FIG. 3, the gate line 102 has a double-layer structure in which a third conductive layer 111 employing a transparent conductive layer and a fourth conductive layer 113 formed of an opaque metal are built. In this case, the first and third conductive layers 101 and 111 are formed of ITO, TO, IZO or ITZO, etc. while the second and fourth conductive layers 103 and 113 are formed of Cu, Mo, Al, a Cu-alloy, a Mo-alloy and a Al-alloy etc.

The thin film transistor TFT allows a video signal applied to the data line 104 to be charged into the pixel electrode 118 and be kept in response to a scanning signal applied to the gate line 102. The thin film transistor TFT includes a gate electrode included in the gate line 102, a source electrode 110 connected to the data line 104, a drain electrode 112 positioned in opposition to the source electrode 110 to be connected to the pixel electrode 118, an active layer 114 overlapping with the gate line 102 with the gate insulating film 152 therebetween to provide a channel between the source electrode 110 and the drain electrode 112, and an ohmic contact layer 116 formed on the active layer 114 other than the channel portion to make an ohmic contact with the source electrode 110 and the drain electrode 112. Herein, the source electrode 110 and the drain electrode 112, along with the above-mentioned data line 104, have a double-layer structure in which the third conductive layer and fourth conductive layers 111 and 113 are built on the gate insulating film 152 provided with a semiconductor pattern 115.

The common line 120 and the common electrode 122 supply a reference voltage for driving the liquid crystal, that is, a common voltage to each pixel.

The common line 120 includes an internal common line 120A provided in parallel to the gate line 102 at a display area, and an external common line 120B commonly connected to the internal common line 120A at a non-display area. The common line 120 is formed in a layer built structure of the first and second conductive layers 101 and 103 like the gate line 102.

The plate-shaped common electrode 122 is provided within the pixel area to be connected to the internal common line 120A. More specifically, the common electrode 122 is extended from the first conductive layer 101 of the internal common line 120A into each pixel area and formed into a plate shape. In other words, the common electrode 122 is formed of a transparent conductive layer being integral to the first conductive layer 101 of the common line 120.

The rib-shaped pixel electrode 118 is extended from the drain electrode 112 of the TFT and overlaps with the common electrode 122, with the gate insulating film 144, and a protective film 154 therebetween at each pixel area to form a fringe field. More specifically, the pixel electrode 118 is formed of the third conductive layer 111 extended from the drain electrode 112, that is, a transparent conductive layer. Further, the pixel electrode 118 includes a first horizontal rib 118A provided in parallel to the gate line 102, a second horizontal rib 118B provided in parallel to the common line 120A, and a plurality of vertical ribs 118C connected between the first and second horizontal ribs 118A and 118B. The pixel electrode 118 is connected to the drain electrode 112 exposed through a first contact hole 108. If a video signal is applied via the thin film transistor TFT to the rib-shaped pixel electrode 118, then the rib-shaped pixel electrode 118 forms a fringe field along with the plate-shaped common electrode 122 supplied with the common voltage. Thus, liquid crystal molecules arranged in the horizontal direction between the thin film transistor array substrate and the color filter array substrate by such a fringe field are rotated due to a dielectric anisotropy. Transmittance of a light transmitting the pixel area is differentiated depending upon a rotation extent of the liquid crystal molecules, thereby implementing a gray level scale.

Further, the overlapping portion between the common electrode 122 and the pixel electrode 118 is provided with a storage capacitor for stably keeping a video signal applied to the pixel electrode 118.

The gate line 102 is connected, via the gate pad 124, to the gate driver (not illustrated). The gate pad 124 consists of a lower gate pad electrode 126 extended from the gate line 102, and an upper gate pad electrode 130 connected, via a first contact hole 128 passing through the gate insulating film 152, to the lower gate pad electrode 126.

The data line 104 is connected, via the data pad 132, to a data driver (not illustrated). The data pad 132 consists of a lower data pad electrode 134 connected to a data link 135, and an upper data pad electrode 138 connected, via a second contact hole 136 passing through the gate insulating film 152, to the lower data pad electrode 134.

The common line 120 receives a reference voltage from a common voltage source (not illustrated) via the common pad 140. The common pad 140 includes a lower common pad electrode 142 extended from the external common line 120B, and an upper common pad electrode 146 provided within a third contact hole 144 passing through the gate insulating film 152 to be connected to the lower common pad electrode 142.

In such a thin film transistor substrate according to the embodiment of the present invention, the data pad 132 has the same structure as the gate pad 124 and the common pad 140. More specifically, the lower gate pad electrode 126, the lower common pad electrode 142, the lower data pad electrode 134 and the data link 135 are formed on the substrate 150 in a double-layer structure in which the first conductive layer and second conductive layers 101 and 103 are built like the gate line 102. Also, the upper gate pad electrode 130, the upper common pad electrode 146, the upper data pad electrode 138 and the data line 104 are formed on the gate insulating film 152, and are formed of the third conductive layer 111 in which the fourth conductive layer 113 is removed, that is, a transparent conductive layer.

Accordingly, the data link 135 formed on the substrate 150 is connected, via a fourth contact hole 148 passing through the gate insulating film, to the data line 104. In this case, the data line 104 is exposed due to an absence of the protective film. In order to prevent the data line 104 from being exposed to the exterior thereof and oxidized, as illustrated FIG. 6, the fourth contact hole 148 is positioned within an area sealed by a sealant 200. Thus, the data line 104 positioned at the sealed area is protected by a lower alignment film 214 to be formed thereon.

Referring to FIG. 4, the thin film transistor substrate formed with a lower alignment film 214 and the color filter substrate 210 formed with an upper alignment film 212 are joined to each other by the sealant 200, and a cell gap between two substrates sealed by the sealant 200 is formed with a liquid crystal. The upper and lower alignment films 212 and 214 are formed with an organic insulating material at each picture display area of the two substrates. The sealant 200 is formed with being spaced in such a manner to be not in contact with the upper and lower alignment films 212 and 214 for the purpose of reinforcing an adhesive force. Thus, the data line 104, the source electrode 110, the drain electrode 112, the pixel electrode 118 provided at the thin film transistor substrate are positioned at an area sealed by the sealant 200, so that it may be sufficiently protected by the lower alignment film 214 formed thereon as well as by the liquid crystal formed in the sealed area.

The FFS-type thin film transistor substrate according to the first embodiment of the present invention having the above-mentioned structure is formed by the following three-round mask process.

FIG. 5a and FIG. 5b are a plan view and a sectional view for explaining a first mask process, respectively, in a method of fabricating the thin film transistor substrate of fringe field switching type according to the embodiment of the present invention, and FIG. 6a to FIG. 6e are sectional views for specifically explaining the first mask process.

A first mask pattern group including the gate line 102, the lower gate pad electrode 126, the common line 120, the plate-shaped common electrode 122, the lower common pad electrode 142, the data link 135 and the lower data pad electrode 134 is formed on the lower substrate 150 by the first mask process. Herein, the first mask pattern group other than the common electrode 122 has a multiple-layer structure having at least two conductive layers. But, for explanation convenience sake, there will be described only a double-layer structure having the first and second conductive layers 101 and 103 built. The plate-shaped common electrode 122 has a single-layer structure of the first conductive layer 101 that is a transparent conductive layer. The first mask pattern group having such multiple-layer structure and single-layer structure is formed by a single of mask process using a partial transmitting mask such as a diffractive exposure mask or a

half tone mask, etc. Hereinafter, a case where the half tone mask is used as a first mask will be described.

Referring to FIG. 6a, the first and second conductive layers **101** and **103** are disposed on the lower substrate **150** by a deposition technique such as the sputtering, etc. The first conductive layer **101** is formed of a transparent conductive material such as ITO, TO, IZO or ITZO, etc. On the other hand, the second conductive layer **103** employs a single layer formed of a metal material such as Mo, Ti, Cu, AlNd, Al, Cr, a Mo-alloy, a Cu-alloy or an Al-alloy, etc., or takes a layer built structure of at least double layers such as Al/Cr, Al/Mo, Al(Nd)/Al, Al(Nd)/Cr, Mo/Al(Nd)/Mo, Cu/Mo, Ti/Al(Nd)/Ti, Mo/Al, Mo/Ti/Al(Nd), Cu-alloy/Mo, Cu-alloy/Mo-alloy, Cu-alloy/Al-alloy, Al/Mo-alloy, Mo-alloy/Al, Al-alloy/Mo-alloy, Mo-alloy/Al-alloy, Mo/Al-alloy, etc.

Referring to FIG. 6b, a second photo-resist pattern **162** having step coverage is formed by the photolithography using a half tone mask. The half tone mask is comprised of a shielding part for shielding an ultraviolet ray, a half-tone transmitting part for partially transmitting the ultraviolet ray using a phase-shifting material, and a full transmitting part for fully transmitting the ultraviolet ray. The second photo-resist pattern **162** including a different thickness of first photo-resist patterns **162A** and **162B** and an aperture part is formed by the photolithography using a half tone mask. In this case, the relatively thick first photo-resist pattern **162A** is provided at a shielding area P1 of the first photo-resist overlapping with the shielding part of the half tone mask; the first photo-resist pattern **162B** thinner than the first photo-resist pattern **162A** is provided at a half tone exposure area P2 overlapping with the half-tone transmitting part; and the aperture part is provided at an full exposure area P3 overlapping with the full transmitting part.

Further, the exposed portions of the first and second conductive layers **101** and **103** are etched by an etching process using the first photo-resist pattern **162** as a mask, thereby providing the first mask pattern group including a double-layer structure of the gate line **102**, the lower gate pad electrode **126**, the common line **120**, the common electrode **122** and the lower common pad electrode **142**, the data link **135** and the lower data pad electrode **136**.

Referring to FIG. 6d, a thickness of the first photo-resist pattern **162A** is thinned while the first photo-resist pattern **162B** is removed by the ashing process using an oxygen (O_2) plasma. Further, the second conductive layer **103** on the common electrode **122** is removed by the etching process using the ashed first photo-resist pattern **162A** as a mask. In this case, each side of the patterned second conductive layer **103** is again etched along the ashed first photo-resist pattern **162A**, thereby allowing the first and second conductive layers **101** and **103** of the first mask pattern group to has a constant step coverage in a stepwise shape. Accordingly, when the side surfaces of the first and second conductive layers **101** and **103** have a high steep inclination, it becomes possible to prevent poor step coverage of the gate insulating film **152** that may be generated thereon.

Referring to FIG. 6e, the first photo-resist pattern **162A** left on the first mask pattern group in FIG. 6d is removed by the stripping process.

FIG. 7a and FIG. 7b are a plan view and a sectional view for explaining a second mask process in a method of fabricating the FFS-type thin film transistor substrate according to the embodiment of the present invention, respectively, and FIG. 8a to FIG. 8f are section views for specifically explaining the second mask process.

The gate insulating film **152** including the first to fourth contact holes **128**, **136**, **144** and **148** and the semiconductor

pattern **115** are formed on the lower substrate **150** provided with the first mask pattern group by the second mask process. The semiconductor pattern **115**, and the contact holes **128**, **136**, **144** and **148** of the gate insulating film **152** are defined by a single of mask process employing a diffractive exposure mask or a half tone mask. Hereinafter, a case where the half tone mask is used as a second mask will be described.

Referring to FIG. 8a, the gate insulating film **152**, an amorphous silicon layer **105** and an amorphous silicon layer **107** doped with an n^+ or p^+ impurity are sequentially disposed on the lower substrate **150** provided with the first mask pattern group by a deposition technique such as the PECVD, etc. Herein, the gate insulating film **152** is formed of an inorganic insulating material such as silicon oxide (SiO_x) or silicon nitride (SiN_x).

Referring to FIG. 8b, a second photo-resist pattern **168** having step coverage is formed by the photolithography using a half tone mask. The half tone mask is comprised of a shielding part for shielding an ultraviolet ray, a half-tone transmitting part for partially transmitting the ultraviolet ray using a phase-shifting material, and a full transmitting part for fully transmitting the ultraviolet ray. The second photo-resist pattern **168** including a different thickness of second photo-resist patterns **168A** and **168B** and an aperture part is formed by the photolithography using a half tone mask. In this case, the relatively thick second photo-resist pattern **168A** is provided at a shielding area P1 of the second photo-resist overlapping with the shielding part of the half tone mask; the second photo-resist pattern **168B** thinner than the second photo-resist pattern **168A** is provided at a half tone exposure area P2 overlapping with the half-tone transmitting part; and the aperture part is provided at an full exposure area P3 overlapping with the full transmitting part.

Referring to FIG. 8c, the first to fourth contact holes **128**, **136**, **144** and **148** passing through the gate insulating film **152** from the amorphous silicon layer **107** doped with an n^+ or p^+ impurity **107** are formed by the etching process using the second photo-resist pattern **168** as a mask. The first contact hole **128** exposes the lower gate pad electrode **126**, the second contact hole **136** exposes the lower data pad electrode **134**, the third contact hole **144** exposes the lower common pad electrode **142** and the fourth contact hole **148** exposes the data link **135**.

Referring to FIG. 8d, a thickness of the second photo-resist pattern **168A** is thinned while the second photo-resist pattern **168B** is removed by the ashing process using oxygen (O_2) plasma.

Referring to FIG. 8e, the amorphous silicon doped with an n^+ or p^+ impurity **107** and the amorphous silicon layer **105** are patterned by the etching process using the ashed second photo-resist pattern **168A** as a mask to thereby provide the semiconductor pattern **115** including the active layer **114** and the ohmic contact layer **116**.

Referring to FIG. 8f, the second photo-resist pattern **168A** left on the semiconductor pattern **115** in FIG. 8e is removed by the stripping process.

FIG. 9a and FIG. 9b are a plan view and a sectional view for explaining a third mask process in a method of fabricating the thin film transistor substrate of horizontal electric field applying type according to the embodiment of the present invention, respectively, and FIG. 10a to FIG. 10e are sectional views for specifically explaining the third mask process.

A third mask pattern group including the data line **104**, the source electrode **110**, the drain electrode **112**, the rib-shaped pixel electrode **118**, the upper gate pad electrode **130**, the upper data pad electrode **138** and the upper common pad electrode **146** is formed on the gate insulating film **152** pro-

vided with the semiconductor pattern **115** by the third mask process. Herein, the third mask pattern group A including the data line **104**, the source electrode **110** and the drain electrode **112** has a multiple-layer structure in which at least two conductive layers are built. But, for explanation convenience sake, there will be described only a double-layer structure having the third and fourth conductive layers **111** and **113** built. The third mask pattern group B including the pixel electrode **118**, the upper gate pad electrode **130**, the upper data pad electrode **138** and the upper common pad electrode **146** has a single-layer structure formed of the third conductive layer **111** of the third mask pattern group A. The third mask pattern group including the third mask pattern group A having such a double-layer structure and the third mask pattern group B having such a single-layer structure is formed by the third mask process using a diffractive exposure mask or a half tone mask. Hereinafter, a case where the half tone mask is used as a third mask will be described.

Referring to FIG. **10a**, the third and fourth conductive layers **111** and **113** are sequentially formed on the gate insulating film **152** provided with the semiconductor pattern **115** by a deposition technique such as the sputtering, etc. The third conductive layer **111** is formed of a transparent conductive material such as ITO, TO, IZO or ITZO, etc. The fourth conductive layer **113** employs a single layer formed of a metal material such as Mo, Ti, Cu, AlNd, Al, Cr, a Mo-alloy, a Cu-alloy or an Al-alloy, etc., or takes a layer built structure of at least double layers such as Al/Cr, Al/Mo, Al(Nd)/Al, Al(Nd)/Cr, Mo/Al(Nd)/Mo, Cu/Mo, Ti/Al(Nd)/Ti, Mo/Al, Mo/Ti/Al(Nd), Cu-alloy/Mo, Cu-alloy/Al, Cu-alloy/Mo-alloy, Cu-alloy/Al-alloy, Al/Mo-alloy, Mo-alloy/Al, Al-alloy/Mo-alloy, Mo-alloy/Al-alloy, Mo/Al-alloy, etc.

Referring to FIG. **10b**, a third photo-resist pattern **182** having step coverage is formed by the photolithography using a half tone mask. The half tone mask is comprised of a shielding part for shielding an ultraviolet ray, a half-tone transmitting part for partially transmitting the ultraviolet ray using a phase-shifting material, and a full transmitting part for fully transmitting the ultraviolet ray. The third photo-resist pattern **182** including a different thickness of third photo-resist patterns **182A** and **182B** and an aperture part is formed by the photolithography using a half tone mask. In this case, the relatively thick third photo-resist pattern **182A** is provided at a shielding area P1 of the third photo-resist overlapping with the shielding part of the half tone mask; the third photo-resist pattern **182B** thinner than the third photo-resist pattern **182A** is provided at a half tone exposure area P2 overlapping with the half-tone transmitting part; and the aperture part is provided at an full exposure area P3 overlapping with the full transmitting part.

Referring to FIG. **10c**, the third and fourth conductive layers **111** and **113** are patterned by the wet-etching process using the third photo-resist pattern **182** as a mask to thereby provide a double-layer structure of the data line **104**, the source electrode **110**, the drain electrode **112**, the pixel electrode **118**, the upper gate pad electrode **130**, the upper data pad electrode **138** and the upper common pad electrode **146**. The data line **104** is overlapped with the data link **135** and is connected, via the fourth contact hole **148**, to the data link **135**. In this case, since the fourth conductive layer **113** is etched and then the third conductive layer **111** is etched by a different etchant, the third conductive layer **111** positioned at a lower portion than the upper fourth conductive layer **113** is over-etched to cause an under-cut area.

Referring to FIG. **10d**, the ohmic contact layer **116** between the source electrode **110** and the drain electrode **112** is removed by the etching process using the source electrode

110 and the drain electrode **112** having the third photo-resist pattern **182A** as a mask, for example, the dry-etching process, to thereby expose the active layer **114**. Such a dry etching allows the edge of the separated ohmic contact layer **116** to have more protruded shape than that of the third conductive layer **111**.

Referring to FIG. **10e**, a thickness of the third photo-resist pattern **182A** is thinned while the third photo-resist pattern **182B** is removed by the ashing process. Such a removal of the third photo-resist pattern **182B** exposes the fourth conductive layer **113** of the pixel electrode **118**, the upper gate pad electrode **130**, the upper data pad electrode **138** and the upper common pad electrode **146**. Further, the edge of the ashed third photo-resist pattern **182A** is positioned at the inner side of the edge of the patterned fourth conductive layer **113**.

Referring to FIG. **10f**, the fourth conductive layers **113** of the pixel electrode **118**, the upper gate pad electrode **130**, the upper data pad electrode **138** and the upper common pad electrode **146** are etched by the etching process using the ashed third photo-resist pattern **182A** as a mask to thereby provide the pixel electrode **118**, the upper gate pad electrode **130**, the upper data pad electrode **138** and the upper common pad electrode **146** that have a single-layer structure of the third conductive layer **111**. In this case, each side of the fourth conductive layer **113** exposed through the edge of the third photo-resist pattern **182A** is again etched. Thus, the third and fourth conductive layers **111** and **113** of the data line **104**, the source electrode **110** and the drain electrode **112** have a constant step coverage taking a stepwise shape. Particularly, the third and fourth conductive layers **111** and **113** of the source electrode **110** and drain electrode **112** exposing the channel of the thin film transistor TFT, that is, the active layer **114** and the ohmic contact layer **116** under them have a step coverage taking a stepwise shape. Accordingly, a channel width W and length L of the thin film transistor TFT are determined by the third conductive layer **111** of the source electrode **110** and the drain electrode **112**. Further, the third photo-resist pattern **182A** is removed by the stripping process.

As a result, the thin film transistor substrate of fringe field switching (FFS) type according to the embodiment of the present invention has an exposed structure of the data line **104**, the source electrode **110** and the pixel electrode **118** due to an absence of the protective film. However, all of them are positioned at an area sealed by the sealant, so that they can be sufficiently protected by the lower alignment film formed thereon as well as by the liquid crystal formed in the sealed area.

As described above, in the thin film transistor substrate of fringe field switching (FFS) type and a fabricating method thereof according to the present invention, a single-layer structure of common electrode is formed, along with a multiple-layer structure of other first mask pattern group, with the aid of the first half tone (or a diffractive exposure) mask.

Furthermore, in the thin film transistor substrate of fringe field switching (FFS) type and the fabricating method thereof according to the present invention, the semiconductor pattern and the contact hole are formed with the aid of the second half tone (or a diffractive exposure) mask.

Moreover, in the thin film transistor substrate of fringe field switching (FFS) type and the fabricating method thereof according to the present invention, a single-layer structure of pixel electrode and upper pad electrodes are formed, along with a multiple-layer structure of other third mask pattern group, with the aid of the third half tone (or a diffractive exposure) mask without the protective film.

Accordingly, the entire process can be simplified by the three-round mask process, so that it becomes possible to reduce the material cost and the equipment investment cost, as well as to improve the productivity.

Furthermore, according to the present invention, the data line, the source electrode, the drain electrode and the pixel electrode exposed due to an absence of the protective film in the tin film transistor substrate to be sufficiently protected by the lower alignment film formed thereon or by the liquid crystal formed in the area sealed by the sealant. Also, it permits all the pads of the thin film transistor substrate to have the same structure, and permits the data link connected to the data pad to be connected, via the contact hole, to the data line within an area sealed by the sealant. Thus, it becomes possible to prevent an illumination problem, etc. caused by an absence of the protective film.

Although the present invention has been explained by the embodiments illustrated in the drawings described above, it should be understood to the ordinary skilled person in the art that the invention is not limited to the embodiments, but rather that various changes or modifications thereof are possible without departing from the spirit of the invention. Accordingly, the scope of the invention shall be determined only by the appended claims and their equivalents.

What is claimed is:

1. A method of fabricating a liquid crystal display device, comprising:

a first mask process forming a first mask pattern group including a gate line, a gate electrode connected to the gate line and a common line parallel to the gate line having at least first double conductive layers, the first double conductive layers having a first conductive layer made of transparent conductive material and a second conductive layer thereon made of opaque metal material, and a common electrode formed by an extension of the first conductive layer of the common line on a substrate;

a second mask process forming a gate insulating film on the first mask pattern group and a semiconductor pattern on the gate insulating film; and

a third mask process forming a third mask pattern group including a data line, a source electrode connected to the data line and a drain electrode opposed to the source electrode having at least second double conductive layers, the second double conductive layers having a third conductive layer made of transparent material and a fourth conductive layer thereon made of opaque metal, and a pixel electrode formed by an extension of the third conductive layer of the drain electrode and overlapped with the common electrode, on the gate insulating film, wherein the common electrode and the pixel electrode are formed at pixel area defined by the gate line and the data line; and

wherein the common electrode is formed at the whole region the pixel area, and the pixel electrode is partially formed with a plurality of ribs at the pixel area,

wherein the first mask process includes:

forming the first double conductive layers on the substrate; forming a first photo-resist pattern having step coverage by a photolithography using one of a half tone mask and a diffraction exposure mask;

forming the first mask pattern group including the gate line, the gate electrode, the common line, and a lower pad electrode having the first double conductive layers by an etching process using the first photo-resist pattern;

partially removing the first photo-resist pattern to expose the second conductive layer of the first double conduc-

tive layers and etching the exposed second conductive layer using the remaining first photo-resist pattern to expose the first conductive layer of the first double conductive layers such that the common electrode is formed from the first conductive layer; and

removing the remaining first photo-resist pattern, wherein the third mask process includes:

forming the second double conductive layers on the gate insulating film provided with the semiconductor pattern; forming a third photo-resist pattern having step coverage using one of a half tone mask and a diffractive exposure mask;

patternning the second double conductive layers by an etching process using the third photo-resist pattern to provide a third mask pattern group including the data line, the source electrode, and the drain electrode;

removing an amorphous silicon layer doped with an impurity exposed between the source electrode and drain electrode; and

partially removing the third photo-resist pattern to expose the fourth conductive layer of the second double conductive layers and etching the exposed third photo-resist pattern using the remaining third photo-resist pattern to expose the third conductive layer of the second double conductive layers such that the pixel electrode and the upper pad electrode are formed from the third conductive layer; and

removing the remaining third photo-resist pattern.

2. The method as claimed in claim 1, further comprising: forming an alignment film on the third mask pattern group.

3. The method as claimed in claim 2, wherein the first mask process includes forming a lower pad electrode to be connected to at least one of the gate line, the data line and the common line from the first double conductive layers,

the second mask process includes forming a first contact hole passing through the gate insulating film to expose the lower pad electrode, and

the third mask process includes forming an upper pad electrode to be connected, via the first contact hole, to the lower pad electrode from the third conductive layer of the second double conductive layers.

4. The method as claimed in claim 3, wherein the first mask process includes forming a data link provided such that the first double conductive layers are extended from the lower pad electrode to be overlapped with the data line, and

the second mask process includes forming a second contact hole for connecting the data link with the data line.

5. The method as claimed in claim 4, wherein the second contact hole is formed under the alignment film.

6. The method as claimed in claim 1, wherein the first mask process includes forming a lower pad electrode to be connected to at least one of the gate line, the data line and the common line from the first double conductive layers,

the second mask process includes forming a first contact hole passing through the gate insulating film to expose the lower pad electrode, and

the third mask process includes forming an upper pad electrode to be connected, via the first contact hole, to the lower pad electrode from the third conductive layer of the second double conductive layers.

7. The method as claimed in claim 6, wherein the first mask process includes forming a data link provided such that the first double conductive layers are extended from the lower pad electrode to be overlapped with the data line, and

the second mask process includes forming a second contact hole for connecting the data link with the data line.

15

8. The method as claimed in claim 7, wherein the second mask process includes:
- forming a gate insulating film, an amorphous silicon layer and an amorphous silicon layer doped with an impurity on the first mask pattern group;
 - forming a second photo-resist pattern having step coverage by a photolithography using one of a half tone mask and a diffraction exposure mask; and
 - forming the contact holes by an etching process using the second photo-resist pattern;
 - partially removing the second photo-resist pattern to expose the amorphous silicon layer doped with an impurity and forming the semiconductor pattern by an etching process using the remaining second photo-resist pattern;
 - removing the remaining second photo-resist pattern.
9. The method as claimed in claim 7, wherein the second contact hole is formed in an area to be sealed by a sealant.

16

10. The method as claimed in claim 1, wherein the transparent conductive material includes one of ITO, TO, IZO and IZTO, and the opaque metal material includes one of Mo, Ti, Cu, AlNd, Al, Cr, a Mo-alloy, a Cu-alloy or an Al-alloy, Al/Cr, Al/Mo, Al(Nd)/Al, Al(Nd)/Cr, Mo/Al(Nd)/Mo, Cu/Mo, Ti/Al(Nd)/Ti, Mo/Al, Mo/Ti/Al(Nd), Cu-alloy/Mo, Cu-alloy/Al, Cu-alloy/Mo-alloy, Cu-alloy/Al-alloy, Al/Mo-alloy, Mo-alloy/Al, Al-alloy/Mo-alloy, Mo-alloy/Al-alloy, and Mo/Al-alloy.
11. The method as claimed in claim 1, wherein at least two layers of the semiconductor pattern, the source electrode, the drain electrode and the pixel electrode have step coverage taking a stepwise shape.
12. The method as claimed in claim 1, wherein the first conductive group has step coverage having a stepwise shape.
13. The method as claimed in claim 1, wherein the second conductive group has step coverage having a stepwise shape.

* * * * *

专利名称(译)	使用三掩模工艺和双层电极制造液晶显示器件的方法		
公开(公告)号	US7733453	公开(公告)日	2010-06-08
申请号	US11/312715	申请日	2005-12-21
[标]申请(专利权)人(译)	AHN BYUNGÇ		
申请(专利权)人(译)	AHN BYUNGÇ		
当前申请(专利权)人(译)	LG DISPLAY CO. , LTD.		
[标]发明人	AHN BYUNG CHUL		
发明人	AHN, BYUNG CHUL		
IPC分类号	G02F1/13 G02F1/1343		
CPC分类号	G02F1/134309 G02F1/1362 G02F2001/13629 G02F1/134363		
审查员(译)	内尔姆斯, DAVID		
优先权	1020040118570 2004-12-31 KR		
其他公开文献	US20060146256A1		
外部链接	Espacenet USPTO		

摘要(译)

边缘场开关薄膜晶体管基板包括连接到栅极线的栅电极，连接到数据线的源电极，与像素电极相对的漏电极和限定源电极和漏电极之间的沟道的半导体层。公共电极从公共线延伸到像素区域中。像素电极从漏电极延伸到与公共电极重叠的像素区域与栅极绝缘膜。栅极线和公共线由具有双导电层的第一导电层组形成，并且公共电极由公共线的最下层的延伸形成。数据线，源电极和漏电极由具有双导电层的第二导电层组形成。

