



US007477222B2

(12) **United States Patent**
Koyama et al.

(10) **Patent No.:** **US 7,477,222 B2**
(45) **Date of Patent:** **Jan. 13, 2009**

(54) **REDUNDANCY SHIFT REGISTER CIRCUIT
FOR DRIVER CIRCUIT IN ACTIVE MATRIX
TYPE LIQUID CRYSTAL DISPLAY DEVICE**

(56) **References Cited**

U.S. PATENT DOCUMENTS

3,576,447 A 4/1971 McKenny

(75) Inventors: **Jun Koyama**, Kanagawa (JP); **Yuji
Kawasaki**, Kanagawa (JP)

(Continued)

FOREIGN PATENT DOCUMENTS

(73) Assignee: **Semiconductor Energy Laboratory
Co., Ltd.**, Kanagawa-Ken (JP)

EP 0 553 775 8/1993

(Continued)

OTHER PUBLICATIONS

(*) Notice: Subject to any disclaimer, the term of this
patent is extended or adjusted under 35
U.S.C. 154(b) by 459 days.

Inventors: Jun Koyama et al., Specification and Drawings for U.S.
Appl. No. 09/448,463, filed Nov. 24, 1999, 41 pages, "Redundancy
Shift Register Circuit for Driver Circuit in Active Matrix Type Liquid
Crystal Display Device".

(21) Appl. No.: **11/166,142**

(Continued)

(22) Filed: **Jun. 27, 2005**

(65) **Prior Publication Data**

US 2005/0259060 A1 Nov. 24, 2005

Primary Examiner—Vijay Shankar

(74) *Attorney, Agent, or Firm*—Nixon Peabody LLP; Jeffrey
L. Costellia

Related U.S. Application Data

(57) **ABSTRACT**

(60) Division of application No. 09/448,756, filed on Nov.
24, 1999, now Pat. No. 6,943,764, which is a division
of application No. 08/803,217, filed on Feb. 20, 1997,
now abandoned, and a continuation of application No.
08/427,096, filed on Apr. 21, 1995, now abandoned.

An active matrix display device comprises a substrate having
an insulating surface, a plurality of pixel electrodes arranged
in a matrix form over the substrate, and a plurality of switch-
ing elements operationally connected to the pixel electrodes.
Each of the switching elements further comprise a thin film
transistor. The display device further includes a display
medium comprising an emissive material that is capable of
electrically changing luminous strength disposed at each of
the pixel electrodes, and a driver circuit that includes a plu-
rality of thin film transistors for driving the plurality of
switching elements. Each of the plurality of thin film transis-
tors comprise a crystallized semiconductor layer, a gate insu-
lating film adjacent to the crystallized semiconductor layer
and a gate electrode adjacent to the gate insulating film.

(30) **Foreign Application Priority Data**

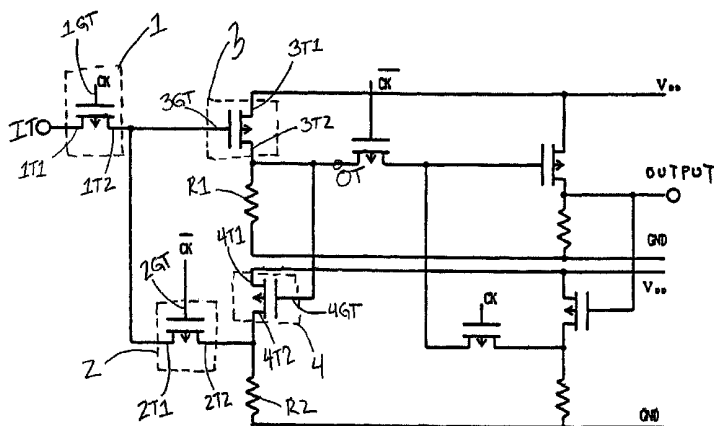
Apr. 22, 1994 (JP) 6-107574

(51) **Int. Cl.**
G09G 3/36 (2006.01)

(52) **U.S. Cl.** **345/92**; 345/98; 345/100;
345/204; 345/205

(58) **Field of Classification Search** 345/87–104,
345/204–215, 690–699; 315/169.1–169.4
See application file for complete search history.

30 Claims, 13 Drawing Sheets



U.S. PATENT DOCUMENTS

3,806,778 A	4/1974	Shimakura et al.	5,170,155 A	12/1992	Plus et al.
3,820,108 A	6/1974	Luce	5,170,244 A	12/1992	Dohjo et al.
3,885,196 A	5/1975	Fischer	5,173,792 A	12/1992	Matsueda
3,935,083 A	1/1976	Tomozawa et al.	5,193,018 A	3/1993	Wu
3,988,214 A	10/1976	Tsunemitsu	5,218,464 A	6/1993	Hiroki et al.
4,042,854 A	8/1977	Luo et al.	5,222,082 A	6/1993	Plus
4,114,070 A	9/1978	Asars	5,250,931 A	10/1993	Misawa et al.
4,232,327 A	11/1980	Hsu	5,260,818 A	11/1993	Wu
4,357,179 A	11/1982	Adams et al.	5,261,156 A	11/1993	Mase et al.
4,368,523 A	1/1983	Kawate	5,272,361 A	12/1993	Yamazaki
4,380,008 A	4/1983	Kawakami et al.	5,274,279 A	12/1993	Misawa et al.
4,409,724 A	10/1983	Tasch, Jr. et al.	5,275,872 A	1/1994	Chang
4,413,256 A	11/1983	Yasuda et al.	5,280,280 A	1/1994	Hotto
4,429,305 A	1/1984	Hosokawa et al.	5,281,840 A	1/1994	Sarma
4,468,855 A	9/1984	Sasaki	5,287,095 A	2/1994	Kitazima et al.
4,470,060 A	9/1984	Yamazaki	5,289,030 A	2/1994	Yamazaki et al.
4,525,436 A	6/1985	Yamazaki	5,292,675 A	3/1994	Codama
4,557,036 A	12/1985	Kyuragi et al.	5,294,555 A	3/1994	Mano et al.
4,597,160 A	7/1986	Ipri	5,294,811 A	3/1994	Aoyama et al.
4,605,972 A	8/1986	Hatanaka	5,302,966 A	4/1994	Stewart
4,641,156 A	2/1987	Ohta et al.	5,308,998 A	5/1994	Yamazaki et al.
4,646,426 A	3/1987	Sasaki	5,323,042 A	6/1994	Matsumoto
4,693,770 A	9/1987	Hatada	5,348,903 A	9/1994	Pfiester et al.
4,709,993 A	12/1987	Matsuyama et al.	5,349,226 A	9/1994	Kawaguchi et al.
4,716,403 A	12/1987	Morozumi	5,349,366 A	9/1994	Yamazaki et al.
4,727,044 A	2/1988	Yamazaki	5,365,080 A	11/1994	Yamazaki et al.
4,728,617 A	3/1988	Woo et al.	5,396,084 A	3/1995	Matsumoto
4,746,628 A	5/1988	Takafuji et al.	5,399,231 A	3/1995	McCarthy
4,757,028 A	7/1988	Kondoh et al.	5,402,041 A	3/1995	Kishino et al.
4,762,806 A	8/1988	Suzuki et al.	5,404,175 A	4/1995	Nagae et al.
4,762,807 A	8/1988	Yamazaki	5,412,240 A	5/1995	Inoue et al.
4,769,713 A	9/1988	Yasui	5,414,276 A	5/1995	McCarthy
4,772,927 A	9/1988	Saito et al.	5,414,442 A	5/1995	Yamazaki et al.
4,775,641 A	10/1988	Duffy et al.	5,416,043 A	5/1995	Burgener et al.
4,783,143 A	11/1988	Eicher et al.	5,418,636 A	5/1995	Kawasaki
4,804,953 A	2/1989	Castleberry	5,424,752 A	6/1995	Yamazaki et al.
4,808,991 A	2/1989	Tachiuchi et al.	5,426,526 A	6/1995	Yamamoto et al.
4,816,893 A	3/1989	Mayer et al.	5,430,320 A	7/1995	Lee
4,818,077 A	4/1989	Ohwada et al.	5,453,858 A	9/1995	Yamazaki
4,836,654 A	6/1989	Fujimura et al.	5,459,090 A	10/1995	Yamazaki et al.
4,838,654 A	6/1989	Hamaguchi et al.	5,465,053 A	11/1995	Edwards
4,851,827 A	7/1989	Nicholas	5,468,987 A	11/1995	Yamazaki et al.
4,884,079 A	11/1989	Inoue et al.	5,474,945 A	12/1995	Yamazaki et al.
4,890,308 A	12/1989	Imai	5,485,019 A	1/1996	Yamazaki et al.
4,905,066 A	2/1990	Dohjo et al.	5,492,843 A	2/1996	Adachi et al.
4,916,090 A	4/1990	Motai et al.	5,495,121 A	2/1996	Yamazaki et al.
4,929,058 A	5/1990	Numao	5,508,209 A	4/1996	Zhang et al.
4,930,874 A	6/1990	Mitsumune et al.	5,514,879 A	5/1996	Yamazaki
4,931,787 A	6/1990	Shannon	5,517,543 A	5/1996	Schleupen et al.
4,938,565 A	7/1990	Ichikawa	5,521,107 A	5/1996	Yamazaki et al.
4,942,441 A	7/1990	Konishi et al.	5,525,822 A	6/1996	Vinal
4,959,700 A	9/1990	Yamazaki	5,530,266 A	6/1996	Yonehara et al.
4,960,719 A	10/1990	Tanaka et al.	5,545,571 A	8/1996	Yamazaki et al.
4,963,860 A	10/1990	Stewart	5,566,009 A	10/1996	Yamazaki et al.
4,994,877 A	2/1991	Ino et al.	5,583,369 A	12/1996	Yamazaki et al.
5,038,368 A	8/1991	Lee	5,585,815 A	12/1996	Nakashima et al.
5,053,354 A	10/1991	Tanaka et al.	5,592,008 A	1/1997	Yamazaki et al.
5,063,378 A	11/1991	Roach	5,595,923 A	1/1997	Zhang et al.
5,081,523 A	1/1992	Frazier	5,631,664 A	5/1997	Adachi et al.
5,097,311 A	3/1992	Iwase et al.	5,670,792 A	9/1997	Utsugi et al.
5,100,810 A	3/1992	Yoshimi et al.	5,701,166 A	12/1997	Fedorovich et al.
5,111,060 A	5/1992	Asada	5,701,167 A	12/1997	Yamazaki
5,111,261 A	5/1992	Tanaka et al.	5,821,559 A	10/1998	Yamazaki et al.
5,113,134 A	5/1992	Plus et al.	5,849,043 A	12/1998	Zhang et al.
5,117,298 A	5/1992	Hirai	5,849,601 A	12/1998	Yamazaki
5,122,889 A	6/1992	Kaneko et al.	5,854,494 A	12/1998	Yamazaki et al.
5,132,677 A	7/1992	Nicholas	5,889,291 A	3/1999	Koyama et al.
5,151,689 A	9/1992	Kabuto et al.	5,938,839 A	8/1999	Zhang
5,162,901 A	11/1992	Shimada et al.	5,946,561 A	8/1999	Yamazaki et al.
5,165,073 A	11/1992	Shaklee et al.	6,017,783 A	1/2000	Yamazaki et al.
5,165,075 A	11/1992	Hiroki et al.	6,028,333 A	2/2000	Yamazaki et al.
			6,133,897 A	10/2000	Kouchi

6,555,843 B1 4/2003 Yamazaki et al.

FOREIGN PATENT DOCUMENTS

EP	0 554 063	8/1993
EP	0 650 197	4/1995
JP	53-144297	12/1978
JP	54-070762	6/1979
JP	55-011329	1/1980
JP	56-59291	5/1981
JP	57-99778	6/1982
JP	57-100467	6/1982
JP	05-823479	2/1983
JP	58-023479	2/1983
JP	58-32466	2/1983
JP	58-81972	5/1983
JP	58-115864	7/1983
JP	58-118154	7/1983
JP	58-124273	7/1983
JP	58-158967	9/1983
JP	58-206121	12/1983
JP	58-206163	12/1983
JP	59-33877	2/1984
JP	59-081621	5/1984
JP	59-159544	9/1984
JP	60-55665	3/1985
JP	60-98680	6/1985
JP	60-109282	6/1985
JP	60-113971	6/1985
JP	60-245172	12/1985
JP	61-004021	1/1986
JP	61-87371	5/1986
JP	61-187274	8/1986
JP	61-224360	10/1986
JP	61-263273	11/1986
JP	62-124769	6/1987
JP	62-269358	11/1987
JP	62-282464	12/1987
JP	63-096636	4/1988
JP	63-159826	7/1988
JP	63-178560	7/1988
JP	01-183853	7/1989

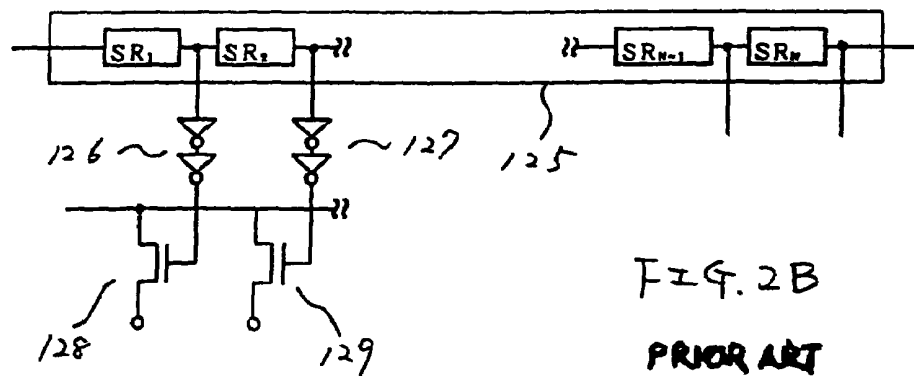
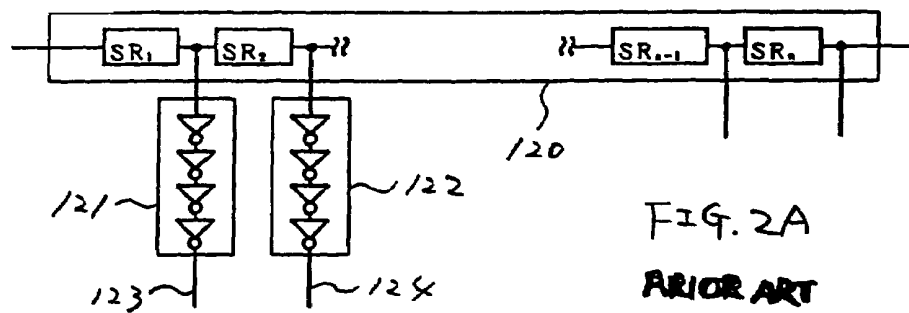
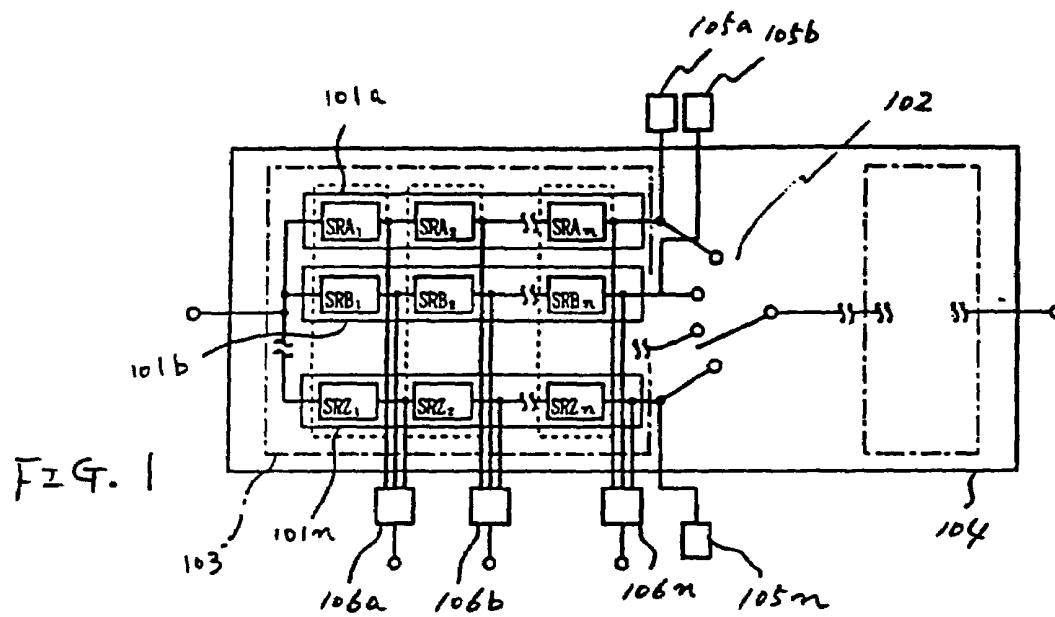
JP	01-194351	8/1989
JP	02-089030	3/1990
JP	02-103925	4/1990
JP	02-130912	5/1990
JP	02-207537	8/1990
JP	02-306664	12/1990
JP	03-154383	7/1991
JP	03-179391	8/1991
JP	04-088642	3/1992
JP	04-220627	8/1992
JP	04-242724	8/1992
JP	04-242725	8/1992
JP	04-267563	9/1992
JP	04-360580	12/1992
JP	05-107558	4/1993
JP	05-114724	5/1993
JP	05-121440	5/1993
JP	05-166837	7/1993
JP	05-249495	9/1993
JP	05-275448	10/1993
JP	06-013397	1/1994
JP	06-082818	3/1994
JP	06-102531	4/1994
JP	06-250212	9/1994
JP	06-250214	9/1994
JP	02-307273	12/1999
KR	92-704262	12/1992
KR	93-15063	7/1993
KR	94-3086	2/1994
KR	1995-0013793	11/1995
KR	1998-0010560	4/1998

OTHER PUBLICATIONS

Inventor: Shunpei Yamazaki, Specification and Drawings for U.S. Appl. No. 09/832,844, filed Apr. 12, 2001, 44 Pages, "Electro-Optical Device and Method for Manufacturing the Same".

Inventors: Jun Koyama et al., Specification and Drawings for U.S. Appl. No. 09/229,677, filed Jan. 13, 1999, 33 Pages, "Semiconductor Integrated Circuit".

"The IEEE Standard Dictionary of Electrical and Electronic Terms" Sixth Edition, (1996) p. 591.



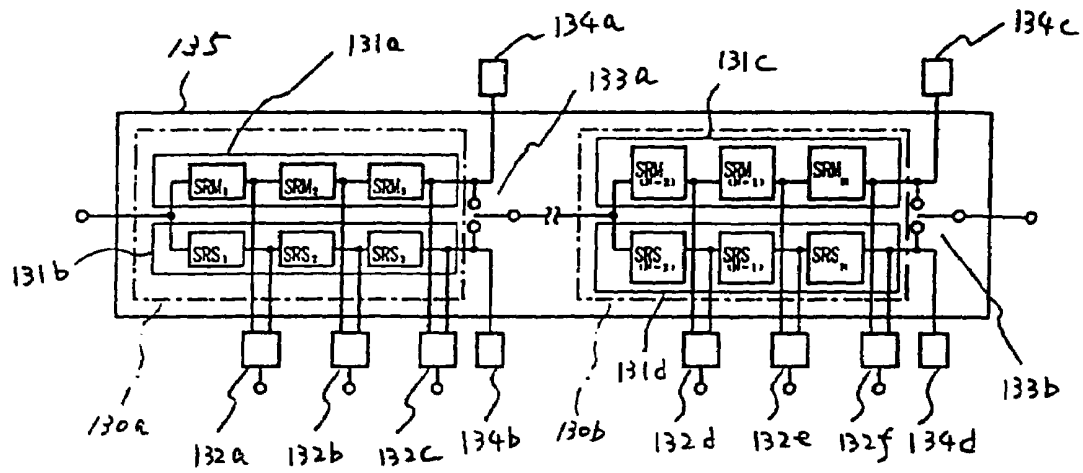


FIG. 3

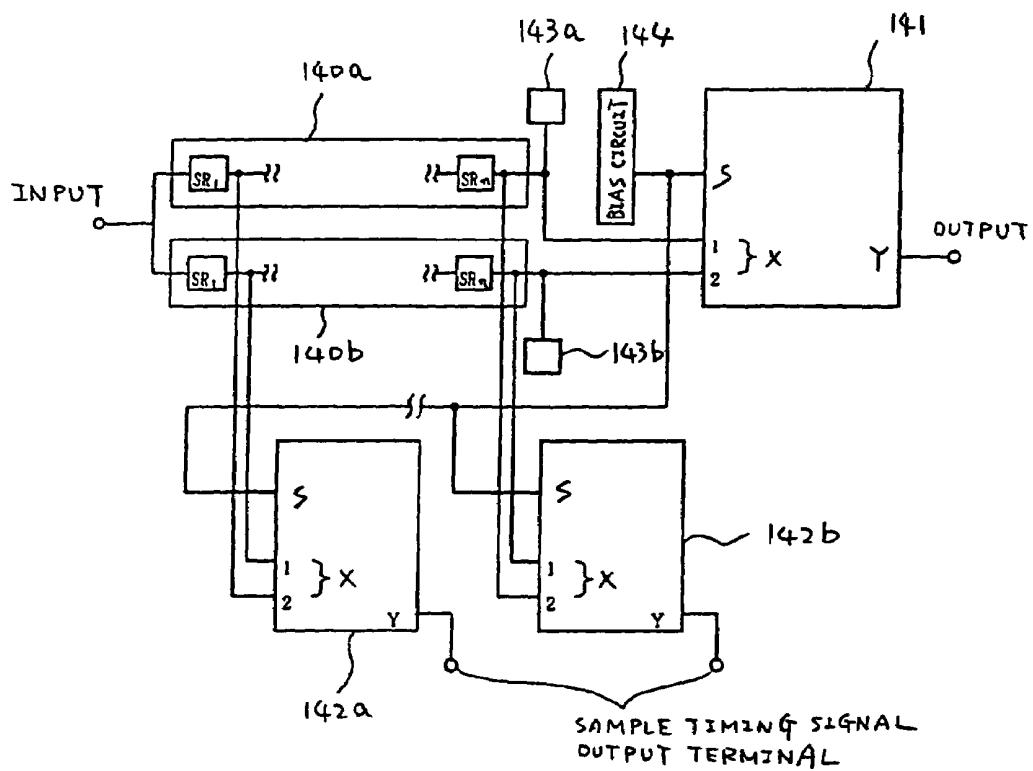


FIG. 4

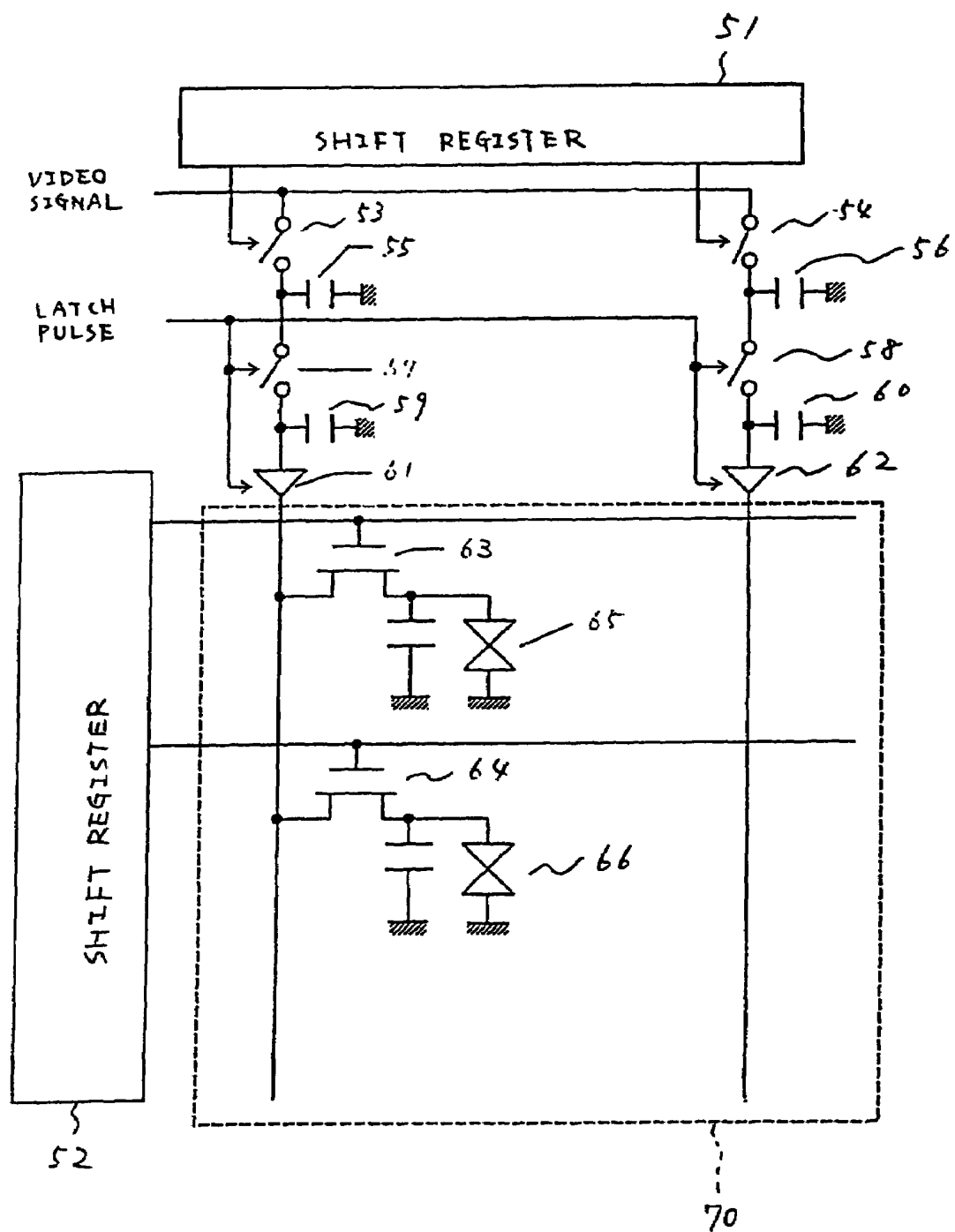


FIG. 5

PRIOR ART

Fig 6A

PRIOR ART

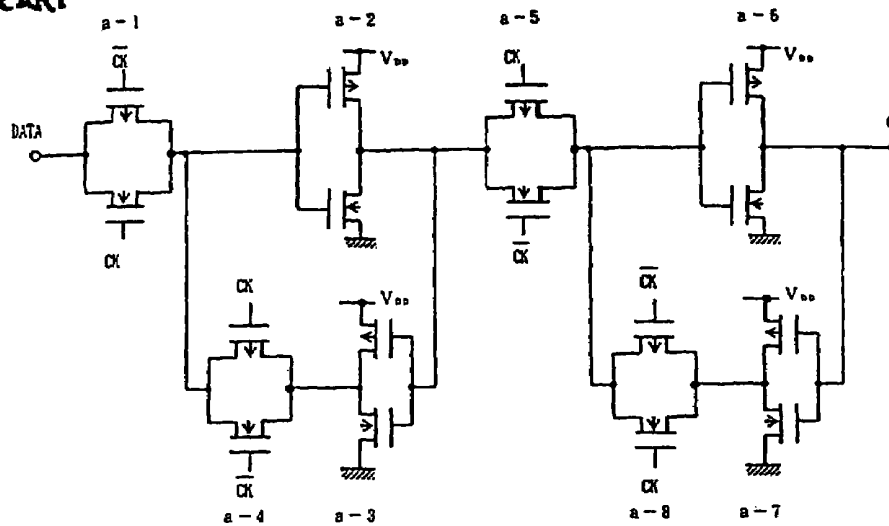


Fig 6B

PRIOR ART

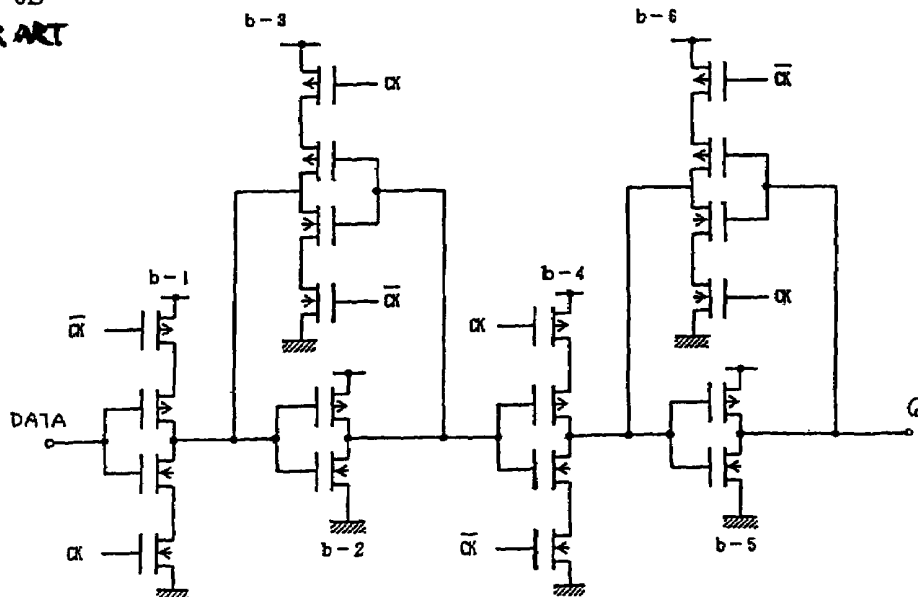


Fig 7A

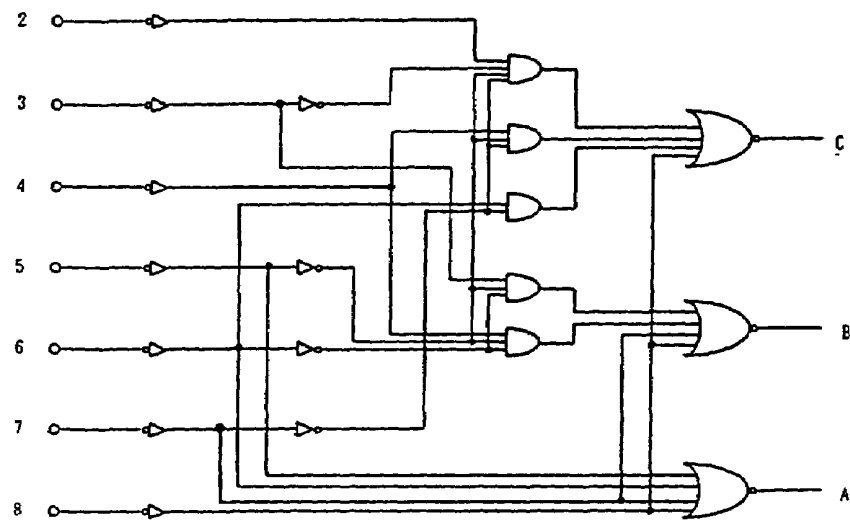


Fig 7B

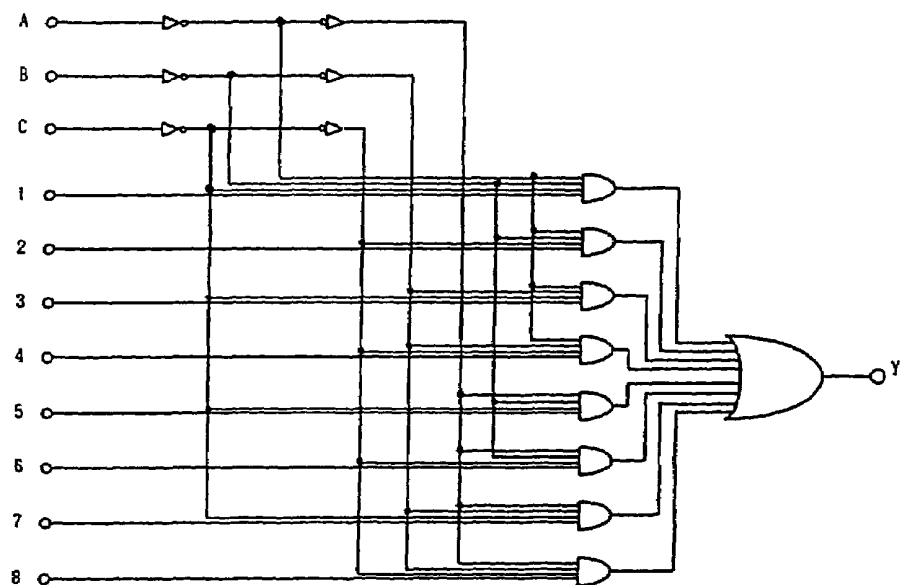


FIG. 8A

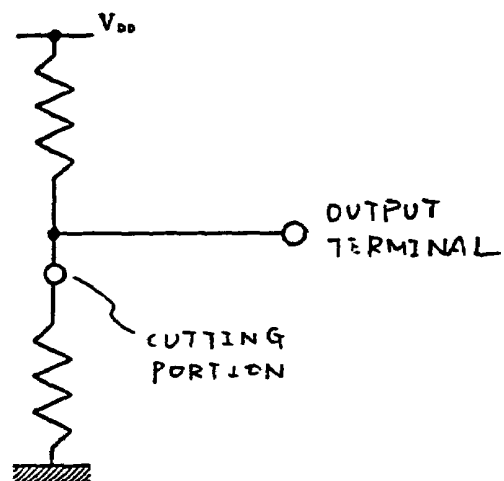


FIG. 8B

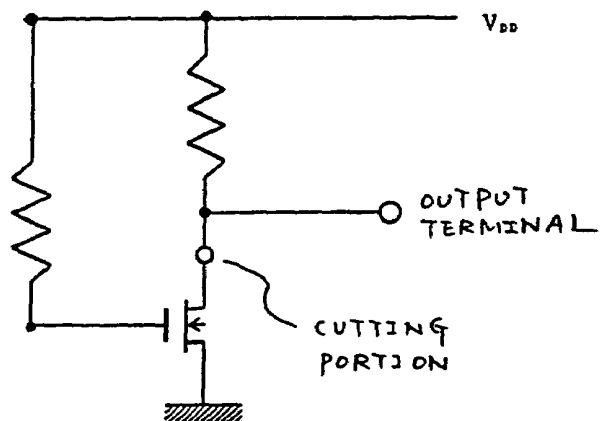
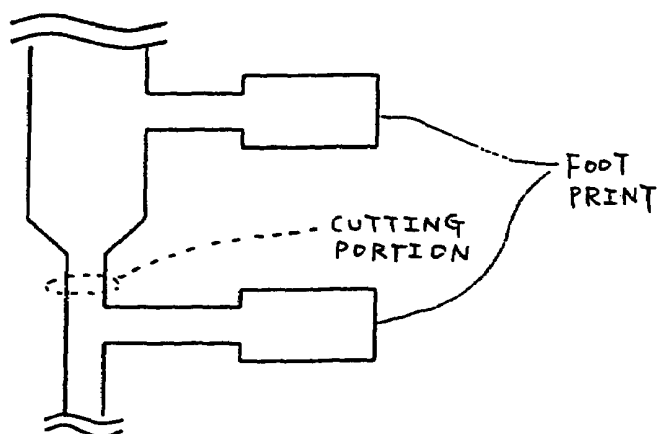
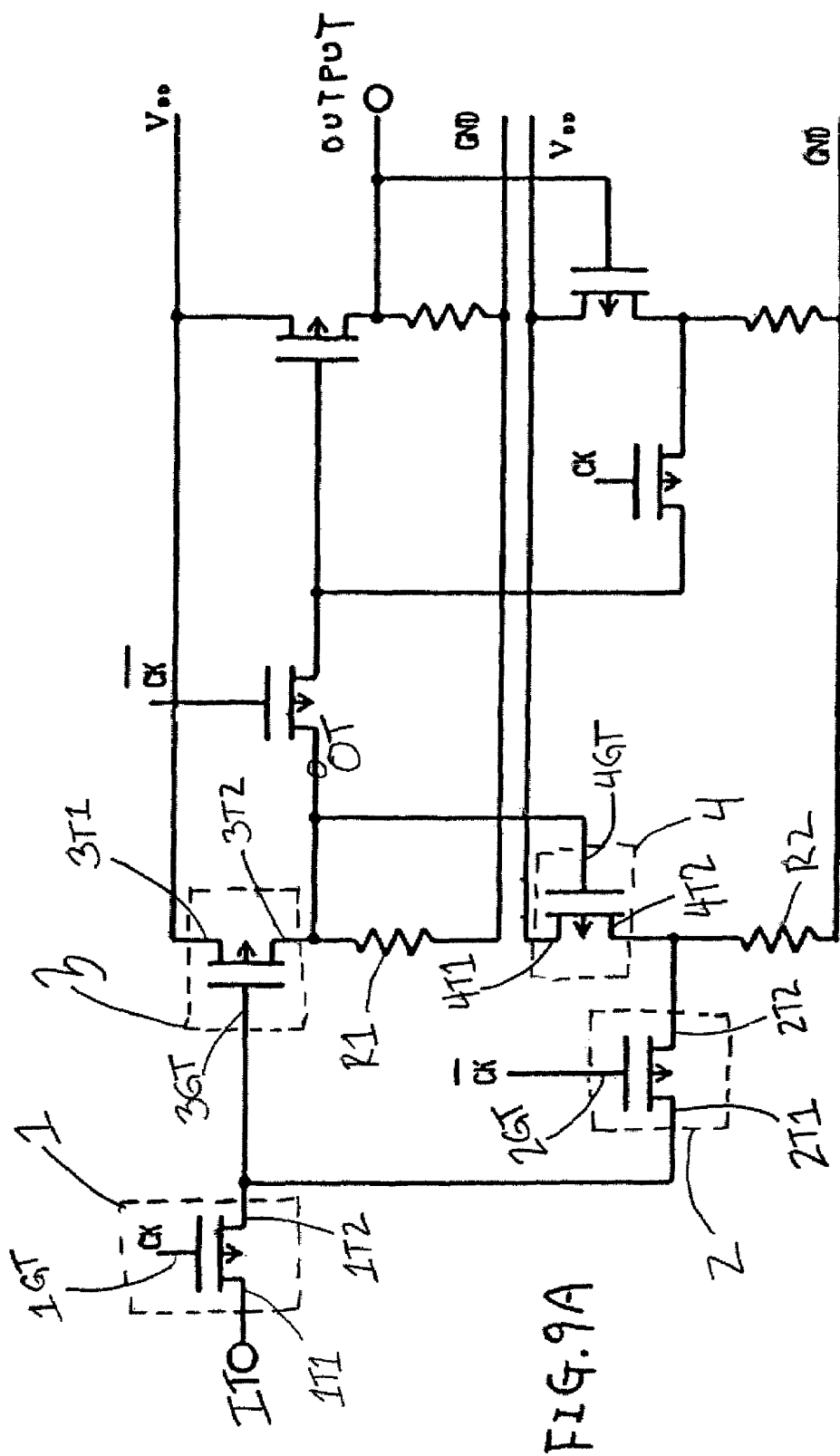
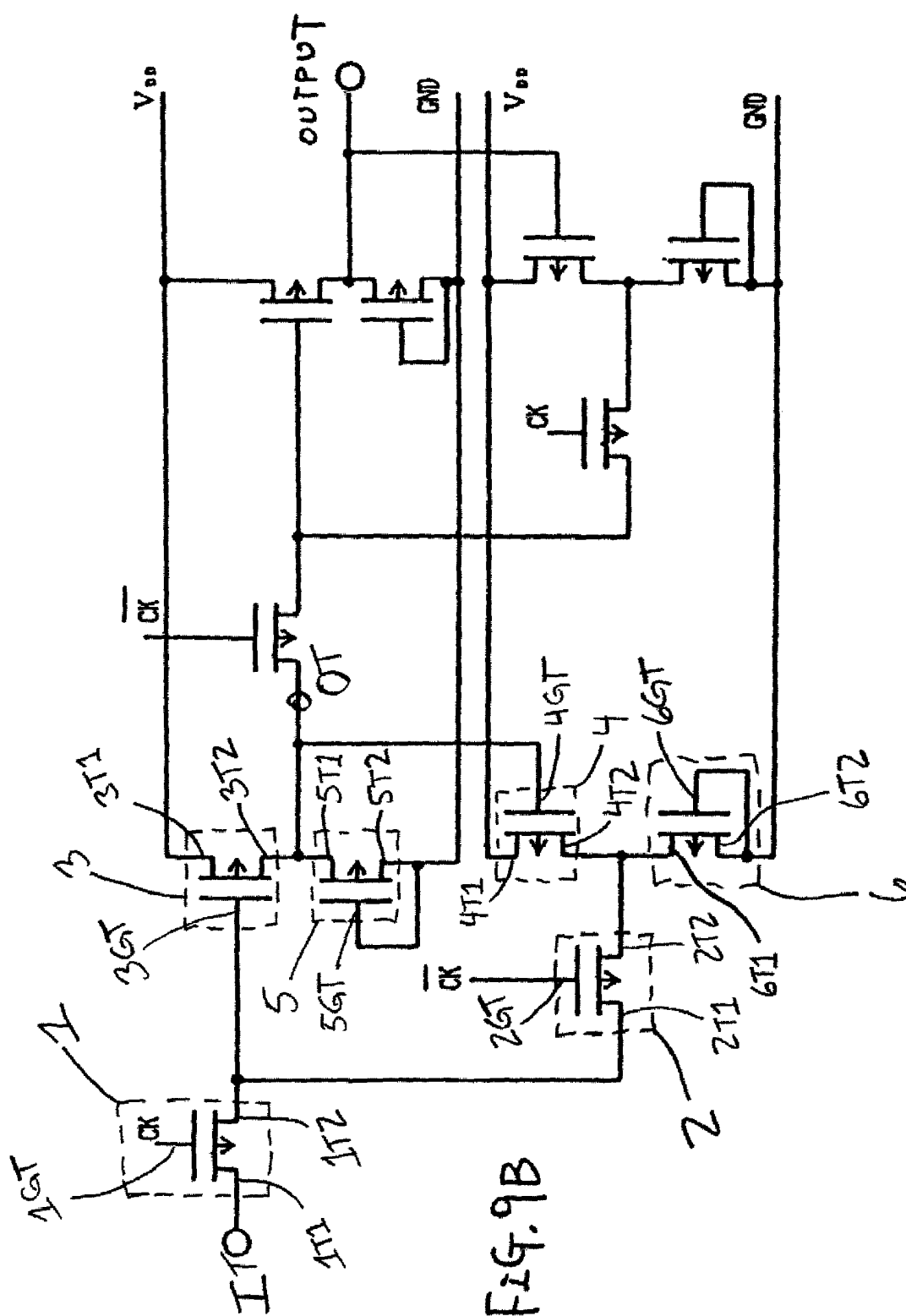
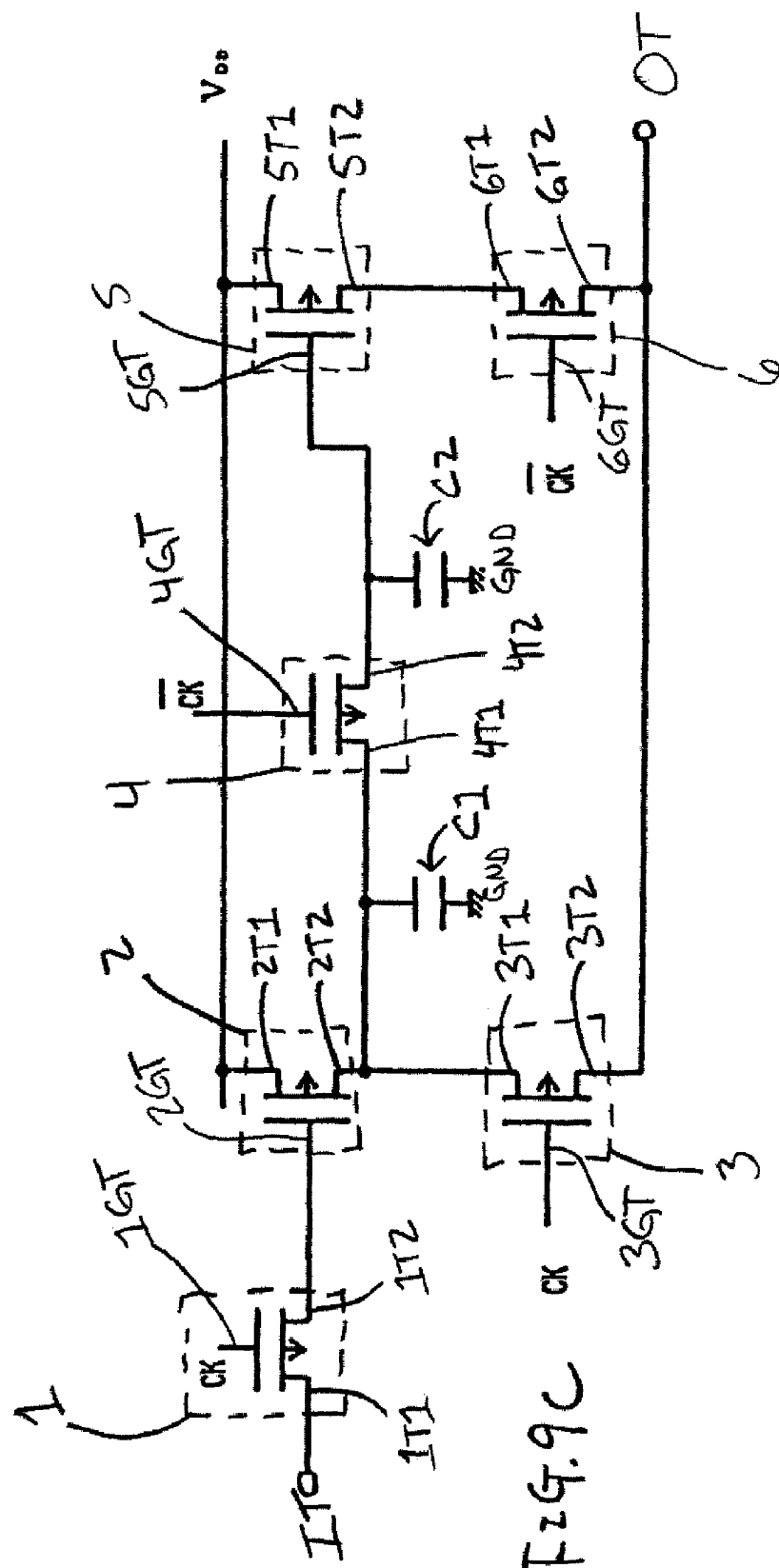


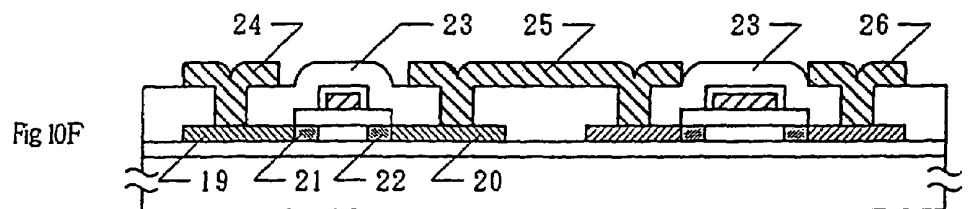
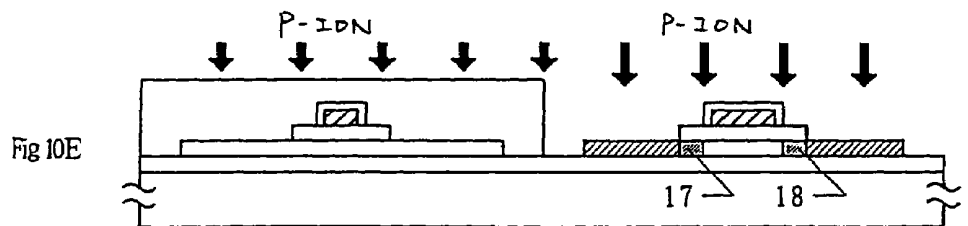
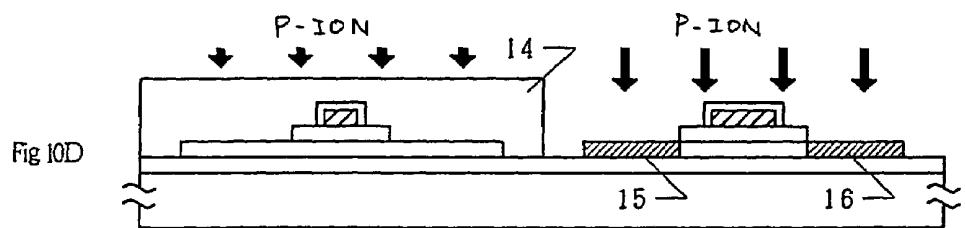
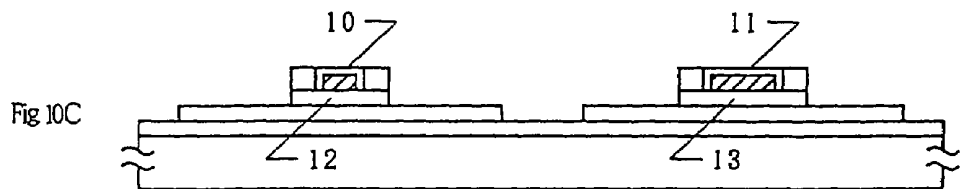
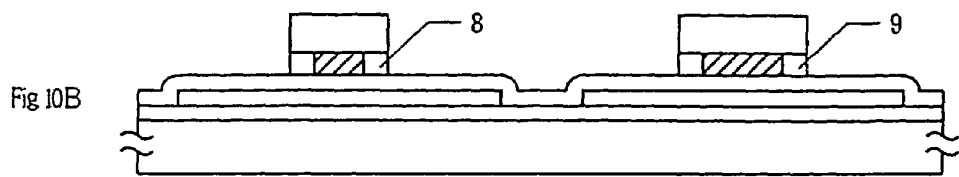
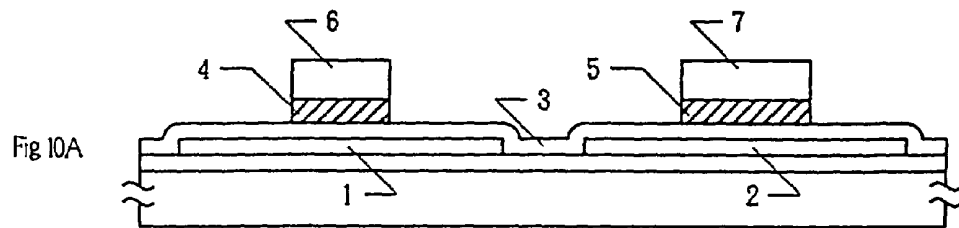
FIG. 8C

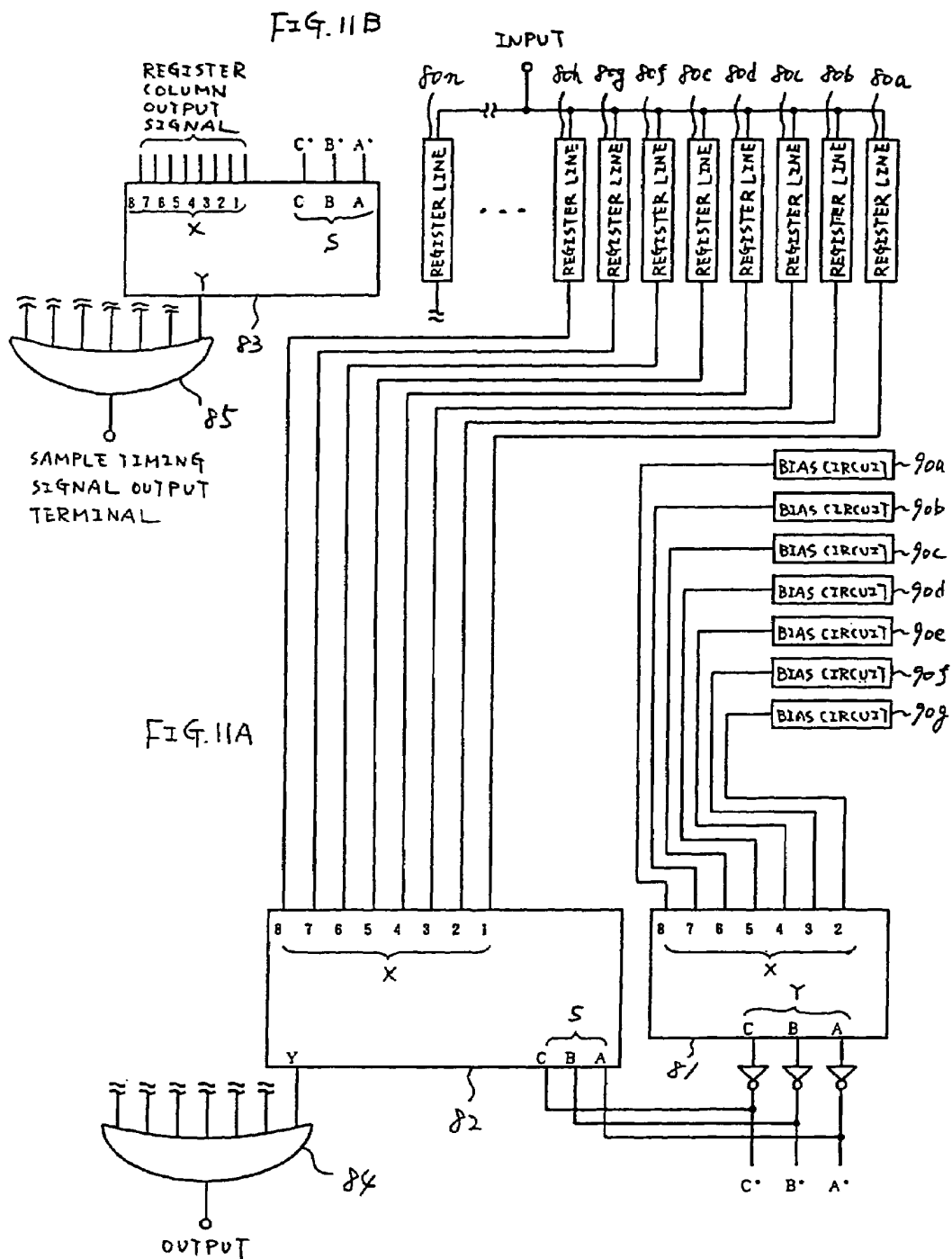












INPUT							OUTPUT		
2	3	4	5	6	7	8	A	B	C
H	H	H	H	H	H	H	H	H	H
L	H	H	H	H	H	H	H	H	L
*	L	H	H	H	H	H	H	L	H
*	*	L	H	H	H	H	H	L	L
*	*	*	L	H	H	H	L	H	H
*	*	*	*	L	H	H	L	H	L
*	*	*	*	*	L	H	L	L	H
*	*	*	*	*	*	L	L	L	L

*:don' t care

FIG. 12

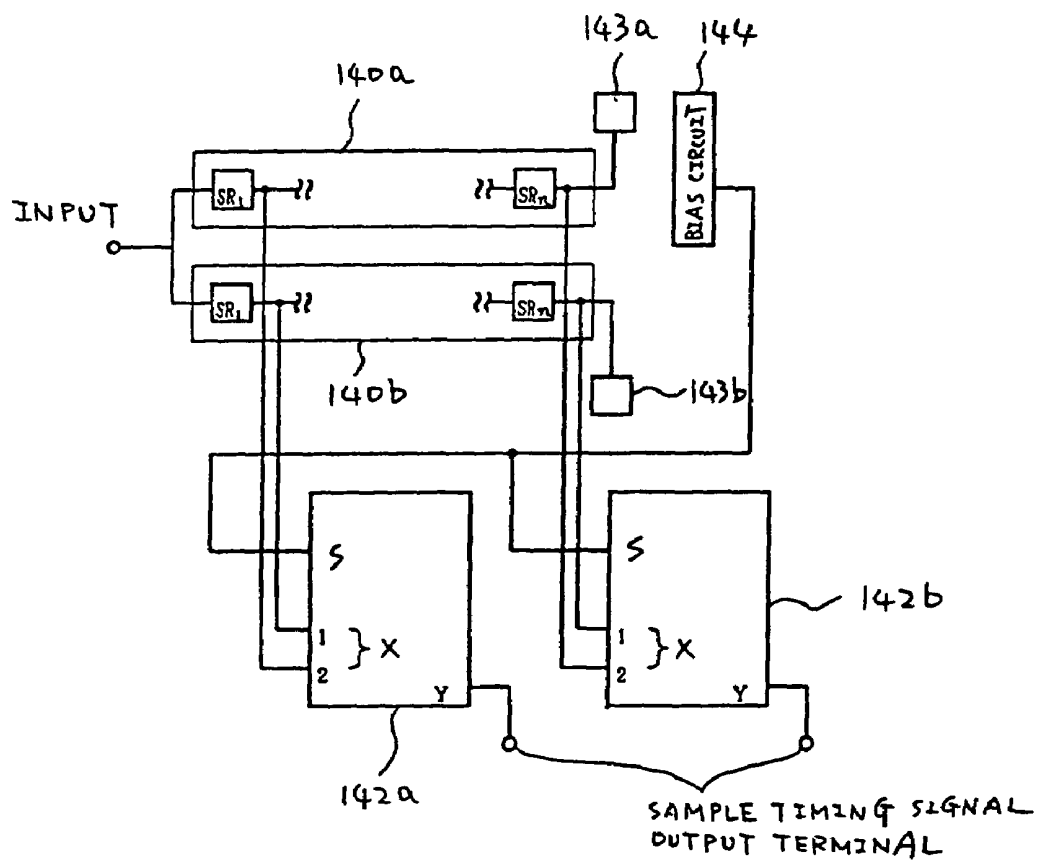


FIG. 13

REDUNDANCY SHIFT REGISTER CIRCUIT FOR DRIVER CIRCUIT IN ACTIVE MATRIX TYPE LIQUID CRYSTAL DISPLAY DEVICE

BACKGROUND OF THE INVENTION

The present invention relates to a shift register circuit constructed by thin film transistor (TFTs), in particular, a redundancy shift register circuit.

A shift register circuit in which TFTs are used is utilized in a driver circuit of an image sensor or a liquid crystal display (LCD) device, in particular, recently, in a driver circuit of an active matrix type display device.

In an active matrix type display device, each pixel is arranged in a cross section portion of an active matrix circuit and connected with a switching element, and image information is controlled by on/off of the switching element. As a display media of such display device, a liquid crystal, plasma, an object (state) capable of electrically changing an optical characteristic (reflectance, refractive index, transmissivity, emission (luminous) strength) or the like are used. As a switching element, in particular, a three terminal element, that is, a field effect transistor having a gate, a source and a drain is used.

In a matrix circuit, a signal line (a gate line) which is arranged in parallel to a line is connected with gate electrodes of transistors with respect to the line, and a signal line (a source line) which is arranged in parallel to a column is connected with source (or drain) electrodes of the transistors with respect to the column. A circuit for driving the gate line is referred to as a gate driver circuit, and a circuit for driving the source line is referred to as a source driver circuit.

Since the gate driver circuit generates a vertical line scan timing signal with respect to an active matrix type display device, a shift register includes serial-connected registers (in a single line) corresponding to the number of gate lines with a vertical direction. As a result, switching of thin film transistors (TFTs) in an active matrix type display device is performed by the gate driver circuit.

Since the source driver circuit generates a horizontal line image signal of image data to be displayed on an active matrix type display device, a shift register includes serial-connected registers (in a single line) corresponding to the number of source lines with a horizontal direction. Also, by a latch pulse synchronous with a horizontal scan signal, an analog switch is turned on or off. As a result, a current is supplied from the source driver circuit to TFTs in an active matrix type display device, to control alignment of a liquid crystal cell.

Referring to FIG. 5, a common active matrix type display device will be described.

A horizontal line scan timing signal is generated by a shift register 51. Analog switches 53 and 54 are turned on and then a video signal is stored in analog memories 55 and 56 in response to the horizontal line scan timing signal. Image data corresponding to the video signal stored in the analog memories 55 and 56 is stored in analog memories 59 and 60 through analog switches 57 and 58 turned on by timing of a latch pulse. The image data is supplied from the analog buffers 59 and 60 to source lines of TFTs 63 and 64 through analog buffers 61 and 62 in an active matrix circuit 70 of an active matrix type liquid crystal display device in timing of the latch pulse.

On the other hand, a vertical line scan timing signal is generated by a shift register 52 and then supplied to gate lines of the TFTs 63 and 64 in the active matrix circuit 70 of the active matrix type liquid crystal display device. Therefore, the image data (voltage) supplied to the source lines is applied to

liquid crystals 65 and 66, to determine alignment of the liquid crystals 65 and 66 connected with drain lines of the TFTs 63 and 64. the active matrix type liquid crystal display device is operated by the above operation.

Generally, a shift register includes a circuit as shown in FIGS. 6A and 6B, in particular, a D-type flip-flop. FIG. 6A shows a D-type flip-flop constructed using analog switches, and FIG. 6B shows a D-type flip-flop constructed using clocked invertors. These operation will be described below.

In FIG. 6A, when an operation clock CK is a high level (H) and an input signal DATA is a high level (H), a complementary type transmission gate a-1 is turned on and then the input signal DATA is input to a complementary type inverter circuit a-2. Therefore, an output of the complementary type inverter circuit a-2 becomes a low level (L). In this state, complementary type transmission gates a-4 and a-5 are in a turn off state.

When the operation clock CK is changed to a low level (L) while the input signal DATA is a high level (H), the complementary transmission gate a-1 becomes a turn off state, the complementary type transmission gates a-4 and a-5 become a turn on state. Therefore, an output of the complementary inverter circuit a-2 is held to a low level (L).

Also, since the complementary type transmission gate a-5 becomes a turn on state, an output of an complementary type inverter circuit a-6 becomes a high level (H). In this state, a complementary type transmission gate a-8 becomes a turn off state.

When the operation clock CK is changed to a high level (H) again, the complementary transmission gate a-5 becomes a turn off state and the complementary type transmission gate a-8 becomes a turn on state, so that a previous signal level is held. Therefore, an output of the complementary type inverter circuit a-6 can be held to an input signal DATA having a high level (H) in synchronous with an operation clock CK.

As a result, a D-type flip-flop can be constructed using transmission gates. Also, when an input signal DATA is a low level (L), the above described operation is performed.

In FIG. 6B, when the operation clock CK is a high level (H) and the input signal DATA is a high level (H), an output of a complementary clocked inverter circuit b-1 becomes a low level (L) and then an output of the complementary inverter circuit b-2 becomes a high level (H). In this state, complementary clocked inverter circuits b-3 and b-4 are in a turn off state.

When the operation clock CK is changed to a low level (L) while the input signal DATA is a high level (H), the complementary clocked inverter circuits b-3 and b-4 are turned on, so that an output of the complementary type inverter circuit b-2 is held to a high level (H). An output of the complementary inverter circuit b-5 becomes a high level (H). In this state, the complementary clocked inverter circuit b-6 is a turn off state.

When the operation clock CK is changed to a high level again, the complementary type clocked inverter circuit becomes a turn on state. Therefore, an output of the complementary type inverter circuit can be held to an input signal DATA having a high level (H) in synchronous with an operation clock CK.

As a result, a D-type flip-flop is constructed by clocked invertors. Also, when an input signal DATA is a low level (L), the above described operation is performed.

In a shift register circuit used in gate and source driving circuits of a common active matrix type display device, as shown in FIGS. 2A and 2B, registers having the same number as the number of gate lines (or source lines) are connected in serial. In a gate driver circuit as shown in FIG. 2A, outputs of registers SR_i ($i=1$ to n) in a shift register circuit 120 are

connected to gate lines **123** and **124** through inverter type buffer circuits **121** and **122**. In a source driver circuit as shown in FIG. **2B**, outputs of registers SR_i ($i=1$ to N) in a shift register circuit **125** are connected to control terminals of sampling transmission gates **128** and **129** through inverter type buffer circuits **126** and **127**.

If at least one register has defect in the shift register circuit having serial-connected registers, image data and scan timing signals output from the defect register and later connected register are abnormal, an accuracy image cannot be obtained. This problem is due to a yield of a shift register.

SUMMARY OF THE INVENTION

The object of the present invention is to solve the above problems.

One exemplary embodiment of the present invention includes an active matrix display device having a substrate having an insulating surface, a pixel portion comprising a pixel having a switching TFT over the substrate and a display element over the substrate, electrically connected to the switching TFT, and a driver circuit comprising a shift register comprising an inverter circuit having an input terminal, a first TFT over the substrate, a second TFT over the substrate, a third TFT over the substrate, a fourth TFT over the substrate, and an output terminal, wherein a first terminal of the first TFT is electrically connected to the input terminal, wherein a second terminal of the first TFT is electrically connected to a first terminal of the second TFT, and to a gate terminal of the third TFT, wherein a first terminal of the third TFT is electrically connected to a first power source, wherein a second terminal of the third TFT is electrically connected to a second power source, via a first resistance element, wherein a first terminal of the fourth TFT is electrically connected to the first power source, wherein a second terminal of the fourth TFT is electrically connected to the second power source, via a second resistance element, wherein a second terminal of the second TFT is electrically connected to the second terminal of the fourth TFT, wherein the output terminal is electrically connected to the second terminal of the third TFT, and to a gate terminal of the fourth TFT, wherein a clock signal is inputted to a gate terminal of the first TFT, wherein an inverted clock signal is inputted to a gate terminal of the second TFT, and wherein each of the switching TFT, the first TFT, the second TFT, the third TFT and the fourth TFT comprises an active layer having a channel forming region comprising an impurity element having a same conductivity type.

On exemplary embodiment of the present invention includes an active matrix display device having a substrate having an insulating surface, a pixel portion comprising a pixel having a switching TFT over the substrate and a display element over the substrate, electrically connected to the switching TFT, and a driver circuit comprising a shift register comprising an inverter circuit having an input terminal, a first TFT over the substrate, a second TFT over the substrate, a third TFT over the substrate, a fourth TFT over the substrate, a fifth TFT over the substrate, a sixth TFT over the substrate, and an output terminal, wherein a first terminal of the first TFT is electrically connected to the input terminal, wherein a second terminal of the first TFT is electrically connected to a first terminal of the second TFT, and to a gate terminal of the third TFT, wherein a first terminal of the third TFT is electrically connected to a first power source, wherein a second terminal of the third TFT is electrically connected to a second power source, and to a first terminal of the fifth TFT, wherein a second terminal of the fifth TFT is electrically connected to

a gate terminal of the fifth TFT, and to a second power source, wherein a first terminal of the fourth TFT is electrically connected to the first power source, wherein a second terminal of the fourth TFT is electrically connected to the second power source, and to a first terminal of the sixth TFT, wherein a second terminal of the sixth TFT is electrically connected to a gate terminal of the sixth TFT, and to the second power source, wherein a second terminal of the second TFT is electrically connected to the second terminal of the fourth TFT, wherein the output terminal is electrically connected to the second terminal of the third TFT, and to a gate terminal of the fourth TFT, wherein a clock signal is inputted to a gate terminal of the first TFT, wherein an inverted clock signal is inputted to a gate terminal of the second TFT, and wherein each of the switching TFT, the first TFT, the second TFT, the third TFT, the fourth TFT, the fifth TFT and the sixth TFT comprises an active layer having a channel forming region comprising an impurity element having a same conductivity type.

On exemplary embodiment of the present invention includes an active matrix display device having a substrate having an insulating surface, a pixel portion comprising a pixel having a switching TFT over the substrate and a display element over the substrate, electrically connected to the switching TFT, and a driver circuit comprising a shift register comprising an inverter circuit having an input terminal, a first TFT over the substrate, a second TFT over the substrate, a third TFT over the substrate, a fourth TFT over the substrate, a fifth TFT over the substrate, a sixth TFT over the substrate, and an output terminal, wherein a first terminal of the first TFT is electrically connected to the input terminal, wherein a gate terminal of the second TFT is electrically connected to a second terminal of the first TFT, wherein a first terminal of the second TFT is electrically connected to a first power source, wherein a first terminal of the fourth TFT is electrically connected to a second terminal of the second TFT, to a first terminal of the third TFT, and to a second power source via a first capacitor, wherein a first terminal of the fifth TFT is electrically connected to the first power source, wherein a gate terminal of the fifth TFT is electrically connected to a second terminal of the fourth TFT, and the second power source via a second capacitor, wherein a first terminal of the sixth TFT is electrically connected to a second terminal of the fifth TFT, wherein the output terminal is electrically connected to the second terminal of the sixth TFT, and to a second terminal of the third TFT, wherein a clock signal is inputted to a gate terminal of the first TFT, and to a gate terminal of the third TFT, wherein an inverted clock signal is inputted to a gate terminal of the fourth TFT, and to a gate terminal of the sixth TFT, and wherein each of the switching TFT, the first TFT, the second TFT, the third TFT, the fourth TFT, the fifth TFT and the sixth TFT comprises an active layer having a channel forming region comprising an impurity element having a same conductivity type.

According to the above embodiments, the active layer includes crystallized silicon, wherein at least one of the first, second, third, fourth, fifth, and sixth TFTs has at least one lightly doped region formed by ion doping using the gate electrode of the corresponding TFT as a mask.

According to the above embodiments, the display element includes an emissive material or a liquid crystal material.

BRIEF DESCRIPTION OF THE DRAWINGS

FIG. **1** shows a redundancy shift register circuit in a driving circuit of an active matrix type display device according to an embodiment of the present invention;

FIGS. 2A and 2B show a shift register circuit in a driving circuit of a common active matrix type display device, respectively;

FIG. 3 shows a shift register circuit of an embodiment;

FIG. 4 shows a shift register selecting switch of the embodiment;

FIG. 5 shows a schematic view of a common active matrix type display device;

FIGS. 6A and 6B show a common register, respectively.

FIGS. 7A and 7B show a priority encoder circuit and a multiplexer circuit, respectively.

FIGS. 8A to 8C show a bias circuit, respectively.

FIGS. 9A to 9C show a register constructed by p-channel transistors;

FIGS. 10A to 10F show a method for forming complementary inverter circuit;

FIGS. 11A and 11B show a shift register selecting circuit of the embodiment;

FIG. 12 shows a truth table of a priority encoder circuit; and

FIG. 13 shows a shift register selecting switch of another embodiment.

DETAILED DESCRIPTION OF THE PREFERRED EMBODIMENTS

As shown in FIG. 1, a shift register circuit **104** includes at least one register group **103** and a register selecting switch **102**. the register group **103** includes register lines **101a**, **101b**, . . . , and **101n** having a plurality of serial-connected registers **SR*Ai***, **SR*Bi***, . . . , and **SR*Zi*** (*i*=1 to *n*), respectively. The register line selecting switch **103** selects one of the register lines.

In this structure, one register line is used as a main register line, and the other register lines are used as a subregister line. When a plurality of register groups are arranged in a shift register circuit, the register groups are connected with each other in serial, to use as a shift register constructing gate and source driver circuits. Defect detection terminals **105a**, **105b**, . . . , **105n** are arranged with the register lines in the register group, respectively, so that whether or not each register line operates normally is detected. An output of a last register of each shift register line is connected with the register line selecting switch **103**.

The register line selecting switch **103** has at least one bias circuit (as described later). A voltage is always applied to the bias circuit, switching operation by the bias circuit is performed by providing one bias.

When one of the register lines is selected by the register line selecting switch **103**, register column selecting switches **106a**, **106b**, . . . , **106n** selects registers included in the selected one of the register lines, respectively. The number of register column selecting switches coincides with the number of registers included in each register line. Each register column selecting switch selects one of a plurality of input signals as an output signal. A signal for selecting the output signal is generated by using an output signal of the bias circuit.

When defect is detected by examining a main register line using a defect detection terminal, one of subregister lines is examined by another defect detection terminal. When defect is not detected, the register line selecting switch **102** selects the one of the subregister lines. Simultaneously, the register column selecting switches select the registers of the selected subregister lines.

As a result, redundancy is performed for register lines in a register group, so that a yield for a whole shift register circuit can be improved.

A thin film device (such as a complementary inverter circuit) used in the present invention will be described below.

A silicon oxide film having a thickness of 1000 to 3000 Å is formed as a base oxide film on a glass substrate (a low alkaline glass such as Corning 7059 or a quartz glass) by sputtering in an atmosphere containing oxygen. To improve productivity, A film to be deposited by decomposing a tetraethyl-ortho-silicate (TEOS) in plasma chemical vapor deposition (CVD) may be used.

An amorphous silicon film having a thickness of 300 to 5000 Å, preferably 500 to 1000 Å is deposited by plasma CVD and low pressure CVD (LPCVD) and then placed in a reducing atmosphere at 550 to 600° C. for 4 to 48 hours to crystallize it. After this process, crystallinity may be increased (improved) by laser irradiation. The crystallized silicon film is patterned to form island regions **1** and **2**. Further, a silicon oxide film **3** having a thickness of 700 to 1500 Å is formed on the island regions **1** and **2** by sputtering.

An aluminum (containing Si of 1 weight % or Sc (scandium) of 0.1 to 0.3 weight %) film having a thickness of 1000 Å to 3 μm is formed by electron beam evaporation or sputtering. A photoresist (for example, a product of Tokyo Ohka Co. Ltd. OFPR800/30 cp) is formed by spin coating. When an aluminum oxide film having a thickness of 100 to 1000 Å is formed on a surface thereof by anodization after formation of the photoresist, adhesion to the photoresist is high. Also, by suppressing a leak current from a photoresist, it is effective on formation of a porous anodic oxide in only side surface in a later anodization process. The photoresist and the aluminum film are patterned and etched to form gate electrodes **4** and **5** and mask films **6** and **7**. (FIG. 10A)

The formed substrate is anodized by supplying a current in an electrolytic solution, to form an anodic oxide having a thickness of 3000 to 6000 Å, for example, 5000 Å. The anodization is performed using an acid solution containing citric acid, nitric acid, phosphoric acid, chromic acid, sulfuric acid, oxalic acid or the like of 3 to 20% by applying a voltage of 10 to 30 V to a gate electrode at a constant current. In the embodiment, the anodization is performed in an oxalic acid solution (30° C.) at 10 V for 20 to 40 minutes. A thickness of an anodic oxide is adjusted by an anodization time. (FIG. 10B)

After that, the mask films are removed, and then a current is supplied to the gate electrodes in an electrolytic solution (ethylene glycol solution containing tartaric acid, boric acid, nitric acid of 3 to 10%) again. In order to obtain a superior oxide film, it is preferred that a temperature of the solution is about 10° C. and lower than a room temperature. As a result, barrier type anodic oxides **10** and **11** are formed in upper and side surfaces of the gate electrodes. Thicknesses of the anodic oxides **10** and **11** are proportional to an applied voltage. For example, when an applied voltage is 150 V, an anodic oxide having a thickness of 2000 Å is formed. Thicknesses of the anodic oxides **10** and **11** are determined by a necessary offset size. Although an anodic oxide having a thickness of 3000 Å or more is formed by applying 250 V or higher, since this influences TFT characteristics, it is desired that an anodic oxide having a thickness of 3000 Å or less is formed. In the embodiment, a voltage is increased until 80 to 150 V and selected by necessary thicknesses of the anodic oxides **10** and **11**.

In this state, although a barrier type anodic oxide is formed by a later process, the barrier type anodic oxides **10** and **11** are formed between the porous anodic oxides **8** and **9** and the gate electrodes **4** and **5** without forming barrier type anodic oxides outside porous anodic oxides.

An insulating film **3** is etched by dry etching or wet etching. A depth of etching is arbitrary. Etching may be performed until an active layer formed under the insulating film **3** is exposed. Etching may be stopped on halfway. However, it is desired to etch the insulating film **3** until an active layer is exposed, in mass productivity, yield and uniformity. In this state, insulating films **12** and **13** covered with the anodic oxides **8** and **9** and the gate electrodes **4** and **5** remain as a gate insulating film. (FIG. 10C)

After that, the anodic oxides **8** and **9** are removed. it is preferred that a solution containing phosphoric acid, for example, a mixture acid containing phosphoric acid, acetic acid and nitric acid is used as an etchant. In using an etchant containing phosphoric acid, an etching rate of a porous anodic oxide is ten times or more as large as that of a barrier type anodic oxide. Therefore, since barrier type anodic oxides **10** and **11** are not etched substantially by the etchant containing phosphoric acid, the gate electrodes can be protected from etching.

In such structure, a source and a drain are formed by implanting N-type or P-type impurity ion into an active layer. In a state wherein a left TFT region is covered with a mask **14**, a phosphorus ion is irradiated (introduced) by ion doping at a relatively low speed (an accelerating voltage of 5 to 30 kV, 20 kV in the embodiment). A doping gas is phosphine (PH₃). A dose is 5×10^{14} to 5×10^{15} cm⁻². In this process, since a phosphorus ion cannot be transmitted through the insulating film **13**, it is implanted into only region in which a surface is exposed, so that a drain **15** and a source **16** of an N-channel type TFT are formed. (FIG. 10D)

Also, a phosphorus ion is irradiated by ion doping at a relatively high speed (an accelerating voltage of 60 to 120 kV, 90 kV in the embodiment). A dose is 1×10^{13} to 5×10^{14} cm⁻². In this process, a phosphorus ion is transmitted through the insulating film **13** and reaches a region formed under the film **13**. However, since a dose is small, N-type regions **17** and **18** each having a low concentration are formed. (FIG. 10E)

After phosphorus doping, the mask is removed. Then, using the N-channel type TFT as a mask, as described above, a source **19**, a drain **20** and a P-type regions **21** and **22** each having a low concentration in a P-channel type TFT. A KrF excimer laser (wavelength of 248 nm and pulse width of 20 ns) is irradiated to activate an impurity ion introduced into an active layer.

A silicon oxide film having a thickness of 3000 to 6000 Å is formed as an interlayer insulator **23** on a whole surface by CVD. Also, contact holes are formed in a source and a drain of a TFT and then aluminum wiring-electrodes **24** to **26** are formed. Further, hydrogen annealing is performed at 200 to 400° C. As a result, a complementary inverter circuit using TFTs is completed. (FIG. 10F)

A shift register in the embodiment is formed in a basis of the above complementary inverter circuit. A shift register used in a driver circuit of an active matrix type display device and an active matrix circuit having pixel TFTs are formed on the same substrate.

Referring with FIG. 3, an embodiment of the present invention will be described.

In the embodiment, one main register line and one subregister line are used in each register group, and three registers are included in each register line. Also, the number of register groups is a positive integer and a multiple of three, for example.

As shown in FIG. 3, a shift register circuit **135** includes register groups **130a**, . . . , **130b**. The register group **130a** includes a main register line **131a** having registers SRM₁, SRM₂ and SRM₃ and a subregister line **131b** having registers

SRS₁, SRS₂ and SRS₃. The register group **130b** includes a main register line **131c** having registers SRM_{N-2}, SRM_{N-1} and SRM_N and a subregister line **131d** having registers SRS_{N-2}, SRS_{N-1} and SRS_N.

Register line selecting switches **133a** and **133b** are arranged to select the register lines in each register group. Defect detection terminals **134a** and **134b** are arranged to detect outputs of last registers of the register lines, so that whether or not each register line includes defect is detected.

Register column selecting switches **132a** to **132f** are arranged to select registers included in the selected register lines in each register group.

First, the main register line is examined by using the defect detection terminal in each register group. If the line is normal, the register line selecting switch is connected with the main register line. On the other hand, if the main register line has defect, the register line selecting switch is connected with the subregister line.

A conventional shift register circuit is compared with a shift register circuit according to the present invention.

In a conventional shift register circuit as shown in FIG. 2, when a defective rate per register is f_n ($0 < f_n < 1$) and the number of registers to be serial-connected is N (a positive integer and a multiple of three), a probability An which a conventional shift register circuit as shown in FIG. 2 is operated normally is obtained by the following equation,

$$An = (1 - f_n)^N.$$

In a shift register circuit of the present invention, the same defective rate per register f_n ($0 < f_n < 1$) is used. Also, the number of registers when all registers of each register group in one line are connected in serial is used as N (a positive integer and a multiple of three). Further, each register line includes three registers.

In this state, a probability Bn which one register group is not operated normally is obtained by the following equation,

$$Bn = \{1 - (1 - f_n)^3\}^2.$$

Therefore, since the number of register groups is N/3, a probability Cn which a whole shift register circuit is operated normally is obtained by the following equation,

$$\begin{aligned} Cn &= [1 - \{1 - (1 - f_n)^3\}^2]^{N/3} \\ &= [1 - \{1 - 2(1 - f_n)^3 + (1 - f_n)^6\}]^{N/3} \\ &= [(1 - f_n)3\{2 - (1 - f_n)^3\}]^{N/3} \end{aligned}$$

If $F_n = 1 - f_n$ and $r = N/3$ (r is a positive integer),

$$An = F_n^{3r}, \text{ and}$$

$$Cn = F_n^{3r} (2 - F_n^3)^r.$$

In this state, from $0 < f_n < 1$,

$$0 < (1 - f_n)^3 = F_n^3 < 1, \text{ and}$$

$$0 < F_n^3 < 1.$$

Therefore,

$$1 < (2 - F_n^3) < 2, \text{ and}$$

$$1 < (2 - F_n^3)^r < 2^r.$$

From the above relationship,

$$Cn - An = F_n^{3r} \{ (2 - F_n^{3r} - 1) \} > 0.$$

As a result, $An < Cn$.

When the number of registers included in a source driver circuit is 480 and a defective rate of register is 0.001, a probability An' which a conventional source driver circuit is operated normally is

$$An' = (1 - 0.001)^{480} = 0.619.$$

On the other hand, a probability Cn' which a redundancy source driver circuit according to the present invention is operated normally is

$$Cn' = [1 - \{1 - (1 - 0.001)^3\}^2]^{480/3} = 0.999.$$

Therefore, it is confirmed that $An' < Cn'$.

As described above, redundancy of a register line increases a probability which a shift register is operated normally. If a defective rate per register is the same, this relationship is always obtained without depending on the number of registers included in one register line, the number of register lines and the number of register groups.

Structures of a register line selecting switch will be described below using FIGS. 11A and 11B.

The register line selecting switch includes bias circuit 90a to 90g, a priority encoder circuit 81 and a multiplexer circuit 82.

Output terminals of register lines 80a to 80h are connected with input terminals (X) of the multiplexer 82. The bias circuits are arranged in correspondent to register lines each having an output terminal, and the output terminals are connected with input terminals (X) of the priority encoder circuit 81.

When outputs of the bias circuits are held, the priority encoder circuit 81 converts a bit position of L of bit string to be input into binary data and then outputs the binary data (bit string) from output terminals (Y) to input signal selecting terminals (S) of the multiplexer circuit 82 and input signal selecting terminals (S) of a multiplexer circuit 83 used as a register column selecting switch through inverter circuits.

As described above, one of the register lines is selected using a register line selecting switch constructed by a combination of the priority encoder circuit 81, the multiplexer circuit 82 and the bias circuits 90a to 90g.

FIG. 7A shows an equivalent circuit of a 8 bit priority encoder circuit, and FIG. 7B shows an equivalent circuit of a 8 bit input multiplexer circuit. Also, FIG. 12 shows a truth table of the priority encoder circuit of FIG. 7A.

FIG. 4 shows a case wherein two register lines 140a and 140b are used in one register group. Since the number of register lines is 2, it is not necessary to use a priority encoder circuit as described above. Therefore, outputs of all register lines 140a and 140b are connected with input terminals (X) of a multiplexer circuit 141 for register line selection. An output terminal of a bias circuit 144 is connected with an input signal selecting terminal (S) of the multiplexer circuit 141. Defect detection terminals 143a and 143b are used to detect a register line having defect.

When one of register line is normal, a low level (L) bias is supplied to the bias circuit 144 corresponding to the one of the register lines. Therefore, since a level of the input signal selecting terminal (S) of the multiplexer circuit 141 is determined, the multiplexer circuit 141 selects a normal register line, to use an output of a last register of the selected register line as an output of a register group having the selected register line.

A structure of a register column selecting switch will be described below using FIG. 4.

Register column selecting switches includes multiplexer circuits 142a, . . . , and 142b, respectively. Outputs of the registers SR_1 (SR_n) constructing each column are connected with input terminals (X) of the multiplexer circuits 142a (142b) for register column selection. To select a register in a column, an output of the bias circuit 144 is connected with input signal selecting terminals (s) of the multiplexer circuits 142a and 142b.

As described above, a register column selecting switch is constructed by a combination of the bias circuit 144 and the multiplexer circuits 142a and 142b.

A structure of a bias circuit will be described using FIGS. 8A to 8C.

In a bias circuit as shown in FIG. 8A, a pull-up resistor is connected with a pull-down resistor in serial, and an output terminal and a cutting portion are provided between these resistors. A resistance value ratio between the pull-up resistor and the pull-down resistor is 100:1, and may be set in a range which a voltage level detected on the output terminal becomes a low level (L).

A bias circuit corresponding to a normal register line holds a low level (L), and bias circuits corresponding to register lines other than the normal register line holds a high level (H) by cutting a cutting portion of the bias circuit using a laser to obtain a pull-up state. As a result, an input signal of the multiplexer circuit can be selected.

In a bias circuit as shown in FIG. 8B, an analog switch using an N-type TFT is used. As described above, a bias circuit corresponding to a normal register line holds a low level (L), and bias circuits corresponding to register lines other than the normal register line holds a high level (H) by cutting a cutting portion of the bias circuit using a laser to obtain a pull-up state. As a result, an input signal of the multiplexer circuit can be selected.

FIG. 8C shows cutting of a cutting portion of a bias circuit. The cutting portion may be cut by applying a high voltage to two foot prints.

As shown in FIGS. 11A and 11B, in a case wherein the number of register lines is n ($n > 2$), outputs of last registers of all register lines 80a to 80n are connect with input terminals (X) of a multiplexer circuit 82 for register line selection. Also, bias circuits 90a to 90g each having output terminals are arranged in correspondence to the register lines, and the output terminals of the bias circuits 90a to 90g are connected with input terminals (X) of the priority encoder circuit 81. The output terminals of the priority encoder circuit 81 is connected with input signal selection terminals of the multiplexer circuit 82 through inverter circuits.

When a normal register line is detected, an output of a bias circuit corresponding to the register line is held to a low level (L). An output of a bias circuit corresponding to the register line is held to a low level (L). Also, an output of a bias circuit corresponding to the register line other than the normal register line is held to a high level (H). As described above, outputs of the priority encoder circuit 81 are determined by holding output levels of the output terminals of the bias circuits. Therefore, since levels of input signal selection terminals of the multiplexer circuit 82 are determined, the multiplexer circuit 82 selects a normal register line, so that an output of a last register of the selected register line is input to an input terminal of an OR circuit 84. An output of the OR circuit 84 is used as an input of next register group in a case wherein a plurality of register groups are arranged in a shift register circuit.

A register column is defined at a column direction of registers of register lines. Multiplexer circuits for register column selection are arranged for each register column. The number of the multiplexer circuits for register column selection coincide with the number of registers of one register line.

When a normal register line is selected in one register group, an output of the priority encoder circuit 81 is input to input signal selection terminals (S) of a multiplexer circuit 83 for register column selection through inverter circuits. Therefore, registers included in the selected register line are selected in a column direction, so that sample timing signals can be output to source lines of an active matrix type display device.

FIG. 13 shows a case wherein two register lines 140a and 140b are used in one register group and a shift register circuit has only one register group. As shown in FIG. 13, a multiplexer circuit for register line selection can be omitted in comparison with FIG. 4.

As described above, a normal register line is selected in each register group, and a shift register circuit is constructed by connecting with each register group each other.

In the above embodiment, although a complementary type is used, a circuit using an N-channel type or a P-channel type may be constructed. In this state, since only one impurity doping process is performed, the number of forming processes can be decreased.

FIGS. 9A to 9C show shift register circuit constructed by only P-channel type. FIG. 9A shows an inverter circuit constructed using P-channel transistors and resistors. In FIG. 9A, the inverter circuit includes an input terminal IT, a first thin film transistor (TFT) 1, a second TFT 2, a third TFT 3, a fourth TFT 4, and an output terminal OT. Here, a first terminal 1T1 of the first TFT 1 is electrically connected to the input terminal IT, and a second terminal 1T2 of the first TFT 1 is electrically connected to a first terminal 2T1 of the second TFT 2 and to a gate terminal 3GT of the third TFT 3. A first terminal 3T1 of the third TFT 3 is electrically connected to a first power source VDD, and a second terminal 3T2 of the third TFT 3 is electrically connected to a second power source GND via a first resistance element R1. A first terminal 4T1 of the fourth TFT 4 is electrically connected to the first power source VDD, and a second terminal 4T2 of the fourth TFT 4 is electrically connected to the second power source GND via a second resistance element R2. A second terminal 2T2 of the second TFT 2 is electrically connected to the second terminal 4T2 of the fourth TFT 4, and the output terminal OT is electrically connected to the second terminal 3T2 of the third TFT 3 and to a gate terminal 4GT of the fourth TFT 4. In FIG. 9A, a clock signal CK is inputted to a gate terminal 1GT of the first TFT 1, and an inverted clock signal $\overline{\text{CK}}$ is inputted to a gate terminal 2GT of the second TFT 2. In addition, each of the first, second, third, and fourth TFTs 1, 2, 3, and 4 includes an active layer having a channel forming region comprising an impurity element have a same conductivity type, wherein the active layer comprises crystallized silicon. At least one of the first, second, third, and fourth TFTs 1, 2, 3, and 4 has at least one lightly doped region formed using the gate electrode of the corresponding TFT as a mask.

FIG. 9B shows an inverter circuit constructed using P-channel transistors. In FIG. 9B, the inverter circuit includes an input terminal IT, a first thin film transistor (TFT) 1, a second TFT 2, a third TFT 3, a fourth TFT 4, a fifth TFT 5, a sixth TFT 6, and an output terminal OT. Here, a first terminal 1T1 of the first TFT 1 is electrically connected to the input terminal IT, and a second terminal 1T2 of the first TFT 1 is electrically connected to a first terminal 2T1 of the second TFT 2 and to a gate terminal 3GT of the third TFT 3. A first

terminal 3T1 of the third TFT 3 is electrically connected to a first power source VDD, and a second terminal 3T2 of the third TFT 3 is electrically connected to a second power source GND and to a first terminal 5T1 of the fifth TFT 5. A second terminal 5T2 of the fifth TFT 5 is electrically connected to a gate terminal 5GT of the fifth TFT 5 and to a second power source GND. A first terminal 4T1 of the fourth TFT 4 is electrically connected to the first power source VDD, and a second terminal 4T2 of the fourth TFT 4 is electrically connected to the second power source GND and to a first terminal 6T1 of the sixth TFT 6. A second terminal 6T2 of the sixth TFT 6 is electrically connected to a gate terminal 6GT of the sixth TFT 6 and to the second power source GND. A second terminal 2T2 of the second TFT 2 is electrically connected to the second terminal 4T2 of the fourth TFT 4, wherein the output terminal OT is electrically connected to the second terminal 3T2 of the third TFT 3 and to a gate terminal 4GT of the fourth TFT 4. In FIG. 9B, a clock signal CK is inputted to a gate terminal 1GT of the first TFT 1, and an inverted clock signal $\overline{\text{CK}}$ is inputted to a gate terminal 2GT of the second TFT 2. In addition, each of the first, second, third, fourth, fifth, and sixth TFTs 1, 2, 3, 4, 5, and 6 includes an active layer having a channel forming region comprising an impurity element have a same conductivity type, wherein the active layer comprises crystallized silicon. At least one of the first, second, third, fourth, fifth, and sixth TFTs 1, 2, 3, 4, 5, and 6 has at least one lightly doped region formed using the gate electrode of the corresponding TFT as a mask.

FIG. 9C shows a dynamic type shift register. In FIG. 9C, the shift register includes an input terminal IT, a first thin film transistor (TFT) 1, a second TFT 2, a third TFT 3, a fourth TFT 4, a fifth TFT 5, a sixth TFT 6, and an output terminal OT. Here, a first terminal 1T1 of the first TFT 1 is electrically connected to the input terminal IT, and a gate terminal 2GT of the second TFT 2 is electrically connected to a second terminal 1T2 of the first TFT 1. A first terminal 2T1 of the second TFT 2 is electrically connected to a first power source VDD, and a first terminal 4T1 of the fourth TFT 4 is electrically connected to a second terminal 2T2 of the second TFT 2, to a first terminal 3T1 of the third TFT 3, and to a second power source GND via a first capacitor C1. A first terminal 5T1 of the fifth TFT 5 is electrically connected to the first power source VDD, and a gate terminal 5GT of the fifth TFT 5 is electrically connected to a second terminal 4T2 of the fourth TFT 4 and the second power source GND via a second capacitor C2. A first terminal 6T1 of the sixth TFT 6 is electrically connected to a second terminal 5T2 of the fifth TFT 5, and the output terminal OT is electrically connected to the second terminal 6T2 of the sixth TFT 6 and to a second terminal 3T2 of the third TFT 3. In FIG. 9C, a clock signal CK is inputted to a gate terminal 1GT of the first TFT 1 and to a gate terminal 3GT of the third TFT 3, and an inverted clock signal $\overline{\text{CK}}$ is inputted to a gate terminal 4GT of the fourth TFT 4 and to a gate terminal 6GT of the sixth TFT 6. In addition, each of the first, second, third, fourth, fifth, and sixth TFTs 1, 2, 3, 4, 5, and 6 includes an active layer having a channel forming region comprising an impurity element have a same conductivity type, wherein the active layer comprises crystallized silicon. At least one of the first, second, third, fourth, fifth, and sixth TFTs 1, 2, 3, 4, 5, and 6 has at least one lightly doped region formed using the gate electrode of the corresponding TFT as a mask.

A multiplexer circuit, a priority encoder circuit and like can be constructed using P-channel transistors and resistors.

In the embodiment, although only P-channel type transistor is used, a N-channel type transistor can be used.

According to the present invention, a defective rate of one register is constant and redundancy shift register circuit is used, so that a yield of a whole shift register circuit can be increased and reliability of a shift register circuit can be improved.

What is claimed is:

1. An active matrix display device comprising:
a substrate having an insulating surface;

a pixel portion comprising a pixel comprising:

a switching TFT over the substrate; and
a display element over the substrate, electrically connected to the switching TFT; and

a driver circuit comprising a shift register comprising an inverter circuit comprising:

an input terminal;
a first TFT over the substrate;
a second TFT over the substrate;
a third TFT over the substrate;
a fourth TFT over the substrate; and
an output terminal,

wherein a first terminal of the first TFT is electrically connected to the input terminal,

wherein a second terminal of the first TFT is electrically connected to a first terminal of the second TFT, and to a gate terminal of the third TFT,

wherein a first terminal of the third TFT is electrically connected to a first power source,

wherein a second terminal of the third TFT is electrically connected to a second power source, via a first resistance element,

wherein a first terminal of the fourth TFT is electrically connected to the first power source,

wherein a second terminal of the fourth TFT is electrically connected to the second power source, via a second resistance element,

wherein a second terminal of the second TFT is electrically connected to the second terminal of the fourth TFT,

wherein the output terminal is electrically connected to the second terminal of the third TFT, and to a gate terminal of the fourth TFT,

wherein a clock signal is inputted to a gate terminal of the first TFT,

wherein an inverted clock signal is inputted to a gate terminal of the second TFT, and wherein each of the switching TFT, the first TFT, the second TFT, the third TFT and the fourth TFT comprises an active layer having a channel forming region comprising an impurity element having a same conductivity type.

2. An active matrix display device comprising:

a substrate having an insulating surface;

a pixel portion comprising a pixel comprising:

a switching TFT over the substrate; and
a display element over the substrate, electrically connected to the switching TFT; and

a driver circuit comprising a shift register comprising an inverter circuit comprising:

an input terminal;
a first TFT over the substrate;
a second TFT over the substrate;
a third TFT over the substrate;
a fourth TFT over the substrate;
a fifth TFT over the substrate;
a sixth TFT over the substrate; and
an output terminal,

wherein a first terminal of the first TFT is electrically connected to the input terminal,

wherein a second terminal of the first TFT is electrically connected to a first terminal of the second TFT, and to a gate terminal of the third TFT,

wherein a first terminal of the third TFT is electrically connected to a first power source,

wherein a second terminal of the third TFT is electrically connected to a second power source, and to a first terminal of the fifth TFT,

wherein a second terminal of the fifth TFT is electrically connected to a gate terminal of the fifth TFT, and to a second power source,

wherein a first terminal of the fourth TFT is electrically connected to the first power source,

wherein a second terminal of the fourth TFT is electrically connected to the second power source, and to a first terminal of the sixth TFT,

wherein a second terminal of the sixth TFT is electrically connected to a gate terminal of the sixth TFT, and to the second power source,

wherein a second terminal of the second TFT is electrically connected to the second terminal of the fourth TFT,

wherein the output terminal is electrically connected to the second terminal of the third TFT, and to a gate terminal of the fourth TFT,

wherein a clock signal is inputted to a gate terminal of the first TFT,

wherein an inverted clock signal is inputted to a gate terminal of the second TFT, and

wherein each of the switching TFT, the first TFT, the second TFT, the third TFT, the fourth TFT, the fifth TFT and the sixth TFT comprises an active layer having a channel forming region comprising an impurity element having a same conductivity type.

3. An active matrix display device comprising:

a substrate having an insulating surface;

a pixel portion comprising a pixel comprising:

a switching TFT over the substrate; and
a display element over the substrate, electrically connected to the switching TFT; and

a driver circuit comprising a shift register comprising an inverter circuit comprising:

an input terminal;
a first TFT over the substrate;
a second TFT over the substrate;
a third TFT over the substrate;
a fourth TFT over the substrate;
a fifth TFT over the substrate;
a sixth TFT over the substrate; and
an output terminal,

wherein a first terminal of the first TFT is electrically connected to the input terminal, wherein a gate terminal of the second TFT is electrically connected to a second terminal of the first TFT,

wherein a first terminal of the second TFT is electrically connected to a first power source,

wherein a first terminal of the fourth TFT is electrically connected to a second terminal of the second TFT, to a first terminal of the third TFT, and to a second power source via a first capacitor,

wherein a first terminal of the fifth TFT is electrically connected to the first power source,

wherein a gate terminal of the fifth TFT is electrically connected to a second terminal of the fourth TFT, and the second power source via a second capacitor,

wherein a first terminal of the sixth TFT is electrically connected to a second terminal of the fifth TFT,

15

wherein the output terminal is electrically connected to the second terminal of the sixth TFT, and to a second terminal of the third TFT,
 wherein a clock signal is inputted to a gate terminal of the first TFT, and to a gate terminal of the third TFT,
 wherein an inverted clock signal is inputted to a gate terminal of the fourth TFT, and to a gate terminal of the sixth TFT, and
 wherein each of the switching TFT, the first TFT, the second TFT, the third TFT, the fourth TFT, the fifth TFT and the sixth TFT comprises an active layer having a channel forming region comprising an impurity element having a same conductivity type.

4. An active matrix display device comprising:
 a substrate having an insulating surface;
 a pixel portion comprising a pixel comprising:
 a switching TFT over the substrate; and
 a display element over the substrate, electrically connected to the switching TFT; and
 a driver circuit comprising a shift register comprising an inverter circuit comprising:
 an input terminal;
 a first TFT over the substrate;
 a second TFT over the substrate;
 a third TFT over the substrate;
 a fourth TFT over the substrate; and
 an output terminal,
 wherein a first terminal of the first TFT is electrically connected to the input terminal,
 wherein a second terminal of the first TFT is electrically connected to a first terminal of the second TFT, and to a gate terminal of the third TFT,
 wherein a first terminal of the third TFT is electrically connected to a first power source,
 wherein a second terminal of the third TFT is electrically connected to a second power source, via a first resistance element,
 wherein a first terminal of the fourth TFT is electrically connected to the first power source,
 wherein a second terminal of the fourth TFT is electrically connected to the second power source, via a second resistance element,
 wherein a second terminal of the second TFT is electrically connected to the second terminal of the fourth TFT,
 wherein the output terminal is electrically connected to the second terminal of the third TFT, and to a gate terminal of the fourth TFT,
 wherein a clock signal is inputted to a gate terminal of the first TFT,
 wherein an inverted clock signal is inputted to a gate terminal of the second TFT,
 wherein each of the switching TFT, the first TFT, the second TFT, the third TFT and the fourth TFT comprises an active layer having a channel forming region comprising an impurity element having a same conductivity type, and
 wherein the active layer comprises crystallized silicon.

5. An active matrix display device comprising:
 a substrate having an insulating surface;
 a pixel portion comprising a pixel comprising:
 a switching TFT over the substrate; and
 a display element over the substrate, electrically connected to the switching TFT; and
 a driver circuit comprising a shift register comprising an inverter circuit comprising:
 an input terminal;
 a first TFT over the substrate;

16

a second TFT over the substrate;
 a third TFT over the substrate;
 a fourth TFT over the substrate;
 a fifth TFT over the substrate;
 a sixth TFT over the substrate; and
 an output terminal,
 wherein a first terminal of the first TFT is electrically connected to the input terminal,
 wherein a second terminal of the first TFT is electrically connected to a first terminal of the second TFT, and to a gate terminal of the third TFT,
 wherein a first terminal of the third TFT is electrically connected to a first power source,
 wherein a second terminal of the third TFT is electrically connected to a second power source, and to a first terminal of the fifth TFT,
 wherein a second terminal of the fifth TFT is electrically connected to a gate terminal of the fifth TFT, and to a second power source,
 wherein a first terminal of the fourth TFT is electrically connected to the first power source,
 wherein a second terminal of the fourth TFT is electrically connected to the second power source, and to a first terminal of the sixth TFT,
 wherein a second terminal of the sixth TFT is electrically connected to a gate terminal of the sixth TFT, and to the second power source,
 wherein a second terminal of the second TFT is electrically connected to the second terminal of the fourth TFT,
 wherein the output terminal is electrically connected to the second terminal of the third TFT, and to a gate terminal of the fourth TFT,
 wherein a clock signal is inputted to a gate terminal of the first TFT,
 wherein an inverted clock signal is inputted to a gate terminal of the second TFT,
 wherein each of the switching TFT, the first TFT, the second TFT, the third TFT, the fourth TFT, the fifth TFT and the sixth TFT comprises an active layer having a channel forming region comprising an impurity element having a same conductivity type, and
 wherein the active layer comprises crystallized silicon.

6. An active matrix display device comprising:
 a substrate having an insulating surface;
 a pixel portion comprising a pixel comprising:
 a switching TFT over the substrate; and
 a display element over the substrate, electrically connected to the switching TFT; and
 a driver circuit comprising a shift register comprising an inverter circuit comprising:
 an input terminal;
 a first TFT over the substrate;
 a second TFT over the substrate;
 a third TFT over the substrate;
 a fourth TFT over the substrate;
 a fifth TFT over the substrate;
 a sixth TFT over the substrate; and
 an output terminal,
 wherein a first terminal of the first TFT is electrically connected to the input terminal,
 wherein a gate terminal of the second TFT is electrically connected to a second terminal of the first TFT,
 wherein a first terminal of the second TFT is electrically connected to a first power source,

wherein a first terminal of the fourth TFT is electrically connected to a second terminal of the second TFT, to a first terminal of the third TFT, and to a second power source via a first capacitor,
 wherein a first terminal of the fifth TFT is electrically connected to the first power source,
 wherein a gate terminal of the fifth TFT is electrically connected to a second terminal of the fourth TFT, and the second power source via a second capacitor,
 wherein a first terminal of the sixth TFT is electrically connected to a second terminal of the fifth TFT,
 wherein the output terminal is electrically connected to the second terminal of the sixth TFT, and to a second terminal of the third TFT,
 wherein a clock signal is inputted to a gate terminal of the first TFT, and to a gate terminal of the third TFT,
 wherein an inverted clock signal is inputted to a gate terminal of the fourth TFT, and to a gate terminal of the sixth TFT,
 wherein each of the switching TFT, the first TFT, the second TFT, the third TFT, the fourth TFT, the fifth TFT and the sixth TFT comprises an active layer having a channel forming region comprising an impurity element having a same conductivity type, and
 wherein the active layer comprises crystallized silicon.

7. The active matrix display device, according to claim 1, wherein at least one of the first TFT, the second TFT, the third TFT and the fourth TFT has at least one lightly doped region.

8. The active matrix display device, according to claim 2, wherein at least one of the first TFT, the second TFT, the third TFT, the fourth TFT, the fifth TFT and the sixth TFT has at least one lightly doped region.

9. The active matrix display device, according to claim 3, wherein at least one of the first TFT, the second TFT, the third TFT, the fourth TFT, the fifth TFT and the sixth TFT has at least one lightly doped region.

10. The active matrix display device, according to claim 4, wherein at least one of the first TFT, the second TFT, the third TFT and the fourth TFT has at least one lightly doped region.

11. The active matrix display device, according to claim 5, wherein at least one of the first TFT, the second TFT, the third TFT, the fourth TFT, the fifth TFT and the sixth TFT has at least one lightly doped region.

12. The active matrix display device, according to claim 6, wherein at least one of the first TFT, the second TFT, the third TFT, the fourth TFT, the fifth TFT and the sixth TFT has at least one lightly doped region.

13. The active matrix display device, according to claim 7, wherein each of the first TFT, the second TFT, the third TFT and the fourth TFT has a gate electrode, wherein the lightly doped region is formed by an ion doping method, using the gate electrode as a mask.

14. The active matrix display device, according to claim 8, wherein each of the first TFT, the second TFT, the third TFT,

the fourth TFT, the fifth TFT and the sixth TFT has a gate electrode, wherein the lightly doped region is formed by an ion doping method, using the gate electrode as a mask.

15. The active matrix display device, according to claim 9, wherein each of the first TFT, the second TFT, the third TFT, the fourth TFT, the fifth TFT and the sixth TFT has a gate electrode, wherein the lightly doped region is formed by an ion doping method, using the gate electrode as a mask.

16. The active matrix display device, according to claim 10, wherein each of the first TFT, the second TFT, the third TFT and the fourth TFT has a gate electrode, wherein the lightly doped region is formed by an ion doping method, using the gate electrode as a mask.

17. The active matrix display device, according to claim 11, wherein each of the first TFT, the second TFT, the third TFT, the fourth TFT, the fifth TFT and the sixth TFT has a gate electrode, wherein the lightly doped region is formed by an ion doping method, using the gate electrode as a mask.

18. The active matrix display device, according to claim 12, wherein each of the first TFT, the second TFT, the third TFT, the fourth TFT, the fifth TFT and the sixth TFT has a gate electrode, wherein the lightly doped region is formed by an ion doping method, using the gate electrode as a mask.

19. The active matrix display device, according to claim 1, wherein the display element comprising an emissive material.

20. The active matrix display device, according to claim 2, wherein the display element comprising an emissive material.

21. The active matrix display device, according to claim 3, wherein the display element comprising an emissive material.

22. The active matrix display device, according to claim 4, wherein the display element comprising an emissive material.

23. The active matrix display device, according to claim 5, wherein the display element comprising an emissive material.

24. The active matrix display device, according to claim 6, wherein the display element comprising an emissive material.

25. The active matrix display device, according to claim 1, wherein the display element comprising a liquid crystal material.

26. The active matrix display device, according to claim 2, wherein the display element comprising a liquid crystal material.

27. The active matrix display device, according to claim 3, wherein the display element comprising a liquid crystal material.

28. The active matrix display device, according to claim 4, wherein the display element comprising a liquid crystal material.

29. The active matrix display device, according to claim 5, wherein the display element comprising a liquid crystal material.

30. The active matrix display device, according to claim 6, wherein the display element comprising a liquid crystal material.

* * * * *

专利名称(译)	用于有源矩阵型液晶显示装置中的驱动电路的冗余移位寄存器电路		
公开(公告)号	US7477222	公开(公告)日	2009-01-13
申请号	US11/166142	申请日	2005-06-27
[标]申请(专利权)人(译)	株式会社半导体能源研究所		
申请(专利权)人(译)	半导体能源研究所有限公司.		
当前申请(专利权)人(译)	半导体能源研究所有限公司.		
[标]发明人	KOYAMA JUN KAWASAKI YUJI		
发明人	KOYAMA, JUN KAWASAKI, YUJI		
IPC分类号	G09G3/36 G11C19/00 G11C19/18 G11C19/28 G11C29/00		
CPC分类号	G09G3/3677 G09G3/3688 G11C19/00 G11C19/184 G11C19/28 G11C29/86 G09G3/3648 G09G2310/0267 G09G2310/0275 G09G2330/08		
审查员(译)	SHANKAR , VIJAY		
优先权	1994107574 1994-04-22 JP		
其他公开文献	US20050259060A1		
外部链接	Espacenet USPTO		

摘要(译)

一种有源矩阵显示装置，包括：基板，具有绝缘表面；多个像素电极，以矩阵形式布置在基板上；以及多个开关元件，可操作地连接到像素电极。每个开关元件还包括薄膜晶体管。该显示装置还包括显示介质和驱动电路，该显示介质包括能够电改变设置在每个像素电极处的发光强度的发光材料，该驱动电路包括用于驱动多个开关元件的多个薄膜晶体管。多个薄膜晶体管中的每一个包括结晶半导体层，与结晶半导体层相邻的栅极绝缘膜和与栅极绝缘膜相邻的栅电极。

