



US006509949B1

(12) **United States Patent**
Lu et al.

(10) **Patent No.:** **US 6,509,949 B1**
(45) **Date of Patent:** **Jan. 21, 2003**

(54) **METHOD OF RESIZING A LIQUID CRYSTAL DISPLAY**

(75) Inventors: **Kanghua Lu**, Waldwick, NJ (US);
Robert J. Saccomanno, Montville, NJ (US);
Ron Welch, Oak Ridge, NY (US);
Glen Merle Thompson, Pequannock, NJ (US);
Thomas P. Marron, Wayne, NJ (US)

(73) Assignee: **Honeywell International Inc.**,
Morristown, NJ (US)

(*) Notice: Subject to any disclaimer, the term of this patent is extended or adjusted under 35 U.S.C. 154(b) by 0 days.

(21) Appl. No.: **09/696,441**

(22) Filed: **Oct. 25, 2000**

Related U.S. Application Data

(60) Provisional application No. 60/172,753, filed on Dec. 20, 1999.

(51) **Int. Cl.⁷** **G02F 1/1333**

(52) **U.S. Cl.** **349/187; 349/192**

(58) **Field of Search** 349/153, 187,
349/190, 192, 96, 117

(56) **References Cited**

U.S. PATENT DOCUMENTS

4,094,058 A 6/1978 Yasutake et al. 29/592 R
4,255,848 A 3/1981 Freer et al. 29/592 R

4,275,494 A 6/1981 Kobyama et al. 29/592 R
4,455,185 A 6/1984 Sasaki et al. 156/250
4,597,636 A 7/1986 Hoshikawa 350/334
4,829,404 A * 5/1989 Jensen 361/398
4,830,554 A 5/1989 Lopez 409/164
5,150,237 A * 9/1992 Iimura et al. 359/73
5,175,638 A * 12/1992 Kanemoto et al. 359/73
5,659,477 A * 8/1997 Collins 36/468.01
5,783,289 A 7/1998 Suzuki et al. 428/195
6,093,578 A * 7/2000 Klappert et al. 348/30
6,204,906 B1 * 3/2001 Tannas 349/153

FOREIGN PATENT DOCUMENTS

WO WO 99/19765 * 4/1999 G02F/1/1333

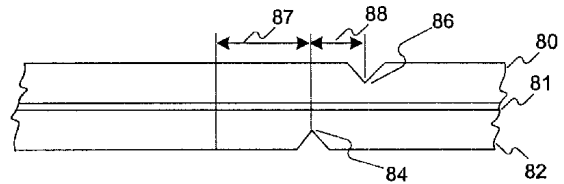
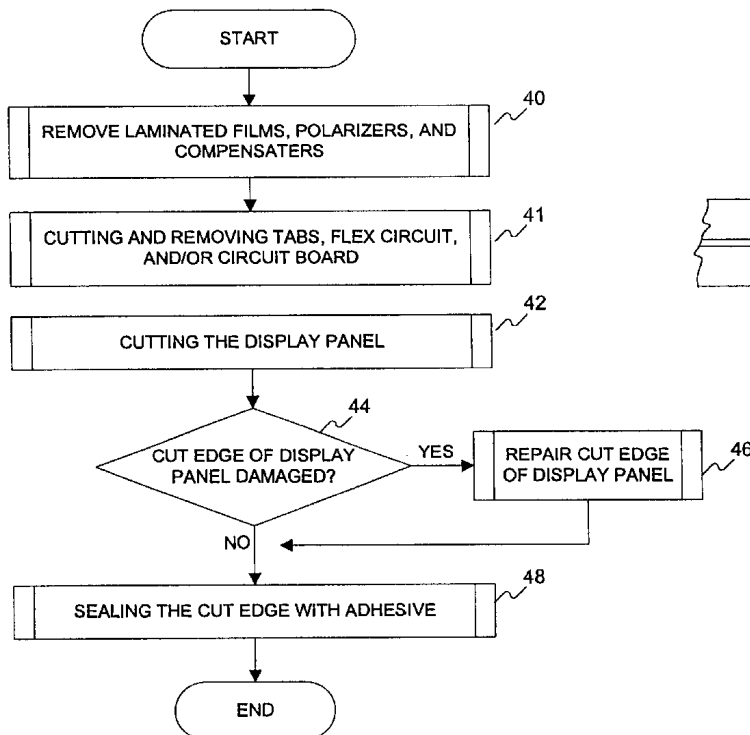
* cited by examiner

Primary Examiner—Toan Ton
Assistant Examiner—Hoan Nguyen

(57) **ABSTRACT**

A method of resizing a liquid crystal display (LCD) includes the steps of first determining a desired size for the LCD, thereby identifying an undesired portion of the LCD. Any tape automated bonding strips (TABs) corresponding to the undesired portions of the LCD are then removed. Any flex circuits, or portion thereof, corresponding to the undesired portion of the LCD are cut and removed. Any circuit boards, or portions thereof, corresponding to the undesired portion of the LCD are cut and removed. The display panel is cut to remove a portion of the display panel corresponding to the undesired portion of the LCD. Finally, the cut edge of the display panel is sealed.

12 Claims, 5 Drawing Sheets



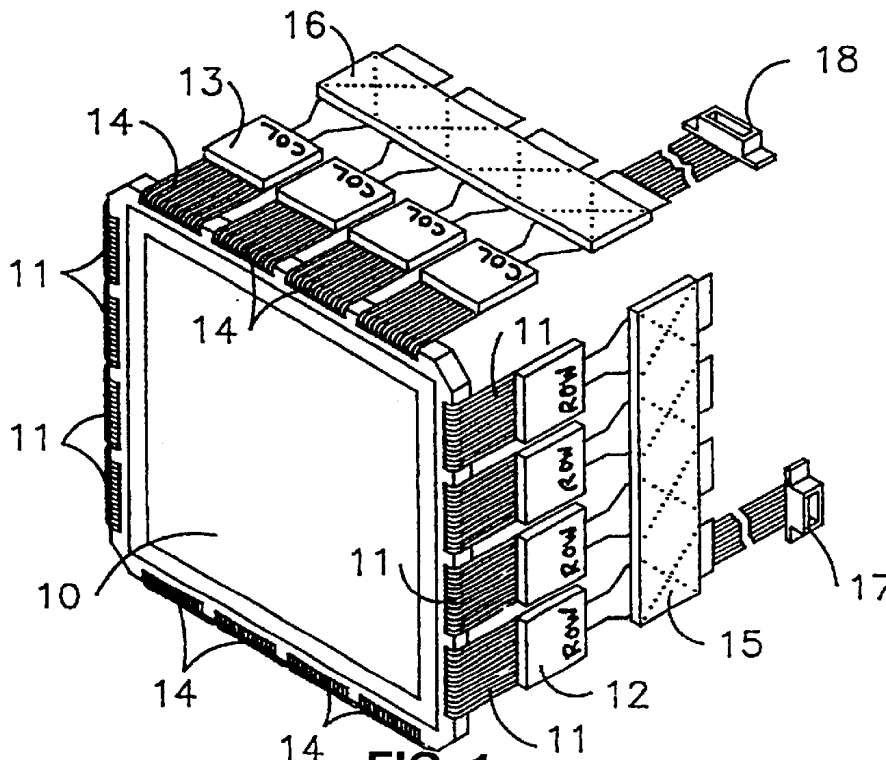


FIG. 1
(PRIOR ART)

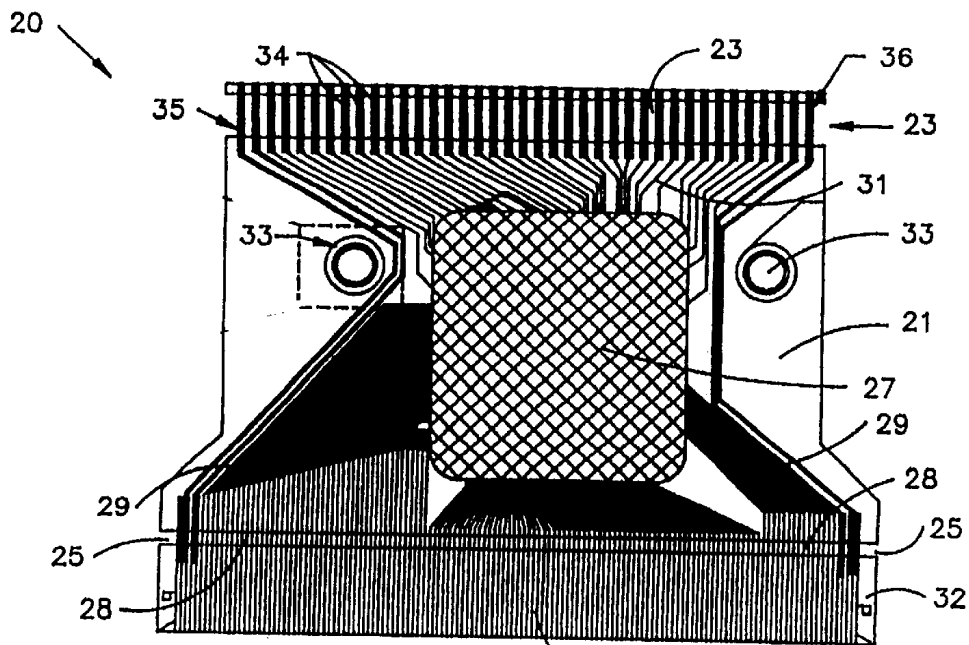


FIG. 2
(PRIOR ART)

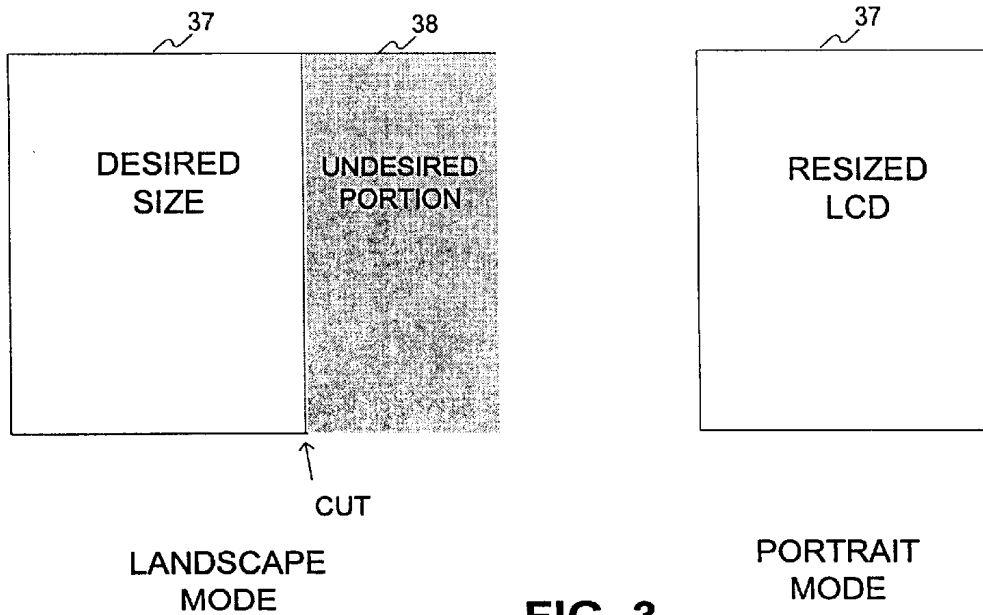


FIG. 3

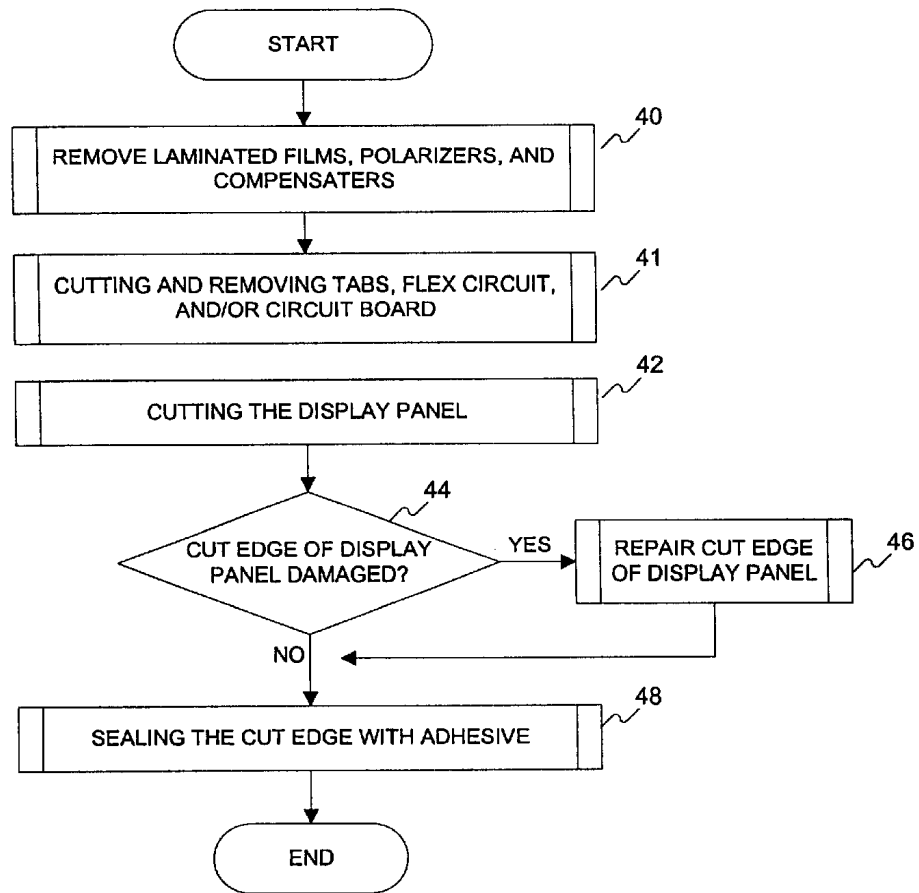


FIG. 4

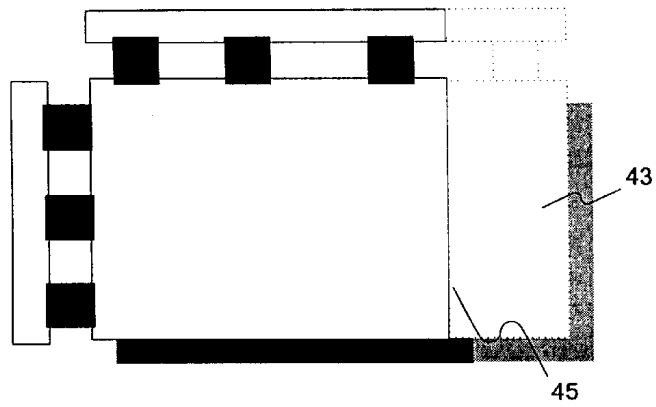


FIG. 4A

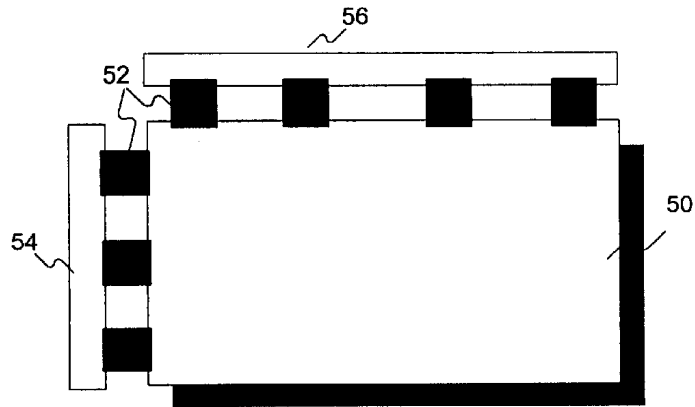


FIG. 5

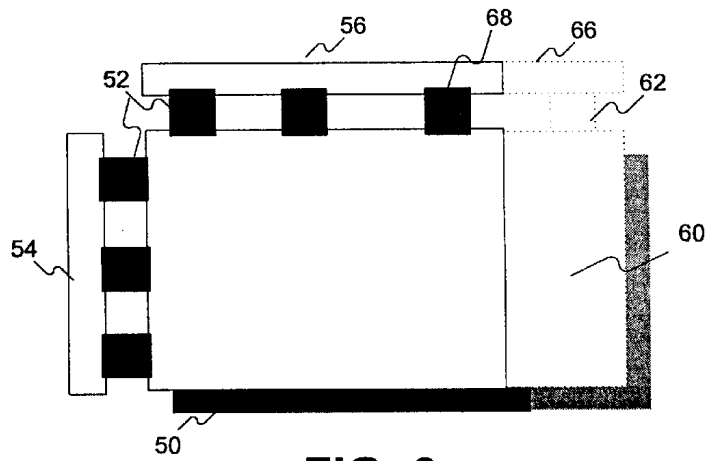


FIG. 6

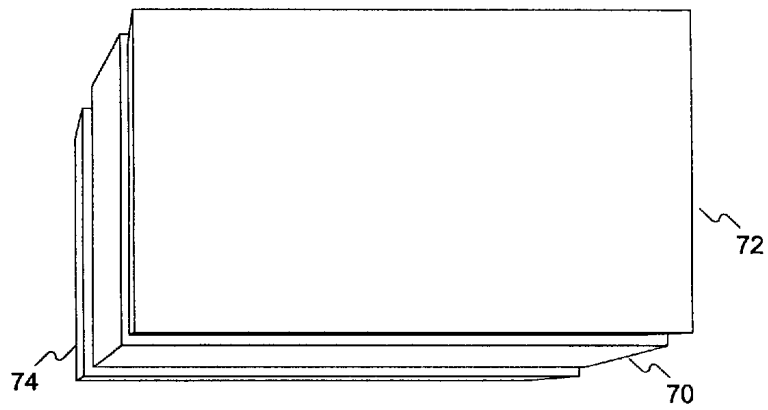


FIG. 7

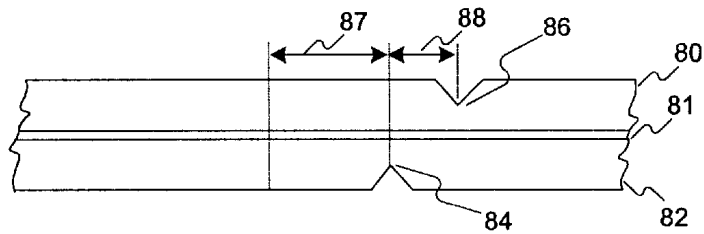


FIG. 8

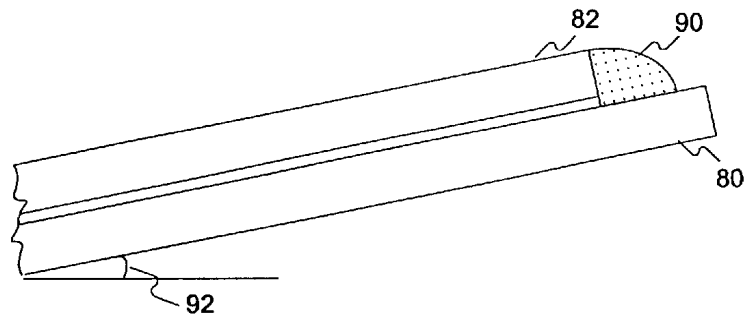


FIG. 9

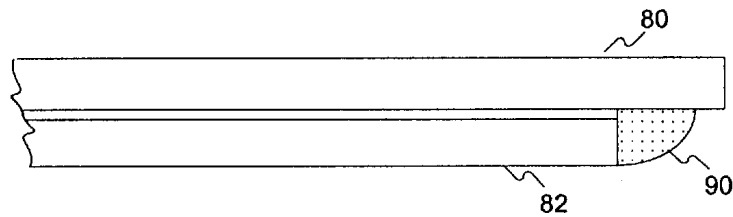


FIG. 10

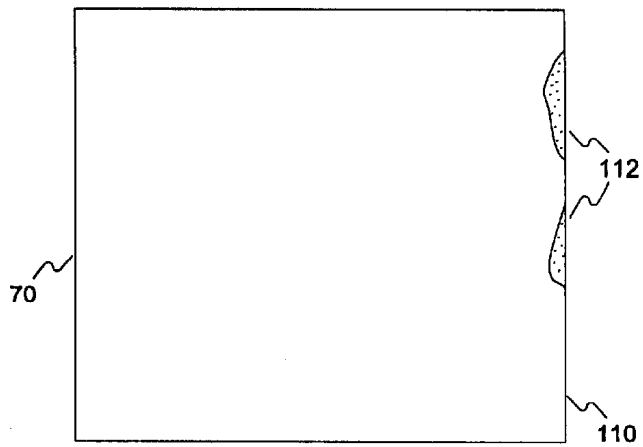


FIG. 11

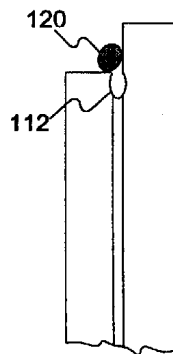


FIG. 12

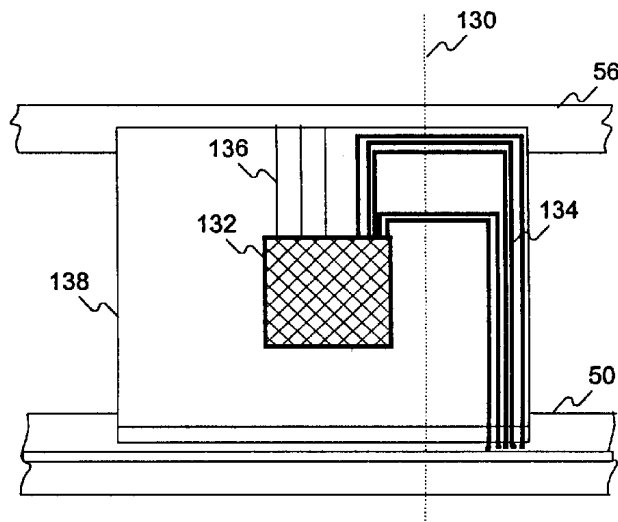


FIG. 13

METHOD OF RESIZING A LIQUID CRYSTAL DISPLAY

RELATED APPLICATION

The present application claims the priority of U.S. Provisional Application No. 60/172,753, entitled Method of Resizing a Liquid Crystal Display, filed on Dec. 20, 1999, the entirety of which is hereby incorporated by reference.

BACKGROUND OF THE INVENTION

1. Field of the Invention

This invention relates generally to a liquid crystal display (LCD), and more particularly to a method of resizing an LCD.

2. Description of the Related Art

Liquid crystal displays (LCD) are well known throughout the art. An active matrix LCD includes row and column address lines and corresponding driving circuitry. This type of display is commonly known as an "X-Y active matrix type LCD." The row and column address lines are typically driven from two to four sides of the LCD. That is, the row address lines are driven from one or two sides of the display and the column address lines are driven from one or two of the remaining sides of the display. In the case that two drivers are used for the row or column address lines, the lines are driven from opposing sides and are interdigitated.

The row and column address line driver chips are typically mounted on separate printed circuit boards disposed adjacent to the sides of the display panel and function to interface the driver chips with a central controller for controlling the output of the LCD. A flexible circuit assembly is often used for the driver chips.

FIG. 1 is a perspective view of one typical configuration of a conventional LCD. The LCD illustrated in FIG. 1 includes a display panel **10** and a plurality of flex circuits **11** and **14** that support row drivers **12** and column drivers **13**, respectively. The row and column drivers **12** and **13** supported on the flex circuits **11** and **14** are connected to the individual address lines (row or column) and extend to the edge of the display panel **10**. The flex circuits are typically orthogonal to the plane of the display panel **10** to minimize the additional border area required around the display. Circuit boards **15** and **16** and connectors **17** and **18** interface the driver chips to the central controller.

Another typical configuration for a conventional LCD includes individual driver TABs (tape automated bonding) along each of the sides of the LCD and providing a separate rigid circuit board adjacent each side of the display. Each circuit board interfaces the circuit board with the driver TABs mounted along the corresponding side of the display panel **10**. One such driver TAB is illustrated in FIG. 2. The TAB **20** is mounted along an edge of the display panel **10** with the address lines electrically connected to the output leads **29** of driver TAB **20**. Window **25** is provided so that output lead support **32** may be mounted to the display panel **10** and base portion **21** can be bent orthogonally to the display panel **10**. The base portion **21** includes a plurality of copper input and output traces **31** and **29**, respectively. The driver chip **27** is electrically connected to input and output traces **31** and **29**, respectively. Input traces **31** receive input signals from the central controller via input connector **34**.

The conventional LCDs described above are typically available in various standard sizes. However, an intermediary manufacturer may find it necessary to reduce the size of, or resize, an LCD to conform to the precise specification

requirements of the intended use of the LCD. For example, as illustrated in FIG. 3, the intermediary manufacturer may be required to reduce the size and/or change the aspect ratio of an LCD by physically cutting away the undesired portions **38** of the LCD, while maintaining the integrity of the desired portion **37**. In doing so, the LCD may optionally be converted from landscape mode to portrait mode, or vice versa.

However, resizing an LCD presents many obstacles due to its construction. The display panel **10** is a laminated glass structure, which includes a pair of opposing transparent glass plates sealed peripherally so as to define a planar cavity in which a liquid crystal layer is retained. When cutting the display panel **10** by scribing the glass plates, the lower plate (active plate) may be damaged by compressive stress when the upper plate (passive plate) is separated at the scribe. In addition, large gas bubbles may appear near the cut edge of the display panel **10** prior to sealing the cut edge, making the LCD unusable.

Further, a method of cutting the associated TABs, flex circuits and/or circuit boards described above is required. That is, a method is needed to remove undesired portions, while maintaining the integrity of the desired portions of the associated TABs, flex circuits and/or circuit boards such that their final size corresponds to the desired size of the display panel.

SUMMARY OF THE INVENTION

It is therefore an object of the present invention to provide a method of resizing an LCD while maintaining the integrity of all remaining desired portions of the LCD.

It is another object of the present invention to provide a method of resizing a display panel of the LCD without damaging the active plate of the display panel.

It is still another object of the present invention to provide a method for repairing the cut edge by replacing accumulated gas bubbles with liquid crystal material.

It is still another object of the present invention to provide a method for sealing the cut edge of the display panel, which allows gas bubbles to escape from the seal region into the sealing adhesive.

It is yet another object of the present invention to provide a method for removing undesired portions of any associated TABs, flex circuits and/or circuit boards, while maintaining the integrity of the desired portions corresponding to the desired size of the display panel.

To achieve the above objects, provided in accordance with the present invention is a method of resizing a liquid crystal display (LCD). The method includes the steps of first determining a desired size for the LCD, thereby identifying an undesired portion of the LCD. Any tape automated bonding strips (TABs) corresponding to the undesired portions of the LCD are then removed. Any flex circuits, or portion thereof, corresponding to the undesired portion of the LCD are cut and removed. Any circuit boards, or portions thereof, corresponding to the undesired portion of the LCD are cut and removed. The display panel is cut to remove a portion of the display panel corresponding to the undesired portion of the LCD. Finally, the cut edge of the display panel is sealed.

BRIEF DESCRIPTION OF THE DRAWINGS

The above objects, features, and advantages of the present invention will become more apparent in light of the following detailed description of exemplary embodiments thereof taken in conjunction with the attached drawings in which:

FIG. 1 is a perspective view of a conventional LCD utilizing flex circuits and circuit boards;

FIG. 2 illustrates a conventional TAB which may optionally be utilized in a conventional LCD;

FIG. 3 illustrates an overall view of resizing an LCD in accordance with the present invention;

FIG. 4 is a flow chart illustrating a general procedure for resizing an LCD in accordance with the present invention;

FIGS. 4A, 5 and 6 illustrate the procedure of FIG. 4 on an LCD in accordance with the present invention;

FIGS. 7 and 8 illustrate a method for resizing a display panel in accordance with the present invention;

FIGS. 9–12 illustrate a method of sealing a panel assembly in accordance with the present invention; and

FIG. 13 illustrates a method of cutting a flex circuit in accordance with the present invention.

DESCRIPTION OF THE INVENTION

Turning again to the drawings, in which like reference numerals identify similar or identical elements throughout the several views, the present invention provides a method of reducing, or resizing, an oversized LCD to conform to size constraints. Referring again to FIG. 3, an overall size of the LCD is reduced to a desired size 37 by removing an undesired portion 38. In some cases, the aspect (width vs. height) of the LCD may change from landscape (aspect>1) to portrait (aspect<1) or may become square (aspect=1).

FIG. 4 outlines an overall procedure for resizing an LCD. In Step 40, the polarizer (and compensator) films are removed from the top and bottom substrates in the area to be cut. In step 41, the TABs, flex circuit and/or circuit board are cut and the undesired portions are removed. The display panel is then cut in step 42, and the cut side is examined for damage and resulting gas bubbles. If gas bubbles are detected, the edge is repaired in step 46. The cut edge is then sealed with an adhesive in step 48. Each step in the procedure of FIG. 4 is further detailed hereinbelow.

FIG. 4A further details step 40. The films are removed from the front and back surfaces in the undesired portion 43 so that the cutting tool can directly contact the glass substrates along the cutting path 45. This ensures a repeatable, high quality scribe mark. In some cases, all of the film may be removed from both substrates. This may be done, for example, to replace the existing films with new films, which will further enhance the optical and/or environmental performance of the resized LCD.

FIGS. 5–6 further detail step 40. FIG. 5 illustrates a top view of an LCD to be resized, which includes a display panel 50, a plurality of TABs 52, a row driver board 54 and a column driver board 56.

In FIG. 6, the undesired portion of the LCD is represented. Here, the undesired portion 60 of the display panel 50, the corresponding TAB 62 and the undesired portion 66 of the column driver board 56, which corresponds to TAB 62, are illustrated. TAB 62 is removed from the display panel 50 using any suitable means, for example, using a heat bar, a hot knife, a cold knife or simply by peeling TAB 62 away by hand. Using a hot knife is currently the best-known method for removing TAB 62. Here, the TAB 62 removed directly corresponds to the column address lines present in the undesired portion 60 of the display panel 50.

The column driver circuit board 56 is correspondingly reduced in size using any suitable means, such as performing an end mill, as is typically utilized in the printed circuit board industry. Special care must be taken to avoid damag-

ing needed traces that serve the last active TAB 68. Therefore, the circuit board must first be examined and the location of the traces serving the last active TAB 68 must be noted. The column driver board 56 is then carefully cut, removing undesired portion 66, while making sure to maintain the integrity of the noted traces serving the last active TAB 68. Once a proper cutting pattern has been identified, all similarly manufactured column boards may be cut using the same pattern. Additionally, mechanical fixtures may be used to aid in the aforementioned processes, to increase both precision and yield, as well as the processes described hereinafter.

A functional test of the LCD may preferably be conducted to ensure that the remaining desired portions of the LCD are completely functional in order to avoid unnecessary expenditures on a permanently damaged assembly.

The procedure outlined above may be used for removing multiple TABs 62. Additionally, while a method of removing a columnar portion of the LCD has been described, a row or horizontal portion may similarly be removed along with the corresponding TABs 62 and corresponding portion of the row driver circuit board 54. Likewise, both a columnar and horizontal portion of the LCD may be removed.

However, where an LCD contains interdigitated row address lines, which are supplied from both opposing sides (right and left), a columnar portion may not be removed without reducing the density of the display. Likewise, where an LCD contains interdigitated column address lines, which are supplied from both opposing sides (top and bottom), a horizontal portion may not be removed without reducing the density of the display.

Another step in the resizing of the LCD involves resizing the display panel 50. A procedure for reducing the size of the display panel, as represented by step 42 of FIG. 4, begins with identifying the undesired portion 50 of the display as shown in FIG. 6. Once the undesired portion has been identified and the TABs are removed as described above, the polarizers 72 and 74 are removed from the display panel as shown in FIG. 7. The display panel 50 will typically be a plate assembly 70, a front polarizer 72 and rear polarizer 74. The front and rear polarizers 72 and 74 may be removed from the entire display panel, or only the section to be removed. In some cases, the polarizers 72 and 74 may be laminated to other films, such as compensation films. For the purposes of brevity, polarizers 72 and 74 are assemblies, which may include various laminates.

In all cases, proper electrostatic discharge (ESD) procedures must be followed to avoid damaging the voltage sensitive devices within the display panel or within the row and column assemblies. This is especially true when removing the adhesive-backed films from the glass substrates. As is well known in the art, removing tape from a surface leads to an effect called tribocharging. When two materials are brought into close contact and separated, a transfer of electrons occurs between them. The materials acquire opposite charges, and in the case of non-conductors, the charge imbalance stays localized on the surface at the point of separation. Since both the film and glass substrate are non-conductors, ESD must be controlled by using ionizers, regulating the speed of the separation process and controlling the relative humidity.

Referring to FIG. 8, the plate assembly 70 comprises active plate 82 and passive plate 80, which enclose the liquid crystal material 81. The passive plate 80 and the active plate 82 are each scribed, creating scribes 84 and 86, the closest of which is offset from an active area of the display panel by

a first offset distance **87**, preferably 3 mm or greater. The active area is the portion of the resized LCD that is functional for display purposes. The first offset functions to minimize migration of the edge seal adhesive into the active area, thereby causing degradation in optical performance. In the preferred embodiment, scribes **84** and **86** are offset by a second offset distance **88**, which is preferably 1–2mm. The purpose for the second offset **88** is to provide ample area for the sealing operation. Either the active plate **82** or the passive plate **80** may contain the additional surface area, to allow ample area for the adhesive. In any case, it is preferable to have an overall offset (first offset **87** plus second offset **88**) of at least 5 mm. In the preferred embodiment shown in FIG. **8**, the passive plate **80** overhangs the active plate **82** in order to protect the active plate from being exposed to potential sources of damage prior to edge sealing. The offset **88** further serves to prevent short circuits in the desired portion of the active plate **82** resulting from compressive stress induced on the active plate **82** when the passive plate **80** is broken at scribe **86**.

Next, the plate assembly **70** is broken at each scribe **84**, **86**. In a preferred embodiment, the passive plate **80** is broken first to further protect the integrity of the active plate **82**. An angular displacement of approximately 1° is required to break the plate assembly **70** along each scribe **84**, **86**.

Referring to FIG. **11**, the panel assembly **70** may then be inspected along cut side **110** for damage or gas bubbles **112** resulting from the break. The gas bubbles may then be eliminated by positioning the cut edge **110** oblique or vertical, as illustrated in FIG. **12**. Some liquid crystal material **120** is applied to edge **110** while the vertical orientation of the panel assembly **70** is maintained. Here, the liquid crystal may be doped or undoped material. Preferably, the liquid crystal is doped to match the liquid crystal of the raw panel. The panel assembly **70**, still oblique or vertical, is placed in a vacuum to allow the gas bubbles to escape from the cut edge **110**. Once the gas bubbles have escaped, the liquid crystal **120** added will fill the void created, thereby replacing the gas bubbles **112** with liquid crystal **120**. This process may be facilitated by optionally preheating the plate assembly **70** prior to placing it in the vacuum.

Referring to FIG. **9**, a method of sealing the panel assembly **70** is illustrated, as represented by step **48** of FIG. **4**. The panel assembly is sealed by applying an adhesive **90** to the cut edge **110**. Many suitable adhesives may be used, including UV (ultraviolet), air, and heat cured adhesives. In a preferred embodiment, a UV cured adhesive is used. The panel assembly **70** is tilted to a small angle **92** to raise the sealed region. The tilt allows any remaining gas bubbles **112** to escape into the adhesive **90**, where they may safely reside without seriously compromising the effectiveness of the seal. The edge **110** does not have to be cleaned prior to applying adhesive **90**, since any residual liquid crystal material **81** will dissolve into the adhesive **90**. After the adhesive **90** has been properly applied, it is cured using methods appropriate for the adhesive type, and commonly known in the art.

FIG. **10** illustrates the preferred embodiment of a sealed panel assembly **70**.

Referring now to FIG. **13**, a flex circuit **138** is illustrated, as represented by step **40** of FIG. **4**. The flex circuit **138** is interposed between the display panel **50** and a circuit board **56**. The flex circuit **138** includes driver chip **132**, input traces **136**, and output traces **134**. The input traces **136** transfer electrical signals from the circuit board **56** to the driver chip **132**, and may not be cut or damaged. The output traces **134**

correspond to the address lines served by the driver chip **132** for the corresponding portion of the display panel **50**. Some of the output traces **134** may drive address lines in the undesired portion **60** of the display panel **50**. In such a case, the output traces **134** and the corresponding portion of the flex circuit **138** may be cut and discarded.

The flex circuit is carefully examined to determine which of the output traces **134** are no longer needed. The number of output traces **134** typically outnumbers the number of input traces **136**. Therefore, all the input traces **136** are typically gathered on the side of the driver chip facing the circuit board **56**, while the output traces **134** are typically found on all sides of the driver chip **132**. Next, an optical axis **130** of the cut line must be determined such that only output traces **134** no longer required are cut, without damaging the remaining output traces **134** or any of the input traces **136**. The cut then is made using a sharp edge. An X-acto knife is preferably used to make the cut. Once again, proper ESD procedures are preferably employed.

In a case where the polarizers are removed prior to resizing, new films are laminated to the display at this time. The lamination and orientation of the polarizers are well known in the art.

Accordingly, using the procedure outlined in FIG. **4** and further detailed above, a novel method of resizing an LCD is disclosed.

While the present invention has been described in detail with reference to the preferred embodiments, they represent mere exemplary applications. Thus, it is to be clearly understood that many variations may be made by anyone having ordinary skill in the art while staying within the spirit and scope of the present invention as defined by the appended claims.

What is claimed is:

1. A method of resizing a liquid crystal display (LCD), comprising the steps of:
 - determining a desired new active area size for the LCD, thereby identifying an undesired portion of the LCD; and
 - cutting and removing any tape automated bonding strips (TABs), flex circuits), circuit boards or portions thereof, corresponding to the undesired portion of the LCD;
 - removing all attached polarizing and/or compensating films from the LCD;
 - cutting a display panel to remove a portion of the display panel corresponding to the undesired portion of the LCD, said cutting step comprising
 - determining a first offset distance from the new active area,
 - scribing an active plate of said LCD at the first offset distance,
 - determining a second offset distance from said first offset distance,
 - scribing a passive plate of said LCD at the second offset distance,
 - applying an angular displacement to first break the passive plate of said LCD, and
 - continuing to apply said angular displacement to next break the active plate of said LCD;
 - inspecting a cut edge of said display panel:
 - repairing, if necessary, the cut edge of the display panel;
 - sealing the cut edge with adhesive; and
 - laminating new compensator and/or polarizer films to said LCD.

7

2. The method recited in claim 1, wherein the step of repairing the cut edge of the display panel further comprises the steps of:

- placing a panel assembly in a vertical orientation with said cut edge on top;
- placing the panel assembly in a vacuum;
- allowing gas bubbles to escape from the cut edge;
- applying additional liquid crystal material to the cut edge; and
- removing the panel assembly from the vacuum.

3. The method recited in claim 1, wherein the step of sealing the cut edge with adhesive further comprises the steps of:

- applying adhesive to the cut edge, thereby creating a sealed region;
- raising the sealed region by tilting the display panel to a predetermined angle;
- allowing any remaining gas bubbles to escape into the adhesive; and
- curing the adhesive.

4. The method recited in claim 1, wherein:

both a columnar and a horizontal portion of the LCD are removed.

5. A method of resizing a liquid crystal display (LCD), comprising the steps of:

- determining a desired size for the LCD, thereby identifying an undesired portion of the LCD;
- removing any tape automated bonding strips (TABs) corresponding to the undesired portions of the LCD;
- removing any flex circuits, or portions thereof, corresponding to the undesired portion of the LCD;
- removing any circuit boards or portions thereof, corresponding to the undesired portion of the LCD; and
- cutting a display panel to remove a portion of the display panel corresponding to the undesired portion of the LCD, wherein cutting the display comprises the further steps of;

8

removing any attached polarizers from the display panel in an area to be cut;

scribing an active plate and a passive plate of the display panel; and

breaking the active plate and the passive plate by applying an angular displacement of approximately 1° to each of the active plate and the passive plate, leaving a cut edge.

6. The method recited in claim 5, wherein the closer of the active plate scribe and the passive plate scribe to an active area of the display panel is at a first offset distance from the active area of the display panel, and the active plate scribe is offset by a second offset distance from the passive plate scribe.

7. The method recited in claim 6, wherein said second offset distance increases the size of the passive plate over the active plate.

8. The method recited in claim 6, wherein said second offset distance increases the size of the active plate over the passive plate.

9. The method recited in claim 6, comprising the additional step of sealing the cut edge by applying a sealing adhesive thereto.

10. The method recited in claim 9, wherein the sealing adhesive is selected from the group consisting of ultraviolet cured sealing adhesive, heat cured sealing adhesive and air cured sealing adhesive.

11. The method recited in claim 9, wherein the cut edge is placed at an angle during application and curing of the sealing adhesive to allow gas to escape into the sealing adhesive.

12. The method recited in claim 5, wherein the passive plate is broken first to minimize damage to the active plate.

* * * * *

专利名称(译)	调整液晶显示器尺寸的方法		
公开(公告)号	US6509949	公开(公告)日	2003-01-21
申请号	US09/696441	申请日	2000-10-25
[标]申请(专利权)人(译)	霍尼韦尔国际公司		
申请(专利权)人(译)	HONEYWELL INTERNATIONAL INC.		
当前申请(专利权)人(译)	HONEYWELL INTERNATIONAL INC.		
[标]发明人	LU KANGHUA SACCOMANNO ROBERT J WELCH RON THOMPSON GLEN MERLE MARRON THOMAS P		
发明人	LU, KANGHUA SACCOMANNO, ROBERT J. WELCH, RON THOMPSON, GLEN MERLE MARRON, THOMAS P.		
IPC分类号	G02F1/13 G02F1/1333 G02F1/133		
CPC分类号	G02F1/1333 G02F1/13351		
助理审查员(译)	阮HOAN		
外部链接	Espacenet USPTO		

摘要(译)

调整液晶显示器 (LCD) 尺寸的方法包括首先确定LCD的所需尺寸，从而识别LCD的不需要部分的步骤。然后移除对应于LCD的不期望部分的任何带式自动键合带 (TAB)。切割和去除对应于LCD的不期望部分的任何柔性电路或其部分。切割和去除对应于LCD的不期望部分的任何电路板或其部分。切割显示面板以去除对应于LCD的不期望部分的显示面板的一部分。最后，密封显示面板的切割边缘。

