

FIG. 1

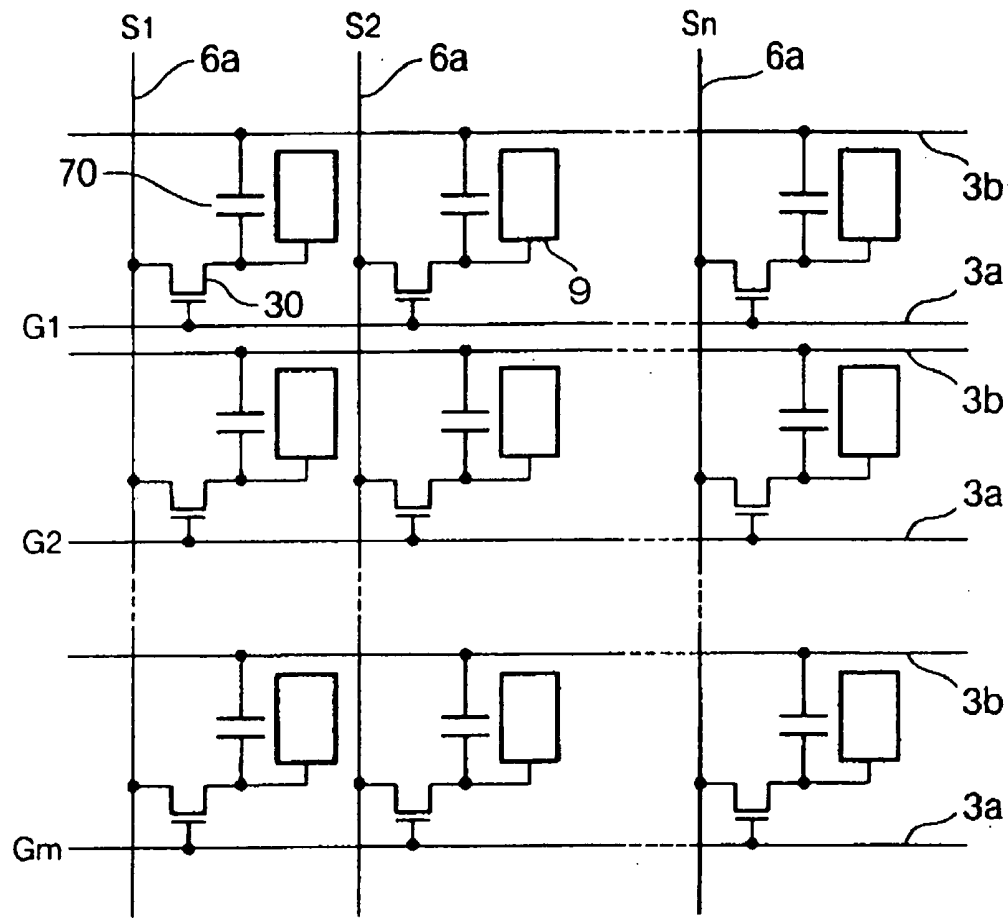


FIG. 2

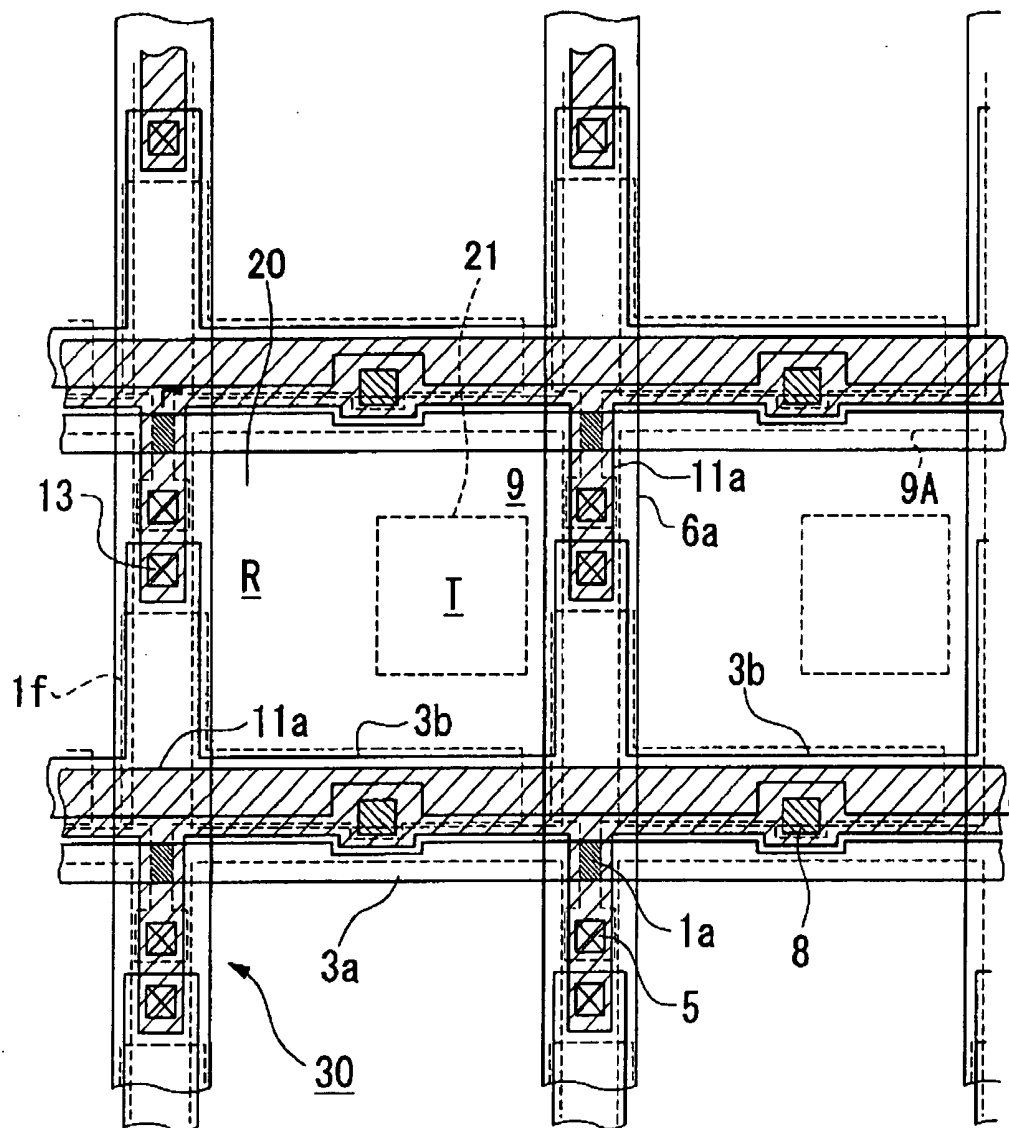


FIG. 3A

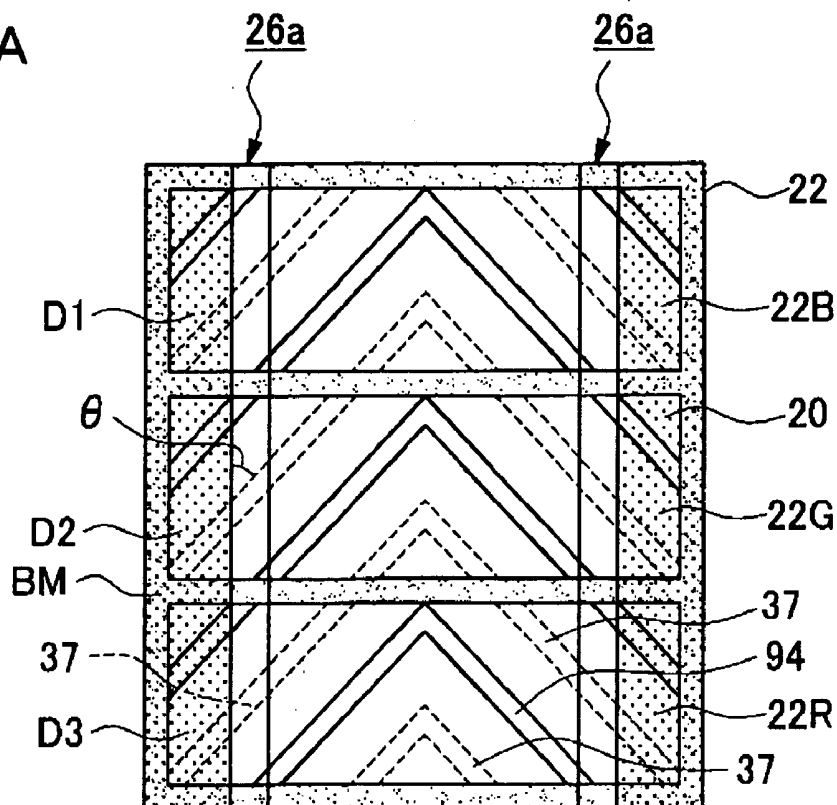


FIG. 3B

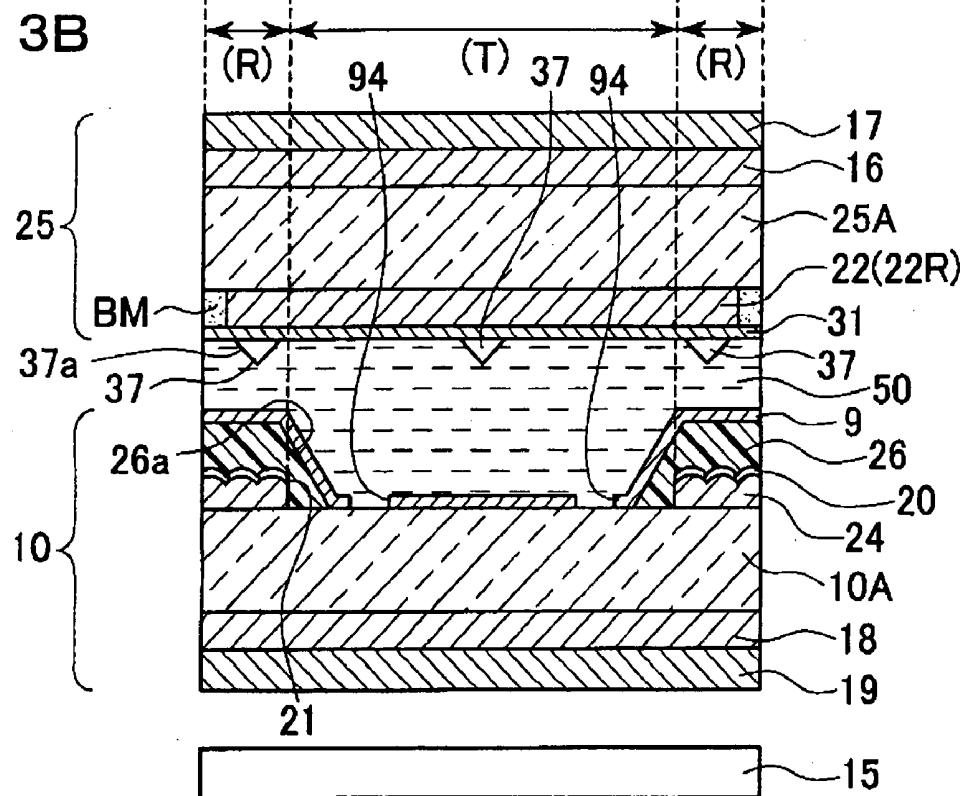


FIG. 4

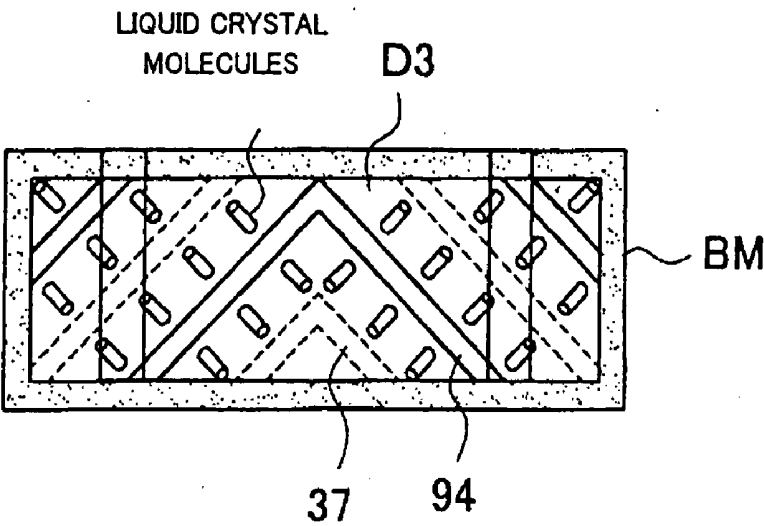


FIG. 5A

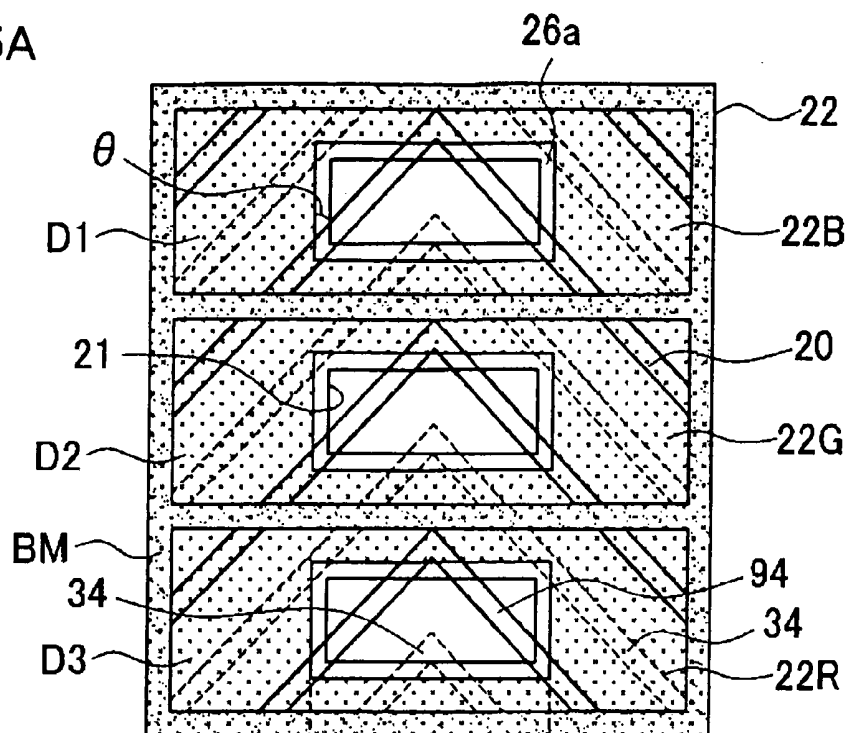


FIG. 5B

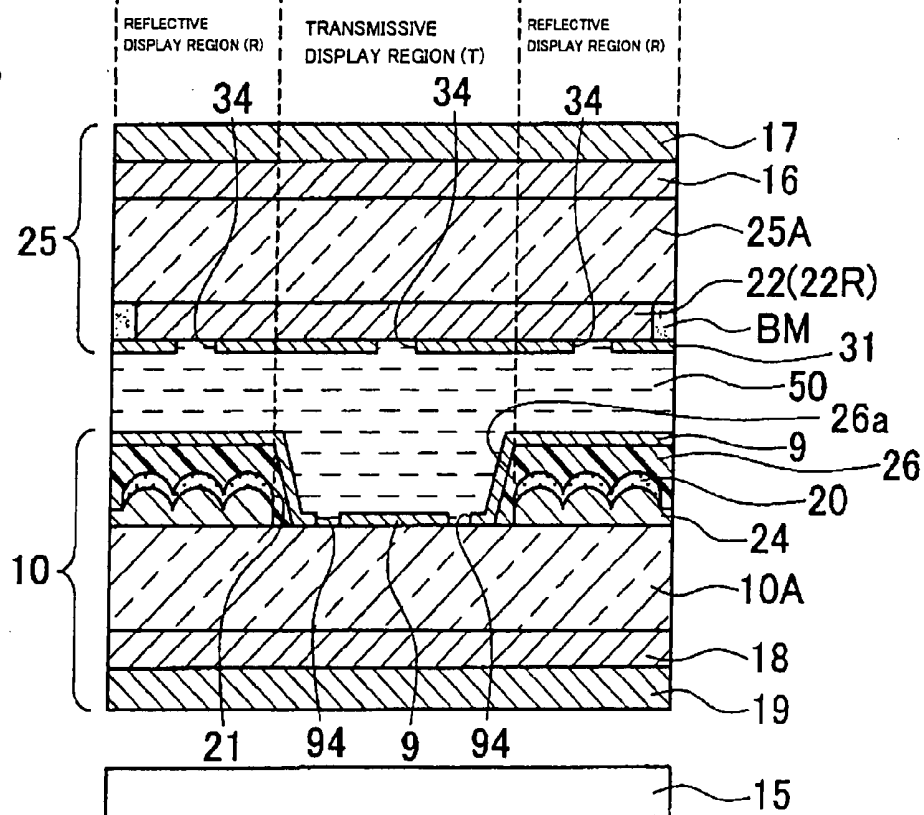


FIG. 6A

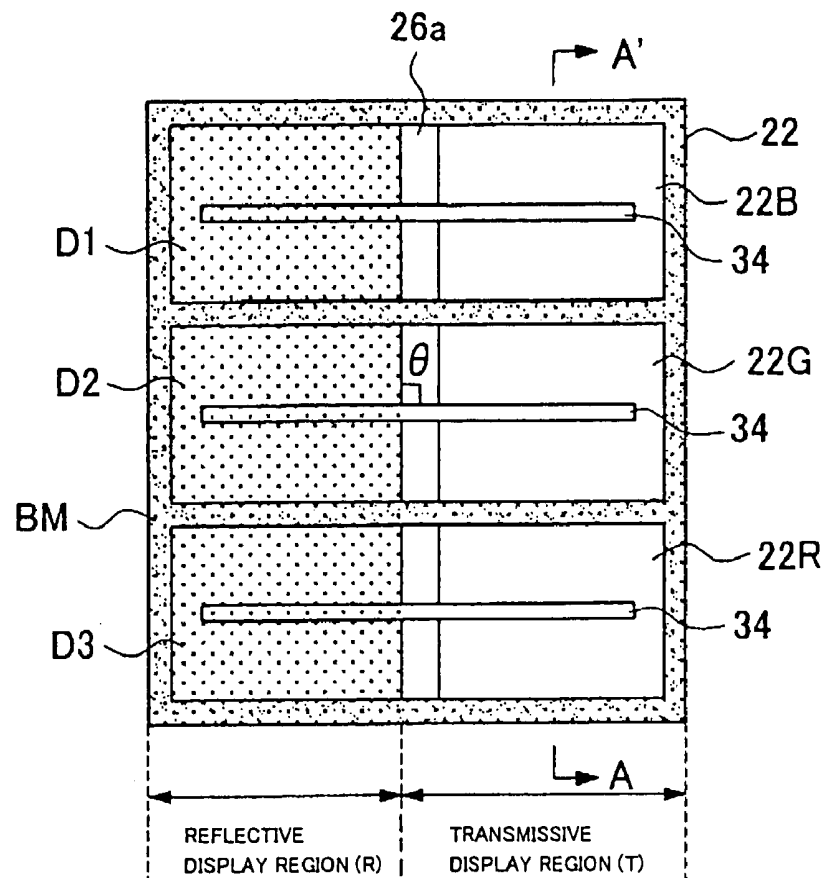


FIG. 6B

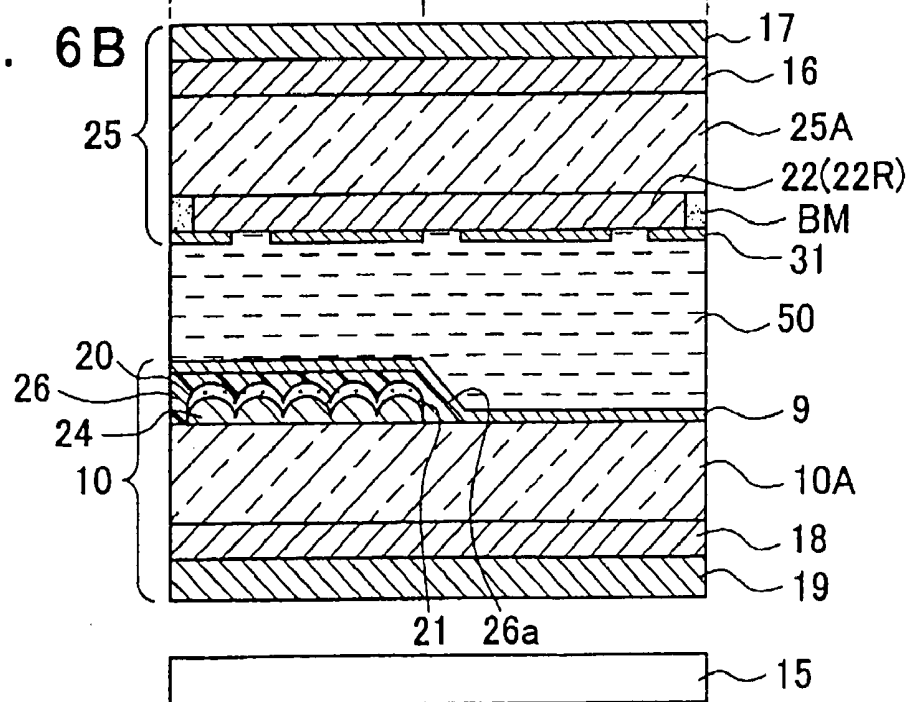


FIG. 7

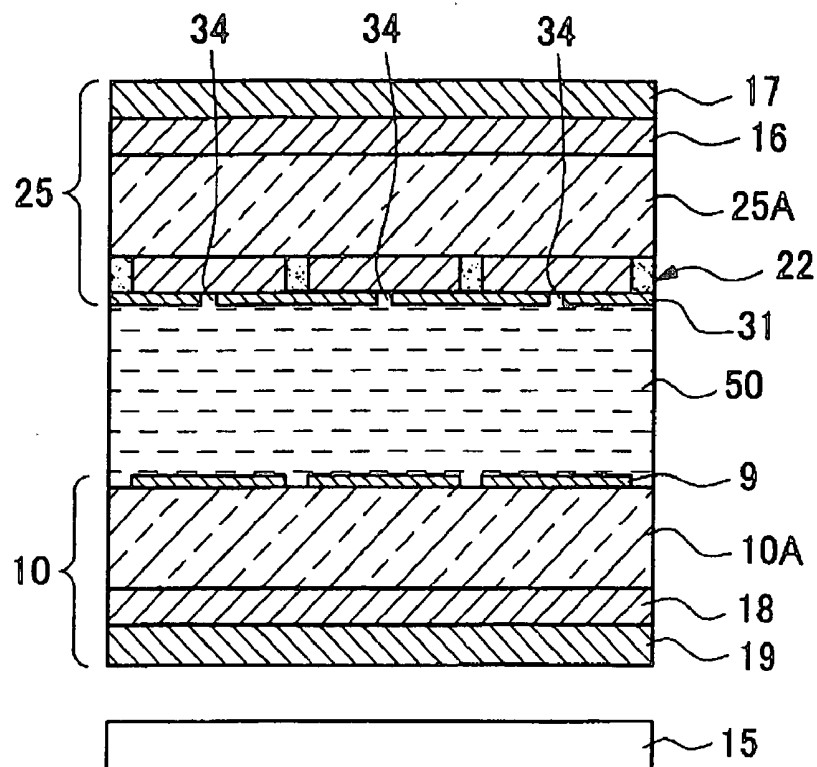
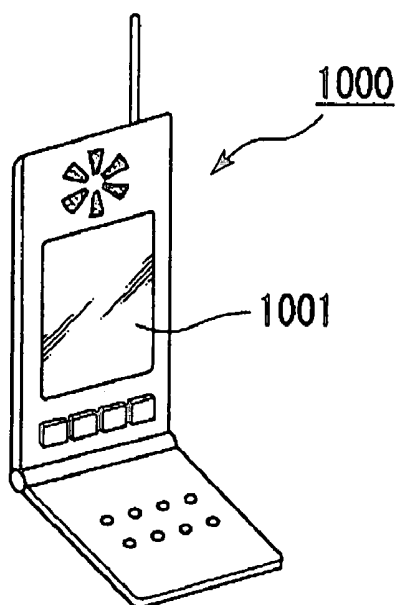


FIG. 8



LIQUID CRYSTAL DISPLAY DEVICE AND ELECTRONIC APPARATUS

BACKGROUND OF THE INVENTION

[0001] 1. Field of Invention

[0002] The present invention relates to a liquid crystal display device and an electronic apparatus. More specifically, the invention relates to obtaining a display having a high contrast and a wide viewing angle in a transmissive liquid crystal display device in which display is performed in both a reflective mode and a transmissive mode.

[0003] 2. Description of Related Art

[0004] A related art liquid crystal display device includes a transmissive liquid crystal display device that provides a display that is visible using external light, similarly to a reflective liquid crystal display device, in a bright place. The transmissive liquid crystal display device also provides a display that uses a backlight, similarly to the transmissive liquid crystal display device, in a dark place. Such a related art transmissive liquid crystal display device includes a liquid crystal display device in which a liquid crystal layer is interposed between an upper substrate and a lower substrate, a reflective film obtained by forming windows to transmit light in a metal film made of, for example, aluminum is provided on the inner face of a lower substrate, and the reflective film is then allowed to serve as a transmissive plate. In this case, in the reflective mode, the external light incident from the upper substrate side passes through the liquid crystal layer, is reflected by the reflective film at the inner surface of the lower substrate, passes through the liquid crystal layer again, and is emitted from the upper substrate side, thereby contributing to the display. On the other hand, in the transmissive mode, light from a backlight incident from the lower substrate side passes through the liquid crystal layer from the windows of the reflective film and is emitted from the upper substrate side to the outside, thereby contributing to the display. Therefore, the area in which the windows are formed in an area in which the reflective film is formed become the transmissive display region, and the areas other than transmissive display region become the reflective display region.

[0005] However, the related art transmissive liquid crystal display device is subject to a problem in that the viewing angle in the transmissive display is narrow. This is because a transmissive plate is provided at an inner surface of a liquid crystal cell so as not to generate parallaxes, and thus there is a restriction that the reflective display should be performed using only one polarizer provided on the observer side. Therefore, the degree of freedom in the optical design is small. Therefore, in order to address or solve the above problem, a related art liquid crystal display device uses a vertically aligned liquid crystal, which is disclosed in "Development of transmissive LCD for high contrast and wide viewing angle by using homeotropic alignment", M. Jisaki et al., Asia Display/IDW'01, pp. 133-136 (2001), (hereinafter "Jisaki et al."). Three features thereof are as follows:

[0006] (1) A "VA (Vertical Alignment) mode" is employed in which a liquid crystal with a negative dielectric anisotropy is aligned vertically at the substrate, and then it falls down by applying a voltage.

[0007] (2) A "multi-gap structure" is employed in which the thicknesses of the liquid crystal layer in the transmissive display region and the reflective display region are different from each other (for this feature, see, for example, Japanese Unexamined Patent Application Publication No. 11-242226).

[0008] (3) The transmissive display regions are formed as regular octagons, and protrusions are provided at the centers of the transmissive display region on the counter substrate such that the liquid crystal molecules fall down in eight directions in those areas. That is, a so-called "alignment division structure" is employed.

SUMMARY OF THE INVENTION

[0009] The multi-gap structure as disclosed in Japanese Unexamined Patent Application Publication No. 11-242226 is useful to adjust the electro-optical characteristics (transmissivity-voltage characteristic and reflectivity-voltage characteristic) in the transmissive display region and the reflective display region. This is because light passes through the liquid crystal layer only one time in the transmissive display region, while light passes through the liquid crystal layer twice in the reflective display region.

[0010] On the other hand, the alignment division method employed by Jisaki et al. is an elegant technique using protrusions and step difference of a multi gap. However, this method has two serious problems. One problem is that if the distance between protrusions provided at the centers of the transmissive display regions and stepped portions of a multi gap is a predetermined value or more, the liquid crystal molecules do not fall down in the predetermined directions when a voltage is applied. Therefore, the octagons of the transmissive display region should be sufficiently small. The other problem is that the falling-down directions of the liquid crystal molecules in the reflective display region are not sufficiently controlled. When liquid crystal molecules fall down in disordered directions, disclinations occur at the boundary of other liquid crystal alignment areas to cause afterimages, etc. Further, since the respective alignment areas of the liquid crystal have different visual characteristics, when viewing the liquid crystal display device from an oblique direction, there may be a problem in that unevenness of displaying is observed.

[0011] The present invention addresses or solves the above, and provides, in a transmissive liquid crystal display device, a liquid crystal display device capable of reducing or suppressing the occurrence of display defects such as afterimages or spot-shaped stains, in both transmissive display and reflective display, and realizing a bright display having a wide viewing angle.

[0012] In order to address or accomplish the above, the present invention provides a liquid crystal display device in which a liquid crystal layer is interposed between a pair of substrates, and a transmissive display region for transmissive display and a reflective display region for reflective display are provided in one dot region. The liquid crystal layer is formed of liquid crystal with a negative dielectric anisotropy whose initial alignment state represents is a vertical alignment, electrodes to drive the liquid crystal are formed on the pair of substrates on the liquid crystal layer side, respectively, and the electrode of at least one of the substrates is provided with slit-shaped openings formed by making a longitudinal opening in part of the electrode,

and/or longitudinal convex portions made of a dielectric substance formed on the electrode, as an alignment regulating device to regulate the alignment of the liquid crystal. A thickness-adjusting layer of the liquid crystal layer to allow the thickness of the liquid crystal layer in the transmissive display region to be larger than the thickness of the liquid crystal layer in the reflective display region is formed between at least one of the pair of substrates and the liquid crystal layer, and the thickness-adjusting layer of the liquid crystal layer has an inclined plane at the vicinity of the boundary between the transmissive display region and the reflective display region so that the layer thickness thereof varies continuously. The longitudinal direction of the openings and/or the convex portions and the longitudinal direction of the inclined plane of the thickness-adjusting layer of the liquid crystal layer are arranged to intersect each other as viewed in plan view. In this case, "to intersect each other as viewed in plan view" means to intersect each other as viewed in the normal direction of the substrate

[0013] Related art methods of regulating a falling-down direction of liquid crystal molecules for the vertically aligned liquid crystal molecules when a voltage is applied include, "a method by use of slits", "a method by use of protrusions", and "a method by use of stepped portions." In the "method by use of slits", elongated openings (slits) are formed in an electrode to generate a tilted electric field. In the "method by use of protrusions", convex portions having inclined planes are formed on an electrode to align some liquid crystal molecules in an oblique direction. In the "method by use of stepped portions", stepped portions are formed under an electrode to align liquid crystal molecules in an oblique direction, and to generate a tilted electric field so as to align the liquid crystal molecules in the oblique direction. The "method by use of slits" and the "method by use of protrusions" have different operations, but functions similar to each other. However, the "method by use of stepped portions" has an alignment regulating force remarkably weaker than the "method by use of slits" and the "method by use of protrusions". This is because the alignment direction of liquid crystal molecules and the direction of electric field in the stepped portions are all inclined in a direction perpendicular to the inclination of the stepped portions.

[0014] Under those circumstances, in the present invention as described above, the longitudinal direction of the inclined plane of the thickness-adjusting layer of the liquid crystal layer as the stepped portion, and the longitudinal direction of the openings (slits) and/or the convex portions (protrusions) as the alignment regulating means are arranged to intersect each other as viewed in plan view. Thus, the falling-down direction of liquid crystal molecules is almost not influenced by the inclined plane of the thickness-adjusting layer of the liquid crystal layer as the stepped portion, but regulated mainly by the openings and/or the convex portions. That is, in the present invention, the alignment regulation by the thickness-adjusting layer of the liquid crystal layer is cancelled by the alignment regulation by the openings and/or the convex portions. Thus, it is difficult to generate the defects that liquid crystal molecules fall down in disordered directions, so that the falling-down direction of liquid crystal molecules is highly regulated by the openings and/or the convex portions. As a result, it is difficult for a disclination to occur when a voltage is applied between electrodes, so that it is possible to reduce or suppress the

occurrence of display defects, such as afterimages. In addition, defects such as unevenness of displaying visualized when viewing the display surface from the oblique direction hardly occur.

[0015] By allowing the longitudinal direction of the inclined plane of the thickness-adjusting layer of the liquid crystal layer and the longitudinal direction of the openings and/or the convex portions to intersect each other as viewed in plan view, the openings and/or the convex portions extending longitudinally are formed over at least the reflective display region and the transmissive display region. Therefore, it is preferable that the longitudinal direction of the openings and/or the convex portions intersects the longitudinal direction of the inclined plane of the thickness-adjusting layer of the liquid crystal layer so as to form an angle of 30° to 90° as viewed in plan view from a normal direction of the substrate. When the intersecting angle is less than 30°, the influence of alignment regulation by the inclined plane of the thickness-adjusting layer of the liquid crystal layer occurs, so that alignment failure of the liquid crystal molecules may occur in the vicinity of the intersections.

[0016] The inclined plane and the plane of the substrate may form an angle of 2° to 30°. When the angle is less than 2°, the area of the inclined plane required to adjust a thickness of the liquid crystal layer become excessively large, resulting in an decrease in transmissivity and reflectivity. On the contrary, when the angle is more than 30°, the alignment regulating force of the inclined plane to liquid crystal molecules may be increased, resulting in a negative influence on the alignment regulation of the liquid crystal molecules by the openings and/or the convex portions, and thus causing the alignment failure.

[0017] In the liquid crystal display device according to the present invention, the pair of substrates include an upper substrate and a lower substrate, a backlight for transmissive display is provided on the lower substrate opposite to the liquid crystal layer side, and a reflective film selectively formed in the reflective display region is interposed between the lower substrate and the liquid crystal layer. In this case, it is possible to more surely realize the transmissive display and the reflective display.

[0018] Further, in the present invention, since the thickness of the liquid crystal layer in the reflective display region is less than the thickness of the liquid crystal layer in the transmissive display region due to existence of the thickness-adjusting layer of the liquid crystal layer, retardation in the reflective display region and retardation in the transmissive display region can be sufficiently close to each other or can be almost equal each other, thereby accomplishing an enhancement of contrast.

[0019] Furthermore, in the present invention, the alignment regulating device has a construction to regulate a falling-down direction of the vertically aligned liquid crystal molecules in accordance with the variation in an electric field. In this case, it is possible to allow the vertically aligned liquid crystal molecules to fall down regularly in a predetermined direction. As a result, it is difficult that alignment disorder (disclination) of the liquid crystal molecules occurs, so that it is possible to avoid the display failure, such as light leakage, and to provide a liquid crystal display device having a high display property. Furthermore, when the

convex portions are specifically formed as an construction for regulating the falling-down direction of liquid crystal molecules, the surfaces of the convex portions may be constructed to be inclined by a predetermined angle from the vertical alignment direction of the liquid crystal molecules.

[0020] An electronic apparatus according to the present invention includes the aforementioned liquid crystal display device. According to this electronic apparatus, display failure, such as afterimages or spot-shaped stains, can be reduced or suppressed, and it is possible to provide an electronic apparatus including a display unit, which has a high brightness and has a wide viewing angle.

BRIEF DESCRIPTION OF THE DRAWINGS

[0021] FIG. 1 is a schematic circuit diagram of a liquid crystal display device according to a first exemplary embodiment of the present invention;

[0022] FIG. 2 is a plan view illustrating the structure of dots in the liquid crystal display device according to the first exemplary embodiment of the present invention;

[0023] FIGS. 3A and 3B are a schematic plan view and a schematic cross-sectional view illustrating significant parts of the liquid crystal display device according to the first exemplary embodiment of the present invention;

[0024] FIG. 4 is a schematic illustrating the operation of the liquid crystal display device according to the first exemplary embodiment of the present invention;

[0025] FIGS. 5A and 5B are a schematic plan view and a schematic cross-sectional view illustrating significant parts of a liquid crystal display device according to a second exemplary embodiment;

[0026] FIGS. 6A and 6B are a schematic plan view and a schematic cross-sectional view illustrating significant parts of a liquid crystal display device according to a third exemplary embodiment;

[0027] FIG. 7 is a schematic illustrating a cross-sectional view taken along plane A-A' of FIG. 6A; and

[0028] FIG. 8 is a perspective view illustrating an example of an electronic apparatus according to the present invention.

DETAILED DESCRIPTION OF PREFERRED EMBODIMENTS

[0029] [First Exemplary Embodiment]

[0030] A first exemplary embodiment of the present invention is described below with reference to the drawings.

[0031] A liquid crystal display device of this exemplary embodiment is an example of an active matrix liquid crystal display device employing thin film transistors (hereinafter "TFTs") as switching elements.

[0032] FIG. 1 is a schematic circuit diagram of a plurality of dots arranged in a matrix and constituting an image display region of the liquid crystal display device according to this embodiment, FIG. 2 is a plan view illustrating the structure of the plurality of dots adjacent to each other on a TFT array substrate, and FIGS. 3A and 3B are a schematic plan view (upper part) and a schematic cross-sectional view (lower part) illustrating the structure of the liquid crystal

display device. In the following drawings, in order to make the respective layers or the respective members recognizable on the drawings, the respective layers and respective members have different scales.

[0033] As shown in FIG. 1, in the liquid crystal display device of this exemplary embodiment, pixel electrodes 9 and TFTs 30 functioning as switching elements to control the pixel electrodes 9 are respectively formed in a plurality of dots arranged in a matrix and constituting an image display region, and data lines 6a to which image signals are supplied are electrically connected to sources of the TFTs 30. Image signals S1, S2, . . . , and Sn to be written to the data lines 6a are line-sequentially supplied in that order, or are supplied to a plurality of data lines 6a adjacent to each other in units of groups. Further, scanning lines 3a are electrically connected to gates of the TFTs 30, and scanning signals G1, G2, . . . , and Gm are line-sequentially supplied in pulses to a plurality of scanning lines 3a at a predetermined timing. The pixel electrodes 9 are electrically connected to drains of the TFTs 30, and by turning on the TFTs 30 functioning as the switching elements for a certain period of time, the image signals S1, S2, . . . , and Sn supplied from the data lines 6a are written at a predetermined timing.

[0034] Predetermined levels of the image signals S1, S2, . . . , and Sn written to the liquid crystal through the pixel electrodes 9 are held between the pixel electrodes and a common electrode, which are described below, for a predetermined period of time. Since the alignment or order of molecular association varies in accordance with the voltage level applied thereto, the liquid crystal modulates light to make gray scale display possible. In order to reduce or prevent the held image signals from leaking, storage capacitors 70 are added in parallel with the liquid crystal capacitor formed between the pixel electrodes 9 and the common electrode. Reference numeral 3b denotes capacitor lines.

[0035] Referring to FIG. 2, the planar structure of the TFT array substrate constituting the liquid crystal display device according to this exemplary embodiment is described below.

[0036] As shown in FIG. 2, on the TFT array substrate, a plurality of rectangular pixel electrodes 9 (whose profiles are shown by dotted lines 9A) are provided in a matrix, and the data lines 6a, the scanning lines 3a, and the capacitor lines 3b are provided along longitudinal and transverse boundaries of the pixel electrodes 9. In this exemplary embodiment, the inside of an area in which a pixel electrode 9, the data lines 6a, the scanning lines 3a, and the capacitor lines 3b, which are arranged to surround the pixel electrode 9, are formed constitutes one dot region, and the respective dot regions arranged in a matrix can perform display.

[0037] The data lines 6a are electrically connected through contact holes 5 to source regions which constitute the TFTs 30 and are described below in a semiconductor layer 1a made of, for example, a polysilicon film, and the pixel electrodes 9 are electrically connected through contact holes 8 to drain regions, which are described below, in the semiconductor layer 1a. In addition, the scanning lines 3a are arranged to face channel regions (areas hatched in the top-left direction in the drawing) in the semiconductor layer 1a, and the portions of the scanning lines 3a facing the channel regions serve as gate electrodes.

[0038] Each capacitor line 3b has a main line portion (that is, as viewed in plan view, a first area formed along the

scanning line **3a**) extending along the scanning line **3a** in a substantially straight line shape, and a protruding portion (that is, as seen in plan view, a second area extending along the data line **6a**) protruding from a place intersecting the data line **6a** toward the previous stage (upward in the drawing) along the data line **6a**.

[0039] In FIG. 2, areas hatched in the top-right direction are provided with a plurality of first light shielding films **11a**.

[0040] More specifically, the first light shielding films **11a** are provided at positions to cover the TFTs **30** including the channel regions of the semiconductor layer **1a**, as seen from the TFT array substrate side. Each of the first light shielding films has a main line portion facing the main line portion of the capacitor line **3b** and extending in a straight line shape along the scanning line **3a**, and a protruding portion protruding from a portion intersecting the data line **6a** toward the subsequent stage (downward in the drawing) along the data line **6a**. The downward protruding portion of the first light shielding film **11a** at each stage (pixel row) overlaps the tip of the upward protruding portion of the capacitor line **3b** at the next stage under the data line **6a**. These overlapping places are provided with contact holes **13** to electrically connect the first light shielding film **11a** to the capacitor line **3b**. That is, in this exemplary embodiment, the first light shielding films **11a** are electrically connected to the capacitor lines **3b** of the previous stage or the subsequent stage through the contact holes **13**.

[0041] As shown in FIG. 2, a reflective film **20** is formed at the center of each dot region. The area in which the reflective film **20** is formed becomes a reflective display region R, and the area in which the reflective film **20** is not formed, that is, the opening **21** of the reflective film **20**, becomes a transmissive display region T.

[0042] Referring to FIGS. 3A and 3B, the structure of the liquid crystal display device according to this exemplary embodiment is described below.

[0043] FIG. 3A is a schematic plan view illustrating the construction of one pixel in the liquid crystal display device according to this exemplary embodiment, and FIG. 3B is a schematic cross-sectional view of a portion corresponding to a red dot in the plan view of the FIG. 3A.

[0044] The liquid crystal display device according to this exemplary embodiment has, as shown in FIG. 2, dot regions formed by providing the pixel electrode **9** inside the area surrounded by the data lines **6a**, the scanning lines **3a**, and the capacitor lines **3b**. In the dot regions, as shown in FIG. 3A, a colored layer of one of three primary colors is provided for each dot region, and a pixel including the respective colored layers **22B** (Blue), **22G** (Green), and **22R** (Red) is formed in three dot regions D1, D2, and D3.

[0045] On the other hand, as shown in FIG. 3B, in the liquid crystal display device according to this exemplary embodiment, a liquid crystal layer **50** made of a liquid crystal material whose initial alignment state is vertical, that is, a liquid crystal material having a negative dielectric anisotropy, is interposed between the TFT array substrate **10** and a counter substrate **25** opposite thereto. The TFT array substrate **10** has a construction in which a reflective film **20** made of a metal film having a high reflectivity such as aluminum, silver, etc., is partially formed on the surface of a substrate body **10A** made of a light-transmissive material

such as quartz, glass, etc., via an insulating film **24**. As described above, the area in which the reflective film **20** is formed becomes the reflective display region R, and the area in which the reflective film **20** is not formed, that is, an opening **21** of the reflective film **20** becomes the transmissive display region T.

[0046] As described above, the liquid crystal display device according to this exemplary embodiment is a vertical alignment liquid crystal display device including a vertical alignment liquid crystal layer, and is also a transmissive liquid crystal display device capable of performing reflective display and transmissive display. Moreover, the surface of the insulating film **24** has an uneven shape, and the surface of the reflective film **20** has an uneven portion reflecting the uneven shape of the insulating film. Since reflected light is scattered by the unevenness, external reflection is prevented, so that it is possible to obtain a display having a wide viewing angle.

[0047] Further, an insulating film **26** is formed on the substrate body **10A**, and is selectively formed to cover the insulating film **24** and the reflective film **20** particularly in the reflective display region R. The insulating film **26** selectively formed in the reflective display region R has an inclined plane **26a** such that the film thickness of the insulating film varies continuously in the vicinity of the boundary between the reflective display region R and the transmissive display region T. Moreover, the reflective film **20** is not formed in the area in which the inclined plane **26a** is formed, and thus the area in which the inclined plane **26a** is formed is included in the transmissive display region T.

[0048] The insulating film **26** is made of an organic film, such as acryl resin having a thickness of about 2 to 3 μm , the thickness of the liquid crystal layer **50** in the transmissive display region T in which the insulating film **26** is not formed is about 4 to 6 μm , and the thickness of the liquid crystal layer **50** in the reflective display region R is about a half of that of the liquid crystal layer **50** in the transmissive display region T.

[0049] In this way, in the liquid crystal display device according to this exemplary embodiment, the liquid crystal layer **50** has a smaller thickness in the reflective display region R than in the transmissive display region T, and the insulating film **26** serves as a thickness-adjusting layer of the liquid crystal layer for making the thickness of the liquid crystal layer **50** different in the reflective display region R and the transmissive display region T by its own film thickness. Due to the existence of the thickness-adjusting layer of the liquid crystal layer, the thickness of the liquid crystal layer **50** in the reflective display region R can be made smaller than the thickness of the liquid crystal layer **50** in the transmissive display region T, so that the retardation in the reflective display region R and the retardation in the transmissive display region T can be made to sufficiently approach each other or to be substantially equal to each other. As a result, it is possible to obtain a high contrast display. Moreover, an angle which the surface of the substrate body **10A** and the inclined plane **26a** of the insulating film **26** forms is about 2° to 30°. The insulating film **26** may be formed, for example, over the reflective display region R and the transmissive display region T. In this case, it is preferable that a relatively thick layer is formed in the reflective display region R and a relatively thin layer is

formed in the transmissive display region T, with the inclined plane 26a therebetween.

[0050] The pixel electrode 9 made of a transparent conductive film, such as indium tin oxide (hereinafter "ITO") and an alignment film (not shown) made of polyimide are formed on the surface of the TFT array substrate 10 including the surface of the insulating film 26. Further, in this exemplary embodiment, the reflective film 20 and the pixel electrode 9 are separately prepared and laminated, but a reflective film made of a metal film may be used as the pixel electrode in the reflective display region R. Moreover, by giving an uneven shape to a position of the insulating film 26 functioning as the thickness-adjusting layer of the liquid crystal layer corresponding to the reflective display region R, it is also possible to give a scattering function to the reflective film 20.

[0051] On the other hand, on the counter substrate 25 side, a color filter 22 (a red colored layer 22R in FIG. 3(b)) is formed on a substrate body 25A (the surface of the substrate body 25A on the liquid crystal layer side) made of a light-transmissive material, such as glass or quartz. A black matrix BM surrounds the circumferential edge of a colored layer 22R, and the black matrix BM forms the boundaries of the dot regions D1, D2, and D3. Then, an overcoat layer (not shown) made of resin is formed in the color filter 22 on the liquid crystal layer side, and a common electrode 31 made of transparent conductive film, such as ITO, and an alignment film (not shown) made of polyimide, etc., are formed in the overcoat layer on the liquid crystal layer side.

[0052] The liquid crystal display device according to this exemplary embodiment includes slits 94 at a part of the pixel electrode 9. In this case, a tilted electric field is generated between the electrodes 9 and 31 in the area in which the slits 94 are formed, and thus it is possible to regulate the falling-down direction of liquid crystal molecules along the tilted electric field. Instead of forming the slits 94 in the pixel electrode 9, for example, in a case where protrusions made of resin having predetermined inclined planes are formed on the pixel electrode 9, it is also possible to regulate the falling-down direction of the liquid crystal molecules.

[0053] Further, protrusions 37 made of resin are formed on an alignment film forming surface (that is, a surface in contact with the liquid crystal layer) of the counter substrate 25. The protrusions 37 have inclined planes 37a forming a predetermined angle with respect to the substrate plane (the vertical alignment direction of liquid crystal molecules), and the alignment of the liquid crystal molecules, specifically the direction in which the vertically-aligned liquid crystal molecules fall down, is regulated along the direction of the inclined plane 37a. For example, in a case where slits are formed in the common electrode 31 instead of forming the protrusions 37 on the common electrode 31 of the counter substrate 25, it is also possible to regulate the direction in which liquid crystal molecules fall down.

[0054] Then, in the liquid crystal display device according to this exemplary embodiment, as an alignment regulating device to regulate the direction in which liquid crystal molecules fall down, the protrusions 37 and the slits 94 are arranged to intersect the inclined plane 26a of the aforementioned insulating film 26 as viewed in plan view. That is, as viewed from the normal direction of the substrate of the liquid crystal display device, the protrusions 37 and slits 94 intersect the inclined plane 26a at a predetermined angle θ .

[0055] The protrusions 37, functioning as the alignment regulating device, have predetermined inclined planes, but the maximum angle of inclination thereof is 2° to 30° . In this case, the angle of inclination indicates an angle formed by the substrate 10A and the inclined planes of the protrusions 37, and when the protrusions 37 have curved surfaces, indicates an angle formed by surface tangential to the curved surfaces and the substrate. When the maximum angle of inclination of the inclined planes is less than 2° , it may be difficult to regulate the direction in which liquid crystal molecules fall down, and when the maximum angle of inclination of the inclined planes is more than 30° , light leakage may occur in those portions, to cause defects, such as a decrease in contrast.

[0056] Next, the electrodes 9 and 31 of both the TFT array substrate 10 and the counter substrate 25 are subjected to a vertical alignment treatment. Further, a retardation film 18 and a polarizer 19 are formed on the outer surface side of the TFT array substrate 10, and a retardation film 16 and a polarizer 17 are also formed on the outer surface side of the counter substrate 25 to allow circular polarized light to enter the inner surface side of the substrates. As the structure of the polarizer 17 (19) and the retardation film 16 (18), a circular polarizer obtained by combining a polarizer and a $\lambda/4$ retardation film, or a wide-band circular polarizer obtained by combining a polarizer, a $\lambda/2$ retardation film, and a $\lambda/4$ retardation film, or a viewing angle compensating plate obtained by combining a polarizer, a $\lambda/2$ retardation film, a $\lambda/4$ retardation film, and a negative C plate (a retardation film having an optical axis in its thickness direction) can be employed. Furthermore, a backlight 15, which is the light source for transmissive display, is provided outside the polarizer 19 formed on the TFT array substrate 10.

[0057] According to the liquid crystal display device of this exemplary embodiment as described above, the slits 94 are formed in the pixel electrode 9 and the protrusions 37 are formed on the common electrode 31. Thus, the direction in which the vertically aligned liquid crystal molecules fall down is regulated by the protrusions 37 and the slits 94. Accordingly, it is difficult for disclination to occur when a voltage is applied between the electrodes 9 and 31, so that the occurrence of display defects, such as afterimages, is reduced or suppressed, and any defects where unevenness of displaying is observed when its display surface is viewed from an oblique direction hardly occur.

[0058] Further, since the protrusions 37 and the slits 94 intersect the inclined plane 26a as viewed in plan view, the direction in which liquid crystal molecules fall down is regulated mainly by the protrusions 37 and/or the slits 94, almost without being influenced by the inclined plane 26a. That is, since the alignment regulation by the inclined plane 26a of the insulating film 26 is very weak, it is preferable that the alignment regulation of the liquid crystal molecules is performed mainly by the protrusions 37 or the slits 94 in order to obtain satisfactory alignment regulation. However, as in this exemplary embodiment, when the protrusions 37 and the slits 94 intersect the inclined plane 26a, the alignment regulation by the inclined plane 26a is cancelled by the alignment regulation by the protrusions 37 and the slits 94, so that it is possible to satisfactorily align liquid crystal molecules along the protrusions 37 and the slits 94, as shown in FIG. 4. That is, the alignment regulating force by the

inclined plane **26a** is negligible as compared with the alignment regulating force by the protrusions **37** and the slits **94**, so that slightly disordered alignment of liquid crystal molecules hardly occurs due to the alignment regulating force of the inclined plane **26a**. As a result, in the liquid crystal display device of this exemplary embodiment, further disclination hardly occurs when a voltage is applied between the electrodes **9** and **31**, so that the occurrence of display defects, such as afterimages, is reduced or suppressed, and any defects where unevenness of displaying is observed when its display surface is viewed from an oblique direction hardly occur. Therefore, it is possible to obtain a uniform display having a wide viewing angle in both the transmissive display and the reflective display.

[0059] Furthermore, specifically, it is more preferable that the inclined plane **26a** intersects the protrusions **37** and/or slits **94** such that an angle θ formed by a major axis of the inclined plane **26a** of the insulating film **26** and a major axis of the protrusions **37** and/or slits **94** is 30° to 90° (45° in this exemplary embodiment). This is because, when the intersection angle θ is less than 30° , the alignment regulation is influenced by the inclined plane **26a** of the insulating film **26**, so that alignment failure of the liquid crystal molecules may occur in the vicinity of the intersections.

[0060] [Second Exemplary Embodiment]

[0061] A second exemplary embodiment of the present invention is described below with reference to the figures.

[0062] FIGS. **5A** and **5B** are a plan view and a cross-sectional view of a liquid crystal display device according to the second exemplary embodiment, which are schematics equivalent to FIGS. **3A** and **3B** of the first exemplary embodiment. A basic construction of the liquid crystal display device of this exemplary embodiment is similar to that of the first exemplary embodiment, but is largely different from that of the first embodiment in that slits **34** are formed in the common electrode **31**, instead of the protrusions **37** functioning as the alignment regulating device of the counter substrate **25** side, and in an opening shape of the reflective film **20**. Therefore, in FIGS. **5A** and **5B** elements common to those of FIGS. **3A** and **3B** are denoted by the same reference numerals, and a detailed description thereof is omitted.

[0063] Unlike the first exemplary embodiment, in the liquid crystal display device according to this exemplary embodiment, slits **34** are formed in the common electrode **31** of the counter substrate **25** to generate a tilted electric field between the pixel electrodes **9** and the common electrode **31**, thereby carrying out the alignment regulation of liquid crystal molecules. Further, unlike the first exemplary embodiment, in order to form the transmissive display region **T** at centers of the dots **D1**, **D2**, and **D3**, the reflective film **20** is provided at circumferential edges of the dots **D1**, **D2**, and **D3** in a frame shape and rectangular openings **21** are thus formed at the centers of the respective dots **D1**, **D2**, and **D3**. Therefore, in the liquid crystal display device according to this exemplary embodiment, the reflective display region **R** surrounds the transmissive display region **T**.

[0064] In this case, since the reflective display region **R** interrupts an influence from the adjacent pixels, the transmissive display is less influenced by a lateral electric field between the adjacent pixels or a mismatched assembly of the

TFT array substrate **10** and the counter substrate **25**, so that it is possible to obtain a high contrast in the transmissive display. On the contrary, since more slits **94** and **34** than those in the first exemplary embodiment transverse the vicinity of the boundary between the transmissive display region **T** and the reflective display region **R**, that is, the inclined plane **26a**, the influence thereof on the alignment of liquid crystal molecules is concerned. However, by setting the intersection angle θ to about 45° as shown in the drawing, the alignment direction of liquid crystal molecules can be regulated without any problem.

[0065] [Third Exemplary Embodiment]

[0066] A third exemplary embodiment of the present invention is described below with reference to the drawings.

[0067] FIGS. **6A** and **6B** are a plan view and a cross-sectional view of a liquid crystal display device according to the third exemplary embodiment, which are schematics equivalent to FIGS. **3A** and **3B** of the first exemplary embodiment. FIG. **7** is a schematic illustrating a cross-section taken along plane A-A' of FIG. **6A**. A basic construction of the liquid crystal display device of this exemplary embodiment is similar to that of the second exemplary embodiment, but is largely different from that of the second exemplary embodiment in the arrangement of slits formed in the electrodes **9** and **31**, and in an opening shape of the reflective film **20**. Therefore, in FIGS. **6A**, **6B** and **7**, elements common to those of FIGS. **5A** and **5B** are denoted by the same reference numerals, and a detailed description thereof is omitted.

[0068] Unlike the second exemplary embodiment, in the liquid crystal display device according to this exemplary embodiment, slits **34** formed in the common electrode **31** of the counter substrate **25** are designed to form the intersection angle θ of about 90° with the inclined plane **26a**. Further, in the pixel electrode **9** of the TFT array substrate **10**, the area between the adjacent pixels in which ITO is not formed are used as the alignment regulating slits.

[0069] In this case, a tilted electric field is generated between the pixels electrode **9** and the common electrode **31** to carry out the alignment regulation of liquid crystal molecules. Further, since the intersection angle θ between the vicinity of the boundary between the transmissive display region **T** and the reflective display region **R**, that is, the inclined plane **26a**, and the slits **34** is set to about 90° , the disorder in alignment hardly occurs. Furthermore, in the pixel electrodes **9** of the TFT array substrate **10**, the areas between adjacent pixels are used as the alignment regulating slits. Thus, the slit areas decrease as compared with the first and second exemplary embodiments, so that it is possible to obtain a brighter display.

[0070] [Exemplary Electronic Apparatus]

[0071] A concrete example of an electronic apparatus including a liquid crystal display device according the above exemplary embodiments of the present invention is described below.

[0072] FIG. **8** is a perspective view illustrating an example of a portable telephone. In FIG. **8**, reference numeral **1000** denotes a main body of the portable telephone, and reference numeral **1001** denotes a display unit employing the above liquid crystal display device. When the

liquid crystal display devices according to the above embodiments are used in the display unit of an electronic apparatus, such as the portable telephone, etc., it is possible to realize an electronic apparatus including a liquid crystal display unit, which has a high brightness regardless of the operating environment thereof, has a high contrast in both the transmissive display and the reflective display, and has a wide viewing angle.

[0073] Moreover, a technical scope of the present invention is not limited to the aforementioned exemplary embodiments, and modifications and changes may be made thereto without departing from the intention of the present invention. For example, although the present invention is applied above to an active matrix liquid crystal display device employing TFTs functioning as switching elements as in the aforementioned exemplary embodiments, the present invention may be applied to an active matrix liquid crystal display device employing thin film diodes (TFDs) functioning as the switching elements, a passive matrix type liquid crystal display device, etc., for example. On the other hand, the specific descriptions of materials, measures, shapes, etc., of various elements may be properly modified and changed, for example.

What is claimed is:

1. A liquid crystal display, comprising:

a pair of substrates;

a liquid crystal layer interposed between the pair of substrates, the liquid crystal layer being formed of liquid crystal with a negative dielectric anisotropy having an initial alignment state that is vertical;

a transmissive display region for transmissive display and a reflective display region for reflective display provided in one dot region; and

electrodes to drive the liquid crystal being formed on the pair of substrates on a liquid crystal layer side, respectively, one of the electrodes on at least one of the substrates being provided with at least one of slit-shaped openings formed by making a longitudinal opening in part of the electrode, and longitudinal convex portions made of a dielectric substance formed on the one electrode, as an alignment regulating device to regulate alignment of the liquid crystal;

the liquid crystal layer including a thickness-adjusting layer to allow the thickness of the liquid crystal layer in the transmissive display region to be larger than the thickness of the liquid crystal layer in the reflective display region, the thickness-adjusting layer being formed between at least one of the pair of substrates and the liquid crystal layer, the thickness-adjusting layer having an inclined plane in a vicinity of a boundary between the transmissive display region and the reflective display region so that the layer thickness thereof varies continuously; and

the longitudinal direction of the at least one of the openings and the convex portions and the longitudinal direction of the inclined plane of the thickness-adjusting layer of the liquid crystal layer being arranged to intersect each other as viewed in plan view.

2. The liquid crystal display device according to claim 1,

the longitudinal direction of the at least one of the openings and the convex portions intersecting the longitudinal direction of the inclined plane of the thickness-adjusting layer of the liquid crystal layer so as to form an angle of 30° to 90° as viewed in plan view from a normal direction of the substrate.

3. The liquid crystal display device according to claim 1,

the inclined plane and the plane of the substrate forming an angle of 2° to 30°.

4. The liquid crystal display device according to claim 1,

the pair of substrates including an upper substrate and a lower substrate, a backlight for transmissive display being provided on the lower substrate opposite to the liquid crystal layer side, and a reflective film selectively formed in the reflective display region being interposed between the lower-substrate and the liquid crystal layer.

5. The liquid crystal display device according to claim 1,

the at least one of the openings and the convex portions having a construction to regulate a falling-down direction of the vertically aligned liquid crystal molecules in accordance with the variation in an electric field.

6. An electronic apparatus, comprising:

the liquid crystal display device according to claim 1.

* * * * *

专利名称(译)	液晶显示装置和电子设备		
公开(公告)号	US20040227876A1	公开(公告)日	2004-11-18
申请号	US10/778573	申请日	2004-02-17
[标]申请(专利权)人(译)	精工爱普生株式会社		
申请(专利权)人(译)	SEIKO EPSON CORPORATION		
当前申请(专利权)人(译)	京东方科技集团股份有限公司.		
[标]发明人	OKUMURA OSAMU		
发明人	OKUMURA, OSAMU		
IPC分类号	G02F1/1333 G02F1/1335 G02F1/13357 G02F1/1337 G02F1/1343 G02F1/1368 G02F1/139		
CPC分类号	G02F1/133555 G02F1/1393 G02F1/134309 G02F1/133707		
优先权	2003068340 2003-03-13 JP		
其他公开文献	US7126657		
外部链接	Espacenet USPTO		

摘要(译)

本发明提供一种能够实现显示的液晶显示装置，其在透射显示和反射显示两者中具有高亮度和宽视角。根据本发明的液晶显示装置包括透射显示区域和反射显示区域，并且还由具有负介电各向异性的液晶形成，使得初始对准状态是垂直的。用于驱动液晶的电极设置有狭缝形开口和凸起部分以调节液晶分子的排列，并且绝缘膜允许透射显示区域中的液晶层的厚度大于厚度反射显示区域中的液晶层形成在基板和液晶层之间。绝缘膜具有倾斜平面，以在透射显示区域和反射显示区域的边界附近连续地改变其层厚度，并且倾斜平面的纵向方向与开口和/或凸起的纵向方向相交在平面图中看到的部分。

