



(19) **United States**

(12) **Patent Application Publication**
Tanaka et al.

(10) **Pub. No.: US 2004/0212764 A1**

(43) **Pub. Date: Oct. 28, 2004**

(54) **LIQUID CRYSTAL DISPLAY DEVICE**

Publication Classification

(75) Inventors: **Toshiyuki Tanaka**, Nara (JP); **Ikuji Konishi**, Nara (JP); **Katsuhiko Kikuchi**, Nara (JP)

(51) **Int. Cl.⁷** **G02F 1/1335**

(52) **U.S. Cl.** **349/114**

Correspondence Address:
NIXON & VANDERHYE, PC
1100 N GLEBE ROAD
8TH FLOOR
ARLINGTON, VA 22201-4714 (US)

(57) **ABSTRACT**

A transfective liquid crystal display panel, in which at least one of a pixel electrode substrate and a counter electrode substrate is provided with a protruding portion so that the thickness of a liquid crystal layer in a reflective region is smaller than that in a transmissive region, wherein a light-blocking section for shading a defective orientation domain formed by an insufficiently-rubbed portion around the protruding portion is formed simultaneously with, and using the same material as, another element such as a storage capacitor electrode section, a signal line or a scanning line. Thus, the decrease in the display quality due to the defective orientation domain can be suppressed without adding to the production process.

(73) Assignee: **Sharp Kabushiki Kaisha**, Osaka (JP)

(21) Appl. No.: **10/806,255**

(22) Filed: **Mar. 23, 2004**

(30) **Foreign Application Priority Data**

Apr. 24, 2003 (JP) 2003-119370

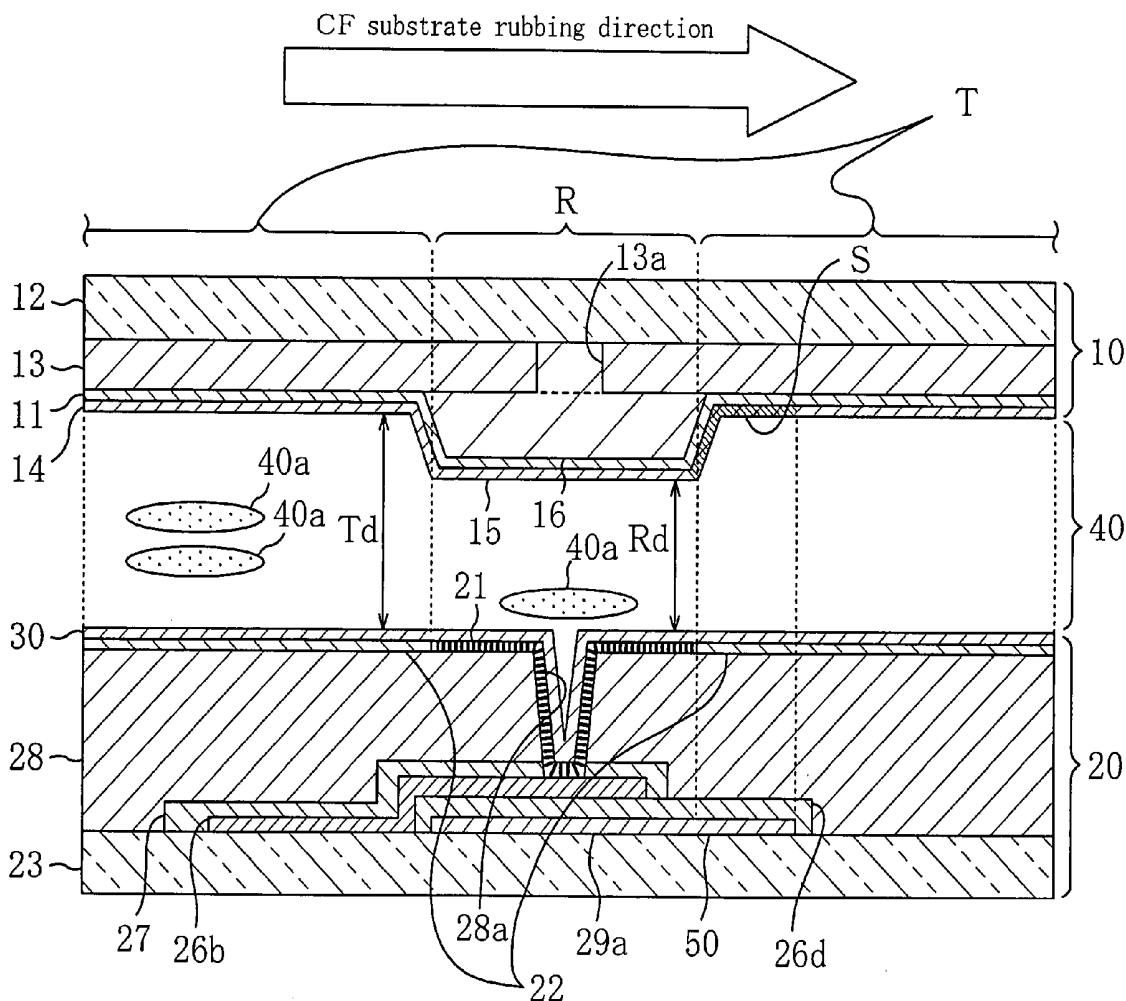


FIG. 1

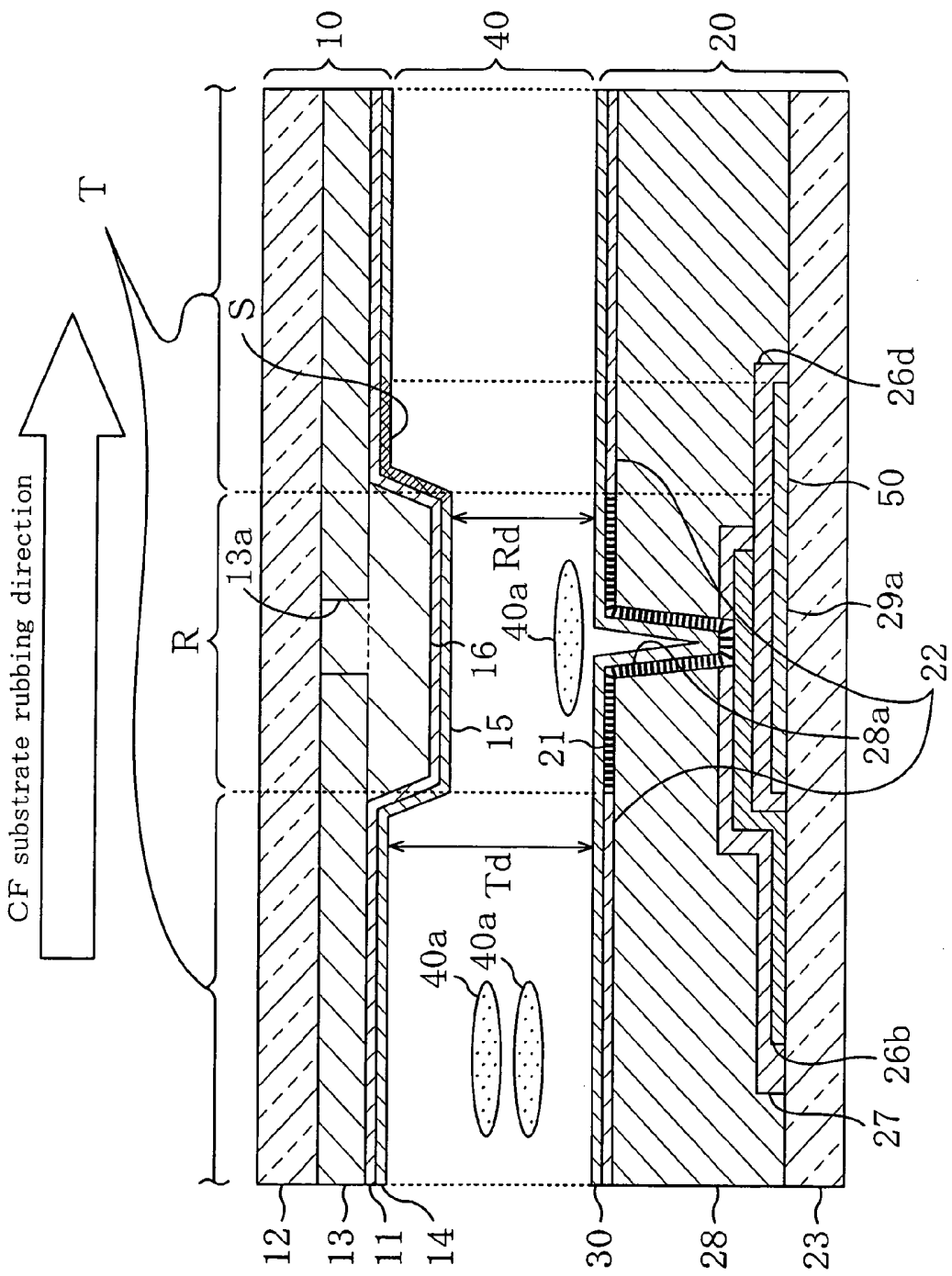


FIG. 2

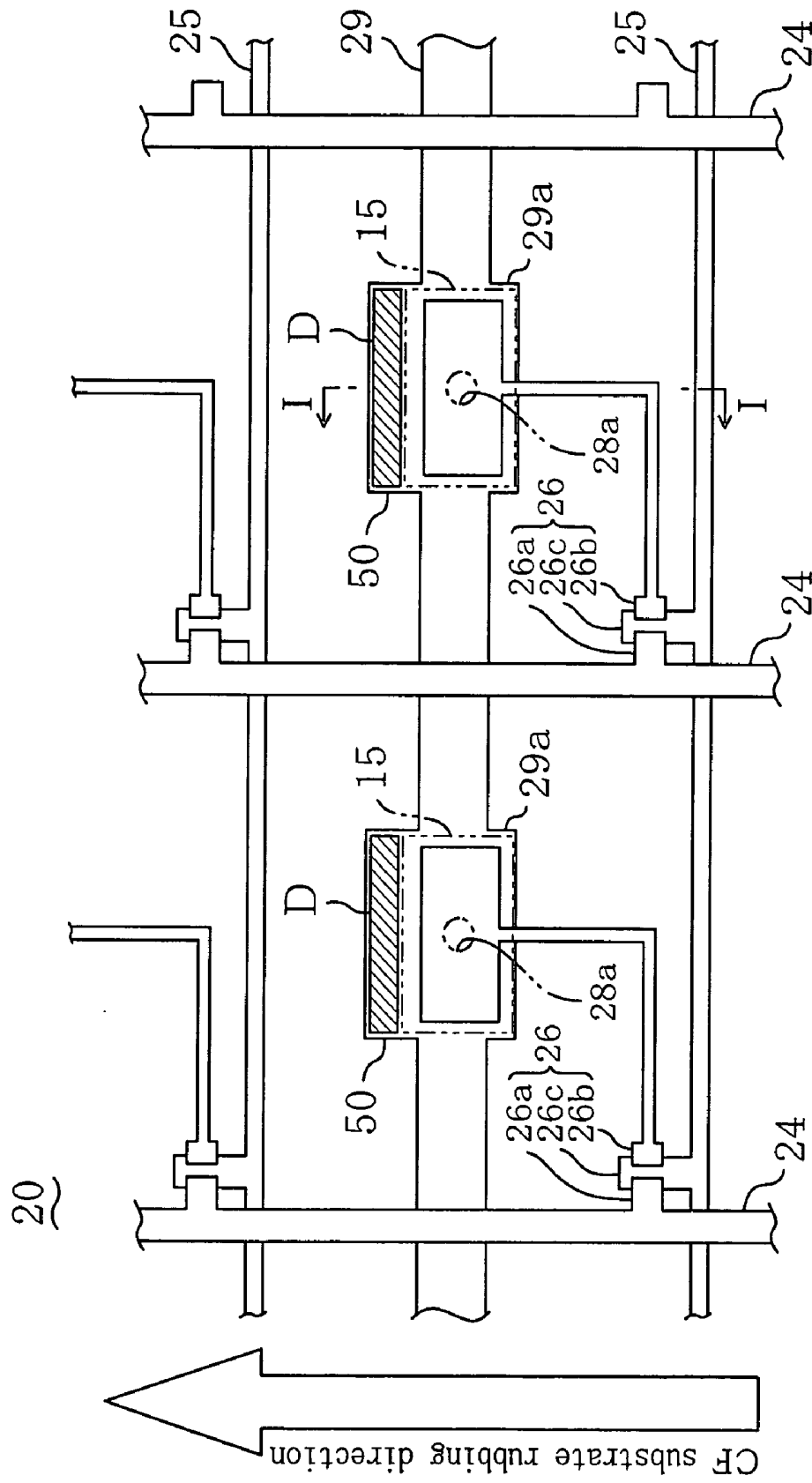


FIG. 3A

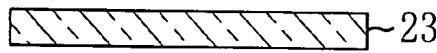


FIG. 3B TaN/Ta/TaN film

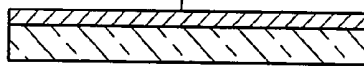


FIG. 3C Photoresist film

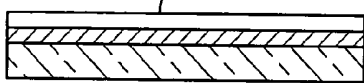


FIG. 3D UV light Photomask

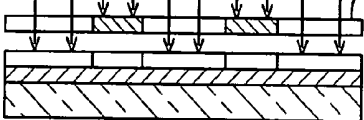


FIG. 3E

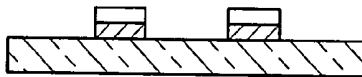


FIG. 3F 26c 29a



FIG. 3G Ta₂O₅



FIG. 3H Ta₂O₅ 26d



FIG. 3I

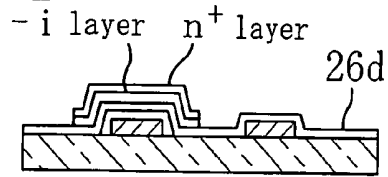


FIG. 3J

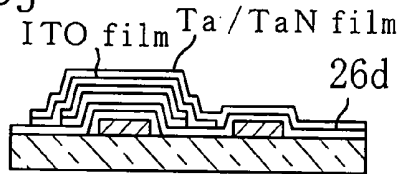


FIG. 3K

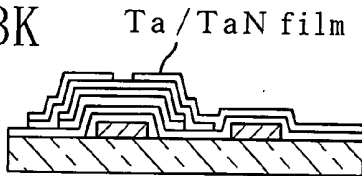


FIG. 3L ITO film

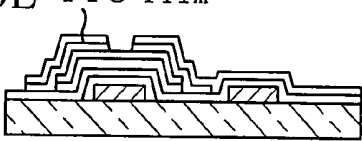


FIG. 3M 26a 26b 26

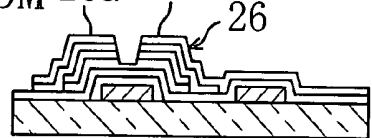


FIG. 3N 26a 27 26 26b

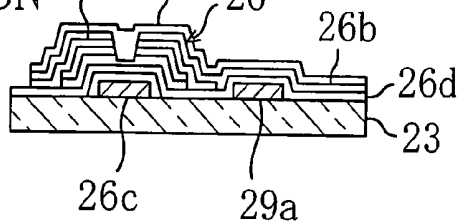


FIG. 6

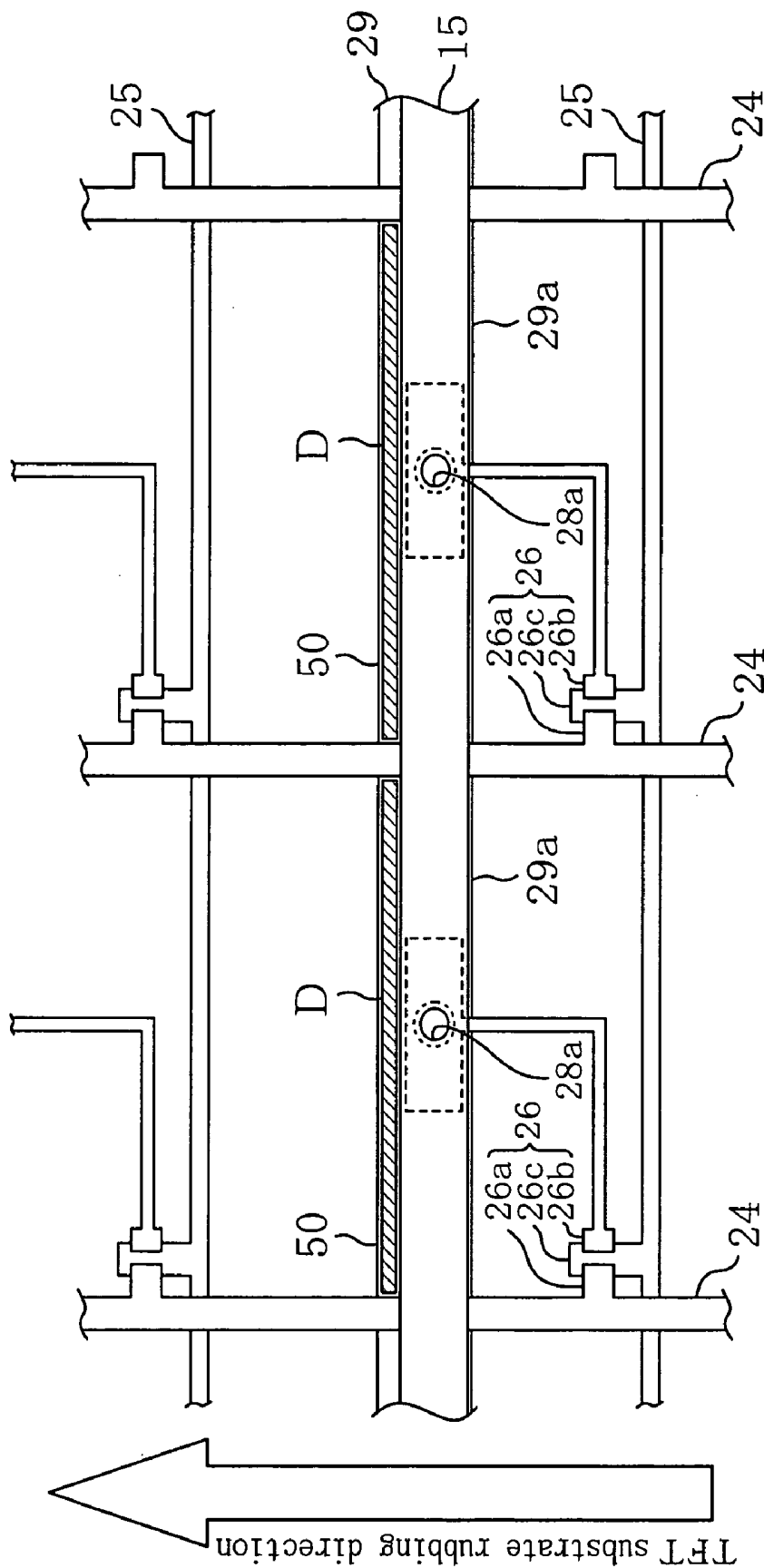


FIG. 7

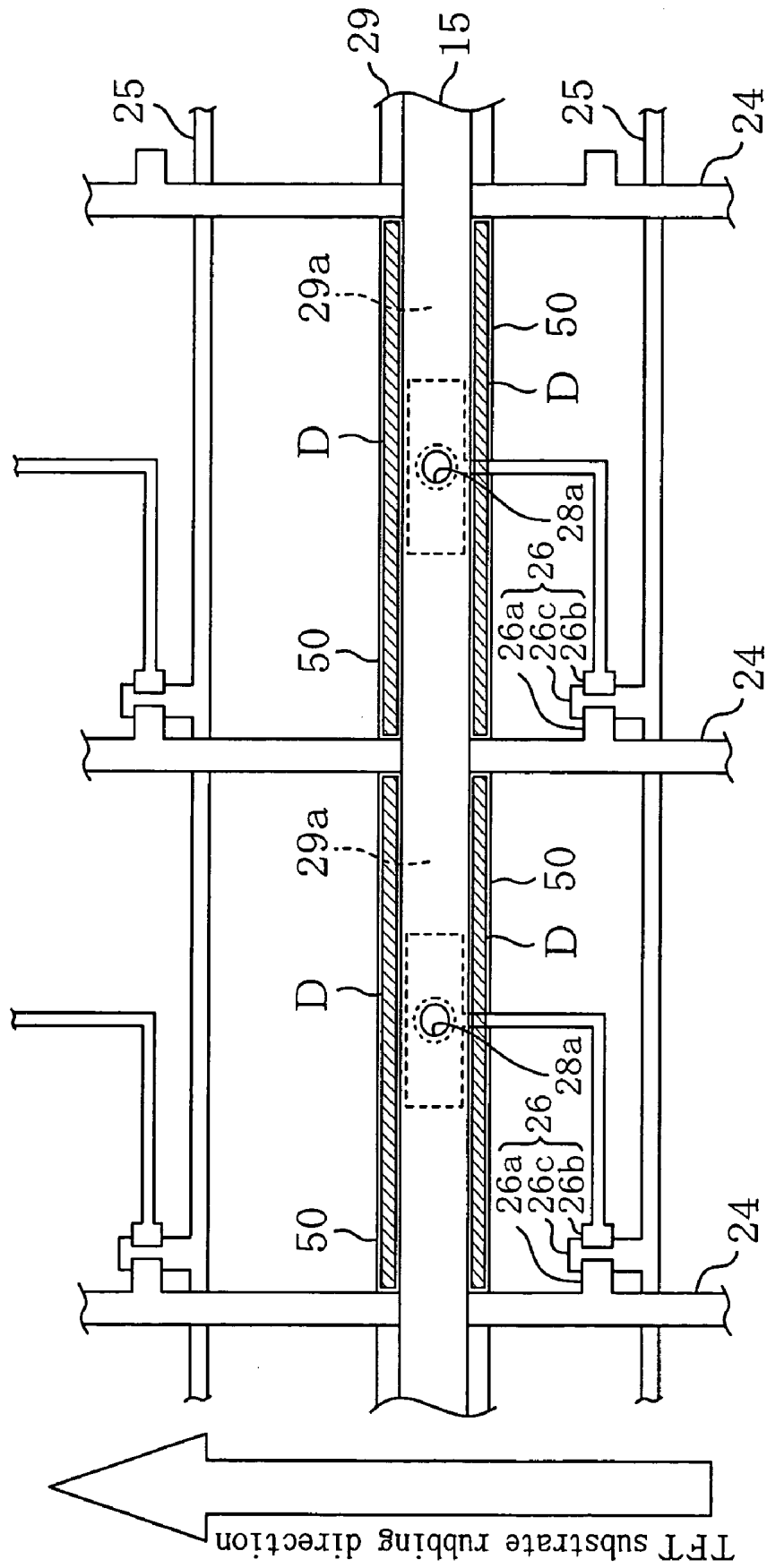


FIG. 8

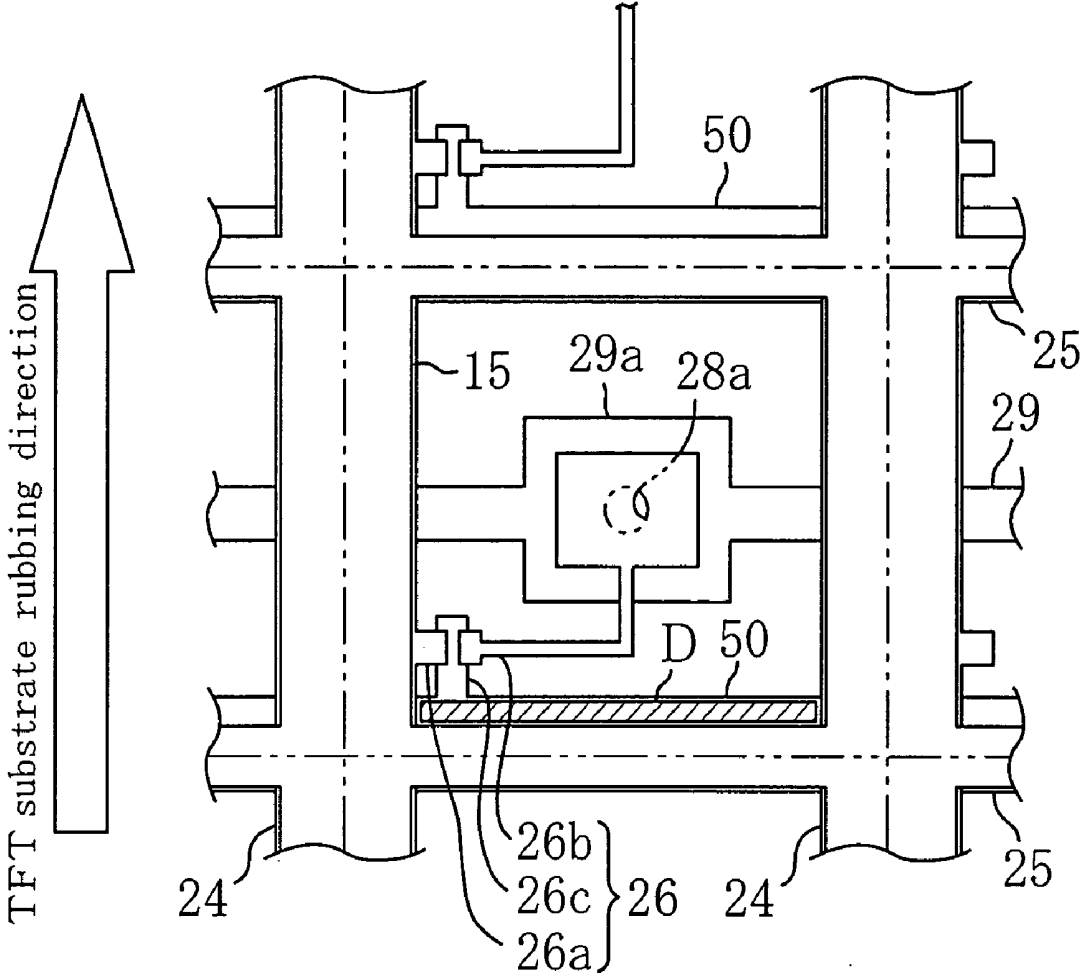


FIG. 9

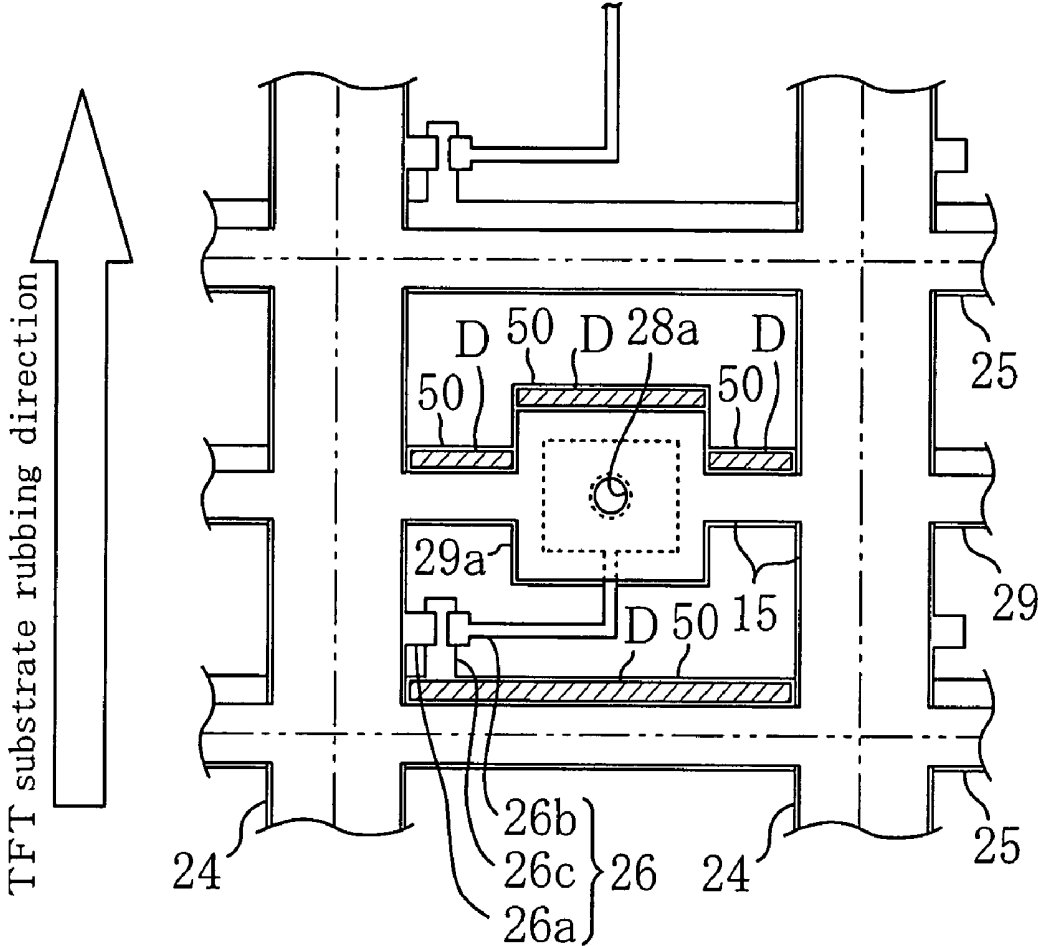


FIG. 10

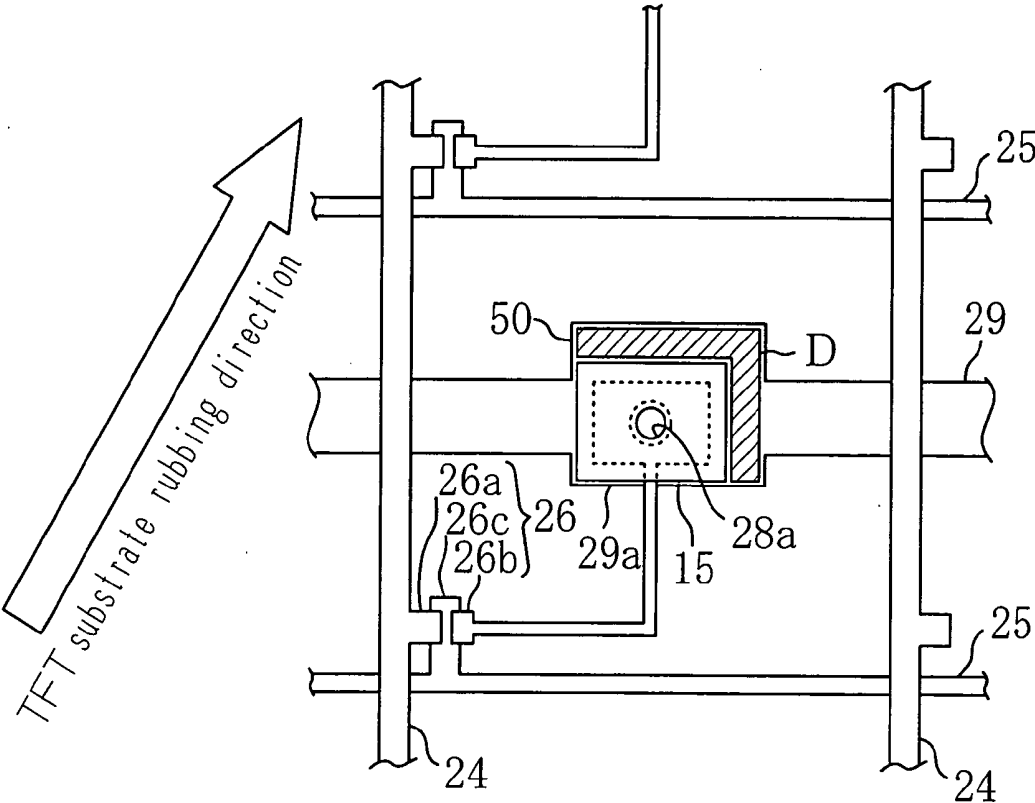
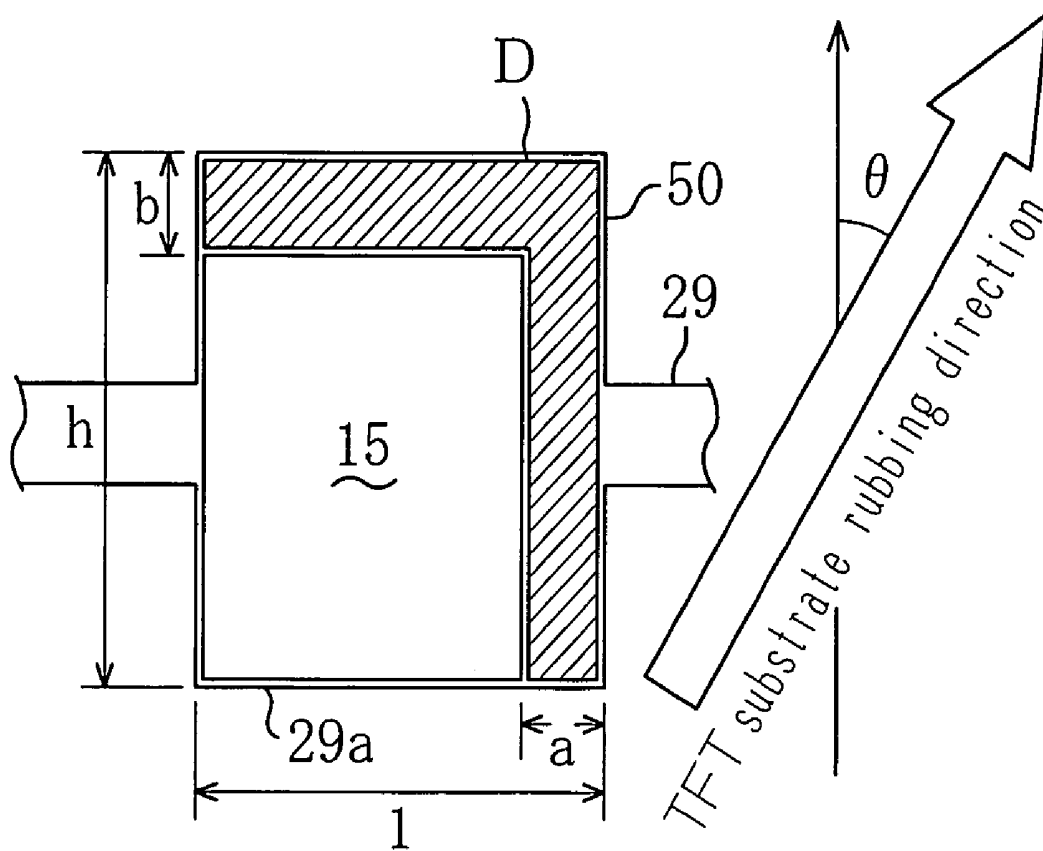


FIG. 11



LIQUID CRYSTAL DISPLAY DEVICE

[0001] This nonprovisional application claims priority under 35 U.S.C. §119(a) on patent application Ser. No. 2003-119370 filed in Japan on Apr. 24, 2003; the entire contents of which are hereby incorporated by reference.

BACKGROUND OF THE INVENTION

[0002] 1. Field of the Invention

[0003] The present invention relates to a liquid crystal display panel used in a transfective (or transflective) liquid crystal display device.

[0004] 2. Description of the Background Art

[0005] For their advantageous features such as a small thickness and a small power consumption, liquid crystal display devices have recently been widely used in various applications, including OA apparatuses such as word processors and personal computers, PDAs (personal digital assistants) such as electronic organizers, and monitors of camera-incorporated VTRs.

[0006] These liquid crystal display devices are generally classified into those of transmissive type and those of reflective type. Unlike CRTs (cathode ray tubes) or EL (electroluminescence) devices, liquid crystal display devices are not self-luminous. In a transmissive liquid crystal display device, an image is displayed by using light from an illuminator (so-called "backlight") provided on the back side of the liquid crystal display panel. In a reflective liquid crystal display device, an image is displayed by using ambient light.

[0007] Advantages and disadvantages of these types of liquid crystal display devices are as follows. A transmissive liquid crystal display device, which uses a backlight, is less influenced by the brightness of the environment, and is capable of displaying a bright image with a high contrast ratio. However, with the backlight, it consumes a large amount of power (the backlight accounts for about 50% or more of the total power consumption). Furthermore, the visibility lowers under a very bright environment (e.g., when used outdoors under a clear sky). Increasing the brightness of the backlight in order to maintain a sufficient visibility will further increase the power consumption. On the other hand, a reflective liquid crystal display device, which does not have a backlight, consumes little power, but the brightness and the contrast ratio thereof are substantially influenced by the conditions under which it is used, e.g., the brightness of the environment. Particularly, the visibility lowers significantly under dark environments.

[0008] In view of this, transfective liquid crystal display devices, which are capable of operating both in a transmissive mode and in a reflective mode, have been proposed in the art, in order to combine the advantages together while eliminating the disadvantages.

[0009] As schematically illustrated in the cross-sectional view of FIG. 12, a transfective liquid crystal display device includes, for each pixel, a reflective pixel electrode section 101 for reflecting ambient light coming from the upper side of the figure, and a transmissive pixel electrode section 102 for transmitting light from the backlight coming from the lower side of the figure. The transfective liquid crystal display device is capable of displaying an image by using

both display modes, or by selectively using a transmissive display mode or a reflective display mode according to the environment under which it is used (e.g., the brightness of the environment). Thus, the transfective liquid crystal display device provides both the advantage of a reflective liquid crystal display device (low power consumption) and that of a transmissive liquid crystal display device (being less influenced by the brightness of the environment and being capable of displaying a bright image with a high contrast ratio). Furthermore, the disadvantage of a transmissive liquid crystal display device (the lowering of the visibility under a very bright environment) is suppressed.

[0010] Moreover, in a transfective liquid crystal display device as described above, the thickness of a liquid crystal layer 105 between a counter electrode substrate 103 and a pixel electrode substrate 104 needs to be such that the thickness R_d in a reflective region R is smaller than the thickness T_d in a transmissive region T (e.g., about $\frac{1}{2}$ of T_d ($R_d \approx T_d \times \frac{1}{2}$)). Therefore, a protruding portion 106 is conventionally provided in the reflective region R of the pixel electrode substrate 104, and the reflective pixel electrode section 101 on the protruding portion 106, so that the thickness R_d of the liquid crystal layer 105 in the reflective region R is reduced by the thickness of the protruding portion 106 in the panel thickness direction, as described in U.S. Pat. No. 6,195,140 (Japanese Patent Application No. 11-101992), U.S. Pat. No. 6,295,109, U.S. Patent Application Publication No. 2003-0117551, U.S. patent application Ser. No. 10/260,248, U.S. patent application Ser. No. 10/689,086, etc.

SUMMARY OF THE INVENTION

[0011] In a liquid crystal display panel used in a transfective liquid crystal display device as described above, when the pixel electrode substrate 104 is subjected to a rubbing treatment, an insufficiently-rubbed portion S occurs around the protruding portion 106 (particularly, in a portion of the transmissive region T downstream (on the right hand side in FIG. 12) of the protruding portion 106 with respect to the rubbing direction). The term "upstream/downstream" will be used with respect to the rubbing direction throughout this specification unless otherwise specified. The insufficiently-rubbed portion S is shaded by the protruding portion 106 from the rubbing, and is not sufficiently rubbed, thereby providing a weak orientation-regulating force on liquid crystal molecules 105a.

[0012] Then, a region of the liquid crystal layer 105 corresponding to the insufficiently-rubbed portion S becomes a defective orientation domain that is visually perceived as a domain. Thus, the conventional arrangement has a problem that the display quality lowers especially in the transmissive display mode. Note that this problem occurs also when the protruding portion 106 is provided on the counter electrode substrate 103, instead of on the pixel electrode substrate 104.

[0013] This problem may be solved by providing a light-blocking portion for shading the defective orientation domain.

[0014] However, the provision of such a light-blocking portion adds to the production process and may increase the production cost.

[0015] Therefore, it is an object of the present invention to provide a transmissive liquid crystal display device, in which each pixel has a reflective region and a transmissive region, and at least one of the pixel electrode substrate and the counter electrode substrate is provided with a protruding portion so that the thickness of the liquid crystal layer in the reflective region is smaller than that in the transmissive region, wherein the decrease in the display quality due to a defective orientation domain formed by an insufficiently-rubbed portion around the protruding portion can be suppressed without adding to the production process.

[0016] In order to achieve this object, according to the present invention, when an element or elements of the transmissive liquid crystal display device (such as a storage capacitor electrode section for storing a signal, which is formed so as to correspond to a pixel electrode section, or a signal line and a scanning line for applying a signal to the pixel electrode section) is or are formed, a light-blocking section is formed simultaneously with, and using the same material as, the element or elements, whereby it is possible to block a defective orientation domain formed by an insufficiently-rubbed portion around a protruding portion without adding to the production process.

[0017] Note that the light-blocking section may be formed through a step of forming another element using the same material as that of the other element, or may be formed through steps of forming different other elements using the same materials as those of the other elements.

[0018] Moreover, the light-blocking section may be an extension of, and integral with, the other element or elements, separate from the other element or elements, or a mix thereof.

BRIEF DESCRIPTION OF THE DRAWINGS

[0019] FIG. 1 is a cross-sectional view taken along line I-I of FIG. 2.

[0020] FIG. 2 is a plan view schematically illustrating an important part of a TFT substrate used in a liquid crystal display panel of a liquid crystal display device according to Embodiment 1 of the present invention.

[0021] FIG. 3A to FIG. 3N are cross-sectional views schematically and sequentially illustrating the production steps up to the step of forming a protection layer on a TFT substrate.

[0022] FIG. 4 is a view similar to FIG. 2, schematically illustrating an important part of a TFT substrate used in a liquid crystal display panel of a liquid crystal display device according to Embodiment 2 of the present invention.

[0023] FIG. 5 is a view similar to FIG. 1, schematically illustrating an important part of a liquid crystal display panel of a liquid crystal display device according to Embodiment 3 of the present invention.

[0024] FIG. 6 is a view similar to FIG. 2, schematically illustrating an important part of a TFT substrate used in a liquid crystal display panel of a liquid crystal display device according to Embodiment 4 of the present invention.

[0025] FIG. 7 is a view similar to FIG. 2, illustrating a variation of Embodiment 4.

[0026] FIG. 8 is a view similar to FIG. 2, schematically illustrating an important part of a TFT substrate used in a liquid crystal display panel of a liquid crystal display device according to Embodiment 5 of the present invention.

[0027] FIG. 9 is a view similar to FIG. 2, illustrating a variation of Embodiment 5.

[0028] FIG. 10 is a view similar to FIG. 2, schematically illustrating an important part of a TFT substrate used in a liquid crystal display panel of a liquid crystal display device according to Embodiment 6 of the present invention.

[0029] FIG. 11 is a diagram used for calculating the amount of extension of a Cs electrode section in the scanning line direction and that in the signal line direction.

[0030] FIG. 12 is a view similar to FIG. 1, schematically illustrating an important part of a liquid crystal display panel of a conventional liquid crystal display device.

DESCRIPTION OF THE PREFERRED EMBODIMENTS

[0031] Preferred embodiments of the present invention will now be described with reference to the drawings.

Embodiment 1

[0032] FIG. 1 and FIG. 2 schematically illustrate an important part of a liquid crystal display panel of a transmissive liquid crystal display device according to Embodiment 1 of the present invention. The liquid crystal display device displays an image using both the transmissive display mode and the reflective display mode. Note that FIG. 1 is a cross-sectional view taken along line I-I of FIG. 2, and FIG. 2 is a schematic plan view of a pixel electrode substrate as seen from the counter electrode substrate side.

[0033] The liquid crystal display panel of the liquid crystal display device includes a TFT substrate 20 as the pixel electrode substrate, and a color filter substrate 10 (hereinafter referred to as a "CF substrate") as the counter electrode substrate. The TFT substrate 20 includes a reflective pixel electrode section 21 (not shown in FIG. 2) and a transmissive pixel electrode section 22 (not shown in FIG. 2) for each pixel. The CF substrate 10 includes a counter electrode section 11, which is arranged so as to oppose the reflective pixel electrode section 21 and the transmissive pixel electrode section 22 for each pixel in the TFT substrate 20. In the TFT substrate 20, the reflective pixel electrode section 21 is arranged in a central portion of the pixel, and the transmissive pixel electrode section 22 is arranged in a peripheral portion of the pixel so as to surround the reflective pixel electrode section 21. In the CF substrate 10, the counter electrode section 11 extends over a plurality of pixels. A liquid crystal layer 40 is provided between the substrates 20 and 10. The liquid crystal display panel operates in an ECB (Electrically Controlled Birefringence) mode, wherein incident light is selectively transmitted or blocked by utilizing the birefringence of liquid crystal molecules 40a of the liquid crystal layer 40 while changing the orientation of the liquid crystal molecules 40a by the application of an electric field. The liquid crystal display panel includes a backlight (not shown) on the TFT substrate 20 side (the lower side in FIG. 1).

[0034] The TFT substrate 20 includes a transparent substrate 23 made of an electrically insulative, transparent

material such as a glass. A plurality of signal lines **24** and a plurality of scanning lines **25** are arranged on the transparent substrate **23** so as to cross each other in a lattice pattern defining a matrix of pixels therein for applying a signal to the reflective pixel electrode section **21** and the transmissive pixel electrode section **22** of each pixel. A TFT **26** (Thin Film Transistor) is provided in the vicinity of the intersection between each signal line **24** and each scanning line **25**. Each TFT **26** includes a source electrode **26a**, a drain electrode **26b** and a gate electrode **26c**, and a gate insulating film **26d** is provided between the source and drain electrodes **26a** and **26b** and the gate electrode **26c**. The signal line **24** and the scanning line **25** are electrically connected to the source electrode **26a** and the gate electrode **26c**, respectively. Moreover, the drain electrode **26b** extends to a central portion of the pixel, and the drain electrode **26b** and the source electrode **26a** are covered by a protection layer **27**.

[0035] An insulating layer **28** is provided over the signal line **24**, the scanning line **25** and the TFT **26**, and the reflective pixel electrode section **21** and the transmissive pixel electrode section **22** are provided on the insulating layer **28**. A contact hole **28a** is running in the thickness direction through the insulating layer **28** in a portion of the insulating layer **28** that opposes a central portion of the reflective pixel electrode section **21** in the panel thickness direction. The reflective pixel electrode section **21** is electrically connected to the drain electrode **26b** of the TFT **26** via the contact hole **28a**. On the transparent substrate **23** side of the insulating layer **28**, a capacitor electrode line **29** extends parallel to the scanning line **25**. A storage capacitor electrode section **29a** (hereinafter referred to as a "Cs electrode section") for storing a signal is formed along the capacitor electrode line **29** so as to oppose the reflective pixel electrode section **21** in the panel thickness direction. Note that the gate insulating film **26d** of the TFT **26** extends over the storage capacitor electrode line **29** and the Cs electrode section **29a**.

[0036] The reflective pixel electrode section **21** is made of a light-reflecting metal film such as an aluminum (Al) film. On the other hand, the transmissive pixel electrode section **22** is made of a light-transmitting transparent conductive film such as an ITO (Indium Tin Oxide) film. A side surface of the transmissive pixel electrode section **22** is electrically connected to a side surface of the reflective pixel electrode section **21**. An alignment film **30**, which has been rubbed in a predetermined direction, is provided over the reflective pixel electrode section **21** and the transmissive pixel electrode section **22**, whereby the liquid crystal molecules **40a** in the vicinity of the interface between the TFT substrate **20** and the liquid crystal layer **40** are aligned in the predetermined direction and parallel to the TFT substrate **20**. Note that while the reflective metal film of the reflective pixel electrode section **21** and the transparent conductive film of the transmissive pixel electrode section **22** are connected to each other with the side surfaces thereof abutting each other in the present embodiment, they may alternatively be connected to each other with an end portion of the reflective metal film and an end portion of the transparent conductive film overlap each other. Alternatively, the transparent conductive film of the transmissive pixel electrode section **22** may be extended to the reflective pixel electrode section **21**, while arranging a reflective metal film over the extended portion of the transparent conductive film, thereby providing the reflective pixel electrode section **21**.

[0037] The CF substrate **10** also includes a transparent substrate **12** made of an electrically insulative, transparent material such as a glass. On the liquid crystal layer **40** side of the transparent substrate **12**, a color filter layer **13** is provided for each pixel. An opening **13a** is running in the thickness direction through the color filter layer **13** in a portion of the color filter layer **13** that opposes a central portion of the reflective pixel electrode section **21** in the panel thickness direction, and the counter electrode section **11** is provided on the color filter layer **13**. The counter electrode section **11** is also made of a transparent conductive film such as an ITO film, as is the transmissive pixel electrode section **22**. Moreover, an alignment film **14**, which has been rubbed in a predetermined direction indicated by an arrow in FIG. 1 and FIG. 2 (the rightward direction in FIG. 1 and the upward direction in FIG. 2), is provided on the counter electrode section **11**, whereby the liquid crystal molecules **40a** in the vicinity of the interface between the CF substrate **10** and the liquid crystal layer **40** are aligned in the predetermined direction (the rubbing direction) and parallel to the CF substrate **10**.

[0038] In each pixel, a region corresponding to the reflective pixel electrode section **21** is the reflective region R, where light entering the liquid crystal display panel from the CF substrate **10** side (the upper side in FIG. 1) is reflected by the reflective pixel electrode section **21** out of the liquid crystal display panel through the CF substrate **10** in the reflective display mode. On the other hand, a region corresponding to the transmissive pixel electrode section **22** is the transmissive region T, where light from the backlight entering the liquid crystal display panel from the TFT substrate **20** side (the lower side in FIG. 1) is transmitted out of the liquid crystal display panel through the CF substrate **10** in the transmissive display mode.

[0039] In the present embodiment, the CF substrate **10** is provided with a protruding portion **15** for each pixel so that the thickness Rd of the liquid crystal layer **40** in the reflective region R is smaller than the thickness Td of the liquid crystal layer **40** in the transmissive region T ($Rd < Td$). With the protruding portions **15**, the CF substrate **10** has a so-called "multigap structure". Note that the phantom line in FIG. 2 schematically shows the contour of the top surface of the protruding portion **15**.

[0040] Specifically, the protruding portion **15** is formed by a transparent layer **16**. The transparent layer **16** is provided between the color filter layer **13** and the counter electrode section **11** in the reflective region R so as to raise a portion of the counter electrode section **11** in the reflective region R in the panel thickness direction toward the reflective pixel electrode section **21** (in the downward direction in FIG. 1). The shape and size of the top surface of the protruding portion **15** are generally the same as those of the reflective pixel electrode section **21**.

[0041] The protruding portion **15** is formed by the transparent layer **16**, as described above, thereby avoiding a decrease in the optical transmittance in the reflective region R, which occurs when a protruding portion is formed by increasing the thickness of the color filter layer **13**. Furthermore, the opening **13a** of the color filter layer **13** is filled with a portion of the transparent layer **16**, whereby it is possible to increase the optical transmittance in the reflective region R without substantially detracting from the function

of the color filter layer **13** by the provision of the opening **13a**, as compared with a case where the color filter layer **13** has no opening **13a**. Note that the method of forming the transparent layer **16** as described above may include, for example, forming a film of a negative-type transparent acrylic-resin photosensitive material on the transparent substrate **12**, exposing the film to activation light in a predetermined pattern, developing the film with an alkaline developing solution and washing the film with water to remove the unexposed portions, and then subjecting the film to a heat treatment. Alternatively, it may be provided by patterning by etching, printing, transferring, etc.

[0042] In the present embodiment, the Cs electrode section **29a** is extended downstream of the protruding portion **15**, as illustrated in **FIG. 1** and **FIG. 2**, so as to shade a defective orientation domain D formed by the insufficiently-rubbed portion S downstream (on the right hand side in **FIG. 1** and on the upper side in **FIG. 2**) of the protruding portion **15** on the CF substrate **10**. The extended portion forms a light-blocking section **50** of the present invention. Note that a portion upstream (on the left hand side in **FIG. 1** and on the lower side in **FIG. 2**) of the protruding portion **15** is less likely to be an insufficiently-rubbed portion. Therefore, the upstream end of the Cs electrode section **29a** is generally aligned with the upstream end of the protruding portion **15** with respect to the rubbing direction.

[0043] The process of producing the liquid crystal display panel having such a structure, up to the step of forming the protection layer **27** on the TFT substrate **20**, will now be described with reference to **FIG. 3A** to **FIG. 3N**.

[0044] Step 1

[0045] The transparent substrate **23** is washed (see **FIG. 3A**).

[0046] Step 2

[0047] A TaN/Ta/TaN film is deposited by sputtering on the transparent substrate **23**, as illustrated in **FIG. 3B**, in order to form the scanning line **25**, the gate electrode **26c**, the capacitor electrode line **29**, and the Cs electrode section **29a** including the light-blocking section **50**, which is formed as an extended portion of the Cs electrode section **29a**.

[0048] Step 3

[0049] A photoresist film is deposited on the TaN/Ta/TaN film, as illustrated in **FIG. 3C**.

[0050] Step 4

[0051] The photoresist film is irradiated with UV light via a photomask (see **FIG. 3D**). The photomask used in this step is patterned so that the light-blocking portions thereof correspond to the shapes of the scanning line **25**, the gate electrode **26c**, the capacitor electrode line **29** and the Cs electrode section **29a**. The light-blocking portion corresponding to each Cs electrode section **29a** is extended by a predetermined amount in the downstream direction so as to form two light-blocking sections **50** and **50**.

[0052] Step 5

[0053] Unnecessary portions of the TaN/Ta/TaN film are removed by dry etching using a mixed gas of CF_4 and O_2 , as illustrated in **FIG. 3E**. Thus, the scanning line **25**, the gate electrode **26c**, the capacitor electrode line **29**, the Cs elec-

trode section **29a** and the light-blocking section **50** are formed. Therefore, the light-blocking section **50** is formed during the step of forming the scanning line **25** and the Cs electrode section **29a** by using the same material as that of the scanning line **25** and the Cs electrode section **29a**.

[0054] Step 6

[0055] The remaining resist film is stripped, as illustrated in **FIG. 3F**.

[0056] Step 7

[0057] The surface of the gate electrode **26c** is oxidized by an anodic oxidation method to produce Ta_2O_5 (see **FIG. 3G**).

[0058] Step 8

[0059] The gate insulating film **26d** (e.g., an SiN_x film) is deposited substantially across the entire surface by a plasma CVD method (see **FIG. 3H**).

[0060] Step 9

[0061] An amorphous silicon \bar{i} layer is formed by a plasma CVD method on a portion of the gate insulating film **26d** corresponding to the gate electrode **26c** (see **FIG. 3I**).

[0062] Step 10

[0063] An amorphous silicon n^+ layer is formed by a plasma CVD method on the amorphous silicon \bar{i} layer.

[0064] Step 11

[0065] The n^+ layer and the \bar{i} layer are simultaneously patterned by dry etching.

[0066] Step 12

[0067] An ITO film is deposited by sputtering on the amorphous silicon n^+ layer, and a Ta/TaN film is deposited by sputtering on the ITO film, as illustrated in **FIG. 3J**.

[0068] Step 13

[0069] The Ta/TaN film is patterned by dry etching to form the signal line **24**, as illustrated in **FIG. 3K**.

[0070] Step 14

[0071] The ITO film formed in Step 12 is patterned by wet etching, as illustrated in **FIG. 3L**.

[0072] Step 15

[0073] The n^+ layer is divided by dry etching into two pieces, one on the source electrode **26a** side and another on the drain electrode **26b** side. In this step, a portion of the \bar{i} layer is also etched away. After this step, the source electrode **26a** and the drain electrode **26b** of the TFT **26** are completed, as illustrated in **FIG. 3M**.

[0074] Step 16

[0075] An SiN_x film for forming the protection layer **27** is formed by a plasma CVD method, as illustrated in **FIG. 3N**.

[0076] Step 17

[0077] The SiN_x film is patterned by wet etching to form the protection layer **27**.

[0078] Through Steps 1 to 17 above, the TFT **26**, the signal line **24**, the scanning line **25**, the capacitor electrode line **29**, the Cs electrode section **29a** and the light-blocking

section **50** are formed on the transparent substrate **23**. Thus, in the present embodiment, the light-blocking section **50** can be formed only by changing the photomask in Step 4. Then, the insulating layer **28**, the reflective and transmissive pixel electrode sections **21** and **22** and the alignment film **30** are formed sequentially, thereby obtaining the TFT substrate **20**.

[0079] The following experiments were conducted for examining the relationship between the thickness W_d of the transparent layer **16** (the height of the protruding portion **15**) and the size in the rubbing direction of the defective orientation domain **D** formed by the insufficiently-rubbed portion **S** in the downstream vicinity of the protruding portion **15** in the liquid crystal display panel of the liquid crystal display device having such a structure.

[0080] In Experiments 1 to 3, three liquid crystal display panels were produced, each having a different thickness W_d of the transparent layer **16** according to the thicknesses R_d and T_d of the liquid crystal layer **40** in the reflective region **R** and the transmissive region **T**. For each liquid crystal display panel produced, the size in the rubbing direction of the defective orientation domain **D** was measured.

[0081] In Experiment 1, the thicknesses R_d and T_d of the liquid crystal layer **40** in the reflective region **R** and the transmissive region **T** were set to $R_d=2.5 \mu\text{m}$ and $T_d=5.0 \mu\text{m}$, respectively. Thus, the thickness W_d of the transparent layer **16** was $W_d=2.5 \mu\text{m}$ ($=5.0-2.5$).

[0082] In Experiment 2, the thicknesses R_d and T_d of the liquid crystal layer **40** in the reflective region **R** and the transmissive region **T** were set to $R_d=3.0 \mu\text{m}$ and $T_d=4.0 \mu\text{m}$, respectively. Thus, the thickness W_d of the transparent layer **16** was $W_d=1.0 \mu\text{m}$ ($=4.0-3.0$).

[0083] In Experiment 3, the thicknesses R_d and T_d of the liquid crystal layer **40** in the reflective region **R** and the transmissive region **T** were set to $R_d=2.0 \mu\text{m}$ and $T_d=5.5 \mu\text{m}$, respectively. Thus, the thickness W_d of the transparent layer **16** was $W_d=3.5 \mu\text{m}$ ($=5.5-2.0$).

[0084] The results are shown in Table 1 below (unit: μm).

TABLE 1

	Thickness R_d in reflective region	Thickness T_d in transmissive region	Height W_d of protruding portion	Dimension M of defective orientation domain
Experiment 1	2.5	5.0	2.5	2.0
Experiment 2	3.0	4.0	1.0	1.0
Experiment 3	2.0	5.5	3.5	3.0

[0085] As shown in Table 1 above, the size M in the rubbing direction of the defective orientation domain **D** was $2.0 \mu\text{m}$, $1.0 \mu\text{m}$ and $3.0 \mu\text{m}$ in Experiments 1, 2 and 3, respectively. Therefore, it can be seen that the amount of extension of the Cs electrode section **29a** in the downstream direction, i.e., the size M in the rubbing direction of the light-blocking section **50**, needs to be $1 \mu\text{m}$ or more ($M \geq 1 \mu\text{m}$).

[0086] Thus, the present embodiment provides a transmissive liquid crystal display device, in which each pixel has the reflective region **R** and the transmissive region **T**, and a plurality of protruding portions **15** are provided on the CF substrate **10** so that each protruding portion **15** corresponds

to the reflective region **R**, whereby the thickness R_d of the liquid crystal layer **40** in the reflective region **R** is smaller than the thickness T_d of the liquid crystal layer **40** in the transmissive region **T**. When forming the Cs electrode section **29a** on the TFT substrate **20**, the Cs electrode section **29a** is extended in the downstream direction. In this way, the light-blocking section **50** for shading the defective orientation domain **D** formed by the insufficiently-rubbed portion **S** in the downstream vicinity of each protruding portion **15** on the CF substrate **10** can be formed simultaneously with, and using the same material as, the Cs electrode section **29a**. Thus, the decrease in the display quality in the transmissive display mode due to the defective orientation domain **D** can be suppressed without adding to the process of producing a liquid crystal display panel.

[0087] Note that in the present embodiment, the reflective pixel electrode section **21** and the transmissive pixel electrode section **22** are electrically connected to each other, so that an image can be displayed by using both the transmissive display mode and the reflective display mode. Alternatively, the reflective pixel electrode section **21** and the transmissive pixel electrode section **22** may not be connected to each other, and a signal from the signal line **24** may be supplied selectively to the reflective pixel electrode section **21** or the transmissive pixel electrode section **22**, so that an image can be displayed by selectively using the transmissive display mode or the reflective display mode.

[0088] Moreover, while the present embodiment is directed to a color liquid crystal display device, the present invention may alternatively be applied to a black-and-white liquid crystal display device.

Embodiment 2

[0089] FIG. 4 is a plan view illustrating an important part of a liquid crystal display panel of a liquid crystal display device according to Embodiment 2 of the present invention. Note that those elements already described in Embodiment 1 are denoted by the same reference numerals.

[0090] In the present embodiment, the Cs electrode section **29a** is extended in the upstream direction (the downward direction in FIG. 4), in addition to being extended in the downstream direction (the upward direction in FIG. 4) as in Embodiment 1. The extended portion in the upstream direction forms the light-blocking section **50** for shading the defective orientation domain **D** formed by the insufficiently-rubbed portion **S** in the upstream vicinity of each protruding portion **15** on the CF substrate **10**. Other than this, the present embodiment has the same structure as that of Embodiment 1, which will not be further described below.

[0091] The structure of the present embodiment is based on the fact that when rubbing the substrate having the

protruding portions **15** (the CF substrate **10** in the present embodiment), although the insufficiently-rubbed portion **S** typically occurs downstream of the protruding portion **15**, it may also occur upstream of the protruding portion **15**. The structure of the present embodiment allows for designs with greater margins with respect to the defective orientation domain **D** formed by the insufficiently-rubbed portion **S** around the protruding portion **15**.

[0092] Thus, according to the present embodiment, although the size of the transmissive region **T** is reduced as compared with Embodiment 1, it is possible to further suppress the decrease in the display quality in the transmissive display mode due to the defective orientation domain **D** formed by the insufficiently-rubbed portion **S** around the protruding portion **15**.

[0093] Note that in the present embodiment, the Cs electrode section **29a** is extended downstream and upstream of the protruding portion **15**. However, an insufficiently-rubbed portion may also occur beside the protruding portion **15**, i.e., in locations neighboring the protruding portion **15** in a direction perpendicular to the rubbing direction and parallel to the substrate plane, although not as often as those occurring in the downstream vicinity and the upstream vicinity of the protruding portion **15**. Thus, the Cs electrode section **29a** may be extended not only in the upstream/downstream directions, but also in the lateral directions as described above. In this way, it is possible to substantially completely shade defective orientation domains formed by insufficiently-rubbed portions around the protruding portion **15**.

Embodiment 3

[0094] FIG. 5 is a cross-sectional view schematically illustrating a liquid crystal display panel of a liquid crystal display device according to Embodiment 3 of the present invention. Note that those elements already described in Embodiment 1 are denoted by the same reference numerals.

[0095] As in Embodiments 1 and 2, the liquid crystal display panel of this liquid crystal display device includes the TFT substrate **20** and the CF substrate **10**, wherein the TFT substrate **20** includes the reflective pixel electrode section **21** and the transmissive pixel electrode section **22** for each pixel, and the CF substrate **10** includes the counter electrode section **11**, which is arranged so as to oppose the reflective pixel electrode section **21** and the transmissive pixel electrode section **22** of the TFT substrate **20**.

[0096] The present embodiment differs from Embodiments 1 and 2 in that the protruding portions **15** are formed on the TFT substrate **20**, instead of on the CF substrate **10**. Therefore, the surface of the CF substrate **10** closer to the liquid crystal layer **40** is flat.

[0097] The liquid crystal layer **40** has the same thickness as that of the embodiments above. Specifically, the height of the protruding portion **15** is determined so that the thickness R_d in the reflective region **R** corresponding to the reflective pixel electrode section **21** is about one half of the thickness T_d in the transmissive region **T** corresponding to the transmissive pixel electrode section **22** ($R_d \approx T_d/2$) in each pixel.

[0098] Moreover, the Cs electrode section **29a** is extended in the downstream direction (the rightward direction in FIG. 5) and in the upstream direction (the leftward direction in FIG. 5), as in Embodiment 2. These two extended portions

form two light-blocking sections **50**, one for shading the defective orientation domain **D** formed by the insufficiently-rubbed portion **S** in the downstream vicinity of the protruding portion **15** and another for shading the defective orientation domain **D** formed by the insufficiently-rubbed portion **S** upstream of the protruding portion **15**. Other than this, the present embodiment has the same structure as those of Embodiments 1 and 2, which will not be further described below.

[0099] Thus, according to the present embodiment, similar effects to those of Embodiment 2 can be provided also when the protruding portions **15** forming a multigap structure are provided on the TFT substrate **20**.

[0100] Note that in the present embodiment, the Cs electrode section **29a** is extended downstream and upstream of the protruding portion **15**. Alternatively, the Cs electrode section **29a** may be extended only in the downstream direction as in Embodiment 1, or may be extended in the lateral directions beside the protruding portion **15** in addition to the downstream/upstream directions as described above as a variation of Embodiment 2.

Embodiment 4

[0101] FIG. 6 is a plan view schematically illustrating an important part of a liquid crystal display panel of a liquid crystal display device according to Embodiment 4 of the present invention. Note that those elements already described in Embodiments 1 to 3 are denoted by the same reference numerals.

[0102] In the present embodiment, the protruding portions **15** are provided on the TFT substrate **20** so as to run across a plurality of pixels in the scanning line direction (in the horizontal direction in FIG. 6). Each reflective pixel electrode section **21** is also running across a plurality of pixels in the scanning line direction on the top surface of the corresponding protruding portion **15**.

[0103] Thus, while the protruding portions **15** are arranged in an island-like pattern so that each separate protruding portion **15** corresponds to one pixel in Embodiments 1 to 3, the protruding portions **15** are arranged in stripes so that each separate protruding portion **15** continuously extends across a plurality of pixels in the present embodiment. Accordingly, the entire portion of the capacitor electrode line **29** located within a pixel is widened in the signal line direction (in the vertical direction in FIG. 6) to form the Cs electrode section **29a**.

[0104] In the present embodiment, the Cs electrode section **29a** is extended downstream of the protruding portion **15** (in the upward direction in FIG. 6), as in Embodiment 1. The extended portion forms the light-blocking section **50** for shading the defective orientation domain **D** formed by the insufficiently-rubbed portion **S** in the downstream vicinity of the protruding portion **15**. Other than this, the present embodiment has the same structure as that of Embodiment 1, which will not be further described below.

[0105] Thus, similar effects to those of Embodiment 1 can also be provided by the present embodiment.

[0106] Note that in the present embodiment, the Cs electrode section **29a** is only extended downstream of the protruding portion **15**. Alternatively, as shown in the varia-

tion of FIG. 7, the Cs electrode section 29a may be extended upstream of the protruding portion 15 (in the downward direction in FIG. 7), in addition to being extended downstream of the protruding portion 15 (in the upward direction in FIG. 7) to form the light-blocking sections 50 upstream and downstream of the protruding portion 15, as in Embodiment 2.

Embodiment 5

[0107] FIG. 8 is a plan view schematically illustrating an important part of a liquid crystal display panel of a liquid crystal display device according to Embodiment 5 of the present invention. Note that those elements already described in Embodiment 1 are denoted by the same reference numerals.

[0108] In the present embodiment, the reflective pixel electrode section 21 has an open rectangular shape, and is arranged on the TFT substrate 20 along the periphery of each pixel, whereas the transmissive pixel electrode section 22 has a solid rectangular shape and is arranged in a central portion of each pixel so as to be surrounded by the reflective pixel electrode section 21.

[0109] Accordingly, the protruding portion 15 as viewed in a plan view has an open rectangular shape, conforming to the planar shape of the reflective pixel electrode section 21, and is arranged in a peripheral portion of each pixel. Thus, the protruding portions 15, 15, . . . , are arranged in a lattice pattern defining a matrix of pixels therein, as are the signal line 24 and the scanning line 25, and as opposed to the island-like pattern of Embodiments 1 to 3 or the stripe pattern of Embodiment 4.

[0110] In the present embodiment, one of two adjacent scanning lines 25 and 25 that is located on the upstream side (the lower side in FIG. 8) is extended in the downstream direction (the upward direction in FIG. 8), and the extended portion forms the light-blocking section 50 for shading the defective orientation domain D formed by the insufficiently-rubbed portion S in the downstream vicinity of one of the four sides of the protruding portion 15 that extends in a direction perpendicular to the rubbing direction on the upstream side of the pixel. Other than this, the present embodiment has the same structure as that of Embodiment 1, which will not be further described below.

[0111] In this arrangement, the protruding portion 15 is relatively shifted from the scanning line 25 in the direction (the downward direction in FIG. 8) opposite to the rubbing direction, so that the light-blocking section 50, which is an extended portion of the scanning line 25, is located in the downstream vicinity of the upstream side of the protruding portion 15.

[0112] Thus, the same effects as those of Embodiment 1 can also be provided by the present embodiment.

[0113] Note that in the present embodiment, one of the four lines (two signal lines 24 and two scanning lines 25) surrounding each pixel, i.e., the upstream-side scanning line 25, is extended in the downstream direction. Alternatively, in order to shade a defective orientation domain formed by an insufficiently-rubbed portion in the upstream vicinity of the downstream side of the protruding portion 15, the downstream-side scanning line 25 may be extended in the upstream direction. Alternatively, in order to additionally

shade defective orientation domains formed by insufficiently-rubbed portions beside the protruding portion 15, i.e., those neighboring the protruding portion 15 in a direction perpendicular to the rubbing direction and parallel to the substrate plane, the remaining two of the four lines surrounding each pixel, i.e., two signal lines 24, may be extended in the respective lateral directions.

[0114] Moreover, while the present embodiment is directed to an arrangement where the reflective pixel electrode section 21 and the protruding portion 15 are provided only in a peripheral portion of each pixel, the present invention may alternatively be applied to an arrangement where they are provided not only in a peripheral portion but also in a central portion of each pixel, as shown in the variation of FIG. 9. Such an arrangement can be accommodated by using the light-blocking sections of the previous embodiments (i.e., by extending the Cs electrode section 29a to form the light-blocking section 50). Thus, where the light-blocking section 50 is formed to be integral with another element, the light-blocking section 50 may be formed simultaneously with, and using the same material as, a selected one of a plurality of elements including the signal line 24, the scanning line 25 and the Cs electrode section 29a, and the selection can appropriately be made in view of the location where the defective orientation domain is formed.

Embodiment 6

[0115] FIG. 10 is a plan view schematically illustrating an important part of a liquid crystal display panel of a liquid crystal display device according to Embodiment 6 of the present invention. Note that those elements already described in Embodiments 1 to 5 are denoted by the same reference numerals.

[0116] In the present embodiment, the protruding portions 15 each have a generally rectangular shape, and are arranged in an island-like pattern on the TFT substrate 20 so that each protruding portion 15 is located in a central portion of a pixel. The present embodiment differs from Embodiments 1 to 5 in that the rubbing direction for the TFT substrate 20 is not parallel to the signal line 24, but is at a predetermined angle θ ($0^\circ < \theta < 90^\circ$) with respect to the signal line 24. Thus, where the Cs electrode section 29a has a generally rectangular shape, two of the four sides of the Cs electrode section 29a are present on the downstream side.

[0117] In the present embodiment, the two sides of the Cs electrode section 29a are extended in the downstream direction respectively along the signal line 24 and along the scanning line 25. The extended portion having a planar L-letter shape forms the light-blocking section 50 for shading the defective orientation domain D formed by the insufficiently-rubbed portion S occurring in the downstream vicinity of the protruding portion 15.

[0118] Now, the area P of the Cs electrode section 29a including the extended portion thereof (the light-blocking section 50) will be discussed with reference to FIG. 11. Where "j" and "k" denote the length (unit: μm) of the Cs electrode section 29a in the scanning line direction (in the horizontal direction in FIG. 10) and that in the signal line

direction (in the vertical direction in **FIG. 10**), respectively, the area P' of the Cs electrode section **29a** itself is:

$$P'=j \times k.$$

[0119] The amount of extension (unit: μm) of the Cs electrode section **29a** in the scanning line direction and that in the signal line direction can be obtained as follows. As can be seen from the results shown in Table 1 above, the size in the rubbing direction of the defective orientation domain D is at least $1 \mu\text{m}$. Therefore, the amount of extension in the scanning line direction is at least:

$$1 \times \sin \theta = \sin \theta, \text{ and}$$

[0120] the amount of extension in the signal line direction is at least:

$$1 \times \cos \theta = \cos \theta.$$

[0121] Thus, the area P of the Cs electrode section **29a** including the light-blocking section **50** is at least:

$$P=(j+\sin \theta) \times (k+\cos \theta) \text{ (where } 0^\circ < \theta < 90^\circ \text{)}.$$

[0122] Note that in a case where the reflective pixel electrode section **21** and the protruding portion **15** are arranged in a stripe pattern, running across a plurality of pixels, with the capacitor electrode line **29** being widened across its entire length to form the Cs electrode section **29a**, as in Embodiment 4, the Cs electrode section **29a** can be extended by $\cos \theta$ in the downstream direction along the signal line.

[0123] Thus, according to the present embodiment, similar effects to those of Embodiments 1 to 5 can also be provided when the rubbing direction is not parallel to the signal line direction.

[0124] Note that in the present embodiment, the amount of extension of the Cs electrode section **29a** is calculated based on the relationship between the rubbing direction and the signal line direction. Alternatively, the amount of extension may be calculated based on the relationship between the rubbing direction and the scanning line direction.

[0125] Moreover, while Embodiments 1 to 6 above are directed to arrangements where the Cs electrode section **29a**, the scanning line **25** and/or the signal line **24** is extended to form the light-blocking section **50**, the protruding portion **15** may be shrunk so that a portion of the Cs electrode section **29a**, the scanning line **25** or the signal line **24** that is no longer covered by the shrunk protruding portion **15** functions as the light-blocking section **50**.

[0126] Moreover, while the light-blocking section **50** is formed to be integral with another element such as the Cs electrode section **29a**, the scanning line **25** or the signal line **24** in Embodiments 1 to 6 above, the light-blocking section **50** may alternatively be separate from the other element as long as it is formed simultaneously with, and using the same material as, the other element.

[0127] Furthermore, while the embodiments above are directed to suppressing the decrease in the display quality in the transmissive display mode due to the defective orientation domain D formed in the transmissive region T, the present invention is not limited to this. In a case where a defective orientation domain is formed in the reflective region R, the light-blocking section **50** can be formed from a material with a low optical reflectivity, e.g., a black conductive material, whereby it is possible to suppress the

reflection of incident light in the defective orientation domain D, and thus it is possible to suppress the decrease in the display quality in the reflective display mode due to the defective orientation domain D formed in the reflective region R.

[0128] While the present invention has been described in preferred embodiments, it will be apparent to those skilled in the art that the disclosed invention may be modified in numerous ways and may assume many embodiments other than those specifically set out and described above. Accordingly, it is intended by the appended claims to cover all modifications of the invention that fall within the true spirit and scope of the invention.

What is claimed is:

1. A liquid crystal display device, comprising:
 - a pixel electrode substrate including a transmissive pixel electrode section and a reflective pixel electrode section corresponding to one pixel;
 - a counter electrode substrate including a counter electrode section and arranged so as to oppose the pixel electrode substrate; and
 - a liquid crystal layer arranged between the pixel electrode substrate and the counter electrode substrate, wherein:
 - the pixel includes a transmissive region corresponding to the transmissive pixel electrode section and a reflective region corresponding to the reflective pixel electrode section;
 - at least one of the pixel electrode substrate and the counter electrode substrate includes a protruding portion provided so that a thickness of the liquid crystal layer in the reflective region is smaller than that in the transmissive region;
 - one surface of the at least one of the pixel electrode substrate and the counter electrode substrate that is closer to the liquid crystal layer is subjected to a rubbing treatment in a predetermined direction;
 - the liquid crystal display device includes a light-blocking section for shading a defective orientation domain formed in the liquid crystal layer by an insufficiently-rubbed portion around the protruding portion; and
 - the light-blocking section is formed simultaneously with, and using the same material as, one or more other elements of the liquid crystal display device.
2. The liquid crystal display device of claim 1, wherein:
 - the pixel electrode substrate includes a storage capacitor electrode section that forms a storage capacitor together with the reflective pixel electrode section of the pixel; and
 - the light-blocking section is formed simultaneously with, and using the same material as, the storage capacitor electrode section.
3. The liquid crystal display device of claim 1, wherein:
 - the pixel electrode substrate includes a line for applying an electric potential to the transmissive pixel electrode section and the reflective pixel electrode section of the pixel; and

the light-blocking section is formed simultaneously with, and using the same material as, the line.

4. The liquid crystal display device of claim 1, wherein:

the pixel electrode substrate includes a storage capacitor electrode section that forms a storage capacitor together with the reflective pixel electrode section of the pixel, and a line for applying an electric potential to the transmissive pixel electrode section and the reflective pixel electrode section of the pixel;

a portion of the light-blocking section is formed simultaneously with, and using the same material as, the storage capacitor electrode section; and

the remaining portion of the light-blocking section is formed simultaneously with, and using the same material as, the line.

5. The liquid crystal display device of claim 1, wherein the light-blocking section is provided so as to shade a

defective orientation domain formed in a downstream vicinity of the protruding portion with respect to the rubbing direction.

6. The liquid crystal display device of claim 5, wherein the light-blocking section is provided so as to additionally shade a defective orientation domain formed in an upstream vicinity of the protruding portion with respect to the rubbing direction.

7. The liquid crystal display device of claim 6, wherein the protruding portion is formed so as to extend across the pixel in a direction not parallel to the rubbing direction and parallel to a substrate plane.

8. The liquid crystal display device of claim 6, wherein the light-blocking section is provided so as to additionally shade defective orientation domains formed beside the protruding portion.

* * * * *

专利名称(译)	液晶显示装置		
公开(公告)号	US20040212764A1	公开(公告)日	2004-10-28
申请号	US10/806255	申请日	2004-03-23
[标]申请(专利权)人(译)	夏普株式会社		
申请(专利权)人(译)	夏普株式会社		
当前申请(专利权)人(译)	夏普株式会社		
[标]发明人	TANAKA TOSHIYUKI KONISHI IKUJI KIKUCHI KATSUHIRO		
发明人	TANAKA, TOSHIYUKI KONISHI, IKUJI KIKUCHI, KATSUHIRO		
IPC分类号	G02F1/1337 G02F1/1333 G02F1/1335 G02F1/1362 G02F1/1368		
CPC分类号	G02F1/133371 G02F1/133555 G02F1/136209		
优先权	2003119370 2003-04-24 JP		
其他公开文献	US7167223		
外部链接	Espacenet USPTO		

摘要(译)

一种透反液晶显示面板，其中像素电极基板和对电极基板中的至少一个设置有突出部分，使得反射区域中的液晶层的厚度小于透射区域中的液晶层的厚度，其中，用于遮蔽由突出部分周围的不充分摩擦部分形成的有缺陷的取向域的遮光部分与使用与存储电容器电极部分，信号线或其他元件相同的材料同时形成。扫描线。因此，可以在不增加生产过程的情况下抑制由于缺陷定向域导致的显示质量的降低。

