



(19) **United States**

(12) **Patent Application Publication**  
**Song**

(10) **Pub. No.: US 2002/0039164 A1**

(43) **Pub. Date: Apr. 4, 2002**

(54) **LIQUID CRYSTAL DISPLAY AND SUBSTRATE THEREOF**

(76) Inventor: **Jang-Kun Song**, Seoul (KR)

Correspondence Address:  
**HOWREY SIMON ARNOLD & WHITE LLP**  
**BOX 34**  
**1299 PENNSYLVANIA AVENUE NW**  
**WASHINGTON, DC 20004 (US)**

(21) Appl. No.: **09/935,158**

(22) Filed: **Aug. 23, 2001**

(30) **Foreign Application Priority Data**

Nov. 29, 2000 (KR) ..... 2000-71681

**Publication Classification**

(51) **Int. Cl.<sup>7</sup> ..... G02F 1/1343**

(52) **U.S. Cl. .... 349/141**

(57) **ABSTRACT**

Disclosed are a liquid crystal display and a substrate for the same. The substrate comprises first wires formed in one

direction on the substrate; second wires intersecting and insulated from the first wires; pixel electrodes formed in pixel regions defined by the first wires and the second wires; and switching elements connected to the first wires, the second wires and the pixel electrodes, wherein an interval between two adjacent second wires has a predetermined dimension that repeatedly varies from one set of adjacent second wires to the next, and a side of the pixel electrodes adjacent to the second wires is shaped in a pattern identical to the second wires such that the pixel electrodes have a wide portion and a narrow portion. The liquid crystal display comprises a first substrate; first wires formed in one direction on the first substrate; second wires intersecting and insulated from the first wires; pixel electrodes formed in pixel regions defined by the crossing of the first wires and the second wires, and a side of the pixel electrodes adjacent to the second wires is shaped in a pattern identical to the second wires such that the pixel electrodes have a wide portion and a narrow portion; switching elements connected to the first wires, the second wires and the pixel electrodes; a second substrate provided opposing the first substrate; a black matrix formed on the second substrate; and domain controlling means for controlling the formation of domains of the pixel electrodes.

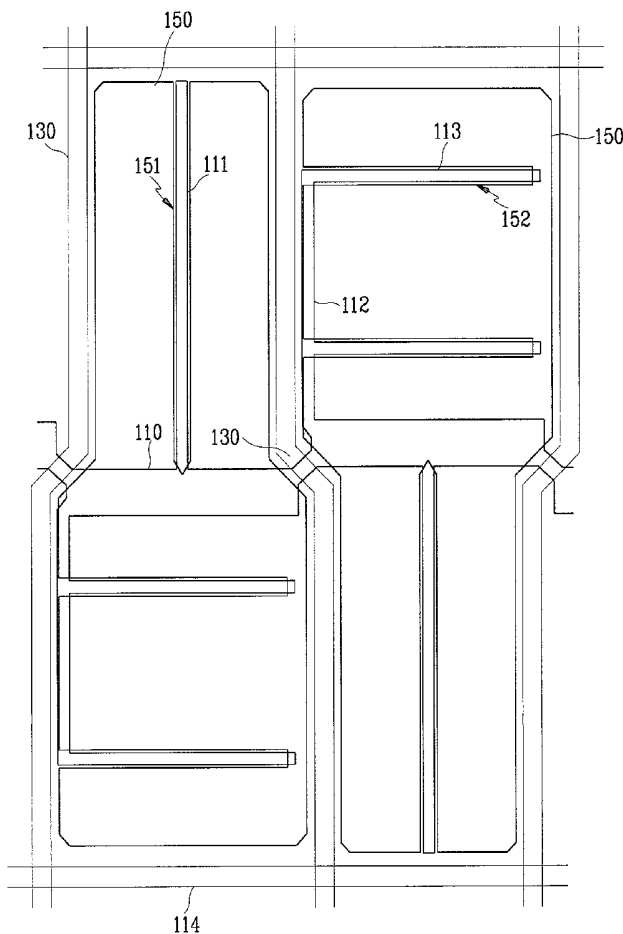




FIG. 2

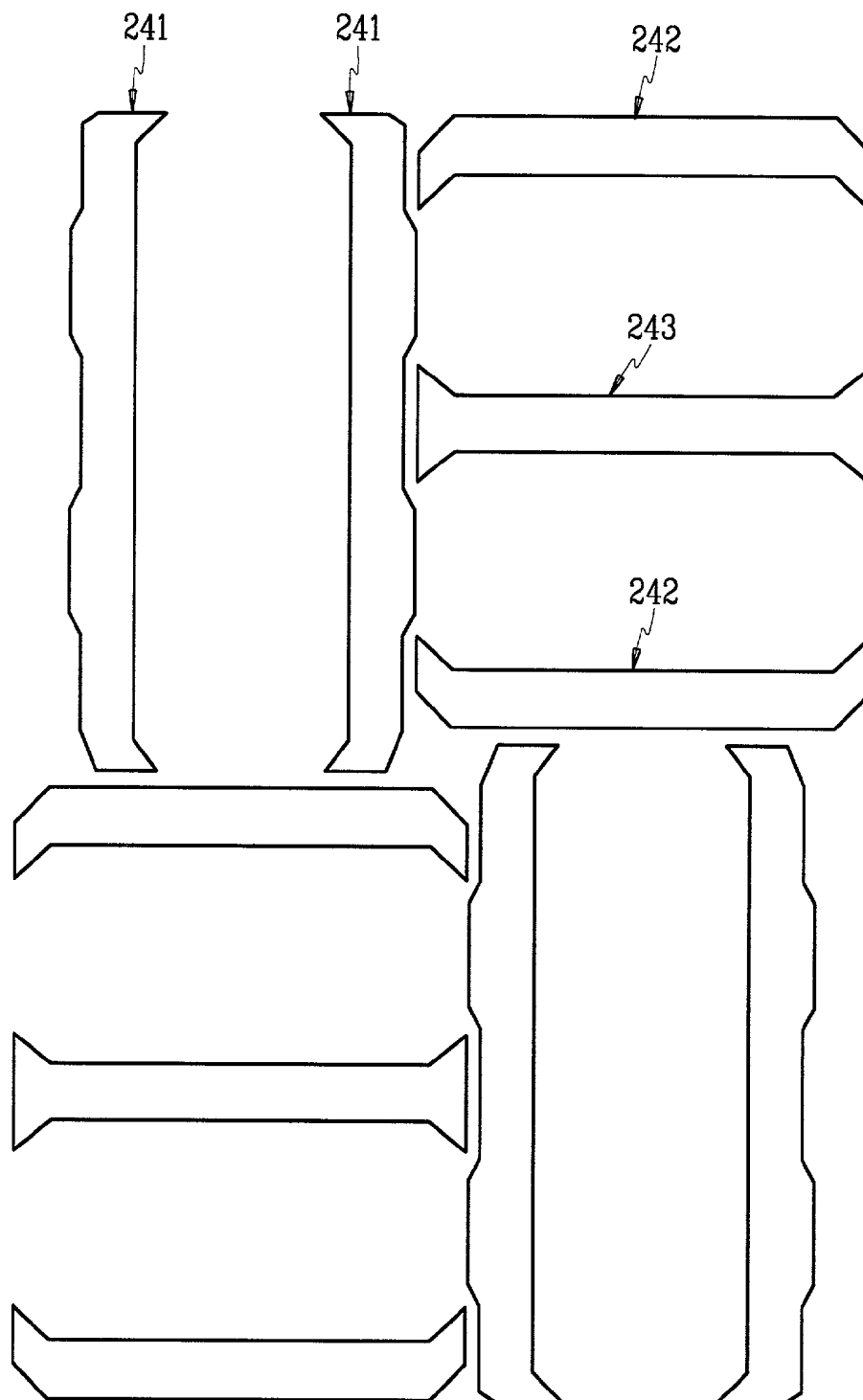


FIG. 3

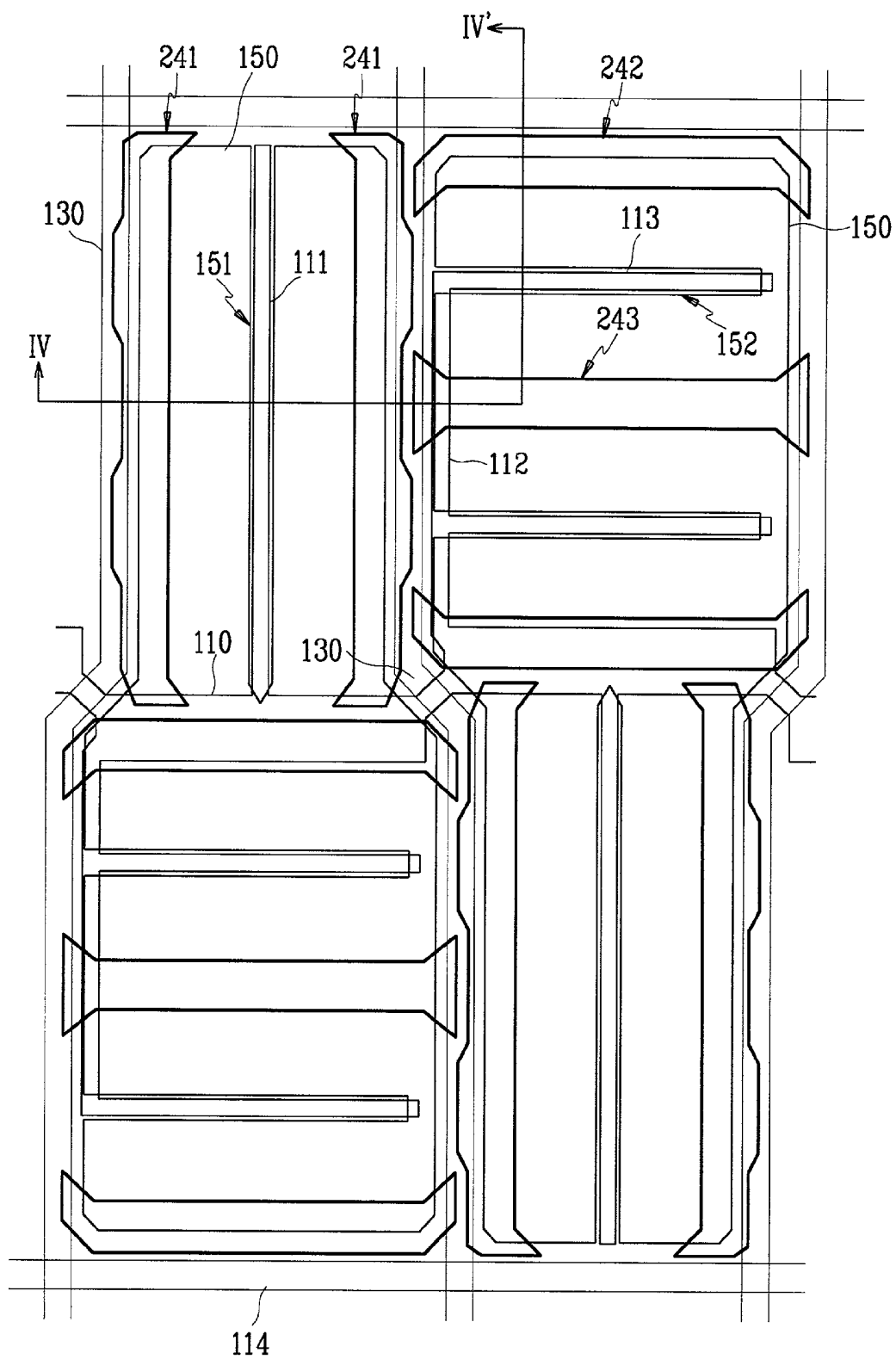


FIG. 4

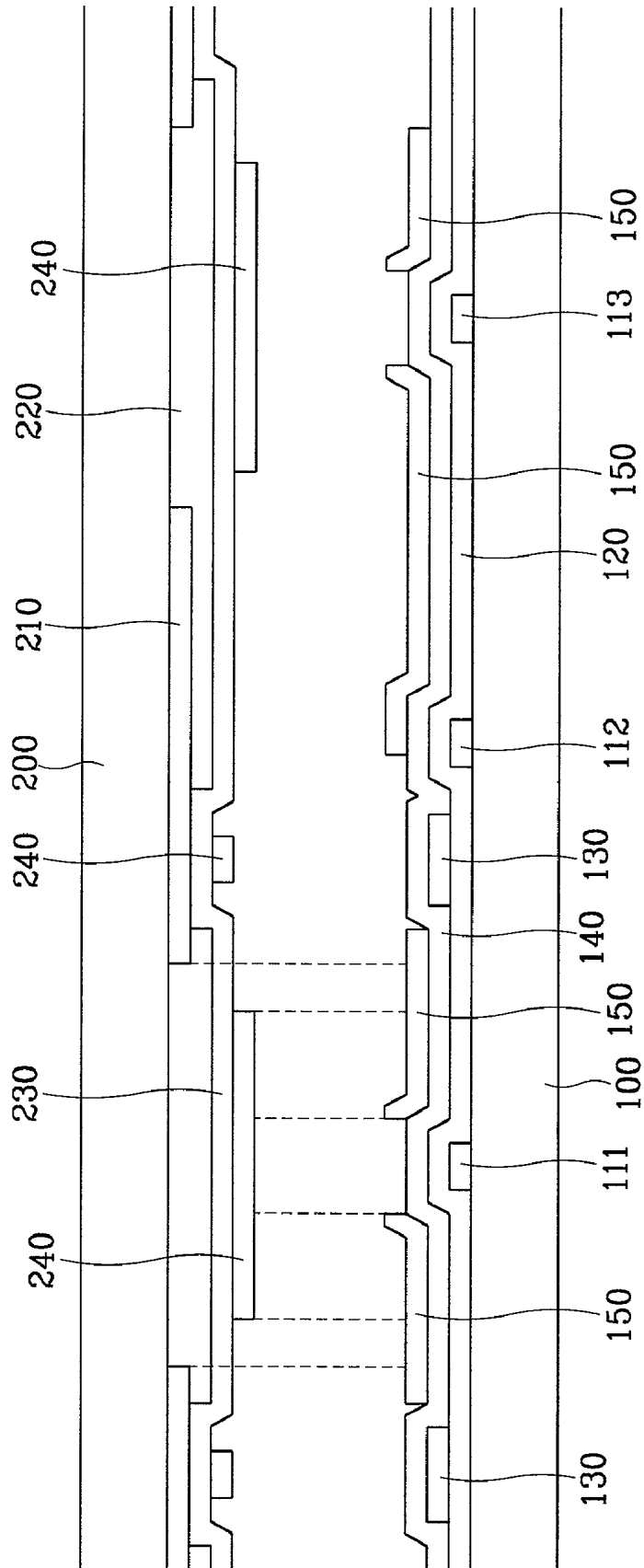


FIG.5

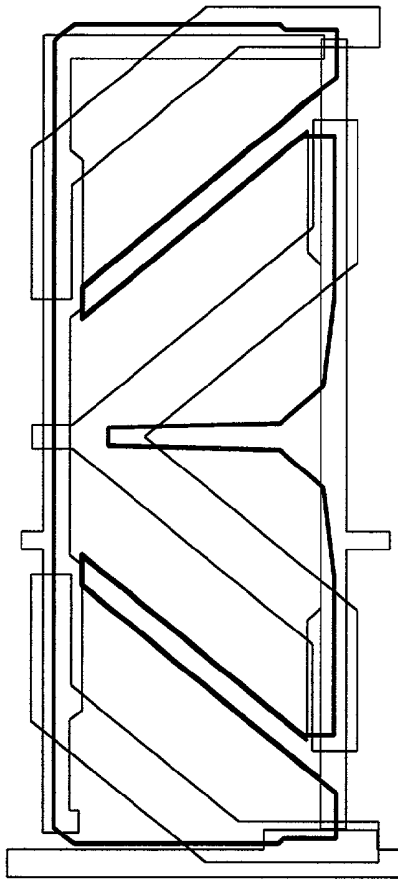


FIG.6

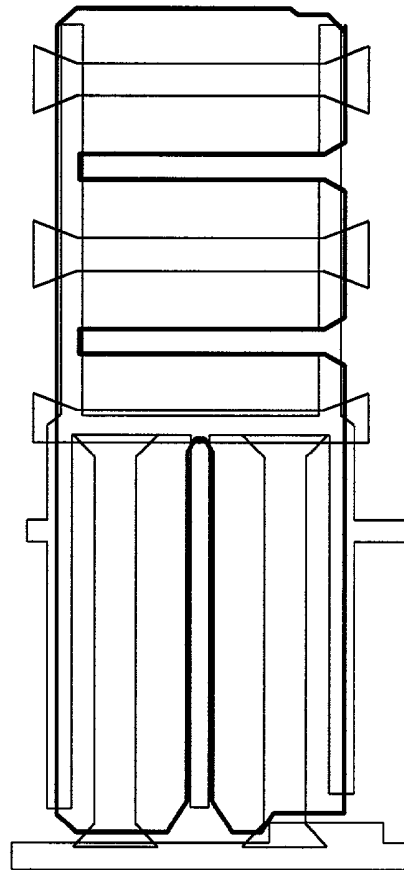


FIG. 7

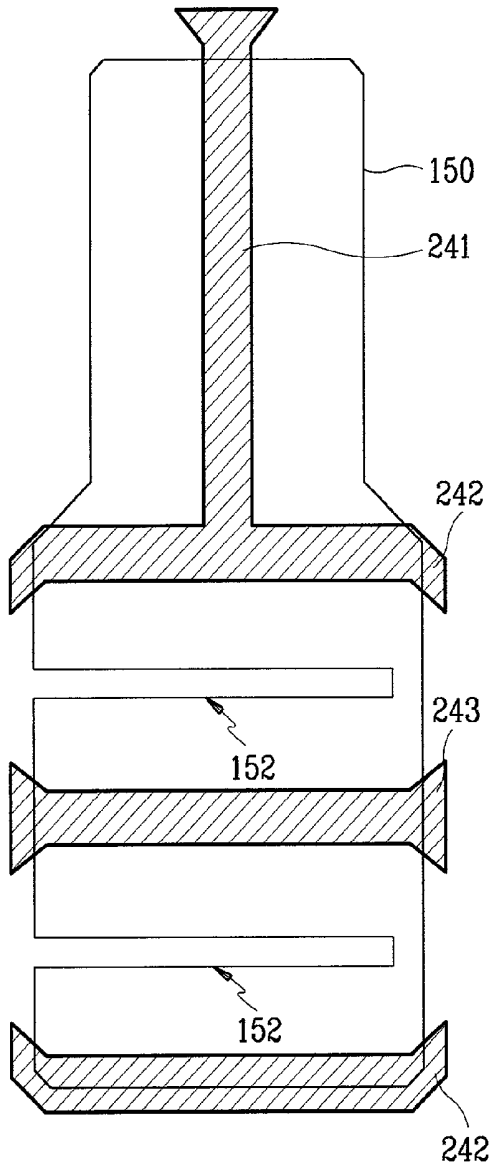
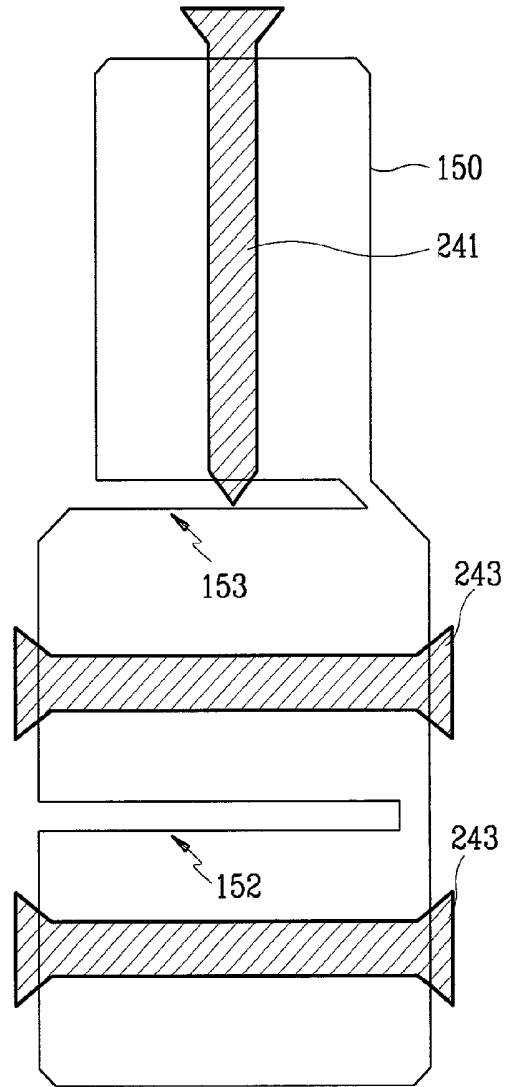


FIG. 8



## LIQUID CRYSTAL DISPLAY AND SUBSTRATE THEREOF

### BACKGROUND OF THE INVENTION

#### [0001] (a) Field of the Invention

[0002] The present invention relates to a liquid crystal display and a substrate thereof, and more particularly, to a vertically aligned liquid crystal display and a substrate thereof in which pixel regions are divided into a plurality of small domains to obtain a wide viewing angle.

#### [0003] (b) Description of the Related Art

[0004] In a liquid crystal display (LCD), liquid crystal material is injected between an upper substrate, on which common electrodes and a color filter are formed, and a lower substrate, on which thin film transistors and pixel electrodes are formed. A voltage of a different potential is applied to the pixel electrodes and common electrodes to form an electric field, thereby varying the alignment of liquid crystal molecules of the liquid crystal material. In this way, the transmittance of incident light is controlled to enable the display of images.

[0005] However, a serious drawback of LCDs is their limited viewing angle. Various methods and configurations have been developed in an attempt to overcome this problem. In one method, the liquid crystal molecules are aligned perpendicularly to the upper and lower substrates, and either a predetermined aperture pattern or protrusions are formed on the pixel electrodes and the opposing common electrodes.

[0006] By forming the aperture patterns on the pixel electrodes and common electrodes, a fringe field is generated. Using the fringe field, a slanting direction of the liquid crystal molecules is controlled such that the viewing angle is increased. When there are formed protrusions on the pixel electrodes and common electrodes, on the other hand, an electric field distorted by the protrusions is used to control the slanting direction of the liquid crystal molecules. In an alternative method, aperture patterns are formed in the pixel electrodes provided on the lower substrate and protrusions are formed on the common electrodes provided on the upper substrate. Using a fringe field generated by the aperture pattern and protrusions, the slanting direction of the liquid crystal molecules is controlled to form domains.

[0007] However, in the above methods, dark portions where light is not transmitted appear in areas where the aperture patterns and protrusions are formed. As a result, if an area occupied by the aperture patterns and protrusions is excessively large, brightness is reduced. If the number of aperture patterns and protrusions is reduced in an attempt to remedy this problem, the ability to control the slanting of the liquid crystal molecules is reduced such that an uneven alignment results. Hence, texture is generated and extends over relatively large areas so that brightness is negatively affected, degrading overall picture quality.

### SUMMARY OF THE INVENTION

[0008] The present invention has been made in an effort to solve the above problems.

[0009] It is an object of the present invention to provide a liquid crystal display in which the size of intervals between

apertures or protrusions is optimized to improve the overall picture quality of the liquid crystal display.

[0010] To achieve the above object, the present invention provides a substrate for a liquid crystal display comprising first wires formed in one direction on the substrate; second wires intersecting and insulated from the first wires; pixel electrodes formed in pixel regions defined by the crossing of the first wires and the second wires; and switching elements connected to the first wires, the second wires and the pixel electrodes, wherein an interval between two adjacent second wires has a predetermined dimension that repeatedly varies from one set of adjacent second wires to the next, and a side of the pixel electrodes adjacent to the second wires is shaped in a pattern identical to the second wires such that the pixel electrodes have a wide portion and a narrow portion.

[0011] According to a feature of the present invention, the pixel electrodes include one or more first apertures dividing the narrow portion following a direction of the second wires, and one or more second apertures dividing the wide portion following a direction of the first wires.

[0012] According to another feature of the present invention, the substrate further comprises storage capacitance wires intersecting and insulated from the second wires, and including first branch wires and second branch wires overlapping the first apertures and the second apertures, respectively.

[0013] According to yet another feature of the present invention, the storage capacitance wires overlap a boundary between the narrow and wide portions of the pixel electrodes.

[0014] According to still yet another feature of the present invention, the first apertures divide the narrow portions of the pixel electrodes into two equal regions, and the second apertures divide the wide portions of the pixel electrodes into three regions, a center region of the three regions having a width twice or more than outer regions surrounding the center region.

[0015] In another aspect, the present invention provides a substrate for a liquid crystal display comprising an insulating substrate; gate lines formed on the insulating substrate; storage capacitance lines formed on the insulating substrate; a gate insulating layer formed over the gate lines and the storage capacitance lines; data lines formed on the gate insulating layer and intersecting the gate lines and the storage capacitance lines; a passivation layer formed over the data lines; and pixel electrodes formed on the passivation layer, the pixel electrodes having curved edges adjacent to the data lines to have a wide portion and a narrow portion.

[0016] According to a feature of the present invention, two adjacent pixel electrodes with data lines provided therebetween are arranged in an opposite manner, that is, alternating wide positions and narrow portions.

[0017] According to another feature of the present invention, the pixel electrodes include one or more first apertures for dividing the narrow portion following a direction of the data lines, and one or more second apertures for dividing the wide portion following a direction of the gate lines.

[0018] According to yet another feature of the present invention, the storage capacitance lines intersect and are

insulated from the data lines, and include first branch lines and second branch lines overlapping the first and second apertures, respectively.

[0019] In yet another aspect, the present invention provides a liquid crystal display comprising a first substrate; first wires formed in one direction on the first substrate; second wires intersecting and insulated from the first wires; pixel electrodes formed in pixel regions defined by the crossing of the first wires and the second wires, and a side of the pixel electrodes adjacent to the second wires is shaped in a pattern identical to the second wires such that the pixel electrodes have a wide portion and a narrow portion; switching elements connected to the first wires, the second wires and the pixel electrodes; a second substrate provided opposing the first substrate; a black matrix formed on the second substrate; common electrodes formed on the second substrate; and domain controlling means for controlling the formation of domains of the pixel electrodes.

[0020] According to a feature of the present invention, the domain controlling means includes a first aperture pattern and a second aperture pattern formed respectively on the pixel electrodes and the common electrodes.

[0021] According to another feature of the present invention, the first aperture pattern includes first apertures that divide the narrow portions of the pixel electrodes into two equal regions and second apertures that divide the wide portions of the pixel electrodes into three regions, and the second aperture pattern includes third apertures overlapping the sides of the pixel electrodes in the narrow portions adjacent to the second wires, fourth apertures overlapping border regions of the wide portions of the pixel electrodes that are perpendicular to the second wires, and fifth apertures positioned in center portions between two fourth apertures.

#### BRIEF DESCRIPTION OF THE DRAWINGS

[0022] The accompanying drawings, which are incorporated in and constitute a part of the specification, illustrate an embodiment of the invention, and, together with the description, serve to explain the principles of the invention:

[0023] FIG. 1 is a schematic view of a thin film transistor for a liquid crystal display according to a first preferred embodiment of the present invention;

[0024] FIG. 2 is a schematic view of aperture patterns formed on common electrodes of a liquid crystal display according to a first preferred embodiment of the present invention;

[0025] FIG. 3 is schematic plan view of pixel electrodes and aperture patterns of a liquid crystal display according to a first preferred embodiment of the present invention;

[0026] FIG. 4 is a schematic view taken along line IV-IV' of FIG. 3;

[0027] FIGS. 5 and 6 are schematic views showing examples of aperture patterns for increasing a viewing angle of a liquid crystal display;

[0028] FIG. 7 is a schematic plan view of a pixel electrode and an aperture pattern for a liquid crystal display according to a second preferred embodiment of the present invention; and

[0029] FIG. 8 is a schematic plan view of a pixel electrode and an aperture pattern for a liquid crystal display according to a third preferred embodiment of the present invention.

#### DETAILED DESCRIPTION OF THE PREFERRED EMBODIMENTS

[0030] Preferred embodiments of the present invention will now be described in detail with reference to the accompanying drawings.

[0031] FIG. 1 shows a schematic view of a thin film transistor for a liquid crystal display according to a first preferred embodiment of the present invention; FIG. 2 is a schematic view of aperture patterns formed on common electrodes of a liquid crystal display according to a first preferred embodiment of the present invention; FIG. 3 is schematic plan view of pixel electrodes and aperture patterns of a liquid crystal display according to a first preferred embodiment of the present invention; and FIG. 4 is a schematic view taken along line IV-IV' of FIG. 3.

[0032] With reference to the drawings, gate lines 114 are formed horizontally (in the drawings) on a lower substrate 100. A storage capacitance line 110 is formed in the same direction as the gate lines 114. That is, the storage capacitance line 110 includes thick portions formed above and below an imaginary horizontal line and connected by a connecting portion narrower than the thick portions. Vertically-extended first and second branch electrodes 111 and 112 are connected to the storage capacitance lines 110, and a third branch electrode 113 is connected to the second branch electrode 112, the third branch electrode 113 extending in a horizontal direction.

[0033] Formed over the gate lines 114 and the storage capacitance wiring 110, 111, 112 and 113 is a gate insulating layer 120. Data lines 130 are formed over the gate insulating layer 120 in a vertical direction (in the drawings). That is, each data line 130 has an upper and lower portion, and the upper portion is formed vertically on one side of an imaginary vertical line, while the lower portion is formed vertically on an opposing side of the same vertical line. The upper and lower portions of the data lines 130 are connected by connection portions. Preferably, a distance between imaginary lines extending from adjacent vertical edges of the data lines 130 is 3  $\mu\text{m}$ ~20  $\mu\text{m}$ . Also, the data lines 130 are formed over the gate insulating layer 120 in an alternating manner, that is, with the upper and lower portions provided alternately to the right and left of the imaginary vertical lines. Accordingly, spaces between the data lines 130 vary between narrow positions and wide portions. The data lines 130 are formed crossing the storage capacitance lines 110 and the gate lines 114, with the crossing of the data lines 130 and the storage capacitance lines 110 occurring at the connection portions.

[0034] Formed over the data lines 130 is a passivation layer 140. Further, pixel electrodes 150 are formed on the passivation layer 140 and made of ITO (indium tin oxide) or IZO (indium zinc oxide). In more detail, a single pixel electrode 150 is provided in each pixel region defined by the crossing of a pair of gate lines 114 and data lines 130. Also, the pixel electrodes 150 are formed corresponding to the shape of the pixel regions, that is, corresponding to the alternating wide areas and narrow areas of the pixel regions. In the narrow areas of the pixel regions, the pixel electrodes

**150** have a first aperture **151** extending vertically substantially the entire length of the narrow area of the pixel regions. In the wide areas of the pixel regions, the pixel electrodes **150** have a pair of second apertures **152**, which extend horizontally. The first apertures **151** divide the pixel electrodes **150** in the narrow areas of the pixel regions roughly in half, and the second apertures **152** divide the pixel electrodes **150** in the wide areas of the pixel regions into three regions—two outer regions and a center region. The center region has a width approximately twice that of the outer regions. Further, the first apertures **151** overlap the first branch electrodes **111** of the storage capacitance line **110**, and the second apertures **152** overlap the third branch electrodes **113** of the storage capacitance line **110**.

[0035] A thin film transistor (not shown) is provided in each pixel region corresponding to the pixel electrodes **150**. A gate electrode of the thin film transistors (TFTs) is connected to the gate lines **114**, a source electrode of the TFTs is connected to the data lines **130**, and a drain electrode of the TFTs is connected to the pixel electrodes **150**. The source electrodes and drain electrodes are connected by a semiconductor layer, which forms channels.

[0036] A thin film transistor substrate and an opposing upper substrate will now be described with reference to FIGS. 2 and 4.

[0037] Formed on an inner surface of an insulation substrate **200** (or upper substrate) is a black matrix **210**, and a red, green, blue color filter **220** is formed on the black matrix **210**. Further, a passivation layer **230** is formed over the color filter **220**, and a common electrode **240** is formed on the passivation layer **230**. The common electrode **240** is made of a transparent conductive material such as ITO or IZO. An aperture pattern as shown in FIG. 2 is formed on the common electrode **240**. The aperture pattern includes third apertures **241** extending vertically (in the drawing), and fourth and fifth apertures **242** and **243** extending horizontally (in the drawing), each fifth aperture **243** being formed between a pair of fourth apertures **242**. The fourth and fifth apertures **242** and **243** are provided to the left and right of the third apertures **241**, and outer edges of the third apertures **241** are indented corresponding to ends of the fourth and fifth apertures **242** and **243** to prevent contact between these two elements.

[0038] A structure of the thin film transistor substrate **100** and the upper substrate **200** in a combined state will now be described with reference to FIGS. 3 and 4.

[0039] The third apertures **241** overlap left and right sides of the narrow portions of the pixel electrodes **150**, and the fourth apertures **242** overlap upper and lower edges of the wide portions of the pixel electrodes **150**. The fifth apertures **243** are positioned substantially at a center area of the wide portions of the pixel electrodes **150**. Accordingly, the narrow portions of the pixel electrodes **150** are divided into two small domains by the first apertures **151** and the third apertures **241**, and the wide portions of the pixel electrodes **150** are divided into four small domains by the second apertures **152** and the fourth and fifth apertures **242** and **243**. It is preferable that a width of the small domains is  $20 \pm 5 \mu\text{m}$ . If the width of the small domains is too small, an aperture ratio is reduced, while too large domains weaken a fringe field and make it difficult to control the slanting direction of the liquid crystal molecules.

[0040] By forming the pixel electrodes **150** together with the apertures **151**, **152**, **241**, **242** and **243** for the division of the pixel electrodes **150** into domains as described above, an aperture ratio that is significantly improved over the LCD employing aperture patterns as shown in FIGS. 5 and 6, for example, is obtained. That is, aperture ratios of 34% and 36% are realized with the aperture patterns of FIGS. 5 and 6, respectively, while an aperture ratio of 48% is realized with the aperture pattern according to the first preferred embodiment of the present invention. This is a result of the shape change in the pixel electrodes such that the width of the vertical and horizontal domains can be adjusted.

[0041] Further, with reference to FIGS. 5 and 6, if an H-shaped common electrode wire is arranged incorrectly during manufacture, a portion of the common electrode wire becomes present in an area of the pixel region through which light is transmitted. This decreases the aperture ratio. In the LCD of the present invention, on the other hand, the H-shaped common electrode wire is not used in order to prevent the occurrence of this problem. Further, the majority of the apertures **241**, **242** and **243** formed on the common electrode are arranged at edges of the pixel regions to minimize a reduction in the aperture ratio. That is, the third apertures **241** are arranged overlapping the left and right sides of the pixel electrodes **150**. The source electrodes and drain electrodes are connected by a semiconductor layer, which forms channels.

[0042] A thin film transistor substrate and an opposing upper substrate will now be described with reference to FIGS. 2 and 4.

[0043] Formed on an inner surface of an insulation substrate **200** (or upper substrate) is a black matrix **210**, and a red, green, blue color filter **220** is formed on the black matrix **210**. Further, a passivation layer **230** is formed over the color filter **220**, and a common electrode **240** is formed on the passivation layer **230**. The common electrode **240** is made of a transparent conductive material such as ITO or IZO. An aperture pattern as shown in FIG. 2 is formed on the common electrode **240**. The aperture pattern includes third apertures **241** extending vertically (in the drawing), and fourth and fifth apertures **242** and **243** extending horizontally (in the drawing), each fifth aperture **243** being formed between a pair of fourth apertures **242**. The fourth and fifth apertures **242** and **243** are provided to the left and right of the third apertures **241**, and outer edges of the third apertures **241** are indented corresponding to ends of the fourth and fifth apertures **242** and **243** to prevent contact between these two elements.

[0044] A structure of the thin film transistor substrate **100** and the upper substrate **200** in a combined state will now be described with reference to FIGS. 3 and 4.

[0045] The third apertures **241** overlap left and right sides of the narrow portions of the pixel electrodes **150**, and the fourth apertures **242** overlap upper and lower edges of the wide portions of the pixel electrodes **150**. The fifth apertures **243** are positioned substantially at a center area of the wide portions of the pixel electrodes **150**. Accordingly, the narrow portions of the pixel electrodes **150** are divided into two small fourth apertures **242**, and the third aperture **241** is connected to one of the two fourth apertures **242**.

[0046] In a state where upper substrate and lower substrate of the LCD are positioned in an opposing manner, the third

aperture **241** divides the narrow portion of the pixel electrode **150** into two equal regions, and the fourth apertures **242** are positioned at upper and lower boundaries of the wide portion of the pixel electrode **150**. Further, the fifth aperture **243** is positioned dividing the wide portion of the pixel electrode **150** into two equal regions. Accordingly, the narrow portion of the pixel electrode **150** is divided into two small domains by the third aperture **241**, and the wide portion of the pixel electrode **150** is divided into four small domains by the second apertures **152**, the fourth apertures **242**, and the fifth aperture **243**. It is preferable that a width of the small domains is  $20 \pm 5 \mu\text{m}$ . If the width of the small domains is too small, an aperture ratio is reduced, while too large domains weaken a fringe field and make it difficult to control the slanting direction of the liquid crystal molecules.

[0047] FIG. 8 shows a schematic plan view of a pixel electrode and an aperture pattern for a liquid crystal display according to a third preferred embodiment of the present invention. The LCD according to the third embodiment is identical to that of the first embodiment except for the shape of various elements. Accordingly, the same reference numerals will be used. Further, although only a single pixel region is shown in the drawing, it is to be assumed that each pixel region is configured in the same manner.

[0048] In the third embodiment, a pixel electrode **150** is divided into a narrow portion and a wide portion, identical to the first embodiment. A second aperture **152** is formed horizontally (in the drawing) in the wide portion of the pixel electrode **150**, and a sixth aperture **153** is formed at the boundary between the narrow portion and the wide portion of the pixel electrode **150**. The second aperture **152** divides the wide portion of the pixel electrode **150** into two regions. Apertures formed on a common electrode (not shown) opposing the pixel electrode **150** include a third aperture **241** extending vertically (in the drawing), and two fifth apertures **243** extending horizontally (in the drawing). The fifth apertures **243** are evenly spaced in the region corresponding to the wide portion of the pixel electrode **150**.

[0049] In a state where upper substrate and lower substrate of the LCD are positioned in an opposing manner, the third aperture **241** divides the narrow portion of the pixel electrode **150** into two equal regions, and the fifth apertures **243** divide the wide portion of the pixel electrode **150** into three equal regions. Accordingly, the narrow portion of the pixel electrode **150** is divided into two small domains by the third aperture **241**, and the wide portion of the pixel electrode **150** is divided into four small domains by the second apertures **152** and fifth apertures **243**. It is preferable that a width of the small domains is  $20 \pm 5 \mu\text{m}$ . If the width of the small domains is too small, an aperture ratio is reduced, while too large domains weaken a fringe field and make it difficult to control a slanting direction of the liquid crystal molecules.

[0050] In the LCD of the present invention structured as in the above, an aperture pattern is provided to optimize the intervals between apertures such that a wide viewing angle is obtained and the overall picture quality of the LCD is enhanced.

[0051] Although preferred embodiments of the present invention have been described in detail hereinabove, it should be clearly understood that many variations and/or modifications of the basic inventive concepts herein taught which may appear to those skilled in the present art will still

fall within the spirit and scope of the present invention, as defined in the appended claims.

[0052] For example, it is possible to form protrusions instead of the apertures. It is also possible to form a protrusion-aperture mixture, for example, apertures on the pixel electrodes and protrusions on the common electrodes.

What is claimed is:

1. A substrate for a liquid crystal display, comprising:

first wires formed in one direction on the substrate;

second wires intersecting and insulated from the first wires;

pixel electrodes formed in pixel regions defined by the first wires and the second wires; and

switching elements connected to the first wires, the second wires and the pixel electrodes,

wherein an interval between two adjacent second wires has a predetermined dimension that repeatedly varies from one set of adjacent second wires to the next, and a side of the pixel electrodes adjacent to the second wires is shaped in a pattern identical to the second wires such that the pixel electrodes have a wide portion and a narrow portion.

2. The substrate for a liquid crystal display of claim 1, wherein the pixel electrodes include one or more first apertures for dividing the narrow portion following a direction of the second wires, and one or more second apertures for dividing the wide portion following a direction of the first wires.

3. The substrate for a liquid crystal display of claim 2, further comprising storage capacitance wires intersecting and insulated from the second wires, and including first branch wires and second branch wires overlapping the first apertures and the second apertures, respectively.

4. The substrate for a liquid crystal display of claim 3, wherein the storage capacitance wires overlap a boundary of the narrow portion and the wide portion of the pixel electrodes.

5. The substrate for a liquid crystal display of claim 2, wherein the first apertures divide the narrow portions of the pixel electrodes into two equal regions, and the second apertures divide the wide portions of the pixel electrodes into three regions, a center region of the three regions having a width twice or longer than outer regions surrounding the center region.

6. A substrate for a liquid crystal display, comprising:

an insulating substrate;

gate lines formed on the insulating substrate;

storage capacitance lines formed on the insulating substrate;

a gate insulating layer formed over the gate lines and the storage capacitance lines;

data lines formed on the gate insulating layer and intersecting the gate lines and the storage capacitance lines;

a passivation layer formed over the data lines; and

pixel electrodes formed on the passivation layer, the pixel electrodes having curved edges adjacent to the data lines to form a wide portion and a narrow portion.

7. The substrate for a liquid crystal display of claim 6, wherein two adjacent pixel electrodes are arranged alternatively, changing the positions of the wide portion and the narrow portion.

8. The substrate for a liquid crystal display of claim 7, wherein the pixel electrodes include one or more first apertures for dividing the narrow portion following a direction of the data lines, and one or more second apertures for dividing the wide portion following a direction of the gate lines.

9. The substrate for a liquid crystal display of claim 8, wherein the storage capacitance lines intersect and are insulated from the data lines, and include first branch lines and second branch lines overlapping the first aperture and the second aperture, respectively.

10. A liquid crystal display, comprising:

a first substrate;

first wires formed in one direction on the first substrate;

second wires intersecting and insulated from the first wires;

pixel electrodes formed in pixel regions defined by the first wires and the second wires, and a side of the pixel electrodes adjacent to the second wires is shaped in a pattern identical to the second wires such that the pixel electrodes have a wide portion and a narrow portion;

switching elements connected to the first wires, the second wires and the pixel electrodes;

a second substrate provided opposing the first substrate;

a black matrix formed on the second substrate;

common electrodes formed on the second substrate; and

domain controlling means for controlling the formation of domains of the pixel electrodes.

11. The liquid crystal display of claim 10, wherein the domain controlling means include a first aperture pattern and a second aperture pattern formed respectively on the pixel electrodes and the common electrodes.

12. The liquid crystal display of claim 11, wherein the first aperture pattern includes first apertures that divide the narrow portions of the pixel electrodes into two equal regions and second apertures that divide the wide portions of the pixel electrodes into three regions, and the second aperture pattern includes third apertures overlapping the sides of the pixel electrodes in the narrow portions adjacent to the second wires, fourth apertures overlapping border regions of the wide portions of the pixel electrodes that are perpendicular to the second wires, and fifth apertures positioned in a center portions between two fourth apertures.

\* \* \* \* \*

专利名称(译)	液晶显示器及其基板		
公开(公告)号	<a href="#">US20020039164A1</a>	公开(公告)日	2002-04-04
申请号	US09/935158	申请日	2001-08-23
[标]申请(专利权)人(译)	SONG JANG KUN		
申请(专利权)人(译)	SONG JANG-KUN		
当前申请(专利权)人(译)	SONG JANG-KUN		
[标]发明人	SONG JANG KUN		
发明人	SONG, JANG-KUN		
IPC分类号	G02F1/1333 G02F1/1343 G02F1/1362 G02F1/139		
CPC分类号	G02F1/133707 G02F1/1393 G02F1/136286 G02F1/134309		
优先权	1020000071681 2000-11-29 KR		
其他公开文献	US6870588		
外部链接	<a href="#">Espacenet</a> <a href="#">USPTO</a>		

摘要(译)

公开了一种液晶显示器及其基板。基板包括在基板上沿一个方向形成的第一导线;第二导线与第一导线交叉并绝缘;像素电极形成在由第一导线和第二导线限定的像素区域中;连接到第一导线,第二导线和像素电极的开关元件,其中两个相邻的第二导线之间的间隔具有从一组相邻的第二导线到下一个导线重复变化的预定尺寸,以及像素电极的一侧与第二导线相邻的导线的形状与第二导线的形状相同,使得像素电极具有宽的部分和窄的部分。液晶显示器包括第一基板;第一导线在第一基板上沿一个方向形成;第二导线与第一导线交叉并绝缘;像素电极形成在由第一导线和第二导线交叉限定的像素区域中,并且像素电极的与第二导线相邻的一侧形成为与第二导线相同的图案,使得像素电极具有宽的部分狭窄的部分;开关元件连接到第一导线,第二导线和像素电极;与第一基板相对设置的第二基板;形成在第二基板上的黑矩阵;公共电极形成在第二基板上;和域控制装置,用于控制像素电极的畴的形成。

