



(19) **United States**

(12) **Patent Application Publication**

(10) **Pub. No.: US 2002/0054260 A1**

Maeda et al.

(43) **Pub. Date:**

May 9, 2002

(54) **LIQUID CRYSTAL DISPLAY AND ELECTRONIC APPARATUS INCORPORATING THE LIQUID CRYSTAL DISPLAY**

(30) **Foreign Application Priority Data**

Nov. 7, 2000 (JP)..... 2000-339396

(75) **Inventors: Tsuyoshi Maeda, Ryuo-cho (JP); Osamu Okumura, Chino-shi (JP)**

(51) **Int. Cl.⁷ G02F 1/1335**

(52) **U.S. Cl. 349/117**

Publication Classification

Correspondence Address:
OLIFF & BERRIDGE, PLC
P.O. BOX 19928
ALEXANDRIA, VA 22320 (US)

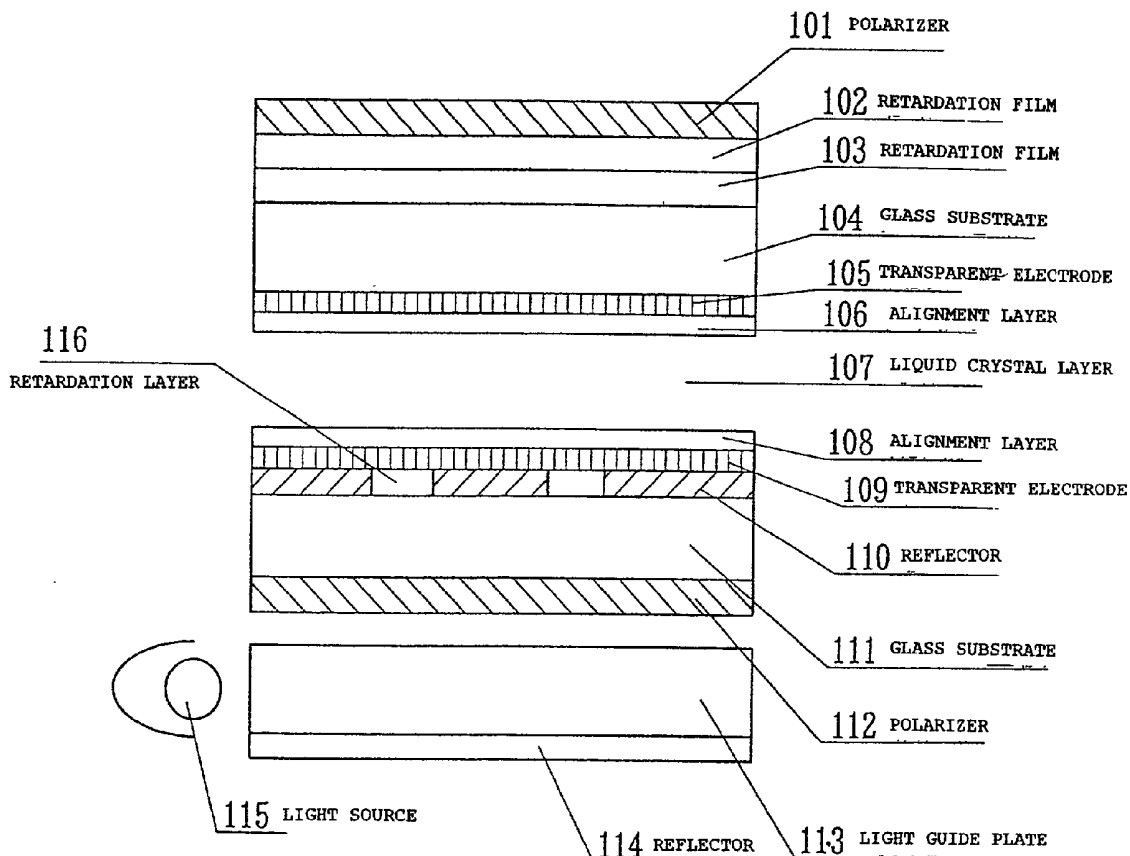
(57) **ABSTRACT**

The invention provides a transmissive color liquid crystal display that provides a light transmissive display and reduces power consumption without reducing the brightness of the reflective display. In the liquid crystal display with a liquid crystal layer disposed between a pair of substrates, a reflective display unit and a transmissive display unit are formed in one pixel, and a retardation layer including a polymer liquid crystal and having a retardation of roughly 1/4 wavelength is formed in the transmissive display unit.

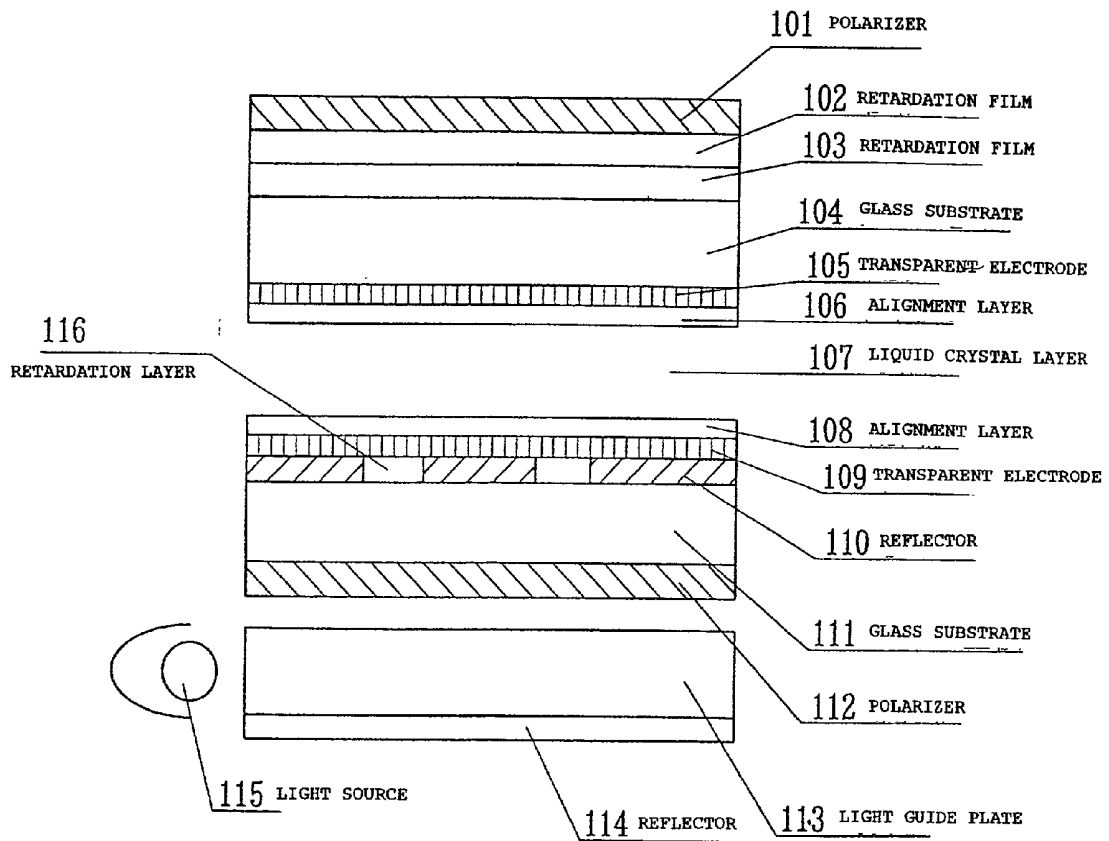
(73) **Assignee: SEIKO EPSON CORPORATION, TOKYO (JP)**

(21) **Appl. No.: 09/948,428**

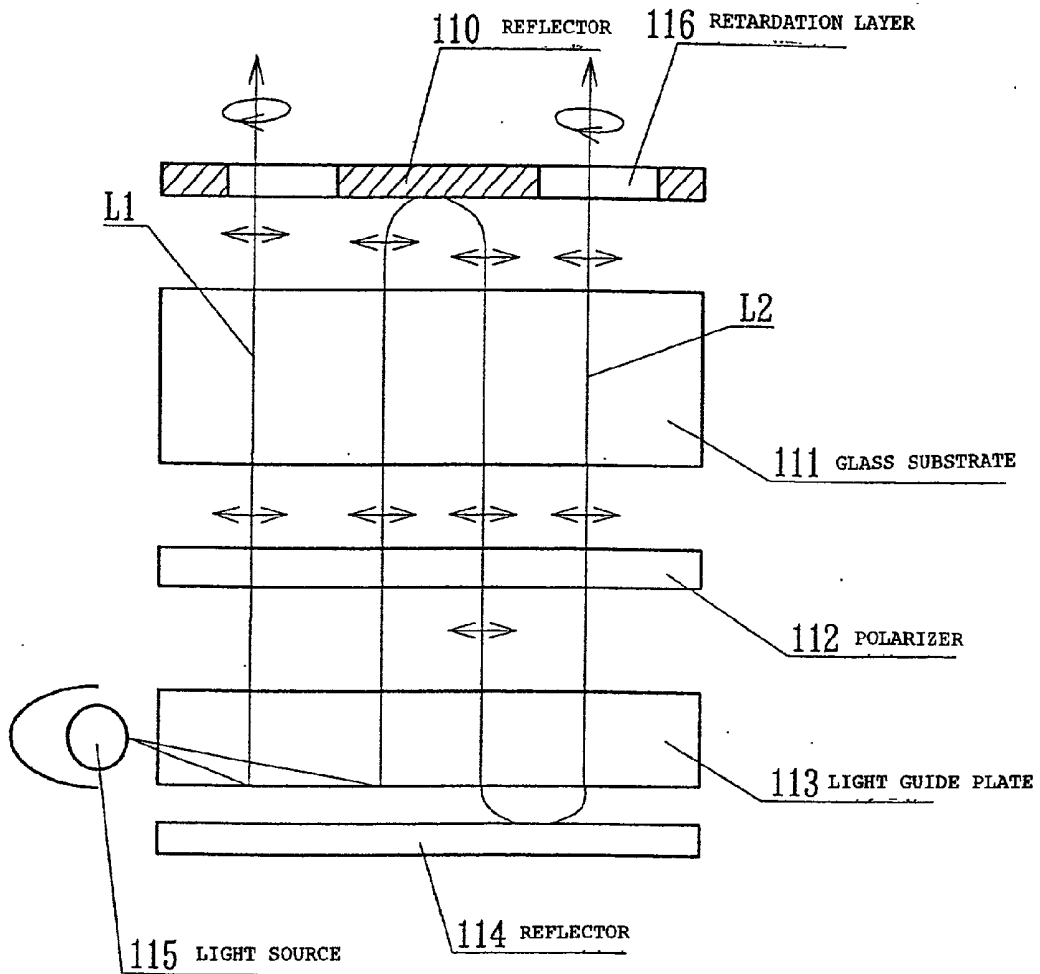
(22) **Filed: Sep. 12, 2001**



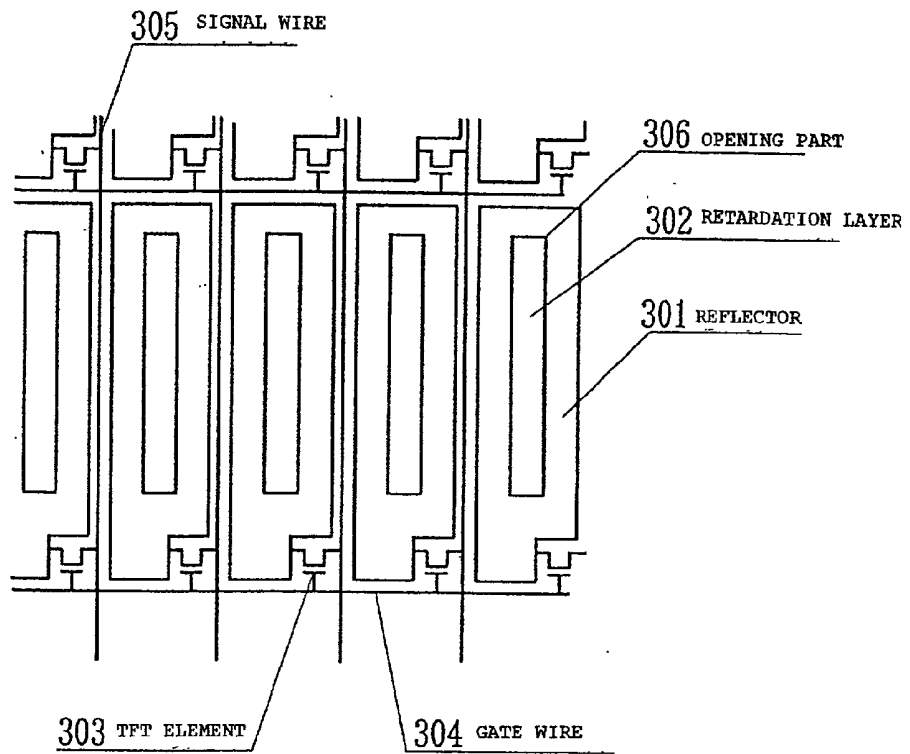
[FIG. 1]



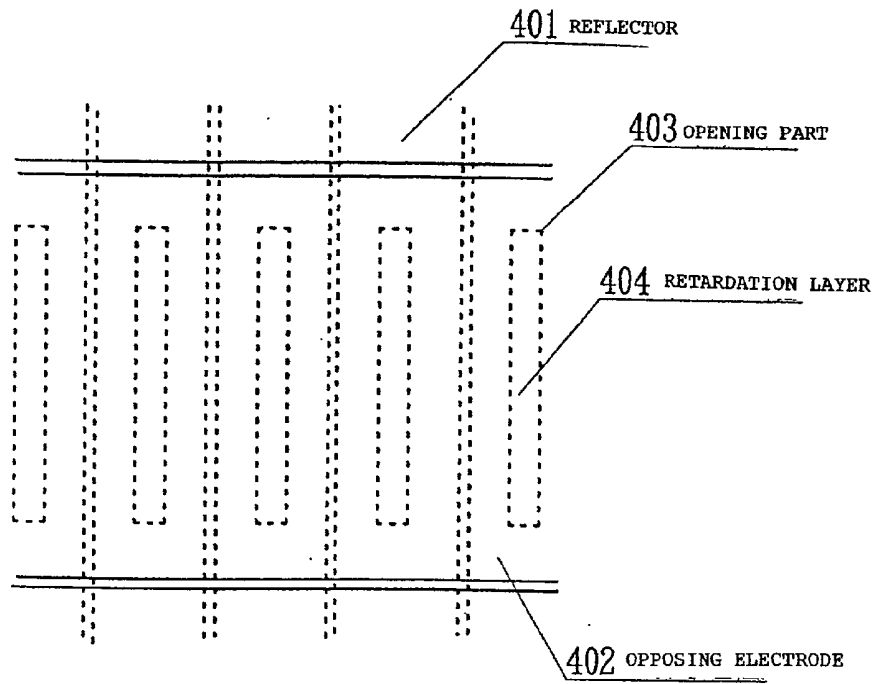
[FIG. 2]



[FIG. 3]

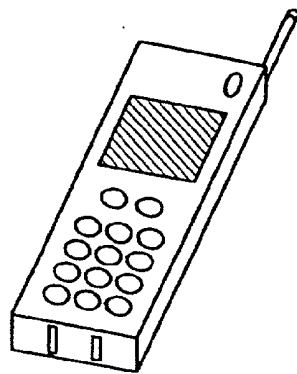


[FIG. 4]

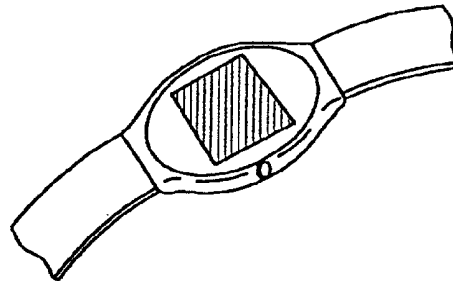


[FIG. 5]

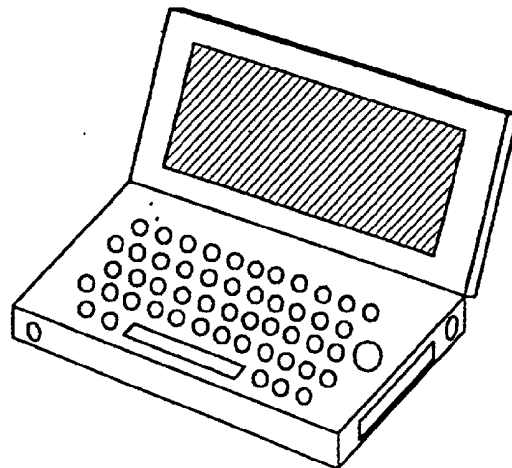
(a)



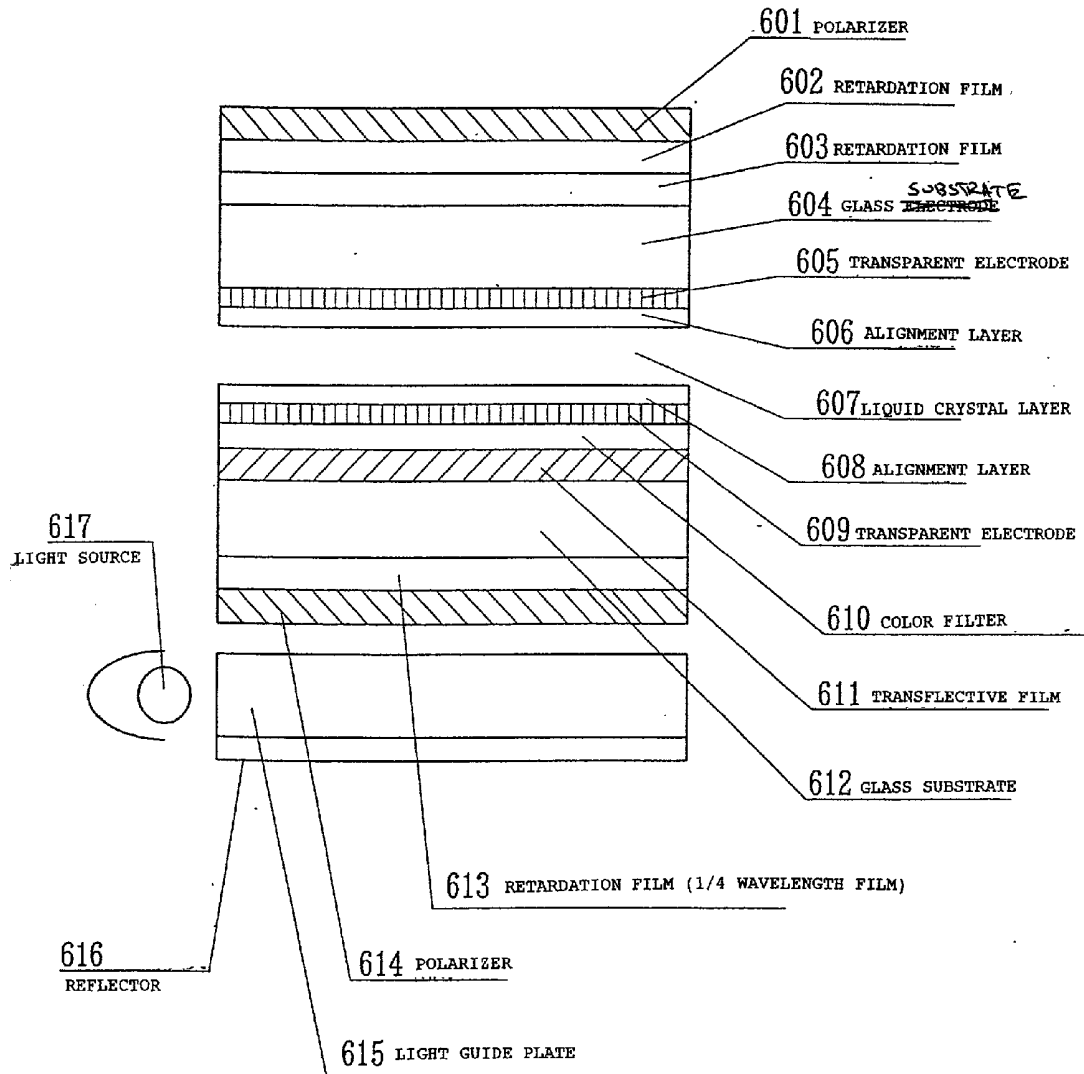
(b)



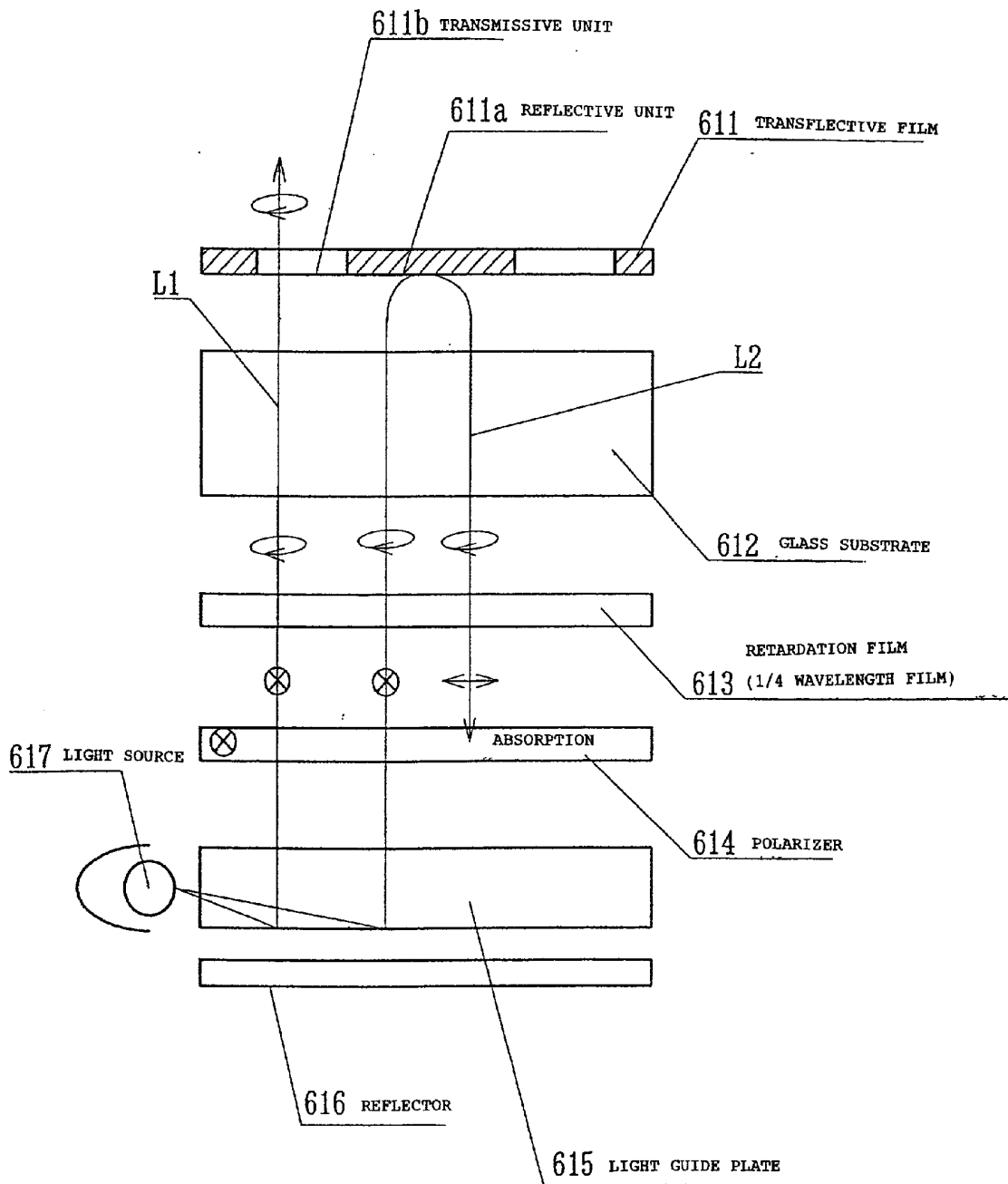
(c)



[FIG. 6]



[FIG. 7]



LIQUID CRYSTAL DISPLAY AND ELECTRONIC APPARATUS INCORPORATING THE LIQUID CRYSTAL DISPLAY

BACKGROUND OF THE INVENTION

[0001] 1. Field of Invention

[0002] The present invention relates to a liquid crystal display and an electronic apparatus that incorporates the liquid crystal display, and more specifically, the invention relates to a transreflective liquid crystal display.

[0003] 2. Description of Related Art

[0004] Reflective liquid crystal displays have been employed as display units or the like in portable electronic apparatus. A problem occurs in that the display is difficult to see in a dark location, since the display relies on use of external light, such as natural light and artificial light. Thus, liquid crystal displays, which use external light in a bright place in the same way as general reflective liquid crystal displays, can still be used in a dark place by using a light of an illuminating device (hereinafter, referred to as a "backlight") on the reverse side of a liquid crystal cell. These displays are referred to as transreflective liquid crystal displays.

[0005] A transreflective liquid crystal display can be provided by, for example, converting a reflective liquid crystal display having an external reflector. This is accomplished by replacing a conventional reflector that has only a reflective function with a "transreflective film" that has both a light transmissive function and a light reflective function. The transreflective film can include a material with fine pearl pigments mixed therein, a metal film having an aperture for light transmission, or a metal film of very small thickness.

[0006] In addition, in recent years, as portable apparatus and OA (Office Automation) apparatus have been developed, there has been a growing demand for color liquid crystal displays. An even greater demand has been experienced for color liquid crystal displays and apparatus using reflective liquid crystal displays. However, when simply combining the transreflective liquid crystal display of the above configuration with a color filter, the transreflective film is disposed on the outer surface of the liquid crystal cell, and the color filter is disposed on the inner surface of the liquid crystal cell. Since a thick transparent substrate is interposed between the liquid crystal layer or the color filter and the transreflective film, problems occur, such that a double reflection, a blur in the display, color mixing, etc. caused by parallax are generated, and a sufficient display quality cannot be obtained. Hereinafter, the surface on the liquid crystal layer side of each component of the liquid crystal layer is referred to as the "inner surface", and the surface on the side opposite to the liquid crystal layer is referred to as the "outer surface".

[0007] In order to solve this problem, it has been proposed to provide a transreflective liquid crystal display with a transreflective film disposed on the inner surface side of the liquid crystal cell. FIG. 6 is a cross-sectional view showing one example of these liquid crystal displays. Two glass substrates 604, 612 provided with transparent electrodes 605, 609 are disposed on the inner surfaces facing each other, and a liquid crystal layer 607 is held between the glass substrates 604, 612 via alignment layers 606, 608 to form the

liquid crystal cell. A transreflective film 611, the color filter 610, the transparent electrode 609 and the alignment layer 608 are successively provided on the inner surface side of the lower glass substrate 612. In this configuration, the liquid crystal layer 607, the color filter 610 and the transreflective film 611 are close to each other. The above problems, including the double reflection, the blur and the color mixture, can be solved with this structure.

[0008] Further, two retardation films 602, 603 and a polarizer 601 are successively provided on the outer surface side of the upper glass substrate 604.

[0009] Various parts to realize the transmissive display are disposed on the outer surface side of the lower glass substrate 612. For example, a $\frac{1}{4}$ wavelength film 613 and a polarizer 614 are disposed on the outer surface of the lower glass substrate 612, and a backlight is disposed outside thereof. The backlight has a light source 617, a light guide plate 615 and a reflector 616. In the case of the reflective display, one polarizer 601 on the upper side has the functions of both a polarizer and an analyzer. On the other hand, in the case of the transmissive display, the polarizer 614 on the lower side functions as the polarizer, and the polarizer 601 on the upper side functions as the analyzer.

[0010] The reason for using the $\frac{1}{4}$ wavelength film 613 is described below. Firstly, in the case of the reflective display, the light incident from the upper surface side of the liquid crystal cell, and transmitted through the liquid crystal layer, is preferably formed into a circularly polarized wave, or an elliptically polarized wave with high ellipticity, in a dark display condition, and formed into a plane-polarized wave, or an elliptically polarized wave with low ellipticity, in a bright display condition when it is reflected by the transreflective film. This is because the circularly polarized wave, or the elliptically polarized wave with high ellipticity, reflected by the transreflective film in the dark display condition, is formed into the plane-polarized wave, or the elliptically polarized wave with low ellipticity, orthogonal to the axis of transmission of the polarizer on the upper surface side of the liquid crystal cell through the re-transmission in the liquid crystal layer. This wave is absorbed in the polarizer. The dark display becomes darker, and an excellent contrast characteristic can be realized.

[0011] On the other hand, to realize a transmissive mode display similar to that of a reflective mode display, it is necessary that the light from the backlight is in the same polarized state as that in the reflective display when the light is transmitted through the transreflective film. Specifically, the light is a circularly polarized wave or an elliptically polarized wave with high ellipticity. Thus, the $\frac{1}{4}$ wavelength film is disposed between the polarizer and the transreflective film to convert the plane-polarized wave after being transmitted through the polarizer into a circularly polarized wave, or an elliptically polarized wave with high ellipticity, when the light is transmitted through the transreflective film after being emitted from the backlight.

[0012] In the above transreflective liquid crystal display, in order to ensure the brightness of the reflective mode display making use of the reflected external light, the area of the aperture is set to be at most 10-25% of the whole area thereof in the case where a transreflective film, having an aperture for light transmission, is provided therein, and the external light is reflected by the remaining area. Thus, in the transmissive

mode, only a small portion of the light emitted from the backlight, and reaching the transreflective film, is transmitted through the transreflective film, and the remaining light is reflected by the outer surface side of the transreflective film forming a limit to brighten the transmissive display.

[0013] On the other hand, there is a demand for a transreflective liquid crystal display that brightens even in a transmissive mode, while maintaining the brightness in the reflective mode. However, it is difficult in principle to obtain brightness of both the reflective display and the transmissive display with only a transreflective film configuration. In order to brighten the transmissive display while ensuring the brightness of the reflective display to some degree, it is necessary to increase the brightness of the backlight light source. However, to increase the brightness of the light source, the power consumption of the whole liquid crystal display is increased, and in particular, when the liquid crystal display is applied to portable electronic apparatus, etc., a problem occurs in that the battery life is shortened.

SUMMARY OF THE INVENTION

[0014] Accordingly, the present invention addresses the above problems, and an object of the present invention is to provide a transreflective color liquid crystal display that enables a bright transmissive display and reduces the power consumption, without sacrificing the brightness of the reflective display.

[0015] In order to achieve the above object, a liquid crystal display of the present invention is provided that includes a liquid crystal layer that is held between a pair of substrates. A reflective display unit and a transmissive display unit are formed in one pixel. A retardation layer is formed in the transmissive display unit.

[0016] In the present invention, the light reflected by a transreflective film to the backlight side is the same in the oscillating direction as that of the incident light, and is transmitted therethrough without being absorbed by a polarizer on the lower side of the liquid crystal display. This light is reflected again to the liquid crystal cell side by a reflector of the backlight, and re-used. As a result, the brightness of the transmissive display can be enhanced while maintaining the brightness of the reflective display compared with that of a conventional structure. Alternatively, the power consumption can be reduced, since the brightness of a light source can be reduced if the brightness of the transmissive display is on a certain level.

[0017] The retardation layer preferably has retardation of roughly $\frac{1}{4}$ wavelength. Generally, a $\frac{1}{4}$ wavelength film means that the retardation layer has a retardation of 140 nm. This retardation is $\frac{1}{4}$ the wavelength of green light, and the retardation is 100 nm for blue light (a wavelength of 400 nm), and 150 nm for red light (a wavelength of 600 nm), and further, 180 nm for longer wavelength light (a wavelength of 720 nm). Thus, the range provided by the $\frac{1}{4}$ wavelength film is not less than 100 nm to not more than 180 nm. Uniform retardation of the $\frac{1}{4}$ wavelength can be easily realized if the retardation layer is formed of a polymer liquid crystal.

[0018] An electronic apparatus in accordance with the present invention includes the liquid crystal display described above. In the present invention, an electronic apparatus is realized that has display units that are bright in both the reflective display and the transmissive display and low in power consumption.

BRIEF DESCRIPTION OF THE DRAWINGS

[0019] FIG. 1 is a cross-sectional view of a schematic configuration of a transreflective liquid crystal display of an embodiment of the present invention;

[0020] FIG. 2 is a schematic that shows the configuration from a backlight to a transreflective film of the liquid crystal display, and explains the operation of the liquid crystal display;

[0021] FIG. 3 is an enlarged schematic of a pixel unit showing an example of the application of the invention to an active matrix liquid crystal display;

[0022] FIG. 4 is an enlarged schematic of a pixel unit showing an example of the application of the invention to a passive matrix liquid crystal display;

[0023] FIGS. 5(a)-5(c) are perspective views of examples of electronic apparatus provided with the liquid crystal display;

[0024] FIG. 6 is a cross-sectional view of a schematic configuration of a conventional transreflective color liquid crystal display;

[0025] FIG. 7 is a schematic that shows the configuration from a backlight to a transreflective film of the conventional liquid crystal display.

DETAILED DESCRIPTION OF PREFERRED EMBODIMENTS

[0026] An embodiment of the present invention will be described with reference to the drawings.

[0027] FIG. 1 is a cross-sectional view showing the schematic representation of a liquid crystal display of the present embodiment, and in particular, showing an example of a transreflective color liquid crystal display. FIG. 1 schematically shows a cross-sectional structure of the liquid crystal display, and the scale, such as the thickness of each member, is different for each member.

[0028] In the liquid crystal display of the present embodiment, a liquid crystal cell is formed by disposing two glass substrates 104, 111 having transparent electrodes 105, 109 on each inner surface side facing each other, as shown in FIG. 1, and holding a liquid crystal layer 107 between the glass substrates 104, 111. A transreflective film including a reflector 110 and an aperture having a retardation layer 116, a transparent electrode 109, and an alignment layer 108 are successively disposed on the inner surface side of the lower glass substrate 111. Two retardation films 102, 103, and a polarizer 101 are successively disposed on the outer surface side of the upper glass substrate 104. A color filter or the like is omitted in FIG. 1. A transreflective film is formed of a metal film provided with a window-like or slit-like aperture and formed of aluminum, silver or an alloy thereof. The retardation layer 116 is provided in the window-like or slit-like aperture. The above configuration (the configuration related to the reflective display) is similar to that of a conventional liquid crystal display.

[0029] A polarizer 112 is disposed on an outer surface of the lower glass substrate 111, and a backlight (an illuminating device) is disposed outside thereof. The backlight has a light source 115 including a cold cathode ray tube, a light-emitting diode, etc., a light guide plate 113 and a

reflector **114**, and a reflective polarizer (omitted in **FIG. 1**) may be disposed between the light guide plate **113** and the polarizer **112**. A regular polarizer has the function of allowing one of the plane-polarized waves in two directions orthogonal to each other to be transmitted therethrough and absorbing the other, while the reflective polarizer has the function of allowing one of the plane-polarized waves to be transmitted and reflecting the other. For example, the reflective polarizer disclosed in Japanese Unexamined Patent Application Publication No. 9-506985 (Brand Name DBEF, manufactured by Sumitomo 3M Ltd.), and the reflective polarizer including a cholesteric liquid crystal film and a $\frac{1}{4}$ wavelength film disclosed in Japanese Unexamined Patent Application Publication No. 10-319235 (Brand Name PCF, manufactured by Nitto Denko Corp.) can be used.

[0030] Some configurations of the pixel units in the liquid crystal display in accordance with the present invention are described below. **FIG. 3** is an enlarged schematic of the pixel unit with the present invention applied to an active matrix liquid crystal display using a Thin Film Transistor (TFT) element **303**. The TFT element **303** is formed corresponding to each pixel at intersections including a plurality of gate wires **304** and signal wires **305** in every direction. A reflector **301** and an opening part **306** are formed in one pixel, and a retardation layer **302** including a polymer liquid crystal layer is formed in the opening part **306**. The retardation layer **302** has a retardation of roughly 140 nm. Alignment layers and transparent electrodes are omitted in the **FIG. 3**. **FIG. 4** is an enlarged schematic of the pixel unit with the present invention applied to a passive matrix liquid crystal display. A reflector **401** and an opening part **403** are formed in one pixel, and a retardation layer **404** including a polymer liquid crystal layer is formed in the opening part **403**. The retardation layer **404** has a retardation of roughly 140 nm. An opposing electrode **402** is formed on a proximal side via the liquid crystal layer. Alignment layers, transparent electrodes, color filters, etc. are omitted in **FIG. 4**.

[0031] The operation of the liquid crystal display according to the present embodiment will be described below. However, prior to the description of this operation, the reason why the light reflected by the outer surface of the transfective film cannot be re-used in the conventional liquid crystal display shown in **FIG. 6** will be described with reference to **FIG. 7**. **FIG. 7** shows the configuration, including the backlight to the transfective film **611** among the components of the conventional liquid crystal display shown in **FIG. 6**, and each part is described separately in order to illustrate the polarized state of the light at each point in the optical path. The non-polarized light is emitted from the light source **617** of the backlight, and this light is reflected or scattered by the white reflector **616** on the outer surface of the light guide plate, or a white printing on the surface of the light guide plate, and successively transmitted through the light guide plate **615** and the polarizer **614**. If the axis of transmission of the polarizer **614** is perpendicular to the plane of **FIG. 7**, the light after being transmitted through the polarizer **614** becomes a plane-polarized light in the direction perpendicular to the plane of **FIG. 7**. Next, when this light is transmitted through the $\frac{1}{4}$ wavelength film **613**, the plane-polarized light in the direction perpendicular to the plane is converted into circularly polarized light, or elliptically polarized light with high ellipticity, due to the operation of the $\frac{1}{4}$ wavelength film **613**, and is transmitted through the glass substrate **612**. Thus, a part of the light **L1**

being transmitted through the transfective film **611** (having the reflective unit **611a** and the transmissive unit **611b**) is incident on the liquid crystal layer side in a state of circularly polarized light, or elliptically polarized light with high ellipticity, as described with regard to the related art.

[0032] On the other hand, most of the light **L2** reflected by the outer surface of the transfective film **611** is transmitted through the glass substrate **612**, and then, is incident again in the $\frac{1}{4}$ wavelength film **613** in the state of the circularly polarized light, or the elliptically polarized light with high ellipticity, is transmitted through the $\frac{1}{4}$ wavelength film **613**, and is converted in the plane-polarized light in the direction parallel to the plane of **FIG. 7**. Next, this light is incident on the polarizer **614**. The axis of transmission of this polarizer **614** is in the direction perpendicular to the plane of **FIG. 7**, and thus, the axis of absorption thereof is in the direction parallel to the plane of **FIG. 7**. When the plane-polarized light in the direction parallel to the plane of **FIG. 7** is incident in the polarizer **614**, this light is absorbed by the polarizer **614**, and cannot be transmitted through the polarizer **614**. Therefore, the light **L2** reflected by the transfective film **611** is absorbed by the polarizer **614** in the middle thereof, and cannot reach the backlight, and thus, this light cannot be emitted toward the liquid crystal layer again for re-use.

[0033] On the other hand, the operation of the liquid crystal display according to the present embodiment will be explained with reference to **FIG. 2**. **FIG. 2** is a schematic that shows the configuration from the backlight to the transfective film (including a reflector **110** and an aperture having a retardation layer **116**) among the components of the liquid crystal display according to the present embodiment shown in **FIG. 1**. In **FIG. 2**, similar to **FIG. 7**, each member is described separately in order to illustrate the polarized state of the light at each point in the optical path. The non-polarized light is emitted from the light source **115** of the backlight, and incident in an end face of the light guide plate **113**. This light propagates inside the light guide plate while repeating a total reflection on the inner surface and the outer surface of the light guide plate **113**; however, the light is reflected or scattered by the white reflector **114** on the outer surface of the light guide plate **113** and the white printing on the surface of the light guide plate, and is successively transmitted through the polarizer **112** and the glass substrate **111** in a plane-polarized state. Next, when this light is transmitted through the retardation layer **116** formed in the aperture, it is converted into circularly polarized light, or elliptically polarized light **L1** with high ellipticity, and incident in the liquid crystal layer side in the state of circularly polarized light, or elliptically polarized light with high ellipticity.

[0034] Meanwhile, most of the light **L2** reflected by the outer surface of the reflector **110** of the transfective film is reflected in a plane-polarized state, and is transmitted through the polarizer **112** again in the same polarized state, and returns to the backlight. Since this light is reflected to the liquid crystal cell side by the reflector **114** of the backlight, the light reflected to the backlight side by the transfective film can be re-used.

[0035] As described above, most of the light **L2** reflected by the outer surface of the reflector **110** of the transfective film from a portion of light from the backlight can be

efficiently re-used in the liquid crystal display according to the present embodiment, the transreflective color liquid crystal display capable of brighter transmissive display can be realized while maintaining the brightness of the reflective display. If a similar brightness to that of a conventional color liquid crystal display is sufficient, the brightness of the light source **115** can be reduced, and power consumption can be reduced.

[0036] According to an experiment conducted by the inventors of the present invention, where the brightness of the individual backlight is set to be 100 cd/m², the brightness of the transmissive display of the conventional liquid crystal display shown in **FIG. 6** is 3.0 cd/m², while it is confirmed that the brightness of the transmissive display of the liquid crystal display according to the present embodiment shown in **FIG. 1** is 4.5 cd/m². In the experiment, the same components of the liquid crystal display of the present embodiment corresponding to those of the conventional liquid crystal display were used. According to the liquid crystal display of the present embodiment, the brightness in the transmissive display can be enhanced to, for example, about 1.5 times the conventional value.

[0037] Further, in the present embodiment, if a reflective polarizer with its axis of transmission aligned with that of the polarizer **112** is used between the light guide plate **113** of the backlight and the polarizer **112**, the light from the backlight can be introduced in the liquid crystal cell as plane-polarized light more efficiently than a case in which only a regular polarizer is used. Thus, the efficiency of utilization of the light from the light source can be further enhanced.

[0038] Examples of the electronic appliances having a liquid crystal display according to the above embodiment will be described below. **FIG. 5(a)** is a perspective view showing an example of a cellular phone. **FIG. 5(b)** is a perspective view showing an example of a wrist watch type of electronic apparatus. **FIG. 5(c)** is a perspective view showing an example of a portable information processing unit, such as a word processor and a personal computer.

[0039] The electronic apparatus shown in **FIGS. 5(a)** to **5(c)** are provided with a liquid crystal display unit using the liquid crystal display according to the present embodiment, and have a bright display screen for both the reflective display and the transmissive display, and electronic apparatus that are low in power consumption can be realized.

[0040] The technical scope of the present invention is not limited to the above embodiments, and various kinds of

modifications can be made to the structures discussed above while not deviating from the intent and object of the present invention. For example, the configuration related to the reflective display on the upper side of the transreflective film in **FIG. 1** is not limited to that in **FIG. 1**, and may be appropriately modified.

[0041] As described above, most of the light emitted from an illuminating device and reflected on the outer surface side of the transreflective film can be re-used efficiently. Thus, the transreflective color liquid crystal display capable of being a brighter transmissive display can be realized, while maintaining the brightness of the reflective display. Further, so long as the brightness of the transmissive display to some degree is ensured, the brightness of the light source can be reduced, and the power consumption can be reduced.

What is claimed is:

1. A liquid crystal display, comprising:

a pair of substrates;

a liquid crystal layer disposed between the pair of substrates;

a reflective display unit;

a transmissive display unit, the reflective display unit and the transmissive display unit being formed in one pixel; and

a retardation layer formed in said transmissive display unit.

2. The liquid crystal display according to claim 1, said retardation layer having a retardation of roughly ¼ wavelength.

3. The liquid crystal display according to claim 1, the retardation of said retardation layer being roughly in a range between 100 nm and 180 nm.

4. The liquid crystal display according to claim 1, said retardation layer including a polymer liquid crystal.

5. An electronic apparatus, comprising:

a display unit;

the liquid crystal display according to claim 1 provided in the display unit.

6. The liquid crystal display according to claim 2, the retardation layer including a polymer liquid crystal.

7. The liquid crystal display according to claim 3, the retardation layer including a polymer liquid crystal.

* * * * *

专利名称(译)	液晶显示器和包含液晶显示器的电子设备		
公开(公告)号	US20020054260A1	公开(公告)日	2002-05-09
申请号	US09/948428	申请日	2001-09-12
[标]申请(专利权)人(译)	精工爱普生株式会社		
申请(专利权)人(译)	SEIKO EPSON CORPORATION		
[标]发明人	MAEDA TSUYOSHI OKUMURA OSAMU		
发明人	MAEDA, TSUYOSHI OKUMURA, OSAMU		
IPC分类号	G02F1/1335 G02F1/13363		
CPC分类号	G02F1/133536 G02F1/133555 G02F1/13363 G02F2413/09 G02F2001/133637 G02F2001/133638 G02F2413/03 G02F2001/133565		
优先权	2000339396 2000-11-07 JP		
其他公开文献	US6831721		
外部链接	Espacenet USPTO		

摘要(译)

本发明提供一种透反式彩色液晶显示器，其提供透光显示器并降低功耗而不降低反射式显示器的亮度。在具有设置在一对基板之间的液晶层的液晶显示器中，在一个像素中形成反射显示单元和透射显示单元，并且包括聚合物液晶并且具有大约1/4波长的延迟的延迟层是形成在透射显示单元中。

