



(19) **United States**

(12) **Patent Application Publication** (10) **Pub. No.: US 2004/0246395 A1**

Chang (43) **Pub. Date: Dec. 9, 2004**

(54) **LASER REPAIR STRUCTURE OF LIQUID CRYSTAL DISPLAY DEVICE AND METHOD THEREOF**

(52) **U.S. Cl. 349/55**

(75) **Inventor: Shu-Hsiang Chang, Taipei City (TW)**

(57) **ABSTRACT**

Correspondence Address:
LOWE HAUPTMAN GOPSTEIN GILMAN & BERNER, LLP
Suite 310
1700 Diagonal Road
Alexandria, VA 22314 (US)

A laser repair structure of a LCD device obtained by extending dummy metal patterns of the LCD device is used to solve an abnormal color display. The structure includes a first electrical repair layer extending from a dummy metal to a first laser repair location; a second electrical repair layer extending from the dummy metal to a second laser repair location; a third electrical repair layer extending from a first source/drain electrode to the first laser repair location, a first dielectric layer provided between the third electrical repair layer and the first electrical repair layer; and a fourth electrical repair layer extending from a second source/drain electrode to the second laser repair location, the dielectric layer being also provided between the fourth electrical repair layer and the second electrical repair layer. The electrical repair layer is connected electrically with the third electrical repair layer after a first laser beam is irradiated to the first laser repair location, and the second electrical repair layer is connected electrically with the fourth electrical repair layer after a second laser beam is irradiated to the second laser repair location.

(73) **Assignee: TOPPOLY OPTOELECTRONICS CORP.**

(21) **Appl. No.: 10/861,356**

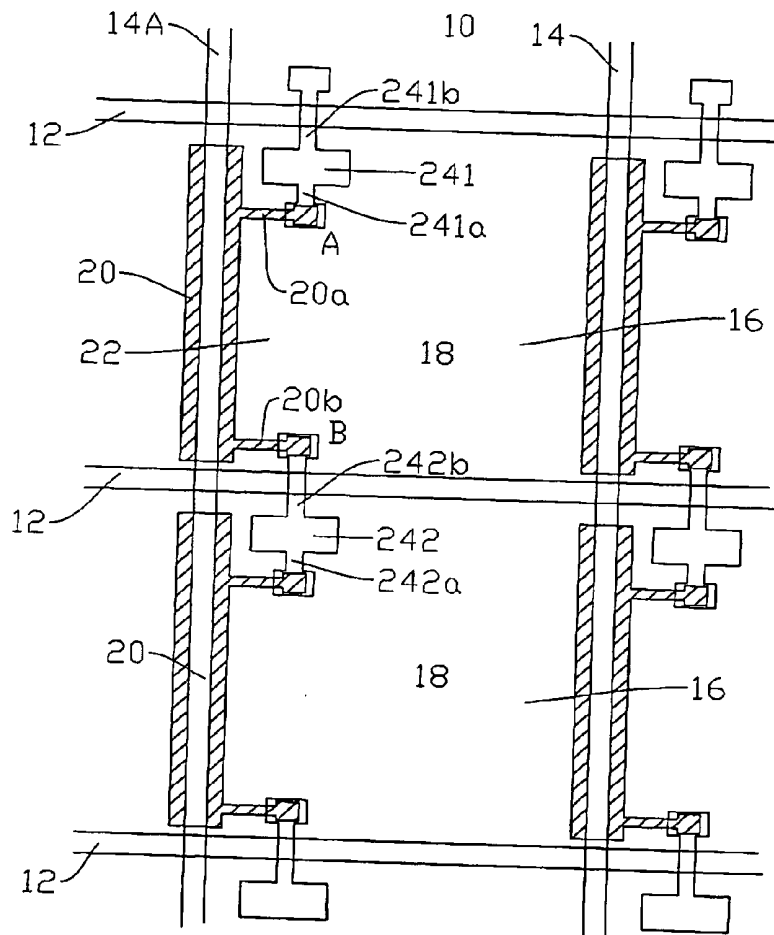
(22) **Filed: Jun. 7, 2004**

(30) **Foreign Application Priority Data**

Jun. 6, 2003 (TW)..... 92115338

Publication Classification

(51) **Int. Cl.⁷ G02F 1/1333**



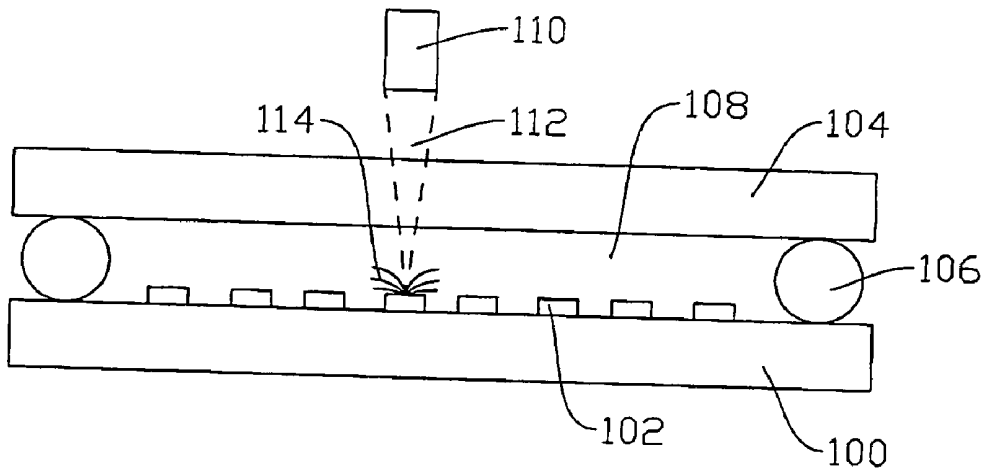


FIG.1 (PRIOR ART)

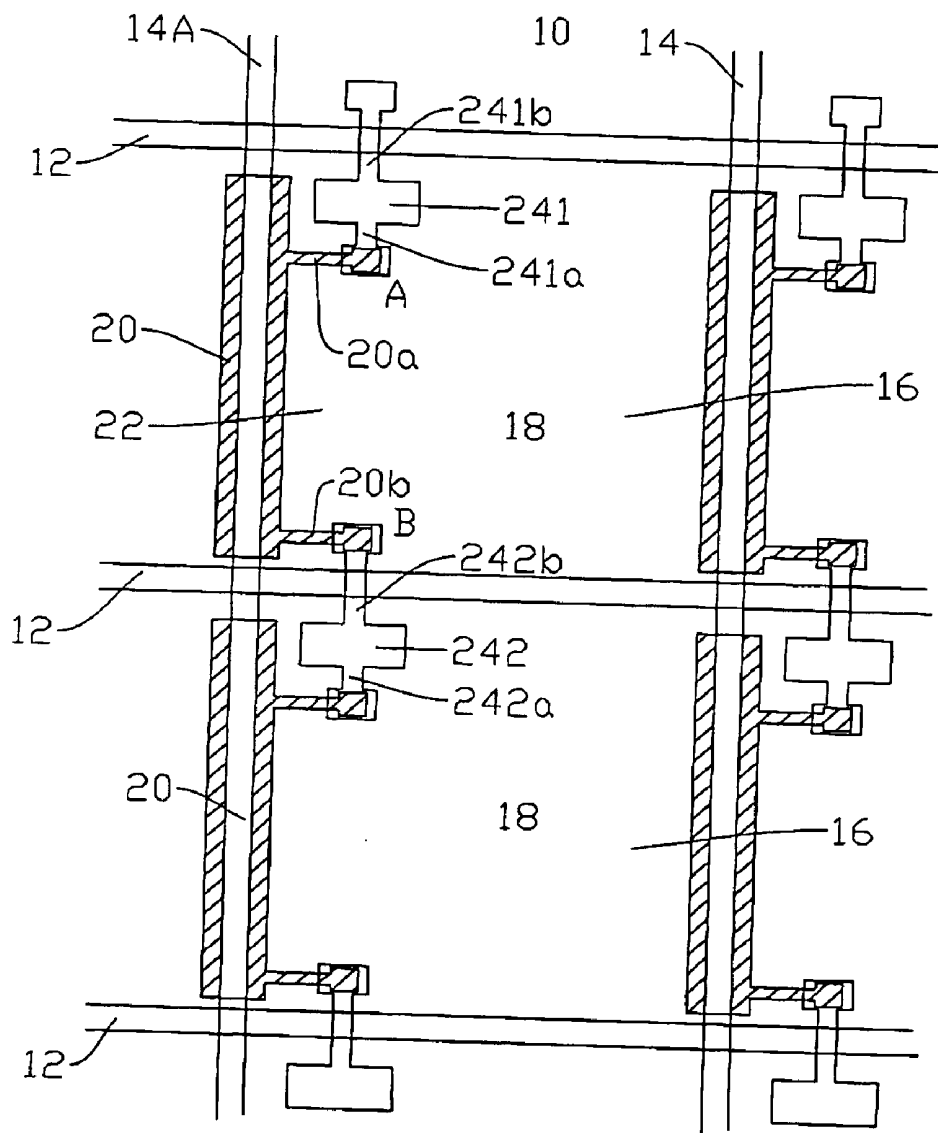


FIG.2A

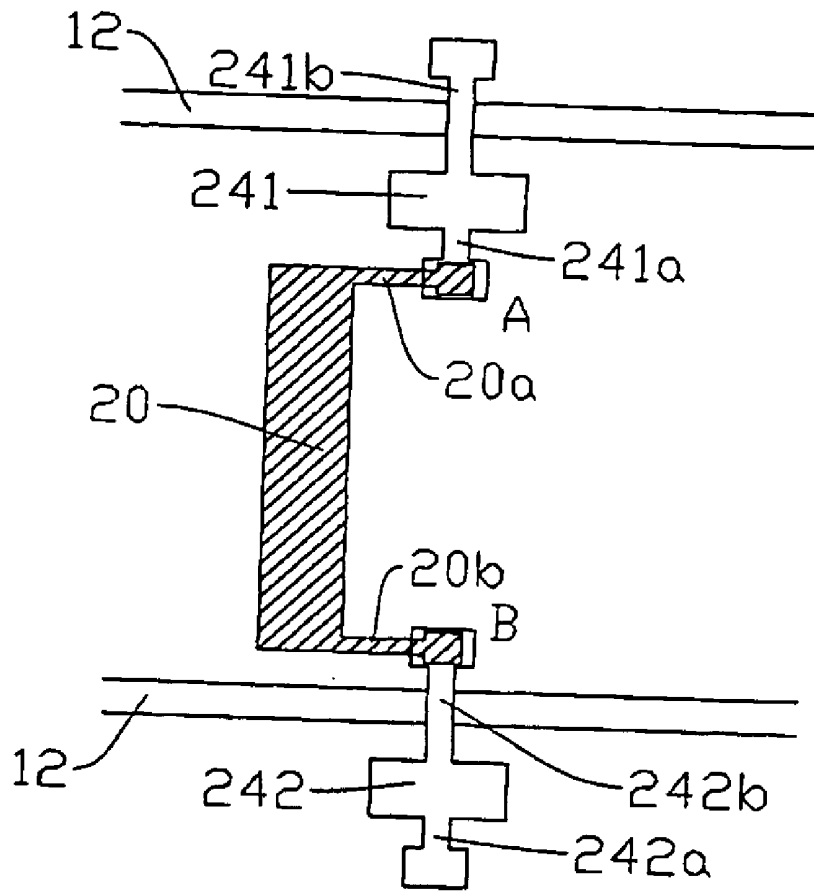


FIG.2B

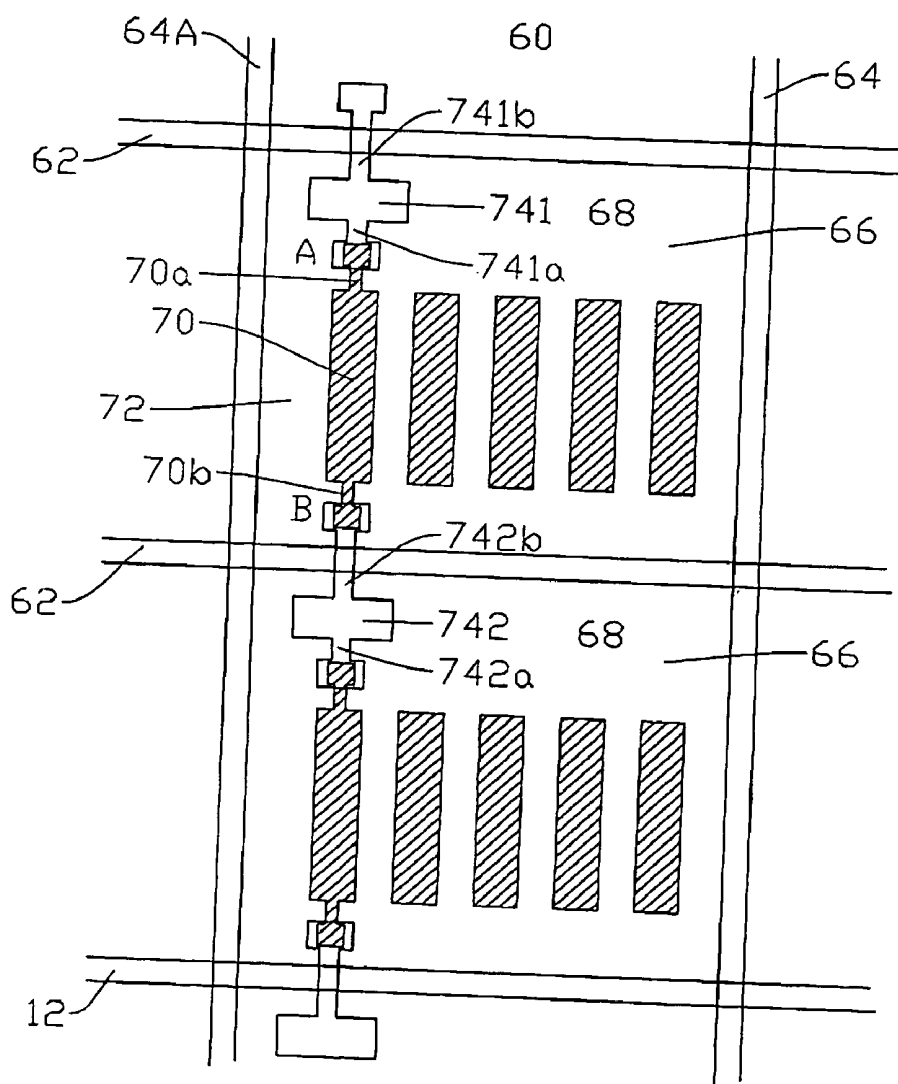


FIG.3A

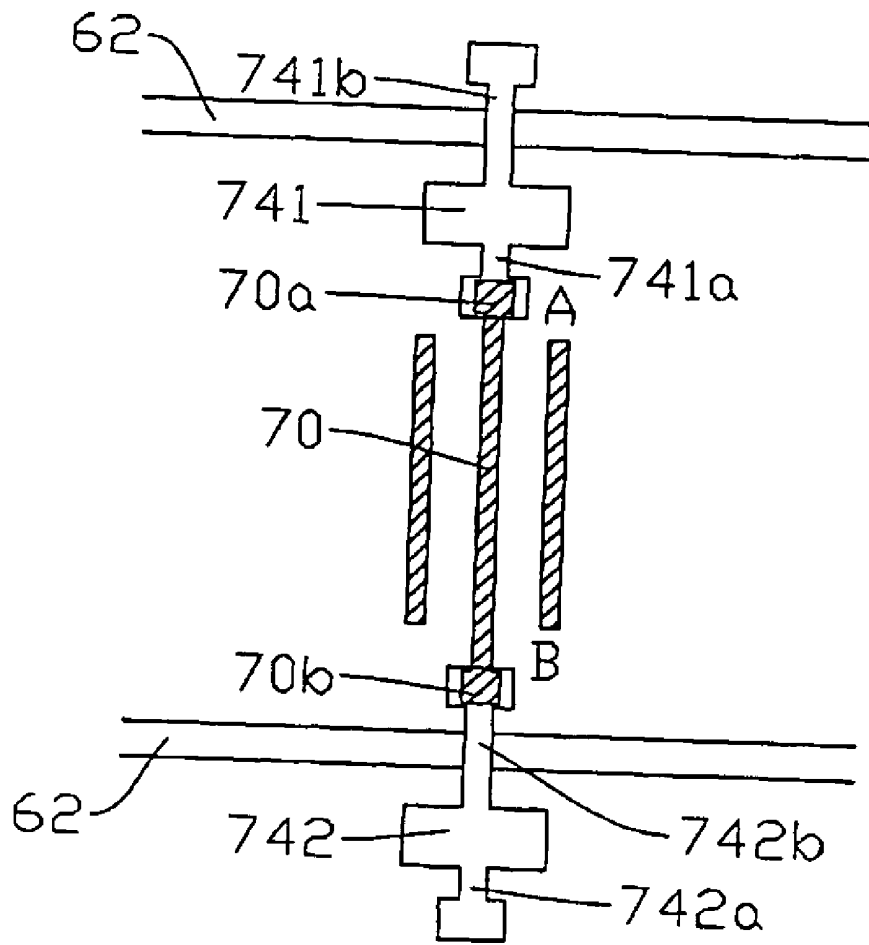


FIG.3B

LASER REPAIR STRUCTURE OF LIQUID CRYSTAL DISPLAY DEVICE AND METHOD THEREOF

BACKGROUND OF THE INVENTION

[0001] 1. Field of the Invention

[0002] The invention relates to a laser repair structure of liquid crystal display (LCD) device and method thereof, more particularly to a laser repair structure of LCD device and method thereof by extending the original dummy metal patterns of the LCD device.

[0003] 2. Description of the Prior Art

[0004] Display devices have become a common device in daily life. Televisions or computers all have incorporated display devices for displaying images to the user. The conventional cathode-ray tube (CRT) takes up a lot of space. In certain applications, such as notebook computers, CRT simply cannot be used. Hence, a dot matrix flat display product, such as TFT LCD (thin film transistor liquid crystal display), has been successfully promoted.

[0005] The TFT LCD is not a self-illuminating display. Liquid crystal is a substance that has the characteristics of both solid and liquid, whereby the arrangement of liquid crystal will be changed subject to the impetus of external electric field. The TFT, corresponding to one pixel, can apply the controlled electric field to liquid crystal for the purpose of switching orientation of liquid crystal.

[0006] However, some unexpected particles will be deposited in the TFT under the manufacturing procedures, especially for the fabrication of the TFT. Such particles may result in abnormal short or open circuits, and the pixel corresponding to such defective TFT cannot be switched ON/OFF normally. This phenomenon is considered a defect.

[0007] When the defect occurs and only little defective pixels are found, a laser repair method will be executed generally. A cross-sectional view of a partial structure of a TFT LCD and the traditional laser repair method are illustrated in **FIG.1**. The TFT LCD has a transparent substrate **100**, which is a glass substrate generally. There are some TFTs formed on the transparent substrate **100**, and each TFT **102** has a corresponding address. Sealant **106** is put around the edges of the transparent substrate **100** and an opening is left before an injection of liquid crystal. A second substrate with a color filter **104** is attached to the sealant **106**, and the liquid crystal layer **108** is injected into the space formed by the second substrate **104**, the transparent substrate **100** and the sealant **106** through the opening. At last, the opening is sealed by the sealant again, and then the semi-finished TFT display device is produced accordingly.

[0008] Before executing the next procedure, the switching between bright and dark of each pixel will be checked first. When an abnormal short/open circuit occurred at a defective TFT, the laser repair method will be used. Conventionally, a laser source **110** produces a high-energy laser beam **112**, focusing on the defective TFT, so as to cut a metal line of the TFT or destroy the TFT.

[0009] Since the mechanism of the above laser repair method is to destroy the TFT, the defective pixel corresponding such TFT will become the permanent dark dot. In other words, such pixel cannot display its color (red, blue

and green) under the normal condition, and the color of such dot including the defective pixel is obviously abnormal in comparison to other normal display dots. The user will be aware of its presence easily.

SUMMARY OF THE INVENTION

[0010] In light of the state of the art described above, it is an object of the present invention to provide a laser repair structure of a liquid crystal display (LCD) device and method thereof that can reduce the problems of the conventional laser repair method for LCD device described above.

[0011] It is another object of this invention to provide a laser repair structure of a liquid crystal display (LCD) device and method thereof for fixing one defect, which only uses the laser beams twice by extending the patterns of the original dummy metal.

[0012] A further object of this invention is to provide a laser repair structure of liquid crystal display (LCD) device and method thereof so as to increase the yield and reduce the energy of the laser beam by using a thinner irradiated dielectric layer.

[0013] In view of the above and other objects which will become apparent as the description proceeds, there is provided according to a general aspect of the present invention a laser repair method for manufacturing a liquid crystal display device, which comprises a first electrical repair layer extending from a dummy metal to a first laser repair location; a second electrical repair layer extending from the dummy metal to a second laser repair location; a third electrical repair layer extending from a first source/drain electrode to the first laser repair location; a fourth electrical repair layer extending from a second source/drain electrode to the second laser repair location; and a dielectric layer provided between the third electrical repair layer and the first electrical repair layer, and being also provided between the fourth electrical repair layer and the second electrical repair layer. The method is described below. A first laser beam is irradiated to the first laser repair location for connecting electrically the first electrical repair layer and the third electrical repair layer, and a second laser beam is irradiated to the second laser repair location for connecting electrically the second electrical repair layer and the fourth electrical repair layer.

[0014] Based on the idea described above, the dummy metal is located on a substrate of a transmissive LCD such that it can prevent from light leakage between two adjacent pixel areas.

[0015] Based on the aforementioned idea, the dummy metal is located on a substrate of a reflective LCD such that it can planarize said dielectric layer.

[0016] Based on the idea described above, the material of the dummy metal is selected one from the group consisting of Al, Cu and both.

[0017] Based on the idea described above, the thickness of the dielectric layer is about 0.6 micron.

[0018] Based on the idea described above, the fourth electrical repair layer leaps across a scan line.

[0019] Based on the aforementioned idea, the width of the fourth electrical repair layer above the scan line is smaller than that of the other parts of the fourth electrical repair layer.

[0020] Based on the idea described above, the material of the first and second electrical repair layers of the dummy metal is selected one from the group consisting of Al, Cu and both.

[0021] Based on the aforementioned idea, the material of the third electrical repair layer and the fourth electrical repair layer is selected one from the group consisting of Al, Cu and both.

[0022] Based on the idea described above, the material of the third electrical repair layer and the fourth electrical repair layer is polysilicon.

[0023] In view of the above and other objects which will become apparent as the description proceeds, there is provided according to a general aspect of the present invention a laser repair structure for liquid crystal display device. The laser repair structure comprises a first electrical repair layer extending from a dummy metal to a first laser repair location; a second electrical repair layer extending from the dummy metal to a second laser repair location; a third electrical repair layer extending from a first source/drain electrode to the first laser repair location; a fourth electrical repair layer extending from a second source/drain electrode to the second laser repair location; and a dielectric layer provided between the third electrical repair layer and the first electrical repair layer; and being also provided between the fourth electrical repair layer and the second electrical repair layer.

[0024] Based on the idea described above, the dummy metal is located on a substrate of a transmissive LCD such that it prevents from light leakage between two adjacent pixel areas.

[0025] Based on the aforementioned idea, the dummy metal is located on a substrate of a reflective LCD such that it planarizes the dielectric layer.

[0026] Based on the idea described above, the material of the dummy metal is selected one from the group consisting of Al, Cu and both.

[0027] Based on the idea described above, the thickness of the dielectric layer is about 0.6 micron.

[0028] Based on the idea described above, the fourth electrical repair layer leaps across a scan line.

[0029] Based on the aforementioned idea, the width of the fourth electrical repair layer above the scan line is smaller than that of the other parts of the fourth electrical repair layer.

[0030] Based on the idea described above, the material of the first and second electrical repair layers of the dummy metal is selected one from the group consisting of Al, Cu and both.

[0031] Based on the aforementioned idea, the material of the third electrical repair layer and the fourth electrical repair layer is selected from the group consisting of Al, Cu and both.

[0032] Based on the idea described above, the material of the third electrical repair layer and the fourth electrical repair layer is polysilicon.

[0033] Based on the aforementioned idea, the polysilicon is a doped polysilicon for increasing the conductivity.

BRIEF DESCRIPTION OF THE DRAWINGS

[0034] The foregoing aspects and many of the attendant advantages of this invention will become more readily appreciated as the same becomes better understood by reference to the following detailed description, when taken in conjunction with the accompanying drawings, wherein:

[0035] **FIG. 1** schematically illustrates a view of conventional laser repair process for darkening a pixel of a liquid crystal display (LCD) device;

[0036] **FIGS. 2A and 2B** schematically illustrate the top view and the partially enlarging view of a laser repair structure for a transmissive liquid crystal display (LCD) device according to a first embodiment of the present invention; and

[0037] **FIGS. 3A and 3B** schematically illustrate the top view and the partially enlarging view of a laser repair structure for a reflective liquid crystal display (LCD) device according to a second embodiment of the present invention.

DESCRIPTION OF THE PREFERRED EMBODIMENT

[0038] Some preferred embodiments of the present invention will now be described in greater detail. Nevertheless, it should be recognized that the present invention can be practiced in a wide range of other embodiments besides those explicitly described, and the scope of the present invention is expressly not limited except as specified in the accompanying claims.

[0039] Please refer to **FIG. 2A** and **FIG. 2B**, the top view and the partially enlarging view of a laser repair structure for a transmissive LCD device according to a first embodiment of the present invention are shown. A plurality of horizontal scan lines **12**, a plurality of vertical data lines **14**, and a plurality of pixel areas **16** are formed on a substrate **10** of the transmissive LCD. Each pixel area **16** is defined by two scan lines **12** and two data lines **14**. A pixel electrode **18** is put on the surface of the pixel area **16** and a TFT is formed in the pixel area **16** separately. Besides, there is a pattern that floating dummy metal **20** is located between every two pixel areas and below the data lines **14** (the second metal layer) for preventing from light leakage between two pixel areas **16**. The dummy metal **20** and the scan lines **12** (the first metal layer) are formed at the same time.

[0040] According to the first embodiment of the present invention, there are two extended electrical repair layers **20a-20b** attached to the floating dummy metal **20** (the first metal layer), two extended electrical repair layers **241a-241b** and two extended electrical repair layers **242a-242b** attached to source/drain electrodes **241-242** (the second metal layer) of TFTs respectively. A dielectric layer is put between the extended electrical repair layers **20a** (the first metal layer) and the extended electrical repair layers **241a** (the second metal layer) at the location A, and it is put between the extended electrical repair layers **20b** (the first metal layer) and the extended electrical repair layers **242b** (the first metal layer) at the location B, too. Once a defect **22** is found, the laser beams can be used to irradiate the locations A-B in order to connect electrically the source/drain electrode **241** of the TFT and the source/drain electrode **242** of the TFT. Then, the signal of the source/drain electrode **242** of the TFT can be transferred from the

extended electric repair layer **242b**, through the extended electric repair layer **20b**, the dummy metal **20**, the extended electric repair layer **20a**, and the extended electric repair layer **241** a to the source/drain electrode **241** of the TFT. The above pixel electrode **18** can be controlled synchronously by the source/drain electrode **242** of the TFT so as to fix the defect **22**.

[0041] Please refer to **FIG. 3A** and **FIG. 3B**, the top view and the partially enlarging view of a laser repair structure for a reflective LCD device according to a second embodiment of the present invention are shown. A plurality of horizontal scan lines **62**, a plurality of vertical data lines **64**, and a plurality of pixel areas **66** are formed on the substrate **60** of the reflective LCD. Each pixel area **66** is defined by two scan lines **62** and two data lines **64**. A pixel electrode **68** is put on the surface of the pixel area **66** and the TFT is formed in the pixel area **66** separately. Besides, there are a floating dummy metal **70** put in the pixel area **66** for planarizing the dielectric layer (not shown in the FIGs.). The dummy metal **70** and the scan lines **62** (the first metal layer) are formed at the same time.

[0042] According to the second embodiment of the present invention, there are two extended electrical repair layers **70a-70b** attached to at least one of the floating dummy metal **70** (the first metal layer), two extended electrical repair layers **741a-741b** and two extended electrical repair layers **742a-742b** attached to the source/drain electrodes **741/742** (the second metal layer) of TFTs respectively. The above-mentioned dielectric layer is put between the extended electrical repair layers **70a** (the first metal layer) and the extended electrical repair layers **741a** (the second metal layer) at the location A, and it is put between the extended electrical repair layers **70b** (the first metal layer) and the extended electrical repair layers **742b** (the first metal layer) at the location B, too. Once a defect **72** is found, the laser beams can be used to irradiate the locations A-B in order to connect electrically the source/drain electrode **741** of the TFT and the source/drain electrode **742** of the TFT. Then, the signal of the source/drain electrode **742** of the TFT can be transferred from the extended electric repair layer **742b**, through the extended electric repair layer **70b**, the dummy metal **70**, the extended electric repair layer **70a**, and the extended electric repair layer **741a** to the source/drain electrode **741** of the TFT. The above pixel electrode **68** can be controlled synchronously by the source/drain electrode **742** of the TFT so as to fix the defect **72**.

[0043] The embodiments of this invention are easily executed because one defect can be fixed by using laser beams twice only. Furthermore, a repair yield can reach 90% by using laser welding technology for connecting electrically the first metal layer and the second metal layer, which is separated by the dielectric layer with about 0.6 μm . The repair yield can increase and the energy of the laser beam can be reduced when the thickness of the dielectric layer decreases. In addition, since the extended electric repair layer of the source/drain electrode of the TFT (the second metal layer) leaps across the scan line, the width of the extended electrical repair layer above the scan line is smaller than other parts of the extended electrical repair layer. It will get a lower stray capacitance that can avoid delaying the signals transferred in the metal layers. Such a delay can affect the display quality of LCD. In general, the metal layers and the source/drain electrodes of the TFT, including

their extended electrical repair layers, can use same conductive material, such as aluminum (Al), copper (Cu) or both. However, the other non-metal conductive material is also applicable. For example, a doped polycrystalline silicon for increasing conductivity, which usually forms the gate of TFT, or conductive ITO/IZO layer, can be used.

[0044] Although the specific embodiment has been illustrated and described, it will be obvious to those skilled in the art that various modifications may be made without departing from what is intended to be limited solely by the appended claims.

What is claimed is:

1. A laser repair method for manufacturing a liquid crystal display (LCD) device which comprises:

- a first electrical repair layer extending from a dummy metal to a first laser repair location;
- a second electrical repair layer extending from said dummy metal to a second laser repair location;
- a third electrical repair layer extending from a source/drain electrode to said first laser repair location;
- a fourth electrical repair layer extending from a second source/drain electrode to said second laser repair location; and
- a dielectric layer provided between said third electrical repair layer and said first electrical repair layer, and being also provided between said fourth electrical repair layer and said second electrical repair layer; the method comprising:

irradiating a first laser beam to said first laser repair location to connect electrically said first electrical repair layer and said third electrical repair layer; and

irradiating a second laser beam to said second laser repair location to connect electrically said second electrical repair layer and said fourth electrical repair layer.

2. The laser repair method according to claim 1, wherein said dummy metal is located on a substrate of a transmissive LCD such that it can prevent from light leakage between two adjacent pixel areas.

3. The laser repair method according to claim 1, wherein said dummy metal is located on a substrate of a reflective LCD such that it can planarize said dielectric layer.

4. The laser repair method according to claim 1, wherein the material of said dummy metal is one selected from the group consisting of Al, Cu and both.

5. The laser repair method according to claim 1, wherein the thickness of said dielectric layer is about 0.6 micron.

6. The laser repair method according to claim 1, wherein said fourth electrical repair layer leaps across a scan line.

7. The laser repair method according to claim 6, wherein the width of said fourth electrical repair layer above said scan line is smaller than that of the other parts of said fourth electrical repair layer.

8. The laser repair method according to claim 1, wherein the material of said first and said second electrical repair layers of said dummy metal is one selected from the group consisting of Al, Cu and both.

9. The laser repair method according to claim 1, wherein the material of said third electrical repair layer and said fourth electrical repair layer is one selected from the group consisting of Al, Cu and both.

10. The laser repair method according to claim 1, wherein the material of said third electrical repair layer and said fourth electrical repair layer is polysilicon.

11. A laser repair structure for a liquid crystal display (LCD) device, comprising:

a first electrical repair layer extending from a dummy metal to a first laser repair location;

a second electrical repair layer extending from said dummy metal to a second laser repair location;

a third electrical repair layer extending from a first source/drain electrode to said first laser repair location;

a fourth electrical repair layer extending from a second source/drain electrode to said second laser repair location; and

a dielectric layer provided between said third electrical repair layer and said first electrical repair layer, and being also provided between said fourth electrical repair layer and said second electrical repair layer.

12. The laser repair structure according to claim 11, wherein said dummy metal is located on a substrate of a transmissive LCD such that it prevents from light leakage between two adjacent pixel areas.

13. The laser repair structure according to claim 11, wherein said dummy metal is located on a substrate of a reflective LCD such that it planarizes said dielectric layer.

14. The laser repair structure according to claim 11, wherein the material of said dummy metal is one selected from the group consisting of Al, Cu and both.

15. The laser repair structure according to claim 11, wherein the thickness of said dielectric layer is about 0.6 micron.

16. The laser repair structure according to claim 11, wherein said fourth electrical repair layer leaps across a scan line.

17. The laser repair structure according to claim 16, wherein the width of said fourth electrical repair layer above said scan line is smaller than that of the other parts of said fourth electrical repair layer.

18. The laser repair structure according to claim 11, wherein the material of said first and second electrical repair layers of said dummy metal is one selected from the group consisting of Al, Cu and both.

19. The laser repair structure according to claim 11, wherein the material of said third electrical repair layer and that of said fourth electrical repair layer is one selected from the group consisting of Al, Cu and both.

20. The laser repair structure according to claim 11, wherein the material of said third electrical repair layer and said fourth electrical repair layer is polysilicon.

21. The laser repair structure according to claim 11, wherein said polysilicon is doped polysilicon for increasing conductivity.

* * * * *

专利名称(译)	液晶显示装置的激光修复结构及其方法		
公开(公告)号	US20040246395A1	公开(公告)日	2004-12-09
申请号	US10/861356	申请日	2004-06-07
[标]申请(专利权)人(译)	统宝光电股份有限公司		
申请(专利权)人(译)	统宝光电股份有限公司.		
当前申请(专利权)人(译)	群创光电		
[标]发明人	CHANG SHU HSIANG		
发明人	CHANG, SHU-HSIANG		
IPC分类号	G02F1/1362 G02F1/1333		
CPC分类号	G02F2001/136268 G02F1/136259		
优先权	092115338 2003-06-06 TW		
其他公开文献	US7053977		
外部链接	Espacenet USPTO		

摘要(译)

通过延伸LCD装置的虚设金属图案而获得的LCD装置的激光修复结构用于解决异常彩色显示。该结构包括从虚设金属延伸到第一激光修复位置的第一电修复层;第二电修复层,从虚设金属延伸到第二激光修复位置;第三电修复层,从第一源/漏电极延伸到第一激光修复位置,第一电介质层,设置在第三电修复层和第一电修复层之间;第四电修复层从第二源/漏电极延伸到第二激光修复位置,电介质层也设置在第四电修复层和第二电修复层之间。在第一激光束照射到第一激光修复位置之后,电修复层与第三电修复层电连接,并且在第二激光束照射到第二激光束之后,第二电修复层与第四电修复层电连接。第二个激光修复位置。

