

US007995177B2

(12) **United States Patent**
Shoraku et al.

(10) **Patent No.:** **US 7,995,177 B2**
(45) **Date of Patent:** **Aug. 9, 2011**

(54) **LIQUID CRYSTAL DISPLAY DEVICE**

(56) **References Cited**

(75) Inventors: **Akihiro Shoraku**, Suzuka (JP);
Toshihide Tsubata, Tsu (JP); **Koichi Miyachi**, Soraku-gun (JP); **Iichiro Inoue**, Tsu (JP); **Akihiro Yamamoto**, Yamatokoriyama (JP); **Yoshito Hashimoto**, Nabari (JP); **Masumi Kubo**, Ikoma (JP); **Akihito Jinda**, Kitakatsuragi-gun (JP)

U.S. PATENT DOCUMENTS
6,067,140 A 5/2000 Woo et al.
6,249,011 B1 6/2001 Matsumoto
6,335,776 B1 * 1/2002 Kim et al. 349/129
(Continued)

(73) Assignee: **Sharp Kabushiki Kaisha**, Osaka (JP)

FOREIGN PATENT DOCUMENTS
JP 08-160454 6/1996
(Continued)

(*) Notice: Subject to any disclaimer, the term of this patent is extended or adjusted under 35 U.S.C. 154(b) by 385 days.

OTHER PUBLICATIONS
International Search Report mailed Sep. 12, 2006.
(Continued)

(21) Appl. No.: **11/916,604**

Primary Examiner — James A Dudek
(74) *Attorney, Agent, or Firm* — Nixon & Vanderhye, P.C.

(22) PCT Filed: **Jun. 9, 2006**

(86) PCT No.: **PCT/JP2006/311640**

§ 371 (c)(1),
(2), (4) Date: **May 20, 2009**

(57) **ABSTRACT**

(87) PCT Pub. No.: **WO2006/132369**

PCT Pub. Date: **Dec. 14, 2006**

A liquid crystal display device includes: a vertical alignment liquid crystal layer; first and second substrates facing each other with the liquid crystal layer interposed; first and second electrodes arranged on the first and second substrates to face the liquid crystal layer; and at least one alignment film in contact with the liquid crystal layer. A pixel region includes a first liquid crystal domain in which liquid crystal molecules are tilted in a first direction around the center of a plane, and approximately at the middle of the thickness, of the liquid crystal layer responsive to a voltage applied. The first liquid crystal domain is close to at least a part of an edge of the first electrode. The part includes a first edge portion in which an azimuthal direction, perpendicular to the part and pointing toward the inside of the first electrode, defines an angle greater than 90 degrees to the first direction. The first or second substrate has an opaque member including a first opaque portion for selectively shielding at least a part of the first edge portion from incoming light.

(65) **Prior Publication Data**

US 2009/0284703 A1 Nov. 19, 2009

(30) **Foreign Application Priority Data**

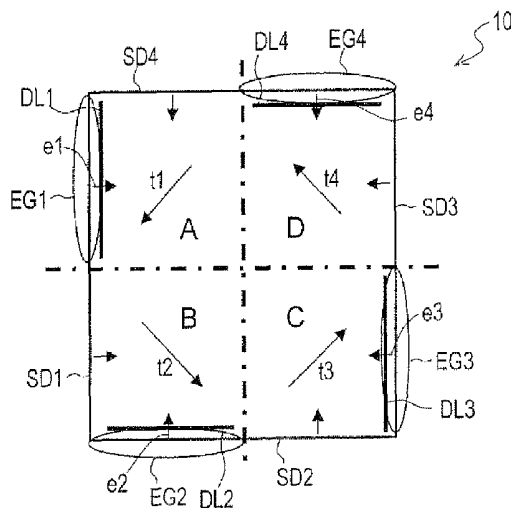
Jun. 9, 2005 (JP) 2005-169423
Jun. 7, 2006 (JP) 2006-158140

(51) **Int. Cl.**
G02F 1/1337 (2006.01)

(52) **U.S. Cl.** **349/130**

(58) **Field of Classification Search** 349/129-130
See application file for complete search history.

12 Claims, 28 Drawing Sheets



U.S. PATENT DOCUMENTS

6,369,870	B1 *	4/2002	Koma	349/130
6,411,346	B1	6/2002	Numano et al.	
6,512,564	B1	1/2003	Yoshida et al.	
6,867,836	B2 *	3/2005	Stalder et al.	349/129
6,919,942	B2	7/2005	Aoki et al.	
6,930,739	B2	8/2005	Takeda et al.	
6,958,791	B2	10/2005	Shimoshikiryo	
2003/0193625	A1	10/2003	Yoshida et al.	
2003/0227429	A1	12/2003	Shimoshikiryo	
2004/0001167	A1	1/2004	Takeuchi et al.	
2004/0222419	A1	11/2004	Matsui et al.	
2005/0052590	A1	3/2005	Ochiai et al.	
2005/0128397	A1	6/2005	Sasaki et al.	
2005/0200766	A1	9/2005	Chen	
2005/0237455	A1	10/2005	Fujioka et al.	
2005/0253797	A1	11/2005	Kamada et al.	
2006/0007194	A1	1/2006	Verschueren et al.	
2006/0028589	A1	2/2006	Um et al.	
2006/0038948	A1	2/2006	Nishikawa et al.	
2006/0050208	A1	3/2006	Enomoto et al.	
2006/0146243	A1	7/2006	Nakanishi et al.	
2008/0122772	A1	5/2008	Takeuchi et al.	
2009/0079923	A1	3/2009	Miyachi	
2009/0086141	A1	4/2009	Shoraku et al.	

2009/0225246	A1	9/2009	Shoraku et al.
2009/0244462	A1	10/2009	Tsubata
2009/0279034	A1	11/2009	Shoraku et al.

FOREIGN PATENT DOCUMENTS

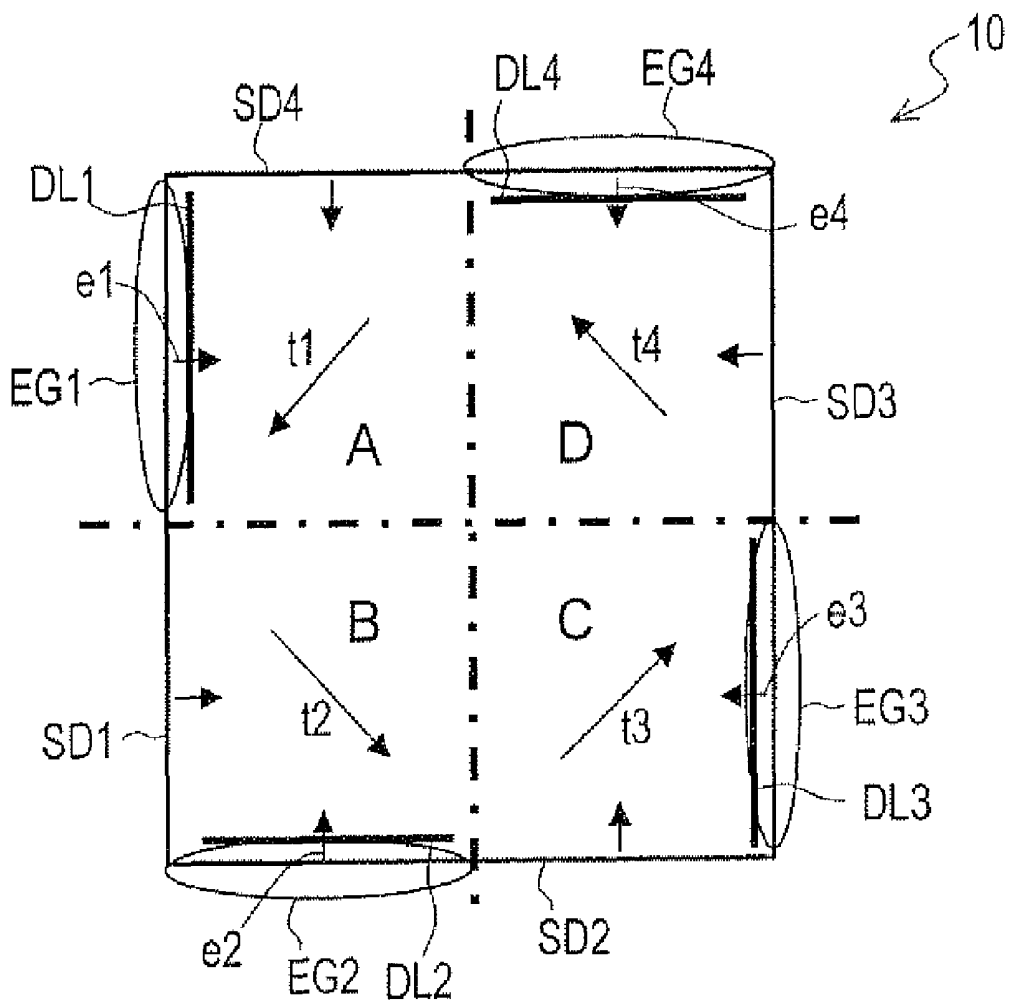
JP	08-179341	7/1996
JP	09-281497	10/1997
JP	10-161102	6/1998
JP	11-084421	3/1999
JP	11-352486	12/1999
JP	2003-107526	4/2003
JP	2004-062146	2/2004
JP	2005-024926	1/2005
WO	2006/121220	11/2006

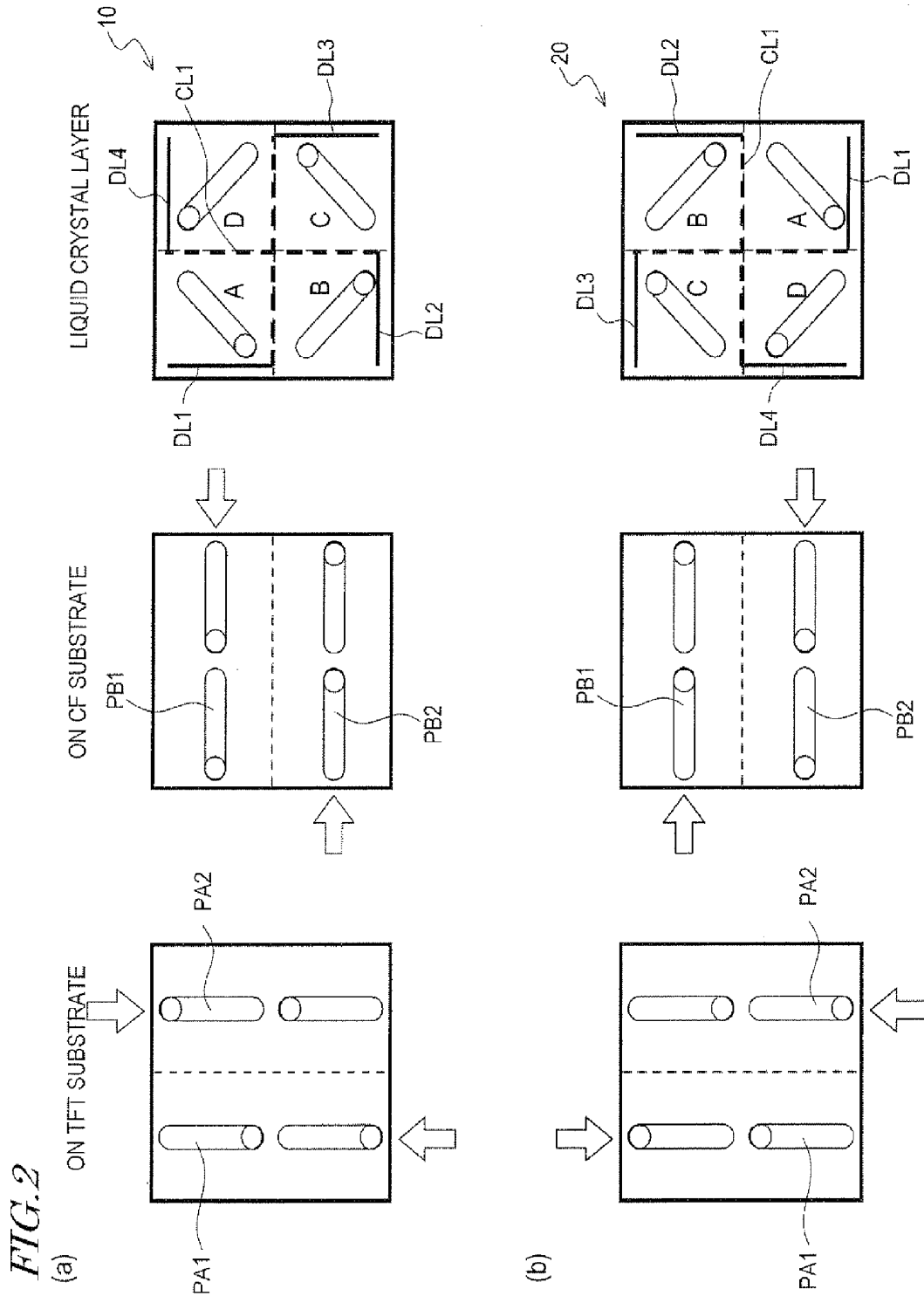
OTHER PUBLICATIONS

U.S. Office Action mailed Aug. 27, 2010 in co-pending U.S. Appl. No. 12/297,931.
 U.S. Office Action mailed Apr. 23, 2010 in corresponding U.S. Appl. No. 12/295,672.
 English translation of the International Preliminary Report on Patentability mailed Dec. 27, 2007 in corresponding PCT Application No. PCT/JP/2006/311640.

* cited by examiner

FIG. 1





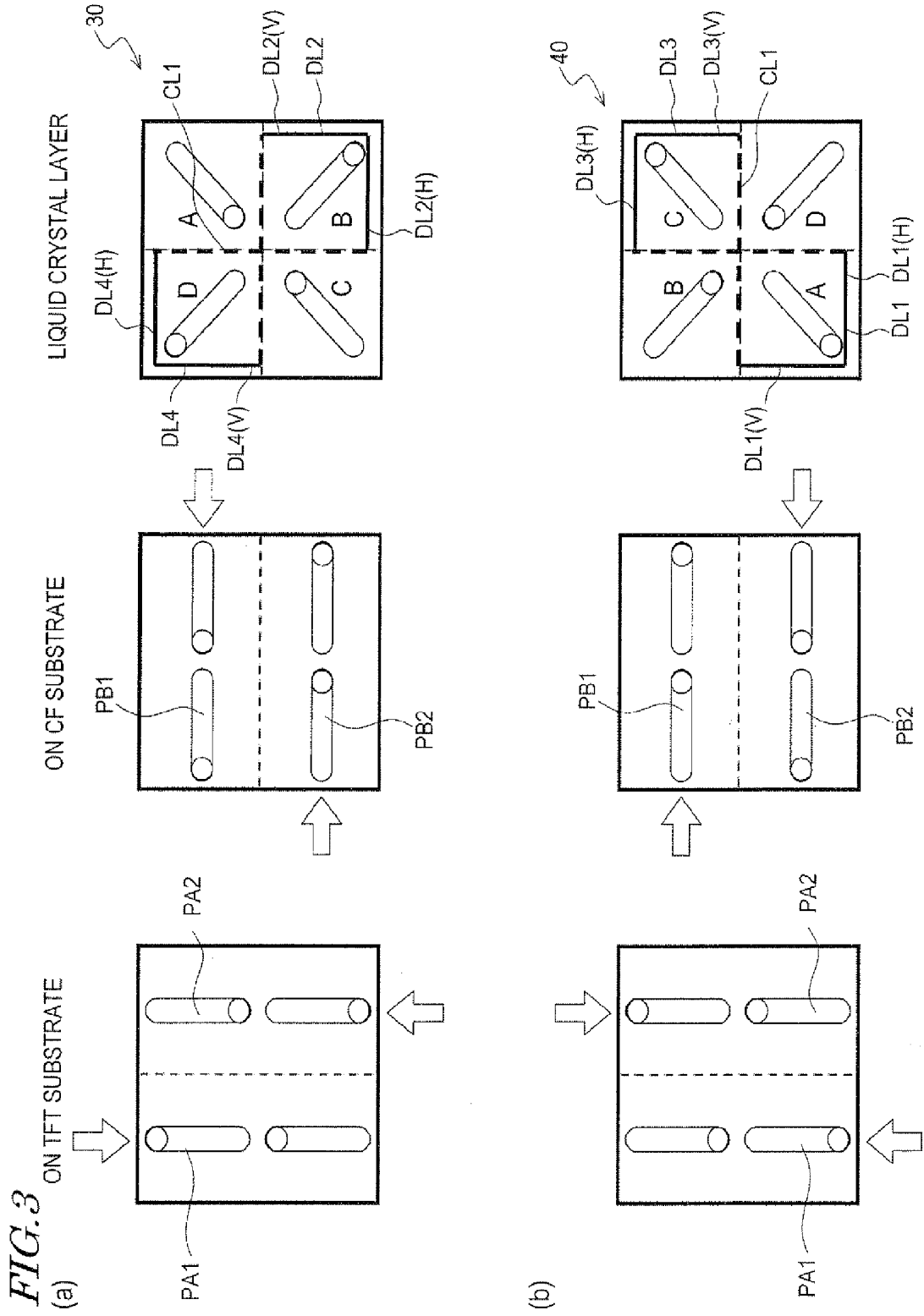
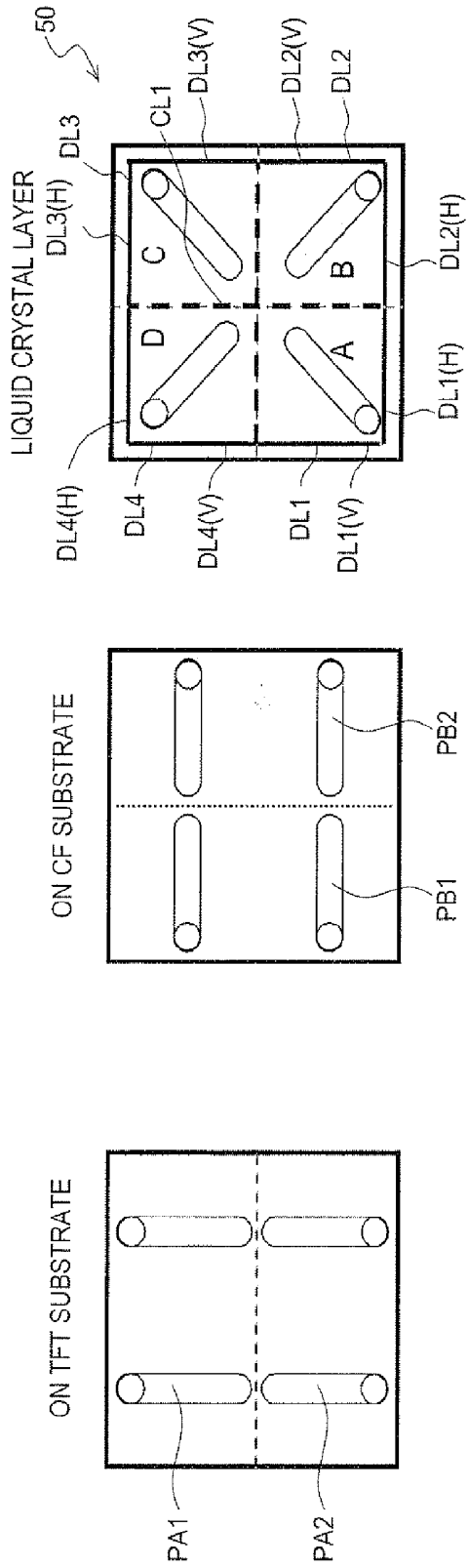


FIG. 4
(a)



(b)

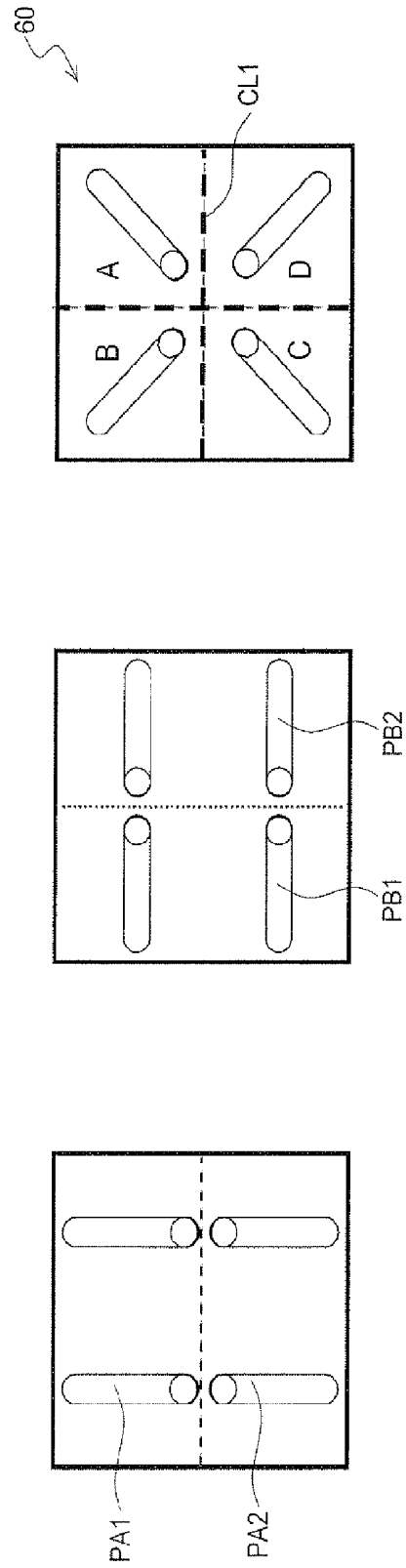


FIG. 5

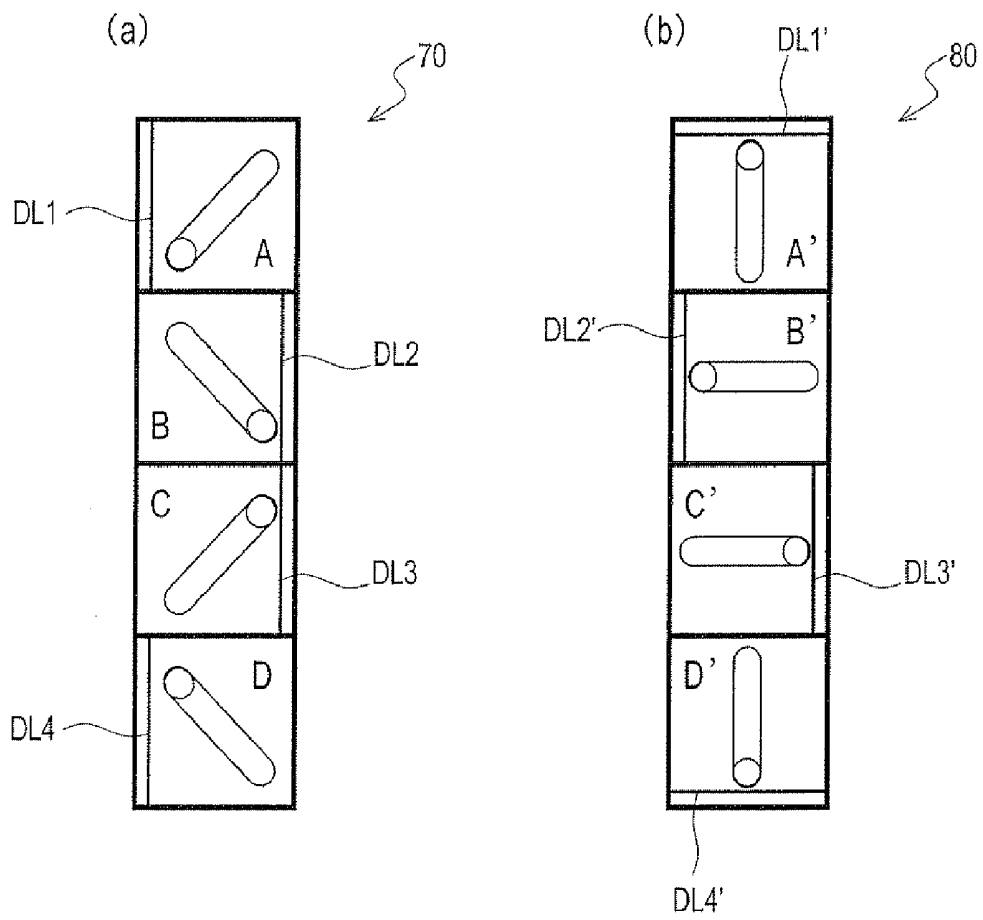


FIG. 6

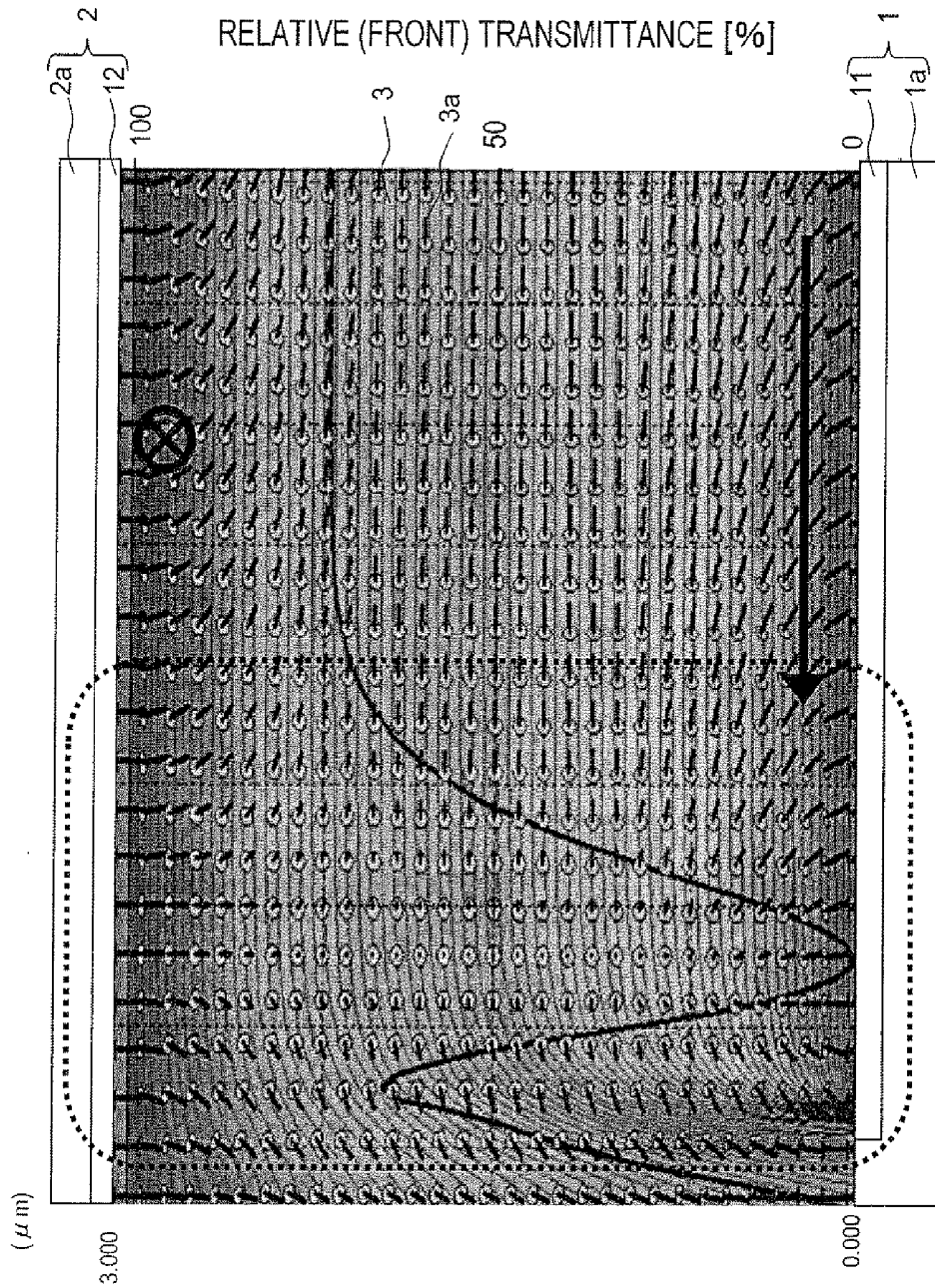
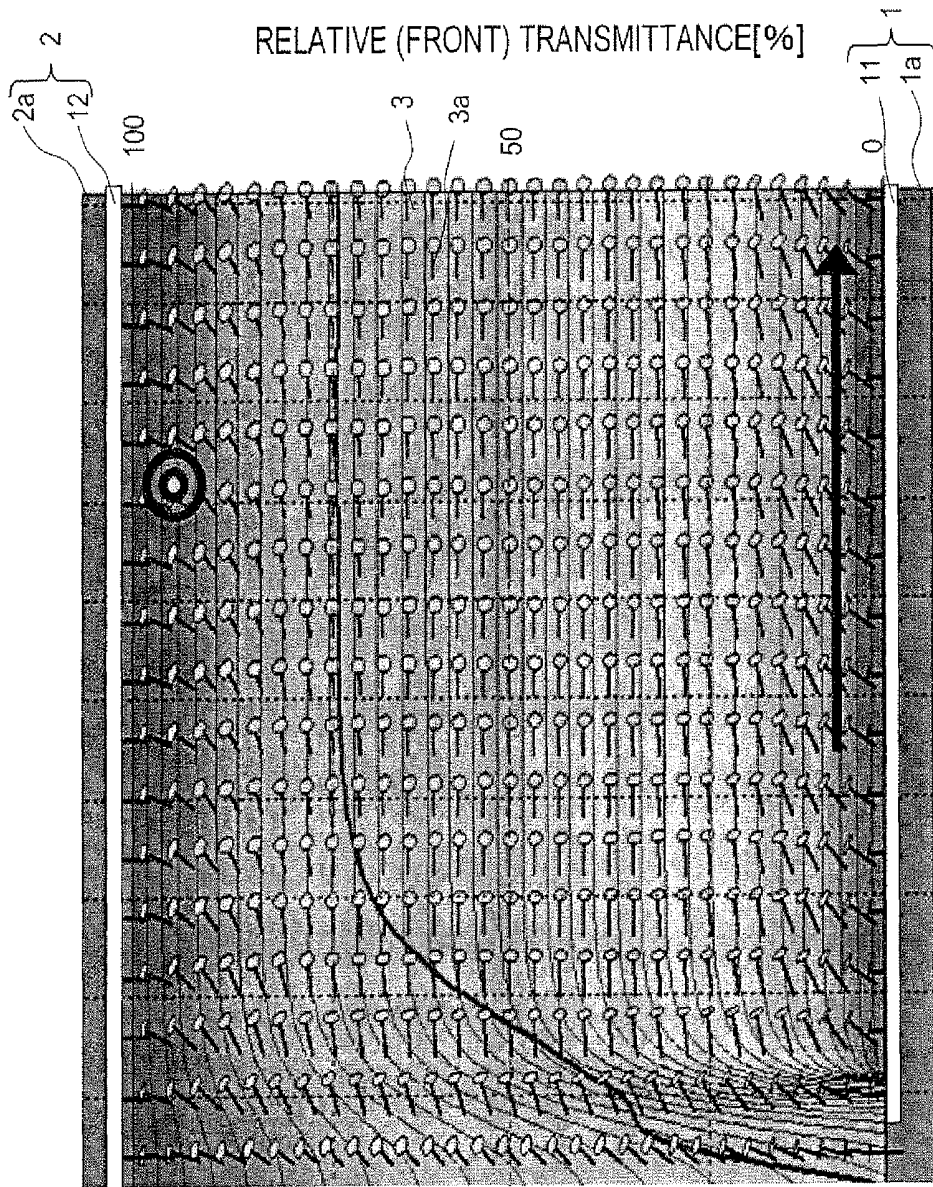
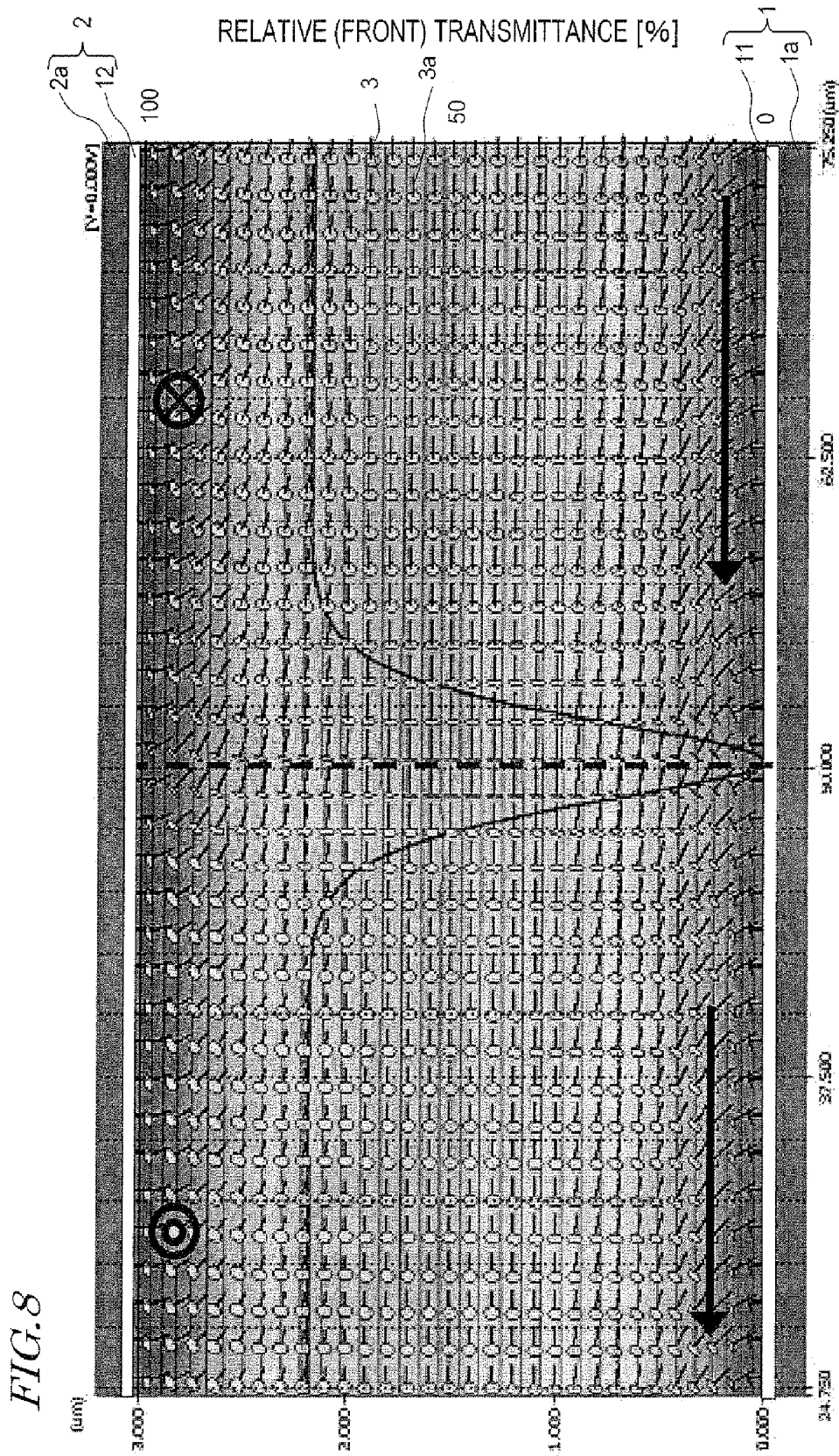
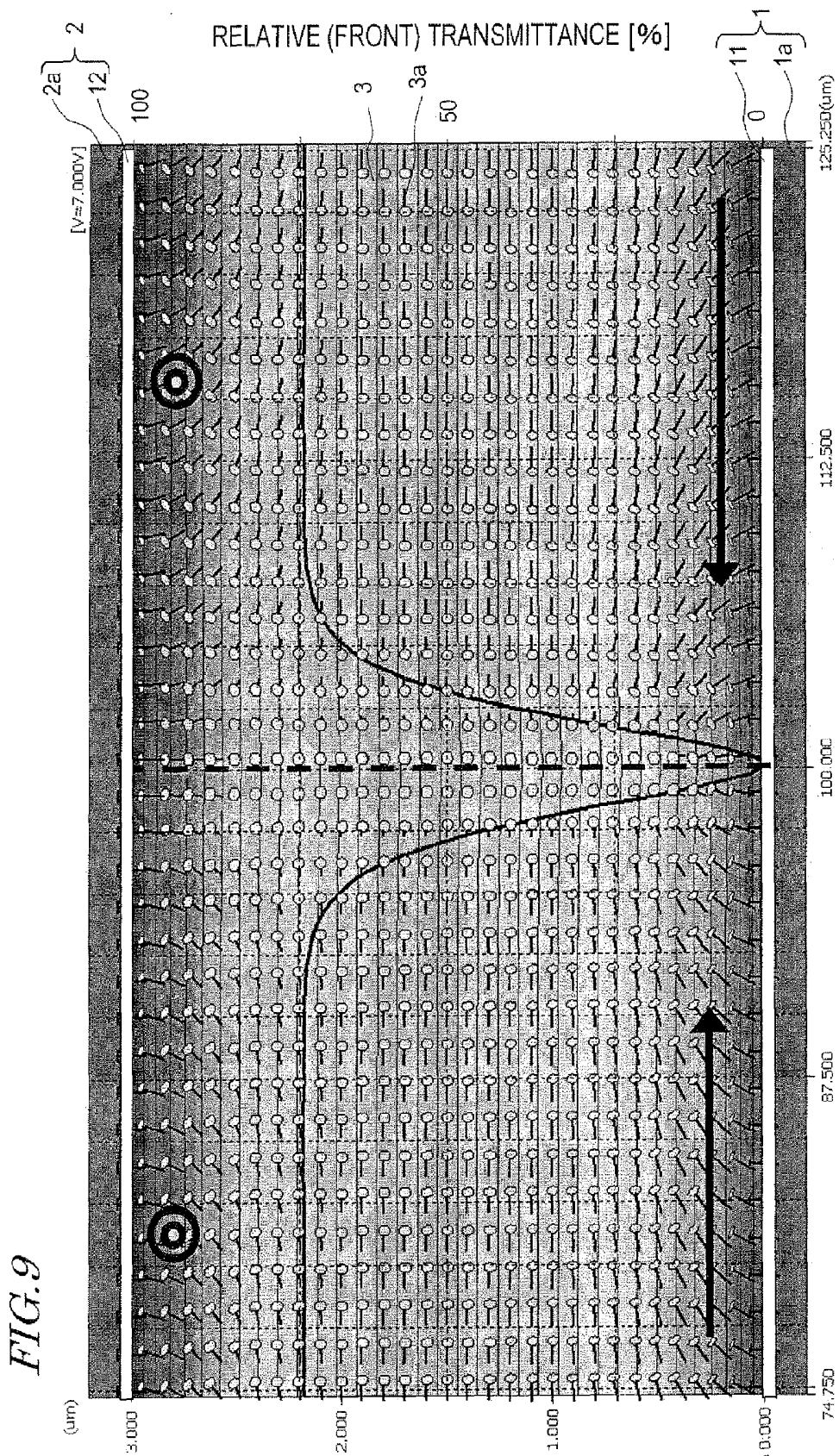


FIG. 7







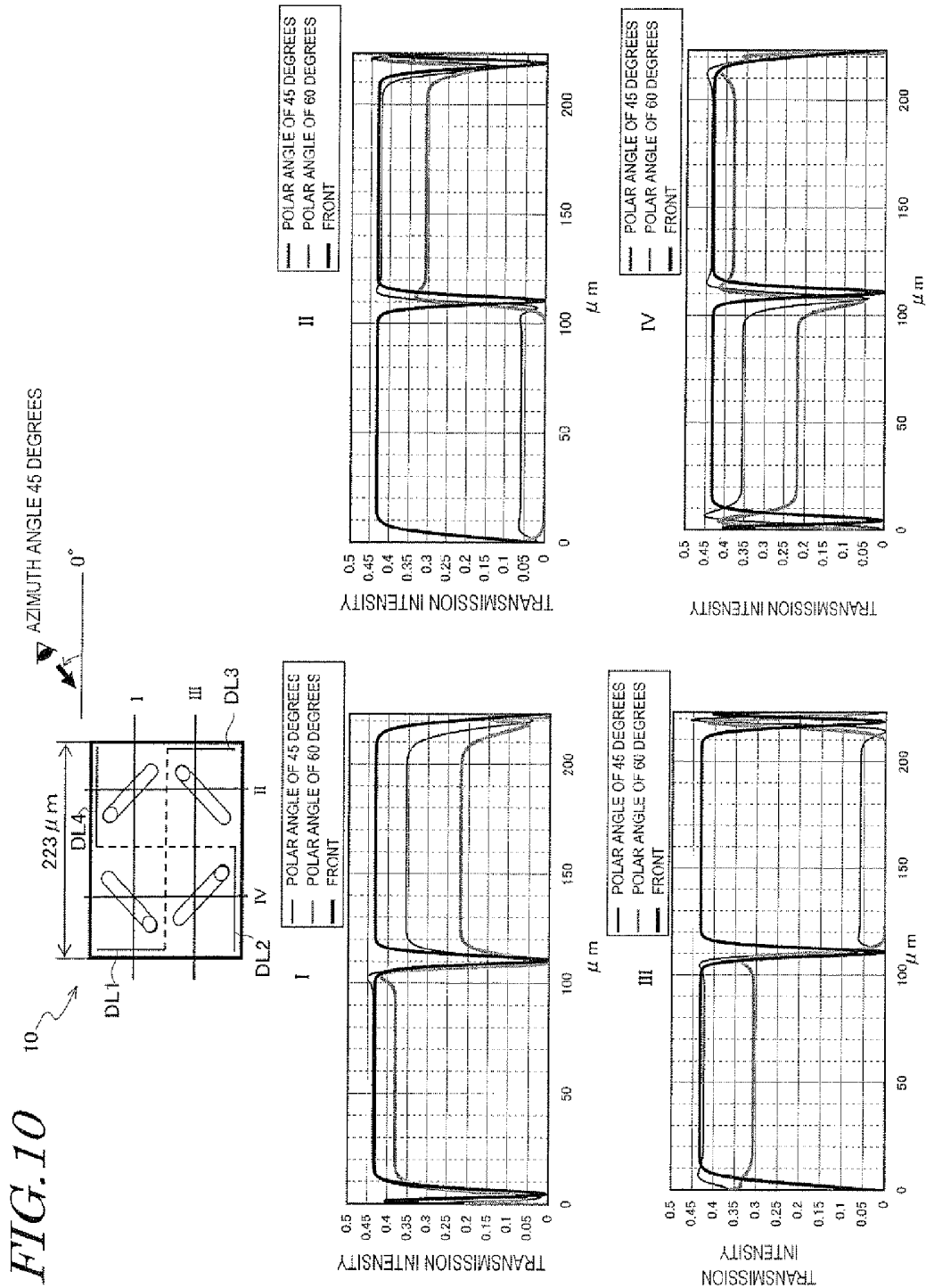


FIG. 11

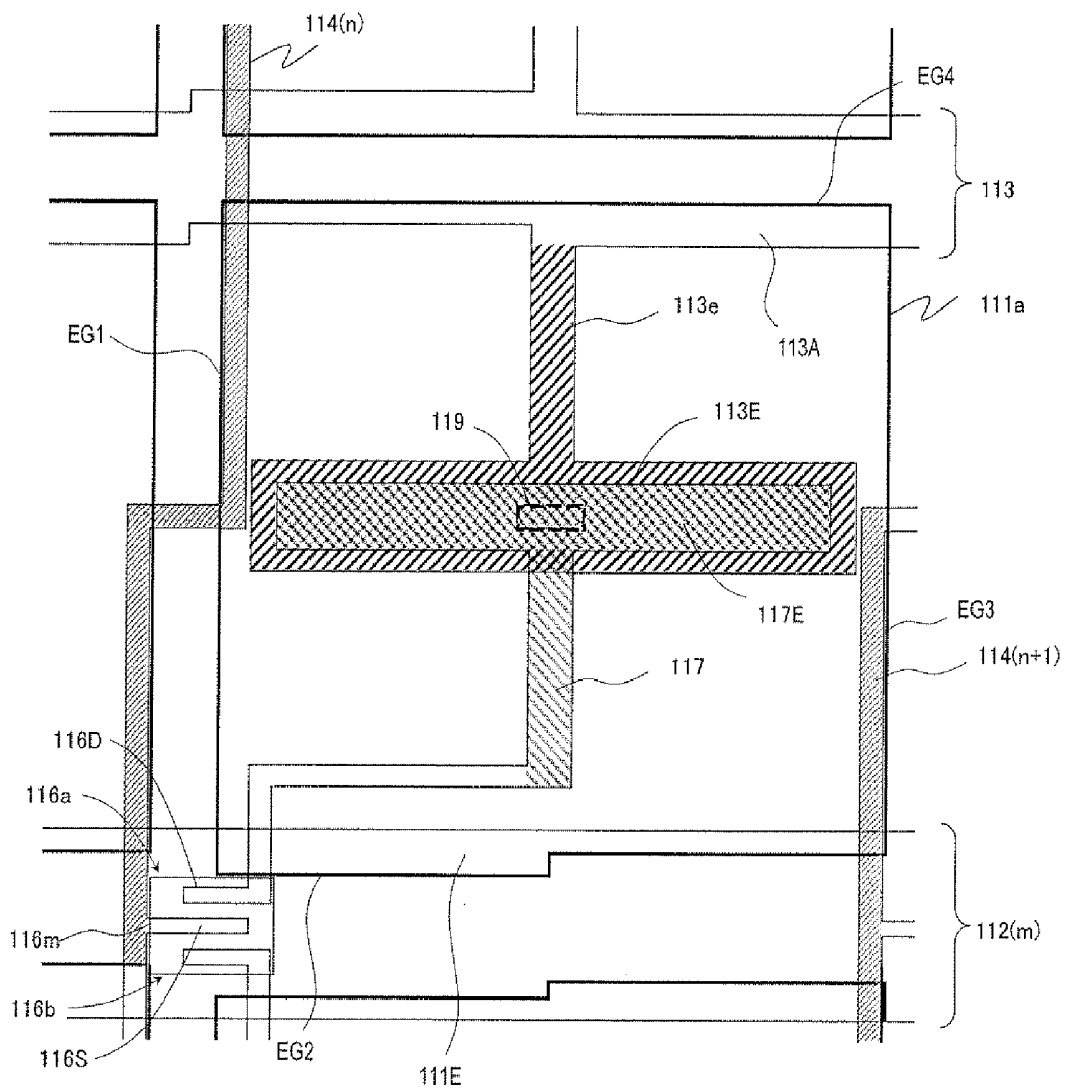


FIG. 12

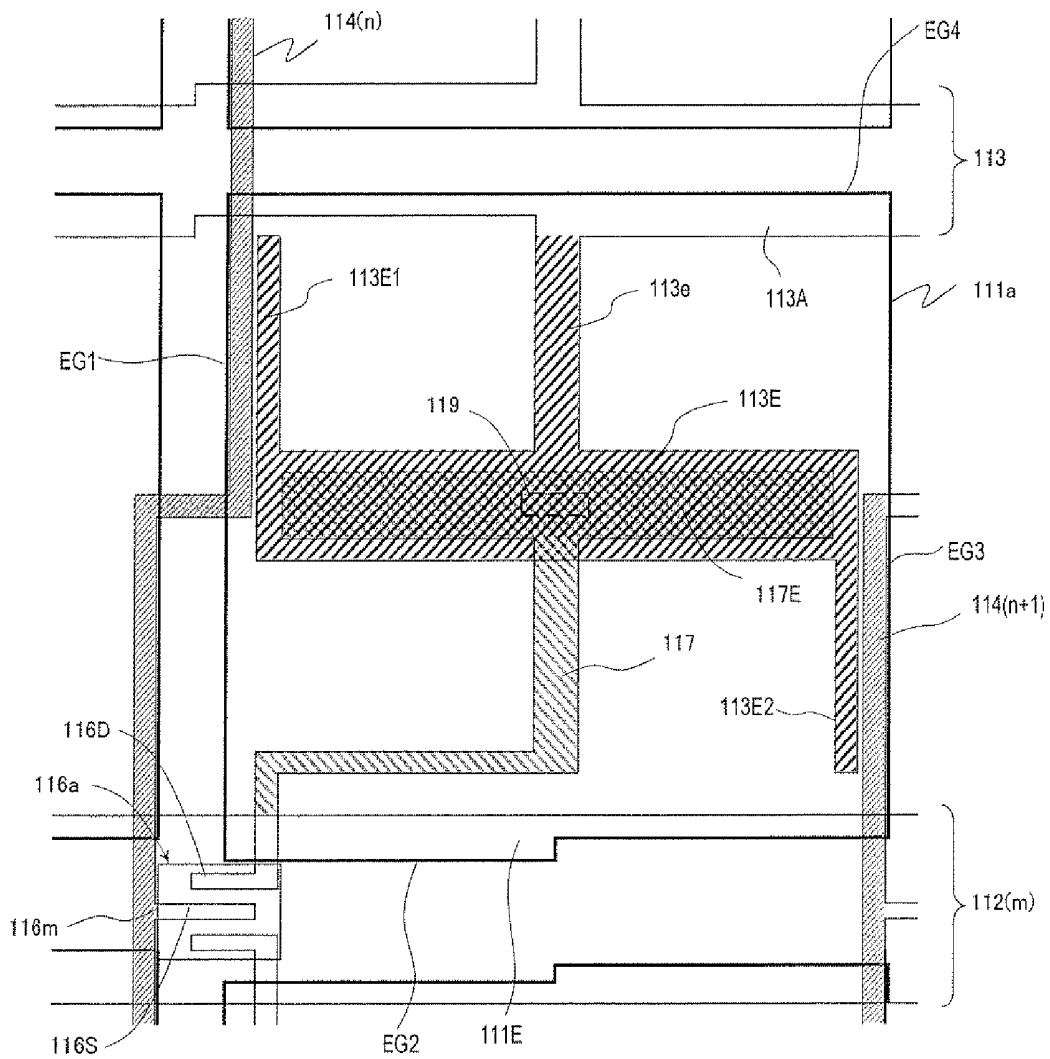


FIG. 13

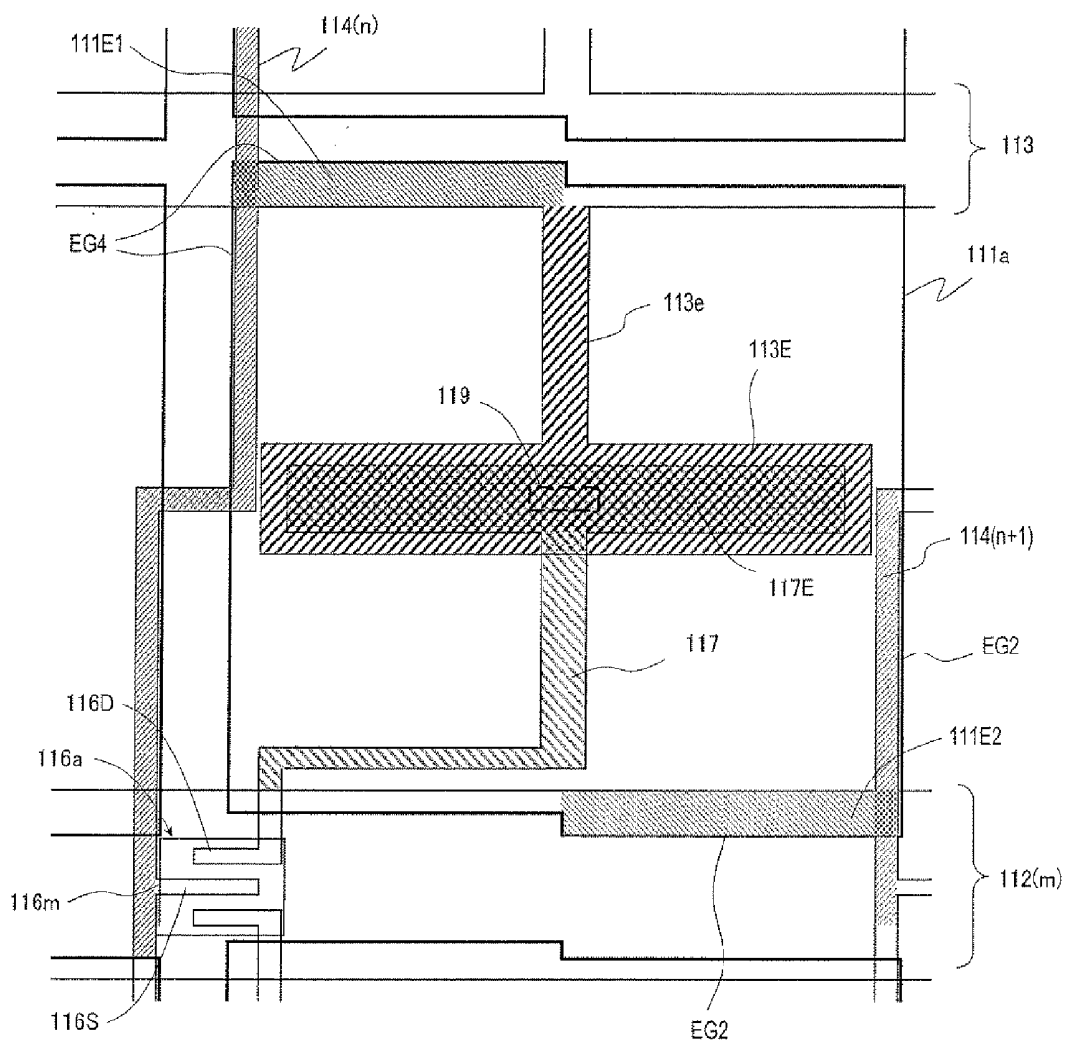


FIG. 15

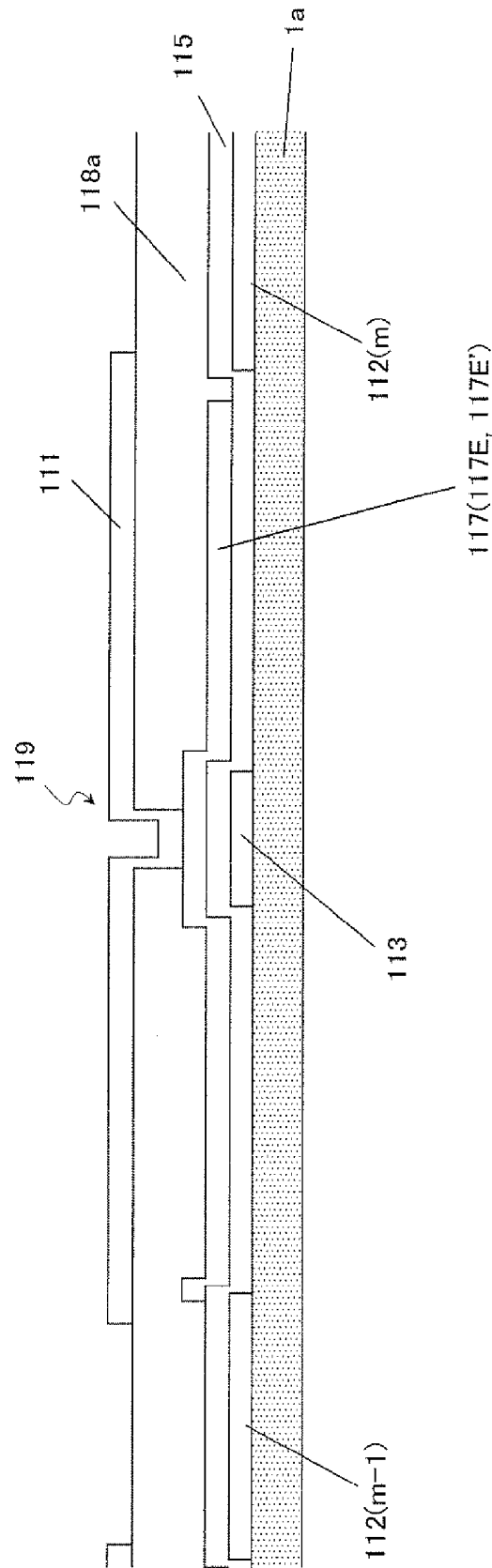


FIG. 16

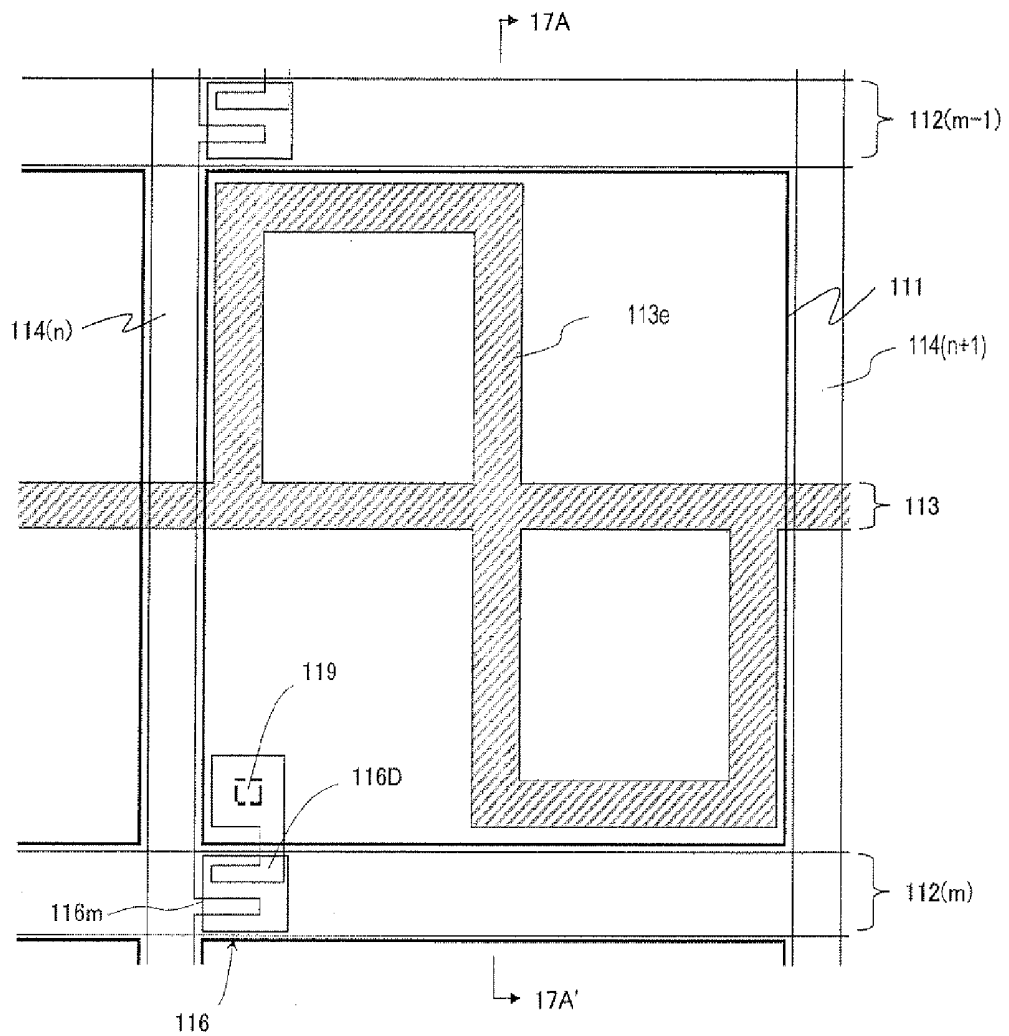


FIG. 17

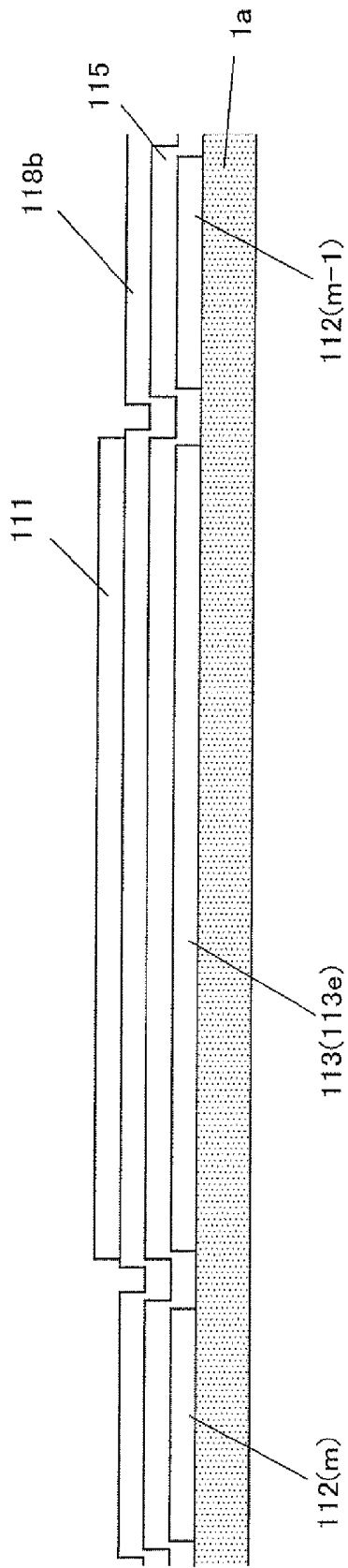


FIG. 18

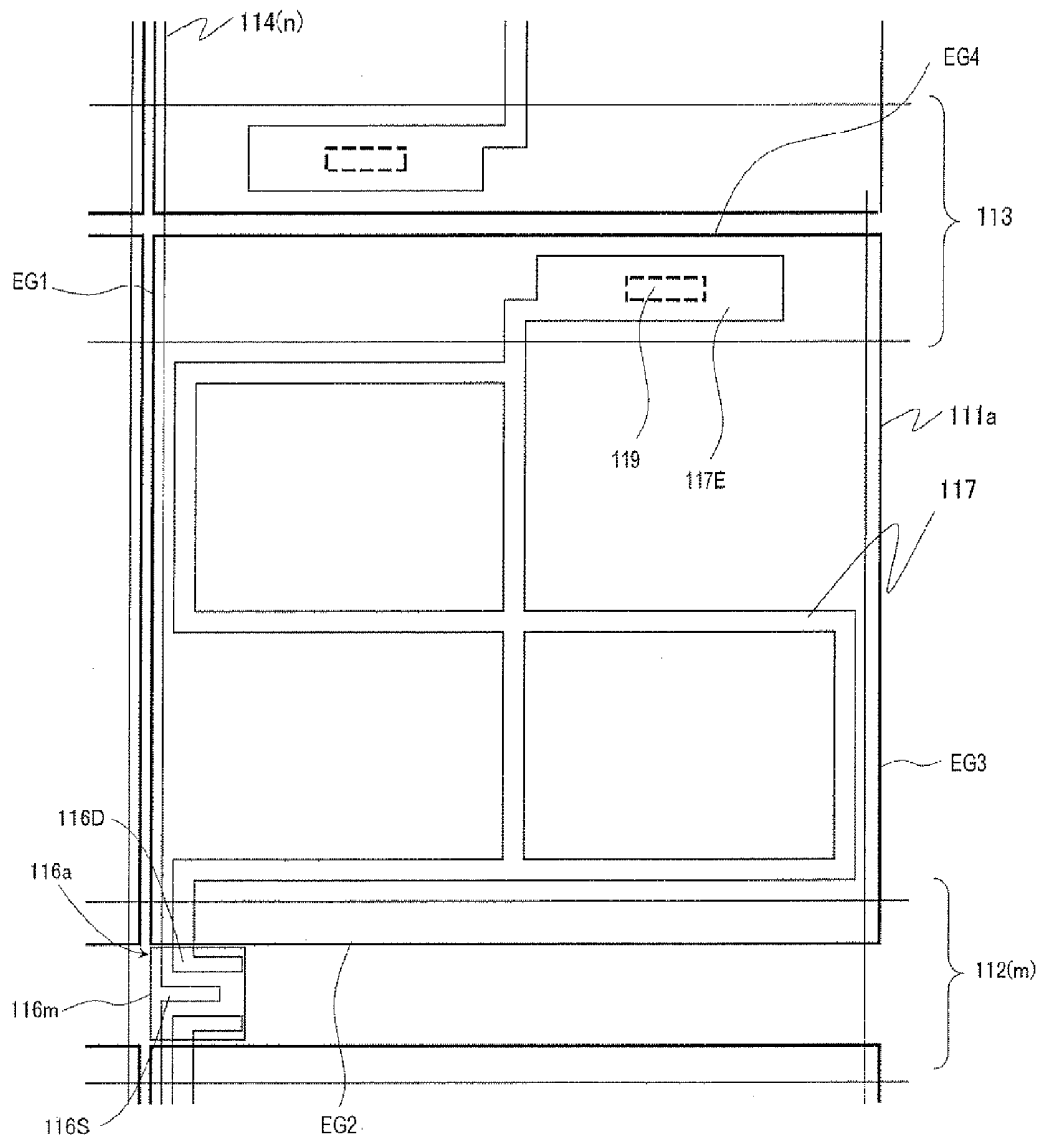


FIG. 19

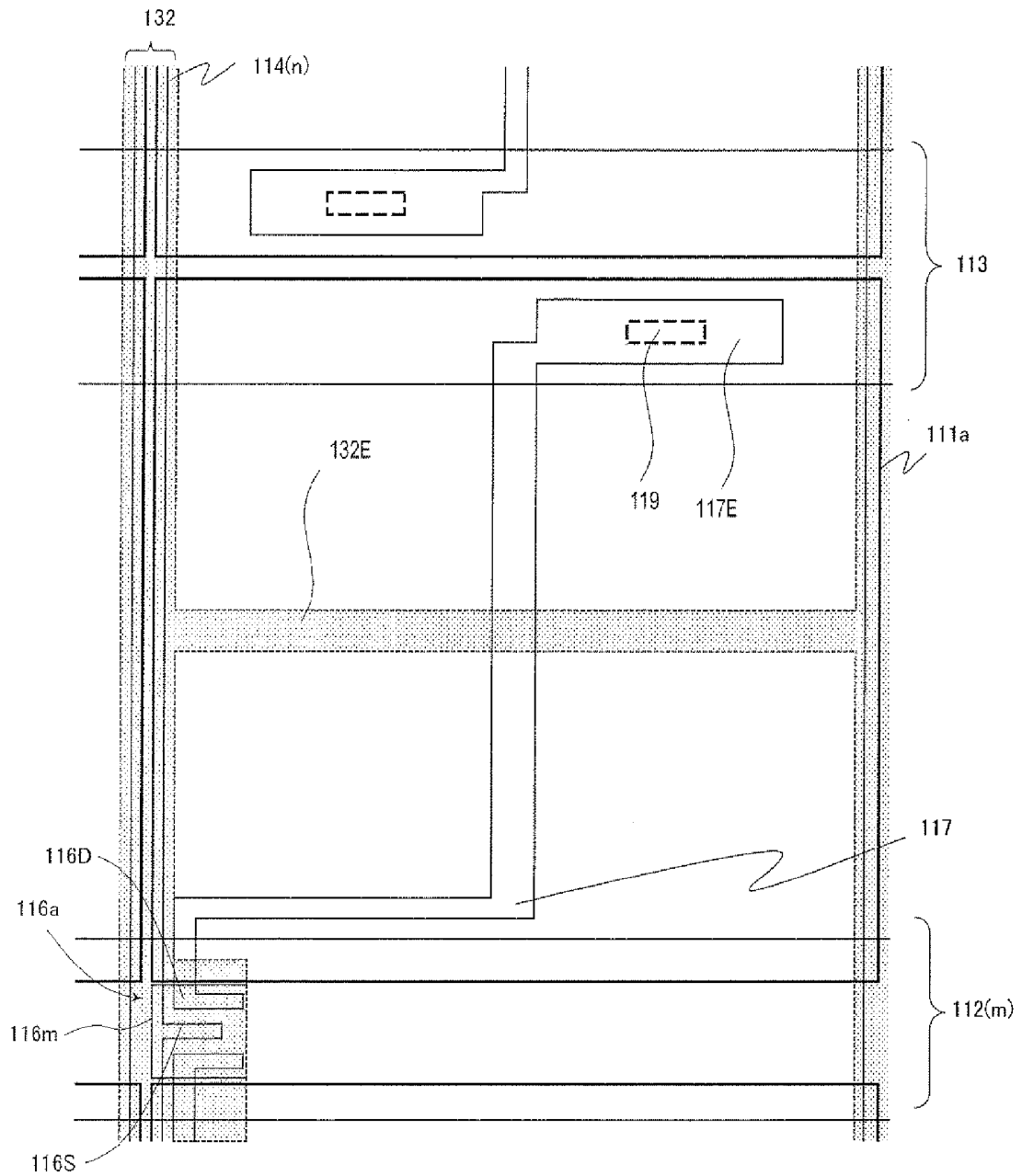


FIG. 20

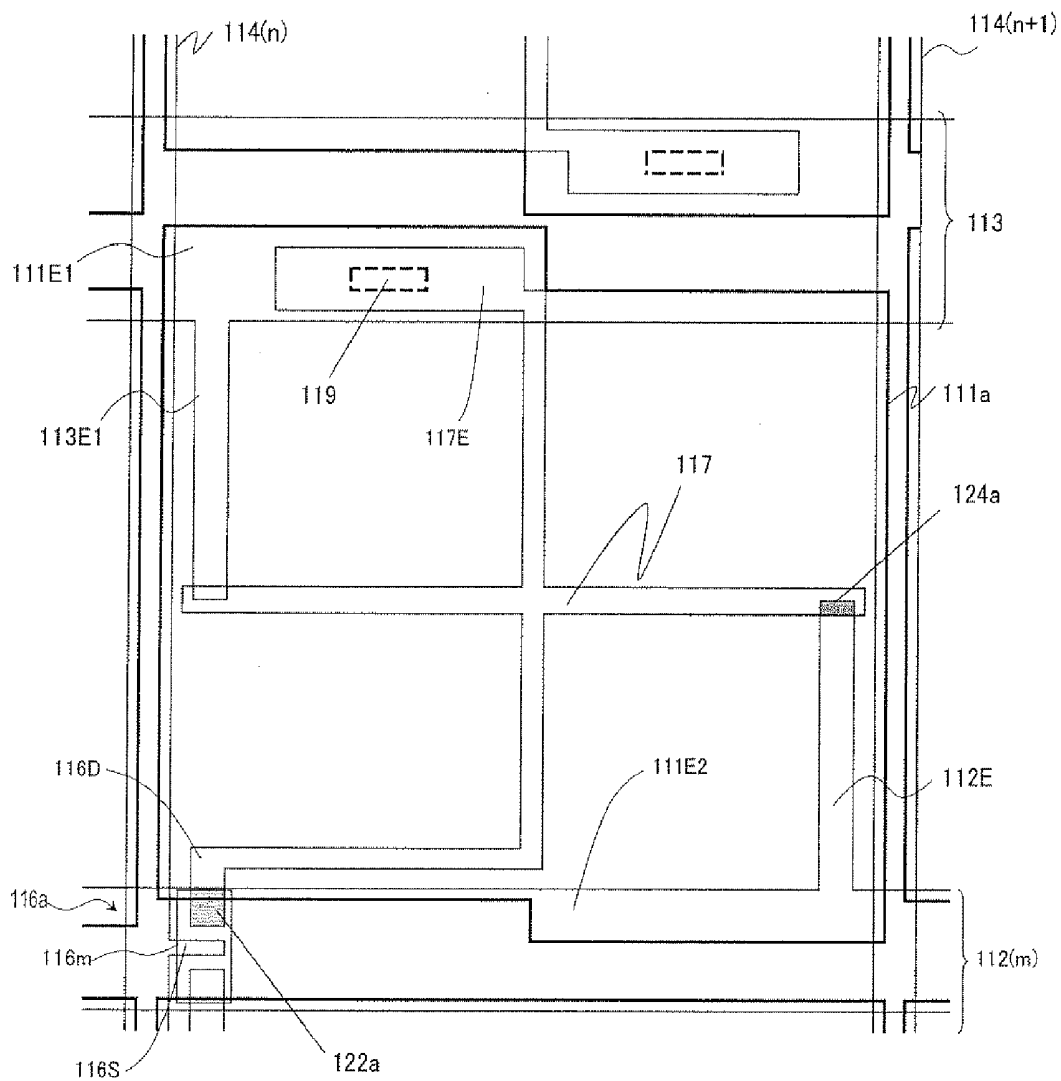


FIG. 21

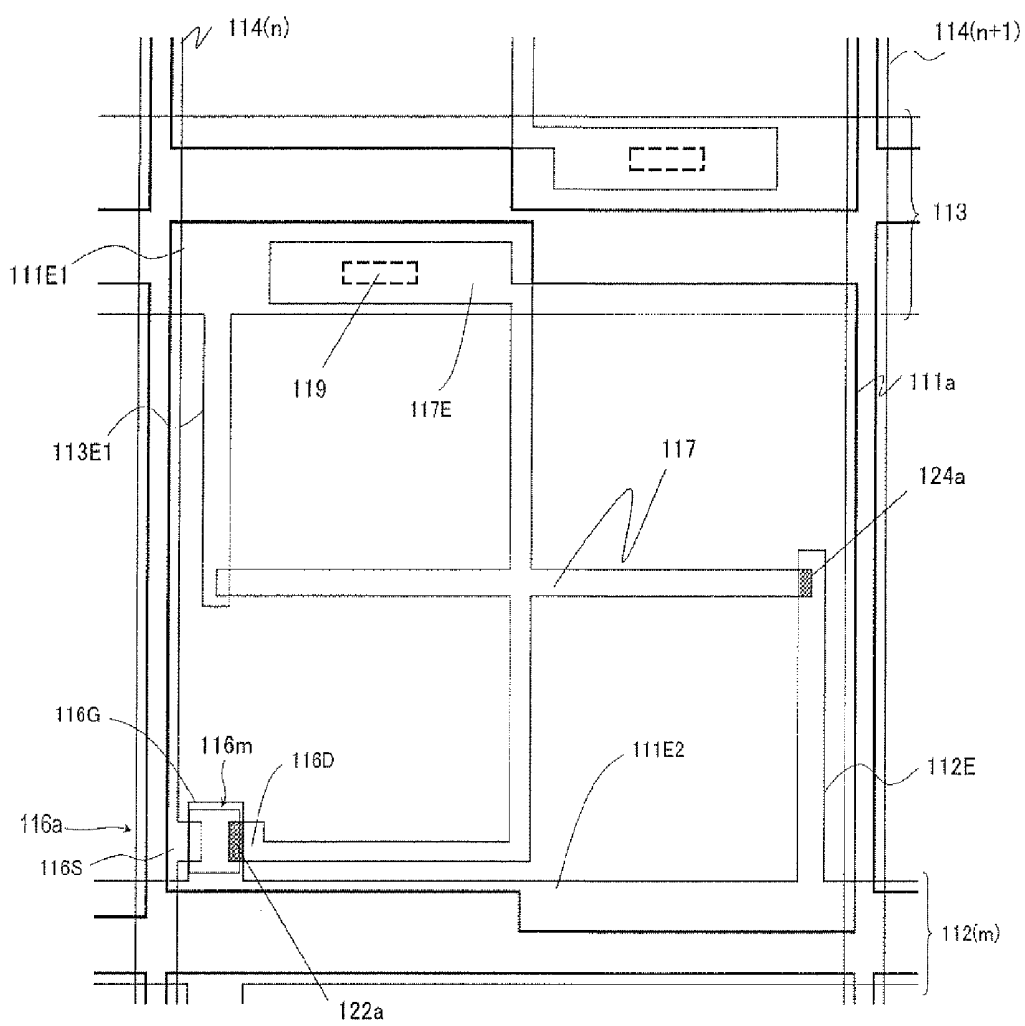


FIG. 22

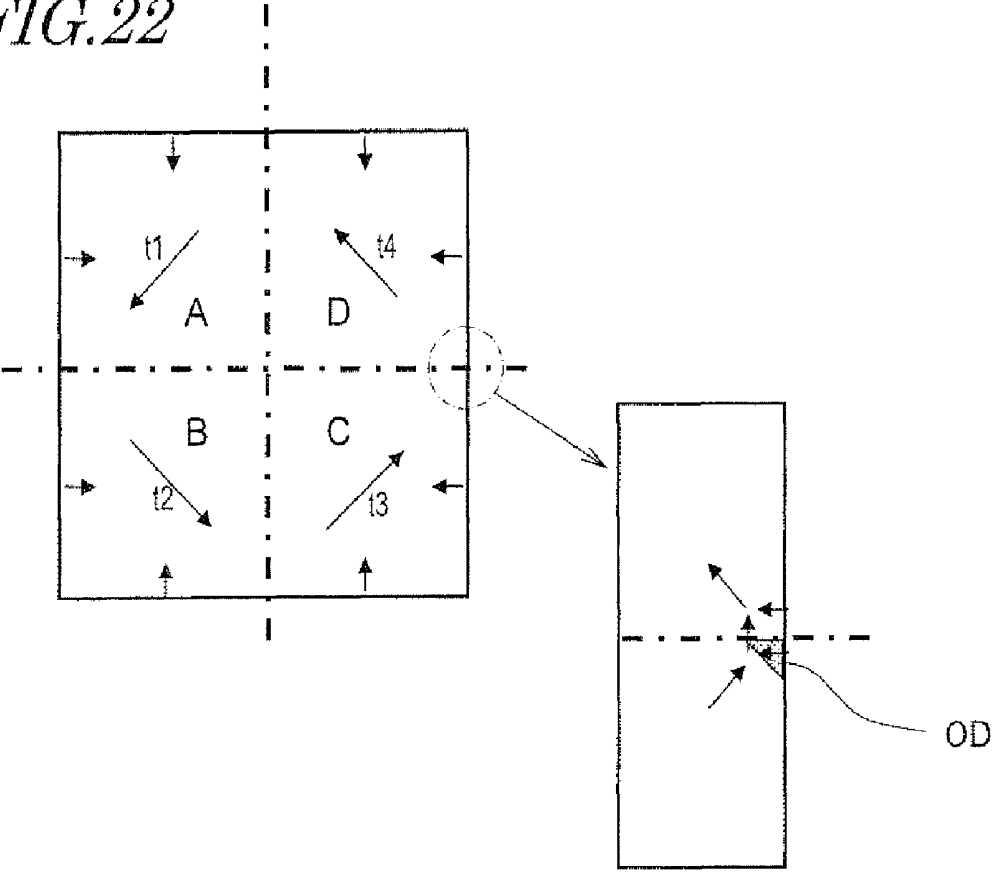


FIG. 23

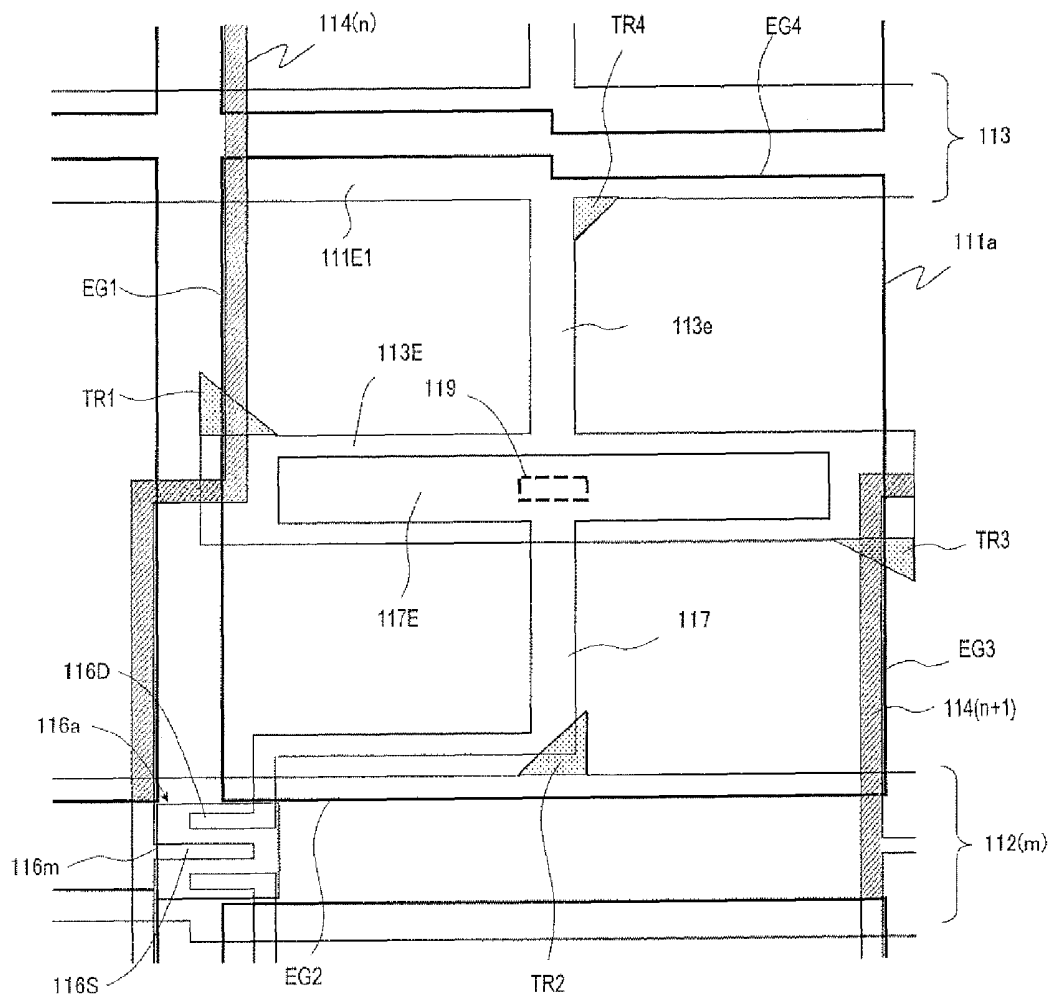


FIG. 24

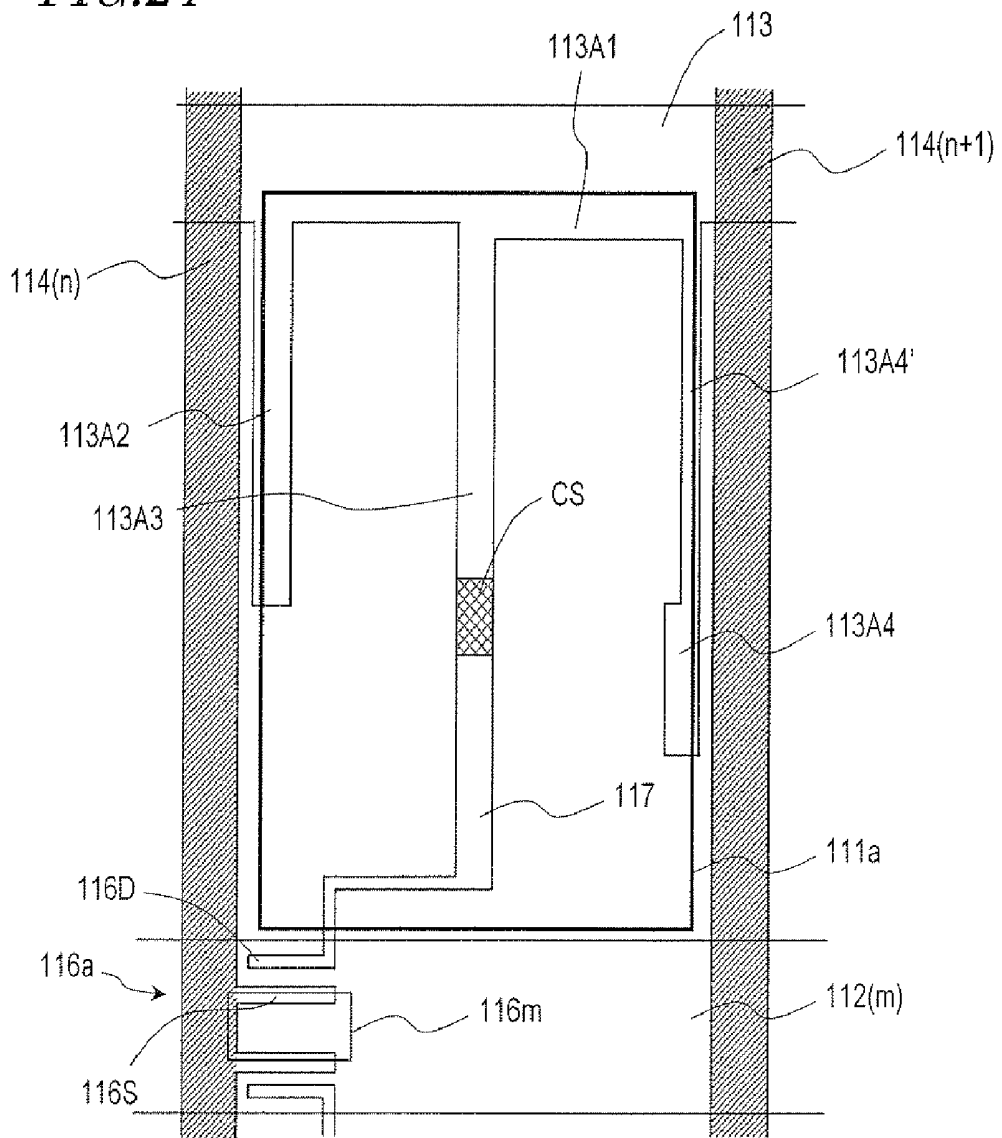


FIG. 25

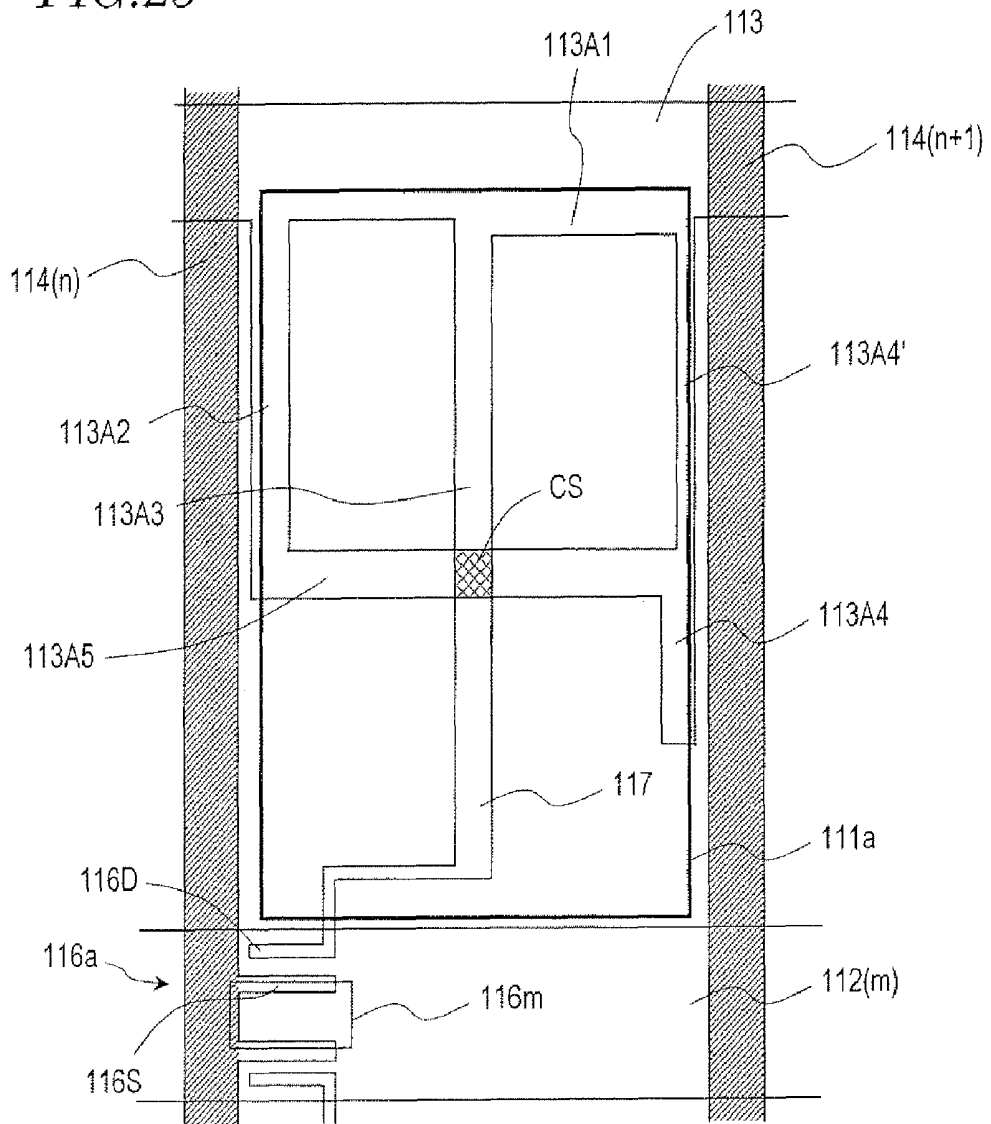


FIG. 26

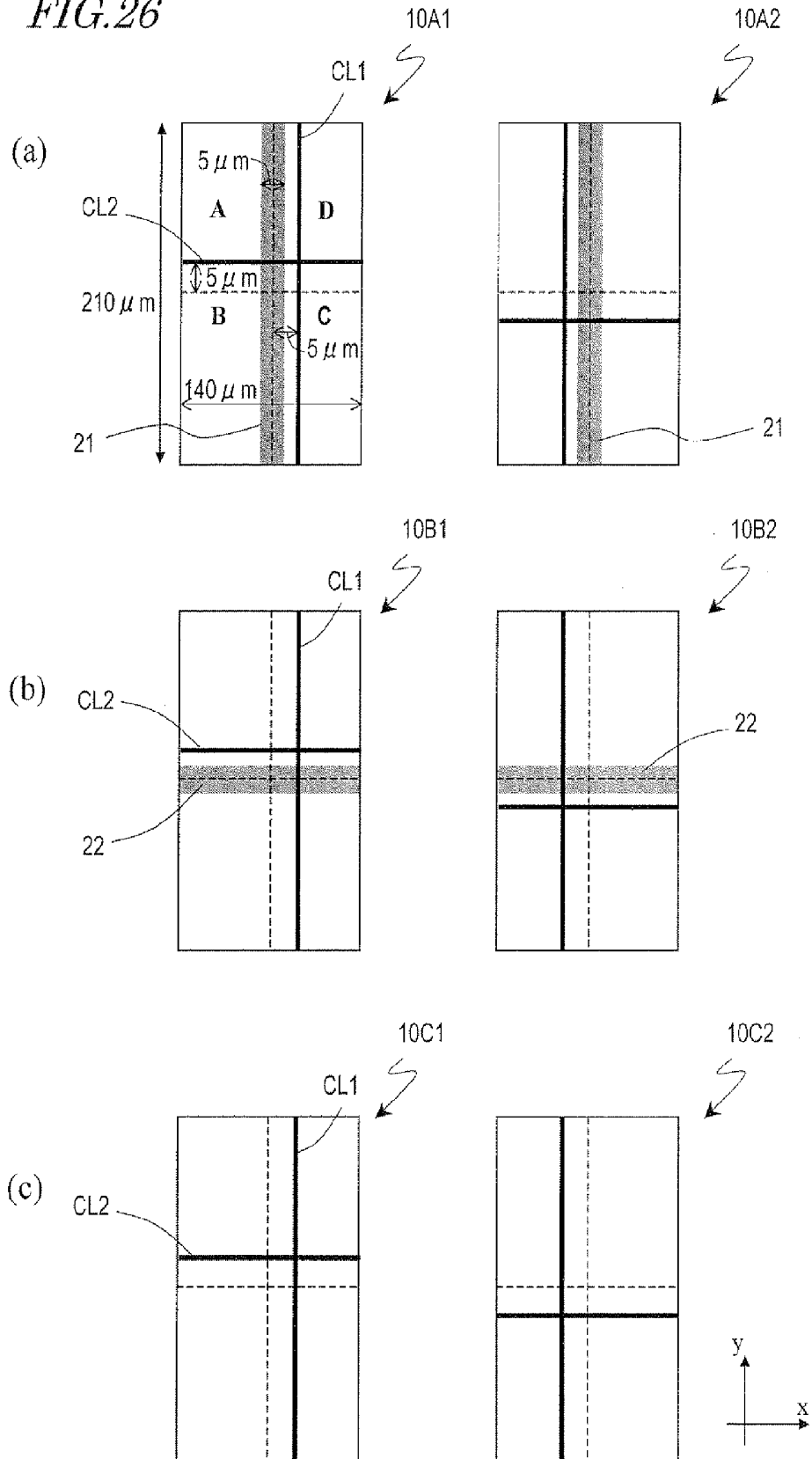


FIG. 27

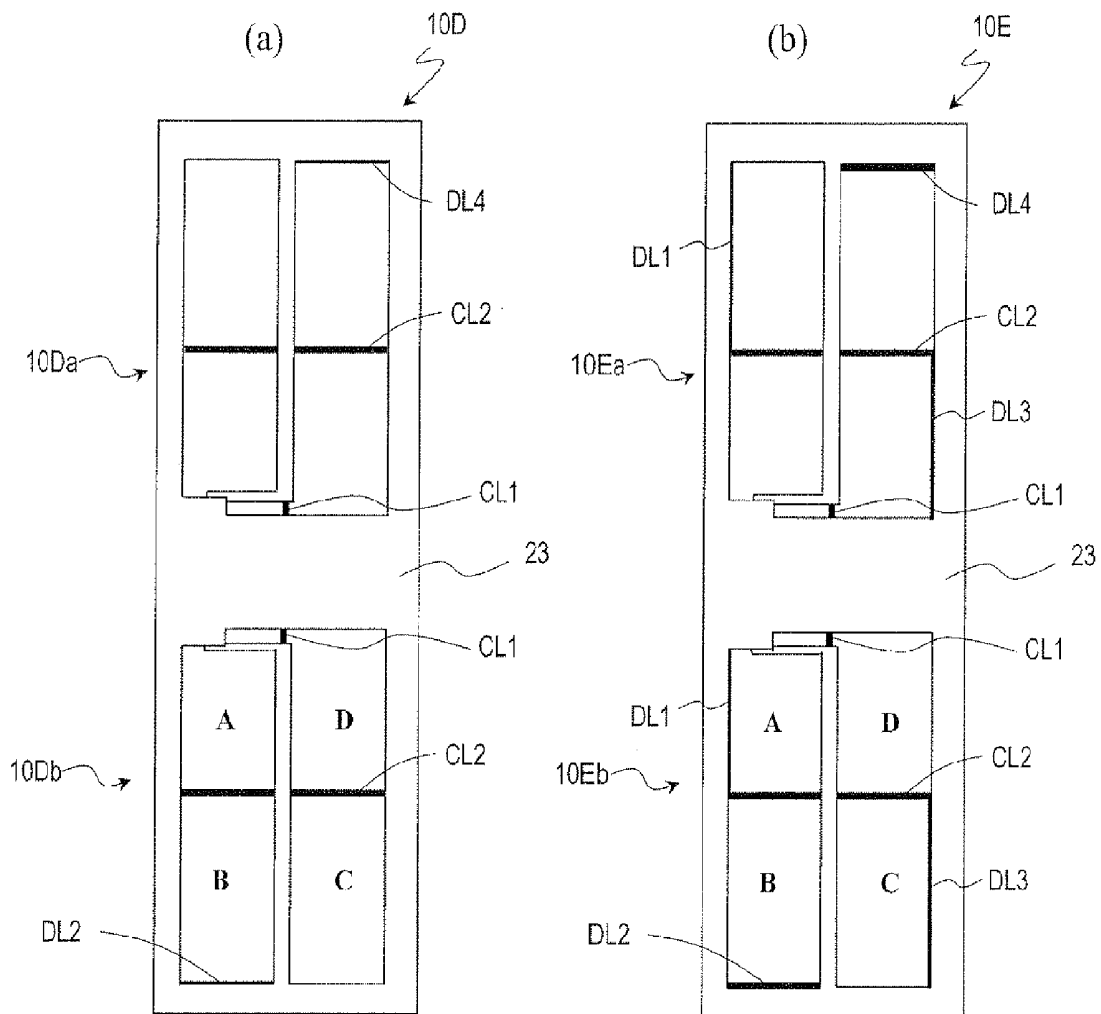


FIG.28

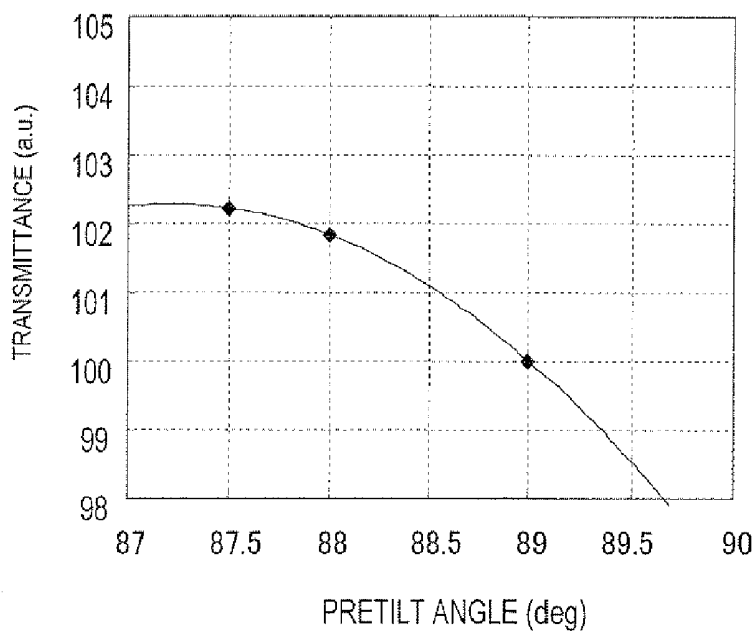
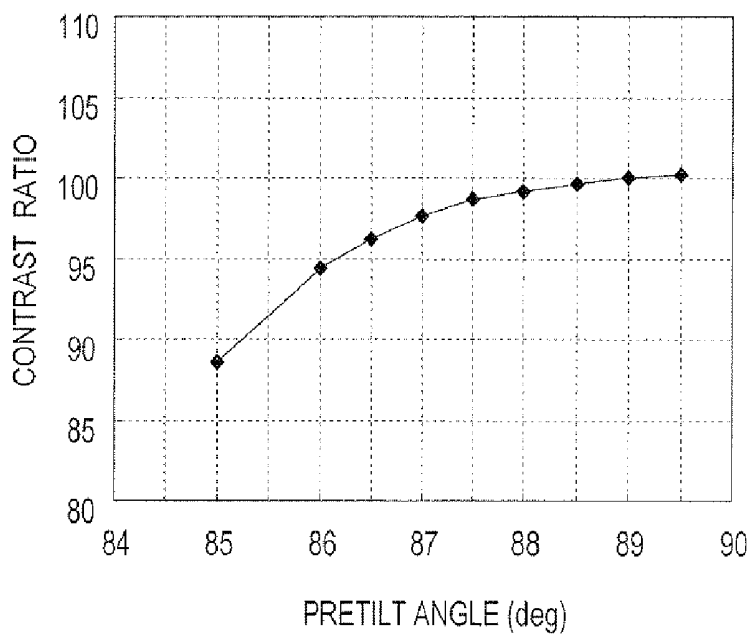


FIG.29



LIQUID CRYSTAL DISPLAY DEVICE

This application is the U.S. national phase of International Application No. PCT/JP/2006/311640 filed 9 Jun. 2006 which designated the U.S. and claims priority to JP 2005-169423 filed 9 Jun. 2005 and JP 2006-158140 filed 7 Jun. 2006, the entire contents of each of which are hereby incorporated by reference.

TECHNICAL FIELD

The present invention relates to a liquid crystal display device and more particularly relates to a liquid crystal display device with a wide viewing angle characteristic.

BACKGROUND ART

Recently, the display performances of liquid crystal displays (LCDs) have been improved to the point that more and more manufacturers adopt LCD panels as TV monitors, for example. The viewing angle characteristic of LCDs has been improved to a certain degree but not satisfactorily in some respects. Among other things, there is still a high demand for improvement of the viewing angle characteristic of an LCD using a vertical alignment liquid crystal layer (which is sometimes called a "VA mode LCD").

A VA mode LCD, which is currently used for a TV set with a big screen, for example, adopts a multi-domain structure, in which multiple liquid crystal domains are formed in a single pixel region, to improve the viewing angle characteristic. An MVA mode is often adopted as a method of forming such a multi-domain structure. Specifically, according to the MVA mode, an alignment control structure is provided on one of the two substrates, which face each other with a vertical alignment liquid crystal layer interposed between them, so as to contact with the liquid crystal layer, thereby forming multiple domains with mutually different alignment directions (i.e., tilt directions), the number of which is typically four. As the alignment control structure, a slit (as an opening) or a rib (as a projection structure) may be provided for an electrode, thereby creating an anchoring force from both sides of the liquid crystal layer.

If a slit or a rib is adopted, however, the anchoring force will be applied onto liquid crystal molecules non-uniformly within a pixel region because the slit or rib has a linear structure unlike the situation where the pretilt directions are defined by an alignment film in a conventional TN mode LCD. As a result, the response speed may have a distribution unintentionally. In addition, since the transmittance of light will decrease in the areas with the slits or ribs, the luminance of the screen will decrease, too.

Patent Document No. 1: Japanese Patent Application Laid-Open Publication No. 11-133429

Patent Document No. 2: Japanese Patent Application Laid-Open Publication No. 11-352486

DISCLOSURE OF INVENTION**Problems to be Solved by the Invention**

To avoid such a problem, the multi-domain structure is preferably formed by defining the pretilt directions with an alignment film for a VA mode LCD, too. Thus, the present inventors discovered and confirmed via experiments that a unique misalignment occurred in a VA mode LCD and affected its display quality.

Even in a conventional LCD in which the multi-domain structure is formed using an alignment film, a technique for providing an opaque portion for cutting the light that has been transmitted through an area with misalignment to minimize the deterioration in display quality due to the misalignment is also known (see Patent Document No. 1, for example).

The conventional multi-domain structure is provided with such an opaque portion to shield an area with an optical transmittance that is higher than a predetermined value (i.e., an area that looks brighter when viewed straight than an area where liquid crystal molecules are aligned normally) due to a misalignment such as a reverse tilt in a TN mode LCD, for example. However, the present inventors discovered that the display quality of a VA mode LCD could not be improved sufficiently just by shielding such an area that looked brighter when viewed straight than an area where liquid crystal molecules were aligned normally.

In order to overcome the problems described above, the present invention has an object of providing a VA mode liquid crystal display device with excellent display quality.

Means for Solving the Problems

A liquid crystal display device according to the present invention includes: a vertical alignment liquid crystal layer; a first substrate and a second substrate, which face each other with the liquid crystal layer interposed between them; a first electrode, which is arranged on the first substrate so as to face the liquid crystal layer; a second electrode, which is arranged on the second substrate so as to face the liquid crystal layer; and at least one alignment film, which is arranged in contact with the liquid crystal layer. A pixel region includes at least one liquid crystal domain that produces a dark area, which looks darker than a gray scale level being presented for a viewer located in front of the device, inside of, and substantially parallel to, an edge portion of the first electrode. Either the first substrate or the second substrate has an opaque member that includes at least one opaque portion for selectively shielding at least a portion of the dark area from incoming light.

Another liquid crystal display device according to the present invention includes: a vertical alignment liquid crystal layer; a first substrate and a second substrate, which face each other with the liquid crystal layer interposed between them; a first electrode, which is arranged on the first substrate so as to face the liquid crystal layer; a second electrode, which is arranged on the second substrate so as to face the liquid crystal layer; and at least one alignment film, which is arranged in contact with the liquid crystal layer. A pixel region includes a first liquid crystal domain in which liquid crystal molecules are tilted in a predetermined first direction around the center of a plane, and approximately at the middle of the thickness, of the liquid crystal layer in response to a voltage applied. The first liquid crystal domain is located close to at least a part of an edge of the first electrode. The part includes a first edge portion in which an azimuthal direction that is perpendicular to the part and that points toward the inside of the first electrode defines an angle greater than 90 degrees with respect to the first direction. Either the first substrate or the second substrate has an opaque member that includes a first opaque portion for selectively shielding at least a part of the first edge portion from incoming light.

In one embodiment, the pixel region further includes second, third and fourth liquid crystal domains in which liquid crystal molecules are tilted in second, third and fourth directions, respectively, around the center of the plane, and approximately at the middle of the thickness, of the liquid

crystal layer in response to the voltage applied. The first, second, third and fourth directions are defined such that an angle formed between any two of the four directions is approximately equal to an integral multiple of 90 degrees. The second liquid crystal domain is located close to at least a part of another edge of the first electrode, and the part includes a second edge portion in which an azimuthal direction that is perpendicular to the part and that points toward the inside of the first electrode defines an angle greater than 90 degrees with respect to the second direction. The third liquid crystal domain is located close to at least a part of still another edge of the first electrode, and the part includes a third edge portion in which an azimuthal direction that is perpendicular to the part and that points toward the inside of the first electrode defines an angle greater than 90 degrees with respect to the third direction. The fourth liquid crystal domain is located close to at least a part of yet another edge of the first electrode, and the part includes a fourth edge portion in which an azimuthal direction that is perpendicular to the part and that points toward the inside of the first electrode defines an angle greater than 90 degrees with respect to the fourth direction. The opaque member further includes second, third and fourth opaque portions for selectively shielding at least a part of the second, third and fourth edge portions, respectively, from incoming light.

In one embodiment, the first, second, third and fourth liquid crystal domains are arranged such that the tilt directions of any two adjacent ones of the liquid crystal domains define an angle of approximately 90 degrees between them.

In one embodiment, if the horizontal direction of a display screen has an azimuthal angle of zero degrees, the first, second, third and fourth directions are an approximately 225 degree direction, an approximately 315 degree direction, an approximately 45 degree direction and an approximately 135 degree direction, respectively. The first and third edge portions are parallel to a vertical direction and the second and fourth edge portions are parallel to the horizontal direction.

In one embodiment, if the horizontal direction of a display screen has an azimuthal angle of zero degrees, the first, second, third and fourth directions are an approximately 225 degree direction, an approximately 315 degree direction, an approximately 45 degree direction and an approximately 135 degree direction, respectively. The first and third edge portions are parallel to the horizontal direction and the second and fourth edge portions are parallel to a vertical direction.

In one embodiment, if the horizontal direction of a display screen has an azimuthal angle of zero degrees, the first, second, third and fourth directions are an approximately 225 degree direction, an approximately 315 degree direction, an approximately 45 degree direction and an approximately 135 degree direction, respectively. Each of the first, second, third and fourth edge portions includes a first part that is parallel to the horizontal direction and a second part that is parallel to a vertical direction.

In one embodiment, the pixel region further includes second, third and fourth liquid crystal domains in which liquid crystal molecules are tilted in second, third and fourth directions, respectively, around the center of the plane, and approximately at the middle of the thickness, of the liquid crystal layer in response to the voltage applied. The first, second, third and fourth directions are defined such that an angle formed between any two of the four directions is approximately equal to an integral multiple of 90 degrees. The first and second directions form an angle of approximately 180 degrees between them. The second liquid crystal domain is located close to at least a part of another edge of the first electrode, and the part includes a second edge portion in

which an azimuthal direction that is perpendicular to the part and that points toward the inside of the first electrode defines an angle greater than 90 degrees with respect to the second direction. Each of the first and second edge portions includes a first part that is parallel to the horizontal direction and a second part that is parallel to a vertical direction. And the opaque member further includes a second opaque portion for selectively shielding at least a part of the second edge portion from incoming light.

In one embodiment, if the horizontal direction on the display screen has an azimuthal angle of zero degrees, the first direction is either an approximately 135 degree direction or an approximately 225 degree direction.

In one embodiment, if the horizontal direction of a display screen has an azimuthal angle of zero degrees, the first, second, third and fourth directions are an approximately 90 degree direction, an approximately 180 degree direction, an approximately 0 degree direction and an approximately 270 degree direction, respectively. The first and fourth edge portions are parallel to the horizontal direction and the second and third edge portions are parallel to a vertical direction.

In one embodiment, if the horizontal direction of a display screen has an azimuthal angle of zero degrees, the first, second, third and fourth directions are an approximately 225 degree direction, an approximately 315 degree direction, an approximately 45 degree direction and an approximately 135 degree direction, respectively. The first, second, third and fourth edge portions are all parallel to a vertical direction.

In one embodiment, the opaque member includes a central opaque portion for selectively shielding at least a portion of a boundary area of each of the first, second, third and fourth liquid crystal domains, which is adjacent to another one of the liquid crystal domains, from incoming light.

In one embodiment, the opaque member includes another opaque portion for shielding an intersection between a boundary area of each of the first, second, third and fourth liquid crystal domains, which is adjacent to another one of the liquid crystal domains, and one of the first, second, third and fourth edge portions from incoming light.

In one embodiment, the first substrate further includes a TFT, a gate bus line, a source bus line, a drain extension line, and a storage capacitor line. One of the first, second, third, fourth, central and another opaque portions is defined by at least a portion of at least one line selected from the group consisting of the gate bus line, the source bus line, the drain extension line, and the storage capacitor line.

In one embodiment, the at least one line has a portion that is bent or broadened in a direction that crosses its length direction, and the at least the portion of the at least one line includes at least a part of the bent or broadened portion.

In one embodiment, the second substrate further includes a black matrix layer, and one of the first, second, third, fourth, central and another opaque portions is defined by a portion of the black matrix layer.

In one embodiment, the liquid crystal display device further includes two polarizers, which are arranged so as to face each other with the liquid crystal layer interposed between them and to have their transmission axes crossed at right angles. The first, second, third and fourth directions define an angle of approximately 45 degrees with respect to the transmission axes of the two polarizers.

In one embodiment, the vertical alignment liquid crystal layer includes a liquid crystal material with negative dielectric anisotropy. The at least one alignment film includes two alignment films that are arranged so as to sandwich the liquid crystal layer between them. Respective pretilt directions

defined by the two alignment films are different from each other by approximately 90 degrees.

In one embodiment, the at least one alignment film includes two alignment films that are arranged so as to sandwich the liquid crystal layer between them. Respective pretilt angles defined by the two alignment films are substantially equal to each other.

In one embodiment, the at least one alignment film is a photo-alignment film.

Still another liquid crystal display device according to the present invention includes: a vertical alignment liquid crystal layer; a first substrate and a second substrate, which face each other with the liquid crystal layer interposed between them; a first electrode, which is arranged on the first substrate so as to face the liquid crystal layer; a second electrode, which is arranged on the second substrate so as to face the liquid crystal layer; and at least one alignment film, which is arranged in contact with the liquid crystal layer. A pixel region includes first, second, third and fourth liquid crystal domains in which liquid crystal molecules are tilted in first, second, third and fourth directions, respectively, around the center of a plane, and approximately at the middle of the thickness, of the liquid crystal layer in response to a voltage applied. The first, second, third and fourth directions are defined such that an angle formed between any two of the four directions is approximately equal to an integral multiple of 90 degrees. Each of the first, second, third and fourth liquid crystal domains is adjacent to another one of the liquid crystal domains. An opaque member includes a central opaque portion for selectively shielding at least a portion of a boundary area of each of the first, second, third and fourth liquid crystal domains, which is adjacent to another one of the liquid crystal domains, from incoming light.

In one embodiment, the first liquid crystal domain is located close to at least a part of an edge of the first electrode, and the part includes a first edge portion in which an azimuthal direction that is perpendicular to the part and that points toward the inside of the first electrode defines an angle greater than 90 degrees with respect to the first direction. The second liquid crystal domain is located close to at least a part of another edge of the first electrode, and the part includes a second edge portion in which an azimuthal direction that is perpendicular to the part and that points toward the inside of the first electrode defines an angle greater than 90 degrees with respect to the second direction. The third liquid crystal domain is located close to at least a part of still another edge of the first electrode, and the part includes a third edge portion in which an azimuthal direction that is perpendicular to the part and that points toward the inside of the first electrode defines an angle greater than 90 degrees with respect to the third direction. The fourth liquid crystal domain is located close to at least a part of yet another edge of the first electrode, and the part includes a fourth edge portion in which an azimuthal direction that is perpendicular to the part and that points toward the inside of the first electrode defines an angle greater than 90 degrees with respect to the fourth direction.

In one embodiment, the first, second, third and fourth liquid crystal domains are arranged in two rows and two columns so as to define a matrix pattern.

In one embodiment, the first, second, third and fourth liquid crystal domains are arranged in line in a predetermined direction.

In one embodiment, the first substrate further includes a TFT, a gate bus line, a source bus line, a drain extension line, and a storage capacitor line, and the central opaque portion is defined by at least a portion of at least one line selected from

the group consisting of the gate bus line, the source bus line, the drain extension line, and the storage capacitor line.

In one embodiment, the at least one line has a portion that is bent or broadened in a direction that crosses its length direction, and the at least the portion of the at least one line includes at least a part of the bent or broadened portion.

In one embodiment, the second substrate further includes a black matrix layer, and the central opaque portion is defined by a portion of the black matrix layer.

In one embodiment, the liquid crystal display device further includes two polarizers, which are arranged so as to face each other with the liquid crystal layer interposed between them and to have their transmission axes crossed at right angles. The first, second, third and fourth directions define an angle of approximately 45 degrees with respect to the transmission axes of the two polarizers.

In one embodiment, the vertical alignment liquid crystal layer includes a liquid crystal material with negative dielectric anisotropy. The at least one alignment film includes two alignment films that are arranged so as to sandwich the liquid crystal layer between them. Respective pretilt directions defined by the two alignment films are different from each other by approximately 90 degrees.

In one embodiment, the at least one alignment film includes two alignment films that are arranged so as to sandwich the liquid crystal layer between them, and respective pretilt angles defined by the two alignment films are substantially equal to each other.

In one embodiment, the at least one alignment film is a photo-alignment film.

Yet another liquid crystal display device according to the present invention includes: a vertical alignment liquid crystal layer; a first substrate and a second substrate, which face each other with the liquid crystal layer interposed between them; a first electrode, which is arranged on the first substrate so as to face the liquid crystal layer; a second electrode, which is arranged on the second substrate so as to face the liquid crystal layer; and at least one alignment film, which is arranged in contact with the liquid crystal layer. A pixel region includes first, second, third and fourth liquid crystal domains in which liquid crystal molecules are tilted in first, second, third and fourth directions, respectively, around the center of a plane, and approximately at the middle of the thickness, of the liquid crystal layer in response to a voltage applied. The first, second, third and fourth directions are defined such that an angle formed between any two of the four directions is approximately equal to an integral multiple of 90 degrees. The first liquid crystal domain is located close to at least a part of an edge of the first electrode, and the part includes a first edge portion in which an azimuthal direction that is perpendicular to the part and that points toward the inside of the first electrode defines an angle greater than 90 degrees with respect to the first direction. The second liquid crystal domain is located close to at least a part of another edge of the first electrode, and the part includes a second edge portion in which an azimuthal direction that is perpendicular to the part and that points toward the inside of the first electrode defines an angle greater than 90 degrees with respect to the second direction. The third liquid crystal domain is located close to at least a part of still another edge of the first electrode, and the part includes a third edge portion in which an azimuthal direction that is perpendicular to the part and that points toward the inside of the first electrode defines an angle greater than 90 degrees with respect to the third direction. The fourth liquid crystal domain is located close to at least a part of yet another edge of the first electrode, and the part includes a fourth edge portion in which an azimuthal

direction that is perpendicular to the part and that points toward the inside of the first electrode defines an angle greater than 90 degrees with respect to the fourth direction. Each of the first, second, third and fourth liquid crystal domains is adjacent to another one of the liquid crystal domains. Either the first substrate or the second substrate includes an opaque member, which includes an opaque portion for shielding an intersection between a boundary area of each of the first, second, third and fourth liquid crystal domains, which is adjacent to another one of the liquid crystal domains, and one of the first, second, third and fourth edge portions from incoming light.

In one embodiment, the first, second, third and fourth liquid crystal domains are arranged such that the tilt directions of any two adjacent ones of the liquid crystal domains define an angle of approximately 90 degrees between them.

In one embodiment, if the horizontal direction of a display screen has an azimuthal angle of zero degrees, the first, second, third and fourth directions are an approximately 225 degree direction, an approximately 315 degree direction, an approximately 45 degree direction and an approximately 135 degree direction, respectively. The first and third edge portions are parallel to a vertical direction and the second and fourth edge portions are parallel to the horizontal direction.

In one embodiment, if the horizontal direction of a display screen has an azimuthal angle of zero degrees, the first, second, third and fourth directions are an approximately 225 degree direction, an approximately 315 degree direction, an approximately 45 degree direction and an approximately 135 degree direction, respectively. The first and third edge portions are parallel to the horizontal direction and the second and fourth edge portions are parallel to a vertical direction.

In one embodiment, if the horizontal direction of a display screen has an azimuthal angle of zero degrees, the first, second, third and fourth directions are an approximately 90 degree direction, an approximately 180 degree direction, an approximately 0 degree direction and an approximately 270 degree direction, respectively. The first and fourth edge portions are parallel to the horizontal direction and the second and third edge portions are parallel to a vertical direction.

In one embodiment, if the horizontal direction of a display screen has an azimuthal angle of zero degrees, the first, second, third and fourth directions are an approximately 225 degree direction, an approximately 315 degree direction, an approximately 45 degree direction and an approximately 135 degree direction, respectively. The first, second, third and fourth edge portions are all parallel to a vertical direction.

In one embodiment, the opaque portion is substantially triangular.

In one embodiment, an opaque member includes a central opaque portion for selectively shielding at least a portion of a boundary area of each of the first, second, third and fourth liquid crystal domains, which is adjacent to another one of the liquid crystal domains, from incoming light.

In one embodiment, the first substrate further includes a TFT, a gate bus line, a source bus line, a drain extension line, and a storage capacitor line. Either the opaque portion or the central opaque portion is defined by at least a portion of at least one line selected from the group consisting of the gate bus line, the source bus line, the drain extension line, and the storage capacitor line.

In one embodiment, the second substrate further includes a black matrix layer, and either the opaque portion or the central opaque portion is defined by a portion of the black matrix layer.

In one embodiment, the liquid crystal display device further includes two polarizers, which are arranged so as to face

each other with the liquid crystal layer interposed between them and to have their transmission axes crossed at right angles. The first, second, third and fourth directions define an angle of approximately 45 degrees with respect to the transmission axes of the two polarizers.

In one embodiment, the vertical alignment liquid crystal layer includes a liquid crystal material with negative dielectric anisotropy, and the at least one alignment film includes two alignment films that are arranged so as to sandwich the liquid crystal layer between them. The pretilt direction defined by one of the two alignment films is different from that defined by the other alignment film by approximately 90 degrees.

In one embodiment, the at least one alignment film includes two alignment films that are arranged so as to sandwich the liquid crystal layer between them, and respective pretilt angles defined by the two alignment films are substantially equal to each other.

In one embodiment, the at least one alignment film is a photo-alignment film.

EFFECTS OF THE INVENTION

According to the present invention, the display quality of a VA mode liquid crystal display device can be improved in terms of its viewing angle dependence, in particular. Also, according to the present invention, the display quality of a liquid crystal display device having a multi-domain structure defined by an alignment film can be improved.

BRIEF DESCRIPTION OF DRAWINGS

FIG. 1 illustrates an exemplary pixel region with a multi-domain structure in a VA mode liquid crystal display device according to the present invention.

FIGS. 2(a) and 2(b) illustrate exemplary pixel regions with a multi-domain structure in a VA mode liquid crystal display device according to the present invention.

FIGS. 3(a) and 3(b) illustrate other exemplary pixel regions with a multi-domain structure in a VA mode liquid crystal display device according to the present invention.

FIGS. 4(a) and 4(b) illustrate still other exemplary pixel regions with a multi-domain structure in a VA mode liquid crystal display device according to the present invention.

FIGS. 5(a) and 5(b) illustrate yet other exemplary pixel regions with a multi-domain structure in a VA mode liquid crystal display device according to the present invention.

FIG. 6 is a cross-sectional view of a pixel region of a VA mode liquid crystal display device according to the present invention, showing the equipotential curve of an electric field created in the liquid crystal layer, the orientation directions of liquid crystal molecules in the layer, and the transmittance thereof, which were figured out by simulations.

FIG. 7 is a cross-sectional view of a pixel region of a VA mode liquid crystal display device according to the present invention, showing the equipotential curve of an electric field created in the liquid crystal layer, the orientation directions of liquid crystal molecules in the layer, and the transmittance thereof, which were figured out by simulations.

FIG. 8 is a cross-sectional view of a pixel region of a VA mode liquid crystal display device according to the present invention, showing the equipotential curve of an electric field created in the liquid crystal layer, the orientation directions of liquid crystal molecules in the layer, and the transmittance thereof, which were figured out by simulations.

FIG. 9 is a cross-sectional view of a pixel region of a VA mode liquid crystal display device according to the present

invention, showing the equipotential curve of an electric field created in the liquid crystal layer, the orientation directions of liquid crystal molecules in the layer, and the transmittance thereof, which were figured out by simulations.

FIG. 10 is graphs showing the distributions of transmission intensities in a situation where the pixel region shown in FIG. 2(a) is viewed from the direction defined by an azimuth angle of 45 degrees.

FIG. 11 is a schematic representation illustrating an exemplary pixel structure for a liquid crystal display device according to the present invention.

FIG. 12 is a schematic representation illustrating another exemplary pixel structure for a liquid crystal display device according to the present invention.

FIG. 13 is a schematic representation illustrating still another exemplary pixel structure for a liquid crystal display device according to the present invention.

FIG. 14 is a schematic representation illustrating yet another exemplary pixel structure for a liquid crystal display device according to the present invention.

FIG. 15 is a cross-sectional view schematically illustrating the pixel structure shown in FIG. 14.

FIG. 16 is a schematic representation illustrating yet another exemplary pixel structure for a liquid crystal display device according to the present invention.

FIG. 17 is a cross-sectional view schematically illustrating the pixel structure shown in FIG. 16.

FIG. 18 is a schematic representation illustrating yet another exemplary pixel structure for a liquid crystal display device according to the present invention.

FIG. 19 is a schematic representation illustrating yet another exemplary pixel structure for a liquid crystal display device according to the present invention.

FIG. 20 is a schematic representation illustrating yet another exemplary pixel structure for a liquid crystal display device according to the present invention.

FIG. 21 is a schematic representation illustrating yet another exemplary pixel structure for a liquid crystal display device according to the present invention.

FIG. 22 is a schematic representation showing another area in which misalignment occurs in a pixel region with a multi-domain structure in a VA mode liquid crystal display device according to the present invention.

FIG. 23 is a schematic representation illustrating yet another exemplary pixel structure for a liquid crystal display device according to the present invention.

FIG. 24 is a schematic representation illustrating yet another exemplary pixel structure for a liquid crystal display device according to the present invention.

FIG. 25 is a schematic representation illustrating yet another exemplary pixel structure for a liquid crystal display device according to the present invention.

FIGS. 26(a) through 26(c) show how the viewing angle characteristic changes with the central opaque portion in a situation where the photomask has misaligned, wherein: FIG. 26(a) schematically illustrates a pixel with only a vertical opaque portion 21; FIG. 26(b) schematically illustrates a pixel with only a horizontal opaque portion 22; and FIG. 26(c) schematically illustrates a pixel with no central opaque portion at all.

FIGS. 27(a) and 27(b) show how the location of a domain line changes according to the pretilt angle, wherein: FIG. 27(a) schematically illustrates a pixel including a liquid crystal layer with a pretilt angle of 87.5 degrees; and FIG. 27(b) schematically illustrates a pixel including a liquid crystal layer with a pretilt angle of 89.0 degrees.

FIG. 28 is a graph showing how the transmittance (or luminance) changes with the pretilt angle.

FIG. 29 is a graph showing how the contrast ratio changes with the pretilt angle.

DESCRIPTION OF REFERENCE NUMERALS

- 1 TFT substrate
- 1a, 2a transparent substrate
- 2 CF substrate
- 3 liquid crystal layer
- 3a liquid crystal molecule
- 10 pixel region
- 11 pixel electrode
- 12 counter electrode
- 111 pixel electrode
- 111a subpixel electrode
- 111E broadened portion of pixel electrode or subpixel electrode
- 112 gate bus line
- 113 CS bus line (storage capacitor line)
- 113E extended portion of CS bus line
- 114 source bus line
- 116, 116a, 116b TFT
- 117 drain extension line
- 117E extended portion of drain extension line
- SD1 to SD4 edges of pixel electrode
- EG1 to EG4 edge portions of pixel electrode
- A to D liquid crystal domain
- t1 to t4 tilt direction (reference alignment direction)
- e1 to e4 azimuth direction that is perpendicular to edge of pixel electrode and pointed inward in pixel electrode

BEST MODE FOR CARRYING OUT THE INVENTION

Hereinafter, embodiments of a liquid crystal display device according to the present invention will be described with reference to the accompanying drawings. However, the present invention is in no way limited to the following specific embodiments. According to the present invention, a liquid crystal display device, including a vertical alignment liquid crystal layer of which the pretilt direction is controlled by using at least one alignment film, has its display quality improved by providing an opaque film where misalignment occurs.

The display quality is affected to different degrees depending on where misalignment has occurred. That is why the type of misalignment to be hidden behind an opaque portion also changes with the display performance required. In the following description, three types of misalignment to occur in three different locations in a pixel region (namely, an electrode edge portion, a central portion and an intersection portion) will be described separately. These three locations may be shielded independently of each other. Two or more of these locations may be shielded in any arbitrary combination or all of them may be shielded, too.

As used herein, the "vertical alignment liquid crystal layer" means a liquid crystal layer in which the axis of liquid crystal molecules (which will be sometimes referred to herein as an "axis direction") defines a tilt angle of approximately 85 degrees or more with respect to the surface of a vertical alignment film. The liquid crystal molecules have negative dielectric anisotropy and are combined with polarizers that are arranged as crossed Nicols to conduct a display operation in normally black mode. The alignment film may be provided for at least one of the two substrates. However, to stabilize the

alignment, each of the two substrates is preferably provided with an alignment film. In the embodiment to be described below, each of the two substrates is provided with a vertical alignment film. Also, since every misalignment occurs within the multi-domain structure except that occurring in an electrode edge portion, a four-domain structure that realizes a particularly good viewing angle characteristic will be described as an example. As used herein, the "pixel" refers to a minimum unit for representing a particular gray scale level on the screen, and corresponds to a unit for representing each gray scale level of red (R), green (G) and blue (B) in color display and is also called a "dot". A combination of R, G and B pixels forms a single color display pixel. The "pixel region" refers to a region of a liquid crystal display device that is allocated to a single "pixel" on the screen. The "pretilt direction" is the orientation direction of liquid crystal molecules to be controlled with an alignment film and refers to an azimuthal direction on a display screen. Also, the angle formed by the liquid crystal molecules with respect to the surface of the alignment film in this case will be referred to herein as a "pretilt angle". The pretilt direction will be defined by subjecting the alignment film to a rubbing treatment or a photo-alignment treatment. By changing the combinations of the pretilt directions of the two alignment films that face each other with the liquid crystal layer interposed between them, the four-domain structure can be formed. The quadruple pixel region includes four liquid crystal domains (which will be sometimes simply referred to herein as "domains"). Each of these liquid crystal domains is characterized by the tilt direction of liquid crystal molecules at the center of a plane of the liquid crystal layer, to which a voltage is being applied, and at the middle of the thickness of the liquid crystal layer. Such a tilt direction will be sometimes referred to herein as a "reference alignment direction". And this tilt direction (or reference alignment direction) will have an important effect on the viewing angle dependence of each domain. The tilt direction is also an azimuthal direction. The reference azimuthal direction is supposed to be the horizontal direction on the screen and the azimuth angle is supposed to increase counterclockwise. For example, comparing the display screen to a clock face, the three o'clock direction is supposed to have an azimuth angle of zero degrees and the angle is supposed to increase counterclockwise. By defining the tilt directions of the four liquid crystal domains such that an angle formed between any two of the four directions is approximately equal to an integral multiple of 90 degrees (e.g., as the twelve o'clock direction, the nine o'clock direction, the six o'clock direction and the three o'clock direction, respectively), highly uniform viewing angle characteristic and good display quality are realized. To increase the uniformity of the viewing angle characteristic, the areas of those four liquid crystal domains in the pixel region are preferably equalized with each other. Specifically, the difference between the area of the largest one of the four liquid crystal domains and that of the smallest one of the four is preferably no greater than 25% of the largest area.

The vertical alignment liquid crystal layer of the embodiment to be described below includes a nematic liquid crystal material with negative dielectric anisotropy. The pretilt directions defined by the two alignment films that sandwich the liquid crystal layer between them are different from each other by approximately 90 degrees. The tilt angle (i.e., the reference alignment direction) is defined as an intermediate direction between these two pretilt directions. No chiral agent is added to the liquid crystal layer. And when a voltage is applied to the liquid crystal layer, the liquid crystal molecules located near the alignment films will have a twisted alignment

under the anchoring force of the alignment films. If necessary, a chiral agent may be added to the liquid crystal layer. By using such a pair of vertical alignment films defining two pretilt directions (alignment treatment directions) that are perpendicular to each other, the VA mode in which the liquid crystal molecules have a twisted alignment is sometimes called a vertical alignment twisted nematic (VATN) mode (see Patent Document No. 2, for example).

In the VATN mode, the pretilt angles defined by the two alignment films are preferably substantially equal to each other as disclosed by the applicant of the present application in Japanese Patent Application No. 2005-141846. By using such a pair of alignment films defining pretilt angles that are approximately equal to each other, the display luminance can be increased. Particularly when the difference between the pretilt angles defined by the two alignment films is within one degree, the tilt direction (i.e., the reference alignment direction) of liquid crystal molecules, located approximately at the middle of the thickness of the liquid crystal layer, can be controlled with good stability and the display luminance can be increased. This is probably because if the difference between the pretilt angles were more than one degree, then the tilt direction would vary noticeably from one location to another in the liquid crystal layer and the transmittance would vary significantly as a result (i.e., some area would have a lower transmittance than a desired one).

According to known methods, the pretilt direction of liquid crystal molecules may be defined by alignment films by subjecting the alignment films to a rubbing treatment or a photo-alignment treatment, by forming a microstructure on an undercoat film for each alignment film and transferring the pattern of the microstructure onto the surface of the alignment film, or by evaporating obliquely an inorganic material such as SiO on an alignment film to define a microstructure thereon. Considering its mass productivity, either the rubbing treatment or the photo-alignment treatment is preferred. Among other things, the photo-alignment treatment is particularly to increase the yield because that treatment is a non-contact method and generates no static electricity due to friction unlike the rubbing treatment. Also, as described in Japanese Patent Application No. 2005-141846 mentioned above, by using a photo-alignment film including a photosensitive group, the variation in pretilt angle can be reduced to one degree or less. The photo-alignment film preferably includes at least one photosensitive group selected from the group consisting of a 4-chalcone group, a 4'-chalcone group, a coumarin group, and a cinnamoyl group to name a few.

The embodiment to be described below is a TFT LCD as a typical example. However, the present invention is naturally applicable for use in a liquid crystal display device that adopts any other driving method.

(Edge Portion and Central Portion)

First, misalignment that may occur in an electrode edge portion will be described.

The present inventors discovered that when a voltage was applied to a liquid crystal display device including a vertical alignment liquid crystal layer, of which the pretilt direction was controlled using an alignment film, to present a gray scale level thereon, an area, which looked darker than the gray scale level being presented when viewed straight, appeared inside of, and substantially parallel to, an edge portion of a pixel electrode. In the multi-domain structure, if at any of the edges of a pixel electrode, to which a liquid crystal domain is located close, the azimuthal direction that is perpendicular to the edge and that points toward the inside of the pixel electrode defines an angle greater than 90 degrees with respect to the tilt direction (i.e., the reference alignment direction) of the

liquid crystal domain, the area that looks darker than the gray scale level being presented will appear inside of, and substantially parallel to, that edge. The alignment state of the liquid crystal molecules will be disturbed in that area probably because the tilt direction of the liquid crystal domain and the direction in which the anchoring force is produced by an oblique electric field at the edge of the pixel electrode have opposing components.

As used herein, the "gray scale level" refers to any level except black (i.e., the lowest level) and white (i.e., the highest level). The dark area always appears when a non-black gray scale level (including white) is presented as a matter of principle. However, the dark area is easier to perceive at a relatively high gray scale level. Also, unless a particular viewing direction is specified, the display state is always supposed to be a front viewing state (i.e., when the screen is viewed perpendicularly by a viewer located right in front of the screen).

The quadruple pixel region **10** shown in FIG. 1 will be described. FIG. 1 illustrates a pixel region **10** provided for a substantially square pixel electrode for the sake of simplicity. However, the present invention is in no way limited to any particular shape of a pixel region.

The pixel region **10** includes four liquid crystal domains A, B, C and D, of which the tilt directions (i.e. reference alignment directions) are identified by **t1**, **t2**, **t3** and **t4**, respectively. These four tilt directions are defined such that an angle formed between any two of the four directions is approximately equal to an integral multiple of 90 degrees. This is an ideal quadruple structure to achieve the best viewing angle characteristic because the areas of these liquid crystal domains A, B, C and D are equal to each other. The four liquid crystal domains A, B, C and D are arranged in two columns and two rows to define a matrix pattern.

The pixel electrode has four edges (or sides) **SD1**, **SD2**, **SD3** and **SD4**. An oblique electric field to be generated responsive to a voltage applied produces an anchoring force that has a component that is perpendicular to any of these sides and that points toward the inside of the pixel electrode (in an azimuthal direction). In the example shown in FIG. 1, the azimuthal directions that are perpendicular to the four edges **SD1**, **SD2**, **SD3** and **SD4** and that point toward the inside of the pixel electrode are identified by **e1**, **e2**, **e3** and **e4**, respectively.

Each of the four liquid crystal domains is close to two out of the four edges of the pixel electrode. While a voltage is being applied thereto, each liquid crystal domain is subjected to the anchoring forces that have been produced at those edges by the oblique electric field.

In an edge portion **EG1** of one edge of the pixel electrode, to which the liquid crystal domain A is located close, the azimuthal direction **e1** that is perpendicular to the edge portion **EG1** and that points toward the inside of the pixel electrode defines an angle greater than 90 degrees with respect to the tilt direction **t1** of the liquid crystal domain, and misalignment occurs in that area. As a result, when a voltage is applied thereto, the liquid crystal domain A produces an area that looks darker than the other areas (which will be referred to herein as a "domain line **DL1**") parallel to this edge portion **EG1**. It should be noted that in this case, the two polarizers are arranged so as to face each other with the liquid crystal layer interposed between them and to have their transmission axes (polarization axes) crossed at right angles. That is to say, one of the two polarization axes is arranged horizontally and the other vertically. The transmission axes of the polarizers are supposed to be arranged in this manner unless otherwise stated.

In the same way, in an edge portion **EG2** of one edge of the pixel electrode, to which the liquid crystal domain B is located close, the azimuthal direction **e2** that is perpendicular to the edge portion **EG2** and that points toward the inside of the pixel electrode defines an angle greater than 90 degrees with respect to the tilt direction **t2** of the liquid crystal domain, and misalignment occurs in that area. As a result, when a voltage is applied thereto, the liquid crystal domain B may produce an area that looks darker than the other areas (which will be referred to herein as a "domain line **DL2**") parallel to this edge portion **EG2**.

In the same way, in an edge portion **EG3** of one edge of the pixel electrode, to which the liquid crystal domain C is located close, the azimuthal direction **e3** that is perpendicular to the edge portion **EG3** and that points toward the inside of the pixel electrode defines an angle greater than 90 degrees with respect to the tilt direction **t3** of the liquid crystal domain, and misalignment occurs in that area. As a result, when a voltage is applied thereto, the liquid crystal domain C may produce an area that looks darker than the other areas (which will be referred to herein as a "domain line **DL3**") parallel to this edge portion **EG3**.

In the same way, in an edge portion **EG4** of one edge of the pixel electrode, to which the liquid crystal domain D is located close, the azimuthal direction **e4** that is perpendicular to the edge portion **EG4** and that points toward the inside of the pixel electrode defines an angle greater than 90 degrees with respect to the tilt direction **t4** of the liquid crystal domain, and misalignment occurs in that area. As a result, when a voltage is applied thereto, the liquid crystal domain D may produce an area that looks darker than the other areas (which will be referred to herein as a "domain line **DL4**") parallel to this edge portion **EG4**.

If the horizontal direction on a display screen (i.e., the three o'clock direction) has an azimuthal angle of zero degrees, the tilt directions **t1**, **t2**, **t3** and **t4** are an approximately 225 degree direction (liquid crystal domain A), an approximately 315 degree direction (liquid crystal domain B), an approximately 45 degree direction (liquid crystal domain C) and an approximately 135 degree direction (liquid crystal domain D), respectively. The liquid crystal domains A, B, C and D are arranged such that the tilt directions of any two adjacent ones of the liquid crystal domains define an angle of approximately 90 degrees between them. The angle defined by any of the tilt directions **t1**, **t2**, **t3** and **t4** of the liquid crystal domains A, B, C and D with respect to an associated one of the azimuth angle components **e1**, **e2**, **e3** and **e4** of the anchoring forces produced by the oblique electric fields at the nearby edge portions **EG1**, **EG2**, **EG3** and **EG4** is approximately 135 degrees.

The dark areas (i.e., the domain lines **DL1** through **DL4**) that are produced parallel to the edge portions **EG1**, **EG2**, **EG3** and **EG4**, respectively, within the pixel region **10** deteriorate the viewing angle characteristic as will be described later. Thus, by providing opaque portions that can selectively shield at least respective parts of these edge portions **EG1** through **EG4** from incoming light, the deterioration of the viewing angle characteristic can be minimized.

As used herein, "to shield an edge portion from incoming light" means shielding not only the edge portion **EG1**, **EG2**, **EG3** or **EG4** but also its associated dark area (i.e., the domain line **DL1**, **DL2**, **DL3** or **DL4**) produced near the edge portion in the pixel region from incoming light. The location of each domain line (i.e., the distance from its associated edge portion of the pixel electrode) is changeable with the dimensions of the pixel electrode, for example. Typically, however, the opaque portion may be arranged so as to shield a range that reaches approximately 10 μm to 20 μm from any edge portion

of the pixel electrode from incoming light. Also, “an opaque portion for selectively shielding an area from incoming light” means that the opaque portion is provided to shield only that area selectively from incoming light. Nevertheless, there is no need to isolate such an opaque portion for selectively shielding an area from incoming light from the other opaque portions. To minimize the deterioration in viewing angle characteristic, the opaque portions are preferably arranged so as to shield all of the domain lines from incoming light. However, the presence of the opaque portions would decrease the optical efficiency (represented by the effective aperture ratio of a pixel). If an opaque portion that shields at least a part of an edge portion (including a domain line produced around there) from incoming light is provided, then the deterioration in viewing angle characteristic can be lightened at least to that degree. That is why the portions to shield from incoming light may be determined so as to strike an adequate balance between the required performance of the LCD and the optical efficiency to achieve.

Typically, an opaque portion is arranged so as to shield an edge portion and a domain line, which is produced near the edge portion in the pixel region, from incoming light. However, if the pixel aperture ratio should be given a higher priority than the viewing angle characteristic to strike a proper balance between them, only a part or all of the domain line may be shielded from incoming light without shielding the edge portion in order to reduce the area of the opaque portion. In most of the embodiments to be described below, the edge portion and all of the domain line are supposed to be shielded from incoming light. However, in any of those embodiments, the viewing angle characteristic can be improved by providing an opaque portion that selectively shields at least a portion of the domain line.

A method of dividing a pixel region into these four liquid crystal domains A through D (i.e., the arrangement of the liquid crystal domains in the pixel region) is not limited to the example illustrated in FIG. 1. Alternative alignment division methods (or alternative arrangements of liquid crystal domains) will be described with reference to FIGS. 2 through 5.

FIG. 2(a) shows a method of dividing the pixel region 10 shown in FIG. 1. More specifically, the pretilt directions PA1 and PA2 defined by the alignment film of a TFT substrate (i.e., the lower substrate), the pretilt directions PB1 and PB2 defined by the alignment film of a color filter (CF) substrate (i.e., the upper substrate), the tilt directions defined responsive to the application of a voltage to the liquid crystal layer, and areas that look dark due to misalignment (i.e., domain lines DL1 through DL4) are shown in FIG. 2(a). Those areas are not so-called “disclination lines”. These drawings schematically indicate the orientation directions of liquid crystal molecules as viewed by the viewer and show that the liquid crystal molecules are tilted such that the elliptical end of each cylindrical liquid crystal molecule points toward the viewer.

By conducting an alignment treatment so as to achieve the alignment state shown in FIG. 2(a), the pixel region 10 can be defined. Specifically, the alignment treatment is conducted so as to divide the pixel region close to the TFT substrate into two and to define the pretilt directions PAL and PA2 that are antiparallel to the vertical alignment film. In this embodiment, a photo-alignment treatment is carried out by irradiating the liquid crystal layer with an ultraviolet ray obliquely that has come from the direction pointed by the arrows. The alignment treatment is also conducted so as to divide the pixel region close to the CF substrate into two and to define the pretilt directions PB1 and PB2 that are antiparallel to the vertical alignment film. By attaching these substrates

together, a multi-domain structure can be defined in the pixel region 10. In the photo-alignment treatment, the light does not have to come from the directions indicated above. Alternatively, the pixel region on the CF substrate may be irradiated with a light ray that has come from a direction that is tilted with respect to the vertical direction (i.e., the column direction) and the pixel region on the TFT substrate may be irradiated with a light ray that has come from a direction that is tilted with respect to the horizontal direction (i.e., the row direction).

As already described with reference to FIG. 1, the domain lines DL1, DL2, DL3 and DL4 are produced in the liquid crystal domains A, B, C and D parallel to the edge portions EG1, EG2, EG3 and EG4, respectively. The sum of the lengths of these four domain lines DL1 through DL4 will be an approximately half of the overall length of the four edges of the pixel electrode. The edge portions EG1 and EG3 (with the domain lines DL1 and DL3) are parallel to the vertical direction, while the edge portions EG2 and EG4 (with the domain lines DL2 and DL4) are parallel to the horizontal direction.

As shown in FIG. 2(a), a dark line is also observed in the boundary area of each of the liquid crystal domains A through D, which is adjacent to another one of the liquid crystal domains A through D, as indicated by the dashed line CL1. As will be described later, the crossed dark lines formed around the center of the pixel region are not always misalignment and do not have to be shielded on purpose. However, if an opaque member needs to be arranged within the pixel region, the opaque member is preferably arranged to hide these dark lines because the effective aperture ratio of the pixel (i.e., the optical efficiency) can be increased in that case.

Alternatively, by attaching together the TFT and CF substrates that have been subjected to the alignment treatment as shown in FIG. 2(b), a multi-domain structure can be defined for a pixel region 20. This pixel region 20 also includes four liquid crystal domains A, B, C and D. The tilt directions of the liquid crystal domains A through D are the same as those of the liquid crystal domains of the pixel region 10 shown in FIG. 1.

The domain lines DL1, DL2, DL3 and DL4 are produced in the liquid crystal domains A, B, C and D parallel to the edge portions EG1, EG2, EG3 and EG4, respectively. The sum of the lengths of these four domain lines DL1 through DL4 will be an approximately half of the overall length of the four edges of the pixel electrode. The edge portions EG1 and EG3 (with the domain lines DL1 and DL3) are parallel to the horizontal direction, while the edge portions EG2 and EG4 (with the domain lines DL2 and DL4) are parallel to the vertical direction. As shown in FIG. 2(b), a dark line is also observed in the boundary area of each of the liquid crystal domains A through D, which is adjacent to another one of the liquid crystal domains A through D, as indicated by the dashed line CL1. These dark lines are produced in the shape of a cross around the center of the pixel region.

Alternatively, by attaching together the TFT and CF substrates that have been subjected to the alignment treatment as shown in FIG. 3(a), a multi-domain structure can be defined for a pixel region 30. This pixel region 30 also includes four liquid crystal domains A, B, C and D. The tilt directions of the liquid crystal domains A through D are the same as those of the liquid crystal domains of the pixel region 10 shown in FIG. 1.

The tilt directions t1 and t3 of the liquid crystal domains A and C do not point toward any edge portions of the pixel electrode, and therefore, no domain lines are produced in these liquid crystal domains. On the other hand, the tilt direc-

tions **t2** and **t4** of the liquid crystal domains B and D point toward their associated edge portions of the pixel electrode and define an angle greater than 90 degrees with respect to azimuthal directions that are perpendicular to the edge portions and that point toward the inside of the pixel electrode. As a result, domain lines DL**2** and DL**4** are produced. Each of the domain lines DL**2** and DL**4** includes a portion (H) that is parallel to the horizontal direction and a portion (V) that is parallel to the vertical direction. That is to say, each of the tilt directions **t2** and **t4** defines an angle greater than 90 degrees with respect to both an azimuthal direction that is perpendicular to an edge portion of the horizontal edge and that points toward the inside of the pixel electrode and an azimuthal direction that is perpendicular to an edge portion of the vertical edge and that points toward the inside of the pixel electrode. Consequently, domain lines are produced in both of the two directions. As shown in FIG. 3(a), a dark line is also observed in the boundary area of each of the liquid crystal domains A through D, which is adjacent to another one of the liquid crystal domains A through D, as indicated by the dashed line CL**1**. These dark lines are produced in the shape of a cross around the center of the pixel region.

Alternatively, by attaching together the TFT and CF substrates that have been subjected to the alignment treatment as shown in FIG. 3(b), a multi-domain structure can be defined for a pixel region **40**. This pixel region **40** also includes four liquid crystal domains A, B, C and D. The tilt directions of the liquid crystal domains A through D are the same as those of the liquid crystal domains of the pixel region **10** shown in FIG. 1.

The tilt directions **t1** and **t3** of the liquid crystal domains A and C point toward their associated edge portions of the pixel electrode and define an angle greater than 90 degrees with respect to azimuthal directions that are perpendicular to the edge portions and that point toward the inside of the pixel electrode. As a result, domain lines DL**1** and DL**3** are produced. Each of the domain lines DL**1** and DL**3** includes a portion DL**1**(H) or DL**3**(H) that is parallel to the horizontal direction and a portion DL**1**(V) or DL**3**(V) that is parallel to the vertical direction. That is to say, each of the tilt directions **t1** and **t3** defines an angle greater than 90 degrees with respect to both an azimuthal direction that is perpendicular to an edge portion of the horizontal edge and that points toward the inside of the pixel electrode and an azimuthal direction that is perpendicular to an edge portion of the vertical edge and that points toward the inside of the pixel electrode. Consequently, domain lines are produced in both of the two directions. On the other hand, the tilt directions **t2** and **t4** of the liquid crystal domains B and D do not point toward any edge portions of the pixel electrode, and therefore, no domain lines are produced in these liquid crystal domains. As shown in FIG. 3(b), a dark line is also observed in the boundary area of each of the liquid crystal domains A through D, which is adjacent to another one of the liquid crystal domains A through D, as indicated by the dashed line CL**1**. These dark lines are produced in the shape of a cross around the center of the pixel region.

Alternatively, by attaching together the TFT and CF substrates that have been subjected to the alignment treatment as shown in FIG. 4(a), a multi-domain structure can be defined for a pixel region **50**. This pixel region **50** also includes four liquid crystal domains A, B, C and D. The tilt directions of the liquid crystal domains A through D are the same as those of the liquid crystal domains of the pixel region **10** shown in FIG. 1.

The tilt directions **t1**, **t2**, **t3** and **t4** of all of these liquid crystal domains A, B, C and D point toward their associated edge portions of the pixel electrode and define an angle

greater than 90 degrees with respect to azimuthal directions that are perpendicular to the edge portions and that point toward the inside of the pixel electrode. As a result, domain lines DL**1**, DL**2**, DL**3** and DL**4** are produced. Each of the domain lines DL**1** through DL**4** includes a portion DL**1**(H), DL**2**(H), DL**3**(H) or DL**4**(H) that is parallel to the horizontal direction and a portion DL**1**(V), DL**2**(V), DL**3**(V) or DL**4**(V) that is parallel to the vertical direction. That is to say, each of the tilt directions **t1** through **t4** defines an angle greater than 90 degrees with respect to both an azimuthal direction that is perpendicular to an edge portion of the horizontal edge and that points toward the inside of the pixel electrode and an azimuthal direction that is perpendicular to an edge portion of the vertical edge and that points toward the inside of the pixel electrode. Consequently, domain lines are produced in both of the two directions. As shown in FIG. 4(a), a dark line is also observed in the boundary area of each of the liquid crystal domains A through D, which is adjacent to another one of the liquid crystal domains A through D, as indicated by the dashed line CL**1**. These dark lines are produced in the shape of a cross around the center of the pixel region.

Alternatively, by attaching together the TFT and CF substrates that have been subjected to the alignment treatment as shown in FIG. 4(b), a multi-domain structure can be defined for a pixel region **60**. This pixel region **60** also includes four liquid crystal domains A, B, C and D. The tilt directions of the liquid crystal domains A through D are the same as those of the liquid crystal domains of the pixel region **10** shown in FIG. 1.

None of the tilt directions **t1**, **t2**, **t3** and **t4** of the liquid crystal domains A through D point toward any edge portions of the pixel electrode, and therefore, no domain lines are produced at all in these liquid crystal domains. A dark line is also observed in the boundary area of each of the liquid crystal domains A through D, which is adjacent to another one of the liquid crystal domains A through D, as indicated by the dashed line CL**1**. These dark lines are produced in the shape of a cross around the center of the pixel region.

In each of the four-domain structures described above, four liquid crystal domains are arranged in two columns and two rows to define a matrix pattern. However, the present invention is in no way limited to that specific embodiment. Alternatively, the four liquid crystal domains may be arranged in line in a predetermined direction as shown in FIGS. 5(a) and 5(b), in which the liquid crystal domains are arranged in line in the column direction.

The pixel region **70** shown in FIG. 5(a) also includes four liquid crystal domains A, B, C and D. The tilt directions of the liquid crystal domains A through D are the same as those of the liquid crystal domains of the pixel region **10** shown in FIG. 1. The tilt directions **t1**, **t2**, **t3** and **t4** of all of these liquid crystal domains A, B, C and D point toward their associated edge portions of the pixel electrode and define an angle greater than 90 degrees with respect to azimuthal directions that are perpendicular to the edge portions and that point toward the inside of the pixel electrode. As a result, domain lines DL**1**, DL**2**, DL**3** and DL**4** are produced. All of these domain lines DL**1** through DL**4** are parallel to the vertical direction (i.e., the direction in which the liquid crystal domains are arranged). A dark line is also observed in the boundary area of each of the liquid crystal domains A through D, which is adjacent to another one of the liquid crystal domains A through D. These dark lines are produced horizontally (i.e., perpendicularly to the direction in which the liquid crystal domains are arranged) around the center of the pixel region.

On the other hand, in the pixel region **80** shown in FIG. **5(b)**, the tilt directions of the four liquid crystal domains A', B', C' and D' are 90 degrees, 180 degrees, 0 degrees and 270 degrees, respectively, as shown in that drawing. The domain lines DL1' and DL4' of the liquid crystal domains A' and D' are parallel to the horizontal direction. And the domain lines DL2' and DL3' are parallel to the vertical direction. A dark line is also observed in the boundary area of each of the liquid crystal domains A' through D', which is adjacent to another one of the liquid crystal domains A' through D'. These dark lines are produced horizontally (i.e., perpendicularly to the direction in which the liquid crystal domains are arranged) around the center of the pixel region. If the tilt directions are defined in this manner, the polarizers are preferably arranged such that their transmission axes define angles of ± 45 degrees with respect to the horizontal direction.

Next, it will be described with reference to FIGS. **6** through **9** how domain lines are produced near the edge portions of a pixel electrode and how dark lines are produced (in the shape of a cross as shown in FIG. **2**, for example) around the center of the pixel region. FIGS. **6** through **9** are cross sectional views of a pixel region of a liquid crystal display device, showing the equipotential curve of an electric field created in the liquid crystal layer **3**, the orientation directions of liquid crystal molecules **3a** in the layer, and the relative (front) transmittance thereof, which were figured out by simulations.

This liquid crystal display device includes a TFT substrate **1** including a transparent substrate (e.g., a glass substrate) **1a** and a pixel electrode **11** on the transparent substrate **1a**, a CF substrate **2** including a transparent substrate (e.g., a glass substrate) **2a** and a counter electrode **12** on the transparent substrate **2a**, and a vertical alignment liquid crystal layer **3** interposed between the TFT and CF substrates **1** and **2**. A vertical alignment film (not shown) is provided on each of the TFT and CF substrates **1** and **2** so as to contact with the liquid crystal layer **3**. The liquid crystal layer is subjected to an alignment treatment so as to have the pretilt directions controlled as indicated by the arrows, arrowheads and arrow tails in FIGS. **6** to **9**.

First, referring to FIG. **6**, illustrated is a cross sectional view of the left half of the pixel region **20** shown in FIG. **2(b)**, including an edge portion of the liquid crystal domain D with the domain line DL4, as viewed on a plane defined by an azimuth angle of zero degrees. It can be seen that at an edge portion of the pixel electrode **11** shown in FIG. **6**, liquid crystal molecules **3a** (with a tilt angle of 135 degrees), located around the center of a plane of the liquid crystal domain and approximately at the middle of the thickness thereof, are gradually twisted toward the edge portion of the pixel electrode under the anchoring force (defined by an azimuthal direction of zero degrees) of an oblique electric field generated in the edge portion of the pixel electrode **11**. In this example, the twist angle is 135 degrees, which is greater than 90 degrees. That is why due to a variation in retardation in this twisting region of the liquid crystal layer, the relative transmittance varies in a complicated manner as shown in FIG. **6**, thereby producing a domain line in which the relative transmittance becomes local minimum within the pixel region (i.e., inside of the edge of the pixel electrode). That region with the local minimum transmittance as indicated by the dotted square in FIG. **6** corresponds to the domain line DL4 in the liquid crystal domain D shown in FIG. **2(b)**.

On the other hand, in another edge portion of the pixel electrode in which no domain line is produced as shown in FIG. **7**, the twist angle of the liquid crystal molecules (i.e., the difference in tilt direction between the liquid crystal molecules located around the center of the liquid crystal domain

and the liquid crystal molecules, of which the alignment is controlled by an oblique electric field that has been generated in the edge portion of the pixel electrode **11**) is 90 degrees or less. And the relative transmittance decreases monotonically from the central portion of the pixel region toward the end thereof and reaches its local minimum outside of the pixel region (i.e., at the left end of FIG. **7**), not inside of the pixel region. FIG. **7** is a cross-sectional view of the lower half of the pixel region **20** shown in FIG. **2(b)**, including another edge portion of the liquid crystal domain D without the domain line DL4, as viewed on a plane defined by an azimuth angle of 90 degrees.

Meanwhile, as shown in FIGS. **8** and **9**, the liquid crystal molecules also have a twist angle of 90 degrees or less in the boundary area in which two liquid crystal domains are adjacent to each other within the pixel region. Thus, the relative transmittance also changes simply and reaches a local minimum value there. FIG. **8** is a cross-sectional view of the liquid crystal domains D and A shown in FIG. **2(b)**, including the boundary area between them, as viewed on a plane defined by an azimuth angle of zero degrees. FIG. **9** is a cross-sectional view of the liquid crystal domains B and A shown in FIG. **4(b)**, including the boundary area between them, as viewed on a plane defined by an azimuth angle of zero degrees.

FIG. **10** shows the distributions of transmission intensities in a situation where the pixel region **10** is viewed from the direction defined by an azimuth angle of 45 degrees. The four graphs of FIG. **10** show the distributions of transmission intensities on the four planes I, II, III and IV, respectively. Also, each of these graphs shows results in three viewing directions defined by polar angles of zero degrees (i.e., front direction), 45 degrees and 60 degrees, respectively.

It can be seen that in the domain lines appearing at the left end of Graph I, at the right end of Graph II, at the right end of Graph III, and at the left end of Graph IV, the behavior of the transmission intensity changes significantly according to the polar angle (particularly in Graph III). That is to say, the location with the minimum transmission intensity changes with the polar angle. For example, the transmission intensity in the front viewing direction (defined by a polar angle of zero degrees) is local minimum, whereas the transmission intensities at the polar angles of 45 and 60 degrees are local maximum. If the transmission intensity changes according to the polar angle in this manner, the viewing angle characteristic deteriorates. Among other things, the viewing angle dependence of γ characteristic deteriorates significantly to cause a phenomenon called "whitening".

By providing opaque portions that can selectively shield at least respective portions of the domain lines, produced in the edge portions of the pixel electrode, from incoming light, such deterioration in viewing angle characteristic can be reduced. Also, those domain lines are produced in the edge portions when the tilt directions of the liquid crystal molecules around the center of the liquid crystal layer are defined as described above with respect to the edges of the electrode. That is why the domain lines may also be produced in a normal pixel region with no multi-domain structures. For that reason, to minimize the deterioration in viewing angle characteristic due to the production of domain lines in the edge portions of the pixel electrode, such opaque portions for selectively shielding at least respective portions of the domain lines are preferably provided, no matter whether the multi-domain structure should be formed or not.

The dark lines formed around the center of the pixel region (e.g., crossed lines CL1) are not always misalignment and do not have to be shielded on purpose. However, if an opaque member needs to be arranged within the pixel region, the

opaque member is preferably arranged to hide these dark lines because the effective aperture ratio of the pixel (i.e., the optical efficiency) can be increased in that case.

Hereinafter, embodiments of opaque portions will be described specifically. Each of the opaque portions to be described below may be used either by itself or in combination with any other opaque portion.

A TFT LCD usually includes an opaque member. For example, a TFT substrate includes a gate bus line, a source bus line, a drain extension line and a storage capacitor line (which will be referred to herein as a "CS bus line"). Also, a CF substrate includes a black matrix to shield the surrounding areas of color filters that are arranged so as to overlap with pixel regions. The opaque portions for selectively shielding at least portions of the domain lines may be defined by using these opaque members. Furthermore, to minimize the decrease in optical efficiency caused by the opaque member arranged within the pixel region, the opaque member is preferably arranged so as to hide the dark area produced between adjacent liquid crystal domains.

Hereinafter, an exemplary pixel structure for a liquid crystal display device according to the present invention will be described. In the drawings, any pair of components shown in multiple drawings and having substantially the same function is identified by the same reference numeral. And once a component has been described, the description of its counterpart will be omitted herein to avoid redundancies. Also, in a number of pixels that are arranged in columns and rows so as to form a matrix pattern, the structure of a pixel located at an intersection between an m^{th} row and an n^{th} column will be described. It should be noted that a row corresponds to an arrangement of pixels along a gate bus line (or scan line), while a column corresponds to an arrangement of pixels along a source bus line (or signal line). Typically, rows are defined in the horizontal direction on the display screen, while columns in the vertical direction on the display screen.

The opaque portions may be defined by using at least portions of the source bus line **114**, the CS bus line **113**, the drain extension line **117** and the gate bus line **112** as shown in FIG. **11**, for example. In the following description, an m^{th} gate bus line **112** will be referred to herein as a "gate bus line **112(m)**" and an n^{th} source bus line **114** will be referred to herein as a "gate bus line **114(n)**".

The pixel region shown in FIG. **11** illustrates a subpixel with the multipixel structure disclosed in Japanese Patent Application Laid-Open Publication No. 2004-62146. The following description will be focused on the structure of the upper one of the two subpixel regions that has the subpixel electrode **111a**.

The sub-pixel electrode **111a** is connected to the drain electrode **116D** of the TFT **116** and is arranged so as to partially overlap with the source bus line **114**, the gate bus line **112** and the CS bus line **113** with an interlayer dielectric film (not shown) of resin interposed between them. Also, at the center of the sub-pixel electrode **111a**, a storage capacitor CS is formed by an extended portion **117E** of the drain extension line **117**, an extended portion **113E** of the CS bus line **113** and an insulating layer (e.g., a gate insulating layer) between them.

The multipixel structure shown in FIG. **11** has the following features.

The conventional pixel electrode is divided into two subpixel electrodes, which are connected to the same source bus line **114** by way of their associated TFTs **116a** and **116b** (i.e., two TFTs in total). The ON and OFF states of the two TFTs **116a** and **116b** are controlled through the common gate bus line **112**. The two TFTs **116a** and **116b** share a semiconductor

layer **116m**, a source electrode **116S**, and a gate electrode (gate bus line **112**) in common. And the respective drain electrodes **116D** of the two TFTs are electrically connected to their associated subpixel electrodes. The drain electrode **116D** of the TFT **116a** and the subpixel electrode **111a** are electrically connected together by connecting the drain extension line **117**, extending from the drain electrode **116D**, to the subpixel electrode **111a** in a contact hole **119** that has been cut through an interlayer dielectric film (which is not shown in FIG. **11** but is identified by the reference numeral **118a** in FIG. **15**).

Each subpixel electrode (which is the upper subpixel electrode **111a** in FIG. **11** with the lower subpixel electrode not shown there), the liquid crystal layer, and a counter electrode (common electrode) that faces these electrodes with the liquid crystal layer interposed between them form a liquid crystal capacitor. Storage capacitors CS are formed electrically in parallel with the liquid crystal capacitors associated with the respective subpixel regions. As for the upper subpixel, one of the two electrodes that form the storage capacitor (i.e., the storage capacitor electrode) is defined by the extended portion **117E** of the drain extension line **117** that is connected to the drain **116D** of the same TFT **116a** as the subpixel electrode **111a**, while the other electrode (i.e., the storage capacitor counter electrode) is defined by the extended portion **113E** of the CS bus line **113** provided for the upper subpixel. Likewise, as for the lower subpixel, one of the two electrodes that form the storage capacitor (i.e., the storage capacitor electrode) is defined by the extended portion (not shown) of the drain extension line (not shown) that is connected to the drain (not shown) of the same TFT **116b** as the lower subpixel electrode (not shown), while the other electrode (i.e., the storage capacitor counter electrode) is defined by the extended portion (not shown) of the CS bus line (not shown) provided for the lower subpixel.

The CS bus lines **113** are provided electrically independently of each other for the two subpixels. For example, if the storage capacitor counter voltage supplied to the storage capacitor belonging to one subpixel through the CS bus line **113** rises after the TFT **116a** has been turned OFF, the storage capacitor counter voltage supplied to the storage capacitor belonging to the other subpixel through the CS bus line **113** falls after the TFT **116b** has been turned OFF. If (the magnitudes and/or the directions of) the storage capacitor counter voltages of the storage capacitors belonging to the respective subpixels are changed differently after their associated TFTs have been turned OFF, different effective voltages will be applied to the respective liquid crystal layers of the two subpixels. As a result, the two subpixels can present two different luminances (one of which is relatively high and the other of which is relatively low) with respect to the display signal voltage supplied through the source bus line **114**. Consequently, the viewing angle dependence of the γ characteristic can be reduced.

The sub-pixel region shown in FIG. **11** has a multi-domain structure similar to that of the pixel region **10** described above. That is to say, domain lines are produced near the edge portions **EG1**, **EG2**, **EG3** and **EG4** of the sub-pixel electrode and crossed dark lines are produced at the center of the sub-pixel region.

The opaque portions for selectively shielding at least portions of the domain lines produced near the edge portions **EG1** and **EG3** may be formed by bending the source bus line **114** in a direction that crosses its length direction (the vertical direction), i.e., toward the sub-pixel electrode. Optionally, the opaque portions may also be formed by locally increasing the width of the source bus line **114**. However, the opaque por-

tions are preferably formed by bending the source bus line because the stray capacitance might increase if the source bus line had an increased width.

The domain line produced in the edge portion EG2 may be shielded by increasing the width of overlap between the edge portion of the sub-pixel electrode **111a** and the gate bus line **112**. The overlap width may be increased either by partially increasing the width of the sub-pixel electrode **111a** or the gate bus line **112** (e.g., by providing the broadened portion **111E** of the subpixel electrode **111a** shown in FIG. 11) or by bending the gate bus line **112** in a direction that crosses its length direction (i.e., the horizontal direction).

The domain line produced in the edge portion EG4 may be shielded by increasing the width of overlap between the edge portion of the sub-pixel electrode **111a** and the CS bus line **113**. The overlap width may be increased either by partially increasing the width of the sub-pixel electrode **111a** or the CS bus line **113** (e.g., by providing the broadened portion **113A** of the CS bus line **113** shown in FIG. 11) or by bending the CS bus line **113** in a direction that crosses its length direction (i.e., the horizontal direction).

The opaque portions for selectively shielding at least portions of the dark areas produced in the boundary areas between the liquid crystal domains may be formed by respective extended portions **113e** and **113E** of the CS bus line **13** and the drain extension line **117** and its extended portion **117E**. By using the storage capacitor CS in the pixel as an opaque portion in this manner, the extra decrease in optical efficiency can be minimized.

Alternatively, the CS bus line **13** may have not only the extended portions **113e** and **113E** for shielding the crossed dark lines at the center of the pixel region but also additional extended portions **113E1** and **113E2** for shielding the domain lines produced in the edge portions EG1 and EG2, respectively, as shown in FIG. 12.

If a multi-domain structure similar to that of the pixel region **30** shown in FIG. 3(a) is formed for the sub-pixel region, then the arrangement shown in FIG. 13 may be adopted, for example.

Specifically, the domain line (DL4(H) shown in FIG. 3(a)) produced in the horizontal part of the edge portion EG4 may be shielded by increasing the width of overlap between the CS bus line **13** and the sub-pixel electrode **111a**. The width of overlap can be increased by partially increasing the width of the sub-pixel electrode **111a** such that an extended portion **111E1** is formed. On the other hand, the domain line (DL2(H) shown in FIG. 3(a)) produced in the horizontal part of the edge portion EG2 may be shielded by increasing the width of overlap between the gate bus line **112** and the sub-pixel electrode **111a**. The width of overlap can be increased by partially increasing the width of the sub-pixel electrode **111a** such that an extended portion **111E2** is formed. The vertical parts of the edge portions EG2 and EG4 (DL2(V) and DL4(V) shown in FIG. 3(a)) may be shielded by the bent portions of the source bus line **114** as in the example described above.

If a multi-domain structure similar to that of the pixel region **10** is adopted, the opaque portions for shielding the dark areas produced in the boundary areas between the liquid crystal domains may be defined by the extended portions **117E** and **117E'** of the drain extension line **117** as shown in FIG. 14. The extended portion **117E** faces the CS bus line **113** to form a storage capacitor.

FIG. 15 is a cross-sectional view of the structure shown in FIG. 14 as viewed on the plane **15A-15A'** shown in FIG. 14. As shown in FIG. 15, the drain extension line **117** and the gate bus line **112** interpose a gate insulating film **115** between them. Thus, leakage is less likely to be produced between the

drain extension line **117** and the gate bus line **112** because these belong to two separate layers. A normal pixel with no multipixel structure is illustrated in FIG. 14. When this arrangement is applied to a multipixel structure, even if a CS bus line is arranged in place of the gate bus line **112** in the upper part of FIG. 14, the opaque portion may also be formed to hide the central cross lines by the extended portions **117E** and **117E'** of the drain extension line **117** as shown in FIG. 14, too. The CS bus line **113** is made of the same conductive layer (which is typically a metal layer) as the gate bus line **112**. That is why leakage is less likely to be produced between the drain extension line **117** and the CS bus line **113**. That is to say, the vertical part of the opaque portion to form the cross and the horizontal part of the opaque portion to shield the horizontal edge portion are preferably made of two different layers. By adopting such an arrangement, the leakage failures can be reduced compared to the configuration disclosed in FIG. 60 of Patent Document No. 1.

In the pixel structure shown in FIG. 15, a relatively thick interlayer dielectric film **118a** of a photosensitive resin, for example, is interposed between the pixel electrode **111** and the source bus line **114**. That is why even if the pixel electrode **111** (or the subpixel electrode **111a**) and the source bus line **114** (and the gate bus line **112**) are stacked one upon the other as shown in FIG. 14, the capacitance produced between the pixel electrode **111** and the source bus line **114** can be reduced sufficiently. Consequently, the voltage at the pixel electrode **111** never varies due to the voltage (i.e., signal voltage) on the source bus line **114** by way of the capacitance. That is to say, by adopting the pixel structure shown in FIG. 15 in which the pixel electrode **111** and the source bus line **114** are stacked one upon the other, the aperture ratio of the pixel can be increased.

Alternatively, the domain lines produced in the edge portions and the crossed dark lines produced around the center of the pixel region may be shielded by the extended portion **113e** of the CS bus line **113** as shown in FIGS. 16 and 17. In the arrangement illustrated in FIGS. 16 and 17, a relatively thin interlayer dielectric film **118b** of an inorganic material such as SiN_x, for example, is provided between the pixel electrode **111** and the source bus line **114**. In this arrangement, to prevent the voltage at the pixel electrode **111** from being affected by the voltage (i.e., signal voltage) on the source bus line **114**, the pixel electrode **111** and the bus lines are arranged so as not to overlap each other. This arrangement does not contribute to increasing the aperture ratio of a pixel but can simply the manufacturing process because a relatively thin inorganic insulating film can be used as the interlayer dielectric film **118b**.

As another alternative, the domain lines produced in the edge portions and the crossed dark lines produced around the center of the pixel region may also be shielded by extending the drain extension line **117** as shown in FIG. 18. Since the drain extension line **117** belongs to a different layer from that of the gate bus line **112** and the CS bus line **113** as described above, leakage failures are less likely to occur between them. A sub-pixel region with a multipixel structure is illustrated in FIG. 18. However, this structure is equally applicable for use in a normal pixel region, too.

In each of the examples described above, the opaque portions are defined by using the opaque members arranged on the TFT substrate. If necessary, however, part or all of the opaque portions may be located on the CF substrate. For example, opaque portions with relatively broad widths (e.g., the opaque portions for shielding the domain lines produced in the edge portions parallel to the vertical direction and the opaque portion for shielding the crossed dark lines produced

around the center of the pixel region) may be defined by the black matrix layer 132 on the CF substrate as shown in FIG. 19. In this example, the horizontally extending portion of the crossed dark lines around the center of the pixel is supposed to be shielded entirely by the extended portion 132E of the black matrix layer 132. Alternatively, part of that portion may be shielded by the black matrix layer 132 and the other part may be shielded by the drain extension line 117. Still alternatively, any of the shielding structures and this arrangement may be combined appropriately.

Optionally, as shown in FIGS. 20 and 21, the crossed dark lines around the center may be shielded by the drain extension line 117 and the domain lines in the edge portions may be shielded by the extended portion 113E1 of the CS bus line 113 and the extended portion 112E of the gate bus line 112. As for the pixel region shown in FIGS. 20 and 21, only one subpixel of the multipixel structure disclosed in Japanese Patent Application Laid-Open Publication No. 2004-62146 is shown. However, this arrangement can be equally applied to a normal pixel region, too. Also, in the subpixel region shown in FIGS. 20 and 21, the four liquid crystal domains shown in FIG. 3(a) are produced.

In the subpixel region shown in FIGS. 20 and 21, there is a drain extension line 117 that is connected to the drain 116D of the TFT 116a, thereby shielding the crossed dark lines around the center of the subpixel region. A gate bus line extended portion 112E is also provided so as to branch from the gate bus line 112 and to include a part that faces the drain extension line 117 connected to the TFT 116 with an insulating layer (which is typically a gate insulating film) interposed between them. That part of the extended portion 112E of the gate bus line 112 that faces the drain extension line 117 produces a capacitor 124a. This capacitor 124a is a component of the gate-drain capacitance Cgd of the TFT in the subpixel region, and will be referred to herein as a "Cgd compensating capacitor 124a".

In the example shown in FIG. 20, the lower end portion of the drain extension line 117 overlaps with the extended portion 112E of the gate bus line 112. That is why if the drain extension line 117 has misaligned vertically, the Cgd compensating capacitor 124a will have its capacitance value varied. In a portion of the TFT 116 where a Cgd parasitic capacitor 122a is formed, the lower end portion of the drain extension line 117 (i.e., the drain electrode 116D) overlaps with the gate electrode (i.e., a portion of the gate bus line 112 in this example). That is why if the drain extension line 117 (drain electrode 116D) has misaligned vertically, the Cgd parasitic capacitor 122a will have its capacitance value varied.

On the other hand, in the example shown in FIG. 21, the right end portion of the drain extension line 117 overlaps with the extended portion 112E of the gate bus line 112. That is why if the drain extension line 117 has misaligned horizontally, the Cgd compensating capacitor 124a will have its capacitance value varied. In a portion of the TFT 116 where a Cgd parasitic capacitor 122a is formed, the left end portion of the drain extension line 117 (i.e., the drain electrode 116D) overlaps with the gate electrode 116G (i.e., a portion branching from the gate bus line 116 in this example). That is why if the drain extension line 117 (drain electrode 116D) has misaligned horizontally, the Cgd parasitic capacitor 122a will have its capacitance value varied. The right end portion of the drain extension line 117 that forms the Cgd compensating capacitor 124a and the left end portion of the drain extension line 117 that forms the Cgd parasitic capacitor 122a are located on opposite sides horizontally. That is why if the drain extension line 117 (drain electrode 116D) has misaligned

horizontally, one of the Cgd compensating capacitor 122a and the Cgd parasitic capacitor 124a increases its capacitance value but the other capacitor decreases its capacitance value. For that reason, if the drain extension line 117 has substantially equal widths at the right and left ends thereof, the sum of the Cgd capacitances (=the Cgd parasitic capacitance of the TFT portion+the Cgd compensating capacitance) can be kept constant even when the drain extension line 117 misaligns horizontally.

In the subpixel region shown in FIGS. 20 and 21, the four liquid crystal domains shown in FIG. 3(a) are produced. That is why as in the arrangement shown in FIG. 13, opaque portions for selectively shielding the domain lines DL2 (including DL2(H) and DL2(V)) and the domain lines DL4 (including DL4(H) and DL4(V)) are preferably formed. In addition, a central opaque portion for selectively shielding the boundary regions (i.e., CL1 in FIG. 3(a)) where each of the four liquid crystal domains is adjacent to another one is also preferably provided.

In this example, the extended portion 112E of the gate bus line 112 provided in the subpixel region forms at least a part of the opaque portion for shielding DL2(V) shown in FIG. 3(a). Also, at least a part of the opaque portion for shielding DL4(V) in the subpixel region shown in FIG. 3(a) is defined by the extended portion 113E1 of the CS bus line 113. On the other hand, the domain line DL4(H) shown in FIG. 3(a) is shielded by increasing the width of the overlapping portion between the CS bus line 113 and the subpixel electrode 111a with the extended portion 111E1 defined by partially increasing the width of the subpixel electrode 111a (upward in this example). In addition, the extended portion 117E of the drain extension line 117 is provided in a region including the extended portion 111E1 of the subpixel electrode 111a, thereby forming a storage capacitor CS and contributing to shielding the edge portion EG4. Meanwhile, DL2(H) shown in FIG. 3(a) is shielded by increasing the width of the overlapping portion between the gate bus line 112 and the subpixel electrode 111a with the extended portion 111E2 formed by partially increasing the width of the subpixel electrode 111a (e.g., downward in this example).

Also, in the LCD manufacturing process of the embodiment described above, at least the substrate with the opaque portions is preferably irradiated with light (typically an ultraviolet ray) for the purpose of photo-alignment treatment. The opaque portions described above are provided in areas where misalignment may arise in the multi-domain structure. That is why if the opaque portions were provided for the other substrate to face the substrate that has been irradiated with light to define the multi-domain structure, then an alignment error should be considered when those substrates are attached together and the size of the opaque portions should be increased excessively, which is not beneficial. Also, the substrate is preferably irradiated with light that has come from a direction in which the light is not affected by the unevenness on the surface of the substrate. For example, if the CF substrate is irradiated with light, the light preferably comes from the column direction. Then, no shadow areas would be produced by the black matrix that is arranged between the rows. (Intersection)

The present inventors discovered that at the intersections OD between the domain lines produced in the edge portions and the boundary areas between adjacent liquid crystal domains, the liquid crystal molecules had particularly inconsistent orientations and noticeably low response speeds as shown in FIG. 22. For that reason, in an application that pays much attention to moving picture display performance, those

areas surrounding the intersections OD where the liquid crystal molecules have inconsistent orientations are preferably shielded.

Those intersections OD are preferably shielded by providing extensions TR1, TR2, TR3 and TR4 that protrude out of the opaque portions for shielding the domain lines produced in the edge portions and the opaque portions for shielding the boundary area between adjacent liquid crystal domains as shown in FIG. 23. Specifically, the extensions TR1 and TR3 are extended from the CS bus line extended portion 113E, the extension TR2 is extended from the gate bus line 112, and the extension TR4 is extended from the CS bus line 113. If necessary, it is naturally possible to shield only the intersections OD selectively. The extensions TR1 through TR4 shown in FIG. 22 have an almost triangular shape. However, the extensions may have any other shape as long as the optical efficiency (or aperture ratio) does not decrease unnecessarily. In view of this consideration, the extensions preferably have such a triangular shape as shown in FIG. 21.

(Partial Shielding)

The liquid crystal display device of the embodiment described above includes opaque portions for shielding edge portions with domain lines substantially entirely. However, the present invention is in no way limited to that specific embodiment. To minimize the deterioration in viewing angle characteristic, the opaque portions are preferably arranged so as to shield the domain lines from incoming light entirely as described above. If the opaque portions were present, however, the optical efficiency (i.e., the effective aperture ratio of a pixel) would decrease. That is why the edge portions may be shielded partially to strike an adequate balance between the viewing angle characteristic and the optical efficiency.

Particularly if an arrangement in which the pixel electrode does not overlap with the source bus line as viewed perpendicularly to the substrate (see the cross-sectional view shown in FIG. 17, for example) is adopted, the pixel aperture ratio decreases. For that reason, to avoid a significant decrease in pixel aperture ratio, the opaque areas are preferably as small as possible. If a relatively thick interlayer dielectric film 118a of a photosensitive resin, for example, is interposed between the pixel electrode 111 and the source bus line 114 as shown in FIG. 15, the capacitance produced between the pixel electrode 111 (or the subpixel electrode 111a) and the source bus line 114 (and the gate bus line 112) can be reduced sufficiently even when the pixel electrode 111 (or the subpixel electrode 111a) overlaps with the source bus line 114 (and the gate bus line 112) as shown in FIGS. 14, 18, 19 and 21. That is why the voltage at the pixel electrode 111 (or the subpixel electrode 111a) is not affected by the voltage (i.e., signal voltage) on the source bus line 114 by way of this capacitance. Consequently, by overlapping the pixel electrode 111 (or the subpixel electrode 111a) and the source bus line 114 (and the gate bus line 112) each other, the pixel aperture ratio can be increased.

On the other hand, if an arrangement in which the pixel electrode 111 does not overlap with the source bus line 114 (and the gate bus line 112) is adopted as shown in the cross-sectional view of FIG. 17, then a relatively thin inorganic insulating film of SiN_x, for example, may be used as the interlayer dielectric film 118b. As a result, the manufacturing process can be simplified, which is advantageous. However, if such an arrangement in which the pixel electrode 111 does not overlap with the source bus line 114 is adopted, the pixel aperture ratio will decrease. For that reason, to achieve a sufficient display luminance, the opaque portions are preferably as small as possible.

Hereinafter, exemplary arrangements for shielding only portions of the domain lines produced in the vicinity of the

edge portions of a pixel electrode and only portions of the crossed dark lines produced around the center of a pixel region will be described with reference to FIGS. 24 and 25, which show the upper subpixel region of a pixel with a multipixel structure. The multi-domain structure of the upper subpixel region is the same as the four-domain structure shown in FIG. 1.

In the example illustrated in FIG. 24, all of the domain lines DL1 and DL4 shown in FIG. 2(a), part of the domain line DL3, and the vertical one of the central dark lines CL1 are shielded, but the domain line DL2 and the horizontal one of the central dark lines CL1 are not shielded. In the following description, the vertical one of the central crossed dark lines will be identified herein by CL1 while the horizontal dark line by CL2 as shown in FIG. 26.

The lower half of the opaque portion for selectively shielding CL1 is defined by the drain extension line 117 and the upper half thereof is defined by the extended portion 113A3 of the CS bus line 113. The other opaque portions are defined by the extended portions 113A1, 113A2 and 113A4 of the CS bus line 113. Specifically, the extended portion 113A1 of the CS bus line 113 is a broadened portion of the CS bus line 113 and the edge portion EG4 is shielded by increasing the width of the overlapping portion with the subpixel electrode 111a. The extended portion 113A2 of the CS bus line 113 shields the edge portion EG1 and the extended portion 113A4 of the CS bus line 113 shields approximately a half of the edge portion EG3. The extended portion 113A4 is extended from the CS bus line 113 by way of another extended portion 113A4'. In the edge portion where the extended portion 113A4' is arranged, no domain line has been produced. That is why the extended portion 113A4' has a narrow width.

It should be noted that the extended portion 113A3 of the CS bus line 113 and the drain extension line 117 overlap each other at their ends with an insulating film (such as a gate insulating film) interposed between them, thus forming a storage capacitor CS. Where this storage capacitor CS is formed, there is a contact hole (not shown) and the subpixel electrode 111a is connected to the drain extension line 117. Likewise, parts of the extended portions 113A1, 113A2, 113A4' and 113A4 of the CS bus line 113 that overlap with the subpixel electrode 111a also function as parts of the storage capacitor.

The example shown in FIG. 25 is different from the example shown in FIG. 24 in that the CS bus line 113 includes another extended portion 113A5 for further shielding the horizontal one CL2 of the central dark lines. The extended portion 113A5 of the CS bus line 113 has been formed so as to connect the extended portions 113A3 and 113A4 together. This extended portion 113A5 of the CS bus line 113 also contributes to forming a storage capacitor. If the opaque portions are defined by these extended portions 113A1 through 113A5 of the CS bus line 113 in this manner, the dimensions of the respective extended portions are defined with the influence on the capacitance value on the storage capacitor CS taken into consideration.

In a situation where the central crossed dark lines are all shielded as shown in FIG. 25, even if misalignment has occurred in the photolithographic process step to define a multi-domain structure, the variation in the areas of the four liquid crystal domains (see the liquid crystal domains A through D shown in FIG. 1) can be minimized. Specifically, as already described with reference to FIG. 2(a), if the photo-mask has misaligned in a photolithographic process step to form a multi-domain structure, then the areas of the liquid crystal domains A through D will vary from the predetermined values. In that case, if the opaque portions are provided

to shield the crossed dark lines at the boundary between the liquid crystal domains and if the boundary between the liquid crystal domains that has actually been defined as a result of the misalignment falls within the width of the opaque portions, then the areas of the portions of the liquid crystal domains A through D that contribute to the display operation will not vary from their predetermined values. As described above, the areas of the liquid crystal domains A through D are preferably substantially equalized with each other to achieve a sufficiently good viewing angle characteristic.

If the opaque portions should be omitted if possible to achieve a sufficiently high luminance and if each pixel (or subpixel) has a vertically elongated shape, an opaque portion for shielding the horizontally extending dark line CL2 in the central crossed dark lines is preferably omitted and an opaque portion for shielding the dark line CL1 extending vertically (i.e., in the longitudinal direction) is preferably provided as shown in FIG. 24. By providing such a vertically extending opaque portion, even if the photomask has misaligned, the variation in viewing angle characteristic can be reduced. This point will be described with reference to FIGS. 26(a) through 26(c).

FIGS. 26(a) through 26(c) schematically illustrate elongated pixels with dimensions of 210 μm × 140 μm. The multi-domain structure thereof is the four-domain structure with the liquid crystal domains A through D shown in FIG. 1. In each of FIGS. 26(a) through 26(c), a pixel in a left-side region (which will be referred to herein as an "L region") of the liquid crystal panel is shown on the left-hand side, while a pixel in a right-side region (which will be referred to herein as an "R region") of the liquid crystal panel is shown on the right-hand side. These drawings schematically illustrate situations where in the manufacturing process of this liquid crystal panel, the right and left halves of the liquid crystal panel are irradiated with light separately in the photo-alignment treatment due to its huge size, for example, and where the photomask has misaligned in the opposite directions either vertically or horizontally on the right and left halves. In FIGS. 26(a) through 26(c), the dashed lines are boundaries that divide each pixel into four domains.

In this example, the pixels 10A1 and 10A2 shown in FIG. 26(a) include only a vertical opaque portion 21, while the pixels 10B1 and 10B2 shown in FIG. 26(b) include only a horizontal opaque portion 22. The vertical and horizontal opaque portions 21 and 22 both have a width of 5 μm. And the pixels 10C1 and 10C2 shown in FIG. 26(c) have no central opaque portions at all. The magnitude of misalignment is ±5 μm. In the left-side region, the photomask has misaligned 5 μm rightward and 5 μm upward. On the other hand, in the right-side region, the photomask has misaligned 5 μm leftward and 5 μm downward.

The following Table 1 shows the area ratios of the liquid crystal domains A through D in the respective pixels shown in FIGS. 26(a) through 26(c) (respectively corresponding to a through c in Table 1). It should be noted that the area ratios of the respective liquid crystal domains are shown with the widths of the dark lines CL1 and CL2 not taken into account and with the area of the pixel minus the area of the portion to be shielded by the opaque portion supposed to be one.

TABLE 1

	Area ratios of respective domains				Total
	A	B	C	D	
aL region	0.2469	0.2716	0.2293	0.2522	1
aR region	0.2522	0.2293	0.2716	0.2469	1

TABLE 1-continued

	Area ratios of respective domains				Total
	A	B	C	D	
bL region	0.2613	0.2744	0.2265	0.2378	1
bR region	0.2378	0.2265	0.2744	0.2613	1
cL region	0.2551	0.2806	0.2211	0.2432	1
cR region	0.2432	0.2211	0.2806	0.2551	1

On the other hand, the following Table 2 shows the ratios of the luminance of the pixel in the right-side region to that of the pixel in the left-side region when the screen is viewed at a polar angle of 50 degrees (i.e., so as to define an angle of 50 degrees with respect to a normal to the display screen) in an azimuthal direction of 0 degrees (i.e., the horizontal direction and three o'clock direction on a clock face) and in an azimuthal direction of 90 degrees (i.e., the vertical direction and twelve o'clock direction on a clock face). Table 2 also shows the increase in the luminance of the pixel in the right-side region with respect to that of the pixel in the left-side region.

TABLE 2

	R region luminance/L region luminance		Increase in luminance of R region to that of L region	
	Azimuth of 0°	Azimuth of 90°	Azimuth of 0°	Azimuth of 90°
a	1.100	0.929	+9.98%	-7.13%
b	1.050	0.867	+5.00%	-13.31%
c	1.100	0.867	+9.98%	-13.31%

In the example shown in FIG. 26(c) in which no central opaque portions are provided (corresponding to c in Tables 1 and 2), the difference in luminance between the pixels in the right- and left-side regions is greater than 10% at the azimuth of 90 degrees. As a result, a seam of the light radiated (representing the boundary between the right- and left-side regions) is visible.

In the example shown in FIG. 26(b) in which only a horizontal opaque portion is provided (corresponding to b in Tables 1 and 2), the difference in luminance between the pixels in the right- and left-side regions is as small as 5% at an azimuth of 0 degrees but is greater than 10% at the azimuth of 90 degrees. As a result, a seam of the light radiated is also perceptible.

On the other hand, in the example shown in FIG. 26(a) in which only a vertical opaque portion is provided (corresponding to a in Tables 1 and 2), the difference in luminance between the pixels in the right- and left-side regions is less than 10% at both of the azimuths of 0 degrees and 90 degrees. As a result, a seam of the light radiated is hardly noticeable.

As a result of a subjective perception test, the present inventors confirmed that the seam was hardly perceptible if the difference in luminance between the pixels in the right- and left-side regions was within 10%. Thus, by adopting the arrangement shown in FIG. 26(a), the seam of the light radiated can be imperceptible even if the misalignment has occurred.

If only portions of the domain lines produced in the vicinity of the edge portions of the pixel electrode and only portions of the central dark lines in the pixel region need to be shielded, the opaque portions are preferably provided such that the difference in luminance becomes 10% or less under the conditions described above even when misalignment occurs as just described with reference to FIG. 26.

In the examples described above, the opaque portions are provided in most cases to shield the edge portions and the domain lines produced near the edge portions within the pixel region. However, if the pixel aperture ratio should be given a higher priority to strike an adequate balance between the pixel aperture ratio and the viewing angle characteristic, an arrangement for shielding part or all of the domain lines without shielding the edge portions may also be adopted. For instance, in the examples shown in FIGS. 20 and 21, not all of the edge portions and domain lines need to be shielded so that there is a non-shielded region between the extended portion 113E1 of the CS bus line 113 or the extended portion 112E1 of the gate bus line 112 and the source bus line 114. Also, in the examples shown in FIGS. 20 and 21, a structure in which the source bus line 114 (and the gate bus line 112) and the subpixel electrode 111a overlap each other is adopted to achieve a high aperture ratio. However, if a structure in which the source bus line 114 (and the gate bus line 112) and the subpixel electrode 111a do not overlap each other is adopted, the opaque portion for shielding the edges of the subpixel electrode 111a may be omitted.

(Pretilt Angle and Locations of Domain Lines)

The domain lines are produced in the edge portions due to the inconsistent orientations of liquid crystal molecules as already described in detail with reference to FIGS. 6 through 9. That is why the locations of the domain lines and the distances of the domain lines from the edges of the pixel electrode also depend on the pretilt angle.

Hereinafter, it will be described with reference to FIGS. 27(a) and 27(b) how the locations of the domain lines change according to the pretilt angle. The pixel region 10D shown in FIG. 27(a) includes two subpixel regions 10Da and 10Db, while the pixel region 10E shown in FIG. 27(b) includes two subpixel regions 10Ea and 10Eb. Each of these subpixel regions has the four-domain structure consisting of the four liquid crystal domains A through D shown in FIG. 1. FIGS. 27(a) and 27(b) schematically illustrate an opaque portion 23 and the domain lines DL1 through DL4 and the central dark lines CL1 and CL2 that are produced in the two apertures (corresponding to the subpixel regions). Specifically, the pixel region shown in FIG. 27(a) has a liquid crystal layer with a pretilt angle of 87.5 degrees, while the pixel region shown in FIG. 27(b) has a liquid crystal layer with a pretilt angle of 89.0 degrees.

As schematically shown in FIG. 27(a), in the pixel region 10D with the pretilt angle of 87.5 degrees, a part of the domain line DL4 is seen in the subpixel region 10Da and a part of the domain line DL2 is seen in the subpixel region 10Db.

On the other hand, in the pixel region 10E with the pretilt angle of 89.0 degrees as schematically shown in FIG. 27(b), almost all of the domain line DL4 and parts of the domain lines DL1 and DL3 are seen in the subpixel region 10Ea, while almost all of the domain line DL2 and parts of the domain lines DL1 and DL3 are seen in the subpixel region 10Eb.

As can be seen, as the pretilt angle nears 90 degrees, the locations of the domain lines DL1 through DL4 shift inward in the pixel region. In that case, if the domain lines DL1 through DL4 were shielded, the pixel aperture ratio would decrease significantly. For that reason, to achieve a sufficiently high pixel aperture ratio (luminance), the pretilt angle is preferably decreased.

Nevertheless, the more the pretilt angle is decreased from 90 degrees, the higher the luminance in the black display state (i.e., the lower the quality of the black display) and the lower

the contrast ratio. That is why the pretilt angle is preferably set so as to strike an adequate balance between the luminance and the contrast ratio.

FIG. 28 is a graph showing how the transmittance (or luminance) changes with the pretilt angle, while FIG. 29 is a graph showing how the contrast ratio changes with the pretilt angle. In these graphs, the ordinate is normalized with the value associated with a pretilt angle of 89 degrees.

Considering the results shown in FIGS. 28 and 29, a pretilt angle range in which the luminance and the contrast ratio are both satisfactory would be from 86.0 degrees through 89.0 degrees.

As described above, the viewing angle characteristic can be improved by providing opaque portions for shielding at least portions of the domain lines produced in the pixel edge portions and/or at least portions of the central dark lines. However, the portions to shield may be determined appropriately so as to maintain a harmonious balance between the viewing angle characteristic and the luminance or the contrast ratio.

The multi-domain structure applicable to the liquid crystal display device of the present invention is not limited to that specifically described above but may also be any of the multi-domain structures that have been described with reference to FIGS. 2 through 5. Therefore, opaque portions for shielding at least portions of the domain lines produced in the edge portions and at least portions of the boundary areas at the center of the pixel region (or subpixel region) where liquid crystal domains are adjacent to each other may be formed by using at least partially at least one line to be selected from the group consisting of the gate bus line, source bus line, drain extension line, CS bus line, extended portion of the gate bus line and extended portion of the CS line on the TFT substrate according to the type of the multi-domain structure applied. Also, if necessary, a black matrix (BM) on the counter substrate (i.e., color filter substrate) may be used as well. The shielding structures could be easily modified or combined according to the type of the specific multi-domain structure in various manners other than those specifically described above as embodiments of the present invention.

INDUSTRIAL APPLICABILITY

A liquid crystal display device according to the present invention can be used effectively as a TV monitor or in any other application that requires high display quality.

The invention claimed is:

1. A liquid crystal display device comprising:

a vertical alignment liquid crystal layer;

a first substrate and a second substrate, which face each other with the liquid crystal layer interposed between them;

a first electrode, which is arranged on the first substrate so as to face the liquid crystal layer;

a second electrode, which is arranged on the second substrate so as to face the liquid crystal layer; and
at least one alignment film, which is arranged in contact with the liquid crystal layer,

wherein a pixel region includes a first liquid crystal domain in which liquid crystal molecules are tilted in a predetermined first direction around the center of a plane, and approximately at the middle of the thickness, of the liquid crystal layer in response to a voltage applied, and wherein the first liquid crystal domain is located close to at least a part of an edge of the first electrode, the part including a first edge portion in which an azimuthal direction that is perpendicular to the part and that points

toward the inside of the first electrode defines an angle greater than 90 degrees with respect to the first direction, and
 wherein either the first substrate or the second substrate has an opaque member that includes a first opaque portion for selectively shielding at least a part of the first edge portion from incoming light, and
 wherein the pixel region further includes second, third and fourth liquid crystal domains in which liquid crystal molecules are tilted in second, third and fourth directions, respectively, around the center of the plane, and approximately at the middle of the thickness, of the liquid crystal layer in response to the voltage applied, the first, second, third and fourth directions being defined such that an angle formed between a two of the four directions is approximately equal to an integral multiple of 90 degrees, and
 wherein the second liquid crystal domain is located close to at least a part of another edge of the first electrode, the part including a second edge portion in which an azimuthal direction that is perpendicular to the part and that points toward the inside of the first electrode defines an angle greater than 90 degrees with respect to the second direction, and
 wherein the third liquid crystal domain is located close to at least a part of still another edge of the first electrode, the part including a third edge portion in which an azimuthal direction that is perpendicular to the part and that points toward the inside of the first electrode defines an angle greater than 90 degrees with respect to the third direction, and
 wherein the fourth liquid crystal domain is located close to at least a part of yet another edge of the first electrode, the part including a fourth edge portion in which an azimuthal direction that is perpendicular to the part and that points toward the inside of the first electrode defines an angle greater than 90 degrees with respect to the fourth direction, and
 wherein the opaque member further includes second, third and fourth opaque portions for selectively shielding at least a part of the second, third and fourth edge portions, respectively, from incoming light, and
 wherein the first, second, third and fourth liquid crystal domains are arranged such that the tilt directions of any two adjacent ones of the liquid crystal domains define an angle of approximately 90 degrees between them.

2. The liquid crystal display device of claim 1, wherein if the horizontal direction of a display screen has an azimuthal angle of zero degrees, the first, second, third and fourth directions are an approximately 225 degree direction, an approximately 315 degree direction, an approximately 45 degree direction and an approximately 135 degree direction, respectively, and
 wherein the first and third edge portions are parallel to a vertical direction and the second and fourth edge portions are parallel to the horizontal direction.

3. The liquid crystal display device of claim 1, wherein if the horizontal direction of a display screen has an azimuthal angle of zero degrees, the first, second, third and fourth directions are an approximately 225 degree direction, an approximately 315 degree direction, an approximately 45 degree direction and an approximately 135 degree direction, respectively, and
 wherein the first and third edge portions are parallel to the horizontal direction and the second and fourth edge portions are parallel to a vertical direction.

4. The liquid crystal display device of claim 1, wherein if the horizontal direction of a display screen has an azimuthal angle of zero degrees, the first, second, third and fourth directions are an approximately 225 degree direction, an approximately 315 degree direction, an approximately 45 degree direction and an approximately 135 degree direction, respectively, and
 wherein each of the first, second, third and fourth edge portions includes a first part that is parallel to the horizontal direction and a second part that is parallel to a vertical direction.

5. The liquid crystal display device of claim 1, wherein the first substrate further includes a TFT, a gate bus line, a source bus line, a drain extension line, and a storage capacitor line, and
 wherein one of the first, second, third, fourth, central and another opaque portions is defined by at least a portion of at least one line selected from the group consisting of the gate bus line, the source bus line, the drain extension line, and the storage capacitor line.

6. The liquid crystal display device of claim 5, wherein the at least one line has a portion that is bent or broadened in a direction that crosses its length direction, and
 wherein the at least the portion of the at least one line includes at least a part of the bent or broadened portion.

7. The liquid crystal display device of claim 5, wherein the first substrate further includes a gate bus line extended portion that branches from the gate bus line, and
 wherein one of the first, second, third and fourth opaque portions includes at least a part of the gate bus line extended portion, and
 wherein the gate bus line extended portion includes a part that is opposed to the drain extension line with an insulating layer interposed between them.

8. The liquid crystal display device of claim 1, wherein the second substrate further includes a black matrix layer, and
 wherein one of the first, second, third, fourth, central and another opaque portions is defined by a portion of the black matrix layer.

9. The liquid crystal display device of claim 1, further comprising two polarizers, which are arranged so as to face each other with the liquid crystal layer interposed between them and to have their transmission axes crossed at right angles,
 wherein the first, second, third and fourth directions define an angle of approximately 45 degrees with respect to the transmission axes of the two polarizers.

10. The liquid crystal display device of claim 1, wherein the vertical alignment liquid crystal layer includes a liquid crystal material with negative dielectric anisotropy, and
 wherein the at least one alignment film includes two alignment films that are arranged so as to sandwich the liquid crystal layer between them, respective pretilt directions defined by the two alignment films being different from each other by approximately 90 degrees.

11. The liquid crystal display device of claim 1, wherein the at least one alignment film includes two alignment films that are arranged so as to sandwich the liquid crystal layer between them, and
 wherein respective pretilt angles defined by the two alignment films are substantially equal to each other.

12. The liquid crystal display device of claim 1, wherein the at least one alignment film is a photo-alignment film.

专利名称(译)	液晶显示装置		
公开(公告)号	US7995177	公开(公告)日	2011-08-09
申请号	US11/916604	申请日	2006-06-09
[标]申请(专利权)人(译)	SHORAKU明弘 津幡町俊英 MIYACHI KOICHI 井上威一郎 山本晃弘 桥本芳登 久保MASUMI 金达明仁		
申请(专利权)人(译)	SHORAKU明弘 津幡町俊英 MIYACHI KOICHI 井上威一郎 山本晃弘 桥本芳登 久保MASUMI 金达明仁		
当前申请(专利权)人(译)	夏普株式会社		
[标]发明人	SHORAKU AKIHIRO TSUBATA TOSHIHIDE MIYACHI KOICHI INOUE IICHIRO YAMAMOTO AKIHIRO HASHIMOTO YOSHITO KUBO MASUMI JINDA AKIHITO		
发明人	SHORAKU, AKIHIRO TSUBATA, TOSHIHIDE MIYACHI, KOICHI INOUE, IICHIRO YAMAMOTO, AKIHIRO HASHIMOTO, YOSHITO KUBO, MASUMI JINDA, AKIHITO		
IPC分类号	G02F1/1337		
CPC分类号	G02F1/133753 G02F1/1337 G02F1/1393 G02F1/133512 G02F2001/133757		
优先权	2005169423 2005-06-09 JP 2006158140 2006-06-07 JP		
其他公开文献	US20090284703A1		
外部链接	Espacenet USPTO		
摘要(译)			

一种液晶显示装置，包括：垂直取向液晶层；第一和第二基板彼此面对，液晶层插入其中；第一和第二电极设置在第一和第二基板上以面对液晶层；和至少一个与液晶层接触的取向膜。像素区域包括第一液晶畴，其中液晶分子围绕平面的中心在第一方向上倾斜，并且响应于施加的电压，液晶层的大约在厚度的中间。第一液晶畴靠近第一电极的边缘的至少一部分。该部件包括第一边缘部分，在该第一边缘部分中，垂直于该部分并指向第一电极内部的方位角方向限定了与第一方向成大于90度的角度。第一或第二基板具有不透明构件，该不透明构件包括第一不透明部分，用于选择性地屏蔽第一边缘部分的至少一部分免受入射光的影响。

