



(19) **United States**

(12) **Patent Application Publication** (10) **Pub. No.: US 2001/0028414 A1**

Lyu et al.

(43) **Pub. Date:**

Oct. 11, 2001

(54) **LIQUID CRYSTAL DISPLAY HAVING WIDE VIEWING ANGLE**

(30) **Foreign Application Priority Data**

(76) Inventors: **Jae-Jin Lyu**, Kwangju-city (KR);
Kyeong-Hyeon Kim, Sennngnam-city (KR);
Hea-Ri Lee, Seoul (KR);
Jian-Min Chen, Suwon-city (KR)

May 29, 1997 (KR)..... 97-21708
Aug. 25, 1997 (KR)..... 97-40665

Publication Classification

(51) **Int. Cl.⁷** **G02F 1/1343**
(52) **U.S. Cl.** **349/39**

Correspondence Address:
MYERS BIGEL SIBLEY & SAJOVEC
PO BOX 37428
RALEIGH, NC 27627 (US)

(57) **ABSTRACT**

(21) Appl. No.: **09/877,481**

Apertures are formed in the common electrode or in the pixel electrode of a liquid crystal display to form a fringe field. Storage capacitor electrodes are formed at the position corresponding to the apertures to prevent the light leakage due to the disclination caused by the fringe field. The apertures extend horizontally, vertically or obliquely. The apertures in adjacent pixel regions may have different directions to widen the viewing angle.

(22) Filed: **Jun. 8, 2001**

Related U.S. Application Data

(62) Division of application No. 09/087,408, filed on May 29, 1998.

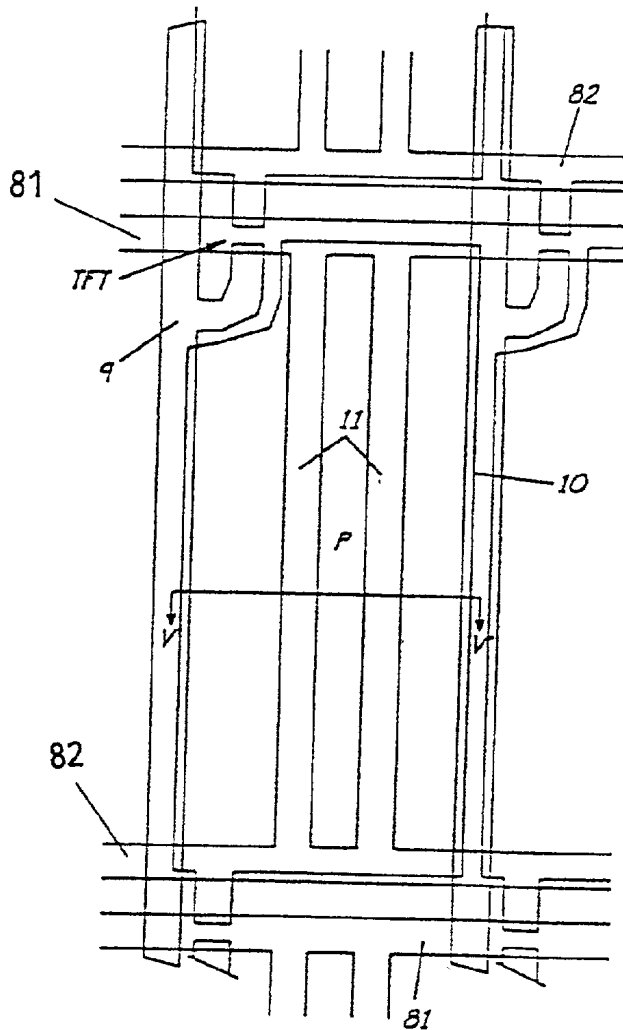


FIG. 1A

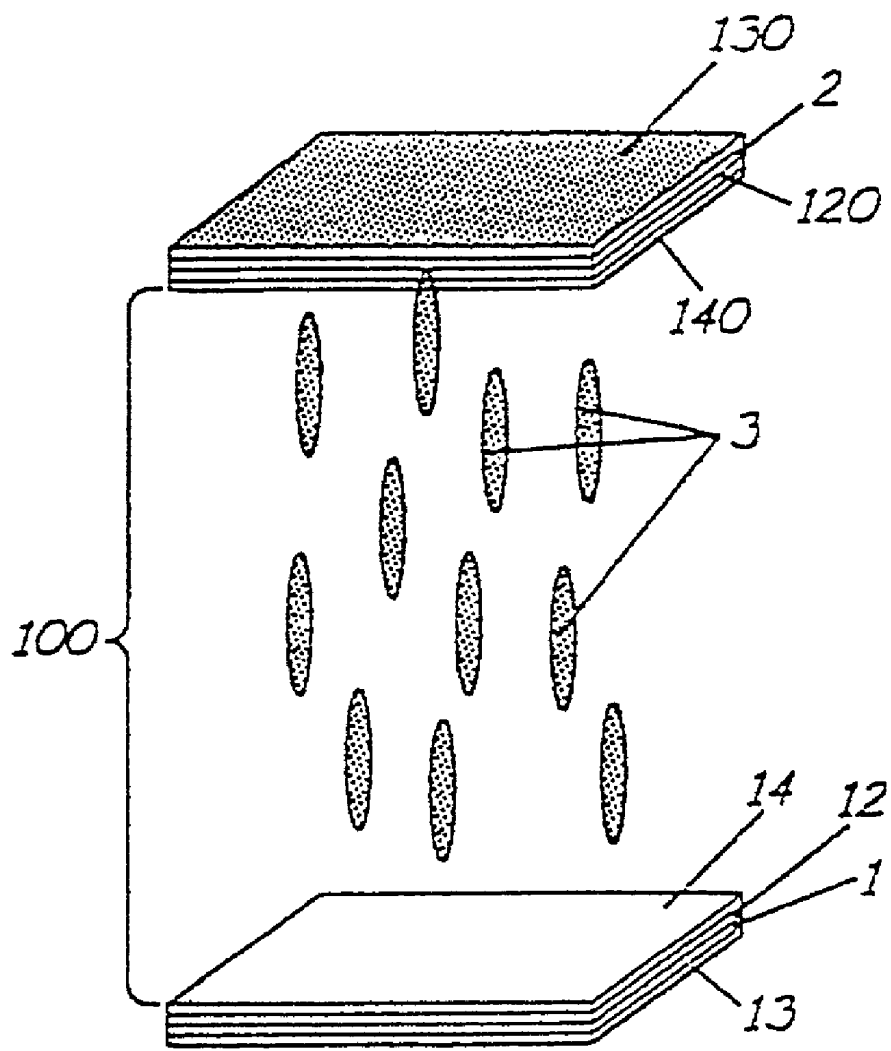


FIG. 1B

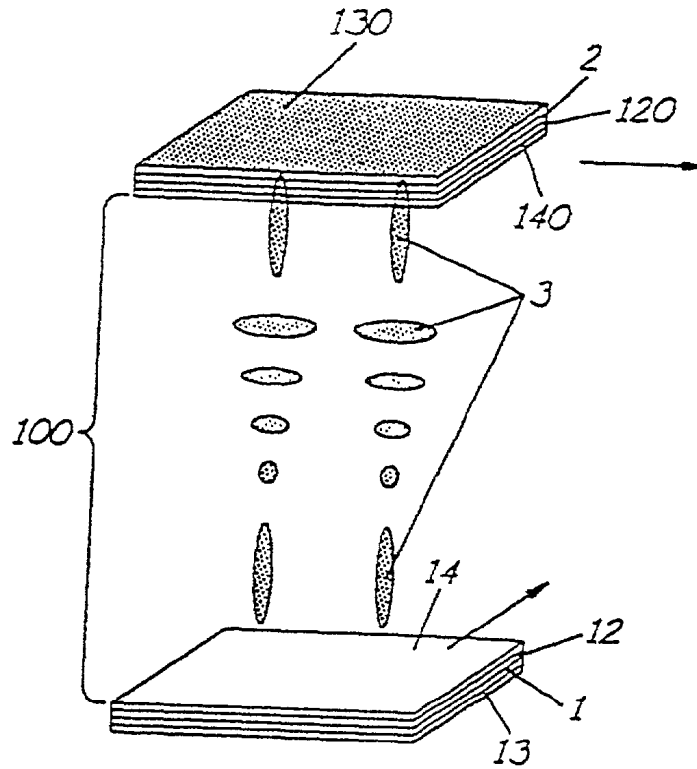


FIG. 2

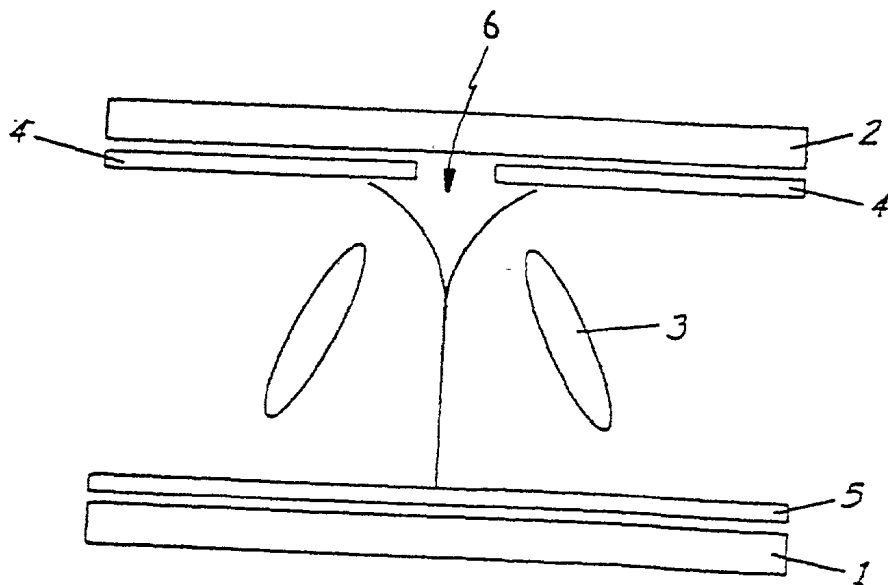


FIG. 3

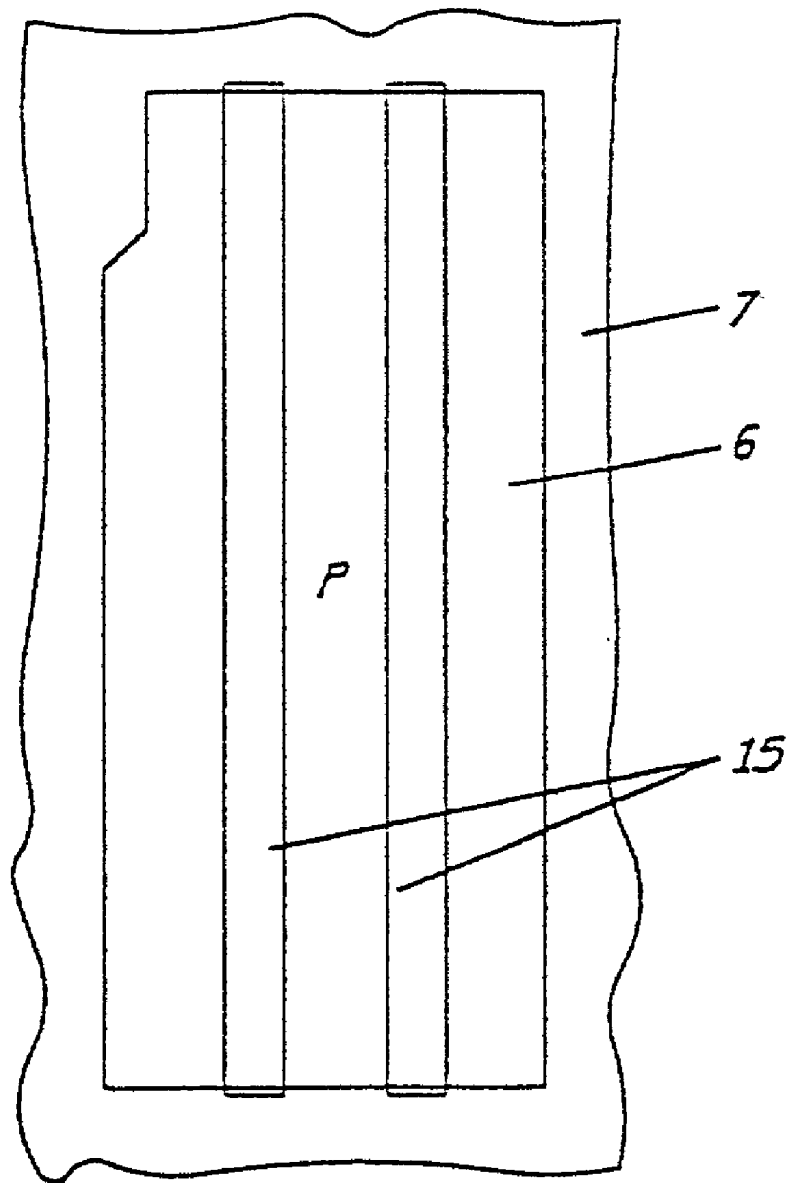


FIG. 4

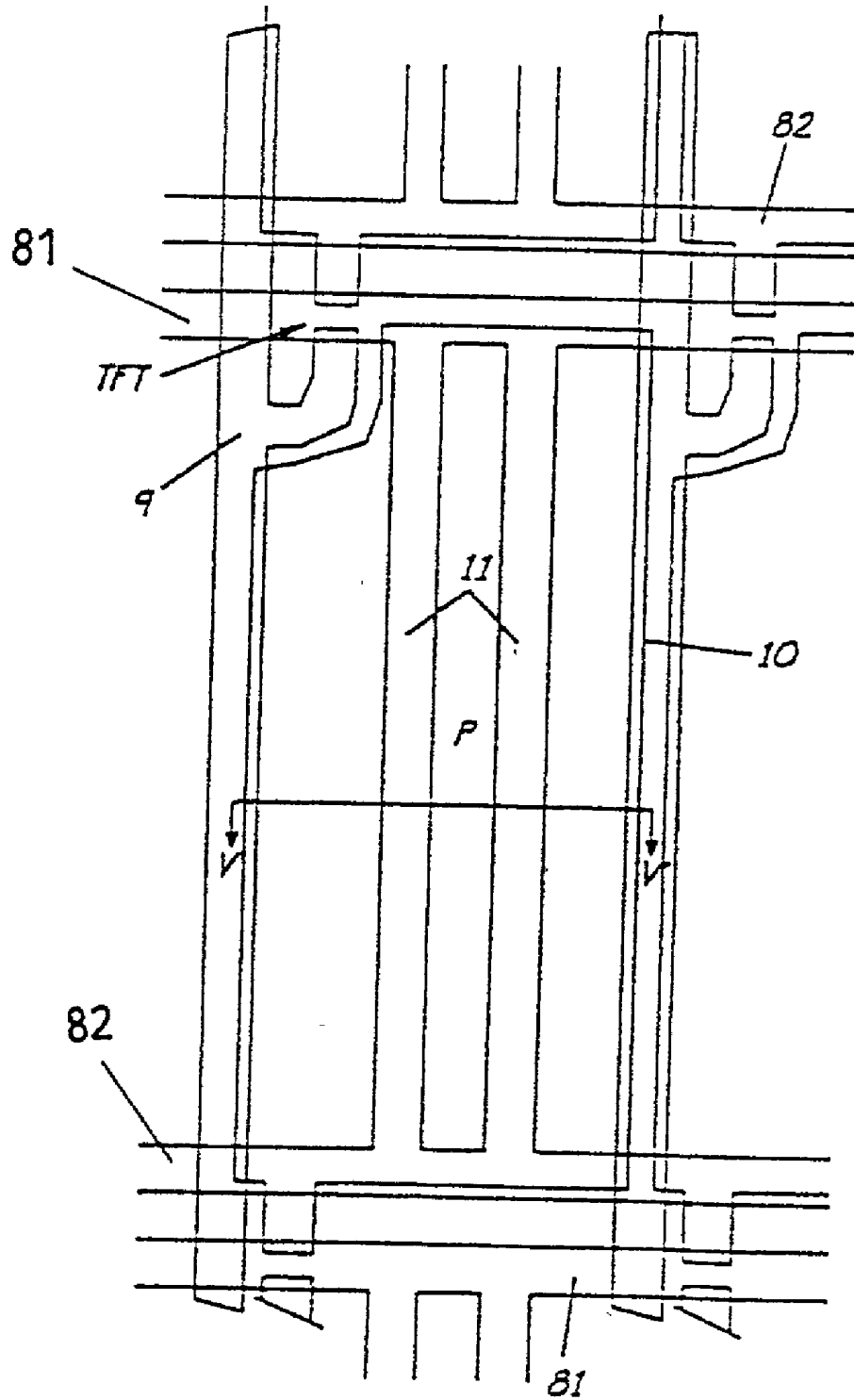


FIG.5

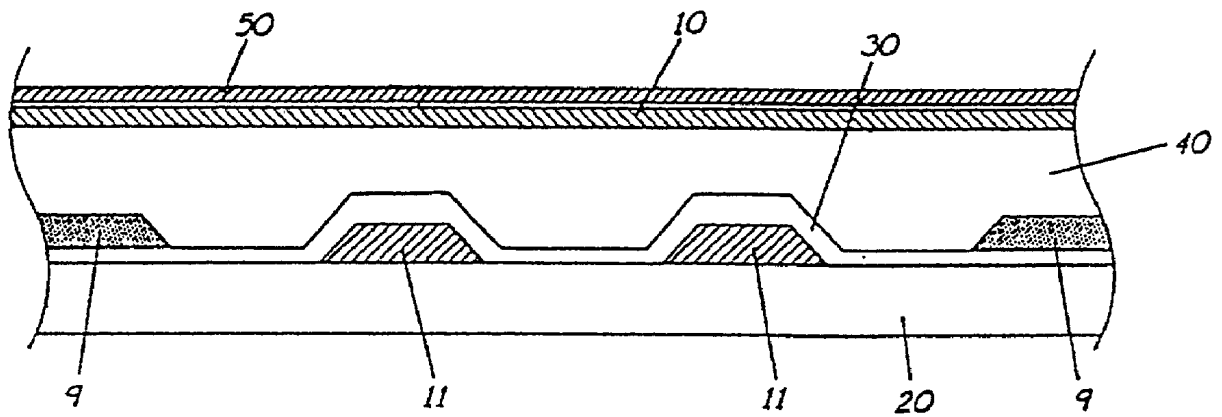


FIG. 6

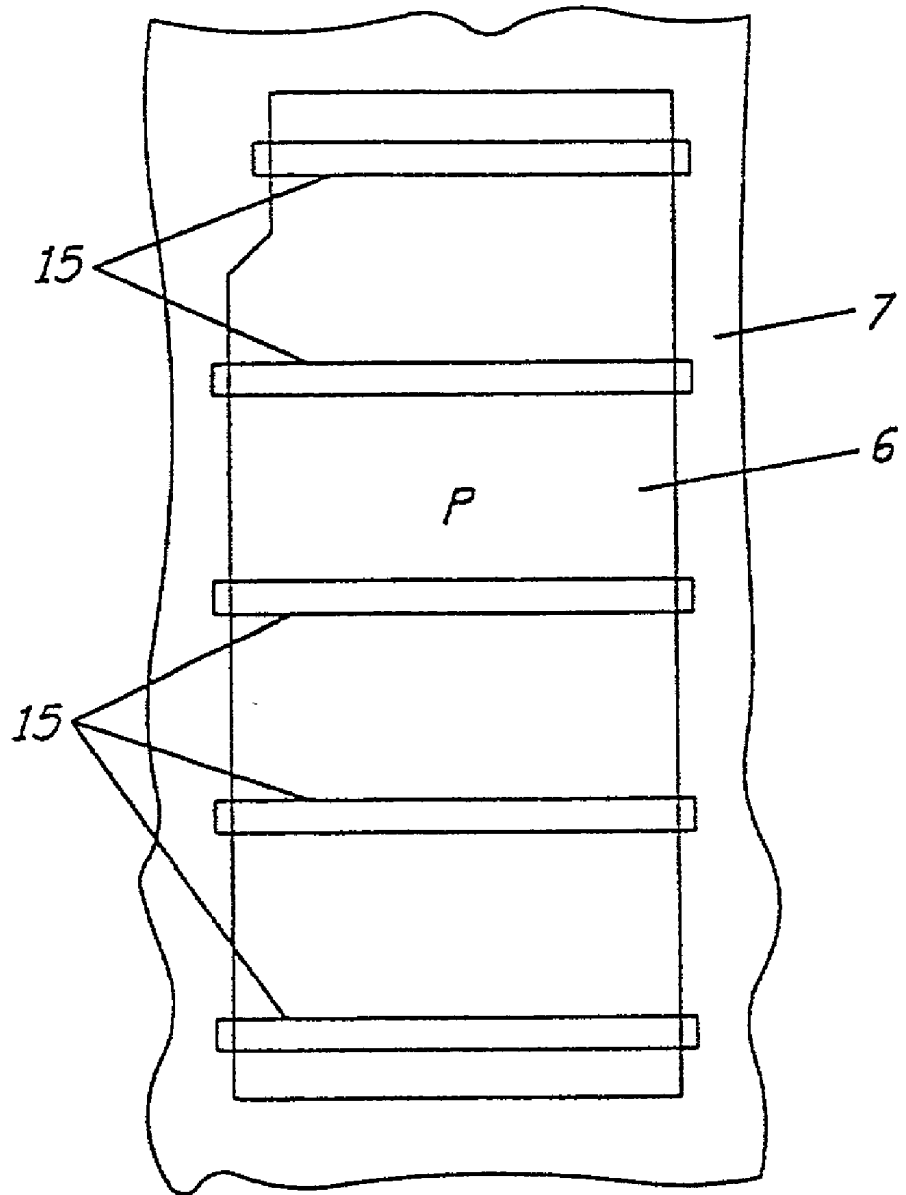


FIG. 7

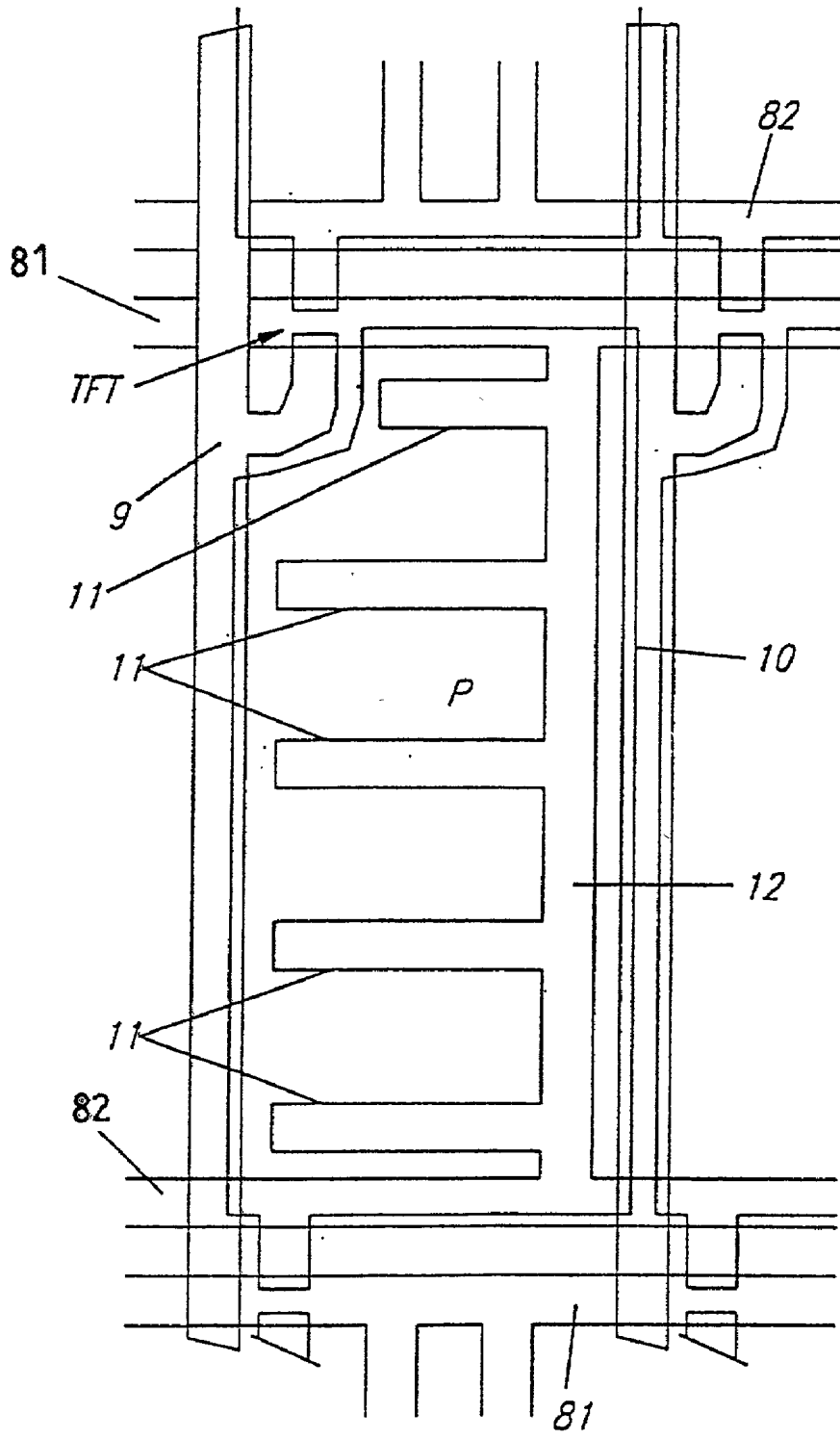


FIG. 8

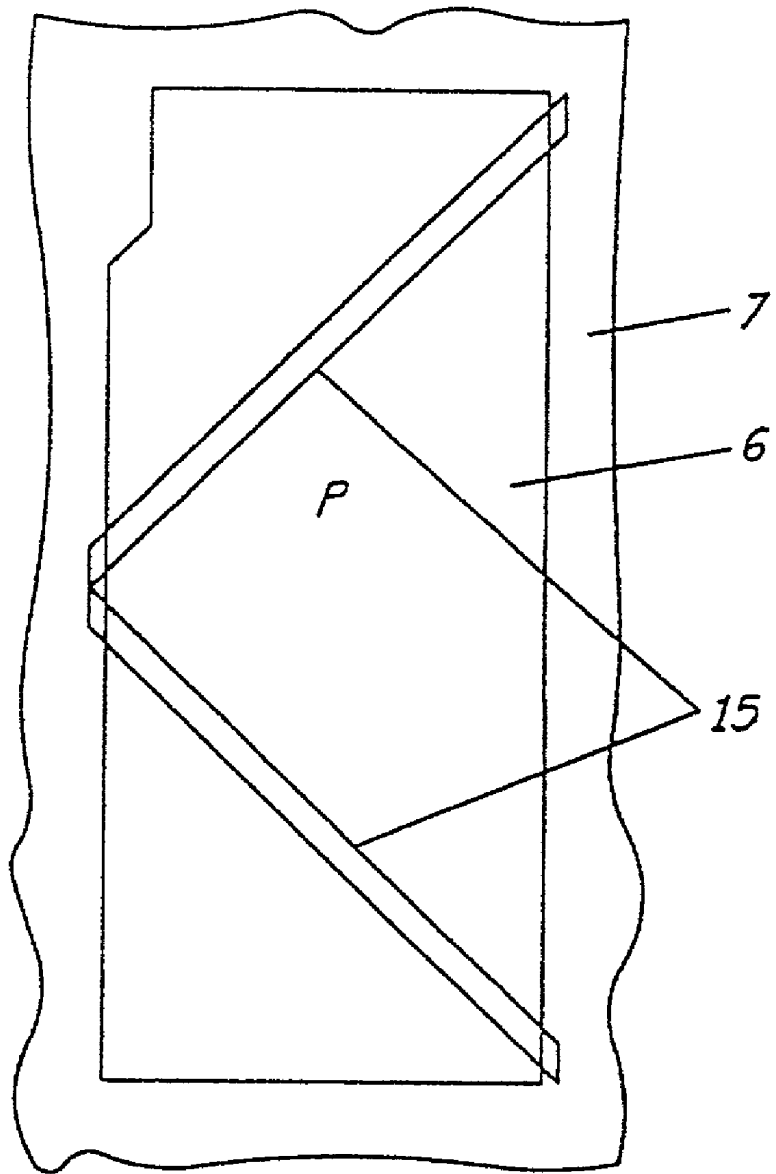


FIG. 9

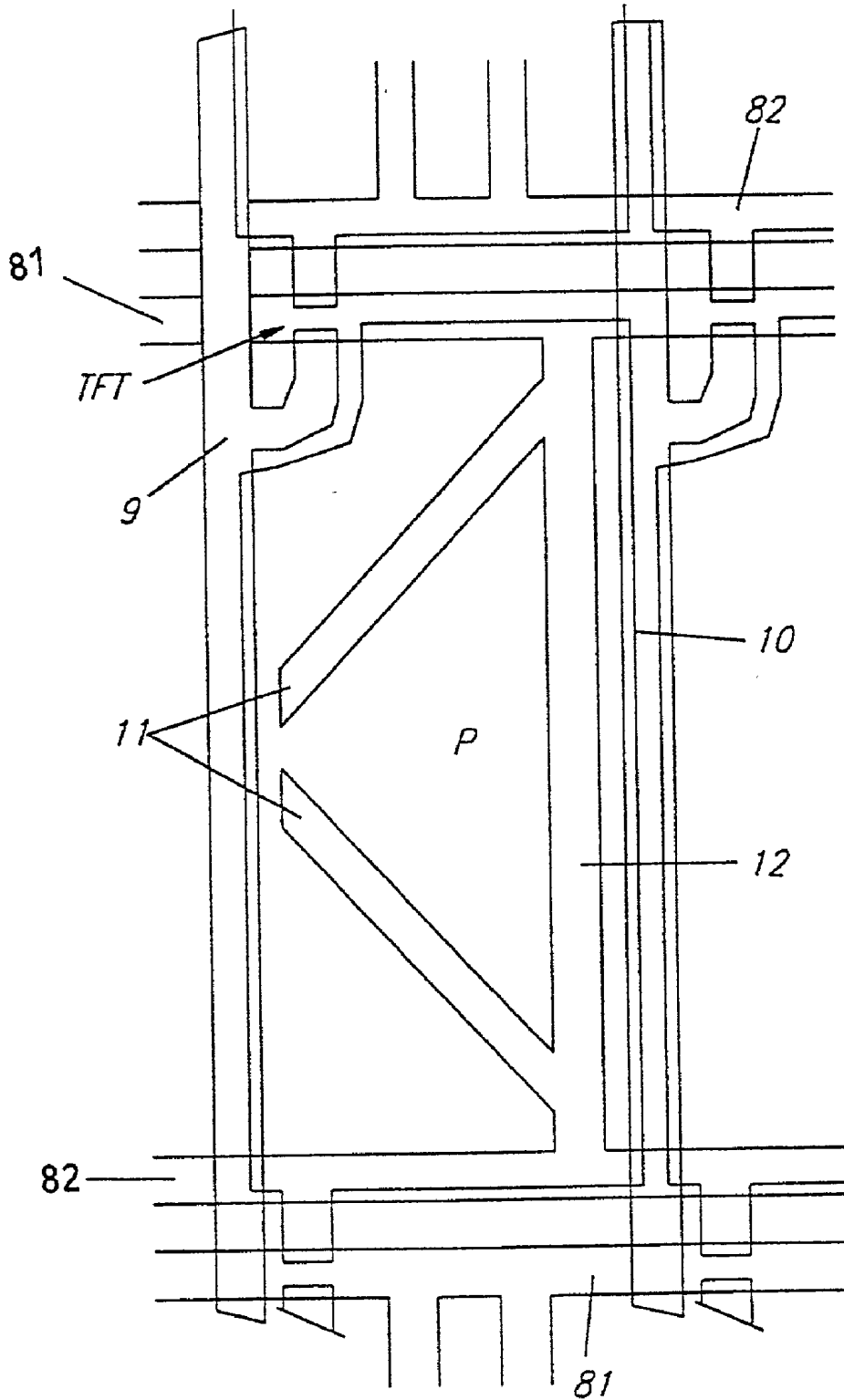


FIG. 10

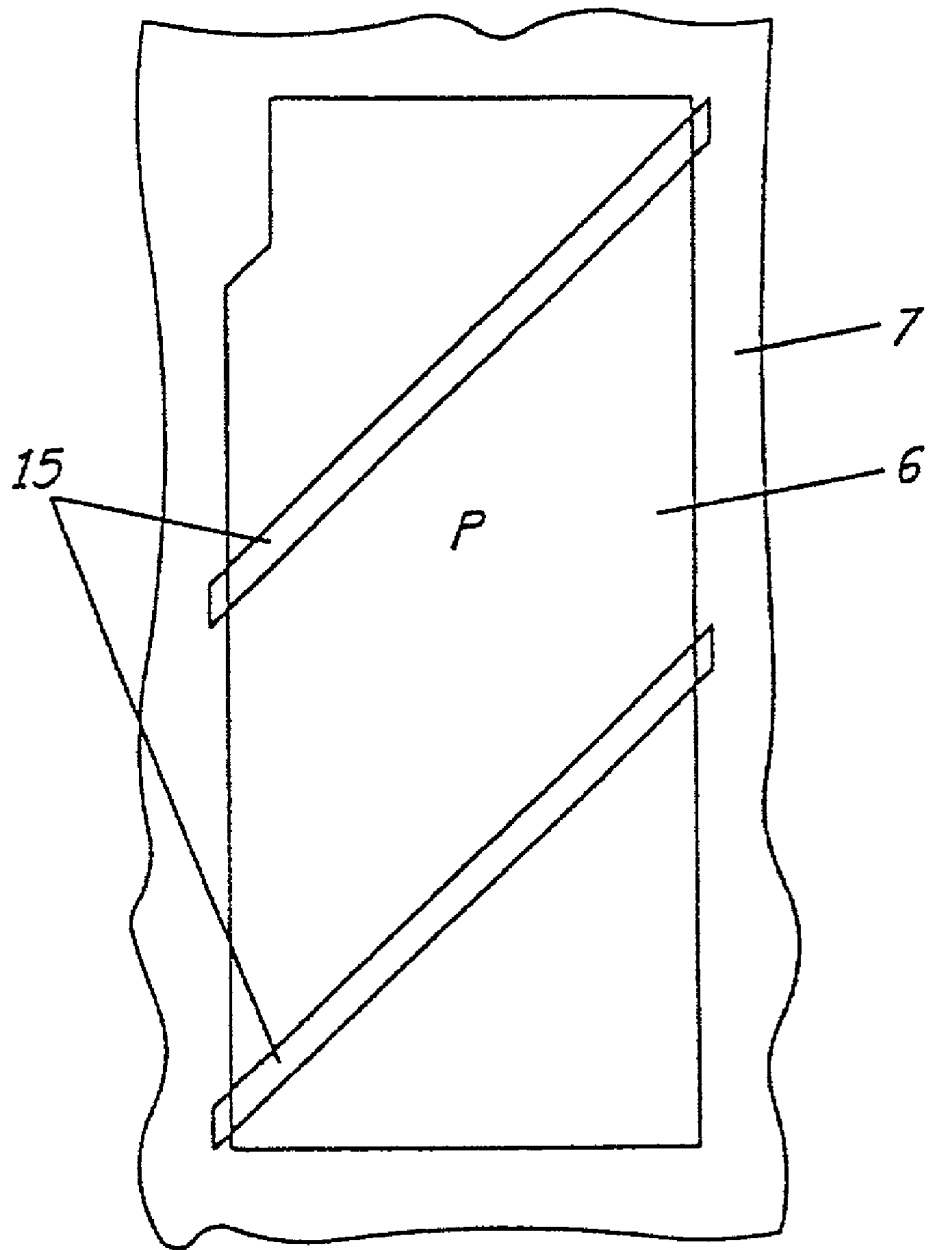


FIG. 11

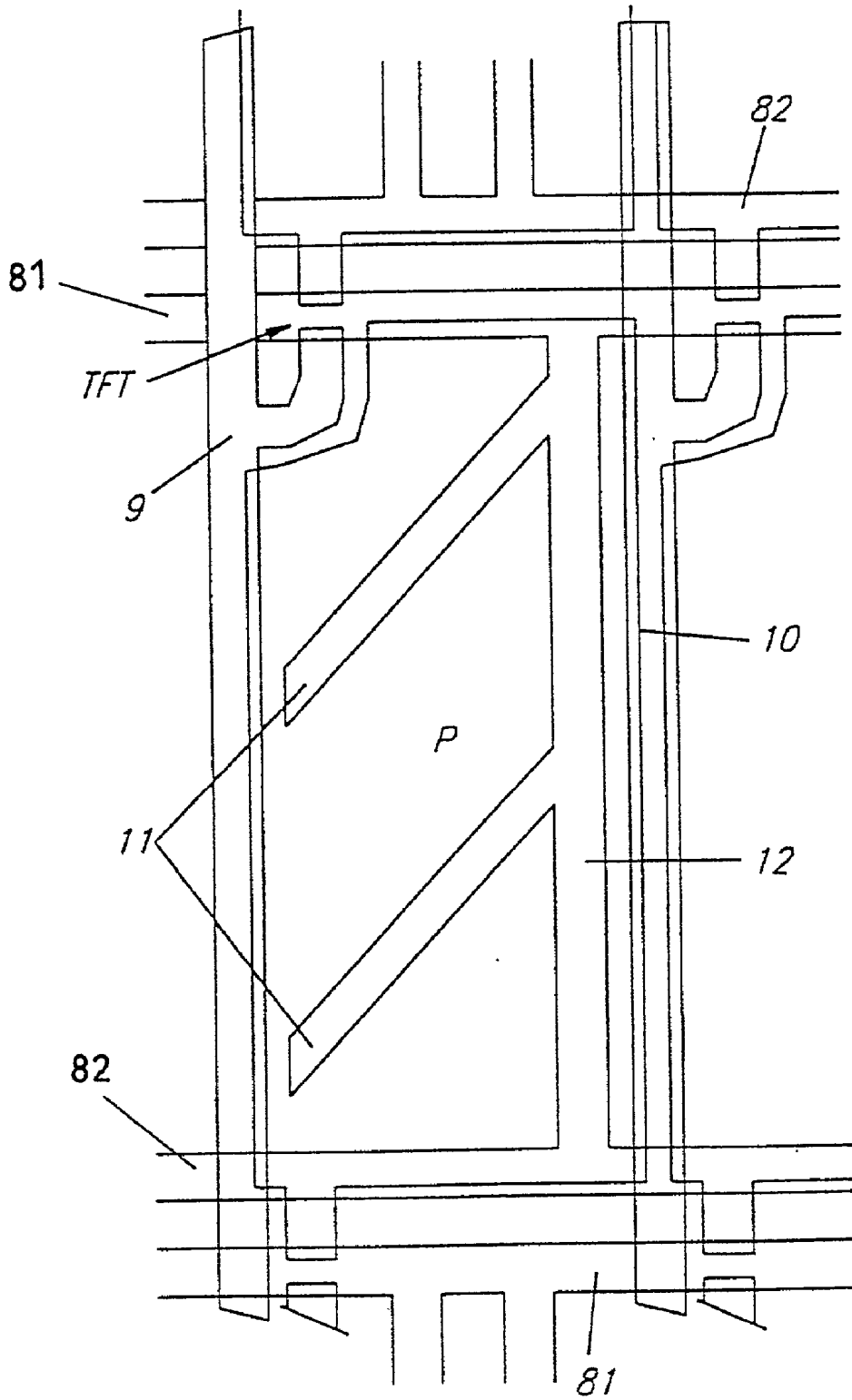


FIG. 12

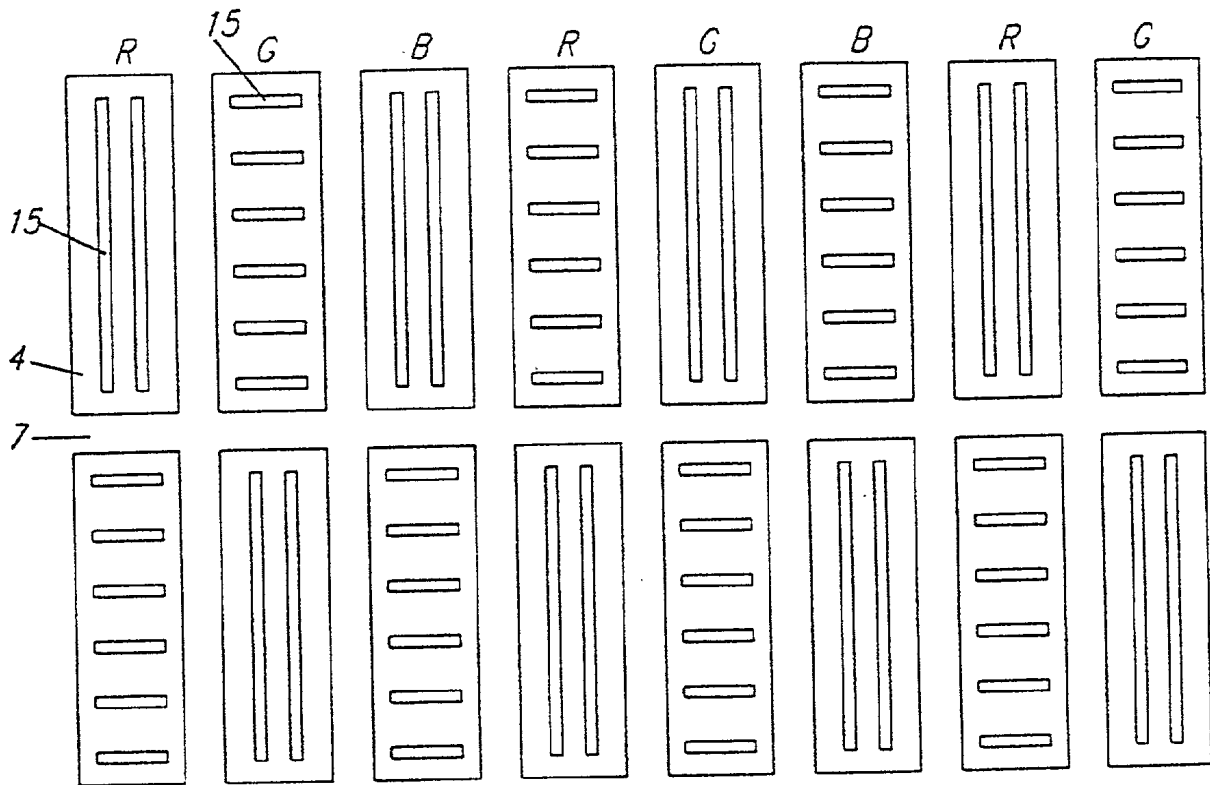


FIG. 13A

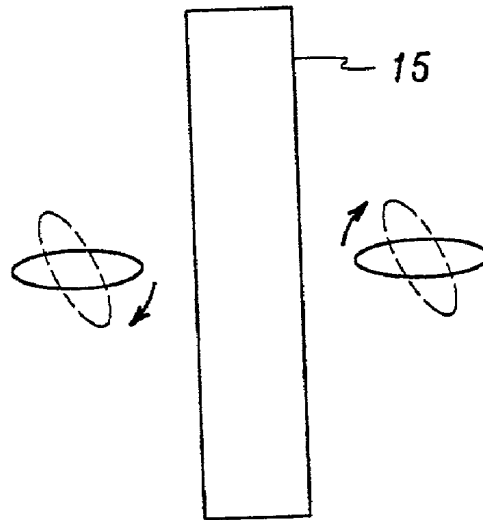


FIG. 13B

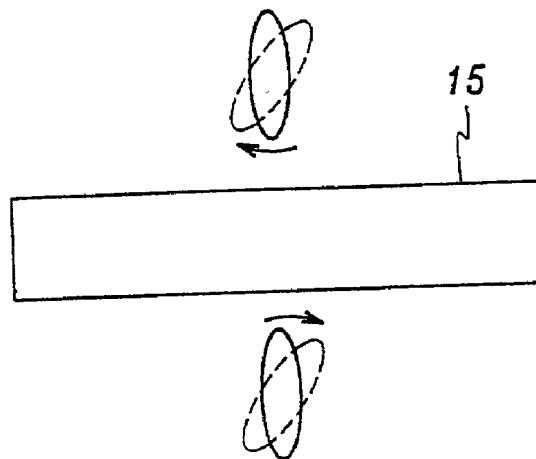


FIG. 14

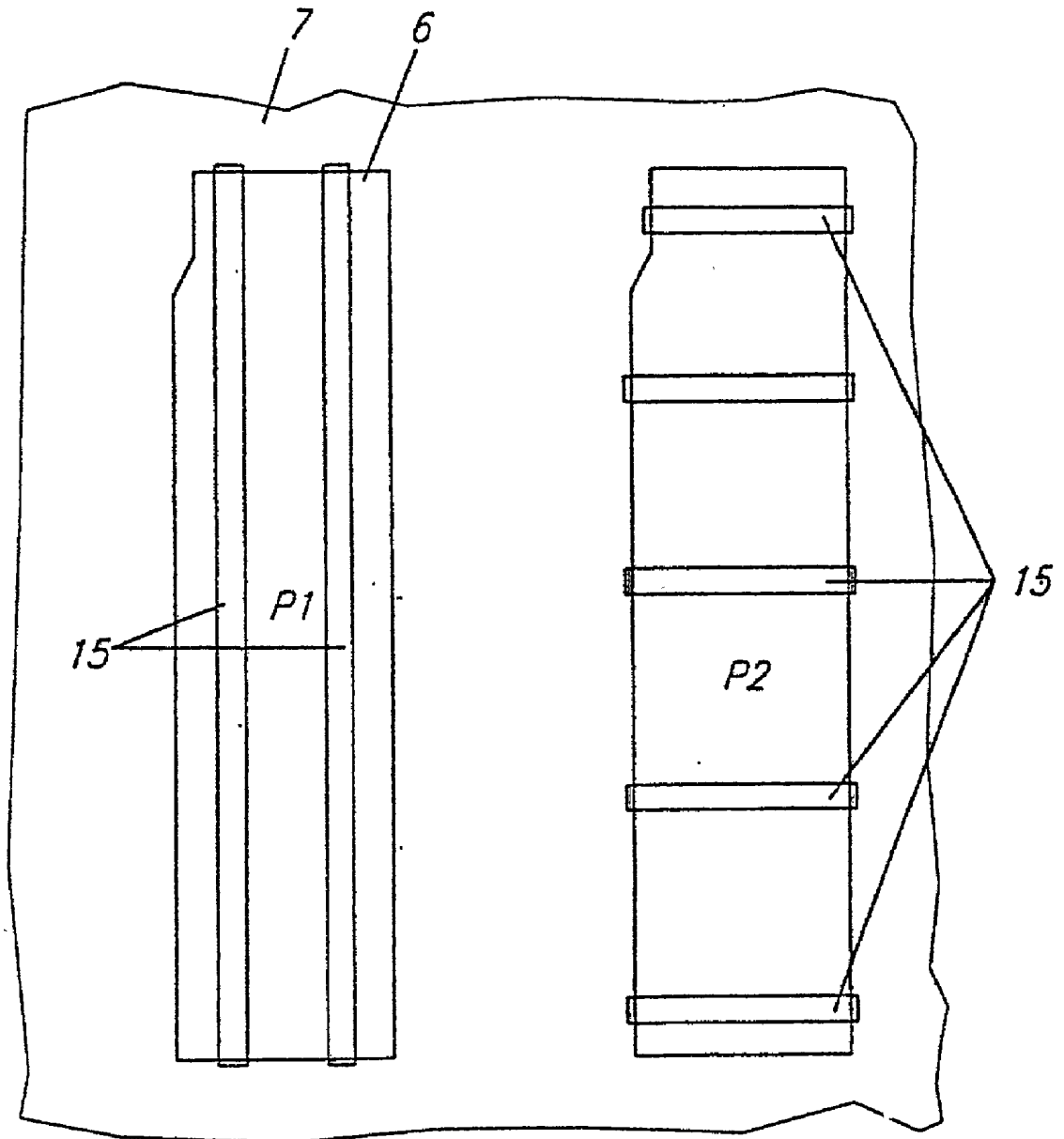


FIG. 15

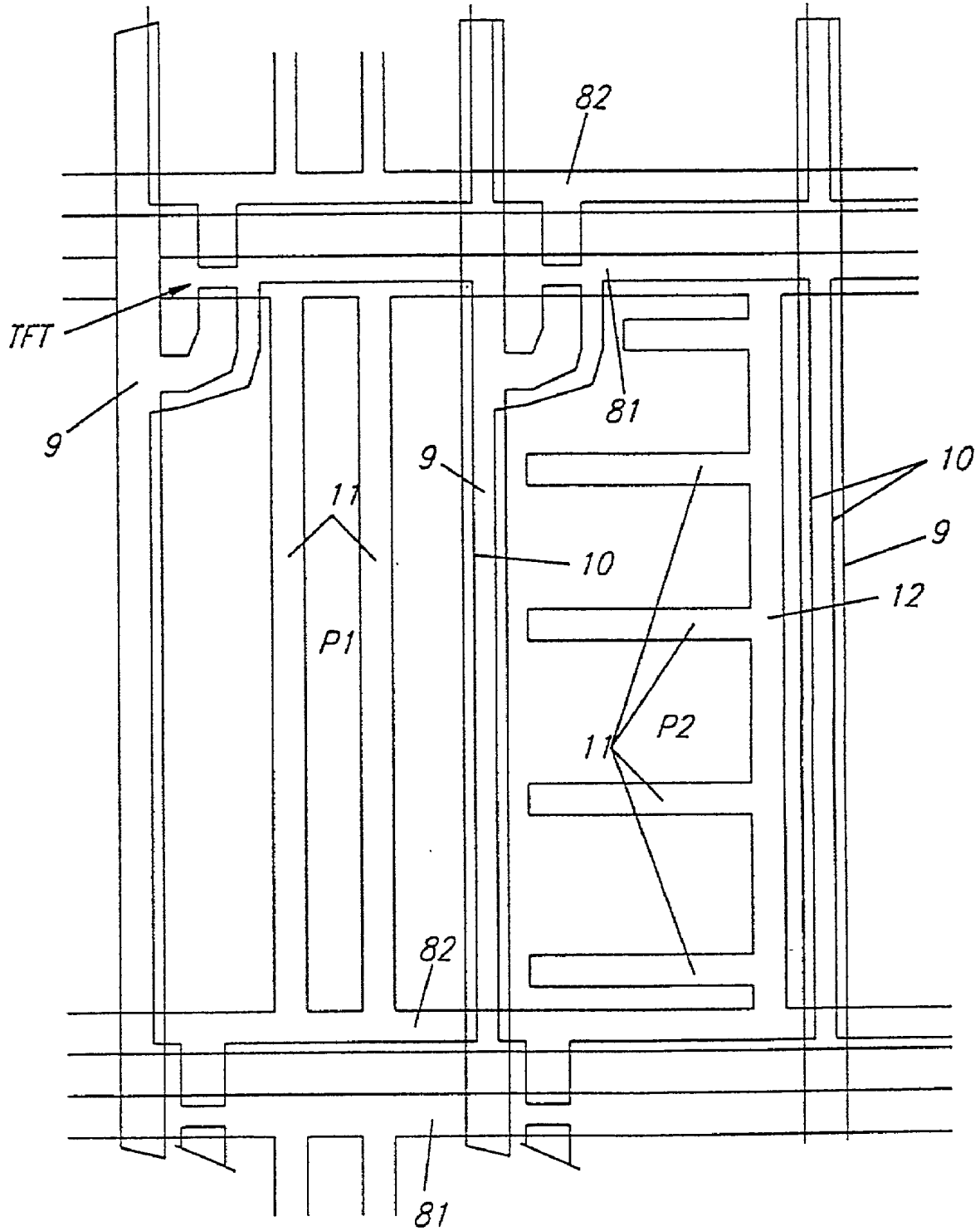


FIG. 16

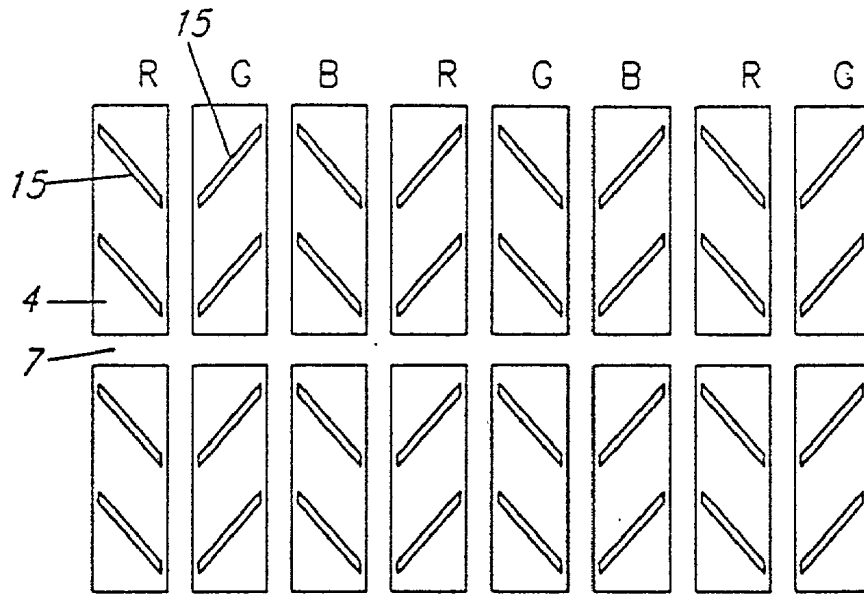


FIG. 17

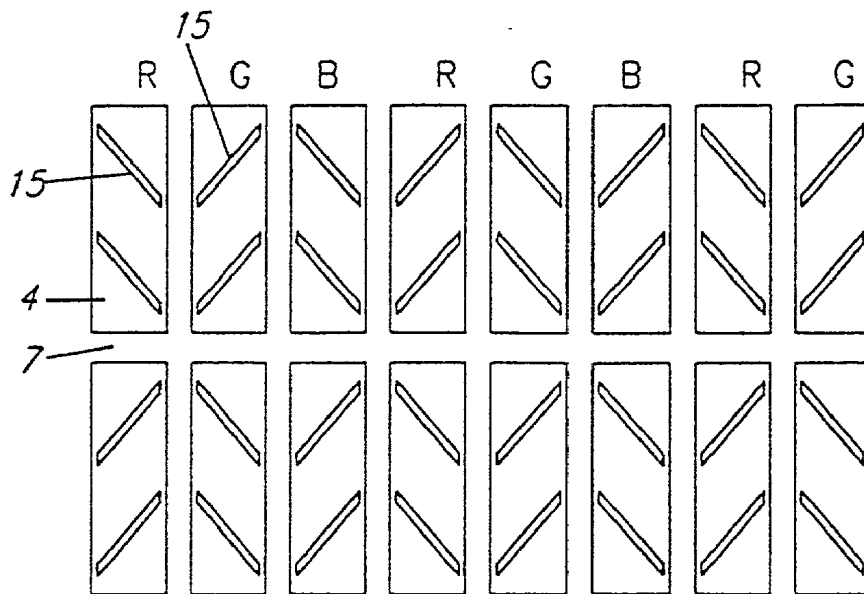


FIG. 18

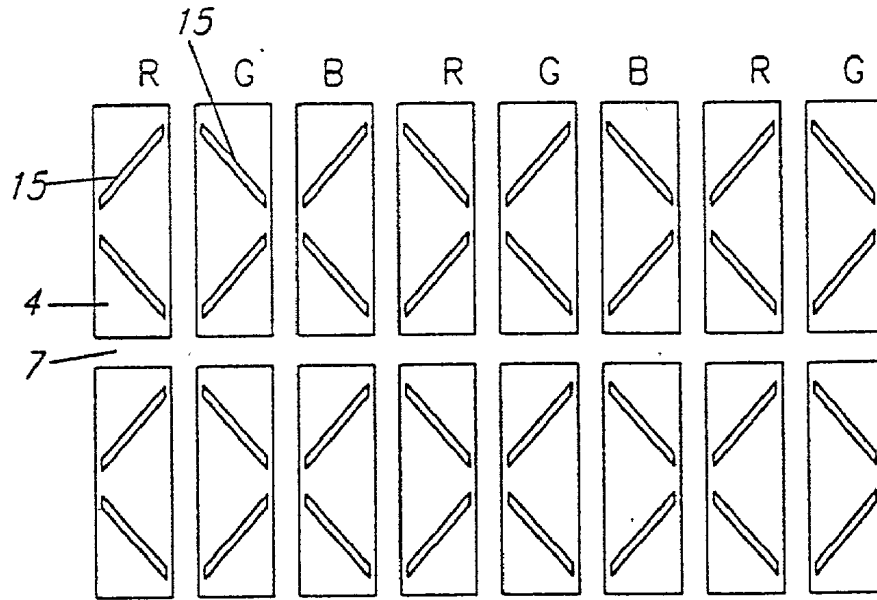


FIG. 19

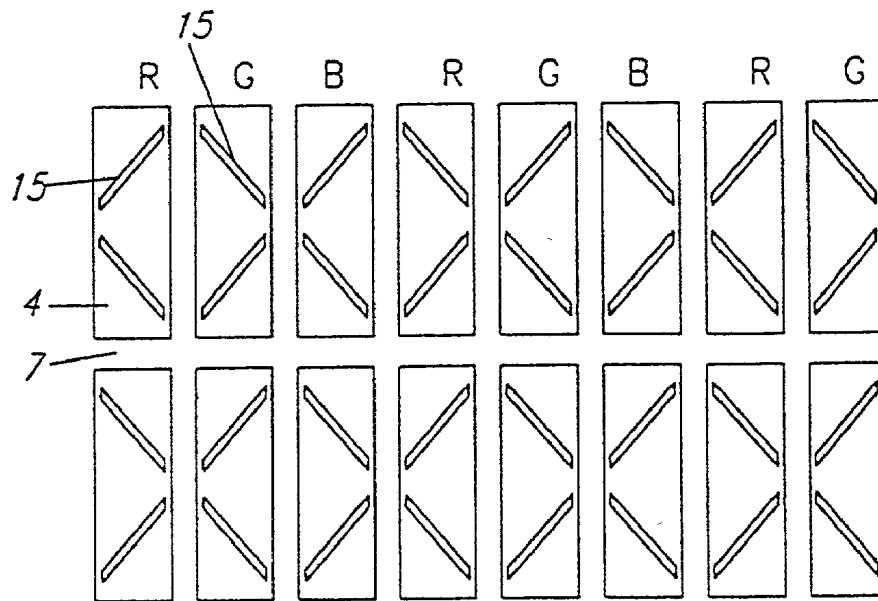
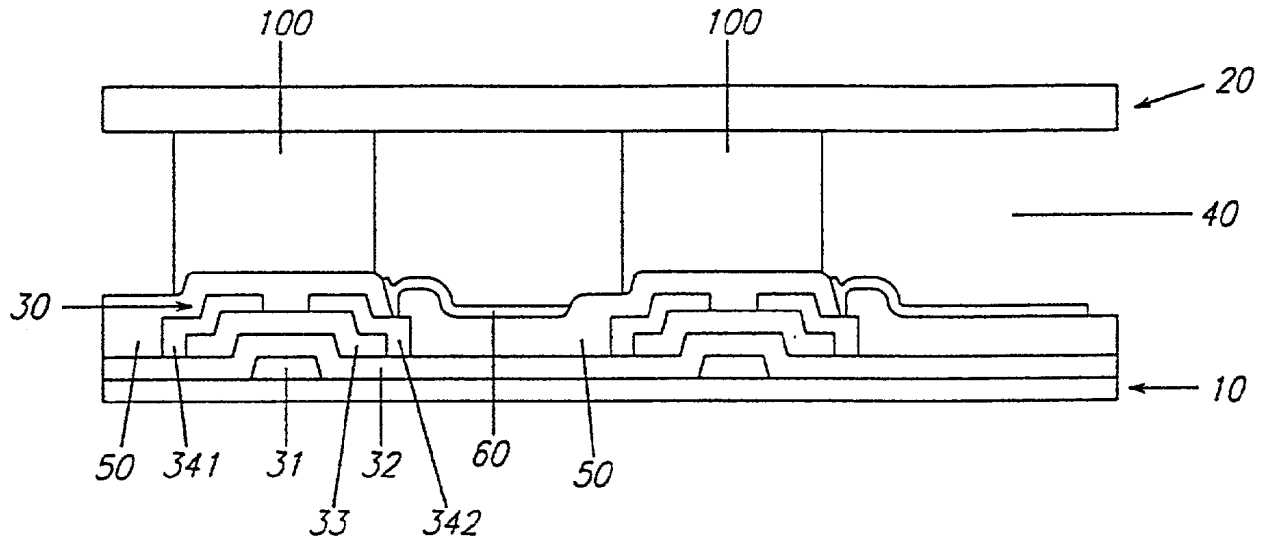


FIG. 20



LIQUID CRYSTAL DISPLAY HAVING WIDE VIEWING ANGLE

BACKGROUND OF THE INVENTION

[0001] (a) Field of the Invention

[0002] The present invention relates to a liquid crystal display having wide viewing angle.

[0003] (b) Description of the Related Art

[0004] A liquid crystal display (LCD) includes two substrates and a liquid crystal layer interposed therebetween. The transmittance of the light is controlled by the strength of the electric field applied to the liquid crystal layer.

[0005] A conventional twisted nematic (TN) liquid crystal display, which is one of the most widely used LCD, has a couple of transparent substrates which have transparent electrodes respectively on their inner surfaces, a liquid crystal layer between two substrates, and a couple of polarizers which are attached to the outer surfaces of the substrates respectively. In off state of the LCD, i.e., in the state that the electric field is not applied to the electrodes, the long axes of the liquid crystal molecules are parallel to the substrates and twisted spirally with a constant pitch from the inner surface of one substrate to that of the other substrate, and thus the orientation of the long axes of the liquid crystal molecules vary continuously.

[0006] However, the contrast ratio of the conventional TN LCD in a normally black mode may not be so high because the incident light is not fully blocked in its off state, i.e., in absence of the electric field.

[0007] To solve this problem, a vertically aligned twisted nematic (VATN) mode LCD is proposed in the US patent application Ser. No. 3,914,022 and in "Eurodisplay '93", pp. 158-159 by Takahashi.

[0008] The VATN in normally black mode may have an off state which is sufficiently dark, because the liquid crystal molecules are aligned perpendicular to the substrates in off state. However, the viewing angle of the VATN LCD may not be so wide.

[0009] On the other hand, T. Yamamoto et al. disclosed a VATN simple matrix LCD using fringe fields in "SID '91, pp. 762-765", and Lien proposed a structure having an aperture in the pixel electrode to solve the problem of low transmittance in on state of a simple matrix multi domain VATN.

[0010] However, the structure that Lien proposed may have light leakage generated near the aperture.

SUMMARY OF THE INVENTION

[0011] It is therefore an object of the present invention to widen the viewing angle of LCD.

[0012] It is another object of the present invention to prevent the disclination of LCD.

[0013] These and other objects features and advantages are provided, according to the present invention, by a liquid crystal display comprising a first substrate having a common electrode, a second substrate having a pixel electrode and a storage capacitor electrode. One of the electrodes has an

aperture and the storage capacitor electrode is located at the position corresponding to the aperture.

[0014] The storage capacitor electrode prevents the light leakage due to a fringe field generated from the aperture.

[0015] Between the first and the second substrates, a liquid crystal layer having negative dielectric anisotropy may be interposed. The liquid crystal layer may include chiral nematic liquid crystal or nematic liquid crystal having chiral dopant of 0.01-3.0 wt %.

[0016] Two substrates may have alignment layers respectively, to align the molecular axes of the liquid crystal molecules perpendicular to the substrates. The alignment layers may be rubbed or not.

[0017] The storage capacitor electrode may be connected to a gate line and the number of the storage capacitor electrode may be more than one.

[0018] It is preferable that the width of the aperture is 3-15 μm and the distance between the apertures is 8-50 μm .

[0019] To obtain the wide viewing angle, the linear apertures in adjacent pixel regions extend in the different directions. For example, if the direction of the aperture of one pixel is parallel to the gate line, the aperture of the adjacent pixel is preferably perpendicular to the gate line. As a result, the liquid crystal molecules rotate in 4 directions.

BRIEF DESCRIPTION OF THE DRAWINGS

[0020] FIGS. 1A and 1B are schematic diagrams of the alignment of liquid crystal molecules of a VATN LCD respectively in black state and white state according to an embodiment of the present invention

[0021] FIG. 2 shows the structure of the electrodes and the alignment of the liquid crystal molecules of a VATN LCD according to an embodiment of the present invention.

[0022] FIG. 3 is a layout view of a common substrate according to the first embodiment of the present invention

[0023] FIG. 4 is a layout view of a TFT (thin film transistor) substrate according to the first embodiment of the present invention.

[0024] FIG. 5 is a sectional view of a TFT substrate shown in FIG. 4 taken along the line V-V'.

[0025] FIG. 6 is a layout view of a common substrate according to the second embodiment of the present invention,

[0026] FIG. 7 is a layout view of a TFT substrate according to the second embodiment of the present invention.

[0027] FIG. 8 is a layout view of a common substrate according to the third embodiment of the present invention.

[0028] FIG. 9 is a layout view of a TFT substrate according to the third embodiment of the present invention.

[0029] FIG. 10 is a layout view of a common substrate according to the fourth embodiment of the present invention.

[0030] FIG. 11 is a layout view of a TFT substrate according to the fourth embodiment of the present invention.

[0031] FIG. 12 is a layout view of a substrate according to an embodiment of the present invention.

[0032] FIGS. 13A and 13B show rotated directions of the liquid crystal molecules near the apertures.

[0033] FIG. 14 is a layout view of a common substrate according to the fifth embodiment of the present invention.

[0034] FIG. 15 is a layout view of a TFT substrate according to the fifth embodiment of the present invention.

[0035] FIGS. 16-19 are layout views of substrates according to the sixth to the ninth embodiments of the present invention.

[0036] FIG. 20 is a sectional view of LCD according to an, embodiment of the present invention.

DETAILED DESCRIPTION OF THE PREFERRED EMBODIMENTS

[0037] The present invention will now be described more fully hereinafter with reference to the accompanying drawings, in which preferred embodiments of the present invention are shown. This invention may, however, be embodied in different forms and should not be construed as limited to the embodiments set forth herein. Rather, these embodiments are provided so that this disclosure will be thorough and complete, and will fully convey the scope of the invention to those skilled in the art. In the drawings, the thickness of layers and regions are exaggerated for clarity.

[0038] FIGS. 1A and 1B are schematic diagrams of the alignment of liquid crystal molecules of a VATN LCD respectively in black state and white state according to an embodiment of the present invention. FIG. 2 shows the structure of the electrodes and the alignment of the liquid crystal molecules of a VATN LCD according to an embodiment of the present invention.

[0039] As shown in FIGS. 1A and 1B, two glass substrates 1 and 2 are spaced apart from each other. On the inner surfaces of the substrates 1 and 2, transparent electrodes 12 and 120 made of a transparent conductive material such as ITO (indium tin oxide) or the like are formed respectively, and alignment layers 14 and 140 are formed thereon respectively. Between the substrates 1 and 2, a liquid crystal layer 100 including a chiral nematic liquid crystal having negative dielectric anisotropy or a nematic liquid crystal doped with chiral dopant of 0.01-0.3 wt % is disposed. On the outer surfaces of the substrates 1 and 2, polarizers 13 and 130 are attached. The polarizers 13 and 130 polarize the rays incident on the liquid crystal layer 100 and the rays out of the liquid crystal layer 100 respectively. The polarizing directions of the polarizers 13 and 130 are perpendicular to each other. The alignment layers 14 and 140 may be rubbed or not.

[0040] FIG. 1A shows the off-state that the electric field is not applied, where the long molecular axes of the liquid crystal molecules 3 in the liquid crystal layer 100 are aligned perpendicular to the surface of the substrates 1 and 2 by the aligning force of the alignment layers 14 and 140.

[0041] The polarized light by the polarizer 13 attached to the lower substrate 1 passes through the liquid crystal layer 100 without changing its polarization. Then, the light is blocked by the analyzer 130 attached to the upper substrate 2 to make a black state.

[0042] FIG. 18 shows the on state that the sufficient electric field is applied to the liquid crystal layer 100 by the

electrode 4 and 5, where the liquid crystal molecules 3 in the liquid crystal layer 100 are twisted spirally by 90° from the lower substrate 1 to the upper substrate 2, and the director of the liquid crystal layer 100 varies continuously. However, near the inner surfaces of two substrates 1, 2, the aligning force of the alignment layers 14, 140 is larger than the force due to the applied electric field, and the liquid crystal molecules stay vertically aligned.

[0043] The polarized light by the polarizer 13 passes through the liquid crystal layer 100 and its polarization is rotated by 90° according to the variation of the director of the liquid crystal layer 100. Therefore, the light passes through the analyzer 130 to make a white state.

[0044] FIG. 2 shows the structure of the electrodes and the alignment of the liquid crystal molecules of a VATN LCD according to an embodiment of the present invention. An ITO electrode 4 formed on the upper substrate 2 has an aperture 6. In absence of electric field, as shown in FIG. 1A, the liquid crystal molecules 3 stay in its vertically aligned state to show the black state. If the electric field applied to the liquid crystal layer by the electrodes 4 and 5, in most regions between the electrodes 4 and 5, the field direction is perpendicular to the substrates 1 and 2. However, near the aperture of the ITO electrode 4, the electric field is not completely perpendicular to the substrate 2. The electric field near the aperture is called the fringe field. The long axes of the liquid crystal molecules tend to be perpendicular to the field direction since the liquid crystal layer have negative dielectric anisotropy. Therefore, the directions of the long axes of the liquid crystal molecules are tilted and twisted near the fringe field.

[0045] An LCD according to embodiments of the present invention includes a TFT (thin film transistor) substrate and a common substrate. On the TFT substrate, a plurality of gate lines and data lines crossing each other are formed, and the gate lines and the data lines define pixel regions. On the common substrate, a common electrode having apertures and a black matrix which defines pixel regions are formed.

[0046] According to the first to the fourth embodiments of the present invention, a storage capacitor electrode is formed at the position corresponding to the aperture to shield the light leakage.

[0047] Now, the first embodiment of the present invention will be described with reference to FIGS. 3-5.

[0048] FIG. 3 is a layout view of a common substrate of a liquid crystal display according to the first embodiment of the present invention. FIG. 3 shows a pixel region, where a common electrode has apertures.

[0049] As shown in FIG. 3, a black matrix pattern 7 is formed along the boundary of a pixel region P, and a common electrode 6 is formed to cover the entire surface of the common substrate. The common electrode 6 has two longitudinally long linear apertures 15 which are spaced apart from and parallel to each other in a pixel region.

[0050] It is preferable that the width of the apertures 15 may be 3-15 μm , and the distance between the apertures 15 may be 8-50 μm . The width of 3-12 μm and the distance of 10-30 μm would be better.

[0051] FIG. 4 is a layout view of a TFT substrate according to the first embodiment of the present invention, and FIG. 5 is a sectional view of the TFT substrate taken along the line V-V' of FIG. 4.

[0052] As shown in FIGS. 4 and 5, a first and a second gate lines 81 and 82 spaced apart from each other are formed on a transparent glass substrate 20, and extend in the horizontal or transverse direction. Two storage capacitor electrodes 11 which are separated from and parallel to each other connected to both the gate lines 81 and 82 are formed on the substrate 20. The storage capacitor electrodes 11 are longitudinally lay, and they are located at the positions corresponding to the apertures 15 in the common electrode 6 on the common substrate.

[0053] A gate insulating layer 30 covers the storage capacitor electrodes 11 and the first and the second gate lines 81 and 82. A data line 9 perpendicular to the gate lines 81 and 82 is formed on the gate insulating layer 30. A TFT having a gate electrode which is a portion of the first gate line 81 is formed at a portion near the intersection of the first gate line 81 and the data line 9. A planarized passivation layer 40 is formed thereon, and a pixel electrode 10 overlapping the first and the second gate lines 81 and 82 and the data line 9 is formed on the passivation layer 40. An alignment layer 50 is formed thereon, and the alignment layer 50 may be rubbed or may not.

[0054] Although the linear apertures in the common electrode extend longitudinally in this embodiment, they may extend horizontally or obliquely.

[0055] FIGS. 6 and 7 are the respective layout views of the common and TFT substrates having horizontal apertures according to the second embodiment.

[0056] As shown in FIG. 6, a black matrix pattern 7 is formed along the boundary of a pixel region P, and a common electrode 6 is formed to cover the entire surface of the common substrate. The common electrode 6 has a plurality of horizontally long linear apertures 15 which are spaced apart from and parallel to each other in a pixel region.

[0057] The width and the distance of the apertures 15 may be the same as those of the first embodiment.

[0058] On the other hand, as shown in FIG. 7, a first and a second gate lines 81 and 82 which are separated from each other and extend horizontally and a branch 12 connecting the gate lines 81 and 82 extending in a vertical direction are formed on a transparent glass substrate 20. A plurality of storage capacitor electrodes 11 which are parallel to each other and to the gate lines 81 and 82 are formed on the substrate and connected to the branch 12. The storage capacitor electrodes 11 are transversely lay, and they are located at the positions corresponding to the apertures 15 in the common electrode 6 on the common substrate.

[0059] FIGS. 8-11 are layout views of common and TFT substrates having oblique apertures according to the third and the fourth embodiments. In the third and the fourth embodiment, the apertures make an angle of 0°-90° to the data line and the gate line.

[0060] As shown in FIGS. 8 and 10, a black matrix pattern 7 is formed along the boundary of a pixel region P, and a common electrode 6 is formed to cover the entire surface of the common substrate. The common electrode 6 has two obliquely long linear apertures 15 which are spaced apart from each other in a pixel region.

[0061] In the third embodiment shown in FIG. 8, each pixel has an aperture extending in the down left direction

from the up right edge and an aperture extending in the up left direction from the bottom right edge, and the end of apertures 15 reach the left central edge of the pixel. On the other hand, in the fourth embodiment illustrated in FIG. 10, each pixel has two parallel apertures extending in the up right or the down left direction.

[0062] The width and the distance of the apertures 15 may be the same as those of the first embodiment,

[0063] FIGS. 9 and 11 are the layout views of TFT substrates according to the third and the fourth embodiments of the present invention.

[0064] As shown in FIG. 9, a first and a second gate lines 81 and 82 which are separated from each other and extend horizontally and a branch 12 connecting the gate lines 81 and 82 extending in a vertical direction are formed on a transparent glass substrate 20. Two storage capacitor electrodes 11 on the substrate extend obliquely from the gate lines 81 and 82 to the left center of the pixel region P, and are connected to the branch 12.

[0065] A TFT substrate illustrated in FIG. 11 has a first and a second gate lines 81 and 82, a branch 12 and a data line 9 having the same shapes as those in the third embodiment shown in FIG. 9. Two storage capacitor electrodes 11 parallel to each other extend obliquely in the up right or the bottom left direction and are connected to the branch 12.

[0066] In the third and the fourth embodiments, as in the first embodiment, the position of the storage capacitor electrodes 11 are corresponding to the apertures 15 in the common electrode 6 on the common substrate to shield the light leakage due to a fringe field.

[0067] In the third and the fourth embodiments of the present invention, the alignment layers formed on the pixel electrode may be rubbed or may not. When the alignment layers are rubbed, the rubbing direction may make an angle of 0°-135° with respect to the direction of the linear aperture.

[0068] Next, the fifth embodiment of the present invention will be described. In the fifth embodiment, adjacent pixels have apertures extending different directions to widen the viewing angle.

[0069] FIG. 12 is a layout view of a common substrate according to the fifth embodiment.

[0070] As shown in FIG. 12, a black matrix pattern 7 is formed and defines a plurality of pixel regions corresponding to the red, green and blue color filters R, G and B. An ITO electrode 4 having a plurality of linear apertures 15 is formed thereon. The extending directions of the linear apertures of adjacent pixel regions are different from each other, i.e., horizontal apertures and vertical apertures are arranged alternately by pixel. For example, a red pixel region has vertical apertures and a green pixel region adjacent to the red pixel region has horizontal apertures.

[0071] It is assumed to display red color using this LCD. Then, the blue and the green pixels remain in their OFF state, and only the red pixels turn on. If the extending direction of the apertures of a first red pixel is horizontal, and the extending direction of the aperture of a second red pixel adjacent to the first red pixel is vertical.

[0072] Now the behaviors of the liquid crystal molecules are described with reference to FIGS. 13A and 13B in this case,

[0073] The linear apertures 15 of the ITO electrode 4 extends vertically in FIG. 13A, while the linear apertures 15 of the ITO electrode 4 extends horizontally in FIG. 13B.

[0074] Here, the liquid crystal molecules are left-handed when viewed from the bottom of the drawing sheet.

[0075] When the voltage is applied to the electrodes 4 and 5, the liquid crystal molecules tilt in the directions perpendicular to the direction of the electric field due to the voltage difference between the electrodes 4 and 5, as shown in FIG. 2. In addition, as shown in FIGS. 13A and 13B, the liquid crystal molecules rotate clockwise in xy plane.

[0076] The tilt directions of the liquid crystal molecules vary according to the extending directions of the apertures. Since the tilt directions of the molecules opposite each other with respect to an aperture are opposite, and there are two extending directions of the apertures, the number of the tilt direction is about four. on the Y axis in upper part twist to the right to the X axis, and those on the Y axis in lower part twist to the left to X axis due to the linear aperture formed along the Y axis.

[0077] Since the liquid crystal molecules tilt and rotate in four different directions, the viewing angles of up, down, left and right directions are equal and the gray inversion does not occur.

[0078] Now, the structures of the color filter and the TFT substrate according to the fifth embodiment are described more fully.

[0079] FIG. 14 is a layout view of a common substrate showing two adjacent pixels,

[0080] As shown in FIG. 14, a black matrix pattern 7 which defines pixel regions P1, P2 is formed on the substrate, and a common electrode 6 formed thereon.

[0081] The common electrode 6 has two vertical linear apertures 15 parallel to each other in the first pixel region P1, and has a plurality of horizontal linear apertures 15 parallel to each other in the second pixel region P2 adjacent to the first pixel region P1.

[0082] The width and the distance of the apertures may be the same as those of the first embodiment.

[0083] FIG. 15 is a layout view of a TFT substrate according to the fifth embodiment of the present invention. In a pixel region P1 corresponding to the pixel region P1 on the common substrate in FIG. 14, a first and a second gate lines 81 and 82 and two vertical storage capacitor electrodes 11 parallel to each other and connecting the gate lines 81 and 82 are formed as those in FIG. 4. In a pixel region P2, a branch 12 connecting two gate lines 81 and 82 extends parallel to a data line 9, and a plurality of storage capacitor electrodes 11 extend parallel to the gate lines 81 and 82 from the branch 12.

[0084] As all the above-described embodiments, the storage capacitor electrodes 11 are located at the positions corresponding to the apertures 15 in the common electrode 6.

[0085] The storage capacitor electrodes 11 overlaps a pixel electrode 10 to form storage capacitors, and play a role of a black matrix to prevent the light leakage caused by the disclination due to the apertures 15 in common electrode 6.

[0086] The apertures in adjacent pixel regions may have various shapes. FIGS. 16-19 are layout views of the sixth to the ninth embodiments having variously shaped apertures in adjacent pixel regions

[0087] An LCD according to the sixth embodiment shown in FIG. 16 has first pixels having apertures shown in FIG. 10 and second pixels having apertures of shapes which is the same as the apertures in the first pixels rotated by 180° with respect to the central point of the pixel. In horizontal direction, two kinds of pixels are arranged alternately, and in vertical direction, pixels in a column are the same kind. As a whole, the apertures form a chevron shape in the sixth embodiment. An LCD according to the seventh embodiment shown in FIG. 17 has the same arrangement in the horizontal direction, however, in the vertical direction, two kinds of pixels are arranged alternately as in the horizontal direction. In the seventh embodiment, the apertures form a chevron shape in a row, but when viewing adjacent rows, the apertures form X or diamond shapes.

[0088] An LCD according to the eighth embodiment shown in FIG. 18 has first pixels having apertures shown in FIG. 8 and the second pixels having apertures of shapes which is the same as the apertures in the first pixels rotated by 180° with respect to the central point of the pixel. In horizontal direction, two kinds of pixels are arranged alternately, and in vertical direction, pixels in a column are the same kind. As a whole, the apertures form an X or diamond shape. An LCD according to the ninth embodiment shown in FIG. 19 has the same arrangement in the horizontal direction, however, in the vertical direction, two kinds of pixels are arranged alternately as in the horizontal direction. In the ninth embodiment, the apertures form an X or diamond shape in a row.

[0089] According to the embodiments of the present invention, column shaped spacers made of metal or organic material may be used instead of ball shaped spacers since the ball shaped spacers may cause light leakage due to the disturbance of the liquid crystal molecules near the spacers.

[0090] FIG. 20 shows a sectional view of an LCD having spacers according to an embodiment of the present invention. A liquid crystal layer 40 is interposed between a substrate 10 having a TFT 30 and a substrate 20 having a color filter (not shown). The TFT 30 formed on the lower substrate 10 includes a gate electrode 31, a gate insulating layer 32 formed thereon, a semiconductor layer 33 formed on a portion of the gate insulating layer 32 over the gate electrode 31, source/drain electrodes 341, 342 formed on the semiconductor layer 33. A passivation layer 50 covers the entire surface of the substrate 10 having the TFT 30. A pixel electrode 60 is formed in the pixel region and electrically connected to the drain electrode 342 through a contact hole in the passivation layer 50. A spacer 100 made of a metal or an organic material is formed on the TFT.

[0091] In the embodiments of the present invention, the apertures are formed in the common electrode 6, however, the apertures can be formed in the pixel electrode 10. When the apertures are formed in the pixel electrode 10, the fringe field generated between the pixel electrode 10 and the common electrode 6 may be affected by the voltages applied to the data line 9, the gate lines 81 and 82 and the storage capacitor electrode 11. To remove the influence due to the voltage applied to those signal lines, it is preferable that the

thickness of the passivation layer **50** is equal to or more than $3\ \mu\text{m}$ by using organic insulating material.

[**0092**] In the embodiments of the present invention, although the storage capacitor electrodes **11** are connected to the gate lines **81** and **82**, the storage capacitor electrodes **11** may be connected to another signal sources.

[**0093**] According to the embodiments of the present invention, the liquid crystal molecules are tilted in the various directions due to the fringe field to have a wide viewing angle, and the storage capacitor electrodes prevents the light leakage near the fringe field.

[**0094**] In the drawings and specification, there have been disclosed typical preferred embodiments of the invention and, although specific terms are employed, they are used in a generic and descriptive sense only and not for purposes of limitation, the scope of the invention being set forth in the following claims.

What is claimed is:

1. A liquid crystal display comprising:
 - a first substrate including a common electrode; and
 - a second substrate opposite the first substrate, the second substrate including a pixel electrode located at a position corresponding to the common electrode and a storage capacitor electrode overlapping the pixel electrode,
 wherein one of the pixel electrode and the common electrode has an aperture and the storage capacitor electrode is located at a position corresponding to the aperture.
2. A liquid crystal display of claim 1, further comprising a liquid crystal layer having negative dielectric anisotropy and interposed between the first and the second substrates.
3. A liquid crystal display of claim 2, wherein the liquid crystal layer comprises a chiral nematic liquid crystal.
4. A liquid crystal display of claim 2, wherein the liquid crystal layer comprises a nematic liquid crystal including chiral dopant of 0.01-3.0 wt %.
5. A liquid crystal display of claim 2, further comprising two alignment layers formed on the first and the second substrates respectively and aligning the molecular axes of liquid crystal molecules in the liquid crystal layer in the direction perpendicular to the substrates.
6. A liquid crystal display of claim 5, wherein the alignment layers are not rubbed.
7. A liquid crystal display of claim 1, wherein the number of the apertures is equal to or more than two, and the apertures are linear.
8. A liquid crystal display of claim 7, wherein the width of the aperture is in the range of $3\text{-}15\ \mu\text{m}$.
9. A liquid crystal display of claim 8, wherein the distance between the apertures is $8\text{-}50\ \mu\text{m}$.
10. A liquid crystal display comprising:
 - a first substrate including a plurality of gate lines, a plurality of data lines, a plurality of pixel electrodes formed in pixel regions defined by the gate lines and the data lines and a plurality of storage capacitor electrodes overlapping the pixel electrodes to form storage capacitors; and
 - a second substrate opposite the first substrate, the second substrate including a common electrode having a plu-

rality of apertures located at positions corresponding to the storage capacitor electrodes.

11. A liquid crystal display of claim 10, further comprising a liquid crystal layer having negative dielectric anisotropy and interposed between the first and the second substrates.

12. A liquid crystal display of claim 11, wherein the liquid crystal layer comprises a chiral nematic liquid crystal.

13. A liquid crystal display of claim 11, wherein the liquid crystal layer comprises a nematic liquid crystal including 0.01-3.0 wt % of chiral dopant.

14. A liquid crystal display of claim 11, further comprising two alignment layers formed on the first and the second substrates respectively and aligning the molecular axes of liquid crystal molecules in the liquid crystal layer in the direction perpendicular to the substrates.

15. A liquid crystal display of claim 14, wherein the alignment layers are not rubbed.

16. A liquid crystal display of claim 10, wherein the number of the apertures in each pixel is equal to or more than two.

17. A liquid crystal display of claim 16, wherein the apertures are formed linearly and extend parallel to the data line.

18. A liquid crystal display of claim 16, wherein the apertures are formed linearly and extend parallel to the gate line.

19. A liquid crystal display of claim 16, wherein the apertures are formed linearly and make an angle of $0^\circ\text{-}90^\circ$ about the data line and the gate line.

20. A liquid crystal display of claim 19, wherein the apertures are parallel to each other.

21. A liquid crystal display of claim 20, further comprising two alignment layers formed on the first and the second substrates respectively and aligning the molecular axes of liquid crystal molecules in the liquid crystal layer in the direction perpendicular to the substrates.

22. A liquid crystal display of claim 21, wherein the alignment layers are rubbed.

23. A liquid crystal display of claim 22, wherein the rubbing direction of the alignment layers makes an angle of $0^\circ\text{-}135^\circ$ about the direction of the aperture.

24. A liquid crystal display of claim 23, wherein the width of the aperture is in the range of $3\text{-}15\ \mu\text{m}$.

25. A liquid crystal display of claim 24, wherein the distance between the apertures in a pixel region is in the range of $8\text{-}50\ \mu\text{m}$.

26. A liquid crystal display of claim 10, wherein the gate line and the storage capacitor electrode are connected to each other.

27. A liquid crystal display of claim 2, further comprising a spacer made of a metal or an organic material.

28. A liquid crystal display comprising:

- a first substrate including a plurality of gate lines, a plurality of data lines, a plurality of pixel electrodes formed in the pixel regions defined by the gate lines and the data lines, and a plurality, of storage capacitor electrodes overlapping the pixel electrodes to form storage capacitors, wherein the pixel electrodes have an aperture located at a position corresponding to the storage capacitor electrode; and

- a second substrate opposite the first substrate, the second substrate including a common electrode.

29. A liquid crystal display of claim 28, further comprising a liquid crystal layer having negative dielectric anisotropy and interposed between the first and the second substrates.

30. A liquid crystal display of claim 29, wherein the liquid crystal layer comprises a chiral nematic liquid crystal.

31. A liquid crystal display of claim 29, wherein the liquid crystal layer comprises a nematic liquid crystal including chiral dopant of 0.01-3.0 wt %.

32. A liquid crystal display of claim 28, further comprising two alignment layers formed on the first and the second substrates respectively and aligning the molecular axes of liquid crystal molecules in the liquid crystal layer in the direction perpendicular to the substrates.

33. A liquid crystal display of claim 32, wherein the alignment layers are not rubbed.

34. A liquid crystal display of claim 28, wherein the number of the apertures in each is equal to or more than two.

35. A liquid crystal display of claim 34, wherein the apertures are formed linearly and extend parallel to the data line.

36. A liquid crystal display of claim 34, wherein the apertures are formed linearly and extend parallel to the gate line.

37. A liquid crystal display of claim 34, wherein the apertures are formed linearly and make an angle of 0°-90° about the data line and the gate line.

38. A liquid crystal display of claim 37, wherein the apertures are parallel to each other.

39. A liquid crystal display of claim 38, further comprising two alignment layers formed on the first and the second substrates respectively and aligning the molecular axes of liquid crystal molecules in the liquid crystal layer in the direction perpendicular to the substrates.

40. A liquid crystal display of claim 39, wherein the alignment layers are rubbed.

41. A liquid crystal display of claim 40, wherein the rubbing direction of the alignment layers makes an angle of 0°-135° about the direction of the aperture.

42. A liquid crystal display of claim 34, wherein the width of the aperture is in the range of 3-15 μm .

43. A liquid crystal display of claim 42, wherein the distance between the apertures in a pixel region is in the range of 8-50 μm .

44. A liquid crystal display of claim 28, further comprising an organic insulating layer disposed between the gate line, the data line and the storage capacitor electrode and the pixel electrode.

45. A liquid crystal display of claim 44, wherein the thickness of the organic insulating layer is equal to or more than 3 μm .

46. A liquid crystal display of claim 46, further comprising a spacer made of a metal or an organic material.

47. A liquid crystal display comprising:

a first substrate including a plurality of gate lines, a plurality of data lines and a plurality of pixel electrodes formed in pixel regions defined by the gate lines and data lines; and

a second substrate opposite to the first substrate and including a common electrode,

wherein one of the pixel electrode and the common electrode has a linear aperture, and the apertures in adjacent pixel regions extend in different directions.

48. A liquid crystal display of claim 47, further comprising a storage capacitor electrode formed on the first substrate at the position corresponding to the aperture overlapping the pixel electrode to form a storage capacitor.

49. A liquid crystal display of claim 48, wherein the apertures in adjacent pixel regions are parallel to the gate lines and the gate lines respectively.

50. A liquid crystal display of claim 48, wherein the aperture in a pixel region makes an angle of 0°-90° about the data line and the gate line, and the apertures in adjacent pixel regions are symmetric to the boundary line of the adjacent pixel regions.

51. A liquid crystal display of claim 47, wherein the number of the apertures in each pixel is equal to or more than two.

52. A liquid crystal display of claim 51, wherein the width of the aperture is in the range of 3-15 μm .

53. A liquid crystal display of claim 52, wherein the distance between the apertures in a pixel region is in the range of 8-50 μm .

54. A liquid crystal display of claim 47, further comprising a liquid crystal layer having negative dielectric anisotropy and interposed between the first and the second substrates.

55. A liquid crystal display of claim 54, wherein the liquid crystal layer comprises a chiral nematic liquid crystal.

56. A liquid crystal display of claim 54, wherein the liquid crystal layer comprises a nematic liquid crystal including chiral dopant of 0.01-3.0 wt %.

57. A liquid crystal display of claim 54, further comprising two alignment layers formed on the first and the second substrates respectively and aligning the molecular axes of liquid crystal molecules in the liquid crystal layer in the direction perpendicular to the substrates.

58. A liquid crystal display of claim 54, wherein the alignment layers are not rubbed.

59. A liquid crystal display of claim 54, further comprising a spacer made of a metal or an organic material.

* * * * *

专利名称(译)	具有宽视角的液晶显示器		
公开(公告)号	US20010028414A1	公开(公告)日	2001-10-11
申请号	US09/877481	申请日	2001-06-08
[标]申请(专利权)人(译)	LYU JAE 金 KIM KYEONG 铉 LEE HEA RI 陈健MIN		
申请(专利权)人(译)	LYU JAE-JIN KIM KYEONG 铉 李HEA-RI 陈建民		
当前申请(专利权)人(译)	三星DISPLAY CO. , LTD.		
[标]发明人	LYU JAE JIN KIM KYEONG HYEON LEE HEA RI CHEN JIAN MIN		
发明人	LYU, JAE-JIN KIM, KYEONG-HYEON LEE, HEA-RI CHEN, JIAN-MIN		
IPC分类号	G02F1/1337 G02F1/13 G02F1/1333 G02F1/1335 G02F1/1343 G02F1/1362 G02F1/139		
CPC分类号	G02F1/133512 G02F1/1337 G02F1/133707 G02F1/134309 G02F1/134336 G02F2001/13712 G02F1/1393 G02F2001/134372 G02F2201/121 G02F2201/128 G02F1/137 G02F1/136213		
优先权	1019970021708 1997-05-29 KR 1019970040665 1997-08-25 KR		
其他公开文献	US6771344		
外部链接	Espacenet USPTO		

摘要(译)

孔径形成在液晶显示器的公共电极或像素电极中以形成边缘场。存储电容器电极形成在与孔对应的位置处，以防止由于边缘场引起的向错导致的漏光。孔径水平，垂直或倾斜地延伸。相邻像素区域中的孔可以具有不同的方向以加宽视角。

