



US008773622B2

(12) **United States Patent**
Kurokawa et al.

(10) **Patent No.:** **US 8,773,622 B2**
(45) **Date of Patent:** ***Jul. 8, 2014**

(54) **PHOTODETECTOR, LIQUID CRYSTAL DISPLAY DEVICE, AND LIGHT EMITTING DEVICE**

G02F 7/0007; G02F 7/004; G09G 2360/145; G09G 3/3413; G09G 2300/08; C08F 2/50; G01J 1/08; G01J 1/4228; G01J 5/0846; C09D 11/037; C09D 11/324

(75) Inventors: **Yoshiyuki Kurokawa**, Kanagawa (JP); **Takayuki Ikeda**, Kanagawa (JP)

USPC 349/110, 65, 69, 71, 106, 113, 138, 50, 349/199, 25, 28, 158, 61, 124, 193, 42, 43; 257/432, 84, E31.127, E33.077, 204, 257/294, 435, E31.121, E31.122, 443, 448; 315/169.3; 345/76, 91, 207, 212, 426, 345/87; 438/70; 250/208.1, 208.2; 430/270.1, 5; 348/273, 350; 359/891

(73) Assignee: **Semiconductor Energy Laboratory Co., Ltd.**, Atsugi-shi, Kanagawa-ken (JP)

See application file for complete search history.

(*) Notice: Subject to any disclaimer, the term of this patent is extended or adjusted under 35 U.S.C. 154(b) by 537 days.

This patent is subject to a terminal disclaimer.

(56) **References Cited**

U.S. PATENT DOCUMENTS

5,473,453 A 12/1995 Kurematsu
5,666,176 A 9/1997 Kurematsu

(Continued)

FOREIGN PATENT DOCUMENTS

CN 101075626 A 11/2007
EP 2 081 081 A1 7/2009

(Continued)

OTHER PUBLICATIONS

Chinese Office Action (Application No. 201010260696.3) Dated Apr. 3, 2014.

Primary Examiner — Thoi Duong

(74) Attorney, Agent, or Firm — Fish & Richardson P.C.

(21) Appl. No.: **12/855,336**

(22) Filed: **Aug. 12, 2010**

(65) **Prior Publication Data**

US 2011/0042766 A1 Feb. 24, 2011

(30) **Foreign Application Priority Data**

Aug. 21, 2009 (JP) 2009-191827

(51) **Int. Cl.**
G02F 1/1333 (2006.01)

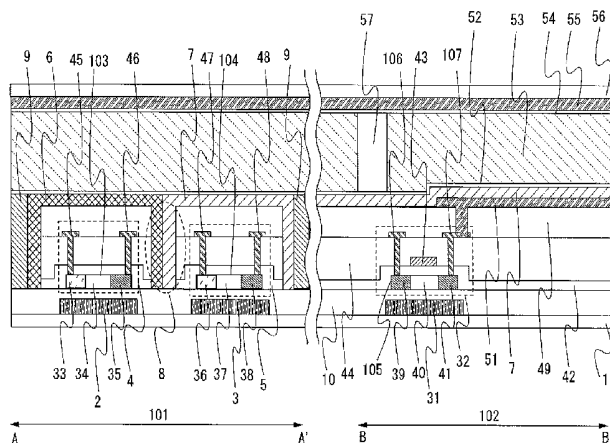
(52) **U.S. Cl.**
USPC **349/106**; 349/110

(58) **Field of Classification Search**
CPC H01L 27/14623; H01L 27/14621; H01L 27/146; H01L 2/1461; H01L 27/14645; H01L 27/14601; H01L 27/14625; H01L 27/3211; H01L 27/1462; H01L 29/78633; H01L 29/78696; H01L 31/0232; H01L 31/02327; H04N 5/374; G02F 1/133512; G02F 1/1368; G02F 1/133514; G02F 1/133; G02F 1/1333; G02F 1/1362; G02F 1/136209; G02F 2001/136222; G02F 2001/13312; G02F 2001/133302; G02F 2001/133521;

(57) **ABSTRACT**

One embodiment of the present invention includes a first light-blocking layer and a second light-blocking layer which are over a light-transmitting substrate, a first photodiode over the first light-blocking layer, a second photodiode over the second light-blocking layer, a first color filter covering the first photodiode, a second color filter covering the second photodiode, and a third light-blocking layer formed using the first color filter and the second color filter and disposed between the first photodiode and the second photodiode.

20 Claims, 14 Drawing Sheets



(56)

References Cited

U.S. PATENT DOCUMENTS

6,144,426 A 11/2000 Yamazaki et al.
 6,690,437 B2 2/2004 Yamazaki et al.
 6,747,289 B2 6/2004 Yamazaki et al.
 7,002,659 B1 2/2006 Yamazaki et al.
 7,430,025 B2* 9/2008 Okamoto et al. 349/56
 7,605,354 B2* 10/2009 Koyama 250/208.1
 7,622,785 B2 11/2009 Sasagawa et al.
 7,741,667 B2 6/2010 Jung
 7,825,998 B2* 11/2010 Chen et al. 349/12
 7,847,361 B2 12/2010 Kokusenya
 7,868,368 B2 1/2011 Park
 8,013,955 B2* 9/2011 Katoh et al. 349/106
 8,035,590 B2* 10/2011 Kakinuma et al. 345/88
 8,053,816 B2 11/2011 Arao et al.
 8,106,429 B2 1/2012 Kim
 8,129,809 B2 3/2012 Jang
 2002/0063518 A1 5/2002 Okamoto et al.
 2002/0107055 A1 8/2002 Yamazaki et al.

2006/0131598 A1 6/2006 Koh
 2006/0275944 A1 12/2006 Hyun
 2007/0113886 A1 5/2007 Arao et al.
 2007/0155083 A1 7/2007 Park
 2007/0210344 A1 9/2007 Arao et al.
 2009/0057725 A1 3/2009 Kim
 2009/0141004 A1 6/2009 Yamazaki
 2009/0161047 A1* 6/2009 Cho et al. 349/106
 2009/0325338 A1 12/2009 Jung
 2010/0007632 A1 1/2010 Yamazaki
 2010/0117991 A1 5/2010 Koyama et al.
 2011/0043735 A1* 2/2011 Kozuma et al. 349/106

FOREIGN PATENT DOCUMENTS

JP 05313153 A 11/1993
 JP 2005-010690 A 1/2005
 JP 2007-311664 A 11/2007
 WO 2008/044369 A1 4/2008

* cited by examiner

FIG. 1

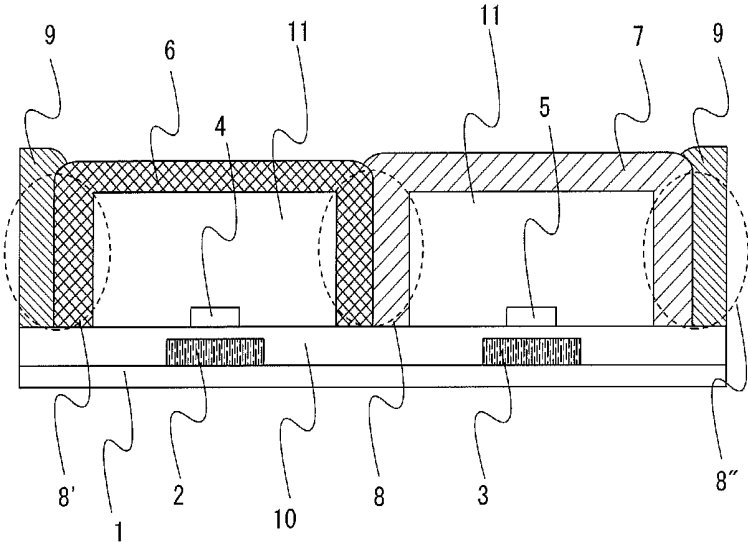


FIG. 2

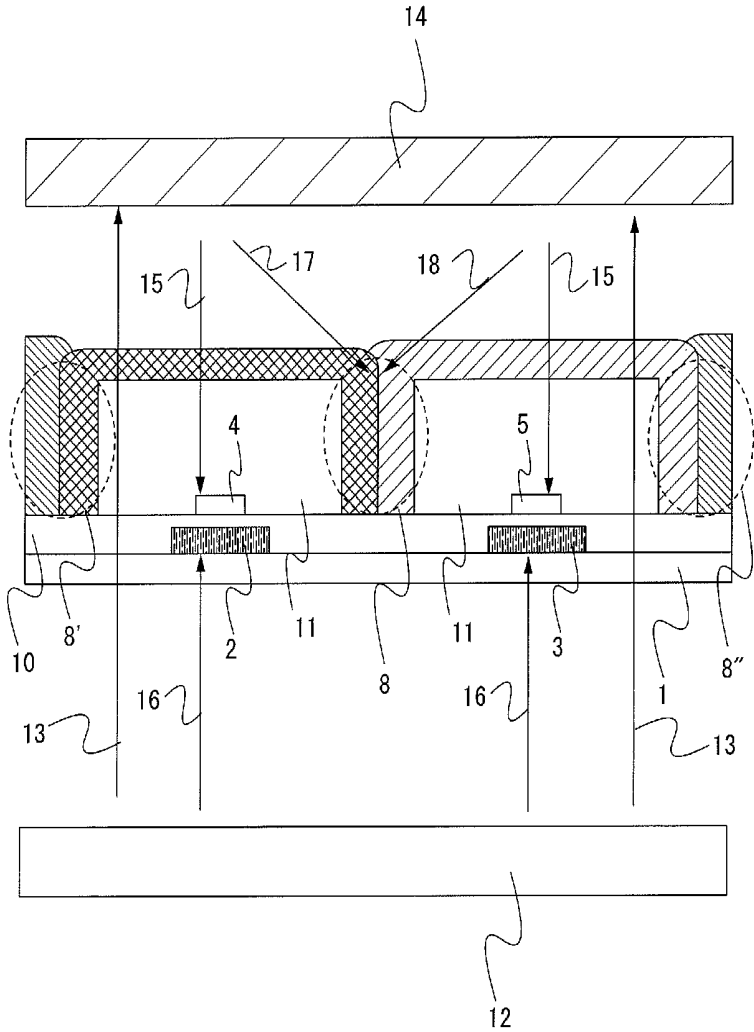


FIG. 3A

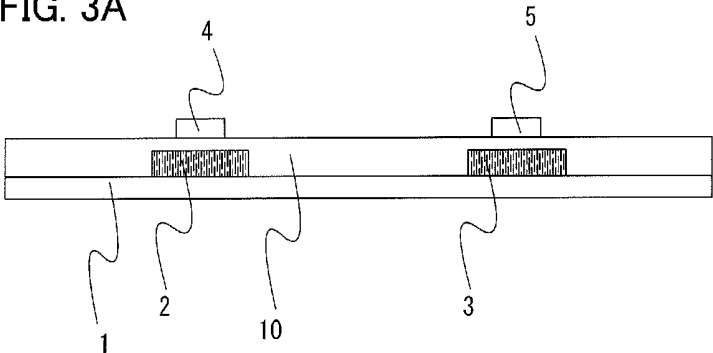


FIG. 3B

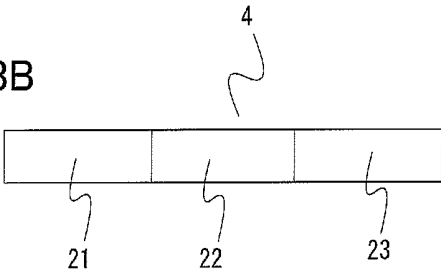
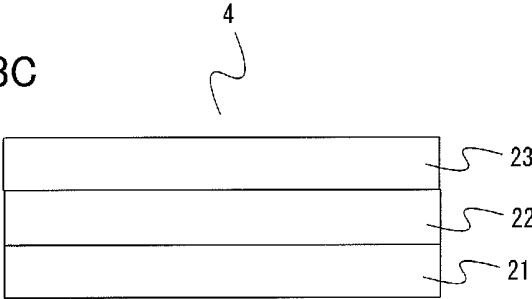


FIG. 3C



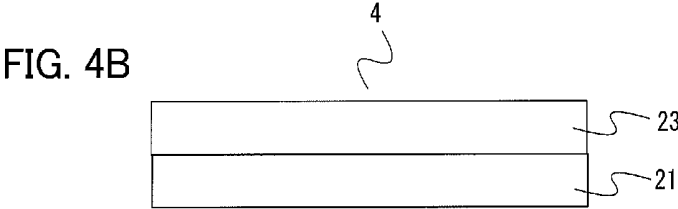
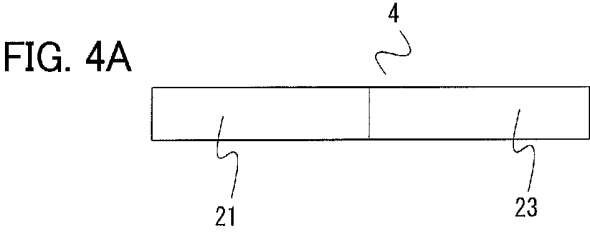


FIG. 5A

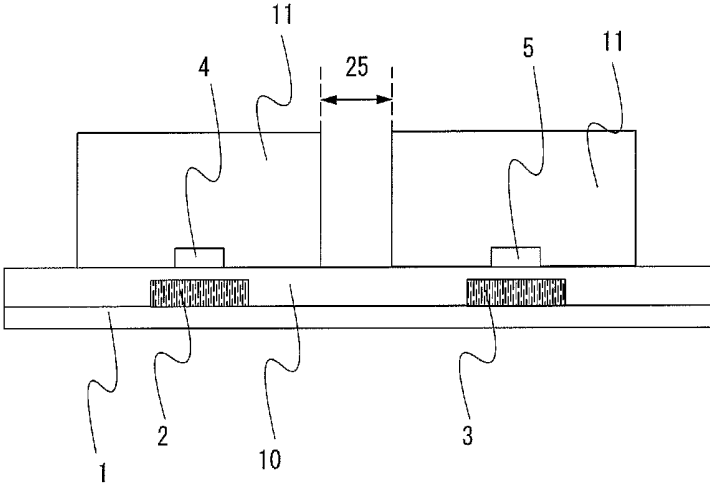


FIG. 5B

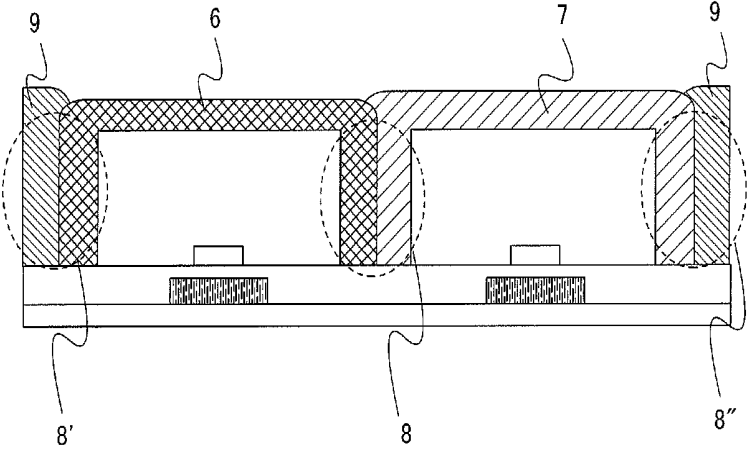


FIG. 6

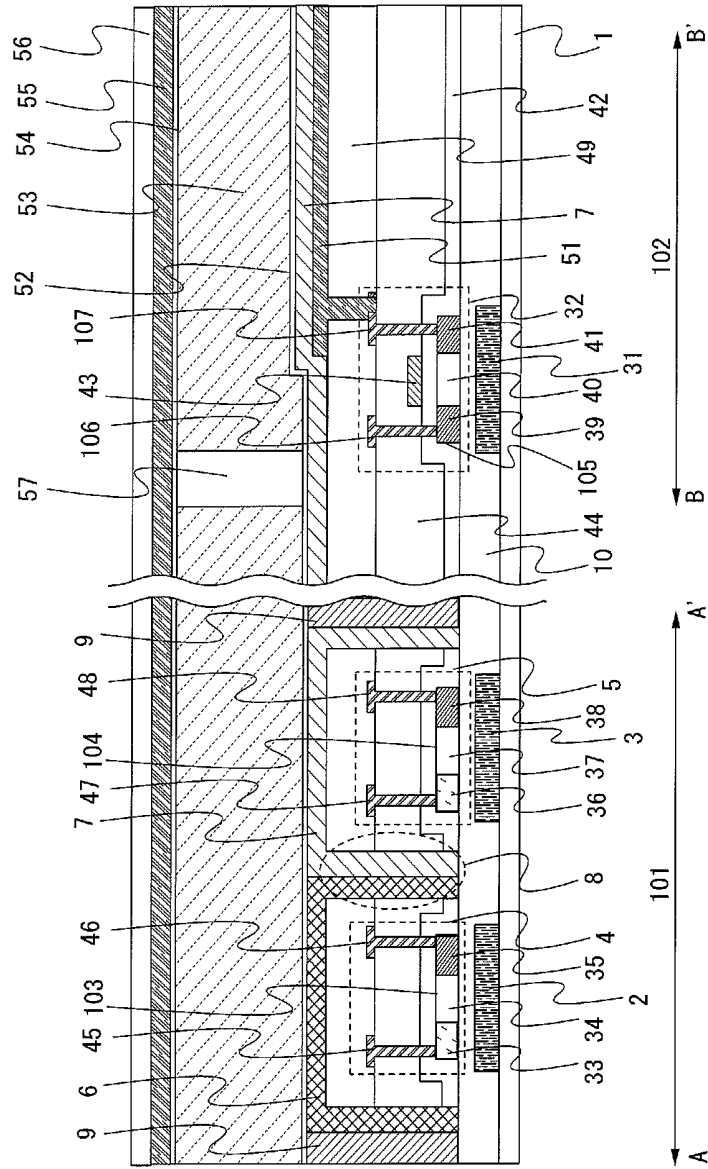
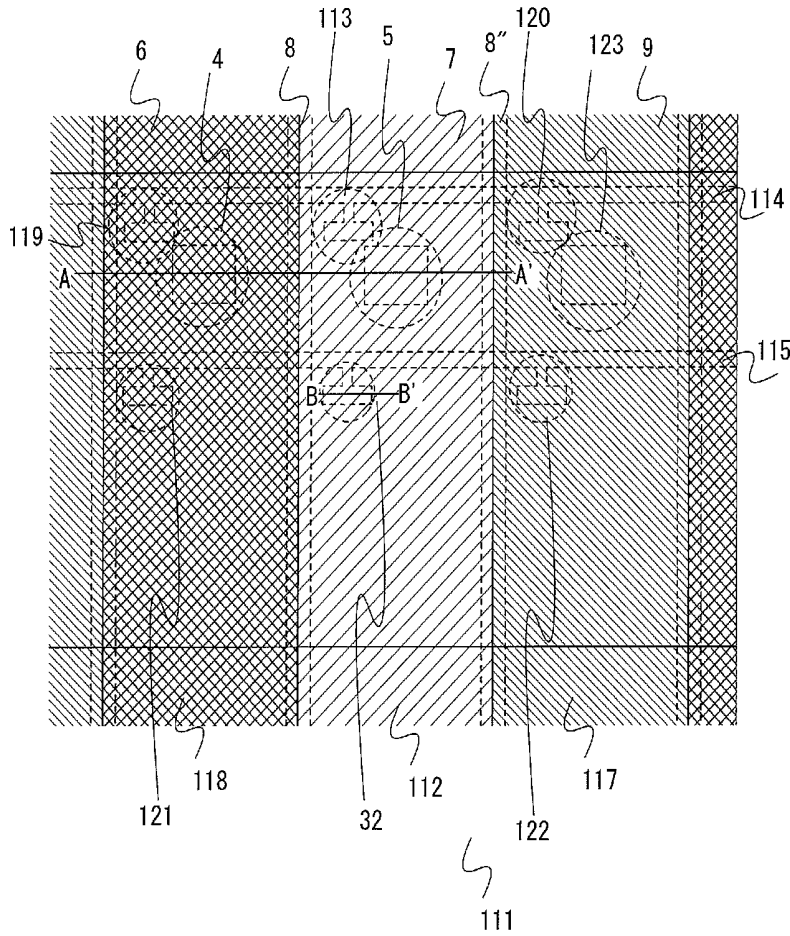


FIG. 7



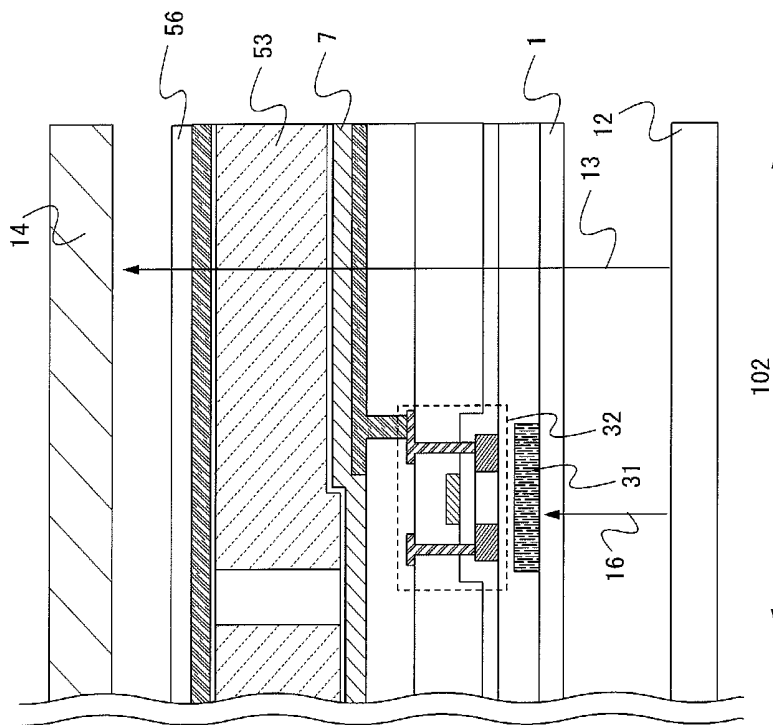


FIG. 8

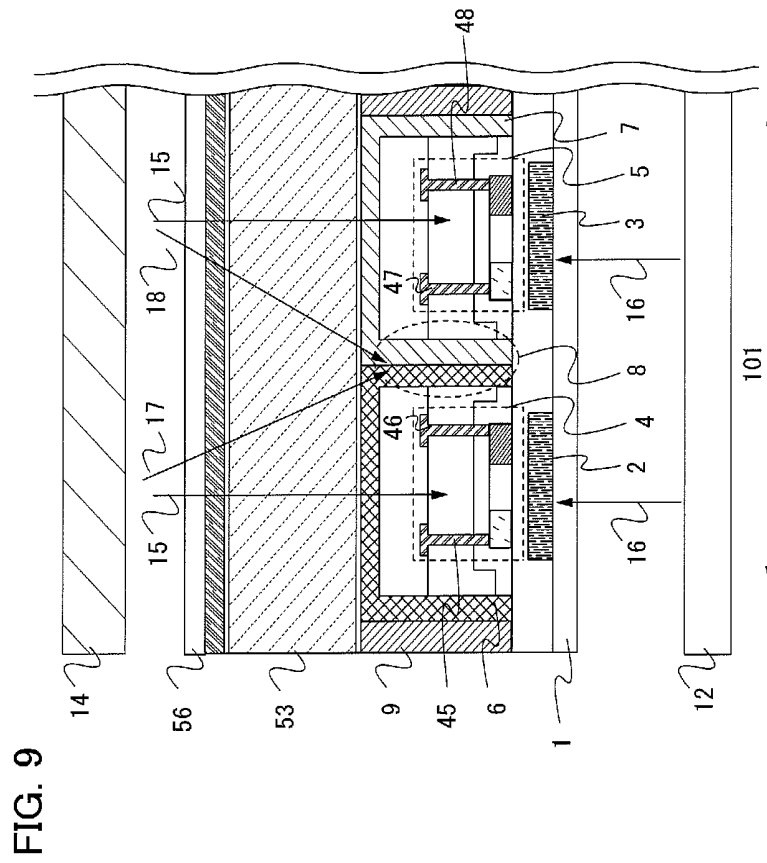
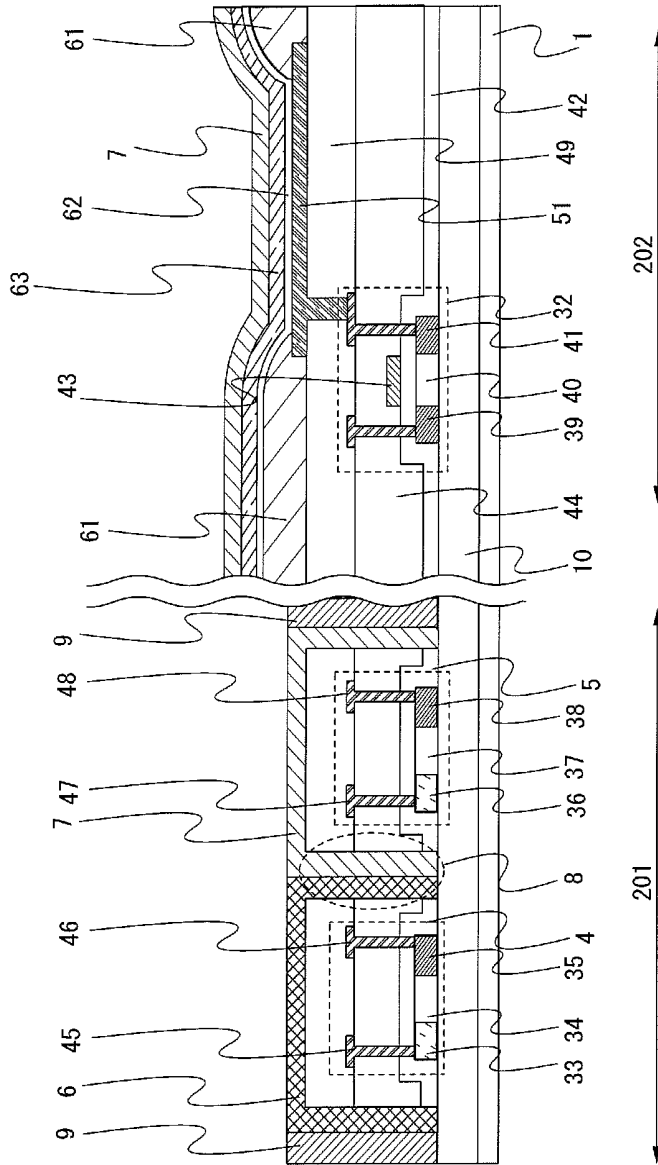


FIG. 10



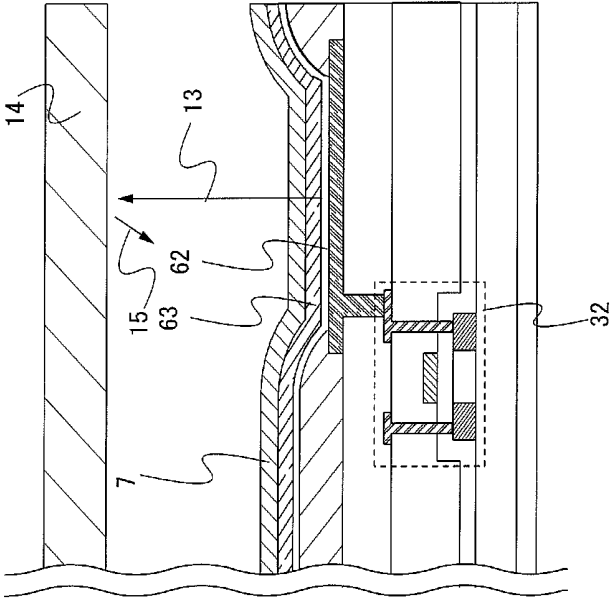


FIG. 11

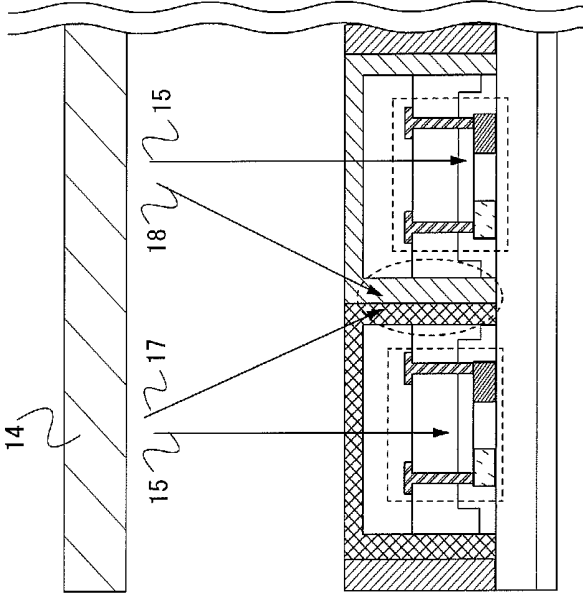


FIG. 12

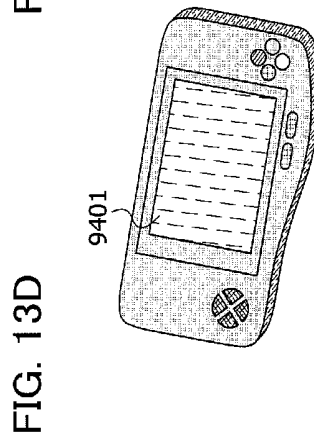
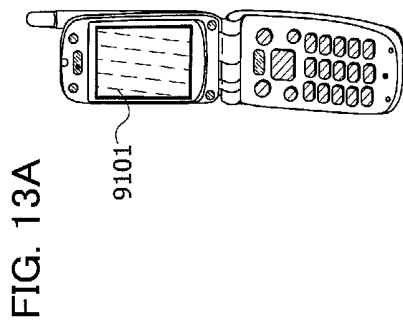
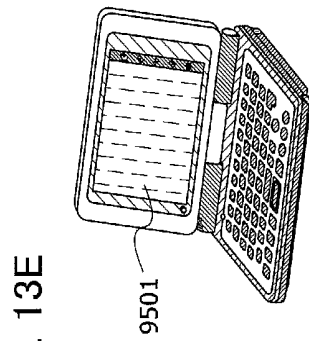
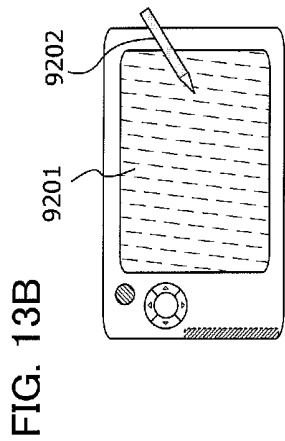
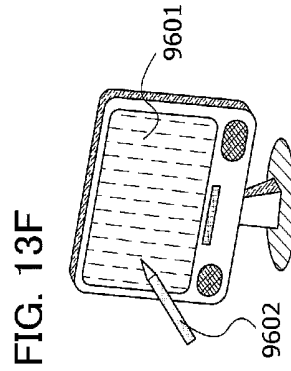
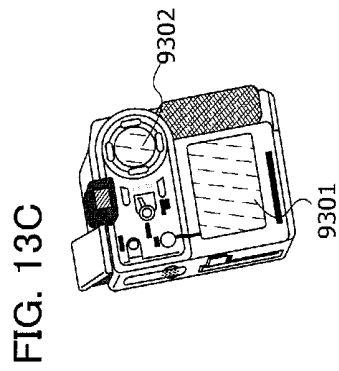
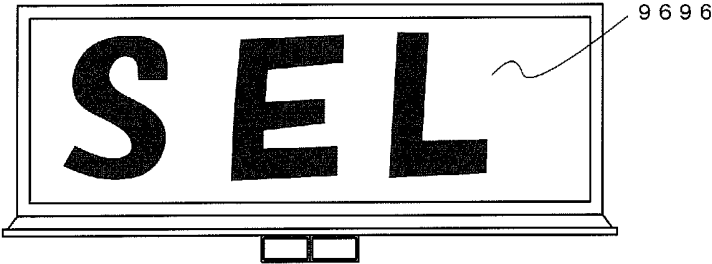


FIG. 14



PHOTODETECTOR, LIQUID CRYSTAL DISPLAY DEVICE, AND LIGHT EMITTING DEVICE

BACKGROUND OF THE INVENTION

1. Field of the Invention

The present invention relates to a photodetector including a photodiode, a liquid crystal display device including a photodiode, and a light-emitting device including a photodiode.

2. Description of the Related Art

Patent Document 1 discloses a liquid crystal display device having an input function using a photosensor. Specifically, the liquid crystal display device includes a switching element and a photoelectric conversion element over a light-transmitting substrate. The thickness of the light-transmitting substrate is 70 to 100 μm . The light-transmitting substrate having such a thickness prevents stray light from a backlight from entering the photoelectric conversion element.

REFERENCE

[Patent Document 1] Japanese Published Patent Application No. 2005-10690

SUMMARY OF THE INVENTION

However, it is difficult to prevent light from a backlight from entering photoelectric conversion element (a photodiode) by only making the light-transmitting substrate thin. Besides, part of light from an object (oblique light) enters not a desired photoelectric conversion element but a photoelectric conversion element in the adjacent pixel. Oblique light incidence lowers the light sensitivity of the photoelectric conversion element.

One embodiment of the present invention prevents light from a backlight from entering a photodiode and prevents oblique light from an object from entering not a desired photodiode but another photodiode.

First Mode of the present invention is a photodetector including a first light-blocking layer and a second light-blocking layer over a light-transmitting substrate; a first photodiode over the first light-blocking layer; a second photodiode over the second light-blocking layer; a first color filter covering the first photodiode; a second color filter covering the second photodiode; and a third light-blocking layer formed using the first color filter and the second color filter and disposed between the first photodiode and the second photodiode.

In the photodetector which is First Mode of the present invention, light from under the first photodiode is blocked by the first light-blocking layer, and light from under the second photodiode is blocked by the second light-blocking layer. In addition, oblique light from an object is blocked by the third light-blocking layer. The first photodiode and the second photodiode can accurately detect light to be detected; thus, the light sensitivity of the first photodiode and the second photodiode can be improved.

Second Mode of the present invention is a photodetector including a first light-blocking layer and a second light-blocking layer over a light-transmitting substrate; a light-transmitting insulating film over and in contact with the light-transmitting substrate, the first light-blocking layer, and the second light-blocking layer; a first photodiode over the first light-blocking layer with the light-transmitting insulating film interposed therebetween; a second photodiode over the second light-blocking layer with the light-transmitting insu-

lating film interposed therebetween; a first color filter covering the first photodiode; and a second color filter covering the second photodiode. A third light-blocking layer formed using the first color filter and the second color filter arranged side by side is formed between the first photodiode and the second photodiode. The third light-blocking layer is formed over and in contact with the light-transmitting insulating film. The third light-blocking layer formed over and in contact with the light-transmitting insulating film can reliably block oblique light.

First Mode and Second Mode of the present invention can each include a first reflecting layer and a second reflecting layer instead of the first light-blocking layer and the second light-blocking layer. Light from under the first photodiode and light from under the second photodiode are reflected off the first reflecting layer and the second reflecting layer, and thus are not detected by the first photodiode and the second photodiode. In addition, even when light from an object is not detected by the first photodiode or the second photodiode, the light from the object is easily detected by the first photodiode or the second photodiode because the light from the object is reflected off the first reflecting layer or the second reflecting layer.

Third Mode of the present invention is a liquid crystal display device including a first light-blocking layer and a second light-blocking layer over a first light-transmitting substrate; a first photodiode over the first light-blocking layer; a second photodiode over the second light-blocking layer; a first color filter covering the first photodiode; a second color filter covering the second photodiode; a third light-blocking layer formed using the first color filter and the second color filter and disposed between the first photodiode and the second photodiode; a liquid crystal layer over the first color filter and the second color filter; and a second light-transmitting substrate over the liquid crystal layer. Third Mode of the present invention includes a photodetection portion including a first light-blocking layer, a second light-blocking layer, a third light-blocking layer, a first photodiode, a second photodiode, a first color filter, and a second color filter; and a display portion including a liquid crystal layer. A display device with a touch panel is made by combining the photodetection portion and the display portion. Light from under the first photodiode and light from under the second photodiode are blocked by the first light-blocking layer and the second light-blocking layer, respectively. Further, oblique light from an object is blocked by the third light-blocking layer. The first photodiode and the second photodiode can accurately detect light to be detected; the light sensitivity of the first photodiode and the second photodiode can be improved.

Fourth Mode of the present invention is a liquid crystal display device including a first light-blocking layer and a second light-blocking layer over a first light-transmitting substrate; a light-transmitting insulating film over and in contact with the first light-transmitting substrate, the first light-blocking layer, and the second light-blocking layer; a first photodiode over the first light-blocking layer with the light-transmitting insulating film interposed therebetween; a second photodiode over the second light-blocking layer with the light-transmitting insulating film interposed therebetween; a first color filter covering the first photodiode; a second color filter covering the second photodiode; a liquid crystal layer over the first color filter and the second color filter; and a second light-transmitting substrate over the liquid crystal layer. A third light-blocking layer formed using the first color filter and the second color filter arranged side by side is formed between the first photodiode and the second photo-

diode. The third light-blocking layer is formed over and in contact with the light-transmitting insulating film. The third light-blocking layer formed over and in contact with the light-transmitting insulating film can reliably block oblique light.

Third Mode and Fourth Mode of the present invention can each include a first reflecting layer and a second reflecting layer instead of the first light-blocking layer and the second light-blocking layer. Thus, light from under the first photodiode and light from under the second photodiode are not detected and light from an object can be reliably detected.

In Third Mode and Fourth Mode of the present invention, the thickness of the second light-transmitting substrate can be 70 to 100 μm . Thus, multiple reflection in the second light-transmitting substrate can be prevented.

Fifth Mode of the present invention is a light-emitting device including a first photodiode, a second photodiode and a light-emitting layer over a substrate; and a first color filter or second color filter over the light-emitting layer. The first color filter covers the first photodiode. The second color filter covers the second photodiode. A light-blocking layer formed using the first color filter and the second color filter is disposed between the first photodiode and the second photodiode. A display device with a touch panel is made by combining a photodetector and a light-emitting device. Oblique light from an object is blocked by the light-blocking layer. The first photodiode and the second photodiode can accurately detect light to be detected; thus, the light sensitivity of the first photodiode and the second photodiode can be improved. Further, a backlight becomes unnecessary.

Sixth Mode of the present invention is a light-emitting device including an insulating film over a substrate; a first photodiode, a second photodiode and a light-emitting layer over the substrate; and a first color filter or second color filter over the light-emitting layer. The first color filter covers the first photodiode. The second color filter covers the second photodiode. A light-blocking layer formed using the first color filter and the second color filter arranged side by side is formed between the first photodiode and the second photodiode. The light-blocking layer is formed over and in contact with the insulating film. The light-blocking layer formed over and in contact with the insulating film can reliably block oblique light.

In each of Fifth Mode and Sixth Mode of the present invention, a first light-blocking layer and a second light-blocking layer can be provided over the substrate, the first photodiode can be formed over the first light-blocking layer with the insulating film interposed therebetween, and the second photodiode can be formed over the second light-blocking layer with the insulating film interposed therebetween. When the multiple reflection of light from the light-emitting layer occurs, light from under the first photodiode and light from under the second photodiode can be prevented from being detected by the first photodiode and the second photodiode, respectively.

Fifth Mode and Sixth Mode of the present invention can each include a first reflecting layer and a second reflecting layer instead of the first light-blocking layer and the second light-blocking layer. Thus, light from under the first photodiode and light from under the second photodiode are not detected and light from an object can be reliably detected.

The light-blocking layer between the first photodiode and the second photodiode allows the light from an object to be accurately detected and improves the light sensitivity of the first photodiode and the second photodiode.

BRIEF DESCRIPTION OF THE DRAWINGS

FIG. 1 is a diagram showing Embodiment 1 which is one embodiment of the present invention.

FIG. 2 is a diagram showing Embodiment 1 which is one embodiment of the present invention.

FIGS. 3A to 3C are diagrams showing Embodiment 1 which is one embodiment of the present invention.

FIGS. 4A and 4B are diagrams showing Embodiment 1 which is one embodiment of the present invention.

FIGS. 5A and 5B are diagrams showing Embodiment 1 which is one embodiment of the present invention.

FIG. 6 is a diagram showing Embodiment 2 which is one embodiment of the present invention.

FIG. 7 is a diagram showing Embodiment 2 which is one embodiment of the present invention.

FIG. 8 is a diagram showing Embodiment 2 which is one embodiment of the present invention.

FIG. 9 is a diagram showing Embodiment 2 which is one embodiment of the present invention.

FIG. 10 is a diagram showing Embodiment 3 which is one embodiment of the present invention.

FIG. 11 is a diagram showing Embodiment 3 which is one embodiment of the present invention.

FIG. 12 is a diagram showing Embodiment 3 which is one embodiment of the present invention.

FIGS. 13A to 13F are diagrams showing Embodiment 4 which is one embodiment of the present invention.

FIG. 14 is a diagram showing Embodiment 5 which is one embodiment of the present invention.

DETAILED DESCRIPTION OF THE INVENTION

Embodiments of the present invention will be described below. However, the present invention can be carried out in many different modes, and it is easily understood by those skilled in the art that modes and details of the present invention can be modified in various ways without departing from the spirit and the scope of the present invention. Therefore, the present invention should not be construed as being limited to description of the embodiments. Note that the same reference numerals are commonly given to the same portions or portions having similar functions in different drawings, and repetitive description will be omitted in some cases. (Embodiment 1)

A photodetector which is one embodiment of the present invention will be described (FIG. 1). FIG. 1 is a cross-sectional view of the photodetector.

The photodetector which is one embodiment of the present invention includes a first light-blocking layer 2 and a second light-blocking layer 3 over a light-transmitting substrate 1, a first photodiode 4 over the first light-blocking layer, a second photodiode 5 over the second light-blocking layer 3, a first color filter 6 covering the first photodiode 4, and a second color filter 7 covering the second photodiode 5. The photodetector includes a third light-blocking layer 8 formed using the first color filter 6 and the second color filter 7 and disposed between the first photodiode 4 and the second photodiode 5.

The third light-blocking layer 8 is formed using the first color filter 6 and the second color filter 7 which are arranged side by side. In other words, the third light-blocking layer 8 is formed using one end of the first color filter 6 and one end of the second color filter 7 which overlap each other in a direction in which oblique light (described later) travels. A portion where the first color filter 6 and the second color filter 7 are arranged side by side, i.e. a portion where the first color filter 6 and the second color filter 7 overlap each other is the third light-blocking layer 8. In the third light-blocking layer 8, the first color filter 6 and the second color filter 7 can be in contact with each other.

A third light-blocking layer 8' formed using a third color filter 9 and the first color filter 6 can be provided on the other side of where the third light-blocking layer 8 between the first photodiode 4 and the second photodiode 5 is provided, and on the first photodiode 4 side. A portion where one end of the third color filter 9 and the other end of the first color filter 6 are arranged side by side is the third light-blocking layer 8'. In addition, a third light-blocking layer 8" formed using the third color filter 9 and the second color filter 7 can be provided on the second photodiode 5 side. A portion where one end of the third color filter 9 and the other end of the second color filter 7 are arranged side by side is the third light-blocking layer 8".

A first light-transmitting insulating film 10 can be provided so as to be over and in contact with the light-transmitting substrate 1, the first light-blocking layer, and the second light-blocking layer. The first photodiode 4 can be formed over the first light-blocking layer with the first light-transmitting insulating film 10 interposed therebetween. The second photodiode 5 can be formed over the second light-blocking layer with the first light-transmitting insulating film 10 interposed therebetween. The third light-blocking layer 8 can be formed so as to be in contact with the first light-transmitting insulating film 10.

A second light-transmitting insulating film 11 can be formed over the first light-transmitting insulating film 10, the first photodiode 4, and the second photodiode 5. The first color filter 6 can be formed over the first photodiode 4 with the second light-transmitting insulating film 11 interposed therebetween. The second color filter 7 can be formed over the second photodiode 5 with the second light-transmitting insulating film 11 interposed therebetween. When the second light-transmitting insulating film 11 is formed, the third light-blocking layer 8 is formed so as to fill a groove in the second light-transmitting insulating film 11.

A method of detecting light will be described below (FIG. 2). Light 13 emitted from a backlight 12 below the light-transmitting substrate 1 passes through the light-transmitting substrate 1 and the first color filter 6 or the second color filter 7 and is reflected off an object 14. A reflected light 15 is detected by the first photodiode 4 or the second photodiode 5. Detected light is extracted via an extracting electrode (not illustrated) of the first photodiode 4 or second photodiode 5 to be an electric signal.

Part of the light 13 from the backlight 12 becomes light 16 heading to the first photodiode 4 and the second photodiode 5. However, the light 16 is blocked by the first light-blocking layer 2 and the second light-blocking layer 3. Therefore, the light 16 does not enter the first photodiode 4 and the second photodiode 5 and hence is not detected, while in a structure in Patent Document 1, it is possible that the light 16 is detected by the first photodiode 4 and the second photodiode 5 because the first light-blocking layer 2 and the second light-blocking layer 3 are not provided. Further, the multiple reflection of light from the backlight 12 which occurs in the light-transmitting substrate 1 does not cause the light to enter and to be detected by the first photodiode 4 and the second photodiode 5 because of the first light-blocking layer 2 and the second light-blocking layer 3.

Part of reflected light from the object 14 becomes oblique light 17 and oblique light 18. Each of the oblique light 17 and the oblique light 18 is oblique light. The oblique light 17 heads to the second photodiode 5 obliquely from above the second photodiode 5. The oblique light 18 heads to the first photodiode 4 obliquely from above the second photodiode 5. However, the oblique light 17 is blocked by the third light-blocking layer 8. Thus, the oblique light 17 does not enter the second photodiode 5, and hence is not detected. Further, the

oblique light 18 is blocked by the third light-blocking layer 8. Thus, the oblique light 18 does not enter the first photodiode 4, and hence is not detected. Meanwhile, in the structure in Patent Document 1, the third light-blocking layer 8 is not provided, so that the oblique light 17 is detected by the second photodiode 5 and the oblique light 18 is detected by the first photodiode 4.

The third light-blocking layer 8 between the first photodiode 4 and the second photodiode 5 is formed using the first color filter 6 and the second color filter 7 which are arranged side by side. The third light-blocking layer 8 can be formed using a metal film or a resin film that has a black material dispersed or black fine particles dispersed. In that case, however, the number of types of the material for the third light-blocking layer 8 is increased, causing the increase in the number of steps for making the third light-blocking layer 8. For one embodiment of the present invention, the third light-blocking layer is formed using the first color filter 6 and the second color filter 7 which are arranged side by side, so that the number of types of material and the number of fabrication steps are not increased. In addition, the light 13 can be colored by the first color filter 6, the second color filter 7, and the third color filter 9, allowing the photodetector to be used as a color sensor.

The first photodiode 4 and the second photodiode 5 are formed over and in contact with the first light-transmitting insulating film 10, and the third light-blocking layer is formed over and in contact with the first light-transmitting insulating film 10, whereby the oblique lights 17 and 18 are reliably blocked.

The first light-blocking layer 2 and the second light-blocking layer 3 can be a first reflecting layer 2 and a second reflecting layer 3. In this case, the light 16 from the backlight 12 is reflected off the first reflecting layer 2 and the second reflecting layer 3, and hence is not detected by the first photodiode 4 and the second photodiode 5.

Further, even when the light 15 from the object 14 has not been detected by the first photodiode 4 or the second photodiode 5, the light is reflected off the first reflecting layer 2 or the second reflecting layer 3, allowing the light from the object 14 to be detected more easily by the first photodiode 4 or the second photodiode 5.

The elements of the photodetector will be described below.

(1) The Light-Transmitting Substrate 1

The light-transmitting substrate 1 transmits visible light and preferably has a thickness of 10 to 200 μm . For example, a plastic substrate that has flexibility and transmits visible light, or a light-transmitting substrate made of inorganic material, which transmits visible light can be used. Examples of the material for the plastic substrate include polyester typified by polyethylene terephthalate (PET); polyether sulfone (PES); polyethylene naphthalate (PEN); polycarbonate (PC); polyether ether ketone (PEEK); polysulfone (PSF); polyetherimide (PEI); polyarylate (PAR); polybutylene terephthalate (PBT); polyimide; acrylonitrile butadiene styrene resin; poly vinyl chloride; polypropylene; poly vinyl acetate; and acrylic resin. Examples of the substrate made of inorganic material include glass substrates and quartz substrates.

(2) The First Light-Blocking Layer 2 and the Second Light-Blocking Layer 3

The first light-blocking layer 2 prevents the light 16 from the backlight 12 from entering the first photodiode 4. The second light-blocking layer 3 prevents the light 16 from the backlight 12 from entering the second photodiode 5. The first light-blocking layer 2 and the second light-blocking layer 3 can be island-shaped. The first light-blocking layer 2 and the

second light-blocking layer **3** are formed using a light-blocking material, by sputtering, CVD, or coating. For example, a material mainly containing chromium, resin containing a carbon black, or resin containing a black pigment such as titanium lower oxide whose oxidation number is smaller than that of titanium dioxide can be used as a light-blocking material. In the case where the first light-blocking layer **2** and the second light-blocking layer **3** are used as reflecting layers, they are formed using aluminum or the like.

(3) The First Photodiode **4** and the Second Photodiode **5**

The first photodiode **4** and the second photodiode **5** detect the light **15** from the object **14**. The first photodiode **4** and the second photodiode **5** are PIN or PN diodes. The first photodiode **4** and the second photodiode **5** are formed using semiconductor films. A PIN diode includes a region of p-type conductivity (p-type layer), a region of i-type conductivity (i-type layer), and a region of n-type conductivity (n-type layer). A PN diode includes a p-type layer and an n-type layer. A p-type layer, an n-type layer, an i-type layer are formed using films made of semiconductor such as silicon or formed using oxide semiconductor films containing ZnO or the like. The semiconductor film can have any of amorphous, microcrystalline, crystalline, and single crystalline structures.

(4) The First Color Filter **6**, the Second Color Filter **7**, and the Third Color Filter **9**

The colors of the first color filter **6**, the second color filter **7**, and the third color filter **9** are different, and each can be any of red, blue, and green. These color the light **13** from the backlight. A colored light is reflected off the object **14** to be the light **15**. The light **15** passes through the first color filter **6** or the second color filter **7**, and then is detected by the first photodiode **4** or the second photodiode **5**. The first color filter **6**, the second color filter **7**, and the third color filter **9** are formed in island shapes. The first color filter **6** is formed so as to cover the top surface and the sides of the first photodiode **4**, and the second color filter **7** is formed so as to cover the top surface and the sides the second photodiode **5**.

The first color filter **6**, the second color filter **7**, and the third color filter **9** can be selectively formed by photolithography and etching, after being coated with an organic resin such as a polyimide-based resin and an acrylic-based resin in which pigment is dispersed. Alternatively, the first color filter **6**, the second color filter **7**, and the third color filter **9** can be selectively formed by a droplet discharge method such as an inkjet method.

(5) The Third Light-Blocking Layer **8**

The third light-blocking layer **8** prevents the oblique lights **17** and **18** included in a reflected light from the object **14** from being detected by the second photodiode **5** and the first photodiode **4**. The third light-blocking layer **8** between the first photodiode **4** and the second photodiode **5** is formed, as described above, using the first color filter **6** and the second color filter **7** arranged side by side. After one of the first color filter **6** and the second color filter **7** is selectively formed, the other one of the first color filter **6** and the second color filter **7** is selectively formed such that the first color filter **6** and the second color filter **7** are arranged side by side.

(6) The First Light-Transmitting Insulating Film **10** and the Second Light-Transmitting Insulating Film **11**

The first light-transmitting insulating film **10** prevents alkali metal such as Na or alkaline earth metal contained in the light-transmitting substrate **1** from being diffused into the first photodiode **4** and the second photodiode **5** and adversely affecting the characteristics. The first light-transmitting insulating film **10** is formed using an insulating material such as silicon oxide, silicon nitride, silicon oxynitride, or silicon nitride oxide, by CVD, sputtering, or the like. The second

light-transmitting insulating film prevents alkali metal such as Na or alkaline earth metal from outside from being diffused into the first photodiode **4** and the second photodiode **5** and adversely affecting the characteristics. Each of the first light-transmitting insulating film **10** and the second light-transmitting insulating film **11** is a single-layer or multilayer film of any of the following films: a silicon oxide film; a silicon oxynitride film; a silicon nitride oxide film; an organic resin film; and the like, formed by plasma CVD, sputtering, or the like.

A method of fabricating the photodetector will be described below.

A light-blocking film is formed using a light-blocking material over the light-transmitting substrate **1**, by sputtering, CVD, or coating (not illustrated). The light-blocking film is processed by photolithography and etching, forming the first light-blocking layer **2** and the second light-blocking layer **3** (FIG. 3A). The first light-blocking layer **2** and the second light-blocking layer **3** can be formed over the light-transmitting substrate **1**, by selectively applying a light-blocking material, using a droplet discharge method, the light-transmitting substrate **1**. A light-transmitting insulating film is formed over the light-transmitting substrate **1**, and the first light-blocking layer **2** and the second light-blocking layer **3** can be formed over the insulating film.

In the case of the first light-blocking layer **2** and the second light-blocking layer **3** are used as the first reflecting layer and the second reflecting layer, the first reflecting layer and the second reflecting layer are formed as follows: a reflecting film of aluminum or the like is formed by sputtering, CVD, or coating and processed by photolithography and etching.

The first light-transmitting insulating film **10** is formed over the light-transmitting substrate **1**, the first light-blocking layer **2**, and the second light-blocking layer **3** by sputtering, CVD, or coating (FIG. 3A). The first light-transmitting insulating film **10** can be a single-layer or multilayer film.

The first photodiode **4** and the second photodiode **5** are formed over the first light-transmitting insulating film **10** (FIG. 3A).

The first photodiode **4** and the second photodiode **5** are PIN diodes or PN diodes. The PIN diodes can be lateral diodes (FIG. 3B) or vertical diodes (FIG. 3C). Similarly, the PN diodes can be lateral diodes (FIG. 4A) or vertical diodes (FIG. 4B). The lateral diode is formed as follows: a p-type layer **21**, an i-type layer **22**, and an n-type layer **23** are formed in the semiconductor film by ion doping or the like. The vertical diode is formed in the following order: the p-type layer **21** is formed using a p-type semiconductor film, the i-type layer **22** is formed using an i-type semiconductor film, and the n-type layer **23** is formed using an n-type semiconductor film. It is also acceptable that the vertical diode is formed in the following order: the n-type layer **23** is formed, the i-type layer **22** is formed, and the p-type layer **21** is formed. Each of the p-type layer **21** and the n-type layer **23** is provided with an extracting electrode (not illustrated).

A light-transmitting insulating film is formed over the first light-transmitting insulating film **10**, the first photodiode **4**, and the second photodiode **5** (not illustrated). The second light-transmitting insulating film **11** is formed by processing the insulating film by photolithography and etching (FIG. 5A). A space **25** is made adequately large because the first color filter **6** and the second color filter **7** are arranged side by side between the first photodiode **4** and the second photodiode **5** to form the third light-blocking layer.

After an application of an organic resin in which pigment is dispersed, the organic resin is processed by photolithography and etching to form the first color filter **6**. Next, after an

application of an organic resin in which pigment of a color different from that of the first color filter 6 is dispersed, the organic resin is processed by photolithography and etching to form the second color filter 7. The first color filter 6 and the second color filter 7 are arranged side by side between the first photodiode 4 and the second photodiode 5 to form the third light-blocking layer 8. Lastly, after an application of an organic resin in which pigment of a color different from that of the first color filter 6 and the second color filter 7 is dispersed, the organic resin is processed by photolithography and etching to form the third color filter 9. The first color filter 6 and the third color filter 9 are arranged side by side to form the light-blocking layer 8'. The second color filter 7 and the third color filter 9 are arranged side by side to form the third light-blocking layers 8'' (FIG. 5B). The first color filter 6, the second color filter 7, and the third color filter 9 can be formed by a droplet discharge method such as an inkjet method without photolithography and etching. The photodetector can be fabricated in such a manner.

(Embodiment 2)

A liquid crystal display device which is one embodiment of the present invention will be described (FIG. 6). FIG. 6 is a cross-sectional view of the liquid crystal display device.

The liquid crystal display device which is one embodiment of the present invention includes the first light-blocking layer 2 and the second light-blocking layer 3 which are over the first light-transmitting substrate 1, the first photodiode 4 over the first light-blocking layer 2, the second photodiode 5 over the second light-blocking layer 3, the first color filter 6 covering the first photodiode 4, and the second color filter 7 covering the second photodiode 5. The liquid crystal display device includes the third light-blocking layer 8 formed using the first color filter 6 and the second color filter 7, between the first photodiode 4 and the second photodiode 5. Further, the liquid crystal display device includes a liquid crystal layer 53 over the first color filter 6 and the second color filter 7, and a second light-transmitting substrate 56 over the liquid crystal layer 53.

The liquid crystal display device in FIG. 6 includes a photodetection portion 101 and a display portion 102.

The photodetection portion 101 has the same structure as the photodetector in Embodiment 1. The first photodiode 4 and the second photodiode 5 are lateral PIN diodes. It is also acceptable that the first photodiode 4 and the second photodiode 5 are vertical diodes. Further it is also acceptable that the first photodiode 4 and the second photodiode 5 are PN diodes.

The first photodiode 4 includes a semiconductor layer 103 including a p-type layer 33, an i-type layer 34, and an n-type layer 35; and electrodes 45 and 46. The second photodiode 5 includes a semiconductor layer 104 including a p-type layer 36, an i-type layer 37, and an n-type layer 38; and electrodes 47 and 48.

The electrodes 45 and 46 are formed over a light-transmitting insulating film 44, and are connected to the semiconductor layer 103 via contact holes formed in a light-transmitting insulating film 42 and the light-transmitting insulating film 44. The electrodes 47 and 48 are formed in a similar manner.

A light-transmitting insulating film 49 is formed over the light-transmitting insulating film 44 and the electrodes 45 to 48. The first color filter 6, the second color filter 7, and the third color filter 9 are formed over the light-transmitting insulating film 49. The light-transmitting insulating films 42, 44, and 49 correspond to the second light-transmitting insulating film 11 in Embodiment 1.

As in Embodiment 1, the first light-blocking layer 2 is formed below the first photodiode 4. The second light-blocking layer 3 is formed below the second photodiode 5. As in

Embodiment 1, the first light-blocking layer 2 and the second light-blocking layer 3 can be the first reflecting layer 2 and the second reflecting layer 3.

Further, as in Embodiment 1, the third light-blocking layer 8 formed using the first color filter 6 and the second color filter 7 is formed between the first photodiode 4 and the second photodiode 5. The third light-blocking layer 8 is formed using the first color filter 6 and the second color filter 7 which are arranged side by side. In other words, the third light-blocking layer 8 is formed using one end of the first color filter 6 and one end of the second color filter 7 which overlap each other in a direction in which oblique light travels. A portion where the first color filter 6 and the second color filter 7 are arranged side by side, i.e. a portion where the first color filter 6 and the second color filter 7 overlap each other is the third light-blocking layer 8. In the third light-blocking layer 8, the first color filter 6 and the second color filter 7 can be in contact with each other. The third light-blocking layer 8 is formed so as to fill a groove in the light-transmitting insulating films 42, 44, and 49. In addition, when the third light-blocking layer 8 is formed so as to be in contact with the first light-transmitting insulating film 10, oblique light from an object is not detected by the first photodiode 4 or the second photodiode 5.

The display portion 102 includes, over the light-transmitting substrate (the first light-transmitting substrate) 1, a light-blocking layer 31, a transistor 32 which is over the light-blocking layer 31, a pixel electrode 51 connected to the transistor 32, and the second color filter 7 which is over the pixel electrode 51.

The display portion 102 includes an alignment film 52, the liquid crystal layer 53, an alignment film 54, a counter electrode 55, and the light-transmitting counter substrate (the second light-transmitting substrate) 56, over the first color filter 6, the second color filter 7, and the third color filter 9. A spacer 57 maintains a uniform thickness of the liquid crystal layer 53. Each of the light-transmitting substrate 1 and the second light-transmitting substrate 56 is provided with a polarizing film (not illustrated). Each of the light-transmitting substrate 1 and the second light-transmitting substrate 56 can also be provided with a retardation film or the like.

The transistor 32 is an n-type or p-type transistor and includes a semiconductor layer 105 including a source region 39, a channel formation region 40, and a drain region 41; the light-transmitting insulating film (gate insulating film) 42; a gate electrode 43; a source electrode 106; and a drain electrode 107. In addition, although the light-blocking layer 31 is formed below the transistor 32, the light-blocking layer can be formed over the transistor 32 instead. Although a top-gate transistor is shown in FIG. 6, a bottom-gate transistor can be used instead. In addition, a structure with an LDD or the like can be used.

The source electrode 106 and the drain electrode 107 are formed over the light-transmitting insulating film 44, and are connected to the semiconductor layer 105 via contact holes formed in the light-transmitting insulating films 42 and 44.

FIG. 7 shows a schematic top view of a pixel portion 111 of the liquid crystal display device. The photodetection portion 101 in FIG. 6 corresponds to a section A-A' in FIG. 7, and the display portion 102 corresponds to a section B-B' in FIG. 7. A pixel 112 in the pixel portion 111 includes at least the second color filter 7, the second photodiode 5, a transistor 113 which switches the second photodiode 5, and the transistor 32 connected to the pixel electrode 51. Similarly, a pixel 118 includes at least the first color filter 6, the first photodiode 4, a transistor 119, and a transistor 121; and a pixel 117 includes at least the third color filter 9, a photodiode 123, a transistor 120, and a transistor 122. Further, the pixel portion 111 is

provided with a first scan line **114** connected to the gates of the transistors **113**, **119**, and **120**; first to third signal lines (not illustrated) connected to the sources or drains of the transistors **113**, **119**, and **120**; a second scan line **115** connected to the gates of the transistors **32**, **121**, and **122**; and fourth to sixth signal lines (not illustrated) connected to the sources or drains of the transistors **32**, **121**, and **122**.

Further, the pixels **112**, **117**, and **118** can each have a storage capacitor.

The third light-blocking layer **8** is formed using the first color filter **6** and the second color filter **7** which are arranged sided by side. The third light-blocking layer **8** is formed in parallel to the first to sixth signal lines. The first to sixth signal lines are formed over or below the third light-blocking layer **8**.

A method of displaying and a method of detecting light will be described below (FIG. **8** and FIG. **9**). These are basically the same methods as those in Embodiment 1. The light **13** emitted from the backlight **12** which is below the light-transmitting substrate **1** passes through the light-transmitting substrate **1**, the second color filter **7**, and the liquid crystal layer **53** which are in the display portion **102**, and then the light **13** is reflected off the object **14**. At the time, the transistor **32** turns on or off, and the liquid crystal layer **53** is ready for transmitting light (FIG. **8**). The reflected light **15** passes through the liquid crystal layer **53** again and is detected by the second photodiode **5** in the photodetection portion **101**. A detected light is converted into an electrical signal by the second photodiode **5** and is extracted via the extracting electrodes **47** and **48** (FIG. **9**). Further, the light **13** emitted from the backlight **12** passes through the first color filter **6** and the liquid crystal layer **53** in the display portion **102**, and is reflected off the object **14**. The reflected light **15** passes through the liquid crystal layer **53** again and is detected by the first photodiode **4** in the photodetection portion **101**. The detected light is converted into an electrical signal by the first photodiode **4** and is extracted via the extracting electrodes **45** and **46** (FIG. **9**).

The oblique light **17** which is part of the reflected light from the object **14** is blocked by the third light-blocking layer **8**, and hence does not enter the second photodiode **5** and is not detected by the second photodiode **5**. In addition, the oblique light **18** is blocked by the third light-blocking layer **8**, and hence does not enter the first photodiode **4** and is not detected by the first photodiode **4**. The third light-blocking layer **8** can reliably block the oblique light **17** and the oblique light **18** (FIG. **9**).

The light **13** can be colored by the first color filter **6**, the second color filter **7**, and the third color filter **9**, which allows the photodetector to be used as a color sensor.

Note that as described in Embodiment 1, when the liquid crystal layer **53** which is over the photodetection portion **101** (over the first photodiode **4** or the second photodiode **5**) transmits light, the light passes through the first color filter **6** or the second color filter **7**, and the liquid crystal layer **53** which are over the first photodiode **4** or the second photodiode **5**, and is reflected off the object **14**. Then, the light is detected by the first photodiode **4** or the second photodiode **5**.

Part of the light **13** from the backlight **12** becomes the light **16** heading to the first photodiode **4**, the second photodiode **5**, and the transistor **32**. However, the light **16** is blocked by the first light-blocking layer **2**, the second light-blocking layer **3**, and the light-blocking layer **31** (FIG. **8** and FIG. **9**). Therefore, the light **16** does not enter the first photodiode **4**, the second photodiode **5**, and the transistor **32**, and hence is not detected. Further, the multiple reflection of light from the backlight **12** which occurs in the light-transmitting substrate

1 does not cause the light to enter the first photodiode **4** and the second photodiode **5** because of the first light-blocking layer **2** and the second light-blocking layer **3**.

The first light-blocking layer **2** and the second light-blocking layer **3** can be the first reflecting layer **2** and the second reflecting layer **3**. In this case, the light **16** from the backlight **12** is reflected off the first reflecting layer **2** and the second reflecting layer **3**, and hence is not detected by the first photodiode **4** and the second photodiode **5**.

Further, even when the light **15** from the object **14** has not been detected by the first photodiode **4** or the second photodiode **5**, the light is reflected off the first reflecting layer **2** or the second reflecting layer **3**, which allows the light from the object **14** to be detected more easily by the first photodiode **4** or the second photodiode **5**. Note that the transistor **32** does not need to detect light, and hence the light-blocking layer **31** does not serve as a reflecting layer.

In addition, preferably, the second light-transmitting substrate **56** has a thickness of 70 to 100 μm which prevents light which is due to multiple reflection from entering the second photodiode **5**, because it is possible that the multiple reflection of the light **13** from the backlight **12** occurs in the second light-transmitting substrate **56** and the light **13** is detected by the second photodiode **5**.

The elements of the display device will be described below. (1) The Light-Transmitting Substrate **1** and the Second Light-Transmitting Substrate **56**

The light-transmitting substrate **1** is the same as that in Embodiment 1. Further, as the second light-transmitting substrate **56**, a similar one to the light-transmitting substrate **1** can be used. Preferably, the second light-transmitting substrate **56** is formed to a thickness of 70 to 100 μm by mechanical polishing, chemical polishing, etching, or the like.

(2) The First Light-Blocking Layer **2**, the Second Light-Blocking Layer **3**, and the Light-Blocking Layer **31**

The first light-blocking layer **2** and the second light-blocking layer **3** are the same as those in Embodiment 1. In addition, the light-blocking layer **31** can be formed using similar one to the first light-blocking layer **2** and the second light-blocking layer **3**. In addition, when the first reflecting layer **2** and the second reflecting layer **3** are used as the first light-blocking layer **2** and the second light-blocking layer **3**, they are the same as those in Embodiment 1.

(3) The Transistors **32**, **121**, **122**, **113**, **119**, and **120**

The transistors **32**, **121**, and **122** are switches which allow or do not allow liquid crystal in the liquid crystal layer **53** to transmit light. The transistors **113**, **119**, and **120** turn on and off the second photodiode **5**, the first photodiode **4**, and the photodiode **123**, respectively. These transistors are the same as those described above. The semiconductor layers of these transistors are formed using films made of semiconductor such as silicon or oxide semiconductor films containing ZnO or the like. The semiconductor film can have any of amorphous, microcrystalline, crystalline, and single crystalline structures.

(4) The First Photodiode **4**, the Second Photodiode **5**, and the Photodiode **123**

The first photodiode **4** and the second photodiode **5** are the same as those in Embodiment 1. Further, the same photodiode as that used as the first photodiode **4** or the second photodiode **5** is used as the photodiode **123**.

(5) The First Color Filter **6**, the Second Color Filter **7**, and the Third Color Filter **9**

The first color filter **6**, the second color filter **7**, and the third color filter **9** are the same as those in Embodiment 1.

(6) The Third Light-Blocking Layer 8

The third light-blocking layer 8 is the same as that in Embodiment 1.

(7) The First Light-Transmitting Insulating Film 10, the Light-Transmitting Insulating Film 42, the Light-Transmitting Insulating Film 44, and the Light-Transmitting Insulating Film 49

The first light-transmitting insulating film 10 is the same as that in Embodiment 1. The light-transmitting insulating film 42 is a gate insulating film. The light-transmitting insulating film 42 is formed using an insulating material such as silicon oxide, silicon nitride, silicon oxynitride, and silicon nitride oxide. The light-transmitting insulating film 42 is formed by CVD, sputtering, thermal oxidation, thermal nitridation, plasma oxidation, plasma nitridation, coating, or the like. Preferably, the light-transmitting insulating film 44 and the light-transmitting insulating film 49 are flat insulating films. Each of the light-transmitting insulating film 44 and the light-transmitting insulating film 49 is a single-layer or multilayer film using any of a silicon oxide film, a silicon oxynitride film, a silicon nitride oxide film, an organic resin film, or the like. The light-transmitting insulating film 44 and the light-transmitting insulating film 49 are formed by CVD, sputtering, coating, or the like.

(8) The Pixel Electrode 51 and the Counter Electrode 55

The pixel electrode 51 and the counter electrode 55 are light-transmitting electrodes, and are formed using a material such as indium tin oxide (ITO), indium tin oxide containing silicon oxide (ITSO), or indium zinc oxide (IZO).

(9) The Alignment Films 52 and 54

The alignment films 52 and 54 align liquid crystal molecules in the liquid crystal layer 53 in one direction. The alignment films 52 and 54 are formed by coating, heat treatment, and rubbing. The alignment films 52 and 54 are formed using polyimide or the like. The alignment films 52 and 54 are not necessarily formed if there is another way to align the liquid crystal molecules in one direction.

(10) The Liquid Crystal Layer 53

The liquid crystal layer 53 is a switch allowing or not allowing the light 13 from the backlight 12 and the reflected light 15 from the object 14 to pass through the liquid crystal layer 53, by a combination with a polarizing film which is not illustrated. The liquid crystal layer 53 can include TN (twisted nematic) liquid crystals, VA (vertical alignment) liquid crystals, OCB (optically compensated birefringence) liquid crystals, IPS (in-plane switching) liquid crystals, or the like.

(11) The Spacer 57

The spacer 57 maintains a uniform thickness of the liquid crystal layer 53. The spacer 57 is formed using an organic resin, glass bead, or the like.

(12) The First Scan Line 114, the Second Scan Line 115, and the First to Sixth Signal Lines

The first scan line 114 is connected to the gates of the transistors 113, 119, and 120, inputs a signal from a driver circuit to the gates, and controls whether the transistors 113, 119, and 120 are turned on or off. The first to third signal lines are connected to the sources or drains of the transistors 113, 119, and 120, respectively, and transmit a signal detected by the second photodiode 5, the first photodiode 4, and the photodiode 123 to an external circuit. The second scan line 115 is connected to the gates of the transistors 32, 121, and 122, inputs a signal from a driver circuit to the gates, and controls whether the transistors 32, 121, and 122 are turned on or off. The fourth to sixth signal lines are connected to the sources or drains of the transistors 32, 121, and 122, respectively, and input a data signal from another driver circuit to the sources or drains of the transistors 32, 121, and 122. The first scan line

114, the second scan line 115, and the first to sixth signal lines are formed using a known material.

A method of fabricating the liquid crystal display device will be described below. The liquid crystal display device can be made basically by the method described in Embodiment 1.

The first light-blocking layer 2, the second light-blocking layer 3, and the light-blocking layer 31 are formed over the first light-transmitting substrate 1 by the method in Embodiment 1. The first light-transmitting insulating film 10 is formed over the first light-transmitting substrate 1, the first light-blocking layer 2, the second light-blocking layer 3, and the light-blocking layer 31. The first light-transmitting insulating film 10 can be made by the method in Embodiment 1.

The first photodiode 4, the second photodiode 5, and the transistor 32 are formed over the first light-transmitting insulating film 10. The first photodiode 4 and the second photodiode 5 are formed by the method in Embodiment 1. If the first photodiode 4 and the second photodiode 5 are lateral diodes, they can be made by the same steps as those of making the transistor 32. This will be described below.

A semiconductor film is formed over the first light-transmitting insulating film by CVD, sputtering, or the like. After that, the crystallinity of the semiconductor film can be improved by heat treatment, laser irradiation, or the like.

Note that the semiconductor film can be also formed by bonding and separating. First, hydrogen ions (H^+ , H_2^+ , H_3^+ , or the like) or a set of hydrogen ions and helium ions are added into a semiconductor wafer such as a silicon wafer, forming a brittle layer in the semiconductor wafer. The semiconductor wafer is bonded to the top surface of the first light-transmitting insulating film 10 and is separated along the brittle layer by heat treatment, so that a semiconductor film over the first light-transmitting insulating film is formed. The depth from the surface of the semiconductor wafer to the brittle layer corresponds to the thickness of the semiconductor film; therefore, the thickness of the semiconductor film can be adjusted by controlling the conditions of the addition of hydrogen ions or the like. Further, when the semiconductor wafer is single crystalline, a single crystal semiconductor film can be formed.

The semiconductor layer 103, the semiconductor layer 104, and the semiconductor layer 105 are formed by processing the semiconductor film by photolithography and etching.

The light-transmitting insulating film (gate insulating film) 42 is formed over the semiconductor layer 103, the semiconductor layer 104, and the semiconductor layer 105 in the manner described above.

A metal film is formed over the light-transmitting insulating film 42. The metal film is processed by photolithography and etching, so that the gate electrode 43 is formed over the semiconductor layer 105 with the gate insulating film interposed therebetween.

P-type or n-type impurity ions are selectively added to the semiconductor layer 103, the semiconductor layer 104, and the semiconductor layer 105, so that the p-type layer 33, the n-type layer 35, the p-type layer 36, the n-type layer 38, the source region 39, and the drain region 41 are formed.

Next, the light-transmitting insulating film 44 is formed over the light-transmitting insulating film 42 and the gate electrode 43. After contact holes are formed in the light-transmitting insulating film 42 and the light-transmitting insulating film 44, the electrode 45, the electrode 46, the electrode 47, the electrode 48, the source electrode 106, and the drain electrode 107 are formed. Thus, the first photodiode 4, the second photodiode 5, and the transistor 32 are formed.

Next, the flat light-transmitting insulating film 49 is formed over the light-transmitting insulating film 44, the electrode

45, the electrode 46, the electrode 47, the electrode 48, the source electrode 106, and the drain electrode 107. A contact hole is formed in the light-transmitting insulating film 49. The contact hole reaches the drain electrode 107 and is used for forming the pixel electrode. Further, a groove which reaches the first light-transmitting insulating film 10 and is used for forming the third light-blocking layer 8 is formed in the light-transmitting insulating films 49, 44, and 42.

The pixel electrode 51 to be connected to the drain electrode 107 is formed over the light-transmitting insulating film 49.

The first color filter 6 is formed in the pixel 118 by the method in Embodiment 1. The first color filter 6 is also formed in the groove described above. Next, the second color filter 7 is formed in the pixel 112. The second color filter 7 is also formed in the groove described above. The third light-blocking layer 8 is formed so as to fill the groove. Similarly, the third color filter 9 is formed in the pixel 117. The third light-blocking layer 8' formed using the second color filter 7 and the third color filter 9, and the third light-blocking layer 8' formed using the first color filter 6 and the third color filter 9 are formed in respective grooves.

Next, the alignment film 52 is formed over the first color filter 6, the second color filter 7, and the third color filter 9, and then subjected to rubbing. The alignment film 52 is not necessarily formed if there is another way to align the liquid crystal molecules in one direction.

The spacer 57 is formed over the alignment film 52. An organic resin is applied over a top surface of the alignment film 52 and then processed by photolithography and etching to form the spacer 57. Instead of the spacer 57, spherical spacers may be dispersed.

The liquid crystal layer 53 is formed by dropping liquid crystal onto the alignment film 52. Alternatively, after the first light-transmitting substrate 1 and the second light-transmitting substrate 56 are bonded to each other, injection of liquid crystal can be performed by a vacuum injection method.

The counter electrode 55 and the alignment film 54 are formed on the second light-transmitting substrate 56. After that, the first light-transmitting substrate 1 and the second light-transmitting substrate 56 are bonded to each other such that the alignment film 54 and the liquid crystal layer 53 are in contact with each other. In such a manner, the liquid crystal display device can be fabricated. (Embodiment 3)

A light-emitting device which is one embodiment of the present invention will be described below (FIG. 10). FIG. 10 is a cross-sectional view of the light-emitting device. The liquid crystal display device in Embodiment 2 and the light-emitting device in Embodiment 3 are different in that the liquid crystal display device in Embodiment 2 includes the liquid crystal layer, the first light-blocking layer 2, the second light-blocking layer 3, and the light-blocking layer 31, while the light-emitting device in Embodiment 3 includes an electroluminescent (EL) layer and hence does not need to include the first light-blocking layer 2, the second light-blocking layer 3, and the light-blocking layer 31. The display device in the Embodiment 2 and the light-emitting device in Embodiment 3 are also different in the method of detecting light: the display device in the Embodiment 2 uses the backlight, while the light-emitting device in Embodiment 3 uses an EL layer instead of a backlight.

The light-emitting device which is one embodiment of the present invention includes the first photodiode 4, the second photodiode 5, and a light-emitting layer 62 over the substrate; and includes the first color filter 6, the second color filter 7, or the third color filter 9 over the light-emitting layer 62. The

first color filter 6 covers the first photodiode 4, and the second color filter 7 covers the second photodiode 5. The light-emitting device includes the light-blocking layer 8 formed using the first color filter 6 and the second color filter 7, between the first photodiode 4 and the second photodiode 5.

The light-emitting device in FIG. 10 includes a photodetection portion 201 and a display portion 202. The photodetection portion 201 has the same structure as that in Embodiments 1 and 2.

The display portion 202 includes, over the light-transmitting substrate (the first light-transmitting substrate) 1, the transistor 32; the pixel electrode 51 connected to the transistor 32; a partition 61 formed using an insulating film covering an end of the pixel electrode 51; the light-emitting layer 62 over the pixel electrode 51; a light-transmitting electrode 63 over the light-emitting layer 62; and the first color filter 6, the second color filter 7, or the third color filter 9 over the light-transmitting electrode 63.

The transistor 32 is the same as that in Embodiment 2. The transistor 32 supplies a current to the light-emitting layer 62, and controls the amount of current to be supplied. The display portion 202 is provided with an additional transistor which is not illustrated. One of the source and drain of the additional transistor is connected to the gate electrode 43 of the transistor 32; thus, the additional transistor serves as a switch which controls whether the transistor 32 is turned on or off. In addition, a storage capacitor for maintaining the potential of the gate electrode 43 of the transistor 32 can be formed.

The partition 61 is used for partitioning the pixel portion. The partition 61 is provided between adjacent pixels. The partition 61 is formed using an inorganic or organic insulating film.

The light-emitting layer 62 is sandwiched between the pixel electrode 51 and the light-transmitting electrode 63. The light-emitting layer 62 emits light when supplied with current. Preferably, the light-emitting layer 62 emits white light. The light-emitting layer 62 can be formed using an organic or inorganic known material. In addition, the pixel electrode 51 is not necessarily capable of transmitting light. Preferably, the pixel electrode 51 reflects light emitted from the light-emitting layer 62.

The first color filter 6, the second color filter 7, and the third color filter 9 are the same as those in Embodiments 1 and 2.

A method of displaying and a method of detecting light will be described below (FIG. 11 and FIG. 12). These are basically the same methods as those in Embodiments 1 and 2.

White light 13 emitted from the light-emitting layer 62 passes through the light-transmitting electrode 63 and one of the first color filter 6, the second color filter 7 and the third color filter 9, and then reflected off the object 14 (FIG. 11). Note that FIG. 11 shows the second color filter 7. At the time, the transistor 32 is turned on, and current is supplied to the light-emitting layer 62. The light 15 reflected off the object 14 is detected by the second photodiode 5 in the photodetection portion 201. Detected light is converted into an electrical signal by the second photodiode 5 and is extracted via the extracting electrodes 47 and 48. Further, the light 15 that passes through the first color filter 6 in the display portion 202 and is reflected off the object 14 is detected by the first photodiode 4 in the photodetection portion 201. Detected light is converted into an electrical signal by the first photodiode 4 and is extracted via the extracting electrodes 45 and 46.

The white light 13 can be colored by the first color filter 6, the second color filter 7, and the third color filter 9, which allows the light-emitting device to display color image and to be used as a color sensor.

The oblique light 17 which is part of the reflected light from the object 14 is blocked by the third light-blocking layer 8. Thus, the oblique light 17 does not enter the second photodiode 5, and hence is not detected. Further, the oblique light 18 is blocked by the third light-blocking layer 8. Thus, the oblique light 18 does not enter the first photodiode 4, and hence is not detected. The third light-blocking layer 8 can reliably block the oblique light 17 and the oblique light 18 (FIG. 12).

Note that in this embodiment, since a backlight is not used, the first light-blocking layer 2, the second light-blocking layer 3, and the light-blocking layer 31 are not necessarily formed. However, in the case where the multiple reflection of light from the light-emitting layer 62 occurs in the first light-transmitting substrate 1 and thus the light enters the first photodiode 4, the second photodiode 5, and the transistor 32, the first light-blocking layer 2, the second light-blocking layer 3, and the light-blocking layer 31 are preferably formed.

In addition, as the first light-blocking layer 2 and the second light-blocking layer 3, the first reflecting layer 2 and the second reflecting layer 3 can be formed. In this case, even when the light 15 from the object 14 has not been detected by the first photodiode 4 or the second photodiode 5, the light is reflected off the first reflecting layer 2 or the second reflecting layer 3, which allows the light from the object 14 to be detected more easily by the first photodiode 4 or the second photodiode 5.

A method of fabricating the light-emitting device will be described below. The method of fabricating the light-emitting device is the same as that in Embodiment 2 except for the steps performed after the step of forming the pixel electrode 51.

An organic resin film or an inorganic insulating film is formed over the pixel electrode 51 and processed by photolithography and etching, so that the partition 61 is formed.

The light-emitting layer 62 is formed over the pixel electrode 51 by vapor deposition, droplet discharge method, or the like.

The light-transmitting electrode 63 is formed over the light-emitting layer 62 by sputtering, vapor deposition, or the like.

The first color filter 6 is formed by the method in Embodiments 1 and 2. The first color filter 6 is also formed in the groove in the insulating films 42, 44, and 49. Next, the second color filter 7 is formed. The second color filter 7 is also formed in the groove described above. The third light-blocking layer 8 formed using the first color filter 6 and the second color filter 7 is formed so as to fill the groove. Similarly, the third color filter 9 is formed. The third light-blocking layer 8' formed using the second color filter 7 and the third color filter 9, and the third light-blocking layer 8'' formed using the first color filter 6 and the third color filter 9 are formed in respective grooves.

The light-emitting device can be fabricated in such a manner. The light-emitting layer 62 can be degraded by moisture; therefore, a sealing member can be additionally provided over the first color filter 6, the second color filter 7, and the third color filter 9. (Embodiment 4)

In this embodiment, example applications of the photodetector, the liquid crystal display device, and the light-emitting device to electronic appliances will be described (FIGS. 13A to 13F).

A mobile phone in FIG. 13A includes a display portion 9101. A personal digital assistant in FIG. 13B includes a display portion 9201, an input pen 9202, and the like. A digital video camera in FIG. 13C includes a display portion 9301, a

display portion 9302, and the like. A portable game console in FIG. 13D includes a display portion 9401 and the like. A personal digital assistant in FIG. 13E includes a display portion 9501 and the like. A television in FIG. 13F includes a display portion 9601, an input pen 9602, and the like. The photodetector, the liquid crystal display device, and the light-emitting device, each of which is one embodiment of the present invention can be used as touch panels used in the display portions. By using those as touch panels, touch panels capable of data sensing with high sensitivity can be provided.

(Embodiment 5)

An example of a writing board (blackboard, whiteboard, or the like) using a liquid crystal display device or light-emitting device that includes a photodiode will be described.

For example, the liquid crystal display device including a photodiode in the above embodiment or light-emitting device including a photodiode in the above embodiment is provided at the position of a panel 9696 in FIG. 14.

Here, it is possible to freely write down letters or the like on the surface of the panel 9696, with a marker pen or the like.

Note that it is easy to erase letters if the letters are written with a marker pen or the like without fixer.

In addition, preferably, the surface of the panel 9696 is adequately smooth in order that the ink of marker pen may easily be removed.

For example, the surface of the panel 9696 is adequately smooth if made using a glass substrate or the like.

Further, a transparent sheet of synthetic resin or the like can be laminated to the surface of the panel 9696.

Preferably, acrylic resin, for example, is used as the synthetic resin. In this case, the surface of the sheet of synthetic resin is preferably smooth.

In addition, since the panel 9696 includes a display element, the panel 9696 can display a particular image and at the same time, it is possible to write down letters or the like on the surface of the panel 9696 with a marker pen.

Further, since the panel 9696 includes a photodiode, the panel 9696 can read out and print out letters written with a marker pen if connected to a printer or the like.

Further, since the panel 9696 includes the liquid crystal display device including a photodiode or light-emitting device including a photodiode, by writing down letters or the like or drawing a graphic and the like on the surface of the panel 9696 while the panel 9696 displays an image, the panel 9696 can display a trail of a marker, which has been read out by the photodiode, superimposed on the image.

Note that sensing with resistive touch sensors, capacitive touch sensors, or the like can be performed only at the same time as writing with a marker pen or the like.

Meanwhile, sensing with a photodiode is superior in that it can be performed anytime even long after writing has been done with a marker pen or the like.

Note that this embodiment can be freely combined with any of the other embodiments.

This application is based on Japanese Patent Application serial no. 2009-191827 filed with Japan Patent Office on Aug. 21, 2009, the entire contents of which are hereby incorporated by reference.

What is claimed is:

1. A photodetector comprising:

- a first light-blocking layer over a light-transmitting substrate;
- a second light-blocking layer over the light-transmitting substrate;

a first photodiode over the first light-blocking layer and in contact with a surface;

a second photodiode over the second light-blocking layer and in contact with the surface;

a first color filter in contact with the surface, the first color filter covering the first photodiode;

a second color filter in contact with the surface, the second color filter covering the second photodiode; and

a third light-blocking layer comprising a part of the first color filter and a part of the second color filter, the third light-blocking layer being located between the first photodiode and the second photodiode.

2. The photodetector according to claim 1, wherein the first light-blocking layer is a first reflecting layer, and wherein the second light-blocking layer is a second reflecting layer.

3. A photodetector comprising:

a first light-blocking layer over a light-transmitting substrate;

a second light-blocking layer over the light-transmitting substrate;

a light-transmitting insulating film over and in contact with the light-transmitting substrate, the first light-blocking layer, and the second light-blocking layer;

a first photodiode over the first light-blocking layer with the light-transmitting insulating film interposed therebetween;

a second photodiode over the second light-blocking layer with the light-transmitting insulating film interposed therebetween;

a first color filter covering the first photodiode;

a second color filter covering the second photodiode; and

a third light-blocking layer comprising a part of the first color filter and a part of the second color filter which are arranged side by side, the third light-blocking layer being located between the first photodiode and the second photodiode, wherein the third light-blocking layer is over and in contact with the light-transmitting insulating film.

4. The photodetector according to claim 3, wherein the first light-blocking layer is a first reflecting layer, and wherein the second light-blocking layer is a second reflecting layer.

5. A liquid crystal display device comprising:

a first light-blocking layer over a first light-transmitting substrate;

a second light-blocking layer over the first light-transmitting substrate;

a first photodiode over the first light-blocking layer and in contact with a surface;

a second photodiode over the second light-blocking layer and in contact with the surface;

a first color filter in contact with the surface, the first color filter covering the first photodiode;

a second color filter in contact with the surface, the second color filter covering the second photodiode;

a third light-blocking layer comprising a part of the first color filter and a part of the second color filter, the third light-blocking layer being located between the first photodiode and the second photodiode;

a liquid crystal layer over the first color filter and the second color filter; and

a second light-transmitting substrate over the liquid crystal layer.

6. The liquid crystal display device according to claim 5, wherein the first light-blocking layer is a first reflecting layer, and wherein the second light-blocking layer is a second reflecting layer.

7. The liquid crystal display device according to claim 5, wherein a thickness of the second light-transmitting substrate is 70 μm to 100 μm .

8. A liquid crystal display device comprising:

a first light-blocking layer over a first light-transmitting substrate;

a second light-blocking layer over the first light-transmitting substrate;

a light-transmitting insulating film over and in contact with the first light-transmitting substrate, the first light-blocking layer, and the second light-blocking layer;

a first photodiode over the first light-blocking layer with the light-transmitting insulating film interposed therebetween;

a second photodiode over the second light-blocking layer with the light-transmitting insulating film interposed therebetween;

a first color filter covering the first photodiode;

a second color filter covering the second photodiode;

a liquid crystal layer over the first color filter and the second color filter; and

a second light-transmitting substrate over the liquid crystal layer,

a third light-blocking layer comprising a part of the first color filter and a part of the second color filter which are arranged side by side, the third light-blocking layer being located between the first photodiode and the second photodiode, and wherein the third light-blocking layer is over and in contact with the light-transmitting insulating film.

9. The liquid crystal display device according to claim 8, wherein the first light-blocking layer is a first reflecting layer, and wherein the second light-blocking layer is a second reflecting layer.

10. The liquid crystal display device according to claim 8, wherein a thickness of the second light-transmitting substrate is 70 μm to 100 μm .

11. A light-emitting device comprising:

a first photodiode over a substrate;

a second photodiode over the substrate;

a light-emitting layer over the substrate;

a first color filter over the light-emitting layer, the first color filter covering the first photodiode;

a second color filter over the light-emitting layer, the second color filter covering the second photodiode; and

a light-blocking layer comprising a part of the first color filter and a part of the second color filter, the light-blocking layer being located between the first photodiode and the second photodiode.

12. The light-emitting device according to claim 11, further comprising:

a first light-blocking layer and a second light-blocking layer over the substrate,

wherein the first photodiode is over the first light-blocking layer, and wherein the second photodiode is over the second light-blocking layer.

13. The light-emitting device according to claim 12, wherein the first light-blocking layer is a first reflecting layer, and wherein the second light-blocking layer is a second reflecting layer.

21

14. The light-emitting device according to claim 11, further comprising a light-transmitting electrode between the light-emitting layer and the first color filter.

15. A light-emitting device comprising:
 an insulating film over a substrate;
 a first photodiode over the substrate;
 a second photodiode over the substrate;
 a light-emitting layer over the substrate;
 a first color filter over the light-emitting layer, the first color filter covering the first photodiode;
 a second color filter over the light-emitting layer, the second color filter covering the second photodiode; and
 a light-blocking layer comprising a part of the first color filter and a part of the second color filter which are arranged side by side, the light-blocking layer being located between the first photodiode and the second photodiode,
 wherein the light-blocking layer is over and in contact with the insulating film.

16. The light-emitting device according to claim 15, further comprising:
 a first light-blocking layer over the substrate, and
 a second light-blocking layer over the substrate;
 wherein the first photodiode is over the first light-blocking layer with the insulating film interposed therebetween, and

22

wherein the second photodiode is over the second light-blocking layer with the insulating film interposed therebetween.

17. The light-emitting device according to claim 16, wherein the first light-blocking layer is a first reflecting layer, and wherein the second light-blocking layer is a second reflecting layer.

18. A semiconductor device comprising:
 a first photodiode over a substrate;
 a second photodiode over the substrate;
 an insulating film over the first photodiode and the second photodiode, the insulating film having a groove;
 a first color filter over the insulating film;
 a second color filter over the insulating film; and
 a light blocking layer comprising a part of the first color filter and a part of the second color filter,
 wherein the part of the first color filter and the part of the second color filter are in contact with each other in the groove of the insulating film.

19. The semiconductor device according to claim 18, wherein the semiconductor device is one of a photodetector, a liquid crystal display device, and a light-emitting device.

20. The semiconductor device according to claim 18, wherein the groove is located between the first photodiode and the second photodiode.

* * * * *

专利名称(译)	光电探测器，液晶显示装置和发光装置		
公开(公告)号	US8773622	公开(公告)日	2014-07-08
申请号	US12/855336	申请日	2010-08-12
[标]申请(专利权)人(译)	株式会社半导体能源研究所		
申请(专利权)人(译)	半导体能源研究所有限公司.		
当前申请(专利权)人(译)	半导体能源研究所有限公司.		
[标]发明人	KUROKAWA YOSHIYUKI IKEDA TAKAYUKI		
发明人	KUROKAWA, YOSHIYUKI IKEDA, TAKAYUKI		
IPC分类号	G02F1/1333		
CPC分类号	H01L27/14618 G02F2001/13312 H01L27/1446 G02F1/133514 H01L31/02327 H01L31/02164 H01L27/14621 H01L2924/0002 H01L27/3269		
代理机构(译)	FISH & RICHARDSON P.C.		
优先权	2009191827 2009-08-21 JP		
其他公开文献	US20110042766A1		
外部链接	Espacenet USPTO		

摘要(译)

本发明的一个实施例包括在透光衬底上的第一光阻挡层和第二光阻挡层，在第一光阻挡层上的第一光电二极管，在第二光阻挡层上的第二光电二极管覆盖第一光电二极管的第一滤色器，覆盖第二光电二极管的第二滤色器，以及使用第一滤色器和第二滤色器形成的第三光阻挡层，并设置在第一光电二极管和第二光电二极管之间。

